

Data File : VU032945.D  
 Acq On : 21 Jun 2019 15:15  
 Operator : JC/SP  
 Sample : K3463-04  
 Misc : 5.0mL/MSVOA\_U/WATER  
 ALS Vial : 12 Sample Multiplier: 1

Instrument :  
 MSVOA\_U  
 ClientSampleId :  
 T11-MW-1-8.0-062019

Quant Time: Jun 22 00:37:47 2019  
 Quant Method : Z:\VOASRV\HPCHEM1\MSVOA\_U\METHOD\SOMULM061719WMA.M  
 Quant Title : VOC Analysis  
 QLast Update : Sat Jun 22 00:32:21 2019  
 Response via : Initial Calibration

Internal Standards	R.T.	QIon	Response	Conc	Units	Dev(Min)
1) 1,4-Difluorobenzene	5.88	114	201546	50.00	ug/L	0.00
28) Chlorobenzene-d5	9.08	117	196348	50.00	ug/L	0.00
60) 1,4-Dichlorobenzene-d4	11.48	152	92367	50.00	ug/L	0.00

System Monitoring Compounds

4) Vinyl Chloride-d3	1.39	65	49804	36.16	ug/L	0.00
Spiked Amount	50.000	Range	60 - 135	Recovery	=	72.32%
7) Chloroethane-d5	1.68	69	44329	40.35	ug/L	0.00
Spiked Amount	50.000	Range	70 - 130	Recovery	=	80.70%
11) 1,1-Dichloroethene-d2	2.26	63	78943	28.45	ug/L	0.00
Spiked Amount	50.000	Range	60 - 125	Recovery	=	56.90%#
21) 2-Butanone-d5	4.17	46	119576	104.30	ug/L	0.00
Spiked Amount	100.000	Range	40 - 130	Recovery	=	104.30%
24) Chloroform-d	4.64	84	116735	43.60	ug/L	0.00
Spiked Amount	50.000	Range	70 - 125	Recovery	=	87.20%
26) 1,2-Dichloroethane-d4	5.30	65	83717	46.94	ug/L	0.00
Spiked Amount	50.000	Range	70 - 125	Recovery	=	93.88%
32) Benzene-d6	5.33	84	218318	42.65	ug/L	0.00
Spiked Amount	50.000	Range	70 - 125	Recovery	=	85.30%
36) 1,2-Dichloropropane-d6	6.33	67	74066	45.42	ug/L	0.00
Spiked Amount	50.000	Range	70 - 120	Recovery	=	90.84%
41) Toluene-d8	7.56	98	191599	39.97	ug/L	0.00
Spiked Amount	50.000	Range	80 - 120	Recovery	=	79.94%#
43) trans-1,3-Dichloropropene-	7.84	79	35413	41.75	ug/L	0.00
Spiked Amount	50.000	Range	60 - 125	Recovery	=	83.50%
47) 2-Hexanone-d5	8.31	63	71147	93.45	ug/L	0.00
Spiked Amount	100.000	Range	45 - 130	Recovery	=	93.45%
57) 1,1,2,2-Tetrachloroethane-	10.42	84	113275	44.94	ug/L	0.00
Spiked Amount	50.000	Range	65 - 120	Recovery	=	89.88%
64) 1,2-Dichlorobenzene-d4	11.86	152	82053	45.91	ug/L	0.00
Spiked Amount	50.000	Range	80 - 120	Recovery	=	91.82%

Target Compounds

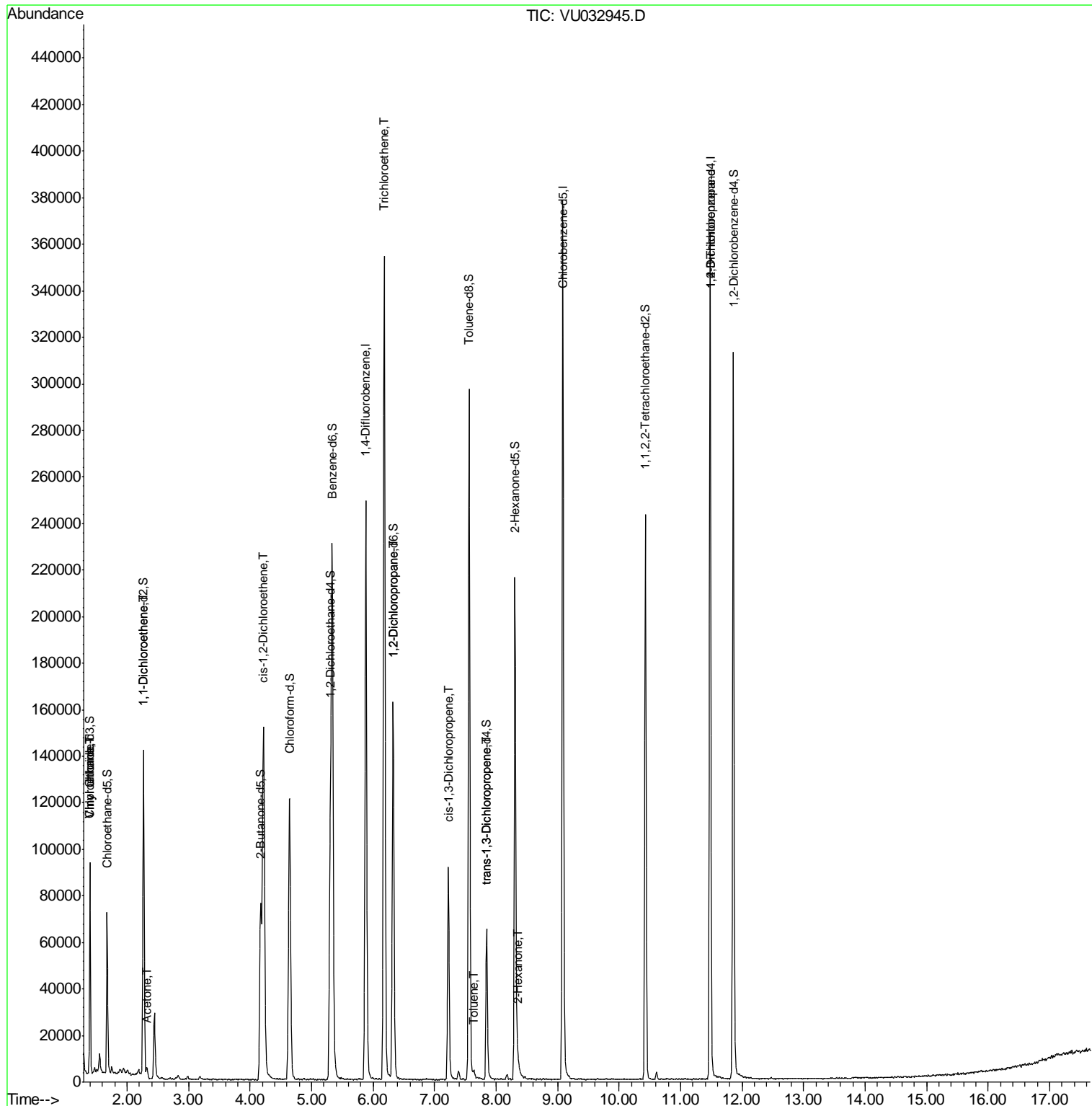
					Qvalue
5) Vinyl chloride	1.40	62	1683	0.920 ug/L #	49
8) Chloroethane	1.40	64	1184	1.124 ug/L #	1
12) 1,1-Dichloroethene	2.27	96	899	0.708 ug/L #	1
13) Acetone	2.32	43	3989	2.519 ug/L	94
20) cis-1,2-Dichloroethene	4.22	96	77124	51.437 ug/L	93
34) Trichloroethene	6.18	95	117156	77.521 ug/L	98
37) 1,2-Dichloropropane	6.33	63	8726	5.624 ug/L #	88
39) cis-1,3-Dichloropropene	7.22	75	2574	1.065 ug/L #	70
42) Toluene	7.64	91	2265	0.370 ug/L	85
44) trans-1,3-Dichloropropene	7.85	75	1636	0.721 ug/L	88
48) 2-Hexanone	8.36	43	2736	1.252 ug/L #	70
59) 1,2,3-Trichloropropane	11.48	75	12105	5.846 ug/L	89

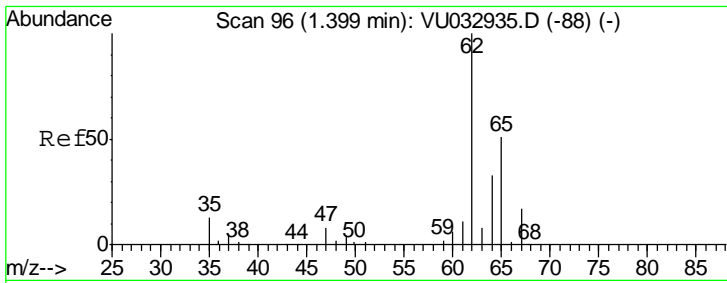
(#) = qualifier out of range (m) = manual integration (+) = signals summed

Data File : VU032945.D  
Acq On : 21 Jun 2019 15:15  
Operator : JC/SP  
Sample : K3463-04  
Misc : 5.0mL/MSVOA\_U/WATER  
ALS Vial : 12 Sample Multiplier: 1

Instrument :  
MSVOA\_U  
Client Sample ID :  
T11-MW-1-8.0-062019

Quant Time: Jun 22 00:37:47 2019  
Quant Method : Z:\VOASRV\HPCHEM1\MSVOA\_U\METHOD\SOMULM061719WMA.M  
Quant Title : VOC Analysis  
QLast Update : Sat Jun 22 00:32:21 2019  
Response via : Initial Calibration

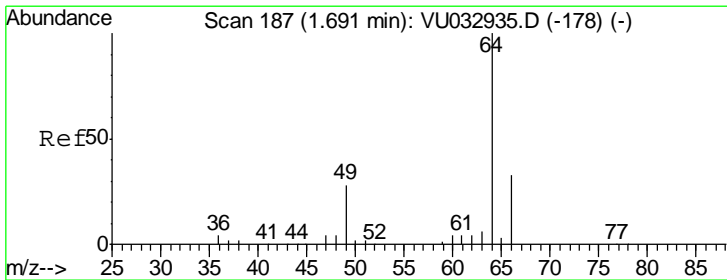
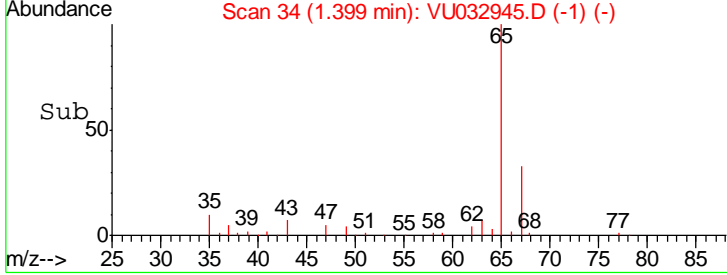
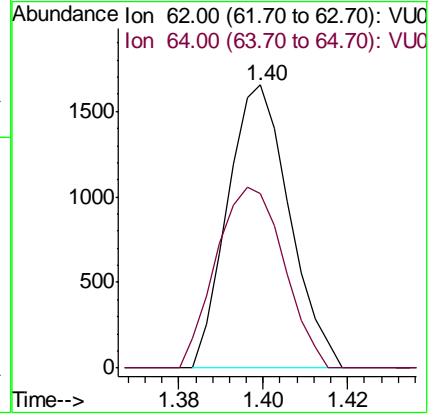
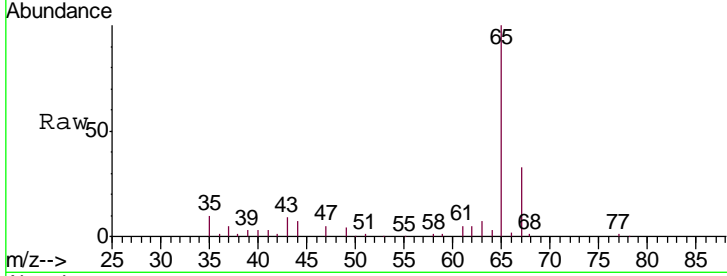




#5  
 Vinyl chloride  
 Concen: 0.920 ug/L  
 RT: 1.40 min Scan# 34  
 Delta R.T. 0.00 min  
 Lab File: VU032945.D  
 Acq: 21 Jun 2019 15:15

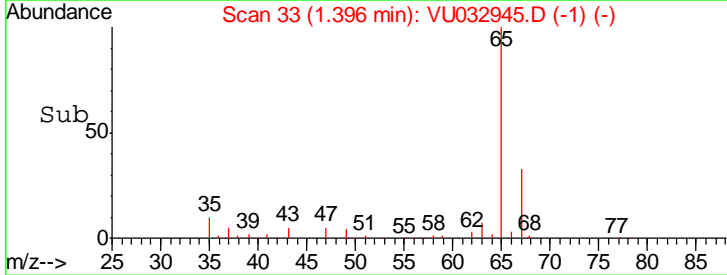
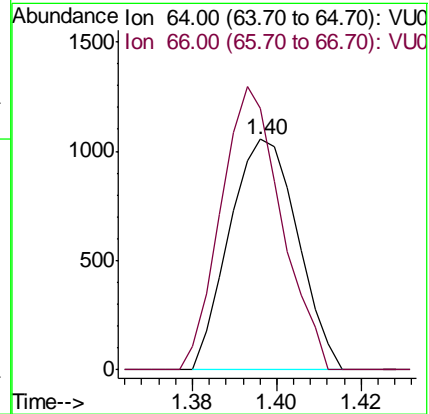
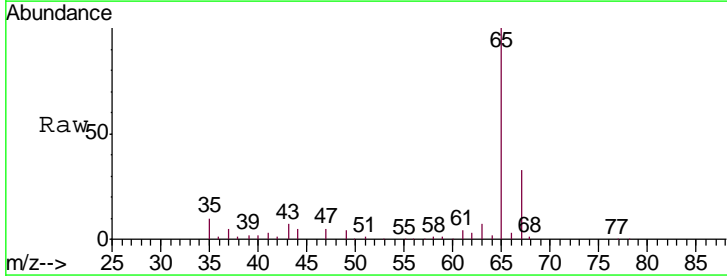
Instrument : MSVOA\_U  
 ClientSampled : T11-MW-1-8.0-062019

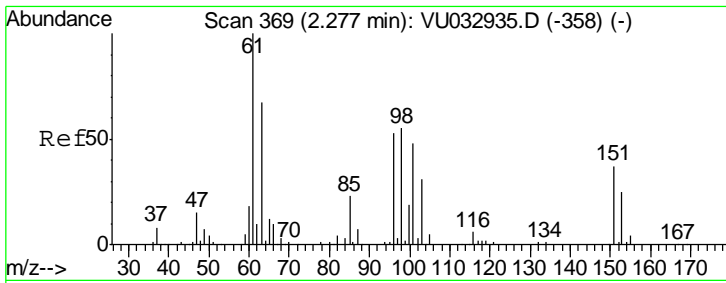
Tgt Ion: 62 Resp: 1683  
 Ion Ratio Lower Upper  
 62 100  
 64 61.6 23.0 42.6#



#8  
 Chloroethane  
 Concen: 1.124 ug/L  
 RT: 1.40 min Scan# 33  
 Delta R.T. -0.30 min  
 Lab File: VU032945.D  
 Acq: 21 Jun 2019 15:15

Tgt Ion: 64 Resp: 1184  
 Ion Ratio Lower Upper  
 64 100  
 66 113.2 22.5 41.7#

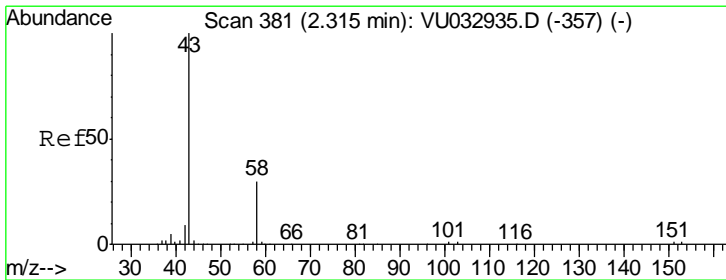
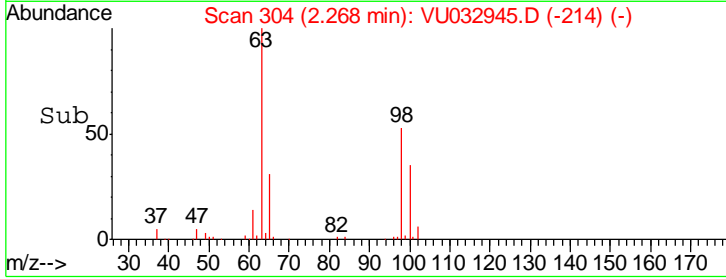
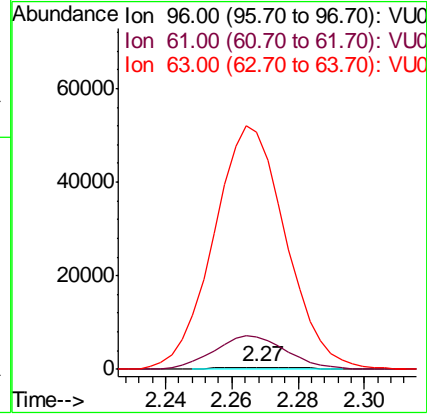
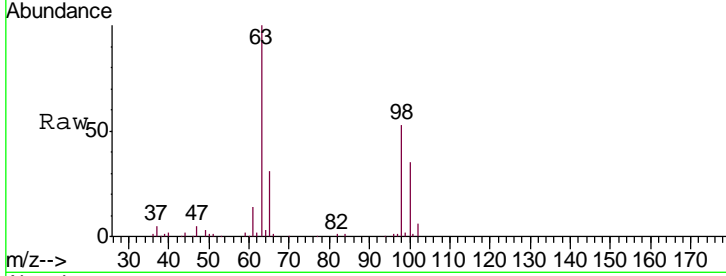




#12  
 1,1-Dichloroethene  
 Concen: 0.708 ug/L  
 RT: 2.27 min Scan# 304  
 Delta R.T. -0.01 min  
 Lab File: VU032945.D  
 Acq: 21 Jun 2019 15:15

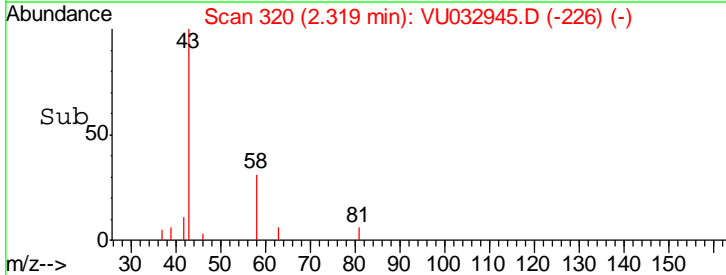
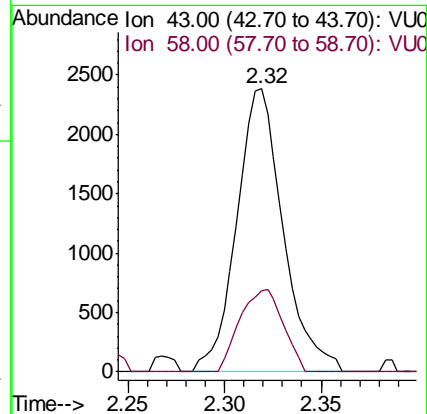
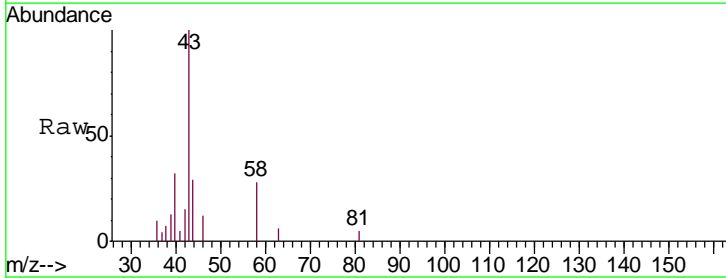
Instrument :  
 MSVOA\_U  
 ClientSampled :  
 T11-MW-1-8.0-062019

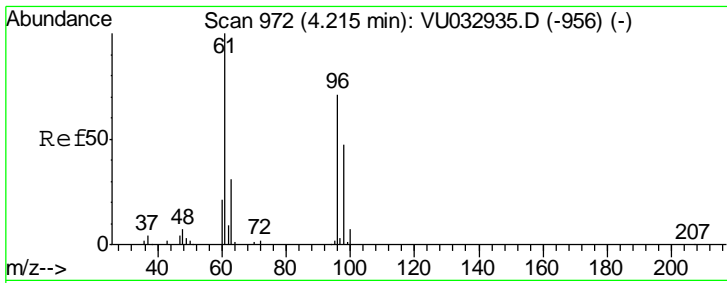
Tgt Ion: 96 Resp: 899  
 Ion Ratio Lower Upper  
 96 100  
 61 1439.8 131.0 243.4#  
 63 10434.5 101.0 187.6#



#13  
 Acetone  
 Concen: 2.519 ug/L  
 RT: 2.32 min Scan# 320  
 Delta R.T. 0.00 min  
 Lab File: VU032945.D  
 Acq: 21 Jun 2019 15:15

Tgt Ion: 43 Resp: 3989  
 Ion Ratio Lower Upper  
 43 100  
 58 27.0 0.0 60.6



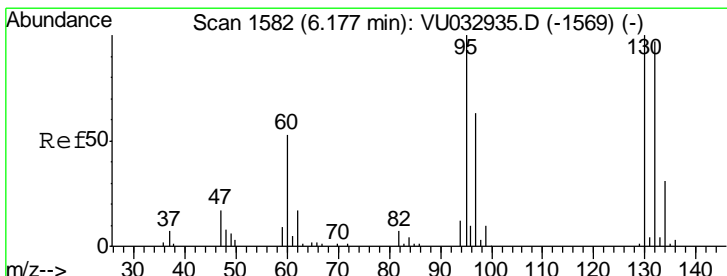
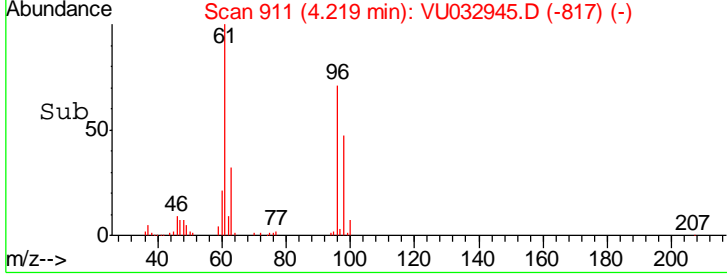
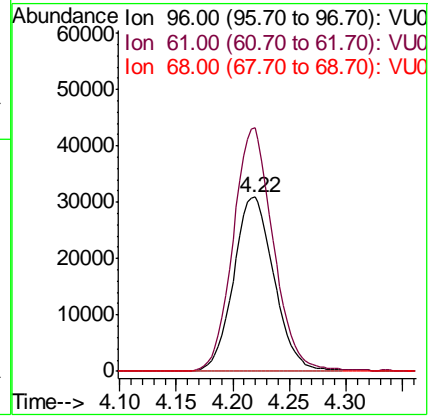
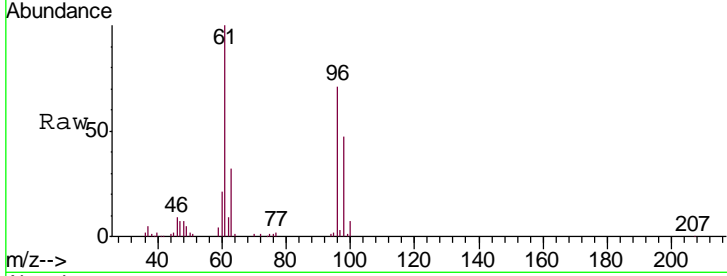


#20  
 cis-1,2-Dichloroethene  
 Concen: 51.437 ug/L  
 RT: 4.22 min Scan# 911  
 Delta R.T. 0.00 min  
 Lab File: VU032945.D  
 Acq: 21 Jun 2019 15:15

**Instrument :**  
 MSVOA\_U  
**ClientSampleId :**  
 T11-MW-1-8.0-062019

Tgt Ion: 96 Resp: 77124

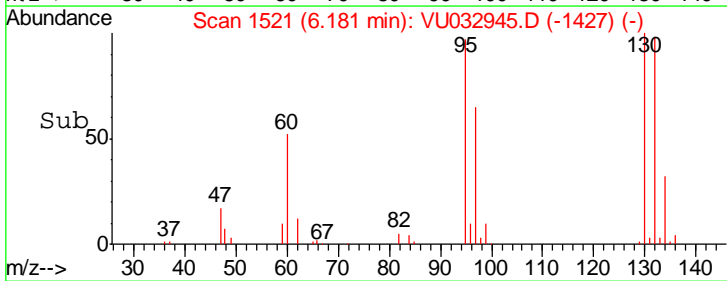
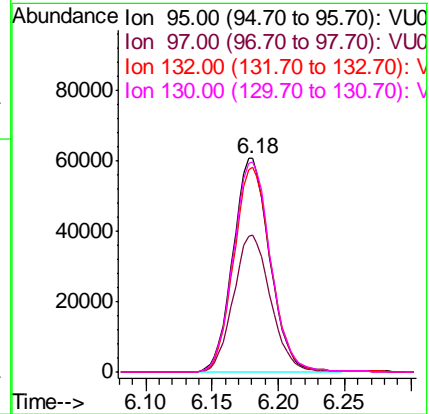
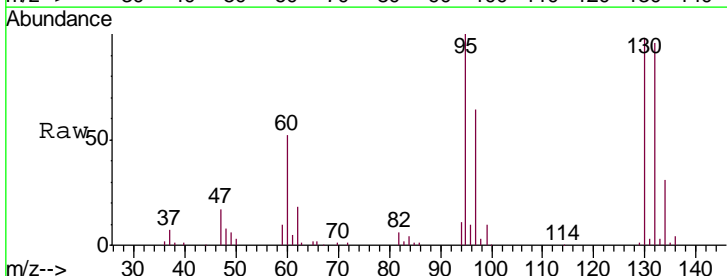
Ion	Ratio	Lower	Upper
96	100		
61	140.0	92.4	171.6
68	0.0	0.0	0.0

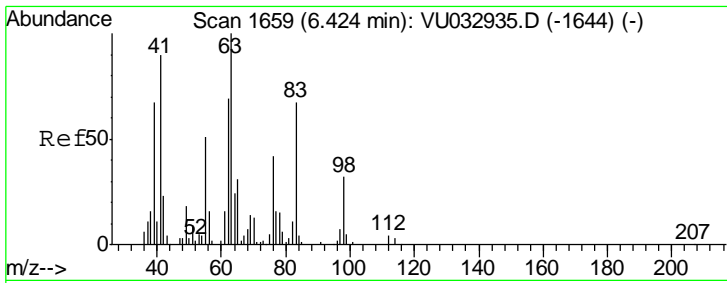


#34  
 Trichloroethene  
 Concen: 77.521 ug/L  
 RT: 6.18 min Scan# 1521  
 Delta R.T. 0.00 min  
 Lab File: VU032945.D  
 Acq: 21 Jun 2019 15:15

Tgt Ion: 95 Resp: 117156

Ion	Ratio	Lower	Upper
95	100		
97	63.9	45.9	85.3
132	96.0	68.5	127.3
130	98.4	70.8	131.4

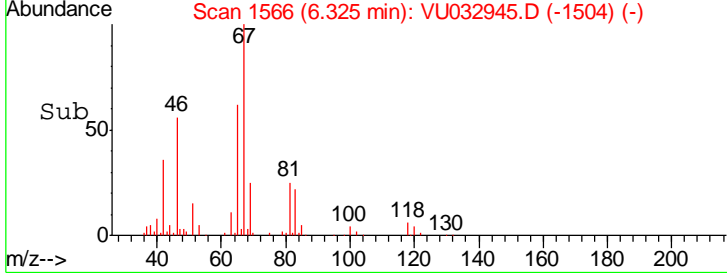
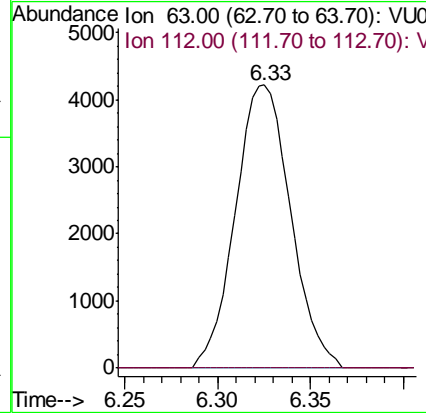
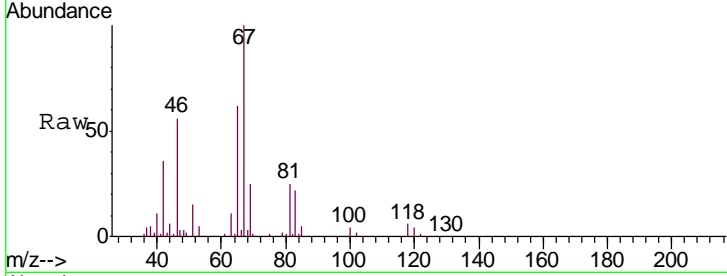




#37  
 1,2-Dichloropropane  
 Concen: 5.624 ug/L  
 RT: 6.33 min Scan# 1566  
 Delta R.T. -0.10 min  
 Lab File: VU032945.D  
 Acq: 21 Jun 2019 15:15

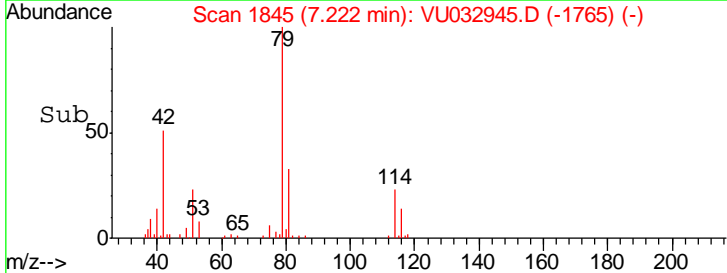
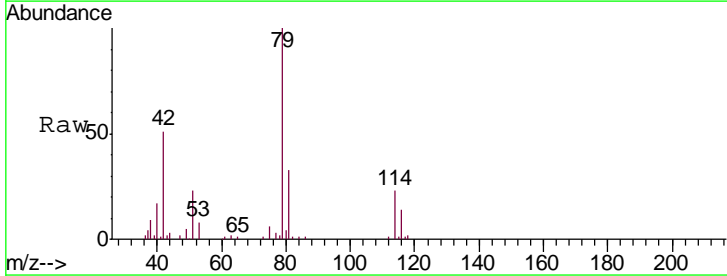
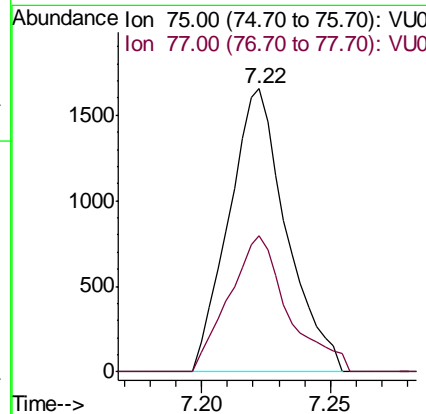
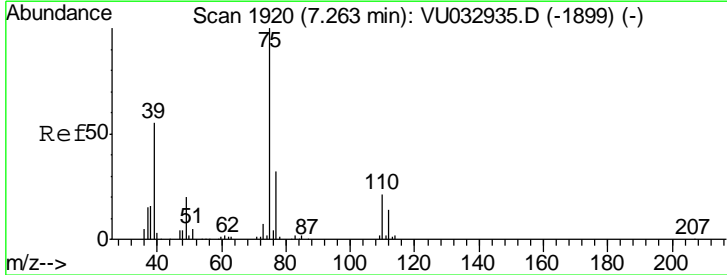
**Instrument :**  
 MSVOA\_U  
**ClientSampleId :**  
 T11-MW-1-8.0-062019

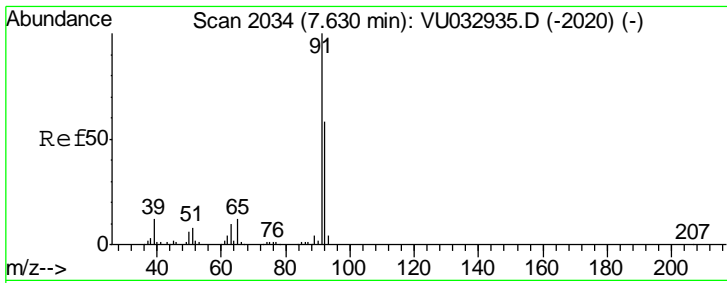
Tgt Ion: 63 Resp: 8726  
 Ion Ratio Lower Upper  
 63 100  
 112 0.0 3.0 4.6#



#39  
 cis-1,3-Dichloropropene  
 Concen: 1.065 ug/L  
 RT: 7.22 min Scan# 1845  
 Delta R.T. -0.04 min  
 Lab File: VU032945.D  
 Acq: 21 Jun 2019 15:15

Tgt Ion: 75 Resp: 2574  
 Ion Ratio Lower Upper  
 75 100  
 77 47.9 21.9 40.7#

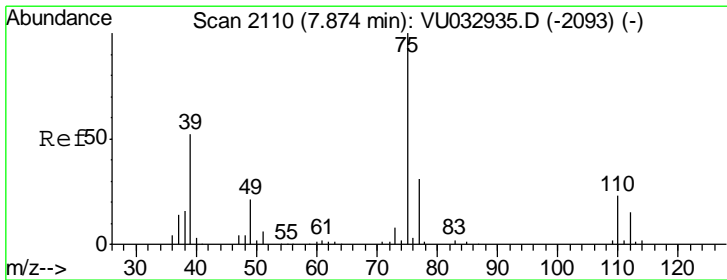
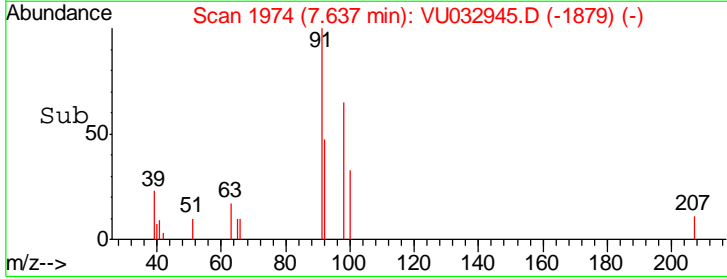
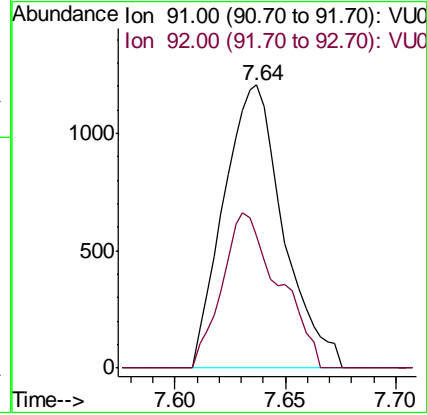
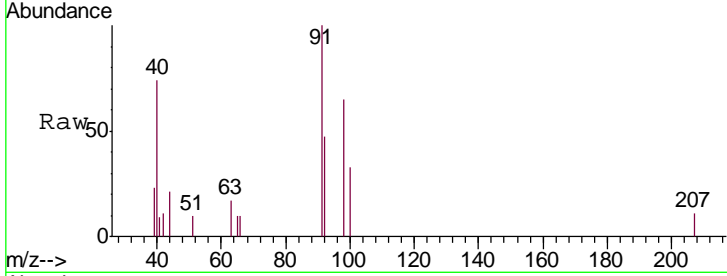




#42  
 Toluene  
 Concen: 0.370 ug/L  
 RT: 7.64 min Scan# 1974  
 Delta R.T. 0.01 min  
 Lab File: VU032945.D  
 Acq: 21 Jun 2019 15:15

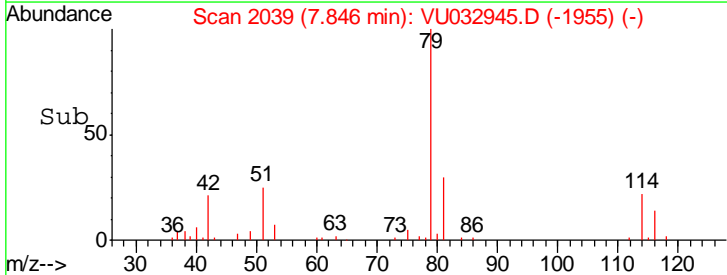
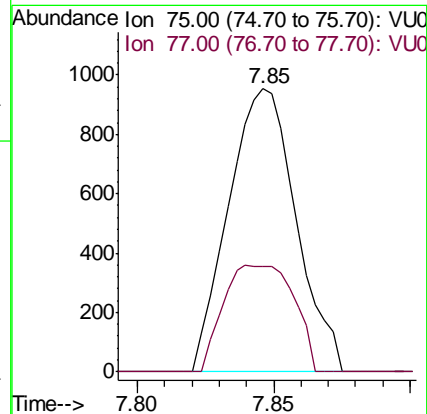
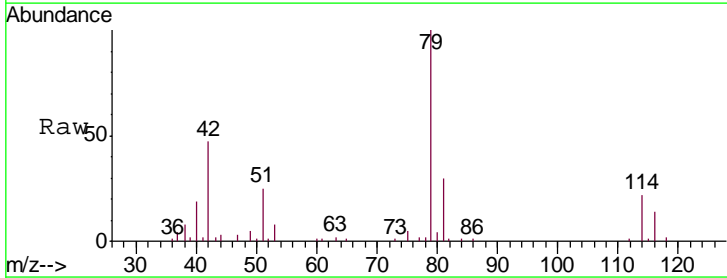
Instrument :  
 MSVOA\_U  
 ClientSampled :  
 T11-MW-1-8.0-062019

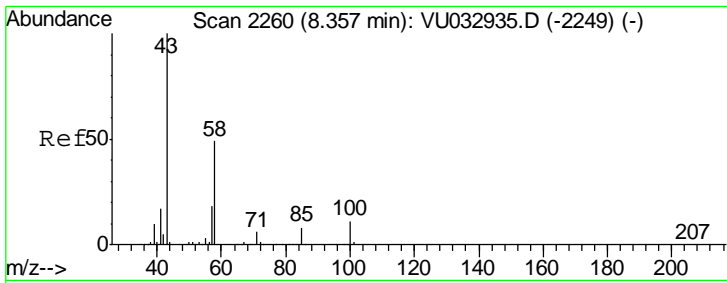
Tgt Ion: 91 Resp: 2265  
 Ion Ratio Lower Upper  
 91 100  
 92 46.8 40.4 75.0



#44  
 trans-1,3-Dichloropropene  
 Concen: 0.721 ug/L  
 RT: 7.85 min Scan# 2039  
 Delta R.T. -0.03 min  
 Lab File: VU032945.D  
 Acq: 21 Jun 2019 15:15

Tgt Ion: 75 Resp: 1636  
 Ion Ratio Lower Upper  
 75 100  
 77 37.5 21.8 40.4

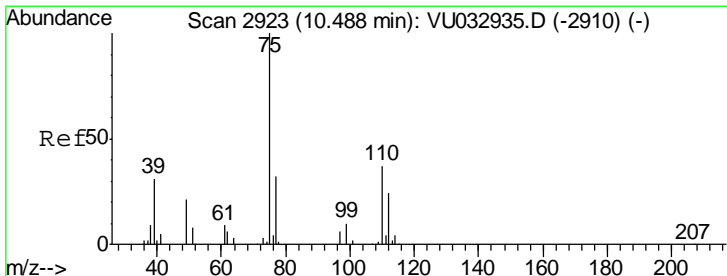
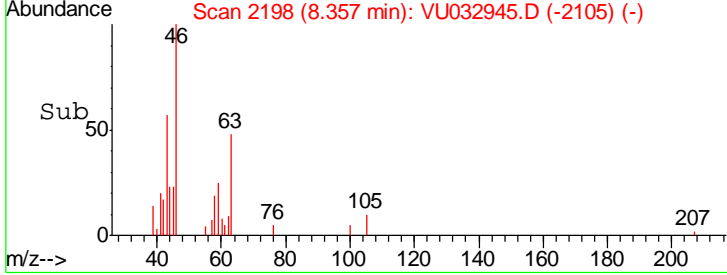
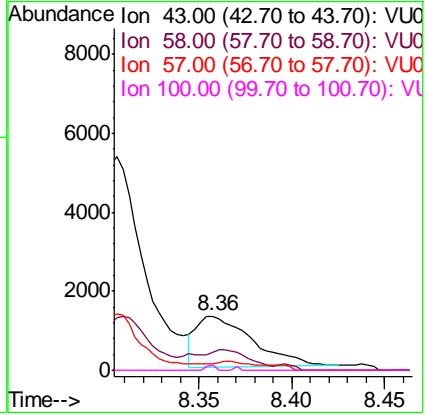
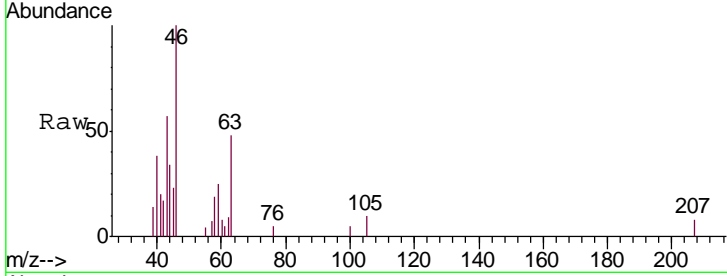




#48  
 2-Hexanone  
 Concen: 1.252 ug/L  
 RT: 8.36 min Scan# 2198  
 Delta R.T. 0.00 min  
 Lab File: VU032945.D  
 Acq: 21 Jun 2019 15:15

**Instrument :**  
 MSVOA\_U  
**ClientSampled :**  
 T11-MW-1-8.0-062019

Tgt Ion	Resp	Lower	Upper
43	100		
58	29.4	40.2	60.2#
57	3.6	14.2	21.4#
100	1.6	8.4	12.6#



#59  
 1,2,3-Trichloropropane  
 Concen: 5.846 ug/L  
 RT: 11.48 min Scan# 3168  
 Delta R.T. 0.99 min  
 Lab File: VU032945.D  
 Acq: 21 Jun 2019 15:15

Tgt Ion	Resp	Lower	Upper
75	100		
77	38.0	25.5	38.3

