

Data File : VU032969.D
 Acq On : 22 Jun 2019 00:50
 Operator : JC/SP
 Sample : K3464-08
 Misc : 5.0mL/MSVOA_U/WATER
 ALS Vial : 37 Sample Multiplier: 1

Instrument :
 MSVOA_U
 ClientSampled :
 ETF35

Quant Time: Jun 22 02:53:27 2019
 Quant Method : Z:\VOASRV\HPCHEM1\MSVOA_U\METHOD\SOMULM061719WMA.M
 Quant Title : VOC Analysis
 QLast Update : Sat Jun 22 01:56:09 2019
 Response via : Initial Calibration

Internal Standards	R.T.	QIon	Response	Conc	Units	Dev(Min)
1) 1,4-Difluorobenzene	5.88	114	194540	50.00	ug/L	0.00
28) Chlorobenzene-d5	9.08	117	193954	50.00	ug/L	0.00
60) 1,4-Dichlorobenzene-d4	11.48	152	90830	50.00	ug/L	0.00

System Monitoring Compounds

4) Vinyl Chloride-d3	1.39	65	51183	38.50	ug/L	0.00
Spiked Amount	50.000	Range	60 - 135	Recovery	=	77.00%
7) Chloroethane-d5	1.67	69	46793	44.13	ug/L	0.00
Spiked Amount	50.000	Range	70 - 130	Recovery	=	88.26%
11) 1,1-Dichloroethene-d2	2.26	63	82486	30.80	ug/L	0.00
Spiked Amount	50.000	Range	60 - 125	Recovery	=	61.60%
21) 2-Butanone-d5	4.17	46	122104	110.34	ug/L	0.00
Spiked Amount	100.000	Range	40 - 130	Recovery	=	110.34%
24) Chloroform-d	4.64	84	122111	47.25	ug/L	0.00
Spiked Amount	50.000	Range	70 - 125	Recovery	=	94.50%
26) 1,2-Dichloroethane-d4	5.30	65	86164	50.05	ug/L	0.00
Spiked Amount	50.000	Range	70 - 125	Recovery	=	100.10%
32) Benzene-d6	5.33	84	228035	45.10	ug/L	0.00
Spiked Amount	50.000	Range	70 - 125	Recovery	=	90.20%
36) 1,2-Dichloropropane-d6	6.32	67	77177	47.92	ug/L	0.00
Spiked Amount	50.000	Range	70 - 120	Recovery	=	95.84%
41) Toluene-d8	7.56	98	204576	43.21	ug/L	0.00
Spiked Amount	50.000	Range	80 - 120	Recovery	=	86.42%
43) trans-1,3-Dichloropropene-	7.84	79	34910	41.67	ug/L	0.00
Spiked Amount	50.000	Range	60 - 125	Recovery	=	83.34%
47) 2-Hexanone-d5	8.31	63	73178	97.30	ug/L	0.00
Spiked Amount	100.000	Range	45 - 130	Recovery	=	97.30%
57) 1,1,2,2-Tetrachloroethane-	10.42	84	118435	47.57	ug/L	0.00
Spiked Amount	50.000	Range	65 - 120	Recovery	=	95.14%
64) 1,2-Dichlorobenzene-d4	11.86	152	85010	48.36	ug/L	0.00
Spiked Amount	50.000	Range	80 - 120	Recovery	=	96.72%

Target Compounds

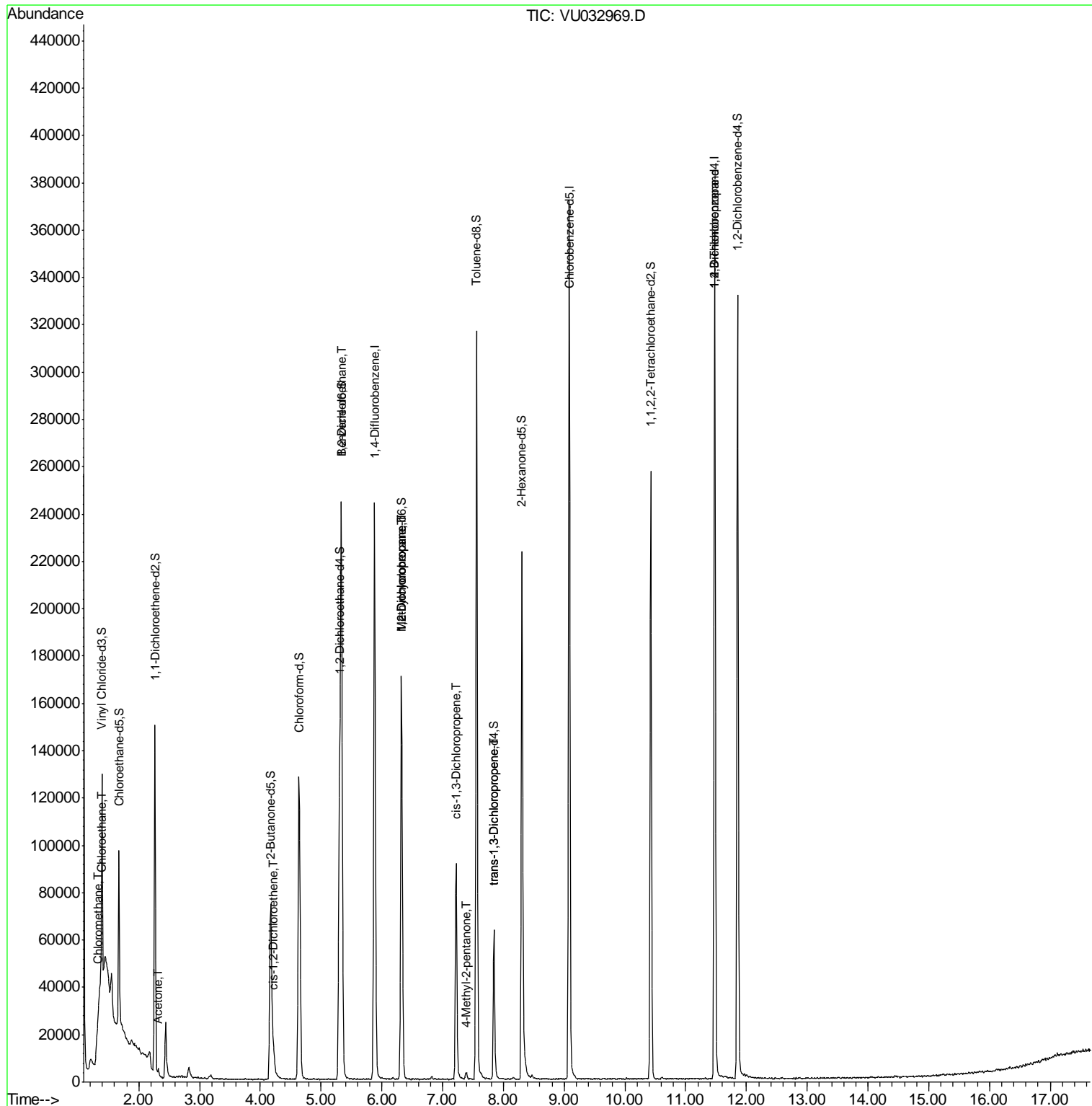
					Qvalue
3) Chloromethane	1.33	50	1207	0.678 ug/L #	42
8) Chloroethane	1.37	64	59618	58.627 ug/L #	52
13) Acetone	2.32	43	2699	1.766 ug/L	87
20) cis-1,2-Dichloroethene	4.22	96	3335	2.304 ug/L	99
27) 1,2-Dichloroethane	5.33	62	1534	0.715 ug/L #	77
35) Methylcyclohexane	6.32	83	17937	7.773 ug/L #	18
37) 1,2-Dichloropropane	6.32	63	9579	6.250 ug/L #	88
39) cis-1,3-Dichloropropene	7.23	75	2610	1.093 ug/L #	53
40) 4-Methyl-2-pentanone	7.39	43	1356	0.554 ug/L #	46
44) trans-1,3-Dichloropropene	7.85	75	1688	0.753 ug/L #	71
59) 1,2,3-Trichloropropane	11.48	75	12212	5.971 ug/L	89

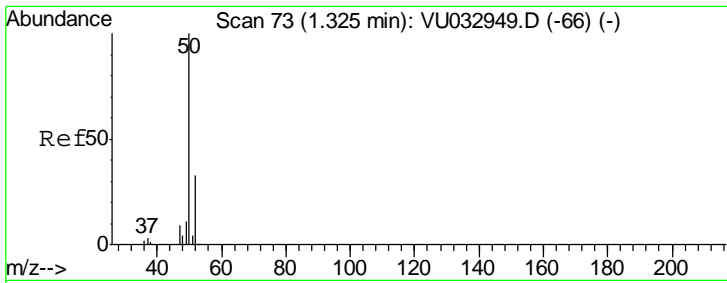
(#) = qualifier out of range (m) = manual integration (+) = signals summed

Data File : VU032969.D
Acq On : 22 Jun 2019 00:50
Operator : JC/SP
Sample : K3464-08
Misc : 5.0mL/MSVOA_U/WATER
ALS Vial : 37 Sample Multiplier: 1

Instrument :
MSVOA_U
Client Sampled :
ETF35

Quant Time: Jun 22 02:53:27 2019
Quant Method : Z:\VOASRV\HPCHEM1\MSVOA_U\METHOD\SOMULM061719WMA.M
Quant Title : VOC Analysis
QLast Update : Sat Jun 22 01:56:09 2019
Response via : Initial Calibration

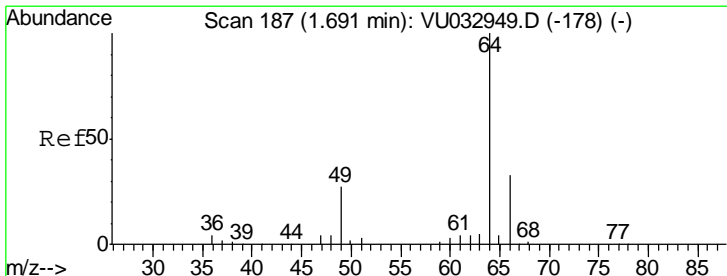
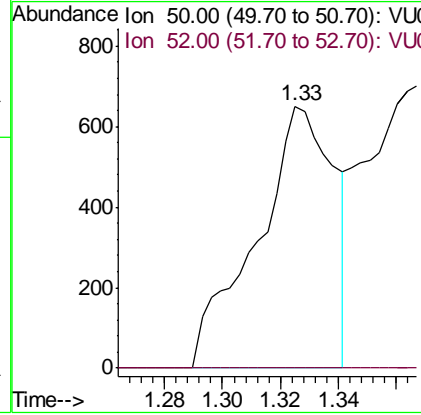
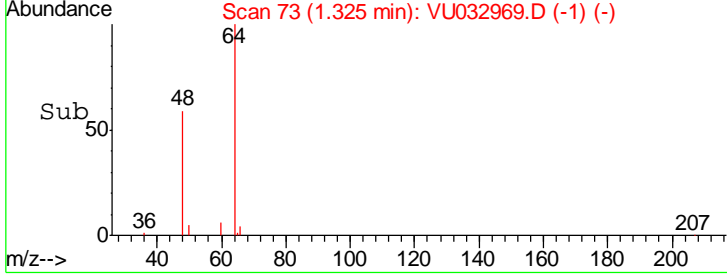
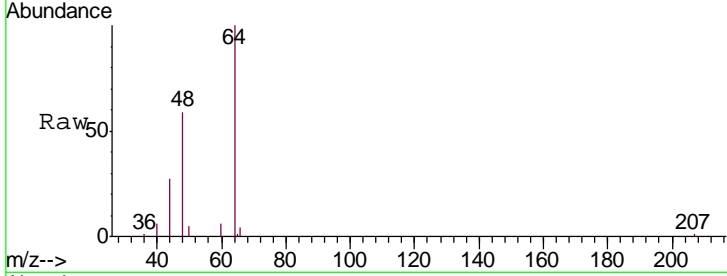




#3
 Chloromethane
 Concen: 0.678 ug/L
 RT: 1.33 min Scan# 73
 Delta R.T. 0.00 min
 Lab File: VU032969.D
 Acq: 22 Jun 2019 00:50

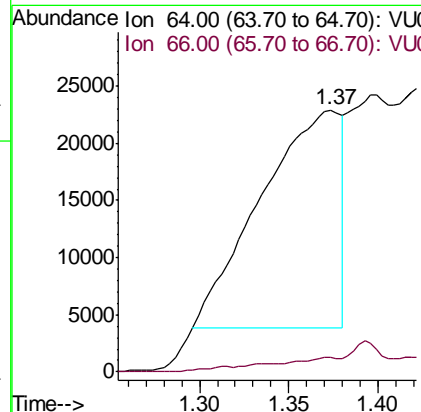
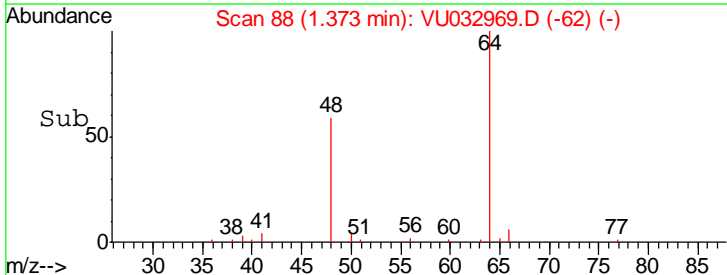
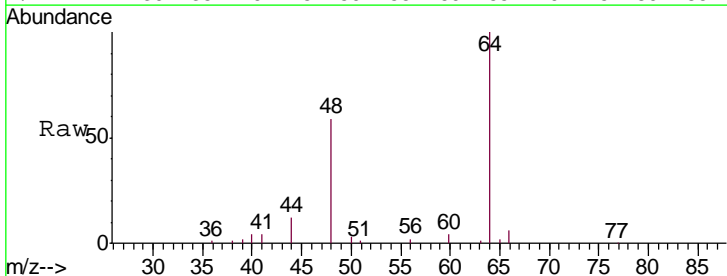
Instrument :
 MSVOA_U
ClientSampled :
 ETF35

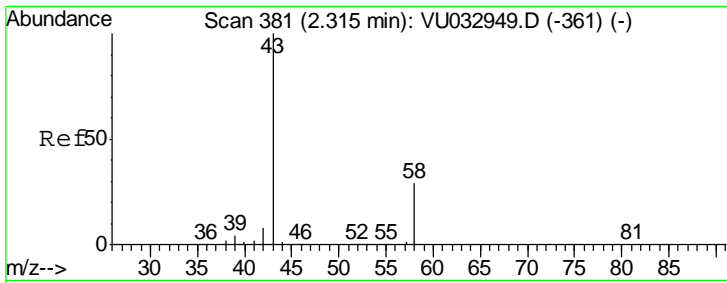
Tgt Ion: 50 Resp: 1207
 Ion Ratio Lower Upper
 50 100
 52 0.0 23.0 42.6#



#8
 Chloroethane
 Concen: 58.627 ug/L
 RT: 1.37 min Scan# 88
 Delta R.T. -0.32 min
 Lab File: VU032969.D
 Acq: 22 Jun 2019 00:50

Tgt Ion: 64 Resp: 59618
 Ion Ratio Lower Upper
 64 100
 66 5.6 22.5 41.7#

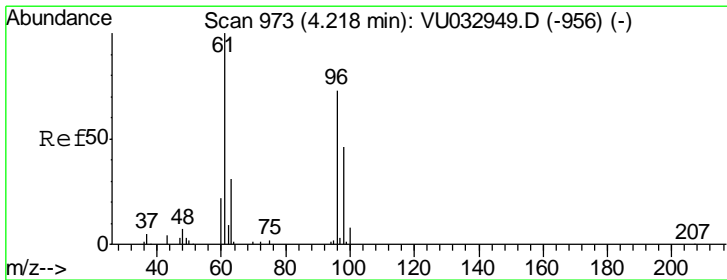
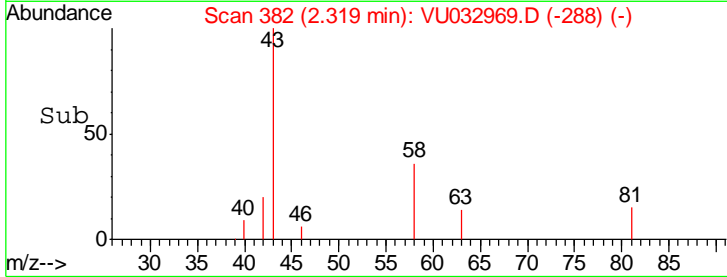
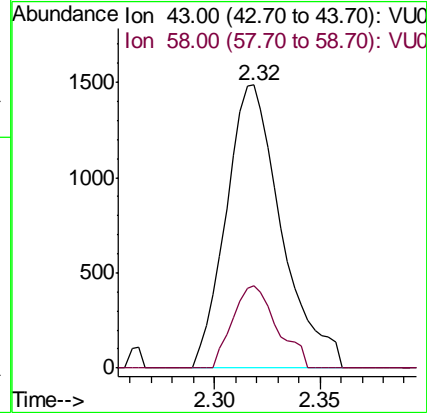
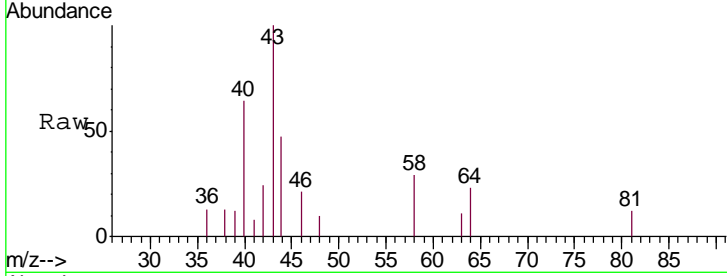




#13
 Acetone
 Concen: 1.766 ug/L
 RT: 2.32 min Scan# 382
 Delta R.T. 0.00 min
 Lab File: VU032969.D
 Acq: 22 Jun 2019 00:50

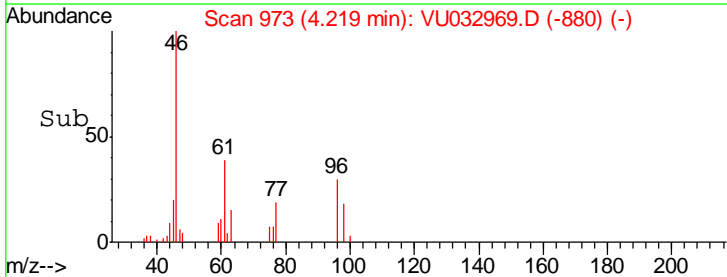
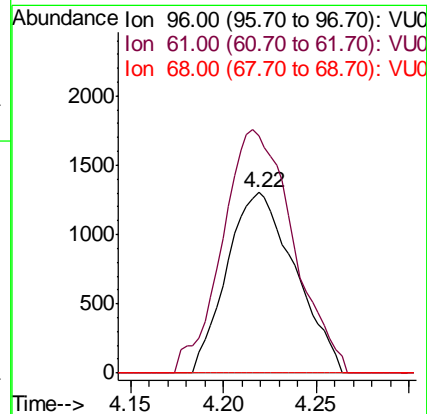
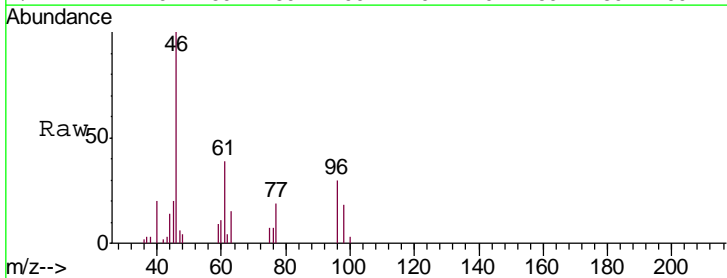
Instrument :
 MSVOA_U
 ClientSampled :
 ETF35

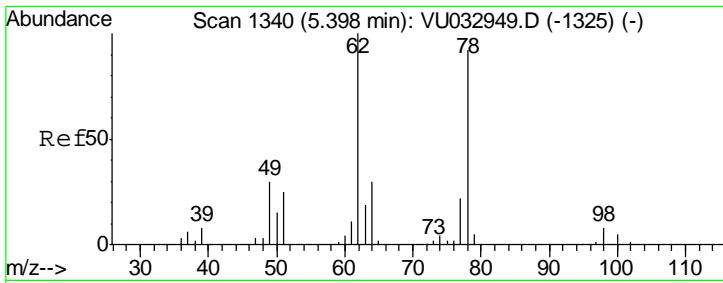
Tgt Ion	Resp	Lower	Upper
43	100		
58	23.3	0.0	60.6



#20
 cis-1,2-Dichloroethene
 Concen: 2.304 ug/L
 RT: 4.22 min Scan# 973
 Delta R.T. 0.00 min
 Lab File: VU032969.D
 Acq: 22 Jun 2019 00:50

Tgt Ion	Resp	Lower	Upper
96	100		
61	131.1	92.4	171.6
68	0.0	0.0	0.0

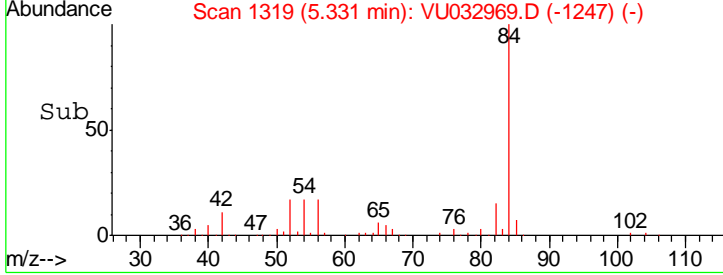
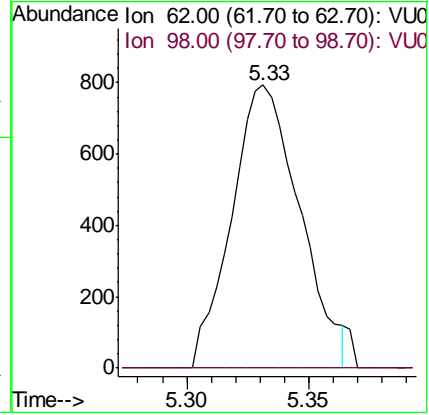
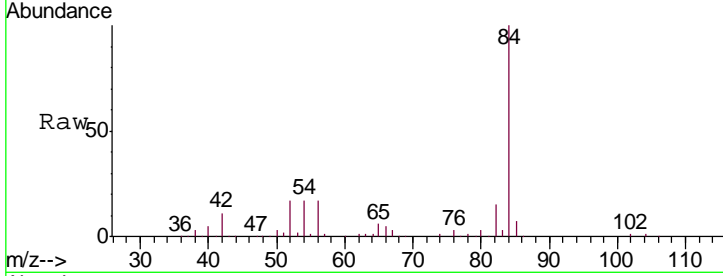




#27
 1,2-Dichloroethane
 Concen: 0.715 ug/L
 RT: 5.33 min Scan# 1319
 Delta R.T. -0.07 min
 Lab File: VU032969.D
 Acq: 22 Jun 2019 00:50

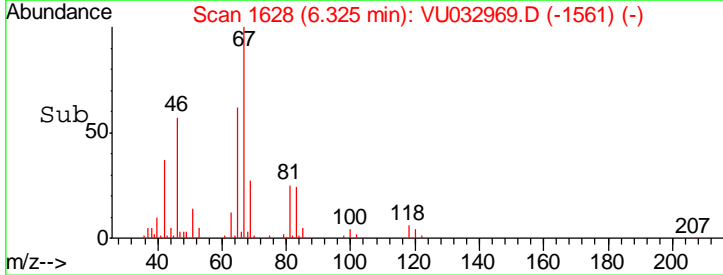
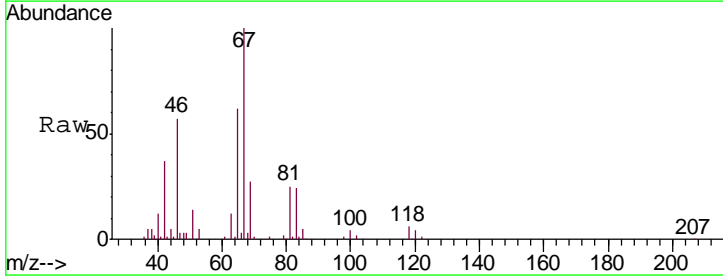
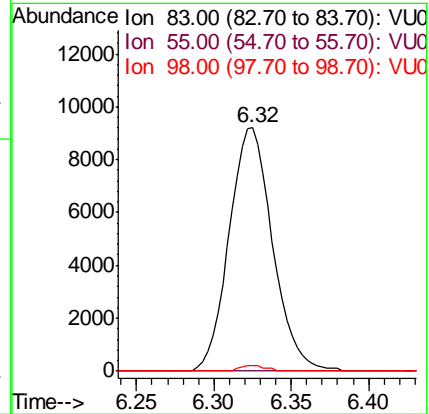
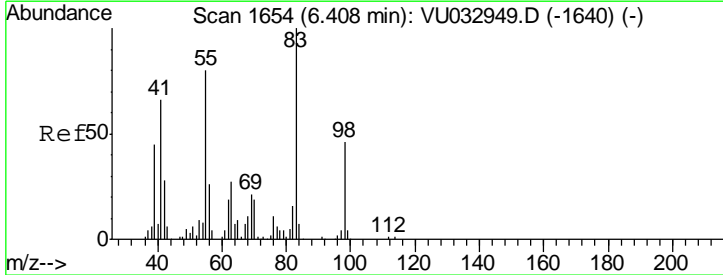
Instrument : MSVOA_U
 ClientSampled : ETF35

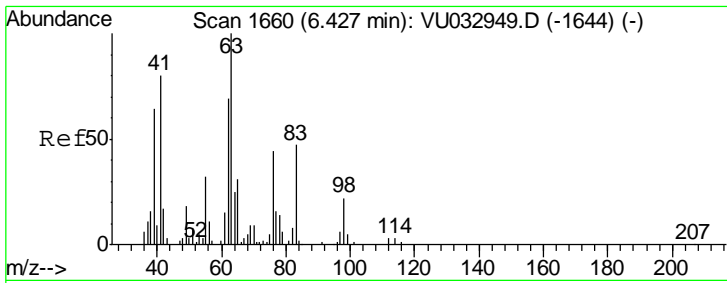
Tgt Ion	Resp	Lower	Upper
62	1534		
98	0.0	6.6	10.0#



#35
 Methylcyclohexane
 Concen: 7.773 ug/L
 RT: 6.32 min Scan# 1628
 Delta R.T. -0.08 min
 Lab File: VU032969.D
 Acq: 22 Jun 2019 00:50

Tgt Ion	Resp	Lower	Upper
83	17937		
55	0.0	62.6	94.0#
98	1.3	37.4	56.0#

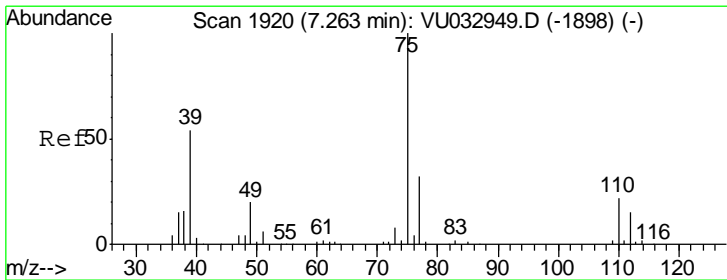
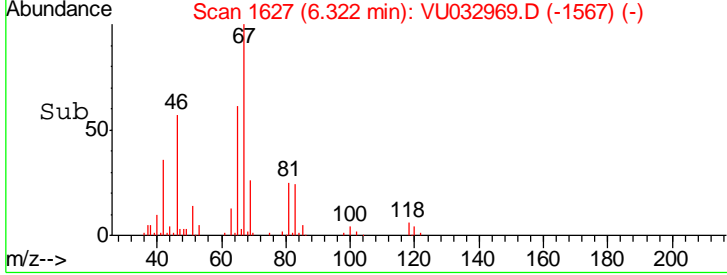
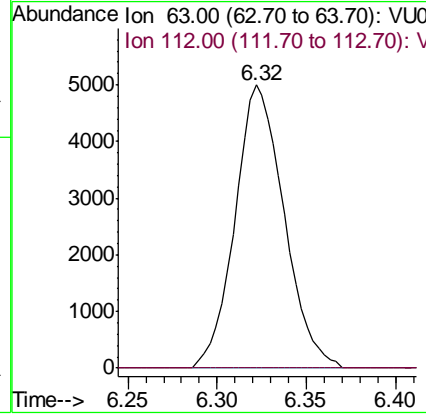
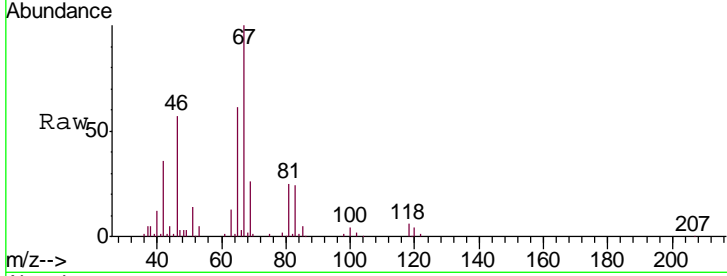




#37
 1,2-Dichloropropane
 Concen: 6.250 ug/L
 RT: 6.32 min Scan# 1627
 Delta R.T. -0.11 min
 Lab File: VU032969.D
 Acq: 22 Jun 2019 00:50

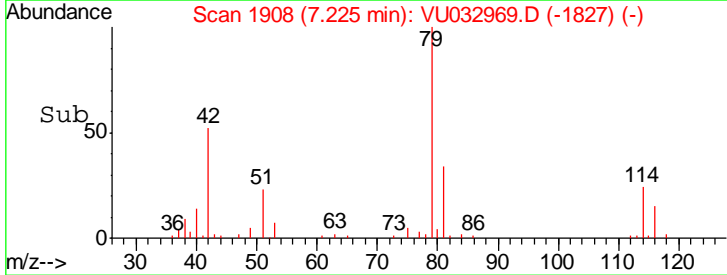
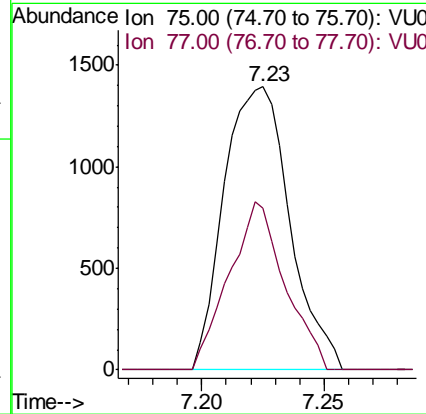
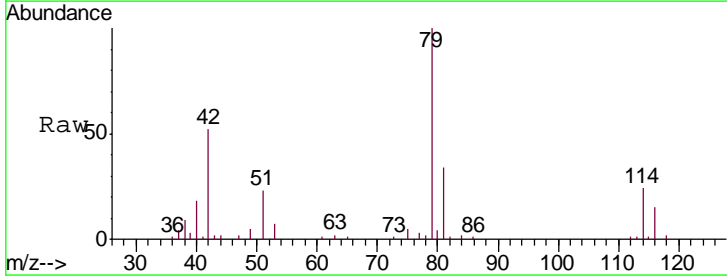
Instrument : MSVOA_U
 ClientSampled : ETF35

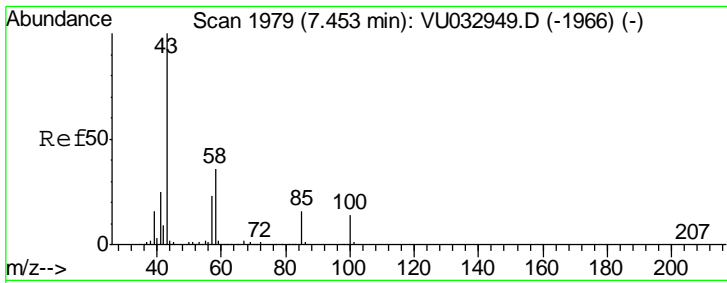
Tgt Ion	Resp	Lower	Upper
63	100		
112	0.0	3.0	4.6#



#39
 cis-1,3-Dichloropropene
 Concen: 1.093 ug/L
 RT: 7.23 min Scan# 1908
 Delta R.T. -0.04 min
 Lab File: VU032969.D
 Acq: 22 Jun 2019 00:50

Tgt Ion	Resp	Lower	Upper
75	100		
77	57.1	21.9	40.7#



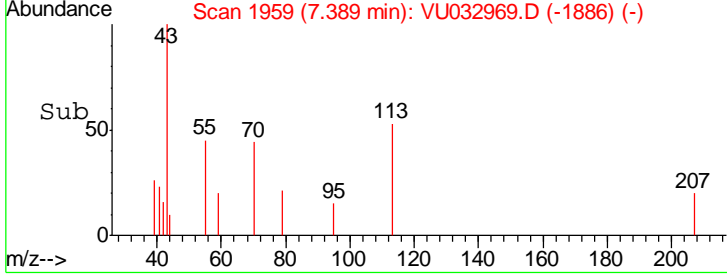
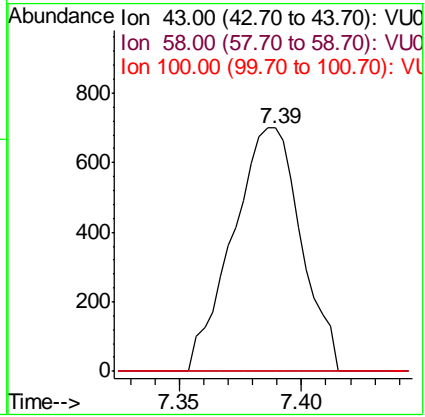
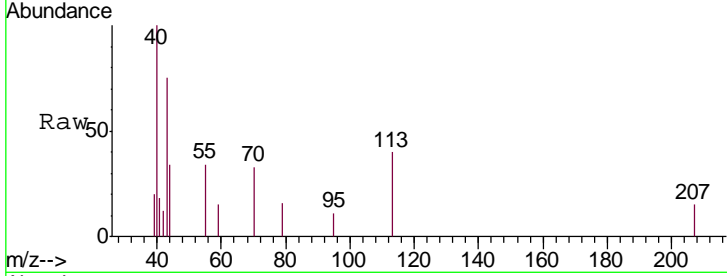


#40
 4-Methyl-2-pentanone
 Concen: 0.554 ug/L
 RT: 7.39 min Scan# 1959
 Delta R.T. -0.06 min
 Lab File: VU032969.D
 Acq: 22 Jun 2019 00:50

Instrument : MSVOA_U
 ClientSampled : ETF35

Tgt Ion: 43 Resp: 1356

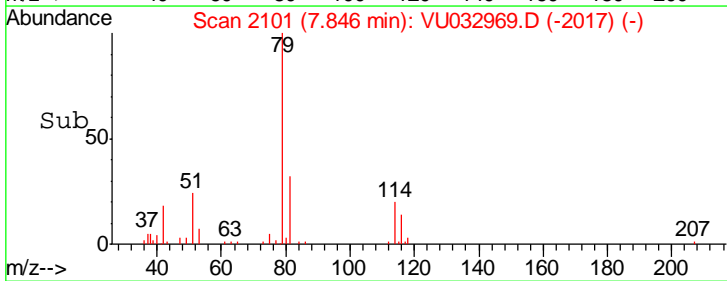
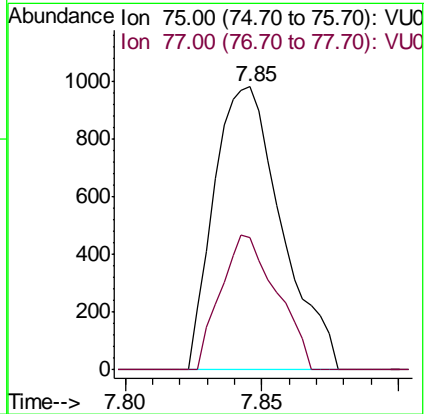
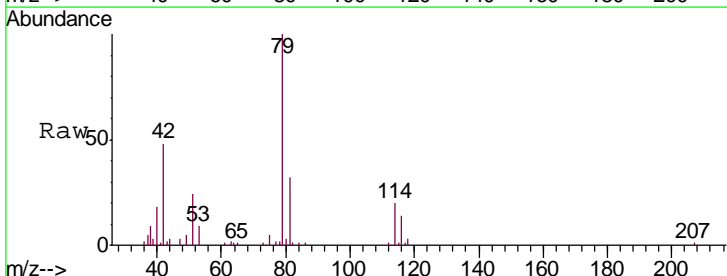
Ion	Ratio	Lower	Upper
43	100		
58	0.0	29.4	44.2#
100	0.0	11.2	16.8#

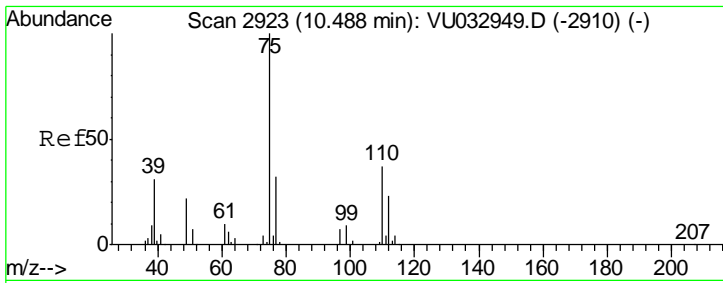


#44
 trans-1,3-Dichloropropene
 Concen: 0.753 ug/L
 RT: 7.85 min Scan# 2101
 Delta R.T. -0.03 min
 Lab File: VU032969.D
 Acq: 22 Jun 2019 00:50

Tgt Ion: 75 Resp: 1688

Ion	Ratio	Lower	Upper
75	100		
77	46.9	21.8	40.4#





#59
 1,2,3-Trichloropropane
 Concen: 5.971 ug/L
 RT: 11.48 min Scan# 3231
 Delta R.T. 0.99 min
 Lab File: VU032969.D
 Acq: 22 Jun 2019 00:50

Instrument :
 MSVOA_U
 ClientSampled :
 ETF35

Tgt Ion: 75 Resp: 12212
 Ion Ratio Lower Upper
 75 100
 77 38.2 25.5 38.3

