

Data Path : Z:\voasrv\HPCHEM1\MSVOA_U\Data\VU062222\
 Data File : VU049347.D
 Acq On : 22 Jun 2022 13:25
 Operator : SY/MD
 Sample : N3392-01 10X
 Misc : 5.0mL/MSVOA_U/WATER
 ALS Vial : 10 Sample Multiplier: 1

Instrument :
 MSVOA_U
 ClientSampleId :

Quant Time: Jun 23 02:05:49 2022
 Quant Method : Z:\voasrv\HPCHEM1\MSVOA_U\Method\SFAMULM061022WMA.M
 Quant Title : VOC Analysis
 QLast Update : Thu Jun 23 02:04:00 2022
 Response via : Initial Calibration

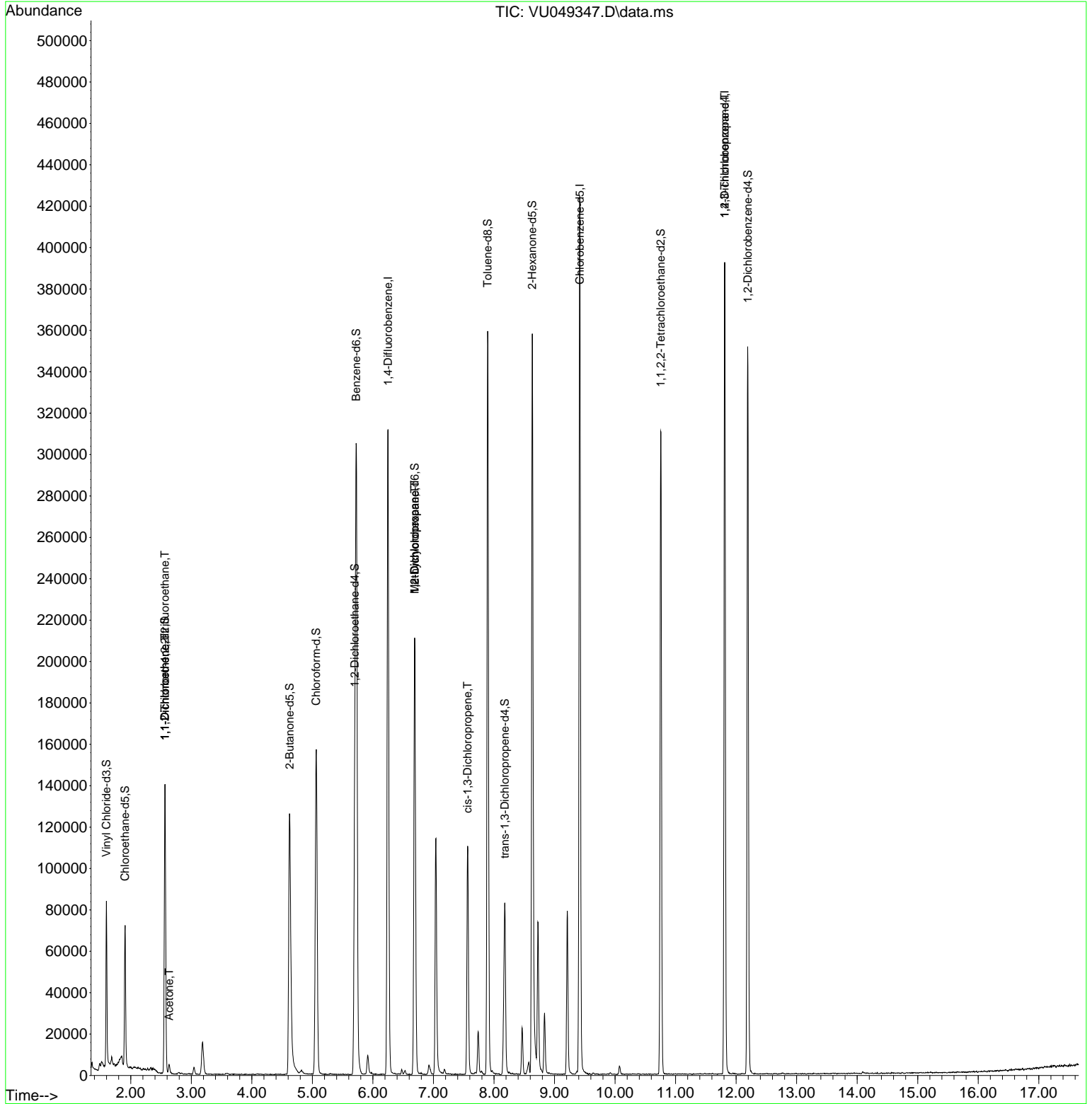
Compound	R.T.	QIon	Response	Conc	Units	Dev(Min)
Internal Standards						
1) 1,4-Difluorobenzene	6.250	114	244180	50.000	ug/L	0.00
28) Chlorobenzene-d5	9.417	117	223622	50.000	ug/L	0.00
58) 1,4-Dichlorobenzene-d4	11.812	152	99178	50.000	ug/L	0.00
System Monitoring Compounds						
4) Vinyl Chloride-d3	1.597	65	57005	37.896	ug/L	0.00
Spiked Amount	50.000	Range 60 - 135	Recovery =	75.800%		
7) Chloroethane-d5	1.906	69	48456	43.872	ug/L	0.00
Spiked Amount	50.000	Range 70 - 130	Recovery =	87.740%		
11) 1,1-Dichloroethene-d2	2.565	63	85011	29.949	ug/L	0.00
Spiked Amount	50.000	Range 60 - 125	Recovery =	59.900%#		
21) 2-Butanone-d5	4.623	46	184588	111.922	ug/L	0.00
Spiked Amount	100.000	Range 40 - 130	Recovery =	111.920%		
24) Chloroform-d	5.063	84	145992	45.495	ug/L	0.00
Spiked Amount	50.000	Range 70 - 125	Recovery =	90.980%		
26) 1,2-Dichloroethane-d4	5.700	65	98598	47.426	ug/L	0.00
Spiked Amount	50.000	Range 70 - 125	Recovery =	94.860%		
32) Benzene-d6	5.726	84	268664	48.451	ug/L	0.00
Spiked Amount	50.000	Range 70 - 125	Recovery =	96.900%		
36) 1,2-Dichloropropane-d6	6.690	67	101936	54.683	ug/L	0.00
Spiked Amount	50.000	Range 70 - 120	Recovery =	109.360%		
41) Toluene-d8	7.896	98	234186	47.888	ug/L	0.00
Spiked Amount	50.000	Range 80 - 120	Recovery =	95.780%		
43) trans-1,3-Dichloroprop...	8.179	79	43452	49.547	ug/L	0.00
Spiked Amount	50.000	Range 60 - 125	Recovery =	99.100%		
47) 2-Hexanone-d5	8.632	63	116186	119.088	ug/L	0.00
Spiked Amount	100.000	Range 45 - 130	Recovery =	119.090%		
56) 1,1,2,2-Tetrachloroeth...	10.754	84	156637	50.310	ug/L	0.00
Spiked Amount	50.000	Range 65 - 120	Recovery =	100.620%		
66) 1,2-Dichlorobenzene-d4	12.192	152	87897	50.936	ug/L	0.00
Spiked Amount	50.000	Range 80 - 120	Recovery =	101.880%		
Target Compounds						
10) 1,1,2-Trichloro-1,2,2-...	2.565	101	639	0.371	ug/L #	19
12) 1,1-Dichloroethene	2.565	96	567	0.377	ug/L #	1
13) Acetone	2.632	43	4929	3.798	ug/L	97
35) Methylcyclohexane	6.690	83	22311	8.753	ug/L #	19
37) 1,2-Dichloropropane	6.690	63	10744	5.259	ug/L #	88
39) cis-1,3-Dichloropropene	7.562	75	2773	0.922	ug/L #	13
60) 1,2,3-Trichloropropane	11.812	75	12844	5.106	ug/L #	65

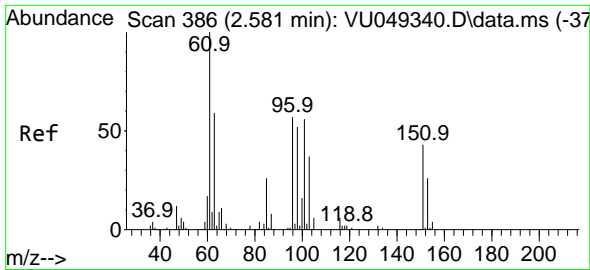
(#) = qualifier out of range (m) = manual integration (+) = signals summed

Data Path : Z:\voasrv\HPCHEM1\MSVOA_U\Data\VU062222\
 Data File : VU049347.D
 Acq On : 22 Jun 2022 13:25
 Operator : SY/MD
 Sample : N3392-01 10X
 Misc : 5.0mL/MSVOA_U/WATER
 ALS Vial : 10 Sample Multiplier: 1

Instrument :
 MSVOA_U
 ClientSampleId :

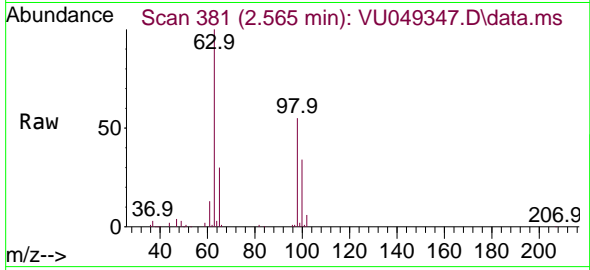
Quant Time: Jun 23 02:05:49 2022
 Quant Method : Z:\voasrv\HPCHEM1\MSVOA_U\Method\SFAMULM061022WMA.M
 Quant Title : VOC Analysis
 QLast Update : Thu Jun 23 02:04:00 2022
 Response via : Initial Calibration





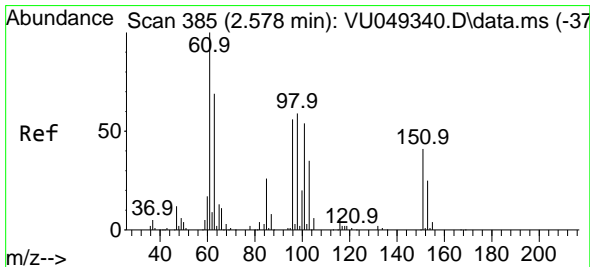
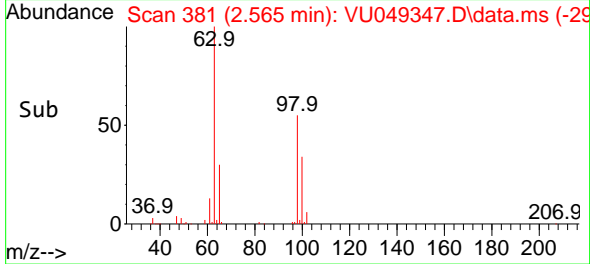
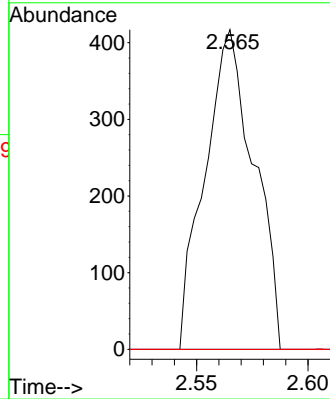
#10
 1,1,2-Trichloro-1,2,2-trifluoroethane
 Concen: 0.371 ug/L
 RT: 2.565 min Scan# 381
 Delta R.T. -0.016 min
 Lab File: VU049347.D
 Acq: 22 Jun 2022 13:25

Instrument :
 MSVOA_U
 ClientSampleId :



Tgt Ion: 101 Resp: 639

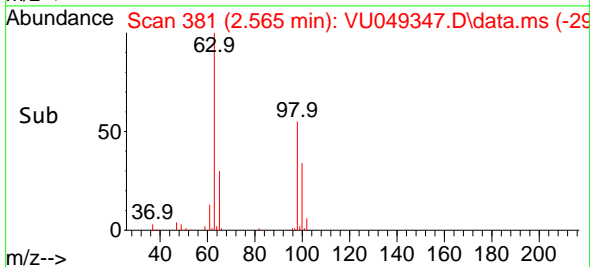
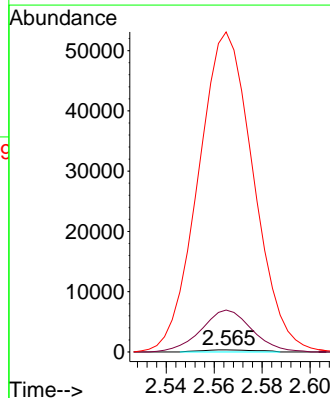
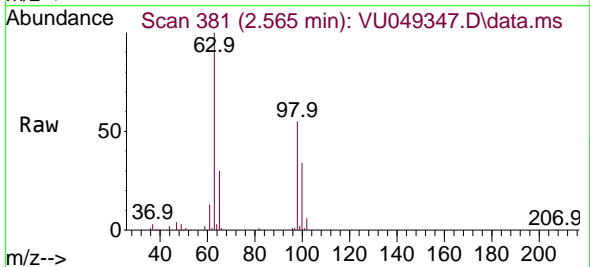
Ion	Ratio	Lower	Upper
101	100		
85	0.0	35.2	52.8#
151	0.0	61.4	92.2#

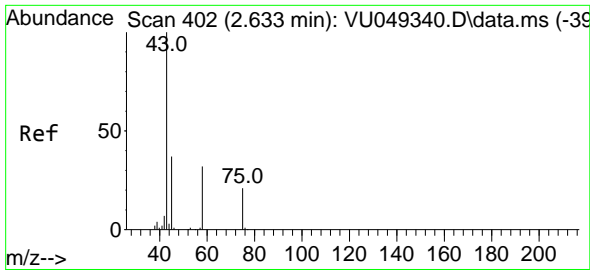


#12
 1,1-Dichloroethene
 Concen: 0.377 ug/L
 RT: 2.565 min Scan# 381
 Delta R.T. -0.013 min
 Lab File: VU049347.D
 Acq: 22 Jun 2022 13:25

Tgt Ion: 96 Resp: 567

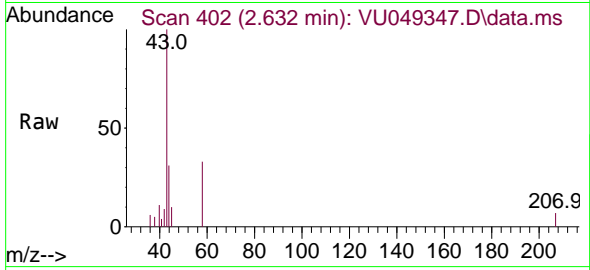
Ion	Ratio	Lower	Upper
96	100		
61	1942.2	123.5	229.3#
63	14831.3	86.0	159.8#



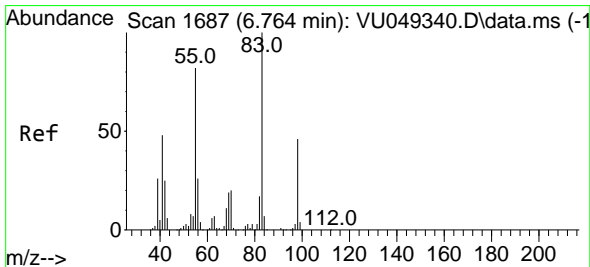
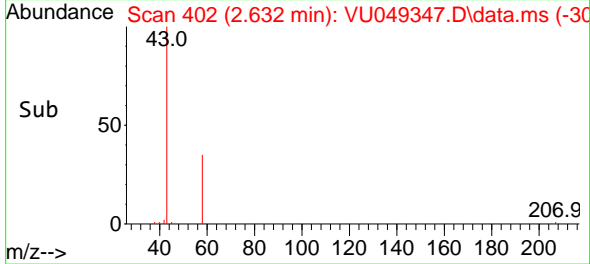
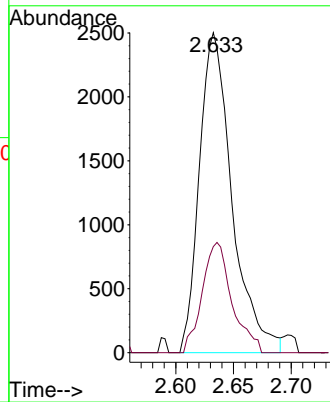


#13
 Acetone
 Concen: 3.798 ug/L
 RT: 2.632 min Scan# 402
 Delta R.T. -0.000 min
 Lab File: VU049347.D
 Acq: 22 Jun 2022 13:25

Instrument : MSVOA_U
 ClientSampleId :

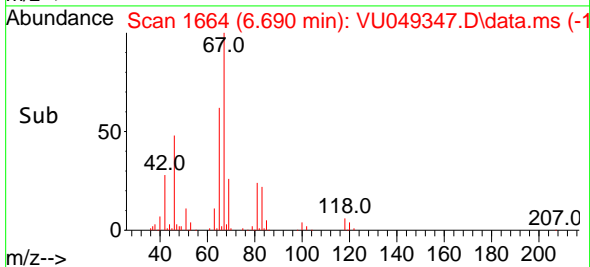
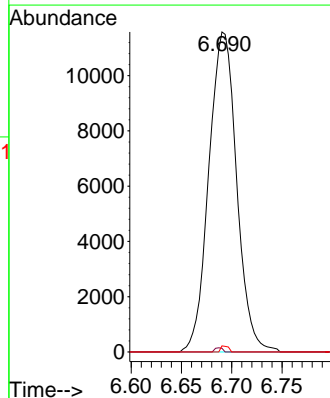
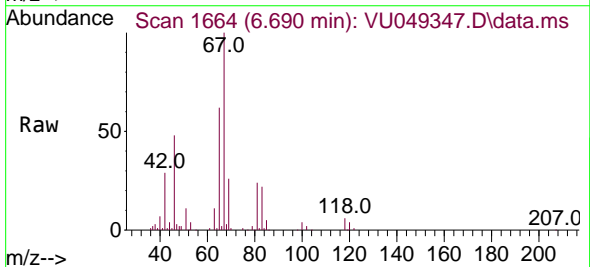


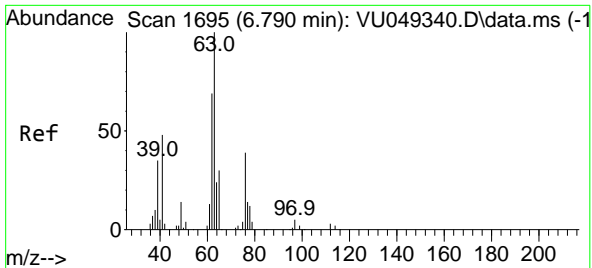
Tgt Ion: 43 Resp: 4929
 Ion Ratio Lower Upper
 43 100
 58 31.3 0.0 66.4



#35
 Methylcyclohexane
 Concen: 8.753 ug/L
 RT: 6.690 min Scan# 1664
 Delta R.T. -0.074 min
 Lab File: VU049347.D
 Acq: 22 Jun 2022 13:25

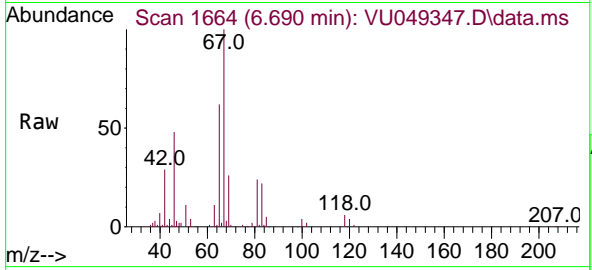
Tgt Ion: 83 Resp: 22311
 Ion Ratio Lower Upper
 83 100
 55 0.4 61.0 91.6#
 98 0.5 36.8 55.2#



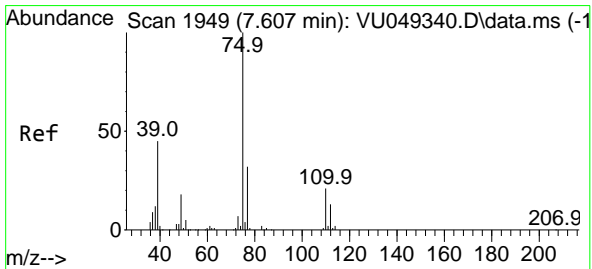
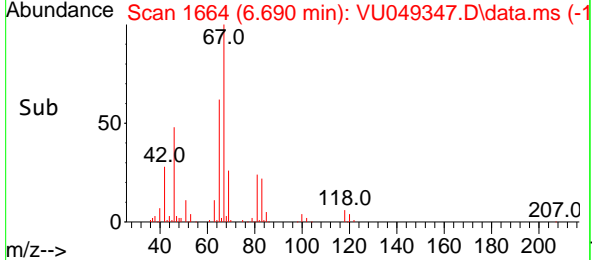
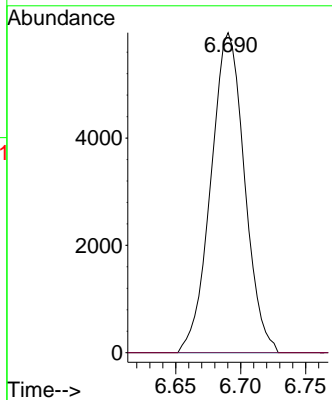


#37
 1,2-Dichloropropane
 Concen: 5.259 ug/L
 RT: 6.690 min Scan# 1
 Delta R.T. -0.100 min
 Lab File: VU049347.D
 Acq: 22 Jun 2022 13:25

Instrument : MSVOA_U
 ClientSampleId :

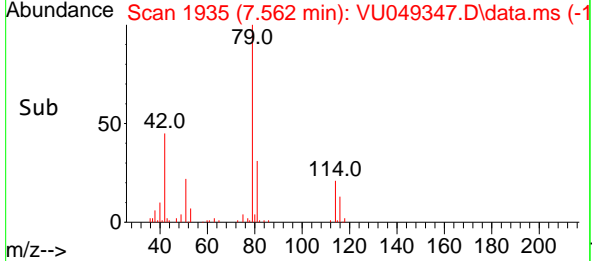
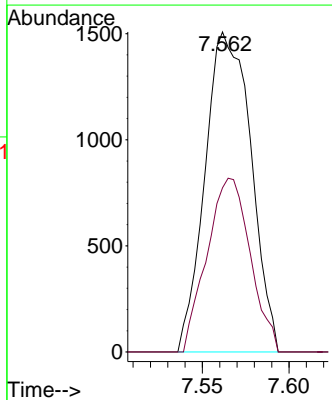
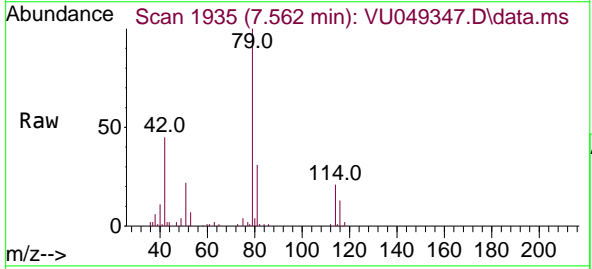


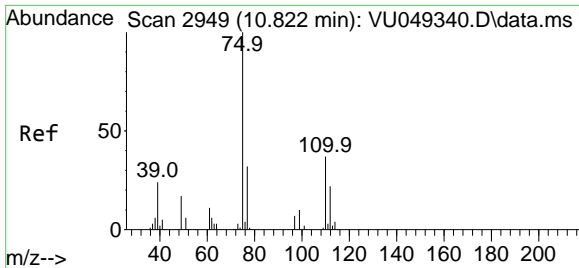
Tgt Ion: 63 Resp: 10744
 Ion Ratio Lower Upper
 63 100
 112 0.0 3.2 4.8#



#39
 cis-1,3-Dichloropropene
 Concen: 0.922 ug/L
 RT: 7.562 min Scan# 1935
 Delta R.T. -0.045 min
 Lab File: VU049347.D
 Acq: 22 Jun 2022 13:25

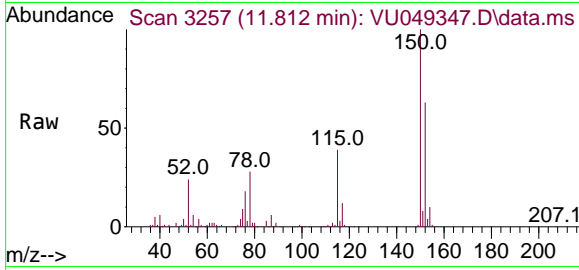
Tgt Ion: 75 Resp: 2773
 Ion Ratio Lower Upper
 75 100
 77 80.8 22.6 42.0#





#60
 1,2,3-Trichloropropane
 Concen: 5.106 ug/L
 RT: 11.812 min Scan# 31
 Delta R.T. 0.990 min
 Lab File: VU049347.D
 Acq: 22 Jun 2022 13:25

Instrument :
 MSVOA_U
 ClientSampleId :



Tgt Ion: 75 Resp: 12844

Ion	Ratio	Lower	Upper
75	100		
77	35.6	26.6	40.0
110	0.9	30.2	45.4#

