

Data Path : Z:\VOASRV\HPCHEM1\MSVOA U\DATA\VU062320\
 Data File : VU039037.D
 Acq On : 23 Jun 2020 13:43
 Operator : SY/MD
 Sample : VSTD00503
 Misc : 25.0mL/MSVOA U/WATER
 ALS Vial : 6 Sample Multiplier: 1

Instrument :
 MSVOA_U
 ClientSampleId :
 VSTD00503

Quant Time: Jun 24 00:29:12 2020
 Quant Method : Z:\VOASRV\HPCHEM1\MSVOA_U\METHOD\SOMUTR062320WMA.M
 Quant Title : TRACE VOA SOM01.0
 QLast Update : Wed Jun 24 00:26:38 2020
 Response via : Initial Calibration

Internal Standards	R.T.	QIon	Response	Conc	Units	Dev(Min)
1) 1,4-Difluorobenzene	6.28	114	281234	5.00	ug/L	0.00
28) Chlorobenzene-d5	9.43	117	281977	5.00	ug/L	0.00
60) 1,4-Dichlorobenzene-d4	11.82	152	137905	5.00	ug/L	0.00

System Monitoring Compounds

4) Vinyl Chloride-d3	1.61	65	101121	4.91	ug/L	0.00
7) Chloroethane-d5	1.93	69	83852	4.93	ug/L	0.00
11) 1,1-Dichloroethene-d2	2.59	63	193621	4.89	ug/L	0.00
20) 2-Butanone-d5	4.67	46	365968	49.24	ug/L	0.00
24) Chloroform-d	5.10	84	198568	4.90	ug/L	0.00
26) 1,2-Dichloroethane-d4	5.74	65	120658	4.84	ug/L	0.00
32) Benzene-d6	5.76	84	388520	4.97	ug/L	0.00
36) 1,2-Dichloropropane-d6	6.72	67	126730	4.82	ug/L	0.00
41) Toluene-d8	7.92	98	331924	5.08	ug/L	0.00
43) trans-1,3-Dichloropropene-	8.20	79	57040	4.99	ug/L	0.00
46) 2-Hexanone-d5	8.65	63	307158	52.12	ug/L	0.00
57) 1,1,2,2-Tetrachloroethane-	10.77	84	119801	4.91	ug/L	0.00
64) 1,2-Dichlorobenzene-d4	12.20	152	120410	4.69	ug/L	0.00

Target Compounds

Target Compounds	R.T.	QIon	Response	Conc	Units	Qvalue
2) Dichlorodifluoromethane	1.39	85	124052	4.929	ug/L	100
3) Chloromethane	1.53	50	134715	4.973	ug/L	100
5) Vinyl chloride	1.62	62	137217	5.023	ug/L	100
6) Bromomethane	1.88	94	70810	4.814	ug/L	100
8) Chloroethane	1.95	64	80705	4.901	ug/L	100
9) Trichlorofluoromethane	2.16	101	170167	4.865	ug/L	100
10) 1,1,2-Trichloro-1,2,2-trif	2.61	101	100382	4.930	ug/L	100
12) 1,1-Dichloroethene	2.61	96	94956	4.875	ug/L	100
13) Acetone	2.67	43	230658	45.700	ug/L	100
14) Carbon disulfide	2.82	76	315927	4.865	ug/L	100
15) Methyl Acetate	2.98	43	60098	5.014	ug/L	100
16) Methylene chloride	3.08	84	115956	4.825	ug/L	100
17) Methyl tert-butyl Ether	3.40	73	274726	4.955	ug/L	100
18) trans-1,2-Dichloroethene	3.39	96	100619	4.828	ug/L	100
19) 1,1-Dichloroethane	3.91	63	205211	4.953	ug/L	100
21) 2-Butanone	4.75	43	387068	50.441	ug/L	100
22) cis-1,2-Dichloroethene	4.71	96	109703	4.878	ug/L	100
23) Bromochloromethane	5.01	128	52709	5.093	ug/L	100
25) Chloroform	5.12	83	206325	4.957	ug/L	100
27) 1,2-Dichloroethane	5.83	62	147284	4.966	ug/L	100
29) 1,1,1-Trichloroethane	5.35	97	172092	4.890	ug/L	100
30) Cyclohexane	5.42	56	159411	4.869	ug/L	100
31) Carbon tetrachloride	5.56	117	141860	4.841	ug/L	100
33) Benzene	5.81	78	439016	4.955	ug/L	100
34) Trichloroethene	6.57	95	104170	4.861	ug/L	100
35) Methylcyclohexane	6.79	83	157738	4.961	ug/L	100
37) 1,2-Dichloropropane	6.82	63	119147	4.964	ug/L	100
38) Bromodichloromethane	7.13	83	147538	4.930	ug/L	100
39) cis-1,3-Dichloropropene	7.63	75	167919	5.047	ug/L	100
40) 4-Methyl-2-pentanone	7.82	43	927806	51.790	ug/L	100

Data Path : Z:\VOASRV\HPCHEM1\MSVOA U\DATA\VU062320\
 Data File : VU039037.D
 Acq On : 23 Jun 2020 13:43
 Operator : SY/MD
 Sample : VSTD00503
 Misc : 25.0mL/MSVOA U/WATER
 ALS Vial : 6 Sample Multiplier: 1

Instrument :
 MSVOA_U
 ClientSampleId :
 VSTD00503

Quant Time: Jun 24 00:29:12 2020
 Quant Method : Z:\VOASRV\HPCHEM1\MSVOA_U\METHOD\SOMUTR062320WMA.M
 Quant Title : TRACE VOA SOM01.0
 QLast Update : Wed Jun 24 00:26:38 2020
 Response via : Initial Calibration

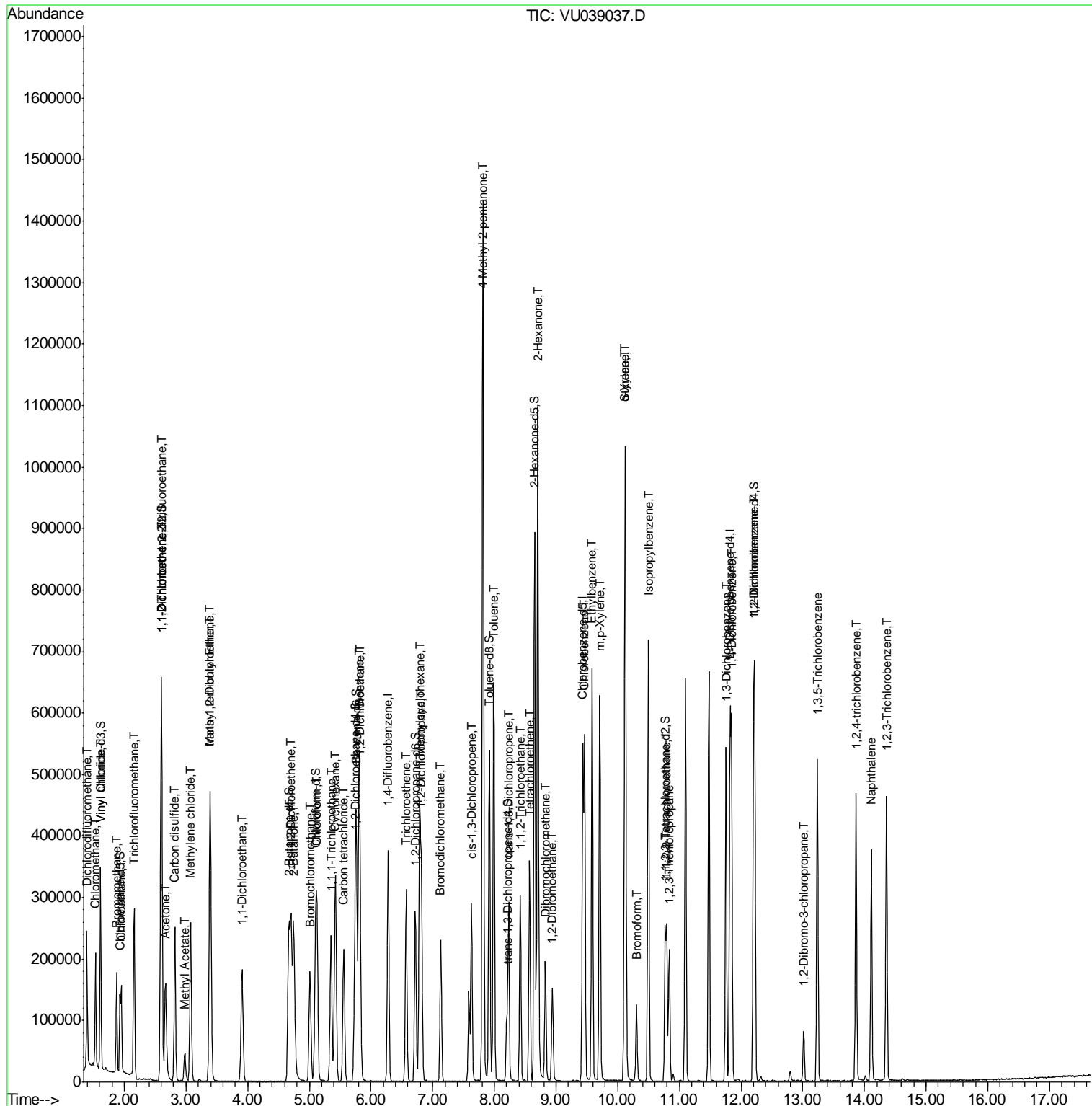
Internal Standards	R.T.	QIon	Response	Conc	Units	Dev(Min)
42) Toluene	7.99	91	443249	5.040	ug/L	100
44) trans-1,3-Dichloropropene	8.23	75	153938	4.945	ug/L	100
45) 1,1,2-Trichloroethane	8.42	97	87683	4.915	ug/L	100
47) Tetrachloroethene	8.57	164	73934	4.787	ug/L	100
48) 2-Hexanone	8.70	43	690761	52.596	ug/L	100
49) Dibromochloromethane	8.83	129	95731	4.935	ug/L	100
50) 1,2-Dibromoethane	8.94	107	84070	4.984	ug/L	100
51) Chlorobenzene	9.46	112	273069	4.933	ug/L	100
52) Ethylbenzene	9.58	91	453188	4.903	ug/L	100
53) m,p-Xylene	9.71	106	171799	5.054	ug/L	100
54) o-Xylene	10.11	106	166562	5.101	ug/L	100
55) Styrene	10.13	104	295339	5.150	ug/L	100
56) Isopropylbenzene	10.50	105	432993	5.061	ug/L	100
58) 1,1,2,2-Tetrachloroethane	10.80	83	118832	4.982	ug/L	100
59) 1,2,3-Trichloropropane	10.83	75	87826	4.853	ug/L	100
61) Bromoform	10.31	173	54037	4.797	ug/L	100
62) 1,3-Dichlorobenzene	11.75	146	203246	4.957	ug/L	100
63) 1,4-Dichlorobenzene	11.85	146	203583	4.820	ug/L	100
65) 1,2-Dichlorobenzene	12.22	146	196910	4.789	ug/L	100
66) 1,2-Dibromo-3-chloropropan	13.01	75	21735	4.792	ug/L	100
67) 1,3,5-Trichlorobenzene	13.24	180	145407	4.791	ug/L	100
68) 1,2,4-trichlorobenzene	13.86	180	130663	4.727	ug/L	100
69) Naphthalene	14.11	128	282090	4.783	ug/L	100
70) 1,2,3-Trichlorobenzene	14.36	180	129346	4.848	ug/L	100

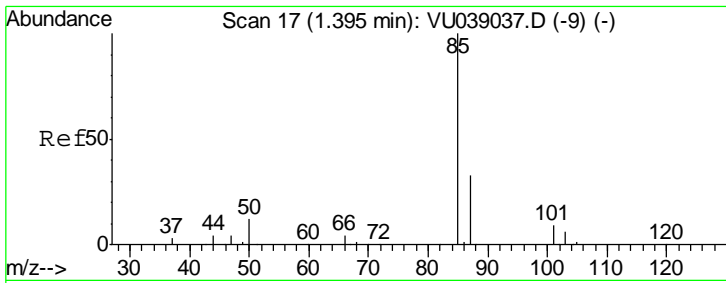
(#) = qualifier out of range (m) = manual integration (+) = signals summed

Data Path : Z:\VOASRV\HPCHEM1\MSVOA U\DATA\VU062320\
 Data File : VU039037.D
 Acq On : 23 Jun 2020 13:43
 Operator : SY/MD
 Sample : VSTD00503
 Misc : 25.0mL/MSVOA U/WATER
 ALS Vial : 6 Sample Multiplier: 1

Instrument :
 MSVOA_U
 Client Sampled :
 VSTD00503

Quant Time: Jun 24 00:29:12 2020
 Quant Method : Z:\VOASRV\HPCHEM1\MSVOA_U\METHOD\SOMUTR062320WMA.M
 Quant Title : TRACE VOA SOM01.0
 QLast Update : Wed Jun 24 00:26:38 2020
 Response via : Initial Calibration

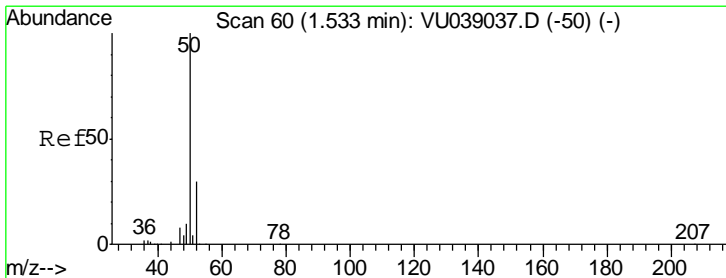
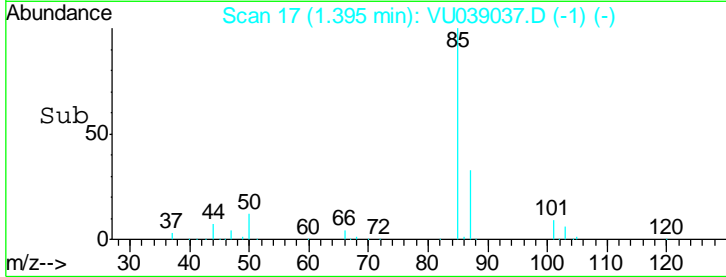
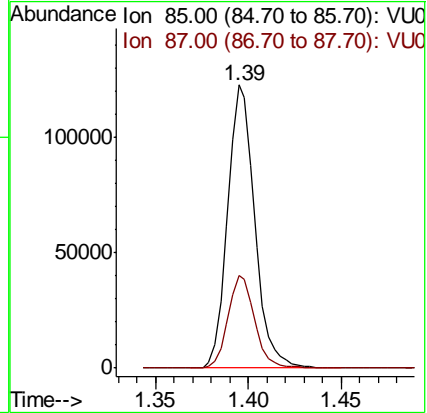
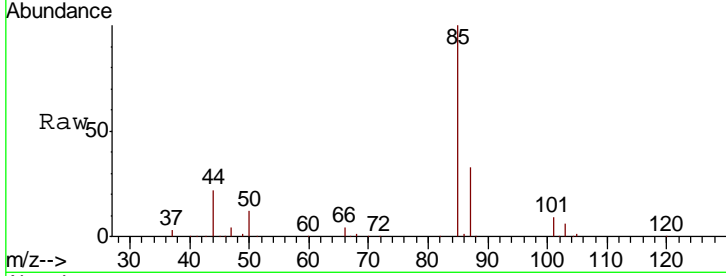




#2
 Dichlorodifluoromethane
 Concen: 4.929 ug/L
 RT: 1.39 min Scan# 17
 Delta R.T. 0.00 min
 Lab File: VU039037.D
 Acq: 23 Jun 2020 13:43

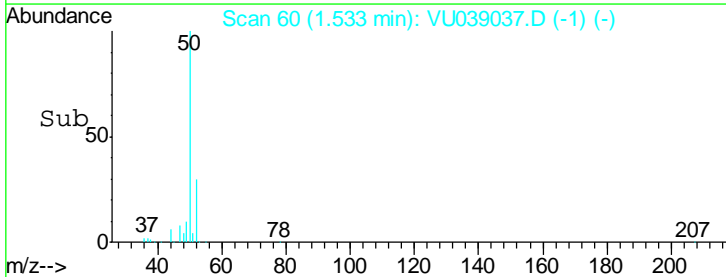
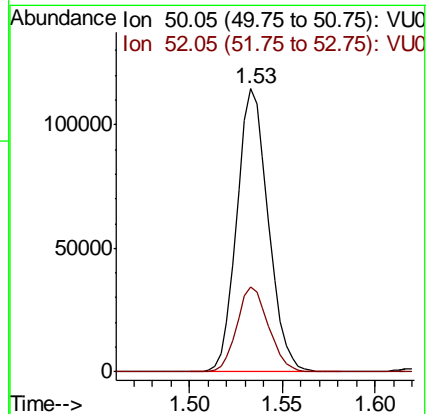
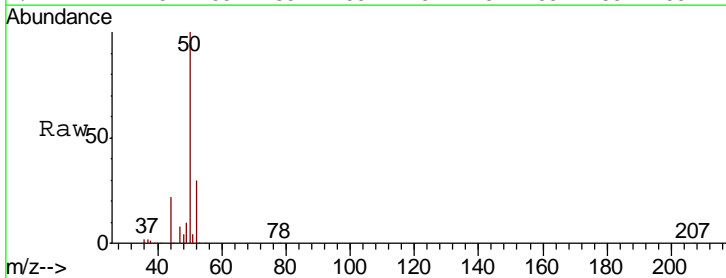
Instrument :
 MSVOA_U
 ClientSampleId :
 VSTD00503

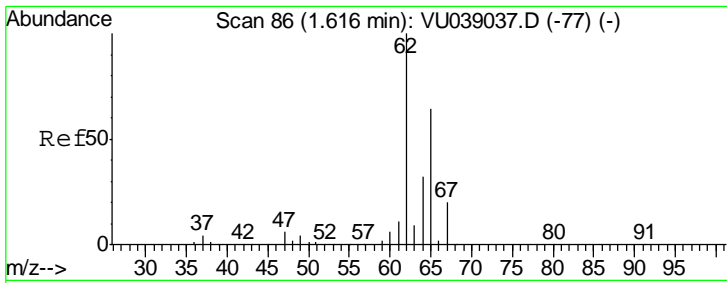
Tgt Ion: 85 Resp: 124052
 Ion Ratio Lower Upper
 85 100
 87 32.2 25.8 38.6



#3
 Chloromethane
 Concen: 4.973 ug/L
 RT: 1.53 min Scan# 60
 Delta R.T. 0.00 min
 Lab File: VU039037.D
 Acq: 23 Jun 2020 13:43

Tgt Ion: 50 Resp: 134715
 Ion Ratio Lower Upper
 50 100
 52 30.2 21.1 39.3

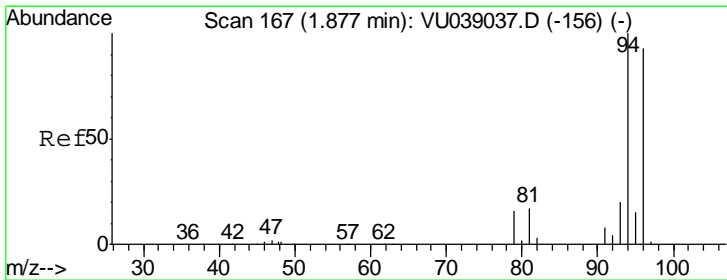
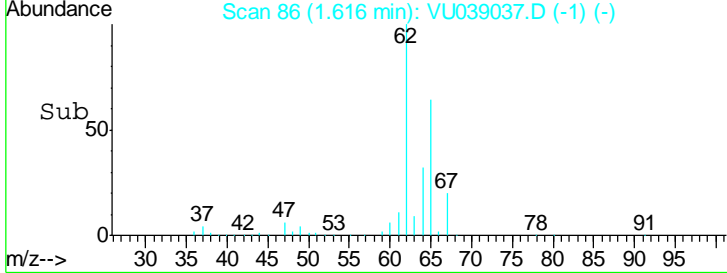
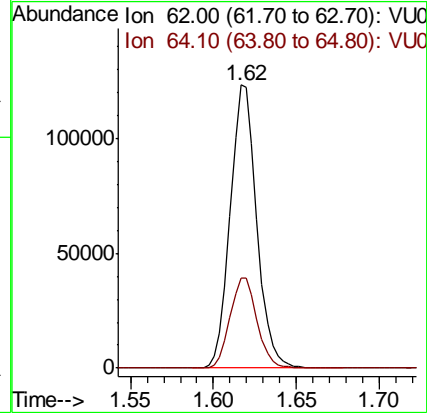
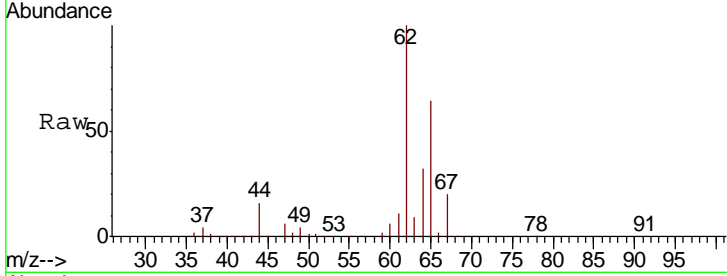




#5
 Vinyl chloride
 Concen: 5.023 ug/L
 RT: 1.62 min Scan# 86
 Delta R.T. 0.00 min
 Lab File: VU039037.D
 Acq: 23 Jun 2020 13:43

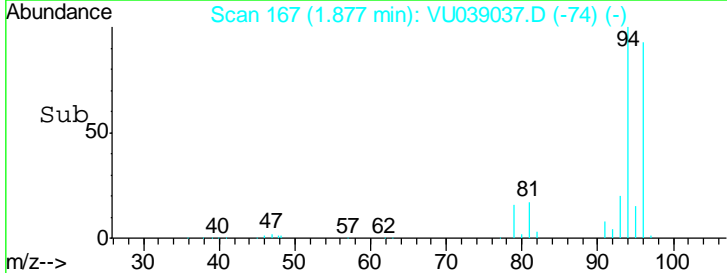
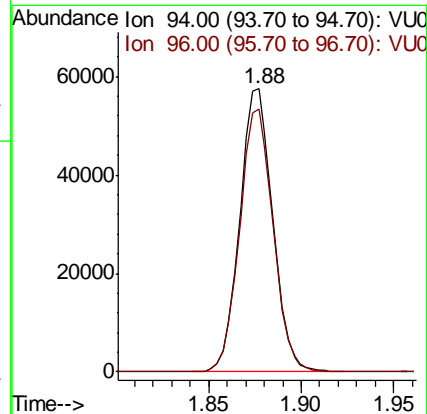
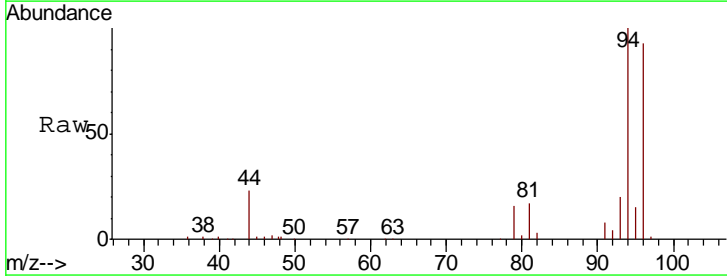
Instrument :
 MSVOA_U
 ClientSampled :
 VSTD00503

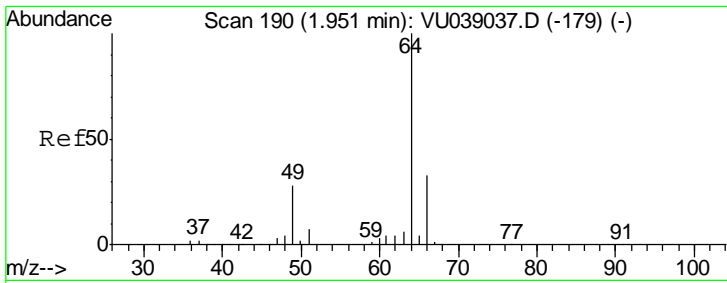
Tgt Ion: 62 Resp: 137217
 Ion Ratio Lower Upper
 62 100
 64 32.0 22.4 41.6



#6
 Bromomethane
 Concen: 4.814 ug/L
 RT: 1.88 min Scan# 167
 Delta R.T. 0.00 min
 Lab File: VU039037.D
 Acq: 23 Jun 2020 13:43

Tgt Ion: 94 Resp: 70810
 Ion Ratio Lower Upper
 94 100
 96 92.7 64.9 120.5



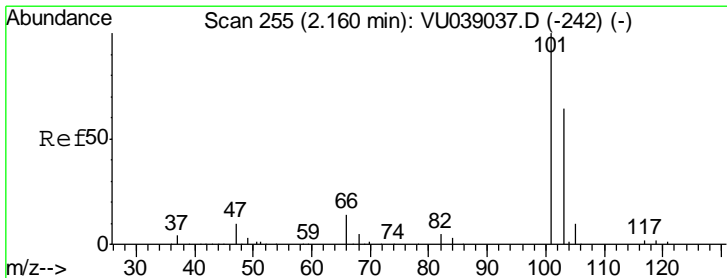
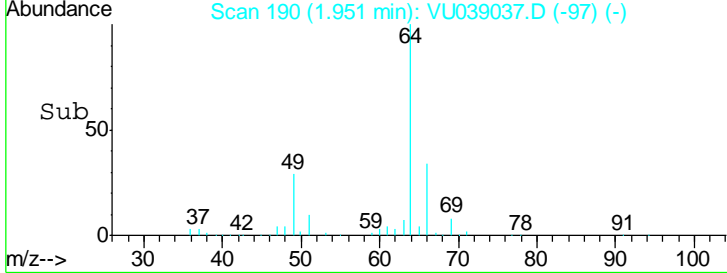
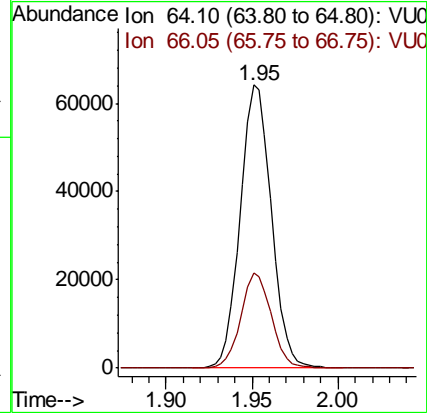
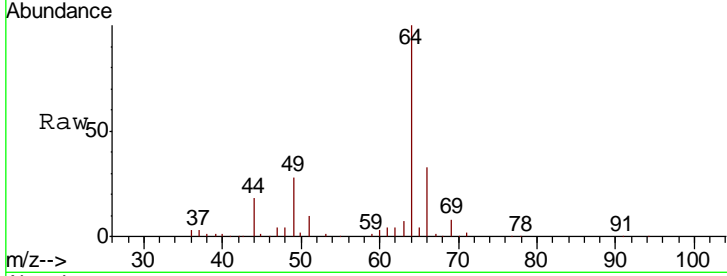


#8
 Chloroethane
 Concen: 4.901 ug/L
 RT: 1.95 min Scan# 190
 Delta R.T. 0.00 min
 Lab File: VU039037.D
 Acq: 23 Jun 2020 13:43

Instrument : MSVOA_U
 ClientSampled : VSTD00503

Tgt Ion: 64 Resp: 80705

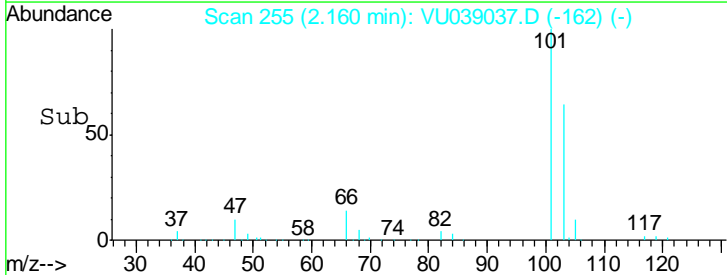
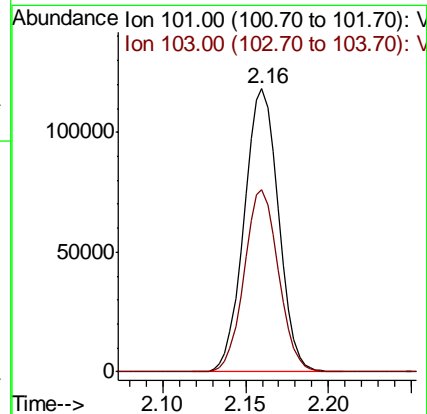
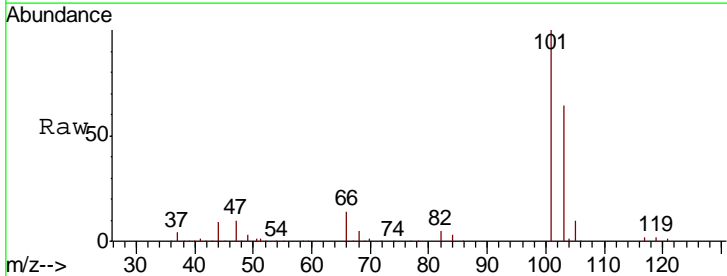
Ion	Ratio	Lower	Upper
64	100		
66	33.4	23.4	43.4

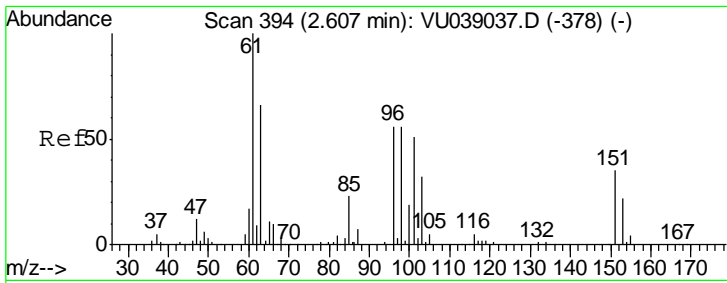


#9
 Trichlorofluoromethane
 Concen: 4.865 ug/L
 RT: 2.16 min Scan# 255
 Delta R.T. 0.00 min
 Lab File: VU039037.D
 Acq: 23 Jun 2020 13:43

Tgt Ion: 101 Resp: 170167

Ion	Ratio	Lower	Upper
101	100		
103	64.2	51.4	77.0





#10

1,1,2-Trichloro-1,2,2-trifluoroethane

Concen: 4.930 ug/L

RT: 2.61 min Scan# 394

Delta R.T. 0.00 min

Lab File: VU039037.D

Acq: 23 Jun 2020 13:43

Instrument :
MSVOA_U
ClientSampled :
VSTD00503

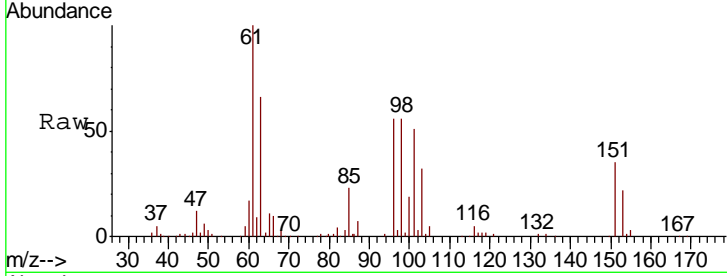
Tgt Ion: 101 Resp: 100382

Ion Ratio Lower Upper

101 100

85 45.3 36.2 54.4

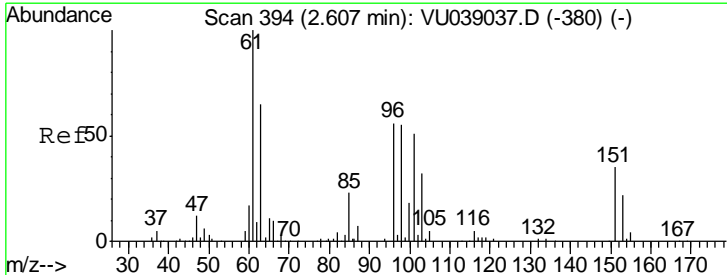
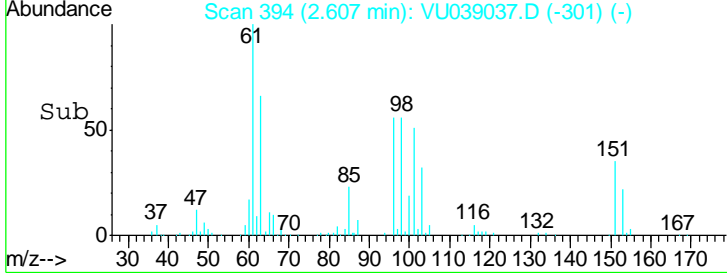
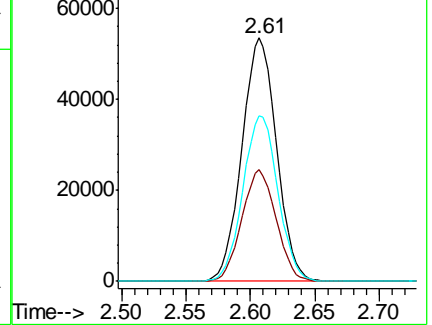
151 68.8 55.0 82.6



Abundance Ion 101.00 (100.70 to 101.70): V

Ion 85.00 (84.70 to 85.70): VU0

Ion 151.00 (150.70 to 151.70): V



#12

1,1-Dichloroethene

Concen: 4.875 ug/L

RT: 2.61 min Scan# 394

Delta R.T. 0.00 min

Lab File: VU039037.D

Acq: 23 Jun 2020 13:43

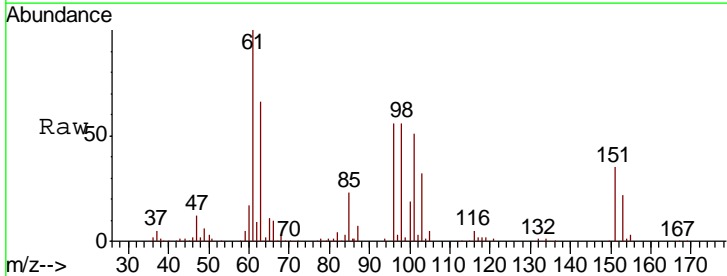
Tgt Ion: 96 Resp: 94956

Ion Ratio Lower Upper

96 100

61 178.7 125.1 232.3

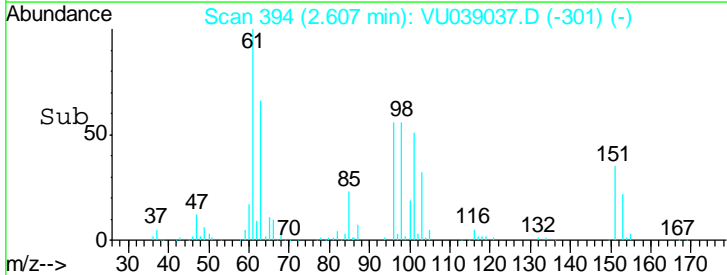
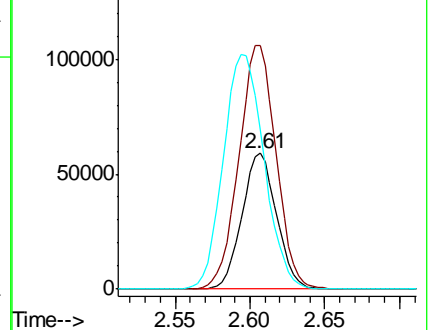
63 117.5 82.3 152.8

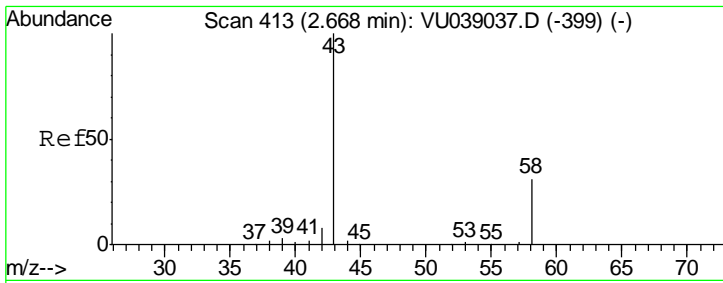


Abundance Ion 96.00 (95.70 to 96.70): VU0

Ion 61.05 (60.75 to 61.75): VU0

Ion 63.00 (62.70 to 63.70): VU0

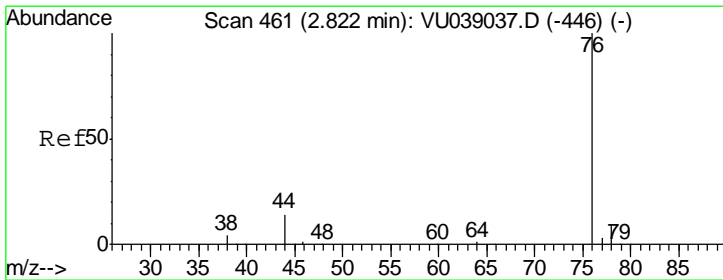
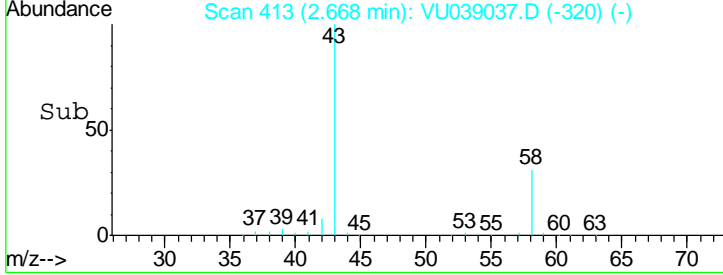
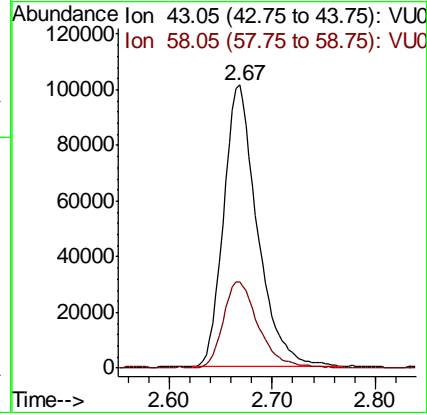
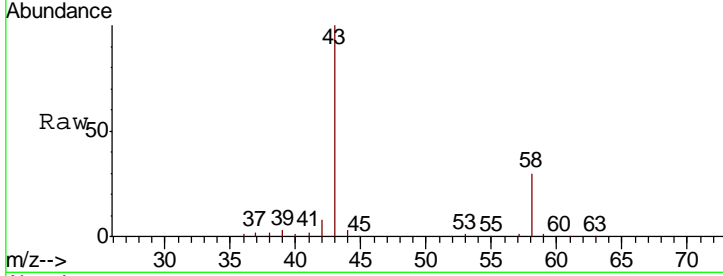




#13
 Acetone
 Concen: 45.700 ug/L
 RT: 2.67 min Scan# 413
 Delta R.T. 0.00 min
 Lab File: VU039037.D
 Acq: 23 Jun 2020 13:43

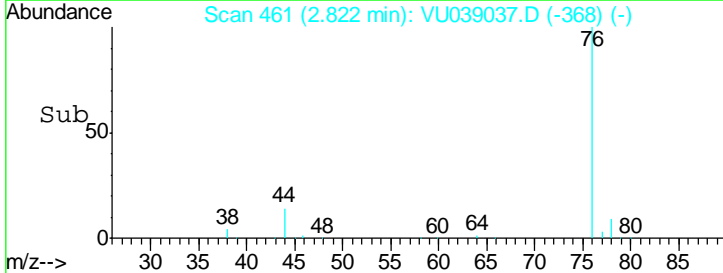
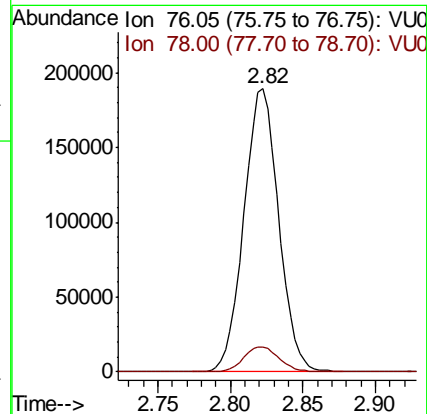
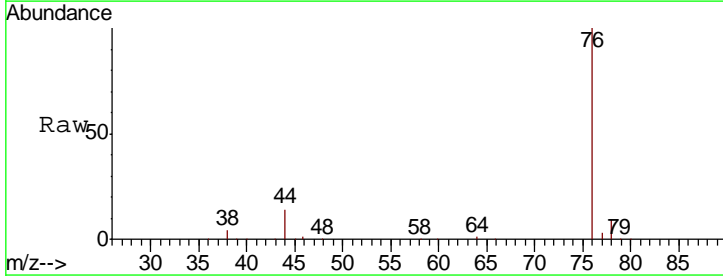
Instrument :
 MSVOA_U
ClientSampled :
 VSTD00503

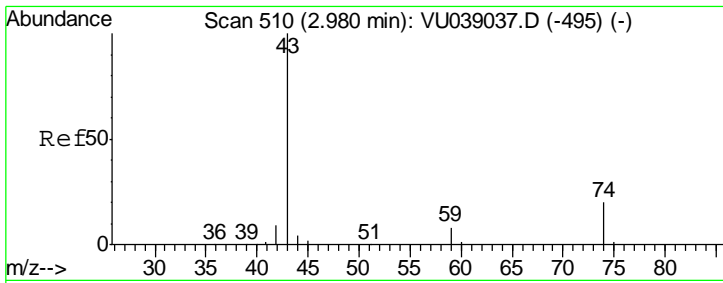
Tgt Ion	Resp	Lower	Upper
43	100		
58	32.2	0.0	64.4



#14
 Carbon disulfide
 Concen: 4.865 ug/L
 RT: 2.82 min Scan# 461
 Delta R.T. 0.00 min
 Lab File: VU039037.D
 Acq: 23 Jun 2020 13:43

Tgt Ion	Resp	Lower	Upper
76	100		
78	8.8	7.0	10.6

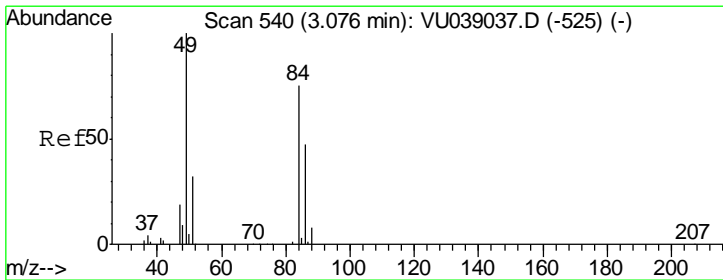
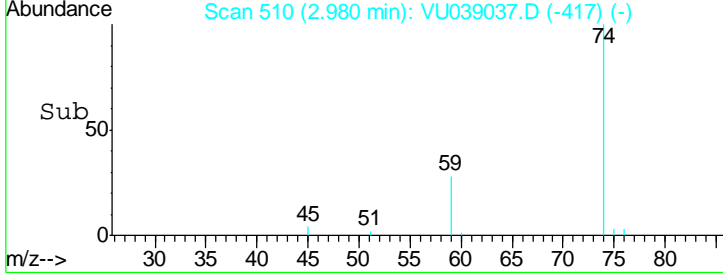
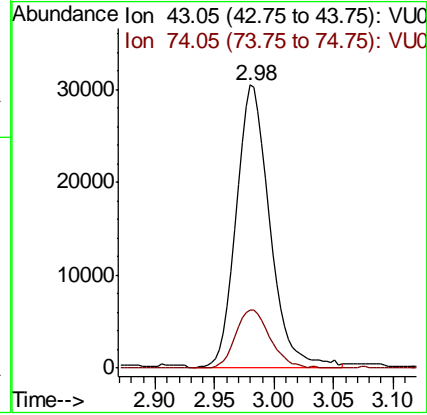
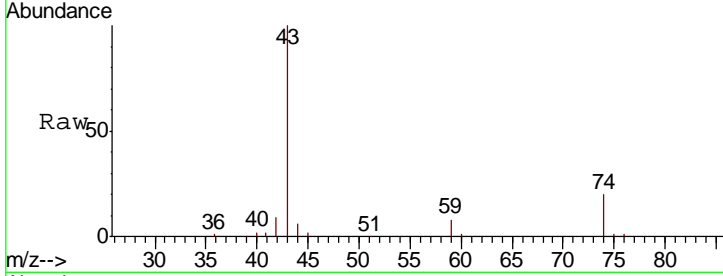




#15
 Methyl Acetate
 Concen: 5.014 ug/L
 RT: 2.98 min Scan# 510
 Delta R.T. 0.00 min
 Lab File: VU039037.D
 Acq: 23 Jun 2020 13:43

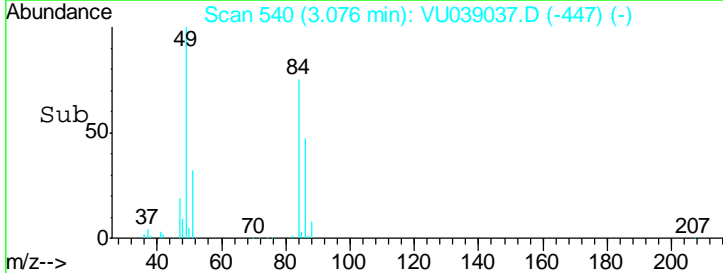
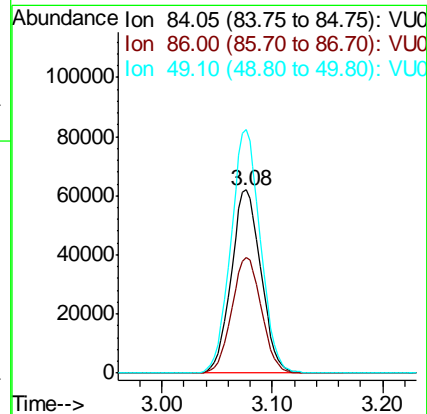
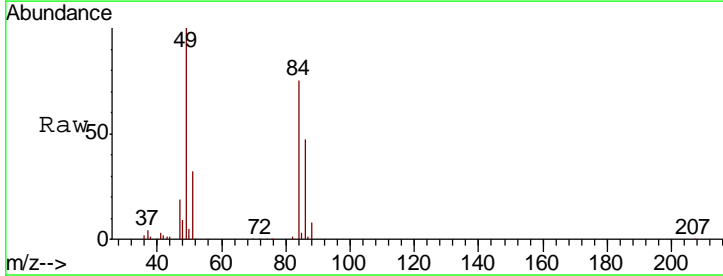
Instrument :
 MSVOA_U
ClientSampled :
 VSTD00503

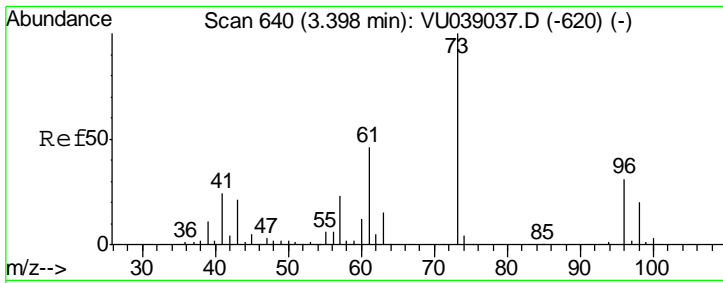
Tgt Ion	Resp	Lower	Upper
43	60098		
74	21.2	17.0	25.4



#16
 Methylene chloride
 Concen: 4.825 ug/L
 RT: 3.08 min Scan# 540
 Delta R.T. 0.00 min
 Lab File: VU039037.D
 Acq: 23 Jun 2020 13:43

Tgt Ion	Resp	Lower	Upper
84	115956		
86	63.0	44.1	81.9
49	133.0	93.1	172.9

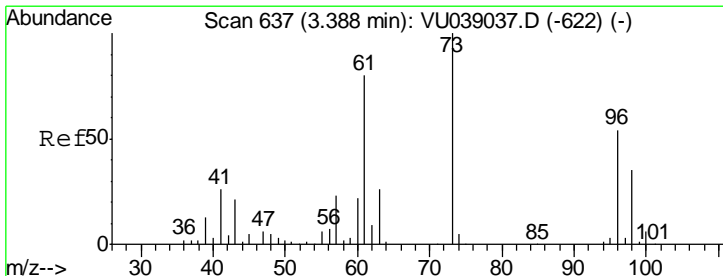
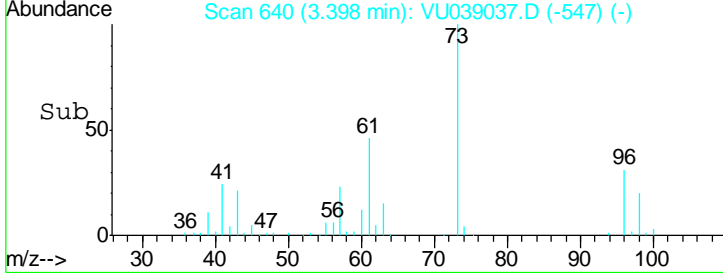
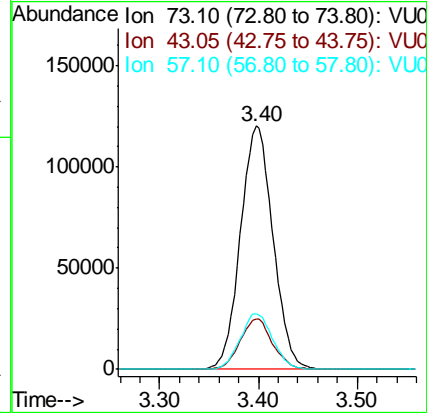
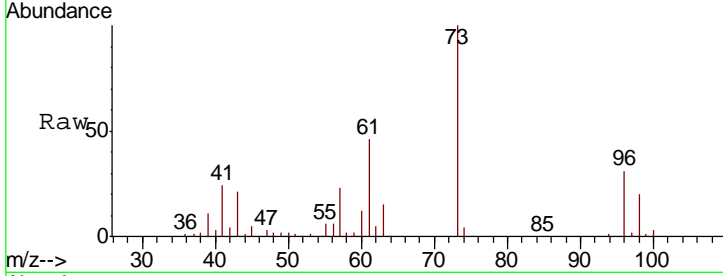




#17
 Methyl tert-butyl Ether
 Concen: 4.955 ug/L
 RT: 3.40 min Scan# 640
 Delta R.T. 0.00 min
 Lab File: VU039037.D
 Acq: 23 Jun 2020 13:43

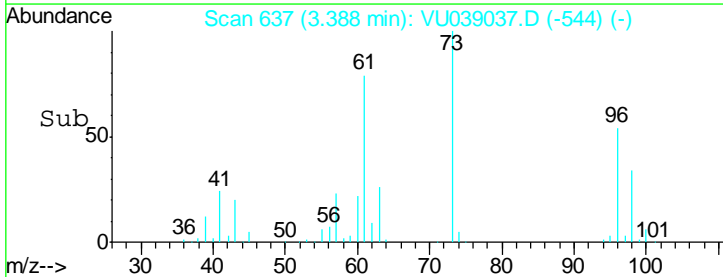
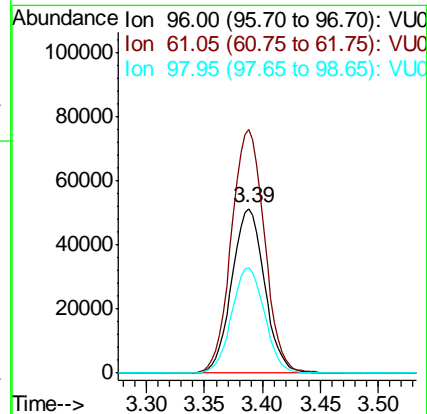
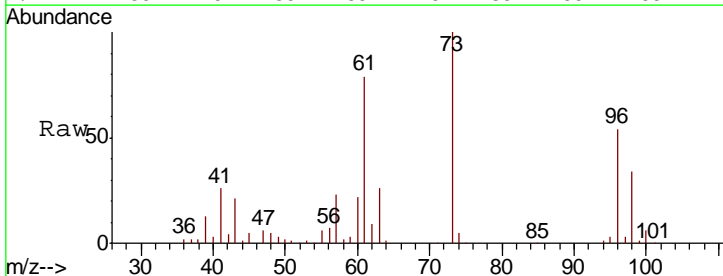
Instrument : MSVOA_U
 ClientSampled : VSTD00503

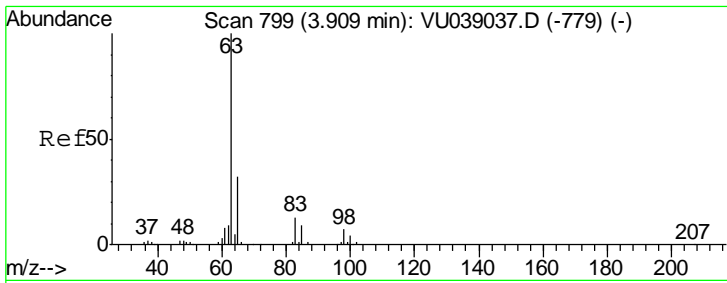
Tgt Ion	Resp	Lower	Upper
73	274726		
43	20.7	16.6	24.8
57	22.8	18.2	27.4



#18
 trans-1,2-Dichloroethene
 Concen: 4.828 ug/L
 RT: 3.39 min Scan# 637
 Delta R.T. 0.00 min
 Lab File: VU039037.D
 Acq: 23 Jun 2020 13:43

Tgt Ion	Resp	Lower	Upper
96	100619		
61	147.9	103.5	192.3
98	64.2	44.9	83.5

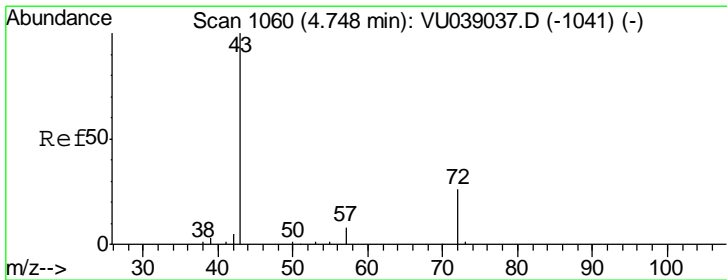
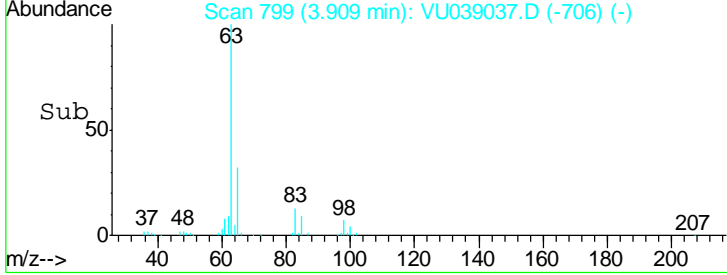
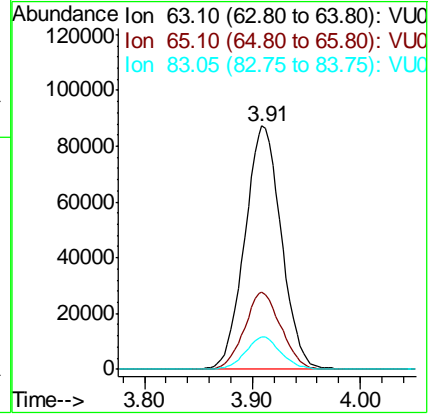
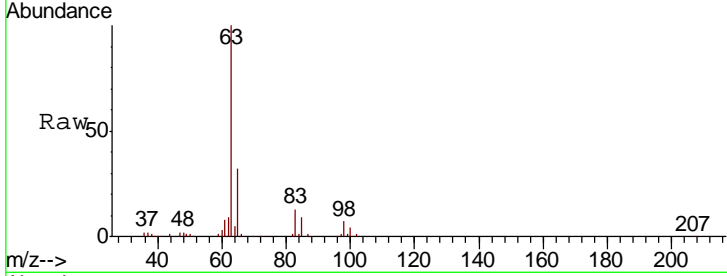




#19
 1,1-Dichloroethane
 Concen: 4.953 ug/L
 RT: 3.91 min Scan# 799
 Delta R.T. 0.00 min
 Lab File: VU039037.D
 Acq: 23 Jun 2020 13:43

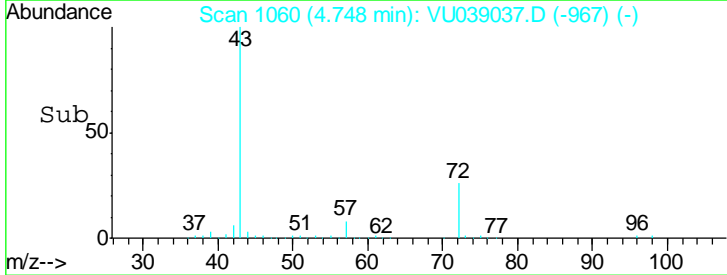
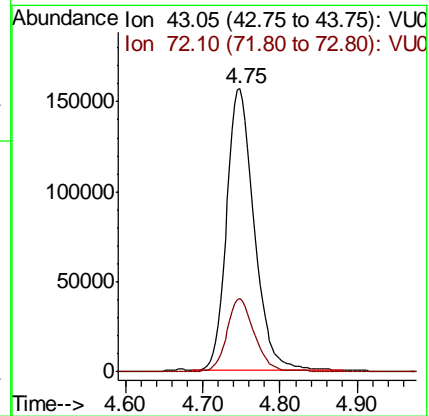
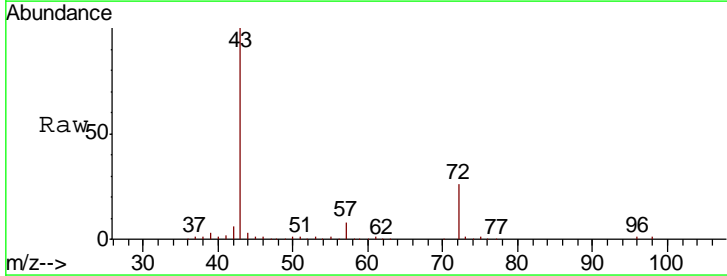
Instrument :
 MSVOA_U
 ClientSampleId :
 VSTD00503

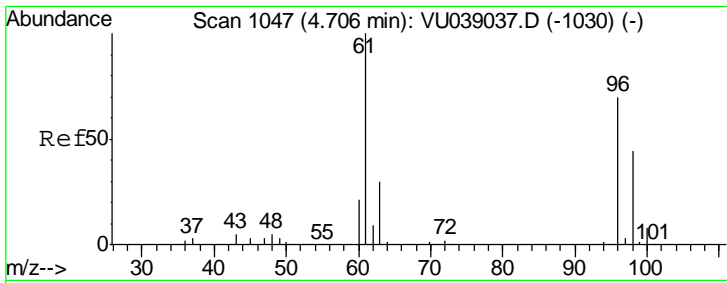
Tgt Ion	Resp	Lower	Upper
63	100		
65	31.6	22.1	41.1
83	13.3	9.3	17.3



#21
 2-Butanone
 Concen: 50.441 ug/L
 RT: 4.75 min Scan# 1060
 Delta R.T. 0.00 min
 Lab File: VU039037.D
 Acq: 23 Jun 2020 13:43

Tgt Ion	Resp	Lower	Upper
43	100		
72	26.2	13.1	39.3

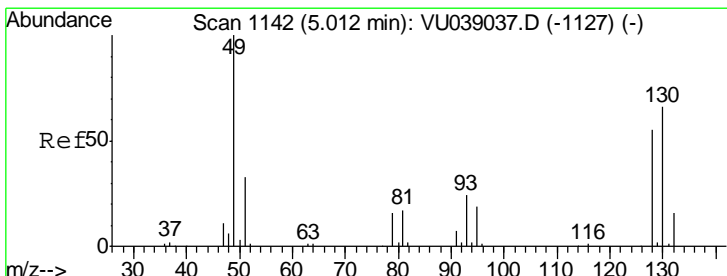
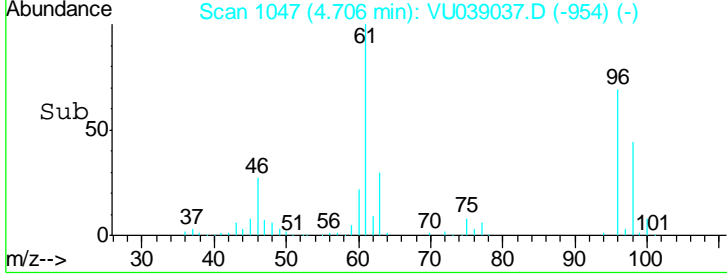
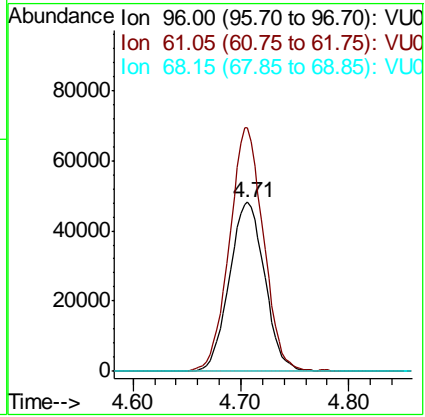
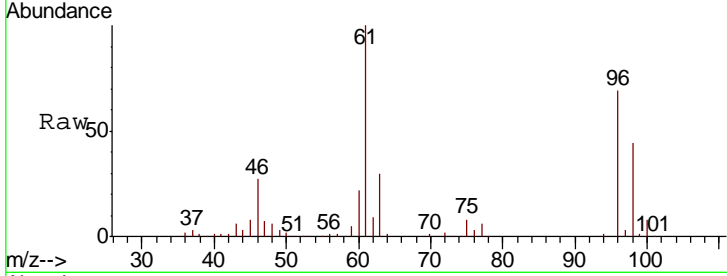




#22
 cis-1,2-Dichloroethene
 Concen: 4.878 ug/L
 RT: 4.71 min Scan# 1047
 Delta R.T. 0.00 min
 Lab File: VU039037.D
 Acq: 23 Jun 2020 13:43

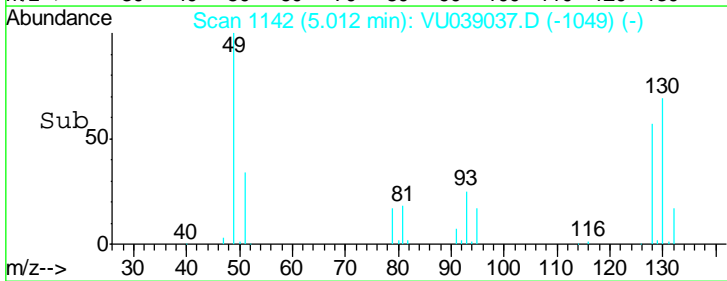
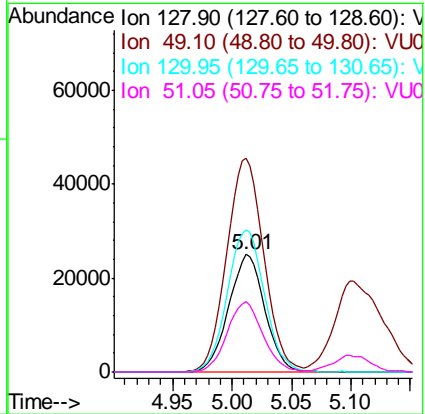
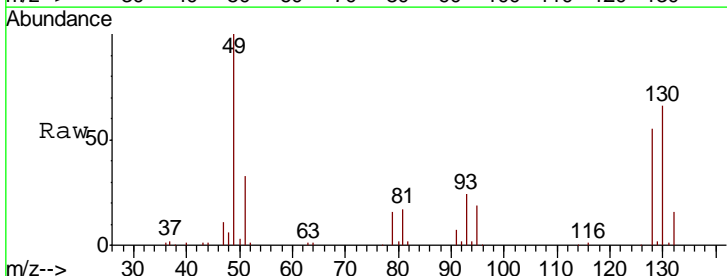
Instrument : MSVOA_U
 ClientSampled : VSTD00503

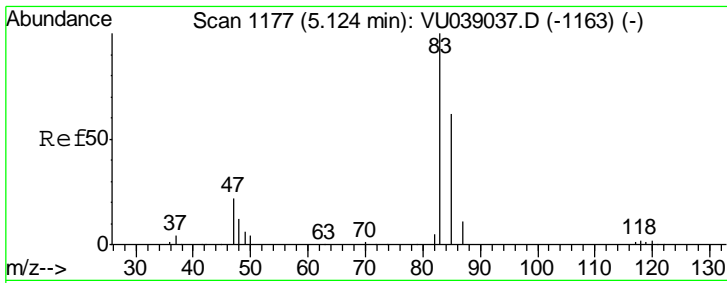
Tgt Ion	Resp	Lower	Upper
96	109703		
61	144.0	100.8	187.2
68	0.0	0.0	0.0



#23
 Bromochloromethane
 Concen: 5.093 ug/L
 RT: 5.01 min Scan# 1142
 Delta R.T. 0.00 min
 Lab File: VU039037.D
 Acq: 23 Jun 2020 13:43

Tgt Ion	Resp	Lower	Upper
128	52709		
49	181.9	127.3	236.5
130	120.5	84.4	156.7
51	59.4	47.5	71.3

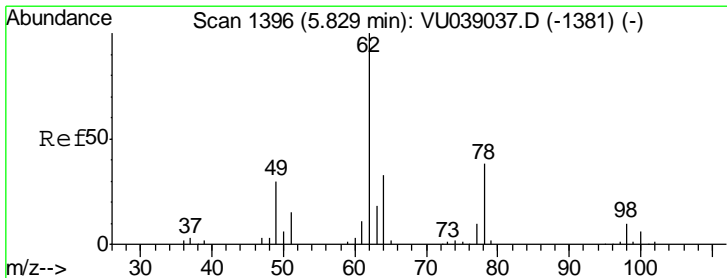
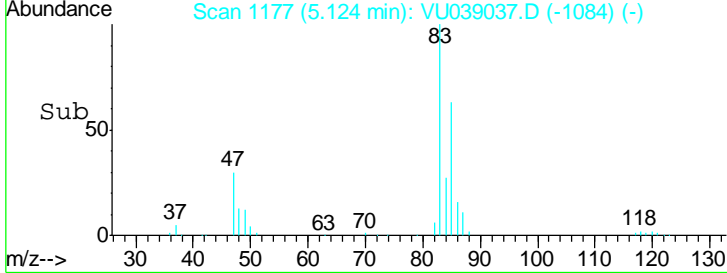
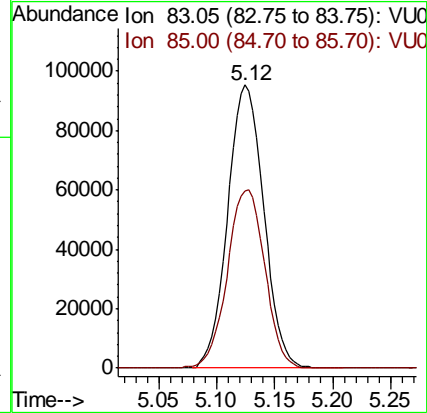
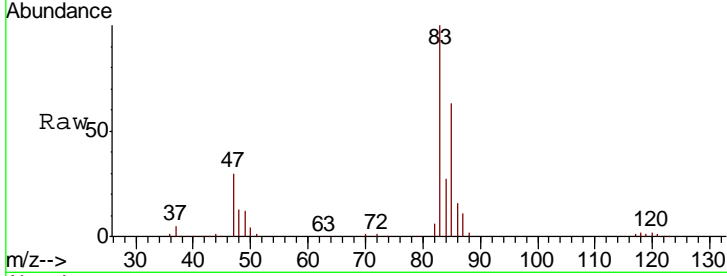




#25
 Chloroform
 Concen: 4.957 ug/L
 RT: 5.12 min Scan# 1177
 Delta R.T. 0.00 min
 Lab File: VU039037.D
 Acq: 23 Jun 2020 13:43

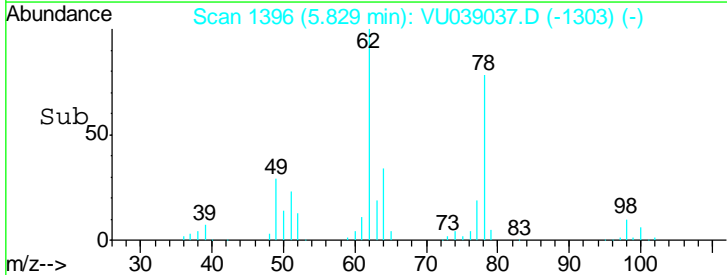
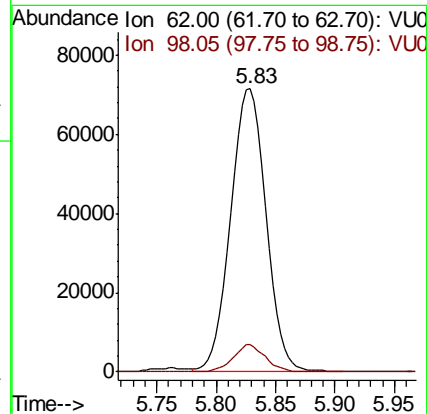
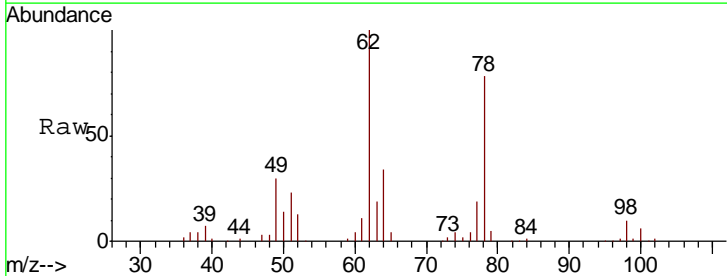
Instrument :
 MSVOA_U
ClientSampled :
 VSTD00503

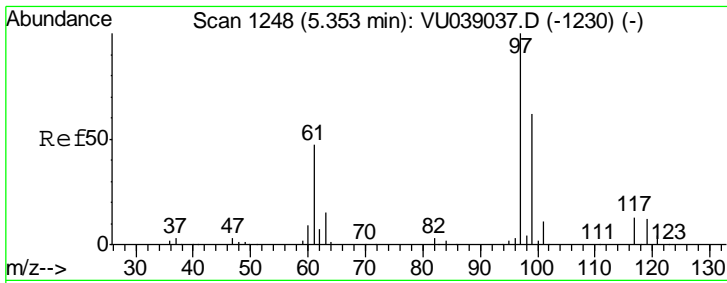
Tgt Ion	Resp	Lower	Upper
83	100		
85	62.6	43.8	81.4



#27
 1,2-Dichloroethane
 Concen: 4.966 ug/L
 RT: 5.83 min Scan# 1396
 Delta R.T. 0.00 min
 Lab File: VU039037.D
 Acq: 23 Jun 2020 13:43

Tgt Ion	Resp	Lower	Upper
62	100		
98	9.6	7.7	11.5

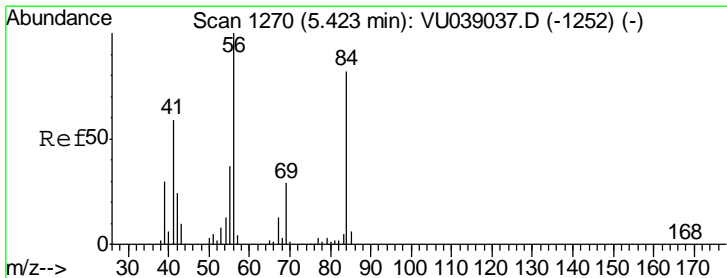
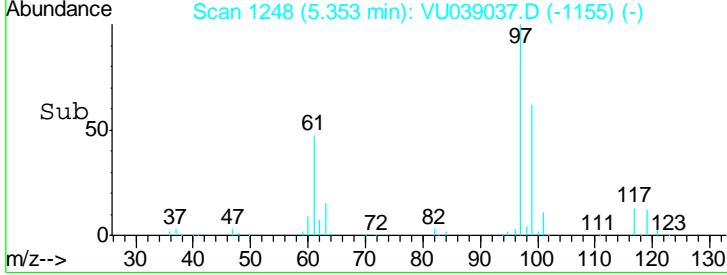
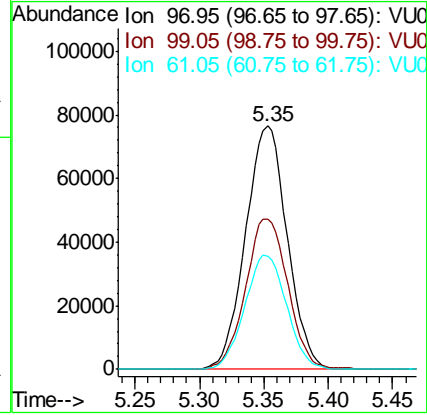
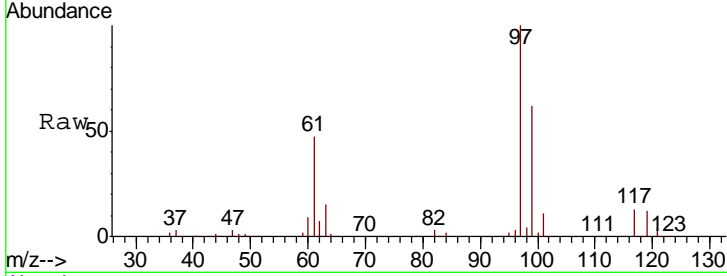




#29
 1,1,1-Trichloroethane
 Concen: 4.890 ug/L
 RT: 5.35 min Scan# 1248
 Delta R.T. 0.00 min
 Lab File: VU039037.D
 Acq: 23 Jun 2020 13:43

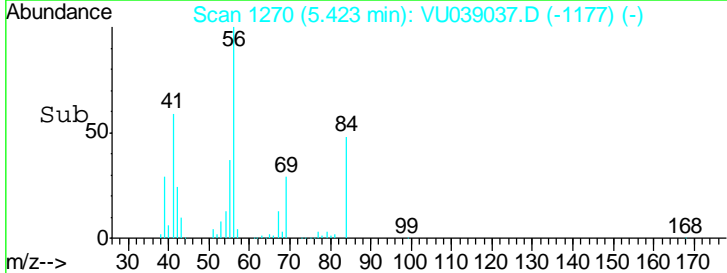
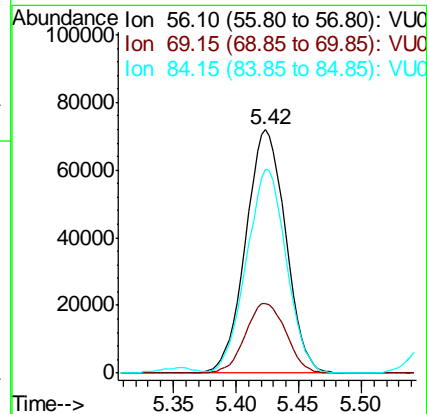
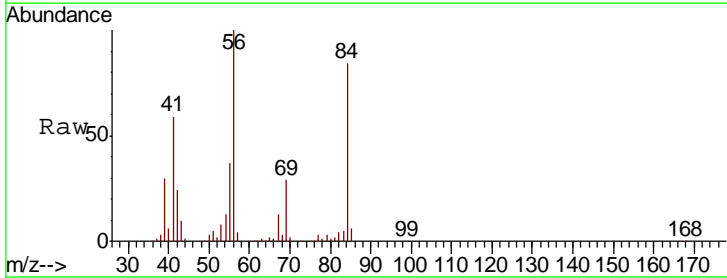
Instrument : MSVOA_U
 ClientSampled : VSTD00503

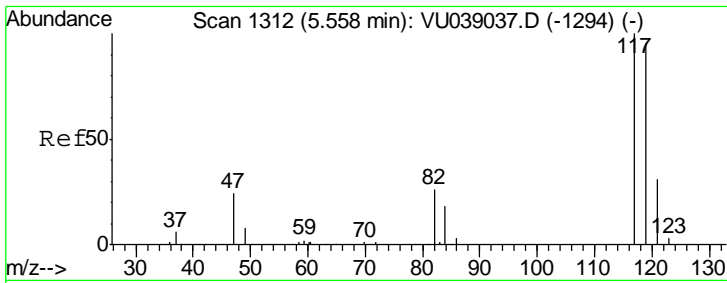
Tgt Ion	Resp	Lower	Upper
97	172092		
99	62.9	50.3	75.5
61	47.2	37.8	56.6



#30
 Cyclohexane
 Concen: 4.869 ug/L
 RT: 5.42 min Scan# 1270
 Delta R.T. 0.00 min
 Lab File: VU039037.D
 Acq: 23 Jun 2020 13:43

Tgt Ion	Resp	Lower	Upper
56	159411		
69	29.1	23.3	34.9
84	83.9	67.1	100.7

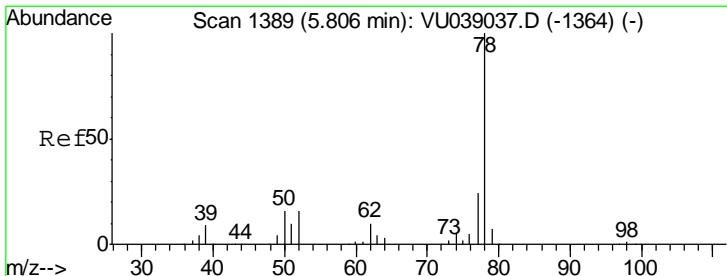
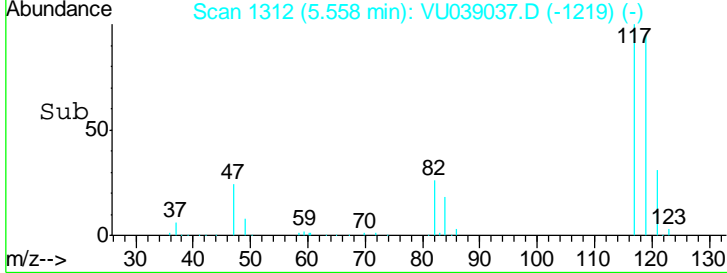
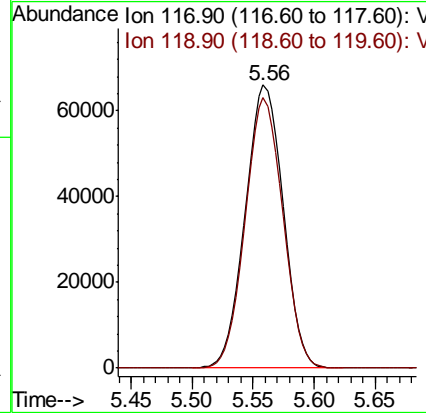
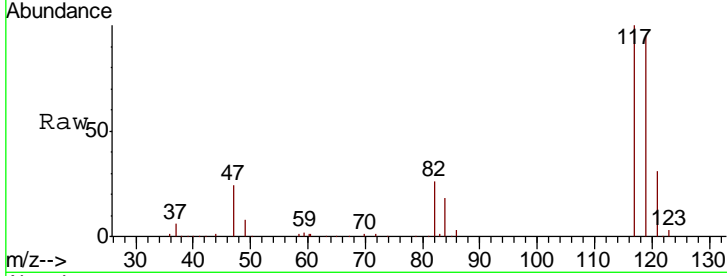




#31
 Carbon tetrachloride
 Concen: 4.841 ug/L
 RT: 5.56 min Scan# 1312
 Delta R.T. 0.00 min
 Lab File: VU039037.D
 Acq: 23 Jun 2020 13:43

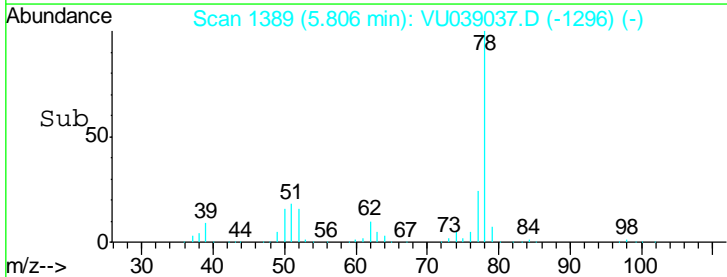
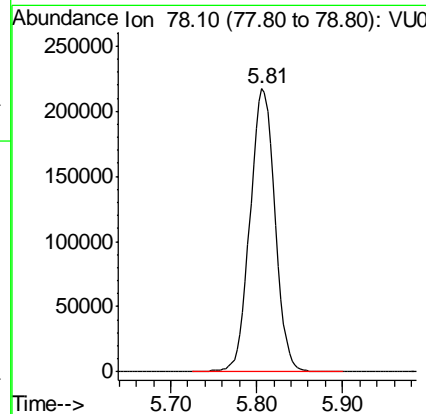
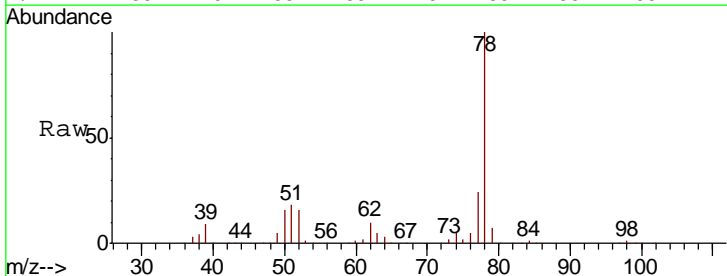
Instrument : MSVOA_U
 ClientSampled : VSTD00503

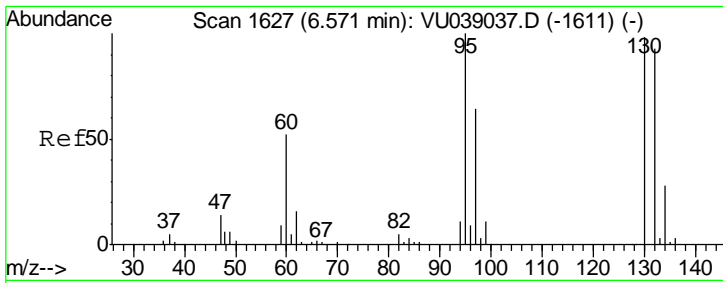
Tgt Ion: 117 Resp: 141860
 Ion Ratio Lower Upper
 117 100
 119 94.6 75.7 113.5



#33
 Benzene
 Concen: 4.955 ug/L
 RT: 5.81 min Scan# 1389
 Delta R.T. 0.00 min
 Lab File: VU039037.D
 Acq: 23 Jun 2020 13:43

Tgt Ion: 78 Resp: 439016

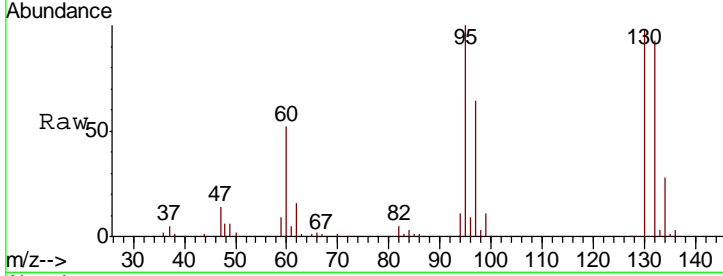




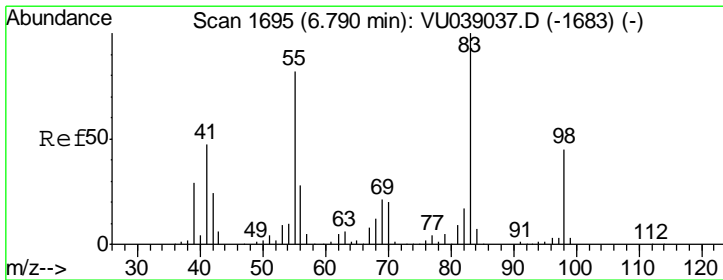
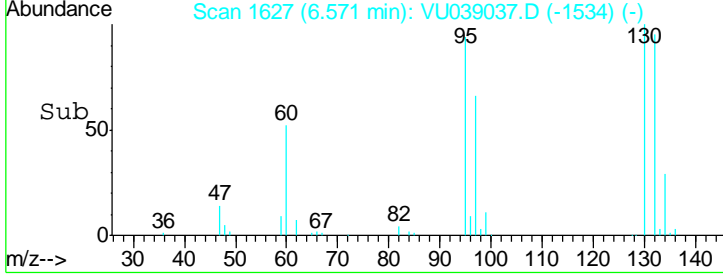
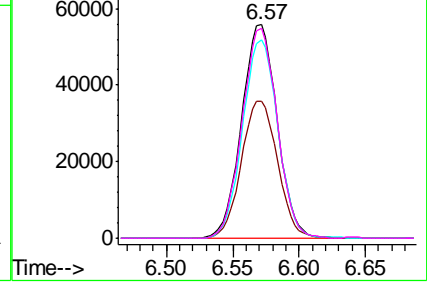
#34
 Trichloroethene
 Concen: 4.861 ug/L
 RT: 6.57 min Scan# 1627
 Delta R.T. 0.00 min
 Lab File: VU039037.D
 Acq: 23 Jun 2020 13:43

Instrument : MSVOA_U
 ClientSampled : VSTD00503

Tgt Ion	Resp	Lower	Upper
95	104170		
97	64.4	45.1	83.7
132	93.0	65.1	120.9
130	98.0	68.6	127.4

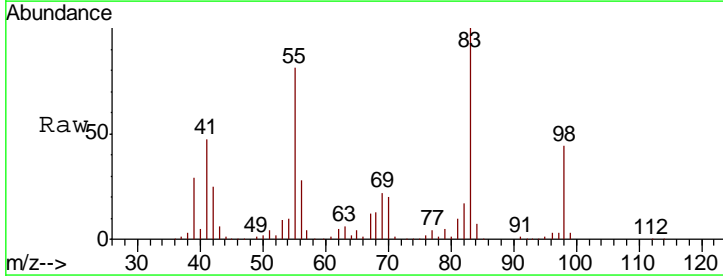


Abundance Ion 95.00 (94.70 to 95.70): VU0
 Ion 96.95 (96.65 to 97.65): VU0
 Ion 131.95 (131.65 to 132.65): V
 Ion 129.95 (129.65 to 130.65): V

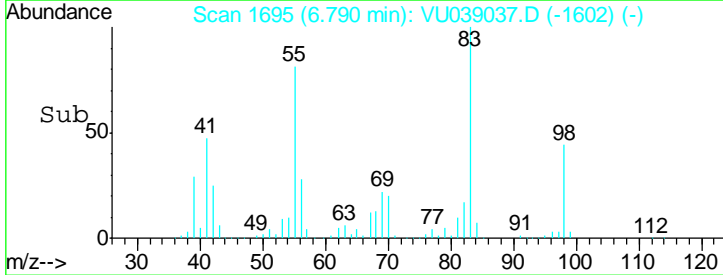
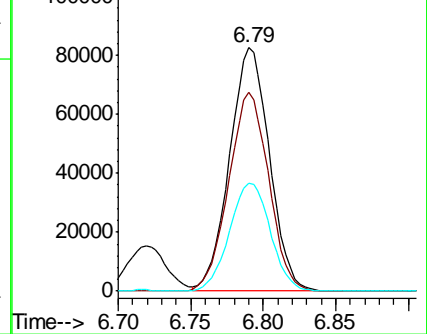


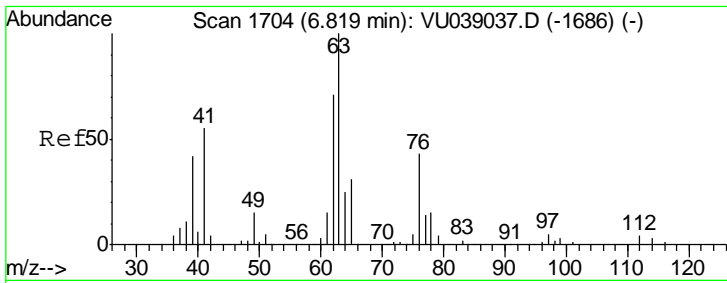
#35
 Methylcyclohexane
 Concen: 4.961 ug/L
 RT: 6.79 min Scan# 1695
 Delta R.T. 0.00 min
 Lab File: VU039037.D
 Acq: 23 Jun 2020 13:43

Tgt Ion	Resp	Lower	Upper
83	157738		
55	81.9	65.5	98.3
98	45.6	36.5	54.7



Abundance Ion 83.15 (82.85 to 83.85): VU0
 Ion 55.10 (54.80 to 55.80): VU0
 Ion 98.15 (97.85 to 98.85): VU0

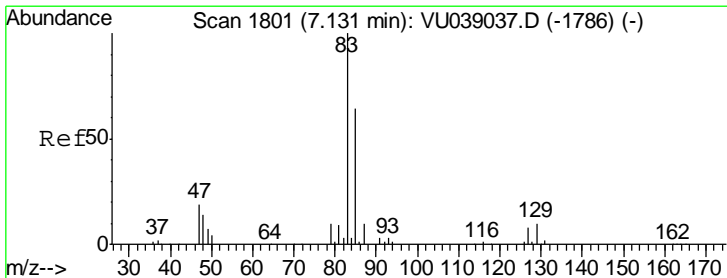
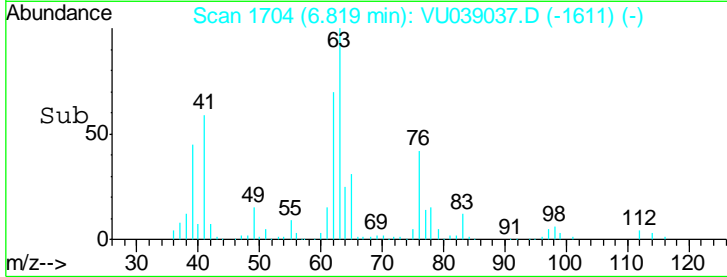
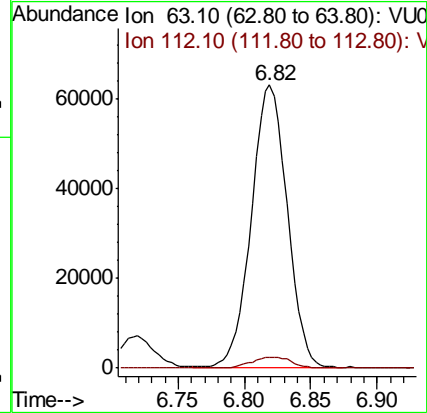
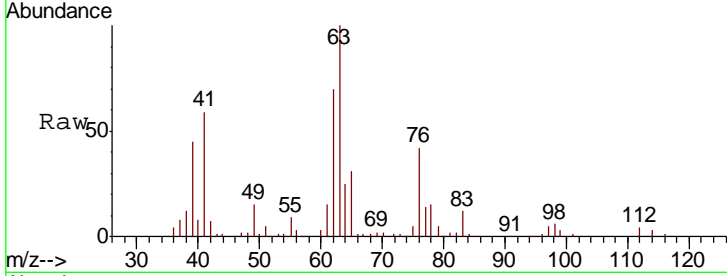




#37
 1,2-Dichloropropane
 Concen: 4.964 ug/L
 RT: 6.82 min Scan# 1704
 Delta R.T. 0.00 min
 Lab File: VU039037.D
 Acq: 23 Jun 2020 13:43

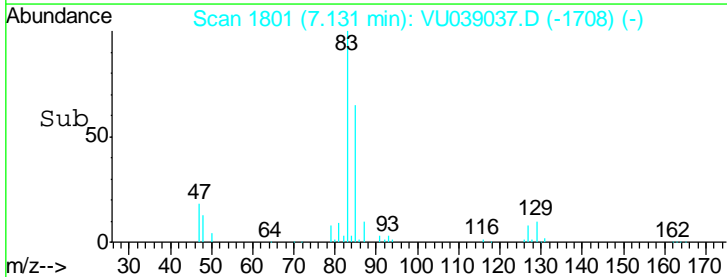
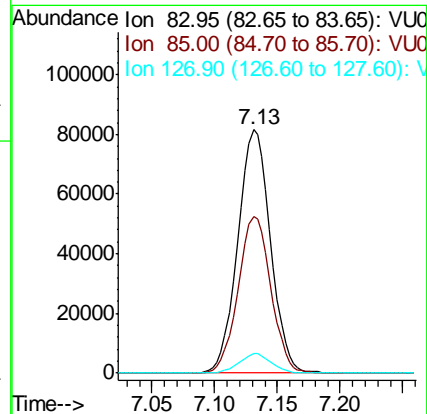
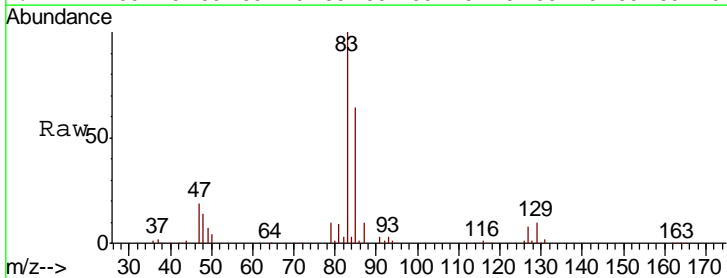
Instrument :
 MSVOA_U
 ClientSampled :
 VSTD00503

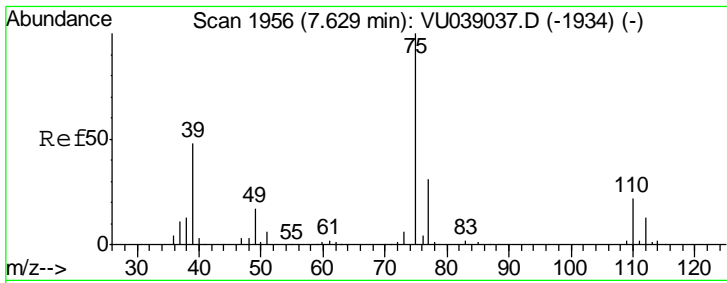
Tgt Ion: 63 Resp: 119147
 Ion Ratio Lower Upper
 63 100
 112 4.3 3.4 5.2



#38
 Bromodichloromethane
 Concen: 4.930 ug/L
 RT: 7.13 min Scan# 1801
 Delta R.T. 0.00 min
 Lab File: VU039037.D
 Acq: 23 Jun 2020 13:43

Tgt Ion: 83 Resp: 147538
 Ion Ratio Lower Upper
 83 100
 85 64.1 44.9 83.3
 127 7.9 6.3 9.5

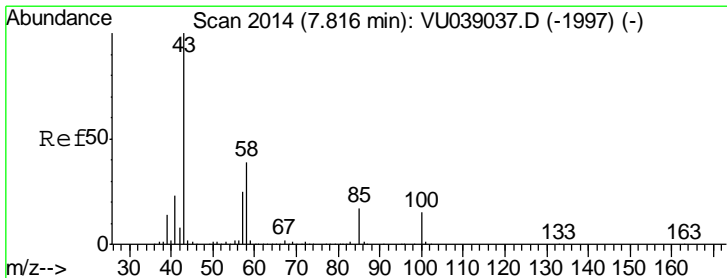
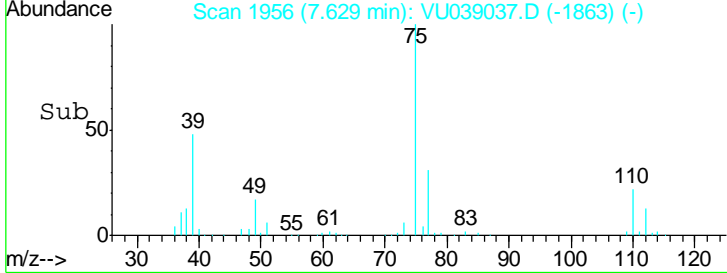
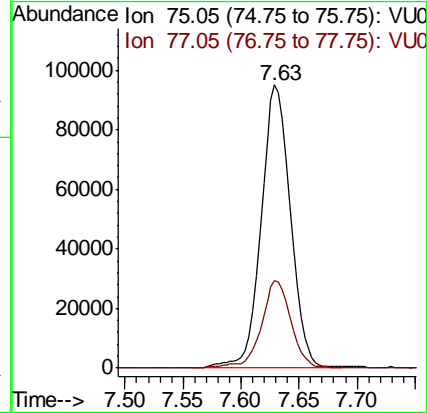
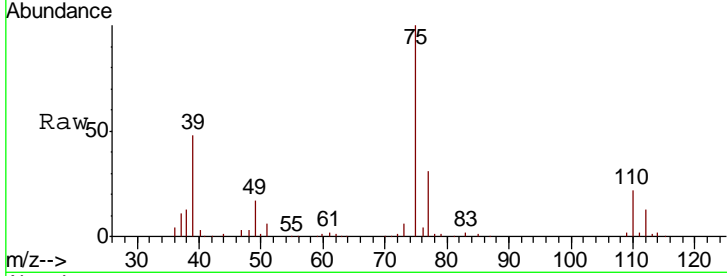




#39
 cis-1,3-Dichloropropene
 Concen: 5.047 ug/L
 RT: 7.63 min Scan# 1956
 Delta R.T. 0.00 min
 Lab File: VU039037.D
 Acq: 23 Jun 2020 13:43

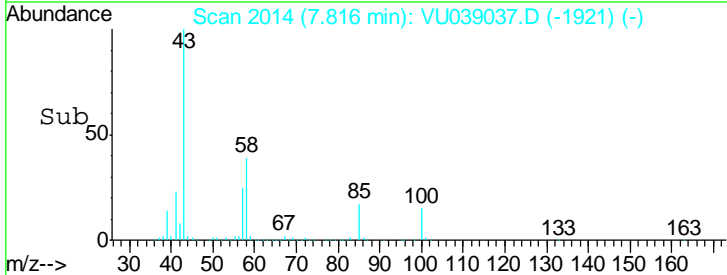
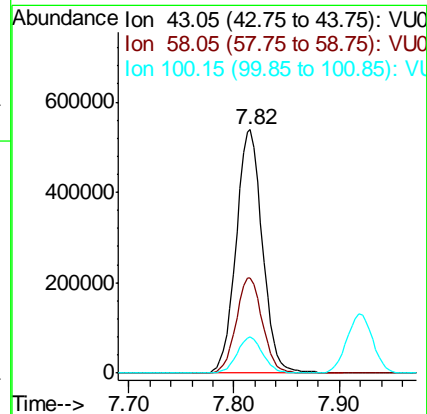
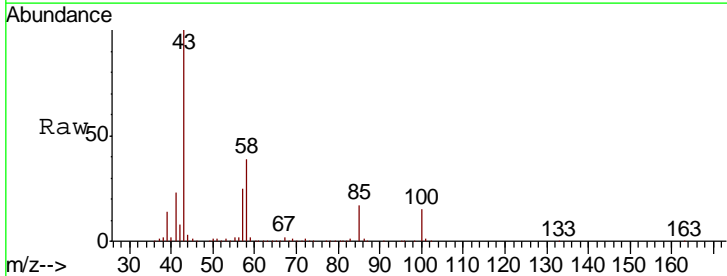
Instrument :
 MSVOA_U
ClientSampled :
 VSTD00503

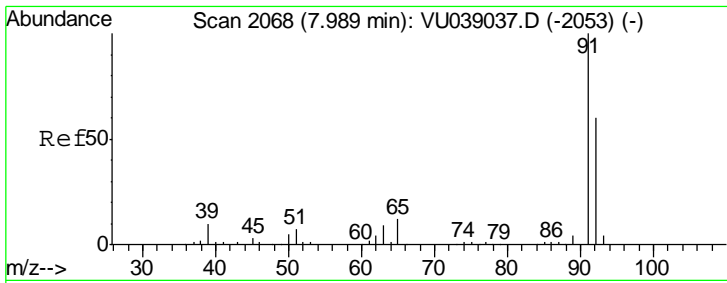
Tgt Ion	Resp	Lower	Upper
75	167919		
77	30.8	21.6	40.0



#40
 4-Methyl-2-pentanone
 Concen: 51.790 ug/L
 RT: 7.82 min Scan# 2014
 Delta R.T. 0.00 min
 Lab File: VU039037.D
 Acq: 23 Jun 2020 13:43

Tgt Ion	Resp	Lower	Upper
43	927806		
58	39.1	31.3	46.9
100	14.5	11.6	17.4

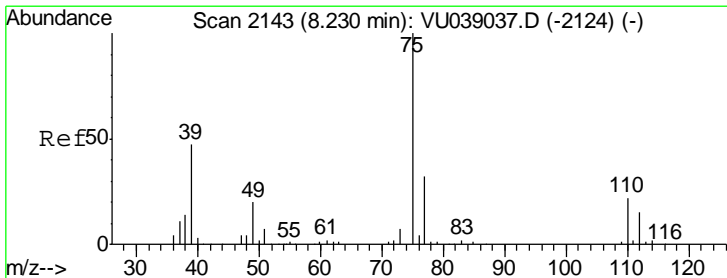
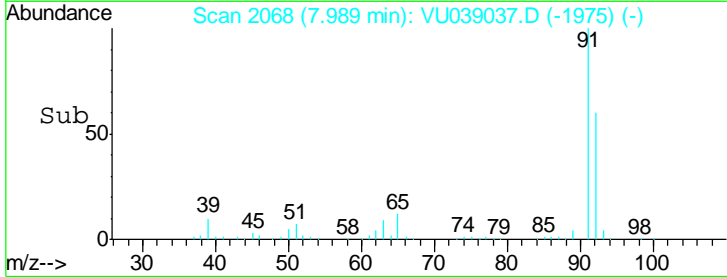
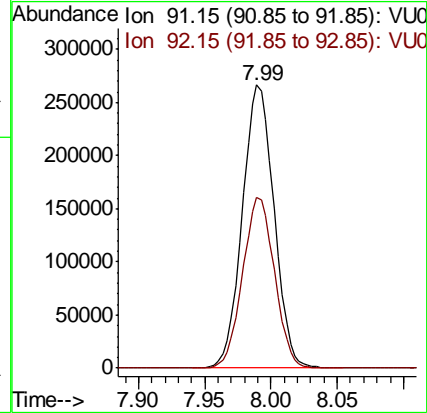
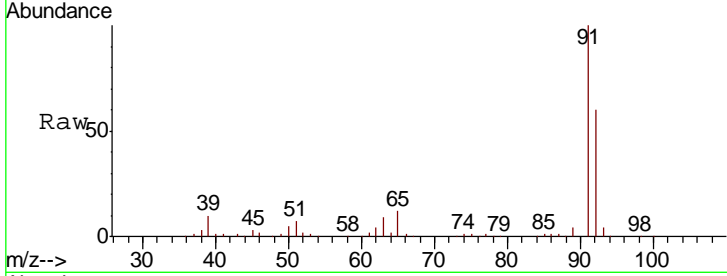




#42
 Toluene
 Concen: 5.040 ug/L
 RT: 7.99 min Scan# 2068
 Delta R.T. 0.00 min
 Lab File: VU039037.D
 Acq: 23 Jun 2020 13:43

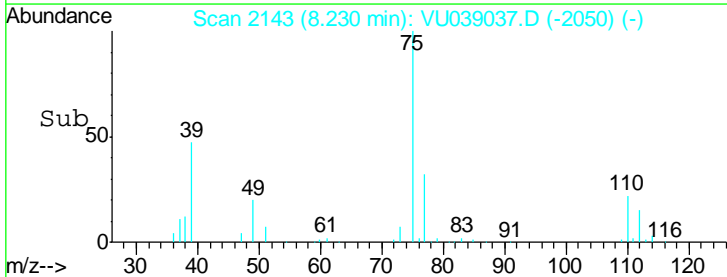
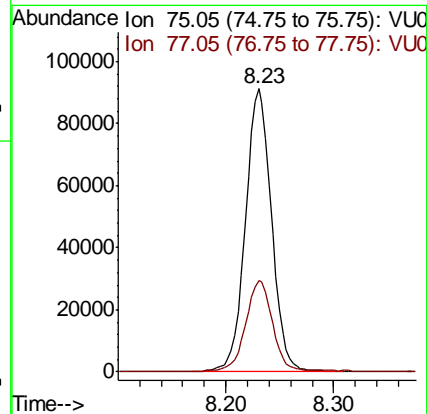
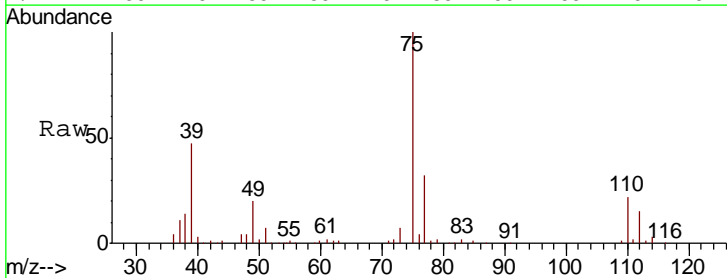
Instrument :
 MSVOA_U
 ClientSampled :
 VSTD00503

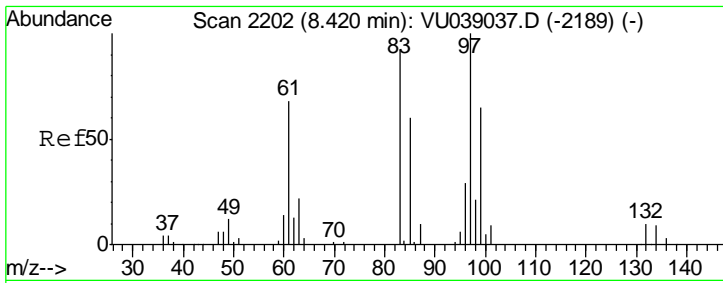
Tgt Ion: 91 Resp: 443249
 Ion Ratio Lower Upper
 91 100
 92 60.1 42.1 78.1



#44
 trans-1,3-Dichloropropene
 Concen: 4.945 ug/L
 RT: 8.23 min Scan# 2143
 Delta R.T. 0.00 min
 Lab File: VU039037.D
 Acq: 23 Jun 2020 13:43

Tgt Ion: 75 Resp: 153938
 Ion Ratio Lower Upper
 75 100
 77 32.3 22.6 42.0

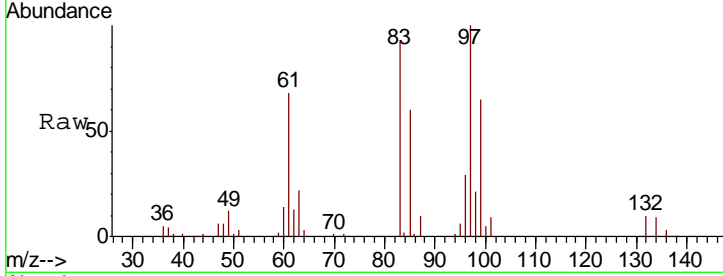




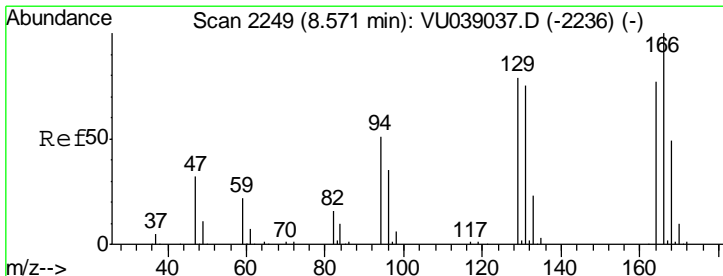
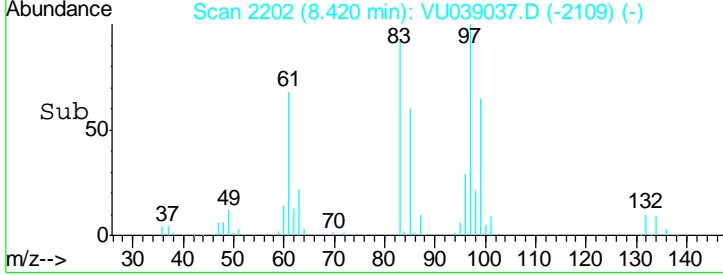
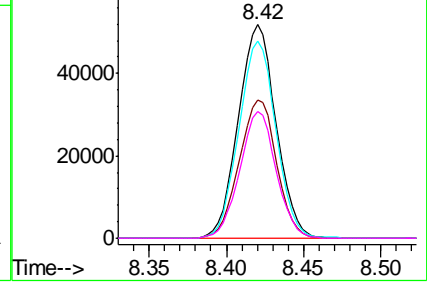
#45
 1,1,2-Trichloroethane
 Concen: 4.915 ug/L
 RT: 8.42 min Scan# 2202
 Delta R.T. 0.00 min
 Lab File: VU039037.D
 Acq: 23 Jun 2020 13:43

Instrument :
 MSVOA_U
 ClientSampled :
 VSTD00503

Tgt Ion	Resp	Lower	Upper
97	100		
99	64.9	45.4	84.4
83	92.0	64.4	119.6
85	59.6	41.7	77.5

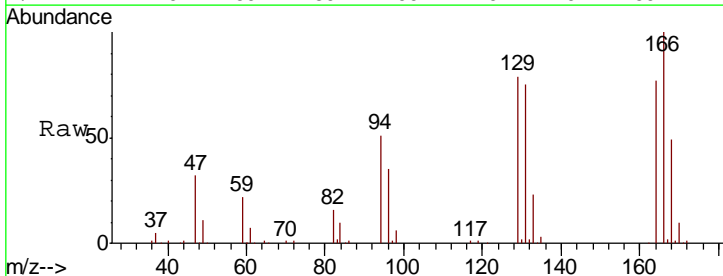


Abundance Ion 96.95 (96.65 to 97.65): VU039037.D (-2189) (-)
 Ion 99.05 (98.75 to 99.75): VU039037.D (-2189) (-)
 Ion 82.95 (82.65 to 83.65): VU039037.D (-2189) (-)
 Ion 85.00 (84.70 to 85.70): VU039037.D (-2189) (-)

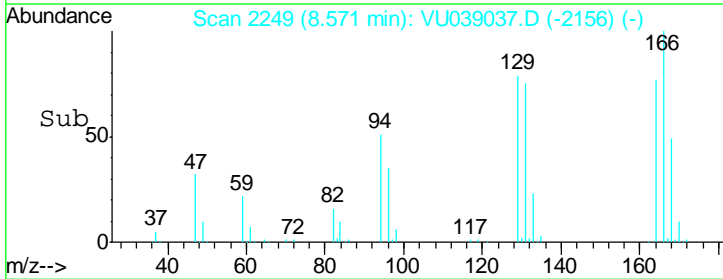
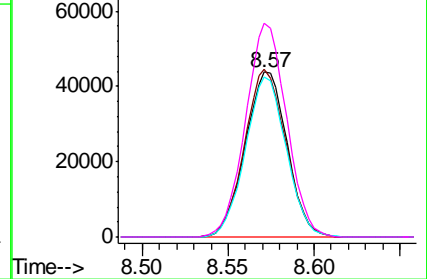


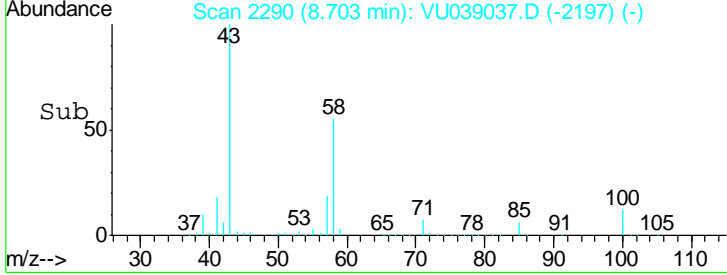
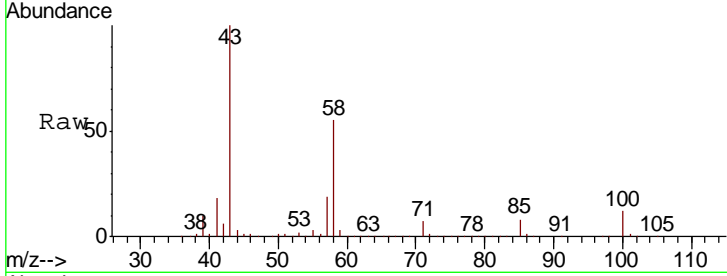
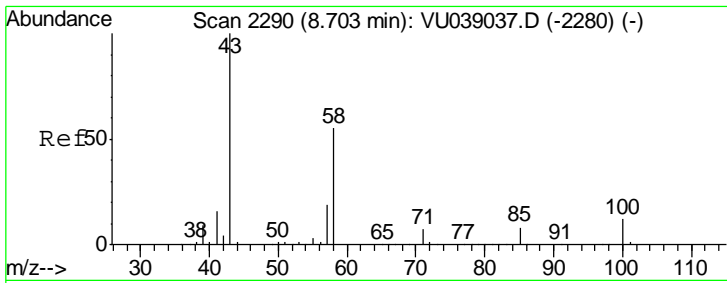
#47
 Tetrachloroethene
 Concen: 4.787 ug/L
 RT: 8.57 min Scan# 2249
 Delta R.T. 0.00 min
 Lab File: VU039037.D
 Acq: 23 Jun 2020 13:43

Tgt Ion	Resp	Lower	Upper
164	100		
129	101.9	71.3	132.5
131	97.5	68.3	126.8
166	129.7	90.8	168.6



Abundance Ion 163.90 (163.60 to 164.60): VU039037.D (-2156) (-)
 Ion 128.95 (128.65 to 129.65): VU039037.D (-2156) (-)
 Ion 130.95 (130.65 to 131.65): VU039037.D (-2156) (-)
 Ion 165.90 (165.60 to 166.60): VU039037.D (-2156) (-)



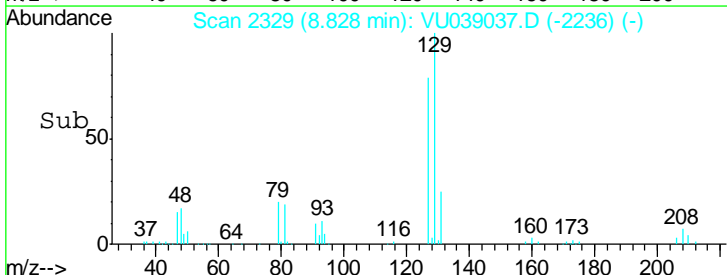
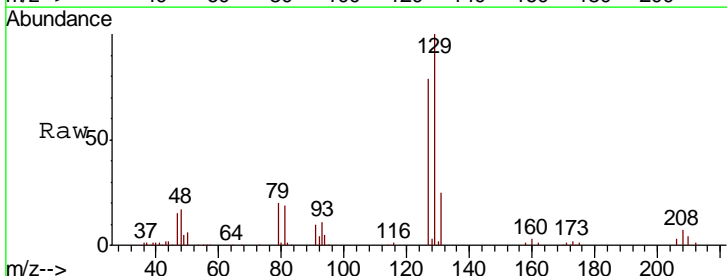
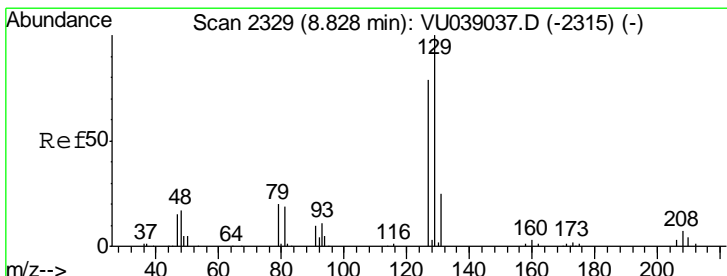
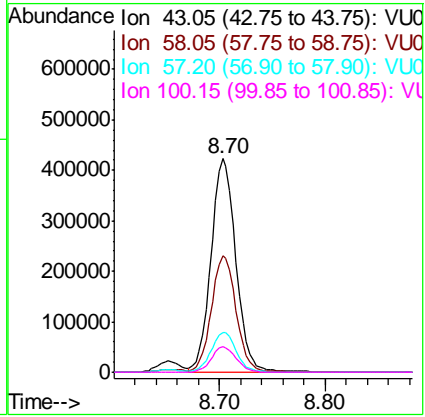


#48
 2-Hexanone
 Concen: 52.596 ug/L
 RT: 8.70 min Scan# 2290
 Delta R.T. 0.00 min
 Lab File: VU039037.D
 Acq: 23 Jun 2020 13:43

Instrument :
 MSVOA_U
 ClientSampled :
 VSTD00503

Tot Ion: 43 Resp: 690761

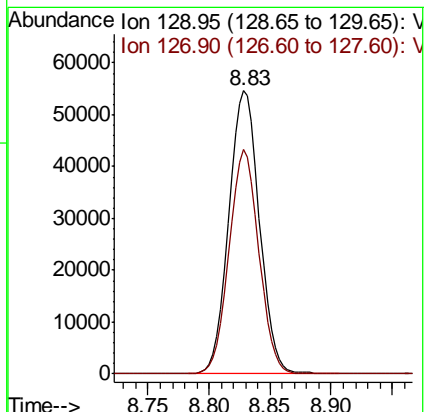
Ion	Ratio	Lower	Upper
43	100		
58	55.0	44.0	66.0
57	18.8	15.0	22.6
100	11.8	9.4	14.2

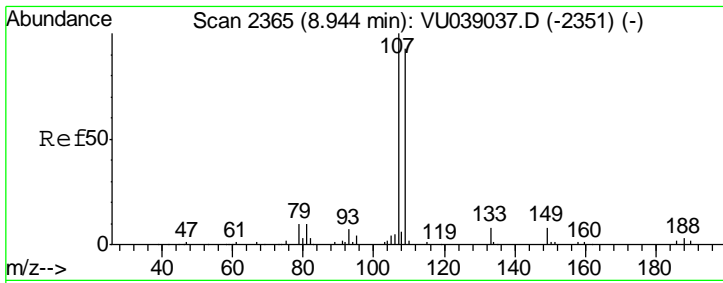


#49
 Dibromochloromethane
 Concen: 4.935 ug/L
 RT: 8.83 min Scan# 2329
 Delta R.T. 0.00 min
 Lab File: VU039037.D
 Acq: 23 Jun 2020 13:43

Tgt Ion: 129 Resp: 95731

Ion	Ratio	Lower	Upper
129	100		
127	79.2	55.4	103.0

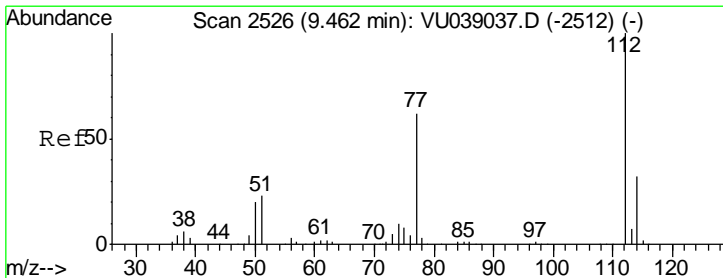
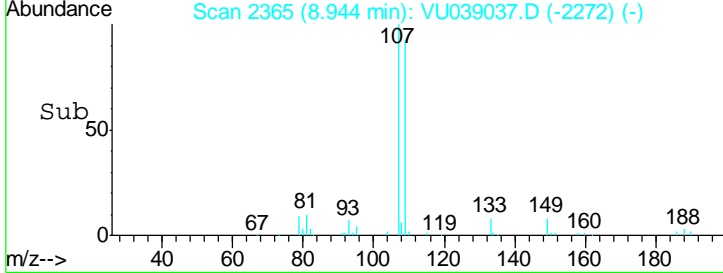
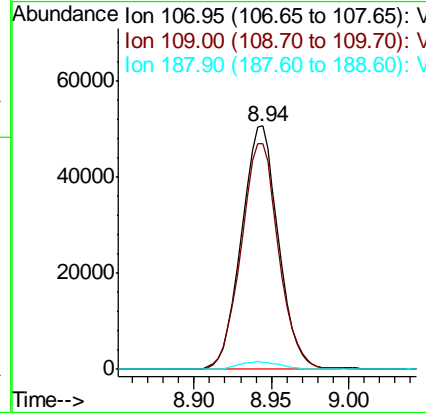
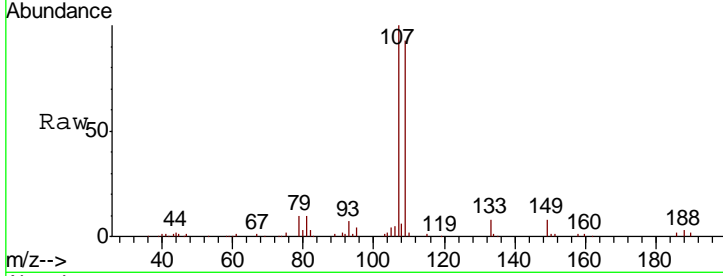




#50
 1,2-Dibromoethane
 Concen: 4.984 ug/L
 RT: 8.94 min Scan# 2365
 Delta R.T. 0.00 min
 Lab File: VU039037.D
 Acq: 23 Jun 2020 13:43

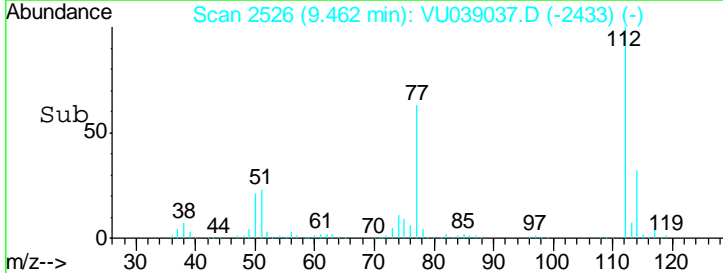
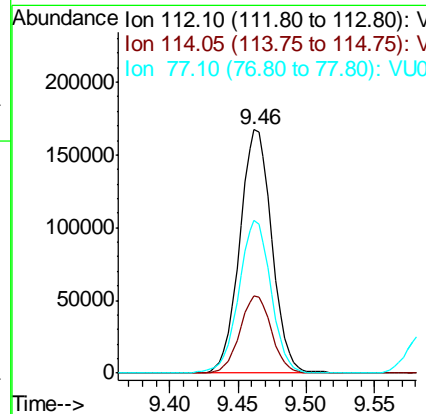
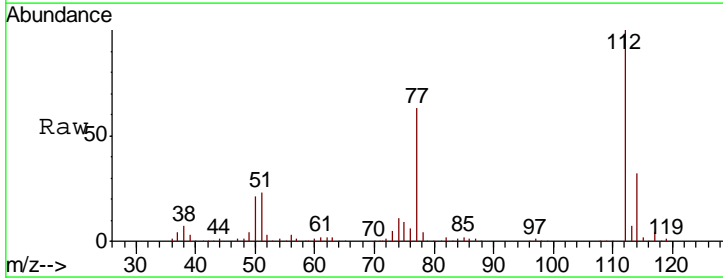
Instrument :
 MSVOA_U
 ClientSampled :
 VSTD00503

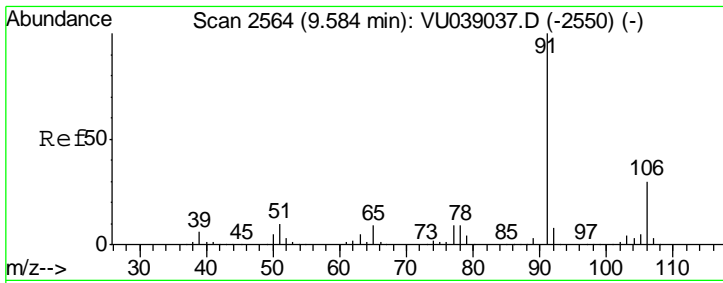
Tgt Ion	Resp	Lower	Upper
107	84070		
109	92.6	64.8	120.4
188	3.0	2.4	3.6



#51
 Chlorobenzene
 Concen: 4.933 ug/L
 RT: 9.46 min Scan# 2526
 Delta R.T. 0.00 min
 Lab File: VU039037.D
 Acq: 23 Jun 2020 13:43

Tgt Ion	Resp	Lower	Upper
112	273069		
114	31.5	22.0	41.0
77	62.8	50.2	75.4

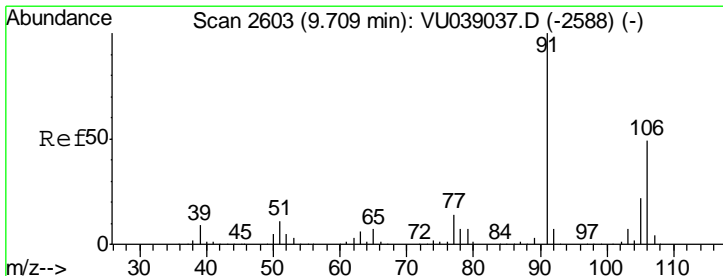
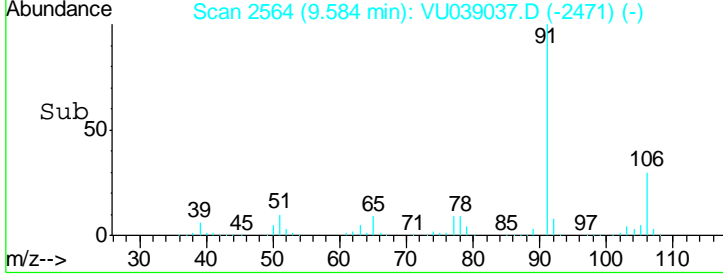
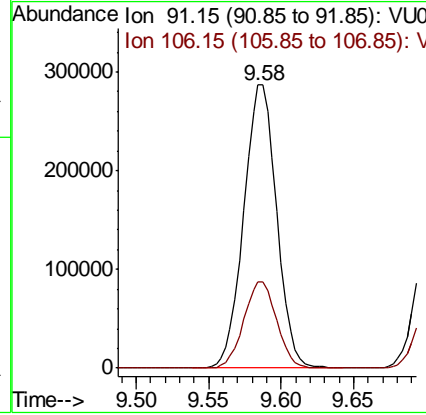
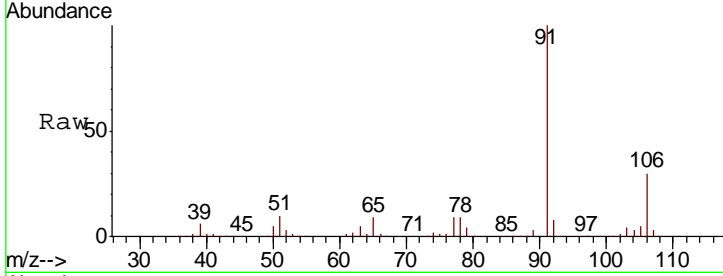




#52
 Ethylbenzene
 Concen: 4.903 ug/L
 RT: 9.58 min Scan# 2564
 Delta R.T. 0.00 min
 Lab File: VU039037.D
 Acq: 23 Jun 2020 13:43

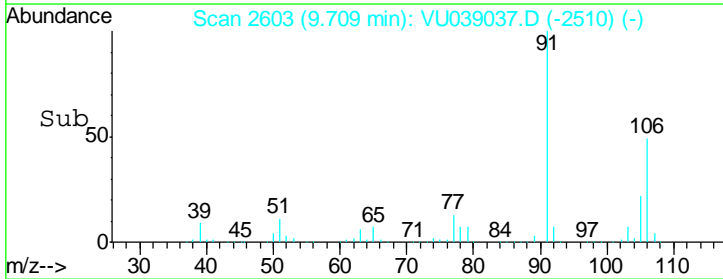
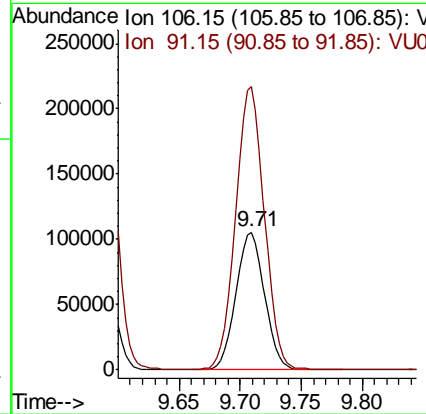
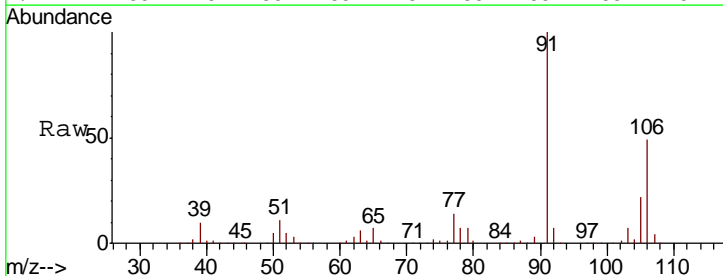
Instrument :
 MSVOA_U
 ClientSampled :
 VSTD00503

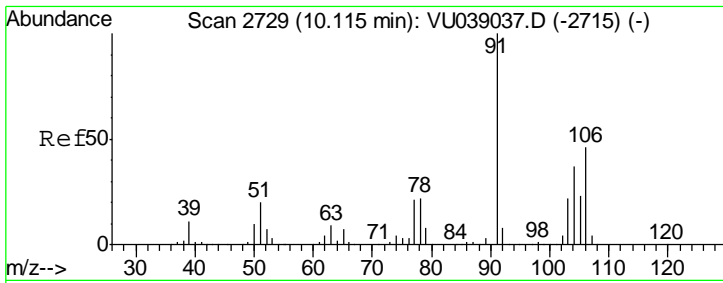
Tgt Ion: 91 Resp: 453188
 Ion Ratio Lower Upper
 91 100
 106 30.5 21.3 39.6



#53
 m,p-Xylene
 Concen: 5.054 ug/L
 RT: 9.71 min Scan# 2603
 Delta R.T. 0.00 min
 Lab File: VU039037.D
 Acq: 23 Jun 2020 13:43

Tgt Ion: 106 Resp: 171799
 Ion Ratio Lower Upper
 106 100
 91 205.2 143.6 266.8

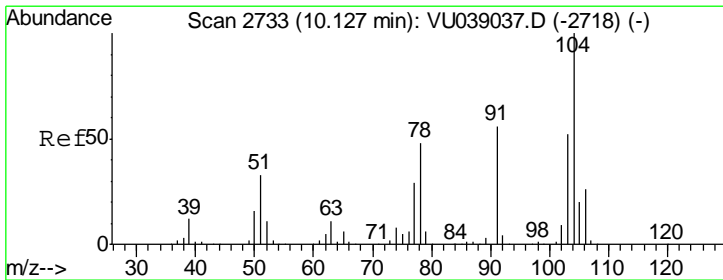
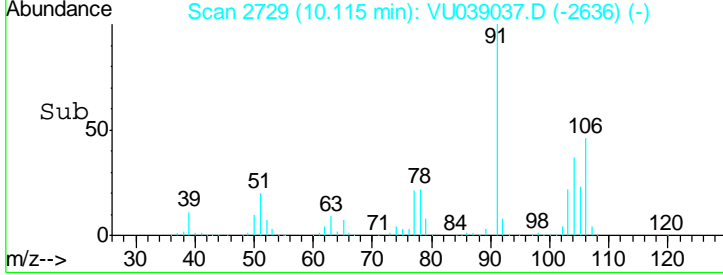
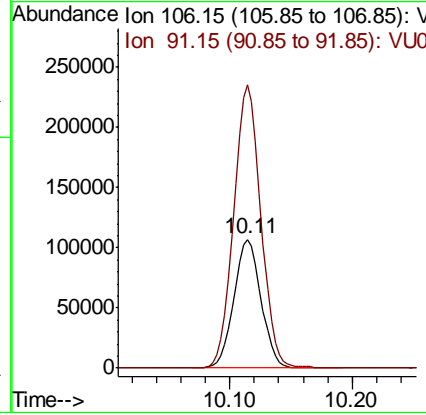
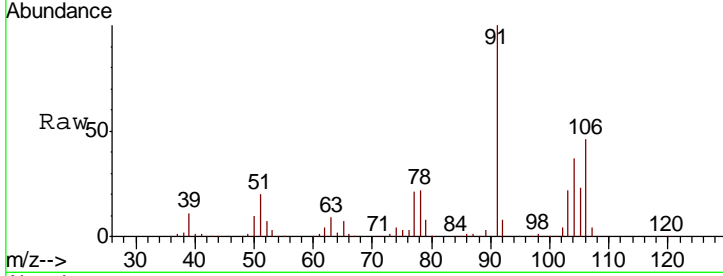




#54
 o-Xylene
 Concen: 5.101 ug/L
 RT: 10.11 min Scan# 2729
 Delta R.T. 0.00 min
 Lab File: VU039037.D
 Acq: 23 Jun 2020 13:43

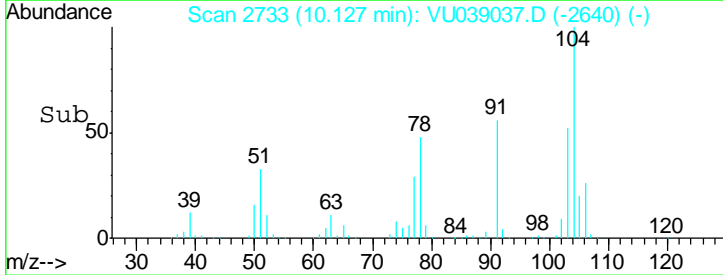
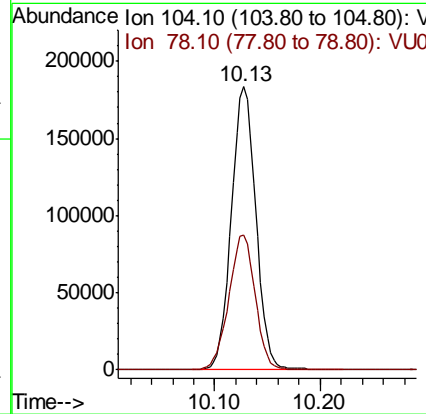
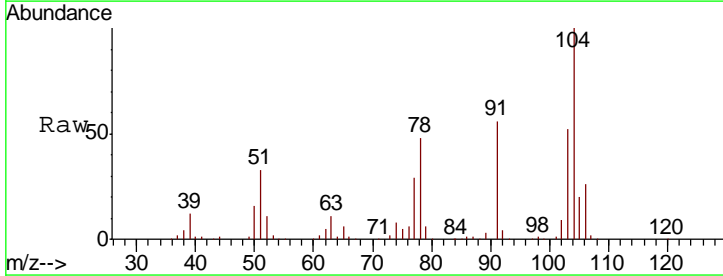
Instrument : MSVOA_U
 ClientSampled : VSTD00503

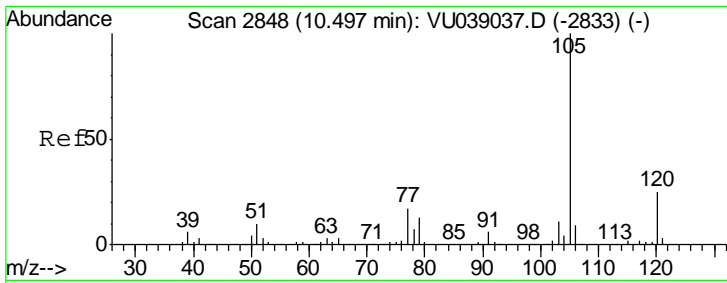
Tgt Ion:106 Resp: 166562
 Ion Ratio Lower Upper
 106 100
 91 219.3 153.5 285.1



#55
 Styrene
 Concen: 5.150 ug/L
 RT: 10.13 min Scan# 2733
 Delta R.T. 0.00 min
 Lab File: VU039037.D
 Acq: 23 Jun 2020 13:43

Tgt Ion:104 Resp: 295339
 Ion Ratio Lower Upper
 104 100
 78 47.8 33.5 62.1

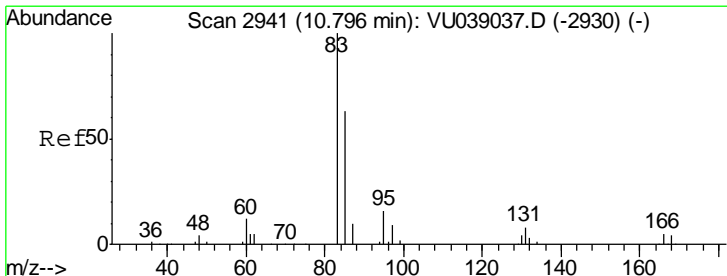
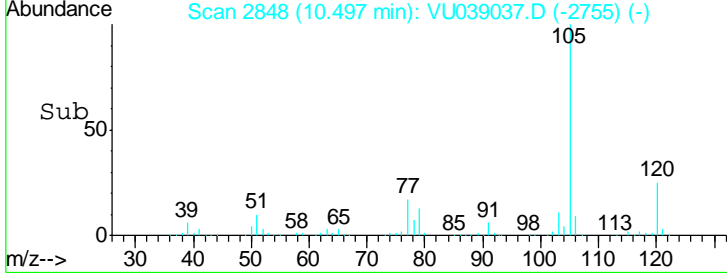
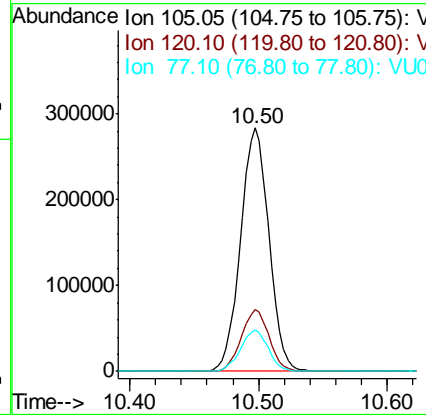
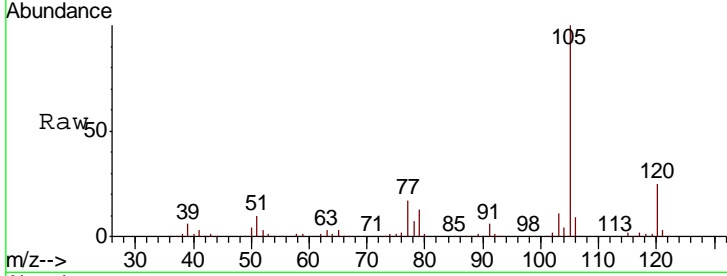




#56
 Isopropylbenzene
 Concen: 5.061 ug/L
 RT: 10.50 min Scan# 2848
 Delta R.T. 0.00 min
 Lab File: VU039037.D
 Acq: 23 Jun 2020 13:43

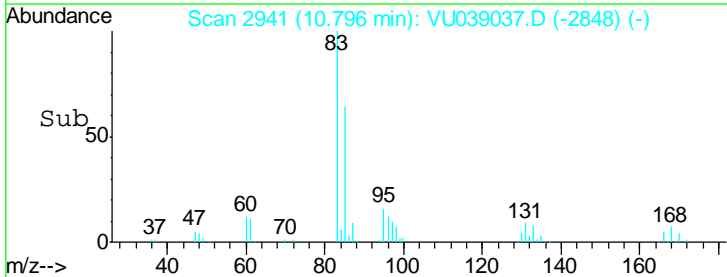
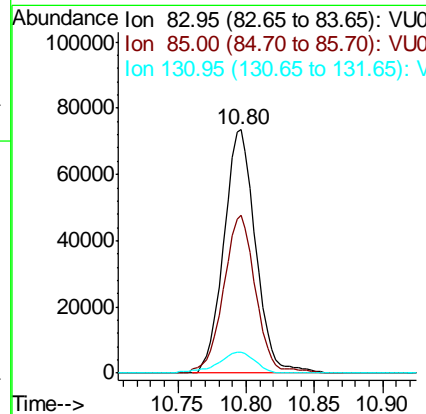
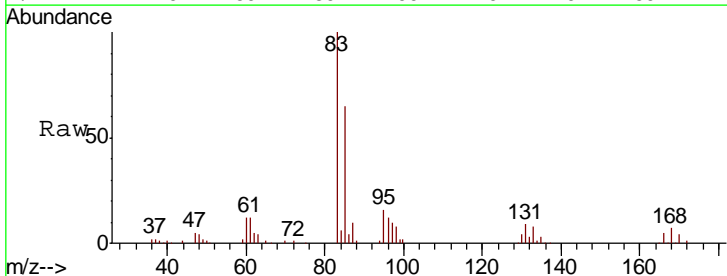
Instrument :
 MSVOA_U
 ClientSampled :
 VSTD00503

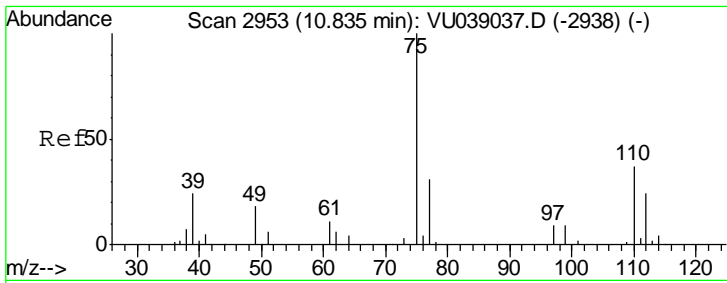
Tgt Ion	Resp	Lower	Upper
105	432993		
120	24.9	19.9	29.9
77	16.6	13.3	19.9



#58
 1,1,2,2-Tetrachloroethane
 Concen: 4.982 ug/L
 RT: 10.80 min Scan# 2941
 Delta R.T. 0.00 min
 Lab File: VU039037.D
 Acq: 23 Jun 2020 13:43

Tgt Ion	Resp	Lower	Upper
83	118832		
85	64.7	45.3	84.1
131	8.6	6.9	10.3

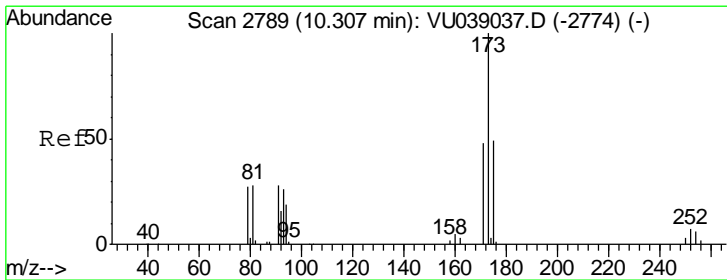
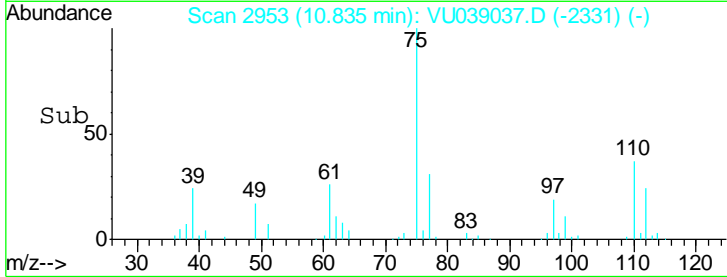
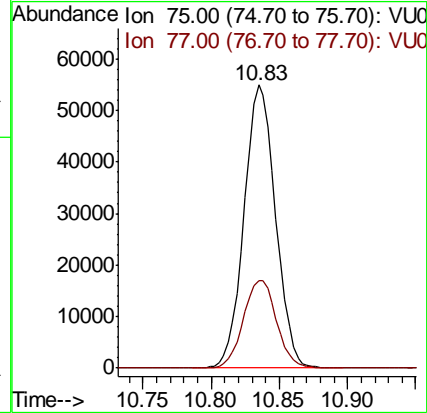
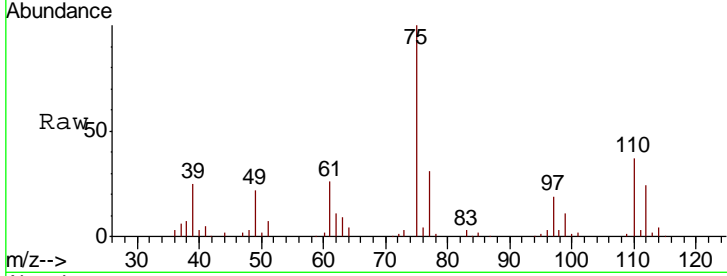




#59
 1,2,3-Trichloropropane
 Concen: 4.853 ug/L
 RT: 10.83 min Scan# 2953
 Delta R.T. 0.00 min
 Lab File: VU039037.D
 Acq: 23 Jun 2020 13:43

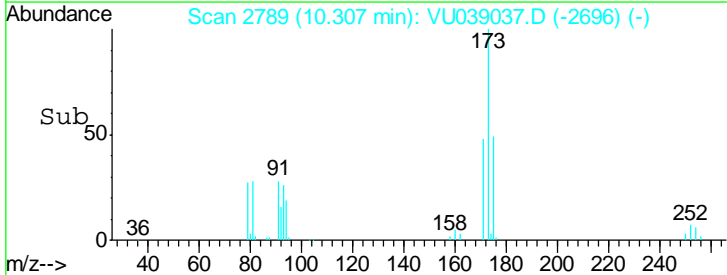
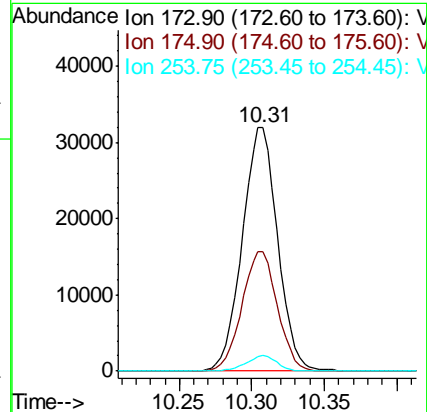
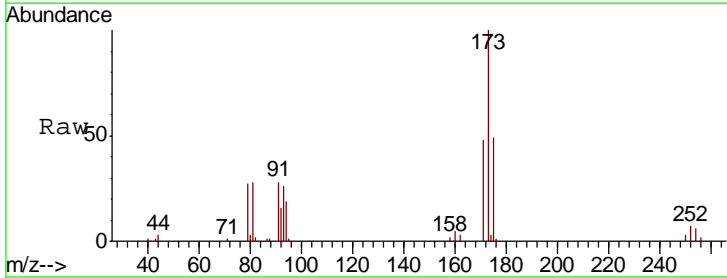
Instrument :
 MSVOA_U
 ClientSampled :
 VSTD00503

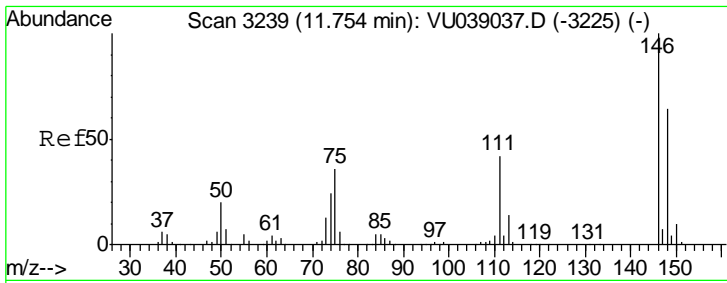
Tgt Ion: 75 Resp: 87826
 Ion Ratio Lower Upper
 75 100
 77 32.7 26.2 39.2



#61
 Bromoform
 Concen: 4.797 ug/L
 RT: 10.31 min Scan# 2789
 Delta R.T. 0.00 min
 Lab File: VU039037.D
 Acq: 23 Jun 2020 13:43

Tgt Ion: 173 Resp: 54037
 Ion Ratio Lower Upper
 173 100
 175 49.1 39.3 58.9
 254 5.5 4.4 6.6

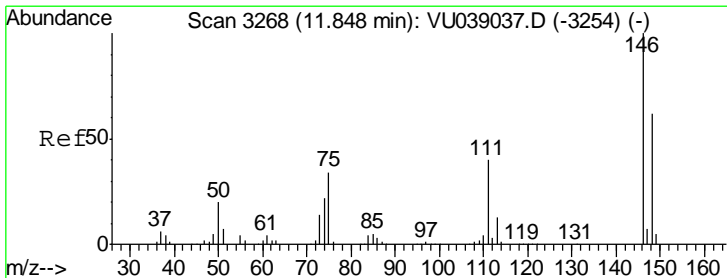
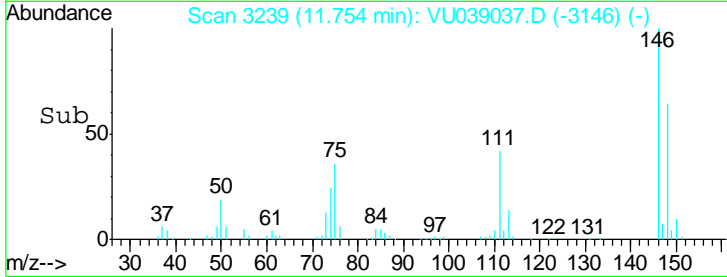
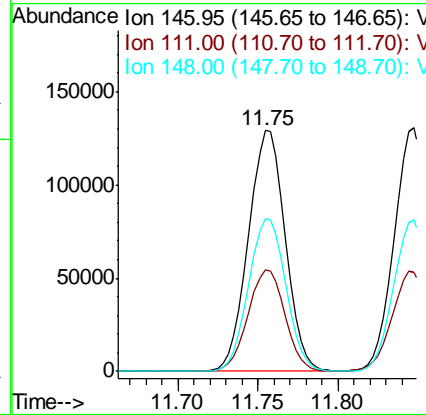
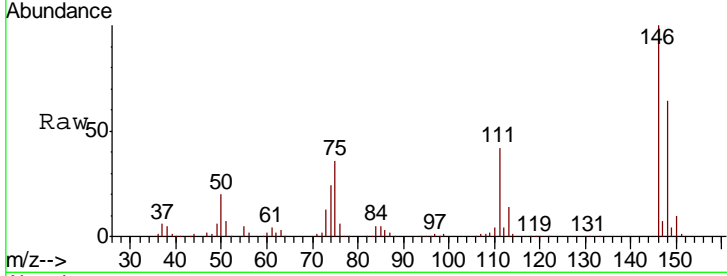




#62
 1,3-Dichlorobenzene
 Concen: 4.957 ug/L
 RT: 11.75 min Scan# 3239
 Delta R.T. 0.00 min
 Lab File: VU039037.D
 Acq: 23 Jun 2020 13:43

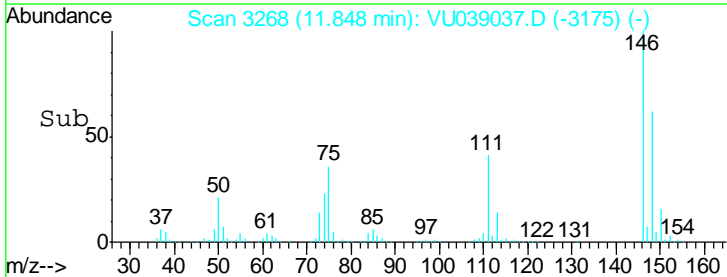
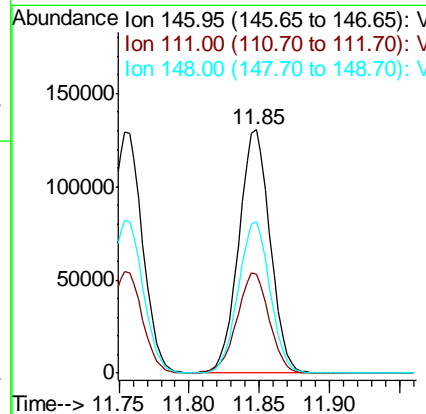
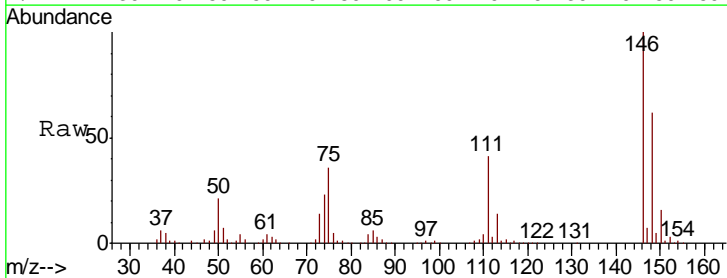
Instrument :
 MSVOA_U
 ClientSampled :
 VSTD00503

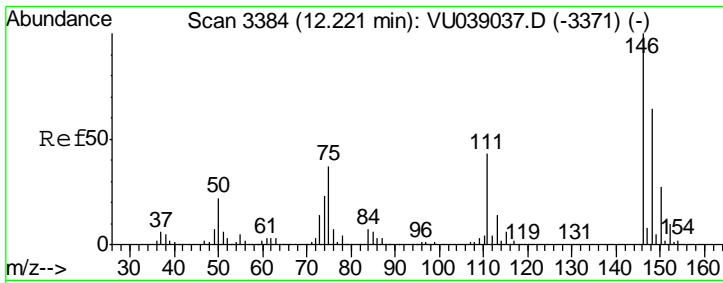
Tgt Ion	Resp	Lower	Upper
146	100		
111	42.2	29.5	54.9
148	63.6	44.5	82.7



#63
 1,4-Dichlorobenzene
 Concen: 4.820 ug/L
 RT: 11.85 min Scan# 3268
 Delta R.T. 0.00 min
 Lab File: VU039037.D
 Acq: 23 Jun 2020 13:43

Tgt Ion	Resp	Lower	Upper
146	100		
111	40.6	28.4	52.8
148	62.0	43.4	80.6

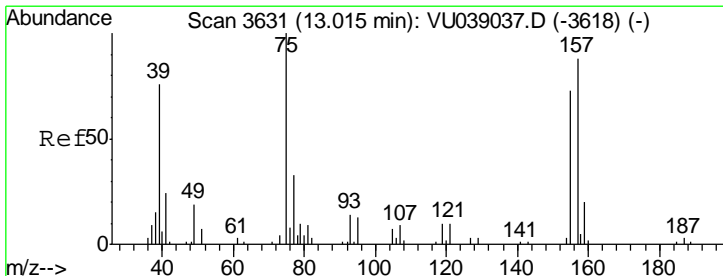
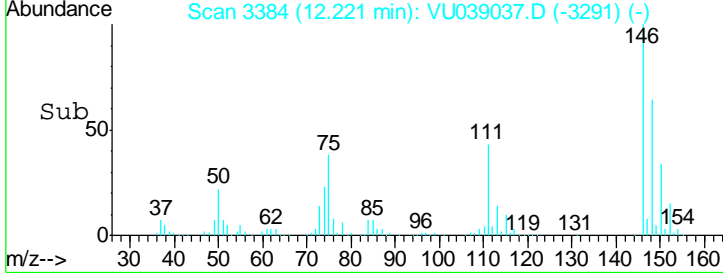
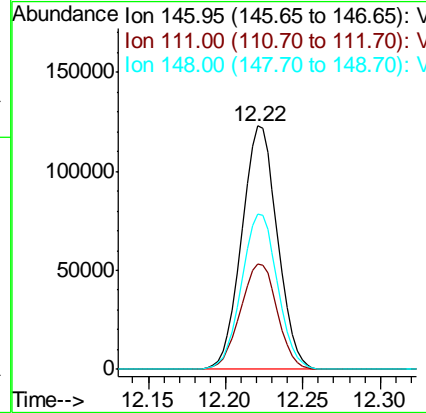
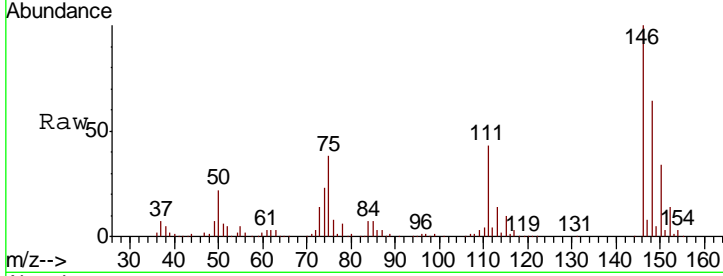




#65
 1,2-Dichlorobenzene
 Concen: 4.789 ug/L
 RT: 12.22 min Scan# 3384
 Delta R.T. 0.00 min
 Lab File: VU039037.D
 Acq: 23 Jun 2020 13:43

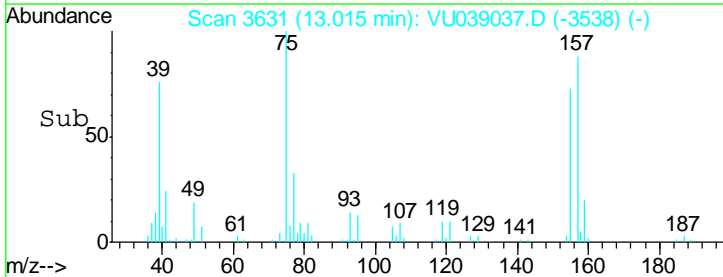
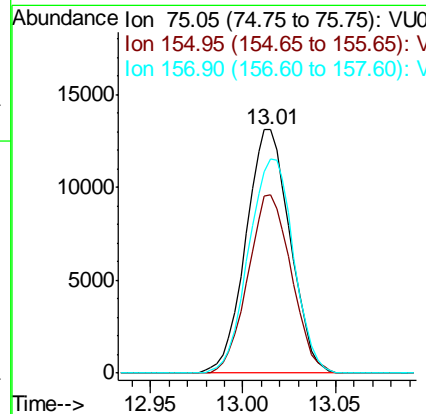
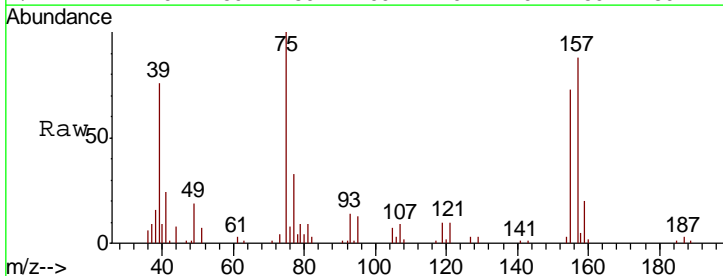
Instrument :
 MSVOA_U
 ClientSampled :
 VSTD00503

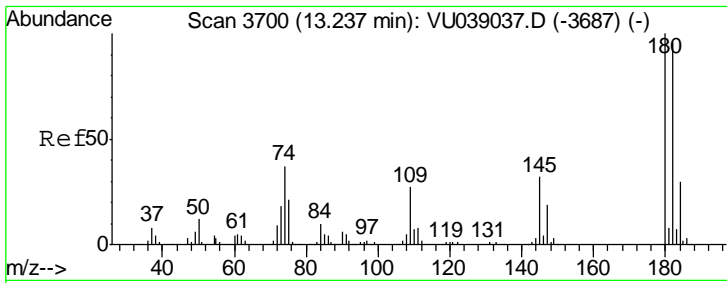
Tgt Ion	Resp	Lower	Upper
146	196910		
111	43.4	34.7	52.1
148	63.6	50.9	76.3



#66
 1,2-Dibromo-3-chloropropane
 Concen: 4.792 ug/L
 RT: 13.01 min Scan# 3631
 Delta R.T. 0.00 min
 Lab File: VU039037.D
 Acq: 23 Jun 2020 13:43

Tgt Ion	Resp	Lower	Upper
75	21735		
155	73.3	58.6	88.0
157	87.9	70.3	105.5

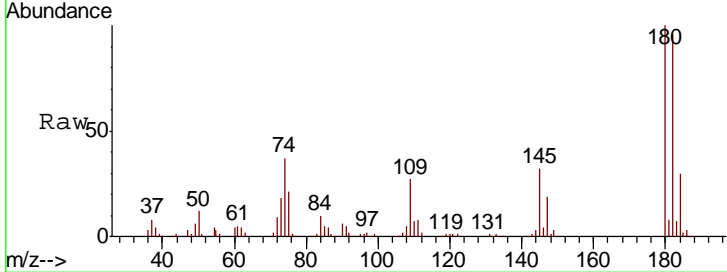




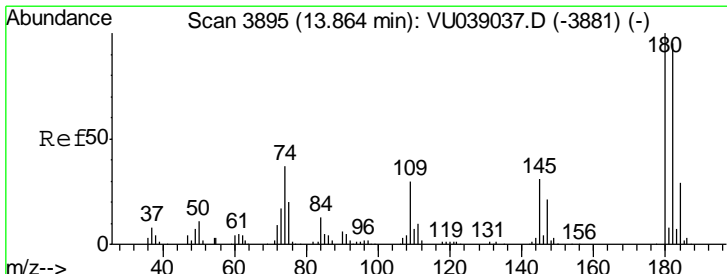
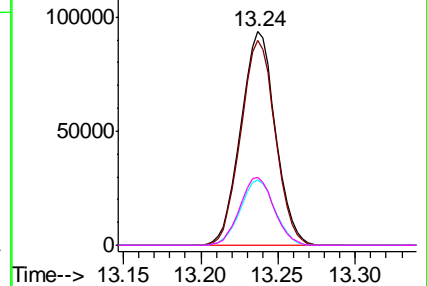
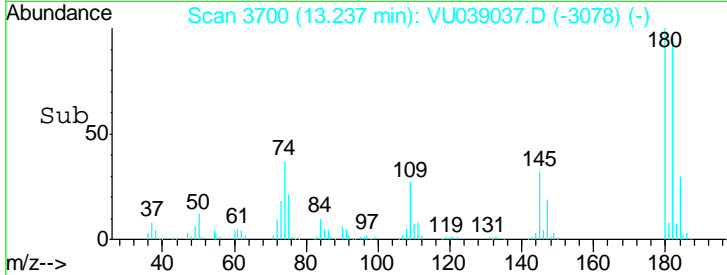
#67
 1,3,5-Trichlorobenzene
 Concen: 4.791 ug/L
 RT: 13.24 min Scan# 3700
 Delta R.T. 0.00 min
 Lab File: VU039037.D
 Acq: 23 Jun 2020 13:43

Instrument :
 MSVOA_U
 ClientSampled :
 VSTD00503

Tgt Ion	Resp	Lower	Upper
180	100		
182	95.4	76.3	114.5
184	30.3	24.2	36.4
145	31.5	25.2	37.8

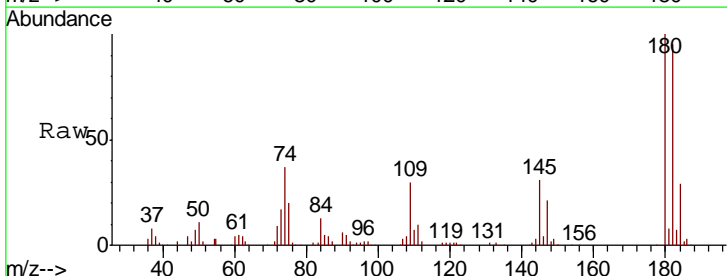


Abundance Ion 180.00 (179.70 to 180.70): V
 Ion 182.00 (181.70 to 182.70): V
 Ion 184.00 (183.70 to 184.70): V
 Ion 145.00 (144.70 to 145.70): V

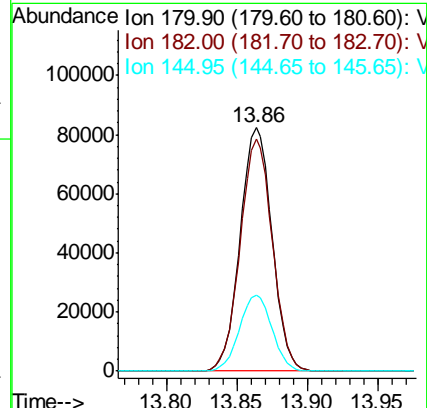
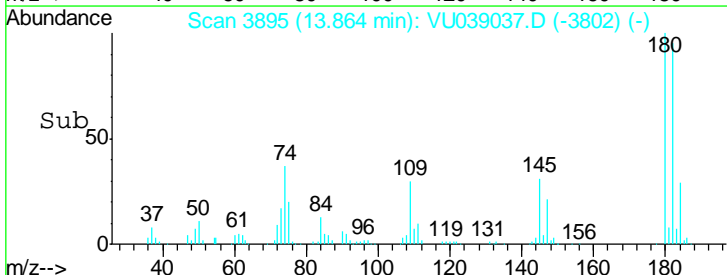


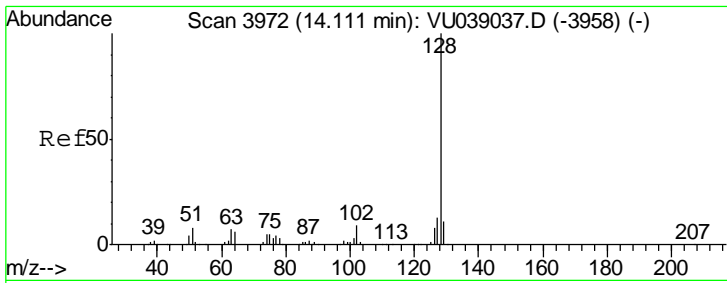
#68
 1,2,4-trichlorobenzene
 Concen: 4.727 ug/L
 RT: 13.86 min Scan# 3895
 Delta R.T. 0.00 min
 Lab File: VU039037.D
 Acq: 23 Jun 2020 13:43

Tgt Ion	Resp	Lower	Upper
180	100		
182	96.3	77.0	115.6
145	31.8	25.4	38.2



Abundance Ion 179.90 (179.60 to 180.60): V
 Ion 182.00 (181.70 to 182.70): V
 Ion 144.95 (144.65 to 145.65): V

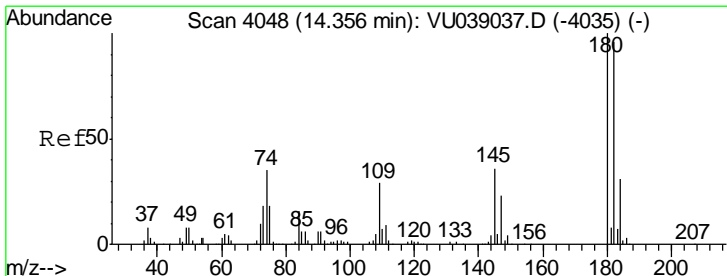
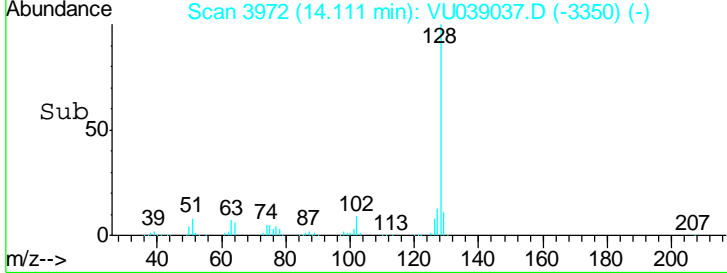
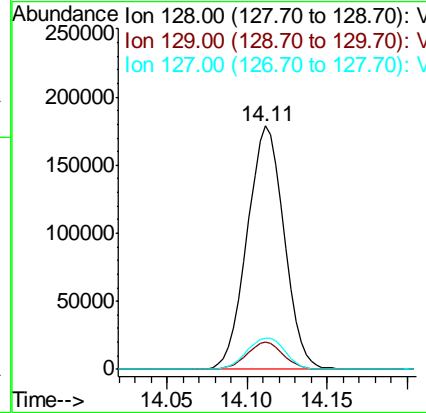
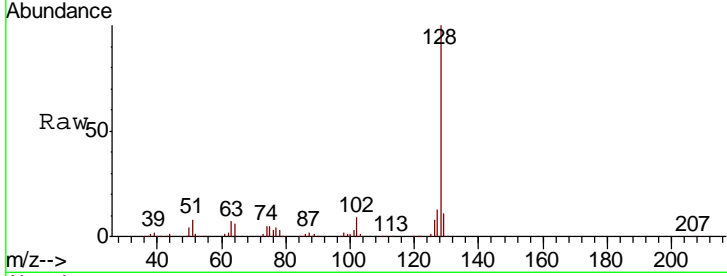




#69
 Naphthalene
 Concen: 4.783 ug/L
 RT: 14.11 min Scan# 3972
 Delta R.T. 0.00 min
 Lab File: VU039037.D
 Acq: 23 Jun 2020 13:43

Instrument :
 MSVOA_U
 ClientSampled :
 VSTD00503

Tgt Ion	Resp	Lower	Upper
128	100		
129	11.1	8.9	13.3
127	13.5	10.8	16.2



#70
 1,2,3-Trichlorobenzene
 Concen: 4.848 ug/L
 RT: 14.36 min Scan# 4048
 Delta R.T. 0.00 min
 Lab File: VU039037.D
 Acq: 23 Jun 2020 13:43

Tgt Ion	Resp	Lower	Upper
180	100		
182	94.7	75.8	113.6
145	34.5	27.6	41.4

