

Data Path : Z:\VOASRV\HPCHEM1\MSVOA U\DATA\VU062320\
 Data File : VU039045.D
 Acq On : 23 Jun 2020 17:21
 Operator : SY/MD
 Sample : L3073-09
 Misc : 25.0mL/MSVOA U/WATER
 ALS Vial : 15 Sample Multiplier: 1

Instrument :
 MSVOA_U
 ClientSampled :
 VHBLK01

Integration Parameters: rteint.p
 Integrator: RTE
 Smoothing : ON Filtering: 5
 Sampling : 1 Min Area: 3 % of largest Peak
 Start Thrs: 0.1 Max Peaks: 100
 Stop Thrs : 0 Peak Location: TOP

If leading or trailing edge < 100 prefer < Baseline drop else tangent >
 Peak separation: 5

Method : Z:\VOASRV\HPCHEM1\MSVOA_U\METHOD\SOMUTR062320WMA.M
 Title : TRACE VOA SOM01.0

Signal : TIC

peak #	R.T. min	first scan	max scan	last scan	PK TY	peak height	corr. area	corr. % max.	% of total
1	1.613	78	85	99	rVB	140842	155569	10.05%	1.613%
2	1.932	176	184	201	rVB	119705	150109	9.70%	1.556%
3	2.594	377	390	410	rBV	222252	369379	23.86%	3.829%
4	3.076	529	540	553	rBV2	17318	31337	2.02%	0.325%
5	4.671	1018	1036	1077	rBV	219295	678441	43.82%	7.033%
6	5.102	1154	1170	1194	rBV	205151	460072	29.72%	4.770%
7	5.758	1349	1374	1391	rBV2	411047	1088185	70.29%	11.281%
8	6.279	1521	1536	1556	rBV	354410	669755	43.26%	6.943%
9	6.719	1658	1673	1694	rBV	272443	522308	33.74%	5.415%
10	7.587	1931	1943	1963	rBV	135923	243223	15.71%	2.522%
11	7.922	2033	2047	2065	rBV	456902	784968	50.70%	8.138%
12	8.201	2117	2134	2153	rBV	95345	162366	10.49%	1.683%
13	8.655	2260	2275	2303	rBV	865684	1548233	100.00%	16.051%
14	8.934	2355	2362	2376	rBV3	9533	17418	1.13%	0.181%
15	9.433	2504	2517	2536	rBV	513735	856891	55.35%	8.883%
16	10.770	2919	2933	2949	rBV	238165	378475	24.45%	3.924%
17	10.899	2964	2973	2985	rBV4	9606	15764	1.02%	0.163%
18	11.822	3248	3260	3277	rBV	476642	760257	49.10%	7.882%
19	12.204	3366	3379	3397	rBV	472568	753178	48.65%	7.808%

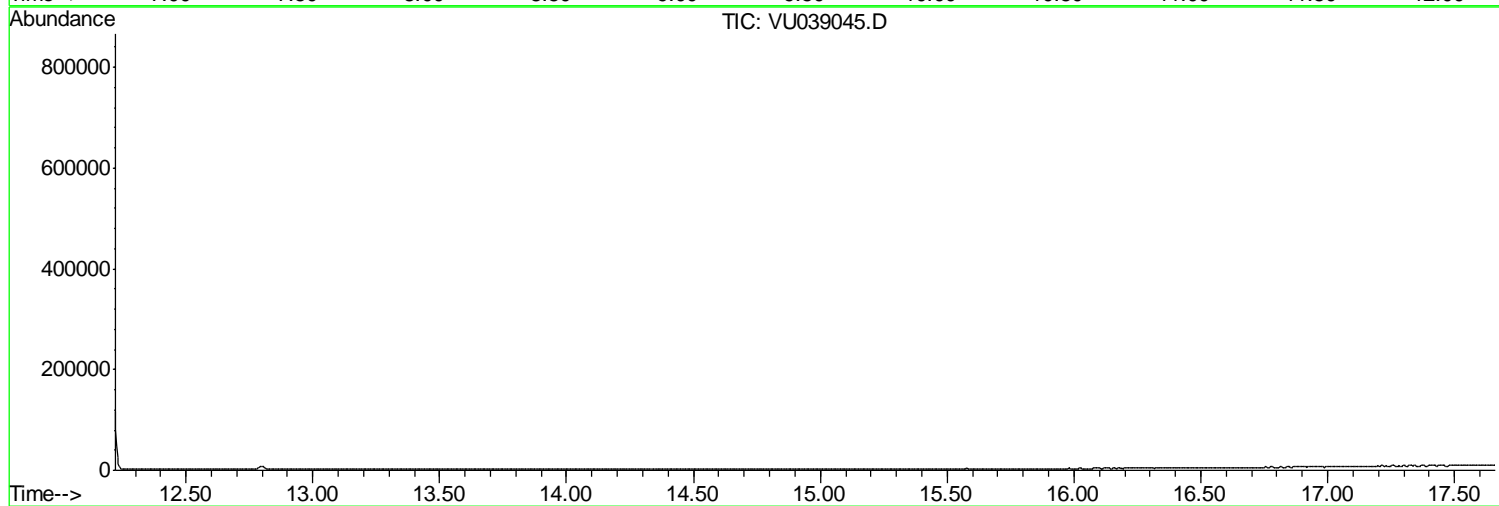
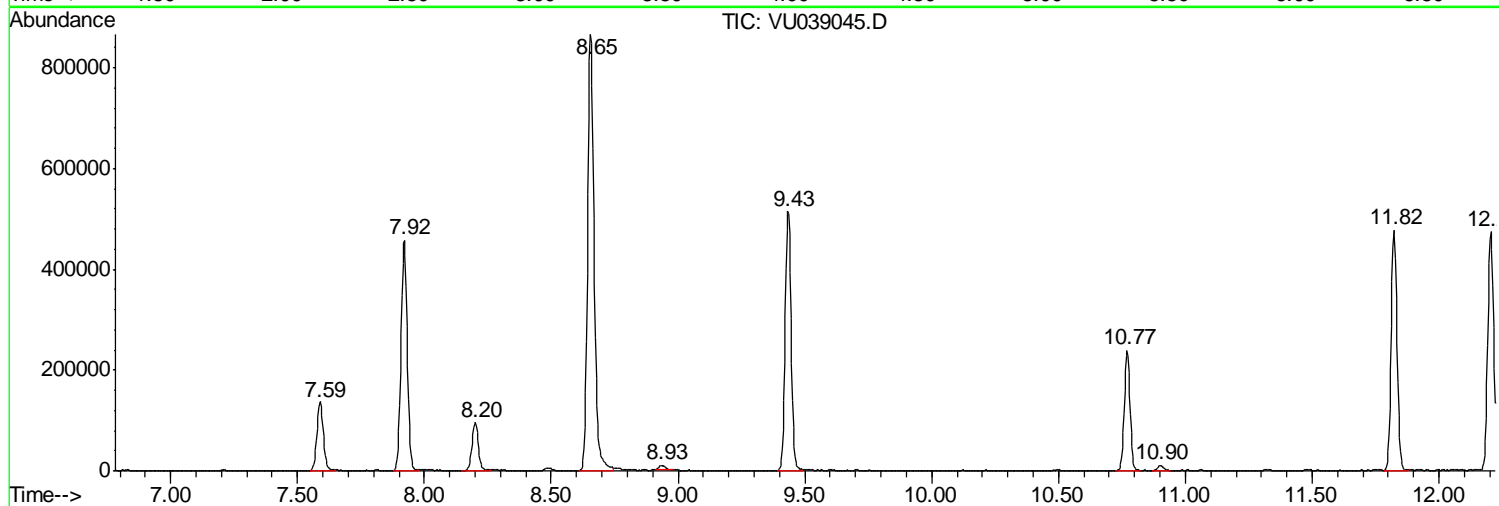
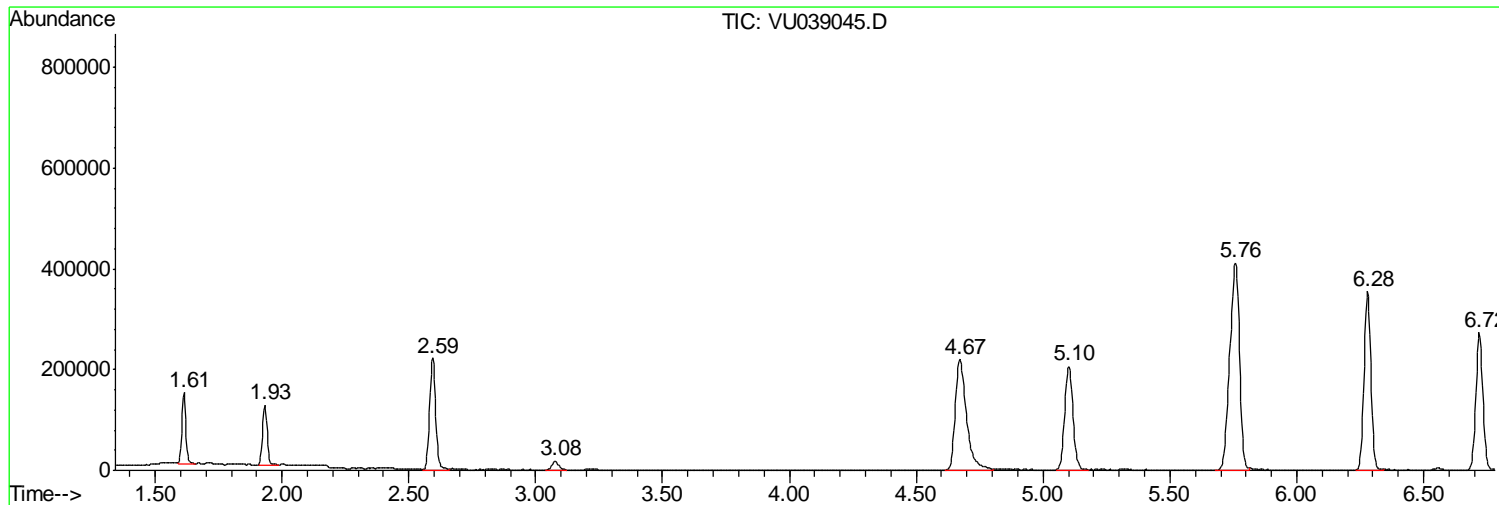
Sum of corrected areas: 9645928

Data Path : Z:\VOASRV\HPCHEM1\MSVOA U\DATA\VU062320\
Data File : VU039045.D
Acq On : 23 Jun 2020 17:21
Operator : SY/MD
Sample : L3073-09
Misc : 25.0mL/MSVOA U/WATER
ALS Vial : 15 Sample Multiplier: 1

Instrument :
MSVOA_U
ClientSampled :
VHBLK01

Quant Method : Z:\VOASRV\HPCHEM1\MSVOA_U\METHOD\SOMUTR062320WMA.M
Quant Title : TRACE VOA SOM01.0

TIC Library : C:\DATABASE\NIST11.L
TIC Integration Parameters: LSCINT.P



Data Path : Z:\VOASRV\HPCHEM1\MSVOA_U\DATA\VU062320\
Data File : VU039045.D
Acq On : 23 Jun 2020 17:21
Operator : SY/MD
Sample : L3073-09
Misc : 25.0mL/MSVOA_U/WATER
ALS Vial : 15 Sample Multiplier: 1

Instrument :
MSVOA_U
ClientSampleId :
VHBLK01

Quant Method : Z:\VOASRV\HPCHEM1\MSVOA_U\METHOD\SOMUTR062320WMA.M
Quant Title : TRACE VOA SOM01.0

TIC Library : C:\DATABASE\NIST11.L
TIC Integration Parameters: LSCINT.P

No Library Search Compounds Detected

Data Path : Z:\VOASRV\HPCHEM1\MSVOA_U\DATA\VU062320\
Data File : VU039045.D
Acq On : 23 Jun 2020 17:21
Operator : SY/MD
Sample : L3073-09
Misc : 25.0mL/MSVOA_U/WATER
ALS Vial : 15 Sample Multiplier: 1

Instrument :
MSVOA_U
ClientSampleId :
VHBLK01

Quant Method : Z:\VOASRV\HPCHEM1\MSVOA_U\METHOD\SOMUTR062320WMA.M
Quant Title : TRACE VOA SOM01.0

TIC Library : C:\DATABASE\NIST11.L
TIC Integration Parameters: LSCINT.P

TIC Top Hit name	RT	EstConc	Units	Response	--Internal Standard--			
					#	RT	Resp	Conc
