

Data Path : Z:\VOASRV\HPCHEM1\MSVOA U\DATA\VU062420\  
 Data File : VU039085.D  
 Acq On : 25 Jun 2020 01:03  
 Operator : SY/MD  
 Sample : L3110-01  
 Misc : 25.0mL/MSVOA U/WATER  
 ALS Vial : 1 Sample Multiplier: 1

Instrument :  
 MSVOA\_U  
 ClientSampleId :  
 F9F05

Integration Parameters: rteint.p  
 Integrator: RTE  
 Smoothing : ON Filtering: 5  
 Sampling : 1 Min Area: 3 % of largest Peak  
 Start Thrs: 0.1 Max Peaks: 100  
 Stop Thrs : 0 Peak Location: TOP

If leading or trailing edge < 100 prefer < Baseline drop else tangent >  
 Peak separation: 5

Method : Z:\VOASRV\HPCHEM1\MSVOA\_U\METHOD\SOMUTR062320WMA.M  
 Title : TRACE VOA SOM01.0

Signal : TIC

peak #	R.T. min	first scan	max scan	last scan	PK TY	peak height	corr. area	corr. % max.	% of total
1	1.613	77	85	97	rVB	134669	153581	10.06%	1.648%
2	1.932	175	184	198	rBV	116538	148465	9.73%	1.593%
3	2.594	377	390	407	rBV	218143	363355	23.81%	3.899%
4	4.674	1019	1037	1066	rBV	220015	667093	43.71%	7.158%
5	5.099	1151	1169	1190	rBV	207589	451910	29.61%	4.849%
6	5.758	1352	1374	1389	rBV2	422880	1100344	72.10%	11.806%
7	5.829	1390	1396	1408	rVB2	16589	29548	1.94%	0.317%
8	6.279	1516	1536	1555	rBV	333685	620007	40.63%	6.652%
9	6.719	1659	1673	1691	rBV	271990	522141	34.21%	5.602%
10	7.591	1929	1944	1960	rBV	128603	226301	14.83%	2.428%
11	7.922	2033	2047	2065	rBV	454606	783356	51.33%	8.405%
12	8.202	2115	2134	2154	rBV	86277	153282	10.04%	1.645%
13	8.655	2259	2275	2317	rBV	825923	1526120	100.00%	16.374%
14	9.433	2504	2517	2536	rBV	477683	794926	52.09%	8.529%
15	10.771	2921	2933	2948	rVB	226677	363090	23.79%	3.896%
16	11.822	3247	3260	3275	rBV	437054	682232	44.70%	7.320%
17	12.205	3366	3379	3399	rBV	447576	734399	48.12%	7.880%

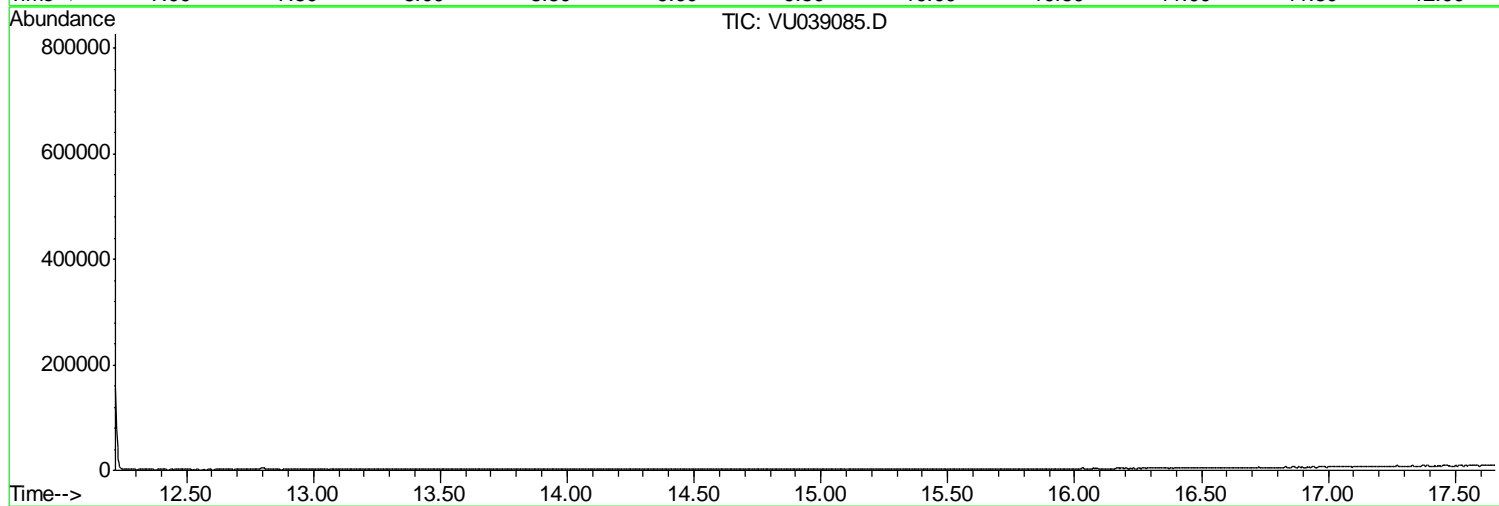
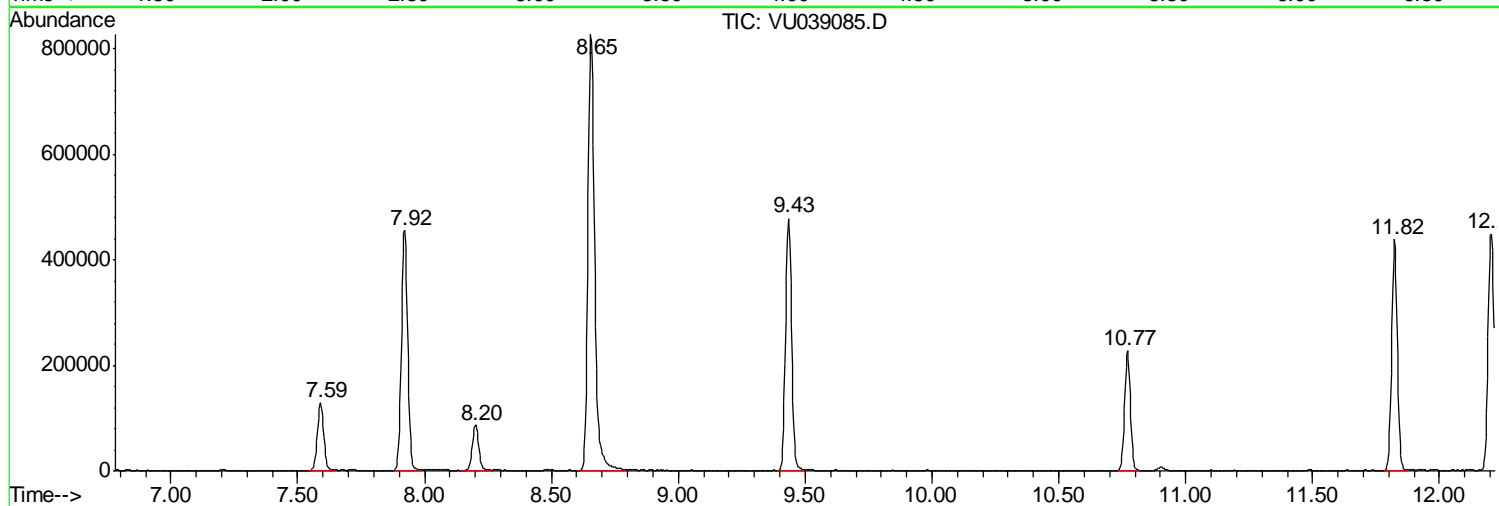
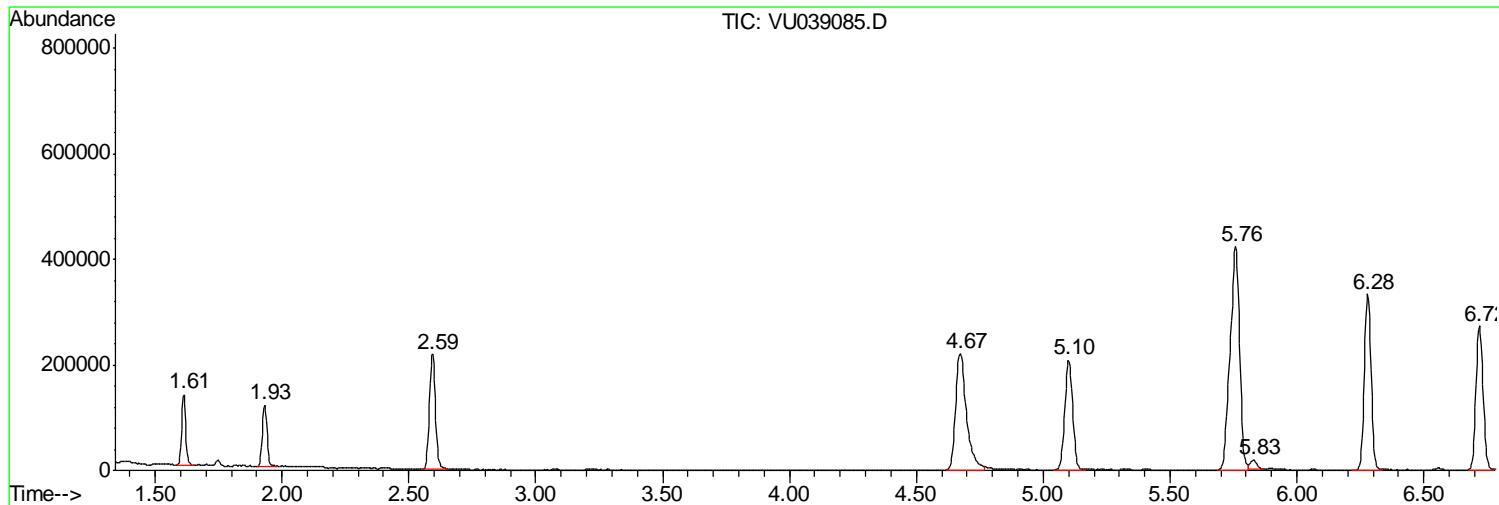
Sum of corrected areas: 9320150

Data Path : Z:\VOASRV\HPCHEM1\MSVOA U\DATA\VU062420\  
Data File : VU039085.D  
Acq On : 25 Jun 2020 01:03  
Operator : SY/MD  
Sample : L3110-01  
Misc : 25.0mL/MSVOA U/WATER  
ALS Vial : 1 Sample Multiplier: 1

Instrument :  
MSVOA\_U  
ClientSampled :  
F9F05

Quant Method : Z:\VOASRV\HPCHEM1\MSVOA\_U\METHOD\SOMUTR062320WMA.M  
Quant Title : TRACE VOA SOM01.0

TIC Library : C:\DATABASE\NIST11.L  
TIC Integration Parameters: LSCINT.P



Data Path : Z:\VOASRV\HPCHEM1\MSVOA\_U\DATA\VU062420\  
Data File : VU039085.D  
Acq On : 25 Jun 2020 01:03  
Operator : SY/MD  
Sample : L3110-01  
Misc : 25.0mL/MSVOA\_U/WATER  
ALS Vial : 1 Sample Multiplier: 1

Instrument :  
MSVOA\_U  
ClientSampleId :  
F9F05

Quant Method : Z:\VOASRV\HPCHEM1\MSVOA\_U\METHOD\SOMUTR062320WMA.M  
Quant Title : TRACE VOA SOM01.0

TIC Library : C:\DATABASE\NIST11.L  
TIC Integration Parameters: LSCINT.P

No Library Search Compounds Detected

\*\*\*\*\*

Data Path : Z:\VOASRV\HPCHEM1\MSVOA\_U\DATA\VU062420\  
Data File : VU039085.D  
Acq On : 25 Jun 2020 01:03  
Operator : SY/MD  
Sample : L3110-01  
Misc : 25.0mL/MSVOA\_U/WATER  
ALS Vial : 1 Sample Multiplier: 1

Instrument :  
MSVOA\_U  
ClientSampleId :  
F9F05

Quant Method : Z:\VOASRV\HPCHEM1\MSVOA\_U\METHOD\SOMUTR062320WMA.M  
Quant Title : TRACE VOA SOM01.0

TIC Library : C:\DATABASE\NIST11.L  
TIC Integration Parameters: LSCINT.P

TIC Top Hit name	RT	EstConc	Units	Response	--Internal Standard--			
					#	RT	Resp	Conc

---