

Data Path : Z:\VOASRV\HPCHEM1\MSVOA U\DATA\VU062518\
 Data File : VU024912.D
 Acq On : 26 Jun 2018 06:39
 Operator : MD/SY
 Sample : J3669-29ME 200X
 Misc : 6.26µ/5.0mL/100uL/5.0mL/MSVOA_U/MEOH
 ALS Vial : 50 Sample Multiplier: 1

Instrument :
 MSVOA_U
 ClientSampleId :
 WP021SB474-29-31-180620ME

Quant Time: Jun 26 08:50:05 2018
 Quant Method : Z:\VOASRV\HPCHEM1\MSVOA_U\METHOD\82U061318W.M
 Quant Title : SW846 8260
 QLast Update : Wed Jun 13 13:55:26 2018
 Response via : Initial Calibration

Internal Standards	R.T.	QIon	Response	Conc	Units	Dev(Min)
1) Pentafluorobenzene	4.99	168	222313	50.00	ug/l	0.00
34) 1,4-Difluorobenzene	5.89	114	334820	50.00	ug/l	0.00
63) Chlorobenzene-d5	9.09	117	310703	50.00	ug/l	0.00
72) 1,4-Dichlorobenzene-d4	11.49	152	164126	50.00	ug/l	0.00

System Monitoring Compounds	R.T.	QIon	Response	Conc	Units	Dev(Min)
33) 1,2-Dichloroethane-d4	5.31	65	167723	46.21	ug/l	0.00
Spiked Amount				50.000		
Recovery				=	92.42%	
35) Dibromofluoromethane	4.89	113	129240	46.51	ug/l	0.00
Spiked Amount				50.000		
Recovery				=	93.02%	
50) Toluene-d8	7.57	98	484490	47.80	ug/l	0.00
Spiked Amount				50.000		
Recovery				=	95.60%	
62) 4-Bromofluorobenzene	10.31	95	179671	44.65	ug/l	0.00
Spiked Amount				50.000		
Recovery				=	89.30%	

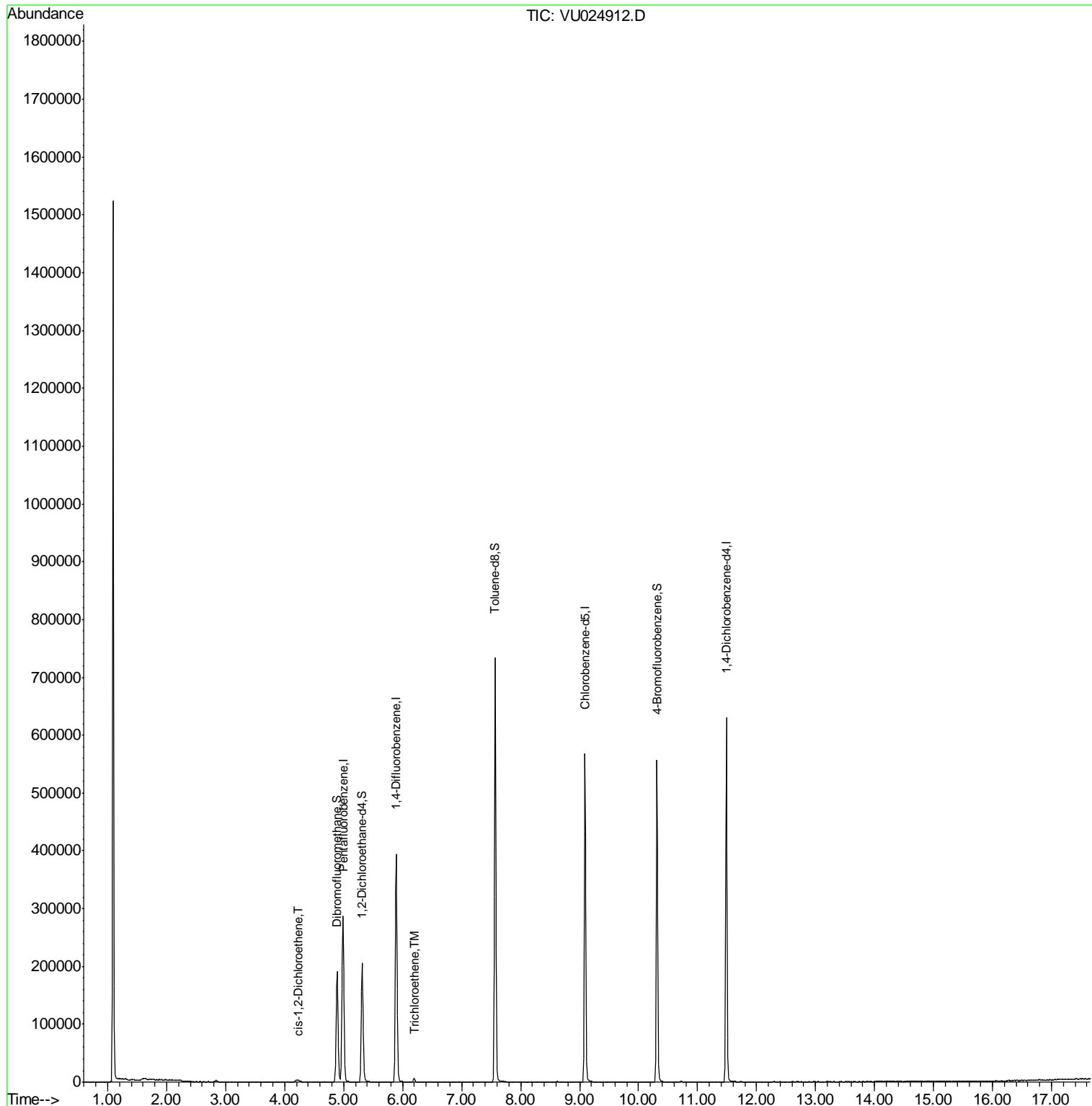
Target Compounds	R.T.	QIon	Response	Conc	Units	Qvalue
27) cis-1,2-Dichloroethene	4.24	96	1578	0.49	ug/l	92
44) Trichloroethene	6.20	130	2020	0.63	ug/l	94

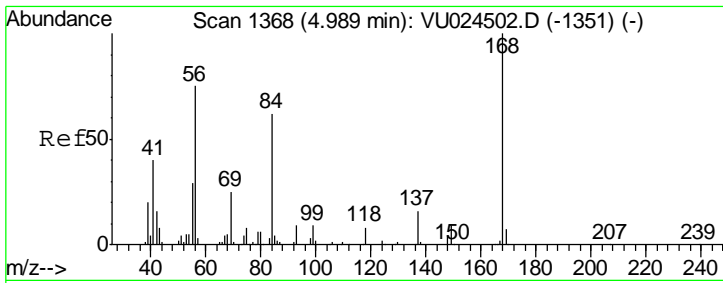
(#) = qualifier out of range (m) = manual integration (+) = signals summed

Data Path : Z:\VOASRV\HPCHEM1\MSVOA U\DATA\VU062518\
 Data File : VU024912.D
 Acq On : 26 Jun 2018 06:39
 Operator : MD/SY
 Sample : J3669-29ME 200X
 Misc : 6.26µ/5.0mL/100uL/5.0mL/MSVOA_U/MEOH
 ALS Vial : 50 Sample Multiplier: 1

Instrument :
 MSVOA_U
 ClientSampleId :
 WP021SB474-29-31-180620ME

Quant Time: Jun 26 08:50:05 2018
 Quant Method : Z:\VOASRV\HPCHEM1\MSVOA_U\METHOD\82U061318W.M
 Quant Title : SW846 8260
 QLast Update : Wed Jun 13 13:55:26 2018
 Response via : Initial Calibration

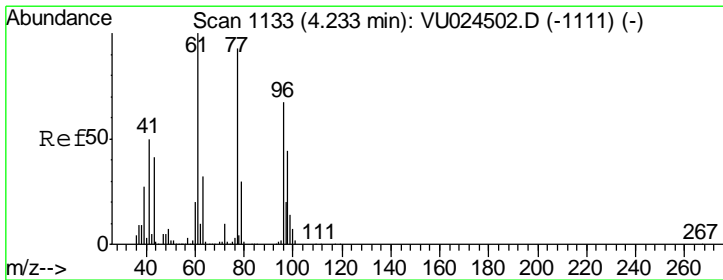
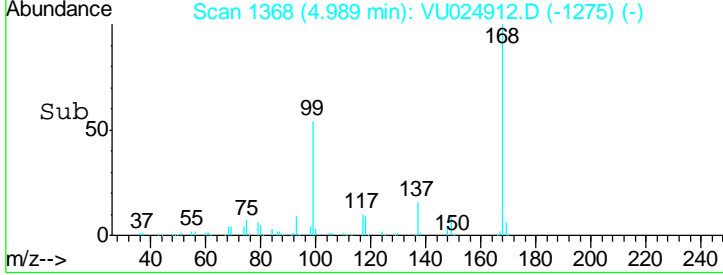
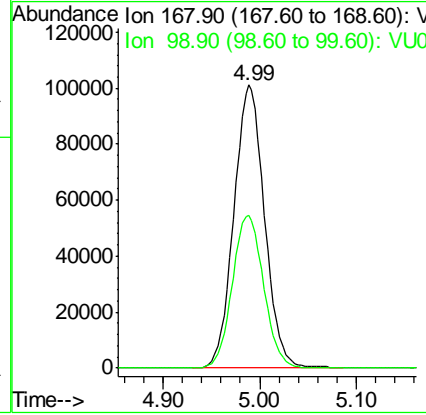
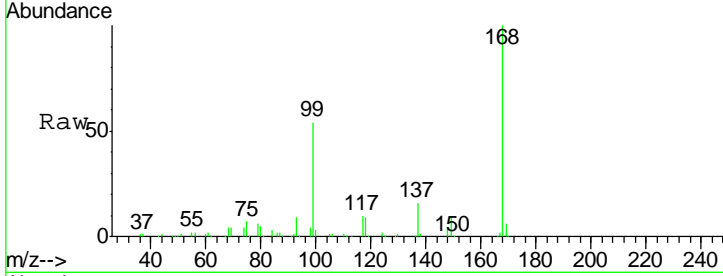




#1
 Pentafluorobenzene
 Concen: 50.00 ug/l
 RT: 4.99 min Scan# 1368
 Delta R.T. -0.00 min
 Lab File: VU024912.D
 Acq: 26 Jun 2018 06:39

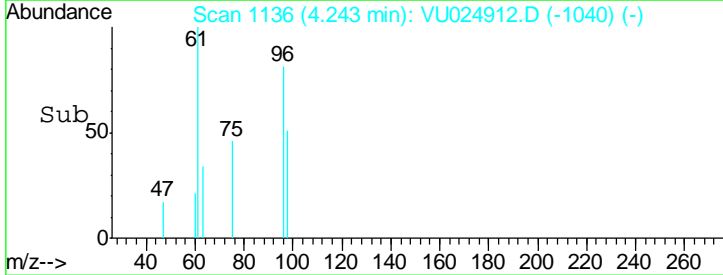
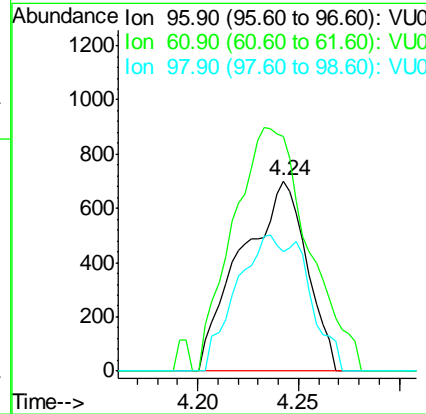
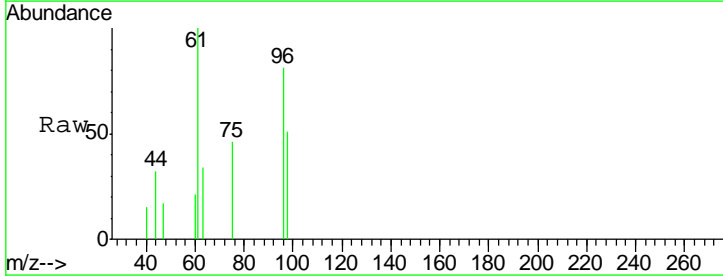
Instrument : MSVOA_U
 ClientSampleId : WP021SB474-29-31-180620ME

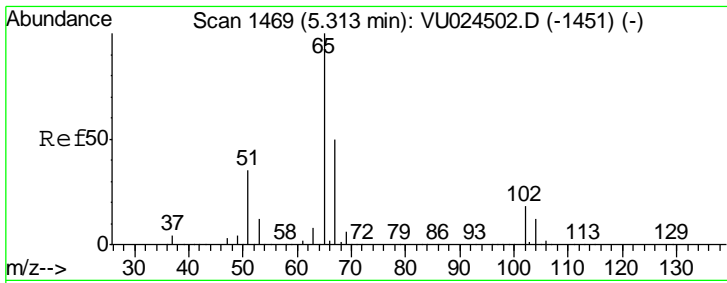
Tgt Ion	Resp	Lower	Upper
168	222313		
99	54.0	43.2	64.8



#27
 cis-1,2-Dichloroethene
 Concen: 0.49 ug/l
 RT: 4.24 min Scan# 1136
 Delta R.T. 0.01 min
 Lab File: VU024912.D
 Acq: 26 Jun 2018 06:39

Tgt Ion	Resp	Lower	Upper
96	1578		
61	147.8	0.0	306.6
98	51.2	0.0	128.8

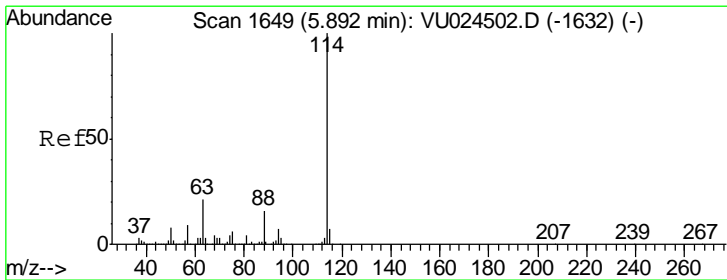
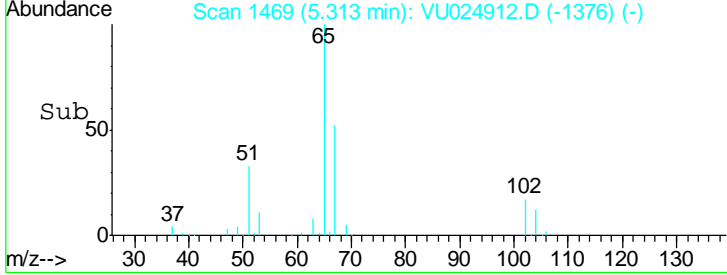
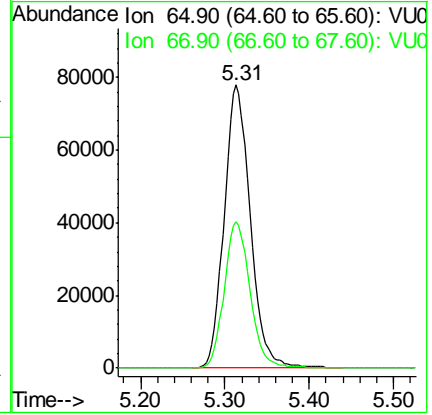
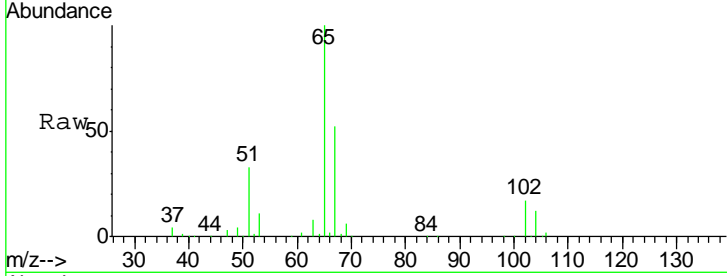




#33
 1,2-Dichloroethane-d4
 Concen: 46.21 ug/l
 RT: 5.31 min Scan# 1469
 Delta R.T. -0.00 min
 Lab File: VU024912.D
 Acq: 26 Jun 2018 06:39

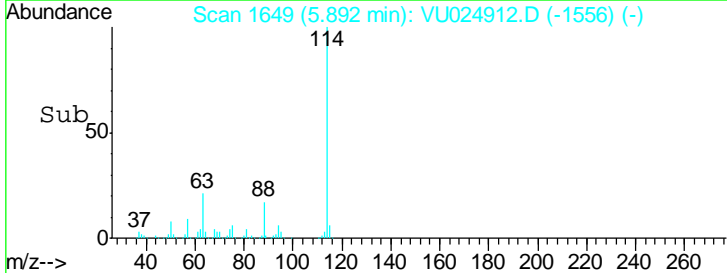
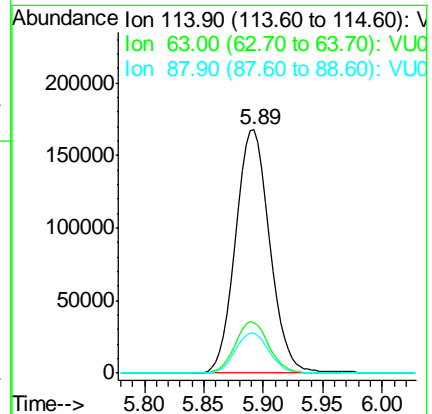
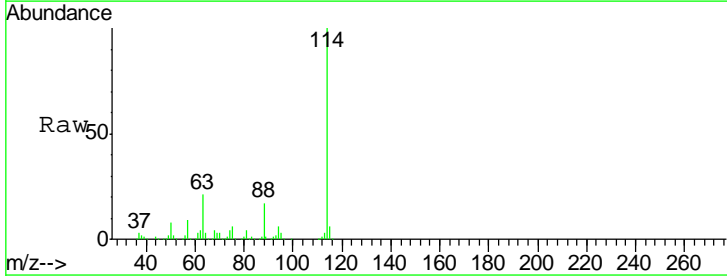
Instrument : MSVOA_U
 ClientSampled : WP021SB474-29-31-180620ME

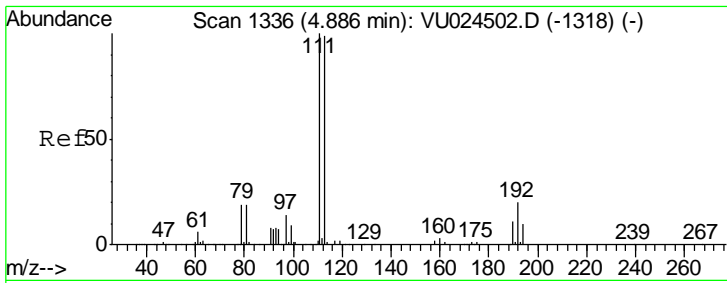
Tgt Ion	Resp	Lower	Upper
65	167723		
67	50.9	0.0	107.0



#34
 1,4-Difluorobenzene
 Concen: 50.00 ug/l
 RT: 5.89 min Scan# 1649
 Delta R.T. -0.00 min
 Lab File: VU024912.D
 Acq: 26 Jun 2018 06:39

Tgt Ion	Resp	Lower	Upper
114	334820		
63	20.9	0.0	45.4
88	16.5	0.0	31.0

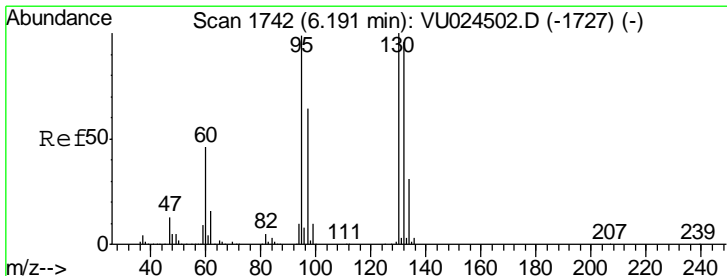
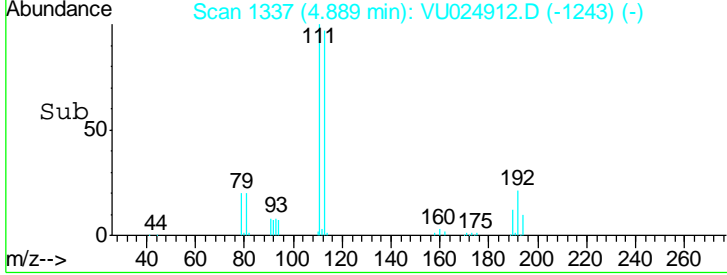
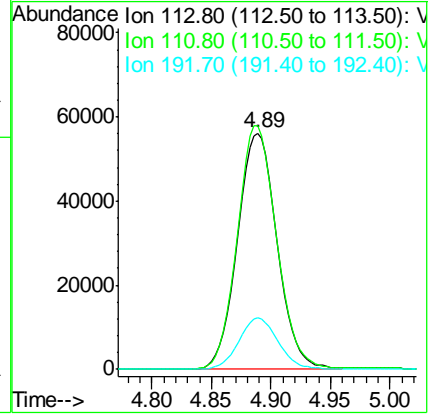
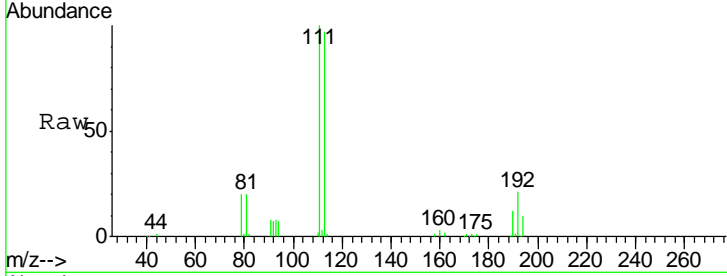




#35
 Dibromofluoromethane
 Concen: 46.51 ug/l
 RT: 4.89 min Scan# 1337
 Delta R.T. 0.00 min
 Lab File: VU024912.D
 Acq: 26 Jun 2018 06:39

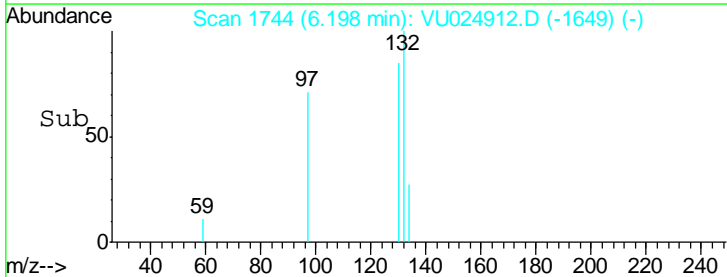
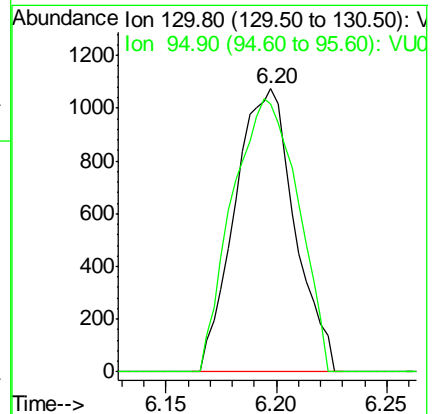
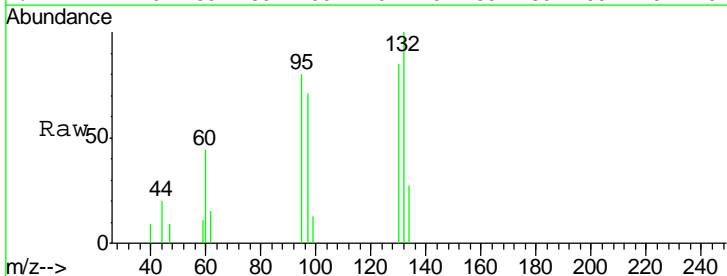
Instrument : MSVOA_U
 ClientSampleId : WP021SB474-29-31-180620ME

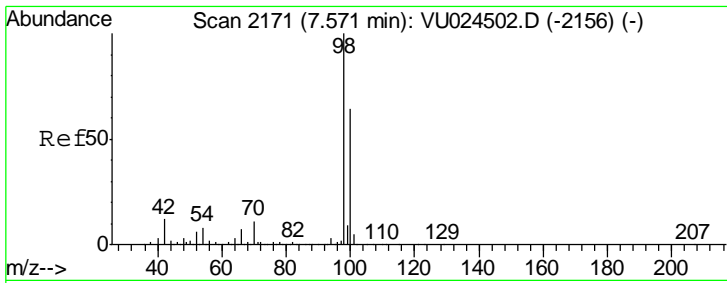
Tgt Ion	Resp	Lower	Upper
113	100		
111	102.7	82.2	123.4
192	21.6	16.2	24.4



#44
 Trichloroethene
 Concen: 0.63 ug/l
 RT: 6.20 min Scan# 1744
 Delta R.T. 0.01 min
 Lab File: VU024912.D
 Acq: 26 Jun 2018 06:39

Tgt Ion	Resp	Lower	Upper
130	100		
95	94.7	0.0	202.4

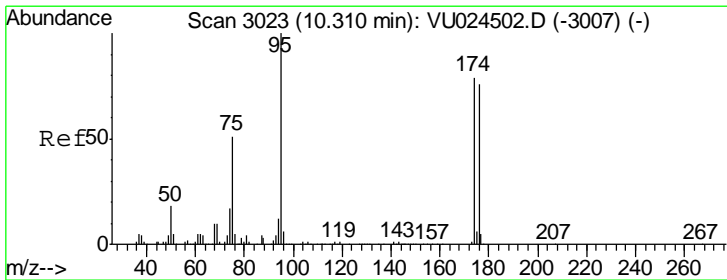
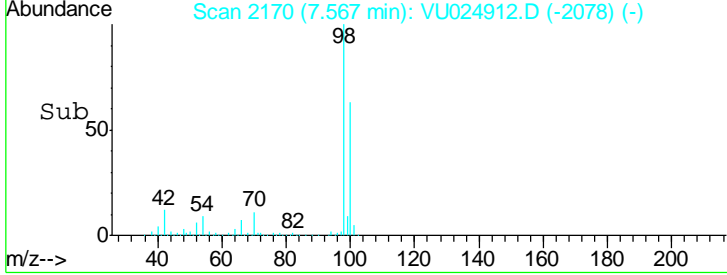
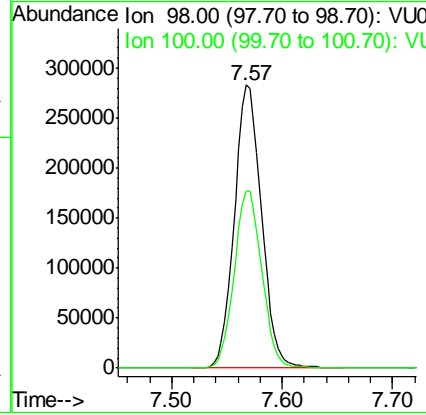
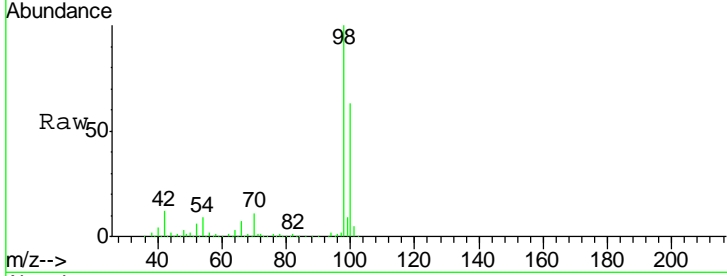




#50
 Toluene-d8
 Concen: 47.80 ug/l
 RT: 7.57 min Scan# 2170
 Delta R.T. -0.00 min
 Lab File: VU024912.D
 Acq: 26 Jun 2018 06:39

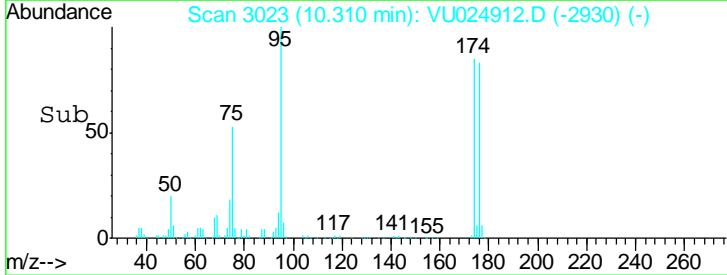
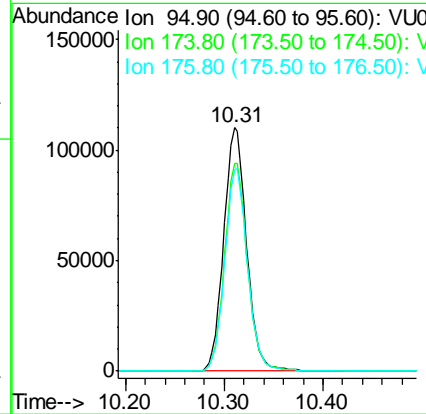
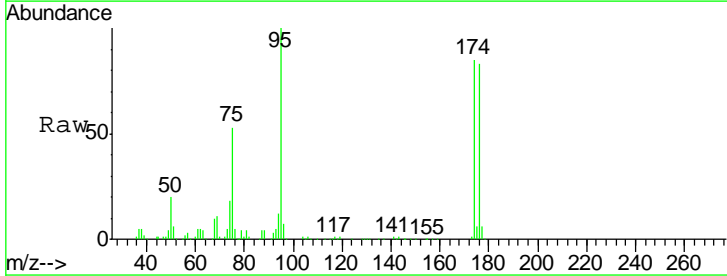
Instrument :
 MSVOA_U
ClientSampled :
 WP021SB474-29-31-180620ME

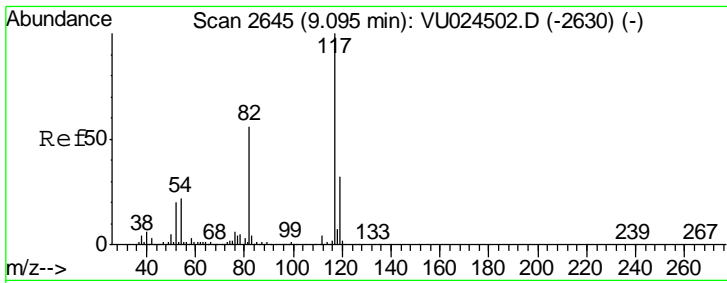
Tgt Ion	Resp	Lower	Upper
98	484490		
100	63.6	51.1	76.7



#62
 4-Bromofluorobenzene
 Concen: 44.65 ug/l
 RT: 10.31 min Scan# 3023
 Delta R.T. -0.00 min
 Lab File: VU024912.D
 Acq: 26 Jun 2018 06:39

Tgt Ion	Resp	Lower	Upper
95	179671		
174	85.2	0.0	165.8
176	82.6	0.0	159.4

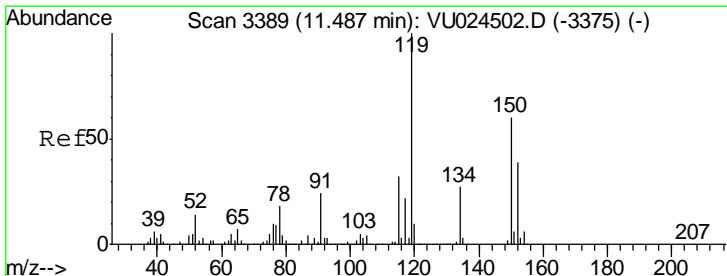
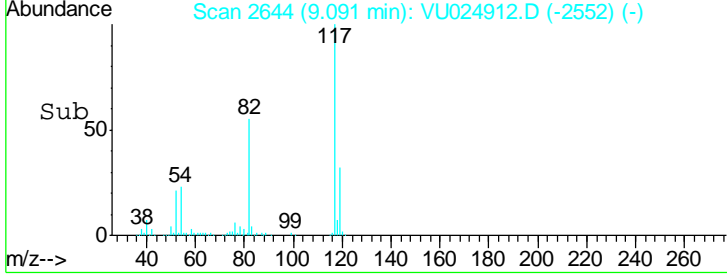
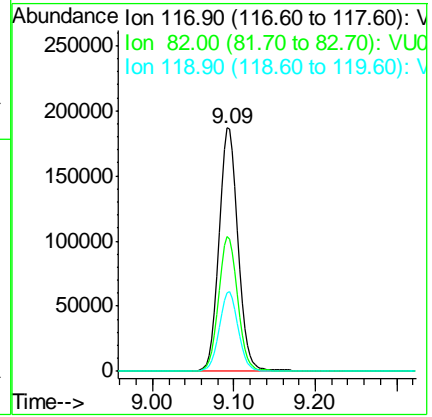
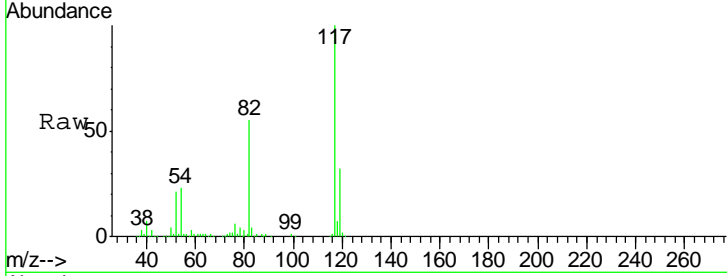




#63
 Chlorobenzene-d5
 Concen: 50.00 ug/l
 RT: 9.09 min Scan# 2644
 Delta R.T. -0.00 min
 Lab File: VU024912.D
 Acq: 26 Jun 2018 06:39

Instrument : MSVOA_U
 ClientSampled : WP021SB474-29-31-180620ME

Tgt Ion	Resp	Lower	Upper
117	310703		
82	55.5	44.3	66.5
119	32.3	25.4	38.2



#72
 1,4-Dichlorobenzene-d4
 Concen: 50.00 ug/l
 RT: 11.49 min Scan# 3389
 Delta R.T. -0.00 min
 Lab File: VU024912.D
 Acq: 26 Jun 2018 06:39

Tgt Ion	Resp	Lower	Upper
152	164126		
115	58.1	43.0	129.0
150	157.4	0.0	354.0

