

Data File : VU033049.D
 Acq On : 25 Jun 2019 12:52
 Operator : JC/SP
 Sample : K3478-22DL 5X
 Misc : 5.0mL/MSVOA_U/WATER
 ALS Vial : 13 Sample Multiplier: 1

Instrument :
 MSVOA_U
 ClientSampleId :
 ETF48DL

Quant Time: Jun 26 07:10:47 2019
 Quant Method : Z:\VOASRV\HPCHEM1\MSVOA_U\METHOD\SOMULM061719WMA.M
 Quant Title : VOC Analysis
 QLast Update : Wed Jun 26 07:06:36 2019
 Response via : Initial Calibration

Internal Standards	R.T.	QIon	Response	Conc	Units	Dev(Min)
1) 1,4-Difluorobenzene	5.88	114	185114	50.00	ug/L	0.00
28) Chlorobenzene-d5	9.08	117	184149	50.00	ug/L	0.00
60) 1,4-Dichlorobenzene-d4	11.48	152	87540	50.00	ug/L	0.00

System Monitoring Compounds

4) Vinyl Chloride-d3	1.39	65	57571	45.51	ug/L	0.00
Spiked Amount	50.000	Range	60 - 135	Recovery	=	91.02%
7) Chloroethane-d5	1.67	69	50502	50.05	ug/L	0.00
Spiked Amount	50.000	Range	70 - 130	Recovery	=	100.10%
11) 1,1-Dichloroethene-d2	2.26	63	91009	35.71	ug/L	0.00
Spiked Amount	50.000	Range	60 - 125	Recovery	=	71.42%
21) 2-Butanone-d5	4.17	46	123702	117.48	ug/L	0.00
Spiked Amount	100.000	Range	40 - 130	Recovery	=	117.48%
24) Chloroform-d	4.64	84	127036	51.65	ug/L	0.00
Spiked Amount	50.000	Range	70 - 125	Recovery	=	103.30%
26) 1,2-Dichloroethane-d4	5.30	65	90160	55.04	ug/L	0.00
Spiked Amount	50.000	Range	70 - 125	Recovery	=	110.08%
32) Benzene-d6	5.33	84	243608	50.75	ug/L	0.00
Spiked Amount	50.000	Range	70 - 125	Recovery	=	101.50%
36) 1,2-Dichloropropane-d6	6.32	67	80442	52.60	ug/L	0.00
Spiked Amount	50.000	Range	70 - 120	Recovery	=	105.20%
41) Toluene-d8	7.56	98	218860	48.68	ug/L	0.00
Spiked Amount	50.000	Range	80 - 120	Recovery	=	97.36%
43) trans-1,3-Dichloropropene-	7.85	79	37845	47.58	ug/L	0.00
Spiked Amount	50.000	Range	60 - 125	Recovery	=	95.16%
47) 2-Hexanone-d5	8.31	63	71141	99.63	ug/L	0.00
Spiked Amount	100.000	Range	45 - 130	Recovery	=	99.63%
57) 1,1,2,2-Tetrachloroethane-	10.42	84	117405	49.66	ug/L	0.00
Spiked Amount	50.000	Range	65 - 120	Recovery	=	99.32%
64) 1,2-Dichlorobenzene-d4	11.85	152	87243	51.50	ug/L	0.00
Spiked Amount	50.000	Range	80 - 120	Recovery	=	103.00%

Target Compounds

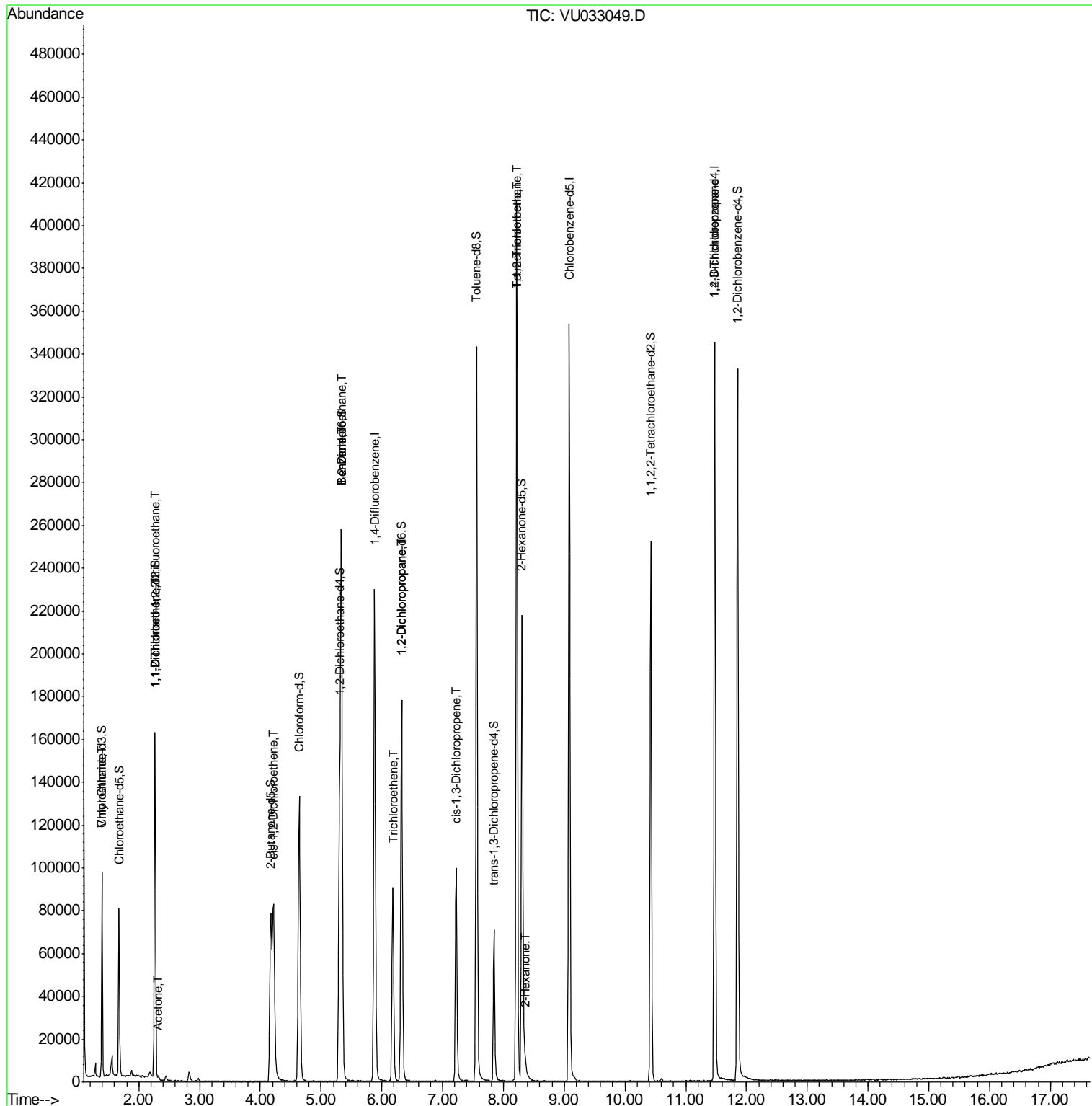
						Qvalue
8) Chloroethane	1.40	64	1001	1.034	ug/L #	1
10) 1,1,2-Trichloro-1,2,2-trif	2.26	101	799	0.646	ug/L #	17
12) 1,1-Dichloroethene	2.26	96	667	0.572	ug/L #	1
13) Acetone	2.32	43	1156	0.795	ug/L	70
20) cis-1,2-Dichloroethene	4.22	96	39247	28.499	ug/L	98
27) 1,2-Dichloroethane	5.34	62	1595	0.781	ug/L #	77
33) Benzene	5.32	78	2105	0.397	ug/L	100
34) Trichloroethene	6.18	95	29793	21.020	ug/L	97
37) 1,2-Dichloropropane	6.32	63	9505	6.532	ug/L #	88
39) cis-1,3-Dichloropropene	7.22	75	2926	1.291	ug/L #	74
45) 1,1,2-Trichloroethane	8.22	97	809	0.597	ug/L #	13
46) Tetrachloroethene	8.22	164	86604	74.566	ug/L	97
48) 2-Hexanone	8.36	43	4022	1.962	ug/L #	85
59) 1,2,3-Trichloropropane	11.48	75	11492	5.918	ug/L #	88

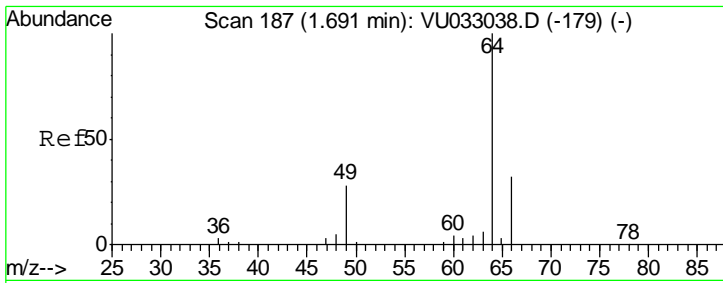
(#) = qualifier out of range (m) = manual integration (+) = signals summed

Data File : VU033049.D
Acq On : 25 Jun 2019 12:52
Operator : JC/SP
Sample : K3478-22DL 5X
Misc : 5.0mL/MSVOA_U/WATER
ALS Vial : 13 Sample Multiplier: 1

Instrument :
MSVOA_U
Client Sampled :
ETF48DL

Quant Time: Jun 26 07:10:47 2019
Quant Method : Z:\VOASRV\HPCHEM1\MSVOA_U\METHOD\SOMULM061719WMA.M
Quant Title : VOC Analysis
QLast Update : Wed Jun 26 07:06:36 2019
Response via : Initial Calibration

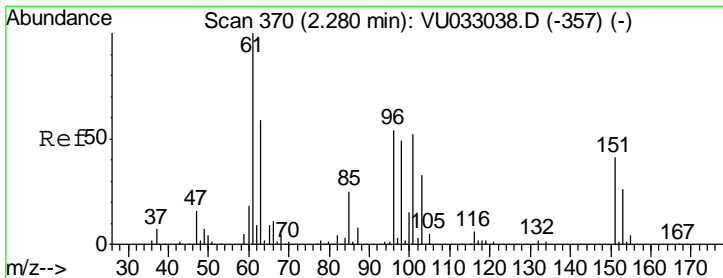
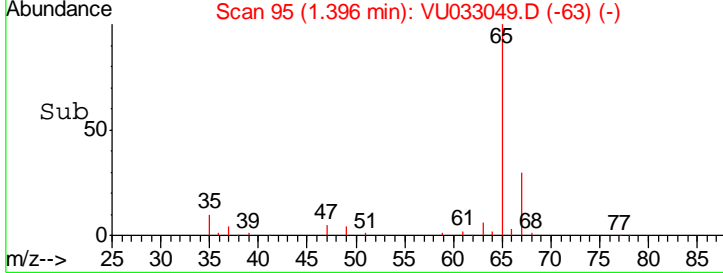
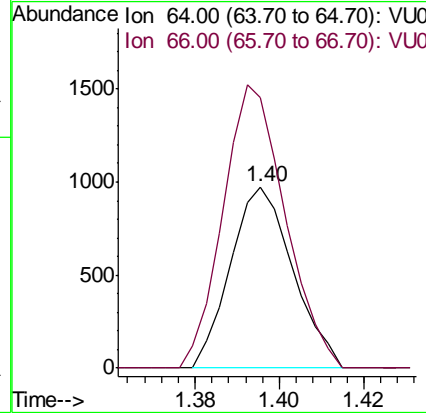
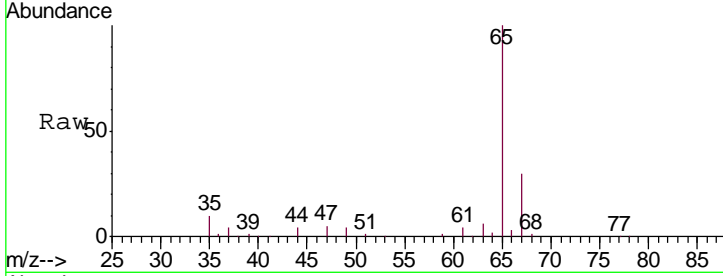




#8
 Chloroethane
 Concen: 1.034 ug/L
 RT: 1.40 min Scan# 95
 Delta R.T. -0.30 min
 Lab File: VU033049.D
 Acq: 25 Jun 2019 12:52

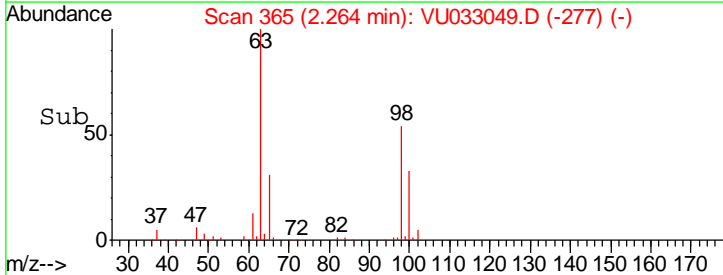
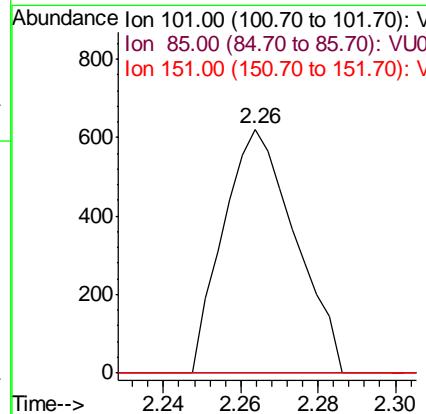
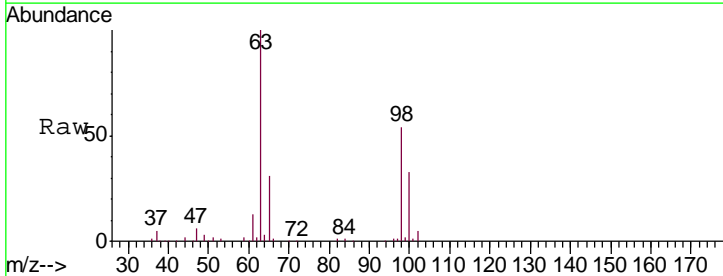
Instrument : MSVOA_U
 ClientSampled : ETF48DL

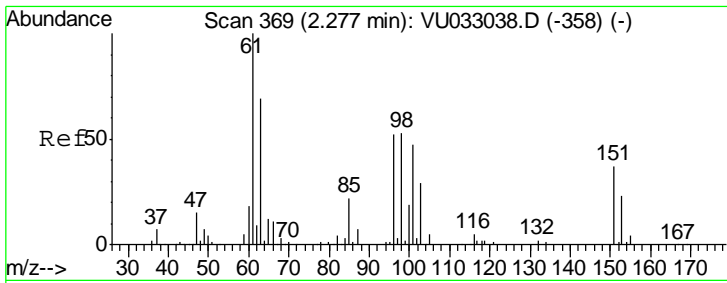
Tgt Ion: 64 Resp: 1001
 Ion Ratio Lower Upper
 64 100
 66 148.9 22.5 41.7#



#10
 1,1,2-Trichloro-1,2,2-trifluoroethane
 Concen: 0.646 ug/L
 RT: 2.26 min Scan# 365
 Delta R.T. -0.02 min
 Lab File: VU033049.D
 Acq: 25 Jun 2019 12:52

Tgt Ion: 101 Resp: 799
 Ion Ratio Lower Upper
 101 100
 85 0.0 36.8 55.2#
 151 0.0 63.6 95.4#

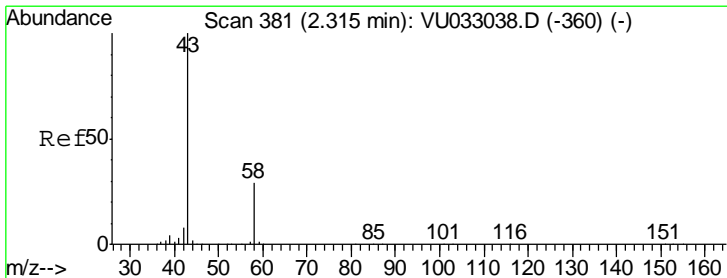
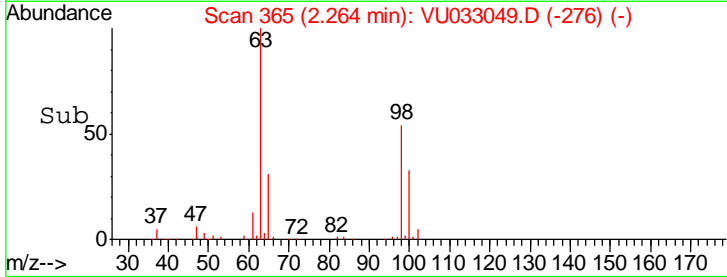
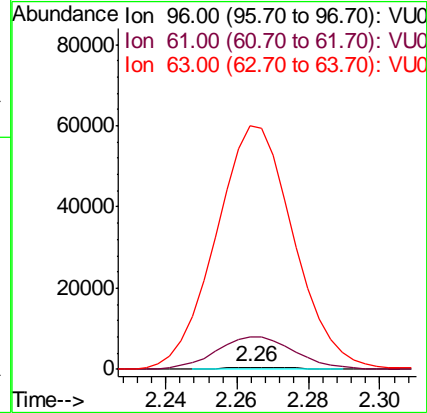
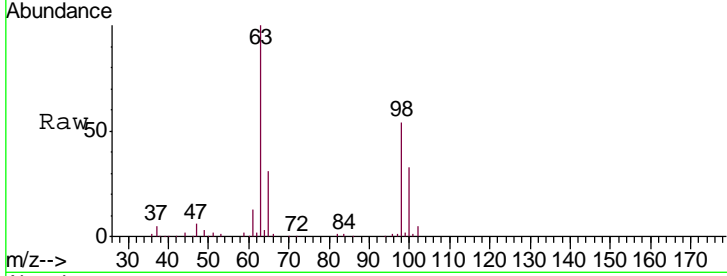




#12
 1,1-Dichloroethene
 Concen: 0.572 ug/L
 RT: 2.26 min Scan# 365
 Delta R.T. -0.01 min
 Lab File: VU033049.D
 Acq: 25 Jun 2019 12:52

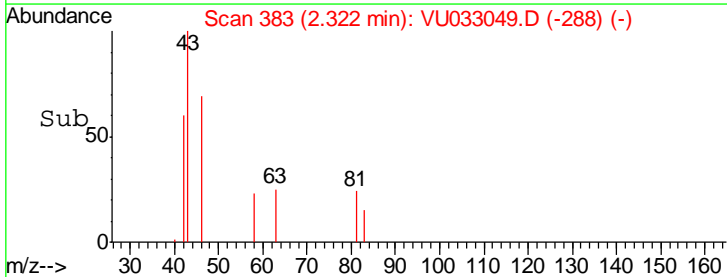
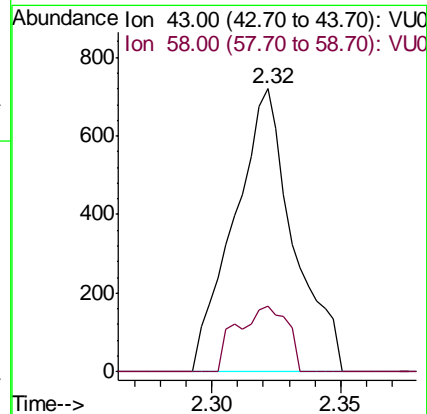
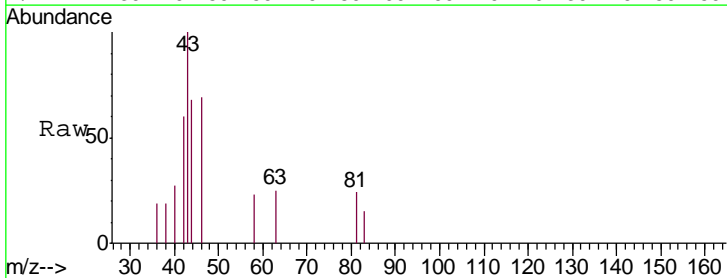
Instrument :
 MSVOA_U
 ClientSampled :
 ETF48DL

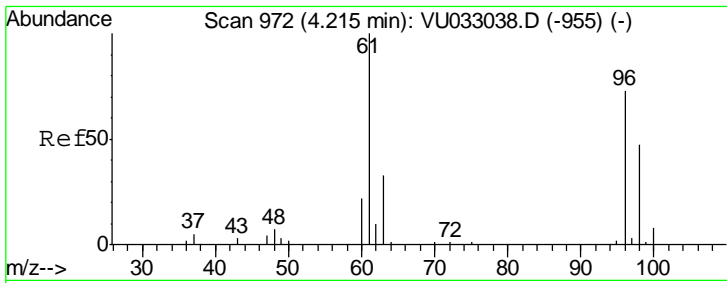
Tgt Ion: 96 Resp: 667
 Ion Ratio Lower Upper
 96 100
 61 1865.7 131.0 243.4#
 63 13885.2 101.0 187.6#



#13
 Acetone
 Concen: 0.795 ug/L
 RT: 2.32 min Scan# 383
 Delta R.T. 0.01 min
 Lab File: VU033049.D
 Acq: 25 Jun 2019 12:52

Tgt Ion: 43 Resp: 1156
 Ion Ratio Lower Upper
 43 100
 58 14.1 0.0 60.6

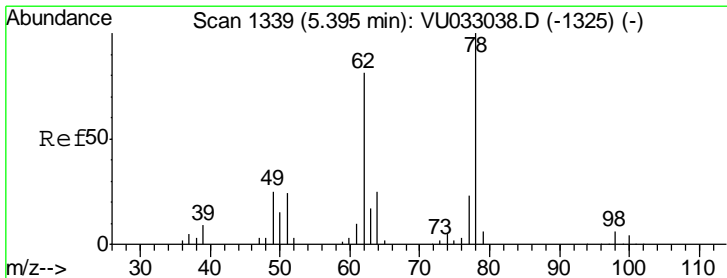
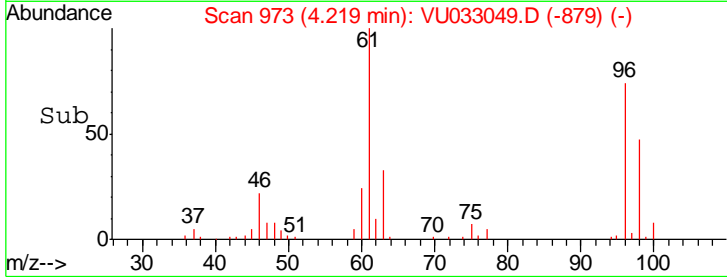
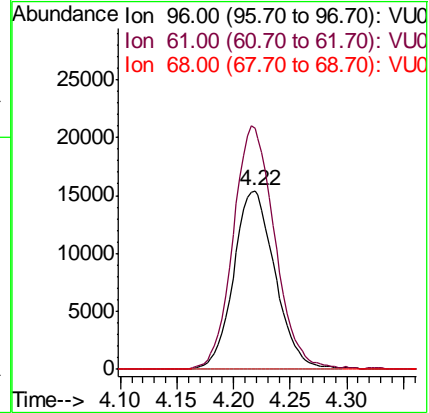
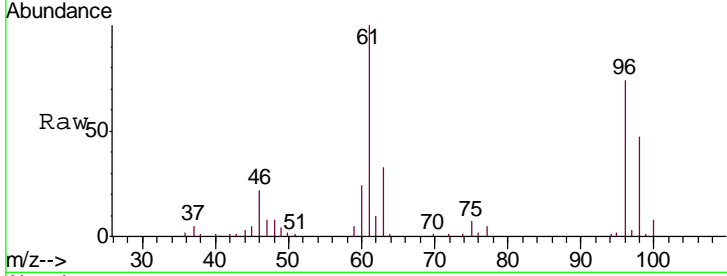




#20
 cis-1,2-Dichloroethene
 Concen: 28.499 ug/L
 RT: 4.22 min Scan# 973
 Delta R.T. 0.00 min
 Lab File: VU033049.D
 Acq: 25 Jun 2019 12:52

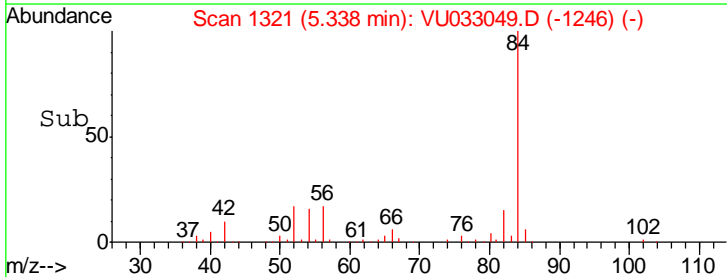
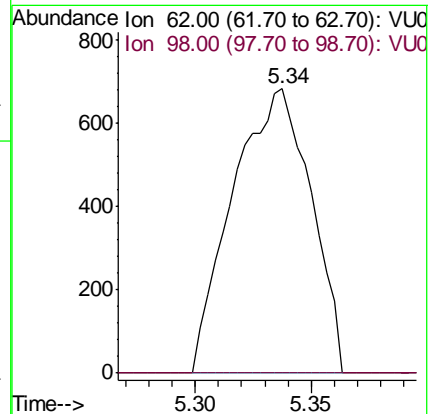
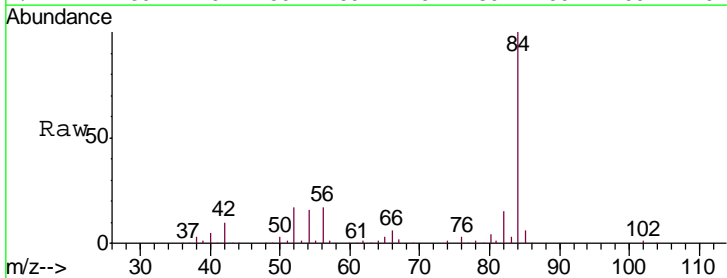
Instrument :
 MSVOA_U
 ClientSampled :
 ETF48DL

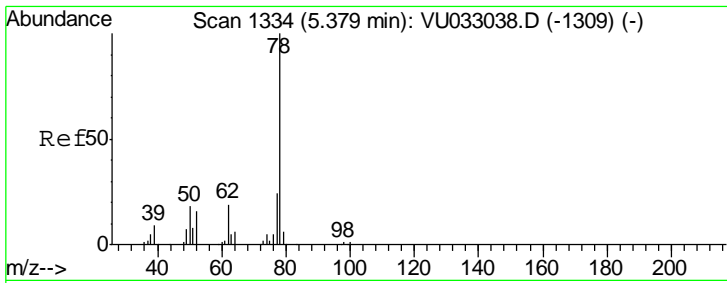
Tgt Ion	Resp	Lower	Upper
96	39247		
61	134.7	92.4	171.6
68	0.0	0.0	0.0



#27
 1,2-Dichloroethane
 Concen: 0.781 ug/L
 RT: 5.34 min Scan# 1321
 Delta R.T. -0.06 min
 Lab File: VU033049.D
 Acq: 25 Jun 2019 12:52

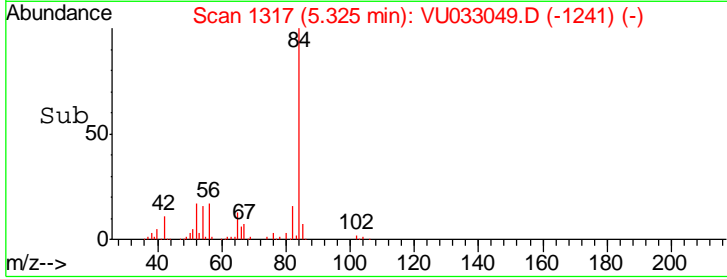
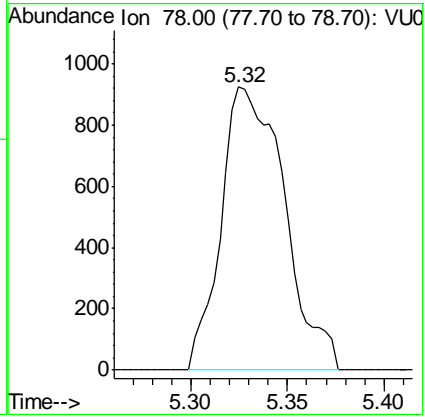
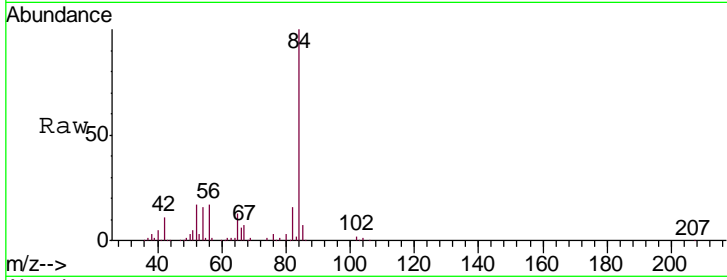
Tgt Ion	Resp	Lower	Upper
62	1595		
98	0.0	6.6	10.0#





#33
 Benzene
 Concen: 0.397 ug/L
 RT: 5.32 min Scan# 1317
 Delta R.T. -0.05 min
 Lab File: VU033049.D
 Acq: 25 Jun 2019 12:52
 Tgt Ion: 78 Resp: 2105

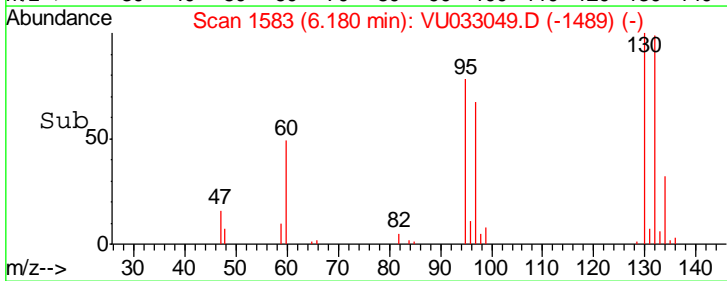
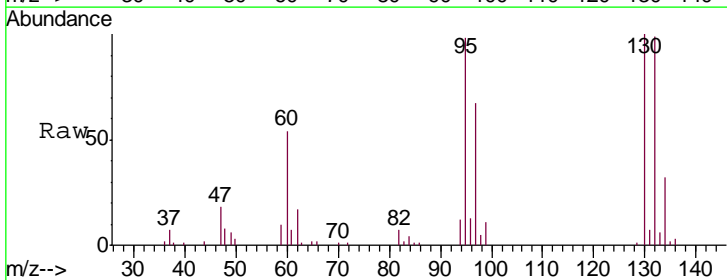
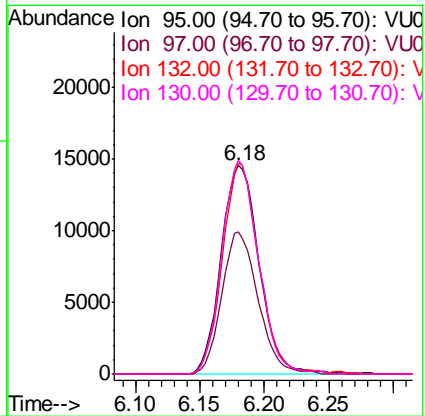
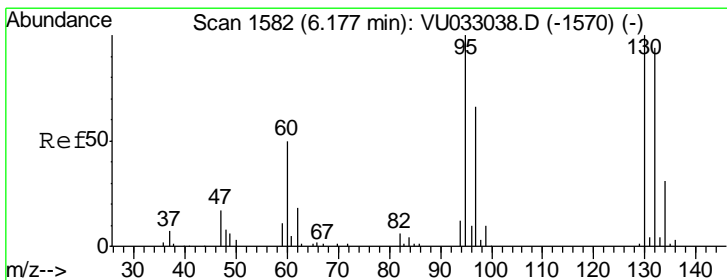
Instrument :
 MSVOA_U
 ClientSampled :
 ETF48DL

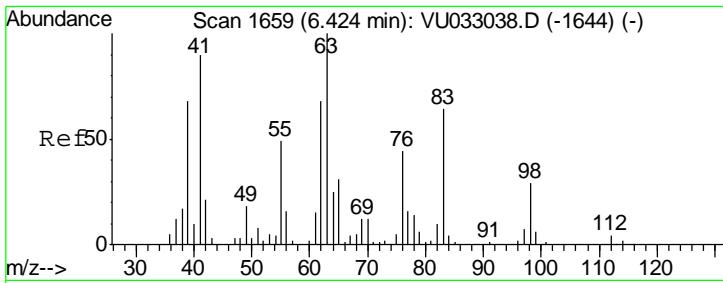


#34
 Trichloroethene
 Concen: 21.020 ug/L
 RT: 6.18 min Scan# 1583
 Delta R.T. 0.00 min
 Lab File: VU033049.D
 Acq: 25 Jun 2019 12:52

Tgt Ion: 95 Resp: 29793

Ion	Ratio	Lower	Upper
95	100		
97	68.5	45.9	85.3
132	101.5	68.5	127.3
130	102.6	70.8	131.4

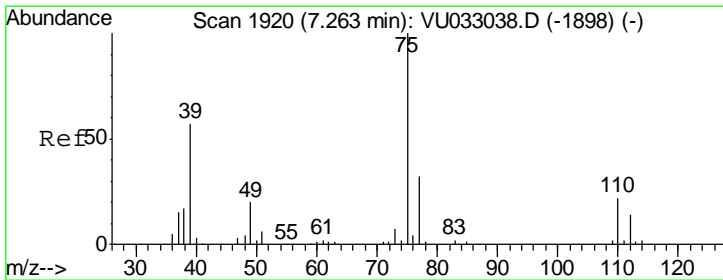
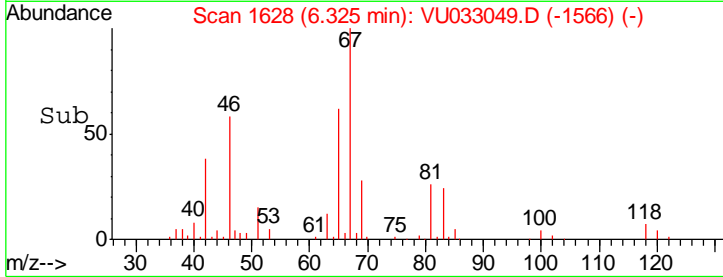
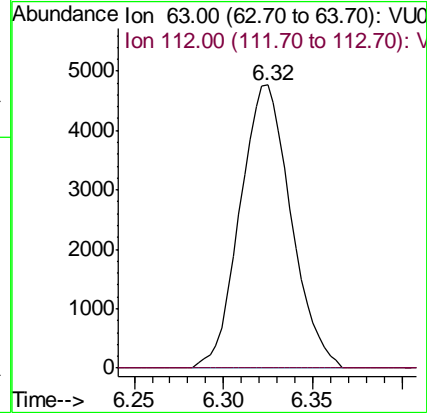
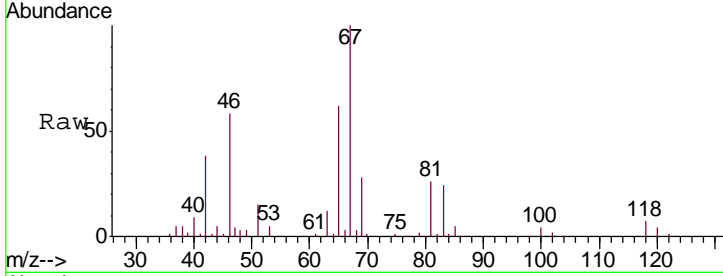




#37
 1,2-Dichloropropane
 Concen: 6.532 ug/L
 RT: 6.32 min Scan# 1628
 Delta R.T. -0.10 min
 Lab File: VU033049.D
 Acq: 25 Jun 2019 12:52

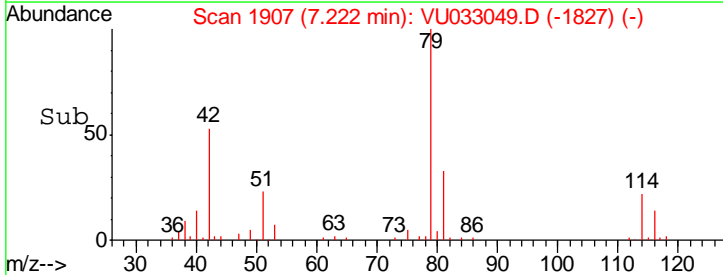
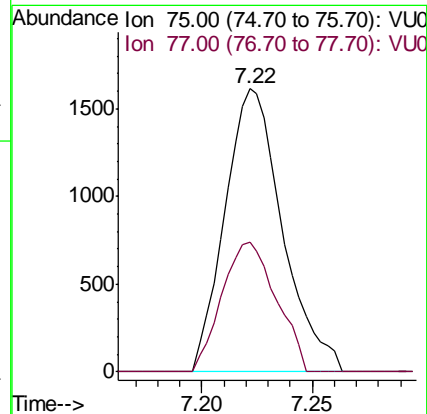
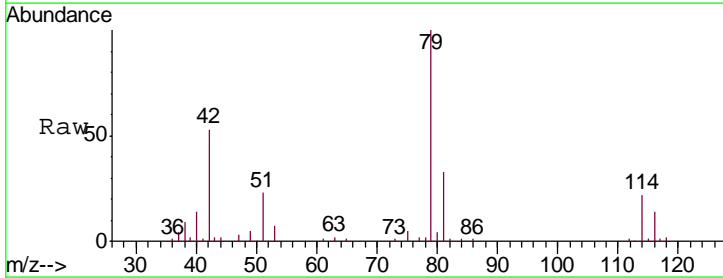
Instrument :
 MSVOA_U
 ClientSampled :
 ETF48DL

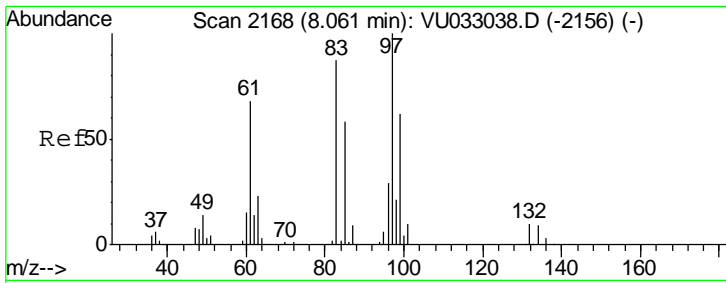
Tgt Ion: 63 Resp: 9505
 Ion Ratio Lower Upper
 63 100
 112 0.0 3.0 4.6#



#39
 cis-1,3-Dichloropropene
 Concen: 1.291 ug/L
 RT: 7.22 min Scan# 1907
 Delta R.T. -0.04 min
 Lab File: VU033049.D
 Acq: 25 Jun 2019 12:52

Tgt Ion: 75 Resp: 2926
 Ion Ratio Lower Upper
 75 100
 77 45.7 21.9 40.7#

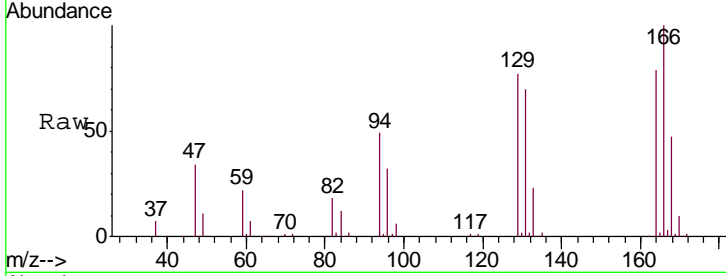




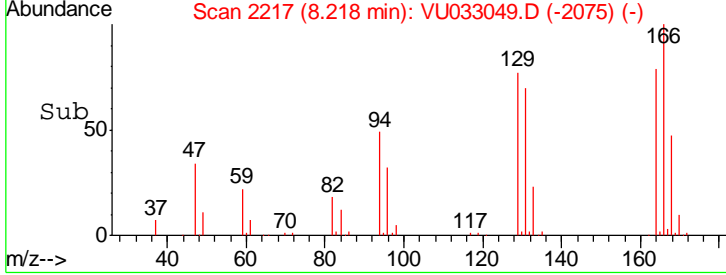
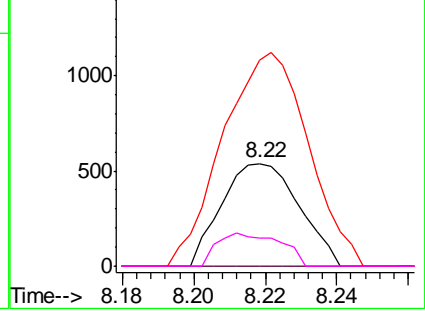
#45
 1,1,2-Trichloroethane
 Concen: 0.597 ug/L
 RT: 8.22 min Scan# 2217
 Delta R.T. 0.16 min
 Lab File: VU033049.D
 Acq: 25 Jun 2019 12:52

Instrument :
 MSVOA_U
 ClientSampled :
 ETF48DL

Tgt Ion	Resp	Lower	Upper
97	100		
99	0.0	43.1	80.1#
83	201.7	61.4	114.0#
85	27.9	39.2	72.8#



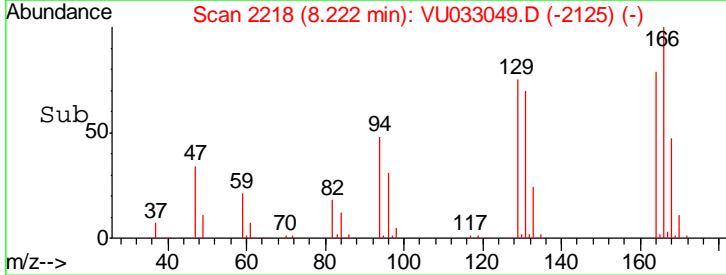
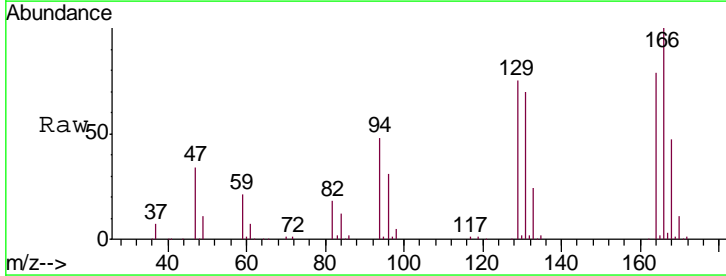
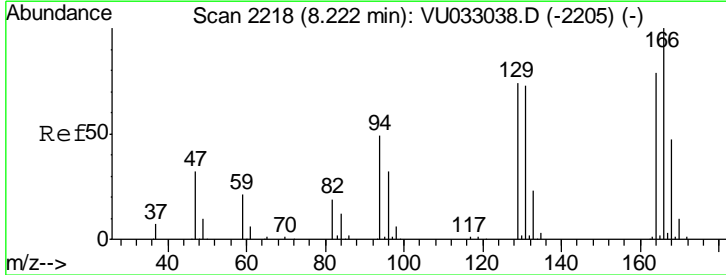
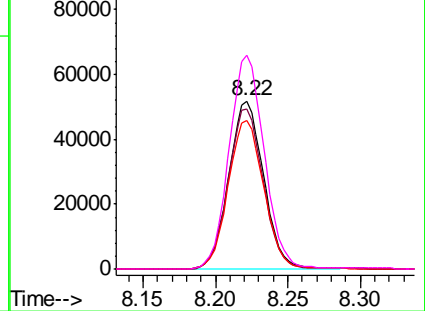
Abundance Ion 97.00 (96.70 to 97.70): VU0
 Ion 99.00 (98.70 to 99.70): VU0
 Ion 83.00 (82.70 to 83.70): VU0
 Ion 85.00 (84.70 to 85.70): VU0

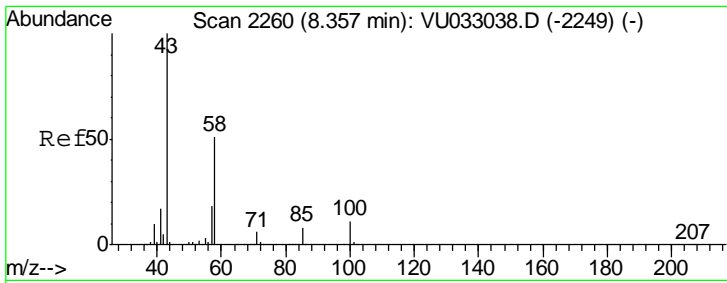


#46
 Tetrachloroethene
 Concen: 74.566 ug/L
 RT: 8.22 min Scan# 2218
 Delta R.T. -0.00 min
 Lab File: VU033049.D
 Acq: 25 Jun 2019 12:52

Tgt Ion	Resp	Lower	Upper
164	100		
129	95.1	64.8	120.3
131	88.5	64.5	119.7
166	127.1	91.3	169.6

Abundance Ion 164.00 (163.70 to 164.70): V
 Ion 129.00 (128.70 to 129.70): V
 Ion 131.00 (130.70 to 131.70): V
 Ion 166.00 (165.70 to 166.70): V



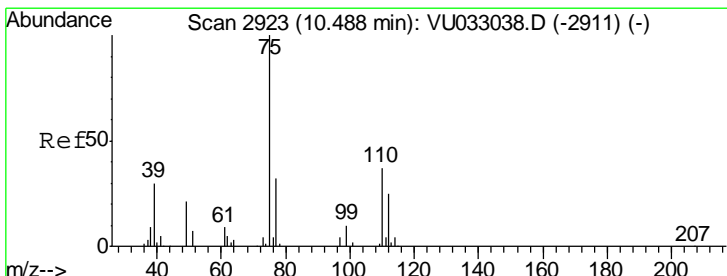
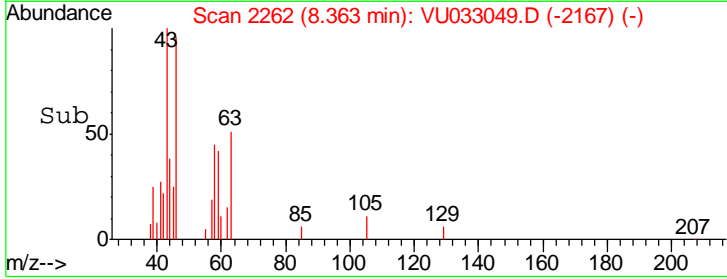
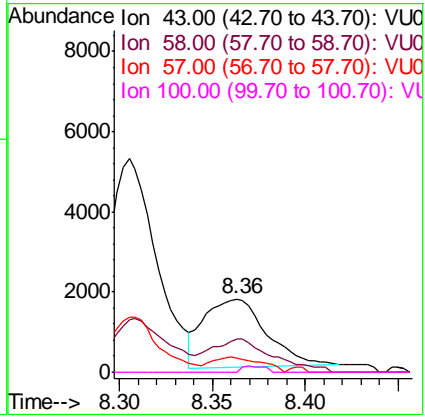
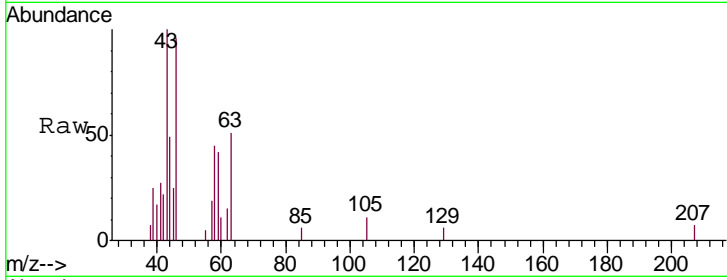


#48
 2-Hexanone
 Concen: 1.962 ug/L
 RT: 8.36 min Scan# 2262
 Delta R.T. 0.01 min
 Lab File: VU033049.D
 Acq: 25 Jun 2019 12:52

Instrument :
 MSVOA_U
ClientSampled :
 ETF48DL

Tgt Ion: 43 Resp: 4022

Ion	Ratio	Lower	Upper
43	100		
58	37.3	40.2	60.2#
57	17.3	14.2	21.4
100	3.2	8.4	12.6#



#59
 1,2,3-Trichloropropane
 Concen: 5.918 ug/L
 RT: 11.48 min Scan# 3230
 Delta R.T. 0.99 min
 Lab File: VU033049.D
 Acq: 25 Jun 2019 12:52

Tgt Ion: 75 Resp: 11492

Ion	Ratio	Lower	Upper
75	100		
77	38.5	25.5	38.3#

