

Data Path : Z:\VOASRV\HPCHEM1\MSVOA U\DATA\VU062520\
 Data File : VU039144.D
 Acq On : 26 Jun 2020 03:45
 Operator : SY/MD
 Sample : L3104-10 40X
 Misc : 25.0mL/MSVOA U/WATER
 ALS Vial : 1 Sample Multiplier: 1

Instrument :
 MSVOA_U
 ClientSampleId :
 F9Q61

Quant Time: Jun 26 04:23:36 2020
 Quant Method : Z:\VOASRV\HPCHEM1\MSVOA_U\METHOD\SOMUTR062320WMA.M
 Quant Title : TRACE VOA SOM01.0
 QLast Update : Fri Jun 26 04:20:15 2020
 Response via : Initial Calibration

Internal Standards	R.T.	QIon	Response	Conc	Units	Dev(Min)
1) 1,4-Difluorobenzene	6.28	114	218682	5.00	ug/L	0.00
28) Chlorobenzene-d5	9.44	117	216400	5.00	ug/L	0.00
60) 1,4-Dichlorobenzene-d4	11.82	152	88640	5.00	ug/L	0.00

System Monitoring Compounds

4) Vinyl Chloride-d3	1.61	65	71128	4.44	ug/L	0.00
Spiked Amount	5.000	Range	40 - 130	Recovery	=	88.80%
7) Chloroethane-d5	1.93	69	72607	5.49	ug/L	0.00
Spiked Amount	5.000	Range	65 - 130	Recovery	=	109.80%
11) 1,1-Dichloroethene-d2	2.59	63	107688	3.50	ug/L	0.00
Spiked Amount	5.000	Range	60 - 125	Recovery	=	70.00%
20) 2-Butanone-d5	4.68	46	409477	70.85	ug/L	0.00
Spiked Amount	50.000	Range	40 - 130	Recovery	=	141.70%#
24) Chloroform-d	5.10	84	179311	5.69	ug/L	0.00
Spiked Amount	5.000	Range	70 - 125	Recovery	=	113.80%
26) 1,2-Dichloroethane-d4	5.74	65	119278	6.16	ug/L	0.00
Spiked Amount	5.000	Range	70 - 130	Recovery	=	123.20%
32) Benzene-d6	5.76	84	322524	5.37	ug/L	0.00
Spiked Amount	5.000	Range	70 - 125	Recovery	=	107.40%
36) 1,2-Dichloropropane-d6	6.72	67	114182	5.66	ug/L	0.00
Spiked Amount	5.000	Range	60 - 140	Recovery	=	113.20%
41) Toluene-d8	7.92	98	233443	4.65	ug/L	0.00
Spiked Amount	5.000	Range	70 - 130	Recovery	=	93.00%
43) trans-1,3-Dichloropropene-	8.20	79	46106	5.26	ug/L	0.00
Spiked Amount	5.000	Range	55 - 130	Recovery	=	105.20%
46) 2-Hexanone-d5	8.66	63	298834	66.07	ug/L	0.00
Spiked Amount	50.000	Range	45 - 130	Recovery	=	132.14%#
57) 1,1,2,2-Tetrachloroethane-	10.77	84	108012	5.76	ug/L	0.00
Spiked Amount	5.000	Range	65 - 120	Recovery	=	115.20%
64) 1,2-Dichlorobenzene-d4	12.20	152	95180	5.76	ug/L	0.00
Spiked Amount	5.000	Range	80 - 120	Recovery	=	115.20%

Target Compounds

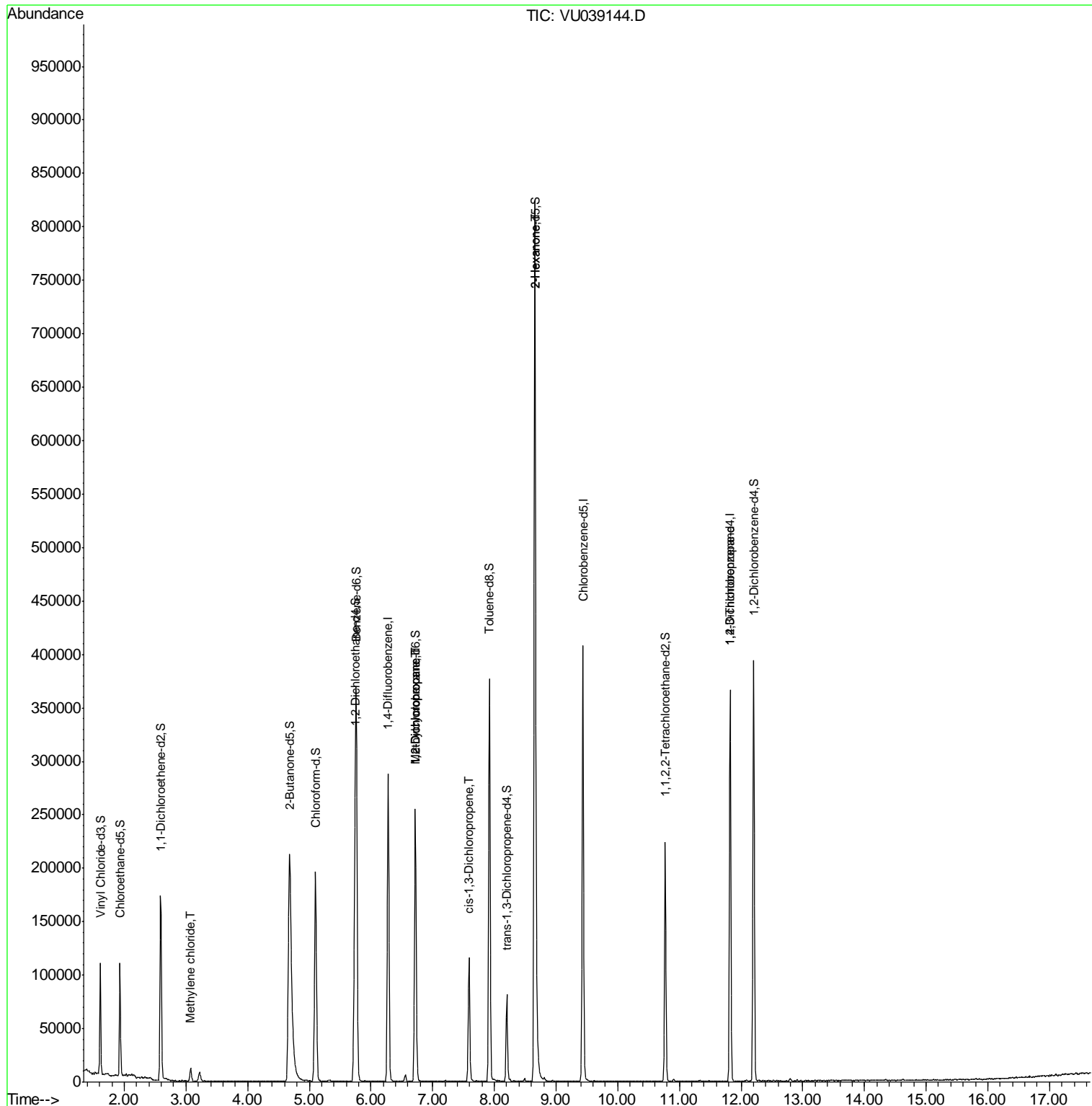
Target Compounds	R.T.	QIon	Response	Conc	Units	Ovalue
16) Methylene chloride	3.08	84	5363	0.287	ug/L	89
35) Methylcyclohexane	6.72	83	28033	1.149	ug/L #	17
37) 1,2-Dichloropropane	6.72	63	13431	0.729	ug/L #	88
39) cis-1,3-Dichloropropene	7.59	75	3222	0.126	ug/L #	59
48) 2-Hexanone	8.66	43	37217	3.693	ug/L #	70
59) 1,2,3-Trichloropropane	11.82	75	12590	0.907	ug/L	96

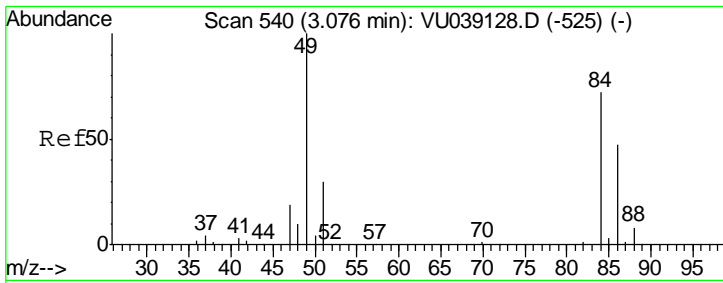
(#) = qualifier out of range (m) = manual integration (+) = signals summed

Data Path : Z:\VOASRV\HPCHEM1\MSVOA U\DATA\VU062520\
 Data File : VU039144.D
 Acq On : 26 Jun 2020 03:45
 Operator : SY/MD
 Sample : L3104-10 40X
 Misc : 25.0mL/MSVOA U/WATER
 ALS Vial : 1 Sample Multiplier: 1

Instrument :
 MSVOA_U
 ClientSampled :
 F9Q61

Quant Time: Jun 26 04:23:36 2020
 Quant Method : Z:\VOASRV\HPCHEM1\MSVOA_U\METHOD\SOMUTR062320WMA.M
 Quant Title : TRACE VOA SOM01.0
 QLast Update : Fri Jun 26 04:20:15 2020
 Response via : Initial Calibration

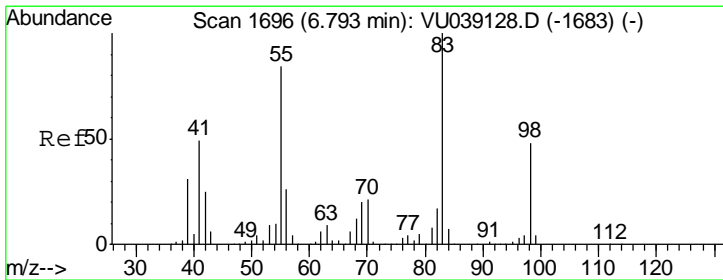
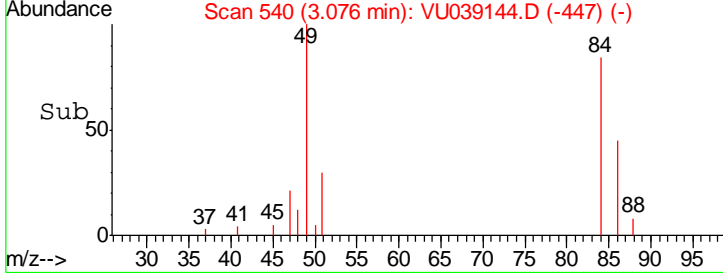
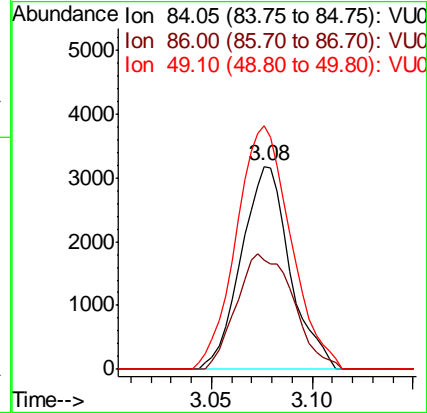
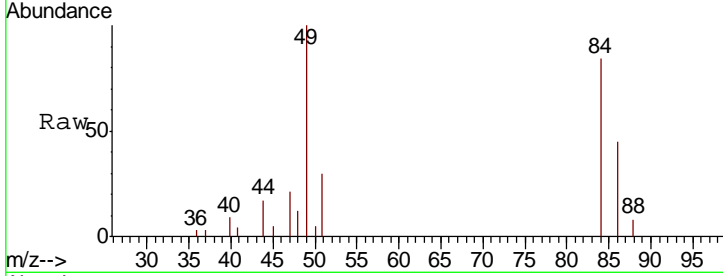




#16
 Methylene chloride
 Concen: 0.287 ug/L
 RT: 3.08 min Scan# 540
 Delta R.T. -0.00 min
 Lab File: VU039144.D
 Acq: 26 Jun 2020 03:45

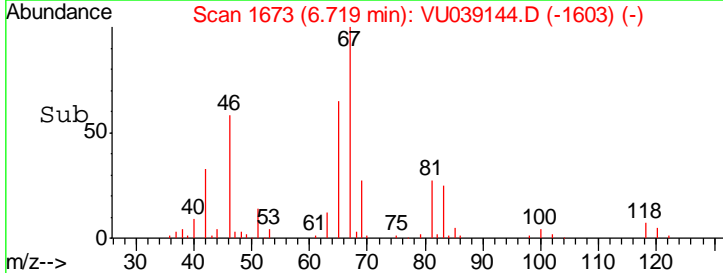
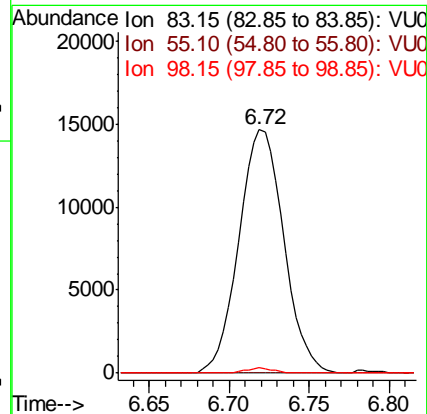
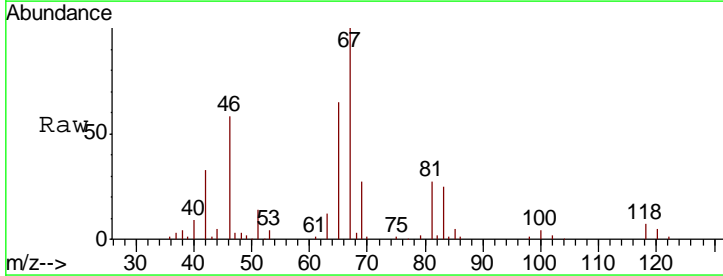
Instrument :
 MSVOA_U
 ClientSampled :
 F9Q61

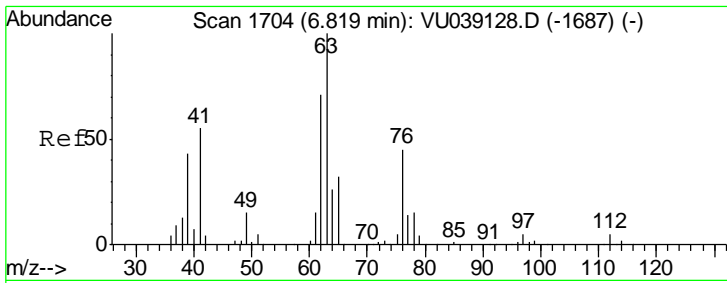
Tgt Ion	Resp	Lower	Upper
84	100		
86	53.7	44.1	81.9
49	119.7	93.1	172.9



#35
 Methylcyclohexane
 Concen: 1.149 ug/L
 RT: 6.72 min Scan# 1673
 Delta R.T. -0.07 min
 Lab File: VU039144.D
 Acq: 26 Jun 2020 03:45

Tgt Ion	Resp	Lower	Upper
83	100		
55	0.0	65.5	98.3#
98	1.2	36.5	54.7#

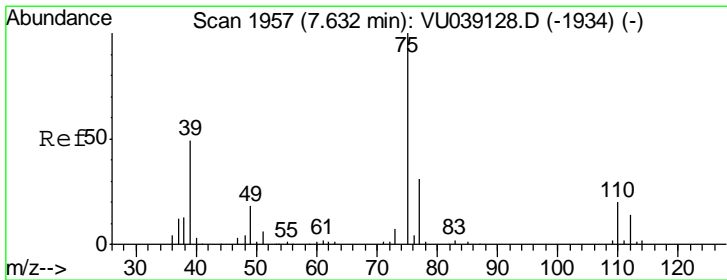
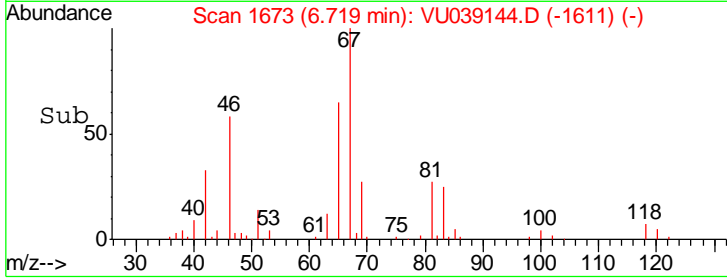
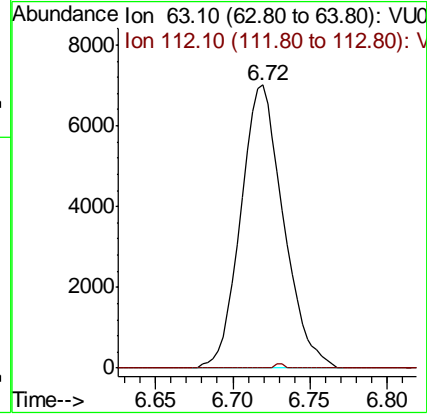
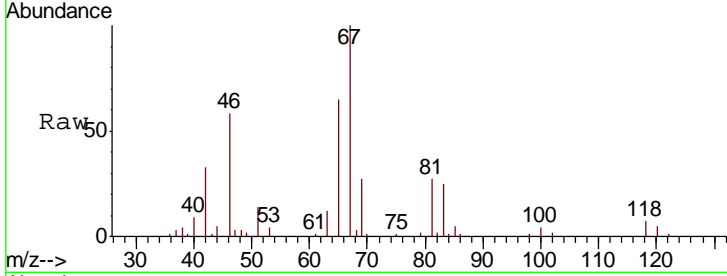




#37
 1,2-Dichloropropane
 Concen: 0.729 ug/L
 RT: 6.72 min Scan# 1673
 Delta R.T. -0.10 min
 Lab File: VU039144.D
 Acq: 26 Jun 2020 03:45

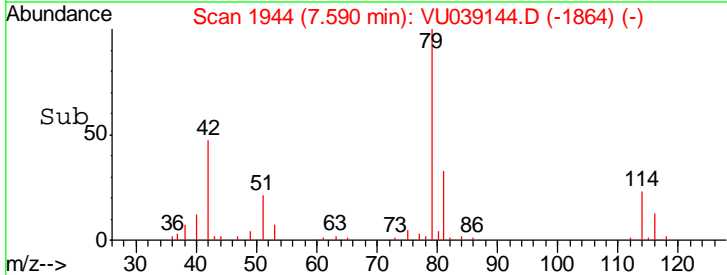
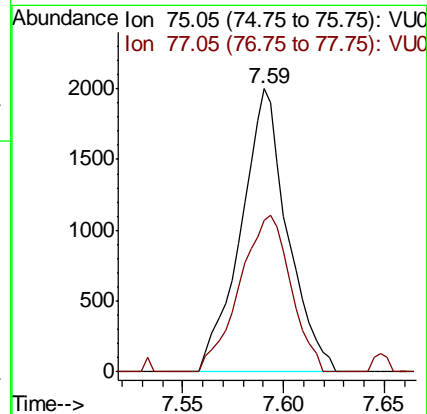
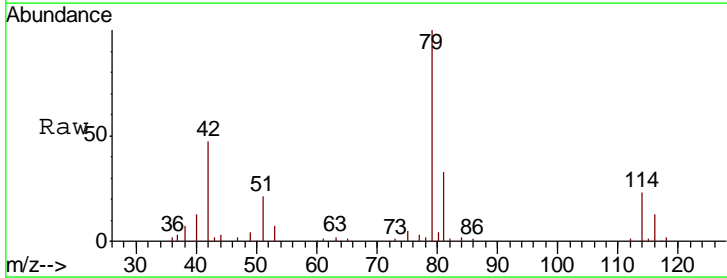
Instrument :
 MSVOA_U
 ClientSampled :
 F9Q61

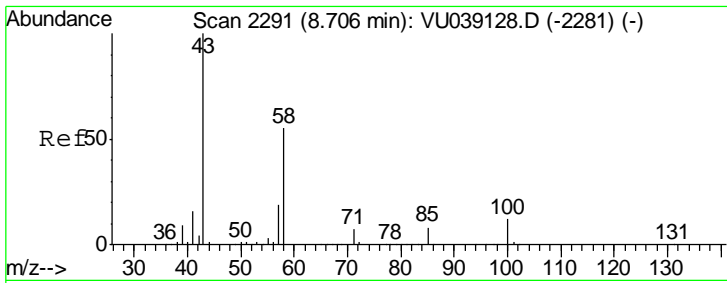
Tgt Ion: 63 Resp: 13431
 Ion Ratio Lower Upper
 63 100
 112 0.3 3.4 5.2#



#39
 cis-1,3-Dichloropropene
 Concen: 0.126 ug/L
 RT: 7.59 min Scan# 1944
 Delta R.T. -0.04 min
 Lab File: VU039144.D
 Acq: 26 Jun 2020 03:45

Tgt Ion: 75 Resp: 3222
 Ion Ratio Lower Upper
 75 100
 77 53.5 21.6 40.0#

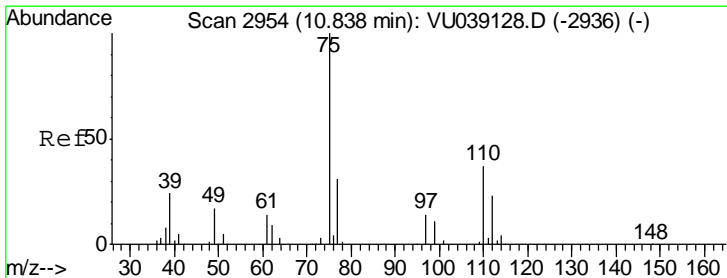
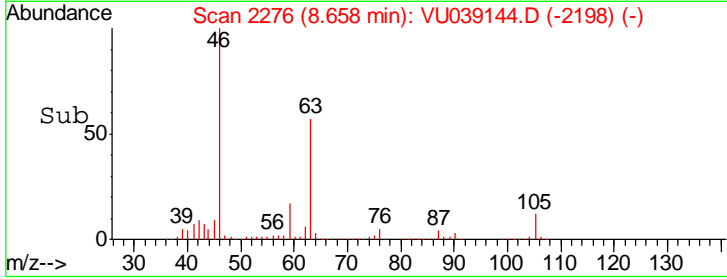
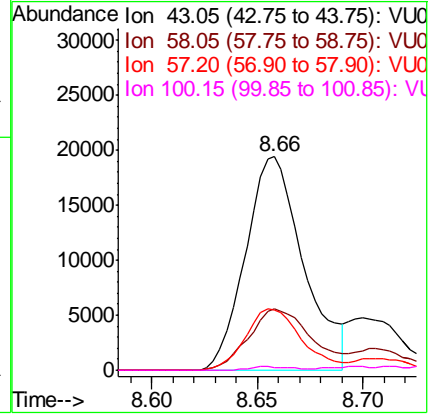
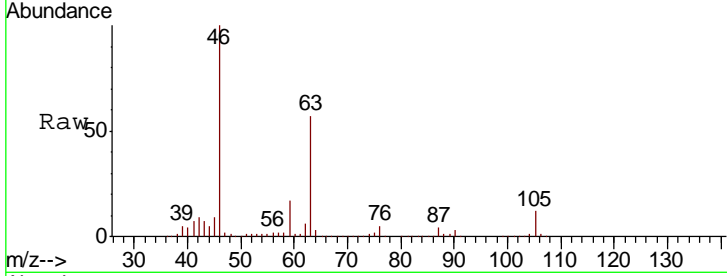




#48
 2-Hexanone
 Concen: 3.693 ug/L
 RT: 8.66 min Scan# 2276
 Delta R.T. -0.05 min
 Lab File: VU039144.D
 Acq: 26 Jun 2020 03:45

Instrument :
 MSVOA_U
 ClientSampled :
 F9Q61

Tgt Ion	Resp	Lower	Upper
43	37217		
58	30.7	44.0	66.0#
57	28.0	15.0	22.6#
100	1.2	9.4	14.2#



#59
 1,2,3-Trichloropropane
 Concen: 0.907 ug/L
 RT: 11.82 min Scan# 3260
 Delta R.T. 0.98 min
 Lab File: VU039144.D
 Acq: 26 Jun 2020 03:45

Tgt Ion	Resp	Lower	Upper
75	12590		
77	35.0	26.2	39.2

