

Data Path : Z:\VOASRV\HPCHEM1\MSVOA U\DATA\VU062520\  
 Data File : VU039150.D  
 Acq On : 26 Jun 2020 06:03  
 Operator : SY/MD  
 Sample : L3104-16 40X  
 Misc : 25.0mL/MSVOA U/WATER  
 ALS Vial : 1 Sample Multiplier: 1

Instrument :  
 MSVOA\_U  
 ClientSampleID :  
 F9Q77

Quant Time: Jun 26 06:34:19 2020  
 Quant Method : Z:\VOASRV\HPCHEM1\MSVOA\_U\METHOD\SOMUTR062320WMA.M  
 Quant Title : TRACE VOA SOM01.0  
 QLast Update : Fri Jun 26 04:20:15 2020  
 Response via : Initial Calibration

Internal Standards	R.T.	QIon	Response	Conc	Units	Dev(Min)
1) 1,4-Difluorobenzene	6.28	114	214449	5.00	ug/L	0.00
28) Chlorobenzene-d5	9.44	117	211652	5.00	ug/L	0.00
60) 1,4-Dichlorobenzene-d4	11.82	152	83399	5.00	ug/L	0.00

System Monitoring Compounds

4) Vinyl Chloride-d3	1.61	65	70234	4.47	ug/L	0.00
Spiked Amount	5.000	Range	40 - 130	Recovery	=	89.40%
7) Chloroethane-d5	1.93	69	70576	5.44	ug/L	0.00
Spiked Amount	5.000	Range	65 - 130	Recovery	=	108.80%
11) 1,1-Dichloroethene-d2	2.59	63	109236	3.62	ug/L	0.00
Spiked Amount	5.000	Range	60 - 125	Recovery	=	72.40%
20) 2-Butanone-d5	4.68	46	389310	68.69	ug/L	0.00
Spiked Amount	50.000	Range	40 - 130	Recovery	=	137.38%#
24) Chloroform-d	5.10	84	175312	5.68	ug/L	0.00
Spiked Amount	5.000	Range	70 - 125	Recovery	=	113.60%
26) 1,2-Dichloroethane-d4	5.74	65	112335	5.91	ug/L	0.00
Spiked Amount	5.000	Range	70 - 130	Recovery	=	118.20%
32) Benzene-d6	5.76	84	319235	5.44	ug/L	0.00
Spiked Amount	5.000	Range	70 - 125	Recovery	=	108.80%
36) 1,2-Dichloropropane-d6	6.72	67	112137	5.68	ug/L	0.00
Spiked Amount	5.000	Range	60 - 140	Recovery	=	113.60%
41) Toluene-d8	7.92	98	236093	4.81	ug/L	0.00
Spiked Amount	5.000	Range	70 - 130	Recovery	=	96.20%
43) trans-1,3-Dichloropropene-	8.20	79	43377	5.06	ug/L	0.00
Spiked Amount	5.000	Range	55 - 130	Recovery	=	101.20%
46) 2-Hexanone-d5	8.66	63	279909	63.27	ug/L	0.00
Spiked Amount	50.000	Range	45 - 130	Recovery	=	126.54%
57) 1,1,2,2-Tetrachloroethane-	10.77	84	104657	5.71	ug/L	0.00
Spiked Amount	5.000	Range	65 - 120	Recovery	=	114.20%
64) 1,2-Dichlorobenzene-d4	12.20	152	97748	6.29	ug/L	0.00
Spiked Amount	5.000	Range	80 - 120	Recovery	=	125.80%#

Target Compounds

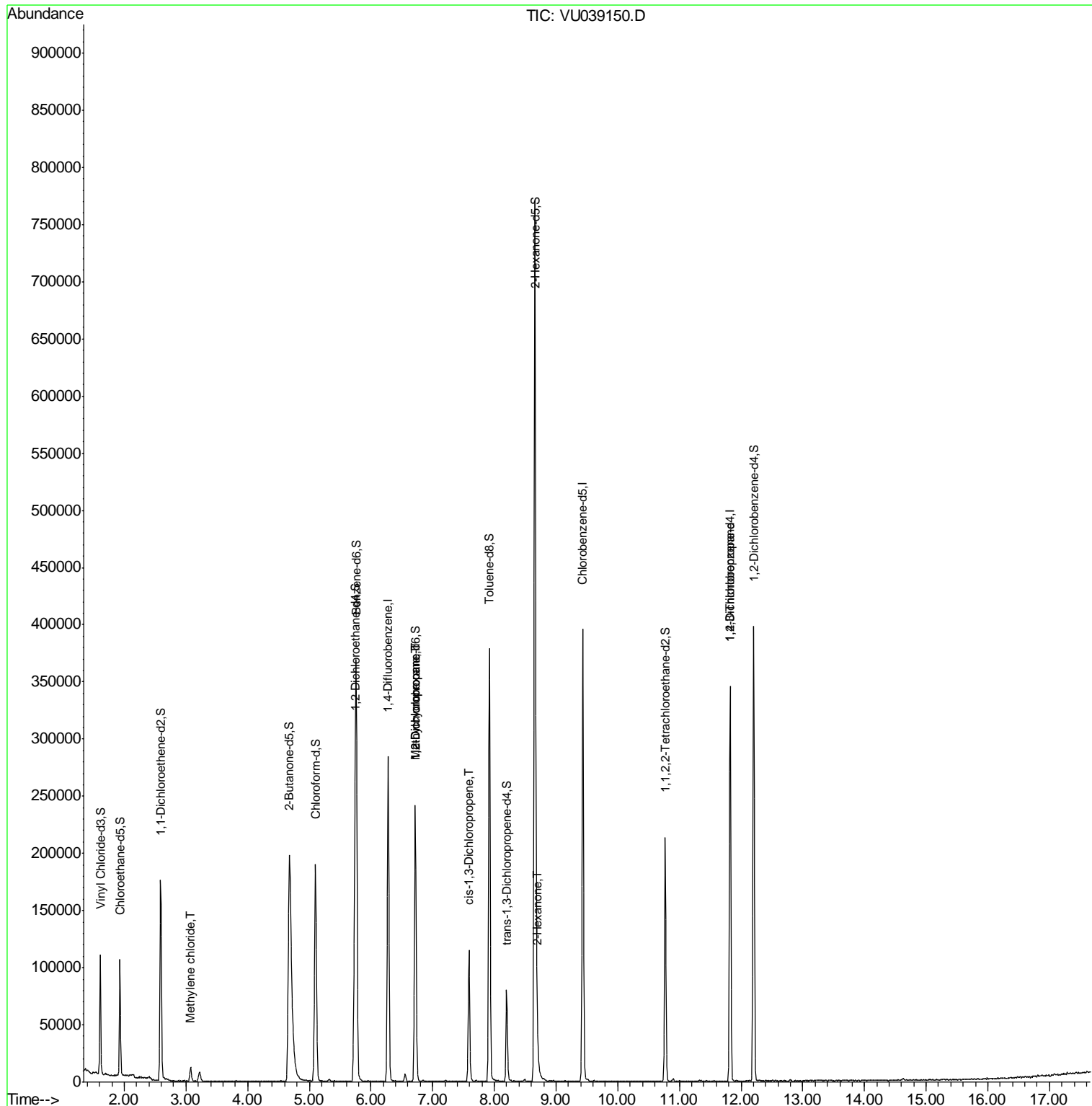
Target Compounds	R.T.	QIon	Response	Conc	Units	Ovalue
16) Methylene chloride	3.08	84	5406	0.295	ug/L	97
35) Methylcyclohexane	6.72	83	25845	1.083	ug/L #	18
37) 1,2-Dichloropropane	6.72	63	12817	0.711	ug/L #	87
39) cis-1,3-Dichloropropene	7.59	75	3308	0.132	ug/L	85
48) 2-Hexanone	8.70	43	9058	0.919	ug/L #	88
59) 1,2,3-Trichloropropane	11.82	75	11814	0.870	ug/L	92

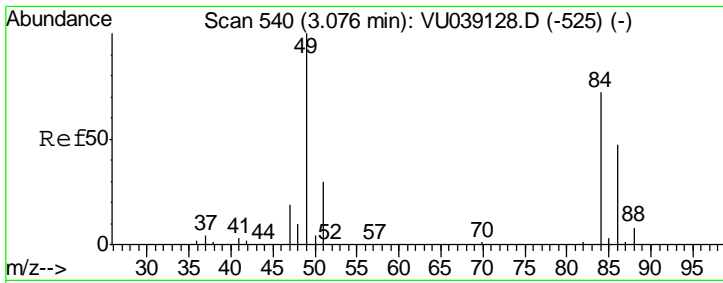
(#) = qualifier out of range (m) = manual integration (+) = signals summed

Data Path : Z:\VOASRV\HPCHEM1\MSVOA U\DATA\VU062520\  
 Data File : VU039150.D  
 Acq On : 26 Jun 2020 06:03  
 Operator : SY/MD  
 Sample : L3104-16 40X  
 Misc : 25.0mL/MSVOA U/WATER  
 ALS Vial : 1 Sample Multiplier: 1

Instrument :  
 MSVOA\_U  
 ClientSampled :  
 F9Q77

Quant Time: Jun 26 06:34:19 2020  
 Quant Method : Z:\VOASRV\HPCHEM1\MSVOA\_U\METHOD\SOMUTR062320WMA.M  
 Quant Title : TRACE VOA SOM01.0  
 QLast Update : Fri Jun 26 04:20:15 2020  
 Response via : Initial Calibration

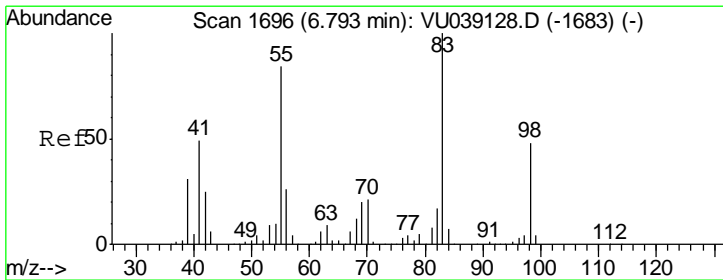
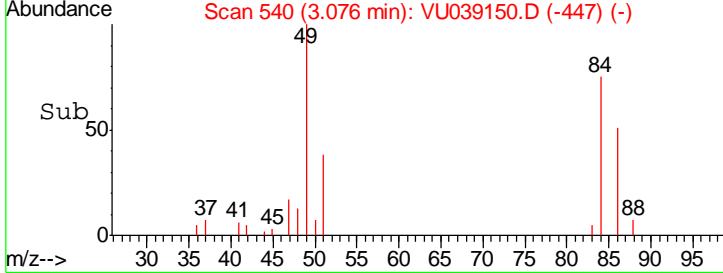
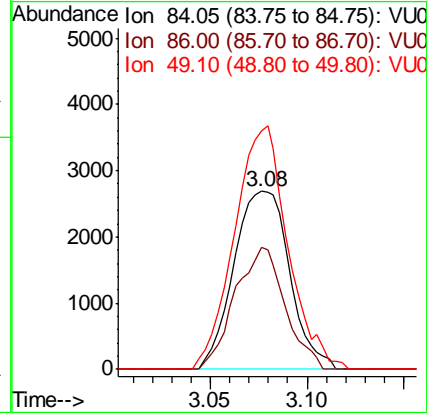
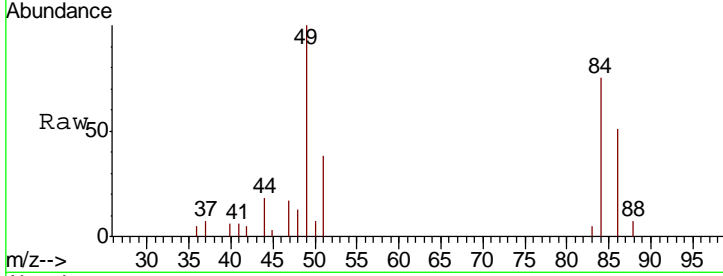




#16  
 Methylene chloride  
 Concen: 0.295 ug/L  
 RT: 3.08 min Scan# 540  
 Delta R.T. -0.00 min  
 Lab File: VU039150.D  
 Acq: 26 Jun 2020 06:03

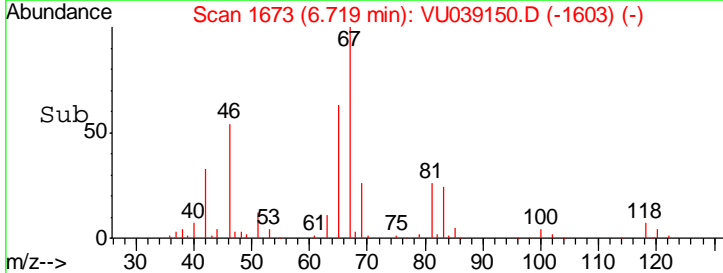
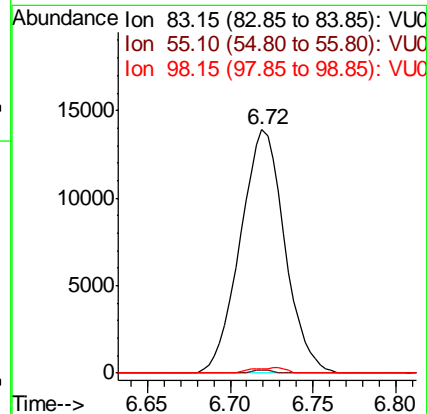
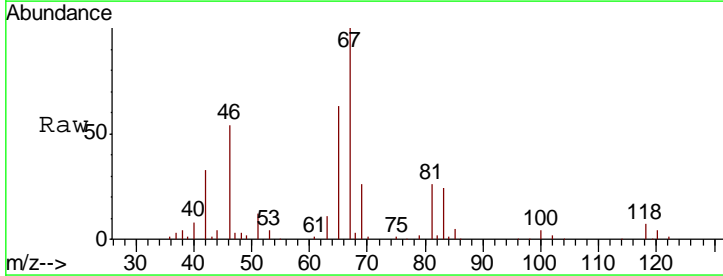
Instrument :  
 MSVOA\_U  
 ClientSampled :  
 F9Q77

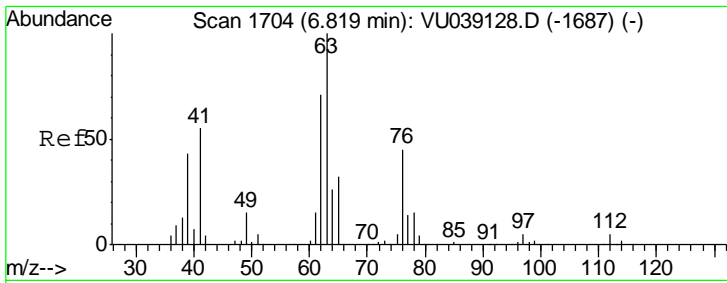
Tgt Ion	Resp	Lower	Upper
84	100		
86	68.5	44.1	81.9
49	134.1	93.1	172.9



#35  
 Methylcyclohexane  
 Concen: 1.083 ug/L  
 RT: 6.72 min Scan# 1673  
 Delta R.T. -0.07 min  
 Lab File: VU039150.D  
 Acq: 26 Jun 2020 06:03

Tgt Ion	Resp	Lower	Upper
83	100		
55	0.5	65.5	98.3#
98	1.7	36.5	54.7#

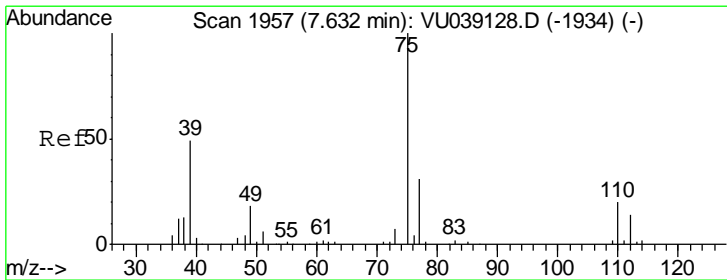
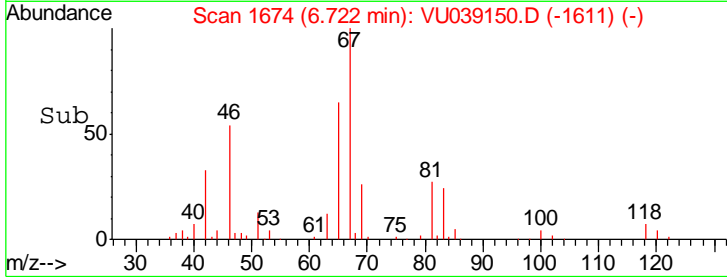
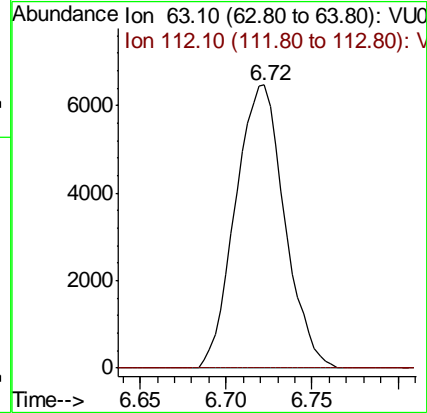
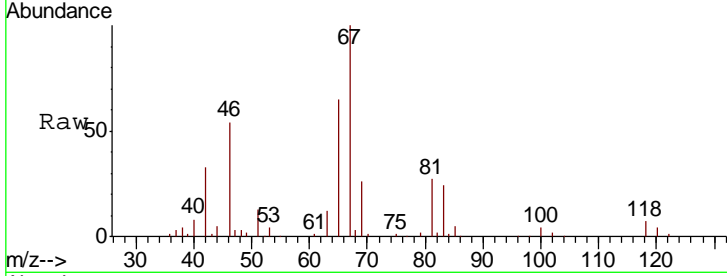




#37  
 1,2-Dichloropropane  
 Concen: 0.711 ug/L  
 RT: 6.72 min Scan# 1674  
 Delta R.T. -0.10 min  
 Lab File: VU039150.D  
 Acq: 26 Jun 2020 06:03

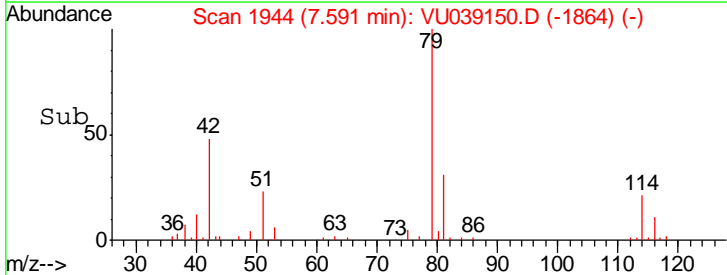
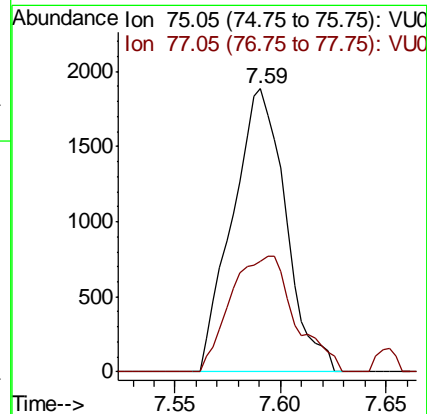
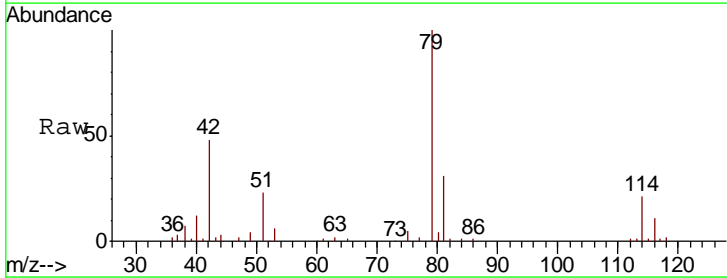
Instrument :  
 MSVOA\_U  
 ClientSampled :  
 F9Q77

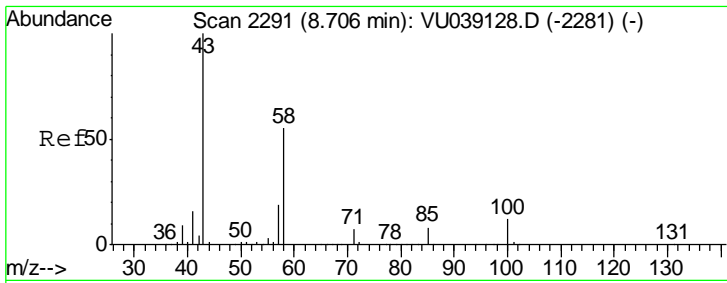
Tgt Ion: 63 Resp: 12817  
 Ion Ratio Lower Upper  
 63 100  
 112 0.0 3.4 5.2#



#39  
 cis-1,3-Dichloropropene  
 Concen: 0.132 ug/L  
 RT: 7.59 min Scan# 1944  
 Delta R.T. -0.04 min  
 Lab File: VU039150.D  
 Acq: 26 Jun 2020 06:03

Tgt Ion: 75 Resp: 3308  
 Ion Ratio Lower Upper  
 75 100  
 77 39.0 21.6 40.0

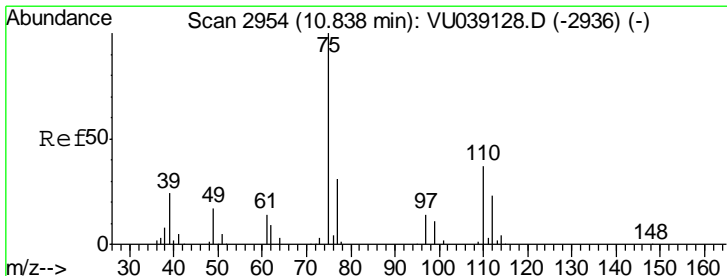
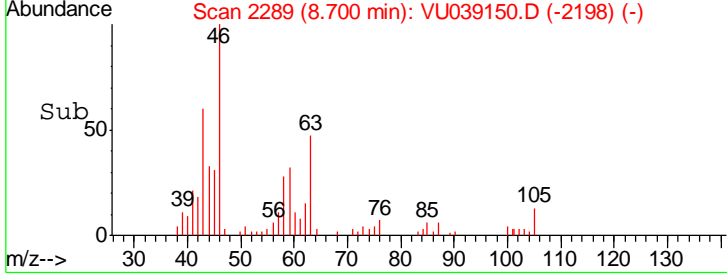
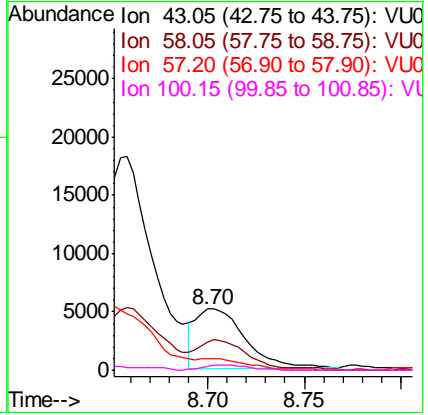
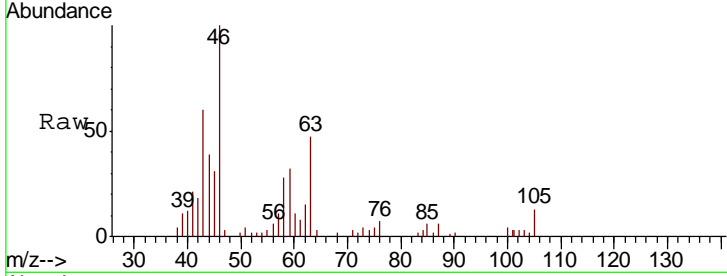




#48  
 2-Hexanone  
 Concen: 0.919 ug/L  
 RT: 8.70 min Scan# 2289  
 Delta R.T. -0.01 min  
 Lab File: VU039150.D  
 Acq: 26 Jun 2020 06:03

Instrument : MSVOA\_U  
 ClientSampled : F9Q77

Tgt Ion	Resp	Lower	Upper
43	100		
58	52.8	44.0	66.0
57	0.0	15.0	22.6#
100	8.5	9.4	14.2#



#59  
 1,2,3-Trichloropropane  
 Concen: 0.870 ug/L  
 RT: 11.82 min Scan# 3260  
 Delta R.T. 0.98 min  
 Lab File: VU039150.D  
 Acq: 26 Jun 2020 06:03

Tgt Ion	Resp	Lower	Upper
75	100		
77	37.2	26.2	39.2

