

Data Path : Z:\VOASRV\HPCHEM1\MSVOA U\DATA\VU062520\
 Data File : VU039117.D
 Acq On : 25 Jun 2020 15:38
 Operator : SY/MD
 Sample : L3109-14DL 2X
 Misc : 25.0mL/MSVOA U/WATER
 ALS Vial : 1 Sample Multiplier: 1

Instrument :
 MSVOA_U
 ClientSampleID :
 F9F58DL

Integration Parameters: rteint.p
 Integrator: RTE
 Smoothing : ON Filtering: 5
 Sampling : 1 Min Area: 3 % of largest Peak
 Start Thrs: 0.1 Max Peaks: 100
 Stop Thrs : 0 Peak Location: TOP

If leading or trailing edge < 100 prefer < Baseline drop else tangent >
 Peak separation: 5

Method : Z:\VOASRV\HPCHEM1\MSVOA_U\METHOD\SOMUTR062320WMA.M
 Title : TRACE VOA SOM01.0

Signal : TIC

peak #	R.T. min	first scan	max scan	last scan	PK TY	peak height	corr. area	corr. % max.	% of total
1	1.610	77	84	100	rVB	123450	143862	8.35%	1.277%
2	1.929	175	183	196	rBV	104547	143656	8.34%	1.275%
3	2.584	373	387	407	rBV	219692	366757	21.28%	3.255%
4	3.070	527	538	551	rVB3	30705	58217	3.38%	0.517%
5	3.215	567	583	598	rBV2	12730	31712	1.84%	0.281%
6	4.678	1019	1038	1082	rBV	215836	762929	44.27%	6.771%
7	5.099	1152	1169	1192	rVB2	219047	488100	28.32%	4.332%
8	5.755	1351	1373	1398	rBV2	426492	1119282	64.95%	9.933%
9	6.276	1521	1535	1554	rBV	349099	649801	37.70%	5.767%
10	6.565	1610	1625	1638	rBV5	34494	71283	4.14%	0.633%
11	6.716	1658	1672	1693	rBV	279994	544770	31.61%	4.835%
12	7.588	1931	1943	1962	rBV	133359	240475	13.95%	2.134%
13	7.919	2030	2046	2064	rBV	465238	792874	46.01%	7.036%
14	8.198	2120	2133	2151	rBV	93734	163950	9.51%	1.455%
15	8.571	2234	2249	2263	rBV	669925	1123766	65.21%	9.973%
16	8.665	2263	2278	2316	rVB2	655278	1723397	100.00%	15.294%
17	9.433	2503	2517	2540	rBV	500057	845653	49.07%	7.505%
18	10.774	2920	2934	2950	rVB	234579	398011	23.09%	3.532%
19	11.825	3246	3261	3279	rBV	499793	791006	45.90%	7.020%
20	12.205	3364	3379	3394	rBV	503213	808592	46.92%	7.176%

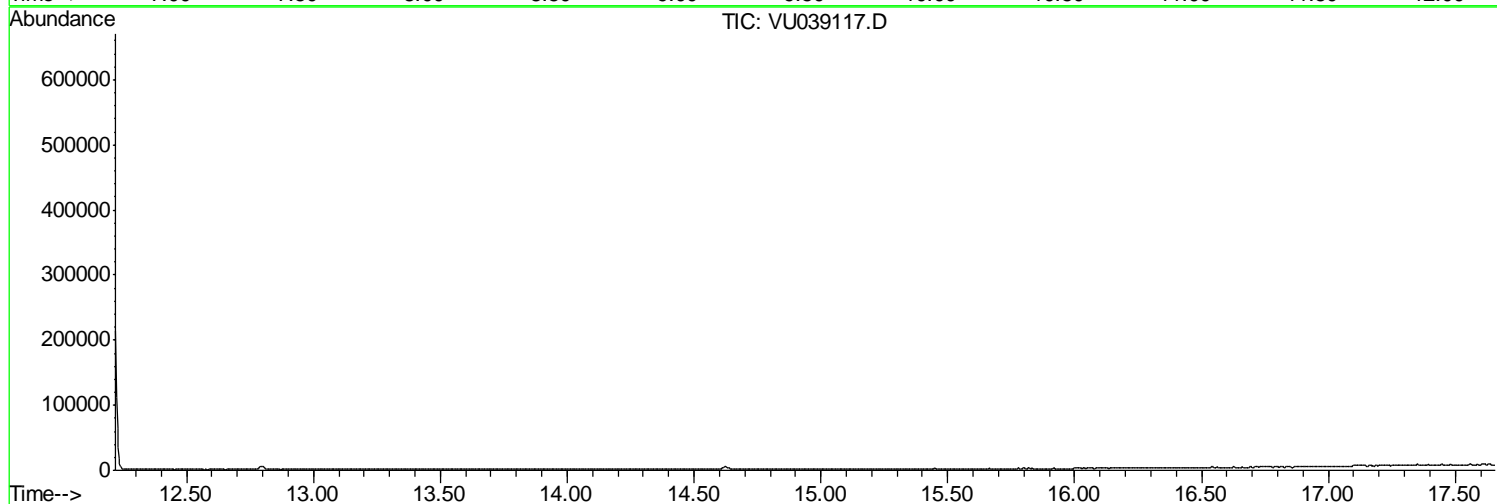
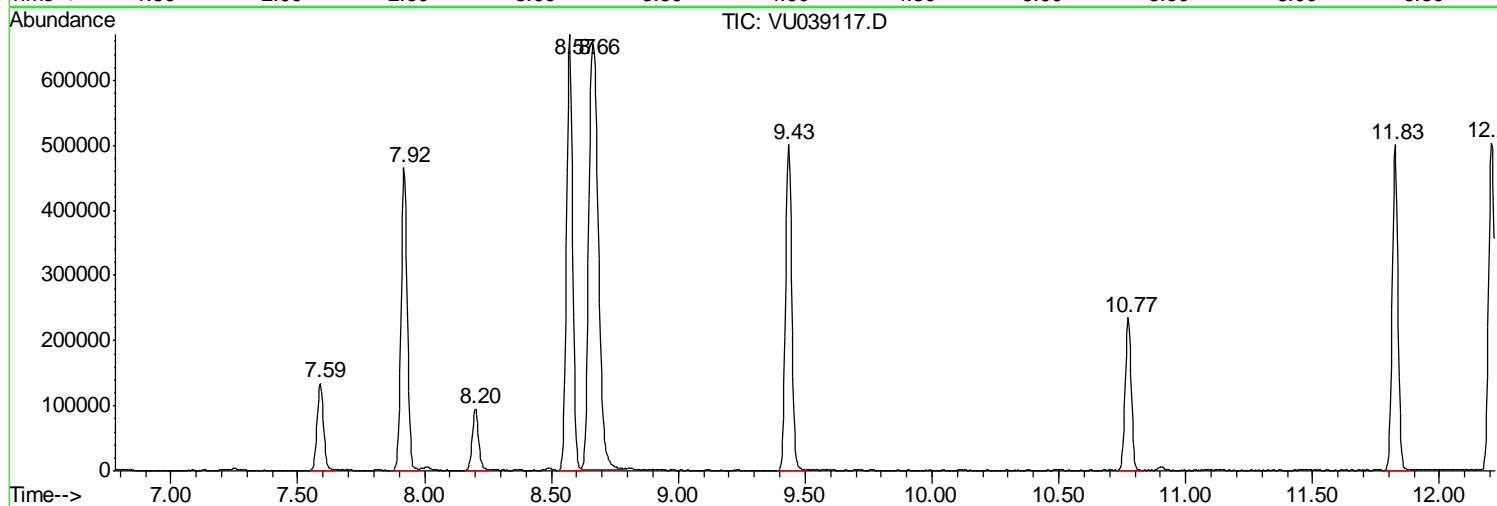
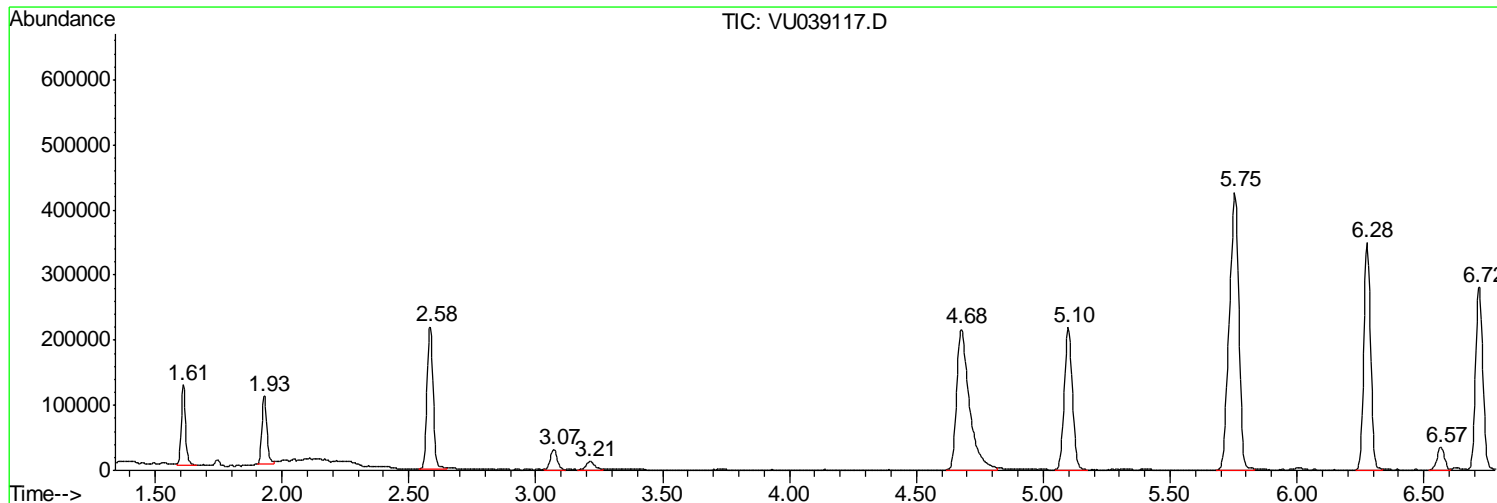
Sum of corrected areas: 11268093

Data Path : Z:\VOASRV\HPCHEM1\MSVOA U\DATA\VU062520\
 Data File : VU039117.D
 Acq On : 25 Jun 2020 15:38
 Operator : SY/MD
 Sample : L3109-14DL 2X
 Misc : 25.0mL/MSVOA U/WATER
 ALS Vial : 1 Sample Multiplier: 1

Instrument :
 MSVOA_U
 ClientSampled :
 F9F58DL

Quant Method : Z:\VOASRV\HPCHEM1\MSVOA_U\METHOD\SOMUTR062320WMA.M
 Quant Title : TRACE VOA SOM01.0

TIC Library : C:\DATABASE\NIST11.L
 TIC Integration Parameters: LSCINT.P



Data Path : Z:\VOASRV\HPCHEM1\MSVOA_U\DATA\VU062520\
Data File : VU039117.D
Acq On : 25 Jun 2020 15:38
Operator : SY/MD
Sample : L3109-14DL 2X
Misc : 25.0mL/MSVOA_U/WATER
ALS Vial : 1 Sample Multiplier: 1

Instrument :
MSVOA_U
ClientSampleId :
F9F58DL

Quant Method : Z:\VOASRV\HPCHEM1\MSVOA_U\METHOD\SOMUTR062320WMA.M
Quant Title : TRACE VOA SOM01.0

TIC Library : C:\DATABASE\NIST11.L
TIC Integration Parameters: LSCINT.P

No Library Search Compounds Detected

Data Path : Z:\VOASRV\HPCHEM1\MSVOA_U\DATA\VU062520\
Data File : VU039117.D
Acq On : 25 Jun 2020 15:38
Operator : SY/MD
Sample : L3109-14DL 2X
Misc : 25.0mL/MSVOA_U/WATER
ALS Vial : 1 Sample Multiplier: 1

Instrument :
MSVOA_U
ClientSampleId :
F9F58DL

Quant Method : Z:\VOASRV\HPCHEM1\MSVOA_U\METHOD\SOMUTR062320WMA.M
Quant Title : TRACE VOA SOM01.0

TIC Library : C:\DATABASE\NIST11.L
TIC Integration Parameters: LSCINT.P

TIC Top Hit name	RT	EstConc	Units	Response	--Internal Standard--			
					#	RT	Resp	Conc
