

Data Path : Z:\voasrv\HPCHEM1\MSVOA_U\Data\VU062525\
 Data File : VU063449.D
 Acq On : 25 Jun 2025 08:50
 Operator : MD/SY
 Sample : VSTDCCC010
 Misc : 25mL/MSVOA_U/WATER
 ALS Vial : 2 Sample Multiplier: 1

Instrument :
 MSVOA_U
ClientSampleId :
 VSTDCCC010

Quant Time: Jun 26 01:24:07 2025
 Quant Method : Z:\voasrv\HPCHEM1\MSVOA_U\Method\524U062325DW.M
 Quant Title : METHOD 524.2 VOLATILES DRINKING WATER
 QLast Update : Tue Jun 24 05:06:50 2025
 Response via : Initial Calibration

Compound	R.T.	QIon	Response	Conc	Units	Dev(Min)
Internal Standards						
1) Fluorobenzene	6.100	96	52556	1.000	ug/l	# 0.00
System Monitoring Compounds						
57) 4-Bromofluorobenzene	10.627	95	23153	1.200	ug/l	0.00
Spiked Amount	1.000		Recovery	=	120.000%	
68) 1,2-Dichlorobenzene-d4	12.183	152	18327	0.946	ug/l	0.00
Spiked Amount	1.000		Recovery	=	95.000%	
Target Compounds						
						Qvalue
2) Dichlorodifluoromethane	1.380	85	204860	10.149	ug/l	100
3) Chloromethane	1.518	50	207261	7.794	ug/l	100
4) Vinyl Chloride	1.599	62	195116	8.569	ug/l	99
5) Bromomethane	1.843	94	122454	11.225	ug/l	99
6) Chloroethane	1.923	64	131552	9.754	ug/l	99
7) Trichlorofluoromethane	2.126	101	271756	10.466	ug/l	98
8) 1,1,2-Trichloro-1,2,2-...	2.566	101	143679	10.387	ug/l	98
9) 1,1-Dichloroethene	2.566	96	145022	10.508	ug/l	95
10) Iodomethane	2.708	142	161921	14.536	ug/l	98
11) Allyl Chloride	2.907	41	229141	9.322	ug/l	96
12) Acrylonitrile	3.303	53	74039	18.570	ug/l	95
13) Acetone	2.618	43	176664	44.865	ug/l	97
14) Carbon Disulfide	2.775	76	469266	9.752	ug/l	98
15) Methylene Chloride	3.029	84	169742	9.704	ug/l	95
16) trans-1,2-Dichloroethene	3.335	96	155005	9.983	ug/l	94
17) 1,1-Dichloroethane	3.849	63	317686	9.744	ug/l	99
18) 2-Butanone	4.711	43	246579	44.314	ug/l	97
19) Cyclohexane	5.361	56	257831	10.453	ug/l	97
20) Methylcyclohexane	6.746	83	263220	11.494	ug/l	99
21) 2,2-Dichloropropane	4.644	77	235029	10.143	ug/l	98
22) cis-1,2-Dichloroethene	4.647	96	171773	10.135	ug/l	93
23) Diethyl Ether	2.367	59	122046	9.802	ug/l	96
24) tert-Butyl Alcohol	3.190	59	117618	89.669	ug/l	98
25) Methyl tert-Butyl Ether	3.357	73	369535	9.846	ug/l	98
26) Bromochloromethane	4.955	128	69457	10.529	ug/l	86
27) Chloroform	5.071	83	302723	9.904	ug/l	98
28) 1,1,1-Trichloroethane	5.293	97	253539	10.230	ug/l	100
29) 1,1-Dichloropropene	5.502	75	228466	10.091	ug/l	98
30) Carbon Tetrachloride	5.499	117	207178	10.467	ug/l	99
31) Isopropyl Ether	3.991	45	468001	9.188	ug/l	98
32) Ethyl-t-butyl ether	4.502	59	415759	9.631	ug/l	97
33) Tert-Amyl methyl ether	5.943	73	341001	11.035	ug/l	99
34) Propionitrile	4.775	54	69044	42.896	ug/l	98
35) Benzene	5.753	78	735290	10.736	ug/l	99
36) 1,2-Dichloroethane	5.782	62	202108	10.095	ug/l	99
37) Trichloroethene	6.528	130	168945	10.439	ug/l	98
38) 1,2-Dichloropropane	6.782	63	206930	10.940	ug/l	98
39) Methacrylonitrile	4.968	41	56312	8.409	ug/l	97
40) Methyl acrylate	4.846	55	93213	9.913	ug/l	100
41) Tetrahydrofuran	5.062	42	55789	15.486	ug/l	91
42) 1-Chlorobutane	5.438	56	319260	9.940	ug/l	99
43) Dibromomethane	6.907	93	92504	10.469	ug/l	97
44) Bromodichloromethane	7.097	83	224663	10.438	ug/l	99

Data Path : Z:\voasrv\HPCHEM1\MSVOA_U\Data\VU062525\
 Data File : VU063449.D
 Acq On : 25 Jun 2025 08:50
 Operator : MD/SY
 Sample : VSTDCCC010
 Misc : 25mL/MSVOA_U/WATER
 ALS Vial : 2 Sample Multiplier: 1

Instrument :
 MSVOA_U
 ClientSampleId :
 VSTDCCC010

Quant Time: Jun 26 01:24:07 2025
 Quant Method : Z:\voasrv\HPCHEM1\MSVOA_U\Method\524U062325DW.M
 Quant Title : METHOD 524.2 VOLATILES DRINKING WATER
 QLast Update : Tue Jun 24 05:06:50 2025
 Response via : Initial Calibration

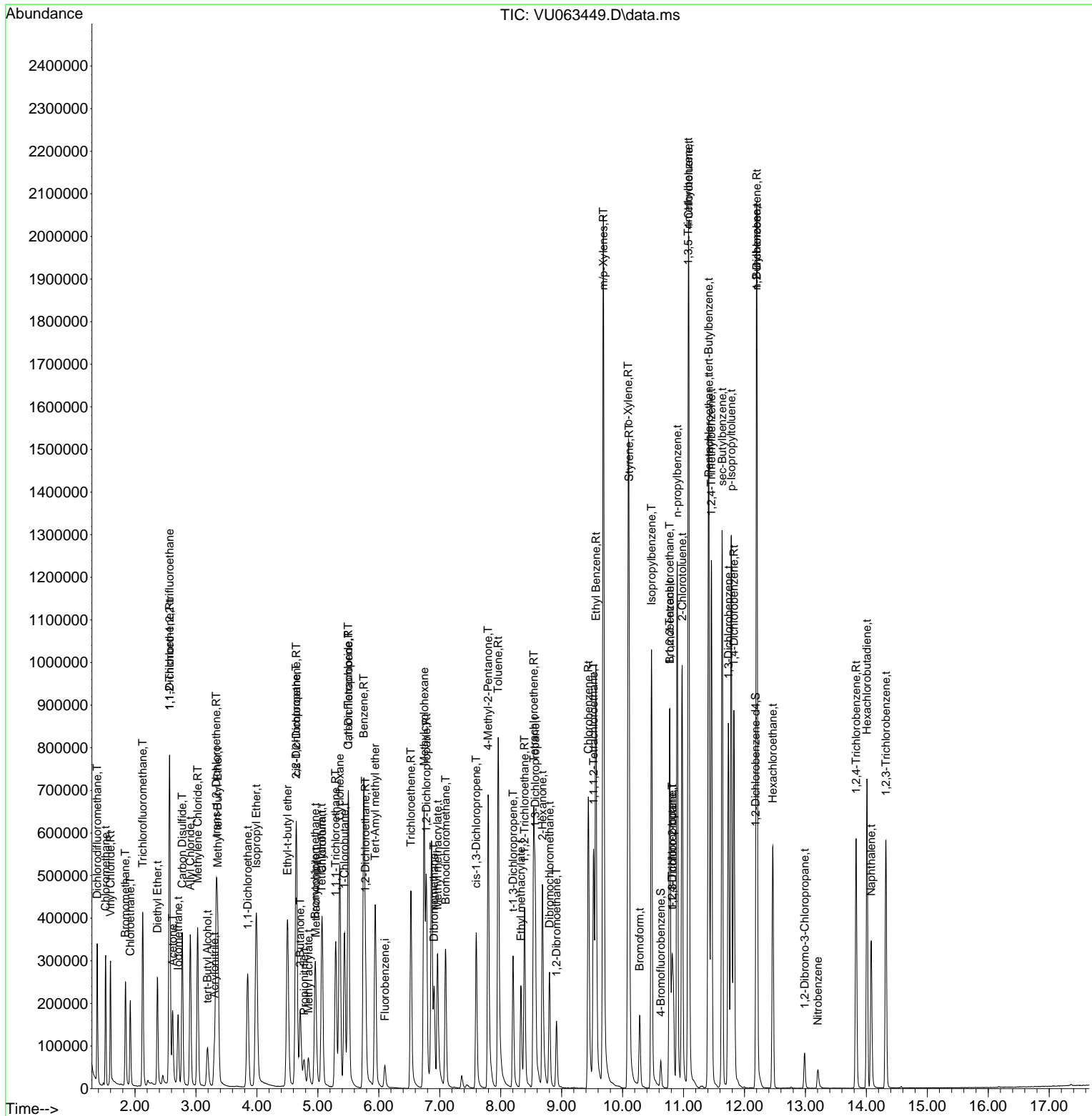
Compound	R.T.	QIon	Response	Conc	Units	Dev(Min)
45) 4-Methyl-2-Pentanone	7.795	43	500195	52.736	ug/l	98
46) t-1,4-Dichloro-2-butene	10.814	75	175190	56.192	ug/l #	45
47) Methyl methacrylate	6.965	69	167148	19.869	ug/l	96
48) Ethyl methacrylate	8.332	69	147589	9.885	ug/l	98
49) Toluene	7.959	92	436632	11.613	ug/l	100
50) t-1,3-Dichloropropene	8.203	75	186519	12.017	ug/l	97
51) cis-1,3-Dichloropropene	7.598	75	239895	11.507	ug/l	98
52) 1,1,2-Trichloroethane	8.393	97	134608	10.421	ug/l	98
53) 1,3-Dichloropropane	8.566	76	235907	10.615	ug/l	100
54) 2-Hexanone	8.685	43	354154	48.045	ug/l	100
55) Dibromochloromethane	8.801	129	142986	10.729	ug/l	100
56) 1,2-Dibromoethane	8.917	107	108391	10.351	ug/l	99
58) Tetrachloroethene	8.544	164	164257	10.346	ug/l	100
59) Chlorobenzene	9.441	112	440205	10.936	ug/l	99
60) 1,1,1,2-Tetrachloroethane	9.524	131	153810	10.616	ug/l	99
61) Pentachloroethane	11.418	117	120196	10.183	ug/l	97
62) Hexachloroethane	12.463	117	114058	10.744	ug/l	96
63) Ethyl Benzene	9.563	91	776594	12.034	ug/l	100
64) m/p-Xylenes	9.685	106	618471	20.263	ug/l	98
65) o-Xylene	10.093	106	288753	11.778	ug/l	98
66) Styrene	10.106	104	507195	10.335	ug/l	99
67) Bromoform	10.280	173	76418	10.495	ug/l	98
69) Isopropylbenzene	10.476	105	677354	11.926	ug/l	100
70) 1,1,2,2-Tetrachloroethane	10.772	83	169089	10.234	ug/l	100
71) 1,2,3-Trichloropropane	10.814	75	175190	12.983	ug/l #	88
72) Bromobenzene	10.775	156	173085	10.857	ug/l	95
73) n-propylbenzene	10.897	120	205755	9.992	ug/l	98
74) 2-Chlorotoluene	10.978	126	184161	11.686	ug/l	95
75) 1,3,5-Trimethylbenzene	11.077	105	689518	10.191	ug/l	100
76) 4-Chlorotoluene	11.087	126	193497	11.722	ug/l	92
77) tert-Butylbenzene	11.412	119	608730	11.665	ug/l	99
78) 1,2,4-Trimethylbenzene	11.457	105	690056	10.042	ug/l	100
79) sec-Butylbenzene	11.634	105	871629	11.793	ug/l	99
80) Nitrobenzene	13.203	77	31957	41.349	ug/l	97
81) p-Isopropyltoluene	11.785	119	719875	10.125	ug/l	99
82) 1,3-Dichlorobenzene	11.736	146	354961	10.748	ug/l	99
83) 1,4-Dichlorobenzene	11.827	146	369627	10.787	ug/l	99
84) n-Butylbenzene	12.200	91	707587	11.696	ug/l	99
85) 1,2-Dichlorobenzene	12.203	146	341977	10.820	ug/l	99
86) 1,2-Dibromo-3-Chloropr...	12.987	75	24402	10.743	ug/l	99
87) 1,2,4-Trichlorobenzene	13.833	180	181749	10.314	ug/l	99
88) Hexachlorobutadiene	14.010	225	127622	10.215	ug/l	99
89) Naphthalene	14.080	128	295380	8.256	ug/l	99
90) 1,2,3-Trichlorobenzene	14.322	180	181747	10.372	ug/l	98

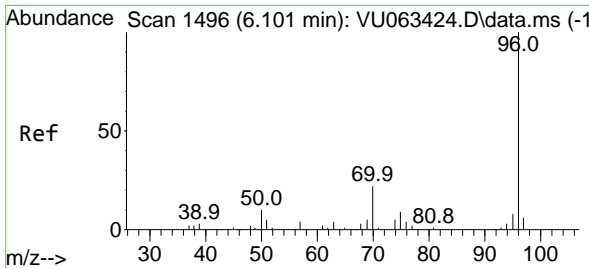
(#) = qualifier out of range (m) = manual integration (+) = signals summed

Data Path : Z:\voasrv\HPCHEM1\MSVOA_U\Data\VU062525\
 Data File : VU063449.D
 Acq On : 25 Jun 2025 08:50
 Operator : MD/SY
 Sample : VSTDC010
 Misc : 25mL/MSVOA_U/WATER
 ALS Vial : 2 Sample Multiplier: 1

Instrument :
 MSVOA_U
 ClientSampleId :
 VSTDC010

Quant Time: Jun 26 01:24:07 2025
 Quant Method : Z:\voasrv\HPCHEM1\MSVOA_U\Method\524U062325DW.M
 Quant Title : METHOD 524.2 VOLATILES DRINKING WATER
 QLast Update : Tue Jun 24 05:06:50 2025
 Response via : Initial Calibration



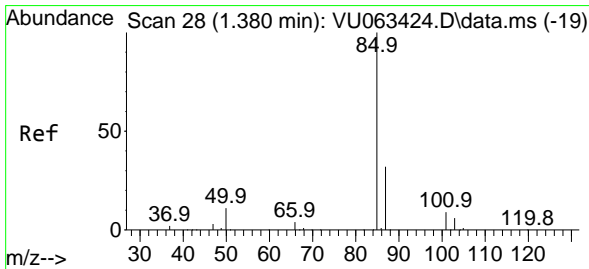
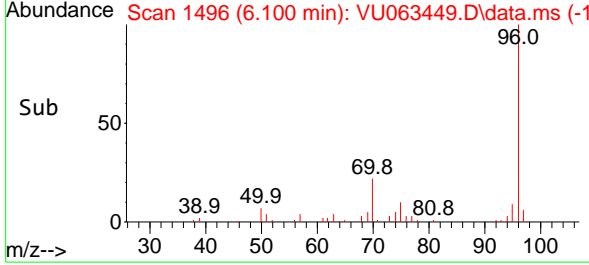
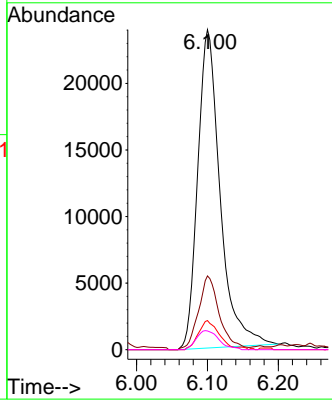
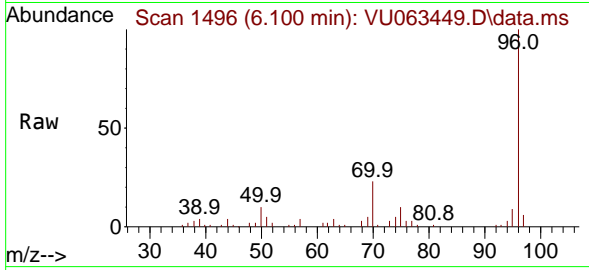


#1
 Fluorobenzene
 Concen: 1.000 ug/l
 RT: 6.100 min Scan# 1496
 Delta R.T. -0.001 min
 Lab File: VU063449.D
 Acq: 25 Jun 2025 08:50

Instrument : MSVOA_U
 ClientSampleId : VSTDCCC010

Tgt Ion: 96 Resp: 52556

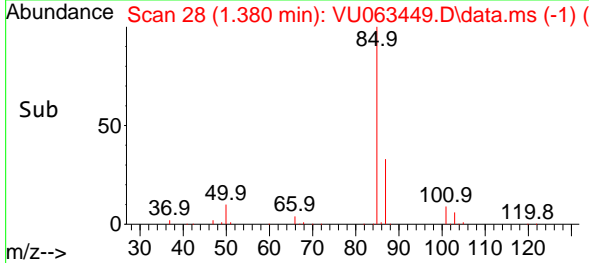
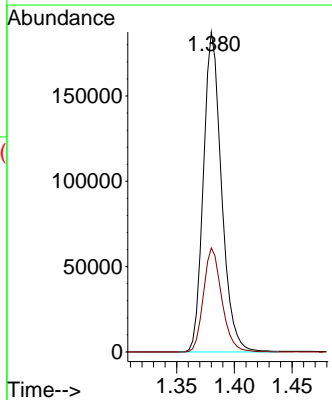
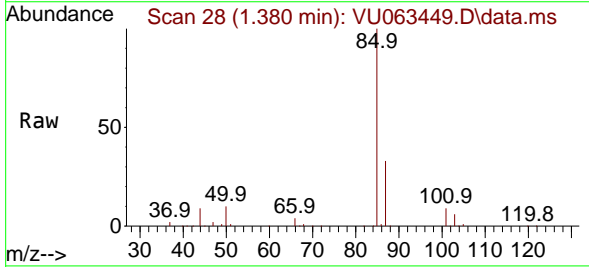
Ion	Ratio	Lower	Upper
96	100		
70	20.6	16.4	24.6
95	7.7	6.2	9.2
97	0.0	0.0	0.0

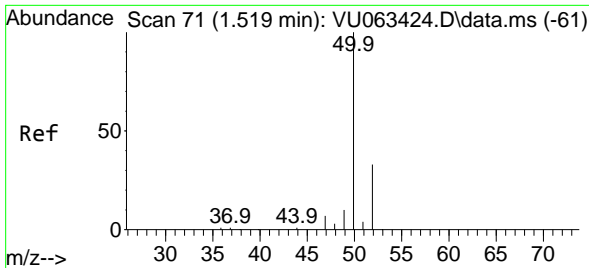


#2
 Dichlorodifluoromethane
 Concen: 10.149 ug/l
 RT: 1.380 min Scan# 28
 Delta R.T. -0.000 min
 Lab File: VU063449.D
 Acq: 25 Jun 2025 08:50

Tgt Ion: 85 Resp: 204860

Ion	Ratio	Lower	Upper
85	100		
87	32.5	16.2	48.5





#3
 Chloromethane
 Concen: 7.794 ug/l
 RT: 1.518 min Scan# 71
 Delta R.T. -0.000 min
 Lab File: VU063449.D
 Acq: 25 Jun 2025 08:50

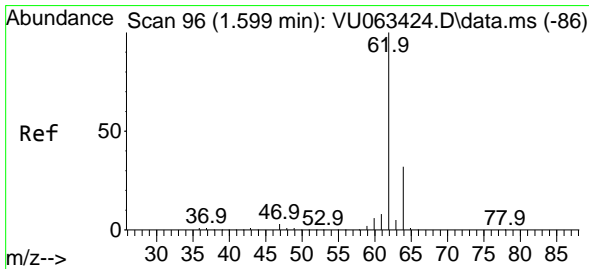
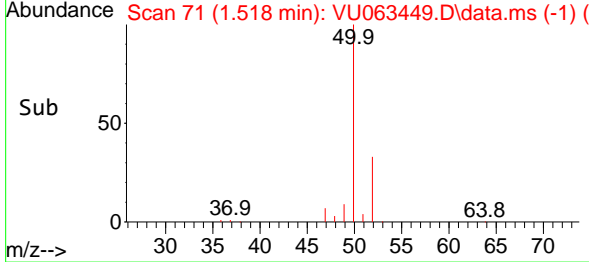
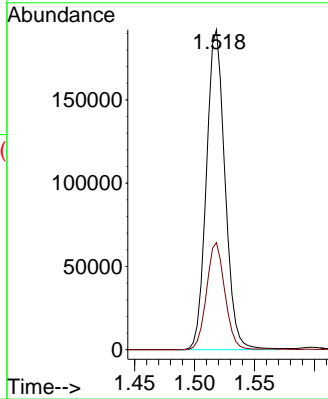
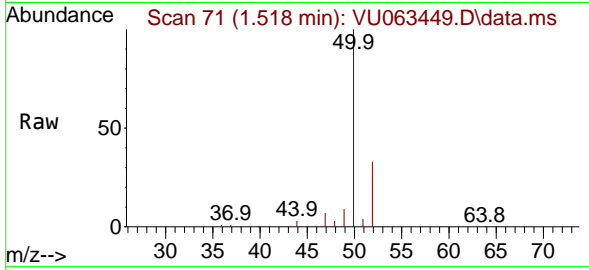
Instrument :

MSVOA_U

ClientSampleId :

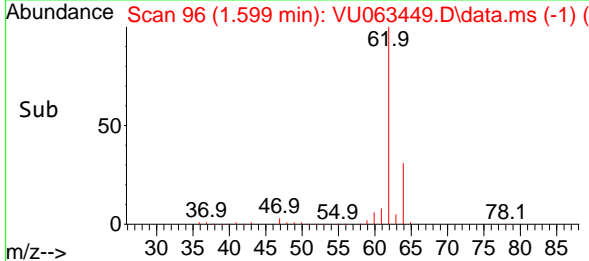
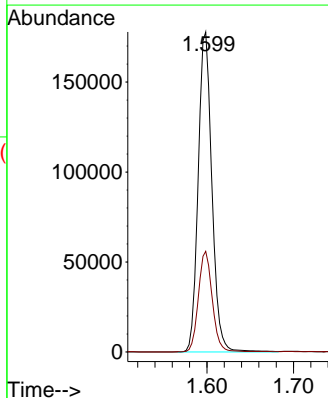
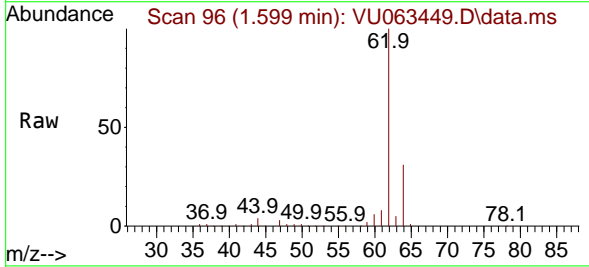
VSTDCCC010

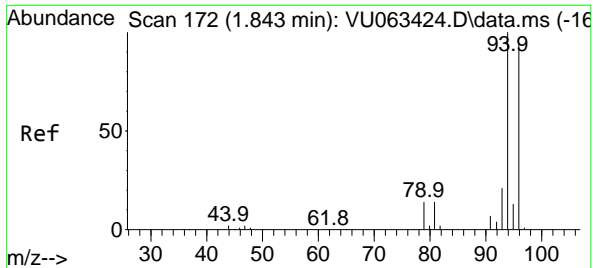
Tgt Ion: 50 Resp: 207261
 Ion Ratio Lower Upper
 50 100
 52 33.5 26.6 40.0



#4
 Vinyl Chloride
 Concen: 8.569 ug/l
 RT: 1.599 min Scan# 96
 Delta R.T. -0.000 min
 Lab File: VU063449.D
 Acq: 25 Jun 2025 08:50

Tgt Ion: 62 Resp: 195116
 Ion Ratio Lower Upper
 62 100
 64 31.4 25.7 38.5

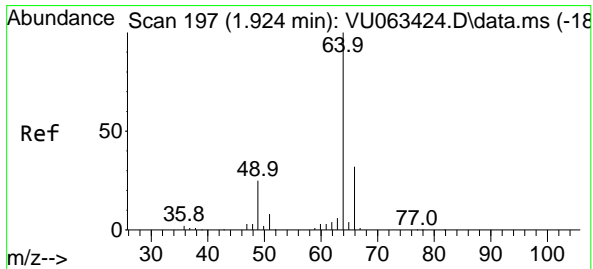
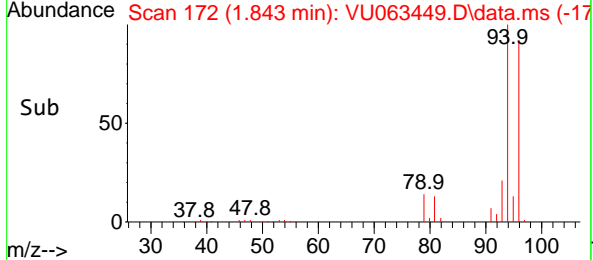
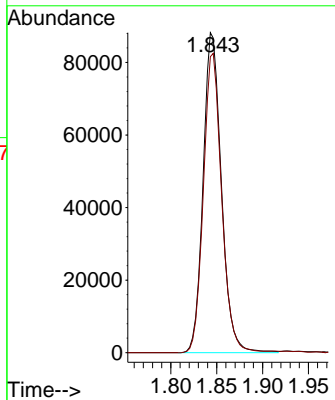
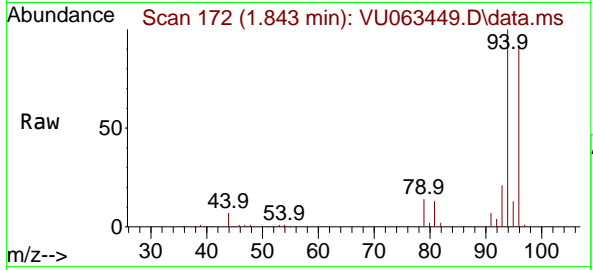




#5
 Bromomethane
 Concen: 11.225 ug/l
 RT: 1.843 min Scan# 172
 Delta R.T. -0.000 min
 Lab File: VU063449.D
 Acq: 25 Jun 2025 08:50

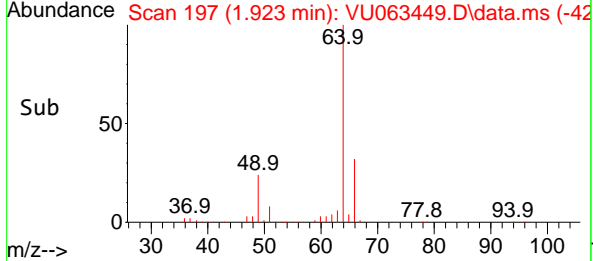
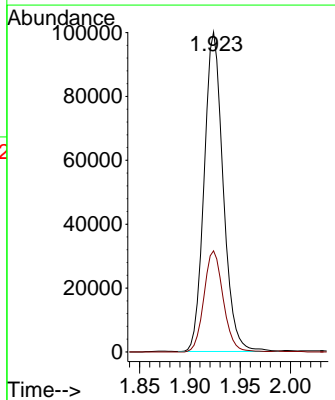
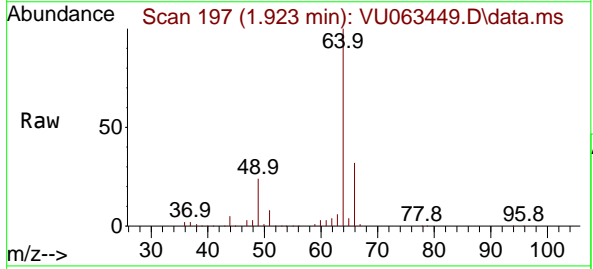
Instrument : MSVOA_U
 ClientSampleId : VSTDCCC010

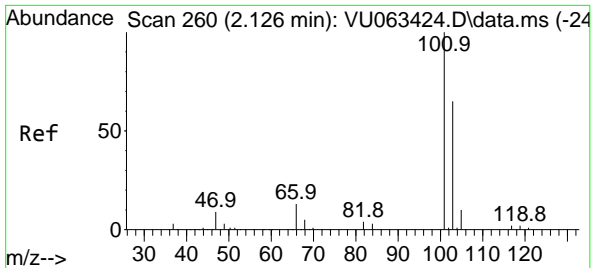
Tgt Ion: 94 Resp: 122454
 Ion Ratio Lower Upper
 94 100
 96 92.5 74.8 112.2



#6
 Chloroethane
 Concen: 9.754 ug/l
 RT: 1.923 min Scan# 197
 Delta R.T. -0.000 min
 Lab File: VU063449.D
 Acq: 25 Jun 2025 08:50

Tgt Ion: 64 Resp: 131552
 Ion Ratio Lower Upper
 64 100
 66 31.7 25.7 38.5

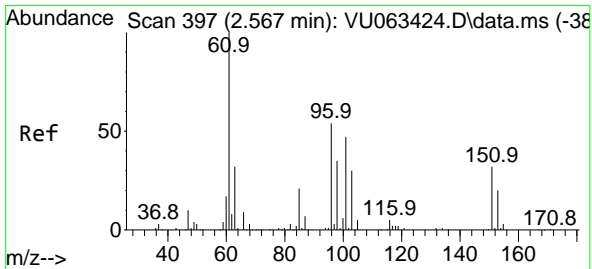
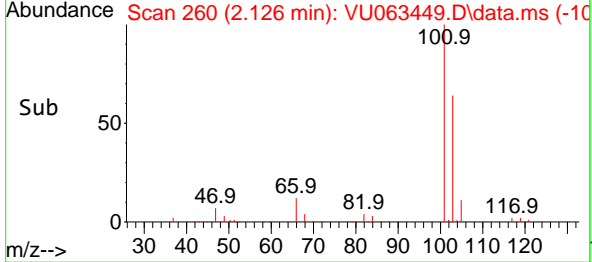
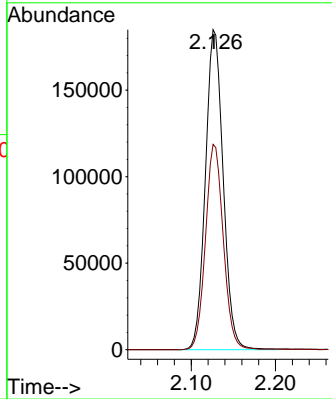
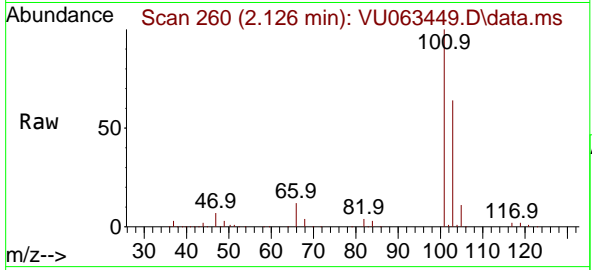




#7
 Trichlorofluoromethane
 Concen: 10.466 ug/l
 RT: 2.126 min Scan# 20
 Delta R.T. -0.000 min
 Lab File: VU063449.D
 Acq: 25 Jun 2025 08:50

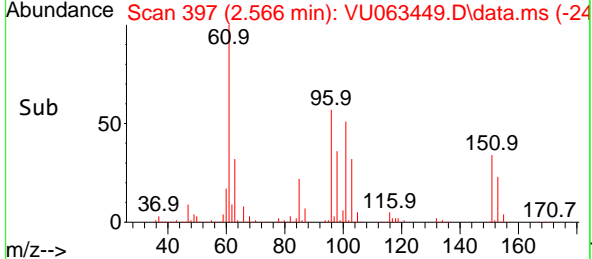
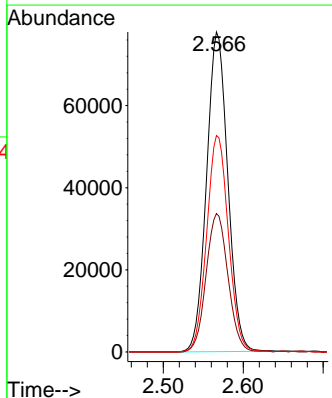
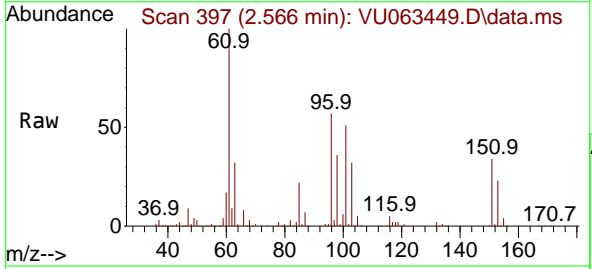
Instrument : MSVOA_U
 ClientSampleId : VSTDCCC010

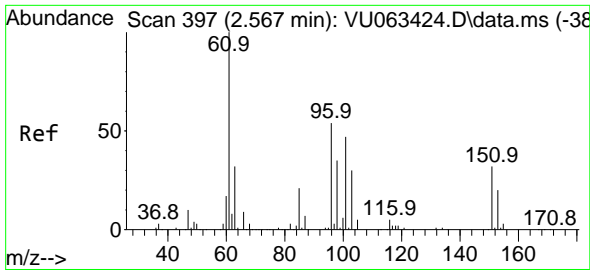
Tgt Ion:101 Resp: 271756
 Ion Ratio Lower Upper
 101 100
 103 64.1 52.3 78.5



#8
 1,1,2-Trichloro-1,2,2-trifluoroethane
 Concen: 10.387 ug/l
 RT: 2.566 min Scan# 397
 Delta R.T. -0.000 min
 Lab File: VU063449.D
 Acq: 25 Jun 2025 08:50

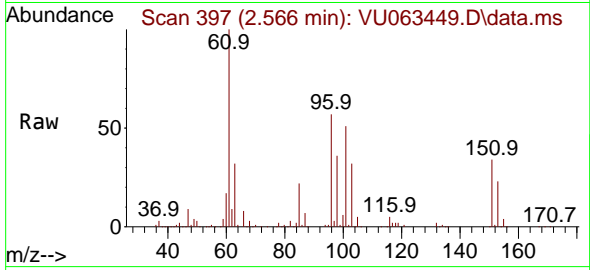
Tgt Ion:101 Resp: 143679
 Ion Ratio Lower Upper
 101 100
 85 44.2 36.7 55.1
 151 68.9 53.9 80.9



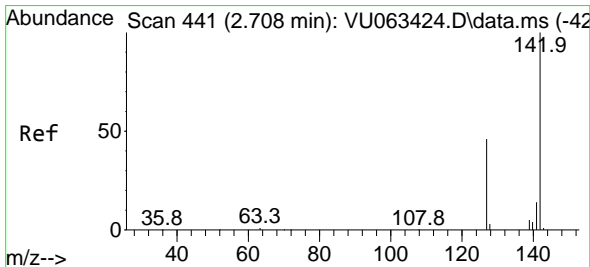
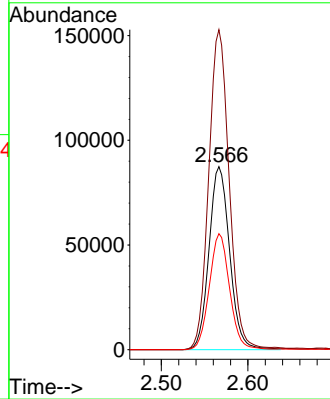
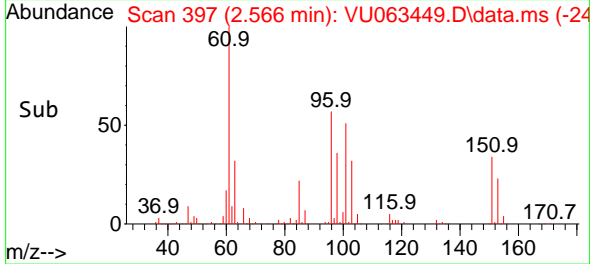


#9
 1,1-Dichloroethene
 Concen: 10.508 ug/l
 RT: 2.566 min Scan# 397
 Delta R.T. -0.000 min
 Lab File: VU063449.D
 Acq: 25 Jun 2025 08:50

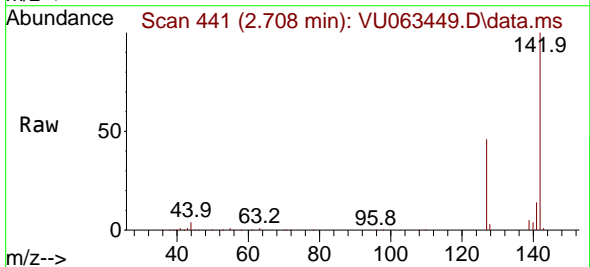
Instrument : MSVOA_U
 ClientSampleId : VSTDCCC010



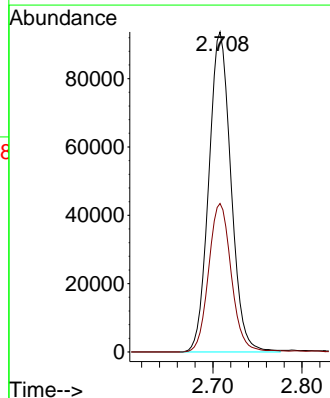
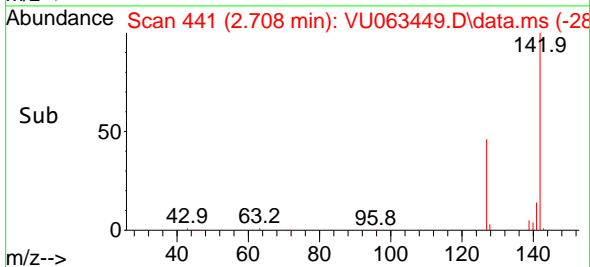
Tgt Ion: 96 Resp: 145022
 Ion Ratio Lower Upper
 96 100
 61 174.8 0.0 552.0
 98 63.4 0.0 128.4

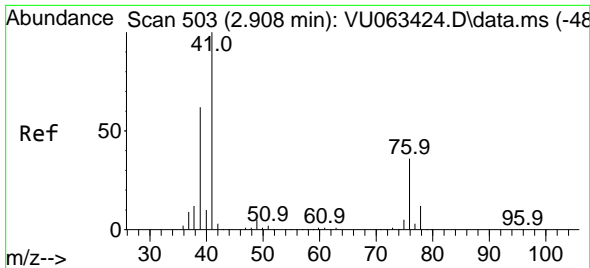


#10
 Iodomethane
 Concen: 14.536 ug/l
 RT: 2.708 min Scan# 441
 Delta R.T. -0.000 min
 Lab File: VU063449.D
 Acq: 25 Jun 2025 08:50



Tgt Ion: 142 Resp: 161921
 Ion Ratio Lower Upper
 142 100
 127 47.5 36.9 55.3

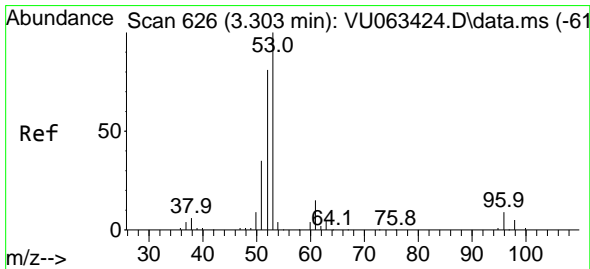
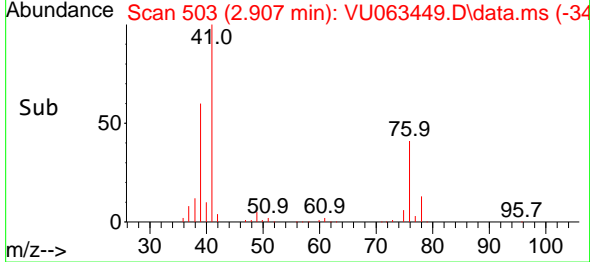
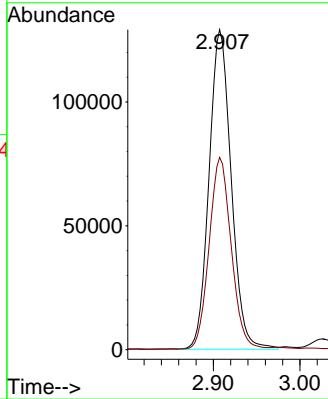
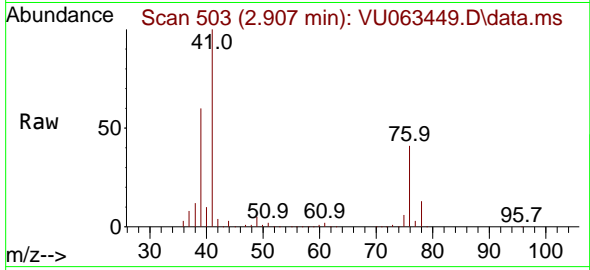




#11
 Allyl Chloride
 Concen: 9.322 ug/l
 RT: 2.907 min Scan# 503
 Delta R.T. -0.001 min
 Lab File: VU063449.D
 Acq: 25 Jun 2025 08:50

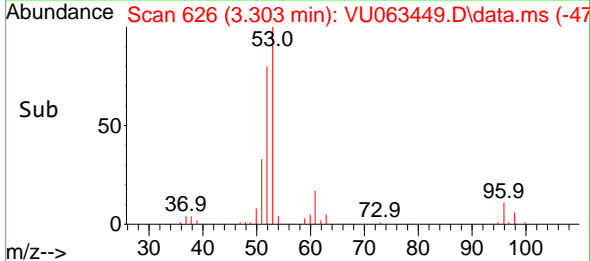
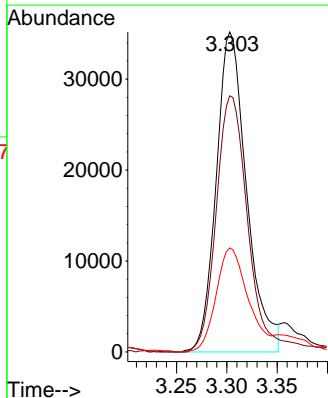
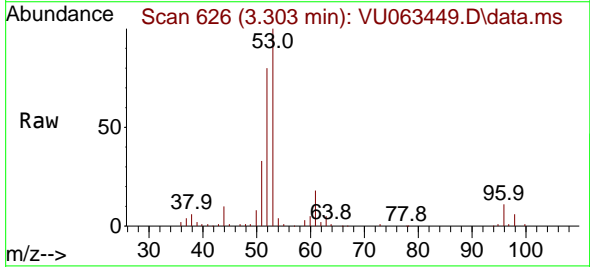
Instrument : MSVOA_U
 ClientSampleId : VSTDCCC010

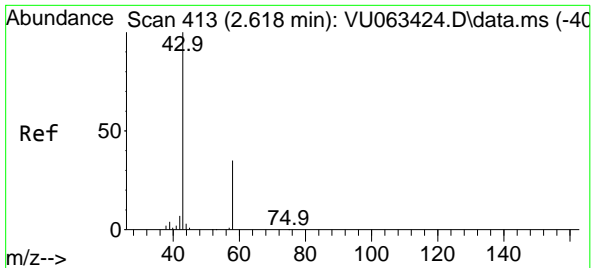
Tgt Ion: 41 Resp: 229141
 Ion Ratio Lower Upper
 41 100
 39 59.7 50.3 75.5



#12
 Acrylonitrile
 Concen: 18.570 ug/l
 RT: 3.303 min Scan# 626
 Delta R.T. -0.000 min
 Lab File: VU063449.D
 Acq: 25 Jun 2025 08:50

Tgt Ion: 53 Resp: 74039
 Ion Ratio Lower Upper
 53 100
 52 84.3 62.8 94.2
 51 34.4 26.2 39.4

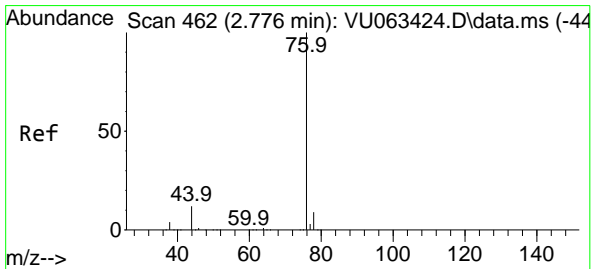
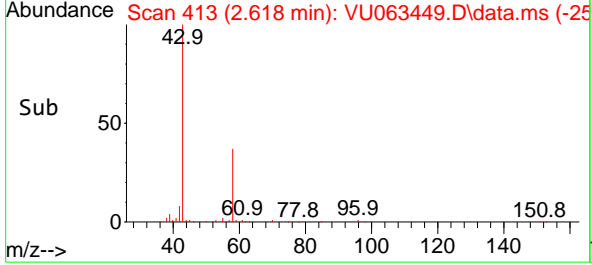
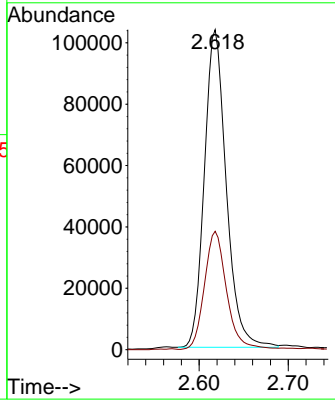
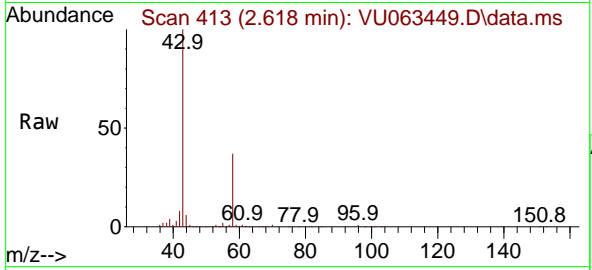




#13
 Acetone
 Concen: 44.865 ug/l
 RT: 2.618 min Scan# 413
 Delta R.T. -0.000 min
 Lab File: VU063449.D
 Acq: 25 Jun 2025 08:50

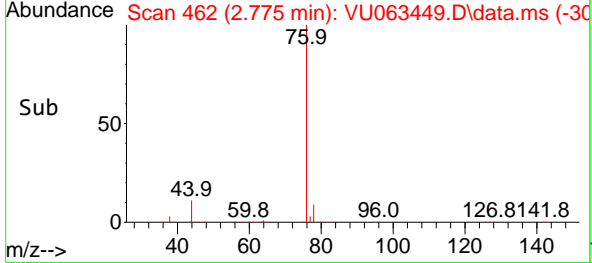
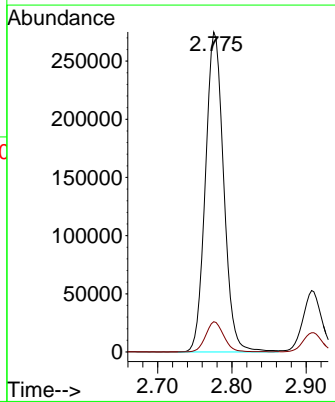
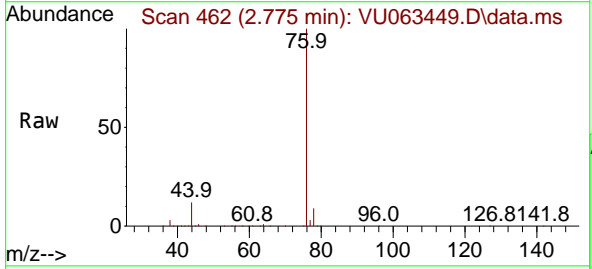
Instrument : MSVOA_U
 ClientSampleId : VSTDCCC010

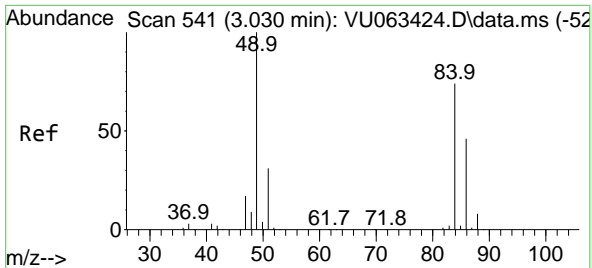
Tgt Ion: 43 Resp: 176664
 Ion Ratio Lower Upper
 43 100
 58 37.2 28.3 42.5



#14
 Carbon Disulfide
 Concen: 9.752 ug/l
 RT: 2.775 min Scan# 462
 Delta R.T. -0.000 min
 Lab File: VU063449.D
 Acq: 25 Jun 2025 08:50

Tgt Ion: 76 Resp: 469266
 Ion Ratio Lower Upper
 76 100
 78 9.4 6.9 10.3



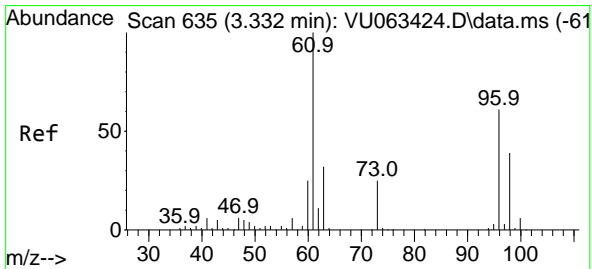
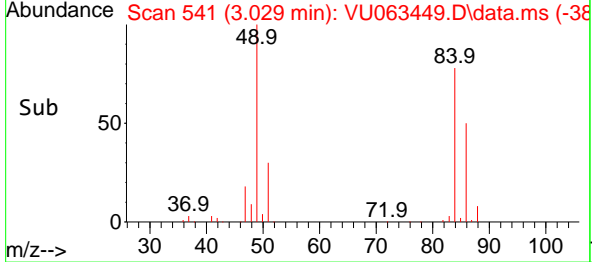
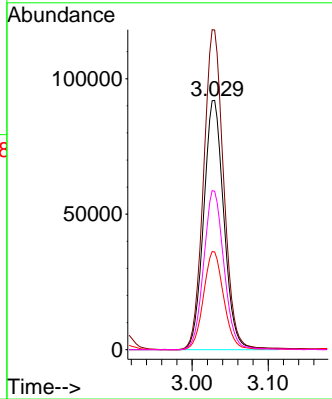
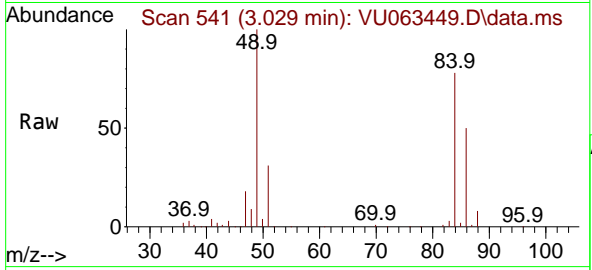


#15
 Methylene Chloride
 Concen: 9.704 ug/l
 RT: 3.029 min Scan# 541
 Delta R.T. -0.000 min
 Lab File: VU063449.D
 Acq: 25 Jun 2025 08:50

Instrument : MSVOA_U
 ClientSampleId : VSTDCCC010

Tgt Ion: 84 Resp: 169742

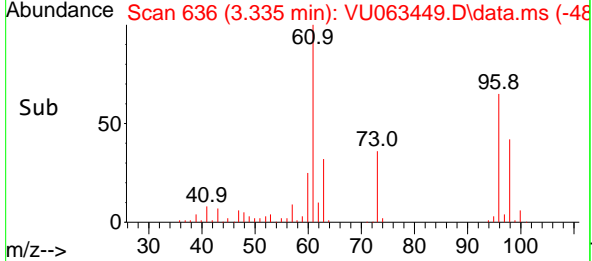
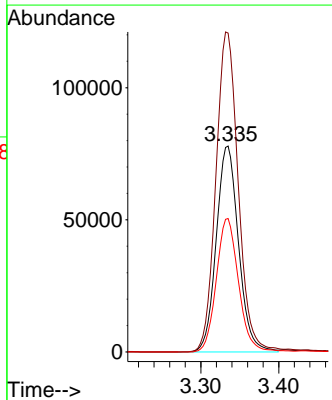
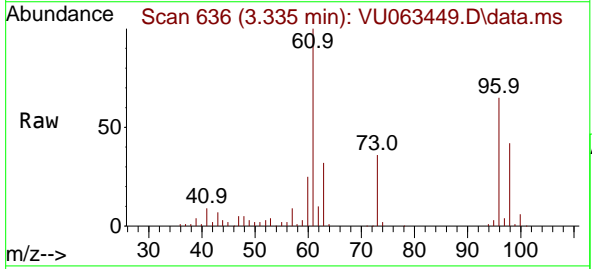
Ion	Ratio	Lower	Upper
84	100		
49	128.3	108.7	163.1
51	39.2	0.0	83.8
86	63.5	50.1	75.1

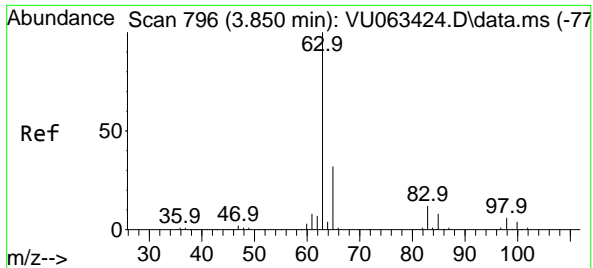


#16
 trans-1,2-Dichloroethene
 Concen: 9.983 ug/l
 RT: 3.335 min Scan# 636
 Delta R.T. 0.003 min
 Lab File: VU063449.D
 Acq: 25 Jun 2025 08:50

Tgt Ion: 96 Resp: 155005

Ion	Ratio	Lower	Upper
96	100		
61	154.8	132.1	198.1
98	64.8	51.0	76.4



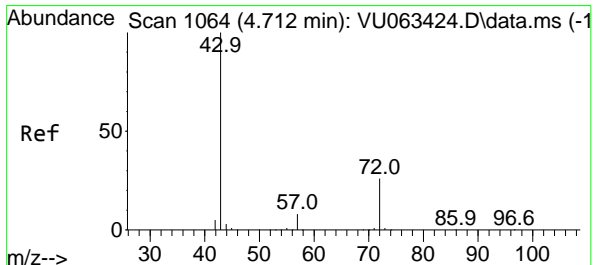
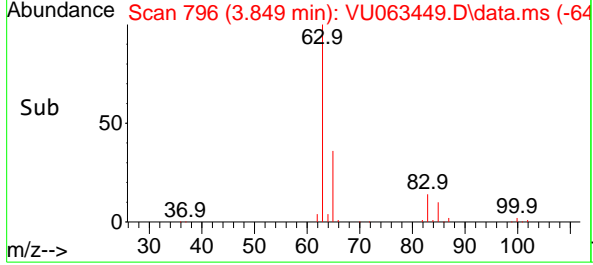
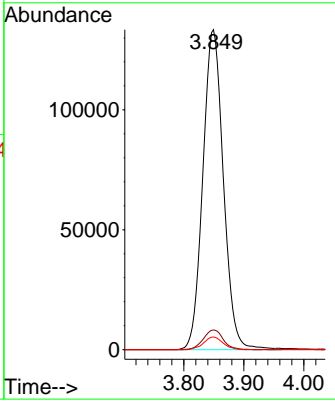
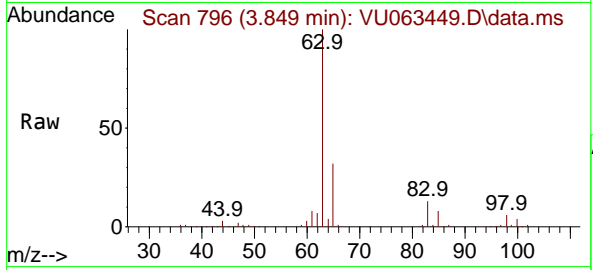


#17
 1,1-Dichloroethane
 Concen: 9.744 ug/l
 RT: 3.849 min Scan# 796
 Delta R.T. -0.000 min
 Lab File: VU063449.D
 Acq: 25 Jun 2025 08:50

Instrument : MSVOA_U
 ClientSampleId : VSTDCCC010

Tgt Ion: 63 Resp: 317686

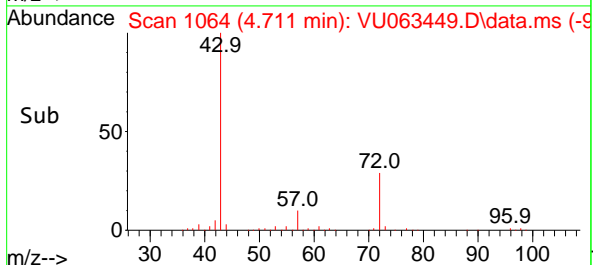
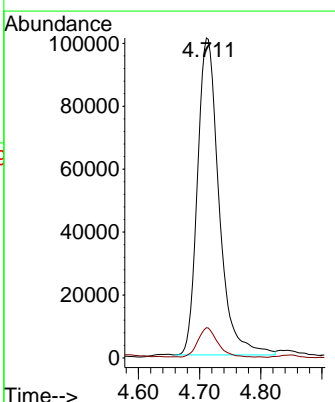
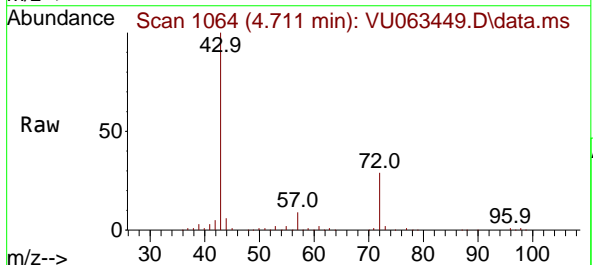
Ion	Ratio	Lower	Upper
63	100		
98	6.2	2.8	8.4
100	3.9	1.9	5.7

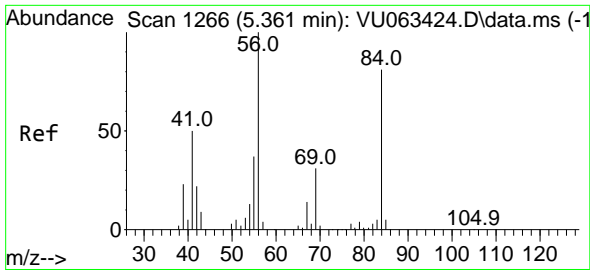


#18
 2-Butanone
 Concen: 44.314 ug/l
 RT: 4.711 min Scan# 1064
 Delta R.T. -0.000 min
 Lab File: VU063449.D
 Acq: 25 Jun 2025 08:50

Tgt Ion: 43 Resp: 246579

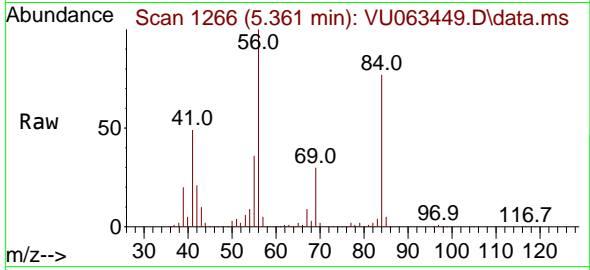
Ion	Ratio	Lower	Upper
43	100		
57	9.2	0.0	16.0





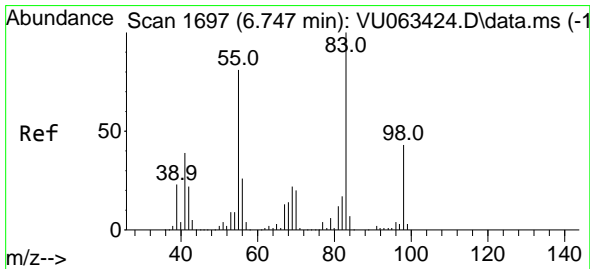
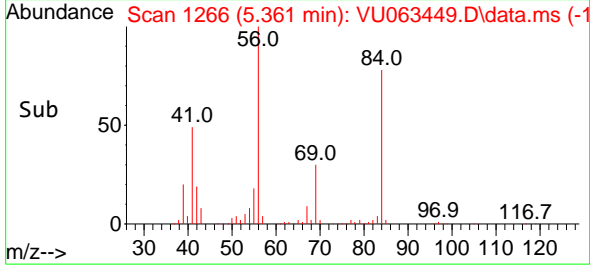
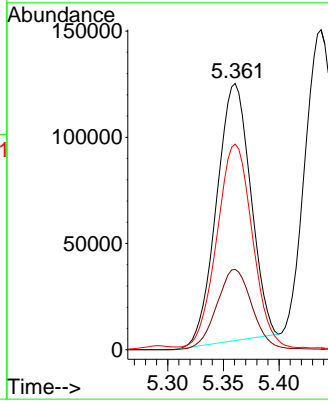
#19
 Cyclohexane
 Concen: 10.453 ug/l
 RT: 5.361 min Scan# 11
 Delta R.T. -0.000 min
 Lab File: VU063449.D
 Acq: 25 Jun 2025 08:50

Instrument :
 MSVOA_U
 ClientSampleId :
 VSTDCCC010



Tgt Ion: 56 Resp: 257831

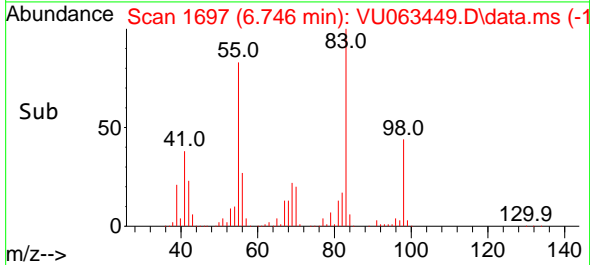
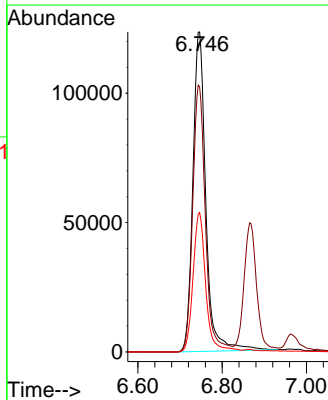
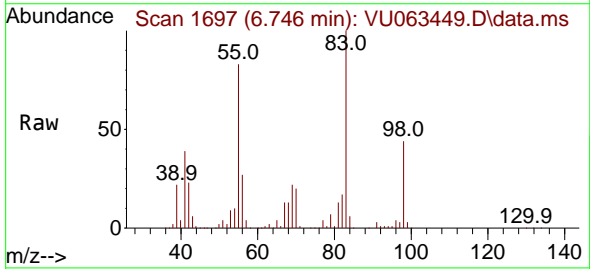
Ion	Ratio	Lower	Upper
56	100		
69	32.4	26.4	39.6
84	81.8	68.6	102.8

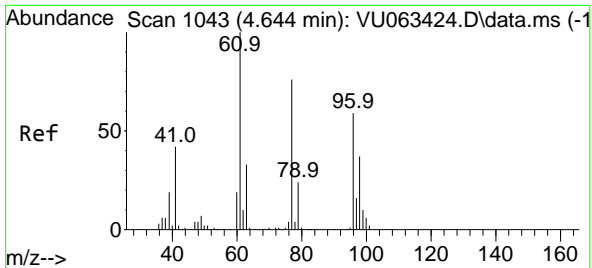


#20
 Methylcyclohexane
 Concen: 11.494 ug/l
 RT: 6.746 min Scan# 1697
 Delta R.T. -0.000 min
 Lab File: VU063449.D
 Acq: 25 Jun 2025 08:50

Tgt Ion: 83 Resp: 263220

Ion	Ratio	Lower	Upper
83	100		
55	79.0	63.5	95.3
98	41.9	34.2	51.4





#21
 2,2-Dichloropropane
 Concen: 10.143 ug/l
 RT: 4.644 min Scan# 1043
 Delta R.T. -0.000 min
 Lab File: VU063449.D
 Acq: 25 Jun 2025 08:50

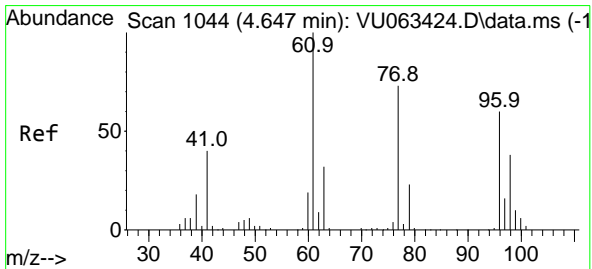
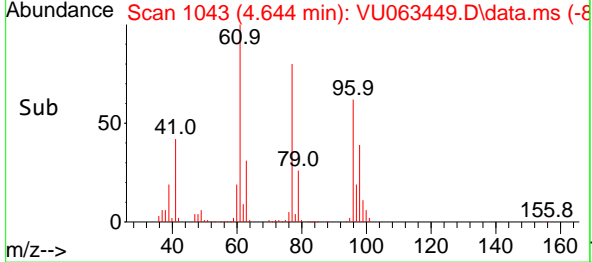
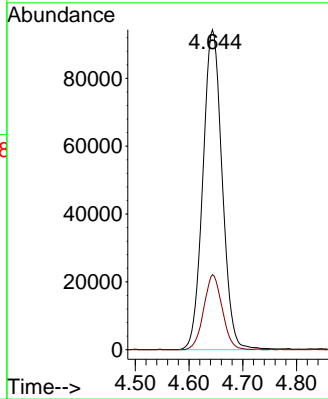
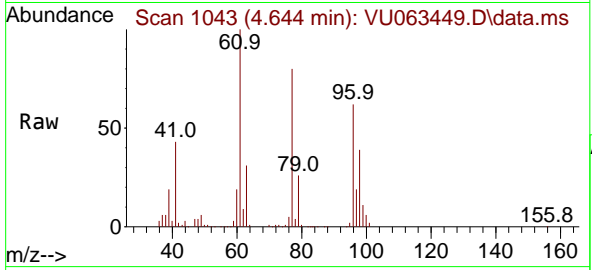
Instrument :

MSVOA_U

ClientSampleId :

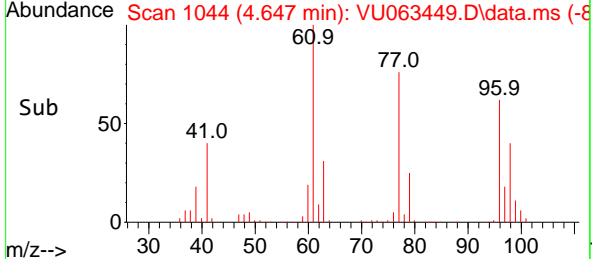
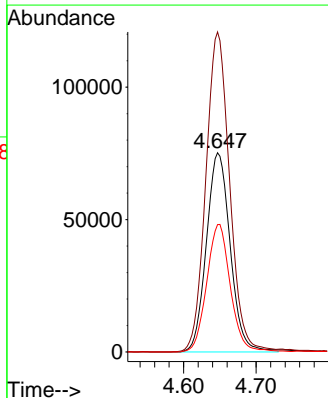
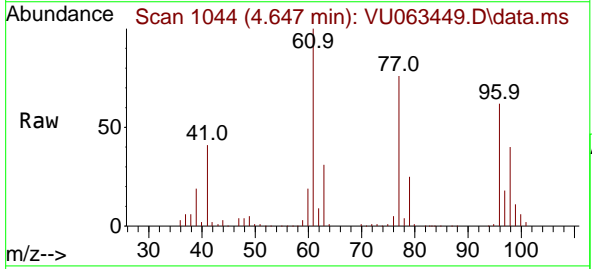
VSTDCCC010

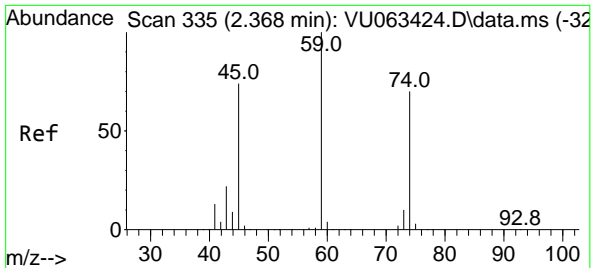
Tgt Ion: 77 Resp: 235029
 Ion Ratio Lower Upper
 77 100
 97 22.5 17.2 25.8



#22
 cis-1,2-Dichloroethene
 Concen: 10.135 ug/l
 RT: 4.647 min Scan# 1044
 Delta R.T. -0.000 min
 Lab File: VU063449.D
 Acq: 25 Jun 2025 08:50

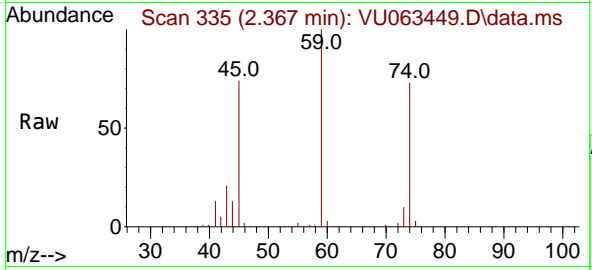
Tgt Ion: 96 Resp: 171773
 Ion Ratio Lower Upper
 96 100
 61 160.2 0.0 434.3
 98 63.7 31.9 95.7





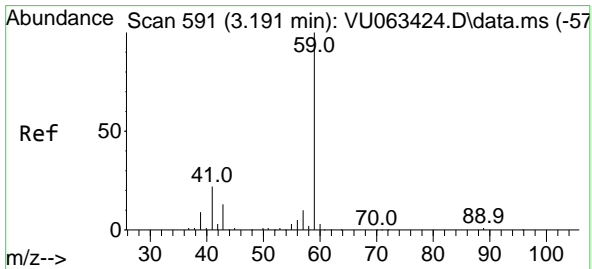
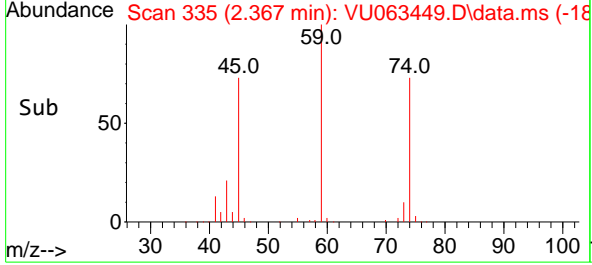
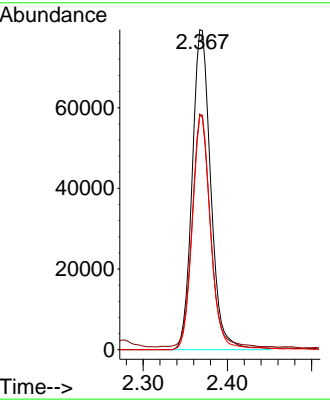
#23
 Diethyl Ether
 Concen: 9.802 ug/l
 RT: 2.367 min Scan# 311
 Delta R.T. -0.000 min
 Lab File: VU063449.D
 Acq: 25 Jun 2025 08:50

Instrument : MSVOA_U
 ClientSampleId : VSTDCCC010

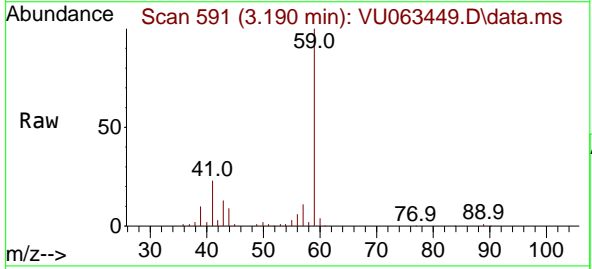


Tgt Ion: 59 Resp: 122046

Ion	Ratio	Lower	Upper
59	100		
45	72.1	60.7	91.1
74	72.4	55.8	83.6

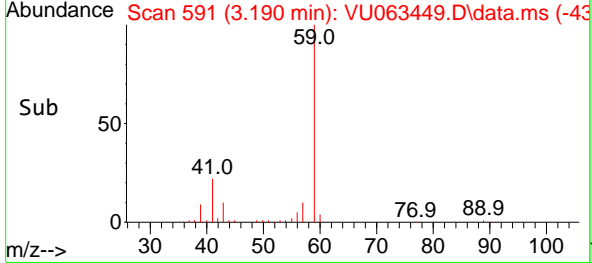
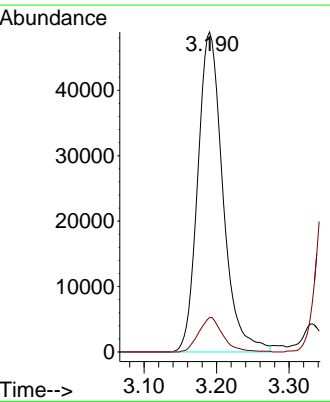


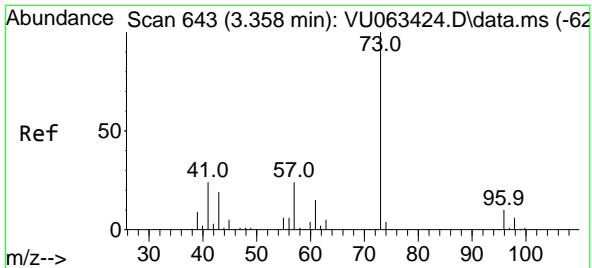
#24
 tert-Butyl Alcohol
 Concen: 89.669 ug/l
 RT: 3.190 min Scan# 591
 Delta R.T. -0.000 min
 Lab File: VU063449.D
 Acq: 25 Jun 2025 08:50



Tgt Ion: 59 Resp: 117618

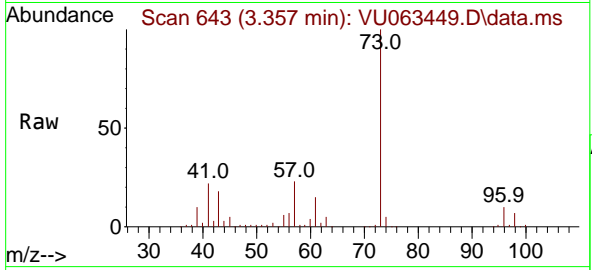
Ion	Ratio	Lower	Upper
59	100		
57	10.4	7.8	11.8



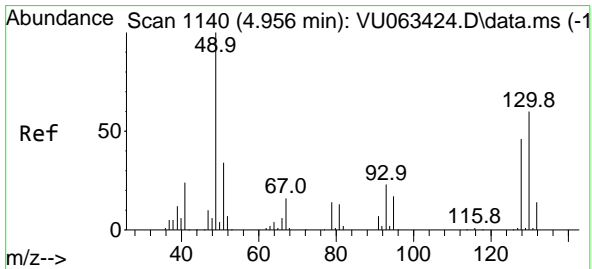
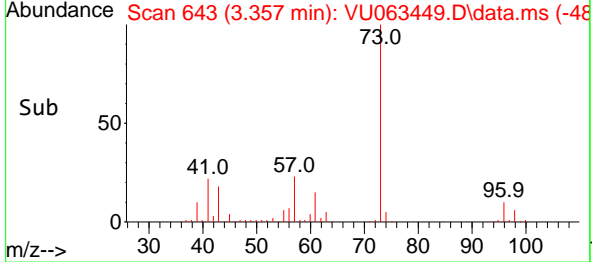
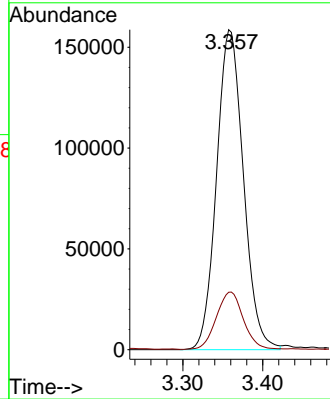


#25
 Methyl tert-Butyl Ether
 Concen: 9.846 ug/l
 RT: 3.357 min Scan# 64
 Delta R.T. -0.001 min
 Lab File: VU063449.D
 Acq: 25 Jun 2025 08:50

Instrument : MSVOA_U
 ClientSampleId : VSTDCCC010

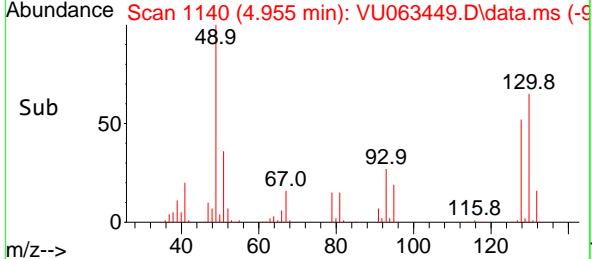
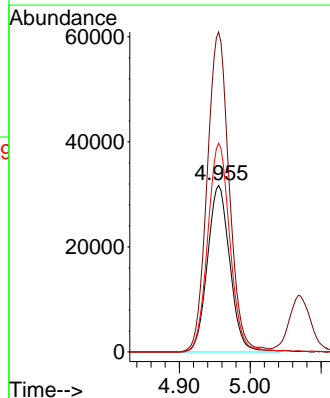
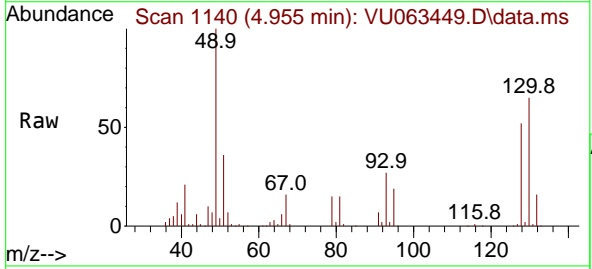


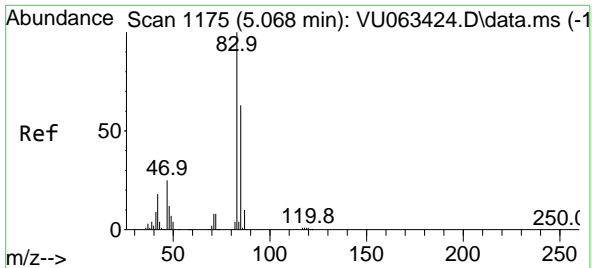
Tgt Ion: 73 Resp: 369535
 Ion Ratio Lower Upper
 73 100
 43 18.0 15.1 22.7



#26
 Bromochloromethane
 Concen: 10.529 ug/l
 RT: 4.955 min Scan# 1140
 Delta R.T. -0.000 min
 Lab File: VU063449.D
 Acq: 25 Jun 2025 08:50

Tgt Ion:128 Resp: 69457
 Ion Ratio Lower Upper
 128 100
 49 189.1 0.0 441.2
 130 123.8 102.3 153.5

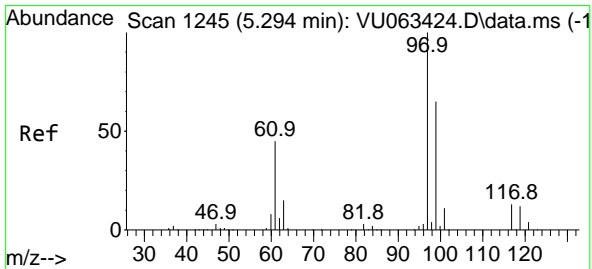
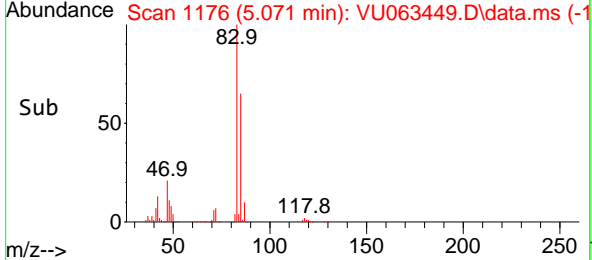
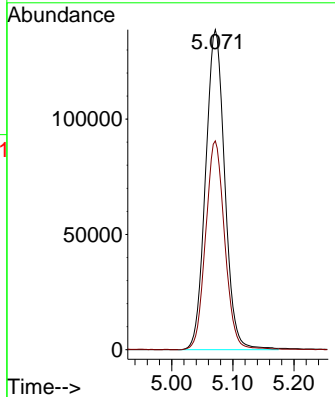
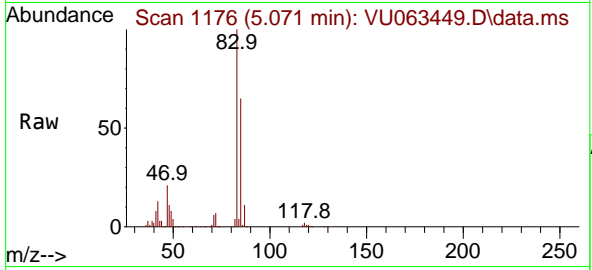




#27
 Chloroform
 Concen: 9.904 ug/l
 RT: 5.071 min Scan# 1176
 Delta R.T. 0.003 min
 Lab File: VU063449.D
 Acq: 25 Jun 2025 08:50

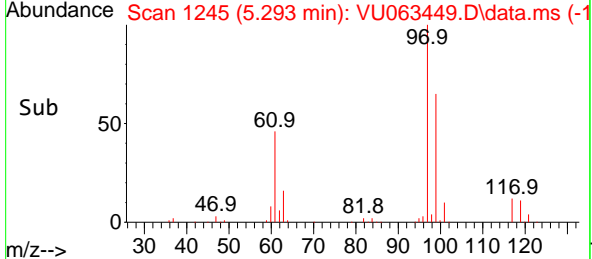
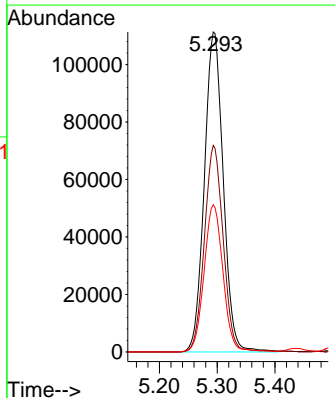
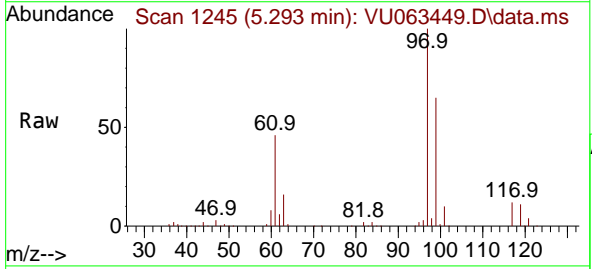
Instrument : MSVOA_U
 ClientSampleId : VSTDCCC010

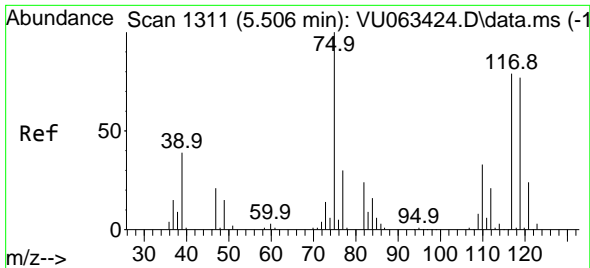
Tgt Ion: 83 Resp: 302723
 Ion Ratio Lower Upper
 83 100
 85 65.2 0.0 126.8



#28
 1,1,1-Trichloroethane
 Concen: 10.230 ug/l
 RT: 5.293 min Scan# 1245
 Delta R.T. -0.000 min
 Lab File: VU063449.D
 Acq: 25 Jun 2025 08:50

Tgt Ion: 97 Resp: 253539
 Ion Ratio Lower Upper
 97 100
 99 63.9 31.9 95.5
 61 46.1 22.9 68.7



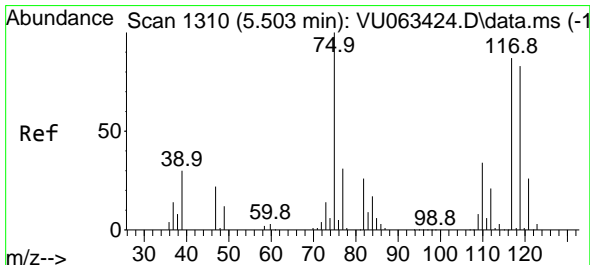
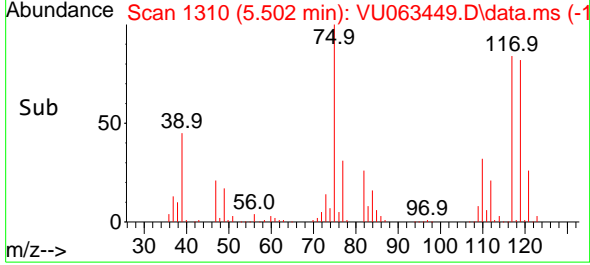
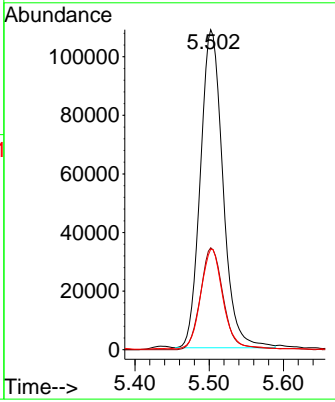
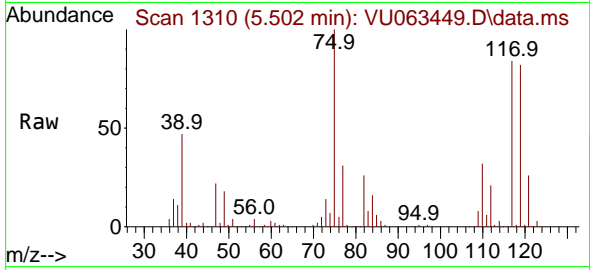


#29
 1,1-Dichloropropene
 Concen: 10.091 ug/l
 RT: 5.502 min Scan# 111
 Delta R.T. -0.004 min
 Lab File: VU063449.D
 Acq: 25 Jun 2025 08:50

Instrument : MSVOA_U
 ClientSampleId : VSTDCCC010

Tgt Ion: 75 Resp: 228466

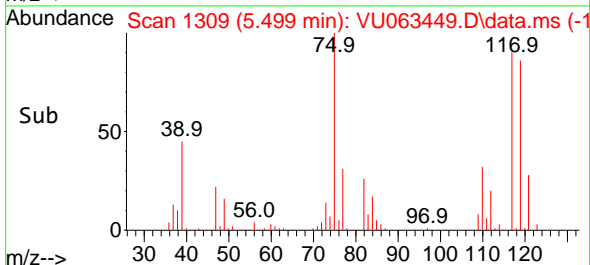
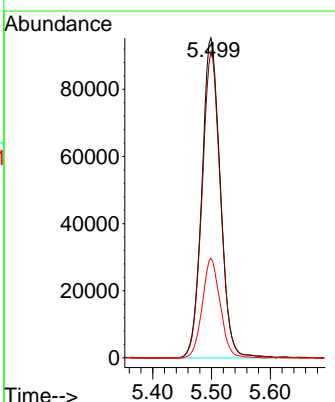
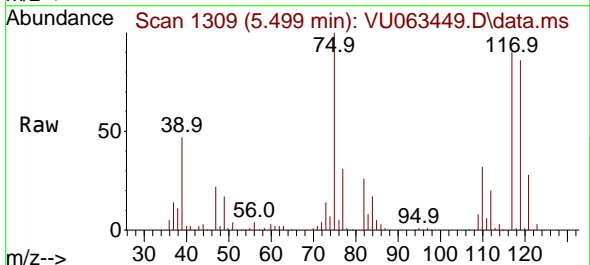
Ion	Ratio	Lower	Upper
75	100		
110	32.8	17.4	52.2
77	30.9	25.4	38.0

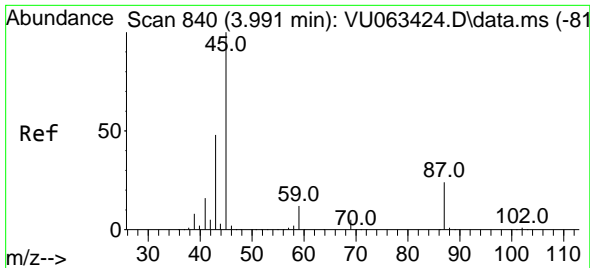


#30
 Carbon Tetrachloride
 Concen: 10.467 ug/l
 RT: 5.499 min Scan# 1309
 Delta R.T. -0.004 min
 Lab File: VU063449.D
 Acq: 25 Jun 2025 08:50

Tgt Ion: 117 Resp: 207178

Ion	Ratio	Lower	Upper
117	100		
119	95.5	76.7	115.1
121	31.2	24.3	36.5

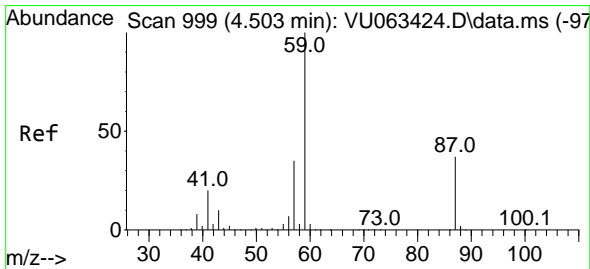
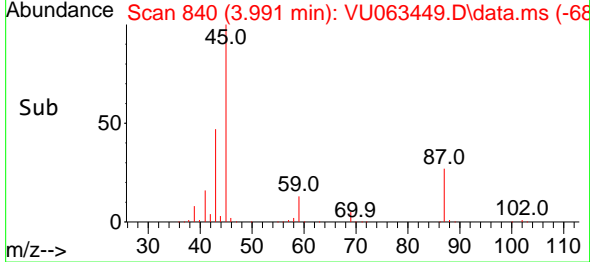
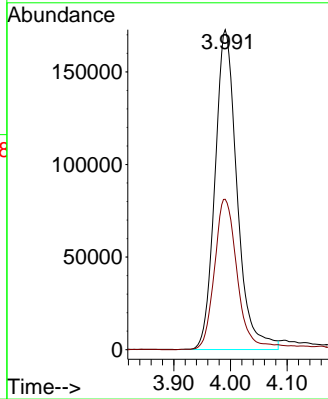
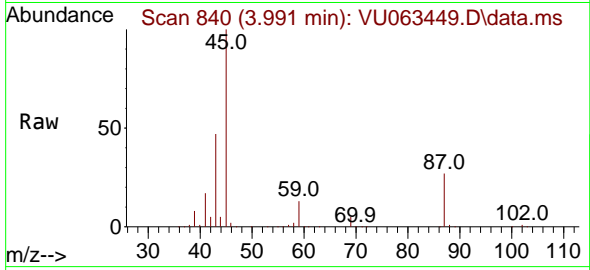




#31
 Isopropyl Ether
 Concen: 9.188 ug/l
 RT: 3.991 min Scan# 840
 Delta R.T. -0.000 min
 Lab File: VU063449.D
 Acq: 25 Jun 2025 08:50

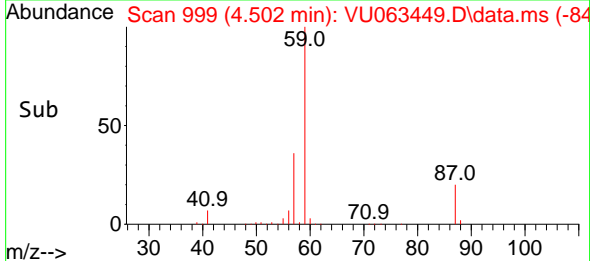
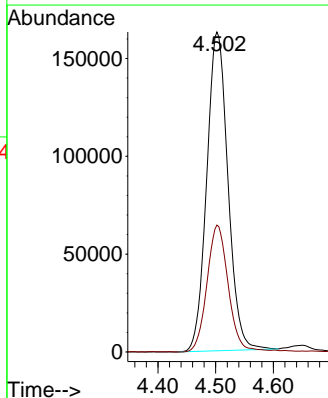
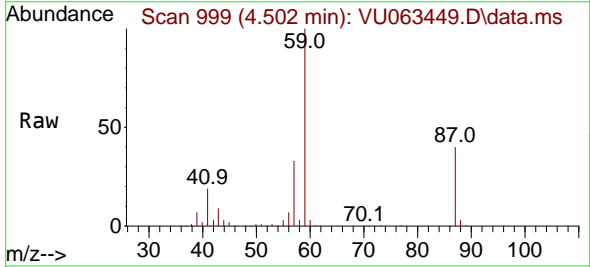
Instrument :
 MSVOA_U
 ClientSampleId :
 VSTDCCC010

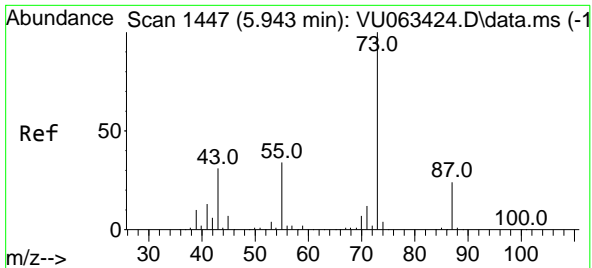
Tgt Ion: 45 Resp: 468001
 Ion Ratio Lower Upper
 45 100
 43 48.9 23.8 71.5



#32
 Ethyl-t-butyl ether
 Concen: 9.631 ug/l
 RT: 4.502 min Scan# 999
 Delta R.T. -0.001 min
 Lab File: VU063449.D
 Acq: 25 Jun 2025 08:50

Tgt Ion: 59 Resp: 415759
 Ion Ratio Lower Upper
 59 100
 87 39.1 29.9 44.9

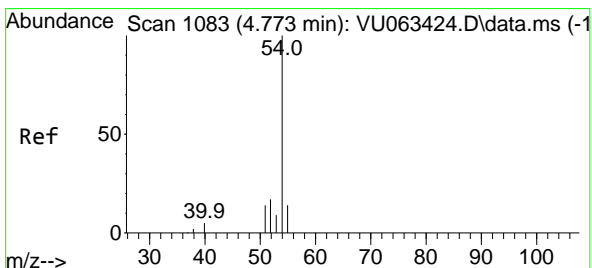
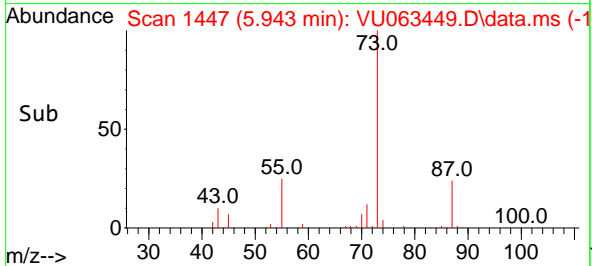
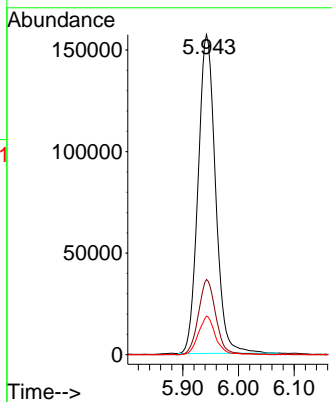
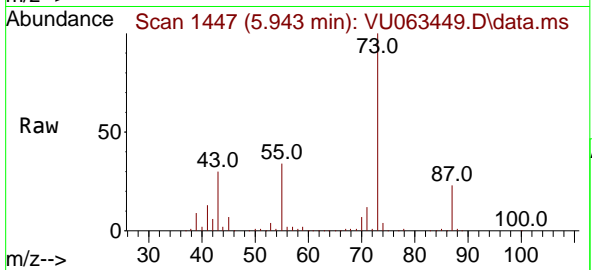




#33
 Tert-Amyl methyl ether
 Concen: 11.035 ug/l
 RT: 5.943 min Scan# 1447
 Delta R.T. -0.000 min
 Lab File: VU063449.D
 Acq: 25 Jun 2025 08:50

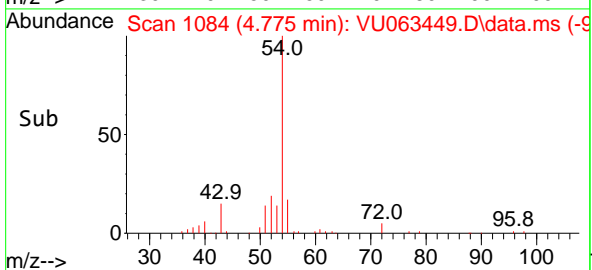
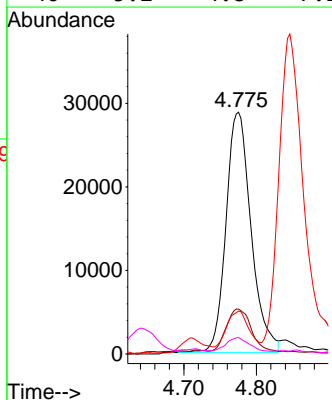
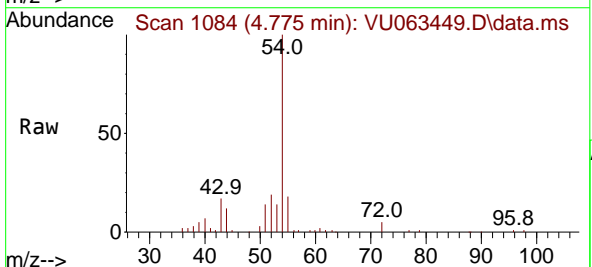
Instrument : MSVOA_U
 ClientSampleId : VSTDCCC010

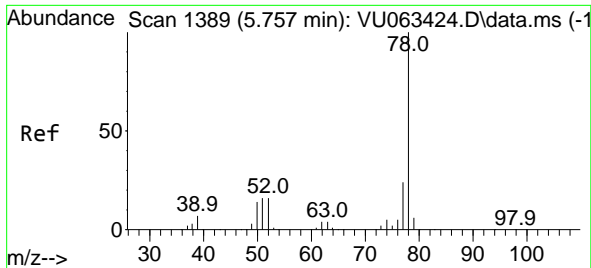
Tgt Ion: 73 Resp: 341001
 Ion Ratio Lower Upper
 73 100
 87 22.9 18.1 27.1
 71 11.5 10.0 15.0



#34
 Propionitrile
 Concen: 42.896 ug/l
 RT: 4.775 min Scan# 1084
 Delta R.T. 0.003 min
 Lab File: VU063449.D
 Acq: 25 Jun 2025 08:50

Tgt Ion: 54 Resp: 69044
 Ion Ratio Lower Upper
 54 100
 52 17.4 14.8 22.2
 55 15.7 12.2 18.2
 40 5.2 4.8 7.2

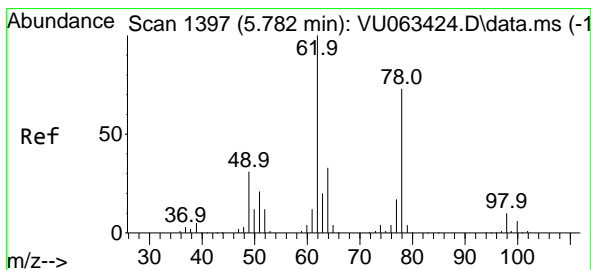
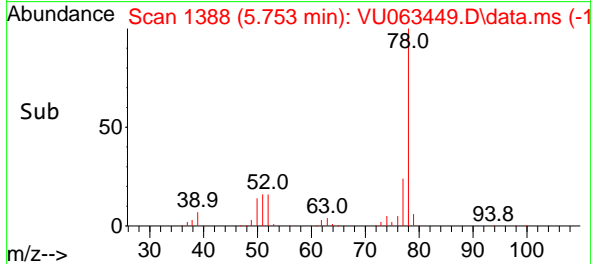
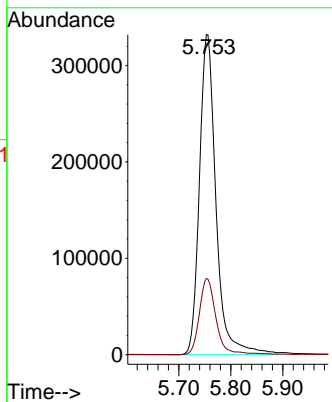
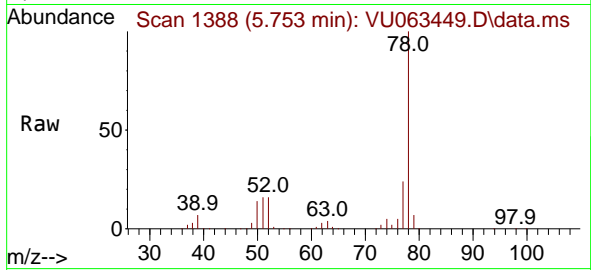




#35
Benzene
Concen: 10.736 ug/l
RT: 5.753 min Scan# 1388
Delta R.T. -0.004 min
Lab File: VU063449.D
Acq: 25 Jun 2025 08:50

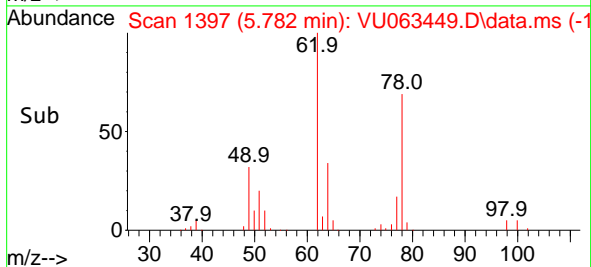
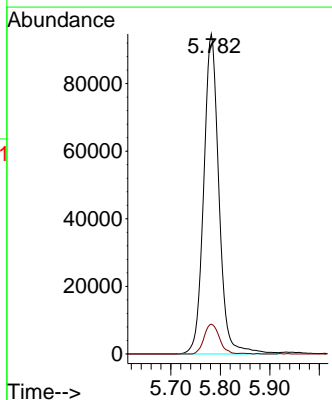
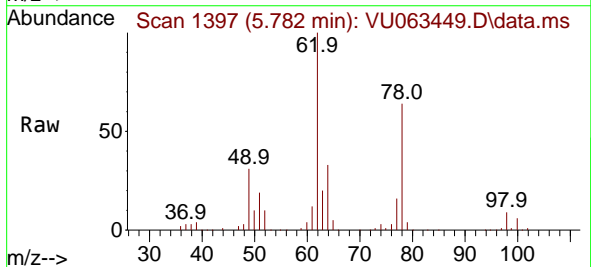
Instrument : MSVOA_U
ClientSampleId : VSTDCCC010

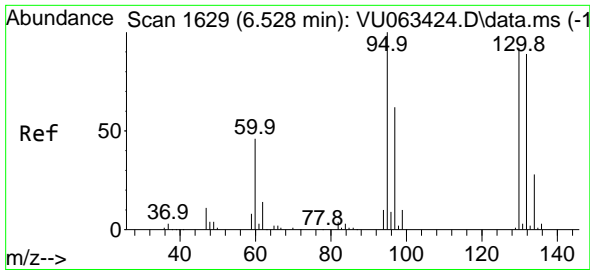
Tgt Ion: 78 Resp: 735290
Ion Ratio Lower Upper
78 100
77 23.8 19.4 29.2



#36
1,2-Dichloroethane
Concen: 10.095 ug/l
RT: 5.782 min Scan# 1397
Delta R.T. -0.000 min
Lab File: VU063449.D
Acq: 25 Jun 2025 08:50

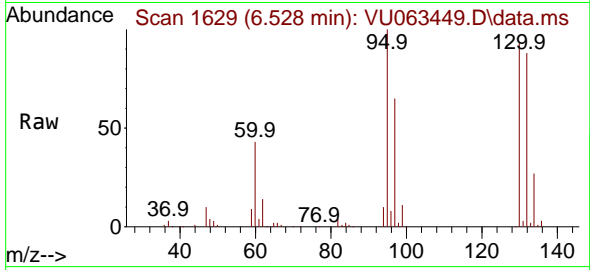
Tgt Ion: 62 Resp: 202108
Ion Ratio Lower Upper
62 100
98 9.3 7.1 10.7



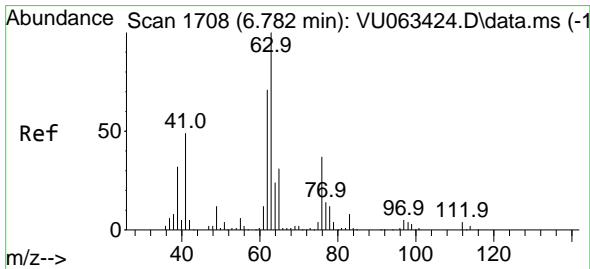
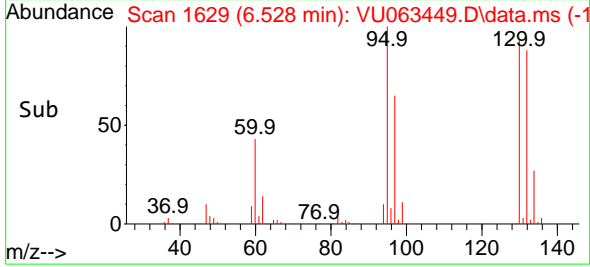
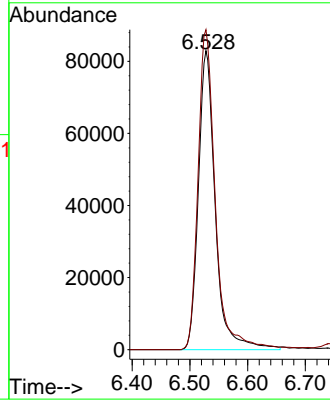


#37
 Trichloroethene
 Concen: 10.439 ug/l
 RT: 6.528 min Scan# 1629
 Delta R.T. -0.000 min
 Lab File: VU063449.D
 Acq: 25 Jun 2025 08:50

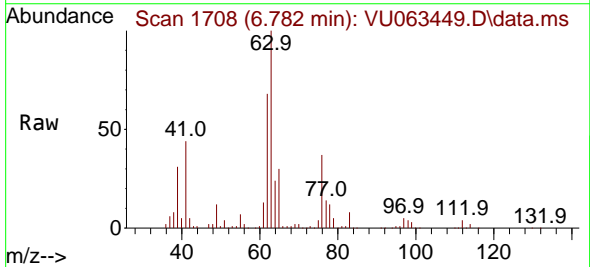
Instrument :
 MSVOA_U
 ClientSampleId :
 VSTDCCC010



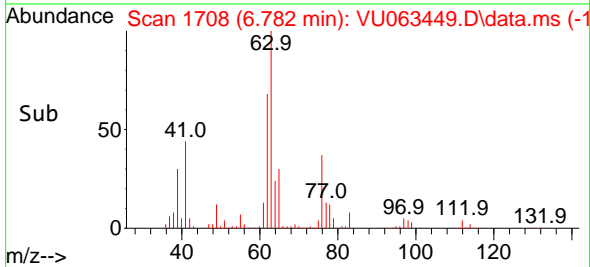
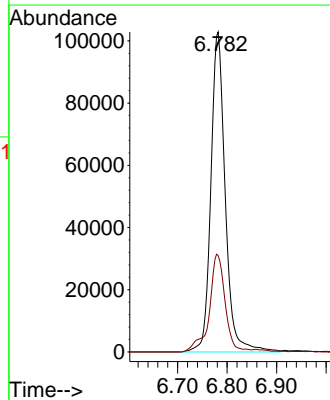
Tgt Ion:130 Resp: 168945
 Ion Ratio Lower Upper
 130 100
 95 107.0 87.2 130.8

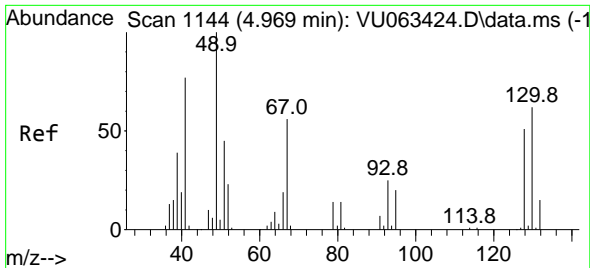


#38
 1,2-Dichloropropane
 Concen: 10.940 ug/l
 RT: 6.782 min Scan# 1708
 Delta R.T. -0.000 min
 Lab File: VU063449.D
 Acq: 25 Jun 2025 08:50



Tgt Ion: 63 Resp: 206930
 Ion Ratio Lower Upper
 63 100
 65 30.2 25.0 37.6



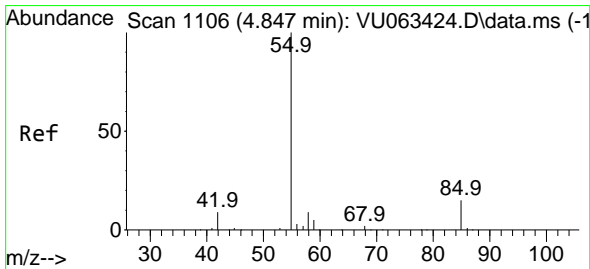
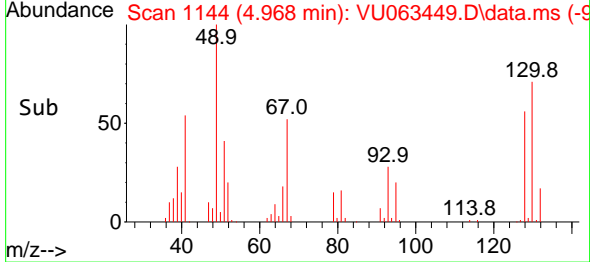
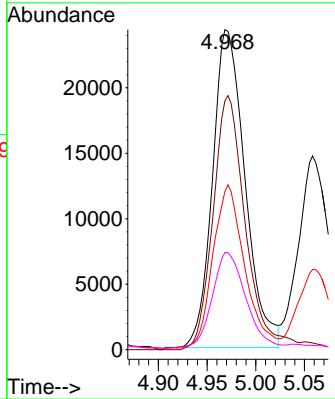
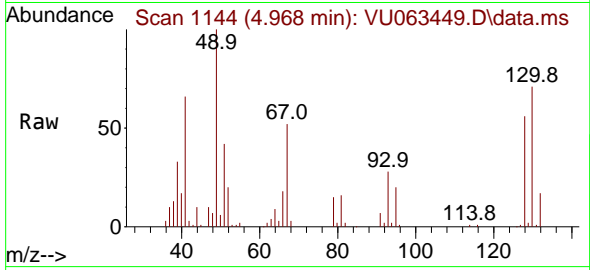


#39
 Methacrylonitrile
 Concen: 8.409 ug/l
 RT: 4.968 min Scan# 1144
 Delta R.T. -0.001 min
 Lab File: VU063449.D
 Acq: 25 Jun 2025 08:50

Instrument : MSVOA_U
 ClientSampleId : VSTDCCC010

Tgt Ion: 41 Resp: 56312

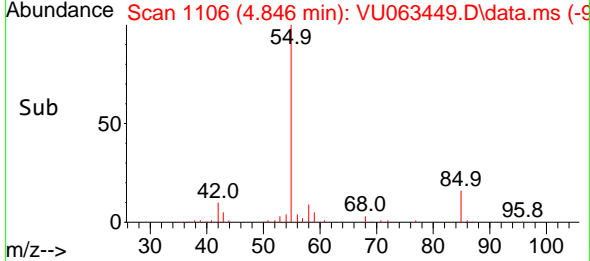
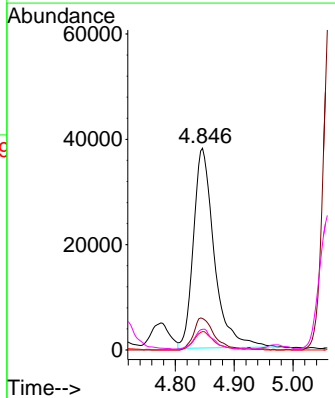
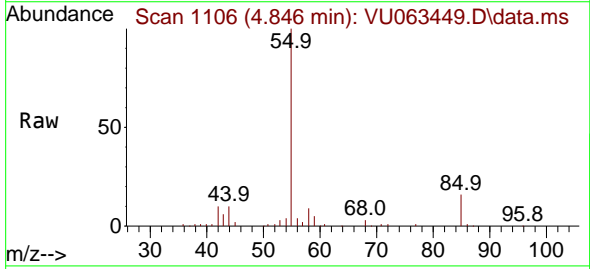
Ion	Ratio	Lower	Upper
41	100		
67	79.7	59.8	89.8
39	49.9	40.7	61.1
52	30.8	24.6	36.8

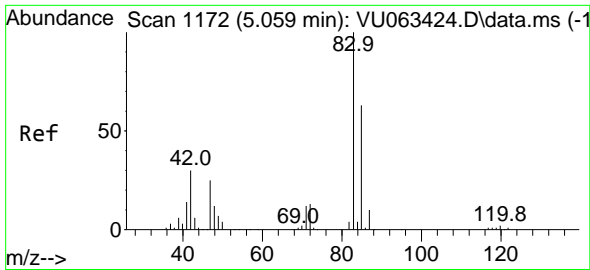


#40
 Methyl acrylate
 Concen: 9.913 ug/l
 RT: 4.846 min Scan# 1106
 Delta R.T. -0.000 min
 Lab File: VU063449.D
 Acq: 25 Jun 2025 08:50

Tgt Ion: 55 Resp: 93213

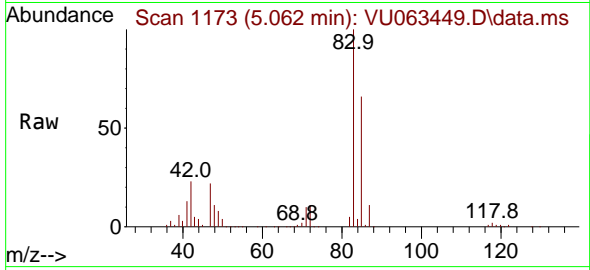
Ion	Ratio	Lower	Upper
55	100		
85	15.9	12.6	19.0
58	8.9	6.9	10.3
42	8.9	7.1	10.7



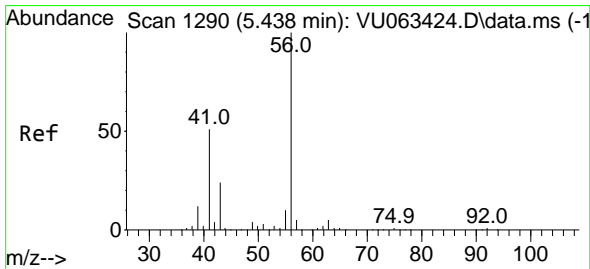
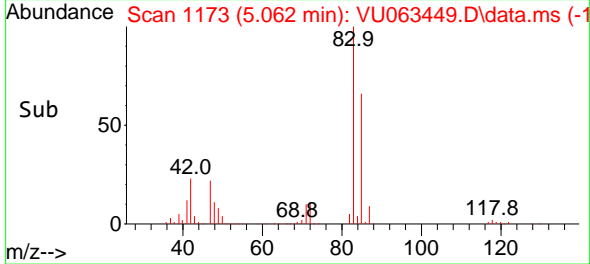
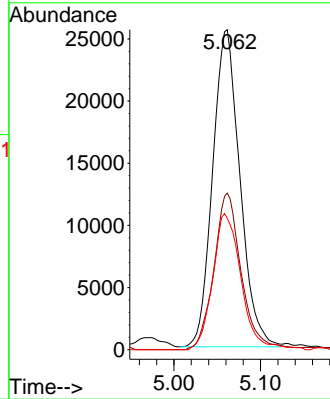


#41
 Tetrahydrofuran
 Concen: 15.486 ug/l
 RT: 5.062 min Scan# 1173
 Delta R.T. 0.003 min
 Lab File: VU063449.D
 Acq: 25 Jun 2025 08:50

Instrument : MSVOA_U
 ClientSampleId : VSTDCCC010

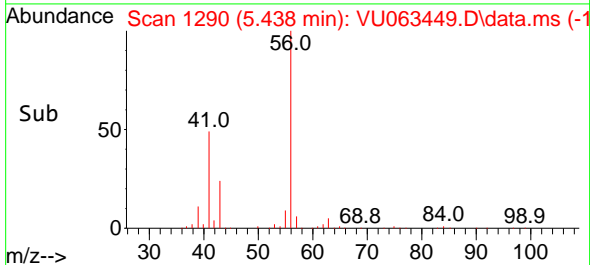
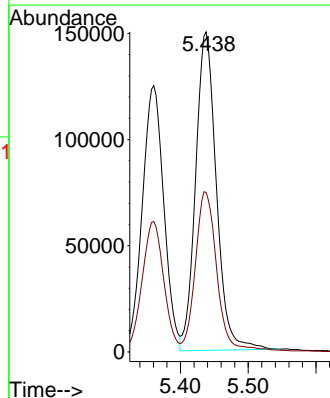
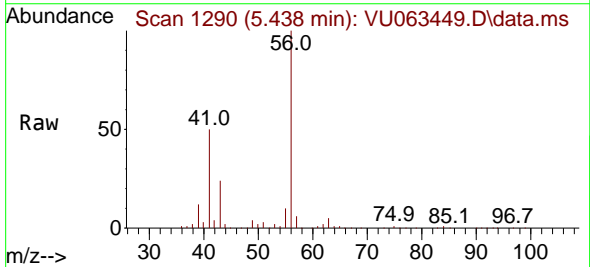


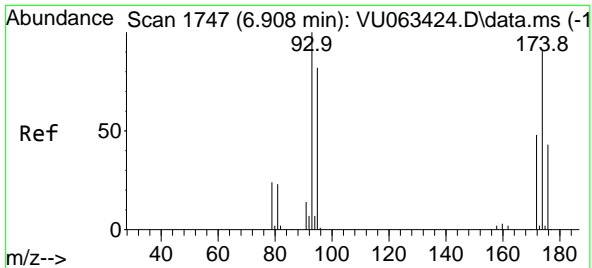
Tgt Ion: 42 Resp: 55789
 Ion Ratio Lower Upper
 42 100
 72 49.8 35.4 53.2
 71 44.5 31.4 47.0



#42
 1-Chlorobutane
 Concen: 9.940 ug/l
 RT: 5.438 min Scan# 1290
 Delta R.T. -0.000 min
 Lab File: VU063449.D
 Acq: 25 Jun 2025 08:50

Tgt Ion: 56 Resp: 319260
 Ion Ratio Lower Upper
 56 100
 41 51.8 26.4 79.0



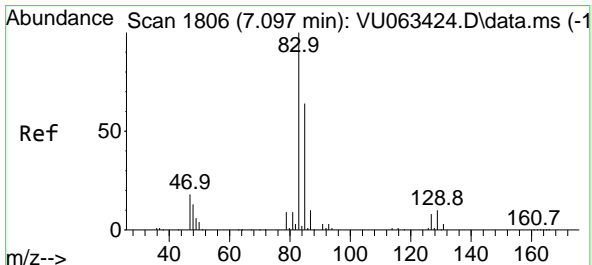
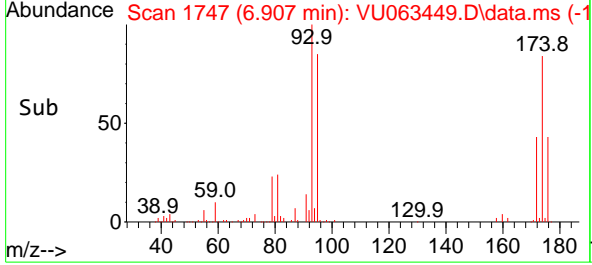
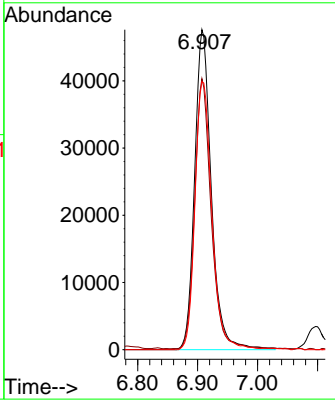
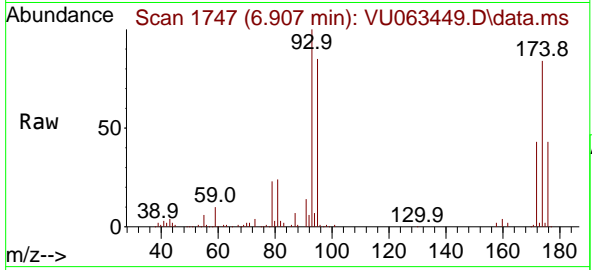


#43
 Dibromomethane
 Concen: 10.469 ug/l
 RT: 6.907 min Scan# 1747
 Delta R.T. -0.001 min
 Lab File: VU063449.D
 Acq: 25 Jun 2025 08:50

Instrument : MSVOA_U
 ClientSampleId : VSTDCCC010

Tgt Ion: 93 Resp: 92504

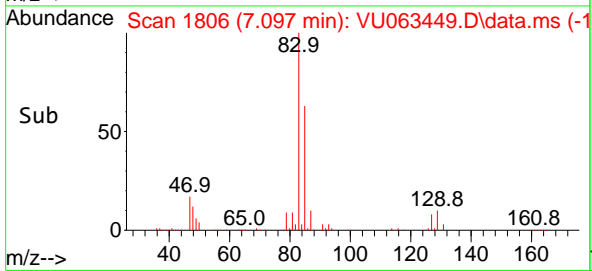
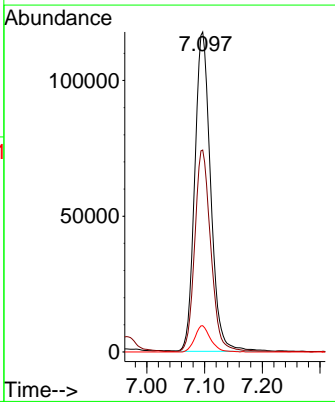
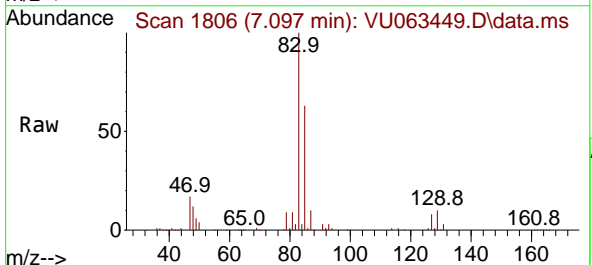
Ion	Ratio	Lower	Upper
93	100		
95	82.7	66.7	100.1
174	85.0	71.1	106.7

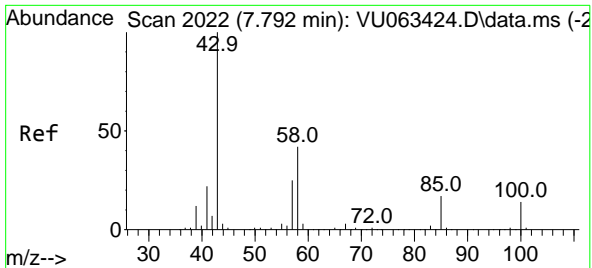


#44
 Bromodichloromethane
 Concen: 10.438 ug/l
 RT: 7.097 min Scan# 1806
 Delta R.T. -0.000 min
 Lab File: VU063449.D
 Acq: 25 Jun 2025 08:50

Tgt Ion: 83 Resp: 224663

Ion	Ratio	Lower	Upper
83	100		
85	63.0	51.4	77.2
127	8.2	6.6	10.0



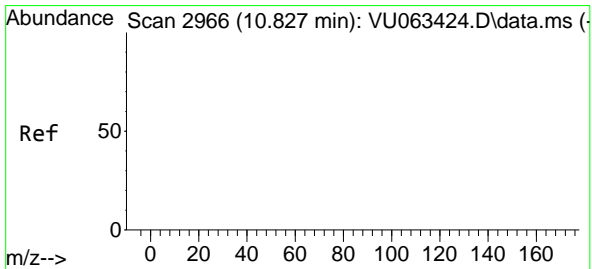
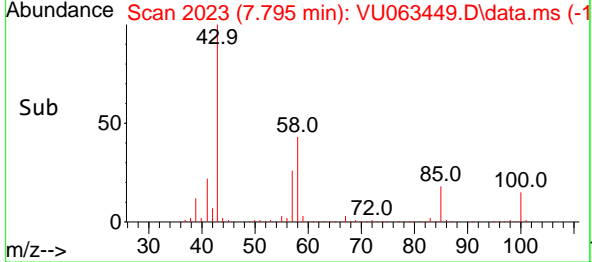
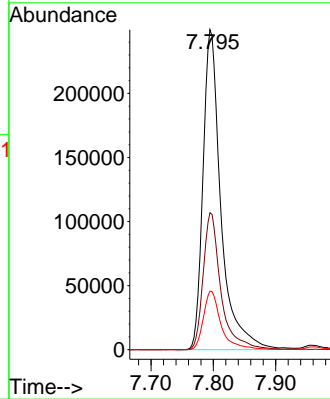
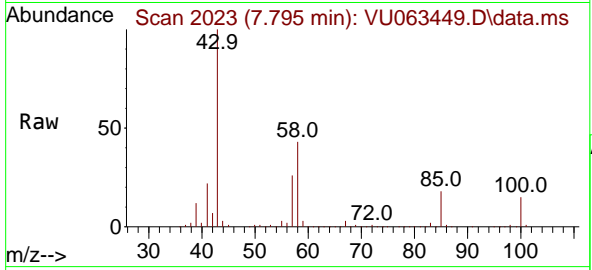


#45
 4-Methyl-2-Pentanone
 Concen: 52.736 ug/l
 RT: 7.795 min Scan# 2022
 Delta R.T. 0.003 min
 Lab File: VU063449.D
 Acq: 25 Jun 2025 08:50

Instrument : MSVOA_U
 ClientSampleId : VSTDCCC010

Tgt Ion: 43 Resp: 500195

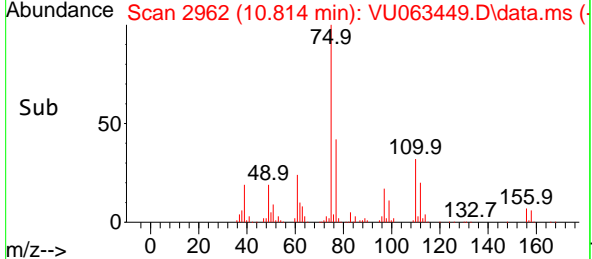
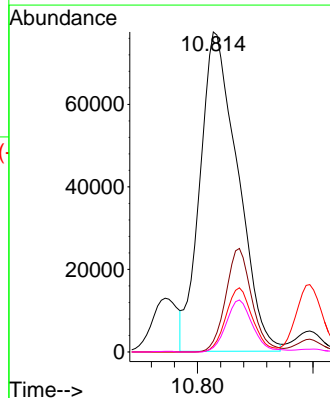
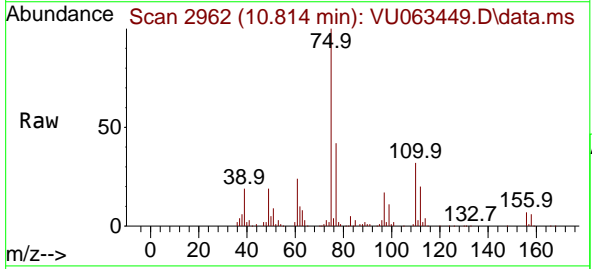
Ion	Ratio	Lower	Upper
43	100		
58	42.4	20.5	61.6
85	18.1	14.2	21.2

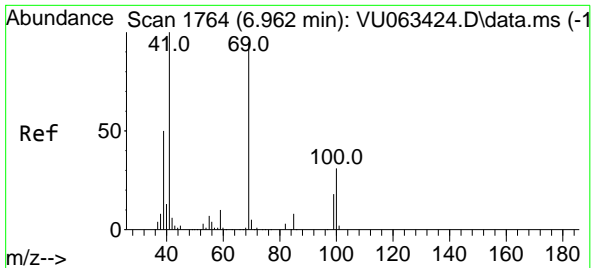


#46
 t-1,4-Dichloro-2-butene
 Concen: 56.192 ug/l
 RT: 10.814 min Scan# 2962
 Delta R.T. -0.013 min
 Lab File: VU063449.D
 Acq: 25 Jun 2025 08:50

Tgt Ion: 75 Resp: 175190

Ion	Ratio	Lower	Upper
75	100		
53	22.6	61.4	92.2#
89	14.2	39.2	58.8#
88	11.5	30.1	45.1#



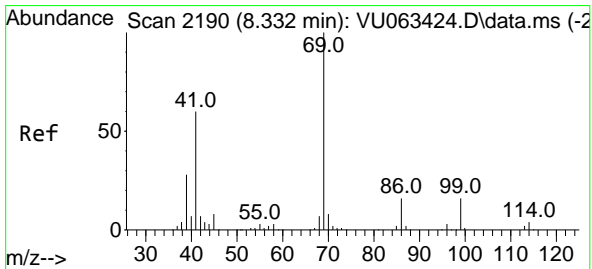
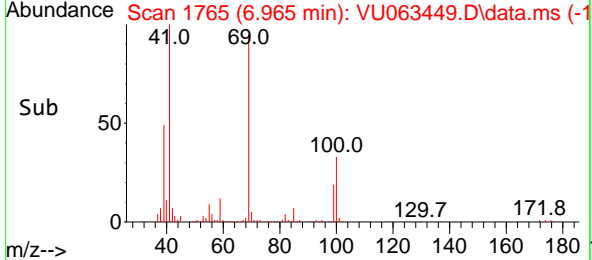
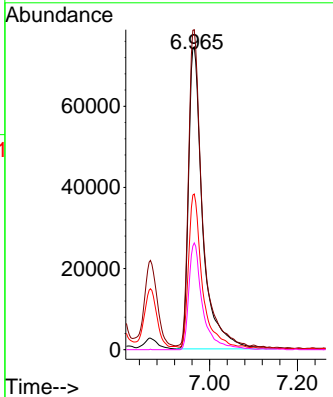
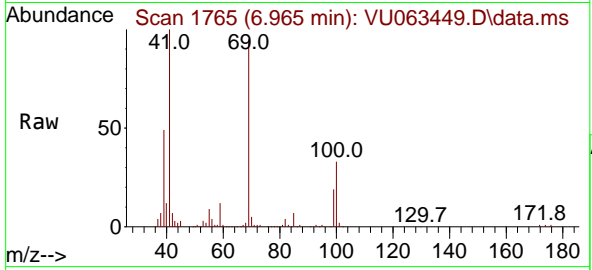


#47
 Methyl methacrylate
 Concen: 19.869 ug/l
 RT: 6.965 min Scan# 1765
 Delta R.T. 0.003 min
 Lab File: VU063449.D
 Acq: 25 Jun 2025 08:50

Instrument : MSVOA_U
 ClientSampleId : VSTDC010

Tgt Ion: 69 Resp: 167148

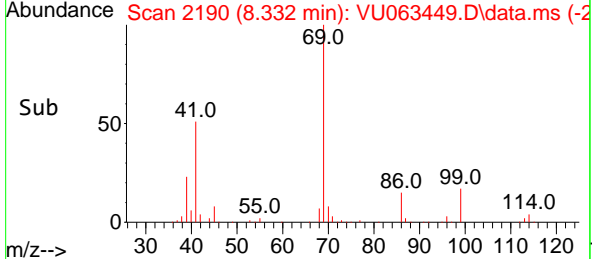
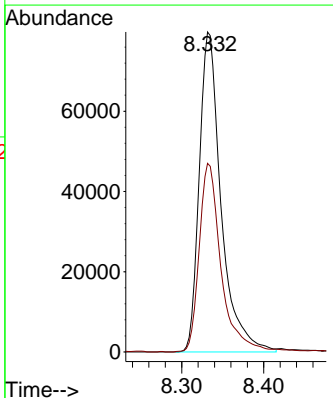
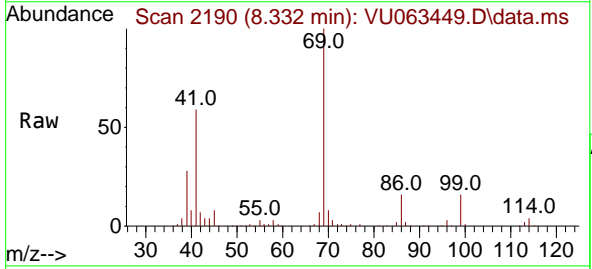
Ion	Ratio	Lower	Upper
69	100		
41	101.8	0.0	212.6
39	48.2	40.6	61.0
100	34.3	26.8	40.2

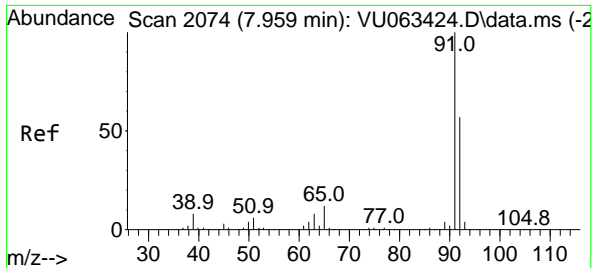


#48
 Ethyl methacrylate
 Concen: 9.885 ug/l
 RT: 8.332 min Scan# 2190
 Delta R.T. -0.001 min
 Lab File: VU063449.D
 Acq: 25 Jun 2025 08:50

Tgt Ion: 69 Resp: 147589

Ion	Ratio	Lower	Upper
69	100		
41	59.5	30.6	92.0

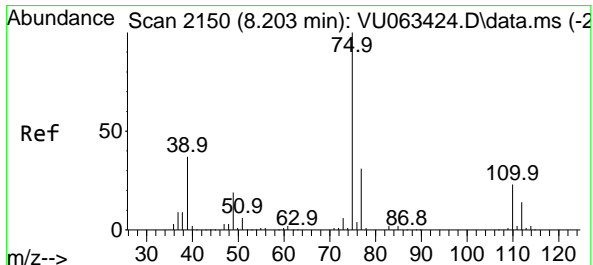
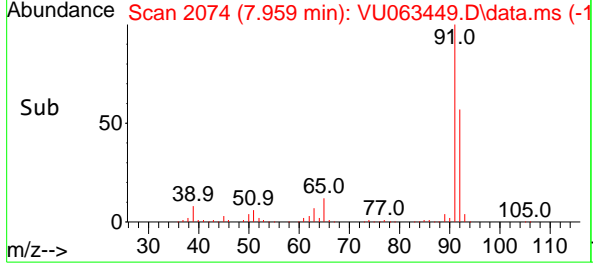
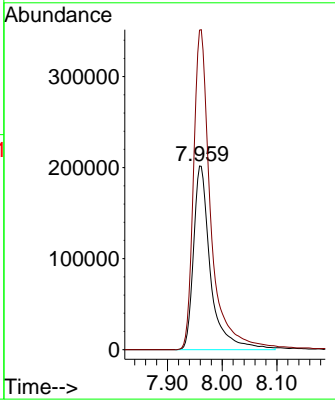
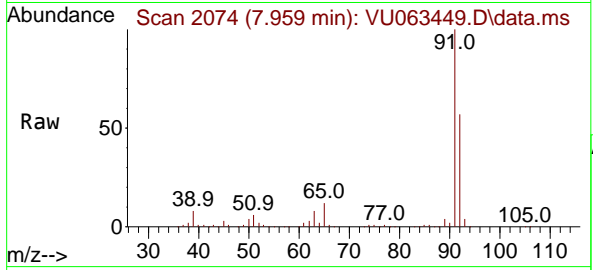




#49
 Toluene
 Concen: 11.613 ug/l
 RT: 7.959 min Scan# 2074
 Delta R.T. -0.000 min
 Lab File: VU063449.D
 Acq: 25 Jun 2025 08:50

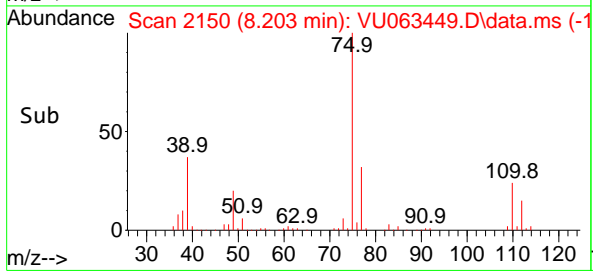
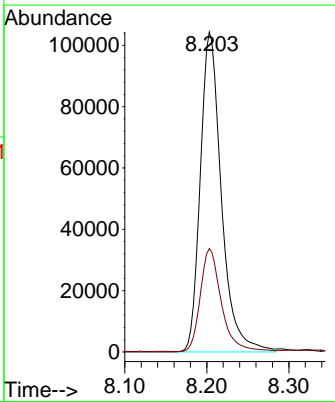
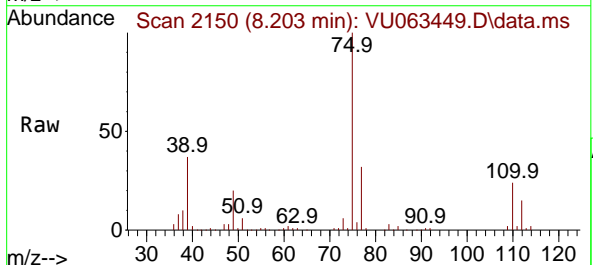
Instrument : MSVOA_U
 ClientSampleId : VSTDCCC010

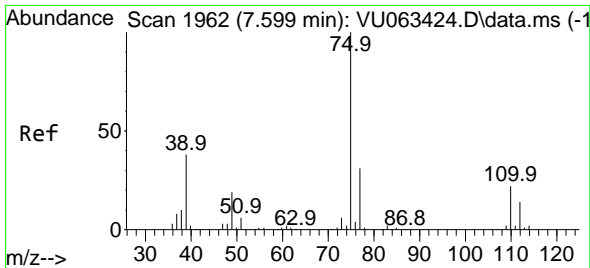
Tgt Ion: 92 Resp: 436632
 Ion Ratio Lower Upper
 92 100
 91 177.2 142.0 213.0



#50
 t-1,3-Dichloropropene
 Concen: 12.017 ug/l
 RT: 8.203 min Scan# 2150
 Delta R.T. -0.000 min
 Lab File: VU063449.D
 Acq: 25 Jun 2025 08:50

Tgt Ion: 75 Resp: 186519
 Ion Ratio Lower Upper
 75 100
 77 32.2 24.5 36.7





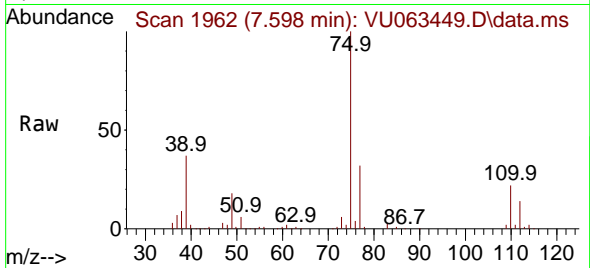
#51
 cis-1,3-Dichloropropene
 Concen: 11.507 ug/l
 RT: 7.598 min Scan# 1962
 Delta R.T. -0.000 min
 Lab File: VU063449.D
 Acq: 25 Jun 2025 08:50

Instrument :

MSVOA_U

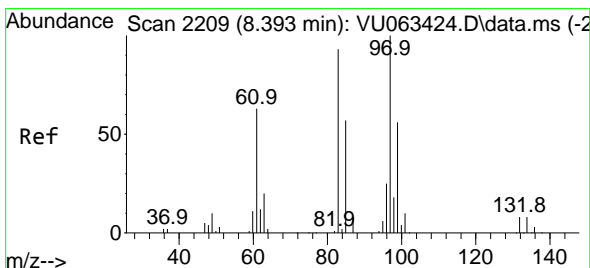
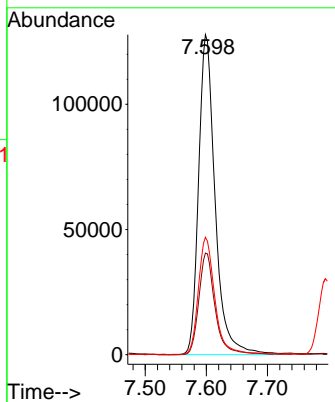
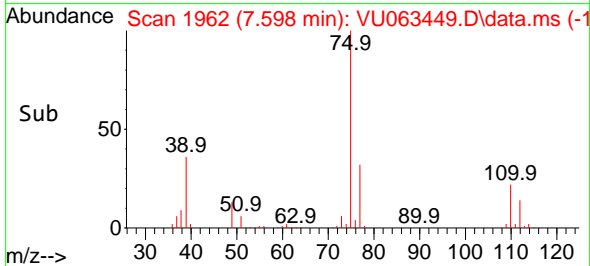
ClientSampleId :

VSTDCCC010

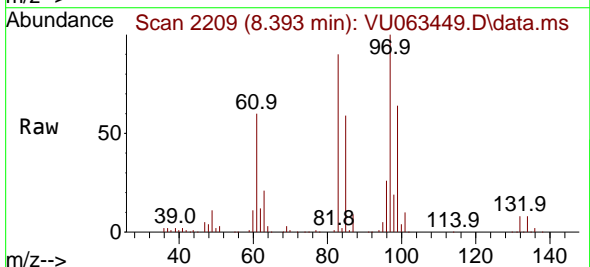


Tgt Ion: 75 Resp: 239895

Ion	Ratio	Lower	Upper
75	100		
77	31.7	24.8	37.2
39	36.6	30.7	46.1

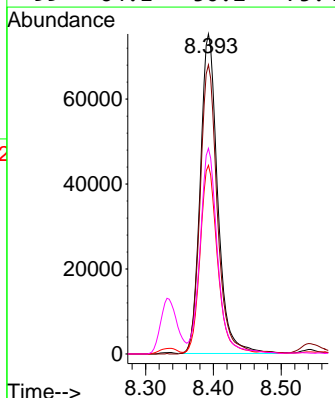
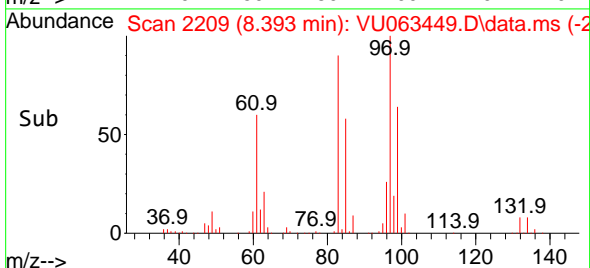


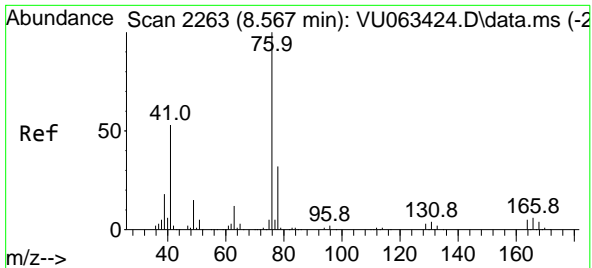
#52
 1,1,2-Trichloroethane
 Concen: 10.421 ug/l
 RT: 8.393 min Scan# 2209
 Delta R.T. -0.000 min
 Lab File: VU063449.D
 Acq: 25 Jun 2025 08:50



Tgt Ion: 97 Resp: 134608

Ion	Ratio	Lower	Upper
97	100		
83	90.5	74.1	111.1
85	58.7	45.8	68.8
99	64.1	50.2	75.4

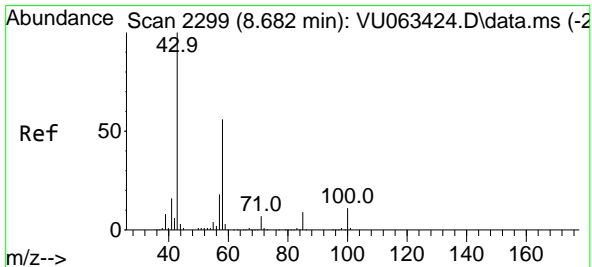
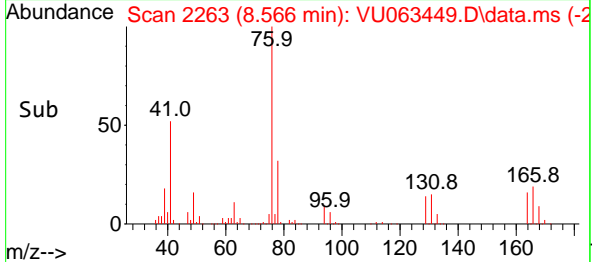
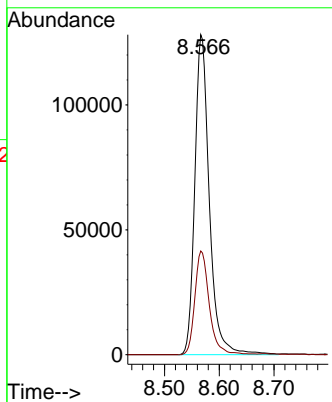
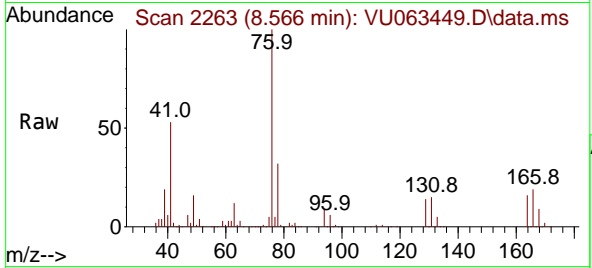




#53
 1,3-Dichloropropane
 Concen: 10.615 ug/l
 RT: 8.566 min Scan# 21
 Delta R.T. -0.000 min
 Lab File: VU063449.D
 Acq: 25 Jun 2025 08:50

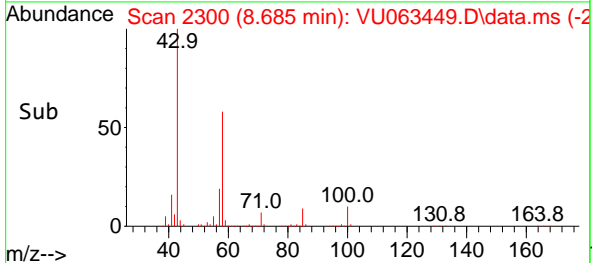
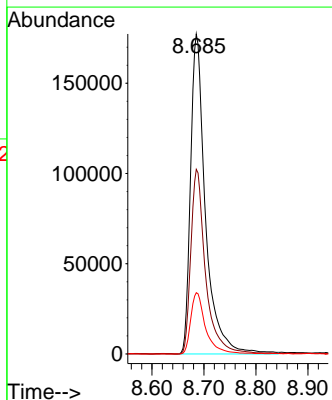
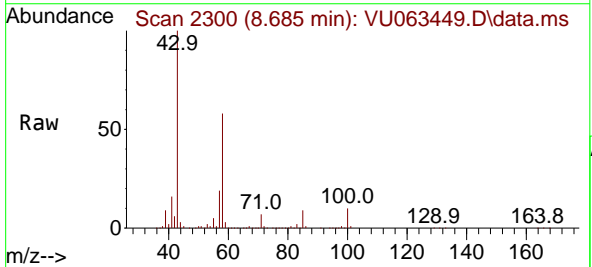
Instrument :
 MSVOA_U
 ClientSampleId :
 VSTDCCC010

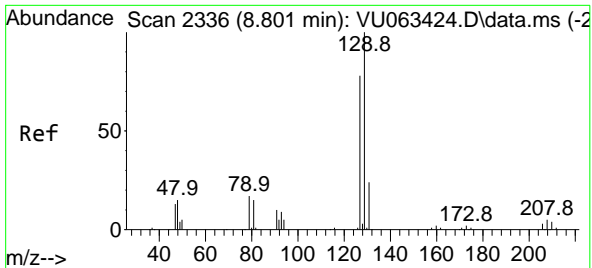
Tgt Ion: 76 Resp: 235907
 Ion Ratio Lower Upper
 76 100
 78 32.4 25.7 38.5



#54
 2-Hexanone
 Concen: 48.045 ug/l
 RT: 8.685 min Scan# 2300
 Delta R.T. 0.003 min
 Lab File: VU063449.D
 Acq: 25 Jun 2025 08:50

Tgt Ion: 43 Resp: 354154
 Ion Ratio Lower Upper
 43 100
 58 56.9 36.9 76.9
 57 19.2 0.0 38.8

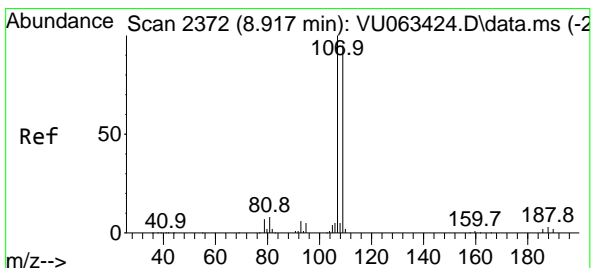
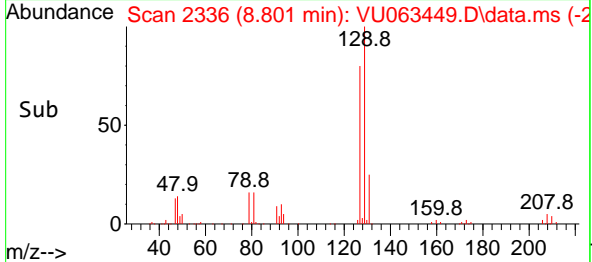
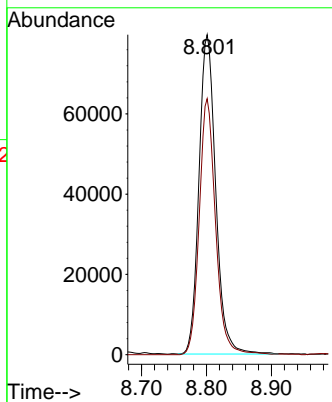
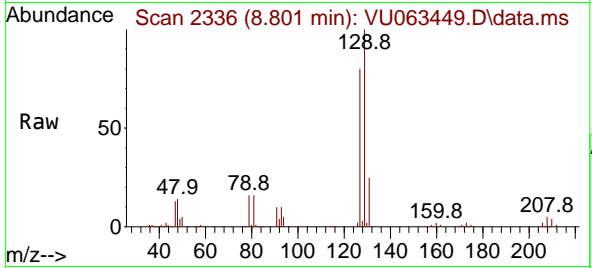




#55
 Dibromochloromethane
 Concen: 10.729 ug/l
 RT: 8.801 min Scan# 21
 Delta R.T. -0.000 min
 Lab File: VU063449.D
 Acq: 25 Jun 2025 08:50

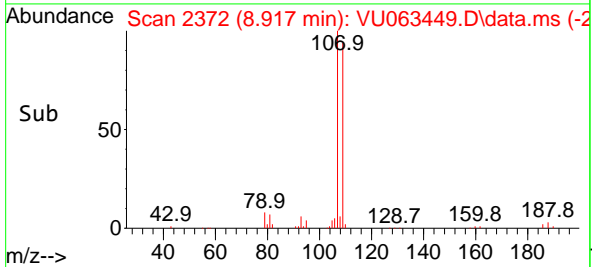
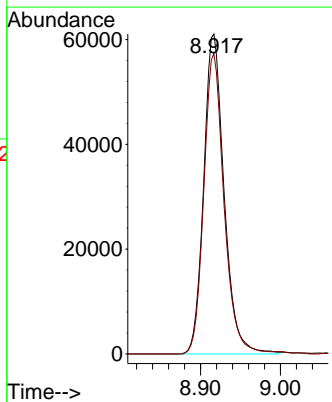
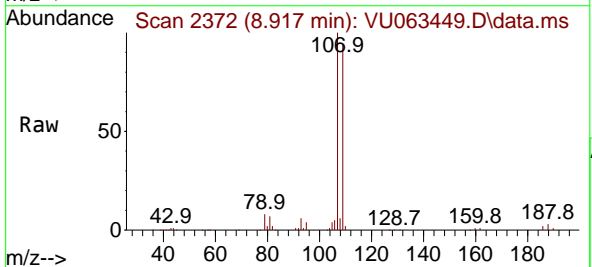
Instrument :
 MSVOA_U
 ClientSampleId :
 VSTDCCC010

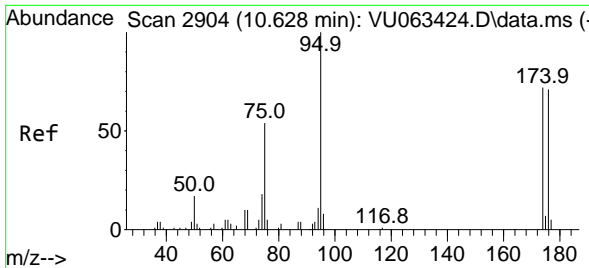
Tgt Ion:129 Resp: 142986
 Ion Ratio Lower Upper
 129 100
 127 78.2 62.6 93.8



#56
 1,2-Dibromoethane
 Concen: 10.351 ug/l
 RT: 8.917 min Scan# 2372
 Delta R.T. -0.000 min
 Lab File: VU063449.D
 Acq: 25 Jun 2025 08:50

Tgt Ion:107 Resp: 108391
 Ion Ratio Lower Upper
 107 100
 109 92.9 0.0 188.0



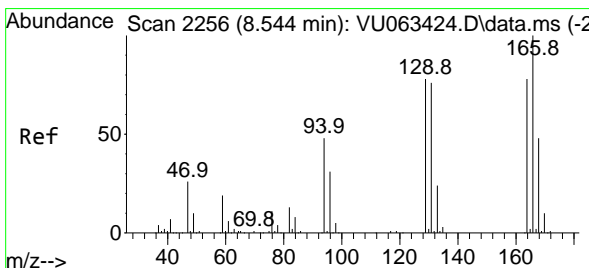
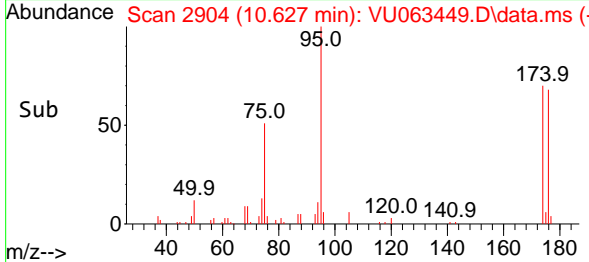
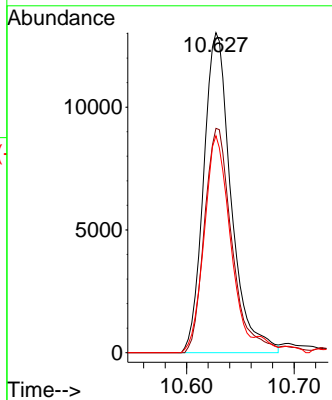
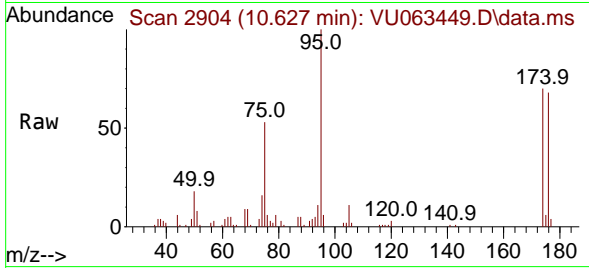


#57
 4-Bromofluorobenzene
 Concen: 1.200 ug/l
 RT: 10.627 min Scan# 2904
 Delta R.T. -0.001 min
 Lab File: VU063449.D
 Acq: 25 Jun 2025 08:50

Instrument : MSVOA_U
 ClientSampleId : VSTDCCC010

Tgt Ion: 95 Resp: 23153

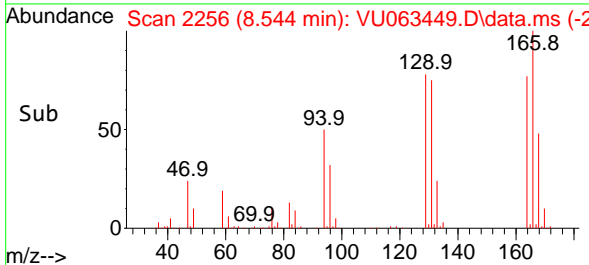
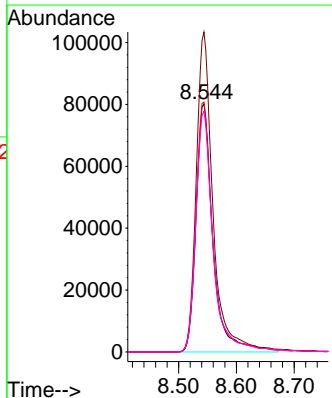
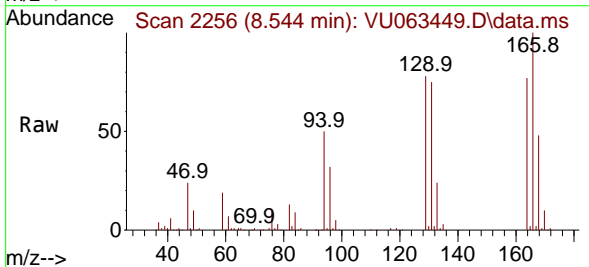
Ion	Ratio	Lower	Upper
95	100		
174	70.3	59.4	89.2
176	64.1	57.8	86.6

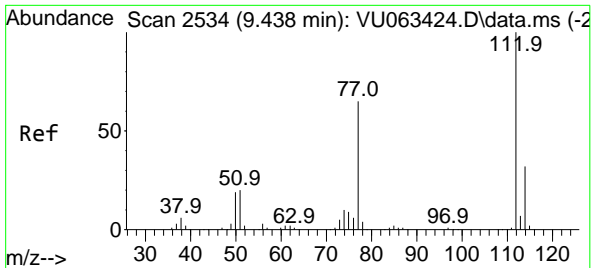


#58
 Tetrachloroethene
 Concen: 10.346 ug/l
 RT: 8.544 min Scan# 2256
 Delta R.T. -0.000 min
 Lab File: VU063449.D
 Acq: 25 Jun 2025 08:50

Tgt Ion: 164 Resp: 164257

Ion	Ratio	Lower	Upper
164	100		
166	129.1	102.8	154.2
129	100.8	80.2	120.2
131	97.1	77.9	116.9





#59
 Chlorobenzene
 Concen: 10.936 ug/l
 RT: 9.441 min Scan# 2111
 Delta R.T. 0.003 min
 Lab File: VU063449.D
 Acq: 25 Jun 2025 08:50

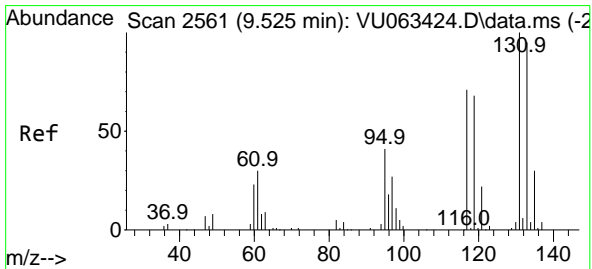
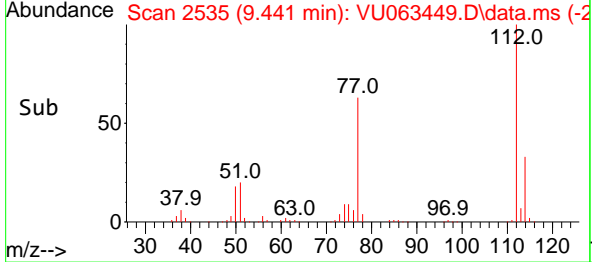
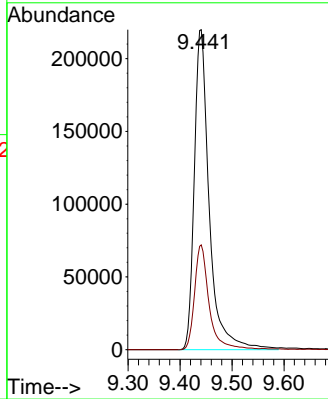
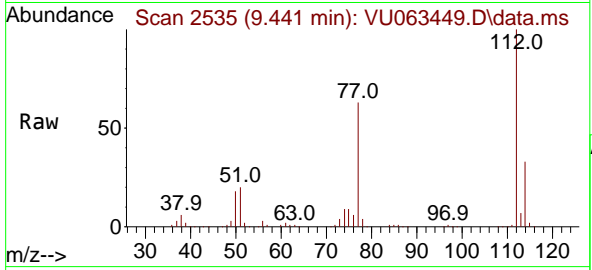
Instrument :

MSVOA_U

ClientSampleId :

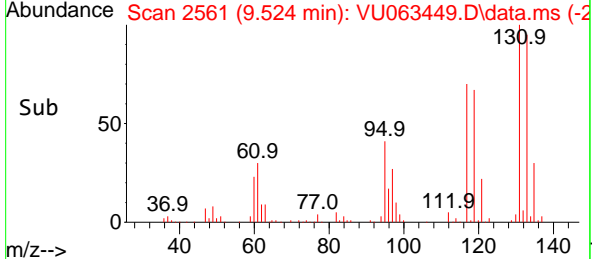
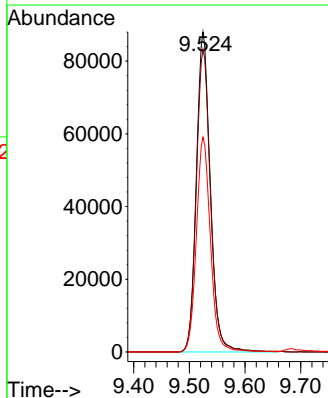
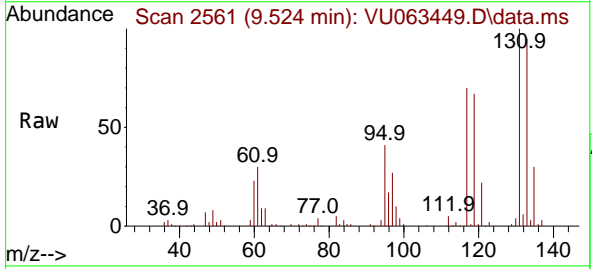
VSTDCCC010

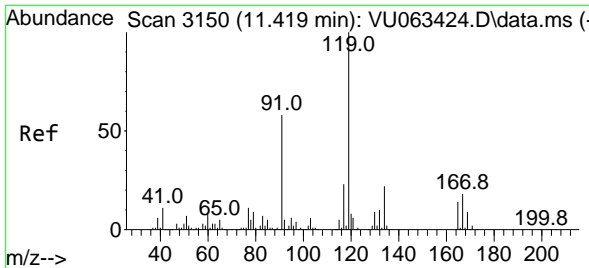
Tgt Ion:112 Resp: 440205
 Ion Ratio Lower Upper
 112 100
 114 32.7 25.7 38.5



#60
 1,1,1,2-Tetrachloroethane
 Concen: 10.616 ug/l
 RT: 9.524 min Scan# 2561
 Delta R.T. -0.000 min
 Lab File: VU063449.D
 Acq: 25 Jun 2025 08:50

Tgt Ion:131 Resp: 153810
 Ion Ratio Lower Upper
 131 100
 133 95.7 76.1 114.1
 119 67.5 53.7 80.5

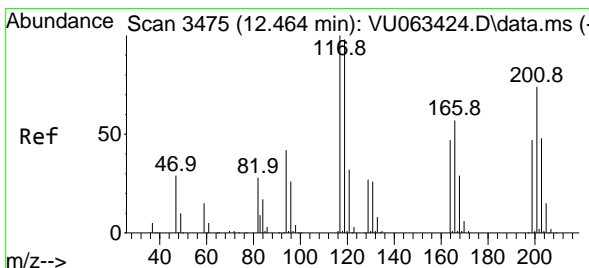
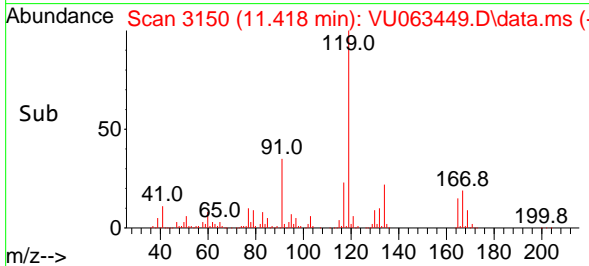
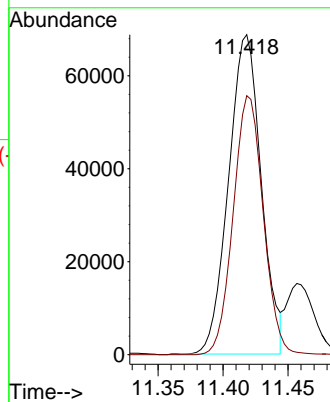
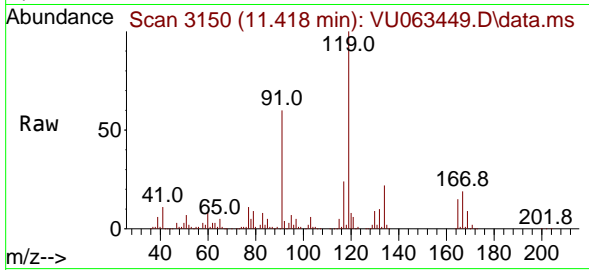




#61
 Pentachloroethane
 Concen: 10.183 ug/l
 RT: 11.418 min Scan# 3150
 Delta R.T. -0.001 min
 Lab File: VU063449.D
 Acq: 25 Jun 2025 08:50

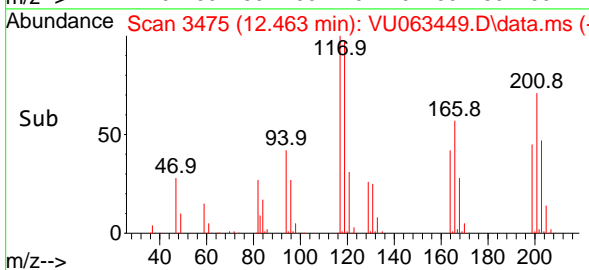
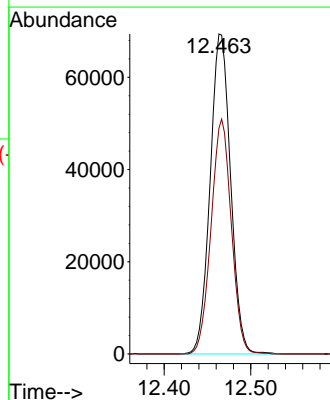
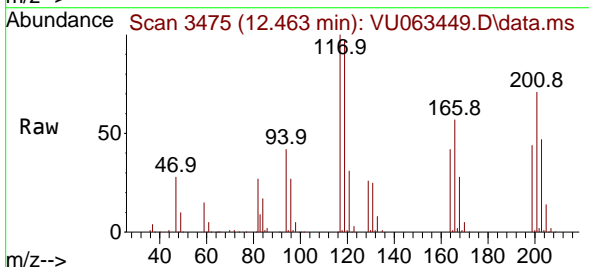
Instrument : MSVOA_U
 ClientSampleId : VSTDCCC010

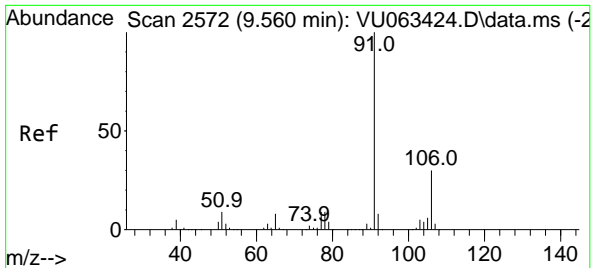
Tgt Ion:117 Resp: 120196
 Ion Ratio Lower Upper
 117 100
 167 74.8 58.1 87.1



#62
 Hexachloroethane
 Concen: 10.744 ug/l
 RT: 12.463 min Scan# 3475
 Delta R.T. -0.000 min
 Lab File: VU063449.D
 Acq: 25 Jun 2025 08:50

Tgt Ion:117 Resp: 114058
 Ion Ratio Lower Upper
 117 100
 201 72.5 60.4 90.6

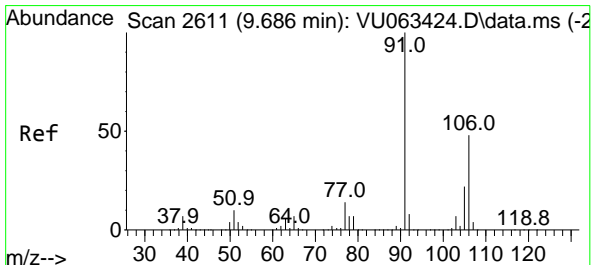
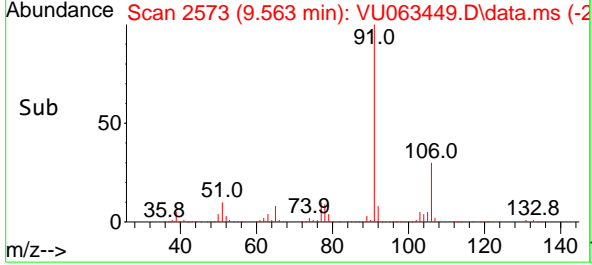
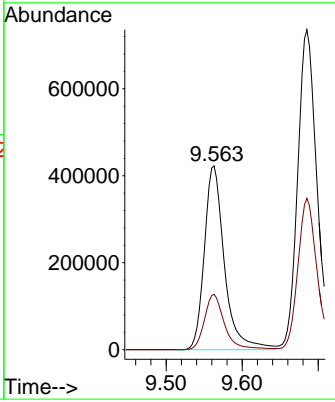
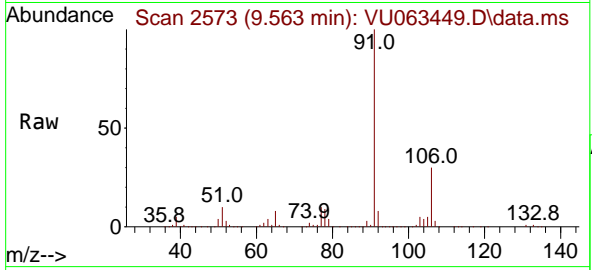




#63
 Ethyl Benzene
 Concen: 12.034 ug/l
 RT: 9.563 min Scan# 2572
 Delta R.T. 0.003 min
 Lab File: VU063449.D
 Acq: 25 Jun 2025 08:50

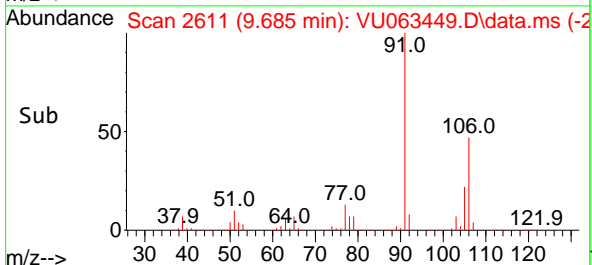
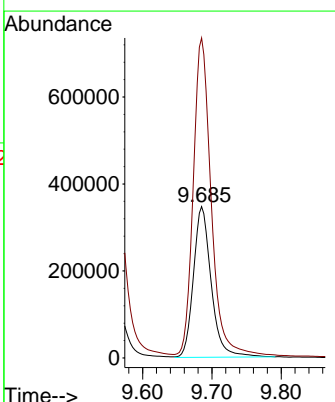
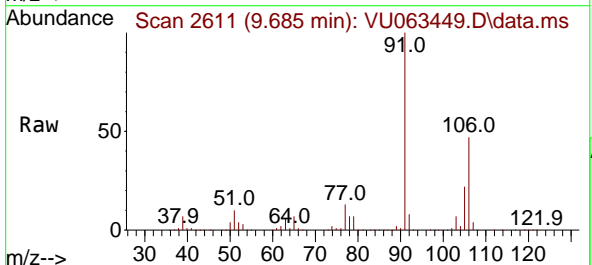
Instrument : MSVOA_U
 ClientSampleId : VSTDCCC010

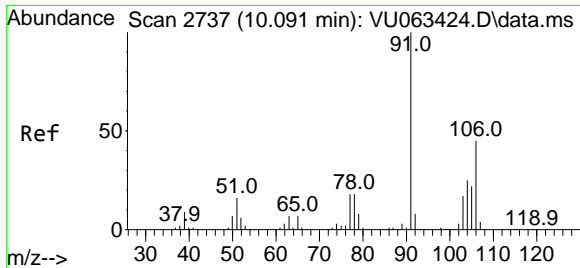
Tgt Ion: 91 Resp: 776594
 Ion Ratio Lower Upper
 91 100
 106 30.1 24.2 36.2



#64
 m/p-Xylenes
 Concen: 20.263 ug/l
 RT: 9.685 min Scan# 2611
 Delta R.T. -0.001 min
 Lab File: VU063449.D
 Acq: 25 Jun 2025 08:50

Tgt Ion: 106 Resp: 618471
 Ion Ratio Lower Upper
 106 100
 91 215.8 169.9 254.9

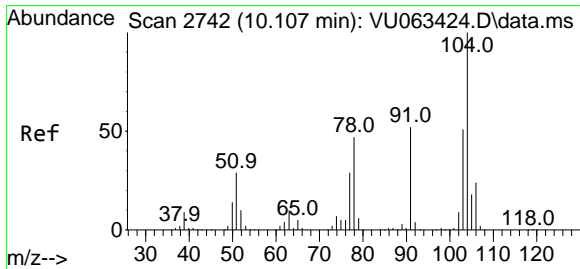
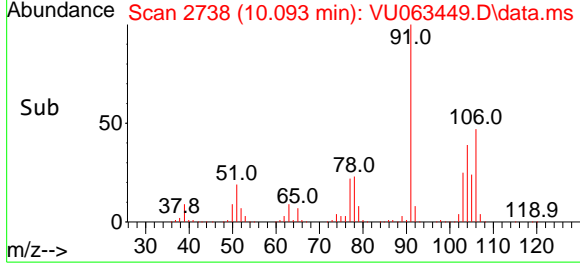
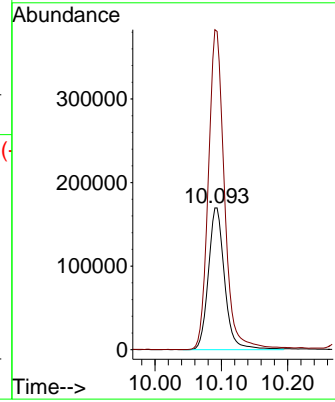
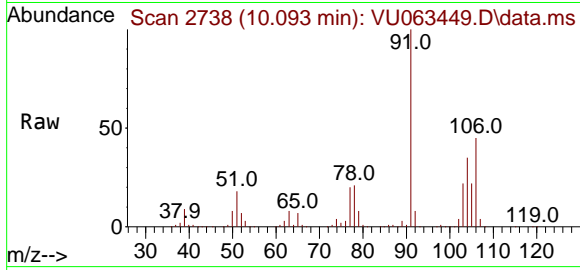




#65
 o-Xylene
 Concen: 11.778 ug/l
 RT: 10.093 min Scan# 2738
 Delta R.T. 0.002 min
 Lab File: VU063449.D
 Acq: 25 Jun 2025 08:50

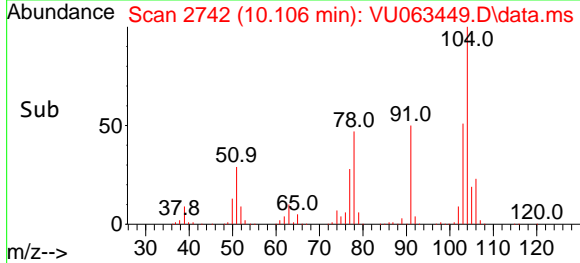
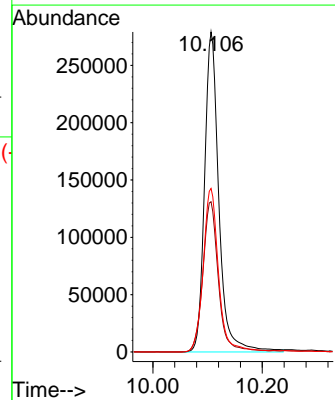
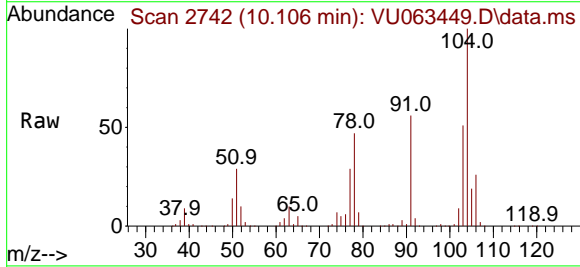
Instrument : MSVOA_U
 ClientSampleId : VSTDCCC010

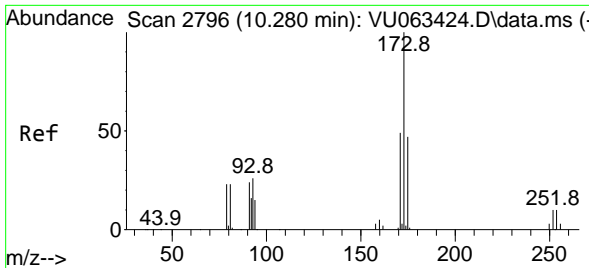
Tgt Ion:106 Resp: 288753
 Ion Ratio Lower Upper
 106 100
 91 224.2 110.8 332.3



#66
 Styrene
 Concen: 10.335 ug/l
 RT: 10.106 min Scan# 2742
 Delta R.T. -0.001 min
 Lab File: VU063449.D
 Acq: 25 Jun 2025 08:50

Tgt Ion:104 Resp: 507195
 Ion Ratio Lower Upper
 104 100
 78 50.9 41.6 62.4
 103 54.8 44.6 67.0



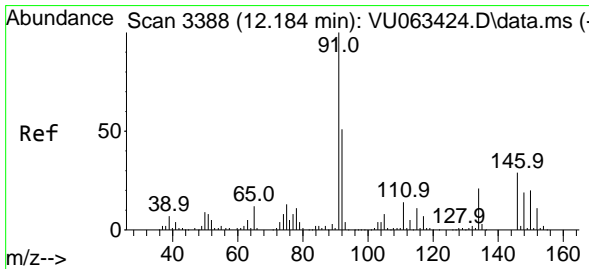
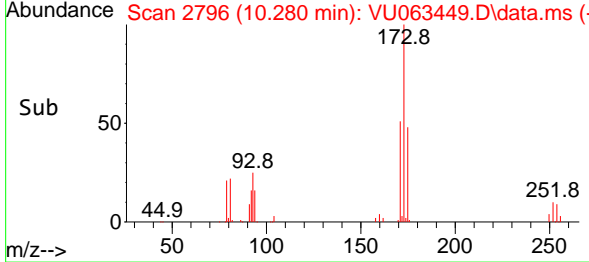
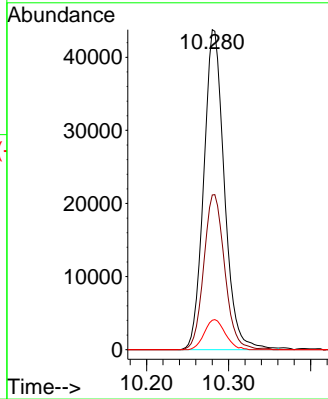
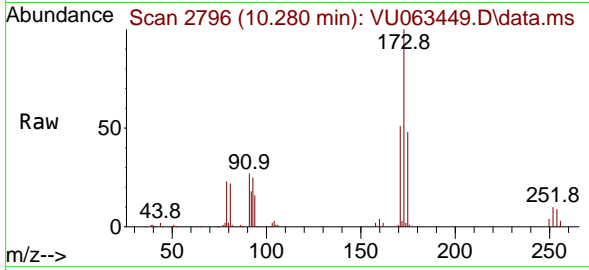


#67
 Bromoform
 Concen: 10.495 ug/l
 RT: 10.280 min Scan# 2796
 Delta R.T. -0.000 min
 Lab File: VU063449.D
 Acq: 25 Jun 2025 08:50

Instrument :
 MSVOA_U
 ClientSampleId :
 VSTDCCC010

Tgt Ion:173 Resp: 76418

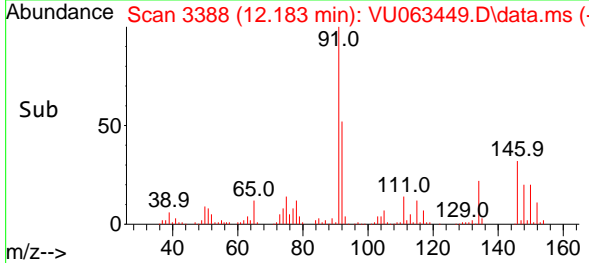
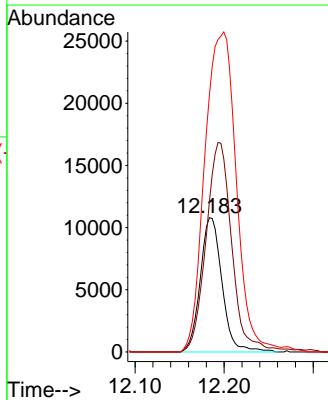
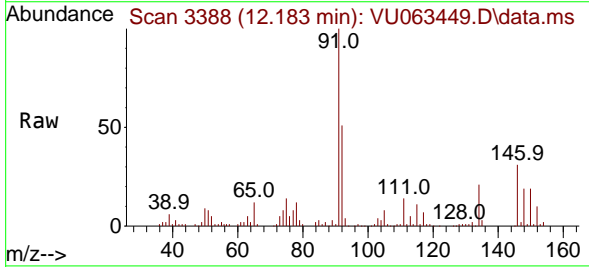
Ion	Ratio	Lower	Upper
173	100		
175	49.0	38.2	57.2
254	9.5	7.6	11.4

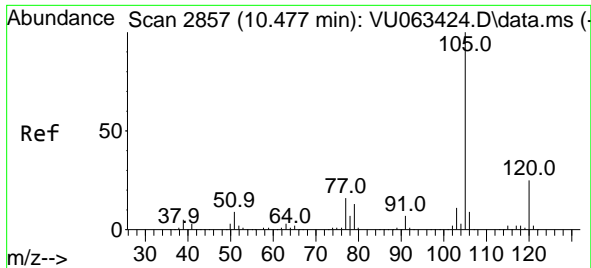


#68
 1,2-Dichlorobenzene-d4
 Concen: 0.946 ug/l
 RT: 12.183 min Scan# 3388
 Delta R.T. -0.000 min
 Lab File: VU063449.D
 Acq: 25 Jun 2025 08:50

Tgt Ion:152 Resp: 18327

Ion	Ratio	Lower	Upper
152	100		
115	184.8	0.0	327.6
150	344.4	0.0	664.4





#69
 Isopropylbenzene
 Concen: 11.926 ug/l
 RT: 10.476 min Scan# 2857
 Delta R.T. -0.000 min
 Lab File: VU063449.D
 Acq: 25 Jun 2025 08:50

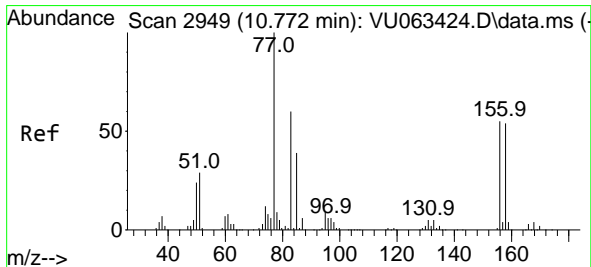
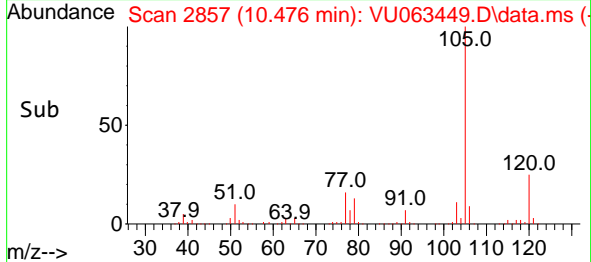
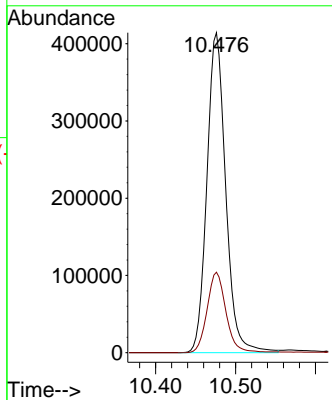
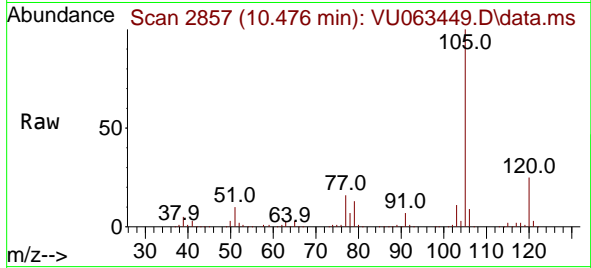
Instrument :

MSVOA_U

ClientSampleId :

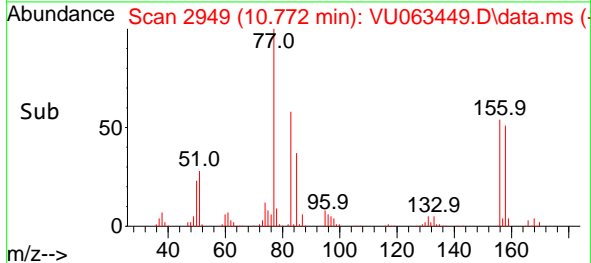
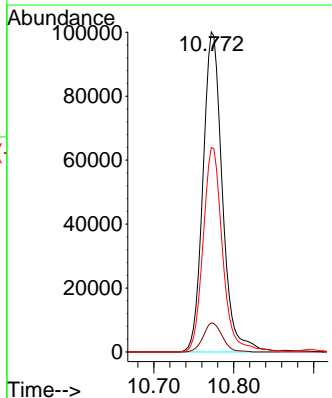
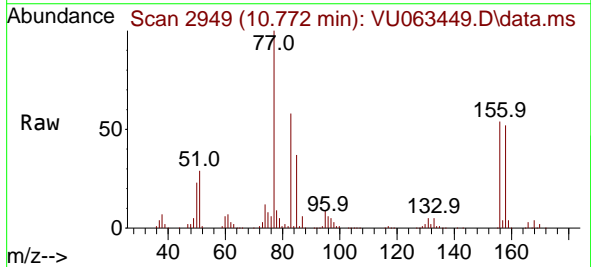
VSTDCCC010

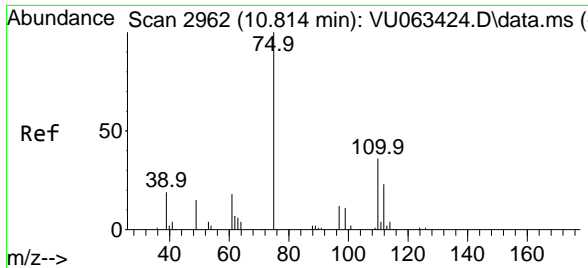
Tgt Ion:105 Resp: 677354
 Ion Ratio Lower Upper
 105 100
 120 25.2 12.7 38.1



#70
 1,1,2,2-Tetrachloroethane
 Concen: 10.234 ug/l
 RT: 10.772 min Scan# 2949
 Delta R.T. -0.000 min
 Lab File: VU063449.D
 Acq: 25 Jun 2025 08:50

Tgt Ion: 83 Resp: 169089
 Ion Ratio Lower Upper
 83 100
 131 8.9 7.4 11.0
 85 64.2 51.3 76.9





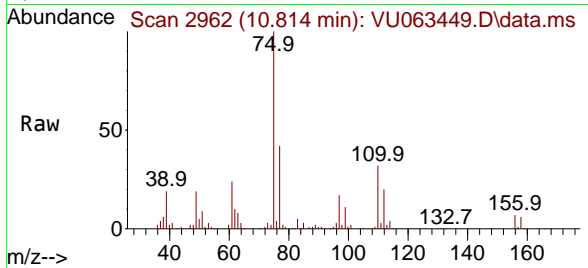
#71
 1,2,3-Trichloropropane
 Concen: 12.983 ug/l
 RT: 10.814 min Scan# 2950
 Delta R.T. -0.000 min
 Lab File: VU063449.D
 Acq: 25 Jun 2025 08:50

Instrument :

MSVOA_U

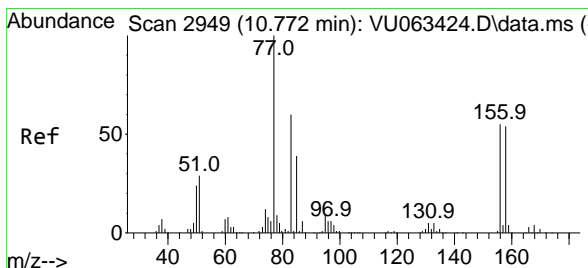
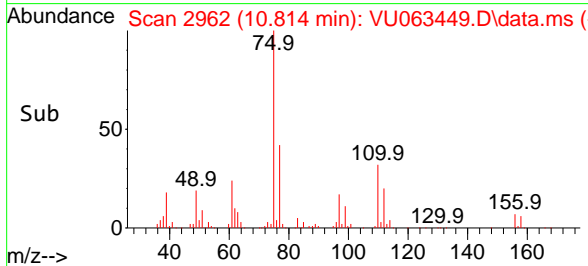
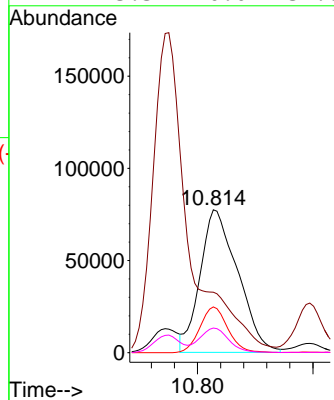
ClientSampleId :

VSTDCCC010



Tgt Ion: 75 Resp: 175190

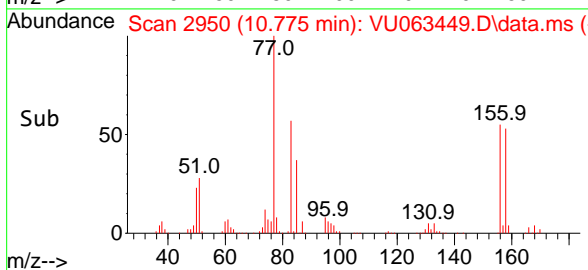
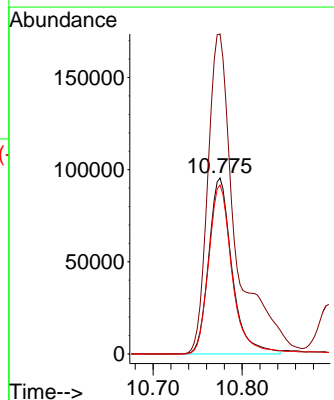
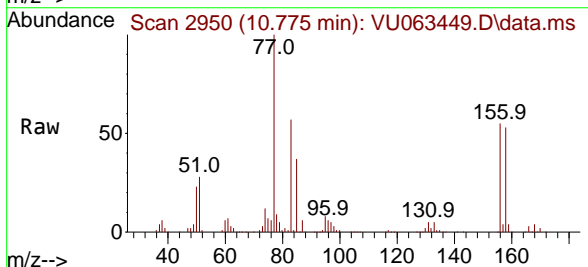
Ion	Ratio	Lower	Upper
75	100		
77	0.0	0.0	0.0
110	23.9	0.0	63.4
97	13.3	0.0	34.0

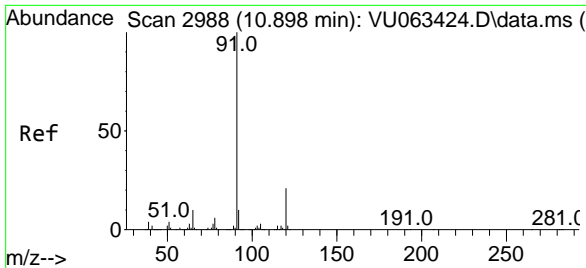


#72
 Bromobenzene
 Concen: 10.857 ug/l
 RT: 10.775 min Scan# 2950
 Delta R.T. 0.003 min
 Lab File: VU063449.D
 Acq: 25 Jun 2025 08:50

Tgt Ion: 156 Resp: 173085

Ion	Ratio	Lower	Upper
156	100		
77	218.4	0.0	416.2
158	96.4	0.0	190.6

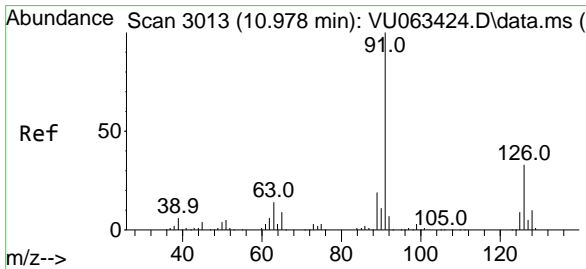
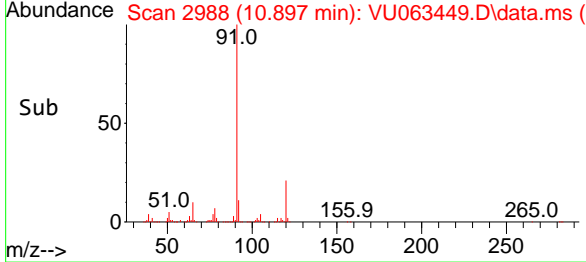
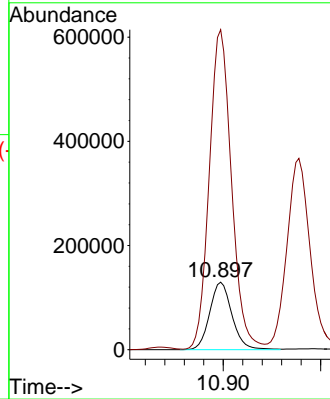
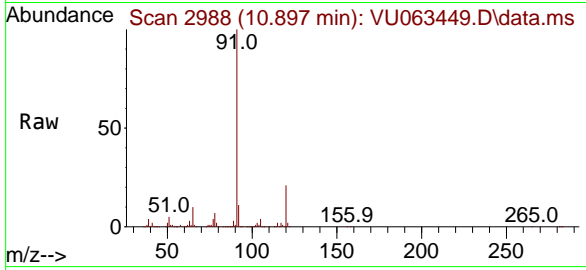




#73
 n-propylbenzene
 Concen: 9.992 ug/l
 RT: 10.897 min Scan# 2988
 Delta R.T. -0.001 min
 Lab File: VU063449.D
 Acq: 25 Jun 2025 08:50

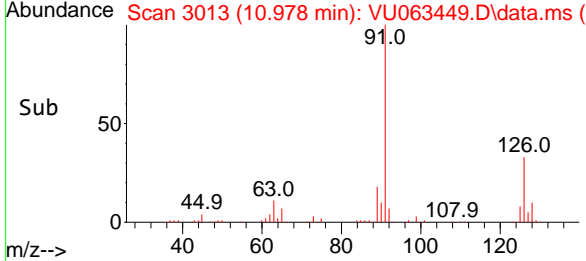
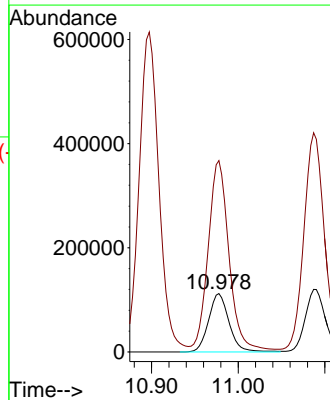
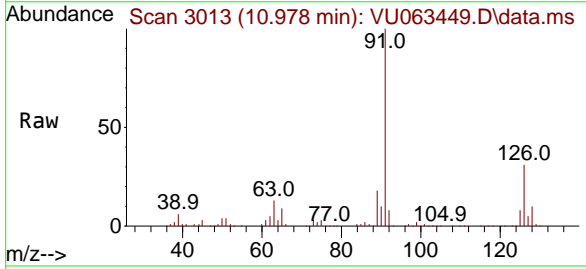
Instrument : MSVOA_U
 ClientSampleId : VSTDCCC010

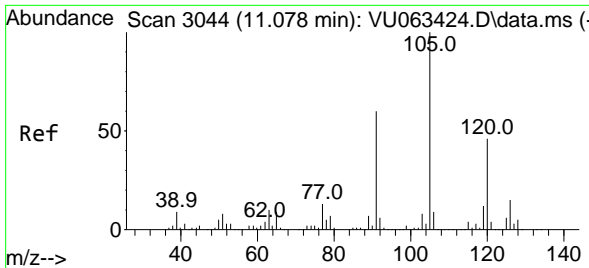
Tgt Ion:120 Resp: 205755
 Ion Ratio Lower Upper
 120 100
 91 471.9 373.7 560.5



#74
 2-Chlorotoluene
 Concen: 11.686 ug/l
 RT: 10.978 min Scan# 3013
 Delta R.T. -0.000 min
 Lab File: VU063449.D
 Acq: 25 Jun 2025 08:50

Tgt Ion:126 Resp: 184161
 Ion Ratio Lower Upper
 126 100
 91 336.1 0.0 650.8

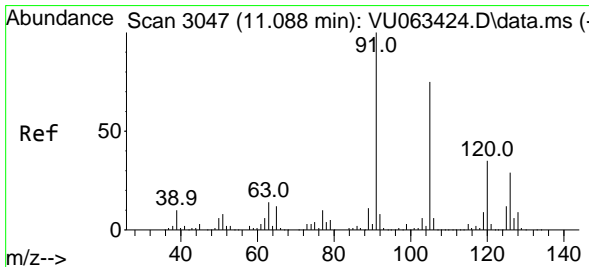
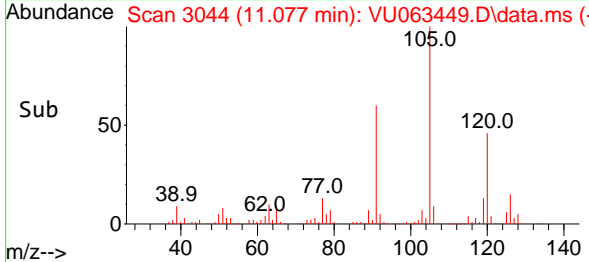
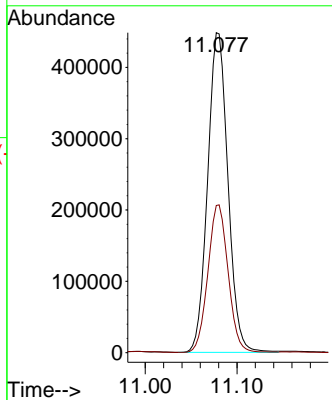
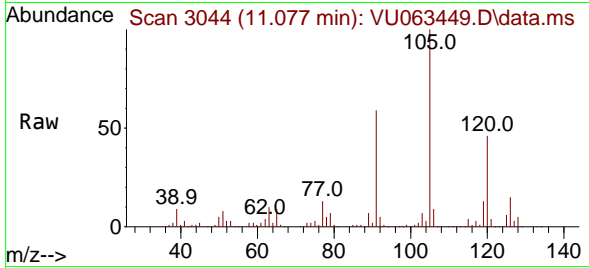




#75
 1,3,5-Trimethylbenzene
 Concen: 10.191 ug/l
 RT: 11.077 min Scan# 3044
 Delta R.T. -0.001 min
 Lab File: VU063449.D
 Acq: 25 Jun 2025 08:50

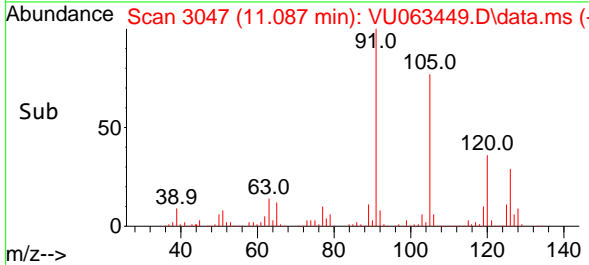
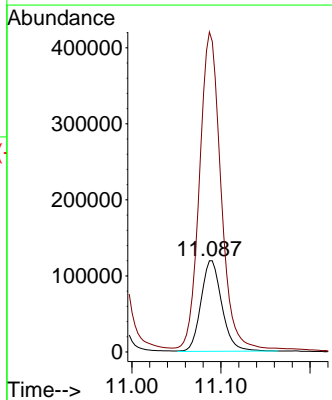
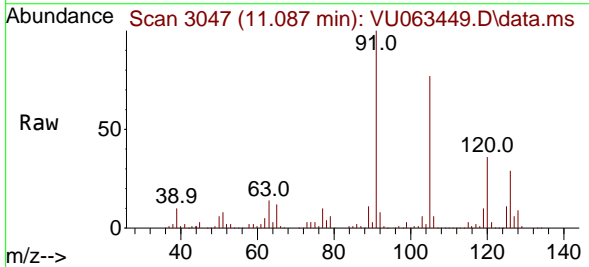
Instrument :
 MSVOA_U
 ClientSampleId :
 VSTDCCC010

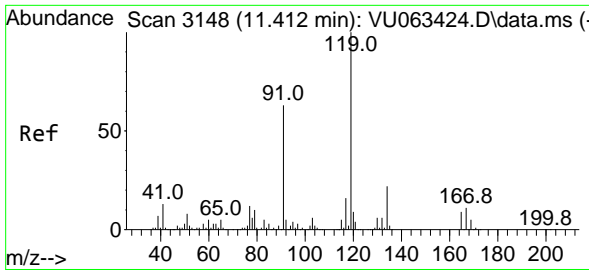
Tgt Ion:105 Resp: 689518
 Ion Ratio Lower Upper
 105 100
 120 46.0 37.0 55.4



#76
 4-Chlorotoluene
 Concen: 11.722 ug/l
 RT: 11.087 min Scan# 3047
 Delta R.T. -0.000 min
 Lab File: VU063449.D
 Acq: 25 Jun 2025 08:50

Tgt Ion:126 Resp: 193497
 Ion Ratio Lower Upper
 126 100
 91 374.9 0.0 713.2



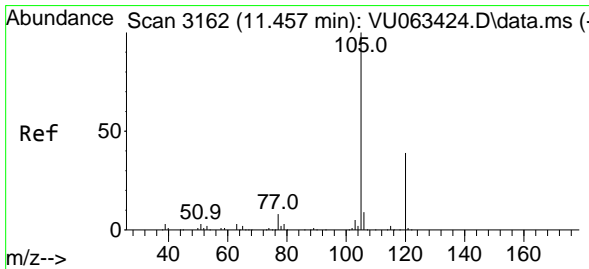
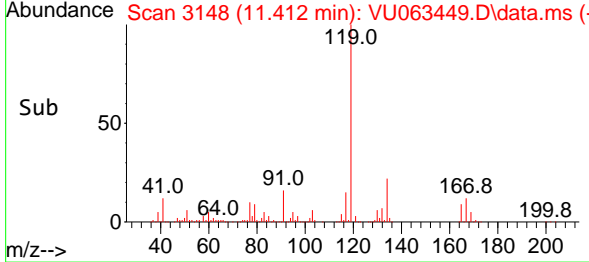
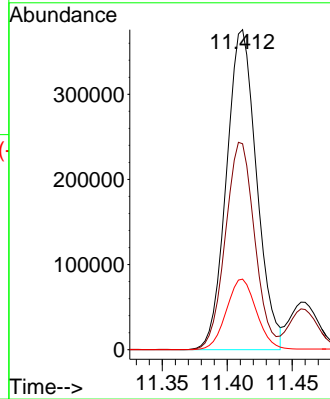
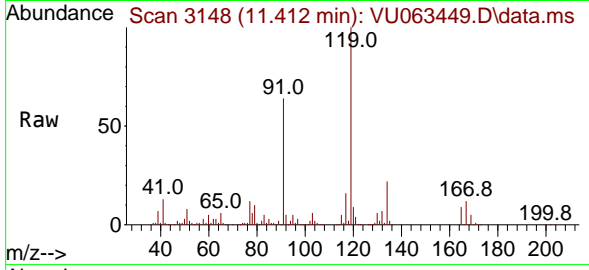


#77
 tert-Butylbenzene
 Concen: 11.665 ug/l
 RT: 11.412 min Scan# 3148
 Delta R.T. -0.000 min
 Lab File: VU063449.D
 Acq: 25 Jun 2025 08:50

Instrument : MSVOA_U
 ClientSampleId : VSTDCCC010

Tgt Ion:119 Resp: 608730

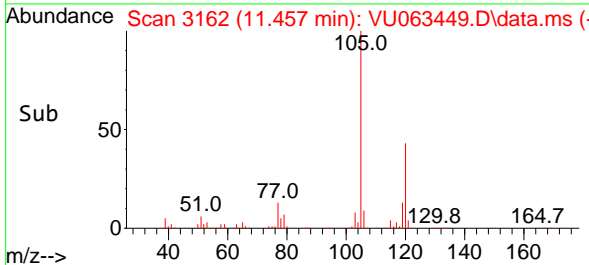
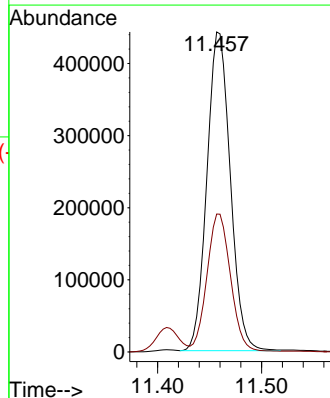
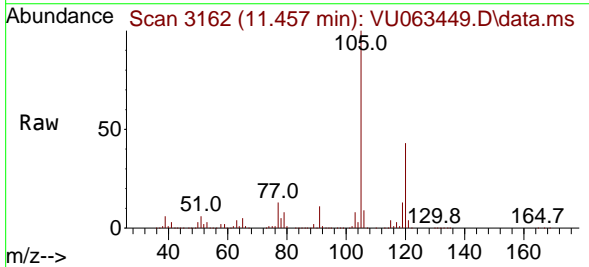
Ion	Ratio	Lower	Upper
119	100		
91	62.5	30.9	92.7
134	22.0	17.9	26.9

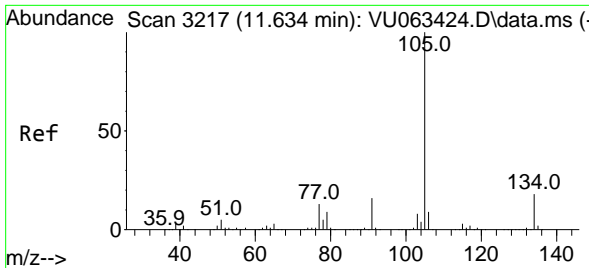


#78
 1,2,4-Trimethylbenzene
 Concen: 10.042 ug/l
 RT: 11.457 min Scan# 3162
 Delta R.T. -0.000 min
 Lab File: VU063449.D
 Acq: 25 Jun 2025 08:50

Tgt Ion:105 Resp: 690056

Ion	Ratio	Lower	Upper
105	100		
120	44.1	22.1	66.5

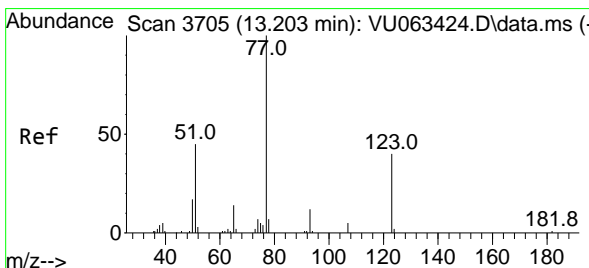
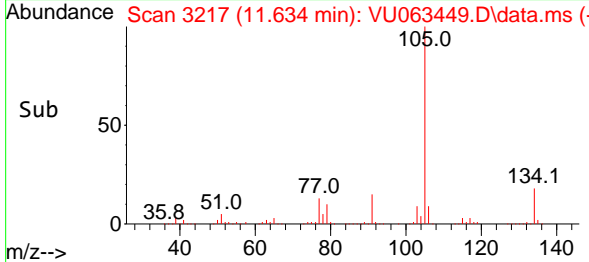
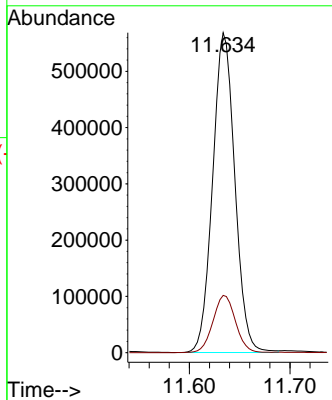
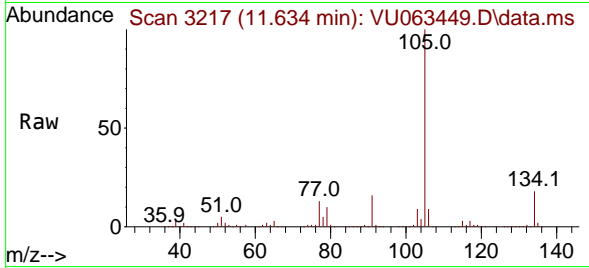




#79
 sec-Butylbenzene
 Concen: 11.793 ug/l
 RT: 11.634 min Scan# 31
 Delta R.T. -0.000 min
 Lab File: VU063449.D
 Acq: 25 Jun 2025 08:50

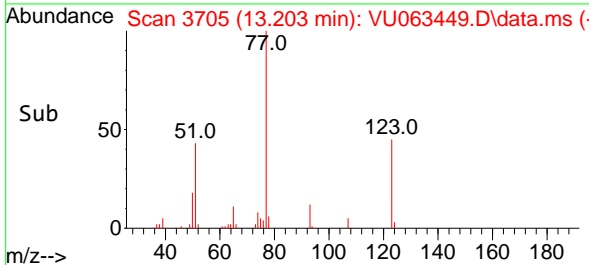
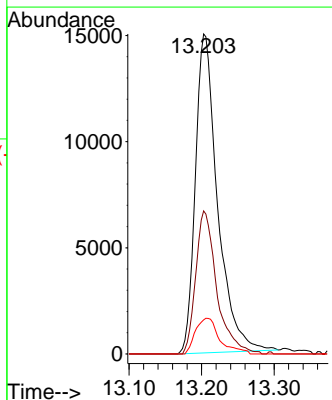
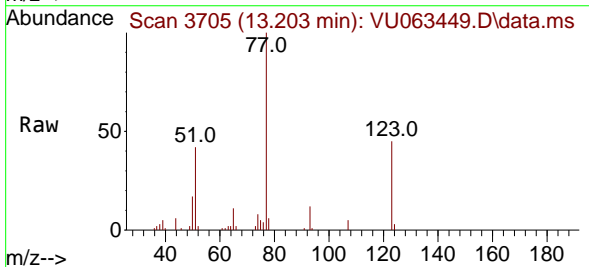
Instrument :
 MSVOA_U
 ClientSampleId :
 VSTDCCC010

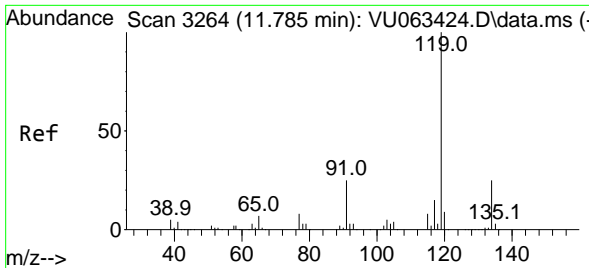
Tgt Ion:105 Resp: 871629
 Ion Ratio Lower Upper
 105 100
 134 18.3 14.8 22.2



#80
 Nitrobenzene
 Concen: 41.349 ug/l
 RT: 13.203 min Scan# 3705
 Delta R.T. -0.000 min
 Lab File: VU063449.D
 Acq: 25 Jun 2025 08:50

Tgt Ion: 77 Resp: 31957
 Ion Ratio Lower Upper
 77 100
 123 42.5 19.6 69.6
 65 12.2 10.6 13.4



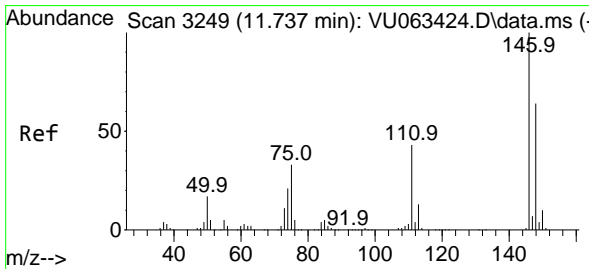
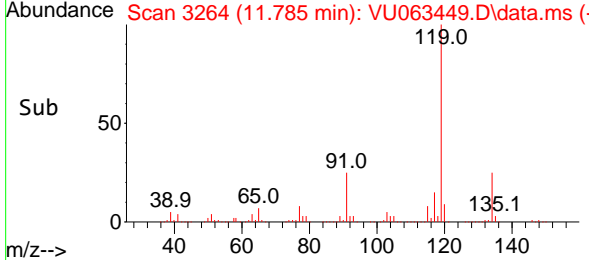
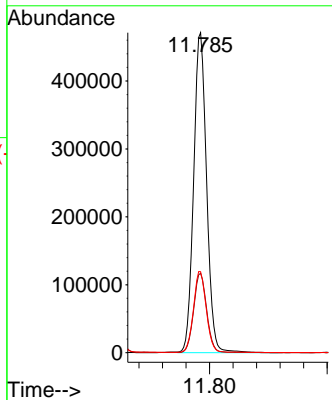
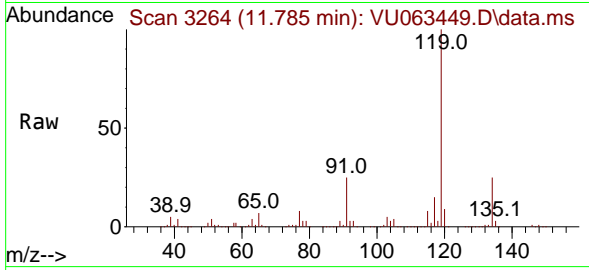


#81
 p-Isopropyltoluene
 Concen: 10.125 ug/l
 RT: 11.785 min Scan# 31
 Delta R.T. -0.000 min
 Lab File: VU063449.D
 Acq: 25 Jun 2025 08:50

Instrument : MSVOA_U
 ClientSampleId : VSTDCCC010

Tgt Ion:119 Resp: 719875

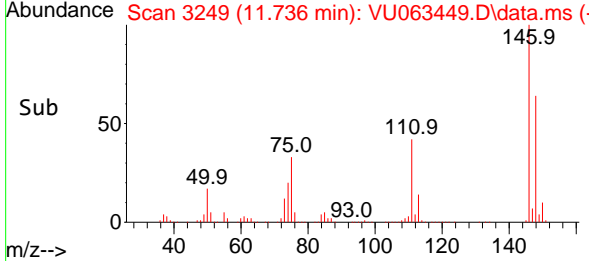
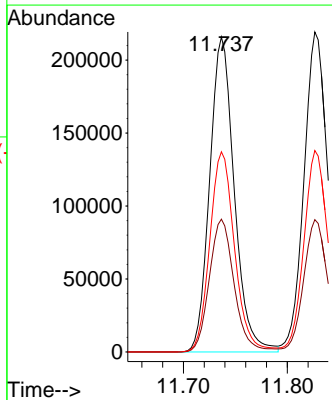
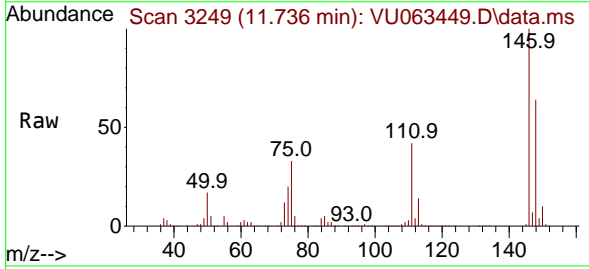
Ion	Ratio	Lower	Upper
119	100		
134	24.7	20.2	30.2
91	24.8	19.7	29.5

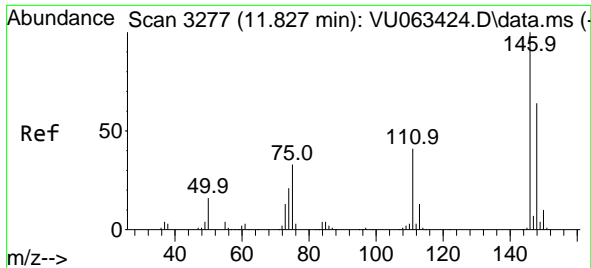


#82
 1,3-Dichlorobenzene
 Concen: 10.748 ug/l
 RT: 11.736 min Scan# 3249
 Delta R.T. -0.000 min
 Lab File: VU063449.D
 Acq: 25 Jun 2025 08:50

Tgt Ion:146 Resp: 354961

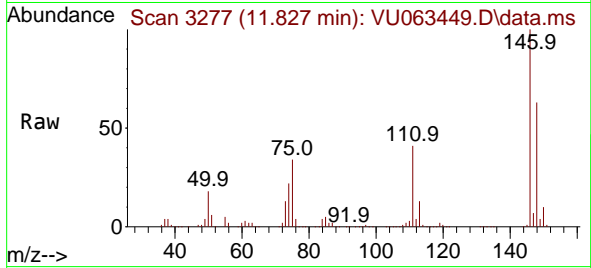
Ion	Ratio	Lower	Upper
146	100		
111	42.6	34.3	51.5
148	64.3	51.0	76.4



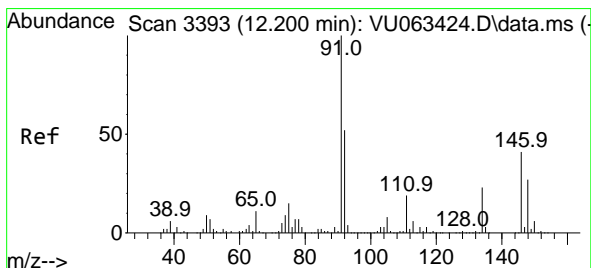
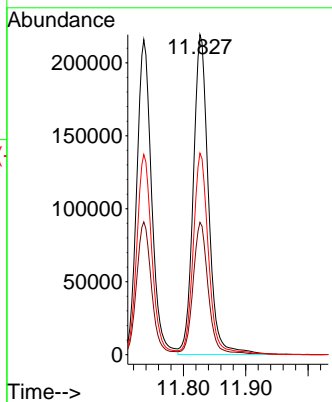
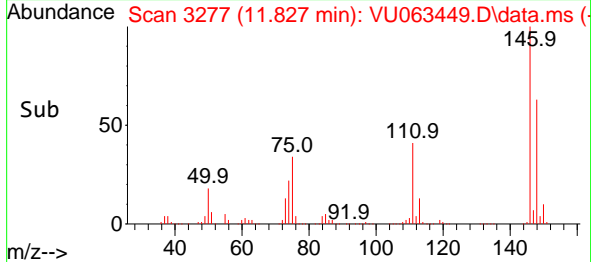


#83
 1,4-Dichlorobenzene
 Concen: 10.787 ug/l
 RT: 11.827 min Scan# 31
 Delta R.T. -0.000 min
 Lab File: VU063449.D
 Acq: 25 Jun 2025 08:50

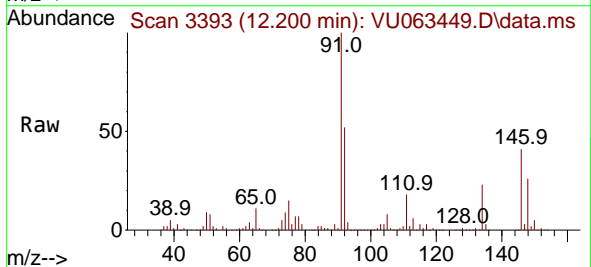
Instrument :
 MSVOA_U
 ClientSampleId :
 VSTDCCC010



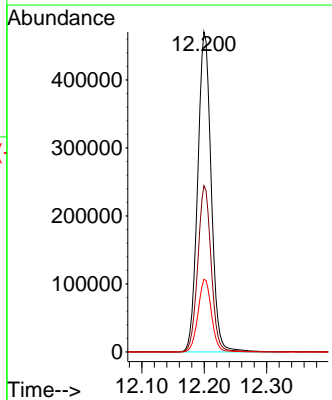
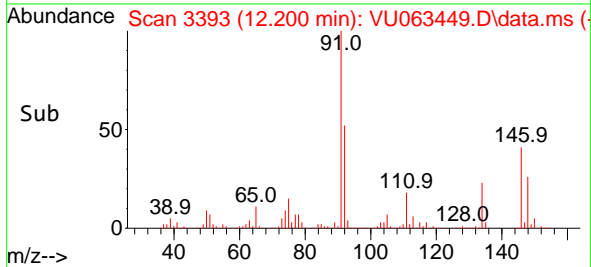
Tgt Ion:146 Resp: 369627
 Ion Ratio Lower Upper
 146 100
 111 40.2 31.7 47.5
 148 63.6 51.4 77.0

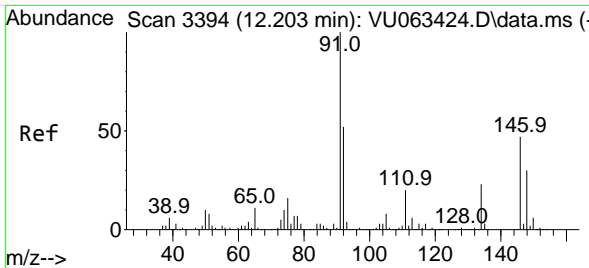


#84
 n-Butylbenzene
 Concen: 11.696 ug/l
 RT: 12.200 min Scan# 3393
 Delta R.T. -0.000 min
 Lab File: VU063449.D
 Acq: 25 Jun 2025 08:50



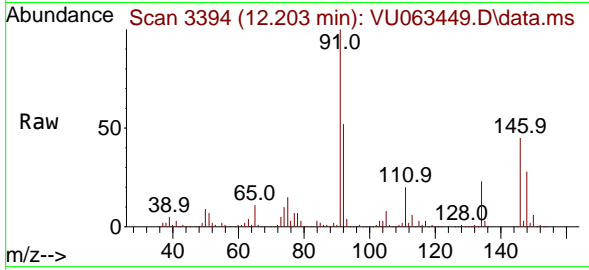
Tgt Ion: 91 Resp: 707587
 Ion Ratio Lower Upper
 91 100
 92 51.5 41.0 61.6
 134 22.6 18.5 27.7



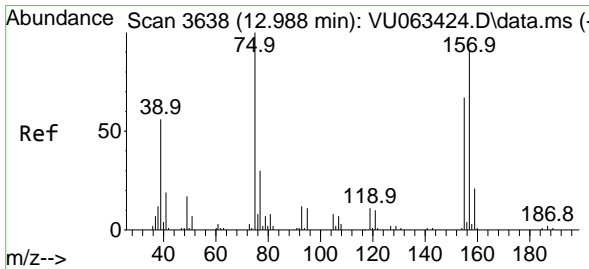
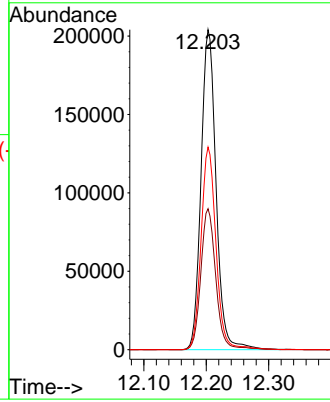
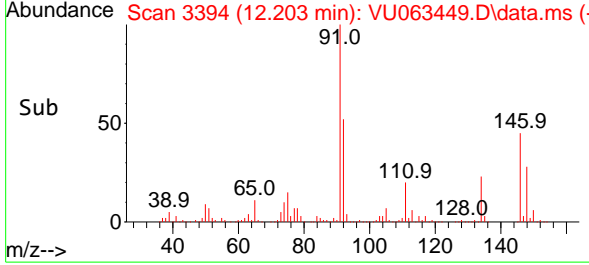


#85
 1,2-Dichlorobenzene
 Concen: 10.820 ug/l
 RT: 12.203 min Scan# 31
 Delta R.T. -0.000 min
 Lab File: VU063449.D
 Acq: 25 Jun 2025 08:50

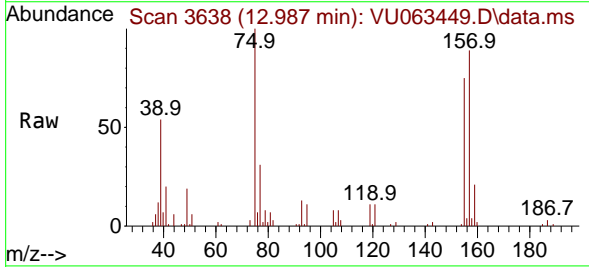
Instrument : MSVOA_U
 ClientSampleId : VSTDCCC010



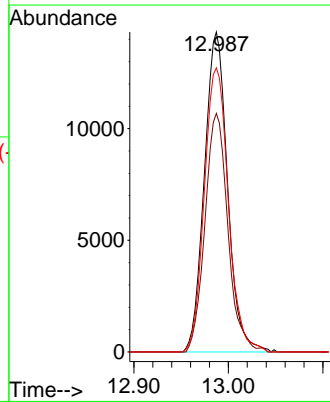
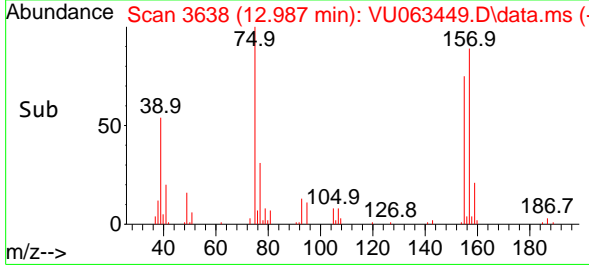
Tgt Ion:146 Resp: 341977
 Ion Ratio Lower Upper
 146 100
 111 43.9 21.8 65.4
 148 63.0 32.3 96.9

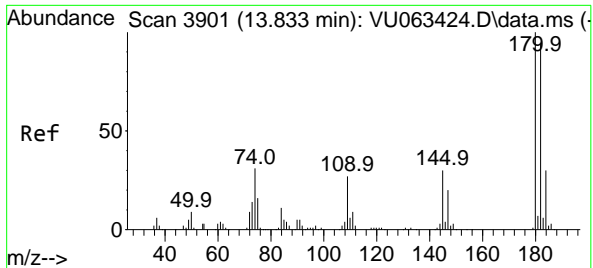


#86
 1,2-Dibromo-3-Chloropropane
 Concen: 10.743 ug/l
 RT: 12.987 min Scan# 3638
 Delta R.T. -0.001 min
 Lab File: VU063449.D
 Acq: 25 Jun 2025 08:50



Tgt Ion: 75 Resp: 24402
 Ion Ratio Lower Upper
 75 100
 155 73.9 59.7 89.5
 157 92.1 75.0 112.4



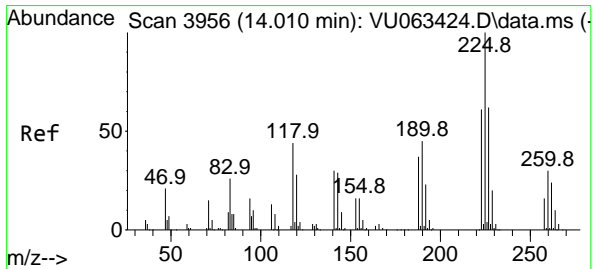
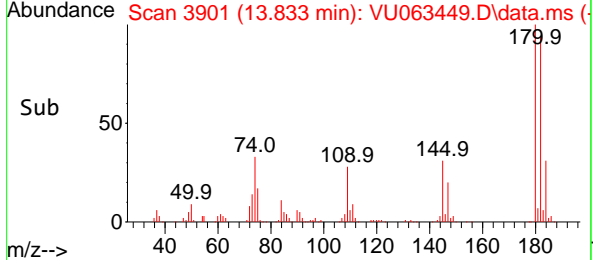
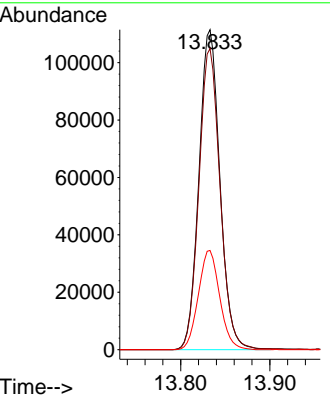
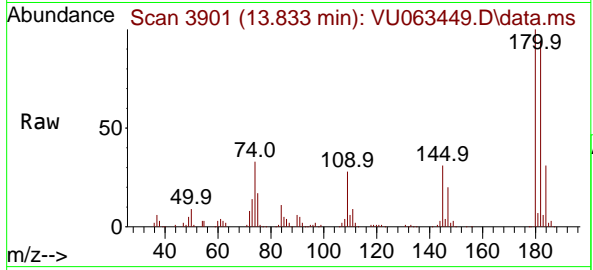


#87
 1,2,4-Trichlorobenzene
 Concen: 10.314 ug/l
 RT: 13.833 min Scan# 3901
 Delta R.T. -0.000 min
 Lab File: VU063449.D
 Acq: 25 Jun 2025 08:50

Instrument : MSVOA_U
 ClientSampleId : VSTDCCC010

Tgt Ion:180 Resp: 181749

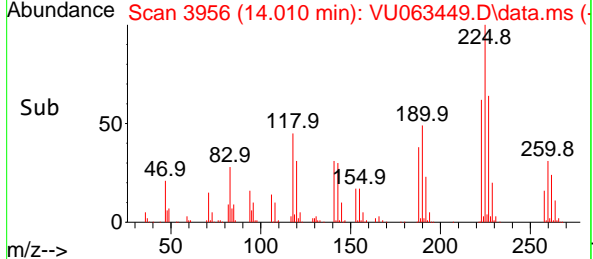
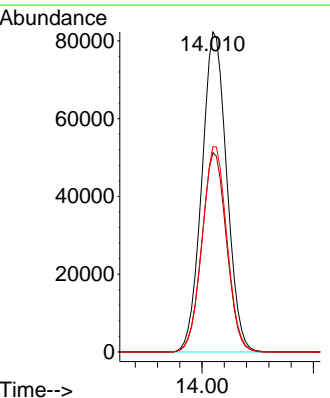
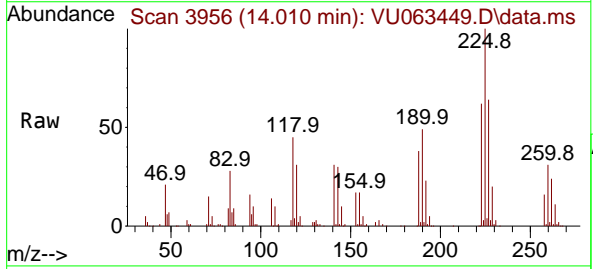
Ion	Ratio	Lower	Upper
180	100		
182	95.2	75.6	113.4
145	31.7	24.6	36.8

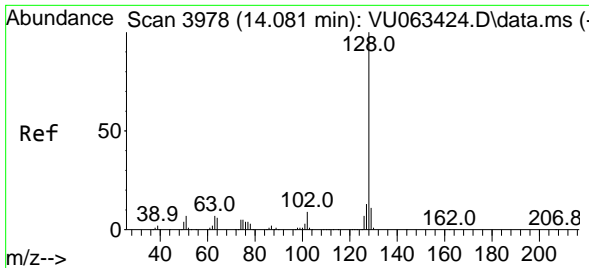


#88
 Hexachlorobutadiene
 Concen: 10.215 ug/l
 RT: 14.010 min Scan# 3956
 Delta R.T. -0.000 min
 Lab File: VU063449.D
 Acq: 25 Jun 2025 08:50

Tgt Ion:225 Resp: 127622

Ion	Ratio	Lower	Upper
225	100		
223	62.0	50.0	75.0
227	63.8	51.5	77.3

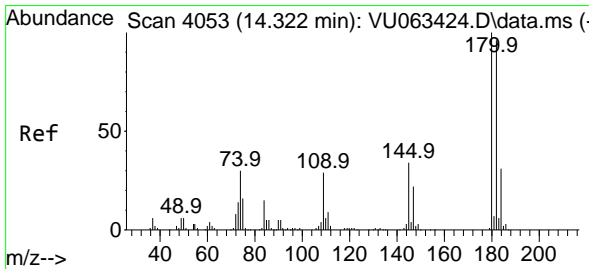
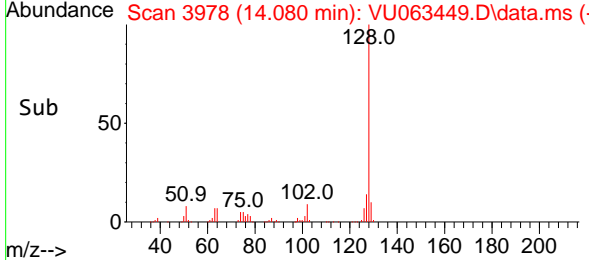
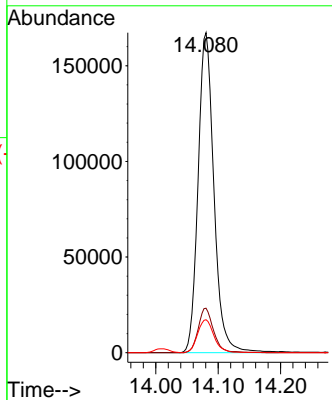
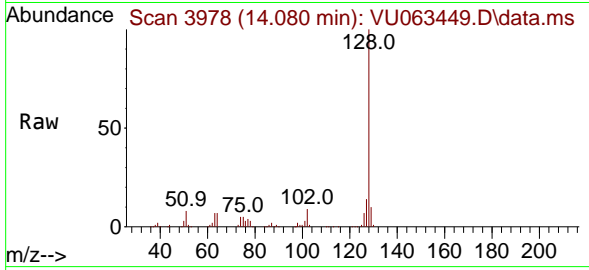




#89
 Naphthalene
 Concen: 8.256 ug/l
 RT: 14.080 min Scan# 3978
 Delta R.T. -0.001 min
 Lab File: VU063449.D
 Acq: 25 Jun 2025 08:50

Instrument : MSVOA_U
 ClientSampleId : VSTDCCC010

Tgt Ion	Resp	Lower	Upper
128	295380		
127	13.5	10.4	15.6
129	10.7	8.7	13.1



#90
 1,2,3-Trichlorobenzene
 Concen: 10.372 ug/l
 RT: 14.322 min Scan# 4053
 Delta R.T. -0.000 min
 Lab File: VU063449.D
 Acq: 25 Jun 2025 08:50

Tgt Ion	Resp	Lower	Upper
180	181747		
182	94.3	76.7	115.1
145	33.3	27.4	41.2

