

Data Path : Z:\VOASRV\HPCHEM1\MSVOA U\DATA\VU062620\
 Data File : VU039153.D
 Acq On : 26 Jun 2020 09:32
 Operator : SY/MD
 Sample : VSTDCCC005
 Misc : 25.0mL/MSVOA U/WATER
 ALS Vial : 1 Sample Multiplier: 1

Instrument :
 MSVOA_U
 ClientSampleId :
 VSTD00519

Quant Time: Jun 26 23:49:32 2020
 Quant Method : Z:\VOASRV\HPCHEM1\MSVOA_U\METHOD\SOMUTR062320WMA.M
 Quant Title : TRACE VOA SOM01.0
 QLast Update : Fri Jun 26 04:20:15 2020
 Response via : Initial Calibration

Internal Standards	R.T.	QIon	Response	Conc	Units	Dev(Min)
1) 1,4-Difluorobenzene	6.28	114	266253	5.00	ug/L	0.00
28) Chlorobenzene-d5	9.44	117	269100	5.00	ug/L	0.00
60) 1,4-Dichlorobenzene-d4	11.83	152	136106	5.00	ug/L	0.00

System Monitoring Compounds

4) Vinyl Chloride-d3	1.61	65	73261	3.76	ug/L	0.00
Spiked Amount	5.000	Range	40 - 130	Recovery	=	75.20%
7) Chloroethane-d5	1.93	69	70448	4.37	ug/L	0.00
Spiked Amount	5.000	Range	65 - 130	Recovery	=	87.40%
11) 1,1-Dichloroethene-d2	2.60	63	171718	4.58	ug/L	0.00
Spiked Amount	5.000	Range	60 - 125	Recovery	=	91.60%
20) 2-Butanone-d5	4.68	46	377094	53.59	ug/L	0.00
Spiked Amount	50.000	Range	40 - 130	Recovery	=	107.18%
24) Chloroform-d	5.10	84	184971	4.82	ug/L	0.00
Spiked Amount	5.000	Range	70 - 125	Recovery	=	96.40%
26) 1,2-Dichloroethane-d4	5.74	65	110087	4.67	ug/L	0.00
Spiked Amount	5.000	Range	70 - 130	Recovery	=	93.40%
32) Benzene-d6	5.76	84	326988	4.38	ug/L	0.00
Spiked Amount	5.000	Range	70 - 125	Recovery	=	87.60%
36) 1,2-Dichloropropane-d6	6.72	67	111953	4.46	ug/L	0.00
Spiked Amount	5.000	Range	60 - 140	Recovery	=	89.20%
41) Toluene-d8	7.92	98	275779	4.42	ug/L	0.00
Spiked Amount	5.000	Range	70 - 130	Recovery	=	88.40%
43) trans-1,3-Dichloropropene-	8.20	79	48600	4.46	ug/L	0.00
Spiked Amount	5.000	Range	55 - 130	Recovery	=	89.20%
46) 2-Hexanone-d5	8.66	63	291300	51.79	ug/L	0.00
Spiked Amount	50.000	Range	45 - 130	Recovery	=	103.58%
57) 1,1,2,2-Tetrachloroethane-	10.77	84	109846	4.71	ug/L	0.00
Spiked Amount	5.000	Range	65 - 120	Recovery	=	94.20%
64) 1,2-Dichlorobenzene-d4	12.20	152	108724	4.29	ug/L	0.00
Spiked Amount	5.000	Range	80 - 120	Recovery	=	85.80%

Target Compounds

Target Compounds	R.T.	QIon	Response	Conc	Units	Ovalue
2) Dichlorodifluoromethane	1.39	85	124195	5.212	ug/L	99
3) Chloromethane	1.53	50	129244	5.040	ug/L	97
5) Vinyl chloride	1.62	62	134459	5.199	ug/L	99
6) Bromomethane	1.88	94	73157	5.254	ug/L	99
8) Chloroethane	1.95	64	83375	5.349	ug/L	98
9) Trichlorofluoromethane	2.16	101	183721	5.549	ug/L	99
10) 1,1,2-Trichloro-1,2,2-trif	2.61	101	106904	5.546	ug/L	99
12) 1,1-Dichloroethene	2.61	96	98616	5.348	ug/L	91
13) Acetone	2.68	43	250991	52.527	ug/L	100
14) Carbon disulfide	2.82	76	309878	5.040	ug/L	100
15) Methyl Acetate	2.99	43	57086	5.032	ug/L	95
16) Methylene chloride	3.08	84	116860	5.137	ug/L	98
17) Methyl tert-butyl Ether	3.40	73	271236	5.167	ug/L	100
18) trans-1,2-Dichloroethene	3.39	96	101983	5.169	ug/L	99
19) 1,1-Dichloroethane	3.91	63	208739	5.322	ug/L	98
21) 2-Butanone	4.75	43	403076	55.483	ug/L	98
22) cis-1,2-Dichloroethene	4.71	96	111375	5.231	ug/L	97

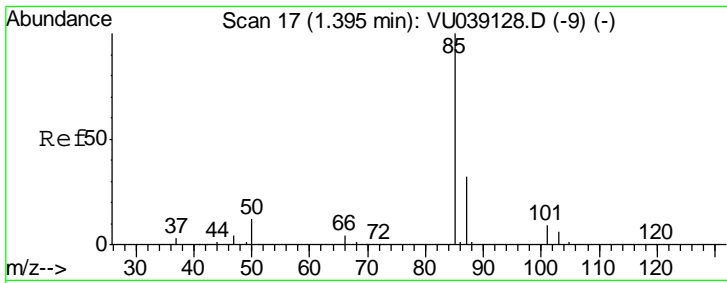
Data Path : Z:\VOASRV\HPCHEM1\MSVOA U\DATA\VU062620\
 Data File : VU039153.D
 Acq On : 26 Jun 2020 09:32
 Operator : SY/MD
 Sample : VSTDCCC005
 Misc : 25.0mL/MSVOA U/WATER
 ALS Vial : 1 Sample Multiplier: 1

Instrument :
 MSVOA_U
 ClientSampleId :
 VSTD00519

Quant Time: Jun 26 23:49:32 2020
 Quant Method : Z:\VOASRV\HPCHEM1\MSVOA_U\METHOD\SOMUTR062320WMA.M
 Quant Title : TRACE VOA SOM01.0
 QLast Update : Fri Jun 26 04:20:15 2020
 Response via : Initial Calibration

Internal Standards	R.T.	QIon	Response	Conc	Units	Dev(Min)
23) Bromochloromethane	5.01	128	52994	5.408	ug/L	97
25) Chloroform	5.12	83	209760	5.323	ug/L	96
27) 1,2-Dichloroethane	5.83	62	149703	5.331	ug/L	98
29) 1,1,1-Trichloroethane	5.35	97	180993	5.389	ug/L	99
30) Cyclohexane	5.42	56	164698	5.271	ug/L	99
31) Carbon tetrachloride	5.56	117	149470	5.345	ug/L	100
33) Benzene	5.81	78	445292	5.267	ug/L	100
34) Trichloroethene	6.57	95	111799	5.467	ug/L	98
35) Methylcyclohexane	6.79	83	165153	5.442	ug/L	98
37) 1,2-Dichloropropane	6.82	63	119692	5.225	ug/L #	93
38) Bromodichloromethane	7.13	83	151591	5.308	ug/L	100
39) cis-1,3-Dichloropropene	7.63	75	165843	5.223	ug/L	97
40) 4-Methyl-2-pentanone	7.82	43	913690	53.442	ug/L	99
42) Toluene	7.99	91	457363	5.450	ug/L	99
44) trans-1,3-Dichloropropene	8.23	75	159942	5.384	ug/L	100
45) 1,1,2-Trichloroethane	8.42	97	90764	5.331	ug/L	95
47) Tetrachloroethene	8.57	164	79203	5.373	ug/L	96
48) 2-Hexanone	8.71	43	701167	55.943	ug/L	99
49) Dibromochloromethane	8.83	129	99168	5.357	ug/L	99
50) 1,2-Dibromoethane	8.94	107	83895	5.212	ug/L #	98
51) Chlorobenzene	9.47	112	282793	5.353	ug/L	100
52) Ethylbenzene	9.59	91	471808	5.348	ug/L	99
53) m,p-Xylene	9.71	106	181232	5.587	ug/L	100
54) o-Xylene	10.12	106	172604	5.539	ug/L	98
55) Styrene	10.13	104	310233	5.669	ug/L	99
56) Isopropylbenzene	10.50	105	459576	5.629	ug/L	100
58) 1,1,2,2-Tetrachloroethane	10.80	83	113938	5.005	ug/L	98
59) 1,2,3-Trichloropropane	10.84	75	89919	5.207	ug/L	98
61) Bromoform	10.31	173	54547	4.906	ug/L	99
62) 1,3-Dichlorobenzene	11.76	146	217683	5.379	ug/L	99
63) 1,4-Dichlorobenzene	11.85	146	220007	5.278	ug/L	97
65) 1,2-Dichlorobenzene	12.23	146	208619	5.141	ug/L	99
66) 1,2-Dibromo-3-chloropropan	13.02	75	21079	4.709	ug/L	95
67) 1,3,5-Trichlorobenzene	13.24	180	153875	5.137	ug/L	99
68) 1,2,4-trichlorobenzene	13.87	180	136188	4.992	ug/L	97
69) Naphthalene	14.12	128	257201	4.419	ug/L	100
70) 1,2,3-Trichlorobenzene	14.37	180	130373	4.951	ug/L	98

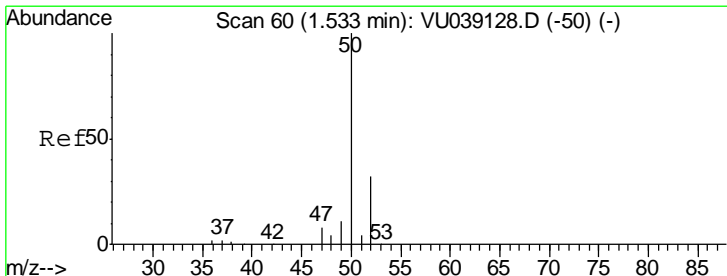
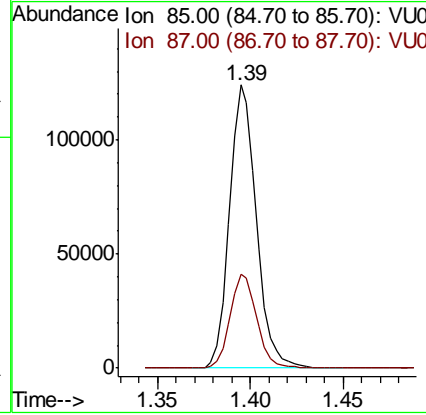
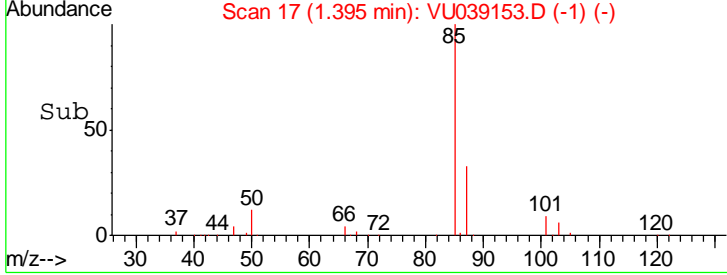
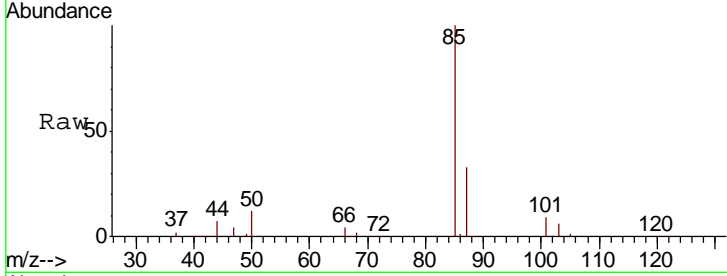
(#) = qualifier out of range (m) = manual integration (+) = signals summed



#2
 Dichlorodifluoromethane
 Concen: 5.212 ug/L
 RT: 1.39 min Scan# 17
 Delta R.T. 0.00 min
 Lab File: VU039153.D
 Acq: 26 Jun 2020 09:32

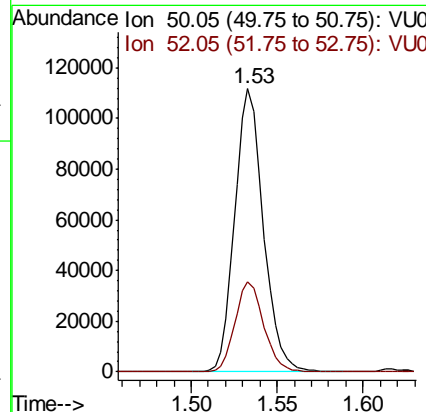
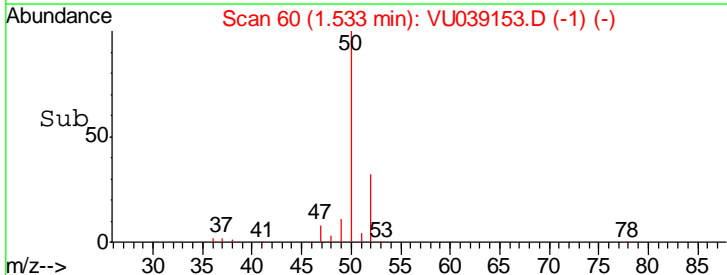
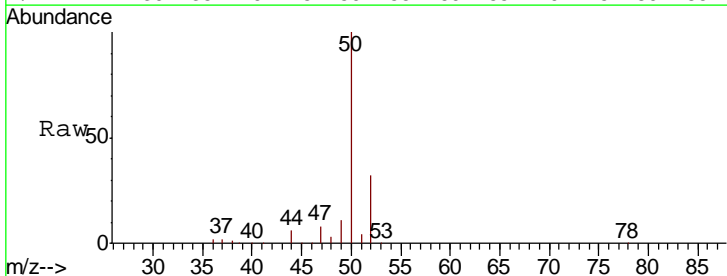
Instrument :
 MSVOA_U
ClientSampled :
 VSTD00519

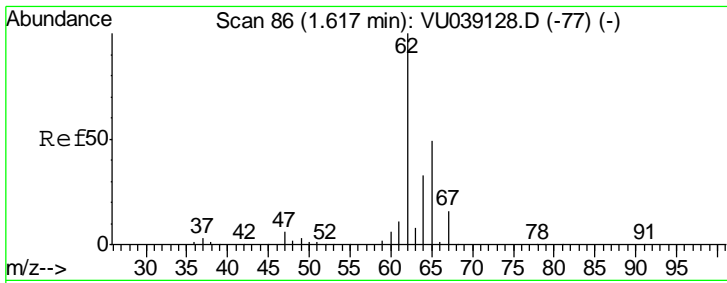
Tgt Ion: 85 Resp: 124195
 Ion Ratio Lower Upper
 85 100
 87 32.9 25.8 38.6



#3
 Chloromethane
 Concen: 5.040 ug/L
 RT: 1.53 min Scan# 60
 Delta R.T. 0.00 min
 Lab File: VU039153.D
 Acq: 26 Jun 2020 09:32

Tgt Ion: 50 Resp: 129244
 Ion Ratio Lower Upper
 50 100
 52 32.0 21.1 39.3

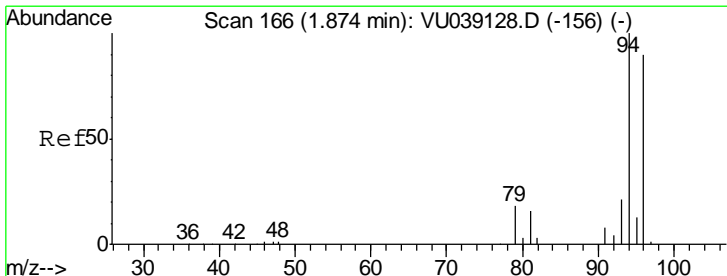
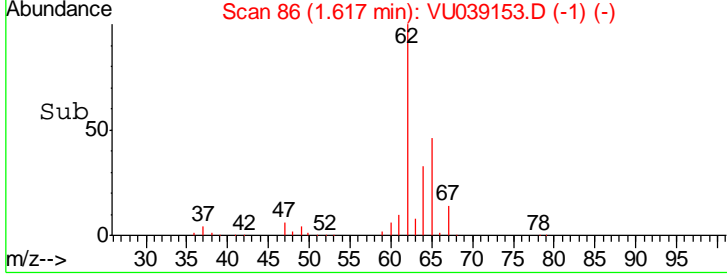
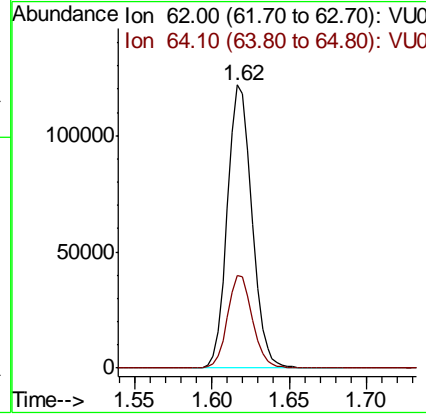
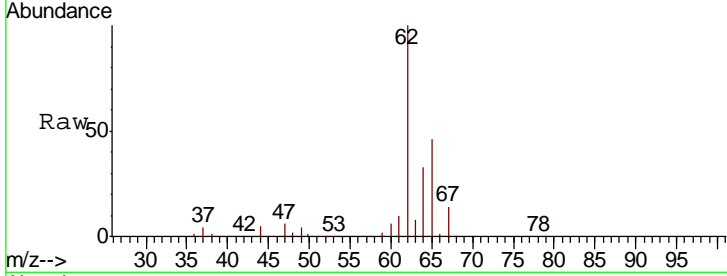




#5
 Vinyl chloride
 Concen: 5.199 ug/L
 RT: 1.62 min Scan# 86
 Delta R.T. 0.00 min
 Lab File: VU039153.D
 Acq: 26 Jun 2020 09:32

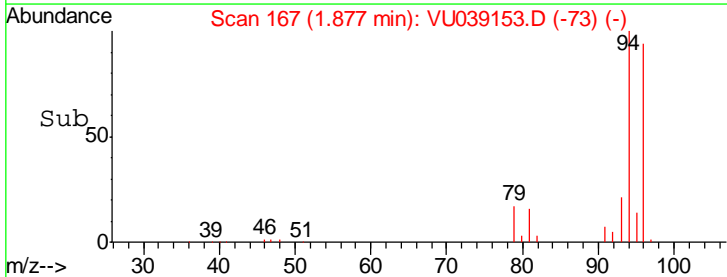
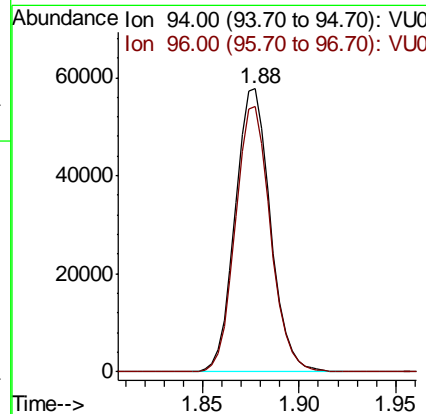
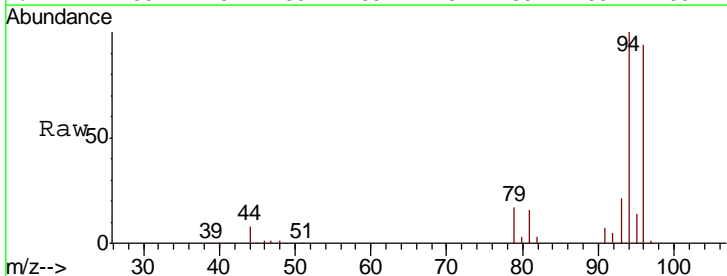
Instrument : MSVOA_U
 ClientSampled : VSTD00519

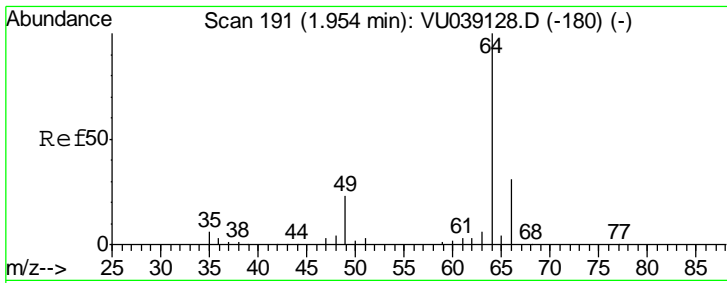
Tgt Ion	Resp	Lower	Upper
62	134459		
64	32.7	22.4	41.6



#6
 Bromomethane
 Concen: 5.254 ug/L
 RT: 1.88 min Scan# 167
 Delta R.T. 0.00 min
 Lab File: VU039153.D
 Acq: 26 Jun 2020 09:32

Tgt Ion	Resp	Lower	Upper
94	73157		
96	93.7	64.9	120.5



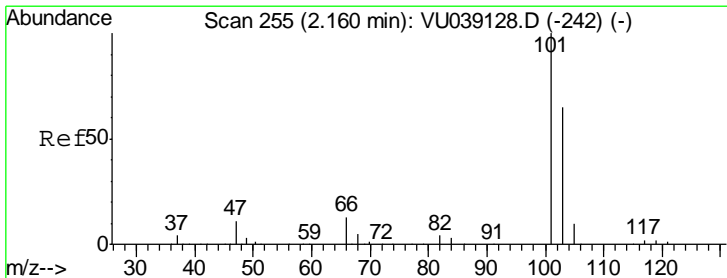
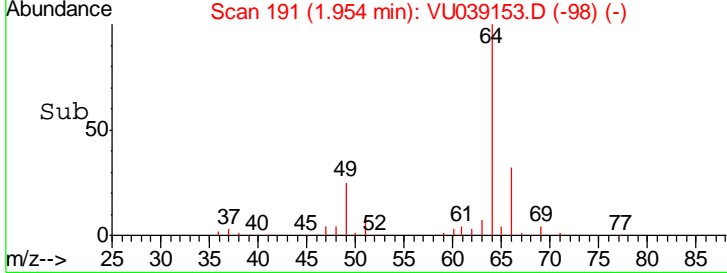
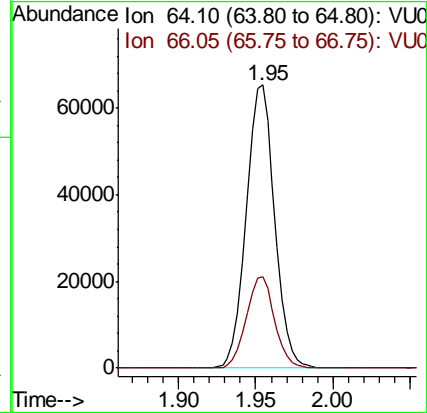
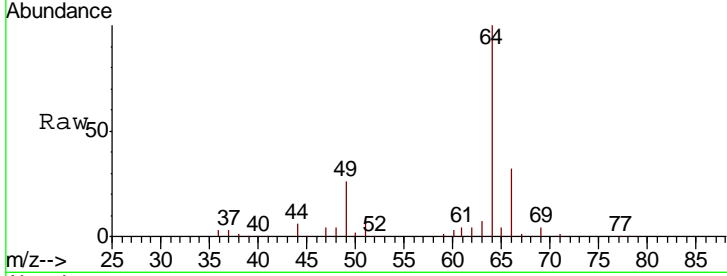


#8
 Chloroethane
 Concen: 5.349 ug/L
 RT: 1.95 min Scan# 191
 Delta R.T. 0.00 min
 Lab File: VU039153.D
 Acq: 26 Jun 2020 09:32

Instrument : MSVOA_U
 ClientSampled : VSTD00519

Tgt Ion: 64 Resp: 83375

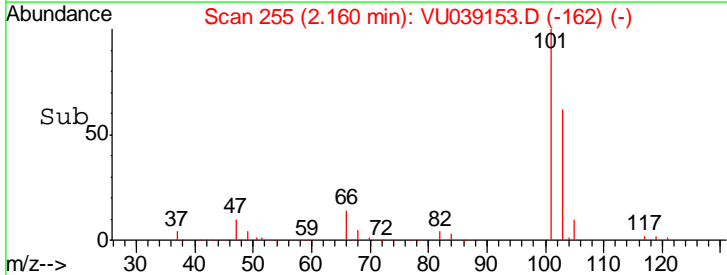
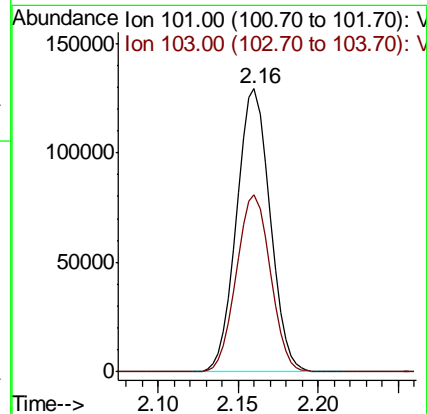
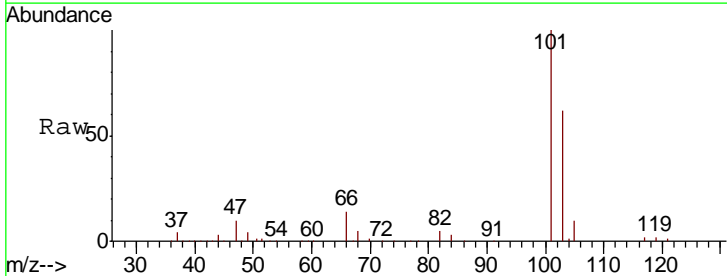
Ion	Ratio	Lower	Upper
64	100		
66	32.3	23.4	43.4

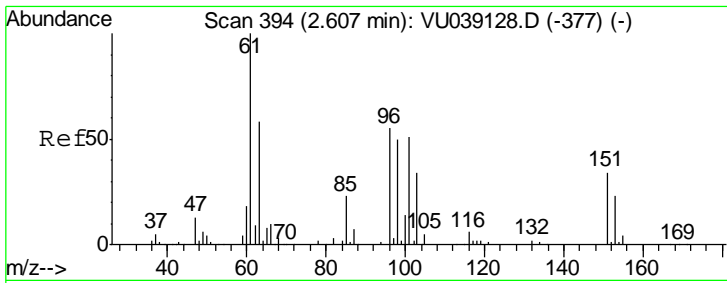


#9
 Trichlorofluoromethane
 Concen: 5.549 ug/L
 RT: 2.16 min Scan# 255
 Delta R.T. 0.00 min
 Lab File: VU039153.D
 Acq: 26 Jun 2020 09:32

Tgt Ion: 101 Resp: 183721

Ion	Ratio	Lower	Upper
101	100		
103	63.7	51.4	77.0





#10

1,1,2-Trichloro-1,2,2-trifluoroethane

Concen: 5.546 ug/L

RT: 2.61 min Scan# 394

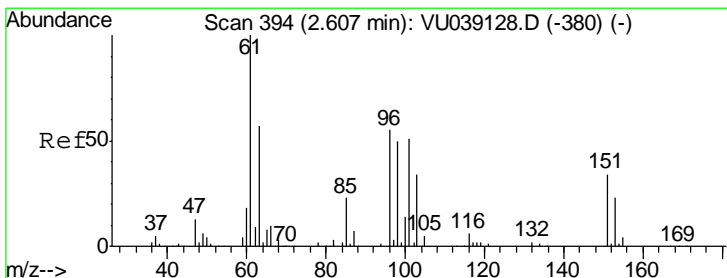
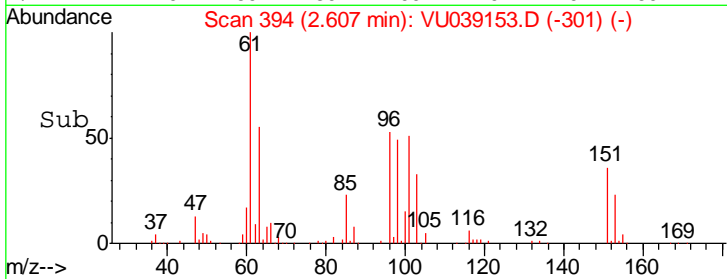
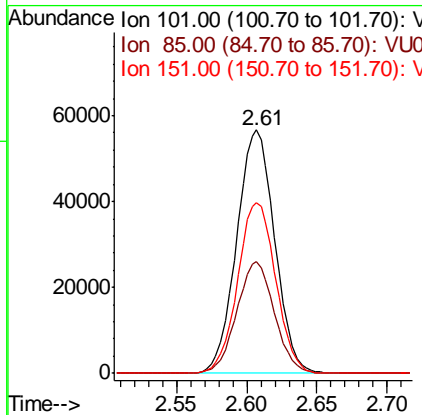
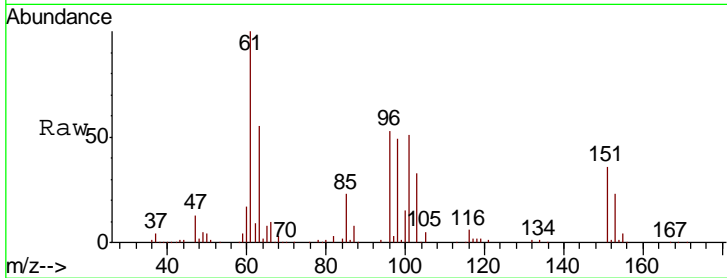
Delta R.T. 0.00 min

Lab File: VU039153.D

Acq: 26 Jun 2020 09:32

Instrument : MSVOA_U
ClientSampled : VSTD00519

Tgt Ion	Resp	Lower	Upper
101	106904		
101	100		
85	45.4	36.2	54.4
151	70.1	55.0	82.6



#12

1,1-Dichloroethene

Concen: 5.348 ug/L

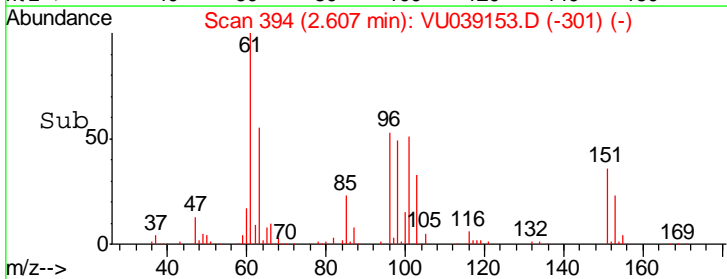
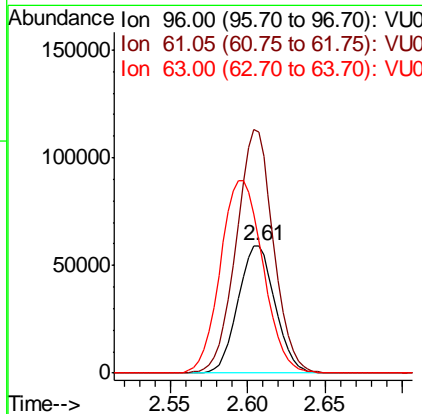
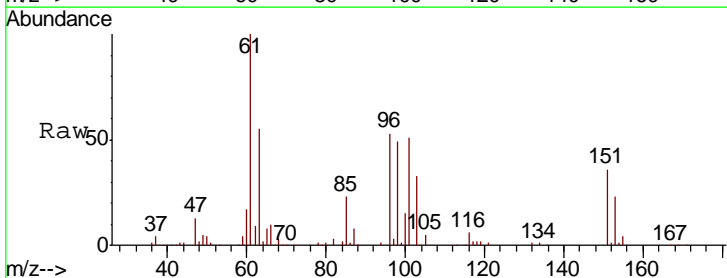
RT: 2.61 min Scan# 394

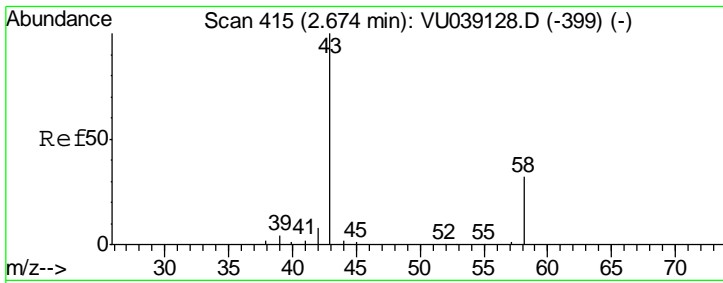
Delta R.T. 0.00 min

Lab File: VU039153.D

Acq: 26 Jun 2020 09:32

Tgt Ion	Resp	Lower	Upper
96	98616		
96	100		
61	188.3	125.1	232.3
63	103.1	82.3	152.8

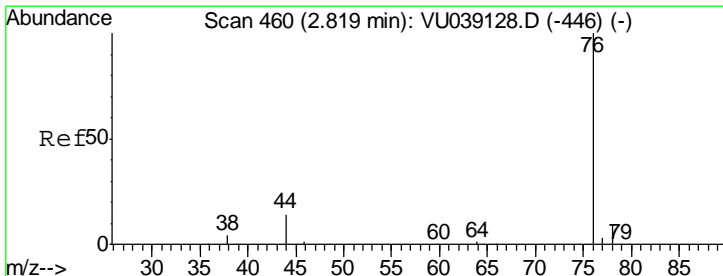
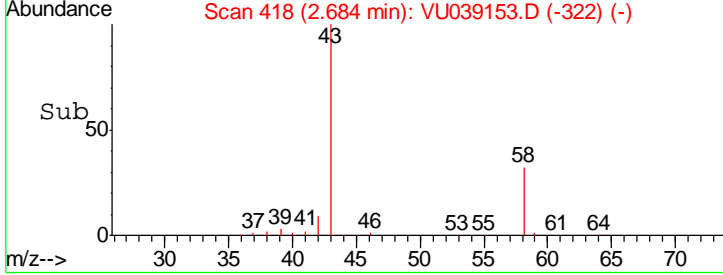
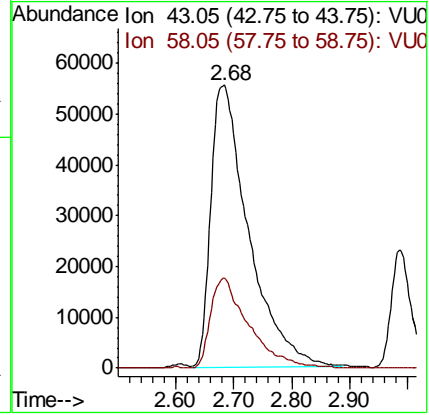
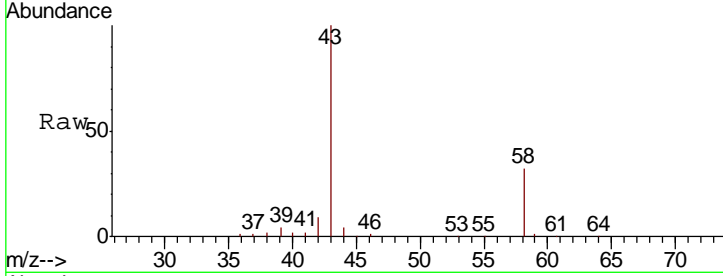




#13
 Acetone
 Concen: 52.527 ug/L
 RT: 2.68 min Scan# 418
 Delta R.T. 0.01 min
 Lab File: VU039153.D
 Acq: 26 Jun 2020 09:32

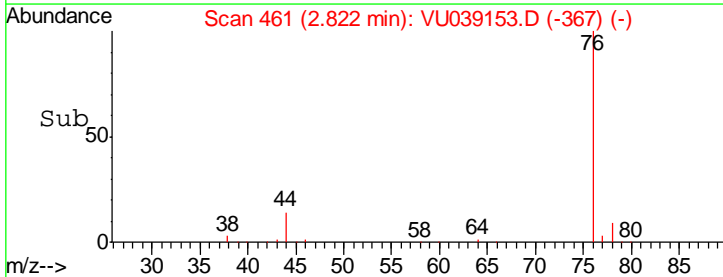
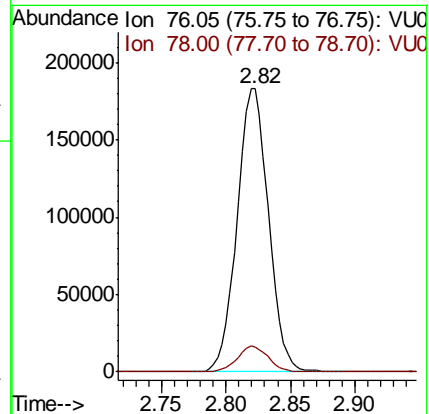
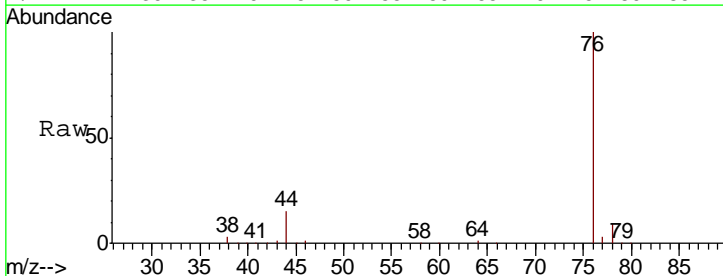
Instrument :
 MSVOA_U
ClientSampled :
 VSTD00519

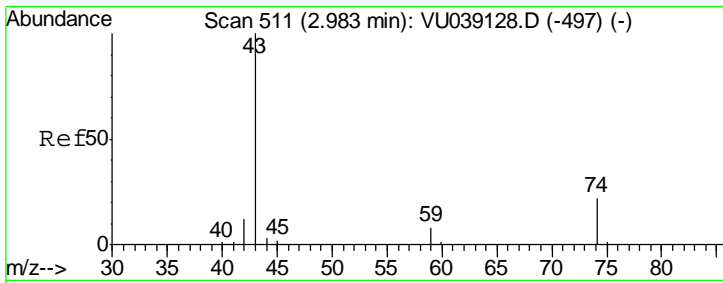
Tgt Ion	Resp	Lower	Upper
43	100		
58	32.3	0.0	64.4



#14
 Carbon disulfide
 Concen: 5.040 ug/L
 RT: 2.82 min Scan# 461
 Delta R.T. 0.00 min
 Lab File: VU039153.D
 Acq: 26 Jun 2020 09:32

Tgt Ion	Resp	Lower	Upper
76	100		
78	8.8	7.0	10.6

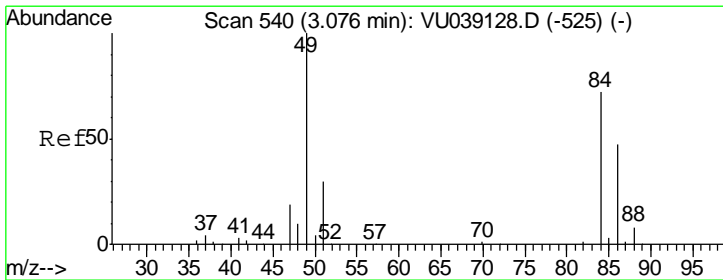
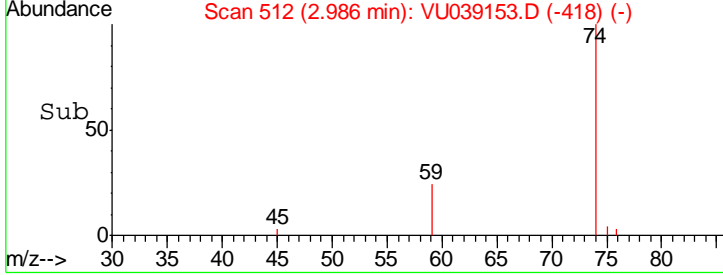
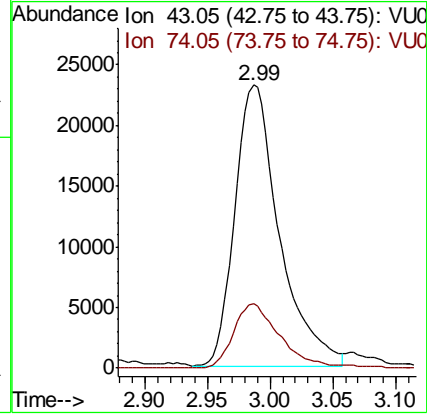
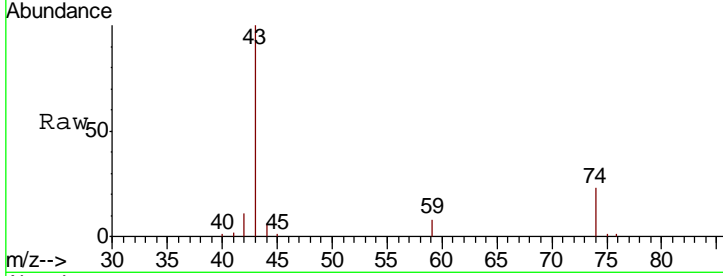




#15
 Methyl Acetate
 Concen: 5.032 ug/L
 RT: 2.99 min Scan# 512
 Delta R.T. 0.00 min
 Lab File: VU039153.D
 Acq: 26 Jun 2020 09:32

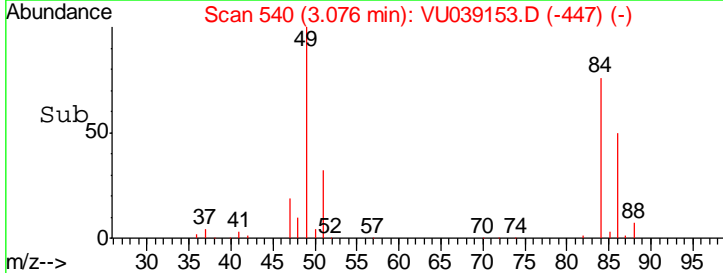
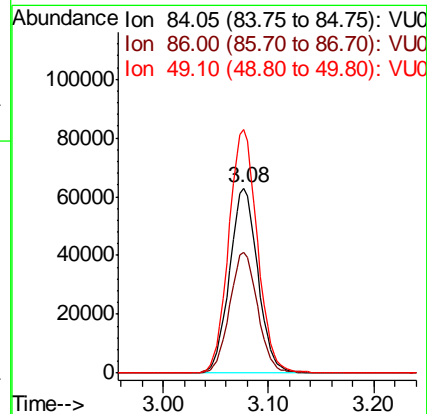
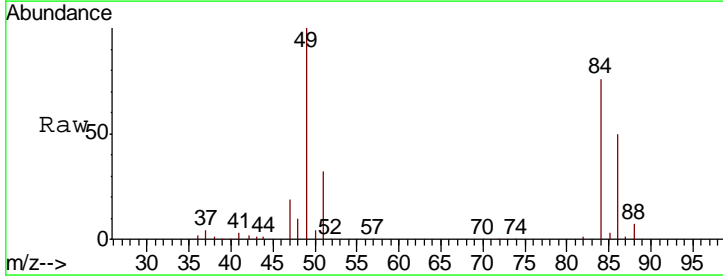
Instrument : MSVOA_U
 ClientSampled : VSTD00519

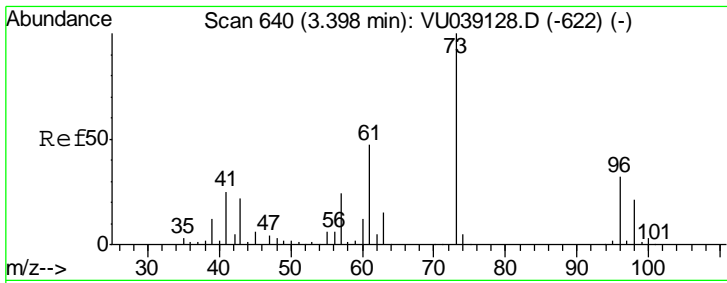
Tgt Ion	Resp	Lower	Upper
43	57086		
74	23.7	17.0	25.4



#16
 Methylene chloride
 Concen: 5.137 ug/L
 RT: 3.08 min Scan# 540
 Delta R.T. 0.00 min
 Lab File: VU039153.D
 Acq: 26 Jun 2020 09:32

Tgt Ion	Resp	Lower	Upper
84	116860		
86	65.5	44.1	81.9
49	131.4	93.1	172.9



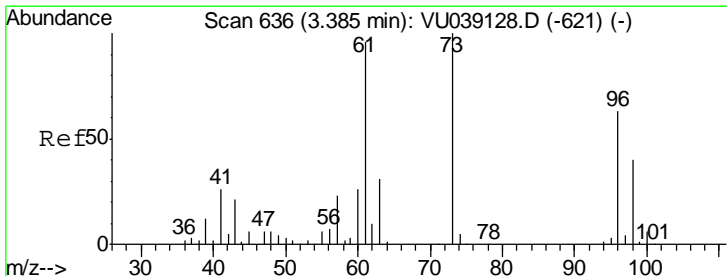
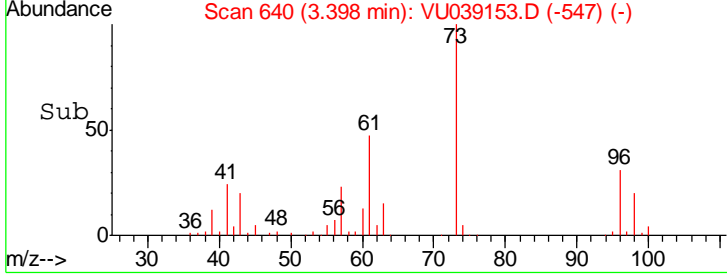
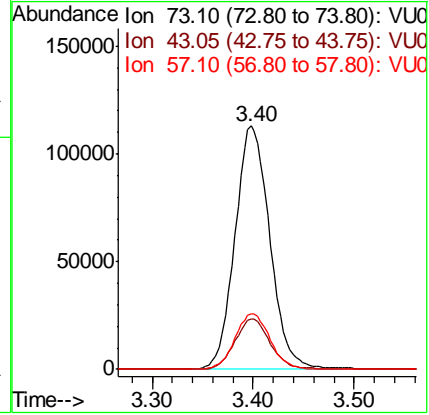
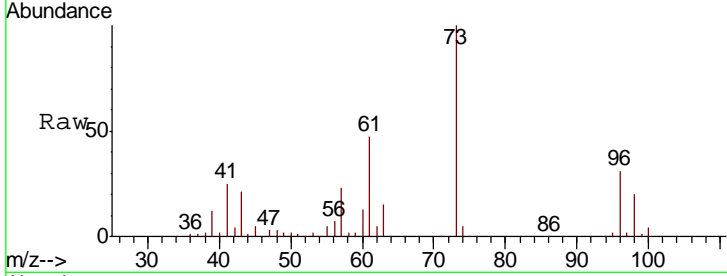


#17
Methyl tert-butyl Ether
Concen: 5.167 ug/L
RT: 3.40 min Scan# 640
Delta R.T. 0.00 min
Lab File: VU039153.D
Acq: 26 Jun 2020 09:32

Instrument :
MSVOA_U
ClientSampleId :
VSTD00519

Tgt Ion: 73 Resp: 271236

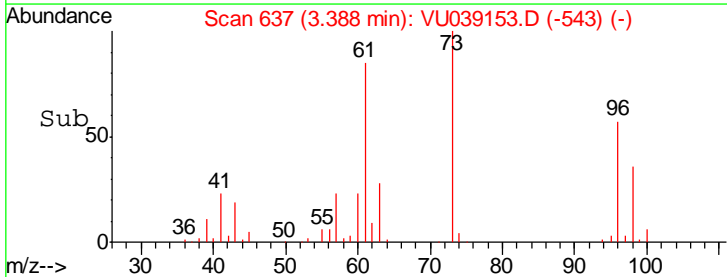
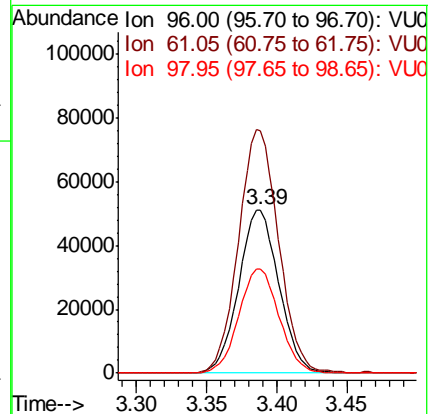
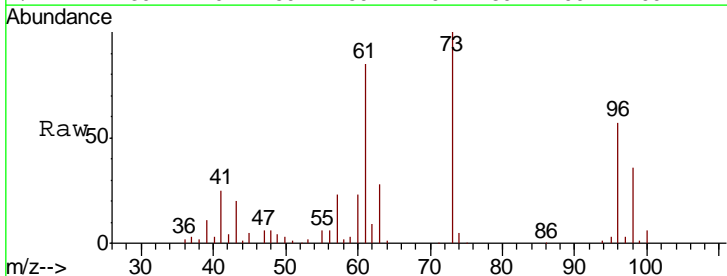
Ion	Ratio	Lower	Upper
73	100		
43	20.8	16.6	24.8
57	23.0	18.2	27.4

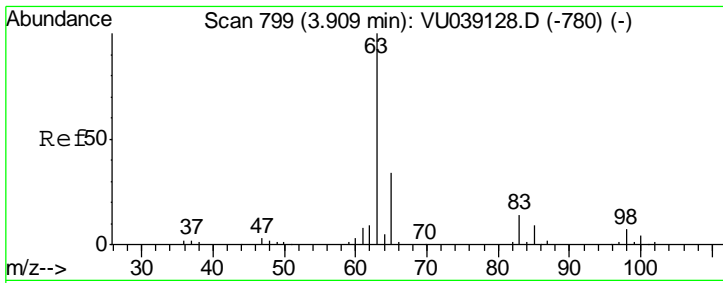


#18
trans-1,2-Dichloroethene
Concen: 5.169 ug/L
RT: 3.39 min Scan# 637
Delta R.T. 0.00 min
Lab File: VU039153.D
Acq: 26 Jun 2020 09:32

Tgt Ion: 96 Resp: 101983

Ion	Ratio	Lower	Upper
96	100		
61	148.6	103.5	192.3
98	63.7	44.9	83.5

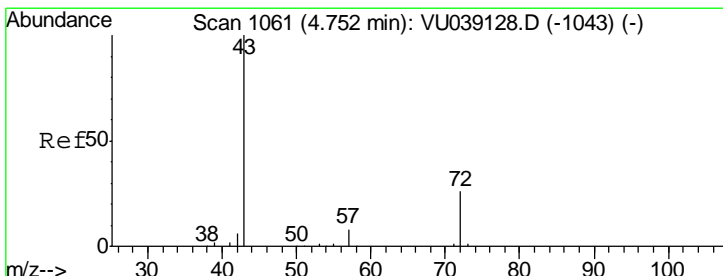
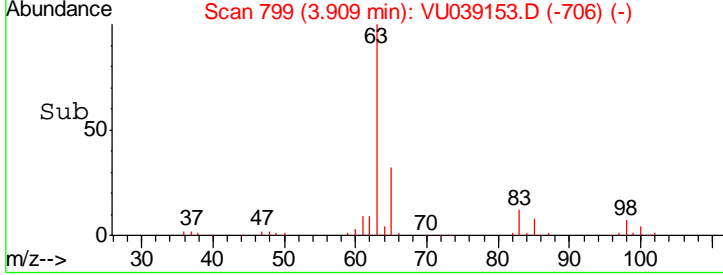
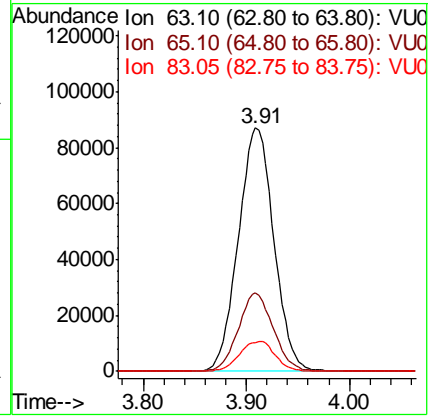
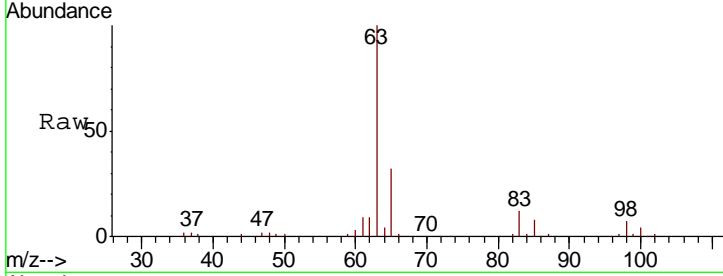




#19
 1,1-Dichloroethane
 Concen: 5.322 ug/L
 RT: 3.91 min Scan# 799
 Delta R.T. 0.00 min
 Lab File: VU039153.D
 Acq: 26 Jun 2020 09:32

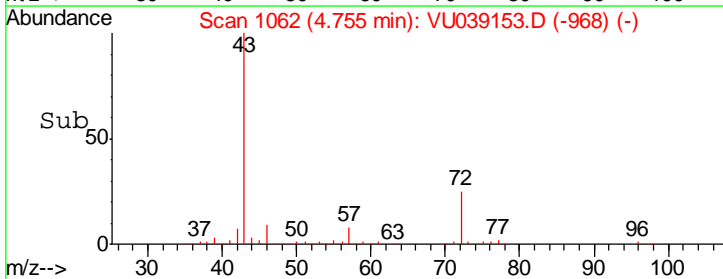
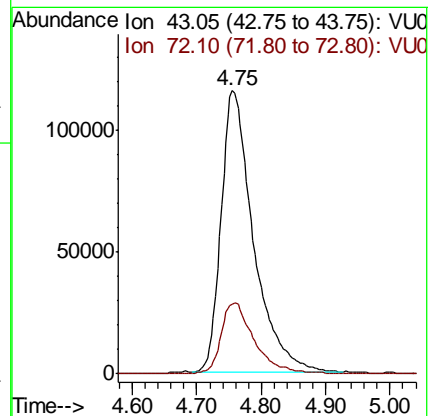
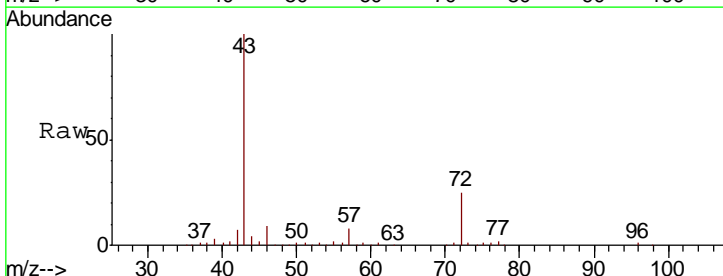
Instrument :
 MSVOA_U
ClientSampled :
 VSTD00519

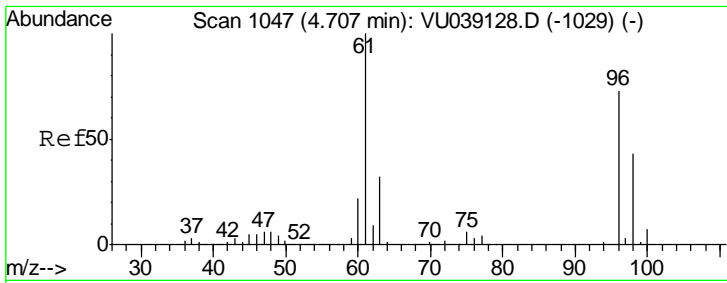
Tgt Ion	Resp	Lower	Upper
63	100		
65	32.2	22.1	41.1
83	11.9	9.3	17.3



#21
 2-Butanone
 Concen: 55.483 ug/L
 RT: 4.75 min Scan# 1062
 Delta R.T. 0.00 min
 Lab File: VU039153.D
 Acq: 26 Jun 2020 09:32

Tgt Ion	Resp	Lower	Upper
43	100		
72	25.0	13.1	39.3

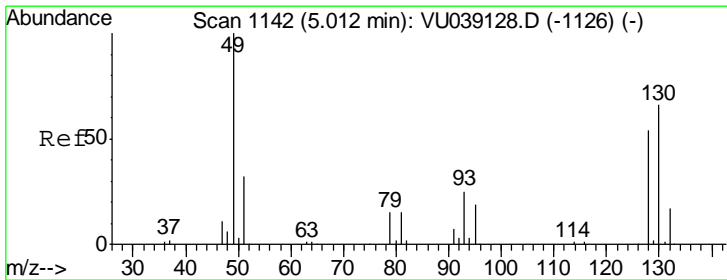
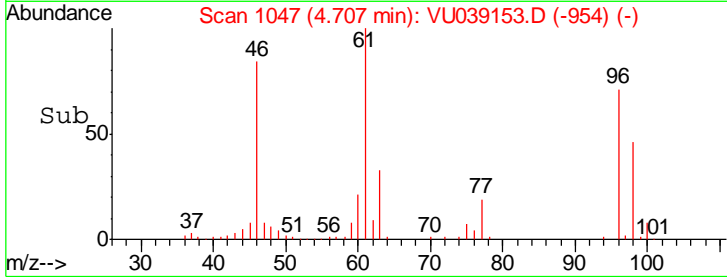
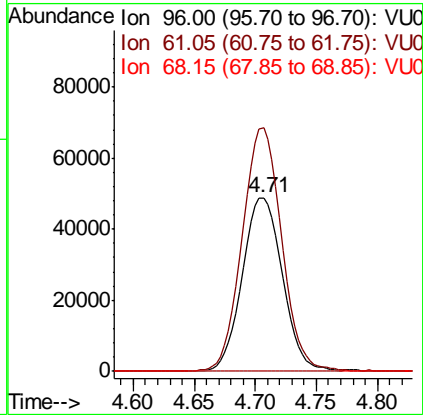
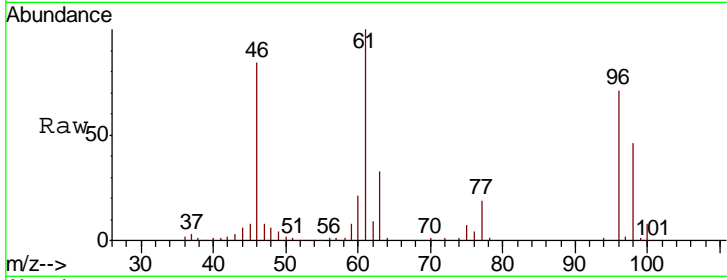




#22
 cis-1,2-Dichloroethene
 Concen: 5.231 ug/L
 RT: 4.71 min Scan# 1047
 Delta R.T. 0.00 min
 Lab File: VU039153.D
 Acq: 26 Jun 2020 09:32

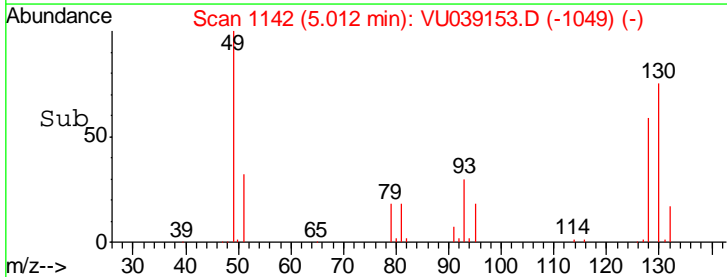
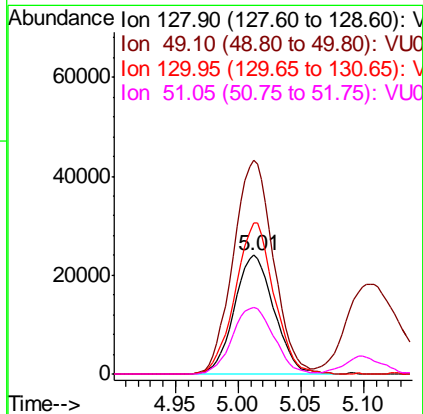
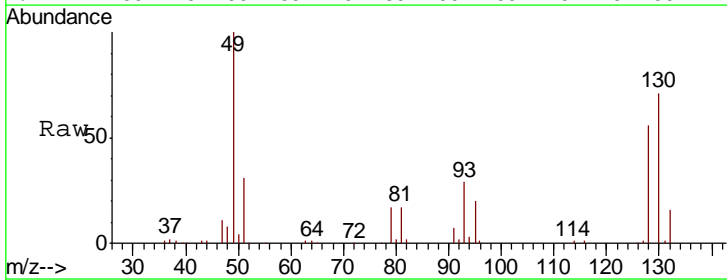
Instrument :
 MSVOA_U
ClientSampled :
 VSTD00519

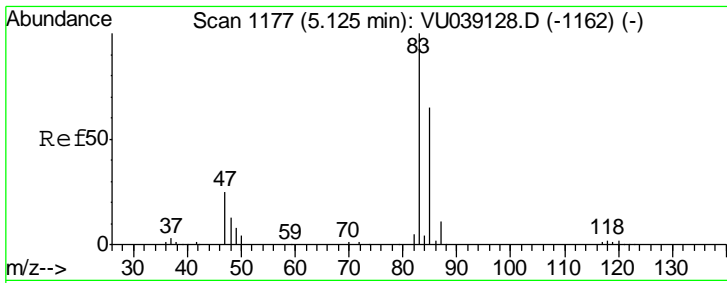
Tgt Ion	Resp	Lower	Upper
96	111375		
61	140.3	100.8	187.2
68	0.0	0.0	0.0



#23
 Bromochloromethane
 Concen: 5.408 ug/L
 RT: 5.01 min Scan# 1142
 Delta R.T. 0.00 min
 Lab File: VU039153.D
 Acq: 26 Jun 2020 09:32

Tgt Ion	Resp	Lower	Upper
128	52994		
128	100		
49	180.0	127.3	236.5
130	127.4	84.4	156.7
51	56.0	47.5	71.3

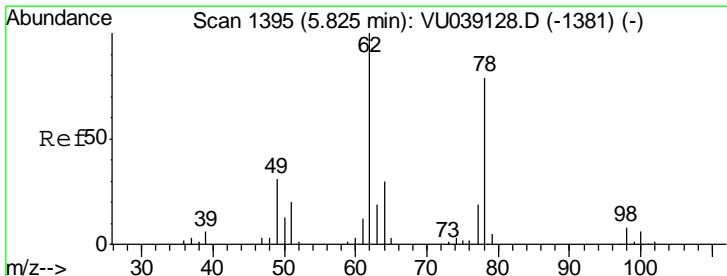
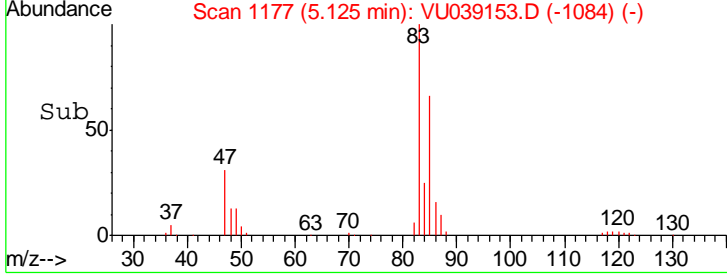
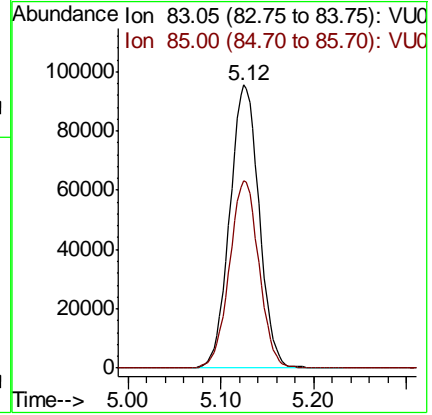
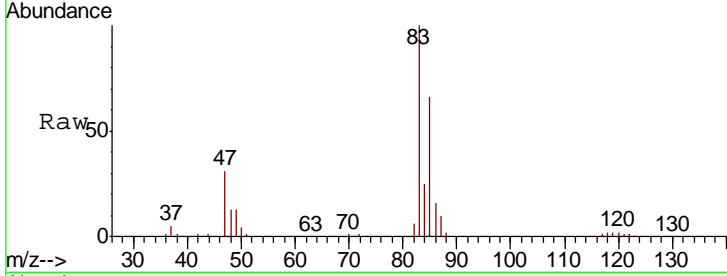




#25
 Chloroform
 Concen: 5.323 ug/L
 RT: 5.12 min Scan# 1177
 Delta R.T. 0.00 min
 Lab File: VU039153.D
 Acq: 26 Jun 2020 09:32

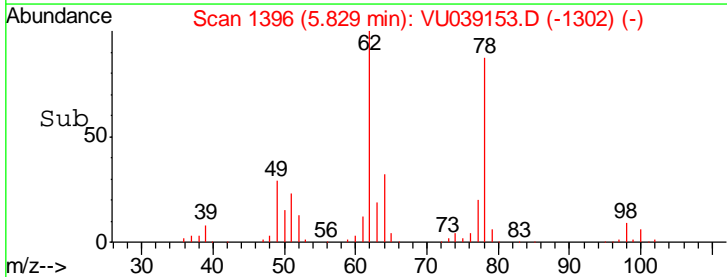
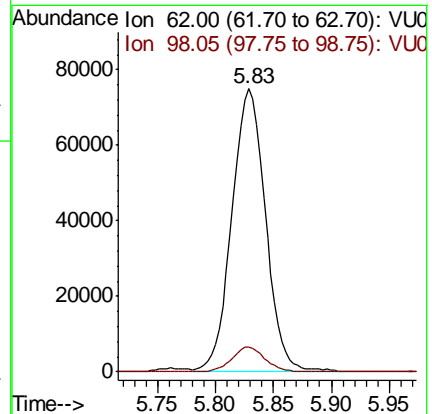
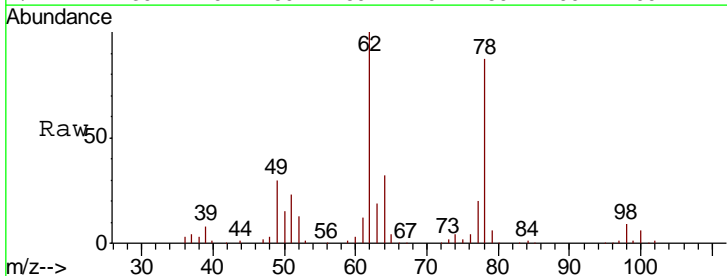
Instrument :
 MSVOA_U
ClientSampled :
 VSTD00519

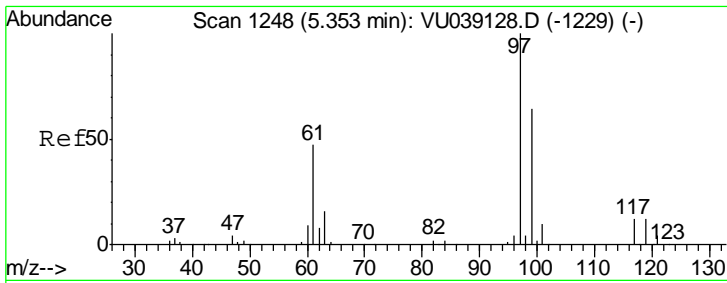
Tgt Ion	Resp	Lower	Upper
83	100		
85	66.0	43.8	81.4



#27
 1,2-Dichloroethane
 Concen: 5.331 ug/L
 RT: 5.83 min Scan# 1396
 Delta R.T. 0.00 min
 Lab File: VU039153.D
 Acq: 26 Jun 2020 09:32

Tgt Ion	Resp	Lower	Upper
62	100		
98	8.9	7.7	11.5

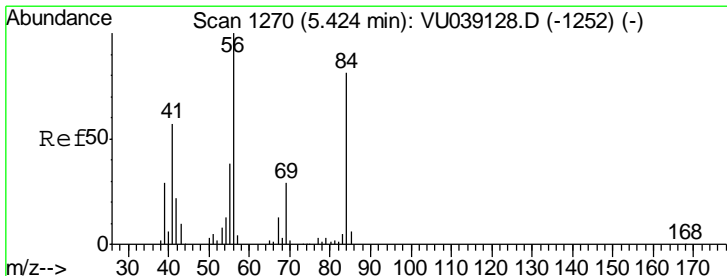
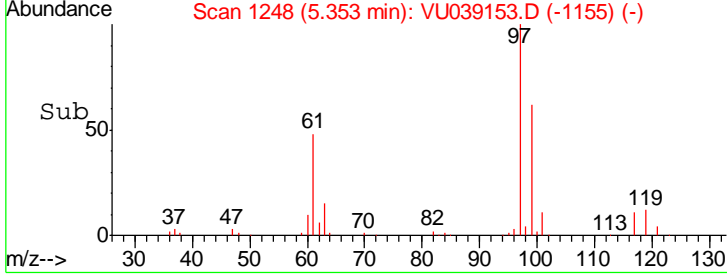
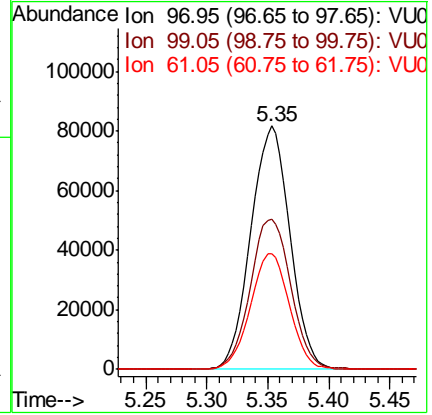
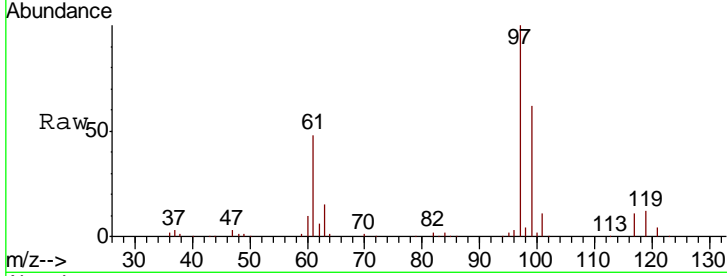




#29
 1,1,1-Trichloroethane
 Concen: 5.389 ug/L
 RT: 5.35 min Scan# 1248
 Delta R.T. 0.00 min
 Lab File: VU039153.D
 Acq: 26 Jun 2020 09:32

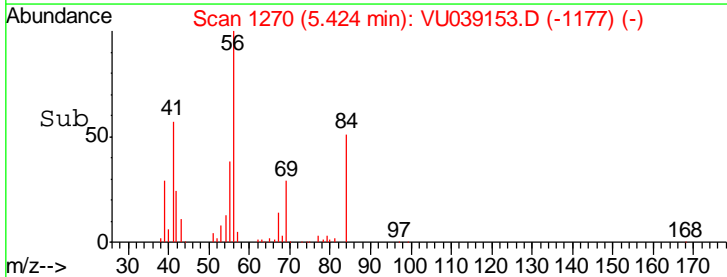
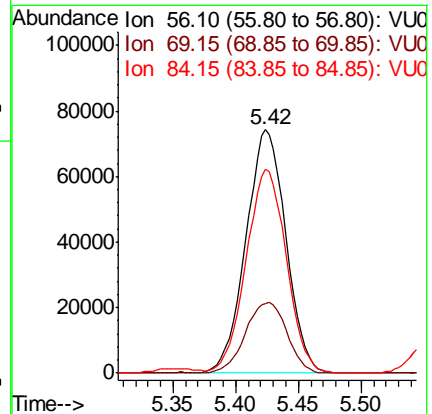
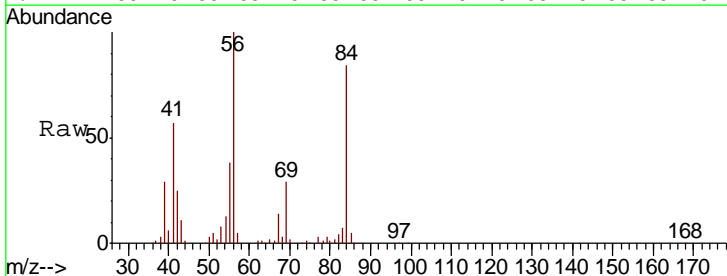
Instrument : MSVOA_U
 ClientSampled : VSTD00519

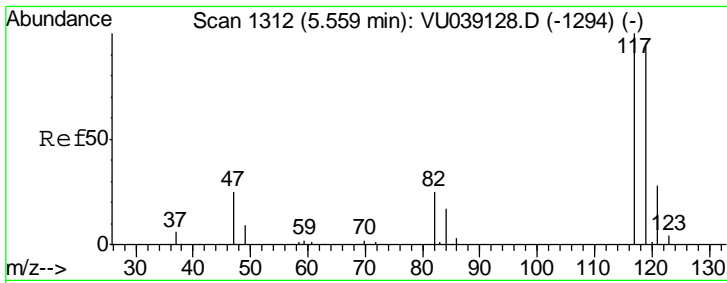
Tgt Ion	Resp	Lower	Upper
97	180993		
99	64.2	50.3	75.5
61	47.5	37.8	56.6



#30
 Cyclohexane
 Concen: 5.271 ug/L
 RT: 5.42 min Scan# 1270
 Delta R.T. 0.00 min
 Lab File: VU039153.D
 Acq: 26 Jun 2020 09:32

Tgt Ion	Resp	Lower	Upper
56	164698		
69	30.1	23.3	34.9
84	84.5	67.1	100.7

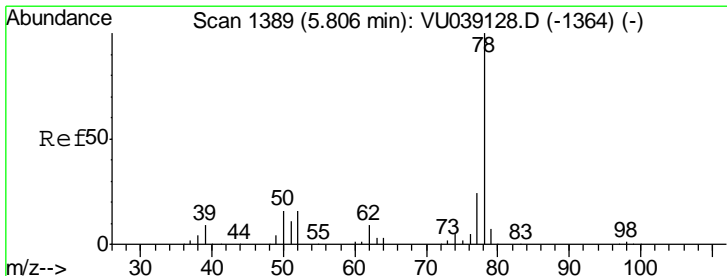
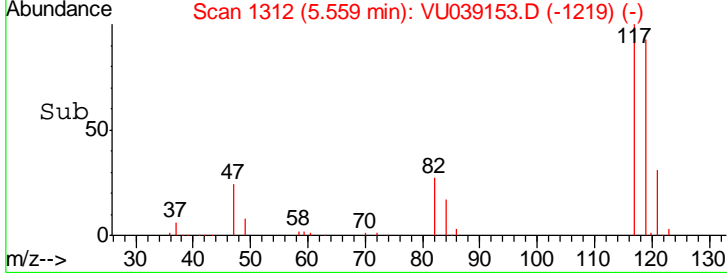
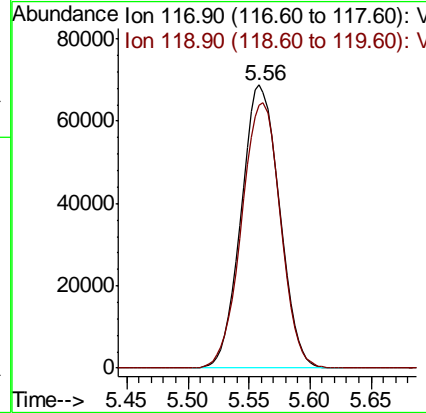
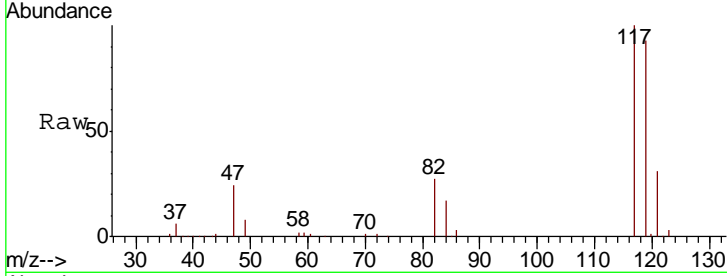




#31
 Carbon tetrachloride
 Concen: 5.345 ug/L
 RT: 5.56 min Scan# 1312
 Delta R.T. 0.00 min
 Lab File: VU039153.D
 Acq: 26 Jun 2020 09:32

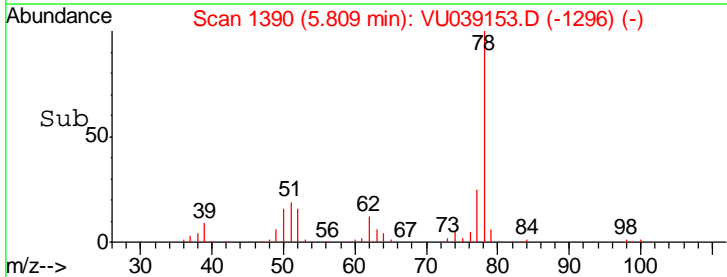
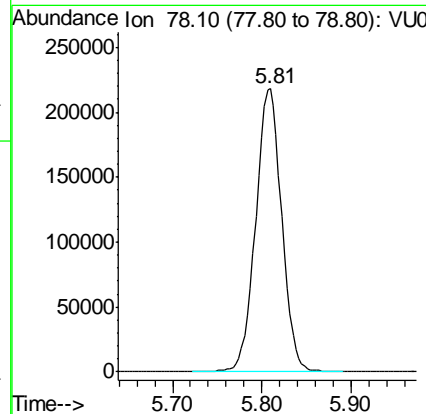
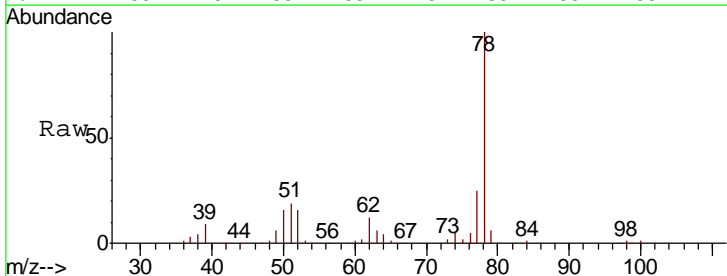
Instrument : MSVOA_U
 ClientSampled : VSTD00519

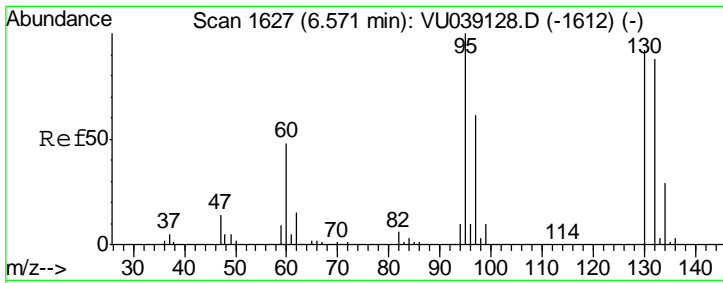
Tgt Ion: 117 Resp: 149470
 Ion Ratio Lower Upper
 117 100
 119 95.0 75.7 113.5



#33
 Benzene
 Concen: 5.267 ug/L
 RT: 5.81 min Scan# 1390
 Delta R.T. 0.00 min
 Lab File: VU039153.D
 Acq: 26 Jun 2020 09:32

Tgt Ion: 78 Resp: 445292

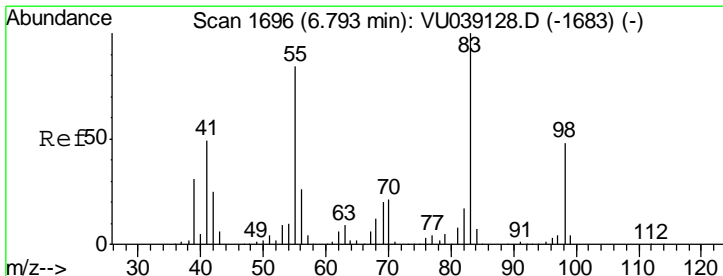
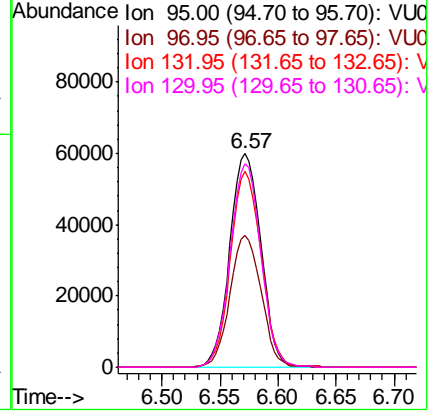
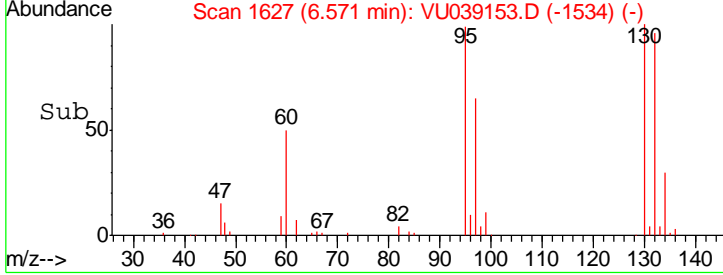
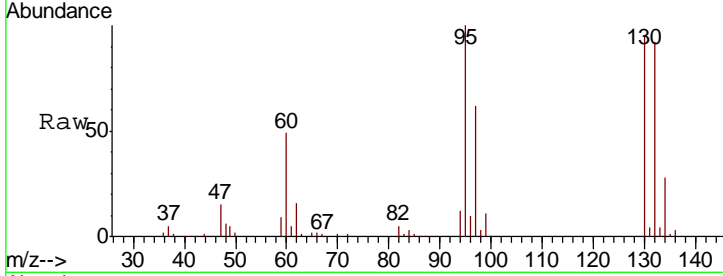




#34
 Trichloroethene
 Concen: 5.467 ug/L
 RT: 6.57 min Scan# 1627
 Delta R.T. 0.00 min
 Lab File: VU039153.D
 Acq: 26 Jun 2020 09:32

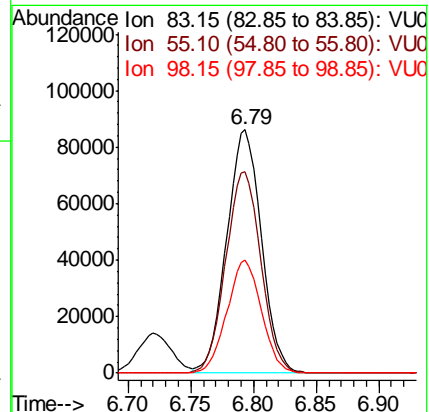
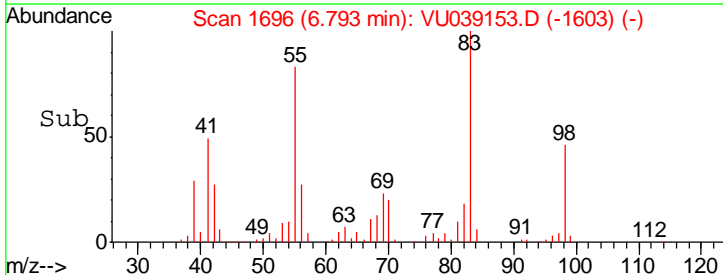
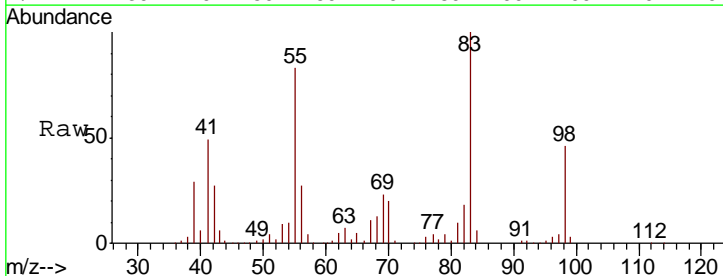
Instrument : MSVOA_U
 ClientSampled : VSTD00519

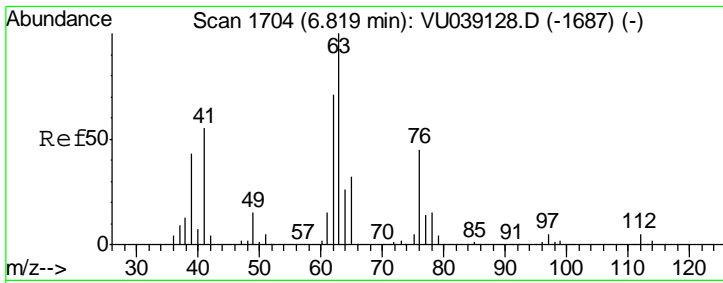
Tgt Ion	Resp	Lower	Upper
95	111799		
97	61.6	45.1	83.7
132	91.9	65.1	120.9
130	95.2	68.6	127.4



#35
 Methylcyclohexane
 Concen: 5.442 ug/L
 RT: 6.79 min Scan# 1696
 Delta R.T. 0.00 min
 Lab File: VU039153.D
 Acq: 26 Jun 2020 09:32

Tgt Ion	Resp	Lower	Upper
83	165153		
55	84.1	65.5	98.3
98	46.4	36.5	54.7

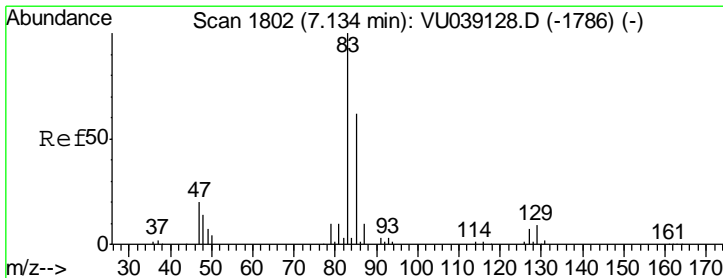
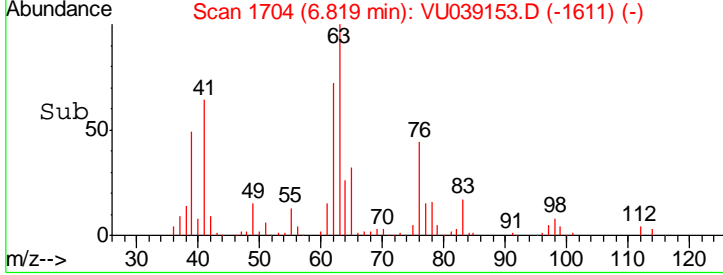
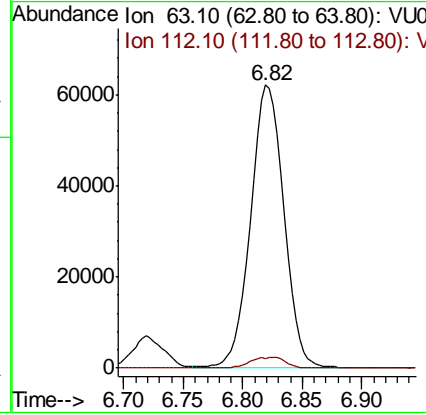
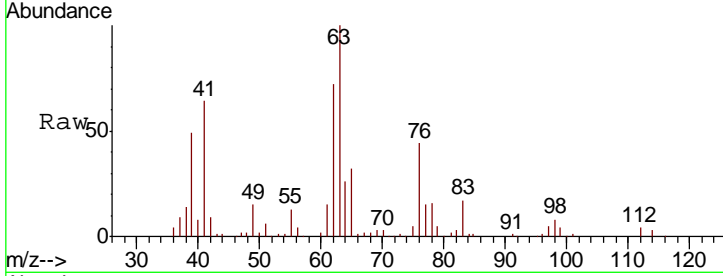




#37
 1,2-Dichloropropane
 Concen: 5.225 ug/L
 RT: 6.82 min Scan# 1704
 Delta R.T. 0.00 min
 Lab File: VU039153.D
 Acq: 26 Jun 2020 09:32

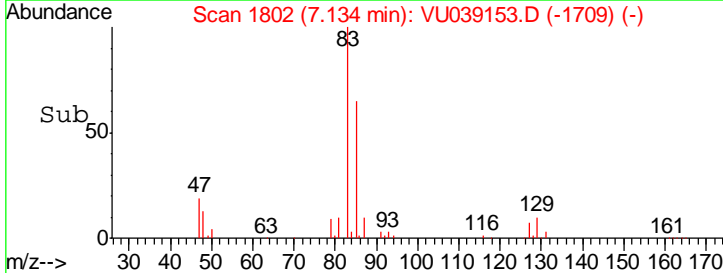
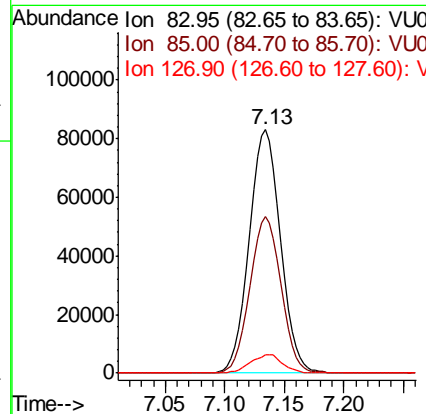
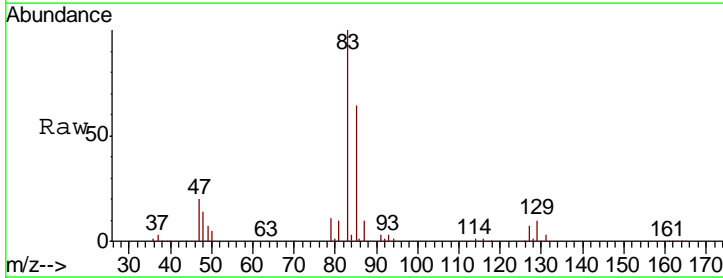
Instrument :
 MSVOA_U
 ClientSampled :
 VSTD00519

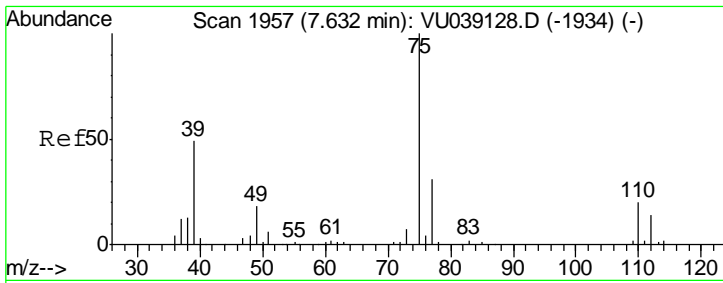
Tgt Ion: 63 Resp: 119692
 Ion Ratio Lower Upper
 63 100
 112 2.1 3.4 5.2#



#38
 Bromodichloromethane
 Concen: 5.308 ug/L
 RT: 7.13 min Scan# 1802
 Delta R.T. 0.00 min
 Lab File: VU039153.D
 Acq: 26 Jun 2020 09:32

Tgt Ion: 83 Resp: 151591
 Ion Ratio Lower Upper
 83 100
 85 64.3 44.9 83.3
 127 7.3 6.3 9.5

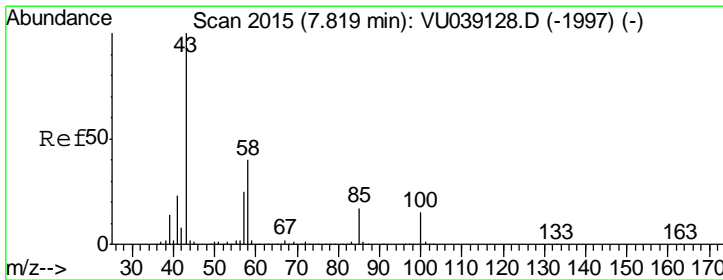
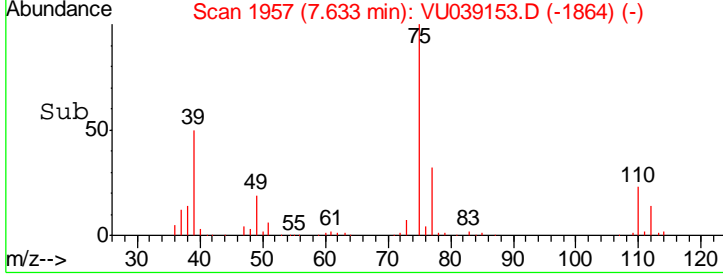
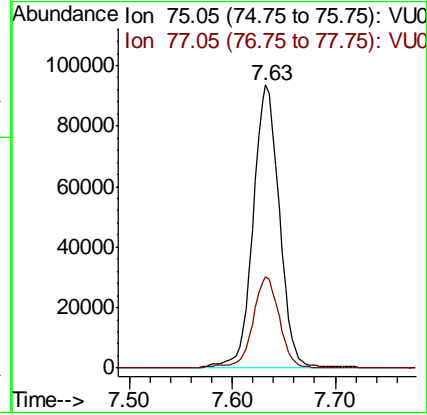
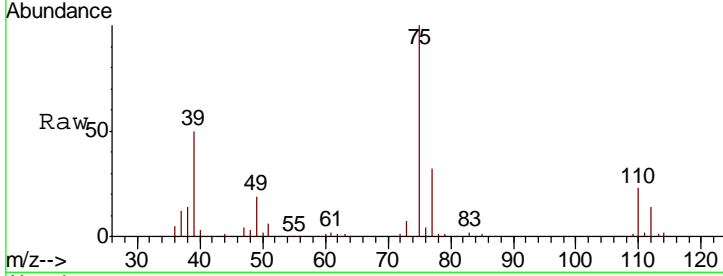




#39
 cis-1,3-Dichloropropene
 Concen: 5.223 ug/L
 RT: 7.63 min Scan# 1957
 Delta R.T. 0.00 min
 Lab File: VU039153.D
 Acq: 26 Jun 2020 09:32

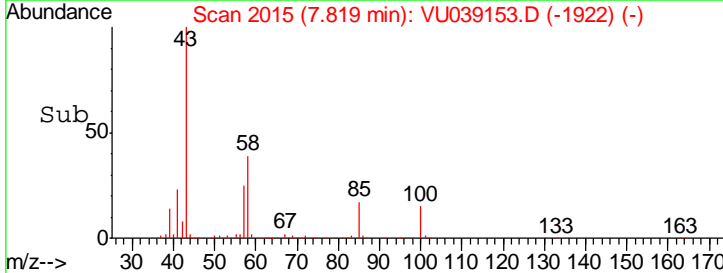
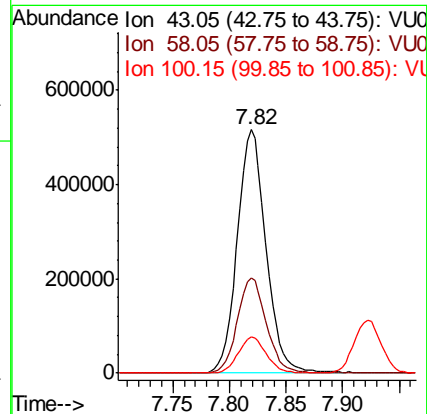
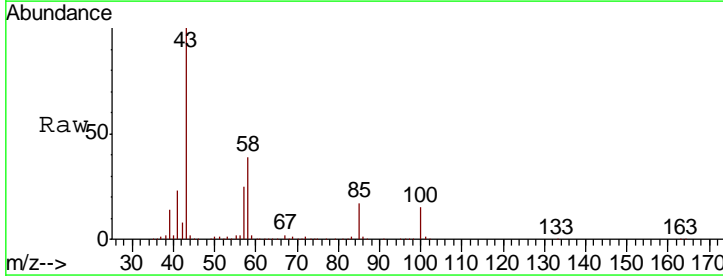
Instrument :
 MSVOA_U
 ClientSampled :
 VSTD00519

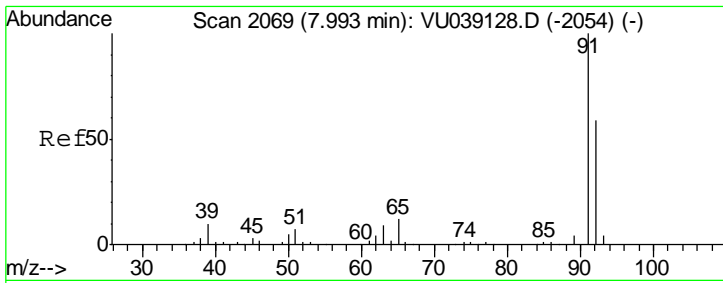
Tot Ion: 75 Resp: 165843
 Ion Ratio Lower Upper
 75 100
 77 32.3 21.6 40.0



#40
 4-Methyl-2-pentanone
 Concen: 53.442 ug/L
 RT: 7.82 min Scan# 2015
 Delta R.T. 0.00 min
 Lab File: VU039153.D
 Acq: 26 Jun 2020 09:32

Tgt Ion: 43 Resp: 913690
 Ion Ratio Lower Upper
 43 100
 58 39.5 31.3 46.9
 100 14.6 11.6 17.4

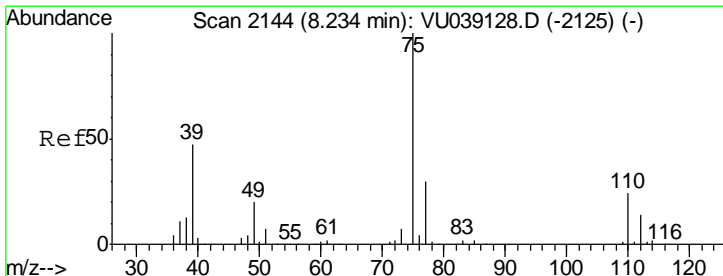
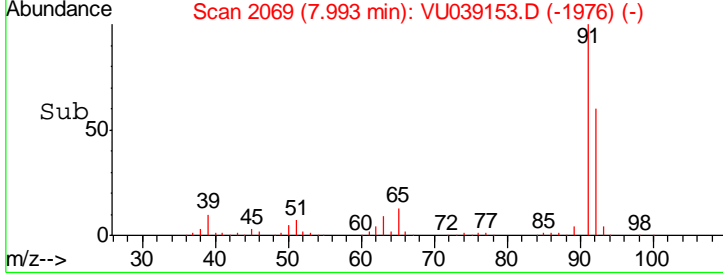
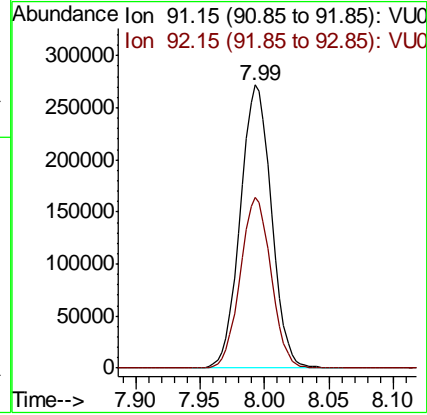
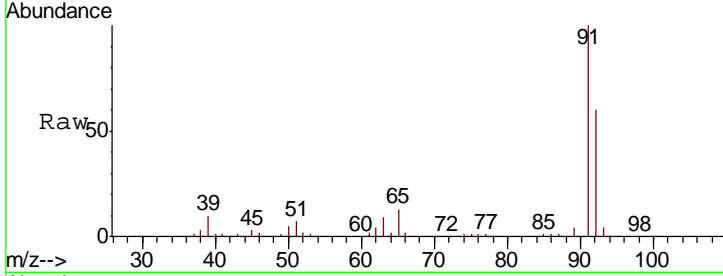




#42
 Toluene
 Concen: 5.450 ug/L
 RT: 7.99 min Scan# 2069
 Delta R.T. 0.00 min
 Lab File: VU039153.D
 Acq: 26 Jun 2020 09:32

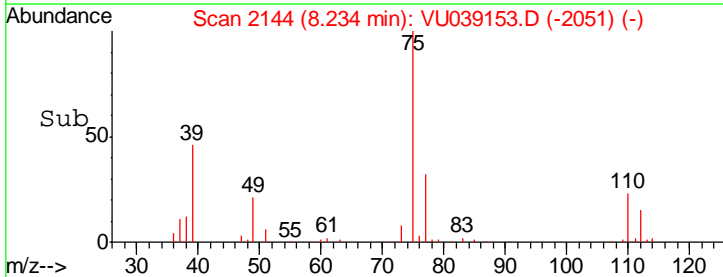
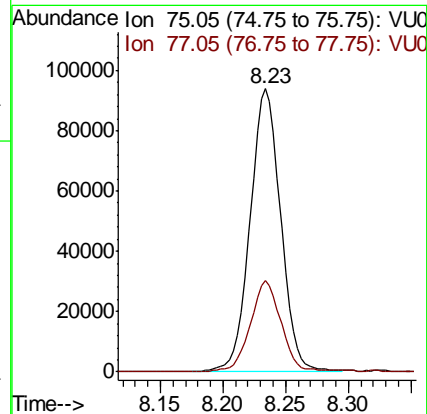
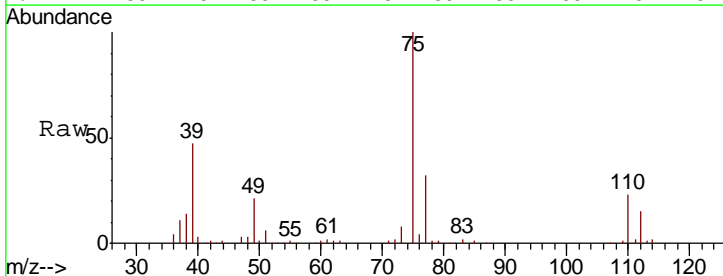
Instrument :
 MSVOA_U
 ClientSampled :
 VSTD00519

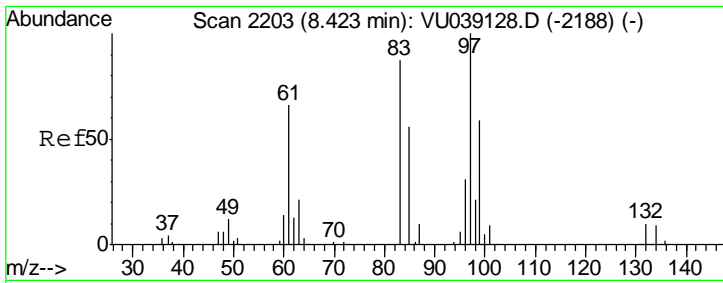
Tot Ion: 91 Resp: 457363
 Ion Ratio Lower Upper
 91 100
 92 60.5 42.1 78.1



#44
 trans-1,3-Dichloropropene
 Concen: 5.384 ug/L
 RT: 8.23 min Scan# 2144
 Delta R.T. 0.00 min
 Lab File: VU039153.D
 Acq: 26 Jun 2020 09:32

Tgt Ion: 75 Resp: 159942
 Ion Ratio Lower Upper
 75 100
 77 32.1 22.6 42.0

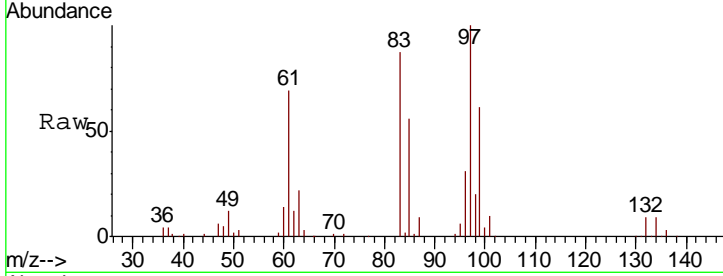




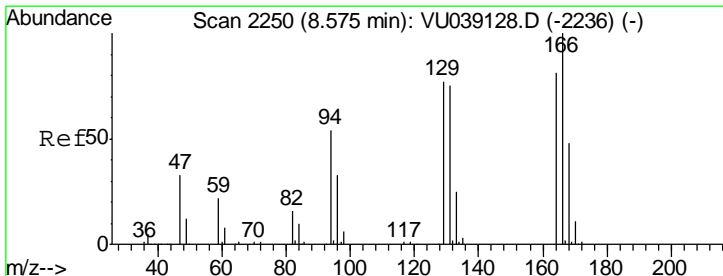
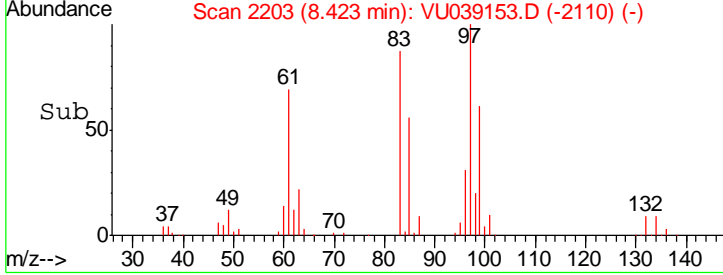
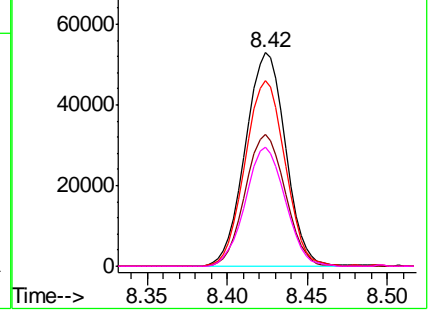
#45
 1,1,2-Trichloroethane
 Concen: 5.331 ug/L
 RT: 8.42 min Scan# 2203
 Delta R.T. 0.00 min
 Lab File: VU039153.D
 Acq: 26 Jun 2020 09:32

Instrument :
 MSVOA_U
 ClientSampled :
 VSTD00519

Tgt Ion	Resp	Lower	Upper
97	100		
99	61.5	45.4	84.4
83	86.9	64.4	119.6
85	55.8	41.7	77.5

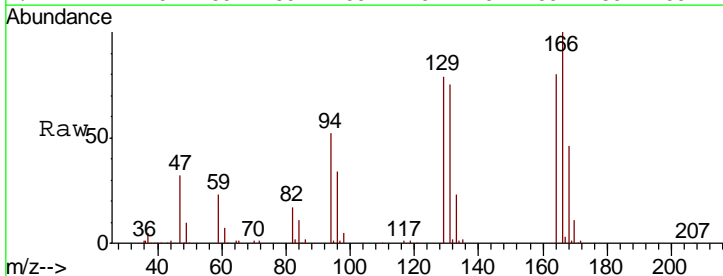


Abundance Ion 96.95 (96.65 to 97.65): VU0
 Ion 99.05 (98.75 to 99.75): VU0
 Ion 82.95 (82.65 to 83.65): VU0
 Ion 85.00 (84.70 to 85.70): VU0

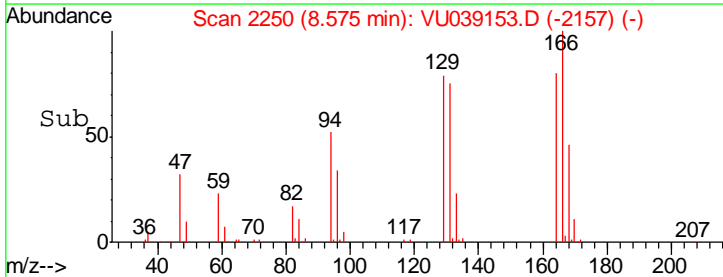
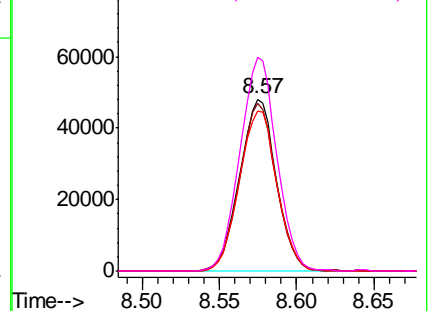


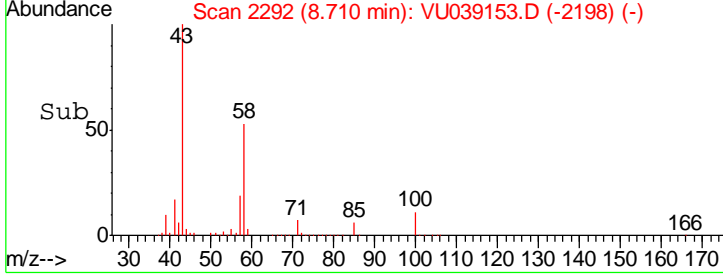
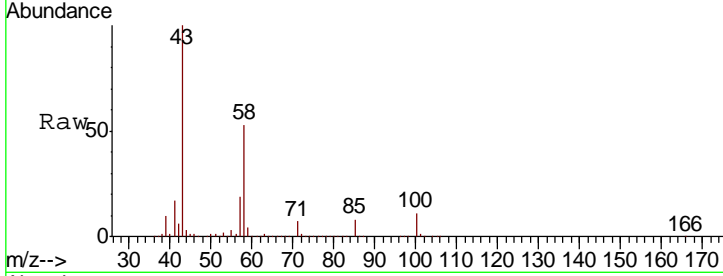
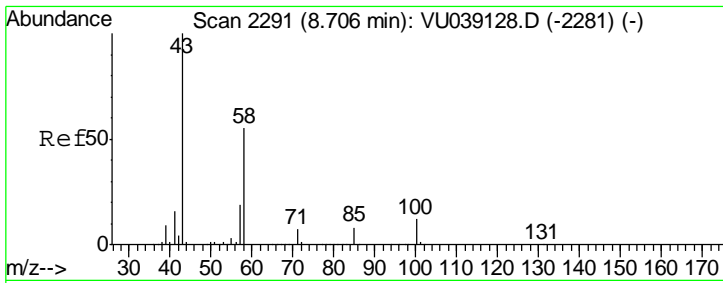
#47
 Tetrachloroethene
 Concen: 5.373 ug/L
 RT: 8.57 min Scan# 2250
 Delta R.T. 0.00 min
 Lab File: VU039153.D
 Acq: 26 Jun 2020 09:32

Tgt Ion	Resp	Lower	Upper
164	100		
129	97.8	71.3	132.5
131	93.1	68.3	126.8
166	124.4	90.8	168.6



Abundance Ion 163.90 (163.60 to 164.60): V
 Ion 128.95 (128.65 to 129.65): V
 Ion 130.95 (130.65 to 131.65): V
 Ion 165.90 (165.60 to 166.60): V



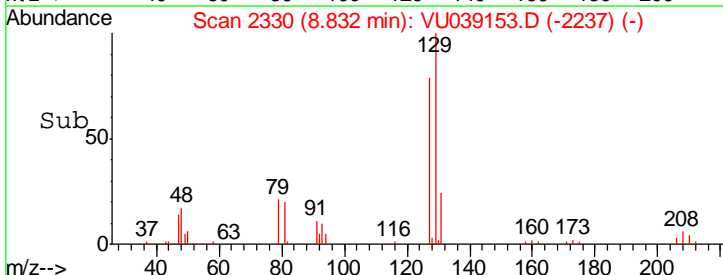
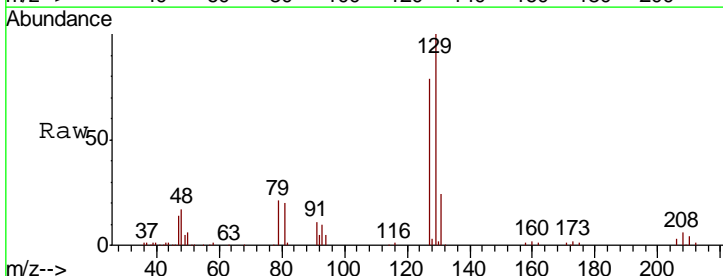
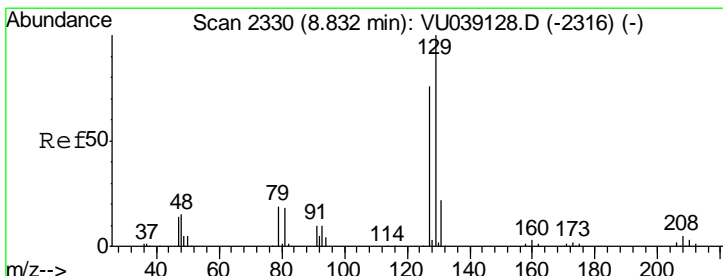
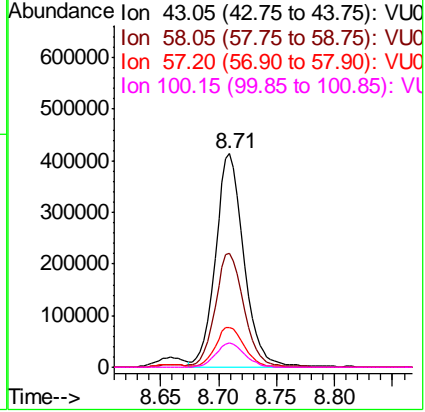


#48
 2-Hexanone
 Concen: 55.943 ug/L
 RT: 8.71 min Scan# 2292
 Delta R.T. 0.00 min
 Lab File: VU039153.D
 Acq: 26 Jun 2020 09:32

Instrument :
 MSVOA_U
 ClientSampled :
 VSTD00519

Tgt Ion: 43 Resp: 701167

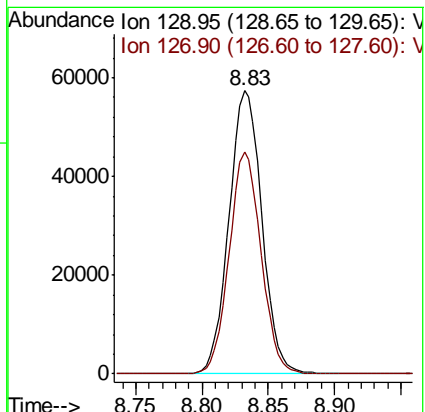
Ion	Ratio	Lower	Upper
43	100		
58	54.7	44.0	66.0
57	19.4	15.0	22.6
100	11.6	9.4	14.2

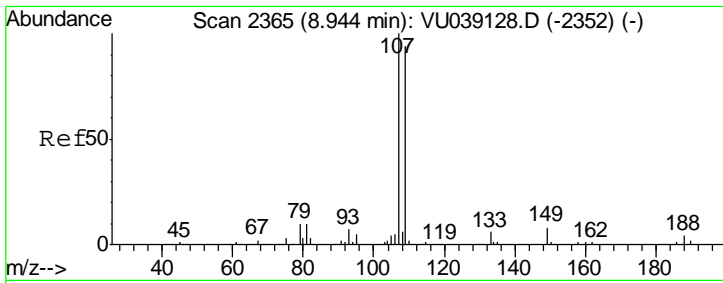


#49
 Dibromochloromethane
 Concen: 5.357 ug/L
 RT: 8.83 min Scan# 2330
 Delta R.T. 0.00 min
 Lab File: VU039153.D
 Acq: 26 Jun 2020 09:32

Tgt Ion: 129 Resp: 99168

Ion	Ratio	Lower	Upper
129	100		
127	78.6	55.4	103.0

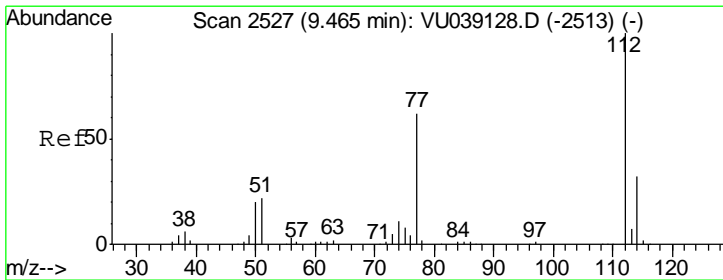
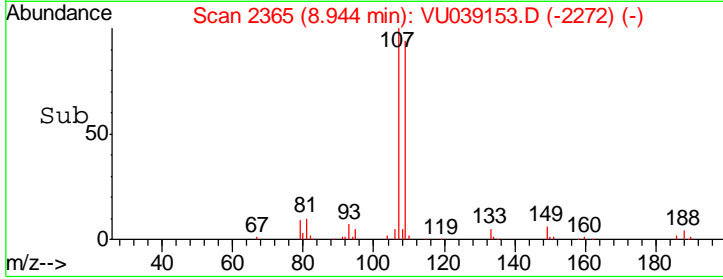
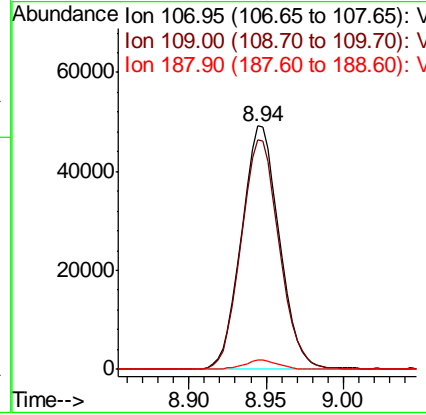
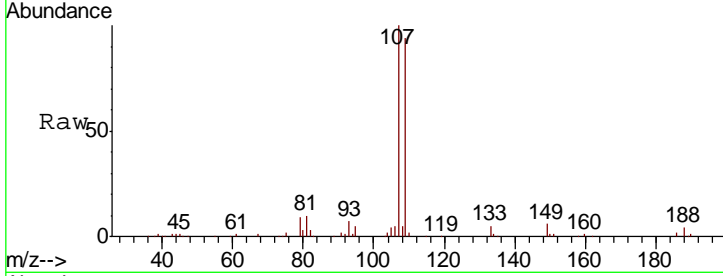




#50
 1,2-Dibromoethane
 Concen: 5.212 ug/L
 RT: 8.94 min Scan# 2365
 Delta R.T. 0.00 min
 Lab File: VU039153.D
 Acq: 26 Jun 2020 09:32

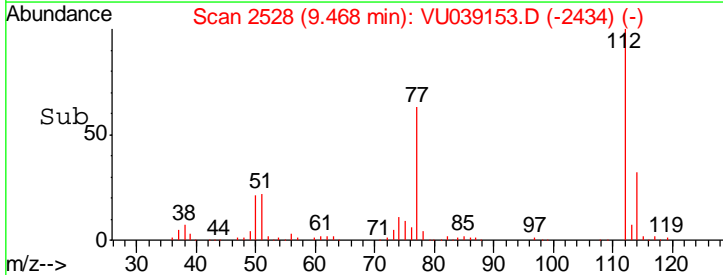
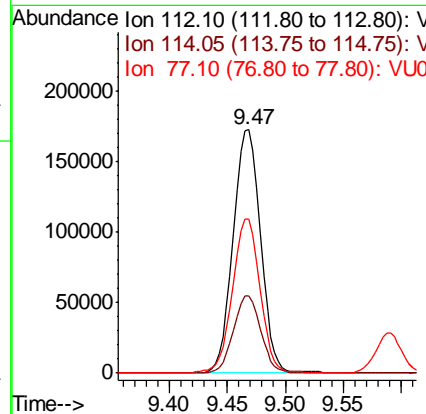
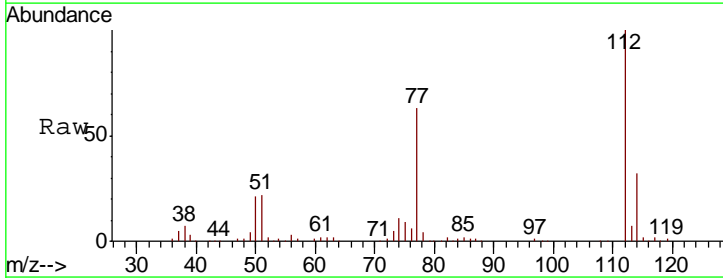
Instrument :
 MSVOA_U
 ClientSampled :
 VSTD00519

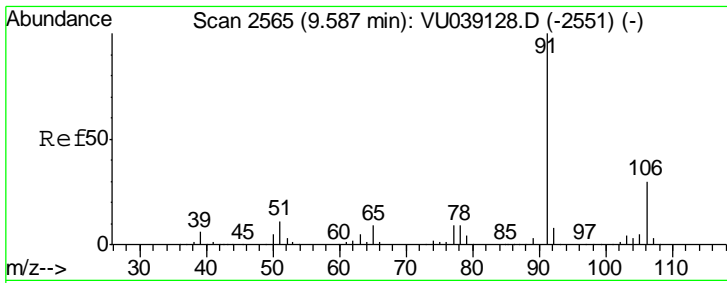
Tgt Ion	Resp	Lower	Upper
107	100		
109	94.4	64.8	120.4
188	3.8	2.4	3.6#



#51
 Chlorobenzene
 Concen: 5.353 ug/L
 RT: 9.47 min Scan# 2528
 Delta R.T. 0.00 min
 Lab File: VU039153.D
 Acq: 26 Jun 2020 09:32

Tgt Ion	Resp	Lower	Upper
112	100		
114	31.7	22.0	41.0
77	63.2	50.2	75.4

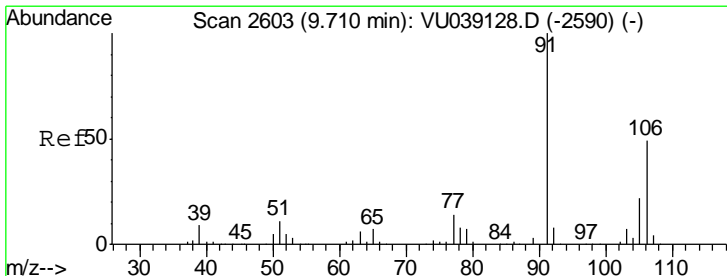
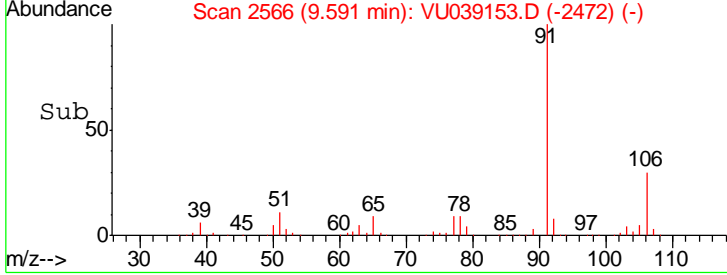
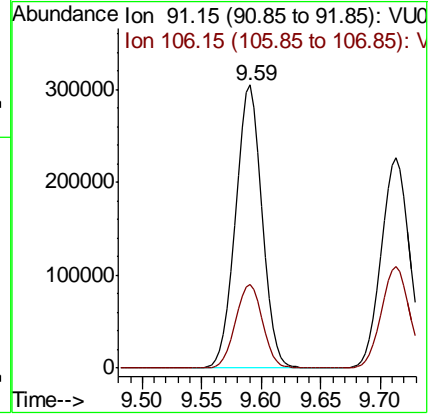
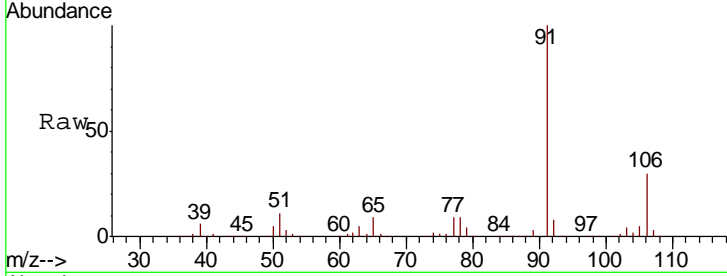




#52
 Ethylbenzene
 Concen: 5.348 ug/L
 RT: 9.59 min Scan# 2566
 Delta R.T. 0.00 min
 Lab File: VU039153.D
 Acq: 26 Jun 2020 09:32

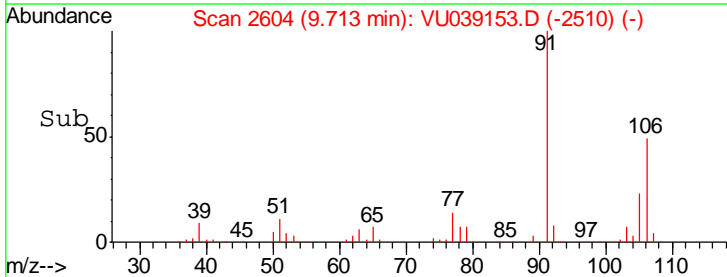
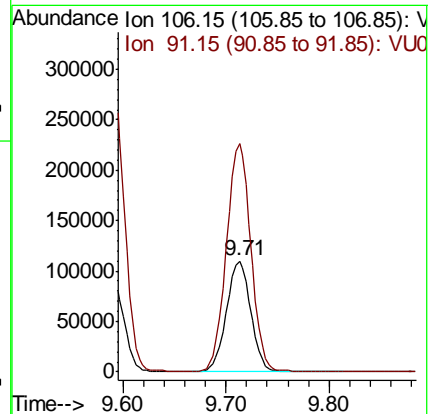
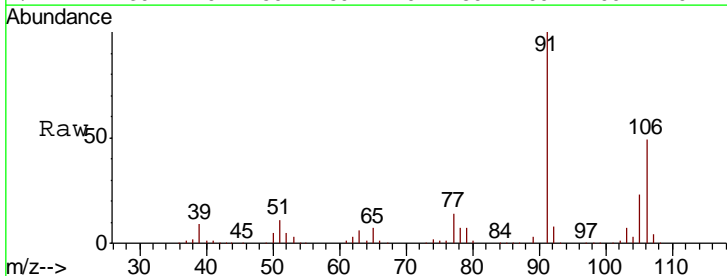
Instrument : MSVOA_U
 ClientSampled : VSTD00519

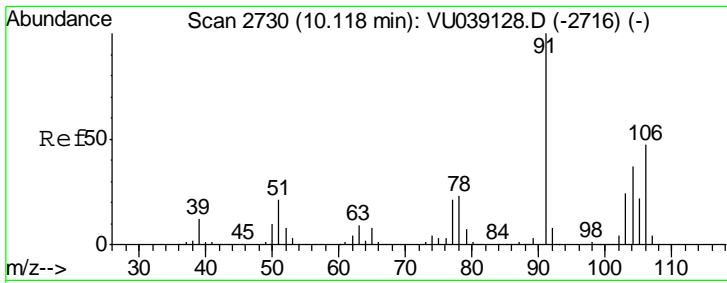
Tgt Ion: 91 Resp: 471808
 Ion Ratio Lower Upper
 91 100
 106 29.7 21.3 39.6



#53
 m,p-Xylene
 Concen: 5.587 ug/L
 RT: 9.71 min Scan# 2604
 Delta R.T. 0.00 min
 Lab File: VU039153.D
 Acq: 26 Jun 2020 09:32

Tgt Ion: 106 Resp: 181232
 Ion Ratio Lower Upper
 106 100
 91 205.8 143.6 266.8

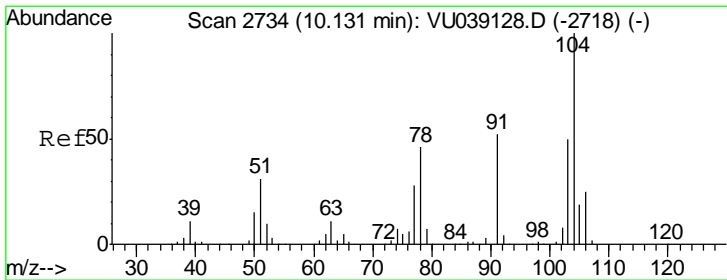
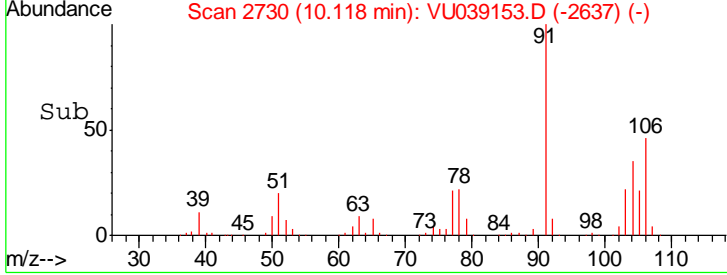
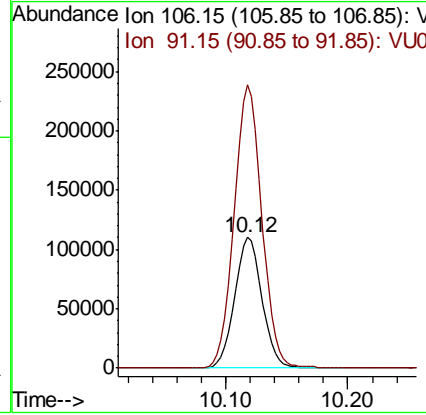
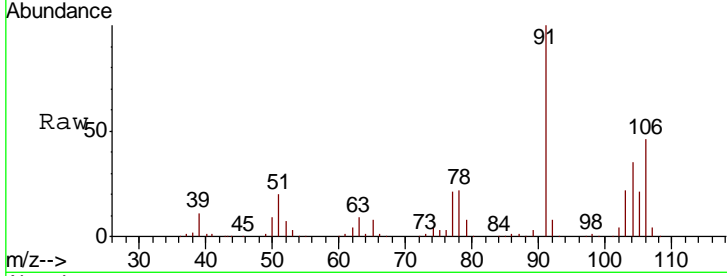




#54
 o-Xylene
 Concen: 5.539 ug/L
 RT: 10.12 min Scan# 2730
 Delta R.T. 0.00 min
 Lab File: VU039153.D
 Acq: 26 Jun 2020 09:32

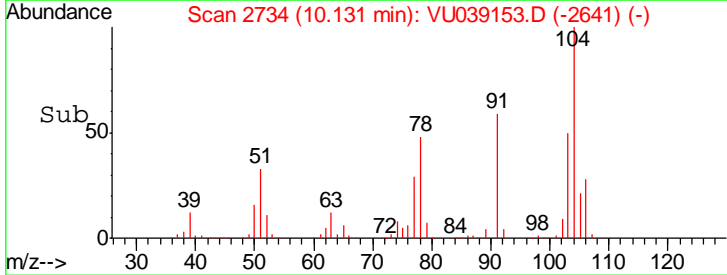
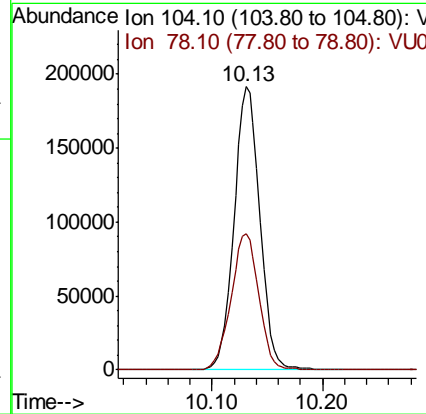
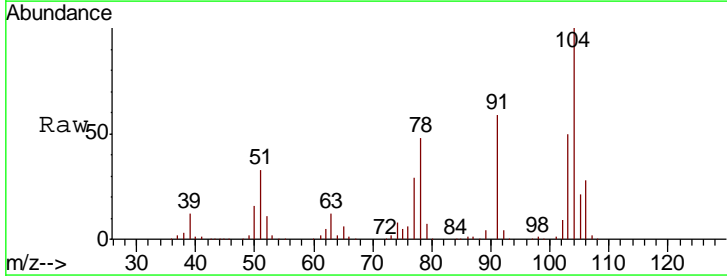
Instrument : MSVOA_U
 ClientSampled : VSTD00519

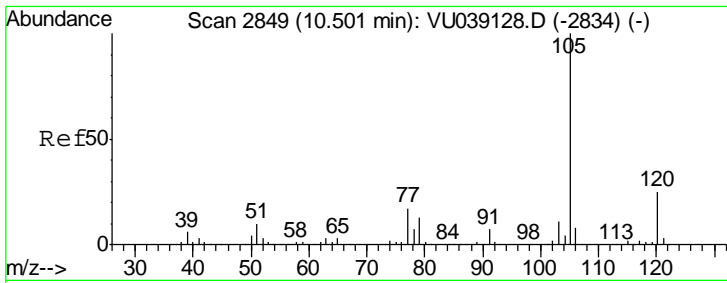
Tgt Ion:106 Resp: 172604
 Ion Ratio Lower Upper
 106 100
 91 216.4 153.5 285.1



#55
 Styrene
 Concen: 5.669 ug/L
 RT: 10.13 min Scan# 2734
 Delta R.T. 0.00 min
 Lab File: VU039153.D
 Acq: 26 Jun 2020 09:32

Tgt Ion:104 Resp: 310233
 Ion Ratio Lower Upper
 104 100
 78 48.2 33.5 62.1

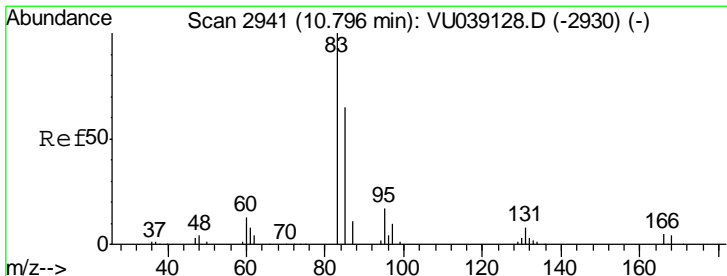
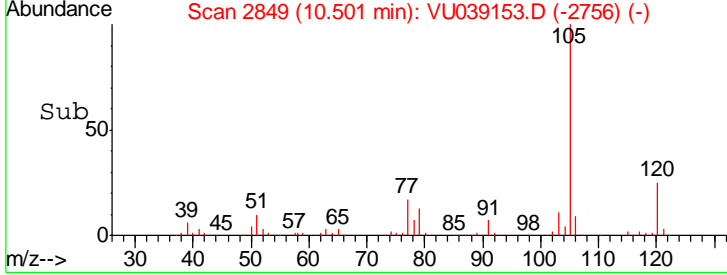
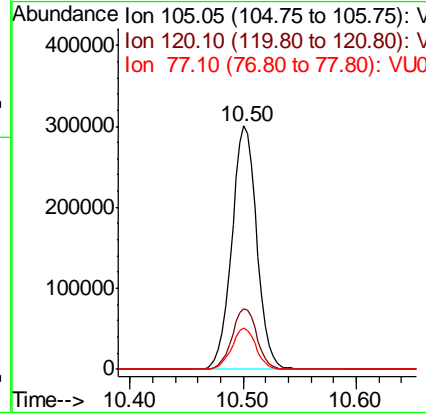
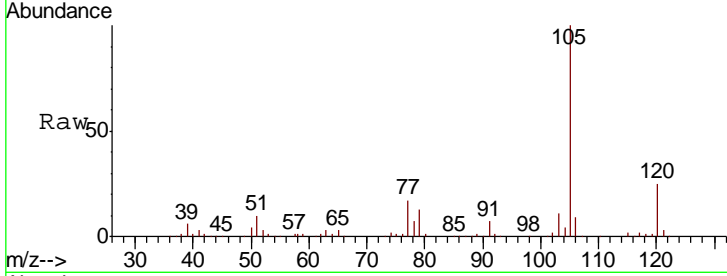




#56
 Isopropylbenzene
 Concen: 5.629 ug/L
 RT: 10.50 min Scan# 2849
 Delta R.T. 0.00 min
 Lab File: VU039153.D
 Acq: 26 Jun 2020 09:32

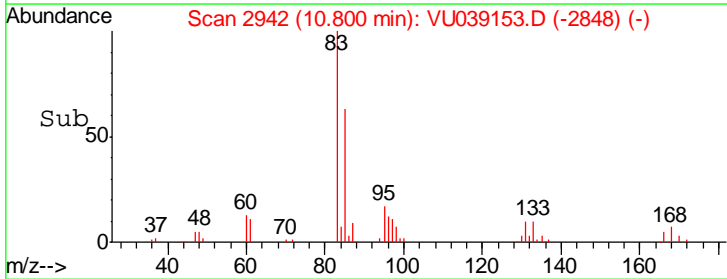
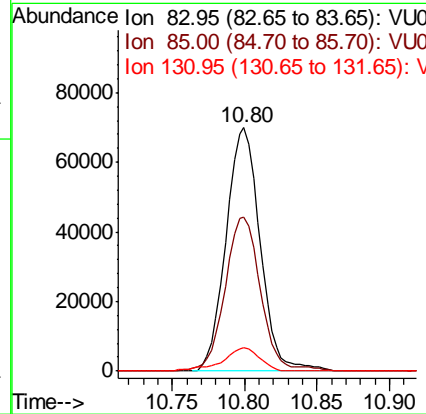
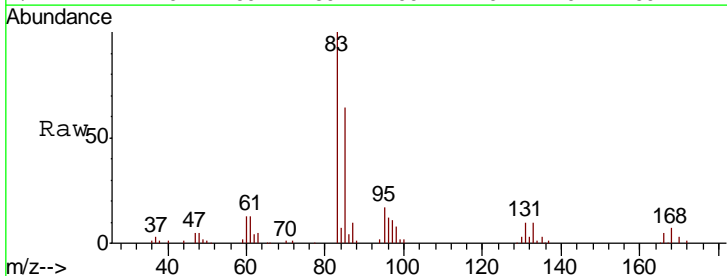
Instrument : MSVOA_U
 ClientSampleID : VSTD00519

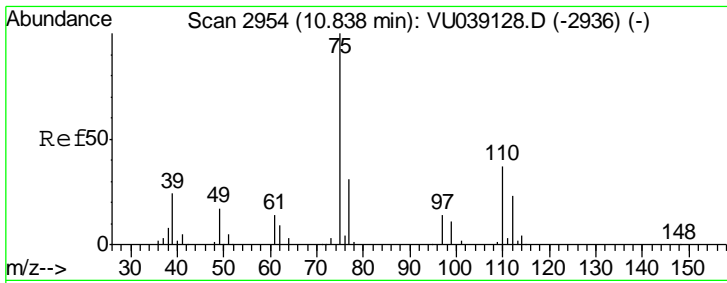
Tgt Ion	Resp	Lower	Upper
105	459576		
120	25.0	19.9	29.9
77	16.6	13.3	19.9



#58
 1,1,2,2-Tetrachloroethane
 Concen: 5.005 ug/L
 RT: 10.80 min Scan# 2942
 Delta R.T. 0.00 min
 Lab File: VU039153.D
 Acq: 26 Jun 2020 09:32

Tgt Ion	Resp	Lower	Upper
83	113938		
85	63.5	45.3	84.1
131	9.8	6.9	10.3

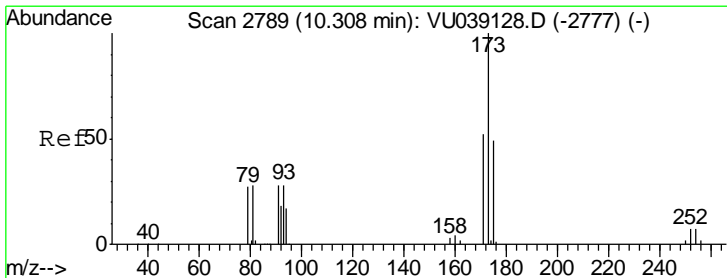
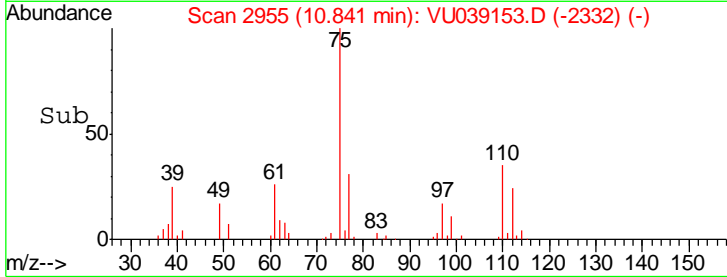
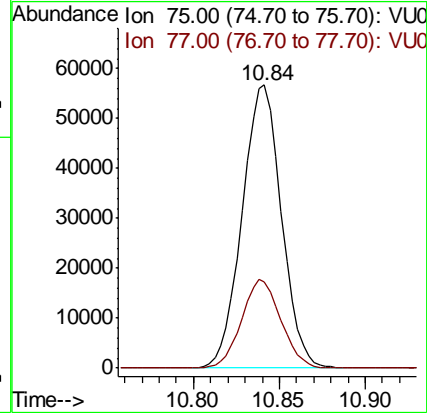
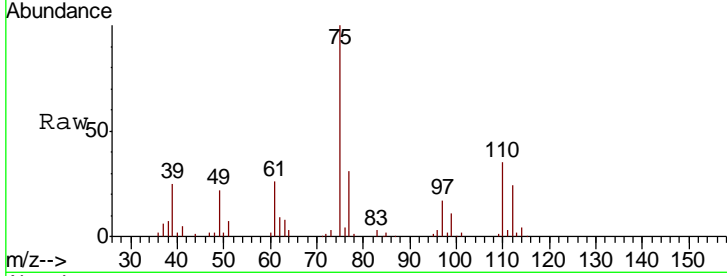




#59
 1,2,3-Trichloropropane
 Concen: 5.207 ug/L
 RT: 10.84 min Scan# 2955
 Delta R.T. 0.00 min
 Lab File: VU039153.D
 Acq: 26 Jun 2020 09:32

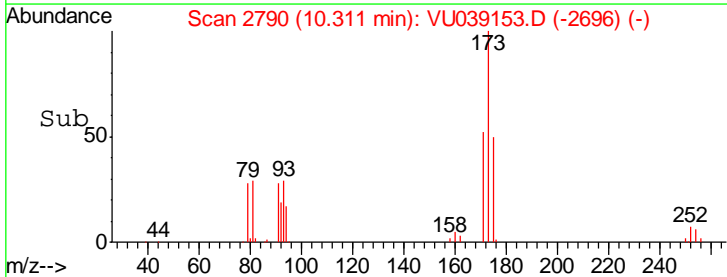
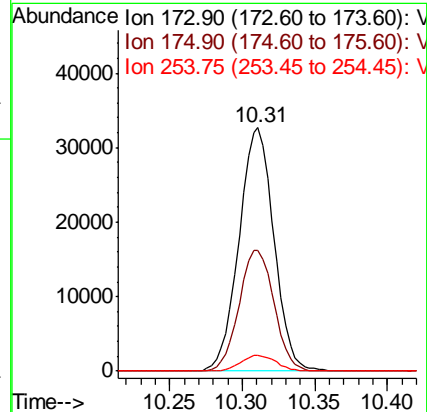
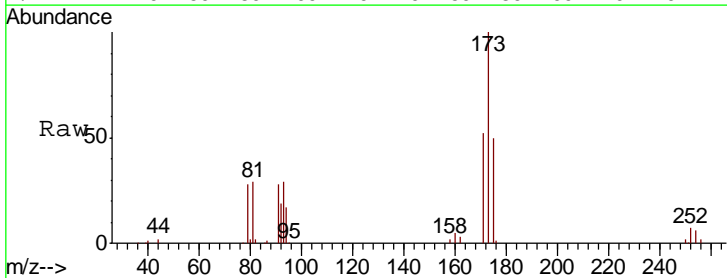
Instrument :
 MSVOA_U
 ClientSampled :
 VSTD00519

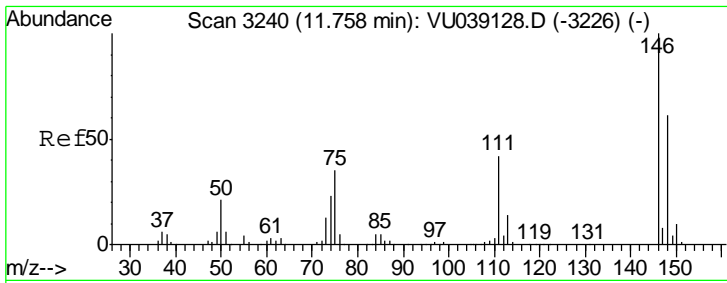
Tot Ion: 75 Resp: 89919
 Ion Ratio Lower Upper
 75 100
 77 31.4 26.2 39.2



#61
 Bromoform
 Concen: 4.906 ug/L
 RT: 10.31 min Scan# 2790
 Delta R.T. 0.00 min
 Lab File: VU039153.D
 Acq: 26 Jun 2020 09:32

Tgt Ion: 173 Resp: 54547
 Ion Ratio Lower Upper
 173 100
 175 49.8 39.3 58.9
 254 6.5 4.4 6.6

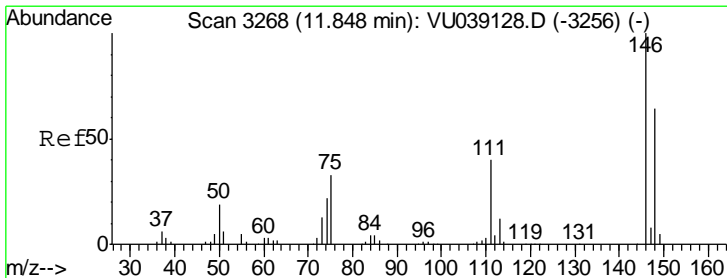
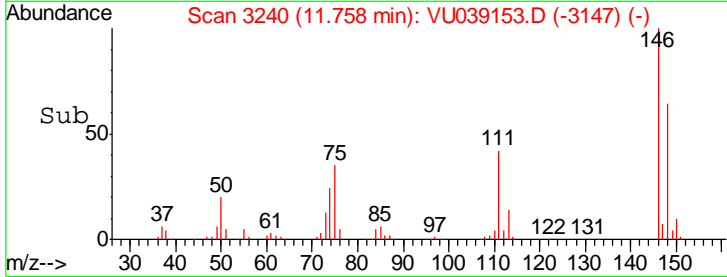
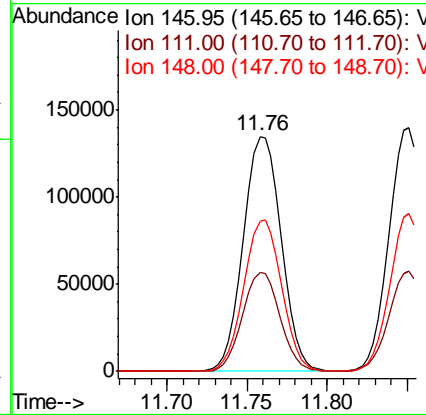
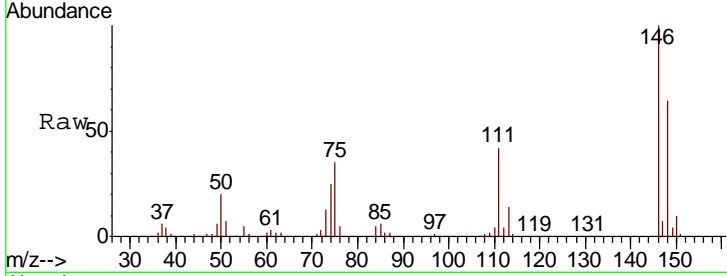




#62
 1,3-Dichlorobenzene
 Concen: 5.379 ug/L
 RT: 11.76 min Scan# 3240
 Delta R.T. 0.00 min
 Lab File: VU039153.D
 Acq: 26 Jun 2020 09:32

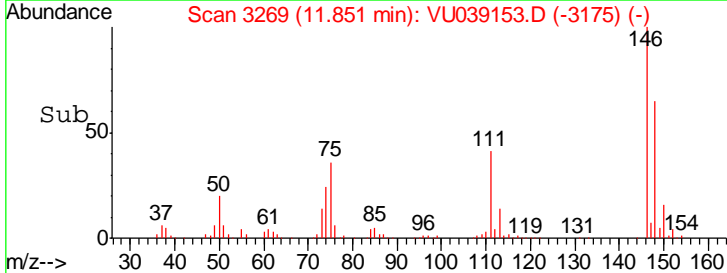
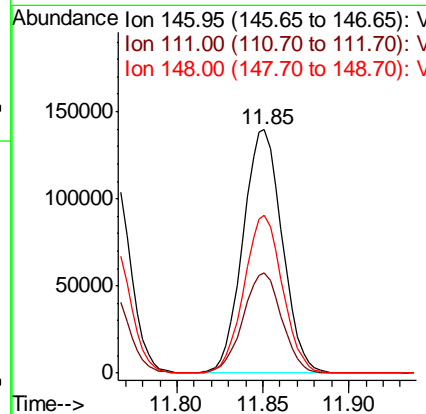
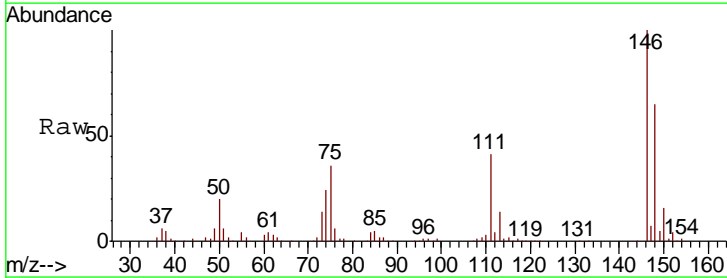
Instrument :
 MSVOA_U
 ClientSampled :
 VSTD00519

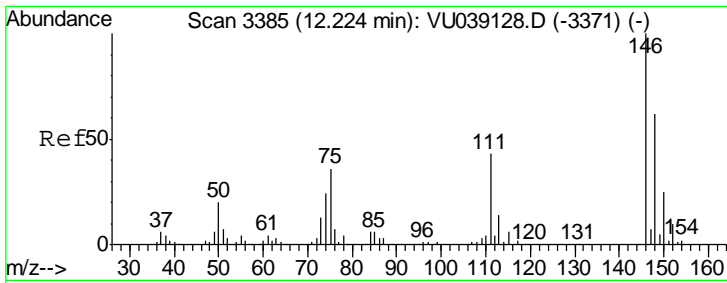
Tgt Ion	Resp	Lower	Upper
146	217683		
111	42.2	29.5	54.9
148	64.2	44.5	82.7



#63
 1,4-Dichlorobenzene
 Concen: 5.278 ug/L
 RT: 11.85 min Scan# 3269
 Delta R.T. 0.00 min
 Lab File: VU039153.D
 Acq: 26 Jun 2020 09:32

Tgt Ion	Resp	Lower	Upper
146	220007		
111	41.1	28.4	52.8
148	64.8	43.4	80.6

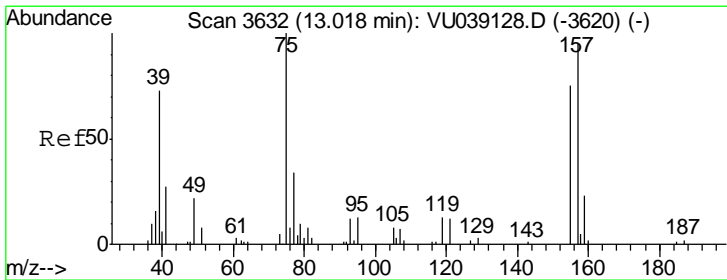
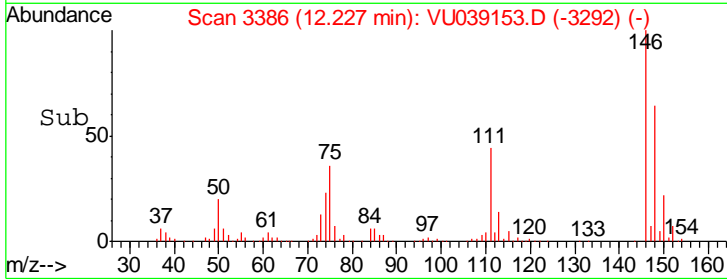
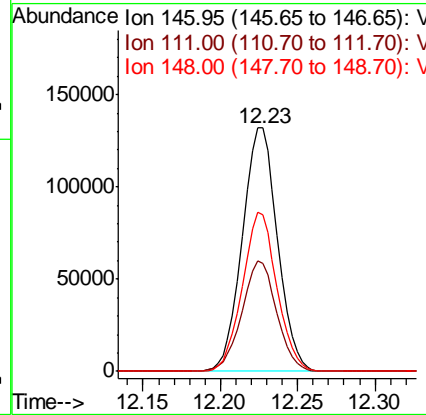
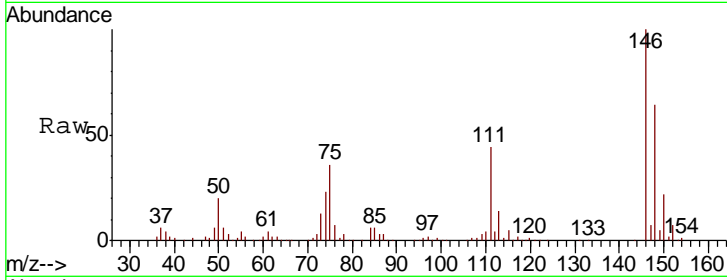




#65
 1,2-Dichlorobenzene
 Concen: 5.141 ug/L
 RT: 12.23 min Scan# 3386
 Delta R.T. 0.00 min
 Lab File: VU039153.D
 Acq: 26 Jun 2020 09:32

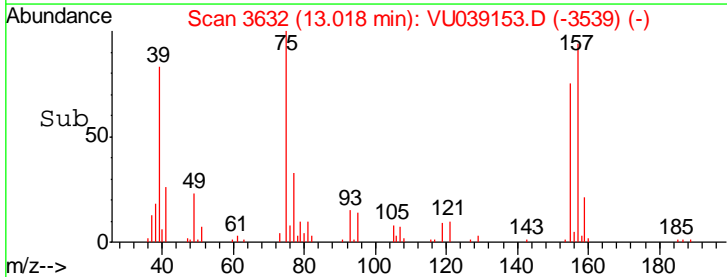
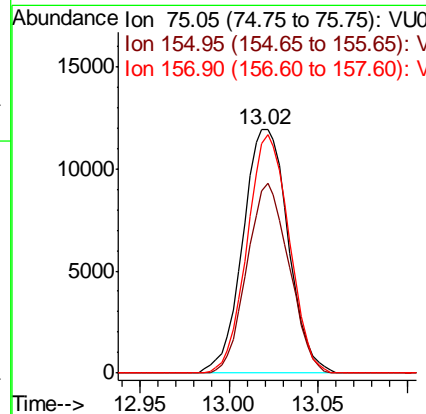
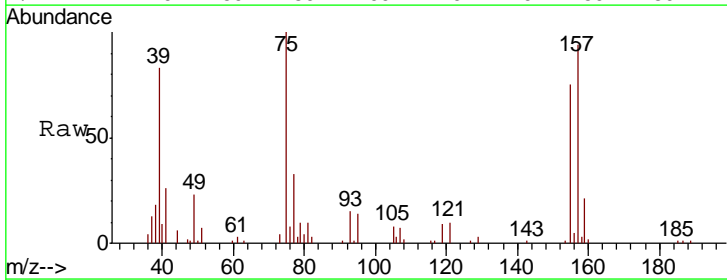
Instrument :
 MSVOA_U
 ClientSampled :
 VSTD00519

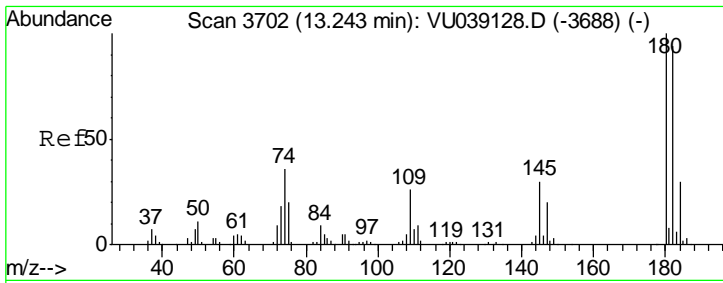
Tgt Ion	Resp	Lower	Upper
146	208619		
111	44.5	34.7	52.1
148	64.4	50.9	76.3



#66
 1,2-Dibromo-3-chloropropane
 Concen: 4.709 ug/L
 RT: 13.02 min Scan# 3632
 Delta R.T. 0.00 min
 Lab File: VU039153.D
 Acq: 26 Jun 2020 09:32

Tgt Ion	Resp	Lower	Upper
75	21079		
155	74.6	58.6	88.0
157	94.5	70.3	105.5

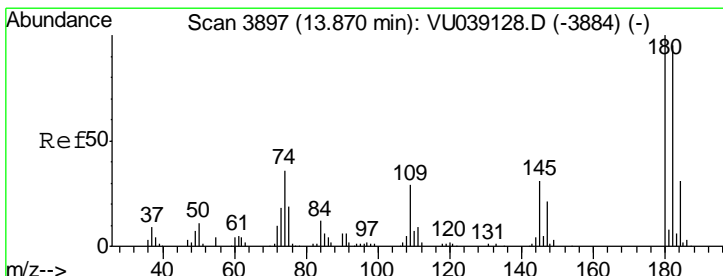
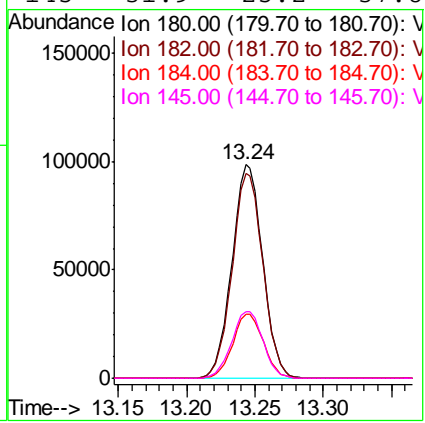
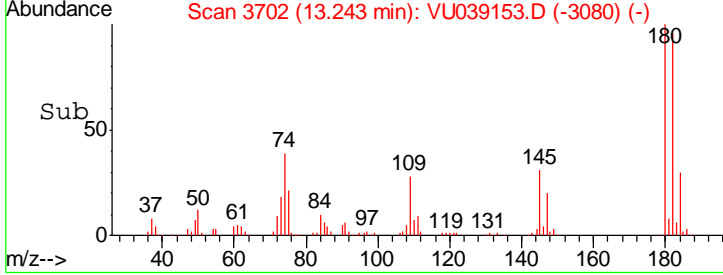
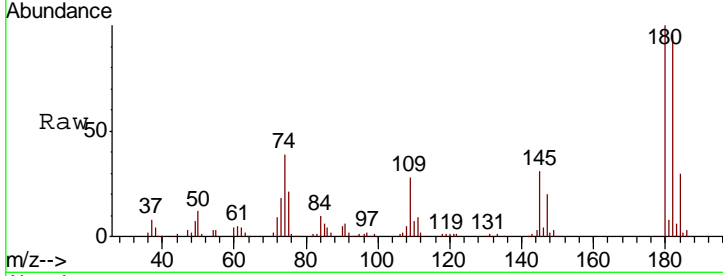




#67
 1,3,5-Trichlorobenzene
 Concen: 5.137 ug/L
 RT: 13.24 min Scan# 3702
 Delta R.T. 0.00 min
 Lab File: VU039153.D
 Acq: 26 Jun 2020 09:32

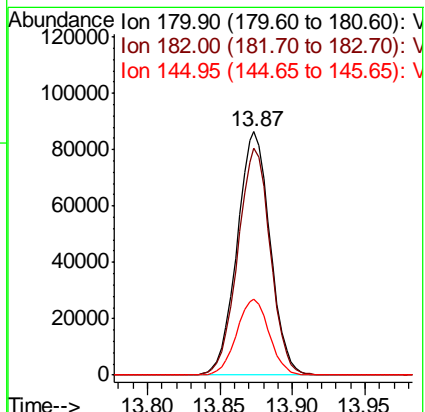
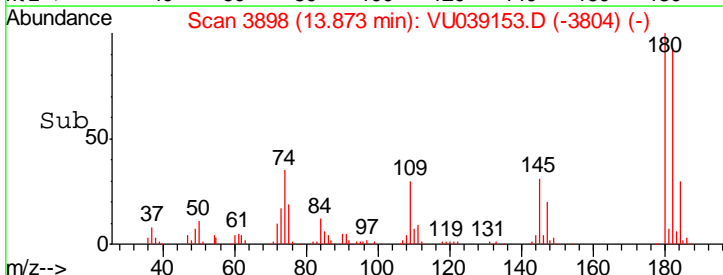
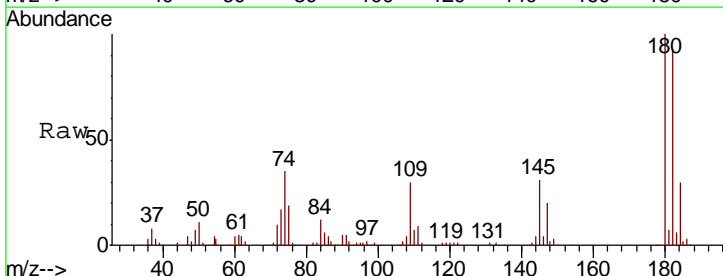
Instrument : MSVOA_U
 ClientSampleID : VSTD00519

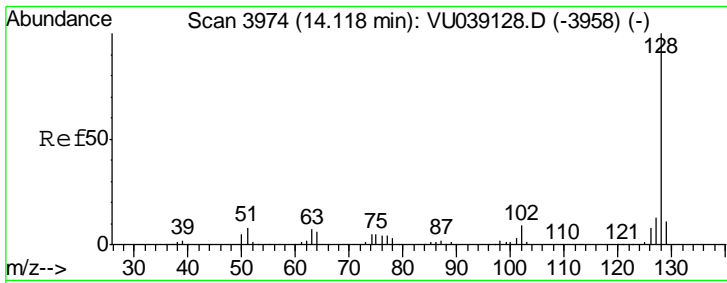
Tgt Ion	Resp	Lower	Upper
180	153875		
182	95.8	76.3	114.5
184	30.0	24.2	36.4
145	31.9	25.2	37.8



#68
 1,2,4-trichlorobenzene
 Concen: 4.992 ug/L
 RT: 13.87 min Scan# 3898
 Delta R.T. 0.00 min
 Lab File: VU039153.D
 Acq: 26 Jun 2020 09:32

Tgt Ion	Resp	Lower	Upper
180	136188		
182	92.3	77.0	115.6
145	30.9	25.4	38.2



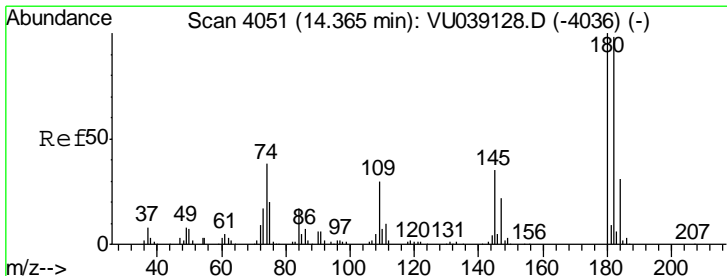
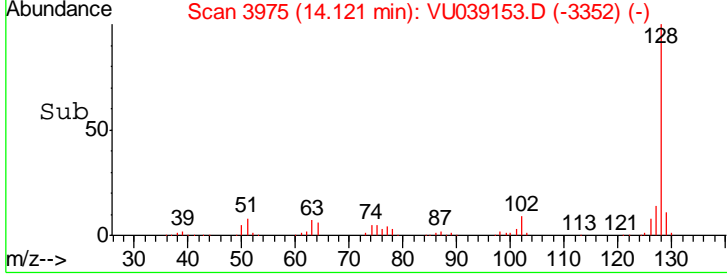
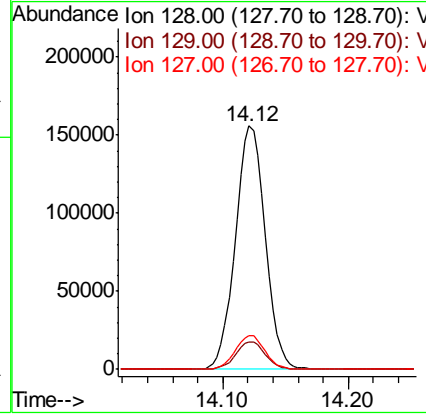
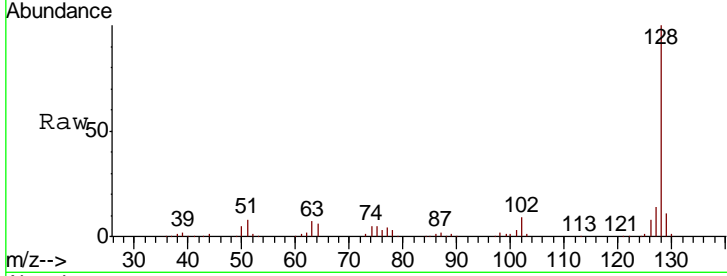


#69
 Naphthalene
 Concen: 4.419 ug/L
 RT: 14.12 min Scan# 3975
 Delta R.T. 0.00 min
 Lab File: VU039153.D
 Acq: 26 Jun 2020 09:32

Instrument :
 MSVOA_U
 ClientSampled :
 VSTD00519

Tgt Ion:128 Resp: 257201

Ion	Ratio	Lower	Upper
128	100		
129	11.1	8.9	13.3
127	13.7	10.8	16.2



#70
 1,2,3-Trichlorobenzene
 Concen: 4.951 ug/L
 RT: 14.37 min Scan# 4052
 Delta R.T. 0.00 min
 Lab File: VU039153.D
 Acq: 26 Jun 2020 09:32

Tgt Ion:180 Resp: 130373

Ion	Ratio	Lower	Upper
180	100		
182	92.7	75.8	113.6
145	34.8	27.6	41.4

