

Data Path : Z:\VOASRV\HPCHEM1\MSVOA U\DATA\VU062620\
 Data File : VU039155.D
 Acq On : 26 Jun 2020 11:03
 Operator : SY/MD
 Sample : L3110-02DL2 50X
 Misc : 25.0mL/MSVOA U/WATER
 ALS Vial : 1 Sample Multiplier: 1

Instrument :
 MSVOA_U
 ClientSampled :
 F9F12DL

Quant Time: Jun 26 23:54:32 2020
 Quant Method : Z:\VOASRV\HPCHEM1\MSVOA_U\METHOD\SOMUTR062320WMA.M
 Quant Title : TRACE VOA SOM01.0
 QLast Update : Fri Jun 26 23:52:58 2020
 Response via : Initial Calibration

Internal Standards	R.T.	QIon	Response	Conc	Units	Dev(Min)
1) 1,4-Difluorobenzene	6.28	114	338496	5.00	ug/L	0.00
28) Chlorobenzene-d5	9.44	117	323944	5.00	ug/L	0.00
60) 1,4-Dichlorobenzene-d4	11.83	152	144850	5.00	ug/L	0.00

System Monitoring Compounds

4) Vinyl Chloride-d3	1.61	65	45192	1.82	ug/L	0.00
Spiked Amount	5.000	Range	40 - 130	Recovery	=	36.40%#
7) Chloroethane-d5	1.93	69	45882	2.24	ug/L	0.00
Spiked Amount	5.000	Range	65 - 130	Recovery	=	44.80%#
11) 1,1-Dichloroethene-d2	2.59	63	69799	1.47	ug/L	0.00
Spiked Amount	5.000	Range	60 - 125	Recovery	=	29.40%#
20) 2-Butanone-d5	4.68	46	250691	28.02	ug/L	0.00
Spiked Amount	50.000	Range	40 - 130	Recovery	=	56.04%
24) Chloroform-d	5.10	84	114827	2.36	ug/L	0.00
Spiked Amount	5.000	Range	70 - 125	Recovery	=	47.20%#
26) 1,2-Dichloroethane-d4	5.74	65	73988	2.47	ug/L	0.00
Spiked Amount	5.000	Range	70 - 130	Recovery	=	49.40%#
32) Benzene-d6	5.76	84	206361	2.30	ug/L	0.00
Spiked Amount	5.000	Range	70 - 125	Recovery	=	46.00%#
36) 1,2-Dichloropropane-d6	6.72	67	72668	2.41	ug/L	0.00
Spiked Amount	5.000	Range	60 - 140	Recovery	=	48.20%#
41) Toluene-d8	7.92	98	157824	2.10	ug/L	0.00
Spiked Amount	5.000	Range	70 - 130	Recovery	=	42.00%#
43) trans-1,3-Dichloropropene-	8.20	79	29901	2.28	ug/L	0.00
Spiked Amount	5.000	Range	55 - 130	Recovery	=	45.60%#
46) 2-Hexanone-d5	8.66	63	169696	25.06	ug/L	0.00
Spiked Amount	50.000	Range	45 - 130	Recovery	=	50.12%
57) 1,1,2,2-Tetrachloroethane-	10.77	84	68536	2.44	ug/L	0.00
Spiked Amount	5.000	Range	65 - 120	Recovery	=	48.80%#
64) 1,2-Dichlorobenzene-d4	12.21	152	68986	2.56	ug/L	0.00
Spiked Amount	5.000	Range	80 - 120	Recovery	=	51.20%#

Target Compounds

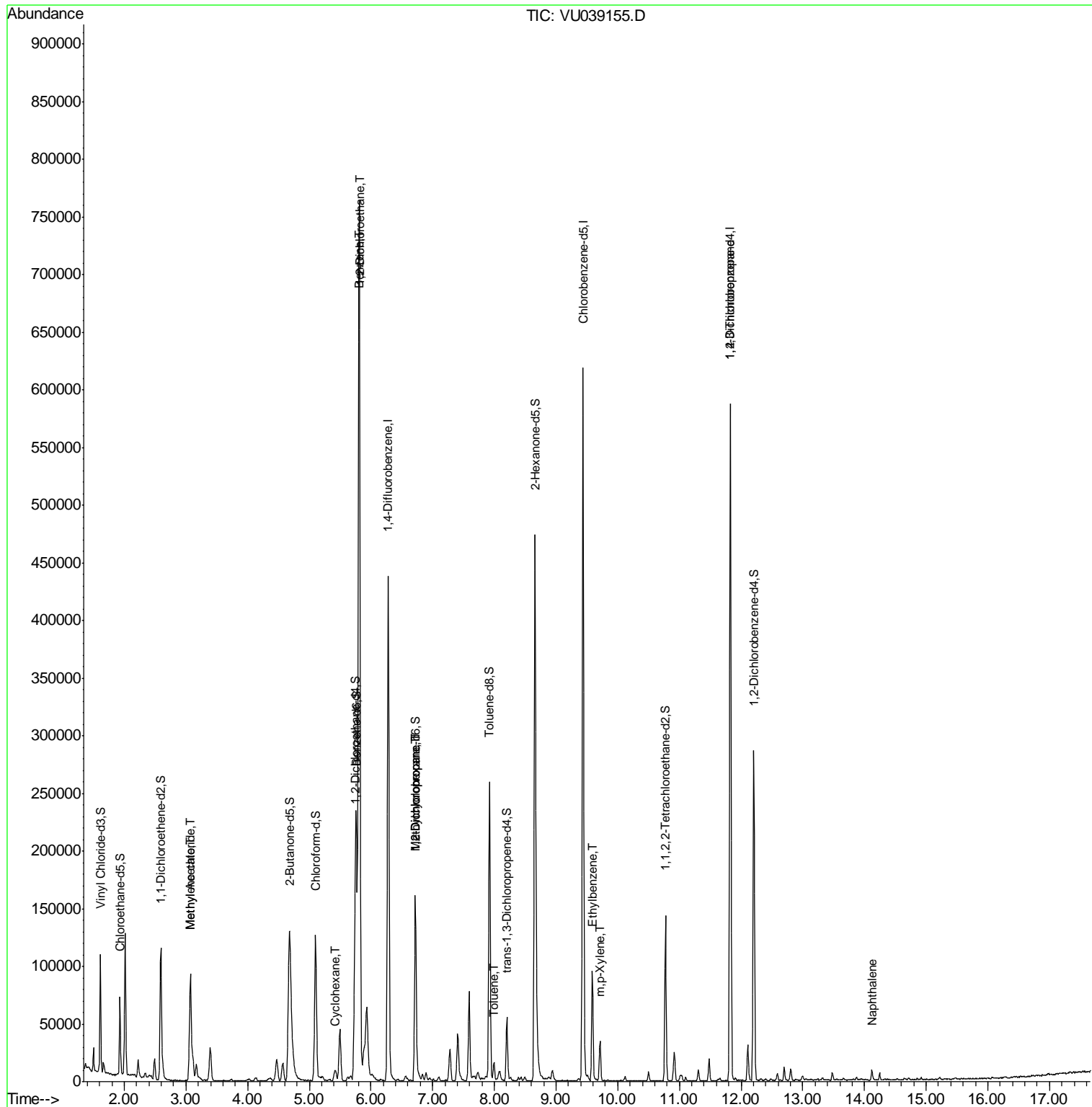
Target Compounds	R.T.	QIon	Response	Conc	Units	Ovalue
15) Methyl Acetate	3.07	43	65149	4.517	ug/L #	55
16) Methylene chloride	3.07	84	4184	0.145	ug/L #	66
27) 1,2-Dichloroethane	5.83	62	25964	0.727	ug/L	97
30) Cyclohexane	5.42	56	4796	0.128	ug/L #	87
33) Benzene	5.81	78	696652	6.845	ug/L	100
35) Methylcyclohexane	6.72	83	17950	0.491	ug/L #	17
37) 1,2-Dichloropropane	6.72	63	8715	0.316	ug/L #	89
42) Toluene	8.00	91	10942	0.108	ug/L	94
52) Ethylbenzene	9.59	91	63117	0.594	ug/L	97
53) m,p-Xylene	9.71	106	9642	0.247	ug/L	92
59) 1,2,3-Trichloropropane	11.83	75	21219	1.021	ug/L	93
69) Naphthalene	14.12	128	6818	0.110	ug/L #	92

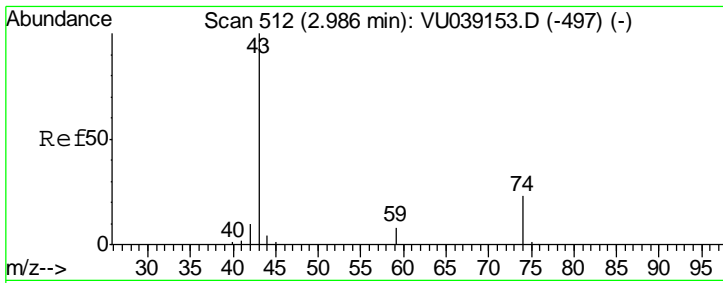
(#) = qualifier out of range (m) = manual integration (+) = signals summed

Data Path : Z:\VOASRV\HPCHEM1\MSVOA U\DATA\VU062620\
 Data File : VU039155.D
 Acq On : 26 Jun 2020 11:03
 Operator : SY/MD
 Sample : L3110-02DL2 50X
 Misc : 25.0mL/MSVOA U/WATER
 ALS Vial : 1 Sample Multiplier: 1

Instrument :
 MSVOA_U
 ClientSampled :
 F9F12DL

Quant Time: Jun 26 23:54:32 2020
 Quant Method : Z:\VOASRV\HPCHEM1\MSVOA_U\METHOD\SOMUTR062320WMA.M
 Quant Title : TRACE VOA SOM01.0
 QLast Update : Fri Jun 26 23:52:58 2020
 Response via : Initial Calibration

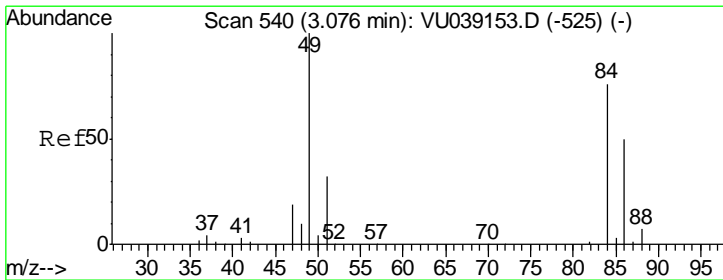
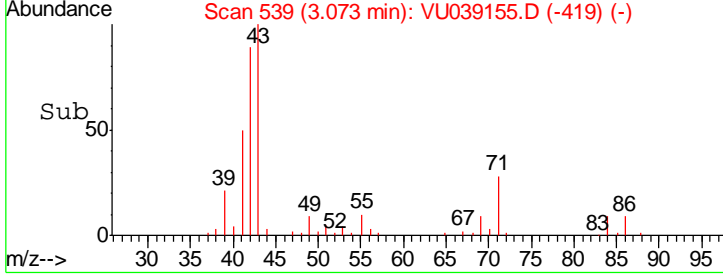
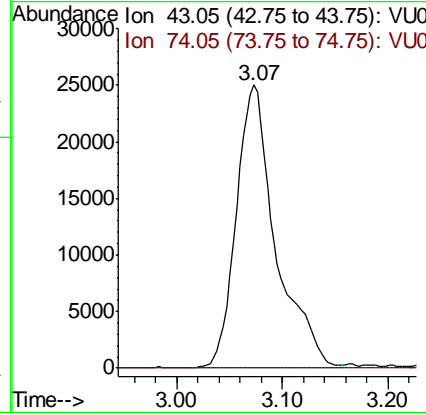
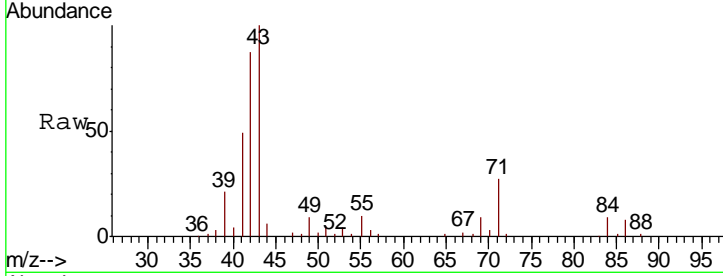




#15
 Methyl Acetate
 Concen: 4.517 ug/L
 RT: 3.07 min Scan# 539
 Delta R.T. 0.09 min
 Lab File: VU039155.D
 Acq: 26 Jun 2020 11:03

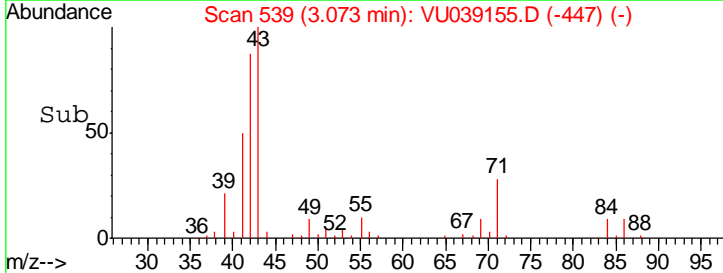
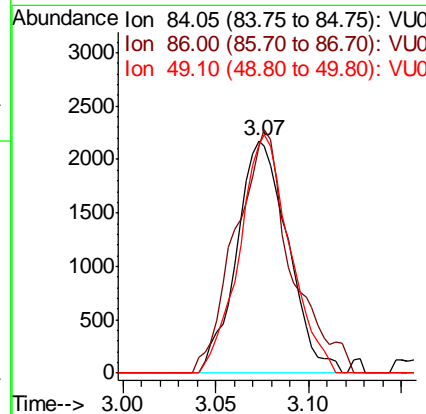
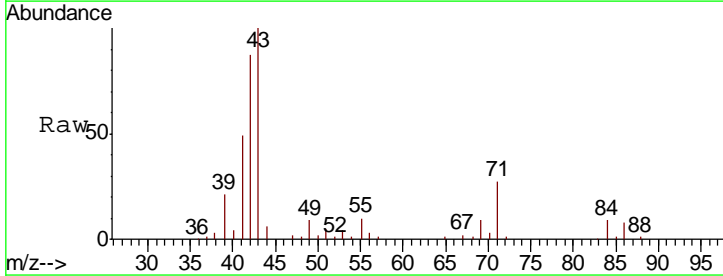
Instrument :
 MSVOA_U
ClientSampled :
 F9F12DL

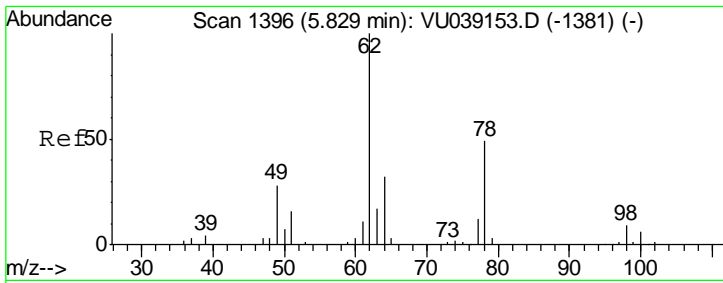
Tgt Ion	Resp	Lower	Upper
43	100		
74	0.0	17.0	25.4#



#16
 Methylene chloride
 Concen: 0.145 ug/L
 RT: 3.07 min Scan# 539
 Delta R.T. -0.00 min
 Lab File: VU039155.D
 Acq: 26 Jun 2020 11:03

Tgt Ion	Resp	Lower	Upper
84	100		
86	97.4	44.1	81.9#
49	98.4	93.1	172.9

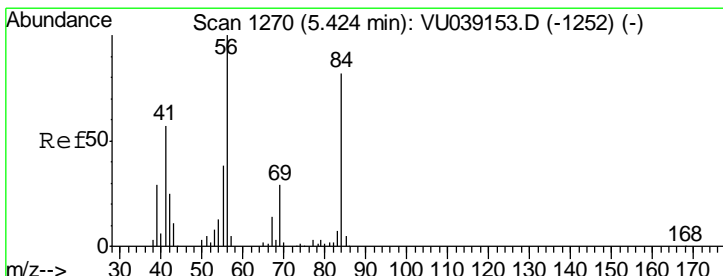
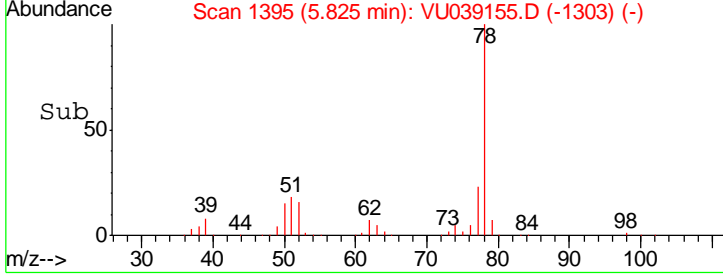
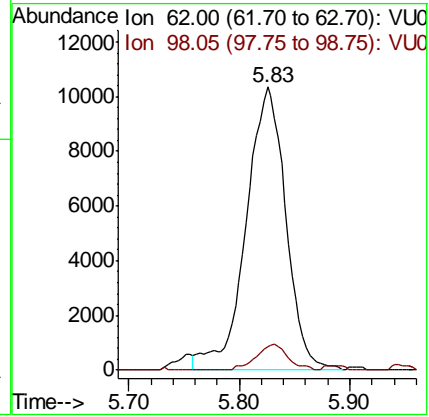
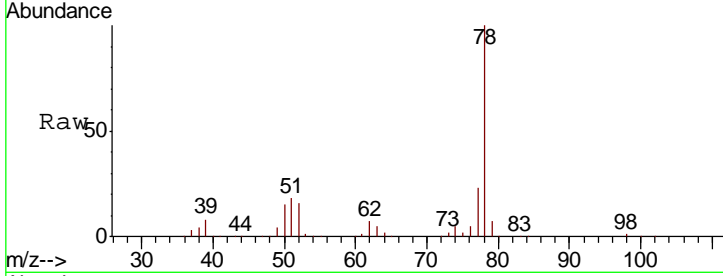




#27
 1,2-Dichloroethane
 Concen: 0.727 ug/L
 RT: 5.83 min Scan# 1395
 Delta R.T. -0.00 min
 Lab File: VU039155.D
 Acq: 26 Jun 2020 11:03

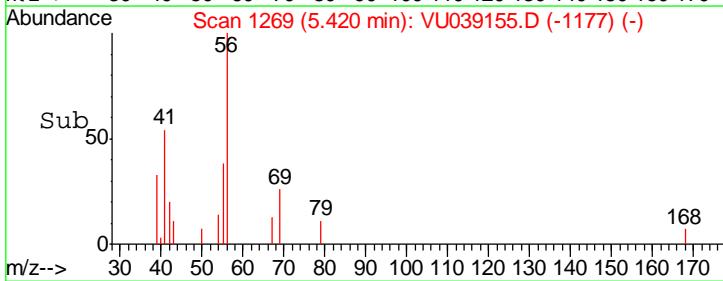
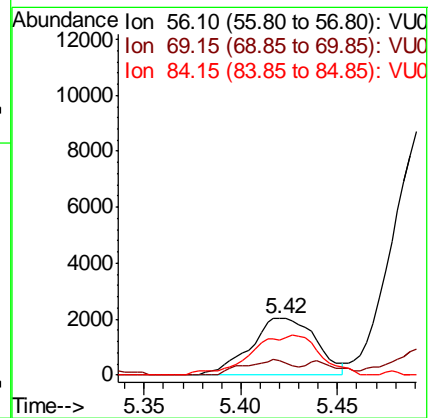
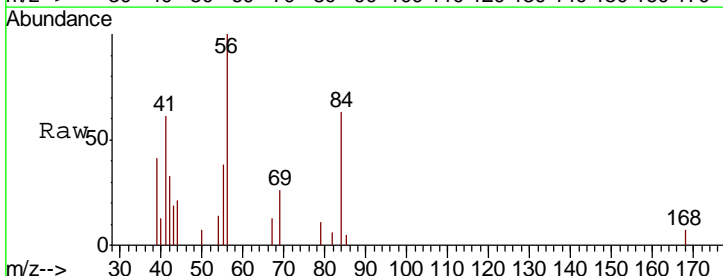
Instrument : MSVOA_U
 ClientSampled : F9F12DL

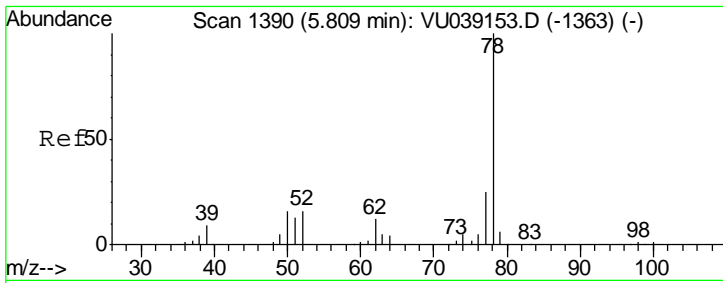
Tgt Ion	Resp	Lower	Upper
62	100		
98	8.4	7.7	11.5



#30
 Cyclohexane
 Concen: 0.128 ug/L
 RT: 5.42 min Scan# 1269
 Delta R.T. -0.00 min
 Lab File: VU039155.D
 Acq: 26 Jun 2020 11:03

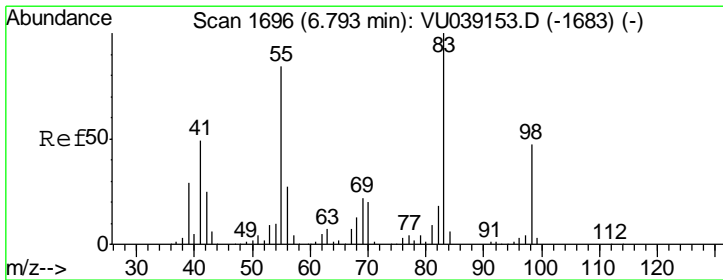
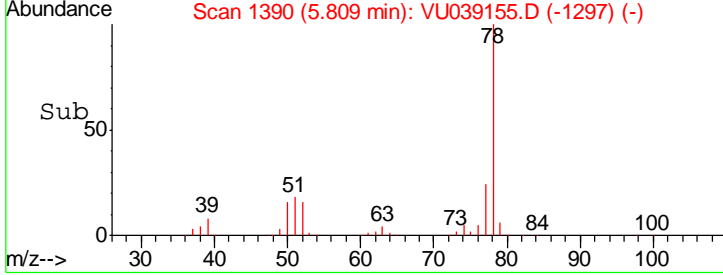
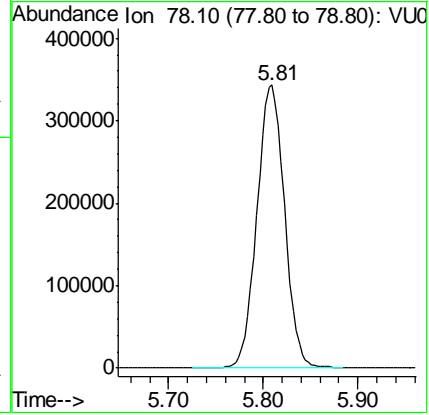
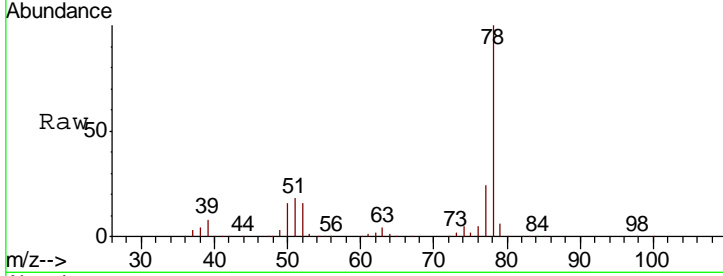
Tgt Ion	Resp	Lower	Upper
56	100		
69	19.6	23.3	34.9#
84	74.0	67.1	100.7





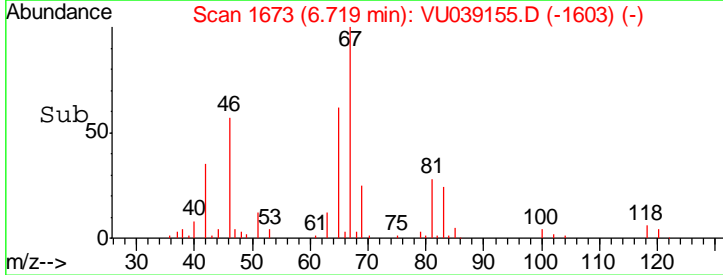
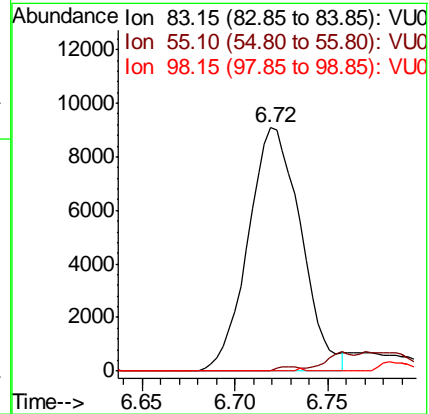
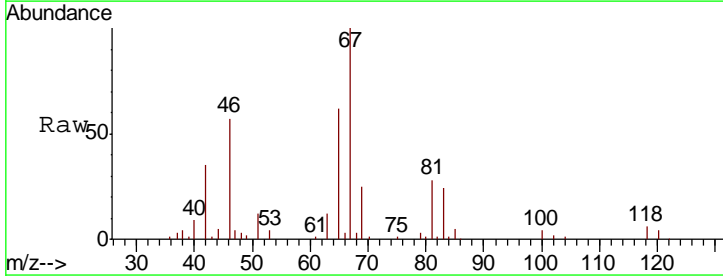
#33
 Benzene
 Concen: 6.845 ug/L
 RT: 5.81 min Scan# 1390
 Delta R.T. -0.00 min
 Lab File: VU039155.D
 Acq: 26 Jun 2020 11:03
 Tgt Ion: 78 Resp: 696652

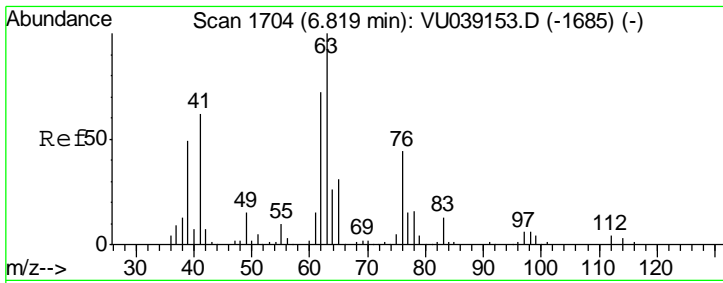
Instrument : MSVOA_U
 ClientSampled : F9F12DL



#35
 Methylcyclohexane
 Concen: 0.491 ug/L
 RT: 6.72 min Scan# 1673
 Delta R.T. -0.07 min
 Lab File: VU039155.D
 Acq: 26 Jun 2020 11:03

Tgt Ion	Ratio	Lower	Upper
83	100		
55	0.7	65.5	98.3#
98	0.0	36.5	54.7#

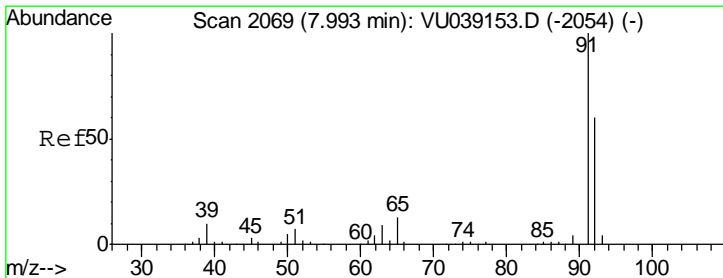
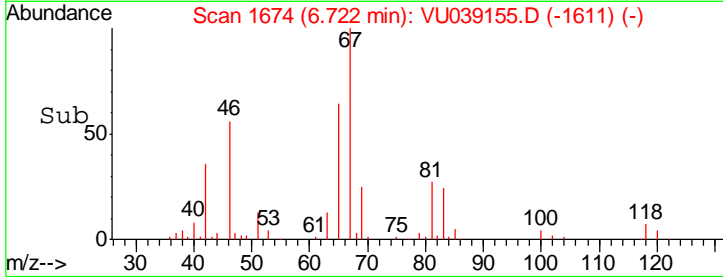
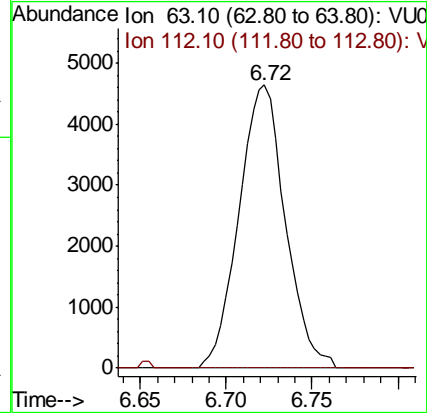
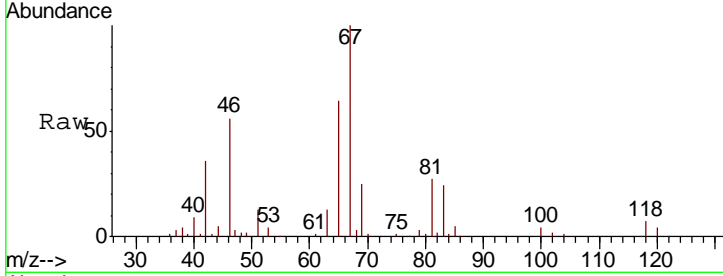




#37
 1,2-Dichloropropane
 Concen: 0.316 ug/L
 RT: 6.72 min Scan# 1674
 Delta R.T. -0.10 min
 Lab File: VU039155.D
 Acq: 26 Jun 2020 11:03

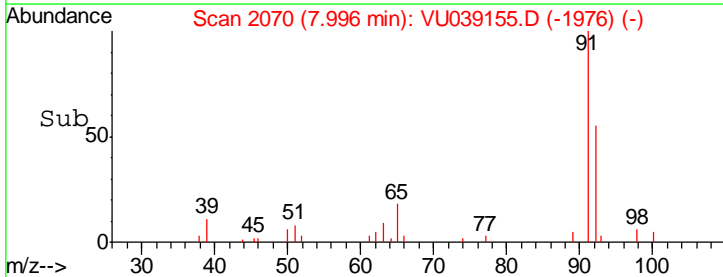
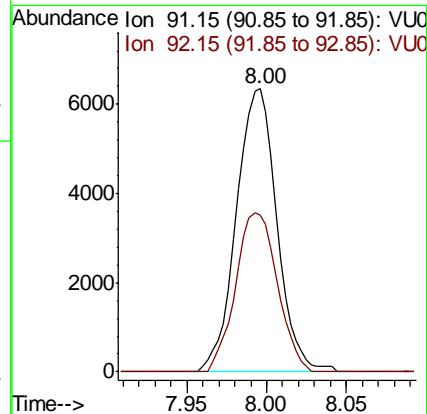
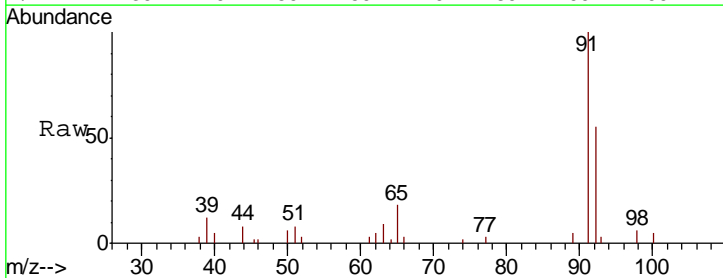
Instrument :
 MSVOA_U
 ClientSampled :
 F9F12DL

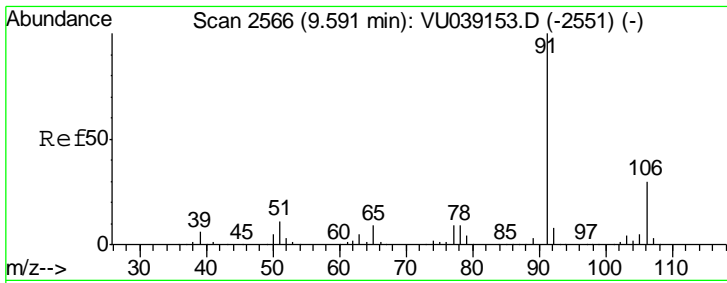
Tgt Ion: 63 Resp: 8715
 Ion Ratio Lower Upper
 63 100
 112 0.5 3.4 5.2#



#42
 Toluene
 Concen: 0.108 ug/L
 RT: 8.00 min Scan# 2070
 Delta R.T. 0.00 min
 Lab File: VU039155.D
 Acq: 26 Jun 2020 11:03

Tgt Ion: 91 Resp: 10942
 Ion Ratio Lower Upper
 91 100
 92 55.4 42.1 78.1

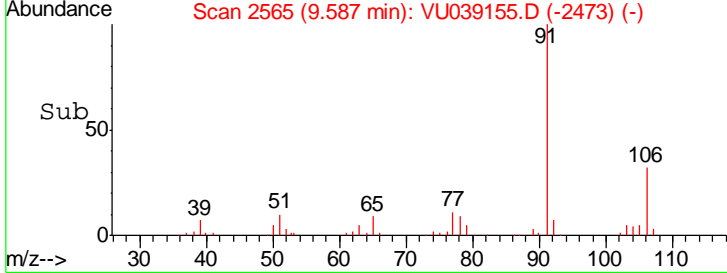
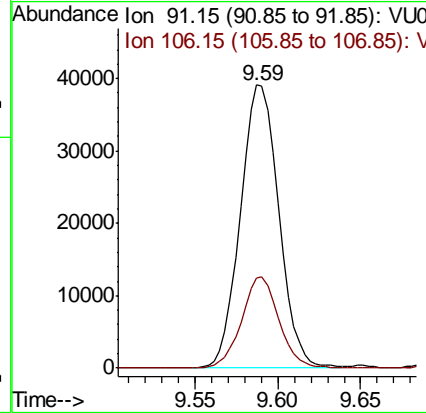
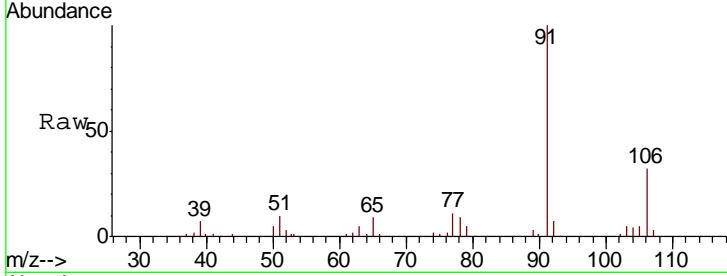




#52
 Ethylbenzene
 Concen: 0.594 ug/L
 RT: 9.59 min Scan# 2565
 Delta R.T. -0.00 min
 Lab File: VU039155.D
 Acq: 26 Jun 2020 11:03

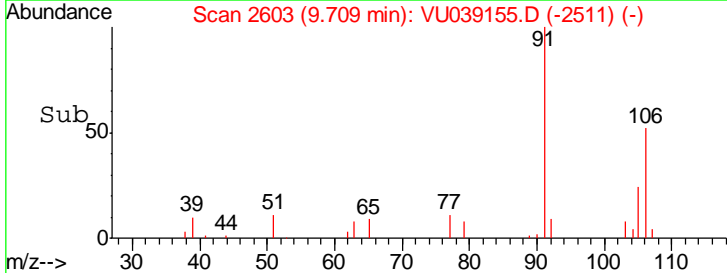
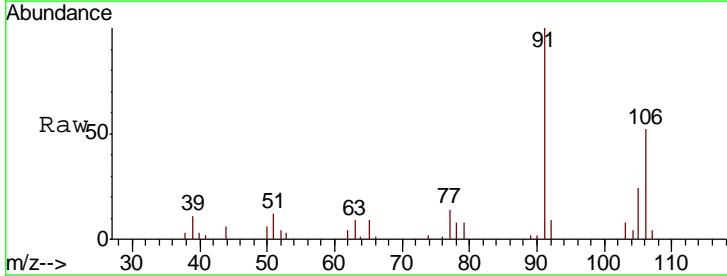
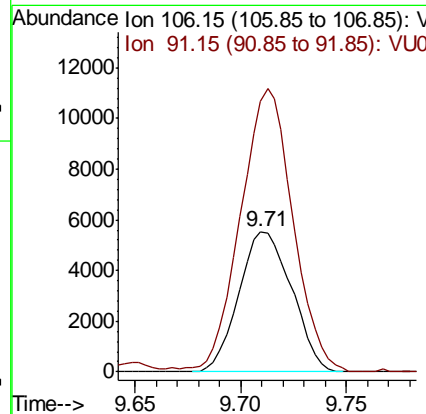
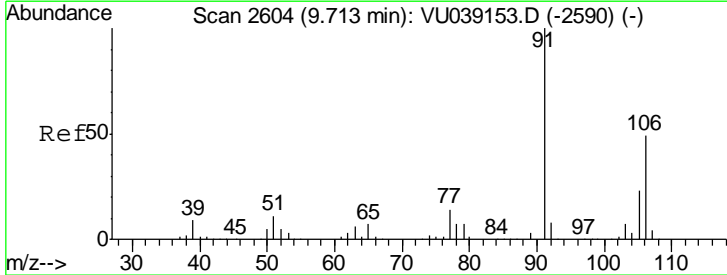
Instrument : MSVOA_U
 ClientSampled : F9F12DL

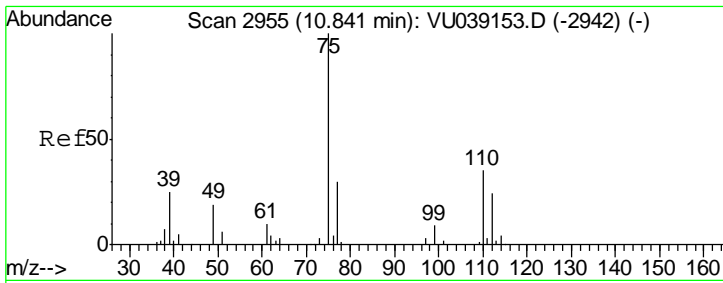
Tgt Ion: 91 Resp: 63117
 Ion Ratio Lower Upper
 91 100
 106 31.9 21.3 39.6



#53
 m,p-Xylene
 Concen: 0.247 ug/L
 RT: 9.71 min Scan# 2603
 Delta R.T. -0.00 min
 Lab File: VU039155.D
 Acq: 26 Jun 2020 11:03

Tgt Ion: 106 Resp: 9642
 Ion Ratio Lower Upper
 106 100
 91 193.0 143.6 266.8

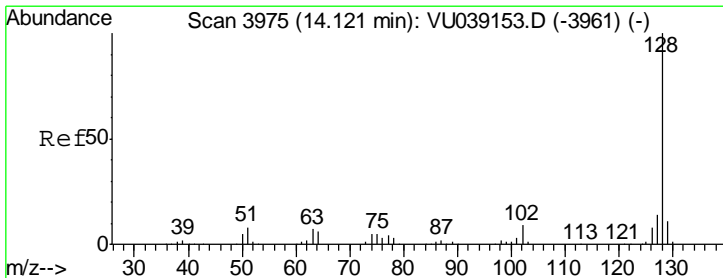
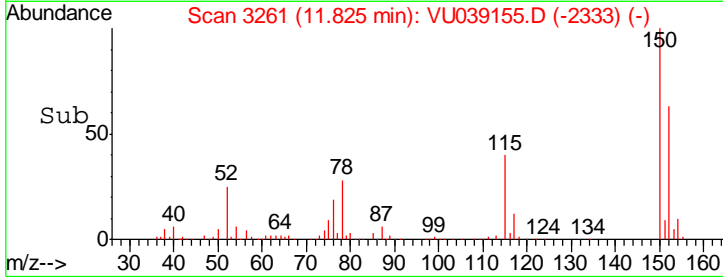
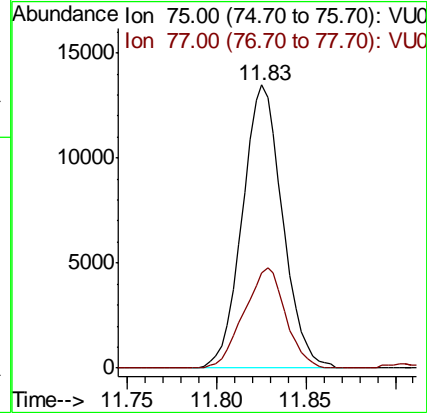
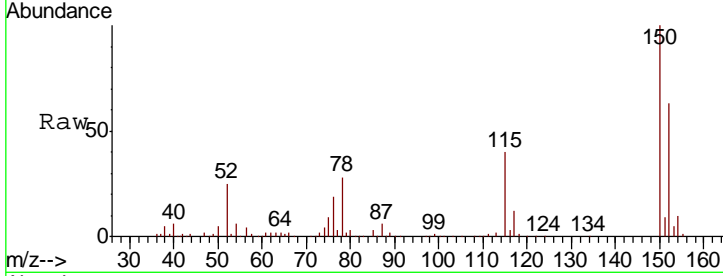




#59
 1,2,3-Trichloropropane
 Concen: 1.021 ug/L
 RT: 11.83 min Scan# 3261
 Delta R.T. 0.98 min
 Lab File: VU039155.D
 Acq: 26 Jun 2020 11:03

Instrument :
 MSVOA_U
 ClientSampled :
 F9F12DL

Tgt Ion: 75 Resp: 21219
 Ion Ratio Lower Upper
 75 100
 77 36.6 26.2 39.2



#69
 Naphthalene
 Concen: 0.110 ug/L
 RT: 14.12 min Scan# 3975
 Delta R.T. -0.00 min
 Lab File: VU039155.D
 Acq: 26 Jun 2020 11:03

Tgt Ion: 128 Resp: 6818
 Ion Ratio Lower Upper
 128 100
 129 9.8 8.9 13.3
 127 9.0 10.8 16.2#

