

Data Path : Z:\VOASRV\HPCHEM1\MSVOA_U\DATA\VU062718\
 Data File : VU024962.D
 Acq On : 27 Jun 2018 13:26
 Operator : MD/SY
 Sample : J3669-18MEDL 5X
 Misc : 6.19g/5.0mL/100uL/5.00ML/MSVOA_U/MEOH
 ALS Vial : 9 Sample Multiplier: 1

Instrument :
 MSVOA_U
 ClientSampleId :
 WP021SB475-25-27-180620MEDL

Quant Time: Jun 28 02:24:59 2018
 Quant Method : Z:\VOASRV\HPCHEM1\MSVOA_U\METHOD\82U061318W.M
 Quant Title : SW846 8260
 QLast Update : Wed Jun 13 13:55:26 2018
 Response via : Initial Calibration

Internal Standards	R.T.	QIon	Response	Conc	Units	Dev(Min)
1) Pentafluorobenzene	4.99	168	235698	50.00	ug/l	0.00
34) 1,4-Difluorobenzene	5.89	114	355929	50.00	ug/l	0.00
63) Chlorobenzene-d5	9.09	117	325509	50.00	ug/l	0.00
72) 1,4-Dichlorobenzene-d4	11.49	152	182981	50.00	ug/l	0.00

System Monitoring Compounds

33) 1,2-Dichloroethane-d4	5.31	65	176926	45.98	ug/l	0.00
Spiked Amount	50.000		Recovery	=	91.96%	
35) Dibromofluoromethane	4.89	113	137714	46.62	ug/l	0.00
Spiked Amount	50.000		Recovery	=	93.24%	
50) Toluene-d8	7.57	98	505474	46.91	ug/l	0.00
Spiked Amount	50.000		Recovery	=	93.82%	
62) 4-Bromofluorobenzene	10.31	95	194056	45.36	ug/l	0.00
Spiked Amount	50.000		Recovery	=	90.72%	

Target Compounds

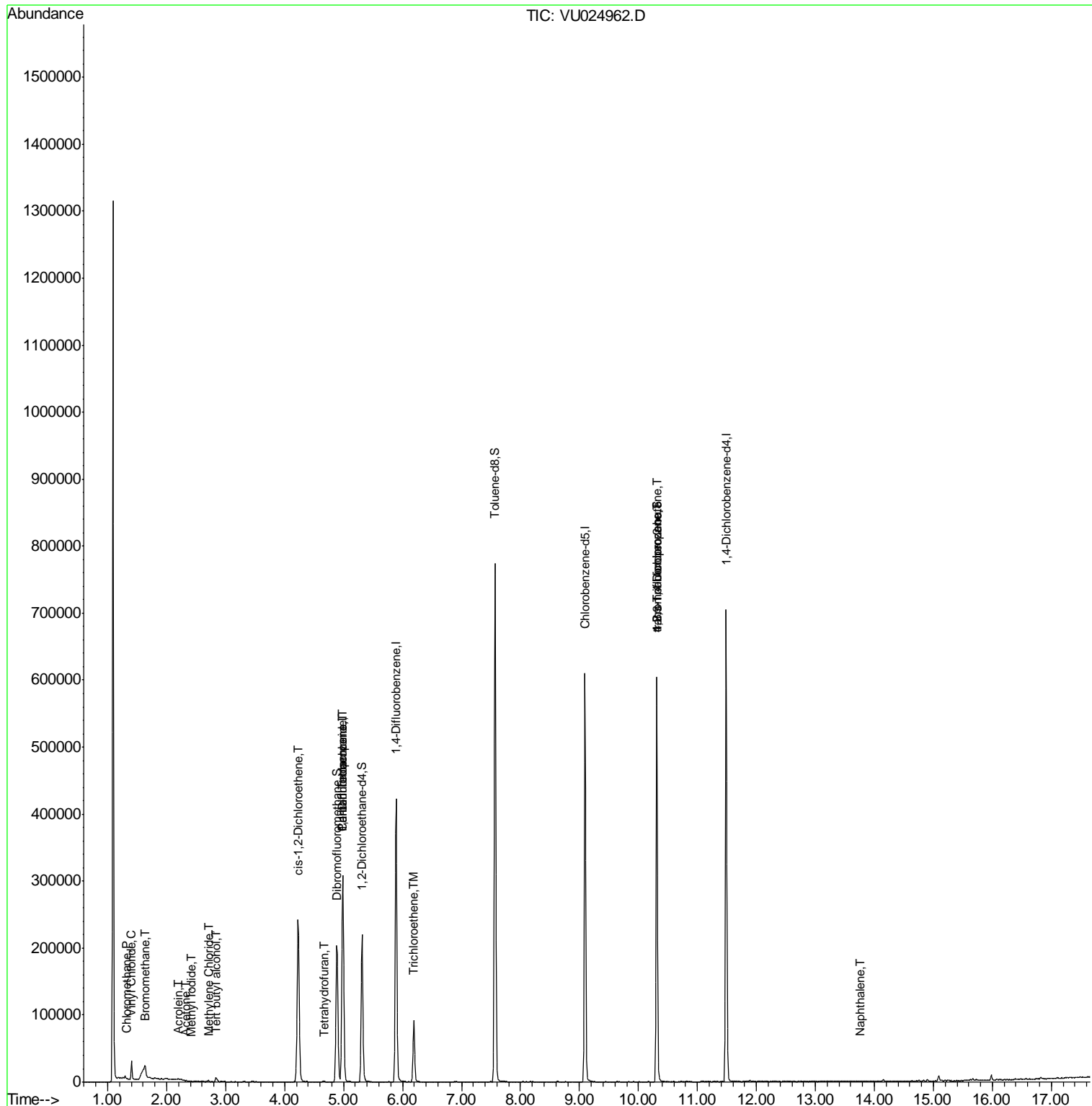
					Qvalue
3) Chloromethane	1.33	50	856	0.284	ug/l 91
4) Vinyl Chloride	1.40	62	15990	5.144	ug/l 99
5) Bromomethane	1.62	94	736	0.490	ug/l 88
6) Chloroethane	1.69	64	148	Below Cal	# 43
10) Methyl Iodide	2.41	142	454	5.452	ug/l # 85
11) Tert butyl alcohol	2.84	59	3151	3.367	ug/l # 72
13) Acrolein	2.19	56	231	0.470	ug/l # 1
16) Acetone	2.33	43	766	0.371	ug/l # 85
20) Methylene Chloride	2.70	84	733	0.226	ug/l # 83
27) cis-1,2-Dichloroethene	4.23	96	137198	40.373	ug/l 87
29) Tetrahydrofuran	4.67	42	594	0.345	ug/l # 53
31) Cyclohexane	4.99	56	4379	Below Cal	# 1
36) 1,1-Dichloropropene	4.99	75	17516	4.188	ug/l # 50
38) Carbon Tetrachloride	4.99	117	22384	4.867	ug/l # 16
44) Trichloroethene	6.19	130	32717	9.646	ug/l 95
76) 1,2,3-Trichloropropane	10.31	75	99078	24.594	ug/l # 35
81) trans-1,4-Dichloro-2-buten	10.31	75	99078	56.920	ug/l # 100
95) Naphthalene	13.77	128	1384	0.781	ug/l # 69

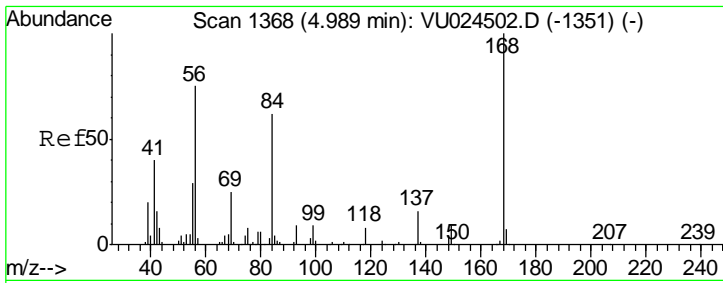
(#) = qualifier out of range (m) = manual integration (+) = signals summed

Data Path : Z:\VOASRV\HPCHEM1\MSVOA_U\DATA\VU062718\
 Data File : VU024962.D
 Acq On : 27 Jun 2018 13:26
 Operator : MD/SY
 Sample : J3669-18MEDL 5X
 Misc : 6.19g/5.0mL/100uL/5.00ML/MSVOA_U/MEOH
 ALS Vial : 9 Sample Multiplier: 1

Instrument :
 MSVOA_U
 Client Sampled :
 WP021SB475-25-27-180620MEDL

Quant Time: Jun 28 02:24:59 2018
 Quant Method : Z:\VOASRV\HPCHEM1\MSVOA_U\METHOD\82U061318W.M
 Quant Title : SW846 8260
 QLast Update : Wed Jun 13 13:55:26 2018
 Response via : Initial Calibration

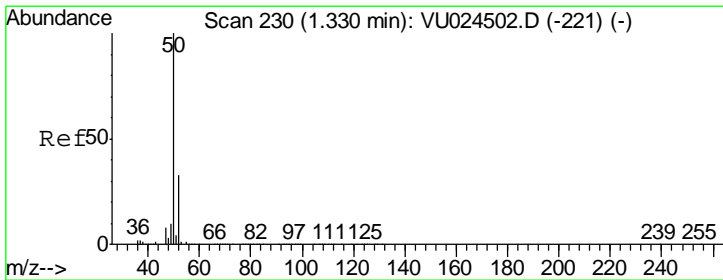
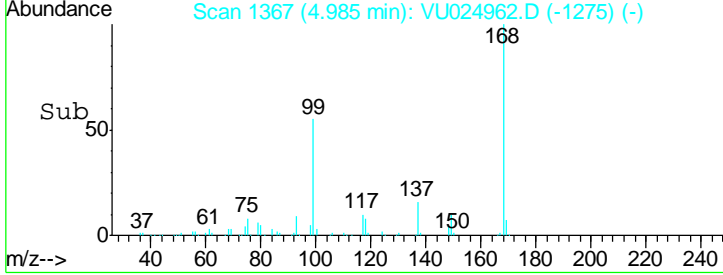
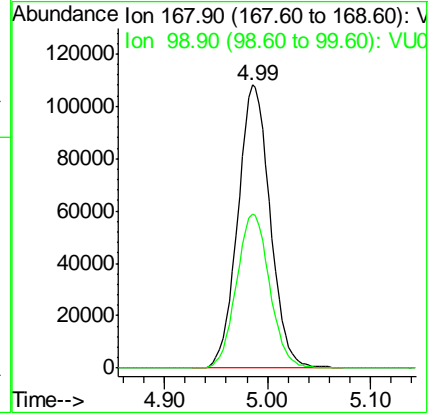
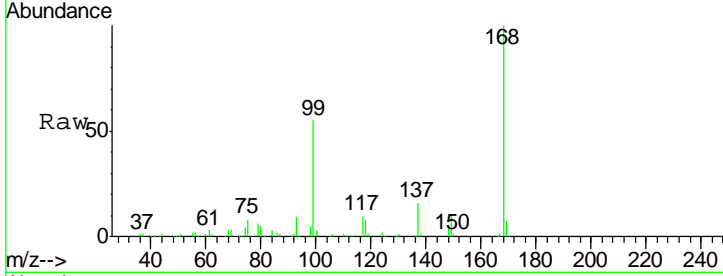




#1
 Pentafluorobenzene
 Concen: 50.000 ug/l
 RT: 4.99 min Scan# 1367
 Delta R.T. -0.00 min
 Lab File: VU024962.D
 Acq: 27 Jun 2018 13:26

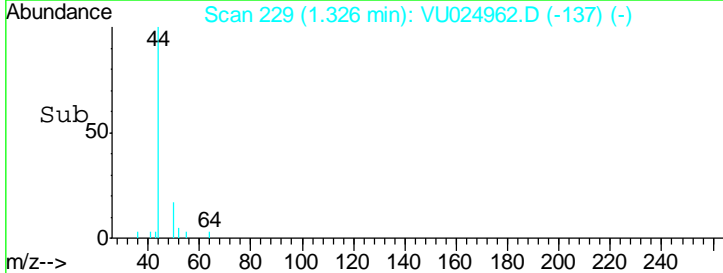
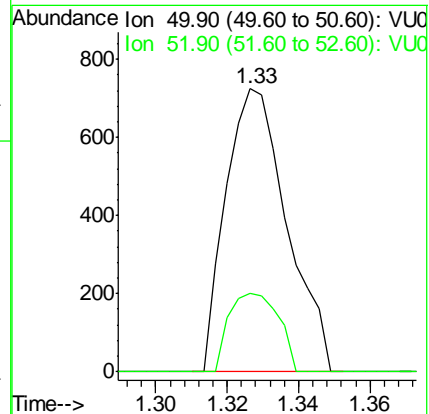
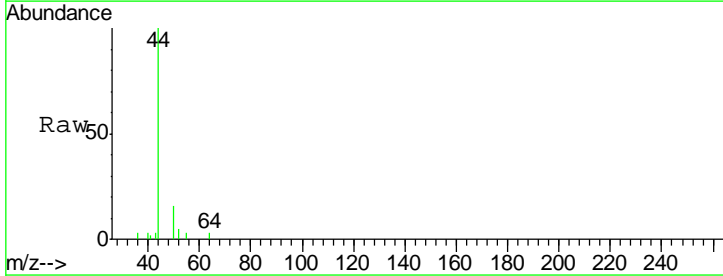
Instrument : MSVOA_U
 ClientSampled : WP021SB475-25-27-180620MEDL

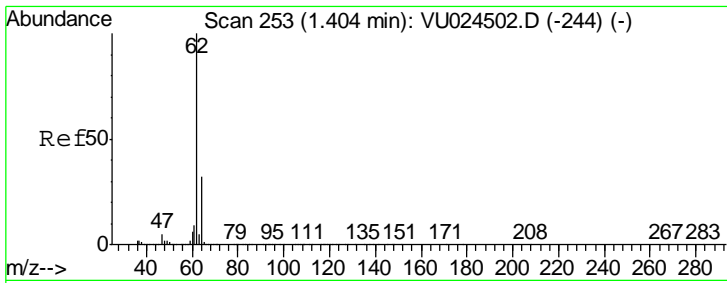
Tgt Ion: 168 Resp: 235698
 Ion Ratio Lower Upper
 168 100
 99 54.6 43.2 64.8



#3
 Chloromethane
 Concen: 0.284 ug/l
 RT: 1.33 min Scan# 229
 Delta R.T. -0.00 min
 Lab File: VU024962.D
 Acq: 27 Jun 2018 13:26

Tgt Ion: 50 Resp: 856
 Ion Ratio Lower Upper
 50 100
 52 27.8 26.4 39.6

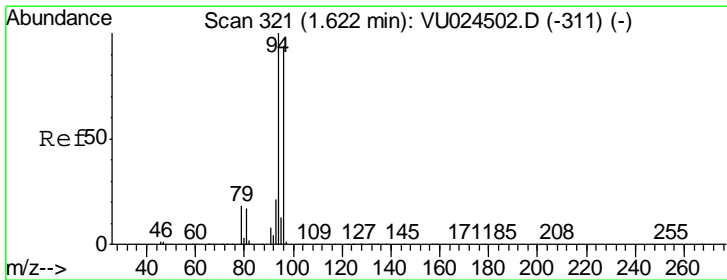
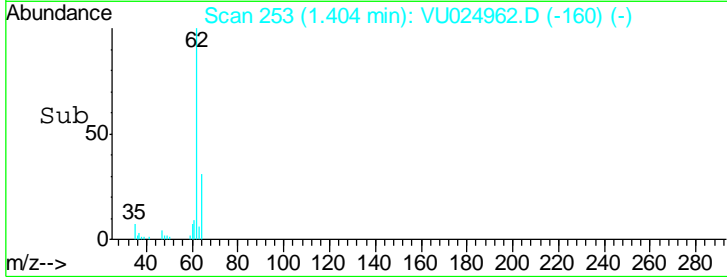
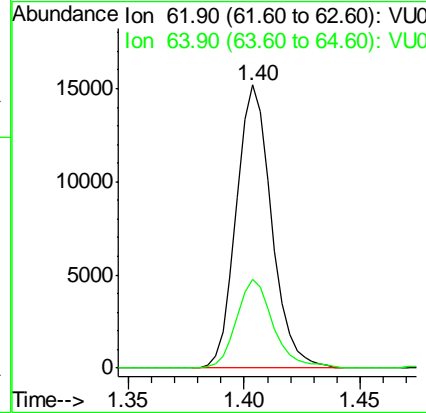
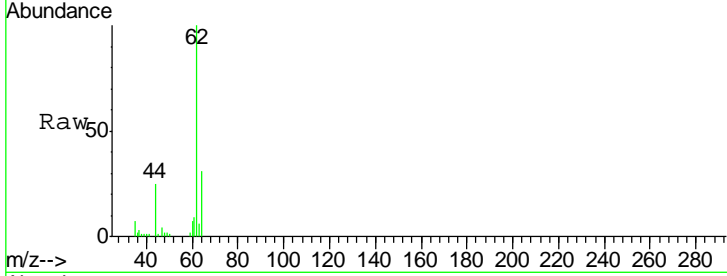




#4
 Vinyl Chloride
 Concen: 5.144 ug/l
 RT: 1.40 min Scan# 253
 Delta R.T. 0.00 min
 Lab File: VU024962.D
 Acq: 27 Jun 2018 13:26

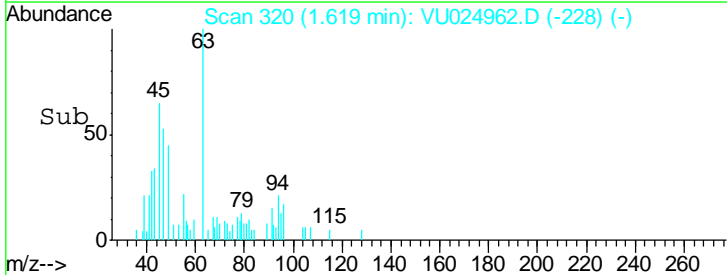
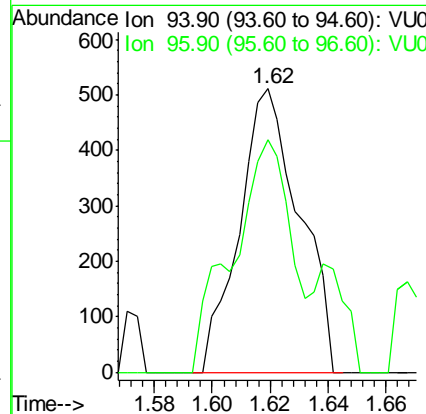
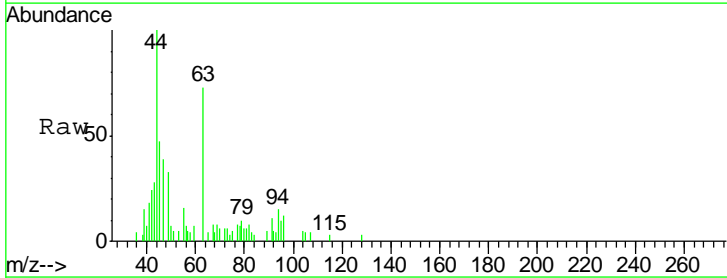
Instrument : MSVOA_U
 ClientSampled : WP021SB475-25-27-180620MEDL

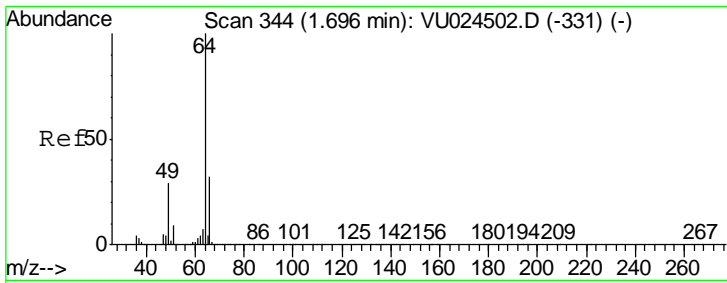
Tgt Ion: 62 Resp: 15990
 Ion Ratio Lower Upper
 62 100
 64 31.3 24.8 37.2



#5
 Bromomethane
 Concen: 0.490 ug/l
 RT: 1.62 min Scan# 320
 Delta R.T. -0.00 min
 Lab File: VU024962.D
 Acq: 27 Jun 2018 13:26

Tgt Ion: 94 Resp: 736
 Ion Ratio Lower Upper
 94 100
 96 82.0 74.5 111.7

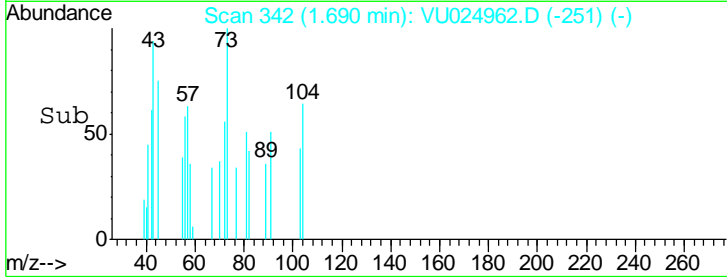
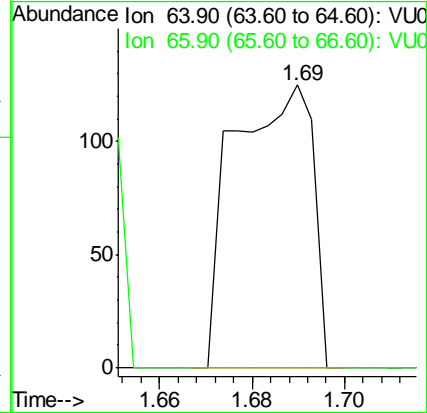
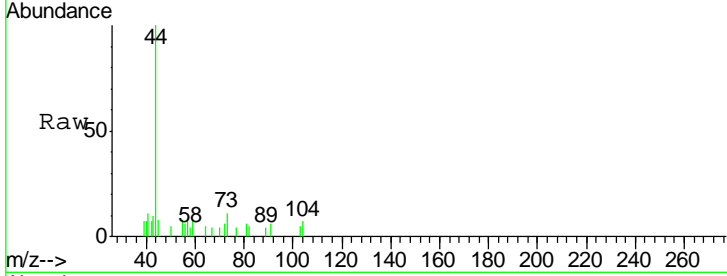




#6
 Chloroethane
 Concen: Below Cal
 RT: 1.69 min Scan# 342
 Delta R.T. -0.01 min
 Lab File: VU024962.D
 Acq: 27 Jun 2018 13:26

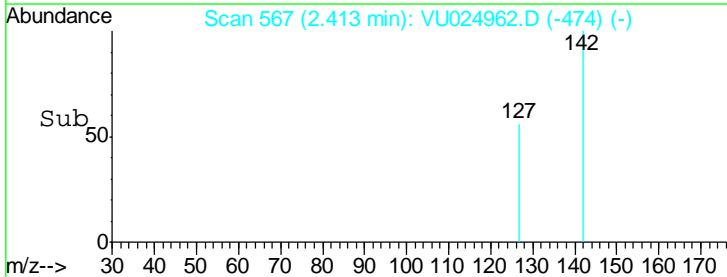
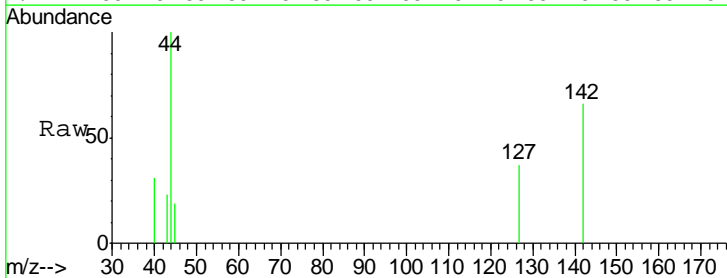
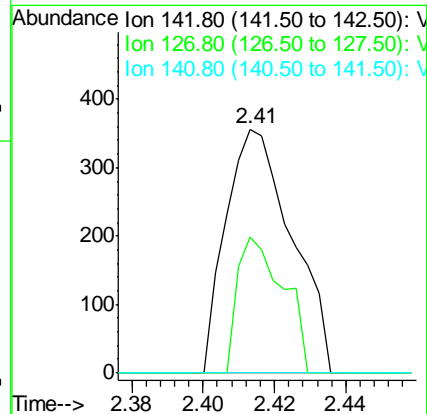
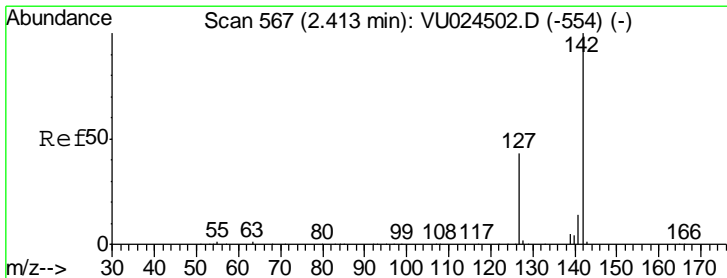
Instrument : MSVOA_U
 ClientSampleId : WP021SB475-25-27-180620MEDL

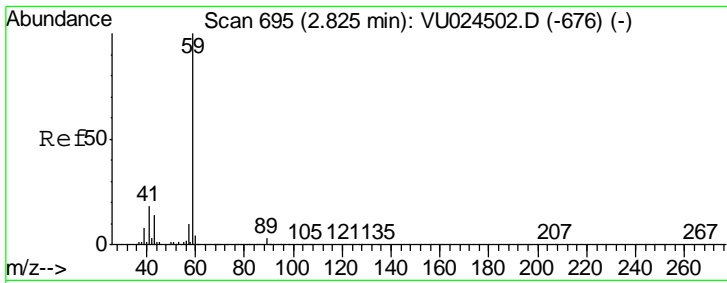
Tgt Ion	Resp	Lower	Upper
64	100		
66	0.0	25.5	38.3#



#10
 Methyl Iodide
 Concen: 5.452 ug/l
 RT: 2.41 min Scan# 567
 Delta R.T. 0.00 min
 Lab File: VU024962.D
 Acq: 27 Jun 2018 13:26

Tgt Ion	Resp	Lower	Upper
142	100		
127	38.8	35.6	53.4
141	0.0	11.7	17.5#

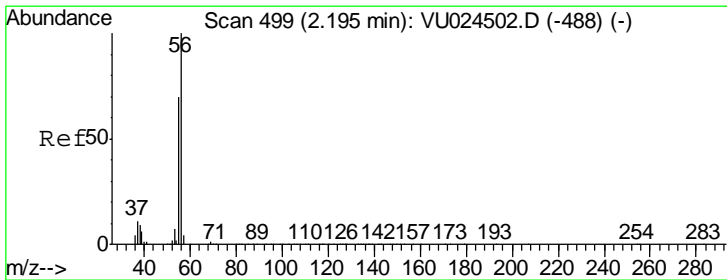
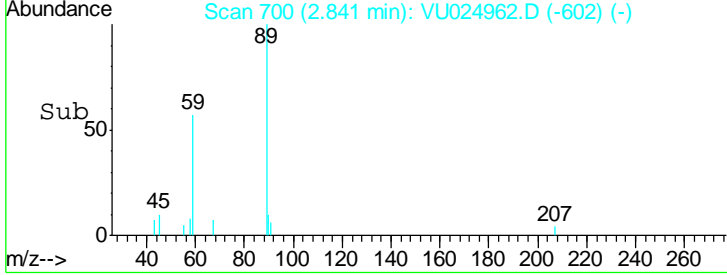
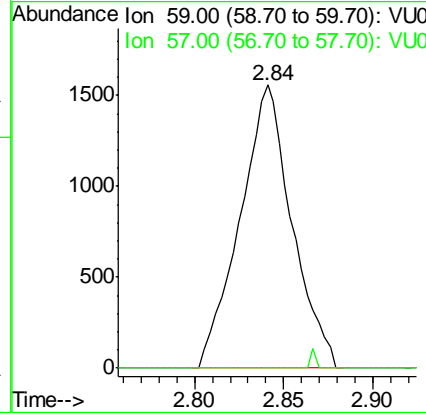
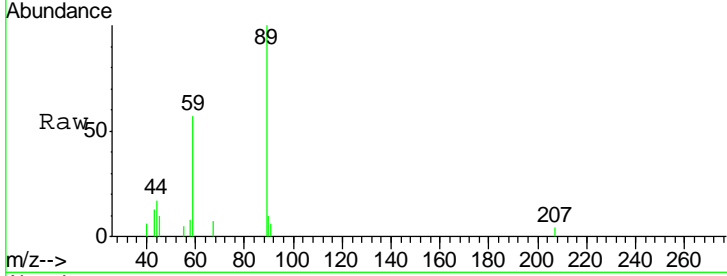




#11
 Tert butyl alcohol
 Concen: 3.367 ug/l
 RT: 2.84 min Scan# 700
 Delta R.T. 0.02 min
 Lab File: VU024962.D
 Acq: 27 Jun 2018 13:26

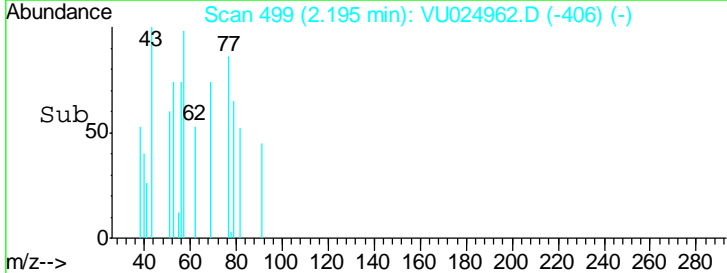
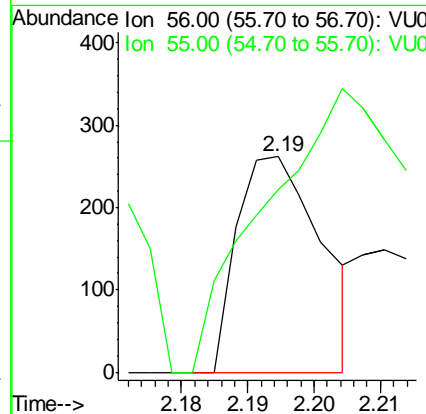
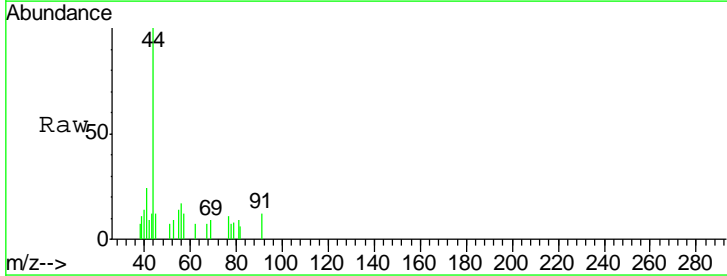
Instrument : MSVOA_U
 ClientSampled : WP021SB475-25-27-180620MEDL

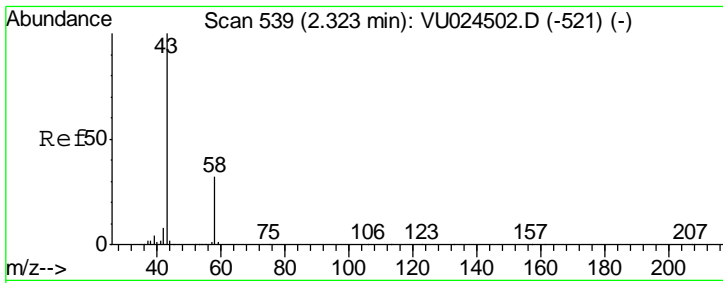
Tgt Ion: 59 Resp: 3151
 Ion Ratio Lower Upper
 59 100
 57 0.0 8.5 12.7#



#13
 Acrolein
 Concen: 0.470 ug/l
 RT: 2.19 min Scan# 499
 Delta R.T. 0.00 min
 Lab File: VU024962.D
 Acq: 27 Jun 2018 13:26

Tgt Ion: 56 Resp: 231
 Ion Ratio Lower Upper
 56 100
 55 220.3 58.4 87.6#

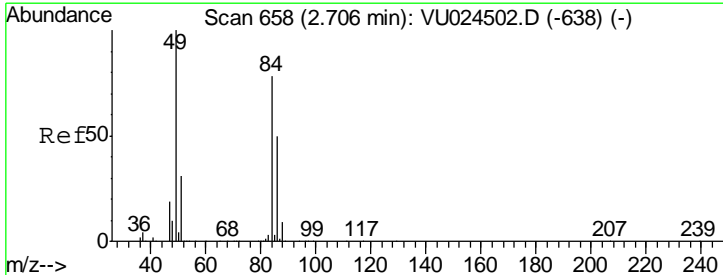
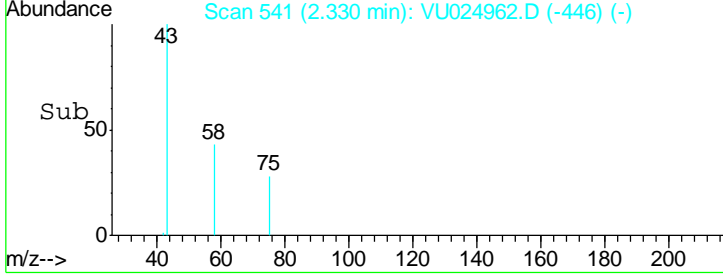
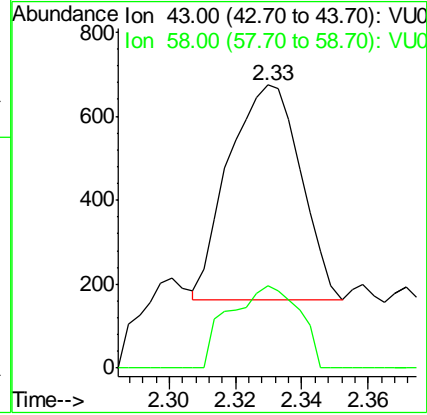
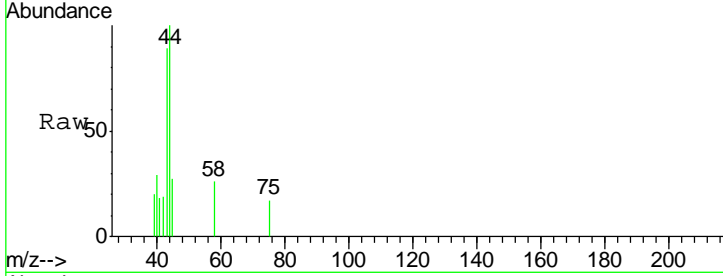




#16
 Acetone
 Concen: 0.371 ug/l
 RT: 2.33 min Scan# 541
 Delta R.T. 0.01 min
 Lab File: VU024962.D
 Acq: 27 Jun 2018 13:26

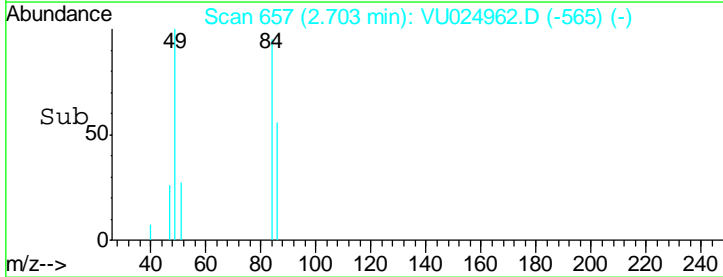
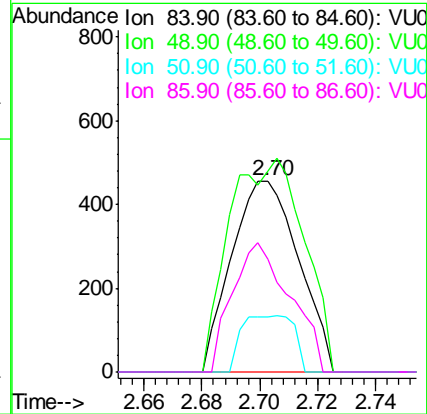
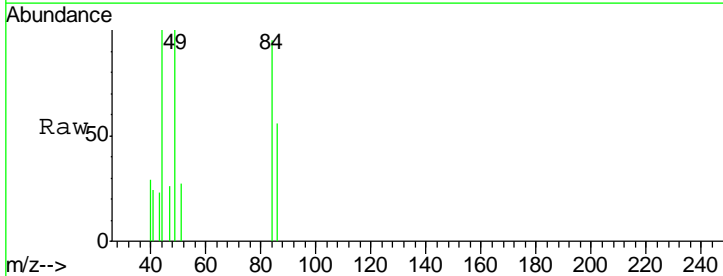
Instrument :
 MSVOA_U
ClientSampled :
 WP021SB475-25-27-180620MEDL

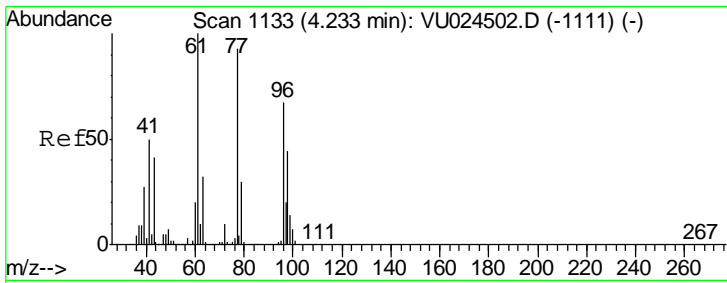
Tgt Ion	Resp	Lower	Upper
43	100		
58	38.4	24.4	36.6#



#20
 Methylene Chloride
 Concen: 0.226 ug/l
 RT: 2.70 min Scan# 657
 Delta R.T. -0.00 min
 Lab File: VU024962.D
 Acq: 27 Jun 2018 13:26

Tgt Ion	Resp	Lower	Upper
84	100		
49	105.0	103.8	155.8
51	28.7	32.0	48.0#
86	59.2	51.6	77.4

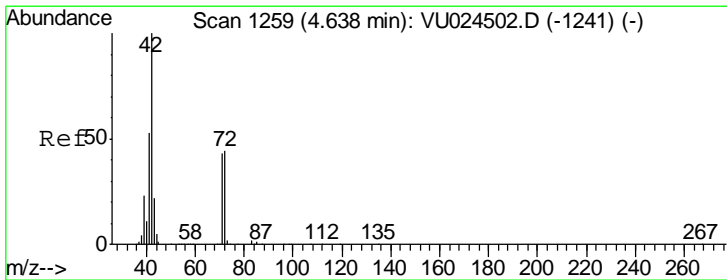
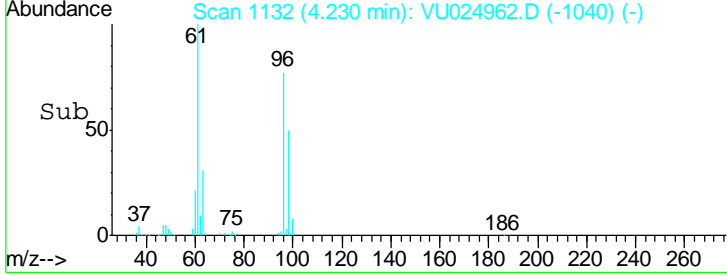
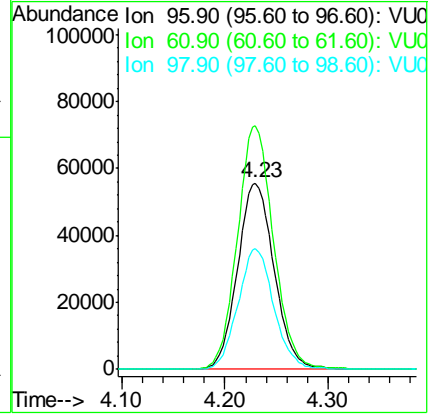
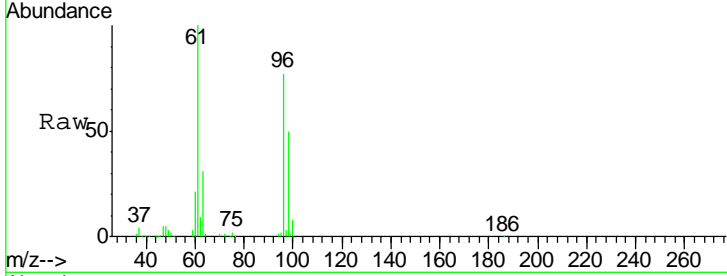




#27
 cis-1,2-Dichloroethene
 Concen: 40.373 ug/l
 RT: 4.23 min Scan# 1132
 Delta R.T. -0.00 min
 Lab File: VU024962.D
 Acq: 27 Jun 2018 13:26

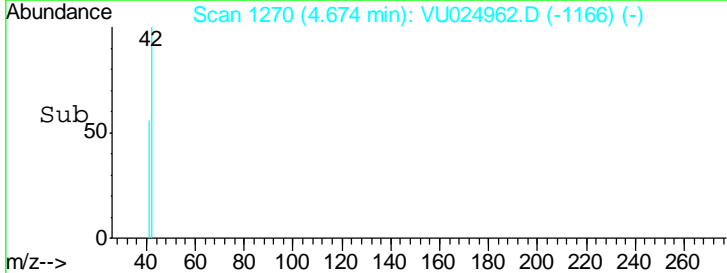
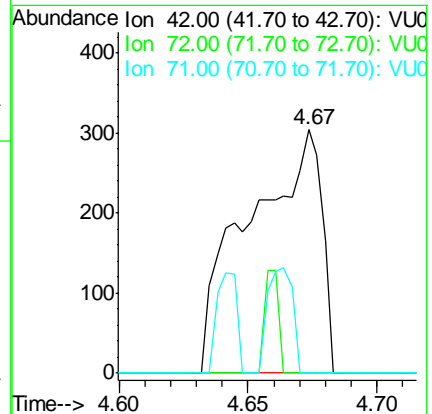
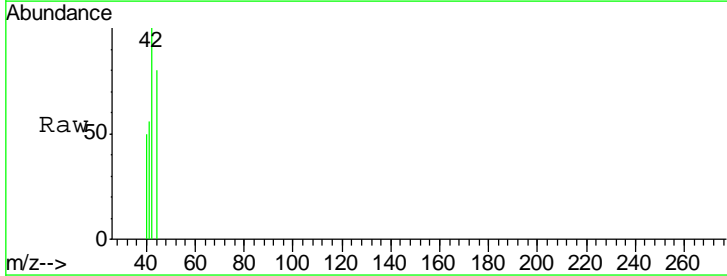
Instrument : MSVOA_U
 ClientSampleId : WP021SB475-25-27-180620MEDL

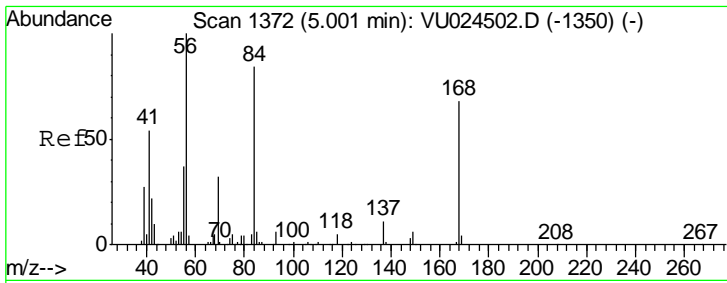
Tgt Ion	Resp	Lower	Upper
96	137198		
61	129.5	0.0	306.6
98	63.5	0.0	128.8



#29
 Tetrahydrofuran
 Concen: 0.345 ug/l
 RT: 4.67 min Scan# 1270
 Delta R.T. 0.04 min
 Lab File: VU024962.D
 Acq: 27 Jun 2018 13:26

Tgt Ion	Resp	Lower	Upper
42	594		
72	8.4	34.5	51.7#
71	15.3	32.2	48.4#

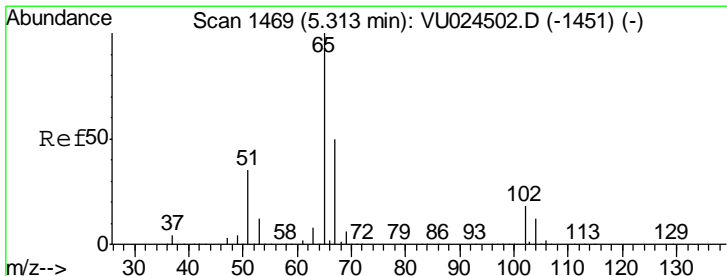
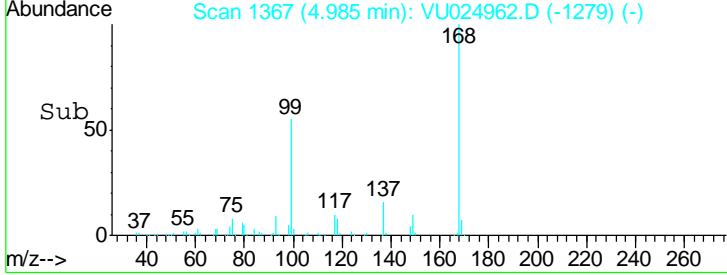
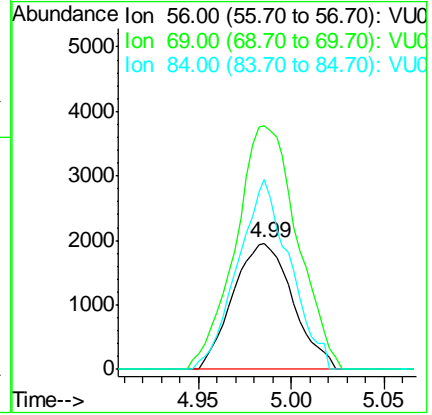
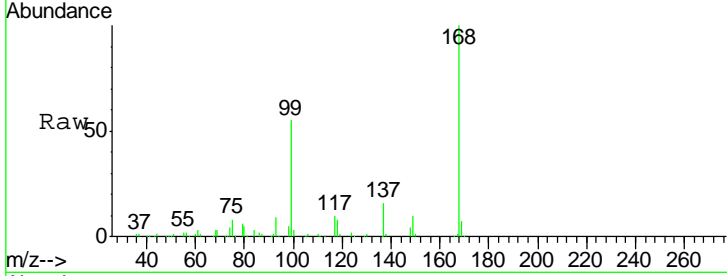




#31
 Cyclohexane
 Concen: Below Cal
 RT: 4.99 min Scan# 1367
 Delta R.T. -0.02 min
 Lab File: VU024962.D
 Acq: 27 Jun 2018 13:26

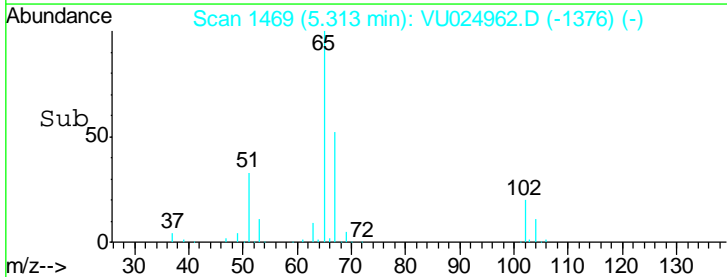
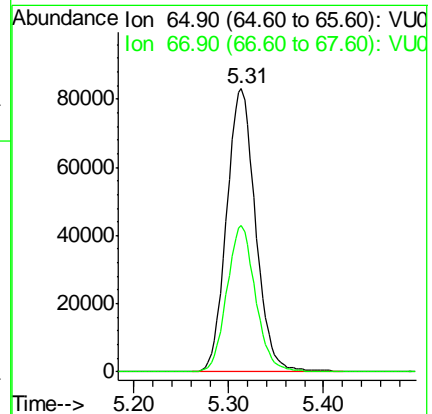
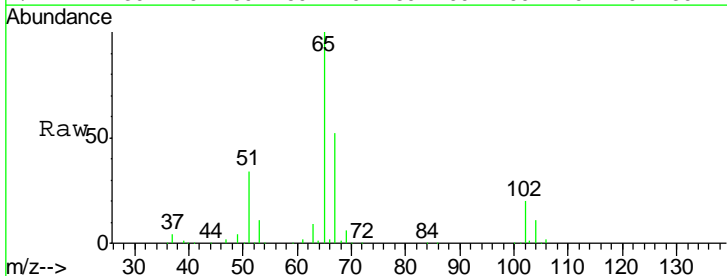
Instrument :
 MSVOA_U
 ClientSampleId :
 WP021SB475-25-27-180620MEDL

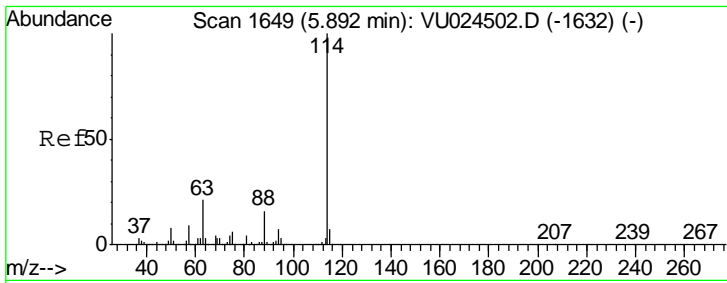
Tgt Ion	Resp	Lower	Upper
56	100		
69	193.3	24.8	37.2#
84	150.7	65.2	97.8#



#33
 1,2-Dichloroethane-d4
 Concen: 45.981 ug/l
 RT: 5.31 min Scan# 1469
 Delta R.T. 0.00 min
 Lab File: VU024962.D
 Acq: 27 Jun 2018 13:26

Tgt Ion	Resp	Lower	Upper
65	100		
67	51.0	0.0	107.0

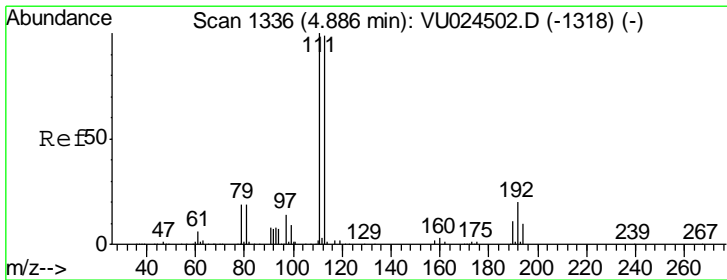
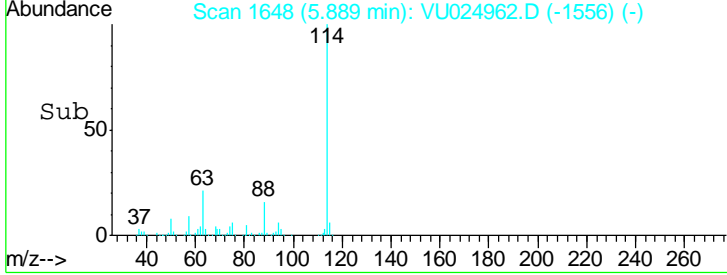
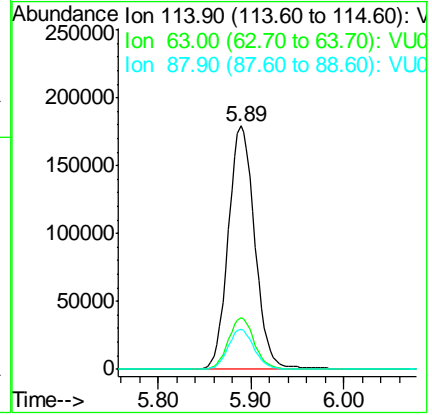
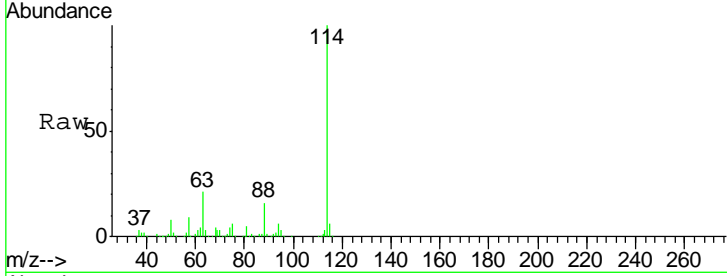




#34
 1,4-Difluorobenzene
 Concen: 50.000 ug/l
 RT: 5.89 min Scan# 1648
 Delta R.T. -0.00 min
 Lab File: VU024962.D
 Acq: 27 Jun 2018 13:26

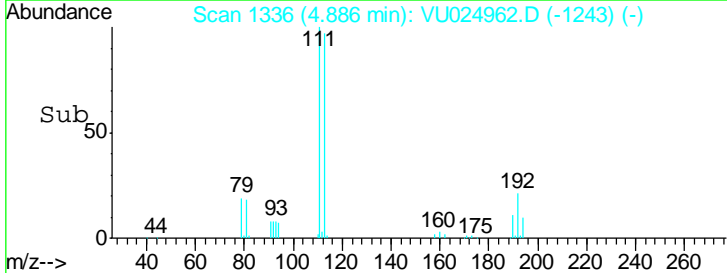
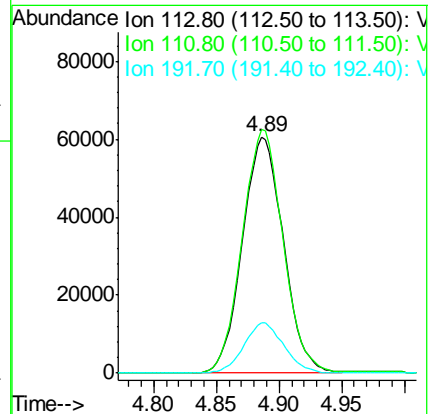
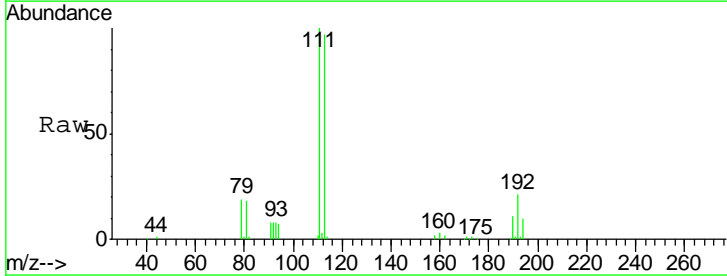
Instrument : MSVOA_U
 ClientSampleId : WP021SB475-25-27-180620MEDL

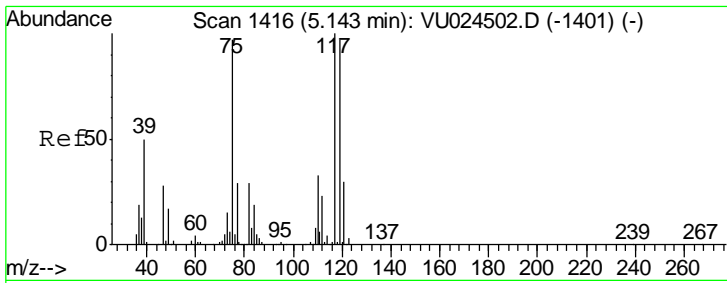
Tgt Ion	Resp	Lower	Upper
114	100		
63	21.0	0.0	45.4
88	16.4	0.0	31.0



#35
 Dibromofluoromethane
 Concen: 46.621 ug/l
 RT: 4.89 min Scan# 1336
 Delta R.T. 0.00 min
 Lab File: VU024962.D
 Acq: 27 Jun 2018 13:26

Tgt Ion	Resp	Lower	Upper
113	100		
111	102.4	82.2	123.4
192	21.0	16.2	24.4

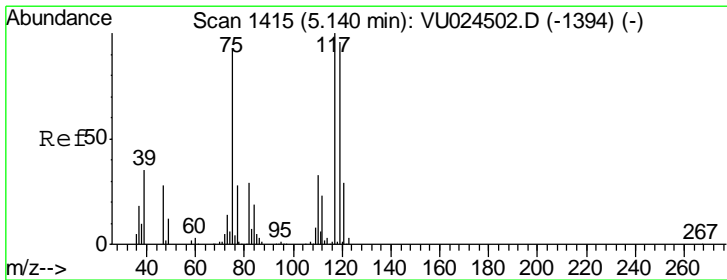
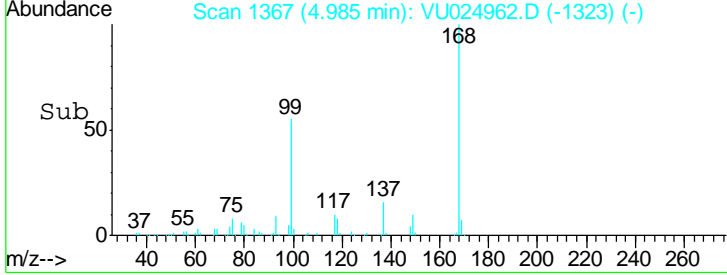
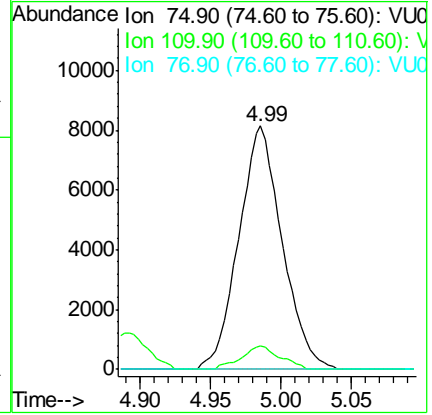
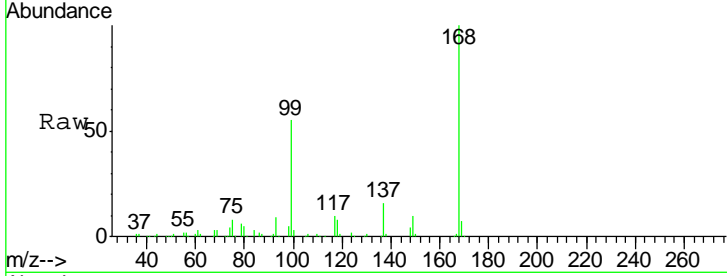




#36
 1,1-Dichloropropene
 Concen: 4.188 ug/l
 RT: 4.99 min Scan# 1367
 Delta R.T. -0.16 min
 Lab File: VU024962.D
 Acq: 27 Jun 2018 13:26

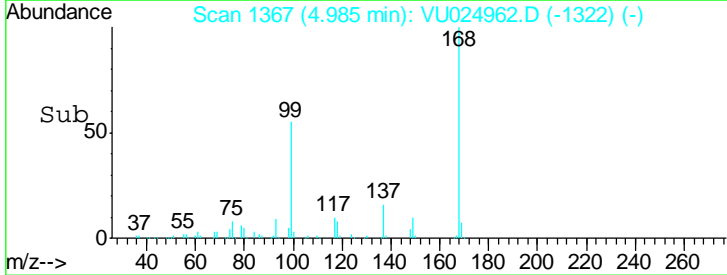
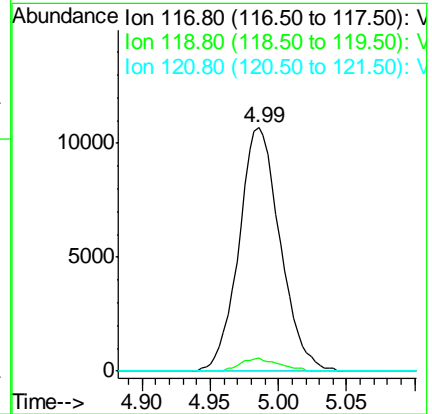
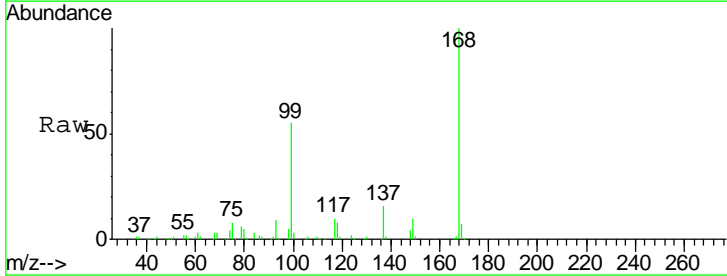
Instrument : MSVOA_U
 ClientSampled : WP021SB475-25-27-180620MEDL

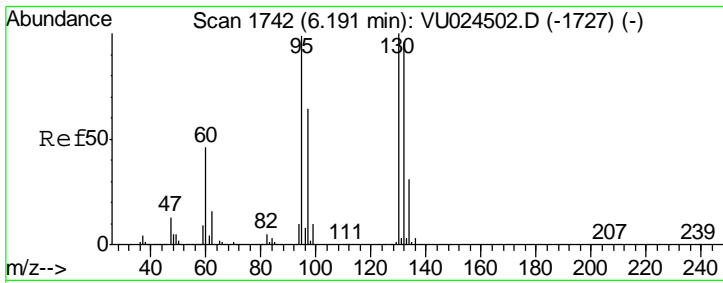
Tgt Ion	Resp	Lower	Upper
75	17516		
110	8.6	17.0	50.9#
77	0.0	24.2	36.4#



#38
 Carbon Tetrachloride
 Concen: 4.867 ug/l
 RT: 4.99 min Scan# 1367
 Delta R.T. -0.15 min
 Lab File: VU024962.D
 Acq: 27 Jun 2018 13:26

Tgt Ion	Resp	Lower	Upper
117	22384		
119	5.2	76.1	114.1#
121	0.0	23.7	35.5#

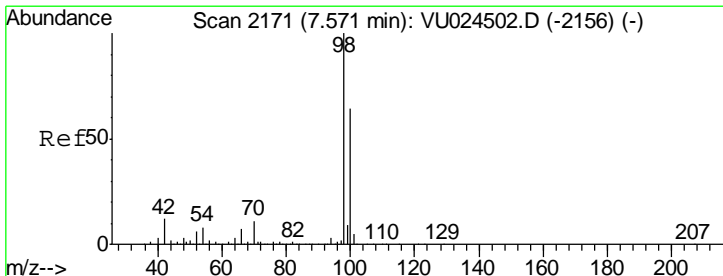
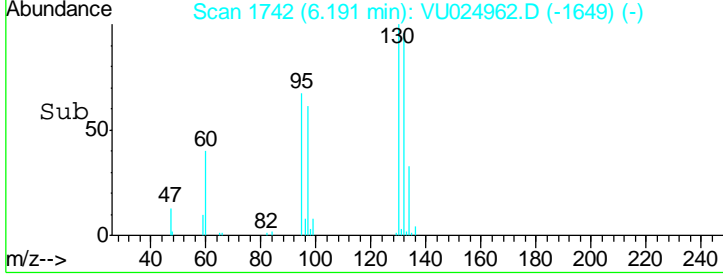
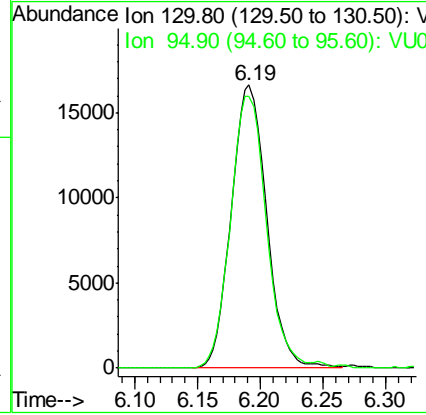
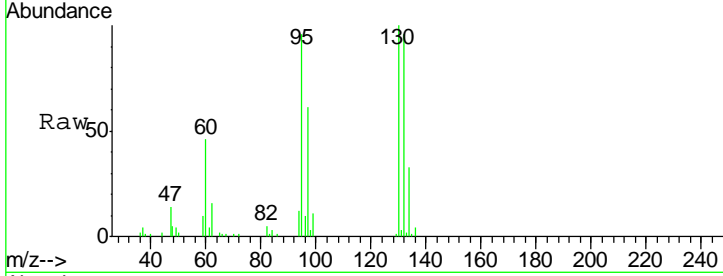




#44
 Trichloroethene
 Concen: 9.646 ug/l
 RT: 6.19 min Scan# 1742
 Delta R.T. 0.00 min
 Lab File: VU024962.D
 Acq: 27 Jun 2018 13:26

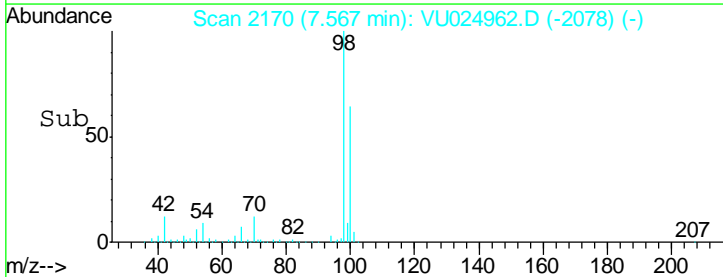
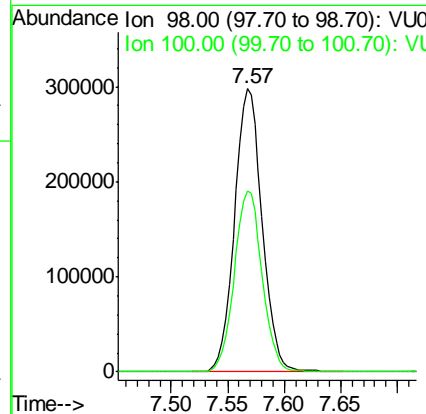
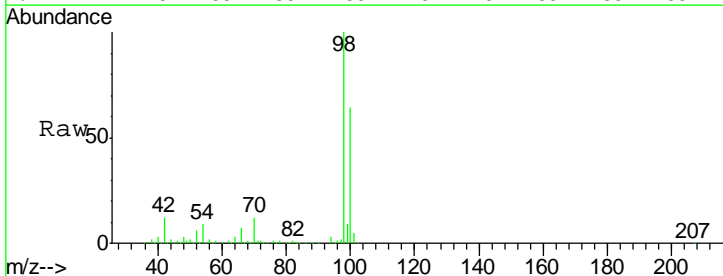
Instrument : MSVOA_U
 ClientSampled : WP021SB475-25-27-180620MEDL

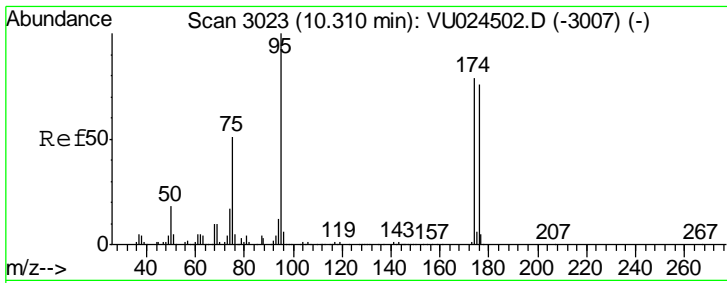
Tgt Ion: 130 Resp: 32717
 Ion Ratio Lower Upper
 130 100
 95 96.1 0.0 202.4



#50
 Toluene-d8
 Concen: 46.913 ug/l
 RT: 7.57 min Scan# 2170
 Delta R.T. -0.00 min
 Lab File: VU024962.D
 Acq: 27 Jun 2018 13:26

Tgt Ion: 98 Resp: 505474
 Ion Ratio Lower Upper
 98 100
 100 64.3 51.1 76.7

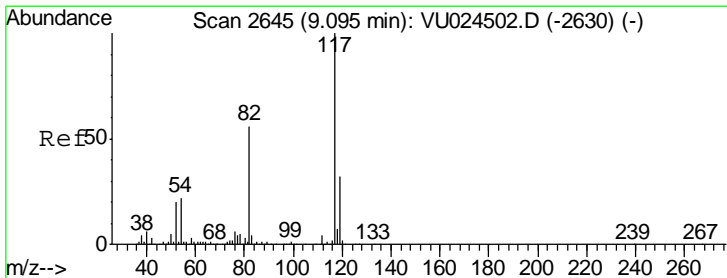
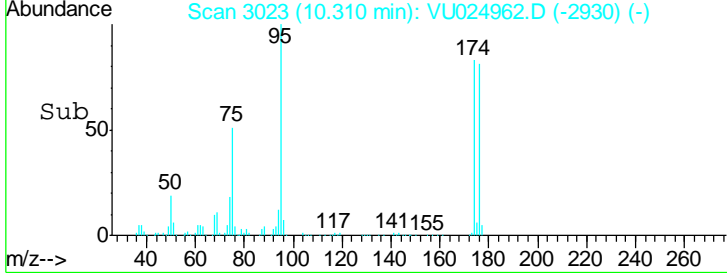
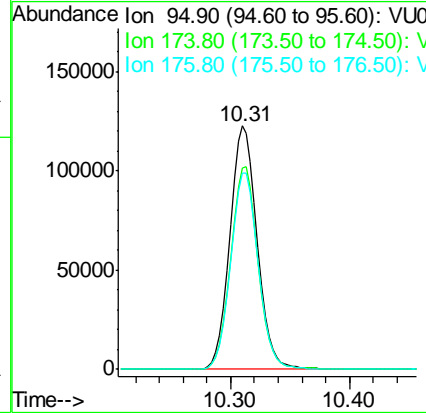
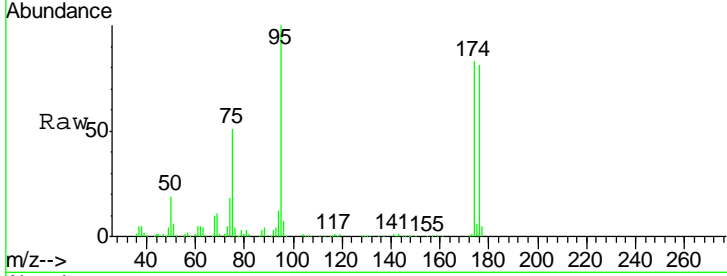




#62
 4-Bromofluorobenzene
 Concen: 45.361 ug/l
 RT: 10.31 min Scan# 3023
 Delta R.T. 0.00 min
 Lab File: VU024962.D
 Acq: 27 Jun 2018 13:26

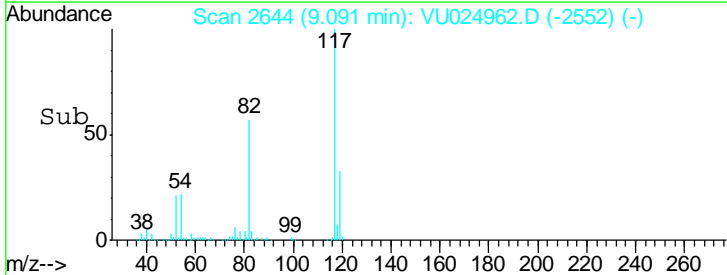
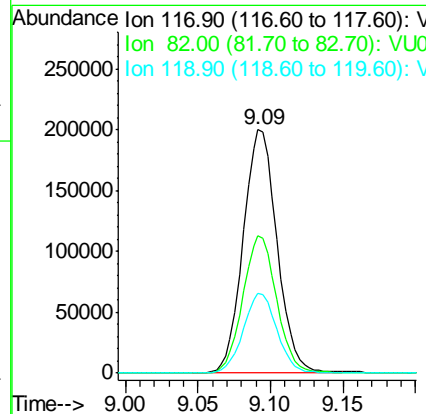
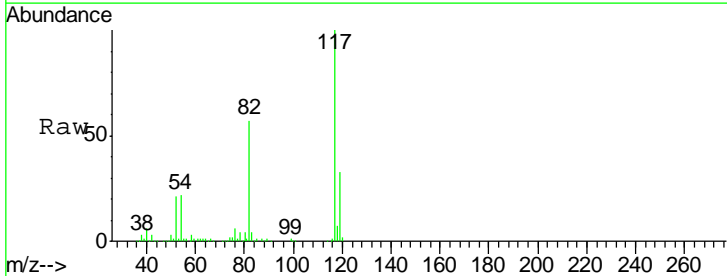
Instrument : MSVOA_U
 ClientSampled : WP021SB475-25-27-180620MEDL

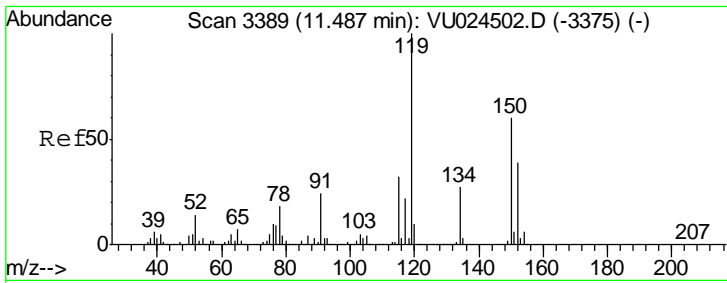
Tgt Ion	Resp	Lower	Upper
95	194056		
174	83.8	0.0	165.8
176	81.7	0.0	159.4



#63
 Chlorobenzene-d5
 Concen: 50.000 ug/l
 RT: 9.09 min Scan# 2644
 Delta R.T. -0.00 min
 Lab File: VU024962.D
 Acq: 27 Jun 2018 13:26

Tgt Ion	Resp	Lower	Upper
117	325509		
82	56.6	44.3	66.5
119	32.9	25.4	38.2

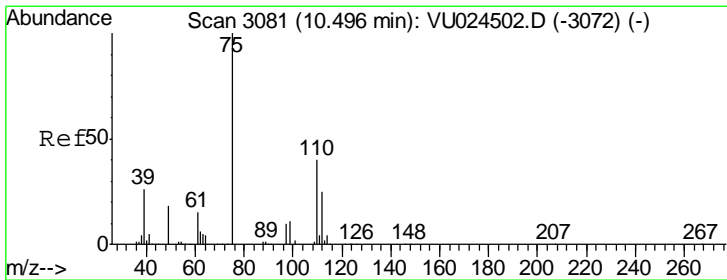
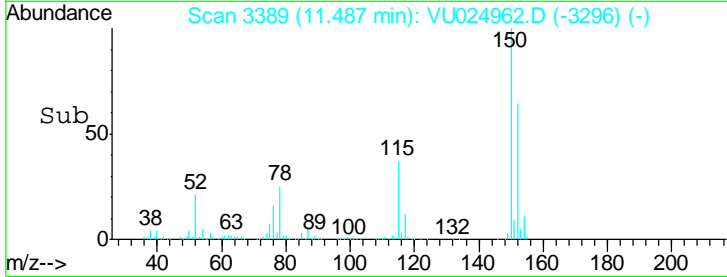
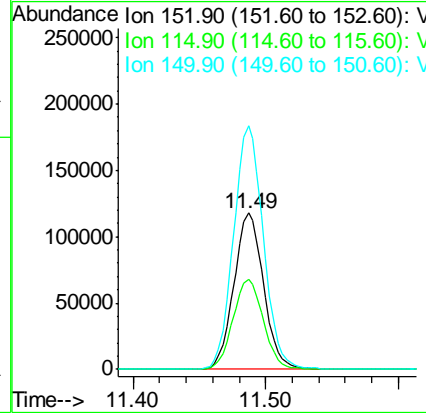
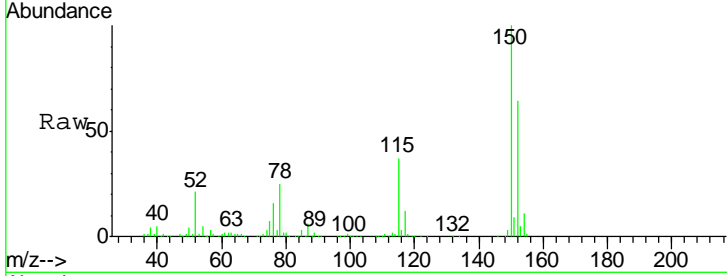




#72
 1,4-Dichlorobenzene-d4
 Concen: 50.000 ug/l
 RT: 11.49 min Scan# 3389
 Delta R.T. 0.00 min
 Lab File: VU024962.D
 Acq: 27 Jun 2018 13:26

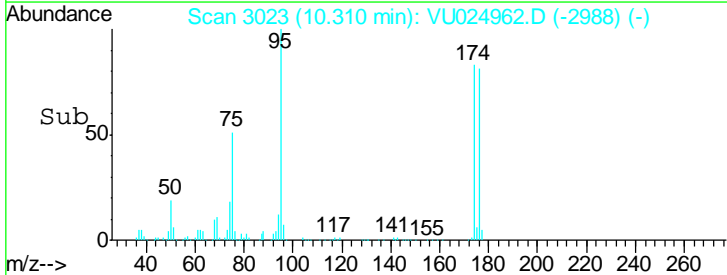
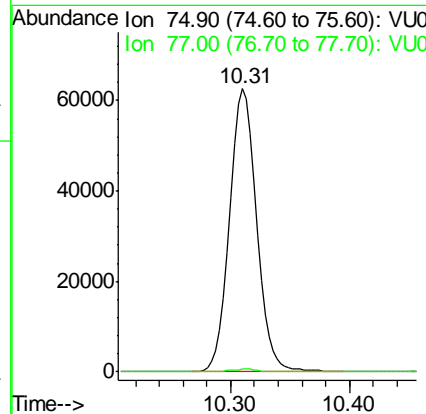
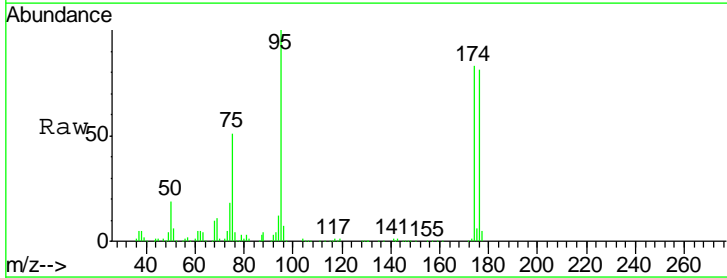
Instrument : MSVOA_U
 ClientSampled : WP021SB475-25-27-180620MEDL

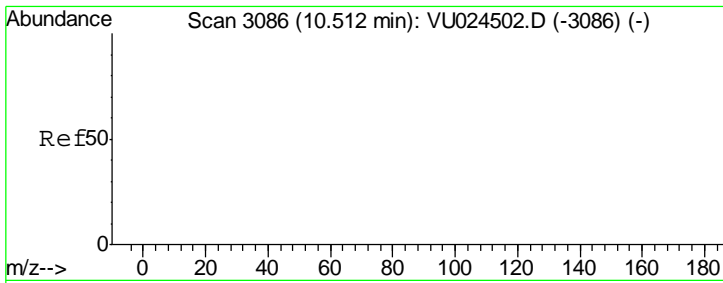
Tgt Ion	Resp	Lower	Upper
152	182981		
115	59.2	43.0	129.0
150	156.6	0.0	354.0



#76
 1,2,3-Trichloropropane
 Concen: 24.594 ug/l
 RT: 10.31 min Scan# 3023
 Delta R.T. -0.19 min
 Lab File: VU024962.D
 Acq: 27 Jun 2018 13:26

Tgt Ion	Resp	Lower	Upper
75	99078		
77	1.0	20.9	62.7#

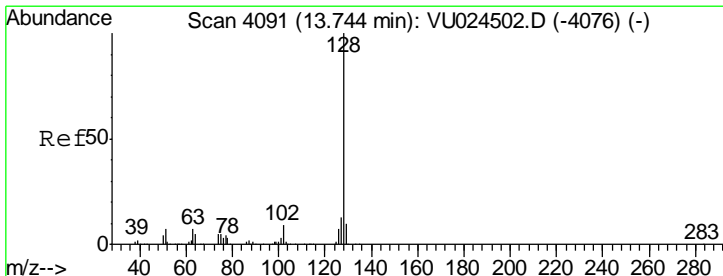
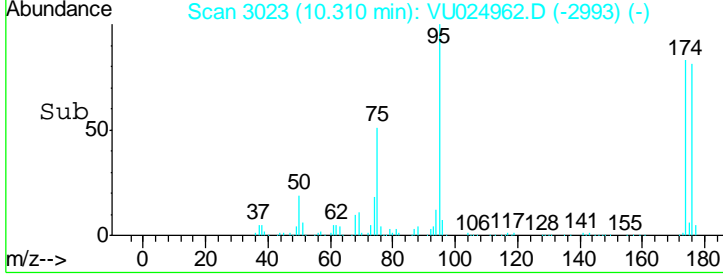
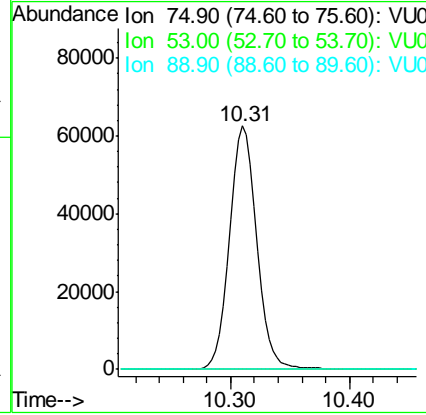
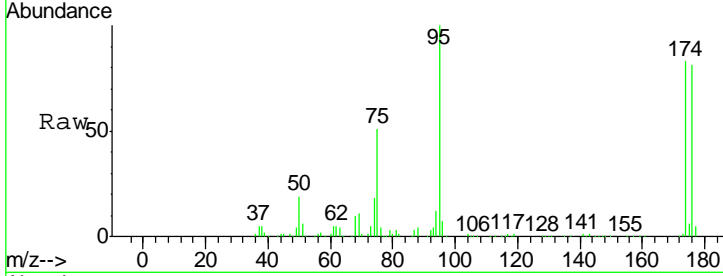




#81
 trans-1,4-Dichloro-2-butene
 Concen: 56.920 ug/l
 RT: 10.31 min Scan# 3023
 Delta R.T. -0.20 min
 Lab File: VU024962.D
 Acq: 27 Jun 2018 13:26

Instrument : MSVOA_U
 ClientSampled : WP021SB475-25-27-180620MEDL

Tgt Ion	Resp	Lower	Upper
75	100		
53	0.0	0.0	0.0
89	0.0	0.0	0.0



#95
 Naphthalene
 Concen: 0.781 ug/l
 RT: 13.77 min Scan# 4098
 Delta R.T. 0.02 min
 Lab File: VU024962.D
 Acq: 27 Jun 2018 13:26

Tgt Ion	Resp	Lower	Upper
128	100		
127	0.0	10.6	16.0#
129	0.0	8.6	12.8#

