

Data Path : Z:\VOASRV\HPCHEM1\MSVOA U\DATA\VU062718\
 Data File : VU024963.D
 Acq On : 27 Jun 2018 13:50
 Operator : MD/SY
 Sample : J3669-19MEDL 5X
 Misc : 6.02µ/5.0mL/100uL/5.00ML/MSVOA_U/MEOH
 ALS Vial : 10 Sample Multiplier: 1

Instrument :
 MSVOA_U
ClientSampleId :
 WP021SB475-27-29-180620MEDL

Quant Time: Jun 28 02:54:00 2018
 Quant Method : Z:\VOASRV\HPCHEM1\MSVOA_U\METHOD\82U061318W.M
 Quant Title : SW846 8260
 QLast Update : Wed Jun 13 13:55:26 2018
 Response via : Initial Calibration

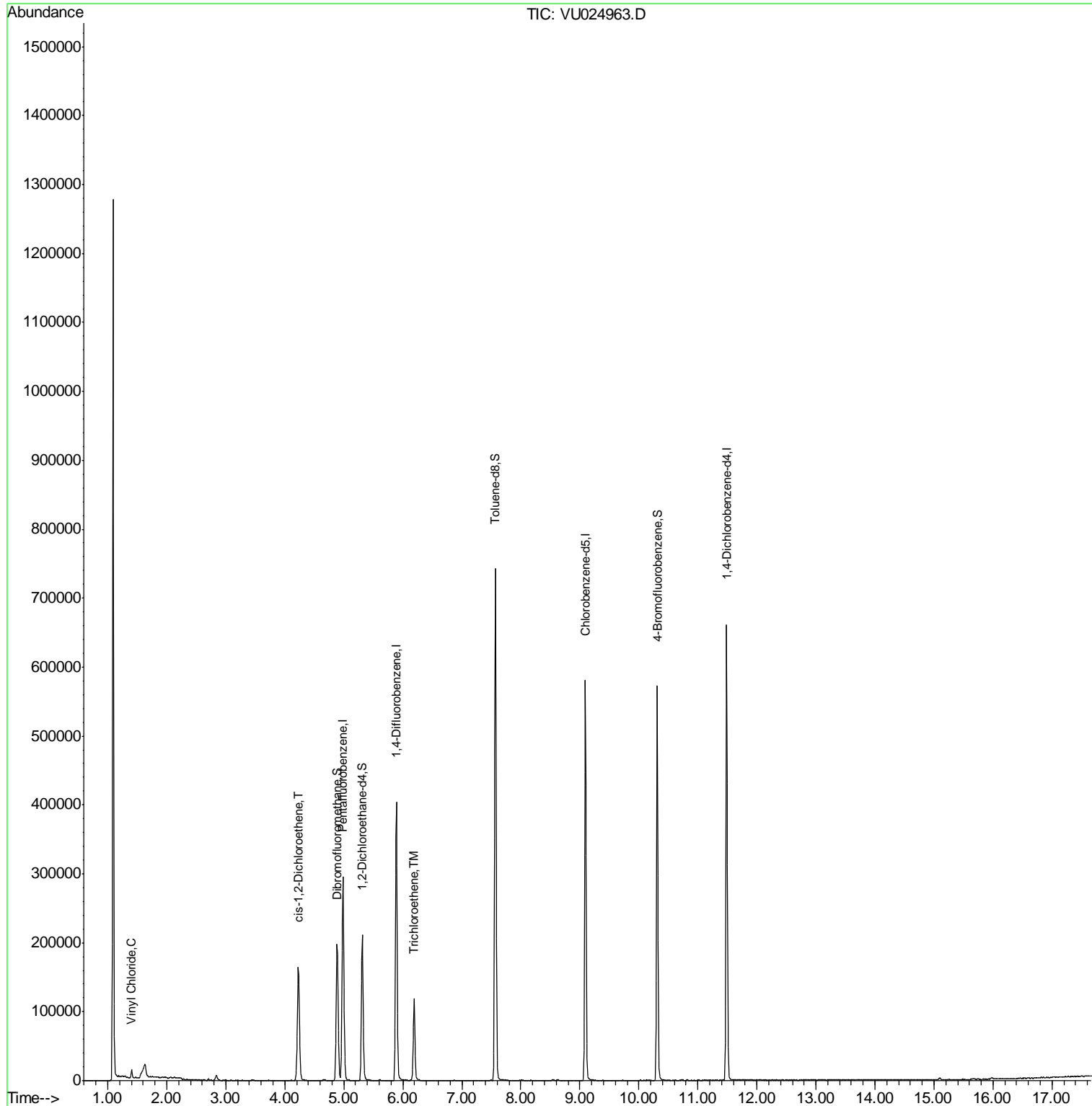
Internal Standards	R.T.	QIon	Response	Conc	Units	Dev(Min)
1) Pentafluorobenzene	4.99	168	229651	50.00	ug/l	0.00
34) 1,4-Difluorobenzene	5.89	114	340685	50.00	ug/l	0.00
63) Chlorobenzene-d5	9.09	117	312212	50.00	ug/l	0.00
72) 1,4-Dichlorobenzene-d4	11.49	152	172198	50.00	ug/l	0.00
System Monitoring Compounds						
33) 1,2-Dichloroethane-d4	5.31	65	170424	45.46	ug/l	0.00
Spiked Amount	50.000		Recovery	=	90.92%	
35) Dibromofluoromethane	4.89	113	132576	46.89	ug/l	0.00
Spiked Amount	50.000		Recovery	=	93.78%	
50) Toluene-d8	7.57	98	484086	46.94	ug/l	0.00
Spiked Amount	50.000		Recovery	=	93.88%	
62) 4-Bromofluorobenzene	10.31	95	183287	44.76	ug/l	0.00
Spiked Amount	50.000		Recovery	=	89.52%	
Target Compounds						
4) Vinyl Chloride	1.40	62	7512	2.48	ug/l	96
27) cis-1,2-Dichloroethene	4.23	96	92330	27.89	ug/l	87
44) Trichloroethene	6.19	130	42146	12.98	ug/l	99

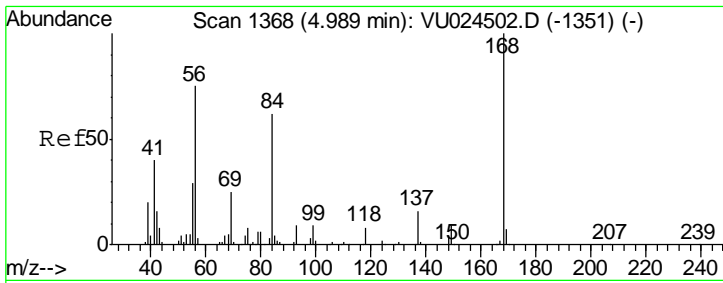
(#) = qualifier out of range (m) = manual integration (+) = signals summed

Data Path : Z:\VOASRV\HPCHEM1\MSVOA U\DATA\VU062718\
Data File : VU024963.D
Acq On : 27 Jun 2018 13:50
Operator : MD/SY
Sample : J3669-19MEDL 5X
Misc : 6.02µ/5.0mL/100uL/5.00ML/MSVOA_U/MEOH
ALS Vial : 10 Sample Multiplier: 1

Instrument :
MSVOA_U
ClientSampled :
WP021SB475-27-29-180620MEDL

Quant Time: Jun 28 02:54:00 2018
Quant Method : Z:\VOASRV\HPCHEM1\MSVOA_U\METHOD\82U061318W.M
Quant Title : SW846 8260
QLast Update : Wed Jun 13 13:55:26 2018
Response via : Initial Calibration

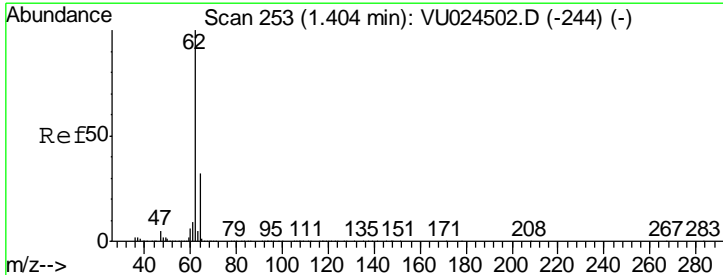
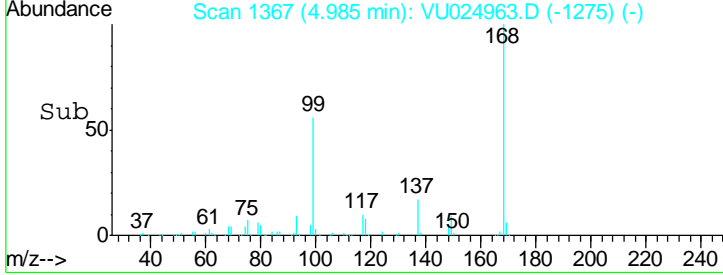
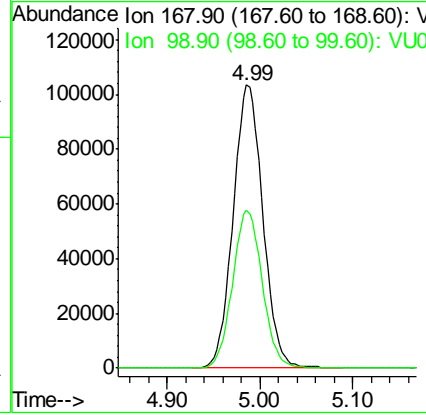
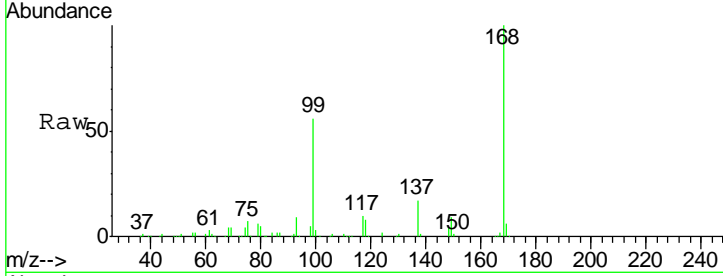




#1
 Pentafluorobenzene
 Concen: 50.00 ug/l
 RT: 4.99 min Scan# 1367
 Delta R.T. -0.00 min
 Lab File: VU024963.D
 Acq: 27 Jun 2018 13:50

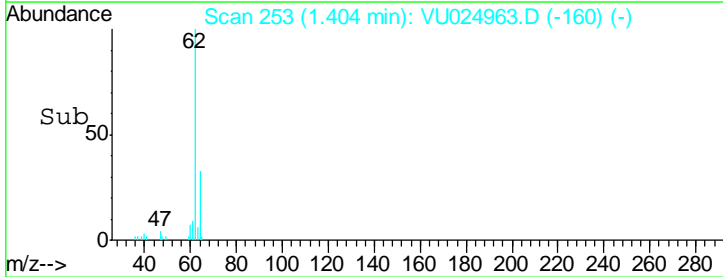
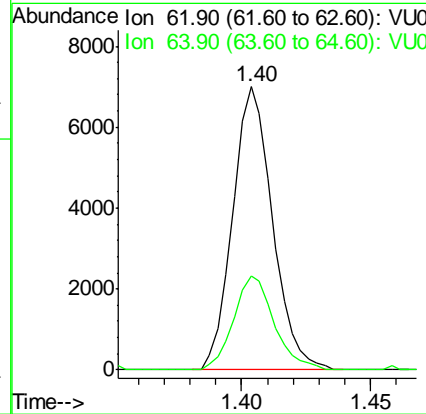
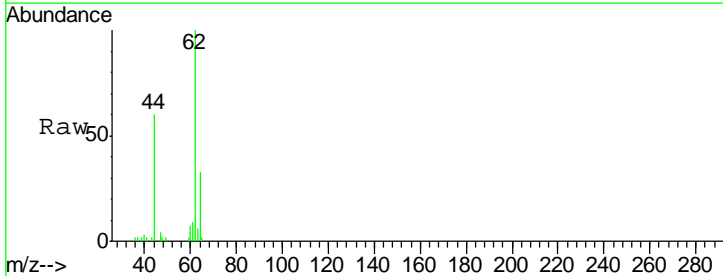
Instrument :
 MSVOA_U
 ClientSampleId :
 WP021SB475-27-29-180620MEDL

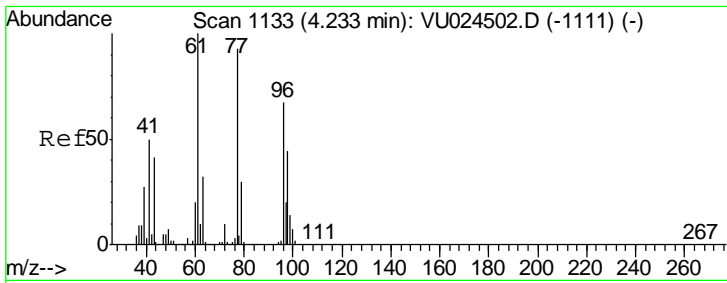
Tgt Ion: 168 Resp: 229651
 Ion Ratio Lower Upper
 168 100
 99 55.7 43.2 64.8



#4
 Vinyl Chloride
 Concen: 2.48 ug/l
 RT: 1.40 min Scan# 253
 Delta R.T. 0.00 min
 Lab File: VU024963.D
 Acq: 27 Jun 2018 13:50

Tgt Ion: 62 Resp: 7512
 Ion Ratio Lower Upper
 62 100
 64 33.3 24.8 37.2

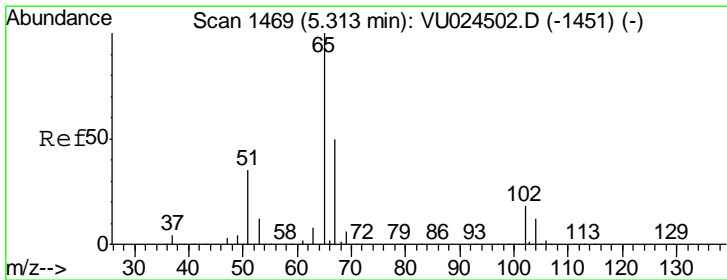
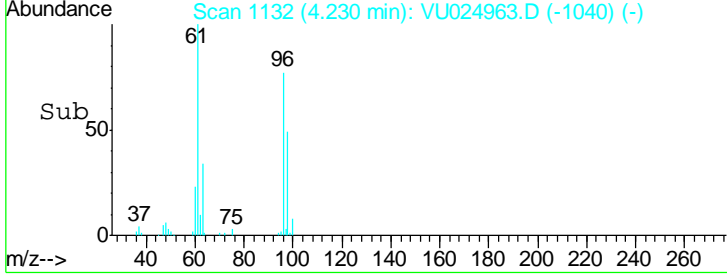
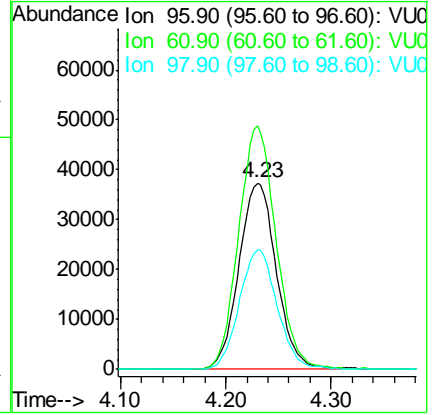
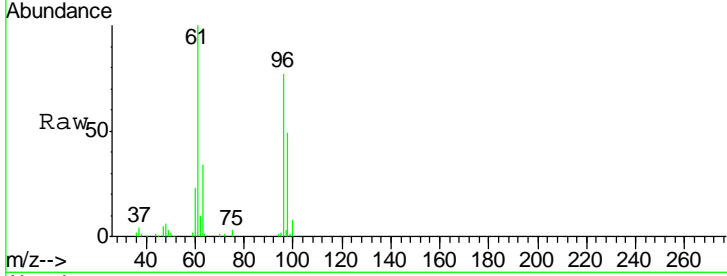




#27
 cis-1,2-Dichloroethene
 Concen: 27.89 ug/l
 RT: 4.23 min Scan# 1132
 Delta R.T. -0.00 min
 Lab File: VU024963.D
 Acq: 27 Jun 2018 13:50

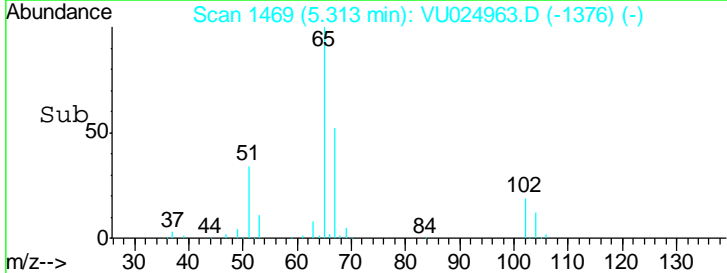
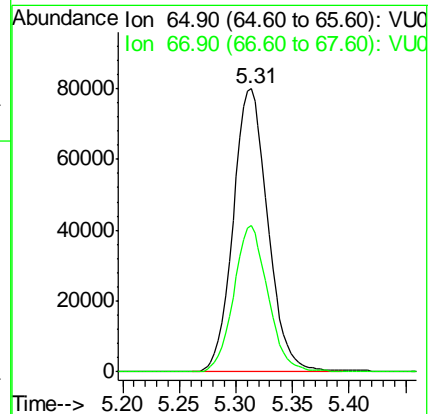
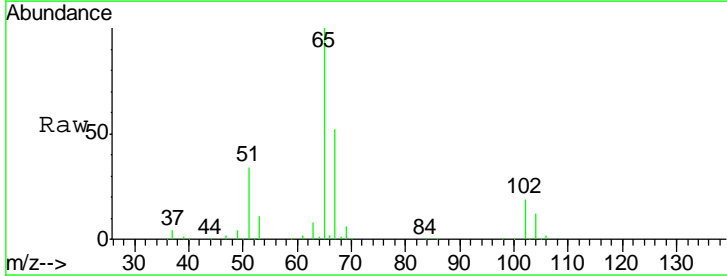
Instrument :
 MSVOA_U
ClientSampled :
 WP021SB475-27-29-180620MEDL

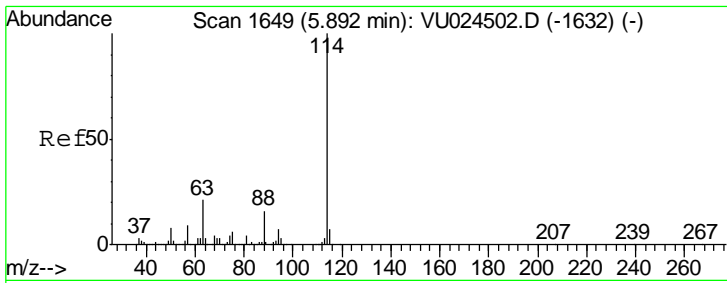
Tgt Ion	Resp	Lower	Upper
96	92330		
61	130.2	0.0	306.6
98	64.9	0.0	128.8



#33
 1,2-Dichloroethane-d4
 Concen: 45.46 ug/l
 RT: 5.31 min Scan# 1469
 Delta R.T. 0.00 min
 Lab File: VU024963.D
 Acq: 27 Jun 2018 13:50

Tgt Ion	Resp	Lower	Upper
65	170424		
67	51.0	0.0	107.0

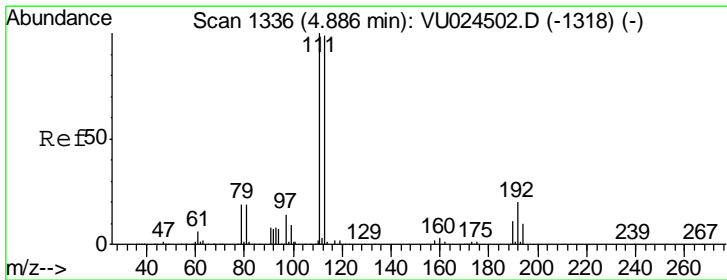
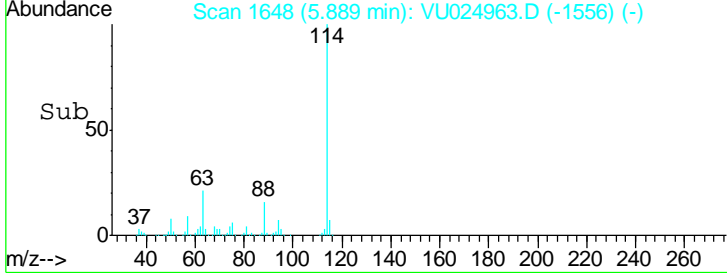
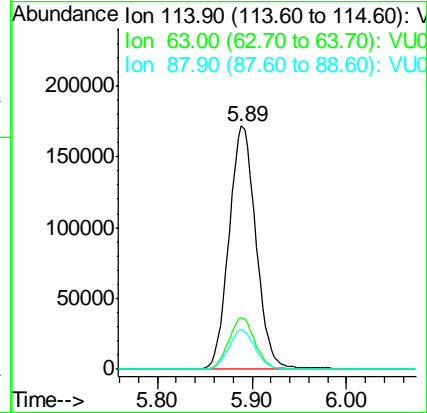
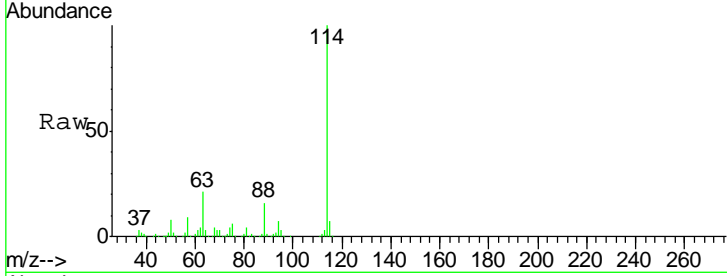




#34
 1,4-Difluorobenzene
 Concen: 50.00 ug/l
 RT: 5.89 min Scan# 1648
 Delta R.T. -0.00 min
 Lab File: VU024963.D
 Acq: 27 Jun 2018 13:50

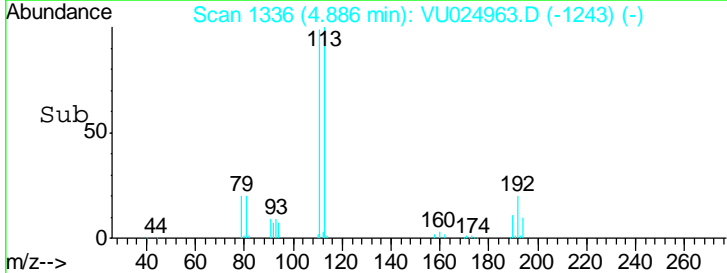
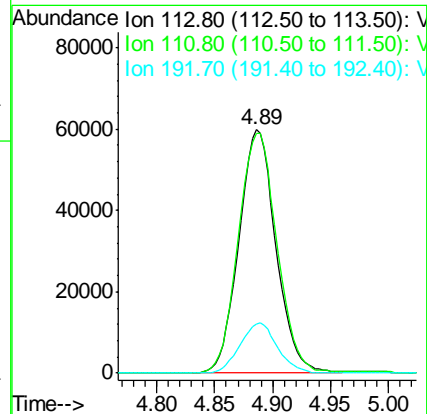
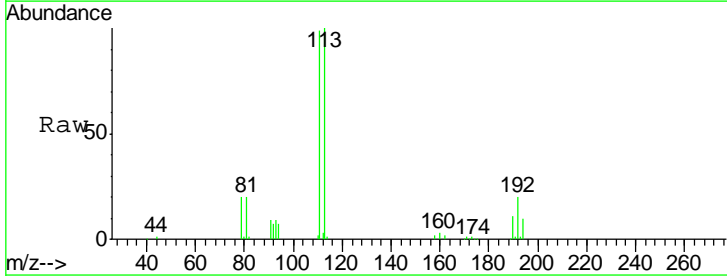
Instrument : MSVOA_U
 ClientSampled : WP021SB475-27-29-180620MEDL

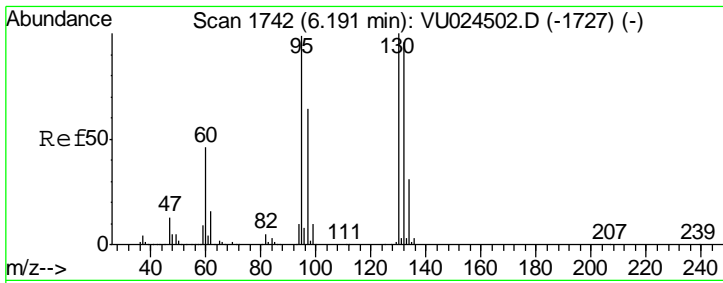
Tgt Ion	Resp	Lower	Upper
114	100		
63	21.3	0.0	45.4
88	16.3	0.0	31.0



#35
 Dibromofluoromethane
 Concen: 46.89 ug/l
 RT: 4.89 min Scan# 1336
 Delta R.T. 0.00 min
 Lab File: VU024963.D
 Acq: 27 Jun 2018 13:50

Tgt Ion	Resp	Lower	Upper
113	100		
111	103.1	82.2	123.4
192	20.8	16.2	24.4

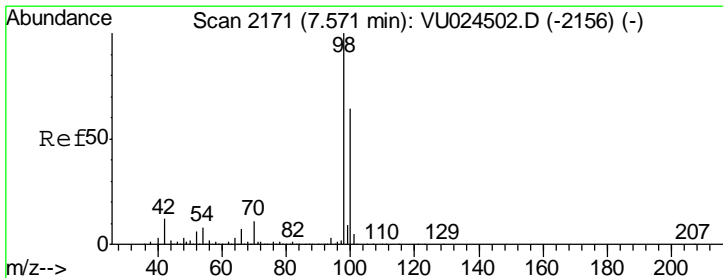
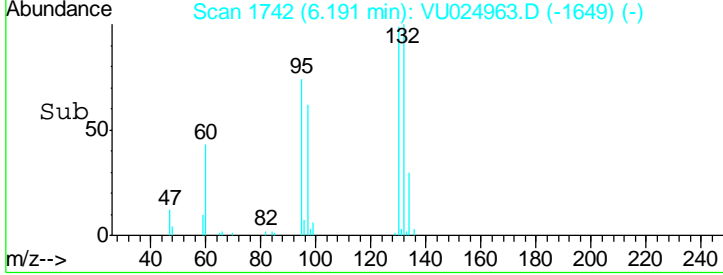
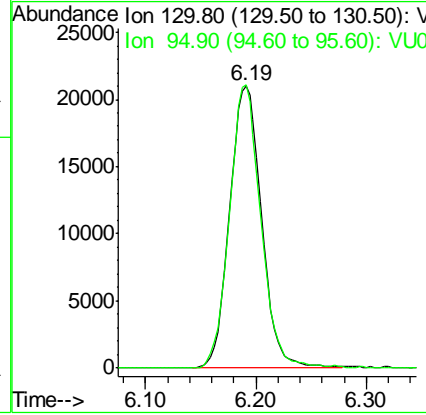
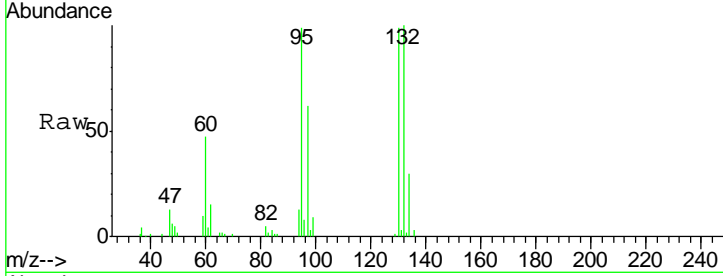




#44
 Trichloroethene
 Concen: 12.98 ug/l
 RT: 6.19 min Scan# 1742
 Delta R.T. 0.00 min
 Lab File: VU024963.D
 Acq: 27 Jun 2018 13:50

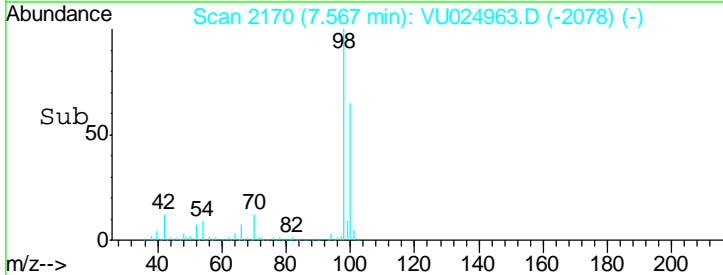
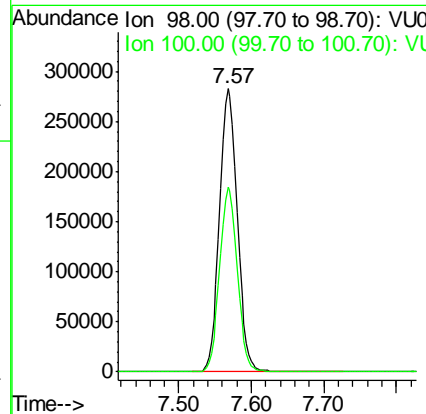
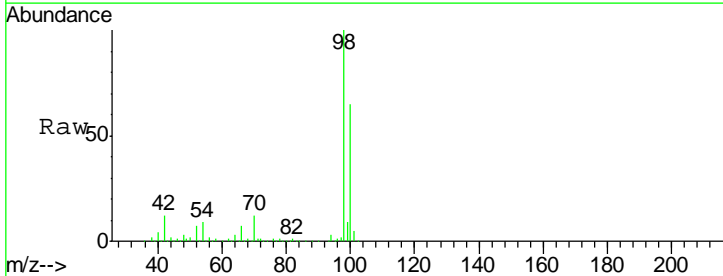
Instrument :
 MSVOA_U
ClientSampled :
 WP021SB475-27-29-180620MEDL

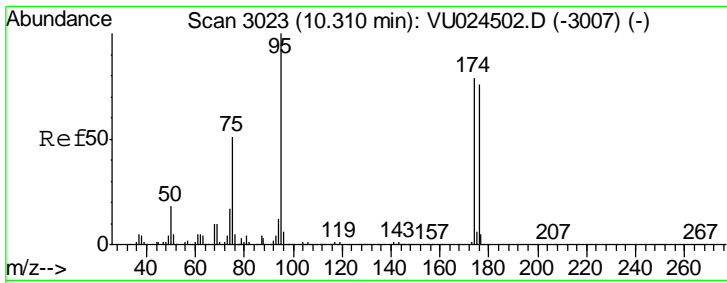
Tgt Ion	Resp	Lower	Upper
130	42146		
95	100.3	0.0	202.4



#50
 Toluene-d8
 Concen: 46.94 ug/l
 RT: 7.57 min Scan# 2170
 Delta R.T. -0.00 min
 Lab File: VU024963.D
 Acq: 27 Jun 2018 13:50

Tgt Ion	Resp	Lower	Upper
98	484086		
100	64.6	51.1	76.7

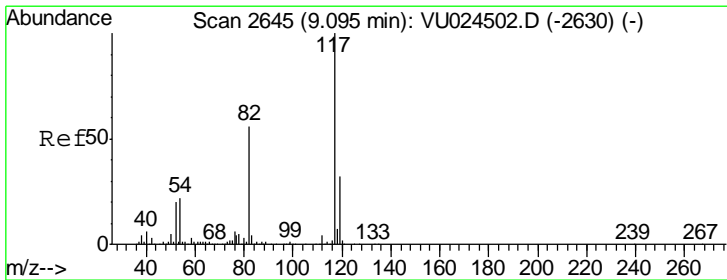
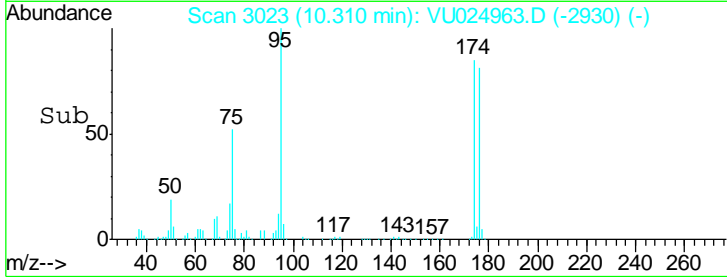
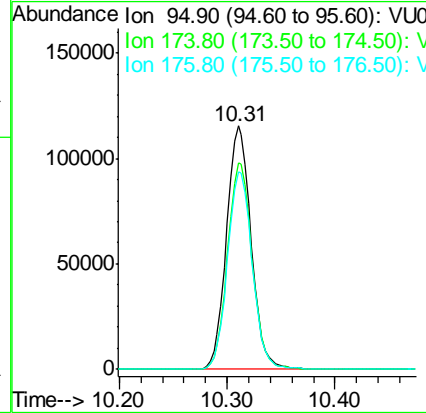
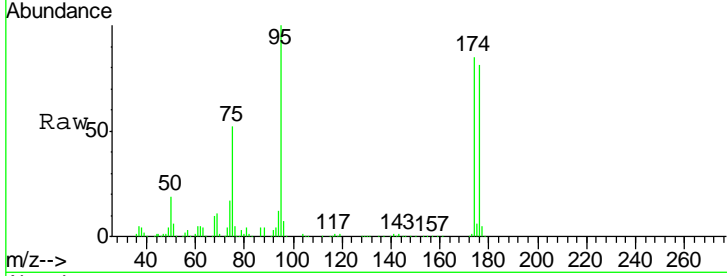




#62
 4-Bromofluorobenzene
 Concen: 44.76 ug/l
 RT: 10.31 min Scan# 3023
 Delta R.T. 0.00 min
 Lab File: VU024963.D
 Acq: 27 Jun 2018 13:50

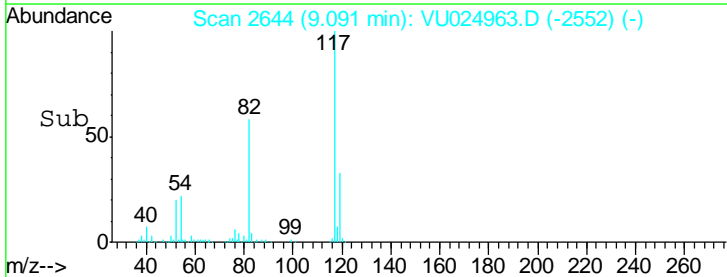
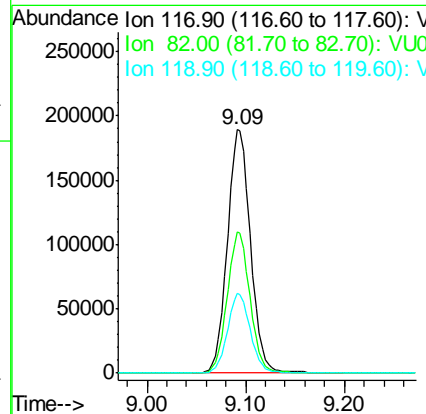
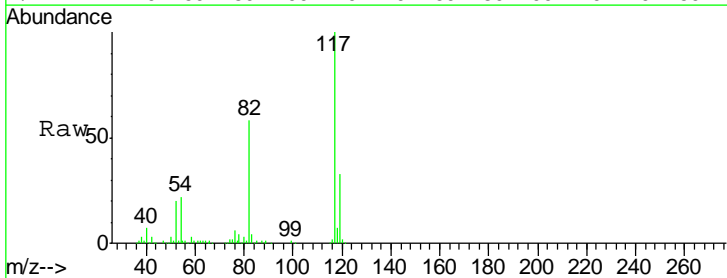
Instrument : MSVOA_U
 ClientSampled : WP021SB475-27-29-180620MEDL

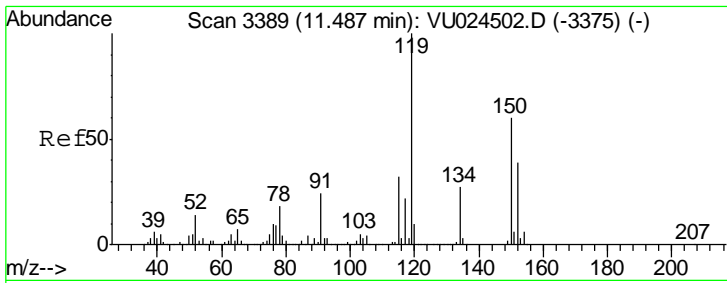
Tgt Ion	Resp	Lower	Upper
95	183287		
174	85.0	0.0	165.8
176	82.0	0.0	159.4



#63
 Chlorobenzene-d5
 Concen: 50.00 ug/l
 RT: 9.09 min Scan# 2644
 Delta R.T. -0.00 min
 Lab File: VU024963.D
 Acq: 27 Jun 2018 13:50

Tgt Ion	Resp	Lower	Upper
117	312212		
82	57.8	44.3	66.5
119	32.6	25.4	38.2





#72
 1,4-Dichlorobenzene-d4
 Concen: 50.00 ug/l
 RT: 11.49 min Scan# 3389
 Delta R.T. 0.00 min
 Lab File: VU024963.D
 Acq: 27 Jun 2018 13:50

Instrument : MSVOA_U
 ClientSampled : WP021SB475-27-29-180620MEDL

Tot Ion:152 Resp: 172198

Ion	Ratio	Lower	Upper
152	100		
115	58.2	43.0	129.0
150	157.1	0.0	354.0

