

Data Path : Z:\voasrv\HPCHEM1\MSVOA_U\Data\VU062722\
 Data File : VU049406.D
 Acq On : 27 Jun 2022 16:14
 Operator : SY/MD
 Sample : VU0627WBL01
 Misc : 5.0mL/MSVOA_U/WATER
 ALS Vial : 13 Sample Multiplier: 1

Instrument :
 MSVOA_U
 ClientSampleId :
 VU0627WBL01

Quant Time: Jun 27 19:05:33 2022
 Quant Method : Z:\voasrv\HPCHEM1\MSVOA_U\Method\82U062722W.M
 Quant Title : SW846 8260
 QLast Update : Mon Jun 27 14:37:12 2022
 Response via : Initial Calibration

Compound	R.T.	QIon	Response	Conc	Units	Dev(Min)

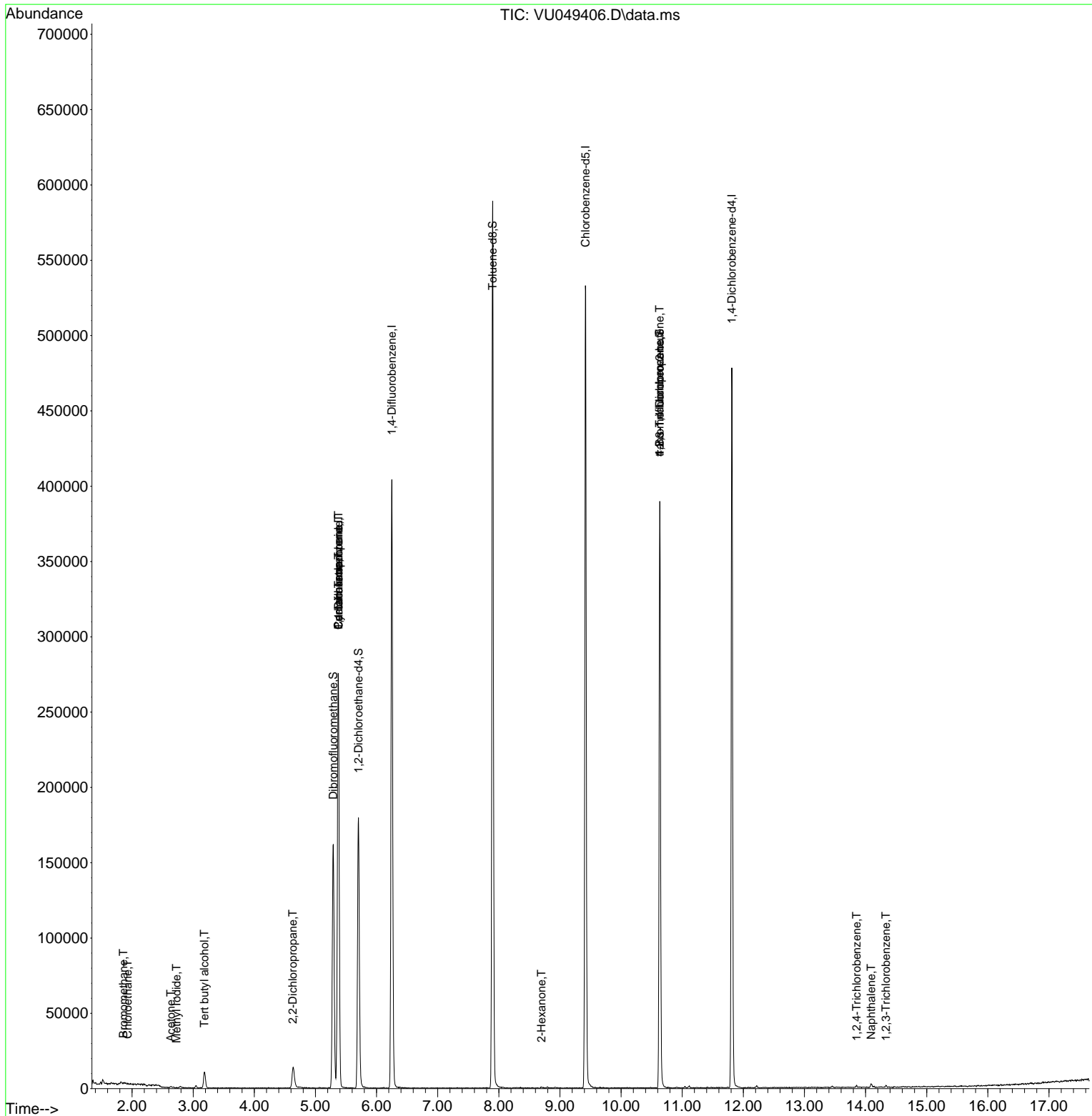
Internal Standards						
1) Pentafluorobenzene	5.375	168	182859	50.000	ug/l	# 0.00
34) 1,4-Difluorobenzene	6.250	114	317770	50.000	ug/l	0.00
63) Chlorobenzene-d5	9.420	117	283985	50.000	ug/l	0.00
72) 1,4-Dichlorobenzene-d4	11.812	152	124530	50.000	ug/l	0.00
System Monitoring Compounds						
33) 1,2-Dichloroethane-d4	5.703	65	136999	48.648	ug/l	0.00
Spiked Amount	50.000	Range 78 - 117	Recovery	=	97.300%	
35) Dibromofluoromethane	5.292	113	104393	46.956	ug/l	0.00
Spiked Amount	50.000	Range 75 - 124	Recovery	=	93.920%	
50) Toluene-d8	7.899	98	384879	48.537	ug/l	0.00
Spiked Amount	50.000	Range 92 - 112	Recovery	=	97.080%	
62) 4-Bromofluorobenzene	10.632	95	132433	43.599	ug/l	0.00
Spiked Amount	50.000	Range 83 - 123	Recovery	=	87.200%	
Target Compounds						
						Qvalue
5) Bromomethane	1.858	94	242	0.263	ug/l	# 4
6) Chloroethane	1.925	64	40	1.944	ug/l	# 44
10) Methyl Iodide	2.726	142	46	7.533	ug/l	# 43
11) Tert butyl alcohol	3.182	59	7181	10.894	ug/l	# 37
16) Acetone	2.636	43	1211	0.853	ug/l	92
20) Methylene Chloride	3.047	84	698	Below Cal		93
26) 2,2-Dichloropropane	4.629	77	841	0.230	ug/l	# 52
31) Cyclohexane	5.375	56	4272	1.010	ug/l	# 1
36) 1,1-Dichloropropene	5.375	75	15836	4.913	ug/l	# 49
38) Carbon Tetrachloride	5.375	117	19779	5.851	ug/l	# 16
59) 2-Hexanone	8.697	43	884	0.260	ug/l	# 42
76) 1,2,3-Trichloropropane	10.632	75	70321	16.658	ug/l	# 45
81) trans-1,4-Dichloro-2-b...	10.632	75	70321	61.516	ug/l	# 15
93) 1,2,4-Trichlorobenzene	13.851	180	591	1.958	ug/l	93
95) Naphthalene	14.092	128	3067	2.040	ug/l	# 85
96) 1,2,3-Trichlorobenzene	14.333	180	552	1.365	ug/l	# 45

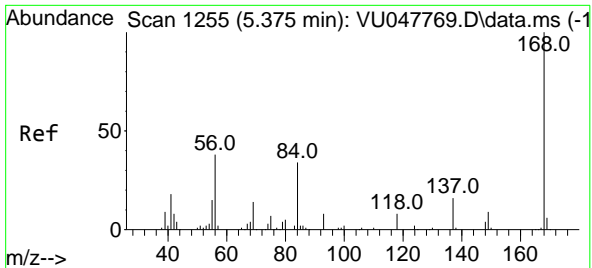
(#) = qualifier out of range (m) = manual integration (+) = signals summed

Data Path : Z:\voasrv\HPCHEM1\MSVOA_U\Data\VU062722\
 Data File : VU049406.D
 Acq On : 27 Jun 2022 16:14
 Operator : SY/MD
 Sample : VU0627WBL01
 Misc : 5.0mL/MSVOA_U/WATER
 ALS Vial : 13 Sample Multiplier: 1

Instrument :
 MSVOA_U
 ClientSampleId :
 VU0627WBL01

Quant Time: Jun 27 19:05:33 2022
 Quant Method : Z:\voasrv\HPCHEM1\MSVOA_U\Method\82U062722W.M
 Quant Title : SW846 8260
 QLast Update : Mon Jun 27 14:37:12 2022
 Response via : Initial Calibration

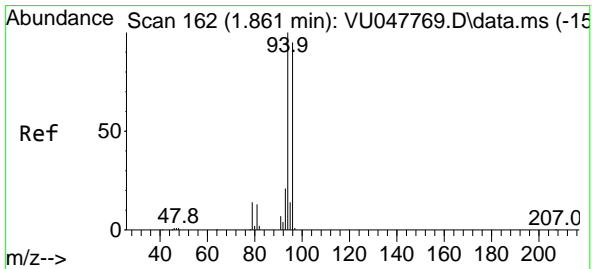
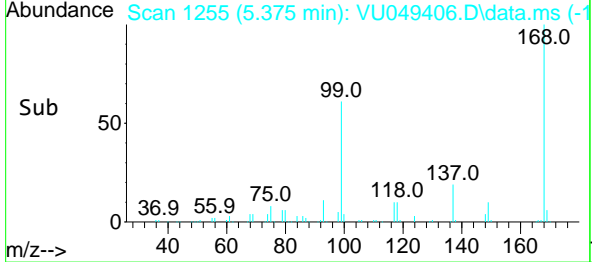
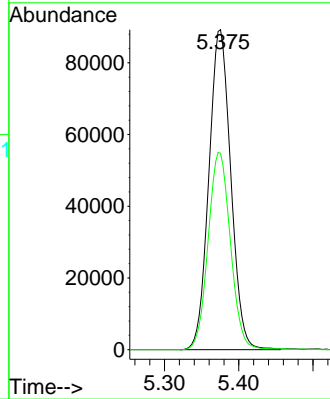
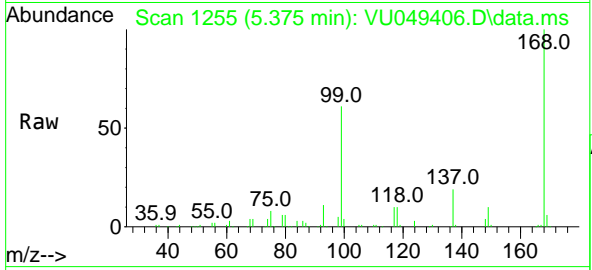




#1
 Pentafluorobenzene
 Concen: 50.000 ug/l
 RT: 5.375 min Scan# 11
 Delta R.T. 0.000 min
 Lab File: VU049406.D
 Acq: 27 Jun 2022 16:14

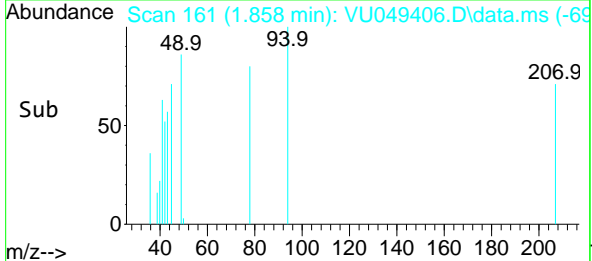
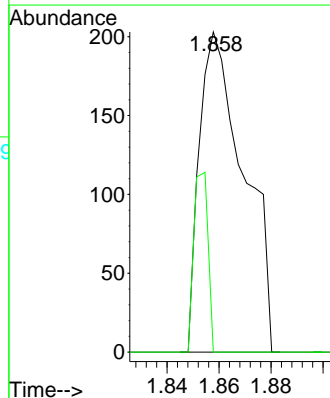
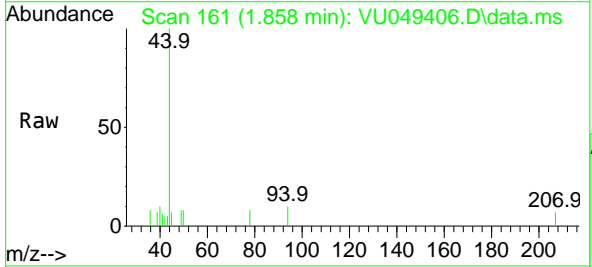
Instrument :
 MSVOA_U
 ClientSampleId :
 VU0627WBL01

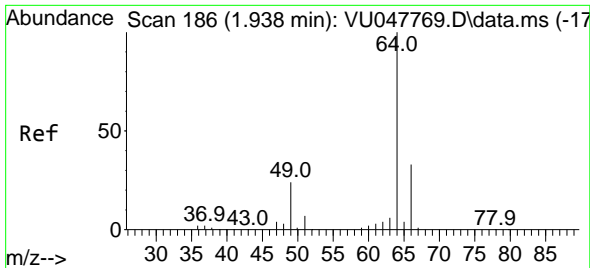
Tgt Ion:168 Resp: 182859
 Ion Ratio Lower Upper
 168 100
 99 61.3 39.3 58.9#



#5
 Bromomethane
 Concen: 0.263 ug/l
 RT: 1.858 min Scan# 161
 Delta R.T. -0.003 min
 Lab File: VU049406.D
 Acq: 27 Jun 2022 16:14

Tgt Ion: 94 Resp: 242
 Ion Ratio Lower Upper
 94 100
 96 0.0 73.7 110.5#

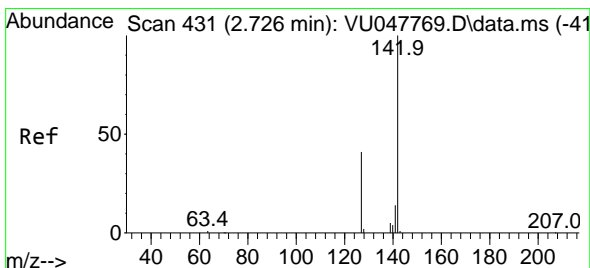
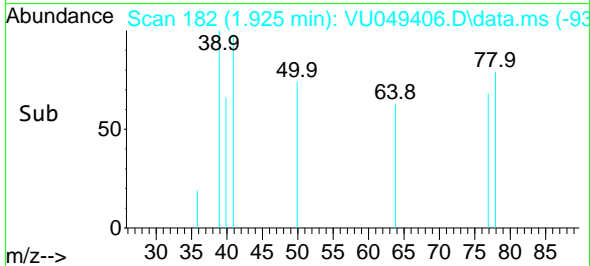
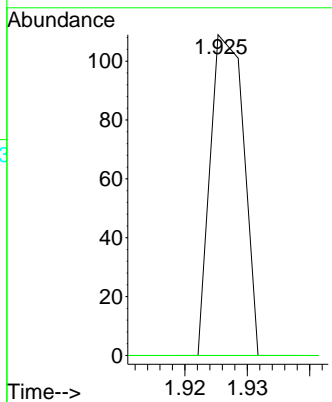
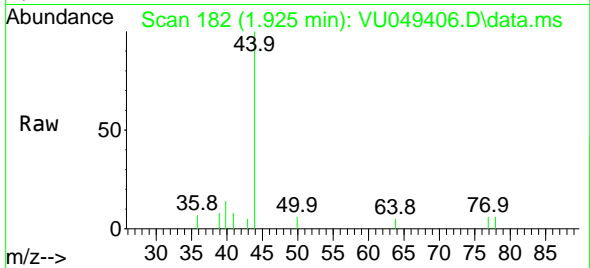




#6
 Chloroethane
 Concen: 1.944 ug/l
 RT: 1.925 min Scan# 182
 Delta R.T. -0.013 min
 Lab File: VU049406.D
 Acq: 27 Jun 2022 16:14

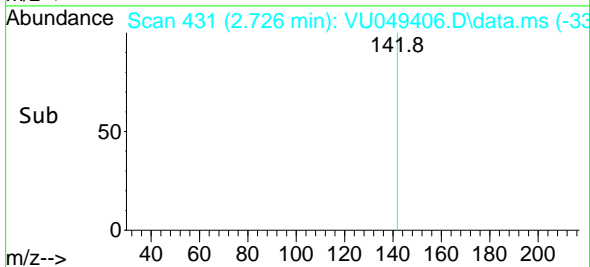
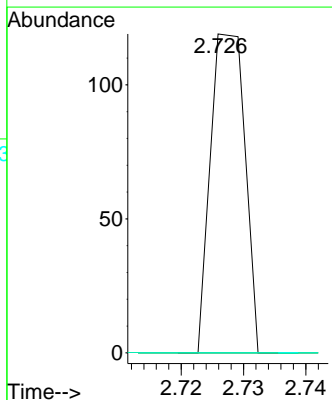
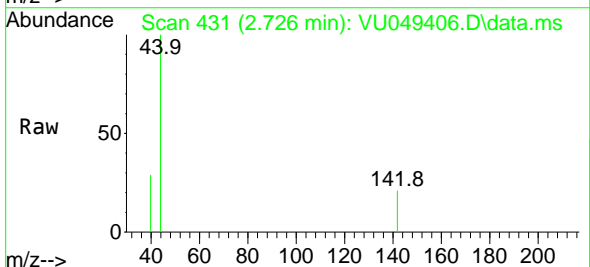
Instrument :
 MSVOA_U
 ClientSampleId :
 VU0627WBL01

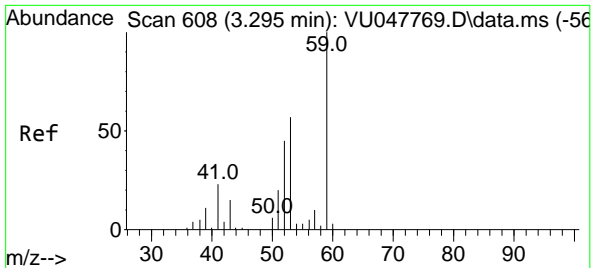
Tgt Ion: 64 Resp: 40
 Ion Ratio Lower Upper
 64 100
 66 0.0 24.7 37.1#



#10
 Methyl Iodide
 Concen: 7.533 ug/l
 RT: 2.726 min Scan# 431
 Delta R.T. -0.000 min
 Lab File: VU049406.D
 Acq: 27 Jun 2022 16:14

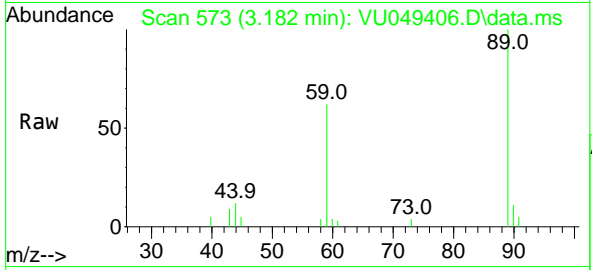
Tgt Ion: 142 Resp: 46
 Ion Ratio Lower Upper
 142 100
 127 0.0 32.5 48.7#
 141 0.0 11.4 17.0#



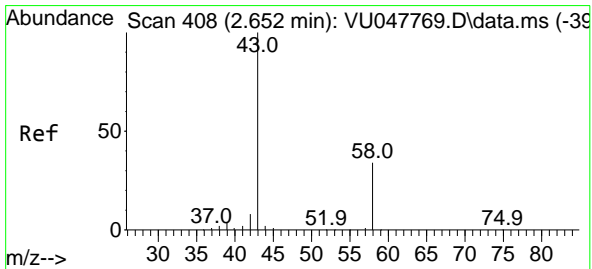
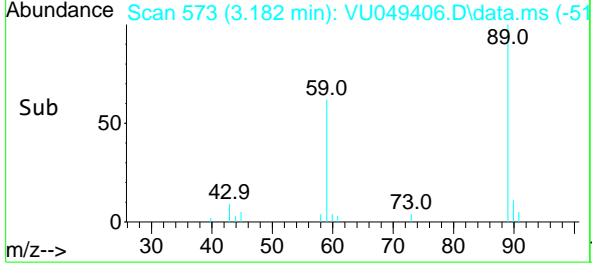
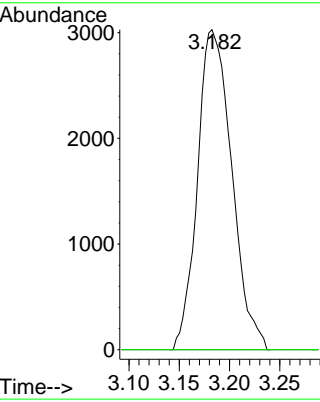


#11
 Tert butyl alcohol
 Concen: 10.894 ug/l
 RT: 3.182 min Scan# 51
 Delta R.T. -0.113 min
 Lab File: VU049406.D
 Acq: 27 Jun 2022 16:14

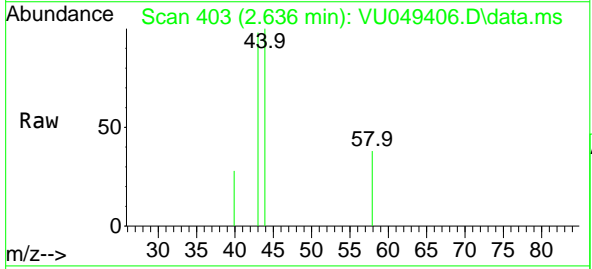
Instrument : MSVOA_U
 ClientSampleId : VU0627WBL01



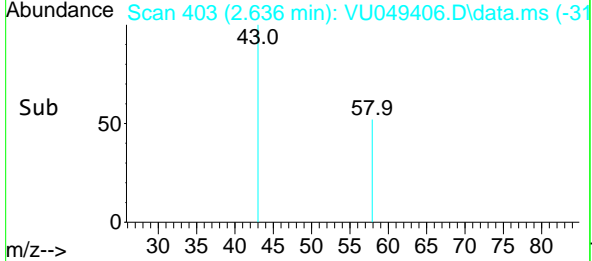
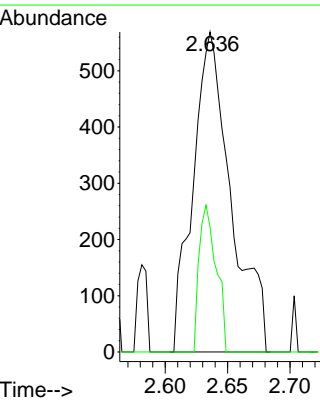
Tgt Ion: 59 Resp: 7181
 Ion Ratio Lower Upper
 59 100
 57 0.0 30.6 45.8#

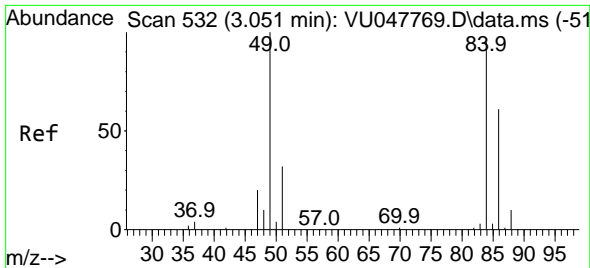


#16
 Acetone
 Concen: 0.853 ug/l
 RT: 2.636 min Scan# 403
 Delta R.T. -0.016 min
 Lab File: VU049406.D
 Acq: 27 Jun 2022 16:14



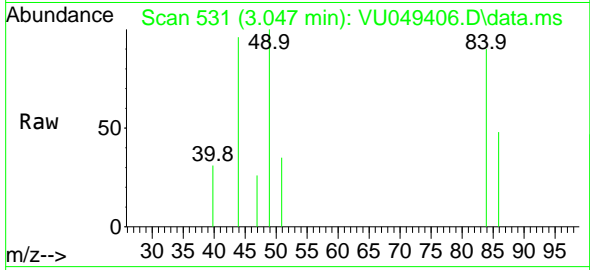
Tgt Ion: 43 Resp: 1211
 Ion Ratio Lower Upper
 43 100
 58 39.0 27.5 41.3





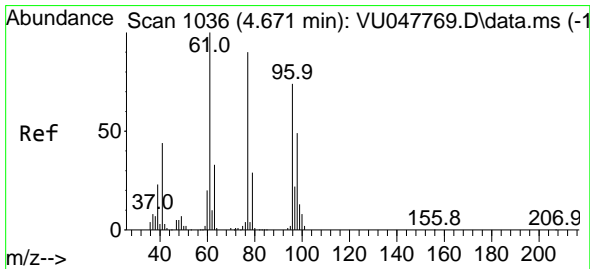
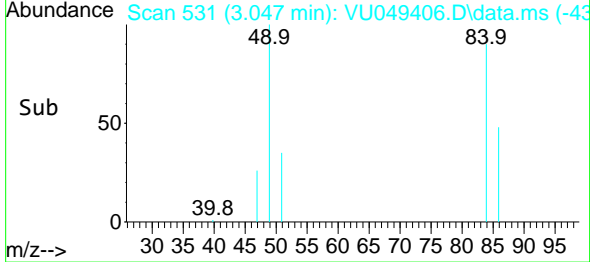
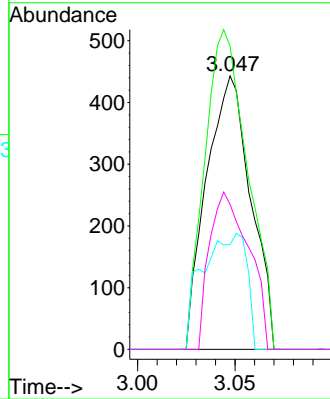
#20
 Methylene Chloride
 Concen: Below Cal
 RT: 3.047 min Scan# 51
 Delta R.T. -0.004 min
 Lab File: VU049406.D
 Acq: 27 Jun 2022 16:14

Instrument : MSVOA_U
 ClientSampleId : VU0627WBL01



Tgt Ion: 84 Resp: 698

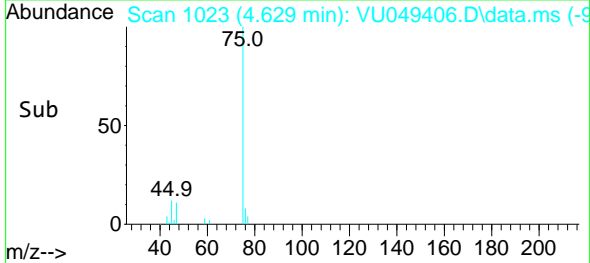
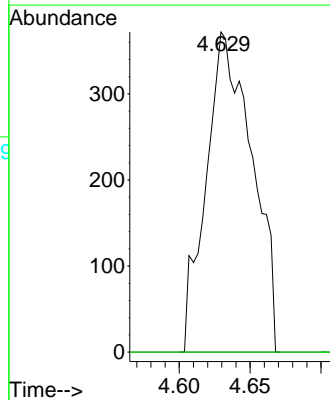
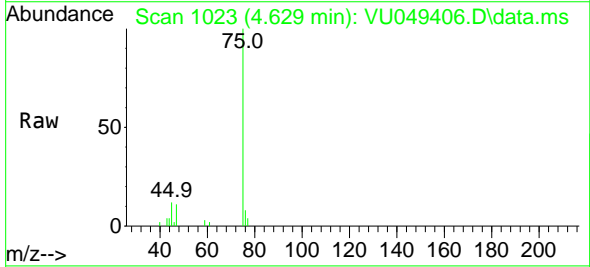
Ion	Ratio	Lower	Upper
84	100		
49	110.8	86.6	129.8
51	38.4	26.6	40.0
86	53.0	50.6	75.8

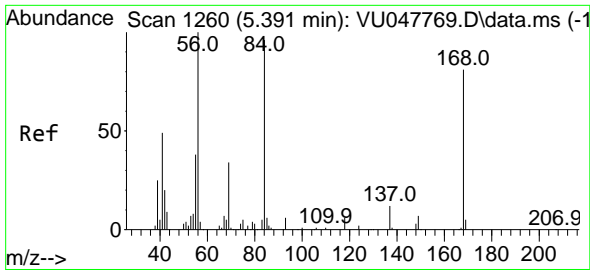


#26
 2,2-Dichloropropane
 Concen: 0.230 ug/l
 RT: 4.629 min Scan# 1023
 Delta R.T. -0.042 min
 Lab File: VU049406.D
 Acq: 27 Jun 2022 16:14

Tgt Ion: 77 Resp: 841

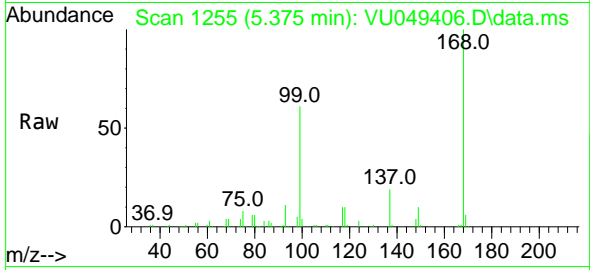
Ion	Ratio	Lower	Upper
77	100		
97	0.0	11.6	34.8



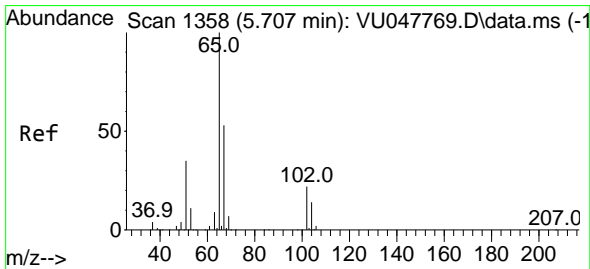
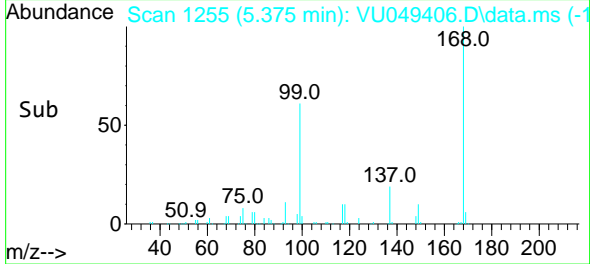
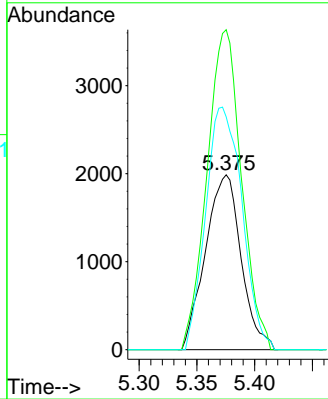


#31
 Cyclohexane
 Concen: 1.010 ug/l
 RT: 5.375 min Scan# 111
 Delta R.T. -0.016 min
 Lab File: VU049406.D
 Acq: 27 Jun 2022 16:14

Instrument :
 MSVOA_U
 ClientSampleId :
 VU0627WBL01

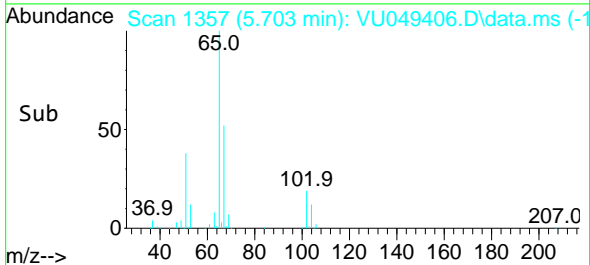
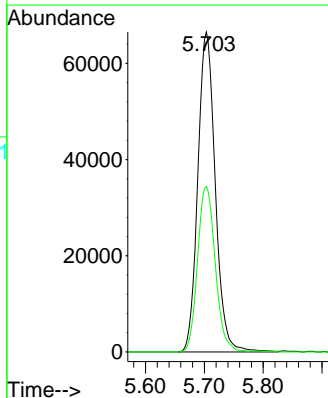
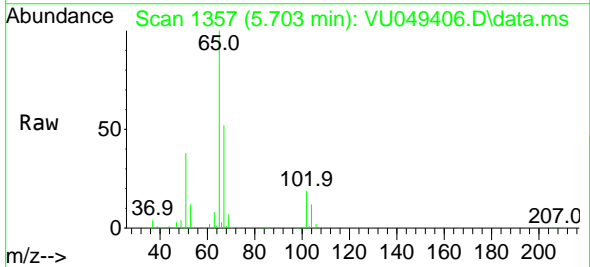


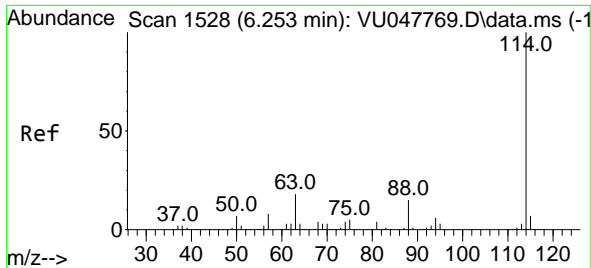
Tgt Ion: 56 Resp: 4272
 Ion Ratio Lower Upper
 56 100
 69 183.0 27.8 41.8#
 84 133.2 74.2 111.4#



#33
 1,2-Dichloroethane-d4
 Concen: 48.648 ug/l
 RT: 5.703 min Scan# 1357
 Delta R.T. -0.003 min
 Lab File: VU049406.D
 Acq: 27 Jun 2022 16:14

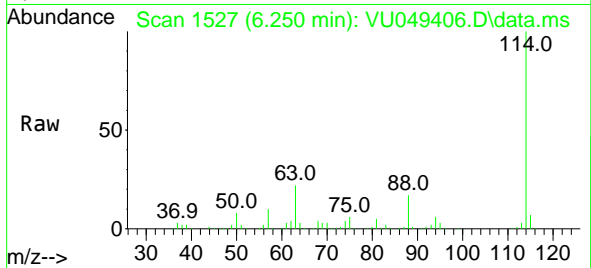
Tgt Ion: 65 Resp: 136999
 Ion Ratio Lower Upper
 65 100
 67 52.5 0.0 108.0



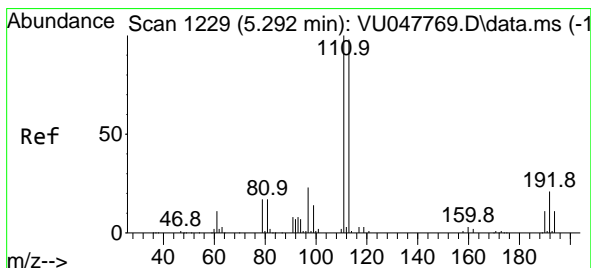
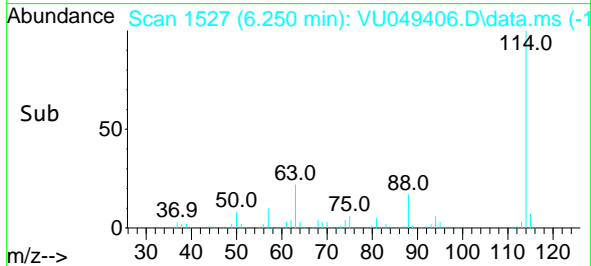
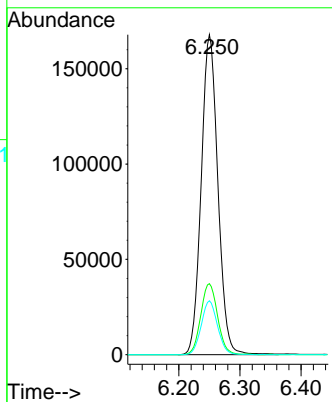


#34
 1,4-Difluorobenzene
 Concen: 50.000 ug/l
 RT: 6.250 min Scan# 11
 Delta R.T. -0.003 min
 Lab File: VU049406.D
 Acq: 27 Jun 2022 16:14

Instrument :
 MSVOA_U
 ClientSampleId :
 VU0627WBL01

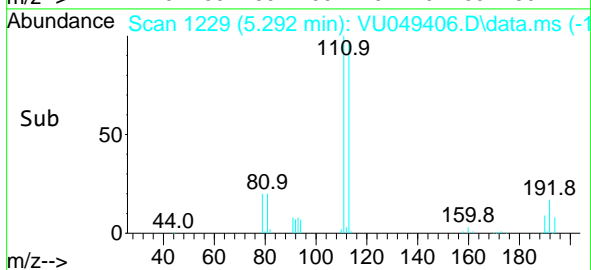
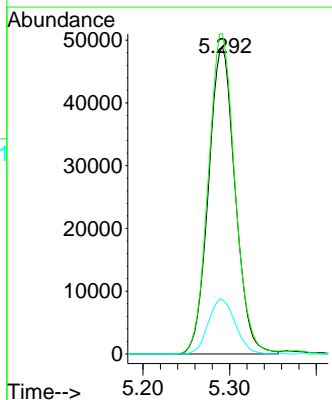
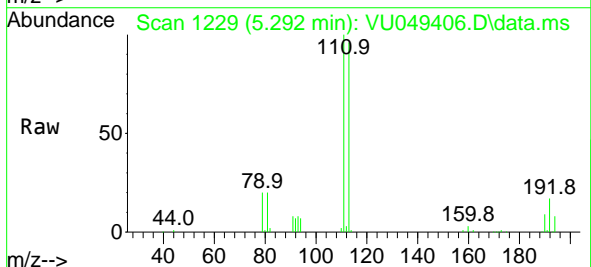


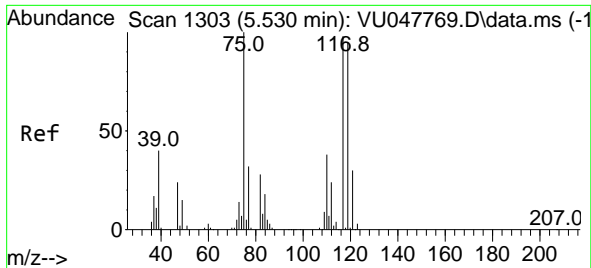
Tgt Ion:114 Resp: 317770
 Ion Ratio Lower Upper
 114 100
 63 22.2 0.0 37.8
 88 16.9 0.0 29.2



#35
 Dibromofluoromethane
 Concen: 46.956 ug/l
 RT: 5.292 min Scan# 1229
 Delta R.T. -0.000 min
 Lab File: VU049406.D
 Acq: 27 Jun 2022 16:14

Tgt Ion:113 Resp: 104393
 Ion Ratio Lower Upper
 113 100
 111 104.5 82.1 123.1
 192 18.0 18.0 27.0

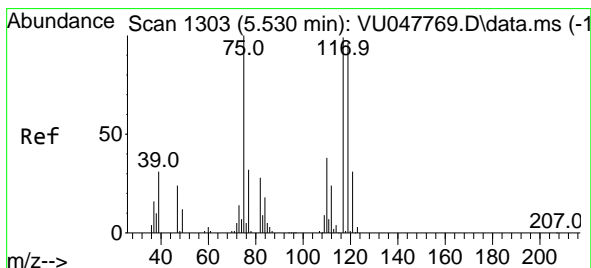
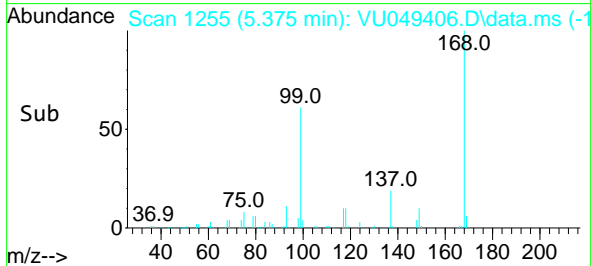
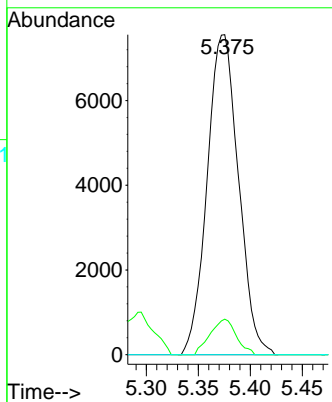
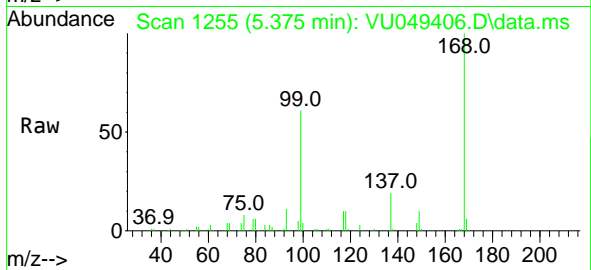




#36
 1,1-Dichloropropene
 Concen: 4.913 ug/l
 RT: 5.375 min Scan# 11
 Delta R.T. -0.154 min
 Lab File: VU049406.D
 Acq: 27 Jun 2022 16:14

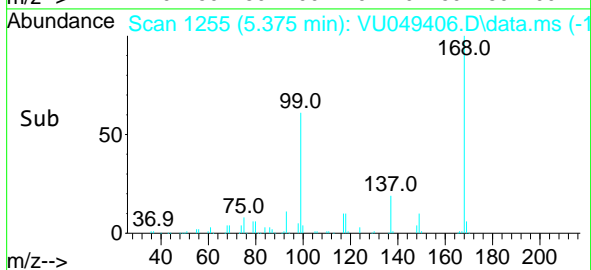
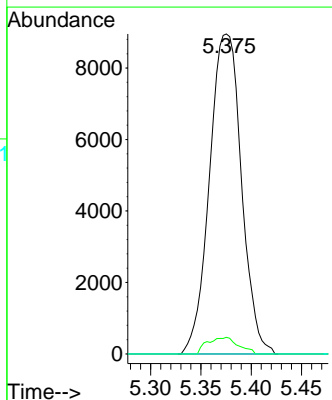
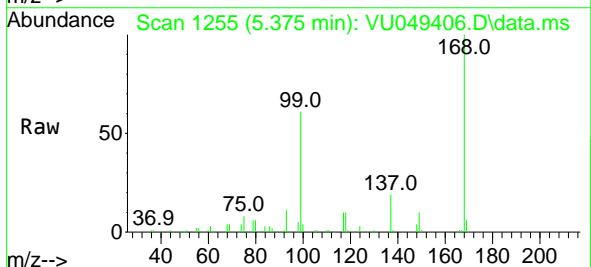
Instrument : MSVOA_U
 ClientSampleId : VU0627WBL01

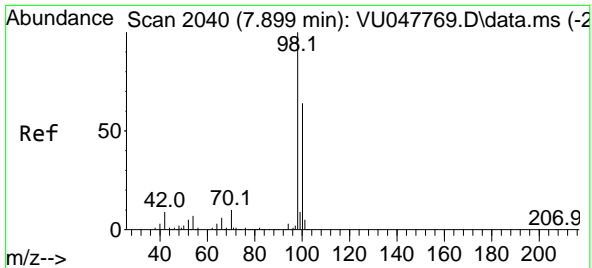
Tgt Ion: 75 Resp: 15836
 Ion Ratio Lower Upper
 75 100
 110 9.3 18.4 55.2#
 77 0.0 25.1 37.7#



#38
 Carbon Tetrachloride
 Concen: 5.851 ug/l
 RT: 5.375 min Scan# 1255
 Delta R.T. -0.154 min
 Lab File: VU049406.D
 Acq: 27 Jun 2022 16:14

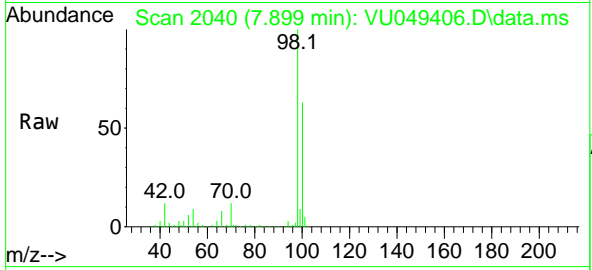
Tgt Ion:117 Resp: 19779
 Ion Ratio Lower Upper
 117 100
 119 5.2 76.8 115.2#
 121 0.0 24.7 37.1#



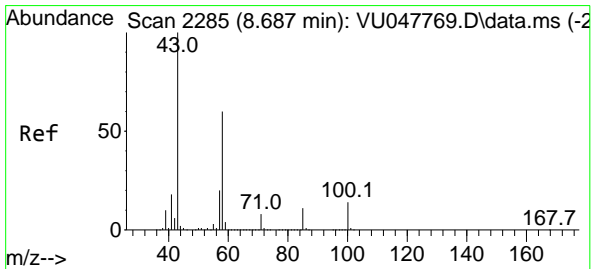
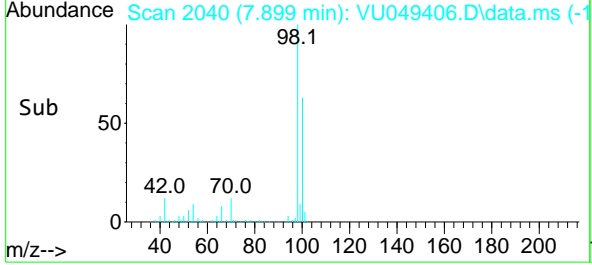
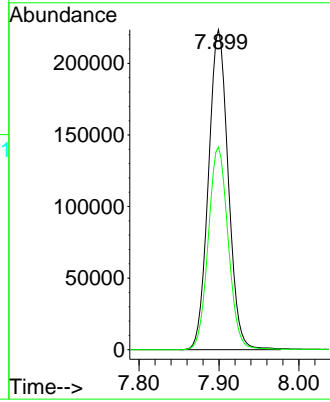


#50
 Toluene-d8
 Concen: 48.537 ug/l
 RT: 7.899 min Scan# 2040
 Delta R.T. -0.000 min
 Lab File: VU049406.D
 Acq: 27 Jun 2022 16:14

Instrument : MSVOA_U
 ClientSampleId : VU0627WBL01

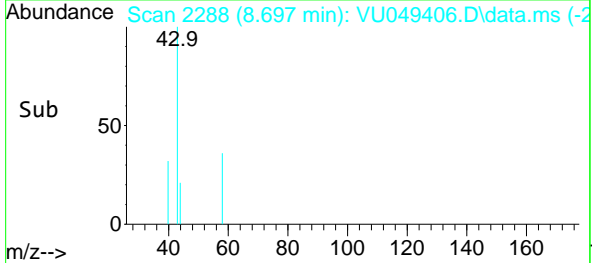
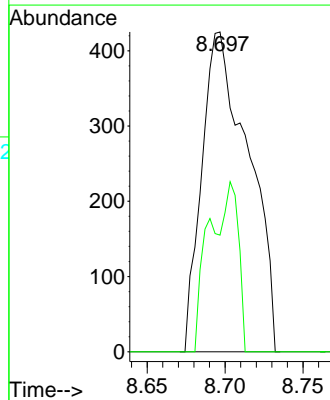
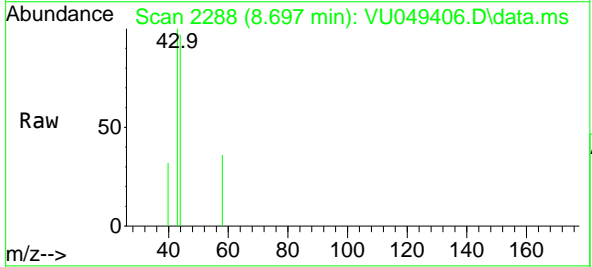


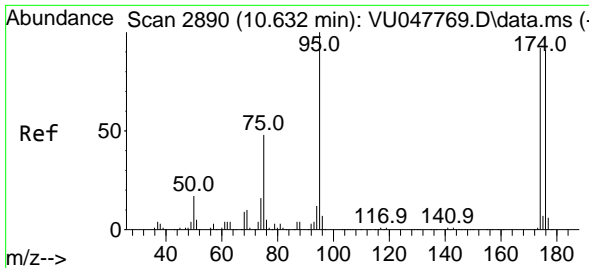
Tgt Ion: 98 Resp: 384879
 Ion Ratio Lower Upper
 98 100
 100 63.8 51.7 77.5



#59
 2-Hexanone
 Concen: 0.260 ug/l
 RT: 8.697 min Scan# 2288
 Delta R.T. 0.010 min
 Lab File: VU049406.D
 Acq: 27 Jun 2022 16:14

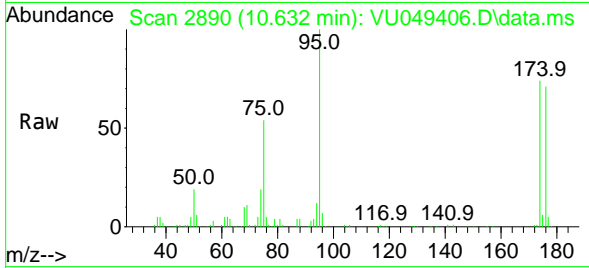
Tgt Ion: 43 Resp: 884
 Ion Ratio Lower Upper
 43 100
 58 16.4 30.3 90.8#



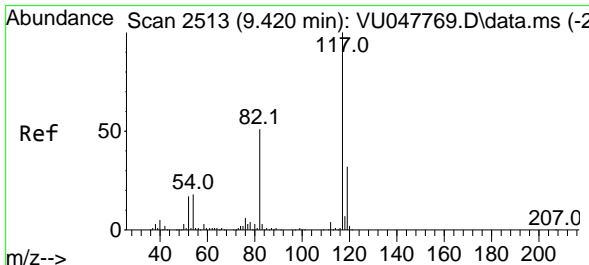
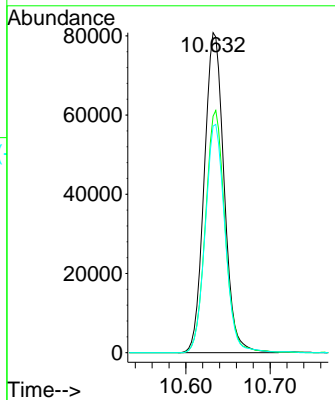
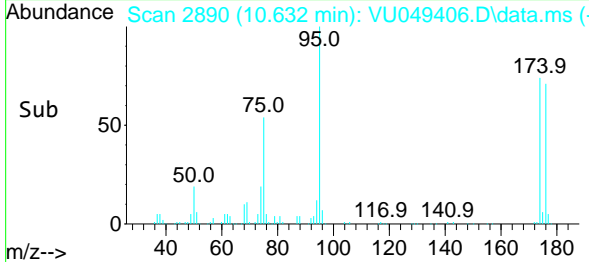


#62
 4-Bromofluorobenzene
 Concen: 43.599 ug/l
 RT: 10.632 min Scan# 2890
 Delta R.T. -0.000 min
 Lab File: VU049406.D
 Acq: 27 Jun 2022 16:14

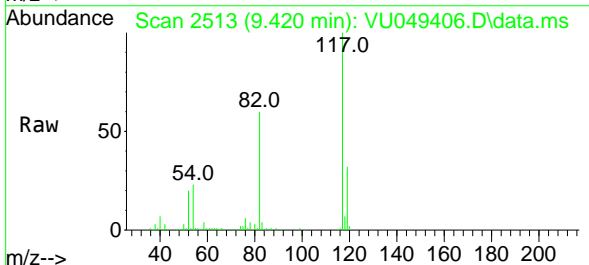
Instrument :
 MSVOA_U
 ClientSampleId :
 VU0627WBL01



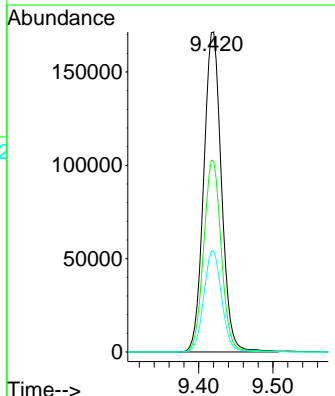
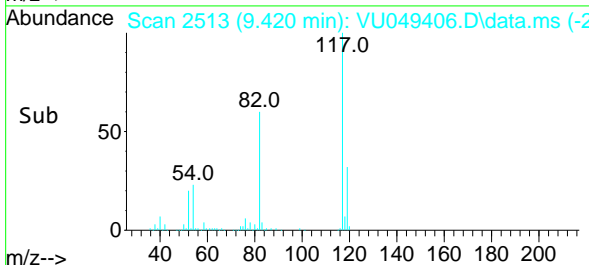
Tgt Ion: 95 Resp: 132433
 Ion Ratio Lower Upper
 95 100
 174 74.4 0.0 182.0
 176 71.1 0.0 177.8

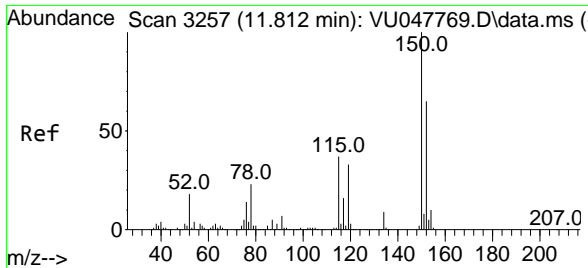


#63
 Chlorobenzene-d5
 Concen: 50.000 ug/l
 RT: 9.420 min Scan# 2513
 Delta R.T. -0.000 min
 Lab File: VU049406.D
 Acq: 27 Jun 2022 16:14



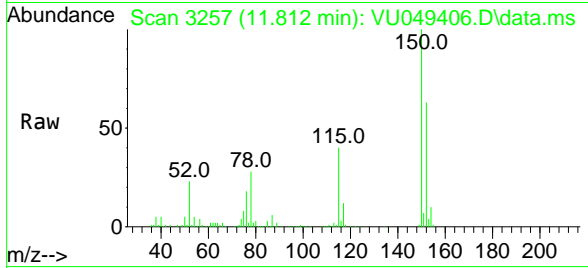
Tgt Ion: 117 Resp: 283985
 Ion Ratio Lower Upper
 117 100
 82 59.6 41.7 62.5
 119 31.6 25.7 38.5



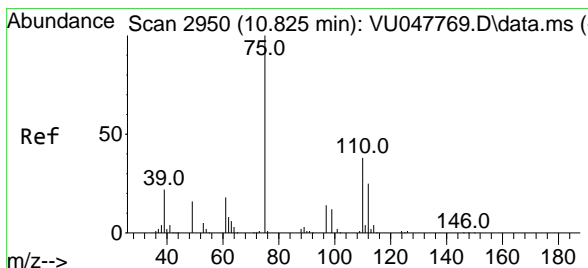
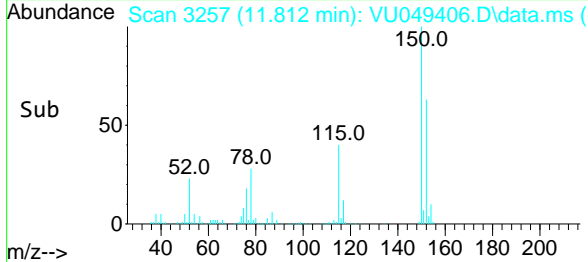
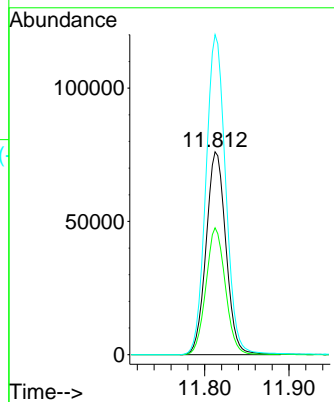


#72
 1,4-Dichlorobenzene-d4
 Concen: 50.000 ug/l
 RT: 11.812 min Scan# 31
 Delta R.T. -0.000 min
 Lab File: VU049406.D
 Acq: 27 Jun 2022 16:14

Instrument :
 MSVOA_U
 ClientSampleId :
 VU0627WBL01

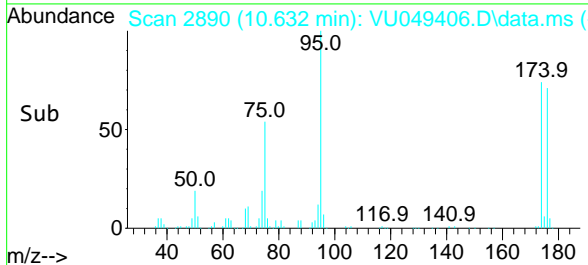
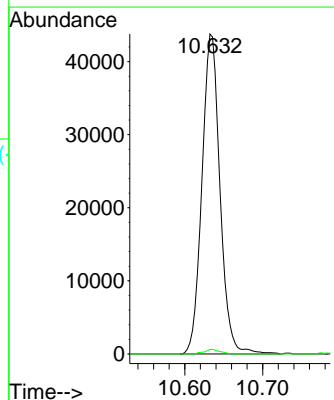
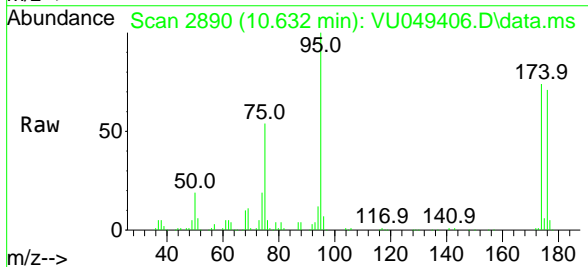


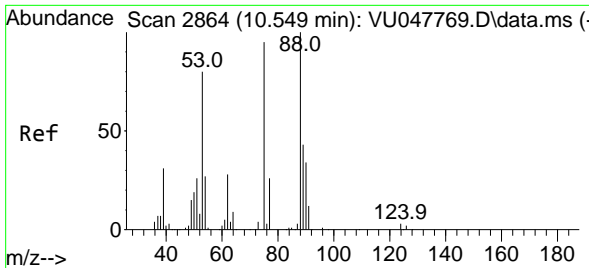
Tgt Ion:152 Resp: 124530
 Ion Ratio Lower Upper
 152 100
 115 61.4 37.0 110.9
 150 157.9 0.0 342.2



#76
 1,2,3-Trichloropropane
 Concen: 16.658 ug/l
 RT: 10.632 min Scan# 2890
 Delta R.T. -0.193 min
 Lab File: VU049406.D
 Acq: 27 Jun 2022 16:14

Tgt Ion: 75 Resp: 70321
 Ion Ratio Lower Upper
 75 100
 77 1.2 15.8 47.3#

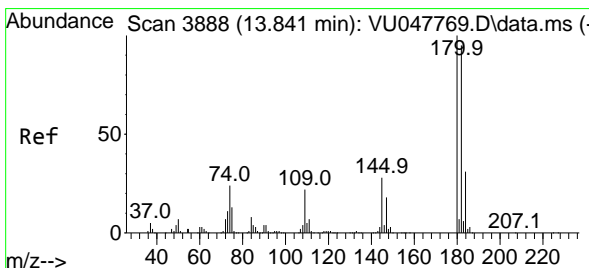
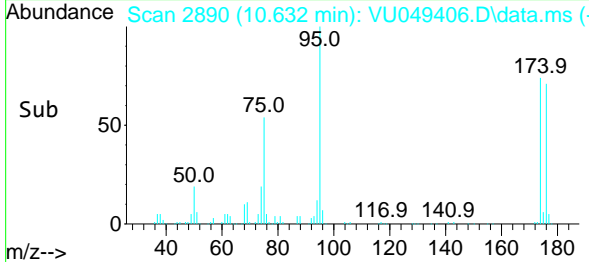
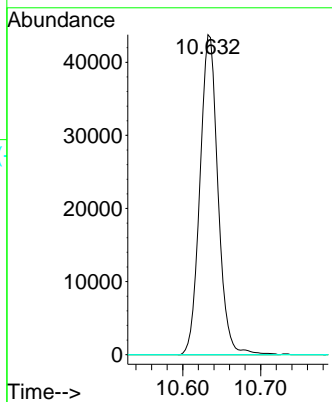
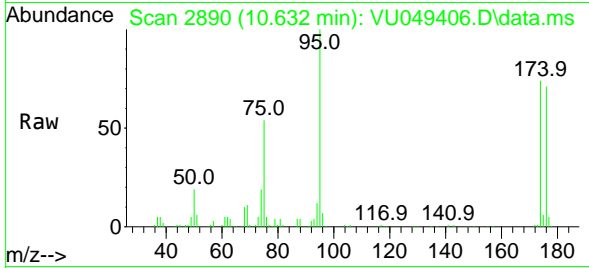




#81
 trans-1,4-Dichloro-2-butene
 Concen: 61.516 ug/l
 RT: 10.632 min Scan# 21
 Delta R.T. 0.084 min
 Lab File: VU049406.D
 Acq: 27 Jun 2022 16:14

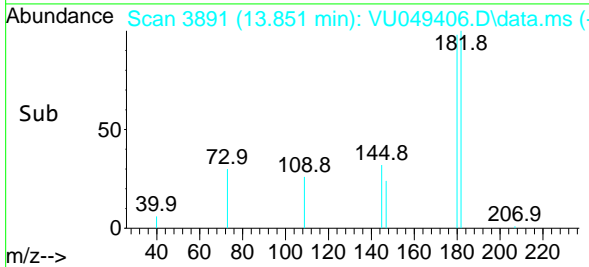
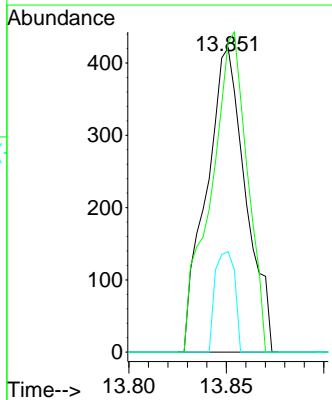
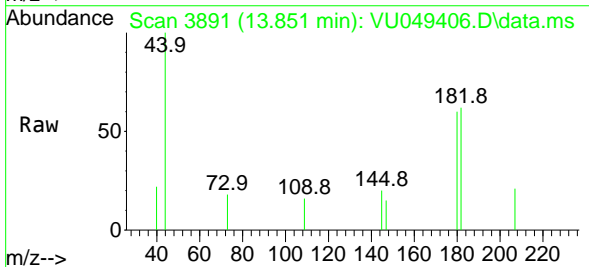
Instrument : MSVOA_U
 ClientSampleId : VU0627WBL01

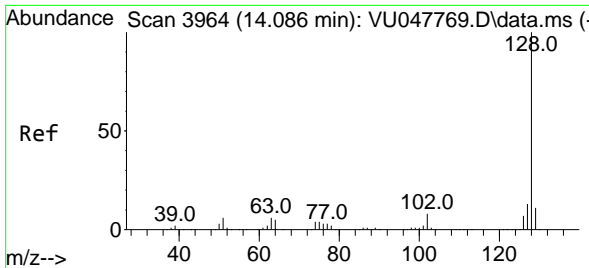
Tgt Ion: 75 Resp: 70321
 Ion Ratio Lower Upper
 75 100
 53 0.0 69.2 103.8#
 89 0.0 37.0 55.6#



#93
 1,2,4-Trichlorobenzene
 Concen: 1.958 ug/l
 RT: 13.851 min Scan# 3891
 Delta R.T. 0.010 min
 Lab File: VU049406.D
 Acq: 27 Jun 2022 16:14

Tgt Ion:180 Resp: 591
 Ion Ratio Lower Upper
 180 100
 182 97.8 47.9 143.6
 145 16.4 14.0 41.9



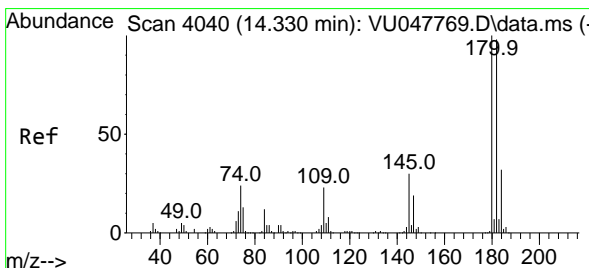
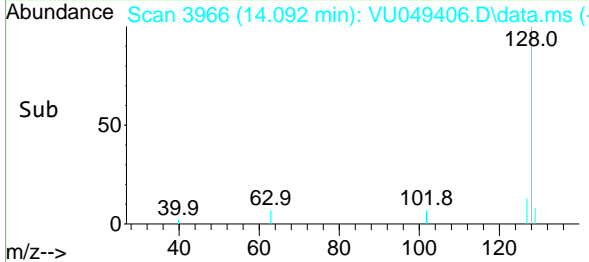
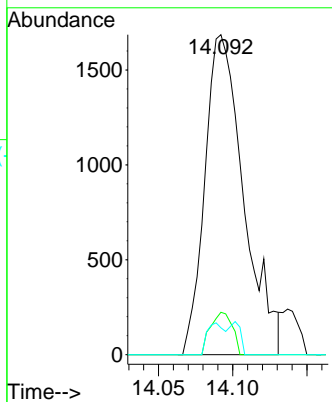
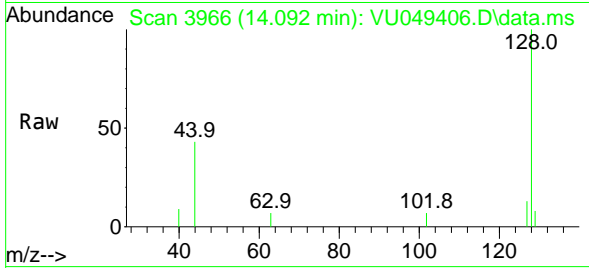


#95
 Naphthalene
 Concen: 2.040 ug/l
 RT: 14.092 min Scan# 3966
 Delta R.T. 0.006 min
 Lab File: VU049406.D
 Acq: 27 Jun 2022 16:14

Instrument : MSVOA_U
 ClientSampleId : VU0627WBL01

Tgt Ion:128 Resp: 3067

Ion	Ratio	Lower	Upper
128	100		
127	7.5	10.3	15.5#
129	4.4	8.6	13.0#



#96
 1,2,3-Trichlorobenzene
 Concen: 1.365 ug/l
 RT: 14.333 min Scan# 4041
 Delta R.T. 0.003 min
 Lab File: VU049406.D
 Acq: 27 Jun 2022 16:14

Tgt Ion:180 Resp: 552

Ion	Ratio	Lower	Upper
180	100		
182	42.9	48.4	145.0#
145	0.0	14.8	44.4#

