

Data Path : Z:\voasrv\HPCHEM1\MSVOA\_U\Data\VU062722\  
 Data File : VU049413.D  
 Acq On : 27 Jun 2022 19:05  
 Operator : SY/MD  
 Sample : N3334-01DL 10X  
 Misc : 5.34g/5.0mL/100uL/5.0mL/MSVOA\_U/MEOH  
 ALS Vial : 19 Sample Multiplier: 1

Instrument :  
 MSVOA\_U  
 ClientSampleId :  
 WC-14A-1A-7DL

Quant Time: Jun 28 05:26:23 2022  
 Quant Method : Z:\voasrv\HPCHEM1\MSVOA\_U\Method\82U062722W.M  
 Quant Title : SW846 8260  
 QLast Update : Tue Jun 28 05:14:22 2022  
 Response via : Initial Calibration

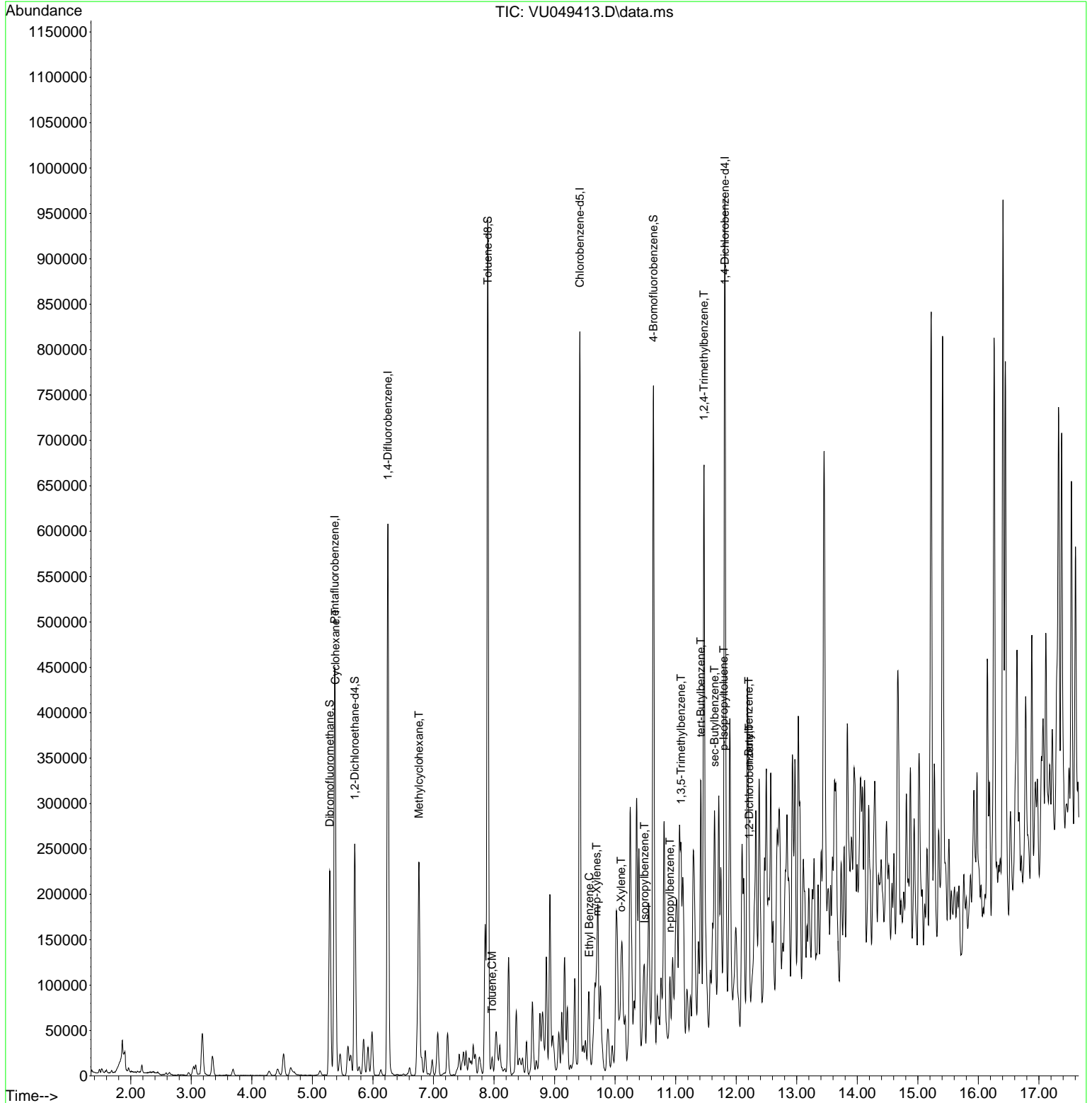
Compound	R.T.	QIon	Response	Conc	Units	Dev(Min)
-----						
Internal Standards						
1) Pentafluorobenzene	5.369	168	279768	50.000	ug/l	# 0.00
34) 1,4-Difluorobenzene	6.247	114	485690	50.000	ug/l	0.00
63) Chlorobenzene-d5	9.417	117	436236	50.000	ug/l	0.00
72) 1,4-Dichlorobenzene-d4	11.813	152	220512	50.000	ug/l	0.00
System Monitoring Compounds						
33) 1,2-Dichloroethane-d4	5.700	65	188934	43.850	ug/l	0.00
Spiked Amount	50.000	Range 78 - 117	Recovery =	87.700%		
35) Dibromofluoromethane	5.285	113	146902	43.232	ug/l	0.00
Spiked Amount	50.000	Range 75 - 124	Recovery =	86.460%		
50) Toluene-d8	7.896	98	589051	48.602	ug/l	0.00
Spiked Amount	50.000	Range 92 - 112	Recovery =	97.200%		
62) 4-Bromofluorobenzene	10.633	95	227017	48.898	ug/l	0.00
Spiked Amount	50.000	Range 83 - 123	Recovery =	97.800%		
Target Compounds						
						Qvalue
31) Cyclohexane	5.379	56	31322	4.842	ug/l	# 90
39) Methylcyclohexane	6.761	83	101125	17.123	ug/l	91
52) Toluene	7.967	92	6370	0.720	ug/l	90
67) Ethyl Benzene	9.571	91	24858	1.518	ug/l	92
68) m/p-Xylenes	9.694	106	18273	3.016	ug/l	92
69) o-Xylene	10.099	106	23797	3.957	ug/l	92
73) Isopropylbenzene	10.485	105	45832	2.918	ug/l	97
78) n-propylbenzene	10.906	91	54223	2.841	ug/l	97
80) 1,3,5-Trimethylbenzene	11.089	105	86411	6.301	ug/l	94
83) tert-Butylbenzene	11.417	119	4906	0.364	ug/l	87
84) 1,2,4-Trimethylbenzene	11.469	105	297882	22.111	ug/l	94
85) sec-Butylbenzene	11.642	105	61142	3.605	ug/l	97
86) p-Isopropyltoluene	11.793	119	39670	2.893	ug/l	95
89) n-Butylbenzene	12.205	91	60370	4.755	ug/l	# 53
91) 1,2-Dichlorobenzene	12.214	146	4980	0.676	ug/l	94
-----						

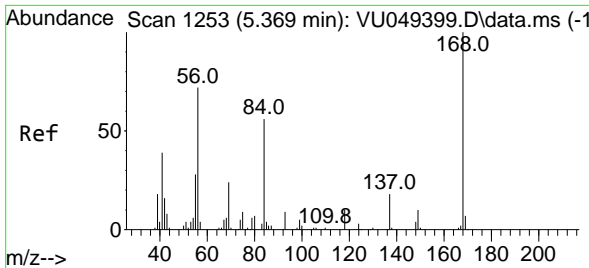
(#) = qualifier out of range (m) = manual integration (+) = signals summed

Data Path : Z:\voasrv\HPCHEM1\MSVOA\_U\Data\VU062722\  
 Data File : VU049413.D  
 Acq On : 27 Jun 2022 19:05  
 Operator : SY/MD  
 Sample : N3334-01DL 10X  
 Misc : 5.34g/5.0mL/100uL/5.0mL/MSVOA\_U/MEOH  
 ALS Vial : 19 Sample Multiplier: 1

Instrument :  
 MSVOA\_U  
 ClientSampleId :  
 WC-14A-1A-7DL

Quant Time: Jun 28 05:26:23 2022  
 Quant Method : Z:\voasrv\HPCHEM1\MSVOA\_U\Method\82U062722W.M  
 Quant Title : SW846 8260  
 QLast Update : Tue Jun 28 05:14:22 2022  
 Response via : Initial Calibration

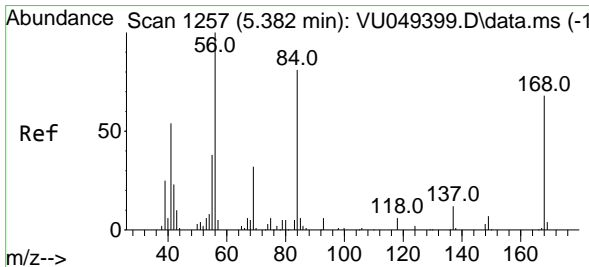
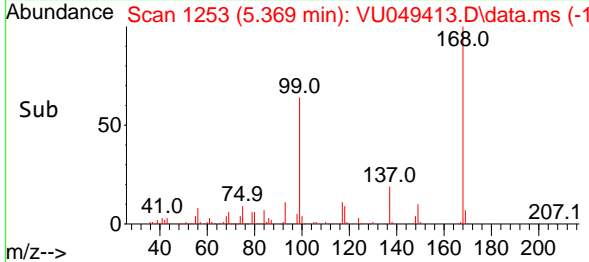
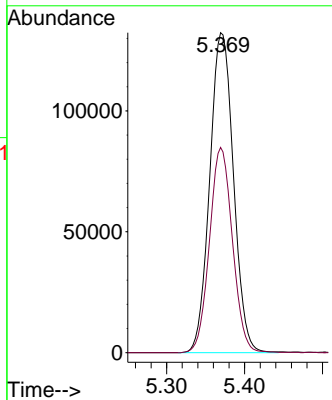
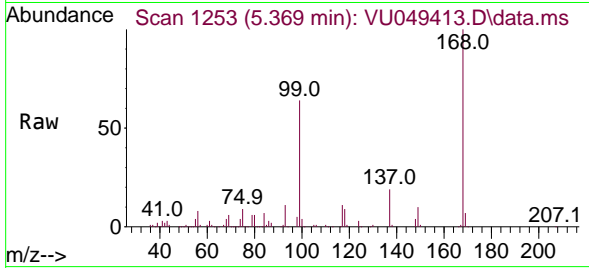




#1  
 Pentafluorobenzene  
 Concen: 50.000 ug/l  
 RT: 5.369 min Scan# 11  
 Delta R.T. 0.000 min  
 Lab File: VU049413.D  
 Acq: 27 Jun 2022 19:05

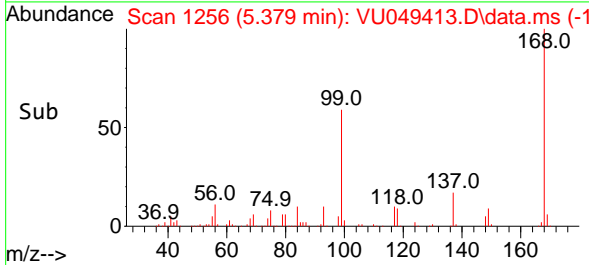
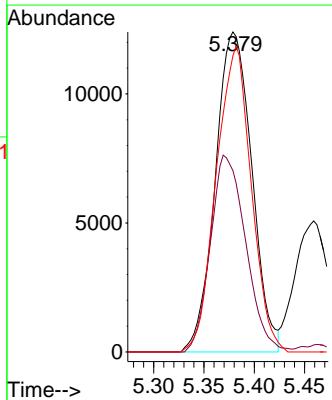
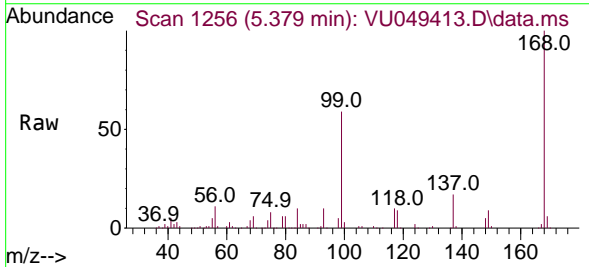
Instrument :  
 MSVOA\_U  
 ClientSampleId :  
 WC-14A-1A-7DL

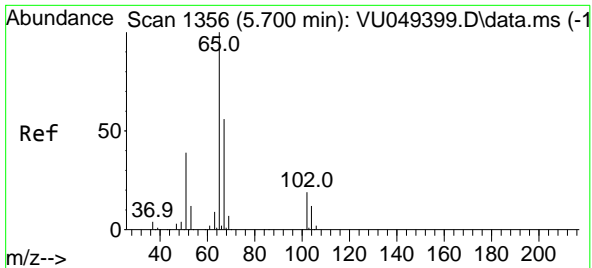
Tgt Ion:168 Resp: 279768  
 Ion Ratio Lower Upper  
 168 100  
 99 64.2 39.3 58.9#



#31  
 Cyclohexane  
 Concen: 4.842 ug/l  
 RT: 5.379 min Scan# 1256  
 Delta R.T. -0.003 min  
 Lab File: VU049413.D  
 Acq: 27 Jun 2022 19:05

Tgt Ion: 56 Resp: 31322  
 Ion Ratio Lower Upper  
 56 100  
 69 56.6 27.8 41.8#  
 84 92.5 74.2 111.4

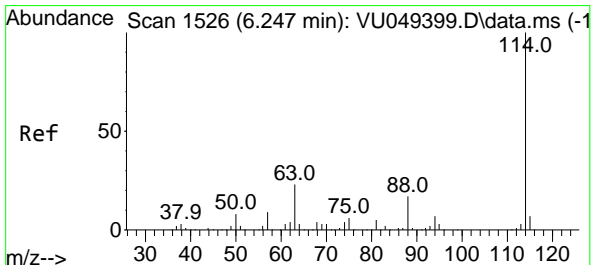
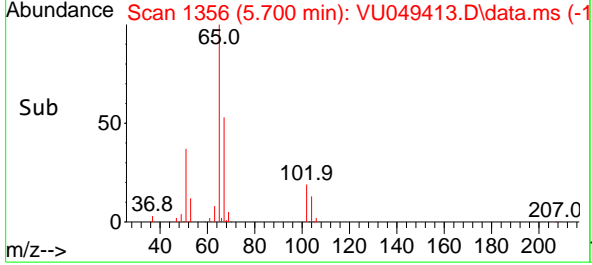
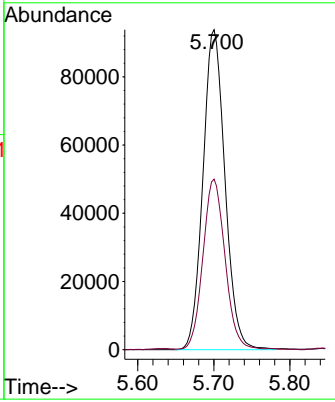
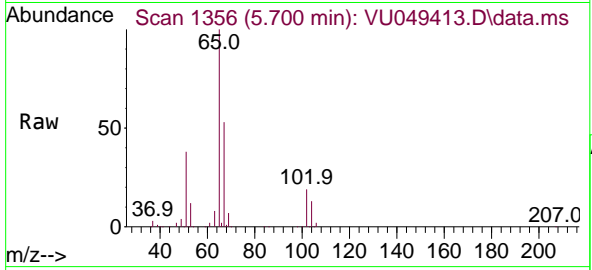




#33  
 1,2-Dichloroethane-d4  
 Concen: 43.850 ug/l  
 RT: 5.700 min Scan# 11  
 Delta R.T. 0.000 min  
 Lab File: VU049413.D  
 Acq: 27 Jun 2022 19:05

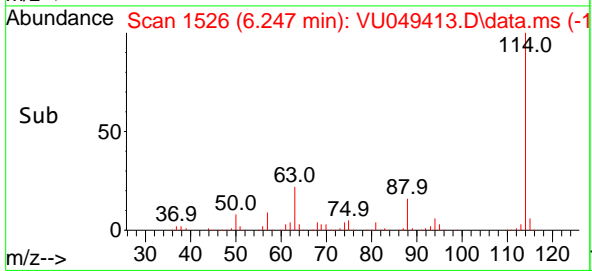
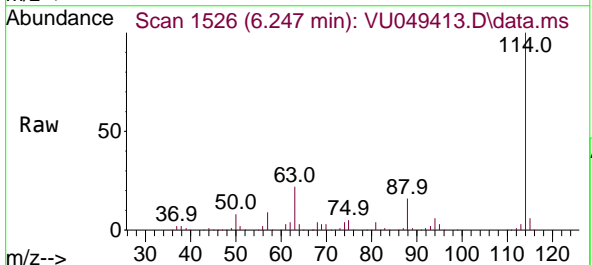
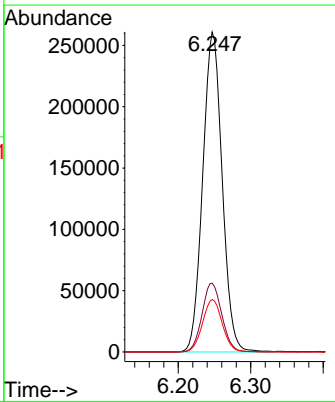
Instrument : MSVOA\_U  
 ClientSampleId : WC-14A-1A-7DL

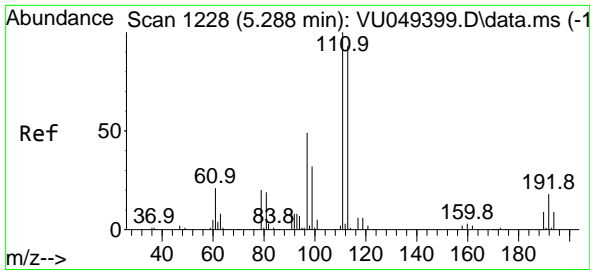
Tgt Ion: 65 Resp: 188934  
 Ion Ratio Lower Upper  
 65 100  
 67 52.8 0.0 108.0



#34  
 1,4-Difluorobenzene  
 Concen: 50.000 ug/l  
 RT: 6.247 min Scan# 1526  
 Delta R.T. 0.000 min  
 Lab File: VU049413.D  
 Acq: 27 Jun 2022 19:05

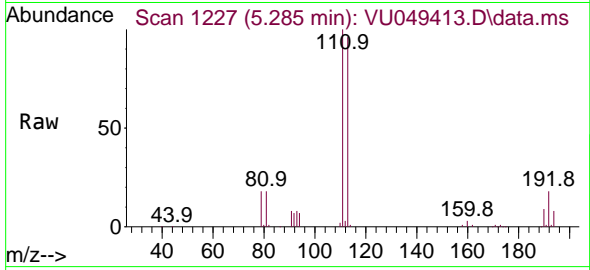
Tgt Ion:114 Resp: 485690  
 Ion Ratio Lower Upper  
 114 100  
 63 21.5 0.0 37.8  
 88 16.4 0.0 29.2



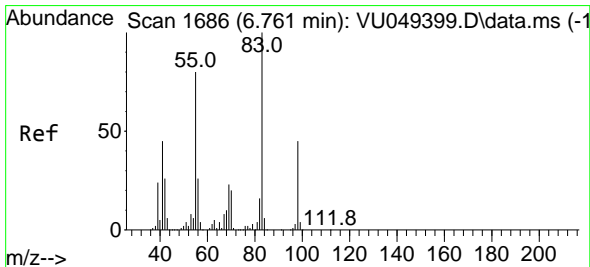
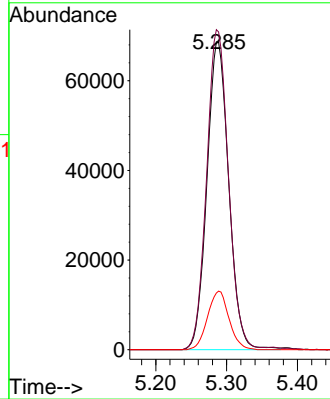
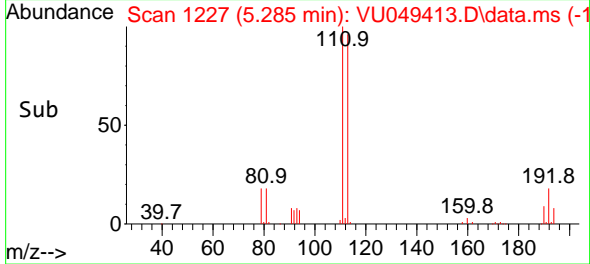


#35  
 Dibromofluoromethane  
 Concen: 43.232 ug/l  
 RT: 5.285 min Scan# 111  
 Delta R.T. -0.003 min  
 Lab File: VU049413.D  
 Acq: 27 Jun 2022 19:05

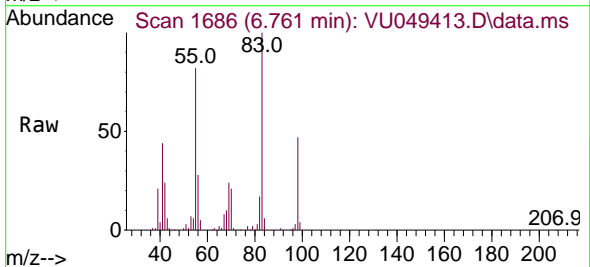
Instrument :  
 MSVOA\_U  
 ClientSampleId :  
 WC-14A-1A-7DL



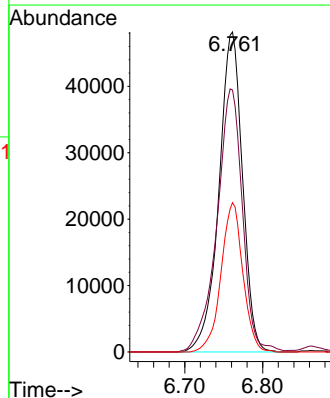
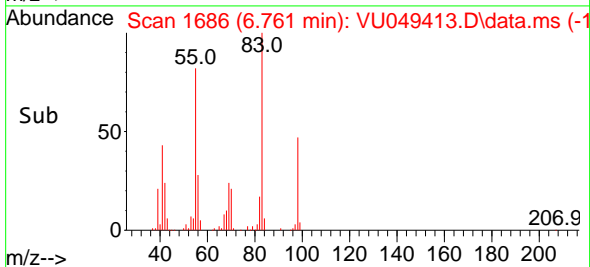
Tgt Ion:113 Resp: 146902  
 Ion Ratio Lower Upper  
 113 100  
 111 104.0 82.1 123.1  
 192 18.7 18.0 27.0

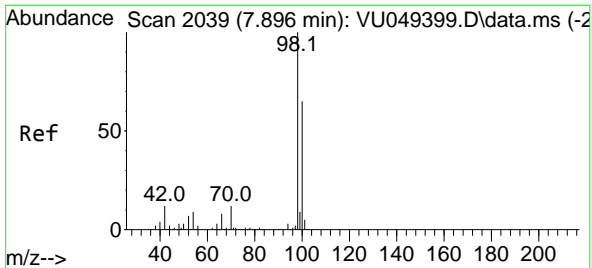


#39  
 Methylcyclohexane  
 Concen: 17.123 ug/l  
 RT: 6.761 min Scan# 1686  
 Delta R.T. 0.000 min  
 Lab File: VU049413.D  
 Acq: 27 Jun 2022 19:05



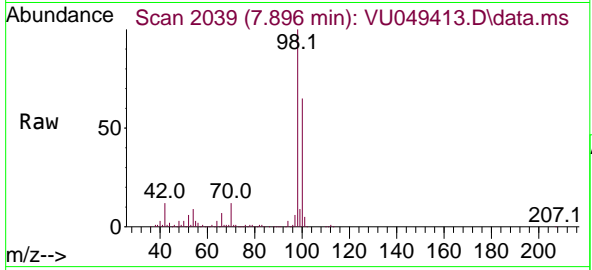
Tgt Ion: 83 Resp: 101125  
 Ion Ratio Lower Upper  
 83 100  
 55 81.6 55.3 82.9  
 98 46.7 37.3 55.9



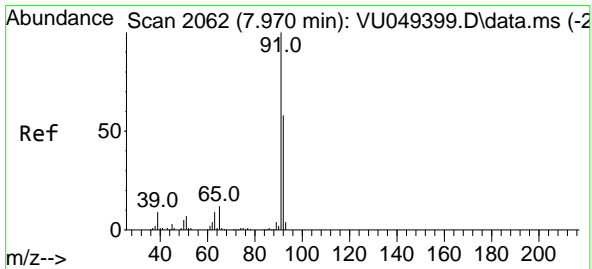
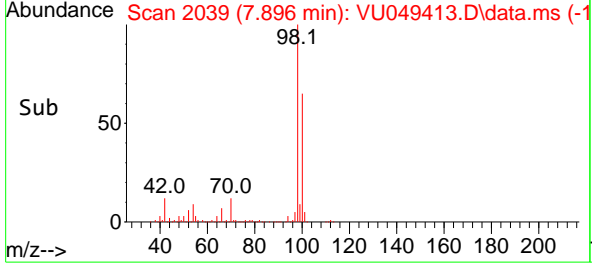
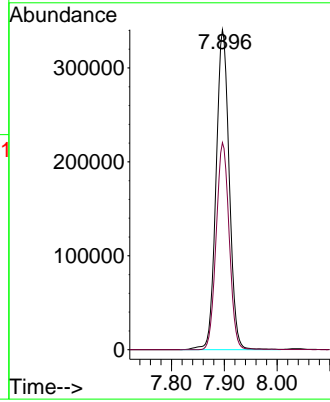


#50  
 Toluene-d8  
 Concen: 48.602 ug/l  
 RT: 7.896 min Scan# 2039  
 Delta R.T. 0.000 min  
 Lab File: VU049413.D  
 Acq: 27 Jun 2022 19:05

Instrument : MSVOA\_U  
 ClientSampleId : WC-14A-1A-7DL

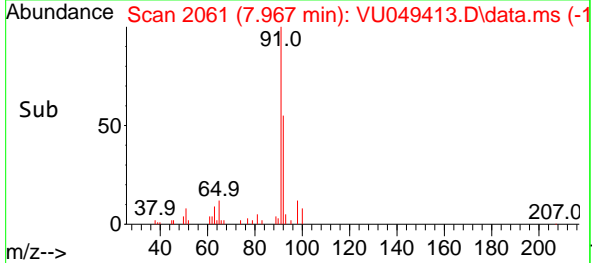
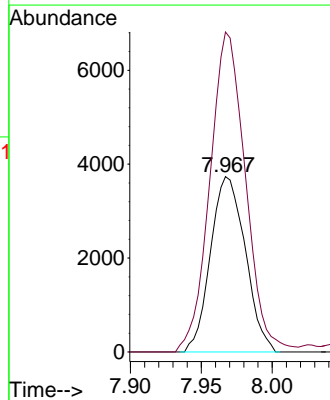
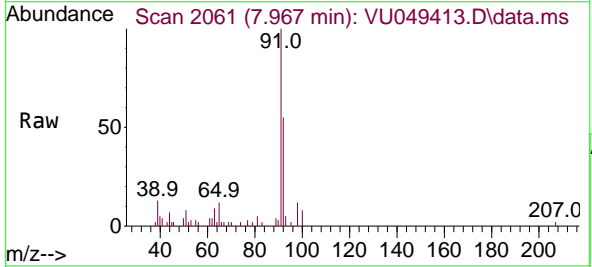


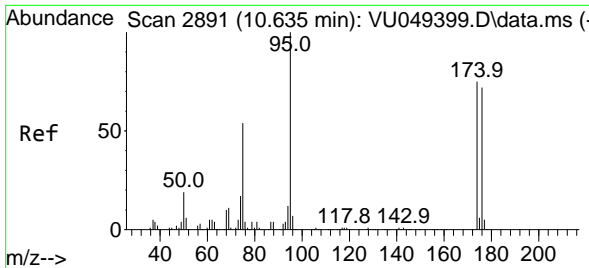
Tgt Ion: 98 Resp: 589051  
 Ion Ratio Lower Upper  
 98 100  
 100 64.0 51.7 77.5



#52  
 Toluene  
 Concen: 0.720 ug/l  
 RT: 7.967 min Scan# 2061  
 Delta R.T. -0.003 min  
 Lab File: VU049413.D  
 Acq: 27 Jun 2022 19:05

Tgt Ion: 92 Resp: 6370  
 Ion Ratio Lower Upper  
 92 100  
 91 186.7 138.2 207.4



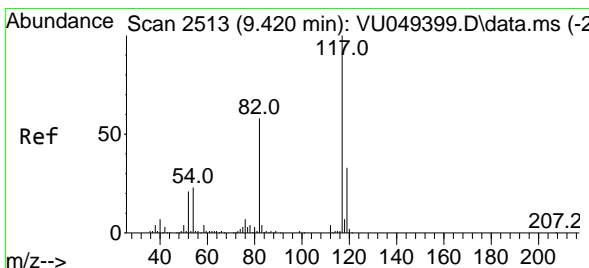
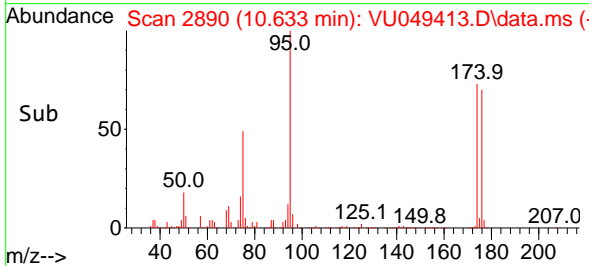
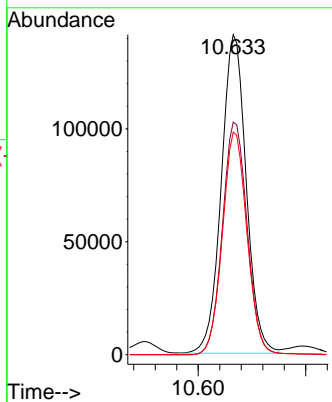
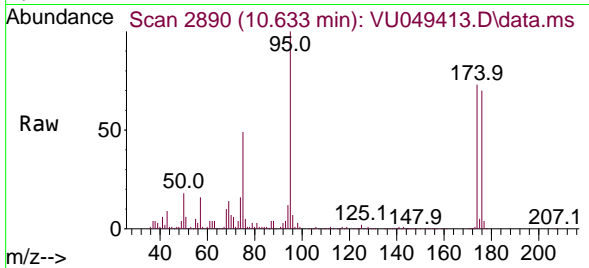


#62  
 4-Bromofluorobenzene  
 Concen: 48.898 ug/l  
 RT: 10.633 min Scan# 21  
 Delta R.T. -0.003 min  
 Lab File: VU049413.D  
 Acq: 27 Jun 2022 19:05

Instrument : MSVOA\_U  
 ClientSampleId : WC-14A-1A-7DL

Tgt Ion: 95 Resp: 227017

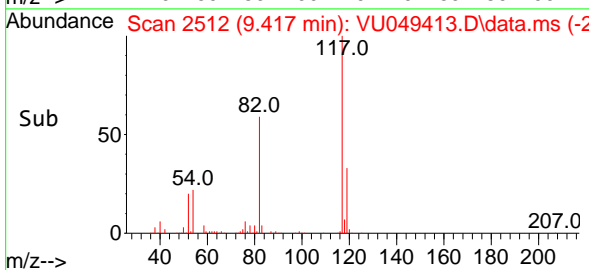
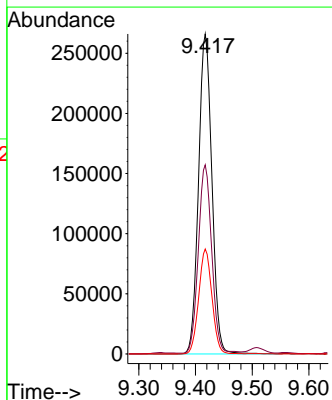
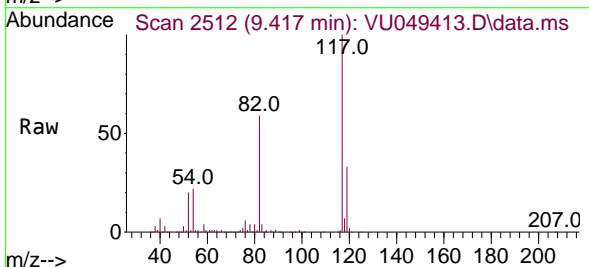
Ion	Ratio	Lower	Upper
95	100		
174	72.8	0.0	182.0
176	69.0	0.0	177.8

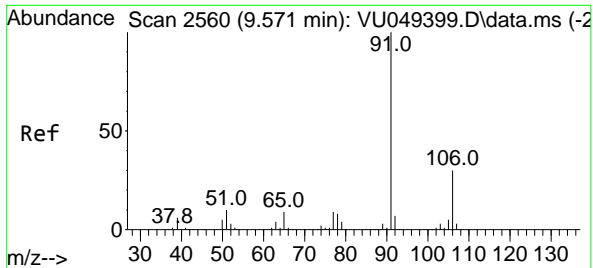


#63  
 Chlorobenzene-d5  
 Concen: 50.000 ug/l  
 RT: 9.417 min Scan# 2512  
 Delta R.T. -0.003 min  
 Lab File: VU049413.D  
 Acq: 27 Jun 2022 19:05

Tgt Ion: 117 Resp: 436236

Ion	Ratio	Lower	Upper
117	100		
82	58.8	41.7	62.5
119	32.8	25.7	38.5

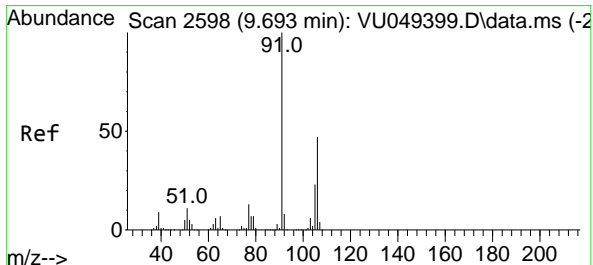
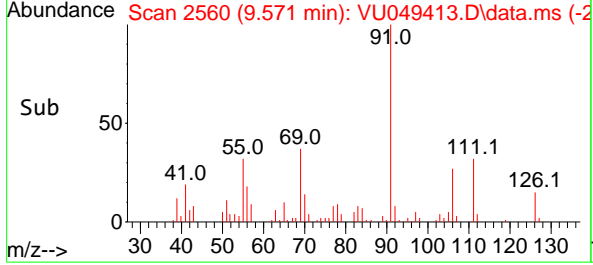
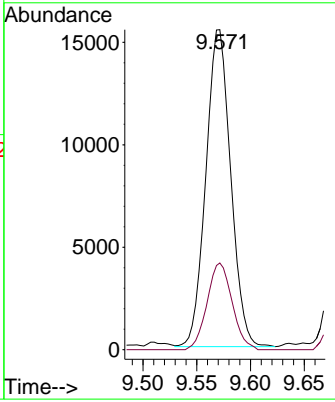
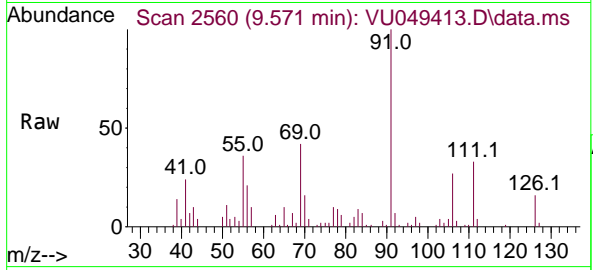




#67  
 Ethyl Benzene  
 Concen: 1.518 ug/l  
 RT: 9.571 min Scan# 2560  
 Delta R.T. 0.000 min  
 Lab File: VU049413.D  
 Acq: 27 Jun 2022 19:05

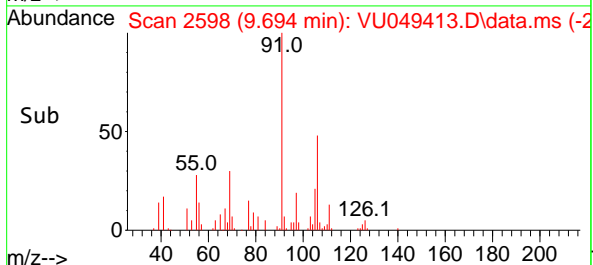
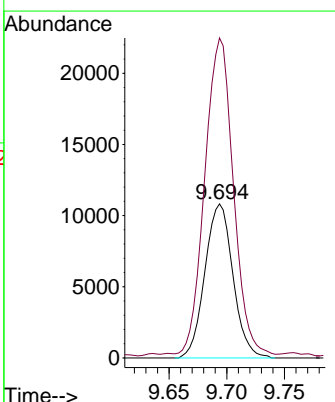
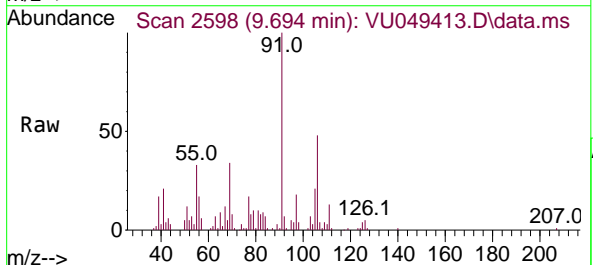
Instrument : MSVOA\_U  
 ClientSampleId : WC-14A-1A-7DL

Tgt Ion: 91 Resp: 24858  
 Ion Ratio Lower Upper  
 91 100  
 106 27.3 25.6 38.4

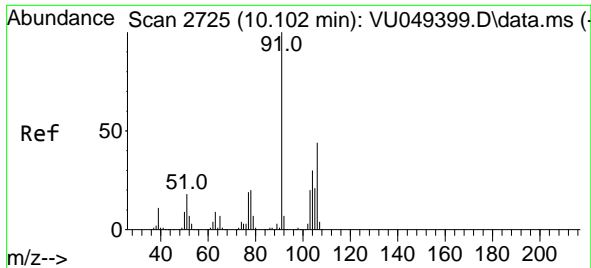


#68  
 m/p-Xylenes  
 Concen: 3.016 ug/l  
 RT: 9.694 min Scan# 2598  
 Delta R.T. 0.000 min  
 Lab File: VU049413.D  
 Acq: 27 Jun 2022 19:05

Tgt Ion: 106 Resp: 18273  
 Ion Ratio Lower Upper  
 106 100  
 91 207.8 157.2 235.8



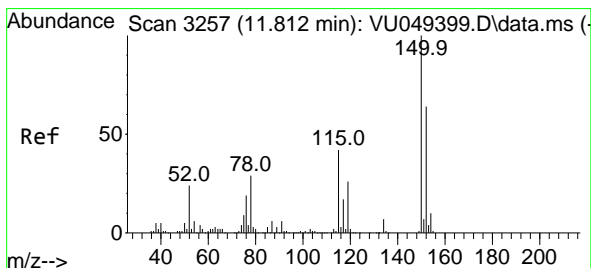
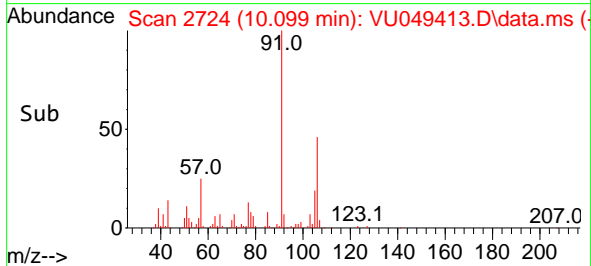
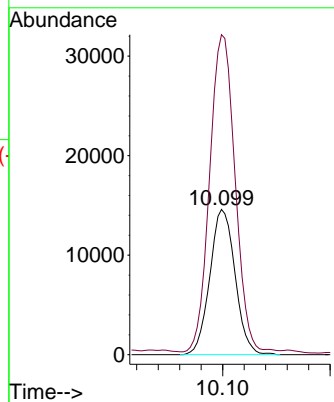
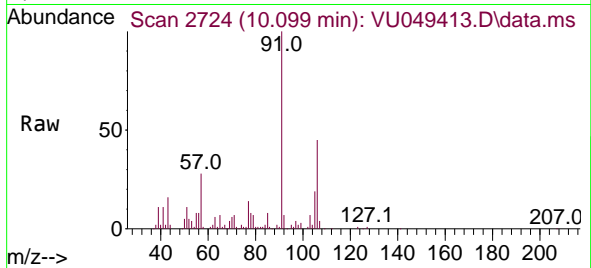




#69  
 o-Xylene  
 Concen: 3.957 ug/l  
 RT: 10.099 min Scan# 21  
 Delta R.T. -0.003 min  
 Lab File: VU049413.D  
 Acq: 27 Jun 2022 19:05

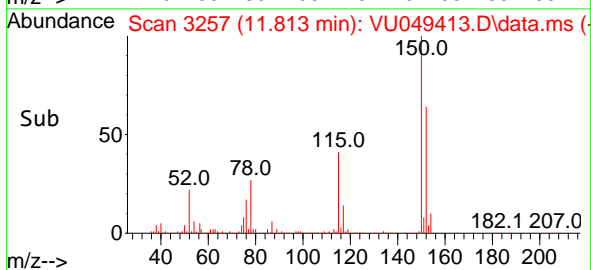
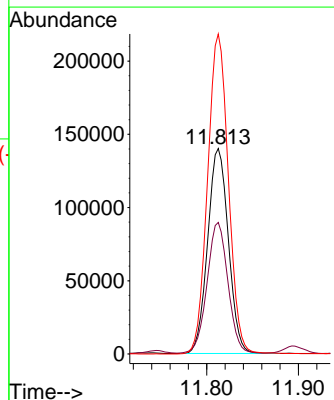
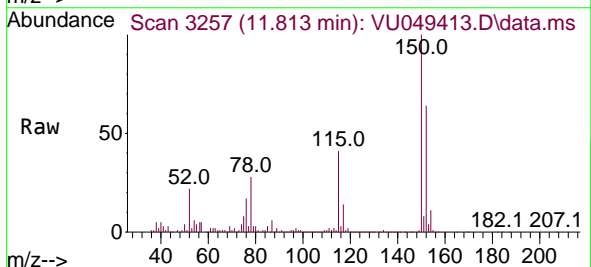
Instrument : MSVOA\_U  
 ClientSampleId : WC-14A-1A-7DL

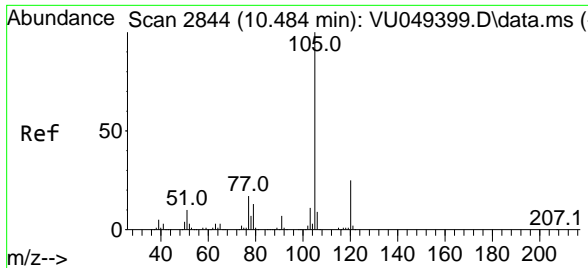
Tgt Ion:106 Resp: 23797  
 Ion Ratio Lower Upper  
 106 100  
 91 219.1 103.5 310.5



#72  
 1,4-Dichlorobenzene-d4  
 Concen: 50.000 ug/l  
 RT: 11.813 min Scan# 3257  
 Delta R.T. 0.000 min  
 Lab File: VU049413.D  
 Acq: 27 Jun 2022 19:05

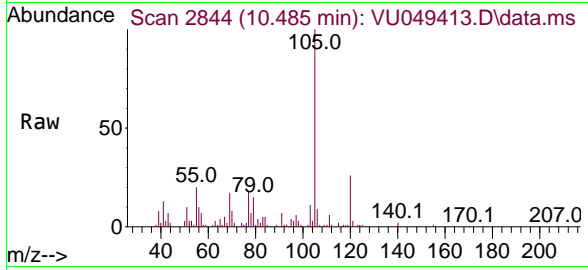
Tgt Ion:152 Resp: 220512  
 Ion Ratio Lower Upper  
 152 100  
 115 64.4 37.0 110.9  
 150 156.3 0.0 342.2



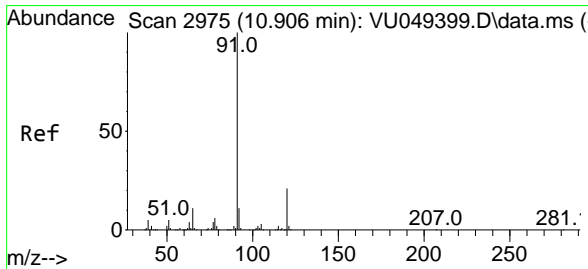
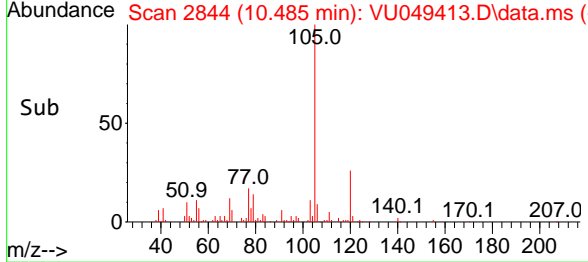
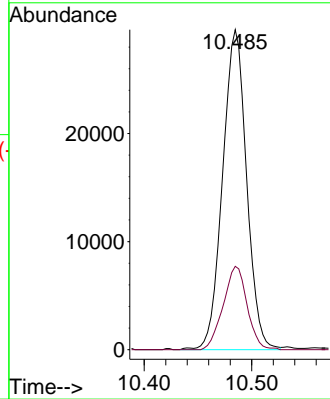


#73  
 Isopropylbenzene  
 Concen: 2.918 ug/l  
 RT: 10.485 min Scan# 2844  
 Delta R.T. 0.000 min  
 Lab File: VU049413.D  
 Acq: 27 Jun 2022 19:05

Instrument :  
 MSVOA\_U  
 ClientSampleId :  
 WC-14A-1A-7DL

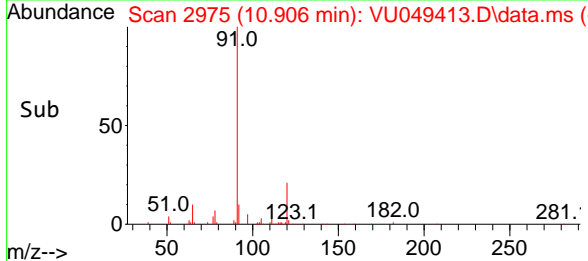
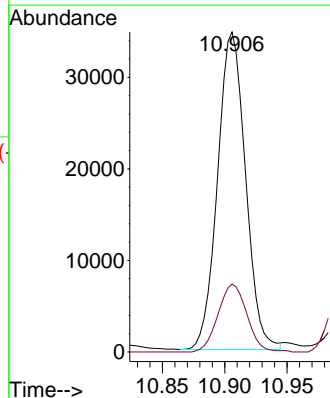
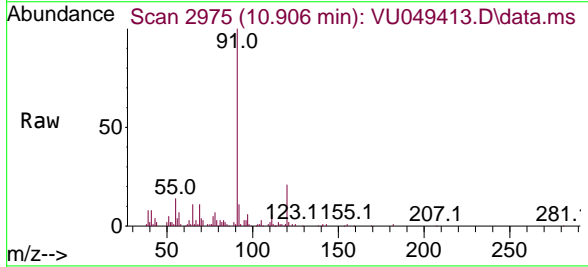


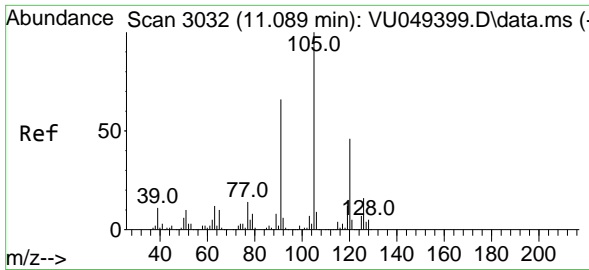
Tgt Ion: 105 Resp: 45832  
 Ion Ratio Lower Upper  
 105 100  
 120 26.0 13.8 41.4



#78  
 n-propylbenzene  
 Concen: 2.841 ug/l  
 RT: 10.906 min Scan# 2975  
 Delta R.T. 0.000 min  
 Lab File: VU049413.D  
 Acq: 27 Jun 2022 19:05

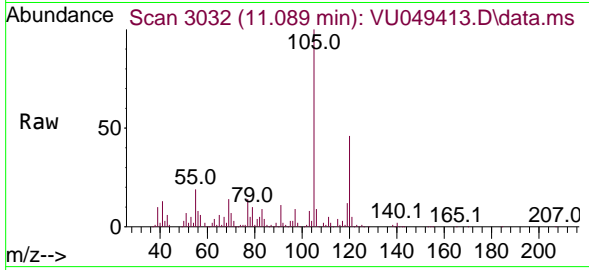
Tgt Ion: 91 Resp: 54223  
 Ion Ratio Lower Upper  
 91 100  
 120 22.0 11.9 35.5



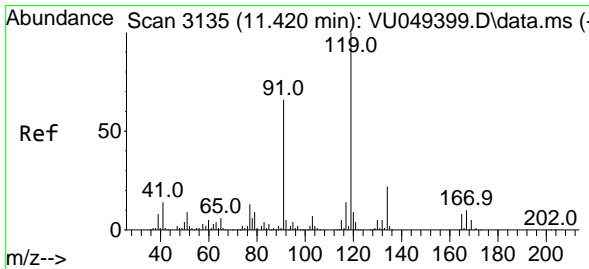
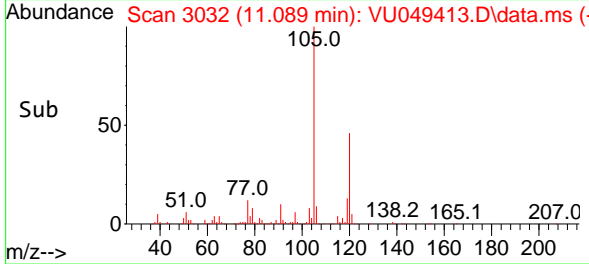
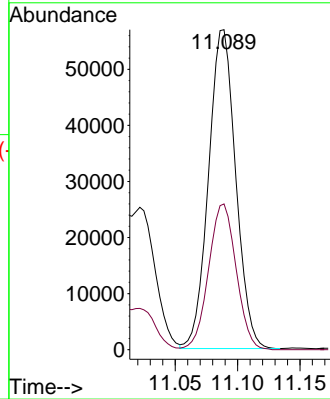


#80  
 1,3,5-Trimethylbenzene  
 Concen: 6.301 ug/l  
 RT: 11.089 min Scan# 3032  
 Delta R.T. 0.000 min  
 Lab File: VU049413.D  
 Acq: 27 Jun 2022 19:05

Instrument :  
 MSVOA\_U  
 ClientSampleId :  
 WC-14A-1A-7DL

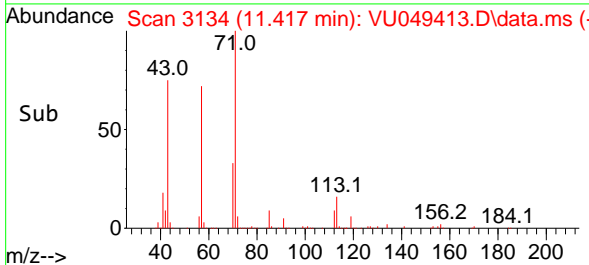
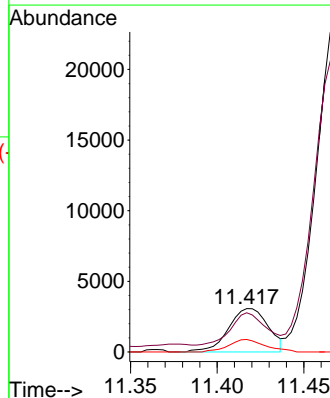
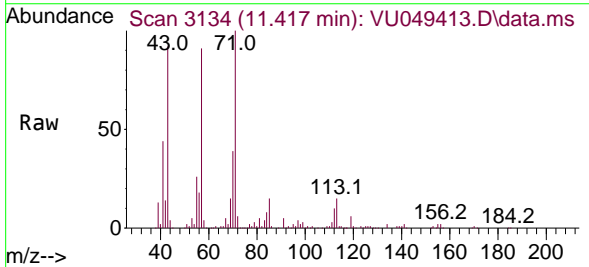


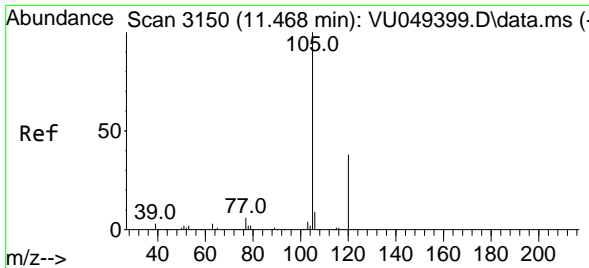
Tgt Ion:105 Resp: 86411  
 Ion Ratio Lower Upper  
 105 100  
 120 46.3 25.3 75.9



#83  
 tert-Butylbenzene  
 Concen: 0.364 ug/l  
 RT: 11.417 min Scan# 3134  
 Delta R.T. -0.003 min  
 Lab File: VU049413.D  
 Acq: 27 Jun 2022 19:05

Tgt Ion:119 Resp: 4906  
 Ion Ratio Lower Upper  
 119 100  
 91 64.5 26.8 80.3  
 134 26.5 11.5 34.5

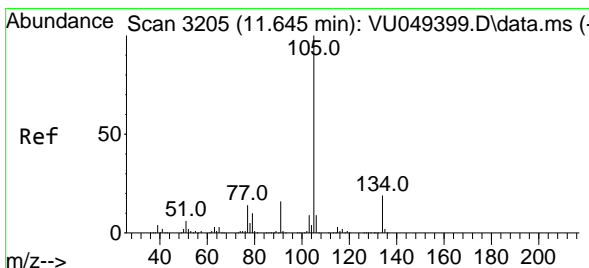
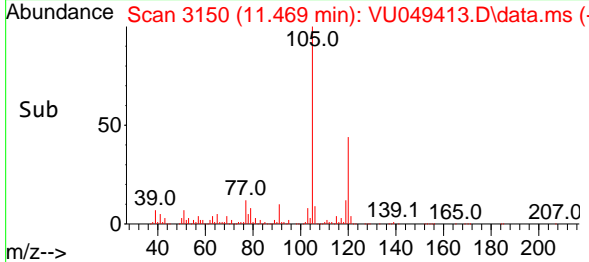
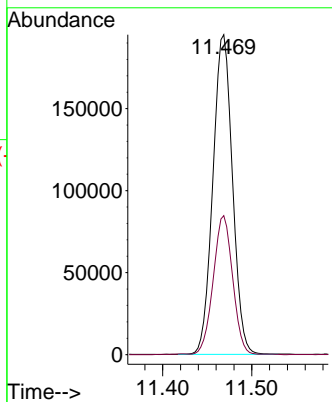
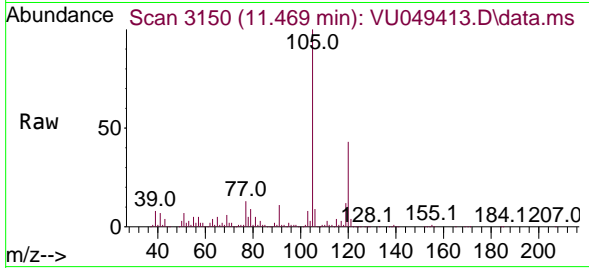




#84  
 1,2,4-Trimethylbenzene  
 Concen: 22.111 ug/l  
 RT: 11.469 min Scan# 3150  
 Delta R.T. 0.000 min  
 Lab File: VU049413.D  
 Acq: 27 Jun 2022 19:05

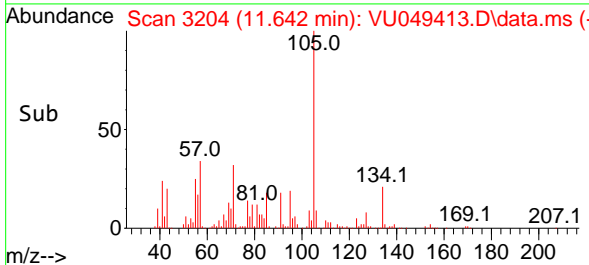
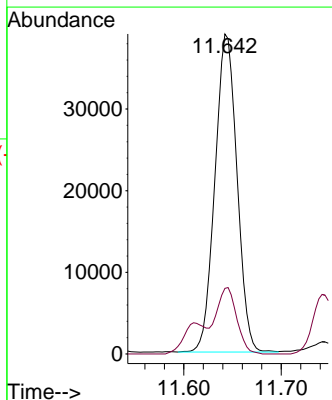
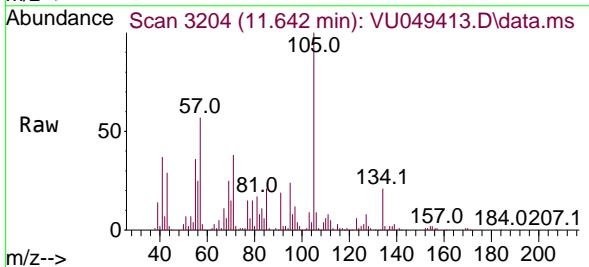
Instrument : MSVOA\_U  
 ClientSampleId : WC-14A-1A-7DL

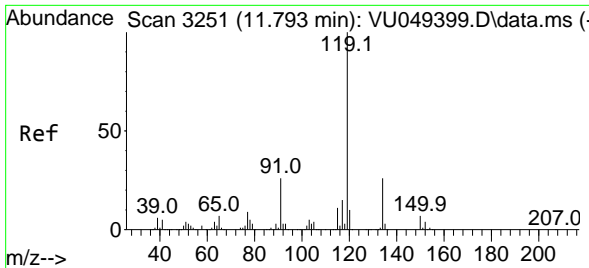
Tgt Ion:105 Resp: 297882  
 Ion Ratio Lower Upper  
 105 100  
 120 42.8 23.4 70.3



#85  
 sec-Butylbenzene  
 Concen: 3.605 ug/l  
 RT: 11.642 min Scan# 3204  
 Delta R.T. -0.003 min  
 Lab File: VU049413.D  
 Acq: 27 Jun 2022 19:05

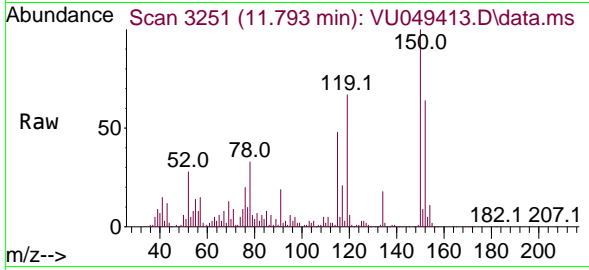
Tgt Ion:105 Resp: 61142  
 Ion Ratio Lower Upper  
 105 100  
 134 19.2 10.4 31.1



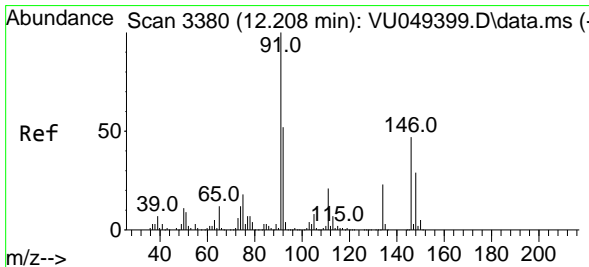
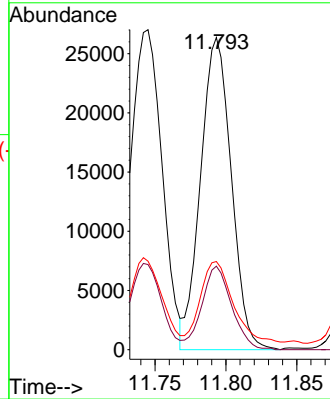
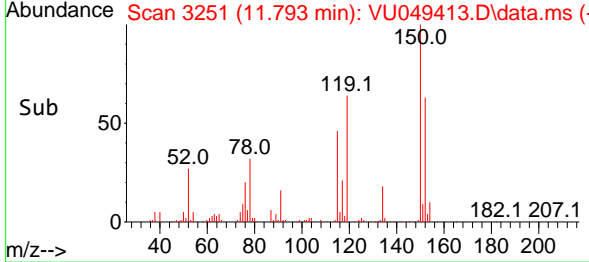


#86  
 p-Isopropyltoluene  
 Concen: 2.893 ug/l  
 RT: 11.793 min Scan# 31  
 Delta R.T. 0.000 min  
 Lab File: VU049413.D  
 Acq: 27 Jun 2022 19:05

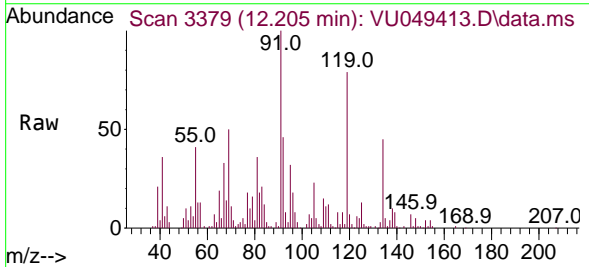
Instrument :  
 MSVOA\_U  
 ClientSampleId :  
 WC-14A-1A-7DL



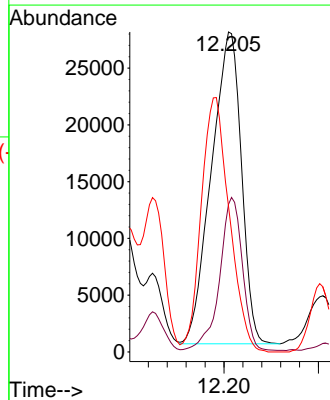
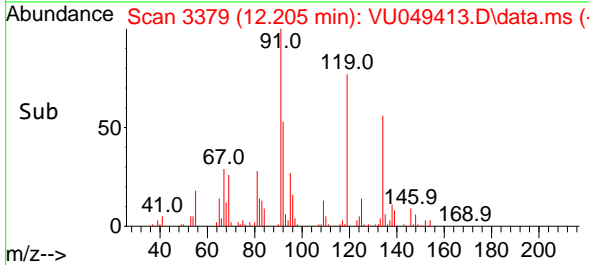
Tgt Ion:119 Resp: 39670  
 Ion Ratio Lower Upper  
 119 100  
 134 26.1 13.5 40.4  
 91 27.2 11.2 33.5

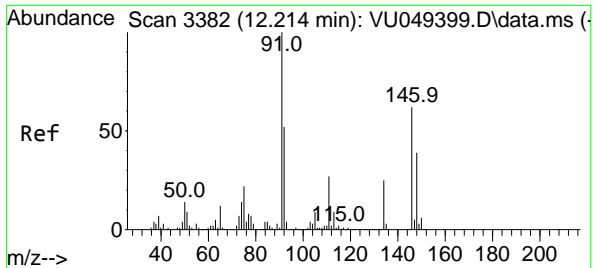


#89  
 n-Butylbenzene  
 Concen: 4.755 ug/l  
 RT: 12.205 min Scan# 3379  
 Delta R.T. -0.003 min  
 Lab File: VU049413.D  
 Acq: 27 Jun 2022 19:05



Tgt Ion: 91 Resp: 60370  
 Ion Ratio Lower Upper  
 91 100  
 92 37.3 26.2 78.6  
 134 76.8 13.5 40.4#





#91  
 1,2-Dichlorobenzene  
 Concen: 0.676 ug/l  
 RT: 12.214 min Scan# 31  
 Delta R.T. 0.000 min  
 Lab File: VU049413.D  
 Acq: 27 Jun 2022 19:05

Instrument : MSVOA\_U  
 ClientSampleId : WC-14A-1A-7DL

Tgt Ion:146 Resp: 4980

Ion	Ratio	Lower	Upper
146	100		
111	45.8	19.9	59.6
148	61.1	32.1	96.5

