

Data Path : Z:\voasrv\HPCHEM1\MSVOA_U\Data\VU062822\
 Data File : VU049461.D
 Acq On : 28 Jun 2022 16:21
 Operator : SY/MD
 Sample : N3480-01
 Misc : 5.0mL/MSVOA_U/WATER
 ALS Vial : 17 Sample Multiplier: 1

Instrument :
 MSVOA_U
 ClientSampleId :
 40814

Integration Parameters: RTEINT.P

Integrator: RTE
 Smoothing : ON Filtering: 5
 Sampling : 1 Min Area: 3 % of largest Peak
 Start Thrs: 0.2 Max Peaks: 100
 Stop Thrs : 0 Peak Location: TOP

If leading or trailing edge < 100 prefer < Baseline drop else tangent >
 Peak separation: 5

Method : Z:\voasrv\HPCHEM1\MSVOA_U\Method\82U062722W.M
 Title : SW846 8260

Signal : TIC: VU049461.D\data.ms

peak #	R.T. min	first scan	max scan	last scan	PK TY	peak height	corr. area	corr. % max.	% of total
1	2.626	382	400	428	rBV	348607	659715	40.01%	2.328%
2	2.781	435	448	471	rVB3	12476	37573	2.28%	0.133%
3	3.189	560	575	593	rBV3	7755	19547	1.19%	0.069%
4	4.710	1037	1048	1075	rBV	20581	49778	3.02%	0.176%
5	5.289	1212	1228	1241	rBV	249883	531713	32.25%	1.876%
6	5.372	1241	1254	1271	rVB	437176	899403	54.55%	3.174%
7	5.703	1342	1357	1376	rBV	266893	553368	33.56%	1.953%
8	6.153	1483	1497	1512	rBV2	16596	35266	2.14%	0.124%
9	6.250	1512	1527	1550	rVV	642161	1216988	73.81%	4.295%
10	6.771	1676	1689	1704	rBV	13987	29133	1.77%	0.103%
11	7.793	1995	2007	2025	rBV2	29240	55261	3.35%	0.195%
12	7.899	2025	2040	2053	rBV	949998	1648775	100.00%	5.818%
13	7.970	2053	2062	2074	rVB	113930	196192	11.90%	0.692%
14	8.488	2212	2223	2235	rBV	26697	46145	2.80%	0.163%
15	8.690	2274	2286	2302	rBV2	11309	21190	1.29%	0.075%
16	9.417	2500	2512	2540	rVB	856693	1421037	86.19%	5.015%
17	9.571	2550	2560	2568	rBV2	33437	53196	3.23%	0.188%
18	9.693	2580	2598	2610	rVB	35744	61682	3.74%	0.218%
19	9.777	2610	2624	2631	rBV4	10123	16990	1.03%	0.060%
20	10.099	2712	2724	2744	rBV	195160	346525	21.02%	1.223%
21	10.237	2751	2767	2778	rBV2	14926	29665	1.80%	0.105%
22	10.484	2834	2844	2854	rVB	13628	22610	1.37%	0.080%
23	10.632	2878	2890	2916	rVB	704791	1163310	70.56%	4.105%
24	10.906	2965	2975	2989	rBV3	19208	46417	2.82%	0.164%
25	10.996	2989	3003	3007	rBV2	76897	113732	6.90%	0.401%
26	11.089	3022	3032	3054	rVB2	120936	234322	14.21%	0.827%
27	11.230	3065	3076	3084	rBV2	17459	26588	1.61%	0.094%
28	11.291	3084	3095	3108	rVB	124197	198887	12.06%	0.702%
29	11.468	3139	3150	3163	rVB	115971	185054	11.22%	0.653%
30	11.642	3198	3204	3215	rVB2	12102	18352	1.11%	0.065%
31	11.742	3226	3235	3244	rBV2	55354	81265	4.93%	0.287%
32	11.812	3244	3257	3271	rVV	852370	1377107	83.52%	4.860%
33	11.893	3272	3282	3296	rVB	247338	383436	23.26%	1.353%
34	12.060	3326	3334	3336	rBV2	22454	27179	1.65%	0.096%
35	12.095	3336	3345	3351	rBV2	137446	215779	13.09%	0.761%
36	12.189	3363	3374	3400	rVB3	156459	317023	19.23%	1.119%

Data Path : Z:\voasrv\HPCHEM1\MSVOA_U\Data\VU062822\
 Data File : VU049461.D
 Acq On : 28 Jun 2022 16:21
 Operator : SY/MD
 Sample : N3480-01
 Misc : 5.0mL/MSVOA_U/WATER
 ALS Vial : 17 Sample Multiplier: 1

Instrument :
 MSVOA_U
 ClientSampleId :
 40814

Integration Parameters: RTEINT.P

Integrator: RTE
 Smoothing : ON Filtering: 5
 Sampling : 1 Min Area: 3 % of largest Peak
 Start Thrs: 0.2 Max Peaks: 100
 Stop Thrs : 0 Peak Location: TOP

If leading or trailing edge < 100 prefer < Baseline drop else tangent >
 Peak separation: 5

Method : Z:\voasrv\HPCHEM1\MSVOA_U\Method\82U062722W.M
 Title : SW846 8260

37	12.324	3400	3416	3423	rBV8	27741	76608	4.65%	0.270%
38	12.375	3423	3432	3447	rVB2	70642	126318	7.66%	0.446%
39	12.465	3447	3460	3464	rBV	74497	121758	7.38%	0.430%
40	12.494	3465	3469	3480	rVV	87567	121957	7.40%	0.430%
41	12.571	3483	3493	3501	rVV	179702	276237	16.75%	0.975%
42	12.610	3501	3505	3515	rVB2	37270	51084	3.10%	0.180%
43	12.684	3517	3528	3548	rBV3	106192	269376	16.34%	0.951%
44	12.809	3560	3567	3577	rBV2	27998	47001	2.85%	0.166%
45	12.877	3578	3588	3598	rVB	93892	156645	9.50%	0.553%
46	12.973	3599	3618	3625	rBV	173703	295267	17.91%	1.042%
47	13.025	3625	3634	3648	rVB	302324	476973	28.93%	1.683%
48	13.108	3649	3660	3664	rBV2	42683	73278	4.44%	0.259%
49	13.137	3665	3669	3674	rVB3	23916	24774	1.50%	0.087%
50	13.256	3700	3706	3708	rBV3	25442	27466	1.67%	0.097%
51	13.291	3708	3717	3727	rVB3	257144	411104	24.93%	1.451%
52	13.353	3728	3736	3743	rVB2	48685	66640	4.04%	0.235%
53	13.404	3744	3752	3756	rBV3	62975	98780	5.99%	0.349%
54	13.452	3756	3767	3780	rVV3	769250	1420237	86.14%	5.012%
55	13.516	3781	3787	3795	rVV4	89028	143256	8.69%	0.506%
56	13.558	3795	3800	3807	rVV	41456	55106	3.34%	0.194%
57	13.623	3810	3820	3843	rVB	594449	988942	59.98%	3.490%
58	13.735	3845	3855	3862	rBV2	78442	135796	8.24%	0.479%
59	13.787	3862	3871	3878	rVV2	148441	243004	14.74%	0.858%
60	13.838	3878	3887	3903	rVV5	205221	498886	30.26%	1.761%
61	13.909	3905	3909	3913	rVV2	84961	116031	7.04%	0.409%
62	13.941	3913	3919	3935	rVB2	154839	322041	19.53%	1.136%
63	14.086	3957	3964	3971	rBV	93373	123976	7.52%	0.437%
64	14.188	3985	3996	4010	rVB	278692	481125	29.18%	1.698%
65	14.285	4014	4026	4038	rBV2	289450	522370	31.68%	1.843%
66	14.346	4038	4045	4053	rVB2	98240	143303	8.69%	0.506%
67	14.449	4072	4077	4080	rBV2	29797	31282	1.90%	0.110%
68	14.484	4080	4088	4109	rVB	241654	400147	24.27%	1.412%
69	14.578	4112	4117	4120	rBV5	17805	21187	1.29%	0.075%
70	14.616	4122	4129	4136	rVV	100220	140051	8.49%	0.494%
71	14.684	4136	4150	4159	rVV	810698	1604098	97.29%	5.661%
72	14.725	4159	4163	4172	rVB	141092	185876	11.27%	0.656%
73	14.809	4180	4189	4200	rBV4	157144	285051	17.29%	1.006%
74	14.873	4201	4209	4220	rVB3	351299	566334	34.35%	1.999%
75	14.938	4223	4229	4242	rVB2	51698	80583	4.89%	0.284%
76	15.015	4242	4253	4267	rBV2	641026	1078495	65.41%	3.806%

Data Path : Z:\voasrv\HPCHEM1\MSVOA_U\Data\VU062822\
 Data File : VU049461.D
 Acq On : 28 Jun 2022 16:21
 Operator : SY/MD
 Sample : N3480-01
 Misc : 5.0mL/MSVOA_U/WATER
 ALS Vial : 17 Sample Multiplier: 1

Instrument :
 MSVOA_U
 ClientSampleId :
 40814

Integration Parameters: RTEINT.P

Integrator: RTE
 Smoothing : ON Filtering: 5
 Sampling : 1 Min Area: 3 % of largest Peak
 Start Thrs: 0.2 Max Peaks: 100
 Stop Thrs : 0 Peak Location: TOP

If leading or trailing edge < 100 prefer < Baseline drop else tangent >
 Peak separation: 5

Method : Z:\voasrv\HPCHEM1\MSVOA_U\Method\82U062722W.M
 Title : SW846 8260

77	15.160	4289	4298	4301	rBV8	40730	63255	3.84%	0.223%
78	15.201	4301	4311	4313	rBV2	258174	365945	22.19%	1.291%
79	15.269	4326	4332	4345	rVB3	173448	300651	18.23%	1.061%
80	15.346	4348	4356	4364	rBV3	62087	99469	6.03%	0.351%
81	15.407	4365	4375	4385	rBV3	237376	412723	25.03%	1.456%
82	15.465	4386	4393	4399	rBV3	87832	132378	8.03%	0.467%
83	15.574	4419	4427	4442	rVB3	119426	248237	15.06%	0.876%
84	15.684	4455	4461	4470	rVB3	67775	105405	6.39%	0.372%
85	15.764	4480	4486	4494	rVB4	43985	63816	3.87%	0.225%
86	15.832	4500	4507	4514	rBV	71643	98627	5.98%	0.348%
87	15.877	4515	4521	4527	rVV	74588	104569	6.34%	0.369%
88	15.925	4528	4536	4555	rVB3	241265	531315	32.22%	1.875%
89	16.143	4596	4604	4613	rBV5	72082	130836	7.94%	0.462%
90	16.262	4632	4641	4648	rBV2	148135	243673	14.78%	0.860%
91	16.407	4677	4686	4693	rBV2	185351	305687	18.54%	1.079%
92	16.446	4693	4698	4715	rVB	120476	196736	11.93%	0.694%
93	16.783	4797	4803	4811	rBV3	35271	54921	3.33%	0.194%
94	16.880	4826	4833	4846	rBV	36107	71466	4.33%	0.252%
95	17.375	4981	4987	4998	rBV2	32813	45298	2.75%	0.160%
96	17.539	5031	5038	5050	rVB4	45749	81740	4.96%	0.288%
97	17.606	5053	5059	5067	rBV3	19877	32027	1.94%	0.113%

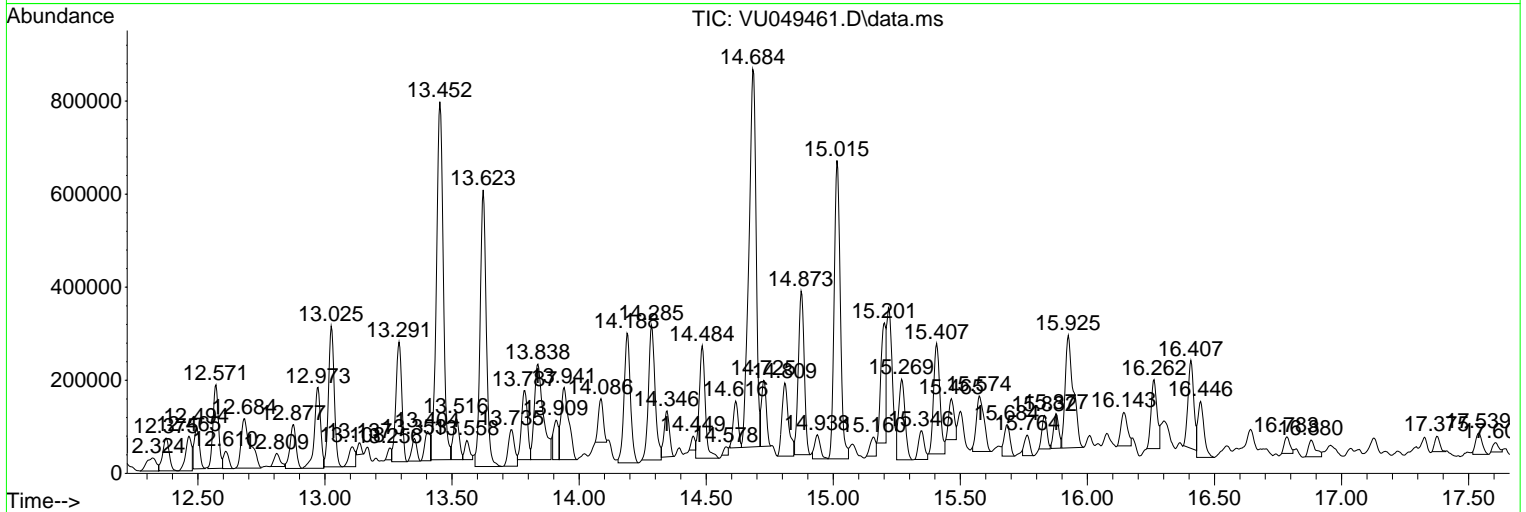
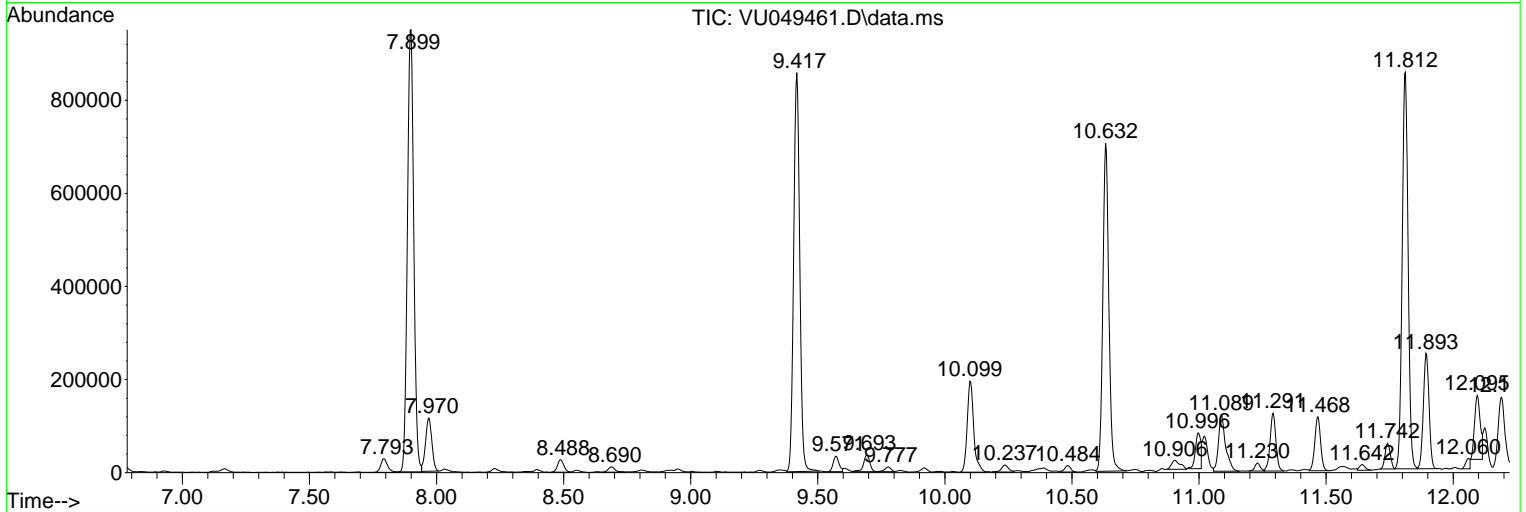
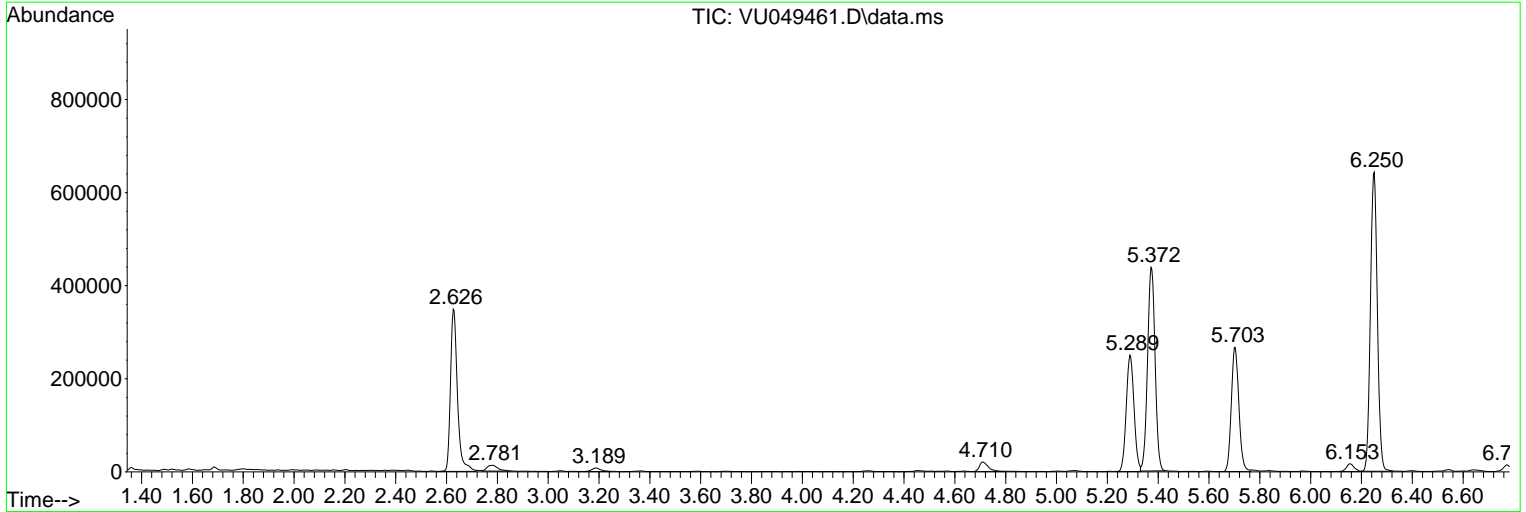
Sum of corrected areas: 28337420

Data Path : Z:\voasrv\HPCHEM1\MSVOA_U\Data\VU062822\
 Data File : VU049461.D
 Acq On : 28 Jun 2022 16:21
 Operator : SY/MD
 Sample : N3480-01
 Misc : 5.0mL/MSVOA_U/WATER
 ALS Vial : 17 Sample Multiplier: 1

Instrument :
 MSVOA_U
 ClientSampleId :
 40814

Quant Method : Z:\voasrv\HPCHEM1\MSVOA_U\Method\82U062722W.M
 Quant Title : SW846 8260

TIC Library :
 TIC Integration Parameters: RTEINT.P



Library Search Compound Report

Data Path : Z:\voasrv\HPCHEM1\MSVOA_U\Data\VU062822\
Data File : VU049461.D
Acq On : 28 Jun 2022 16:21
Operator : SY/MD
Sample : N3480-01
Misc : 5.0mL/MSVOA_U/WATER
ALS Vial : 17 Sample Multiplier: 1

Instrument :
MSVOA_U
ClientSampleId :
40814

Quant Method : Z:\voasrv\HPCHEM1\MSVOA_U\Method\82U062722W.M
Quant Title : SW846 8260

TIC Library :
TIC Integration Parameters: RTEINT.P

No Library Search Compounds Detected

Data Path : Z:\voasrv\HPCHEM1\MSVOA_U\Data\VU062822\
Data File : VU049461.D
Acq On : 28 Jun 2022 16:21
Operator : SY/MD
Sample : N3480-01
Misc : 5.0mL/MSVOA_U/WATER
ALS Vial : 17 Sample Multiplier: 1

Instrument :
MSVOA_U
ClientSampleId :
40814

Quant Method : Z:\voasrv\HPCHEM1\MSVOA_U\Method\82U062722W.M
Quant Title : SW846 8260

TIC Library :
TIC Integration Parameters: RTEINT.P

TIC Top Hit name	RT	EstConc	Units	Response	--Internal Standard--		
					#	RT	Resp Conc
