

Data Path : Z:\voasrv\HPCHEM1\MSVOA\_U\Data\VU062823\  
 Data File : VU054682.D  
 Acq On : 28 Jun 2023 16:17  
 Operator : MD/SY  
 Sample : 03457-04  
 Misc : 25.0mL/MSVOA\_U/WATER  
 ALS Vial : 12 Sample Multiplier: 1

Instrument :  
 MSVOA\_U  
 ClientSampleId :  
 C0C54

Quant Time: Jun 29 04:37:22 2023  
 Quant Method : Z:\voasrv\HPCHEM1\MSVOA\_U\Method\SFAMUTR060723WMA.M  
 Quant Title : TRACE VOA SFAM1.0  
 QLast Update : Fri Jun 23 23:55:46 2023  
 Response via : Initial Calibration

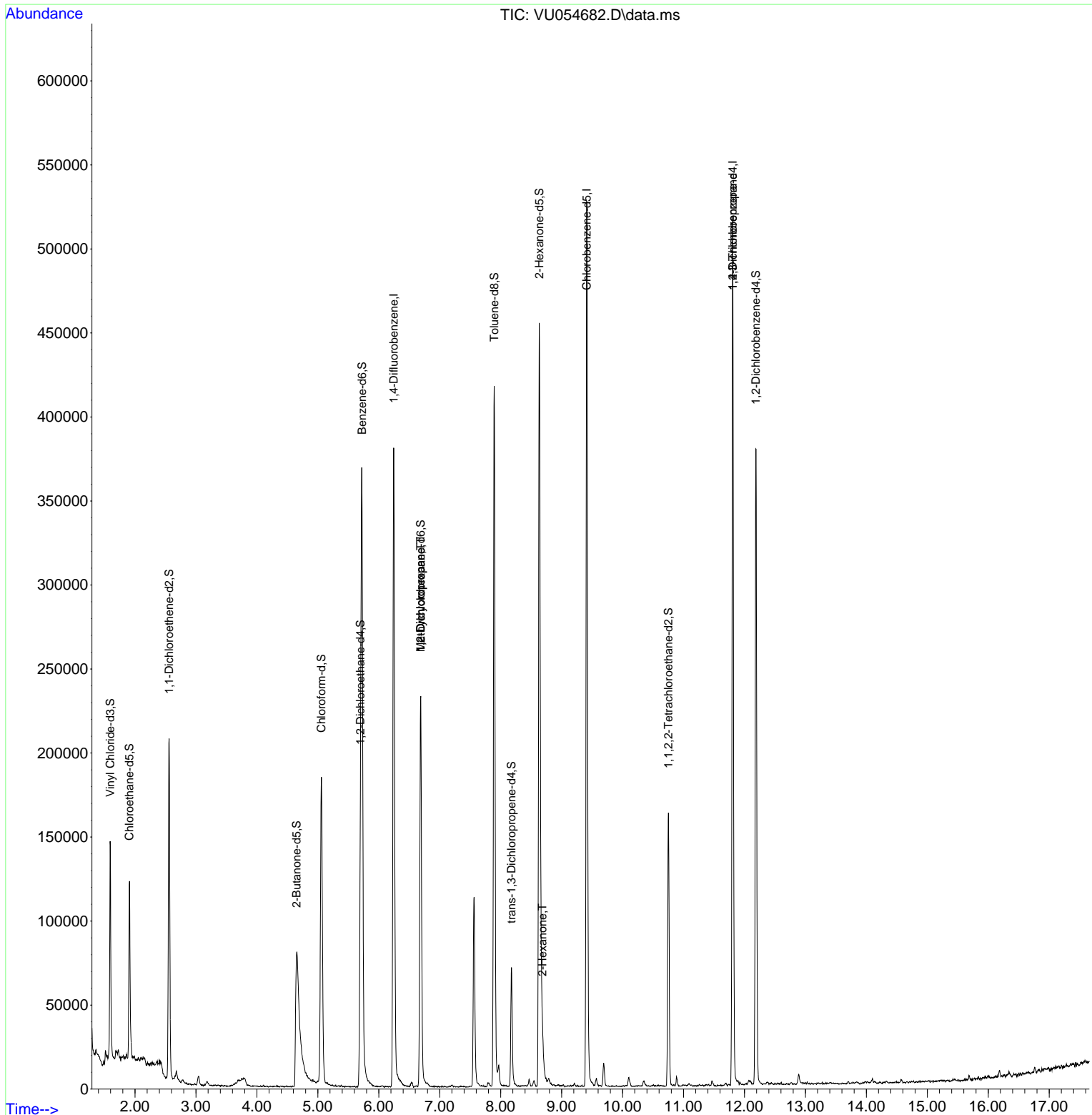
Compound	R.T.	QIon	Response	Conc	Units	Dev(Min)
Internal Standards						
1) 1,4-Difluorobenzene	6.245	114	299423	5.000	ug/L	0.00
28) Chlorobenzene-d5	9.412	117	293810	5.000	ug/L	0.00
58) 1,4-Dichlorobenzene-d4	11.807	152	133704	5.000	ug/L	0.00
System Monitoring Compounds						
4) Vinyl Chloride-d3	1.592	65	98043	5.145	ug/L	0.00
Spiked Amount	5.000	Range 40 - 130	Recovery	=	103.000%	
7) Chloroethane-d5	1.907	69	82566	4.628	ug/L	0.00
Spiked Amount	5.000	Range 65 - 130	Recovery	=	92.600%	
11) 1,1-Dichloroethene-d2	2.560	65	40361	4.742	ug/L	0.00
Spiked Amount	5.000	Range 60 - 125	Recovery	=	94.800%	
20) 2-Butanone-d5	4.653	46	237580	44.344	ug/L	0.03
Spiked Amount	50.000	Range 40 - 130	Recovery	=	88.680%	
24) Chloroform-d	5.058	84	170515	4.281	ug/L	0.00
Spiked Amount	5.000	Range 70 - 125	Recovery	=	85.600%	
26) 1,2-Dichloroethane-d4	5.698	65	88971	4.582	ug/L	0.00
Spiked Amount	5.000	Range 70 - 130	Recovery	=	91.600%	
32) Benzene-d6	5.724	84	338337	4.143	ug/L	0.00
Spiked Amount	5.000	Range 70 - 125	Recovery	=	82.800%	
36) 1,2-Dichloropropane-d6	6.689	67	117571	4.311	ug/L	0.00
Spiked Amount	5.000	Range 60 - 140	Recovery	=	86.200%	
41) Toluene-d8	7.894	98	281761	3.887	ug/L	0.00
Spiked Amount	5.000	Range 70 - 130	Recovery	=	77.800%	
43) trans-1,3-Dichloroprop...	8.177	79	40945	4.317	ug/L	0.00
Spiked Amount	5.000	Range 55 - 130	Recovery	=	86.400%	
46) 2-Hexanone-d5	8.634	63	164985	41.461	ug/L	0.00
Spiked Amount	50.000	Range 45 - 130	Recovery	=	82.920%	
56) 1,1,2,2-Tetrachloroeth...	10.753	84	85864	4.221	ug/L	0.00
Spiked Amount	5.000	Range 65 - 120	Recovery	=	84.400%	
66) 1,2-Dichlorobenzene-d4	12.187	152	99763	4.424	ug/L	0.00
Spiked Amount	5.000	Range 80 - 120	Recovery	=	88.400%	
Target Compounds						
35) Methylcyclohexane	6.689	83	25795	0.611	ug/L #	16
37) 1,2-Dichloropropane	6.689	63	12845	0.450	ug/L #	91
48) 2-Hexanone	8.685	43	8031	0.707	ug/L #	87
61) 1,2,3-Trichloropropane	11.807	75	16896	1.250	ug/L #	69

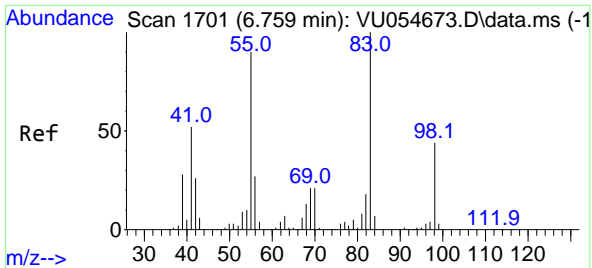
(#) = qualifier out of range (m) = manual integration (+) = signals summed

Data Path : Z:\voasrv\HPCHEM1\MSVOA\_U\Data\VU062823\  
 Data File : VU054682.D  
 Acq On : 28 Jun 2023 16:17  
 Operator : MD/SY  
 Sample : 03457-04  
 Misc : 25.0mL/MSVOA\_U/WATER  
 ALS Vial : 12 Sample Multiplier: 1

Instrument :  
 MSVOA\_U  
 ClientSampleId :  
 C0C54

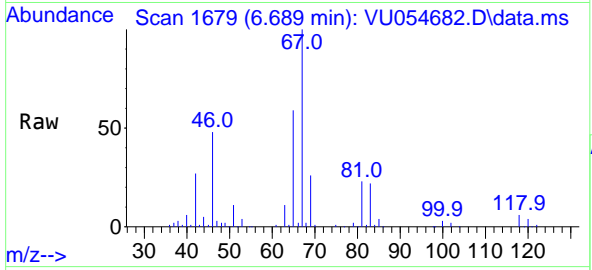
Quant Time: Jun 29 04:37:22 2023  
 Quant Method : Z:\voasrv\HPCHEM1\MSVOA\_U\Method\SFAMUTR060723WMA.M  
 Quant Title : TRACE VOA SFAM1.0  
 QLast Update : Fri Jun 23 23:55:46 2023  
 Response via : Initial Calibration



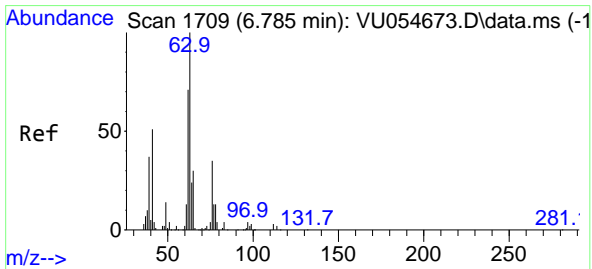
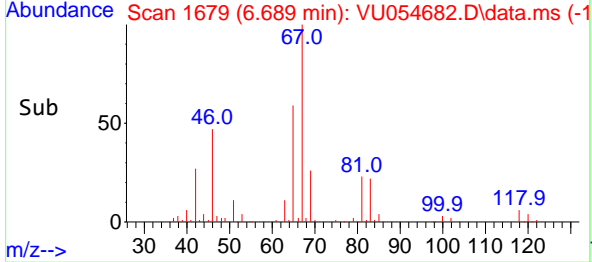
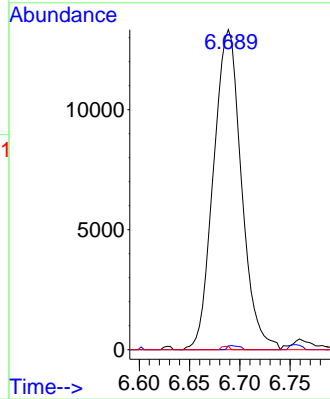


#35  
 Methylcyclohexane  
 Concen: 0.611 ug/L  
 RT: 6.689 min Scan# 1679  
 Delta R.T. -0.071 min  
 Lab File: VU054682.D  
 Acq: 28 Jun 2023 16:17

Instrument : MSVOA\_U  
 ClientSampleId : C0C54

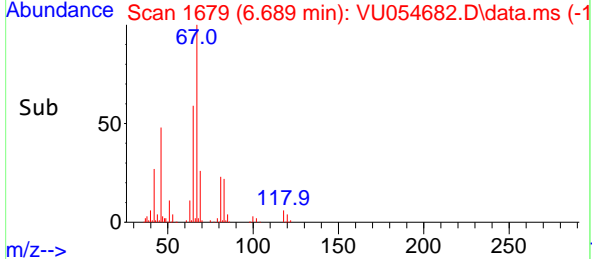
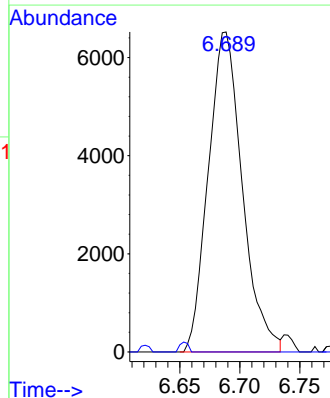
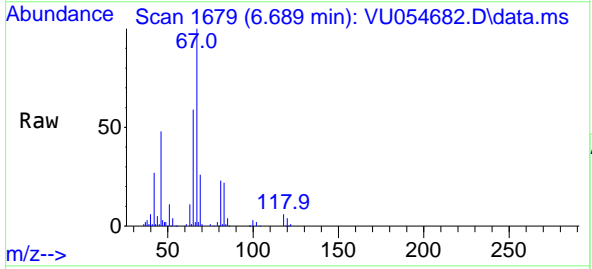


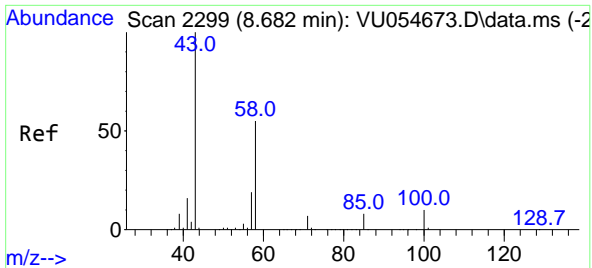
Tgt Ion: 83 Resp: 25795  
 Ion Ratio Lower Upper  
 83 100  
 55 0.5 67.1 100.7#  
 98 0.3 35.1 52.7#



#37  
 1,2-Dichloropropane  
 Concen: 0.450 ug/L  
 RT: 6.689 min Scan# 1679  
 Delta R.T. -0.096 min  
 Lab File: VU054682.D  
 Acq: 28 Jun 2023 16:17

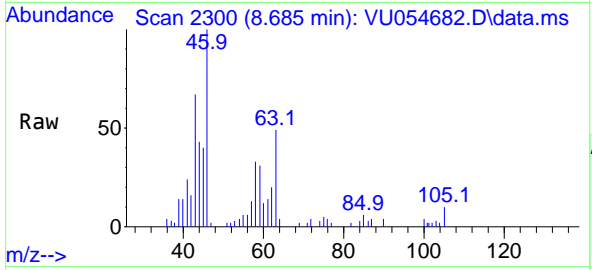
Tgt Ion: 63 Resp: 12845  
 Ion Ratio Lower Upper  
 63 100  
 112 0.8 3.0 4.6#





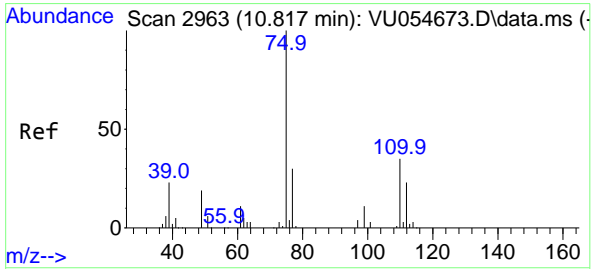
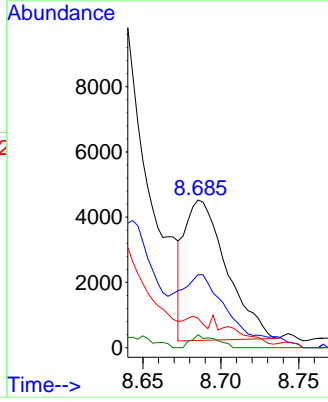
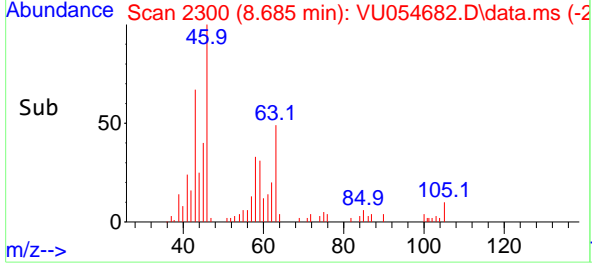
#48  
 2-Hexanone  
 Concen: 0.707 ug/L  
 RT: 8.685 min Scan# 21  
 Delta R.T. 0.006 min  
 Lab File: VU054682.D  
 Acq: 28 Jun 2023 16:17

Instrument : MSVOA\_U  
 ClientSampleId : C0C54

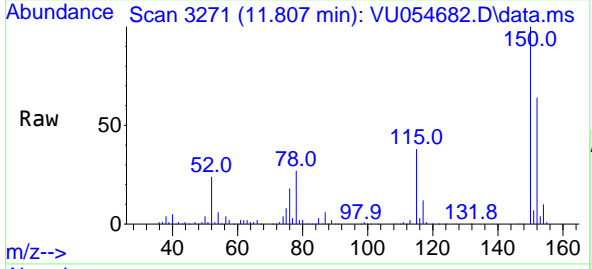


Tgt Ion: 43 Resp: 8031

Ion	Ratio	Lower	Upper
43	100		
58	60.2	45.2	67.8
57	3.4	15.8	23.6#
100	5.3	8.7	13.1#



#61  
 1,2,3-Trichloropropane  
 Concen: 1.250 ug/L  
 RT: 11.807 min Scan# 3271  
 Delta R.T. 0.987 min  
 Lab File: VU054682.D  
 Acq: 28 Jun 2023 16:17



Tgt Ion: 75 Resp: 16896

Ion	Ratio	Lower	Upper
75	100		
110	2.7	28.0	42.0#
77	33.4	25.4	38.2

