

Data Path : Z:\voasrv\HPCHEM1\MSVOA_U\Data\VU062824\
 Data File : VU059572.D
 Acq On : 27 Jun 2024 19:13
 Operator : MD/SY
 Sample : P3006-08DL 10X
 Misc : 25.0mL/MSVOA_U/WATER
 ALS Vial : 11 Sample Multiplier: 1

Instrument :
 MSVOA_U
 ClientSampleId :
 JMRH3DL

Quant Time: Jun 28 00:54:55 2024
 Quant Method : Z:\voasrv\HPCHEM1\MSVOA_U\Method\SFAMUTR061724WMA.M
 Quant Title : TRACE VOA SFAM1.0
 QLast Update : Fri Jun 28 00:50:04 2024
 Response via : Initial Calibration

Compound	R.T.	QIon	Response	Conc	Units	Dev(Min)

Internal Standards						
1) 1,4-Difluorobenzene	6.242	114	138139	5.000	ug/L	0.00
28) Chlorobenzene-d5	9.412	117	145925	5.000	ug/L	0.00
58) 1,4-Dichlorobenzene-d4	11.807	152	60481	5.000	ug/L	0.00
System Monitoring Compounds						
4) Vinyl Chloride-d3	1.592	65	40282	4.194	ug/L	0.00
Spiked Amount	5.000	Range 40 - 130	Recovery	=	83.800%	
7) Chloroethane-d5	1.907	69	40501	4.382	ug/L	0.00
Spiked Amount	5.000	Range 65 - 130	Recovery	=	87.600%	
11) 1,1-Dichloroethene-d2	2.557	65	17040	4.276	ug/L	0.00
Spiked Amount	5.000	Range 60 - 125	Recovery	=	85.600%	
20) 2-Butanone-d5	4.628	46	118886	60.086	ug/L	0.01
Spiked Amount	50.000	Range 40 - 130	Recovery	=	120.180%	
24) Chloroform-d	5.055	84	92700	4.702	ug/L	0.00
Spiked Amount	5.000	Range 70 - 125	Recovery	=	94.000%	
26) 1,2-Dichloroethane-d4	5.695	65	47385	4.989	ug/L	0.00
Spiked Amount	5.000	Range 70 - 130	Recovery	=	99.800%	
32) Benzene-d6	5.721	84	178345	4.441	ug/L	0.00
Spiked Amount	5.000	Range 70 - 125	Recovery	=	88.800%	
36) 1,2-Dichloropropane-d6	6.685	67	58675	4.768	ug/L	0.00
Spiked Amount	5.000	Range 60 - 140	Recovery	=	95.400%	
41) Toluene-d8	7.891	98	146778	3.931	ug/L	0.00
Spiked Amount	5.000	Range 70 - 130	Recovery	=	78.600%	
43) trans-1,3-Dichloroprop...	8.174	79	17146	4.449	ug/L	0.00
Spiked Amount	5.000	Range 55 - 130	Recovery	=	89.000%	
46) 2-Hexanone-d5	8.631	63	83637	52.236	ug/L	0.00
Spiked Amount	50.000	Range 45 - 130	Recovery	=	104.480%	
56) 1,1,2,2-Tetrachloroeth...	10.750	84	53554	5.267	ug/L	0.00
Spiked Amount	5.000	Range 65 - 120	Recovery	=	105.400%	
66) 1,2-Dichlorobenzene-d4	12.190	152	53741	4.992	ug/L	0.00
Spiked Amount	5.000	Range 80 - 120	Recovery	=	99.800%	

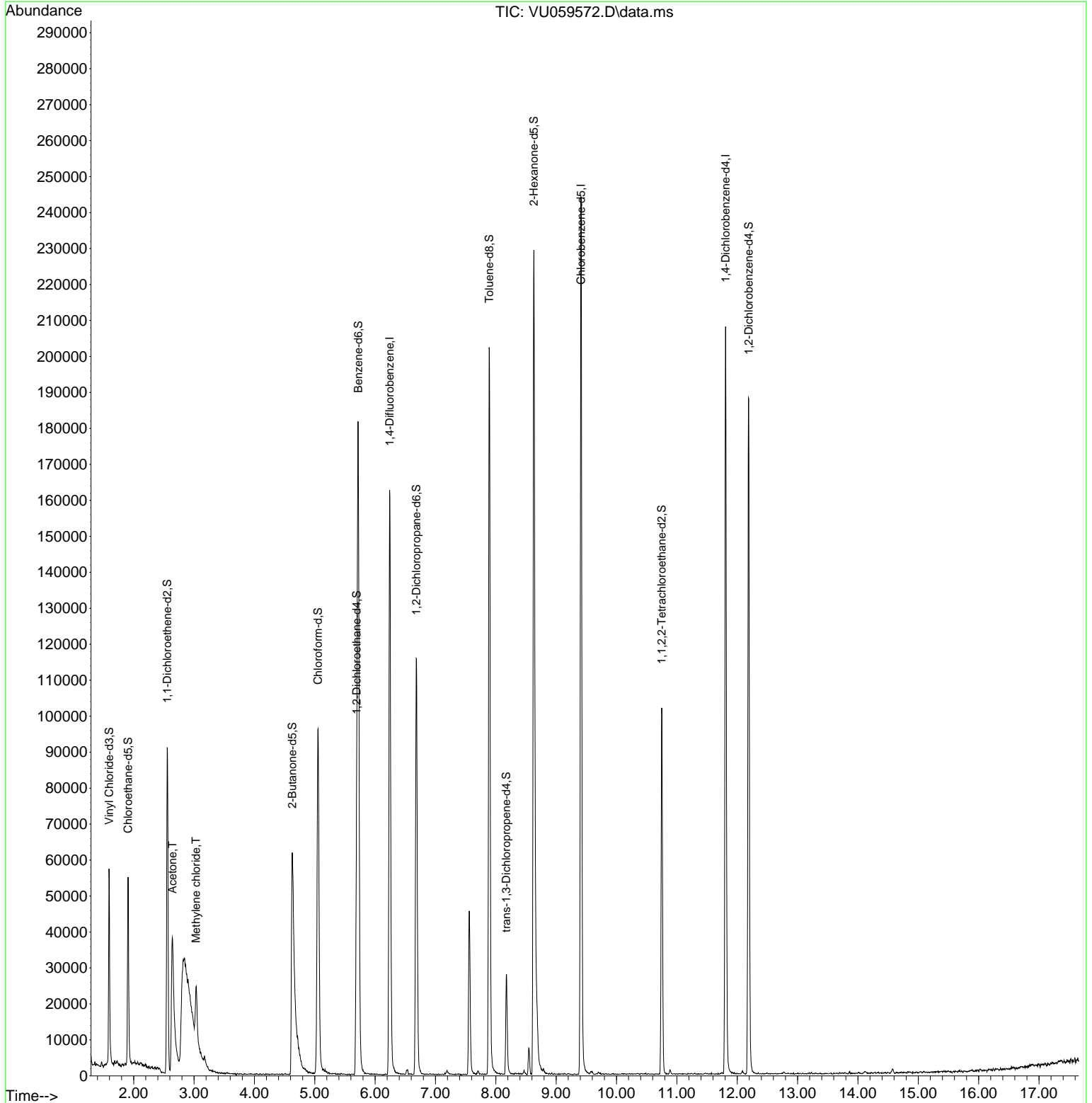
Target Compounds						Qvalue
13) Acetone	2.641	43	81475	63.479	ug/L	94
16) Methylene chloride	3.033	84	7556	0.651	ug/L	92

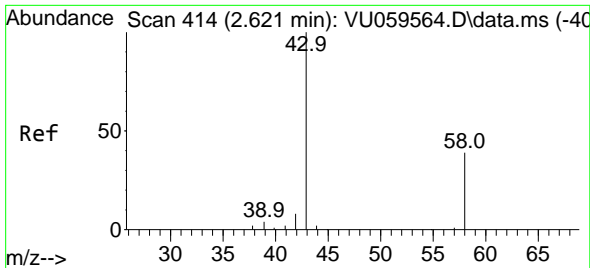
(#) = qualifier out of range (m) = manual integration (+) = signals summed

Data Path : Z:\voasrv\HPCHEM1\MSVOA_U\Data\VU062824\
 Data File : VU059572.D
 Acq On : 27 Jun 2024 19:13
 Operator : MD/SY
 Sample : P3006-08DL 10X
 Misc : 25.0mL/MSVOA_U/WATER
 ALS Vial : 11 Sample Multiplier: 1

Instrument :
 MSVOA_U
 ClientSampleId :
 JMRH3DL

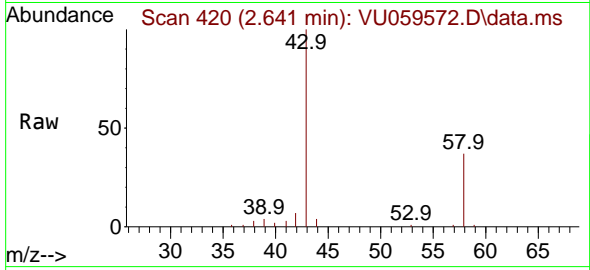
Quant Time: Jun 28 00:54:55 2024
 Quant Method : Z:\voasrv\HPCHEM1\MSVOA_U\Method\SFAMUTR061724WMA.M
 Quant Title : TRACE VOA SFAM1.0
 QLast Update : Fri Jun 28 00:50:04 2024
 Response via : Initial Calibration



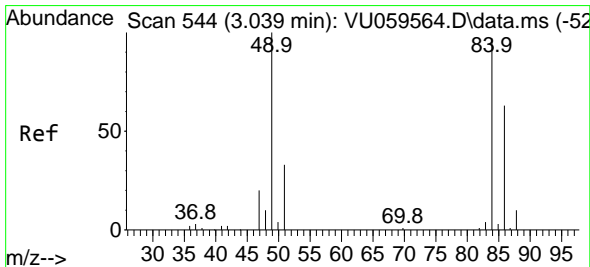
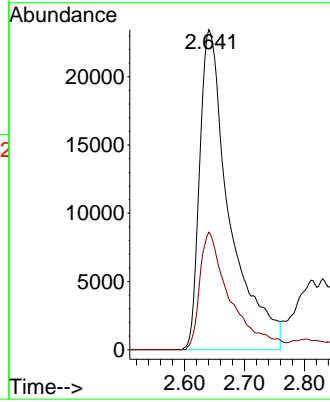
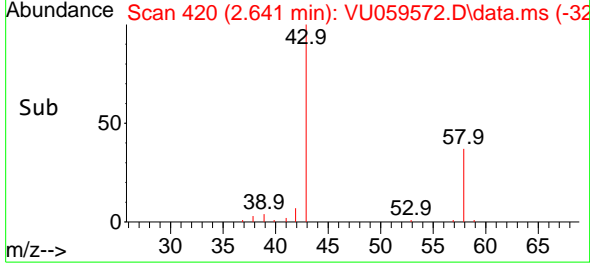


#13
 Acetone
 Concen: 63.479 ug/L
 RT: 2.641 min Scan# 413
 Delta R.T. 0.019 min
 Lab File: VU059572.D
 Acq: 27 Jun 2024 19:13

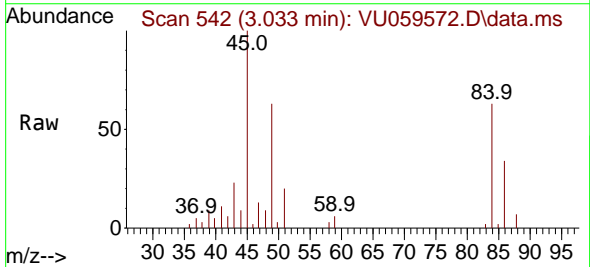
Instrument : MSVOA_U
 ClientSampleId : JMRH3DL



Tgt Ion: 43 Resp: 81475
 Ion Ratio Lower Upper
 43 100
 58 37.6 0.0 68.0



#16
 Methylene chloride
 Concen: 0.651 ug/L
 RT: 3.033 min Scan# 542
 Delta R.T. -0.006 min
 Lab File: VU059572.D
 Acq: 27 Jun 2024 19:13



Tgt Ion: 84 Resp: 7556
 Ion Ratio Lower Upper
 84 100
 86 55.1 42.1 78.1
 49 105.4 80.6 149.8

