

Data Path : Z:\voasrv\HPCHEM1\MSVOA\_U\Data\VU062824\  
 Data File : VU059597.D  
 Acq On : 28 Jun 2024 05:28  
 Operator : MD/SY  
 Sample : P3007-07  
 Misc : 25.0mL/MSVOA\_U/WATER  
 ALS Vial : 37 Sample Multiplier: 1

Instrument :  
 MSVOA\_U  
 ClientSampleId :  
 JMRF6

Quant Time: Jun 28 07:00:31 2024  
 Quant Method : Z:\voasrv\HPCHEM1\MSVOA\_U\Method\SFAMUTR061724WMA.M  
 Quant Title : TRACE VOA SFAM1.0  
 QLast Update : Fri Jun 28 02:08:17 2024  
 Response via : Initial Calibration

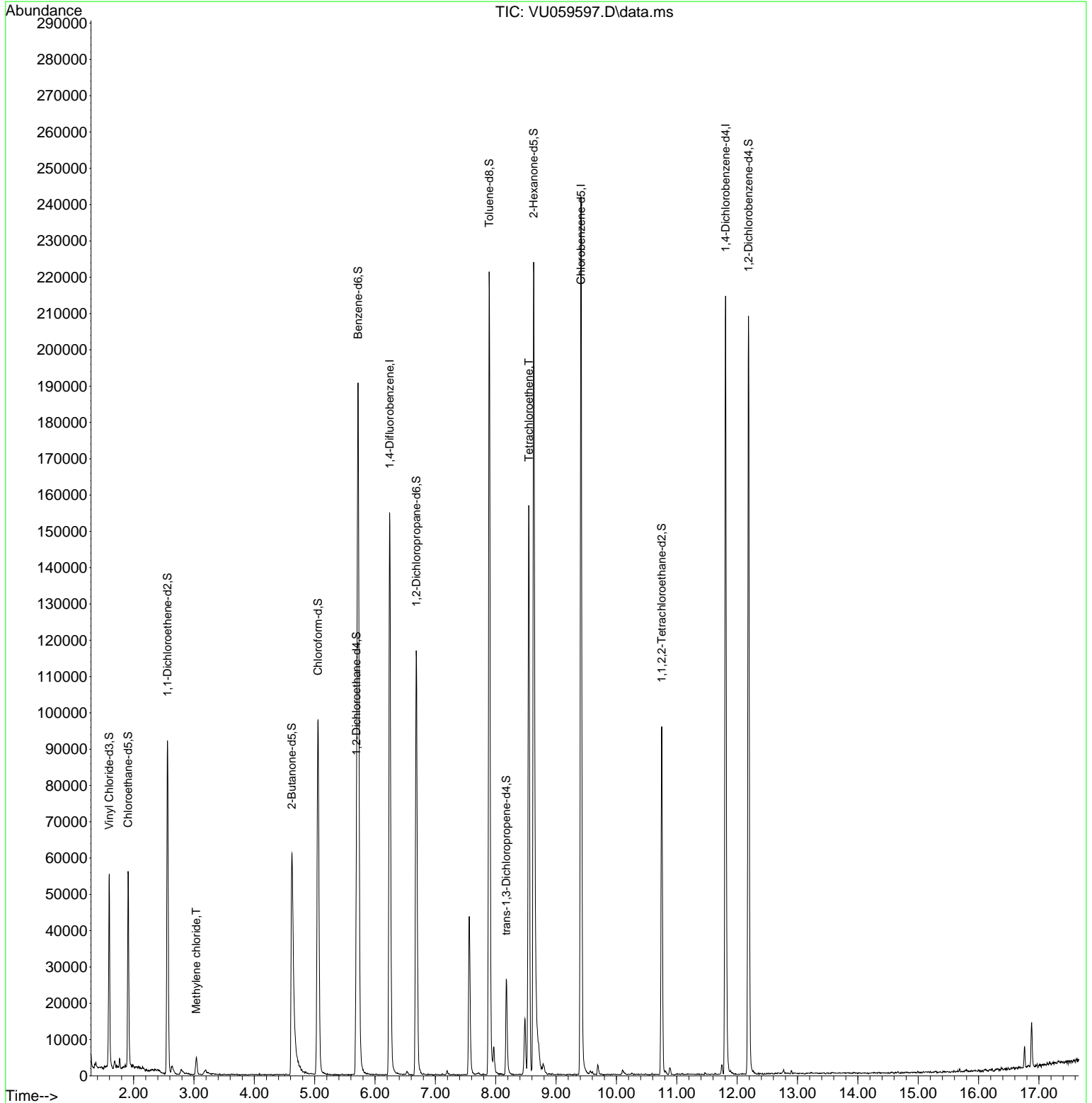
Compound	R.T.	QIon	Response	Conc	Units	Dev(Min)
-----						
Internal Standards						
1) 1,4-Difluorobenzene	6.242	114	135588	5.000	ug/L	0.00
28) Chlorobenzene-d5	9.412	117	144597	5.000	ug/L	0.00
58) 1,4-Dichlorobenzene-d4	11.807	152	62026	5.000	ug/L	0.00
System Monitoring Compounds						
4) Vinyl Chloride-d3	1.596	65	37216	3.947	ug/L	0.00
Spiked Amount	5.000	Range 40 - 130	Recovery	=	79.000%	
7) Chloroethane-d5	1.908	69	41620	4.588	ug/L	0.00
Spiked Amount	5.000	Range 65 - 130	Recovery	=	91.800%	
11) 1,1-Dichloroethene-d2	2.560	65	17069	4.364	ug/L	0.00
Spiked Amount	5.000	Range 60 - 125	Recovery	=	87.200%	
20) 2-Butanone-d5	4.621	46	102302	52.677	ug/L	0.00
Spiked Amount	50.000	Range 40 - 130	Recovery	=	105.360%	
24) Chloroform-d	5.055	84	94826	4.900	ug/L	0.00
Spiked Amount	5.000	Range 70 - 125	Recovery	=	98.000%	
26) 1,2-Dichloroethane-d4	5.692	65	46438	4.982	ug/L	0.00
Spiked Amount	5.000	Range 70 - 130	Recovery	=	99.600%	
32) Benzene-d6	5.718	84	188412	4.735	ug/L	0.00
Spiked Amount	5.000	Range 70 - 125	Recovery	=	94.600%	
36) 1,2-Dichloropropane-d6	6.682	67	59583	4.886	ug/L	0.00
Spiked Amount	5.000	Range 60 - 140	Recovery	=	97.800%	
41) Toluene-d8	7.891	98	159288	4.306	ug/L	0.00
Spiked Amount	5.000	Range 70 - 130	Recovery	=	86.200%	
43) trans-1,3-Dichloroprop...	8.174	79	16431	4.303	ug/L	0.00
Spiked Amount	5.000	Range 55 - 130	Recovery	=	86.000%	
46) 2-Hexanone-d5	8.628	63	79980	50.411	ug/L	0.00
Spiked Amount	50.000	Range 45 - 130	Recovery	=	100.820%	
56) 1,1,2,2-Tetrachloroeth...	10.750	84	49711	4.934	ug/L	0.00
Spiked Amount	5.000	Range 65 - 120	Recovery	=	98.600%	
66) 1,2-Dichlorobenzene-d4	12.187	152	58724	5.319	ug/L	0.00
Spiked Amount	5.000	Range 80 - 120	Recovery	=	106.400%	
-----						
Target Compounds						Qvalue
16) Methylene chloride	3.036	84	2324	0.204	ug/L	94
47) Tetrachloroethene	8.547	164	36494	3.955	ug/L	98
-----						

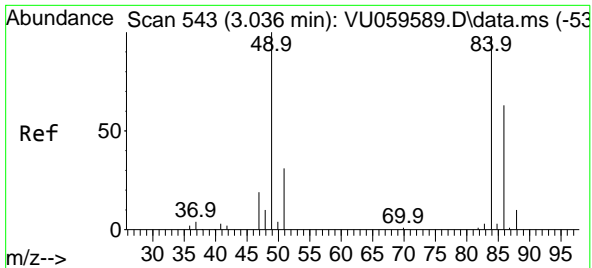
(#) = qualifier out of range (m) = manual integration (+) = signals summed

Data Path : Z:\voasrv\HPCHEM1\MSVOA\_U\Data\VU062824\  
 Data File : VU059597.D  
 Acq On : 28 Jun 2024 05:28  
 Operator : MD/SY  
 Sample : P3007-07  
 Misc : 25.0mL/MSVOA\_U/WATER  
 ALS Vial : 37 Sample Multiplier: 1

**Instrument :**  
 MSVOA\_U  
**ClientSampleId :**  
 JMRF6

Quant Time: Jun 28 07:00:31 2024  
 Quant Method : Z:\voasrv\HPCHEM1\MSVOA\_U\Method\SFAMUTR061724WMA.M  
 Quant Title : TRACE VOA SFAM1.0  
 QLast Update : Fri Jun 28 02:08:17 2024  
 Response via : Initial Calibration



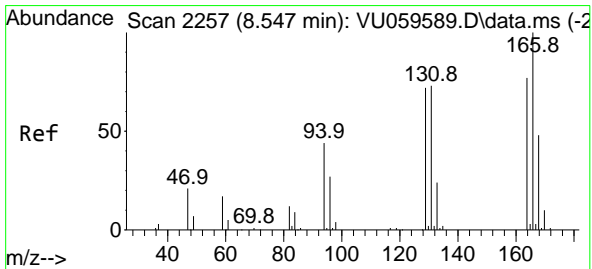
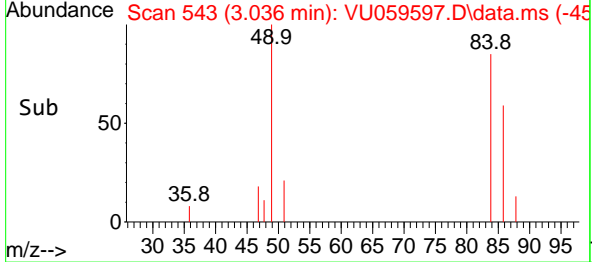
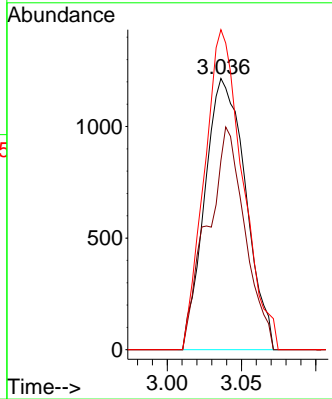
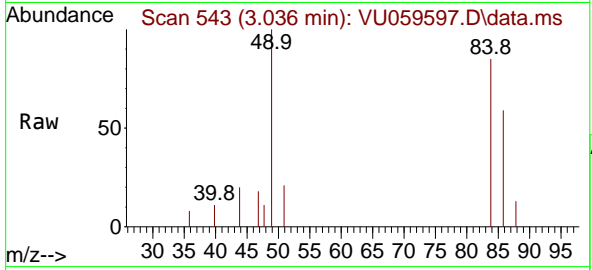


#16  
 Methylene chloride  
 Concen: 0.204 ug/L  
 RT: 3.036 min Scan# 54  
 Delta R.T. 0.000 min  
 Lab File: VU059597.D  
 Acq: 28 Jun 2024 05:28

Instrument : MSVOA\_U  
 ClientSampleId : JMRF6

Tgt Ion: 84 Resp: 2324

Ion	Ratio	Lower	Upper
84	100		
86	69.8	42.1	78.1
49	118.0	80.6	149.8



#47  
 Tetrachloroethene  
 Concen: 3.955 ug/L  
 RT: 8.547 min Scan# 2257  
 Delta R.T. 0.000 min  
 Lab File: VU059597.D  
 Acq: 28 Jun 2024 05:28

Tgt Ion: 164 Resp: 36494

Ion	Ratio	Lower	Upper
164	100		
129	97.5	70.8	131.4
131	92.8	64.8	120.3
166	132.9	91.1	169.1

