

Data Path : Z:\VOASRV\HPCHEM1\MSVOA U\DATA\VU062918\
 Data File : VU025076.D
 Acq On : 29 Jun 2018 17:51
 Operator : MD/SY
 Sample : J3766-12
 Misc : 5.0mL/MSVOA U/WATER
 ALS Vial : 17 Sample Multiplier: 1

Instrument :
 MSVOA_U
 ClientSampled :
 VHBLK02

Integration Parameters: LSCINT.P

Integrator: RTE
 Smoothing : OFF
 Sampling : 1
 Start Thrs: 0.2
 Stop Thrs : 0

Filtering: 5
 Min Area: 0 % of largest Peak
 Max Peaks: 100
 Peak Location: TOP

If leading or trailing edge < 100 prefer < Baseline drop else tangent >
 Peak separation: 5

Method : Z:\VOASRV\HPCHEM1\MSVOA_U\METHOD\SOMULM062918WMA.M
 Title : VOC Analysis

Signal : TIC

peak #	R.T. min	first scan	max scan	last scan	PK TY	peak height	corr. area	corr. % max.	% of total
1	0.616	4	8	17	rVB2	238	340	0.03%	0.003%
2	0.831	70	75	78	rBV2	269	296	0.02%	0.003%
3	0.912	97	100	105	rVB	253	211	0.02%	0.002%
4	0.957	105	114	117	rBV2	214	406	0.03%	0.004%
5	1.088	140	155	180	rBV	1087045	1268269	100.00%	11.615%
6	1.397	245	251	263	rVB	138238	148808	11.73%	1.363%
7	1.677	330	338	356	rVB	112609	148835	11.74%	1.363%
8	2.272	513	523	538	rVB	271628	414513	32.68%	3.796%
9	2.429	569	572	574	rBV2	357	231	0.02%	0.002%
10	2.442	574	576	582	rVB3	590	482	0.04%	0.004%
11	2.513	594	598	601	rBV3	695	449	0.04%	0.004%
12	2.532	601	604	607	rVV	470	261	0.02%	0.002%
13	2.577	615	618	623	rVB3	460	377	0.03%	0.003%
14	2.603	623	626	628	rBV2	446	358	0.03%	0.003%
15	2.703	653	657	659	rBV2	541	542	0.04%	0.005%
16	2.841	688	700	715	rVV3	6622	13208	1.04%	0.121%
17	3.281	831	837	839	rBV2	260	297	0.02%	0.003%
18	3.352	857	859	862	rVB	399	230	0.02%	0.002%
19	3.375	862	866	868	rBV2	488	354	0.03%	0.003%
20	3.465	890	894	895	rBV	295	227	0.02%	0.002%
21	3.616	939	941	946	rVB2	312	197	0.02%	0.002%
22	3.651	946	952	956	rBV2	315	366	0.03%	0.003%
23	3.725	972	975	977	rBV	260	183	0.01%	0.002%
24	3.809	997	1001	1008	rBV2	280	431	0.03%	0.004%
25	3.866	1013	1019	1022	rBV	359	356	0.03%	0.003%
26	3.950	1043	1045	1051	rVV3	225	242	0.02%	0.002%
27	4.111	1091	1095	1098	rVB2	298	210	0.02%	0.002%
28	4.175	1101	1115	1148	rBV	118133	316149	24.93%	2.895%
29	4.448	1197	1200	1205	rVB2	486	446	0.04%	0.004%
30	4.481	1207	1210	1213	rVB3	456	344	0.03%	0.003%
31	4.522	1222	1223	1230	rVB	476	365	0.03%	0.003%
32	4.551	1230	1232	1235	rBV	280	222	0.02%	0.002%
33	4.587	1239	1243	1246	rBV2	233	233	0.02%	0.002%
34	4.654	1246	1264	1288	rBV	207454	499241	39.36%	4.572%

Data Path : Z:\VOASRV\HPCHEM1\MSVOA U\DATA\VU062918\
 Data File : VU025076.D
 Acq On : 29 Jun 2018 17:51
 Operator : MD/SY
 Sample : J3766-12
 Misc : 5.0mL/MSVOA U/WATER
 ALS Vial : 17 Sample Multiplier: 1

Instrument :
 MSVOA_U
 ClientSampleId :
 VHBLK02

Integration Parameters: LSCINT.P

Integrator: RTE
 Smoothing : OFF
 Sampling : 1
 Start Thrs: 0.2
 Stop Thrs : 0

Filtering: 5
 Min Area: 0 % of largest Peak
 Max Peaks: 100
 Peak Location: TOP

If leading or trailing edge < 100 prefer < Baseline drop else tangent >
 Peak separation: 5

Method : Z:\VOASRV\HPCHEM1\MSVOA_U\METHOD\SOMULM062918WMA.M
 Title : VOC Analysis

35	4.883	1329	1335	1337	rBV3	1002	909	0.07%	0.008%
36	4.934	1347	1351	1354	rBV2	232	183	0.01%	0.002%
37	4.989	1362	1368	1370	rVV3	567	720	0.06%	0.007%
38	5.001	1370	1372	1378	rVB2	729	678	0.05%	0.006%
39	5.037	1378	1383	1385	rBV2	200	219	0.02%	0.002%
40	5.053	1385	1388	1392	rVV2	258	236	0.02%	0.002%
41	5.346	1454	1479	1513	rBV2	410718	1253465	98.83%	11.479%
42	5.503	1526	1528	1535	rVB3	529	350	0.03%	0.003%
43	5.747	1602	1604	1607	rBV3	334	236	0.02%	0.002%
44	5.821	1624	1627	1633	rVB2	236	229	0.02%	0.002%
45	5.889	1633	1648	1670	rBV	399466	790428	62.32%	7.239%
46	6.146	1723	1728	1732	rBV3	206	224	0.02%	0.002%
47	6.185	1732	1740	1751	rBV6	2647	5116	0.40%	0.047%
48	6.336	1771	1787	1821	rBV	283202	569644	44.92%	5.217%
49	6.455	1821	1824	1826	rBV2	643	459	0.04%	0.004%
50	6.715	1900	1905	1910	rBV2	257	312	0.02%	0.003%
51	6.802	1928	1932	1937	rVB2	222	246	0.02%	0.002%
52	6.834	1937	1942	1945	rBV	226	217	0.02%	0.002%
53	6.863	1949	1951	1955	rBV	336	242	0.02%	0.002%
54	6.969	1981	1984	1989	rVV	225	213	0.02%	0.002%
55	7.140	2033	2037	2040	rBV2	354	296	0.02%	0.003%
56	7.233	2053	2066	2085	rBV	166592	292294	23.05%	2.677%
57	7.477	2139	2142	2148	rVV3	211	286	0.02%	0.003%
58	7.567	2157	2170	2191	rBV	586173	1023298	80.68%	9.371%
59	7.706	2212	2213	2216	rVB2	512	182	0.01%	0.002%
60	7.722	2216	2218	2221	rVV	372	278	0.02%	0.003%
61	7.853	2247	2259	2277	rBV	113802	194911	15.37%	1.785%
62	7.969	2292	2295	2301	rVV2	552	515	0.04%	0.005%
63	8.040	2315	2317	2320	rVB2	367	197	0.02%	0.002%
64	8.143	2345	2349	2351	rBV	308	212	0.02%	0.002%
65	8.178	2351	2360	2362	rBV2	675	824	0.06%	0.008%
66	8.236	2371	2378	2385	rBV5	2315	3130	0.25%	0.029%
67	8.313	2390	2402	2434	rBV	387785	676096	53.31%	6.192%
68	8.622	2492	2498	2502	rVB2	666	645	0.05%	0.006%
69	8.860	2569	2572	2579	rVB2	277	303	0.02%	0.003%
70	8.905	2582	2586	2589	rBV2	267	267	0.02%	0.002%
71	8.972	2603	2607	2612	rVB	316	392	0.03%	0.004%

Data Path : Z:\VOASRV\HPCHEM1\MSVOA U\DATA\VU062918\
 Data File : VU025076.D
 Acq On : 29 Jun 2018 17:51
 Operator : MD/SY
 Sample : J3766-12
 Misc : 5.0mL/MSVOA U/WATER
 ALS Vial : 17 Sample Multiplier: 1

Instrument :
 MSVOA_U
 ClientSampleId :
 VHBLK02

Integration Parameters: LSCINT.P

Integrator: RTE
 Smoothing : OFF
 Sampling : 1
 Start Thrs: 0.2
 Stop Thrs : 0

Filtering: 5
 Min Area: 0 % of largest Peak
 Max Peaks: 100
 Peak Location: TOP

If leading or trailing edge < 100 prefer < Baseline drop else tangent >
 Peak separation: 5

Method : Z:\VOASRV\HPCHEM1\MSVOA_U\METHOD\SOMULM062918WMA.M
 Title : VOC Analysis

72	9.005	2612	2617	2620	rBV2	264	281	0.02%	0.003%
73	9.091	2632	2644	2663	rBV	556175	912199	71.92%	8.354%
74	9.262	2694	2697	2701	rBV	441	374	0.03%	0.003%
75	9.387	2727	2736	2737	rBV	487	569	0.04%	0.005%
76	9.461	2756	2759	2763	rBV	327	275	0.02%	0.003%
77	9.728	2838	2842	2843	rBV	255	210	0.02%	0.002%
78	9.802	2862	2865	2867	rBV	348	225	0.02%	0.002%
79	10.021	2928	2933	2939	rVB2	227	290	0.02%	0.003%
80	10.062	2943	2946	2953	rVB	324	330	0.03%	0.003%
81	10.175	2978	2981	2987	rVB2	270	200	0.02%	0.002%
82	10.320	3023	3026	3031	rBV3	437	463	0.04%	0.004%
83	10.435	3050	3062	3083	rBV	401436	636341	50.17%	5.827%
84	10.612	3111	3117	3125	rVB3	1108	1265	0.10%	0.012%
85	10.976	3227	3230	3231	rBV	352	201	0.02%	0.002%
86	11.021	3237	3244	3249	rVB2	382	595	0.05%	0.005%
87	11.197	3297	3299	3304	rBV2	279	195	0.02%	0.002%
88	11.255	3312	3317	3322	rVB2	357	473	0.04%	0.004%
89	11.284	3322	3326	3329	rBV2	362	317	0.02%	0.003%
90	11.371	3347	3353	3356	rBV	415	416	0.03%	0.004%
91	11.487	3376	3389	3409	rBV	506638	816814	64.40%	7.480%
92	11.670	3438	3446	3447	rBV2	357	431	0.03%	0.004%
93	11.763	3471	3475	3477	rBV3	517	317	0.02%	0.003%
94	11.863	3493	3506	3524	rBV	565252	908553	71.64%	8.320%
95	12.021	3552	3555	3559	rVB2	470	329	0.03%	0.003%
96	12.188	3601	3607	3615	rBV2	495	735	0.06%	0.007%
97	12.921	3832	3835	3838	rBV2	369	308	0.02%	0.003%
98	13.606	4046	4048	4055	rBV2	285	247	0.02%	0.002%
99	14.326	4270	4272	4275	rVB	345	190	0.01%	0.002%
100	14.458	4310	4313	4317	rBV2	532	422	0.03%	0.004%

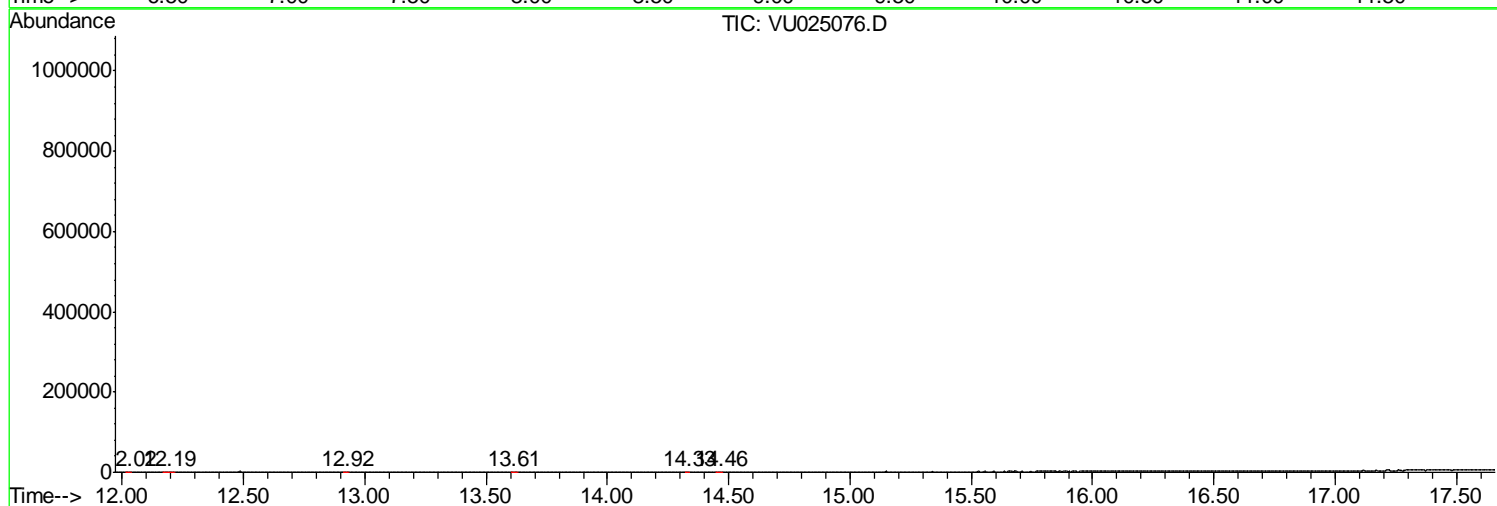
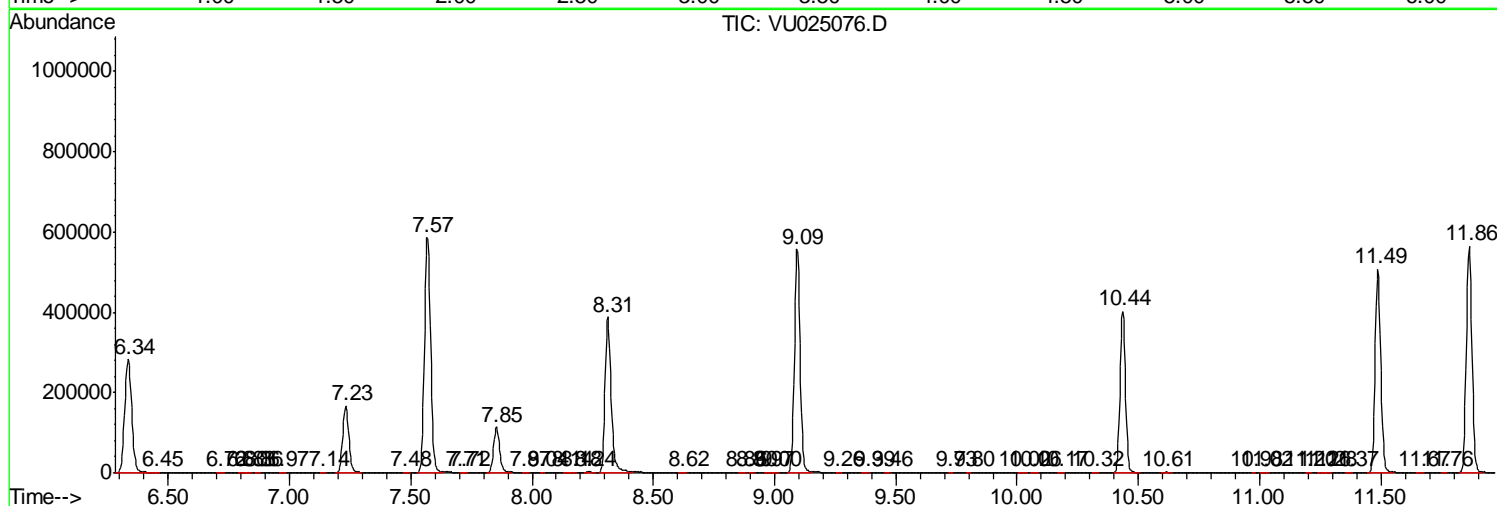
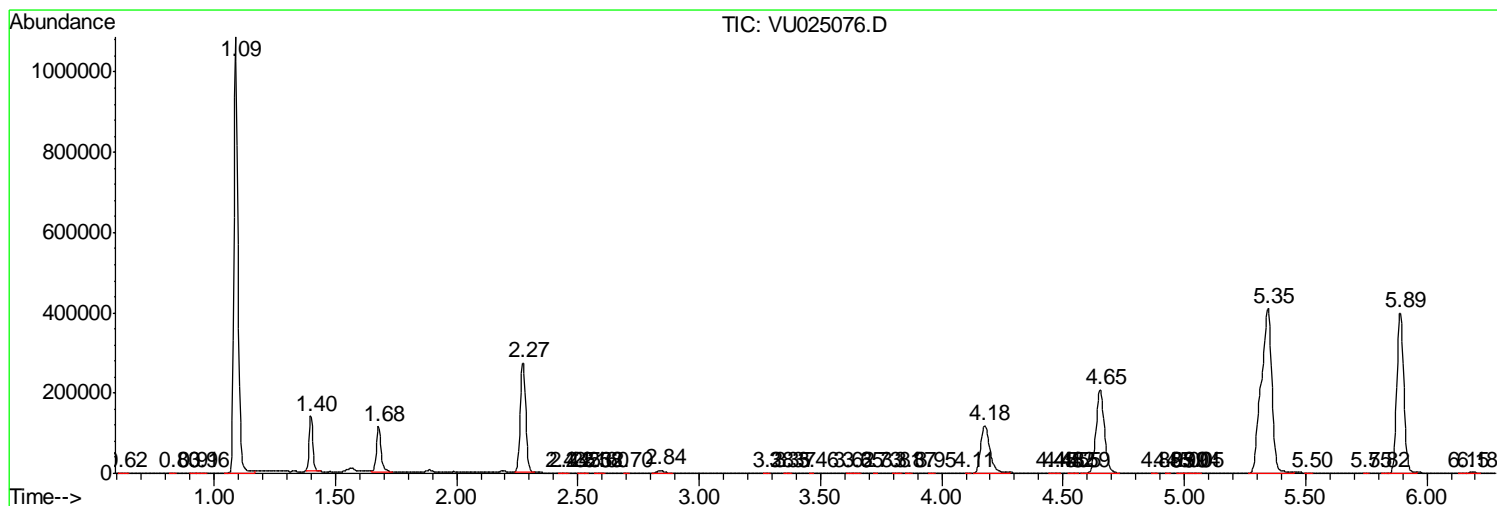
Sum of corrected areas: 10919696

Data Path : Z:\VOASRV\HPCHEM1\MSVOA U\DATA\VU062918\
 Data File : VU025076.D
 Acq On : 29 Jun 2018 17:51
 Operator : MD/SY
 Sample : J3766-12
 Misc : 5.0mL/MSVOA U/WATER
 ALS Vial : 17 Sample Multiplier: 1

Instrument :
 MSVOA_U
ClientSampled :
 VHBLK02

Quant Method : Z:\VOASRV\HPCHEM1\MSVOA_U\METHOD\SOMULM062918WMA.M
 Quant Title : VOC Analysis

TIC Library : C:\DATABASE\NIST11.L
 TIC Integration Parameters: LSCINT.P



Data Path : Z:\VOASRV\HPCHEM1\MSVOA_U\DATA\VU062918\
Data File : VU025076.D
Acq On : 29 Jun 2018 17:51
Operator : MD/SY
Sample : J3766-12
Misc : 5.0mL/MSVOA_U/WATER
ALS Vial : 17 Sample Multiplier: 1

Instrument :
MSVOA_U
ClientSampleId :
VHBLK02

Quant Method : Z:\VOASRV\HPCHEM1\MSVOA_U\METHOD\SOMULM062918WMA.M
Quant Title : VOC Analysis

TIC Library : C:\DATABASE\NIST11.L
TIC Integration Parameters: LSCINT.P

No Library Search Compounds Detected

Data Path : Z:\VOASRV\HPCHEM1\MSVOA_U\DATA\VU062918\
Data File : VU025076.D
Acq On : 29 Jun 2018 17:51
Operator : MD/SY
Sample : J3766-12
Misc : 5.0mL/MSVOA_U/WATER
ALS Vial : 17 Sample Multiplier: 1

Instrument :
MSVOA_U
ClientSampleId :
VHBLK02

Quant Method : Z:\VOASRV\HPCHEM1\MSVOA_U\METHOD\SOMULM062918WMA.M
Quant Title : VOC Analysis

TIC Library : C:\DATABASE\NIST11.L
TIC Integration Parameters: LSCINT.P

TIC Top Hit name	RT	EstConc	Units	Response	--Internal Standard--			
					#	RT	Resp	Conc
