

Data Path : Z:\VOASRV\HPCHEM1\MSVOA U\DATA\VU062920\
 Data File : VU039200.D
 Acq On : 29 Jun 2020 18:41
 Operator : SY/MD
 Sample : L3104-13
 Misc : 25.0mL/MSVOA U/WATER
 ALS Vial : 1 Sample Multiplier: 1

Instrument :
 MSVOA_U
 ClientSampled :
 F9Q72

Integration Parameters: rteint.p
 Integrator: RTE
 Smoothing : ON Filtering: 5
 Sampling : 1 Min Area: 3 % of largest Peak
 Start Thrs: 0.1 Max Peaks: 100
 Stop Thrs : 0 Peak Location: TOP

If leading or trailing edge < 100 prefer < Baseline drop else tangent >
 Peak separation: 5

Method : Z:\VOASRV\HPCHEM1\MSVOA_U\METHOD\SOMUTR062920WMA.M
 Title : TRACE VOA SOM01.0

Signal : TIC

| peak # | R.T. min | first scan | max scan | last scan | PK TY | peak height | corr. area | corr. % max. | % of total |
|--------|----------|------------|----------|-----------|-------|-------------|------------|--------------|------------|
| 1 | 1.613 | 78 | 85 | 98 | rVB | 82990 | 95280 | 7.44% | 1.284% |
| 2 | 1.932 | 176 | 184 | 198 | rVB | 83682 | 105834 | 8.27% | 1.426% |
| 3 | 2.594 | 378 | 390 | 406 | rBV | 153788 | 253871 | 19.83% | 3.421% |
| 4 | 4.677 | 1019 | 1038 | 1083 | rBV2 | 148437 | 530662 | 41.44% | 7.151% |
| 5 | 5.102 | 1153 | 1170 | 1195 | rBV2 | 172828 | 400105 | 31.25% | 5.392% |
| 6 | 5.758 | 1351 | 1374 | 1395 | rBV3 | 310711 | 827476 | 64.62% | 11.151% |
| 7 | 6.279 | 1520 | 1536 | 1559 | rBV | 285645 | 529238 | 41.33% | 7.132% |
| 8 | 6.571 | 1612 | 1627 | 1640 | rVB7 | 15584 | 35638 | 2.78% | 0.480% |
| 9 | 6.719 | 1655 | 1673 | 1692 | rBV2 | 203803 | 399729 | 31.22% | 5.387% |
| 10 | 7.591 | 1931 | 1944 | 1956 | rBV | 77004 | 135500 | 10.58% | 1.826% |
| 11 | 7.922 | 2032 | 2047 | 2062 | rBV | 331876 | 567654 | 44.33% | 7.650% |
| 12 | 8.201 | 2123 | 2134 | 2151 | rBV | 53531 | 92970 | 7.26% | 1.253% |
| 13 | 8.658 | 2260 | 2276 | 2316 | rBV2 | 612233 | 1280496 | 100.00% | 17.256% |
| 14 | 9.433 | 2504 | 2517 | 2544 | rBV | 406805 | 682829 | 53.33% | 9.202% |
| 15 | 10.770 | 2920 | 2933 | 2948 | rBV | 172905 | 276969 | 21.63% | 3.732% |
| 16 | 11.822 | 3246 | 3260 | 3275 | rBV | 373345 | 601053 | 46.94% | 8.100% |
| 17 | 12.076 | 3328 | 3339 | 3352 | rBV7 | 11233 | 22288 | 1.74% | 0.300% |
| 18 | 12.204 | 3366 | 3379 | 3399 | rVB | 356031 | 582897 | 45.52% | 7.855% |

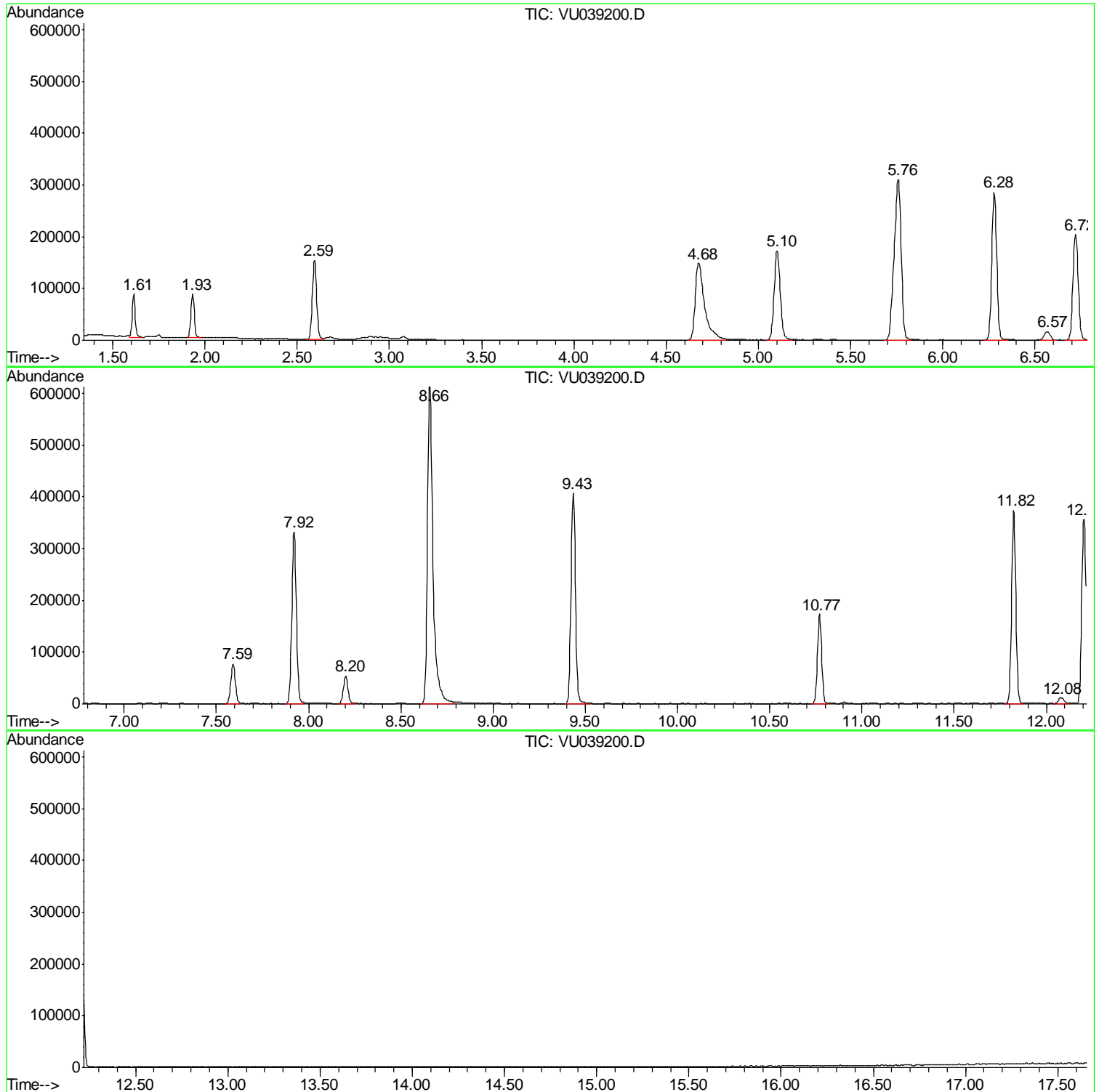
Sum of corrected areas: 7420489

Data Path : Z:\VOASRV\HPCHEM1\MSVOA U\DATA\VU062920\
Data File : VU039200.D
Acq On : 29 Jun 2020 18:41
Operator : SY/MD
Sample : L3104-13
Misc : 25.0mL/MSVOA U/WATER
ALS Vial : 1 Sample Multiplier: 1

Instrument :
MSVOA_U
ClientSampled :
F9Q72

Quant Method : Z:\VOASRV\HPCHEM1\MSVOA_U\METHOD\SOMUTR062920WMA.M
Quant Title : TRACE VOA SOM01.0

TIC Library : C:\DATABASE\NIST11.L
TIC Integration Parameters: LSCINT.P



Data Path : Z:\VOASRV\HPCHEM1\MSVOA_U\DATA\VU062920\
Data File : VU039200.D
Acq On : 29 Jun 2020 18:41
Operator : SY/MD
Sample : L3104-13
Misc : 25.0mL/MSVOA_U/WATER
ALS Vial : 1 Sample Multiplier: 1

Instrument :
MSVOA_U
ClientSampled :
F9Q72

Quant Method : Z:\VOASRV\HPCHEM1\MSVOA_U\METHOD\SOMUTR062920WMA.M
Quant Title : TRACE VOA SOM01.0

TIC Library : C:\DATABASE\NIST11.L
TIC Integration Parameters: LSCINT.P

No Library Search Compounds Detected

Data Path : Z:\VOASRV\HPCHEM1\MSVOA_U\DATA\VU062920\
Data File : VU039200.D
Acq On : 29 Jun 2020 18:41
Operator : SY/MD
Sample : L3104-13
Misc : 25.0mL/MSVOA_U/WATER
ALS Vial : 1 Sample Multiplier: 1

Instrument :
MSVOA_U
ClientSampleId :
F9Q72

Quant Method : Z:\VOASRV\HPCHEM1\MSVOA_U\METHOD\SOMUTR062920WMA.M
Quant Title : TRACE VOA SOM01.0

TIC Library : C:\DATABASE\NIST11.L
TIC Integration Parameters: LSCINT.P

| TIC Top Hit name | RT | EstConc | Units | Response | --Internal Standard-- | | | |
|------------------|----|---------|-------|----------|-----------------------|----|------|------|
| | | | | | # | RT | Resp | Conc |
