

Data Path : Z:\voasrv\HPCHEM1\MSVOA_U\Data\VU062924\
 Data File : VU059619.D
 Acq On : 28 Jun 2024 14:43
 Operator : MD/SY
 Sample : P3006-21DL 5X
 Misc : 25.0mL/MSVOA_U/WATER
 ALS Vial : 7 Sample Multiplier: 1

Instrument :
 MSVOA_U
 ClientSampleId :
 JMRJ7DL

Integration Parameters: rteint.p

Integrator: RTE
 Smoothing : ON Filtering: 5
 Sampling : 1 Min Area: 3 % of largest Peak
 Start Thrs: 0.1 Max Peaks: 100
 Stop Thrs : 0 Peak Location: TOP

If leading or trailing edge < 100 prefer < Baseline drop else tangent >
 Peak separation: 5

Method : Z:\voasrv\HPCHEM1\MSVOA_U\Method\SFAMUTR061724WMA.M
 Title : TRACE VOA SFAM1.0

Signal : TIC: VU059619.D\data.ms

peak #	R.T. min	first scan	max scan	last scan	PK TY	peak height	corr. area	corr. % max.	% of total
1	1.596	86	95	113	rVB	52478	62154	11.91%	1.271%
2	1.907	184	192	210	rVB	54598	75491	14.46%	1.544%
3	2.560	384	395	408	rBV	94252	153723	29.45%	3.144%
4	2.634	408	418	452	rVV	50829	124487	23.85%	2.546%
5	2.814	452	474	527	rBV2	36725	240155	46.01%	4.912%
6	3.039	532	544	560	rVB	49604	96739	18.53%	1.979%
7	3.184	576	589	602	rBV	2966	7571	1.45%	0.155%
8	4.624	1024	1037	1062	rBV	73105	218748	41.91%	4.474%
9	5.055	1149	1171	1192	rBV2	102923	243323	46.62%	4.977%
10	5.718	1355	1377	1410	rBV2	198711	519760	99.58%	10.632%
11	6.242	1525	1540	1565	rBV	171849	335518	64.28%	6.863%
12	6.682	1665	1677	1703	rBV	124337	241962	46.36%	4.949%
13	7.560	1939	1950	1975	rBV2	50005	91157	17.46%	1.865%
14	7.891	2041	2053	2073	rBV	234325	410823	78.71%	8.403%
15	8.177	2131	2142	2157	rBV2	30222	53161	10.18%	1.087%
16	8.547	2247	2257	2271	rBV2	67973	112659	21.58%	2.304%
17	8.627	2271	2282	2311	rBV	273030	521973	100.00%	10.677%
18	9.412	2513	2526	2553	rBV	257530	441644	84.61%	9.034%
19	10.750	2931	2942	2968	rBV	106124	175849	33.69%	3.597%
20	11.807	3260	3271	3290	rBV	239351	390329	74.78%	7.984%
21	12.187	3377	3389	3416	rBV3	215011	371555	71.18%	7.600%

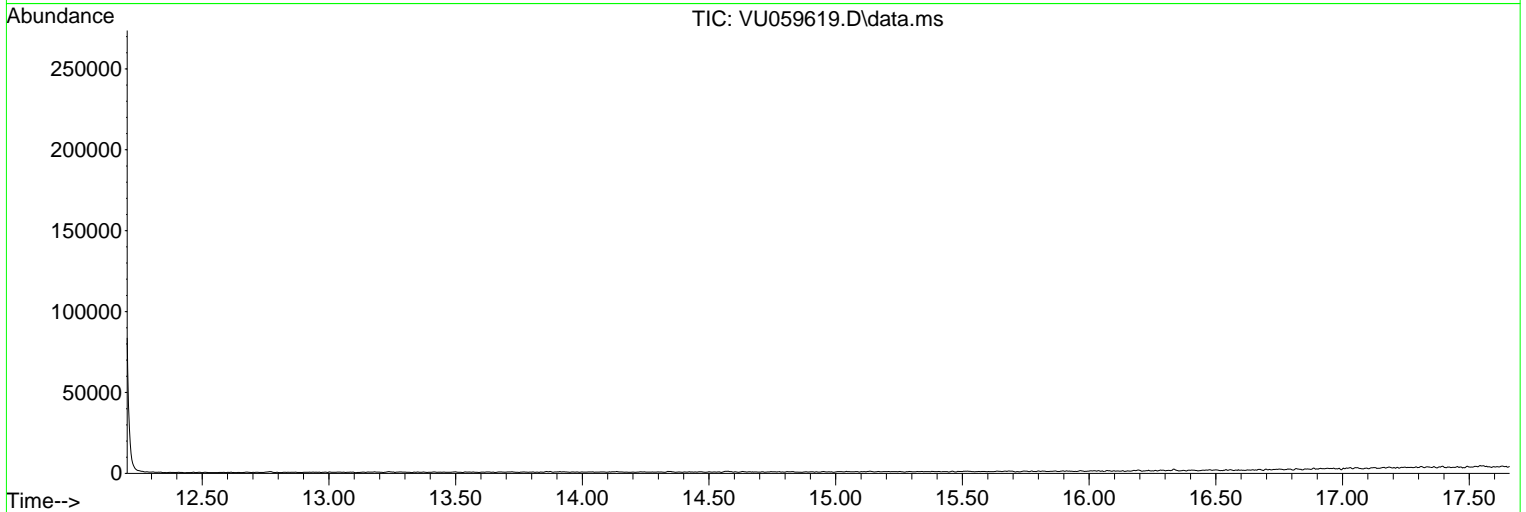
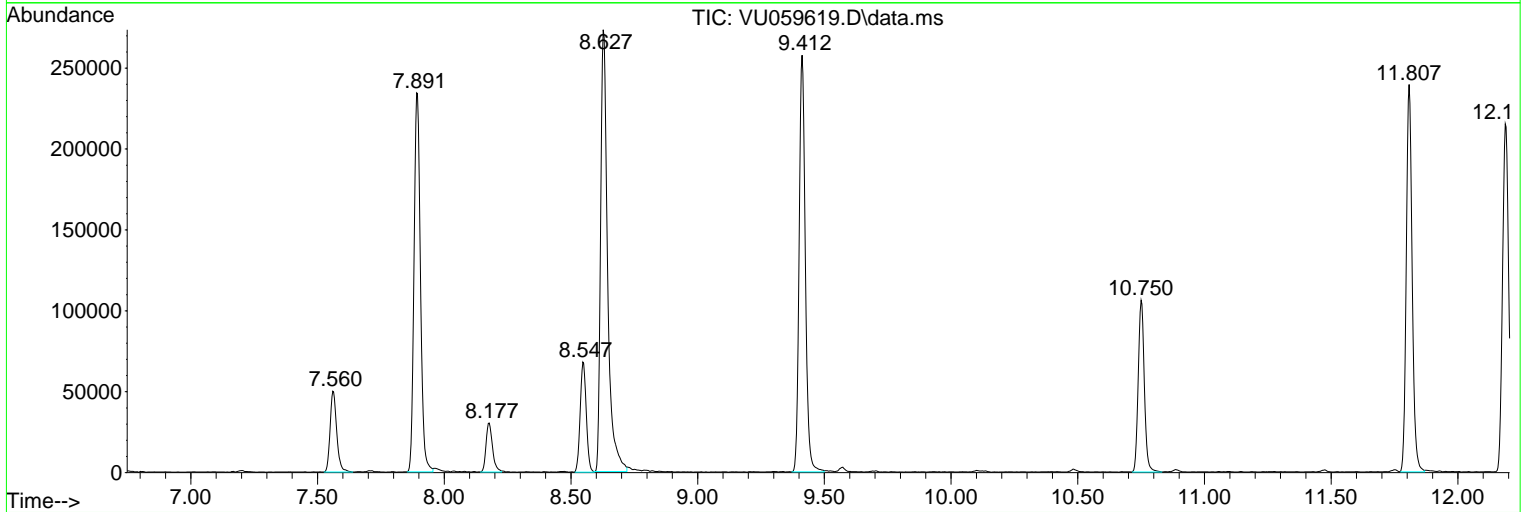
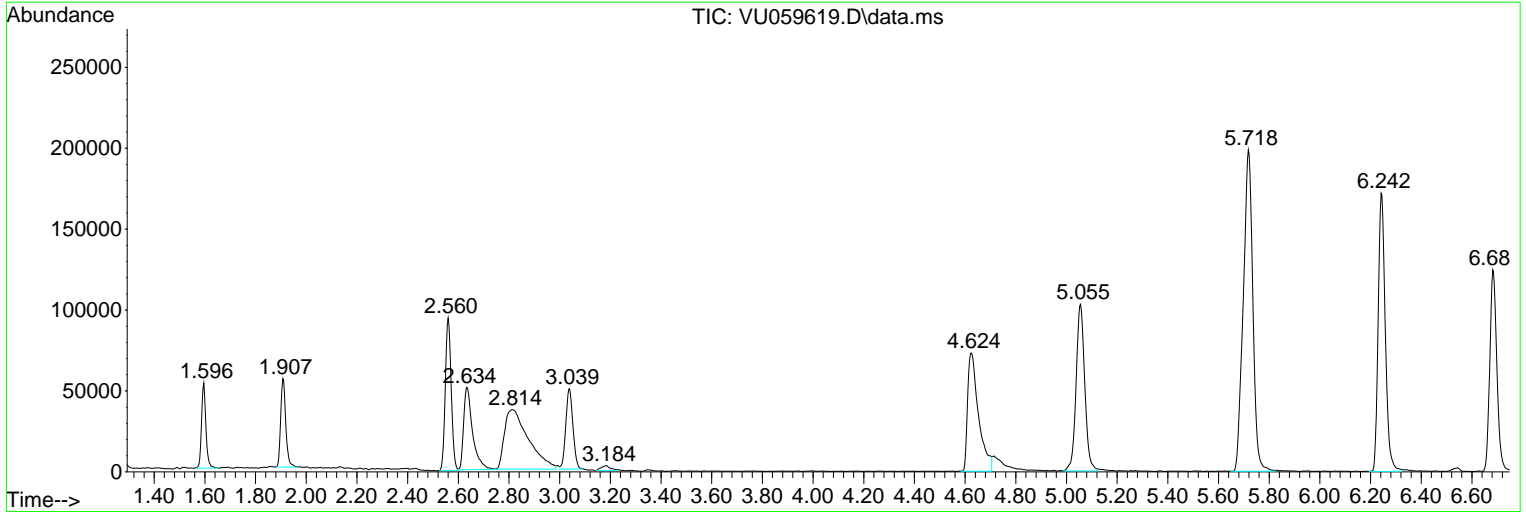
Sum of corrected areas: 4888781

Data Path : Z:\voasrv\HPCHEM1\MSVOA_U\Data\VU062924\
 Data File : VU059619.D
 Acq On : 28 Jun 2024 14:43
 Operator : MD/SY
 Sample : P3006-21DL 5X
 Misc : 25.0mL/MSVOA_U/WATER
 ALS Vial : 7 Sample Multiplier: 1

Instrument :
 MSVOA_U
 ClientSampleId :
 JMRJ7DL

Quant Method : Z:\voasrv\HPCHEM1\MSVOA_U\Method\SFAMUTR061724WMA.M
 Quant Title : TRACE VOA SFAM1.0

TIC Library : C:\Database\NIST20.L
 TIC Integration Parameters: LSCINT.P



Data Path : Z:\voasrv\HPCHEM1\MSVOA_U\Data\VU062924\
 Data File : VU059619.D
 Acq On : 28 Jun 2024 14:43
 Operator : MD/SY
 Sample : P3006-21DL 5X
 Misc : 25.0mL/MSVOA_U/WATER
 ALS Vial : 7 Sample Multiplier: 1

Instrument :
 MSVOA_U
 ClientSampleId :
 JMRJ7DL

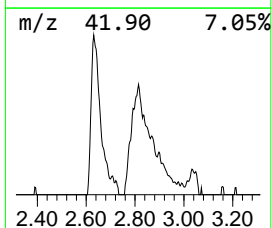
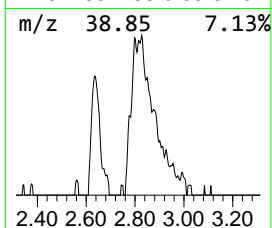
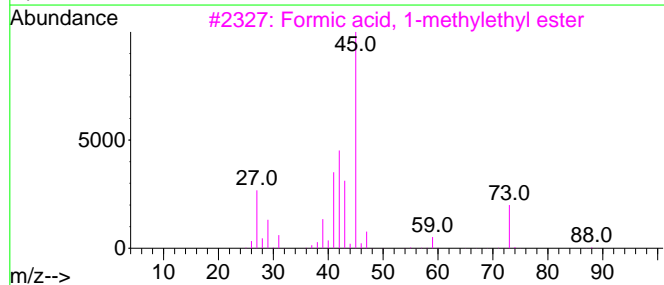
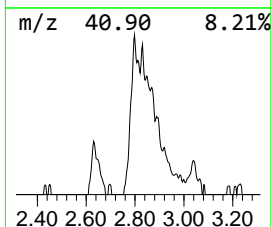
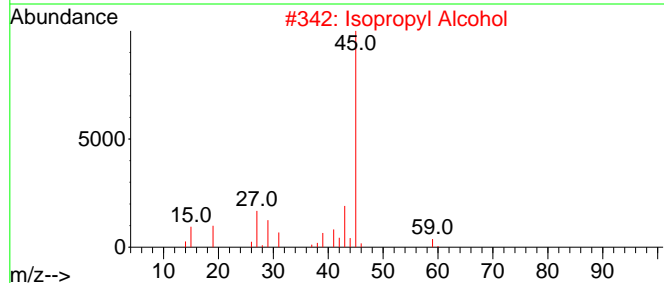
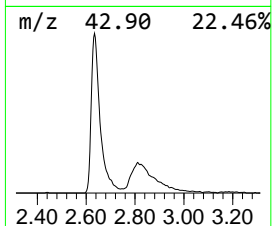
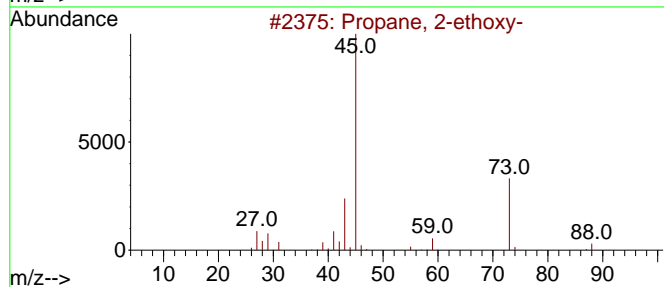
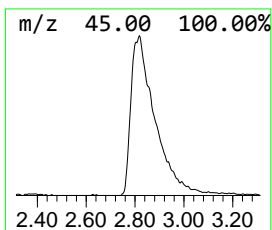
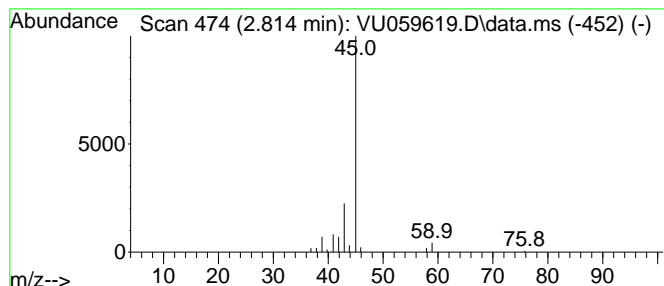
Quant Method : Z:\voasrv\HPCHEM1\MSVOA_U\Method\SFAMUTR061724WMA.M
 Quant Title : TRACE VOA SFAM1.0

TIC Library : C:\Database\NIST20.L
 TIC Integration Parameters: LSCINT.P

 Peak Number 1 unknown-01 Concentration Rank 1

R.T.	EstConc	Area	Relative to ISTD	R.T.
2.814	3.58 ug/L	240155	1,4-Difluorobenzene	6.245

Hit#	of 5	Tentative ID	MW	MolForm	CAS#	Qual
1		Propane, 2-ethoxy-	88	C5H12O	000625-54-7	43
2		Isopropyl Alcohol	60	C3H8O	000067-63-0	43
3		Formic acid, 1-methylethyl ester	88	C4H8O2	000625-55-8	43
4		Propane, 2-ethoxy-	88	C5H12O	000625-54-7	43
5		Propane, 2-ethoxy-	88	C5H12O	000625-54-7	9



Data Path : Z:\voasrv\HPCHEM1\MSVOA_U\Data\VU062924\
Data File : VU059619.D
Acq On : 28 Jun 2024 14:43
Operator : MD/SY
Sample : P3006-21DL 5X
Misc : 25.0mL/MSVOA_U/WATER
ALS Vial : 7 Sample Multiplier: 1

Instrument :
MSVOA_U
ClientSampleId :
JMRJ7DL

Quant Method : Z:\voasrv\HPCHEM1\MSVOA_U\Method\SFAMUTR061724WMA.M
Quant Title : TRACE VOA SFAM1.0

TIC Library : C:\Database\NIST0.L
TIC Integration Parameters: LSCINT.P

TIC Top Hit name	RT	EstConc	Units	Response	--Internal Standard--			
					#	RT	Resp	Conc
unknown-01	2.814	3.6	ug/L	240155	1	6.245	335518	5.0