

Data Path : Z:\VOASRV\HPCHEM1\MSVOA U\DATA\VU063018\  
 Data File : VU025121.D  
 Acq On : 01 Jul 2018 05:44  
 Operator : MD/SY  
 Sample : J3804-07  
 Misc : 5.0mL/MSVOA U/WATER  
 ALS Vial : 47 Sample Multiplier: 1

Instrument :  
 MSVOA\_U  
 ClientSampleId :  
 GPW-01

Quant Time: Jul 02 08:18:39 2018  
 Quant Method : Z:\VOASRV\HPCHEM1\MSVOA\_U\METHOD\82U061318W.M  
 Quant Title : SW846 8260  
 QLast Update : Wed Jun 13 13:55:26 2018  
 Response via : Initial Calibration

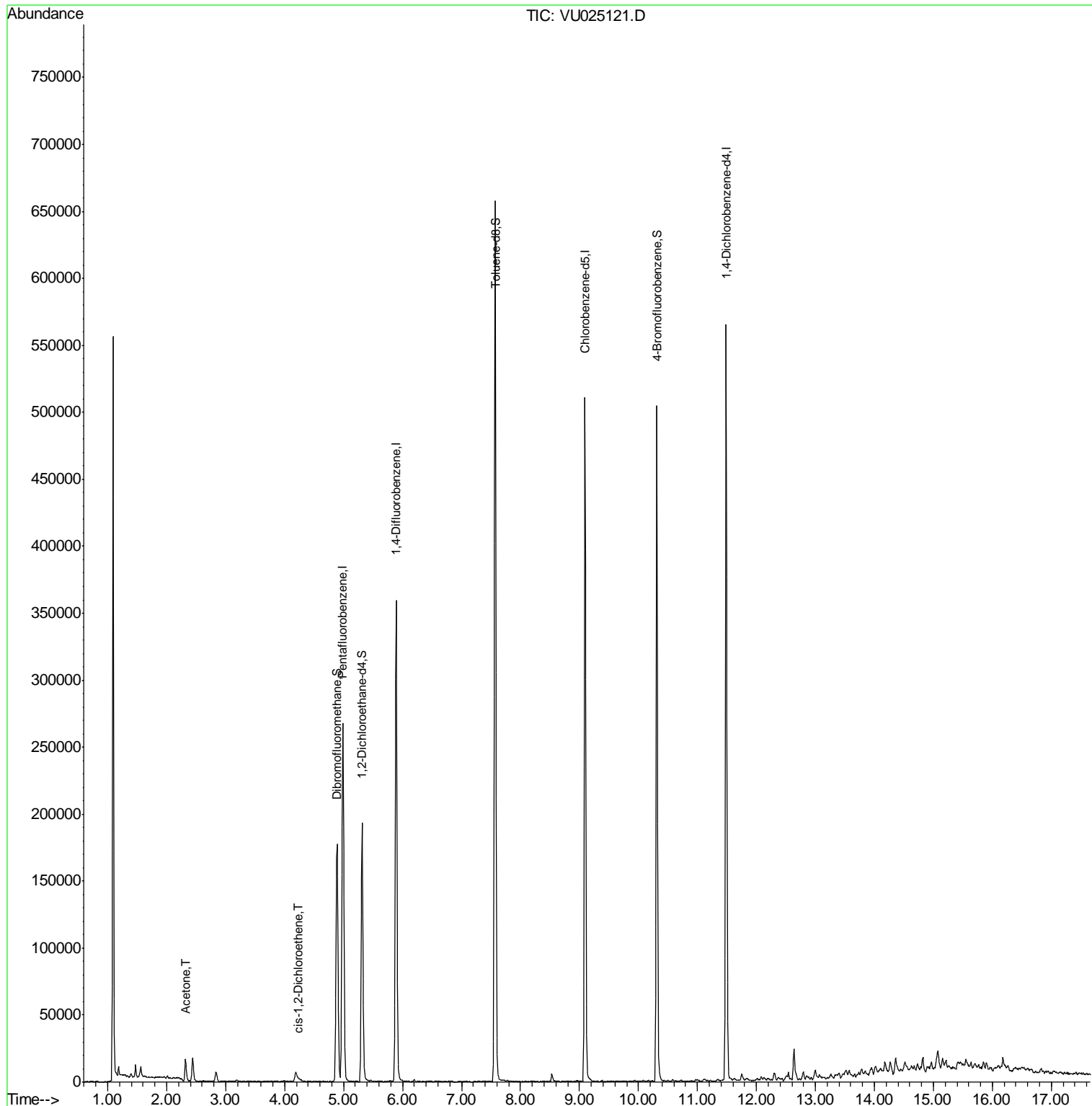
Internal Standards	R.T.	QIon	Response	Conc	Units	Dev(Min)
1) Pentafluorobenzene	4.99	168	205886	50.00	ug/l	0.00
34) 1,4-Difluorobenzene	5.89	114	305231	50.00	ug/l	0.00
63) Chlorobenzene-d5	9.09	117	280531	50.00	ug/l	0.00
72) 1,4-Dichlorobenzene-d4	11.49	152	148551	50.00	ug/l	0.00
System Monitoring Compounds						
33) 1,2-Dichloroethane-d4	5.31	65	157367	46.82	ug/l	0.00
Spiked Amount	50.000		Recovery	=	93.64%	
35) Dibromofluoromethane	4.89	113	120458	47.55	ug/l	0.00
Spiked Amount	50.000		Recovery	=	95.10%	
50) Toluene-d8	7.57	98	439603	47.58	ug/l	0.00
Spiked Amount	50.000		Recovery	=	95.16%	
62) 4-Bromofluorobenzene	10.31	95	161713	44.08	ug/l	0.00
Spiked Amount	50.000		Recovery	=	88.16%	
Target Compounds						
16) Acetone	2.32	43	18025	9.98	ug/l	97
27) cis-1,2-Dichloroethene	4.23	96	1352	0.46	ug/l	87

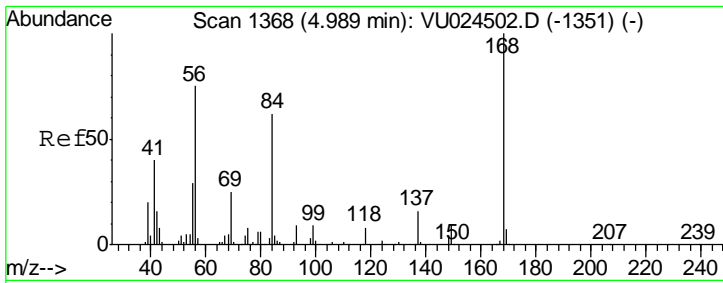
(#) = qualifier out of range (m) = manual integration (+) = signals summed

Data Path : Z:\VOASRV\HPCHEM1\MSVOA U\DATA\VU063018\  
 Data File : VU025121.D  
 Acq On : 01 Jul 2018 05:44  
 Operator : MD/SY  
 Sample : J3804-07  
 Misc : 5.0mL/MSVOA U/WATER  
 ALS Vial : 47 Sample Multiplier: 1

Instrument :  
 MSVOA\_U  
 ClientSampled :  
 GPW-01

Quant Time: Jul 02 08:18:39 2018  
 Quant Method : Z:\VOASRV\HPCHEM1\MSVOA\_U\METHOD\82U061318W.M  
 Quant Title : SW846 8260  
 QLast Update : Wed Jun 13 13:55:26 2018  
 Response via : Initial Calibration

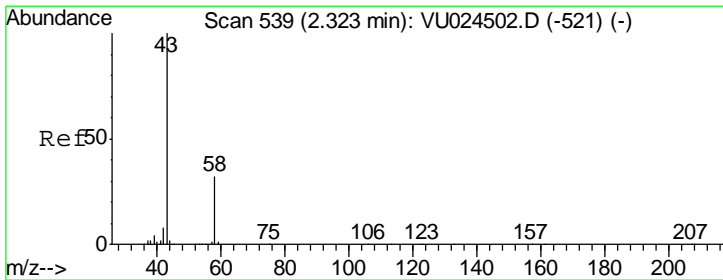
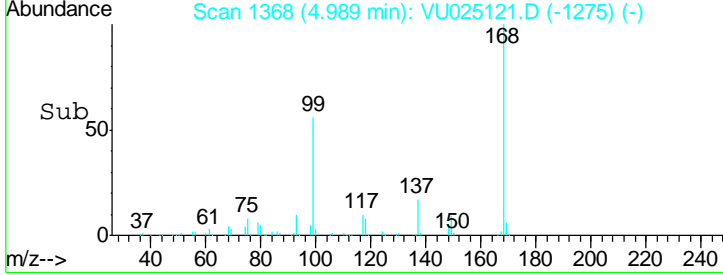
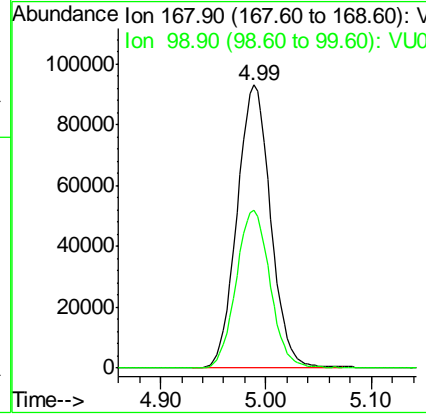
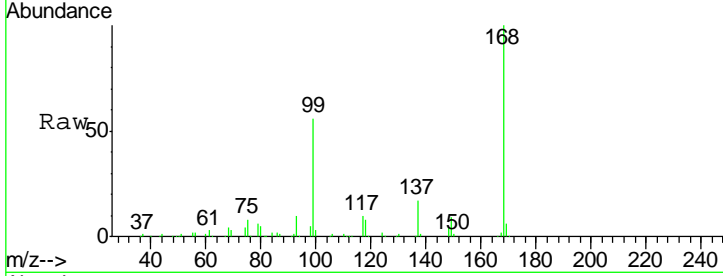




#1  
 Pentafluorobenzene  
 Concen: 50.00 ug/l  
 RT: 4.99 min Scan# 1368  
 Delta R.T. -0.00 min  
 Lab File: VU025121.D  
 Acq: 01 Jul 2018 05:44

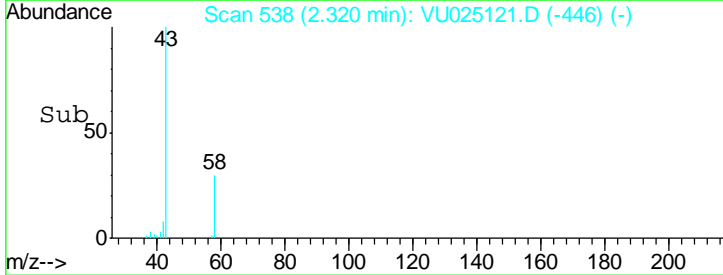
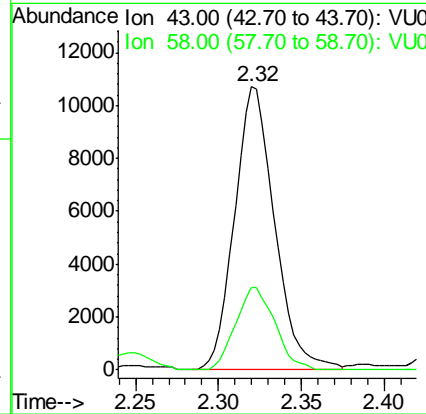
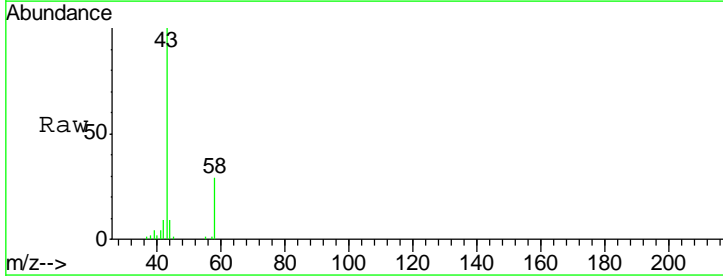
Instrument : MSVOA\_U  
 ClientSampled : GPW-01

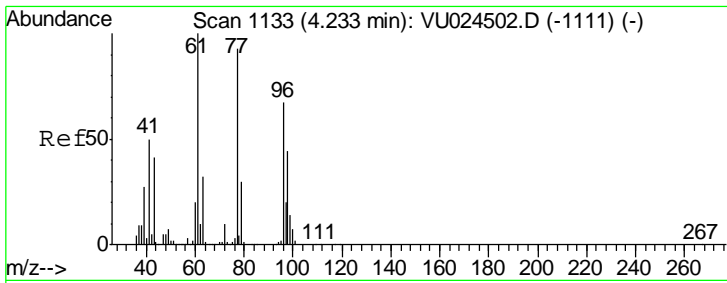
Tgt Ion	Resp	Lower	Upper
168	100		
99	55.6	43.2	64.8



#16  
 Acetone  
 Concen: 9.98 ug/l  
 RT: 2.32 min Scan# 538  
 Delta R.T. -0.00 min  
 Lab File: VU025121.D  
 Acq: 01 Jul 2018 05:44

Tgt Ion	Resp	Lower	Upper
43	100		
58	29.1	24.4	36.6

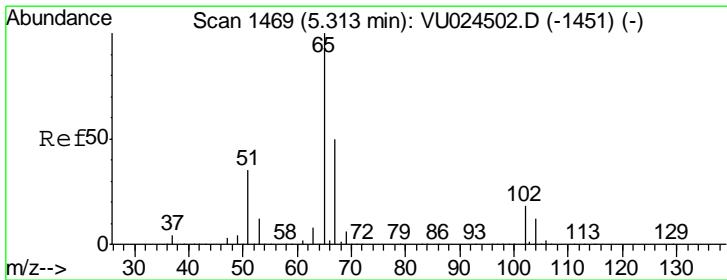
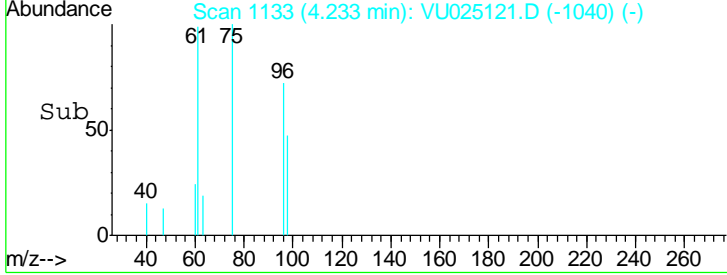
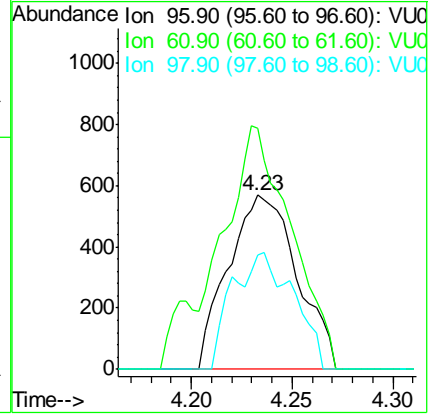
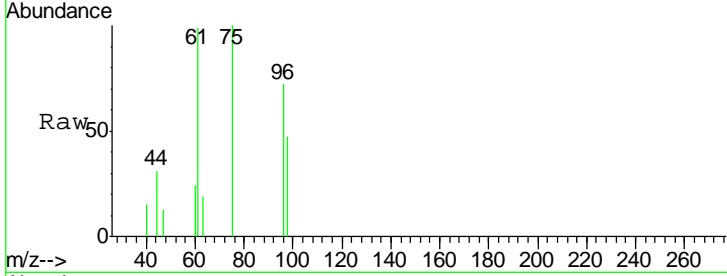




#27  
 cis-1,2-Dichloroethene  
 Concen: 0.46 ug/l  
 RT: 4.23 min Scan# 1133  
 Delta R.T. -0.00 min  
 Lab File: VU025121.D  
 Acq: 01 Jul 2018 05:44

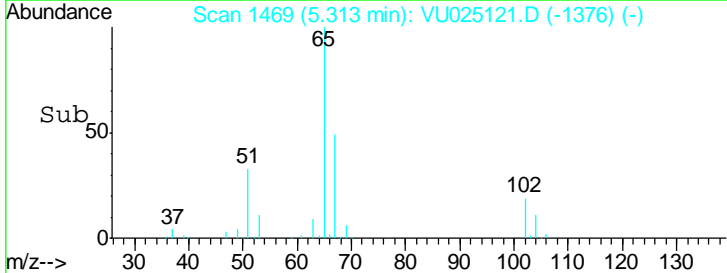
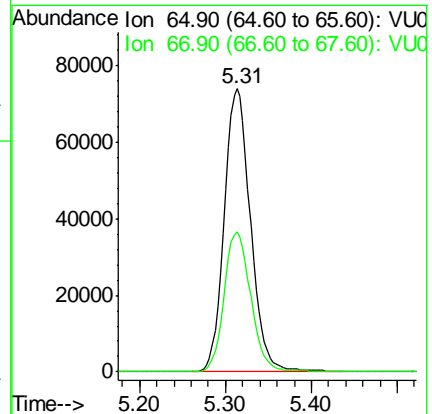
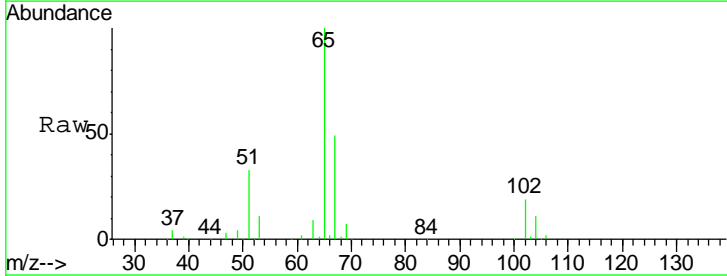
**Instrument :**  
 MSVOA\_U  
**ClientSampled :**  
 GPW-01

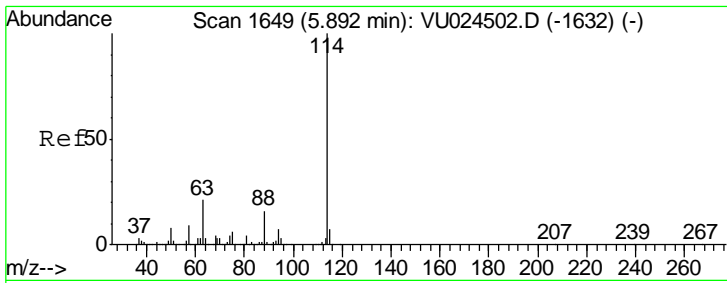
Tgt Ion	Resp	Lower	Upper
96	1352		
61	100	0.0	306.6
98	59.4	0.0	128.8



#33  
 1,2-Dichloroethane-d4  
 Concen: 46.82 ug/l  
 RT: 5.31 min Scan# 1469  
 Delta R.T. -0.00 min  
 Lab File: VU025121.D  
 Acq: 01 Jul 2018 05:44

Tgt Ion	Resp	Lower	Upper
65	157367		
67	100	0.0	107.0
67	50.3	0.0	107.0

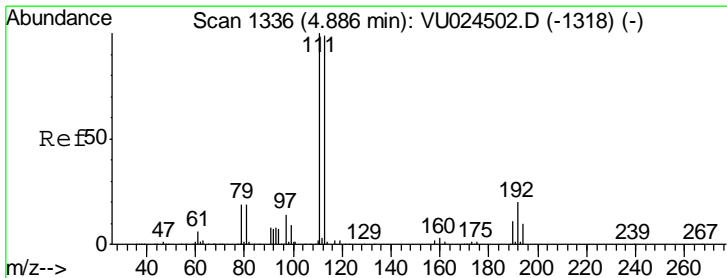
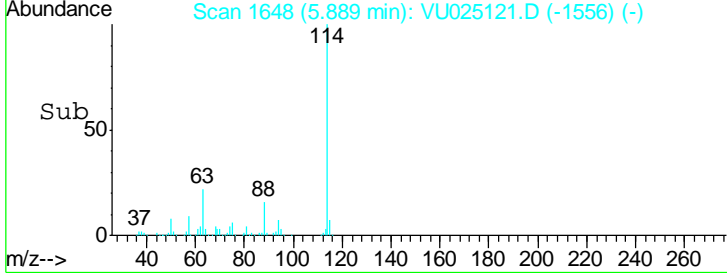
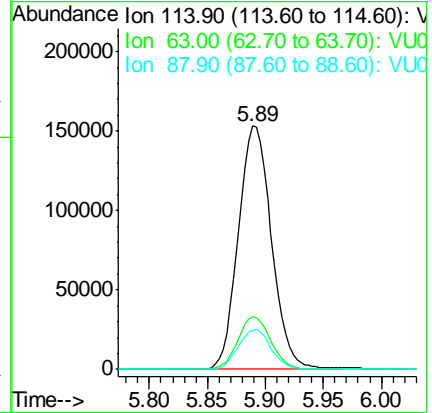
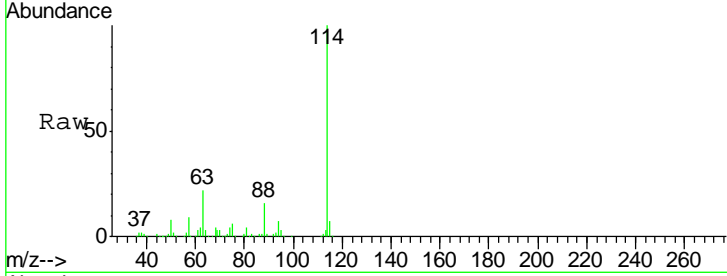




#34  
 1,4-Difluorobenzene  
 Concen: 50.00 ug/l  
 RT: 5.89 min Scan# 1648  
 Delta R.T. -0.00 min  
 Lab File: VU025121.D  
 Acq: 01 Jul 2018 05:44

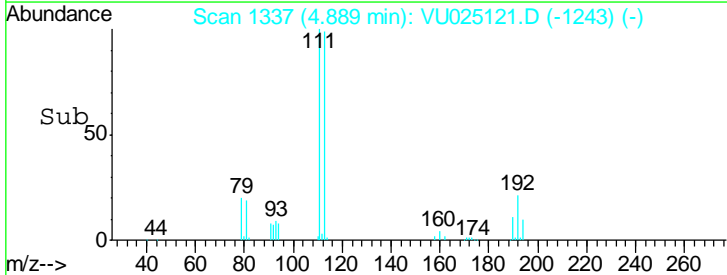
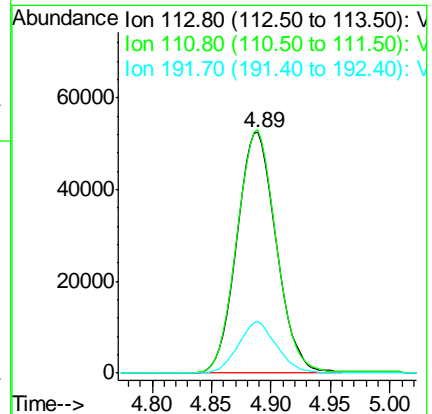
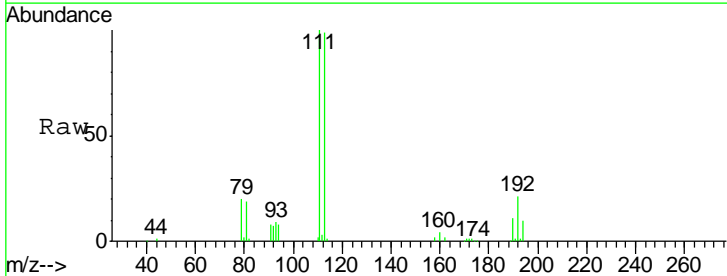
Instrument :  
 MSVOA\_U  
 ClientSampled :  
 GPW-01

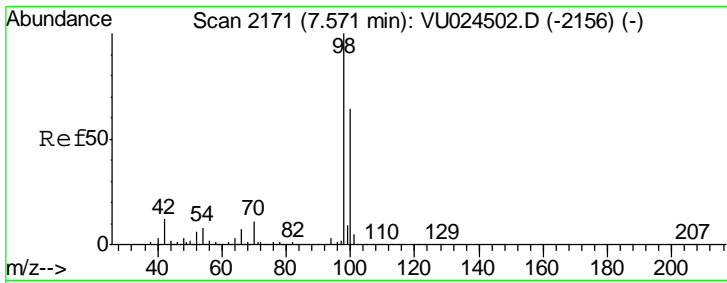
Tgt Ion	Resp	Lower	Upper
114	100		
63	21.5	0.0	45.4
88	16.1	0.0	31.0



#35  
 Dibromofluoromethane  
 Concen: 47.55 ug/l  
 RT: 4.89 min Scan# 1337  
 Delta R.T. 0.00 min  
 Lab File: VU025121.D  
 Acq: 01 Jul 2018 05:44

Tgt Ion	Resp	Lower	Upper
113	100		
111	100.7	82.2	123.4
192	20.7	16.2	24.4

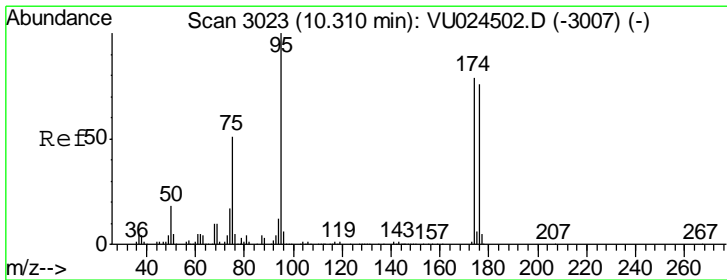
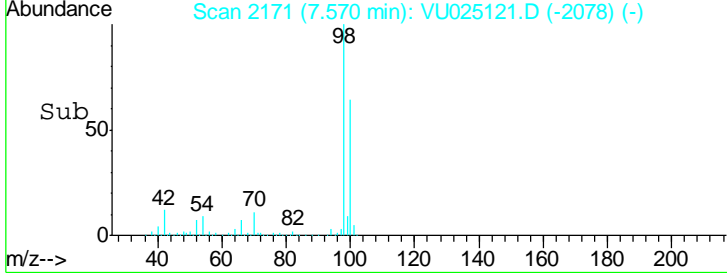
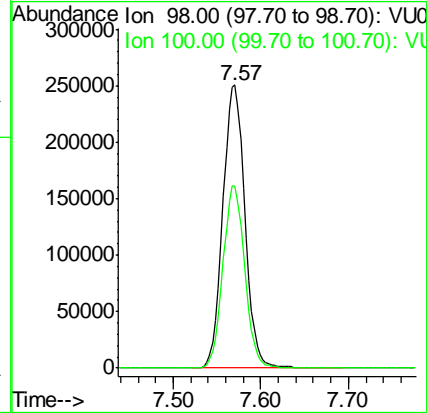
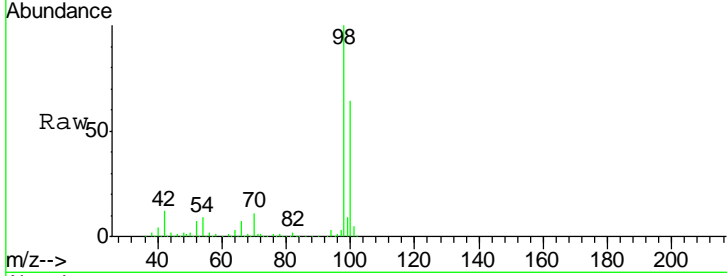




#50  
 Toluene-d8  
 Concen: 47.58 ug/l  
 RT: 7.57 min Scan# 2171  
 Delta R.T. -0.00 min  
 Lab File: VU025121.D  
 Acq: 01 Jul 2018 05:44

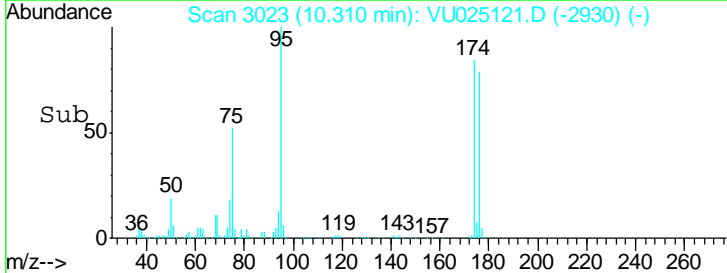
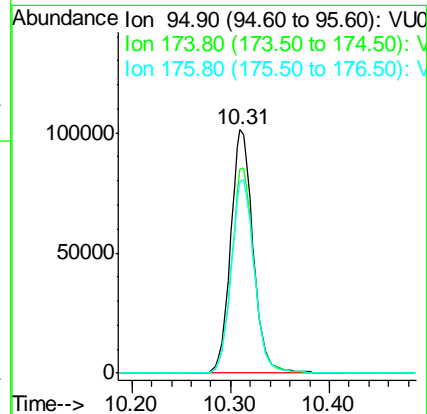
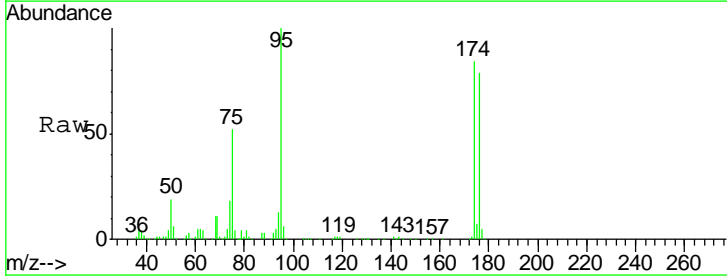
Instrument :  
 MSVOA\_U  
 ClientSampled :  
 GPW-01

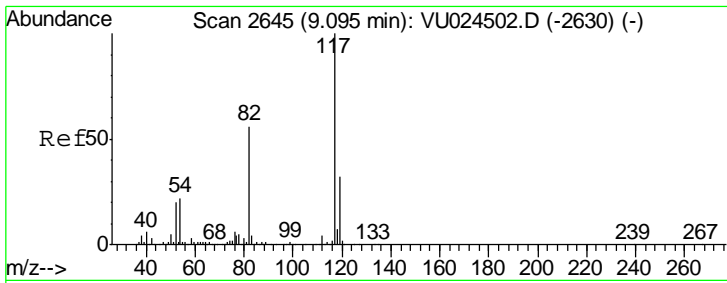
Tgt Ion	Resp	Lower	Upper
98	100		
100	63.8	51.1	76.7



#62  
 4-Bromofluorobenzene  
 Concen: 44.08 ug/l  
 RT: 10.31 min Scan# 3023  
 Delta R.T. -0.00 min  
 Lab File: VU025121.D  
 Acq: 01 Jul 2018 05:44

Tgt Ion	Resp	Lower	Upper
95	100		
174	84.6	0.0	165.8
176	81.7	0.0	159.4

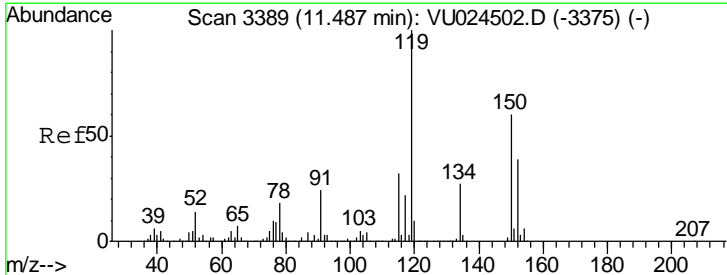
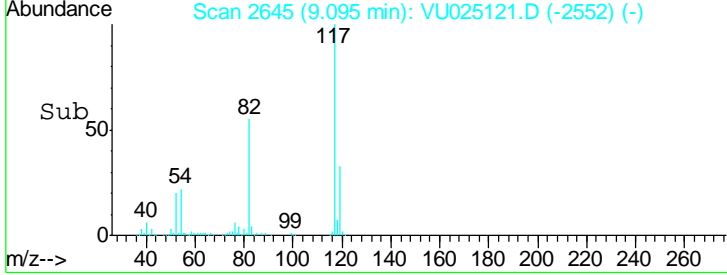
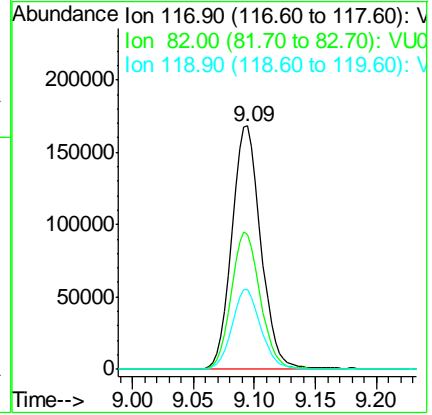
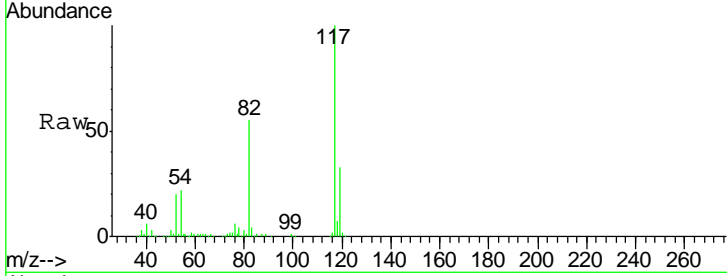




#63  
 Chlorobenzene-d5  
 Concen: 50.00 ug/l  
 RT: 9.09 min Scan# 2645  
 Delta R.T. -0.00 min  
 Lab File: VU025121.D  
 Acq: 01 Jul 2018 05:44

Instrument : MSVOA\_U  
 ClientSampled : GPW-01

Tgt Ion	Resp	Lower	Upper
117	280531		
82	55.2	44.3	66.5
119	32.5	25.4	38.2



#72  
 1,4-Dichlorobenzene-d4  
 Concen: 50.00 ug/l  
 RT: 11.49 min Scan# 3389  
 Delta R.T. -0.00 min  
 Lab File: VU025121.D  
 Acq: 01 Jul 2018 05:44

Tgt Ion	Resp	Lower	Upper
152	148551		
115	58.8	43.0	129.0
150	155.3	0.0	354.0

