

Data Path : Z:\VOASRV\HPCHEM1\MSVOA U\DATA\VU063018\
 Data File : VU025122.D
 Acq On : 01 Jul 2018 06:08
 Operator : MD/SY
 Sample : J3789-01
 Misc : 5.0mL/MSVOA U/WATER
 ALS Vial : 48 Sample Multiplier: 1

Instrument :
 MSVOA_U
 ClientSampleID :
 MW-1R

Quant Time: Jul 02 08:20:49 2018
 Quant Method : Z:\VOASRV\HPCHEM1\MSVOA_U\METHOD\82U061318W.M
 Quant Title : SW846 8260
 QLast Update : Wed Jun 13 13:55:26 2018
 Response via : Initial Calibration

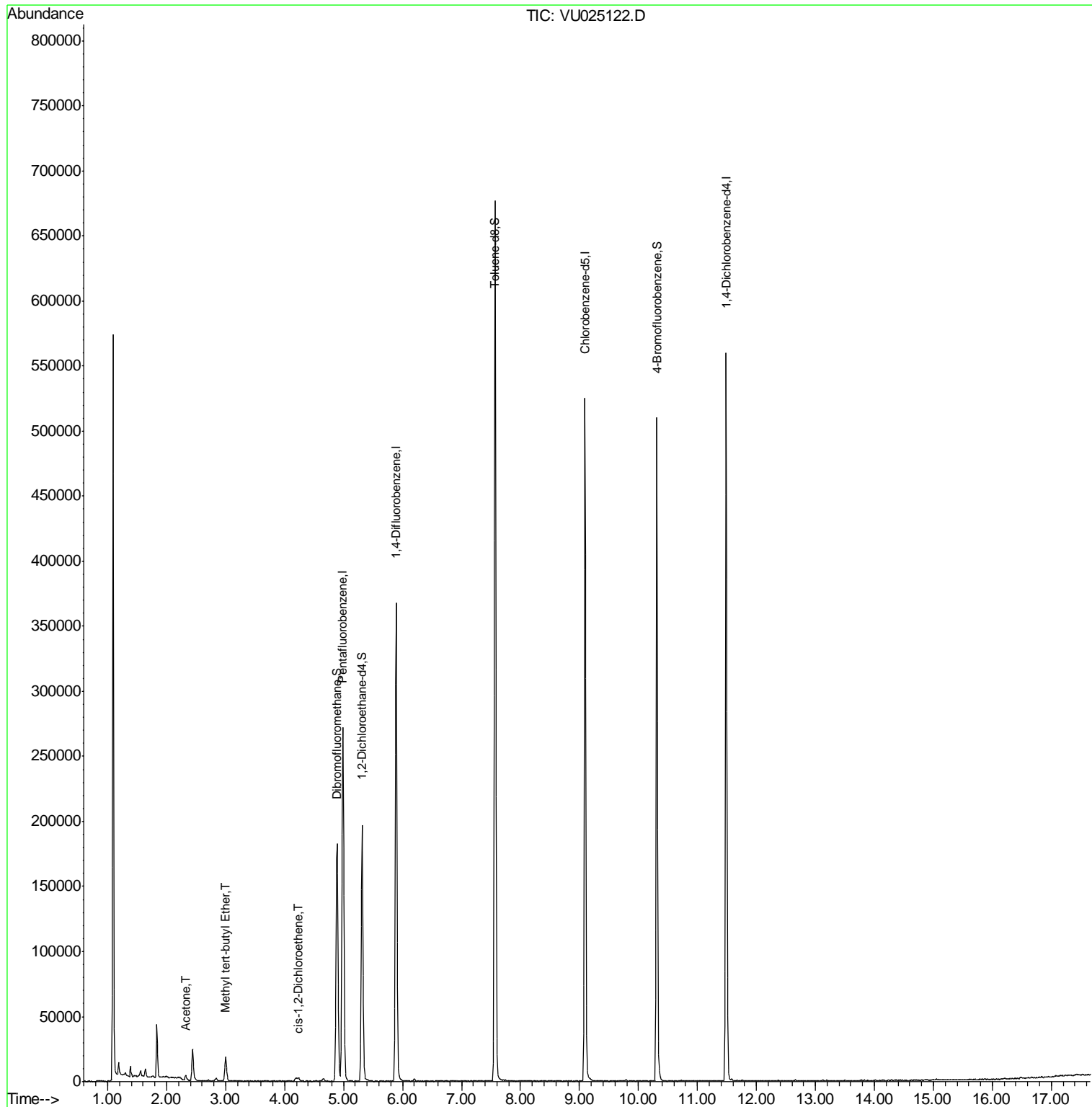
Internal Standards	R.T.	QIon	Response	Conc	Units	Dev(Min)
1) Pentafluorobenzene	4.99	168	207470	50.00	ug/l	0.00
34) 1,4-Difluorobenzene	5.89	114	311652	50.00	ug/l	0.00
63) Chlorobenzene-d5	9.09	117	286355	50.00	ug/l	0.00
72) 1,4-Dichlorobenzene-d4	11.49	152	148526	50.00	ug/l	0.00
System Monitoring Compounds						
33) 1,2-Dichloroethane-d4	5.31	65	159559	47.11	ug/l	0.00
Spiked Amount	50.000		Recovery	=	94.22%	
35) Dibromofluoromethane	4.89	113	123384	47.70	ug/l	0.00
Spiked Amount	50.000		Recovery	=	95.40%	
50) Toluene-d8	7.57	98	453789	48.10	ug/l	0.00
Spiked Amount	50.000		Recovery	=	96.20%	
62) 4-Bromofluorobenzene	10.31	95	163637	43.69	ug/l	0.00
Spiked Amount	50.000		Recovery	=	87.38%	
Target Compounds						
16) Acetone	2.32	43	4124	2.27	ug/l	90
19) Methyl tert-butyl Ether	3.00	73	19367	2.18	ug/l	95
27) cis-1,2-Dichloroethene	4.24	96	1245	0.42	ug/l	91

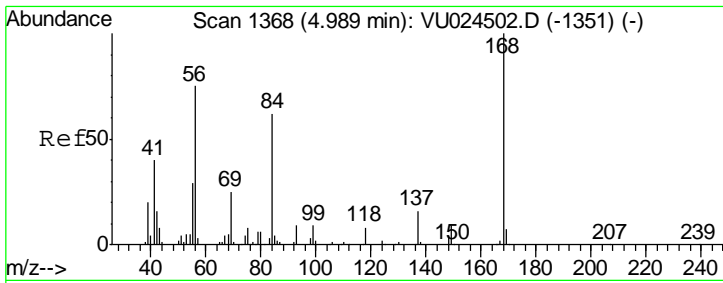
(#) = qualifier out of range (m) = manual integration (+) = signals summed

Data Path : Z:\VOASRV\HPCHEM1\MSVOA U\DATA\VU063018\
 Data File : VU025122.D
 Acq On : 01 Jul 2018 06:08
 Operator : MD/SY
 Sample : J3789-01
 Misc : 5.0mL/MSVOA U/WATER
 ALS Vial : 48 Sample Multiplier: 1

Instrument :
 MSVOA_U
 ClientSampled :
 MW-1R

Quant Time: Jul 02 08:20:49 2018
 Quant Method : Z:\VOASRV\HPCHEM1\MSVOA_U\METHOD\82U061318W.M
 Quant Title : SW846 8260
 QLast Update : Wed Jun 13 13:55:26 2018
 Response via : Initial Calibration

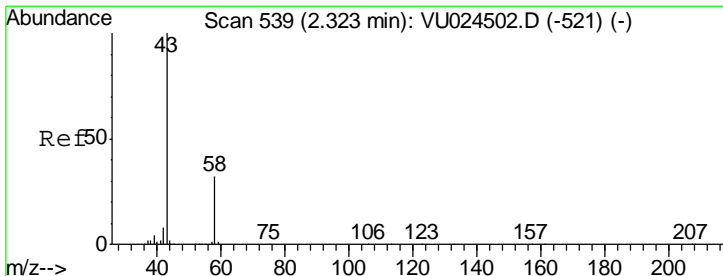
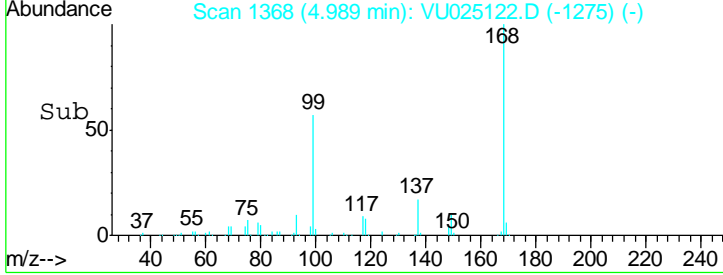
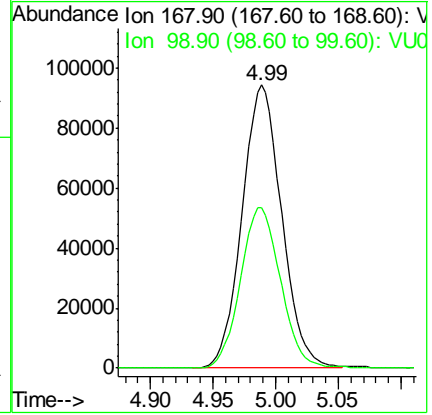
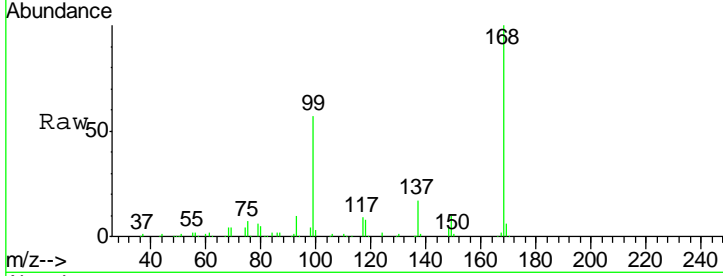




#1
 Pentafluorobenzene
 Concen: 50.00 ug/l
 RT: 4.99 min Scan# 1368
 Delta R.T. -0.00 min
 Lab File: VU025122.D
 Acq: 01 Jul 2018 06:08

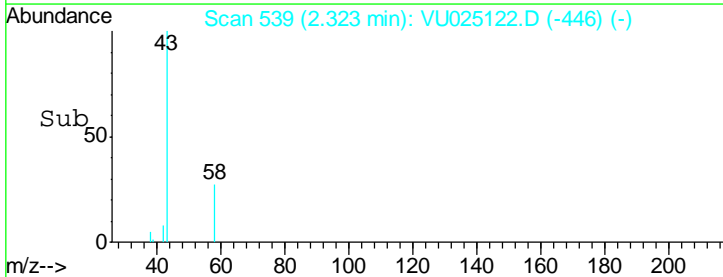
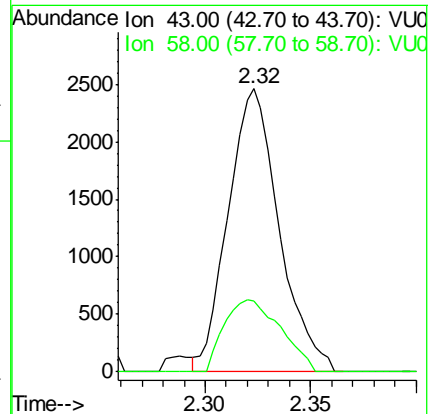
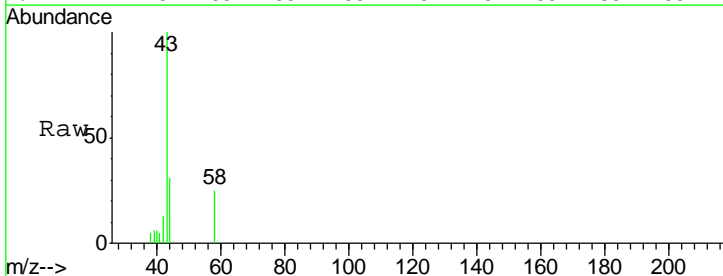
Instrument : MSVOA_U
 ClientSampled : MW-1R

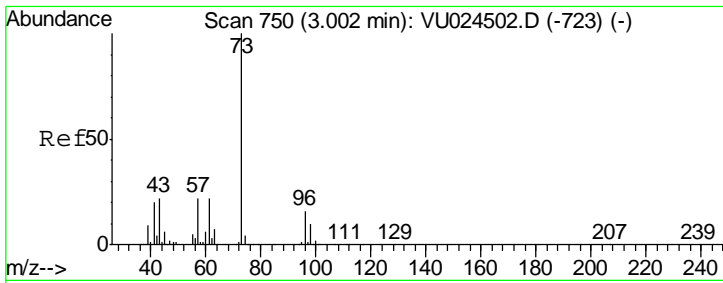
Tgt Ion	Resp	Lower	Upper
168	100		
99	56.5	43.2	64.8



#16
 Acetone
 Concen: 2.27 ug/l
 RT: 2.32 min Scan# 539
 Delta R.T. -0.00 min
 Lab File: VU025122.D
 Acq: 01 Jul 2018 06:08

Tgt Ion	Resp	Lower	Upper
43	100		
58	25.1	24.4	36.6

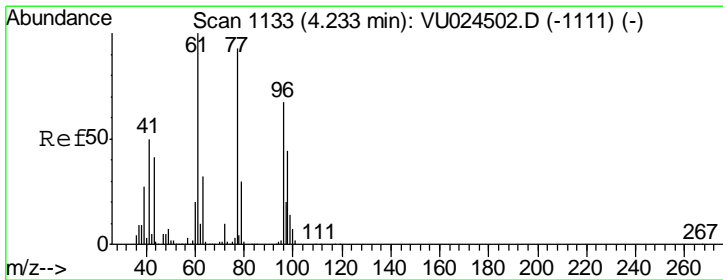
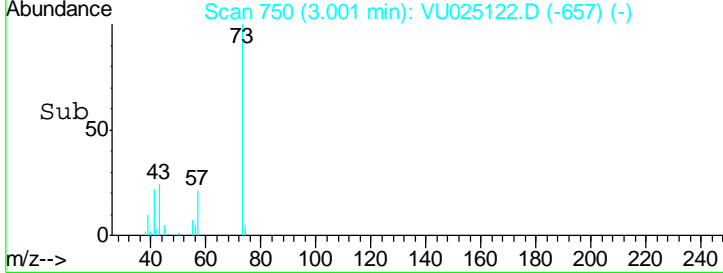
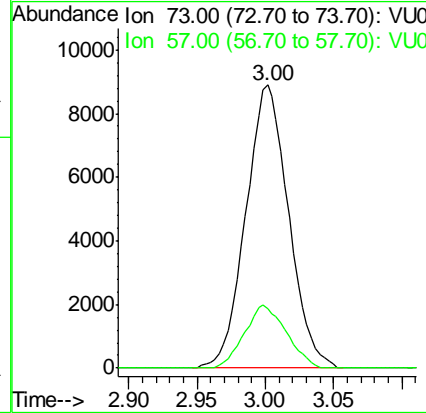
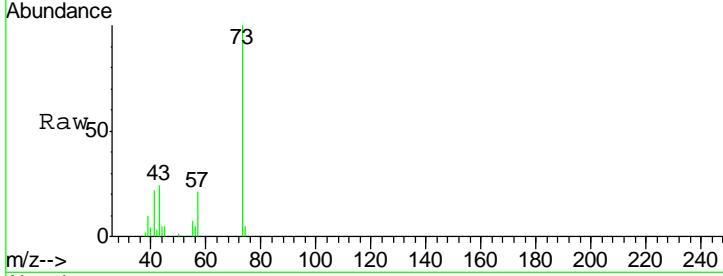




#19
 Methyl tert-butyl Ether
 Concen: 2.18 ug/l
 RT: 3.00 min Scan# 750
 Delta R.T. -0.00 min
 Lab File: VU025122.D
 Acq: 01 Jul 2018 06:08

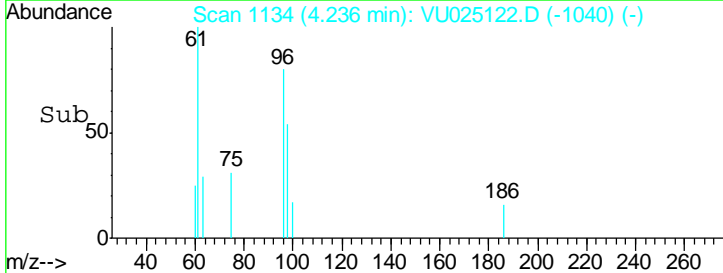
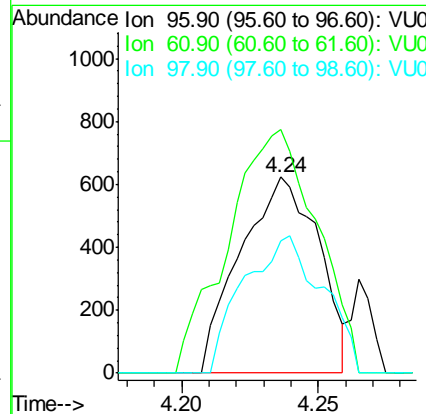
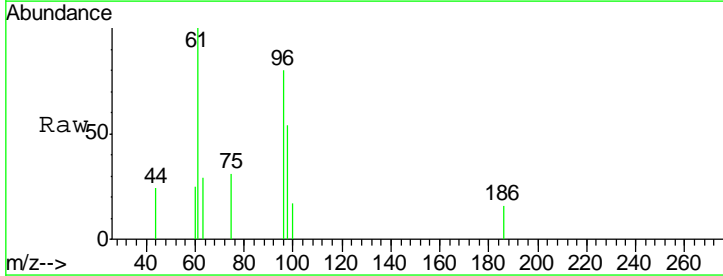
Instrument :
 MSVOA_U
ClientSampled :
 MW-1R

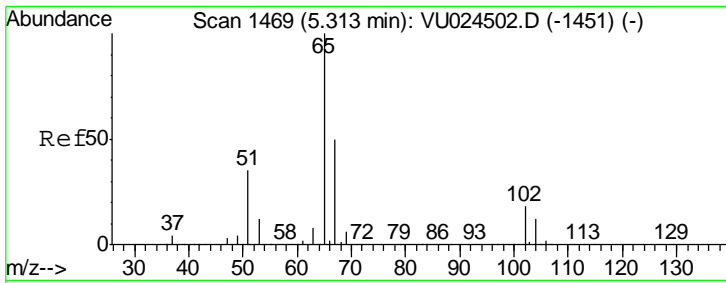
Tgt Ion	Resp	Lower	Upper
73	19367		
57	21.0	18.8	28.2



#27
 cis-1,2-Dichloroethene
 Concen: 0.42 ug/l
 RT: 4.24 min Scan# 1134
 Delta R.T. 0.00 min
 Lab File: VU025122.D
 Acq: 01 Jul 2018 06:08

Tgt Ion	Resp	Lower	Upper
96	1245		
61	140.4	0.0	306.6
98	70.2	0.0	128.8

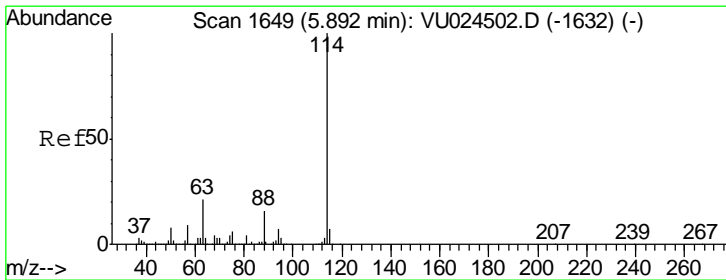
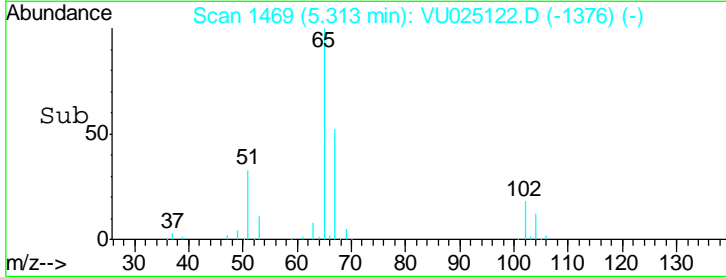
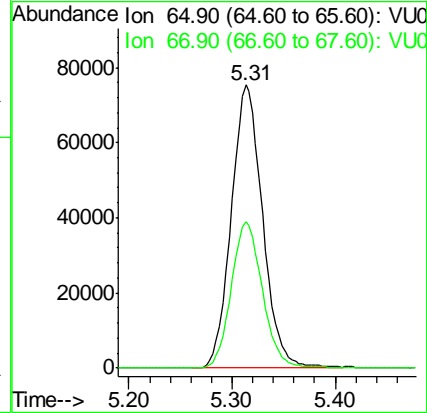
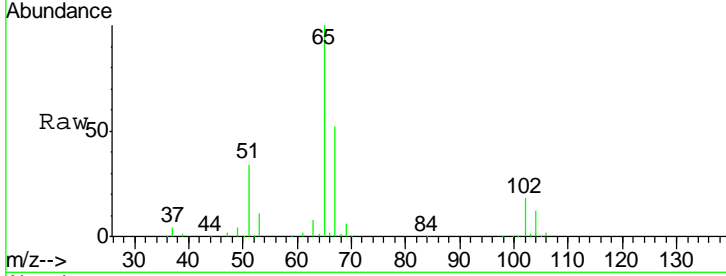




#33
 1,2-Dichloroethane-d4
 Concen: 47.11 ug/l
 RT: 5.31 min Scan# 1469
 Delta R.T. -0.00 min
 Lab File: VU025122.D
 Acq: 01 Jul 2018 06:08

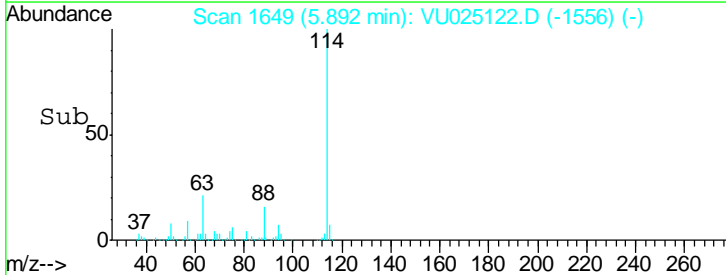
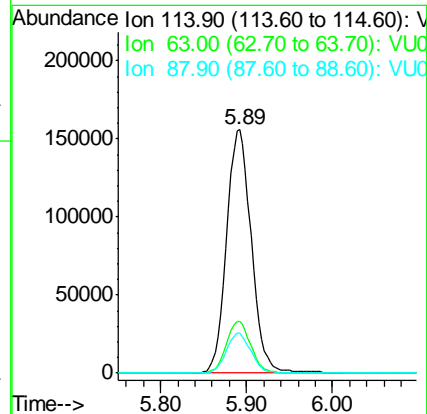
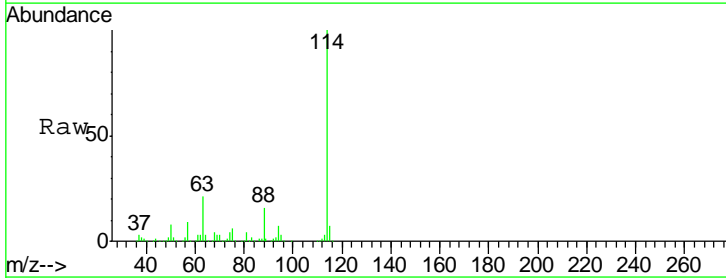
Instrument :
 MSVOA_U
 ClientSampled :
 MW-1R

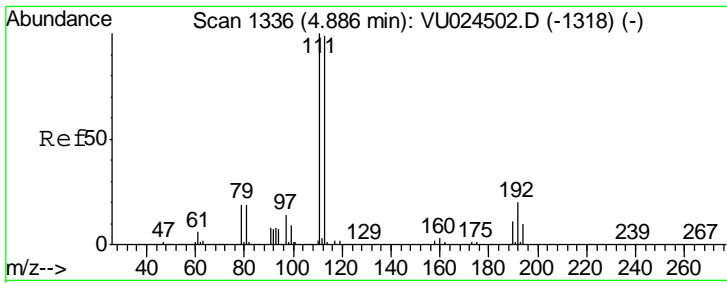
Tgt Ion	Resp	Lower	Upper
65	159559		
67	51.1	0.0	107.0



#34
 1,4-Difluorobenzene
 Concen: 50.00 ug/l
 RT: 5.89 min Scan# 1649
 Delta R.T. -0.00 min
 Lab File: VU025122.D
 Acq: 01 Jul 2018 06:08

Tgt Ion	Resp	Lower	Upper
114	311652		
63	21.2	0.0	45.4
88	16.3	0.0	31.0

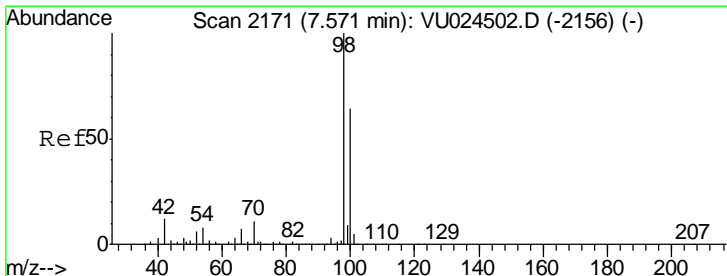
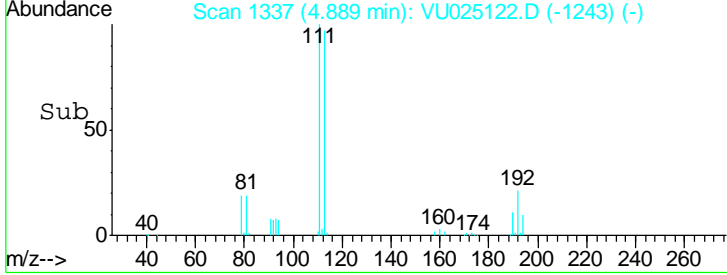
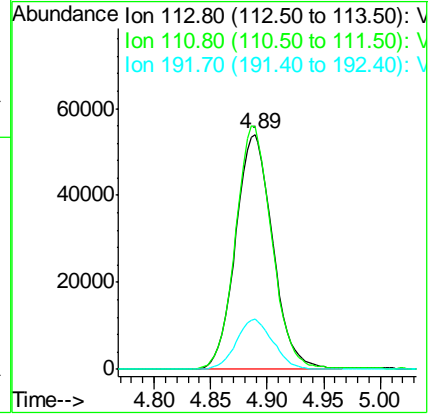
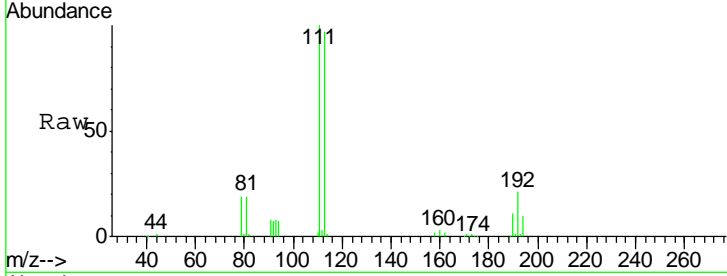




#35
 Dibromofluoromethane
 Concen: 47.70 ug/l
 RT: 4.89 min Scan# 1337
 Delta R.T. 0.00 min
 Lab File: VU025122.D
 Acq: 01 Jul 2018 06:08

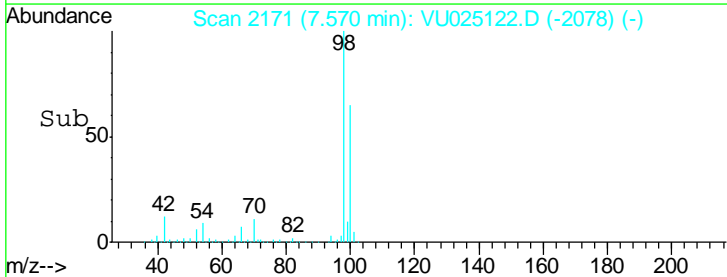
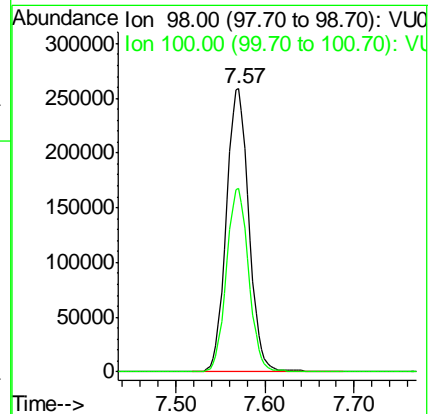
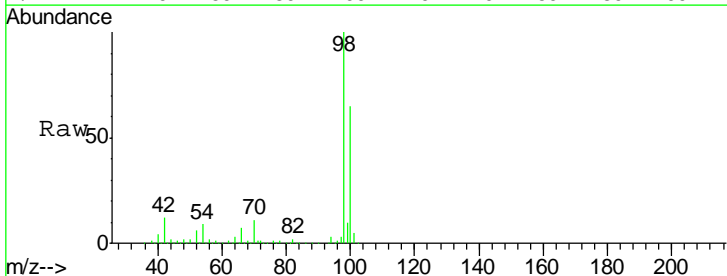
Instrument :
 MSVOA_U
 ClientSampled :
 MW-1R

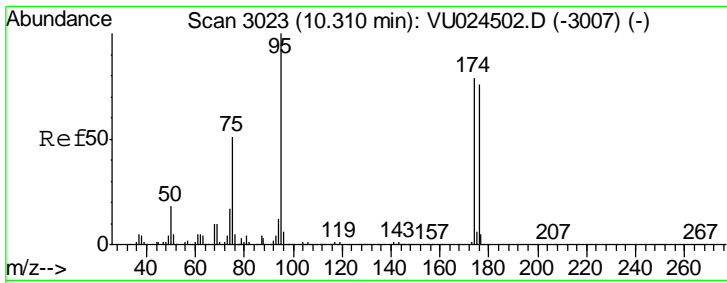
Tgt Ion	Resp	Lower	Upper
113	123384		
111	101.1	82.2	123.4
192	21.0	16.2	24.4



#50
 Toluene-d8
 Concen: 48.10 ug/l
 RT: 7.57 min Scan# 2171
 Delta R.T. -0.00 min
 Lab File: VU025122.D
 Acq: 01 Jul 2018 06:08

Tgt Ion	Resp	Lower	Upper
98	453789		
100	64.1	51.1	76.7

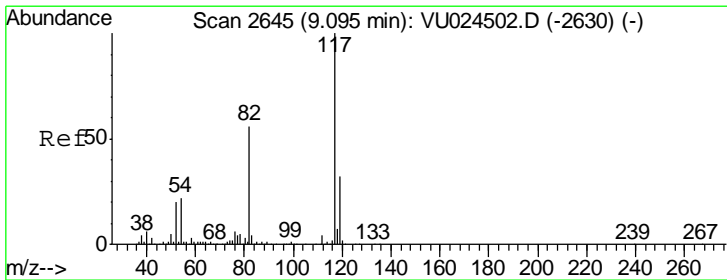
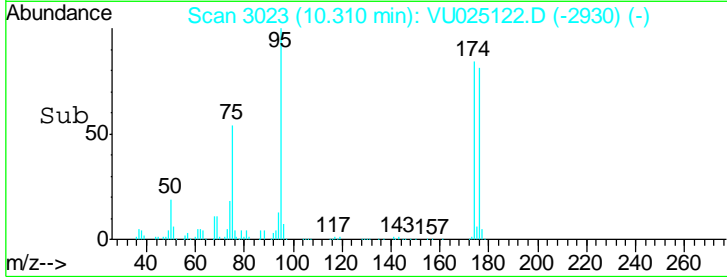
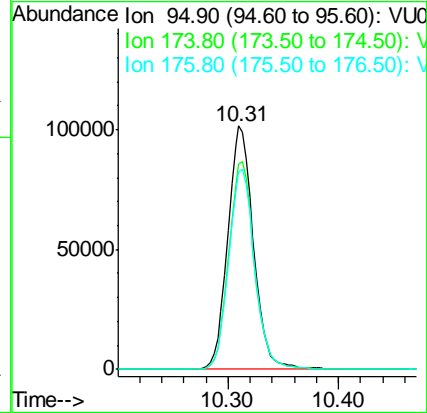
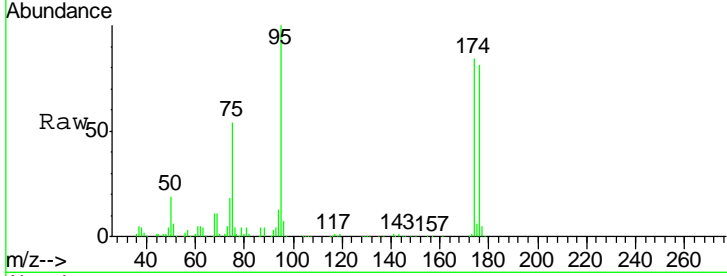




#62
 4-Bromofluorobenzene
 Concen: 43.69 ug/l
 RT: 10.31 min Scan# 3023
 Delta R.T. -0.00 min
 Lab File: VU025122.D
 Acq: 01 Jul 2018 06:08

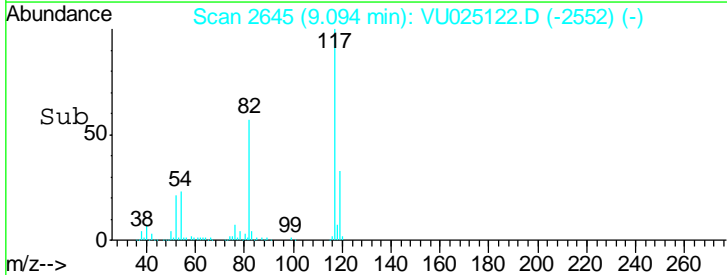
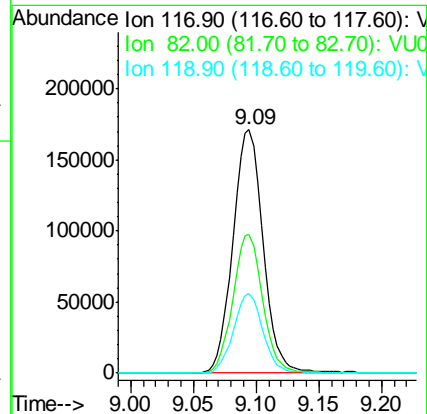
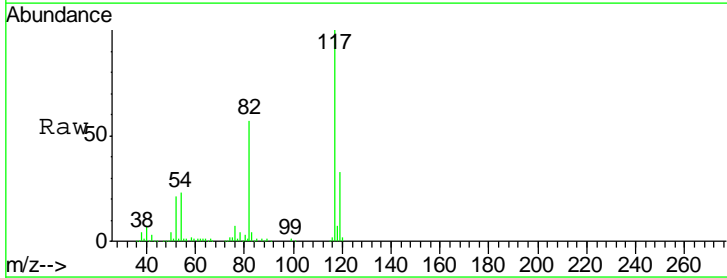
Instrument :
 MSVOA_U
 ClientSampled :
 MW-1R

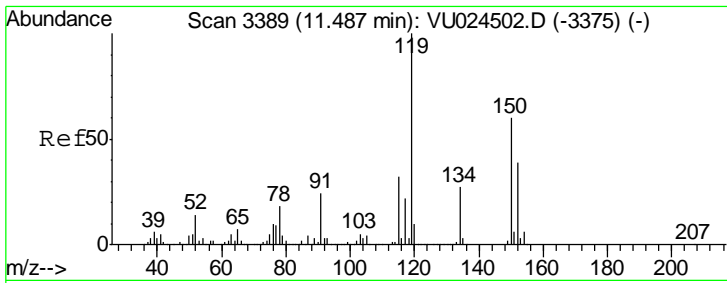
Tgt Ion	Resp	Lower	Upper
95	163637		
174	85.4	0.0	165.8
176	83.3	0.0	159.4



#63
 Chlorobenzene-d5
 Concen: 50.00 ug/l
 RT: 9.09 min Scan# 2645
 Delta R.T. -0.00 min
 Lab File: VU025122.D
 Acq: 01 Jul 2018 06:08

Tgt Ion	Resp	Lower	Upper
117	286355		
82	56.8	44.3	66.5
119	32.6	25.4	38.2





#72
 1,4-Dichlorobenzene-d4
 Concen: 50.00 ug/l
 RT: 11.49 min Scan# 3389
 Delta R.T. -0.00 min
 Lab File: VU025122.D
 Acq: 01 Jul 2018 06:08

Instrument :
 MSVOA_U
 ClientSampled :
 MW-1R

Tot Ion	Resp	Lower	Upper
152	148526		
152	100		
115	57.8	43.0	129.0
150	156.2	0.0	354.0

