

Data Path : Z:\voasrv\HPCHEM1\MSVOA_U\Data\VU070121\
 Data File : VU044286.D
 Acq On : 01 Jul 2021 15:13
 Operator : SY/MD
 Sample : M2905-19
 Misc : 25.0mL/MSVOA_U/WATER
 ALS Vial : 14 Sample Multiplier: 1

Instrument :
 MSVOA_U
 ClientSampleId :
 DBK28

Integration Parameters: rteint.p
 Integrator: RTE
 Smoothing : ON Filtering: 5
 Sampling : 1 Min Area: 3 % of largest Peak
 Start Thrs: 0.1 Max Peaks: 100
 Stop Thrs : 0 Peak Location: TOP

If leading or trailing edge < 100 prefer < Baseline drop else tangent >
 Peak separation: 5

Method : Z:\voasrv\HPCHEM1\MSVOA_U\Method\SFAMUTR062121WMA.M
 Title : TRACE VOA SFAM1.0

Signal : TIC: VU044286.D\data.ms

peak #	R.T. min	first scan	max scan	last scan	PK TY	peak height	corr. area	corr. % max.	% of total
1	7.999	2060	2071	2085	rVB	715774	1181164	1.01%	0.519%
2	8.661	2262	2277	2301	rBV2	1765221	3094299	2.66%	1.360%
3	9.706	2582	2602	2614	rBV	1512140	2895463	2.49%	1.273%
4	10.115	2714	2729	2750	rVB2	1156230	2271661	1.95%	0.999%
5	11.015	2988	3009	3025	rVV2	2831331	7082314	6.08%	3.113%
6	11.099	3025	3035	3048	rVB2	2823606	4498629	3.86%	1.977%
7	11.240	3068	3079	3089	rBV	2621999	4005084	3.44%	1.760%
8	11.301	3089	3098	3117	rVB	1914449	3028911	2.60%	1.331%
9	11.478	3142	3153	3168	rVB	4107844	6265500	5.38%	2.754%
10	11.571	3168	3182	3192	rBV	3367460	5339553	4.58%	2.347%
11	11.648	3192	3206	3223	rVB3	1056555	1907840	1.64%	0.839%
12	11.754	3224	3239	3244	rBV5	766747	1383292	1.19%	0.608%
13	11.822	3244	3260	3279	rVB3	56538754	116488254	100.00%	51.203%
14	11.912	3279	3288	3297	rBV	1620612	2345298	2.01%	1.031%
15	12.108	3340	3349	3354	rBV2	1092423	1738467	1.49%	0.764%
16	12.198	3366	3377	3394	rBV3	1661783	2982055	2.56%	1.311%
17	12.381	3423	3434	3449	rVB2	1360198	2364630	2.03%	1.039%
18	12.488	3450	3467	3486	rBV3	2776917	7015180	6.02%	3.084%
19	12.581	3486	3496	3505	rBV2	1296223	1915102	1.64%	0.842%
20	12.819	3560	3570	3582	rBV5	550038	1291845	1.11%	0.568%
21	13.021	3625	3633	3647	rVB2	2347390	4572697	3.93%	2.010%
22	13.111	3647	3661	3676	rBV	1969822	3330072	2.86%	1.464%
23	13.414	3744	3755	3763	rBV	5907804	8791331	7.55%	3.864%
24	13.494	3774	3780	3800	rVB3	1137442	2296545	1.97%	1.009%
25	13.738	3847	3856	3874	rVB2	939719	1601421	1.37%	0.704%
26	13.828	3875	3884	3895	rBV4	811990	1402386	1.20%	0.616%
27	13.938	3908	3918	3922	rBV	1305777	1909538	1.64%	0.839%
28	13.976	3922	3930	3953	rVB3	5799839	10474478	8.99%	4.604%
29	14.095	3959	3967	3983	rVB2	598802	1166306	1.00%	0.513%
30	14.201	3983	4000	4009	rBV6	555152	1622911	1.39%	0.713%
31	14.375	4045	4054	4069	rBV4	919409	1688885	1.45%	0.742%
32	14.587	4111	4120	4129	rVB	1860322	2696043	2.31%	1.185%
33	14.761	4165	4174	4194	rBV	2562525	3935447	3.38%	1.730%
34	15.188	4298	4307	4313	rBV	812365	1246696	1.07%	0.548%
35	15.414	4368	4377	4406	rVB2	813360	1673900	1.44%	0.736%

Data Path : Z:\voasrv\HPCHEM1\MSVOA_U\Data\VU070121\
Data File : VU044286.D
Acq On : 01 Jul 2021 15:13
Operator : SY/MD
Sample : M2905-19
Misc : 25.0mL/MSVOA_U/WATER
ALS Vial : 14 Sample Multiplier: 1

Instrument :
MSVOA_U
ClientSampled :
DBK28

Integration Parameters: rteint.p
Integrator: RTE
Smoothing : ON Filtering: 5
Sampling : 1 Min Area: 3 % of largest Peak
Start Thrs: 0.1 Max Peaks: 100
Stop Thrs : 0 Peak Location: TOP

If leading or trailing edge < 100 prefer < Baseline drop else tangent >
Peak separation: 5

Method : Z:\voasrv\HPCHEM1\MSVOA_U\Method\SFAMUTR062121WMA.M
Title : TRACE VOA SFAM1.0

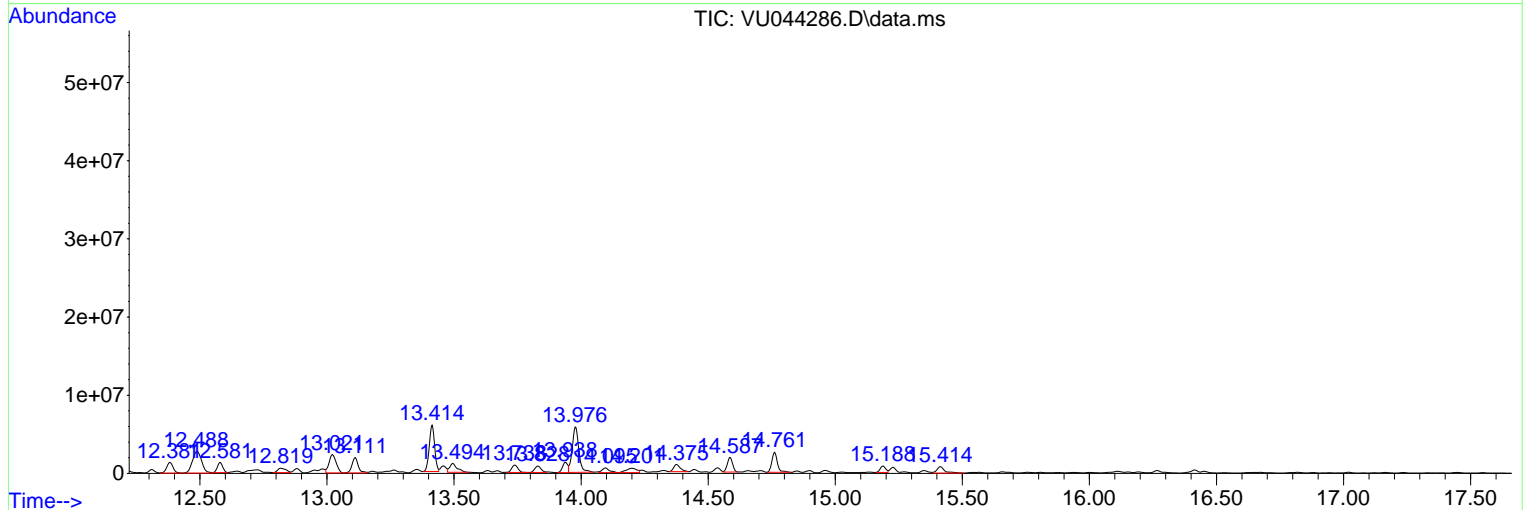
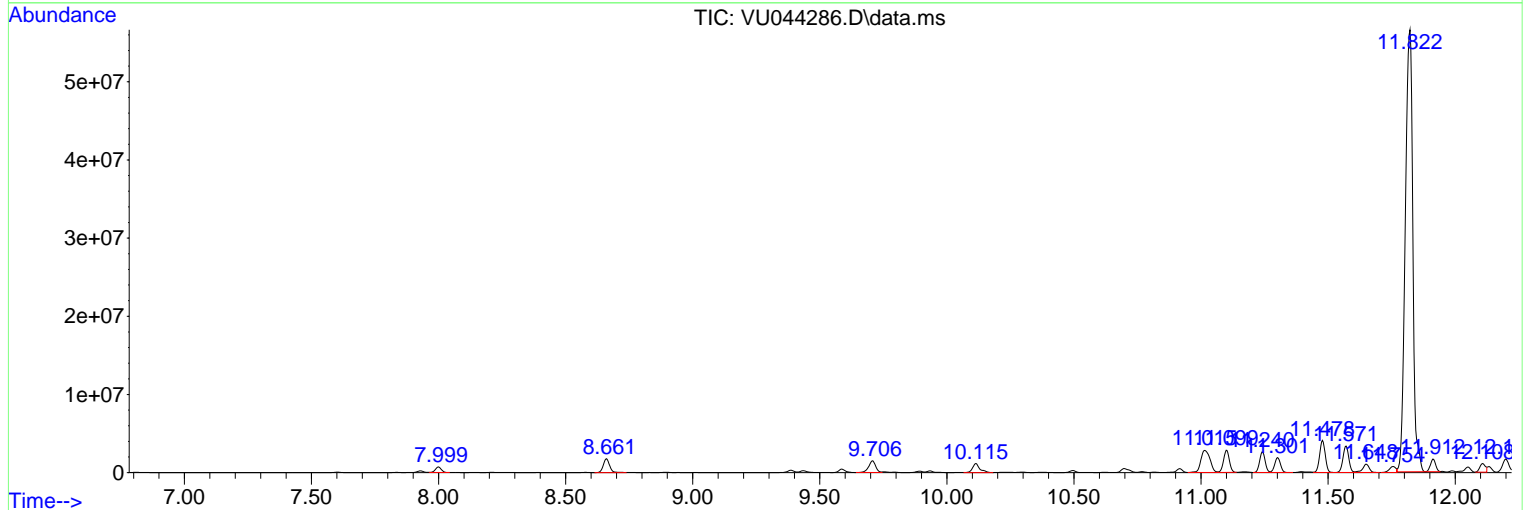
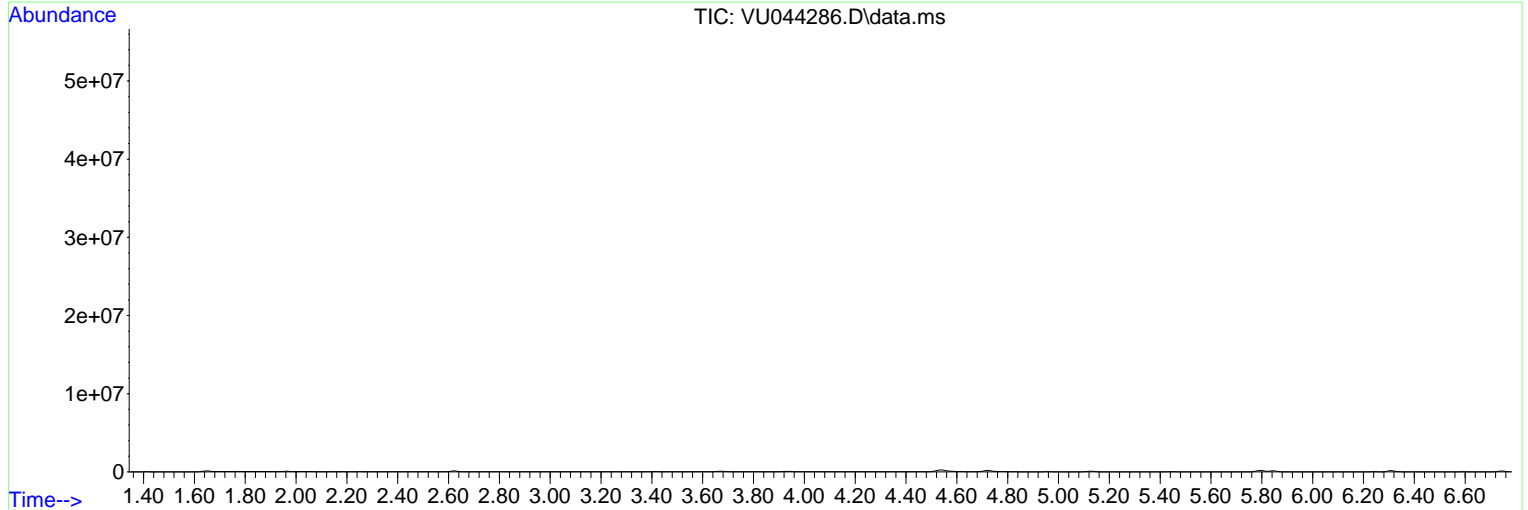
Sum of corrected areas: 227503197

Data Path : Z:\voasrv\HPCHEM1\MSVOA_U\Data\VU070121\
 Data File : VU044286.D
 Acq On : 01 Jul 2021 15:13
 Operator : SY/MD
 Sample : M2905-19
 Misc : 25.0mL/MSVOA_U/WATER
 ALS Vial : 14 Sample Multiplier: 1

Instrument :
 MSVOA_U
ClientSampled :
 DBK28

Quant Method : Z:\voasrv\HPCHEM1\MSVOA_U\Method\SFAMUTR062121WMA.M
 Quant Title : TRACE VOA SFAM1.0

TIC Library : C:\DATABASE\NIST11.L
 TIC Integration Parameters: LSCINT.P



Data Path : Z:\voasrv\HPCHEM1\MSVOA_U\Data\VU070121\
Data File : VU044286.D
Acq On : 01 Jul 2021 15:13
Operator : SY/MD
Sample : M2905-19
Misc : 25.0mL/MSVOA_U/WATER
ALS Vial : 14 Sample Multiplier: 1

Instrument :
MSVOA_U
ClientSampleId :
DBK28

Quant Method : Z:\voasrv\HPCHEM1\MSVOA_U\Method\SFAMUTR062121WMA.M
Quant Title : TRACE VOA SFAM1.0

TIC Library : C:\DATABASE\NIST11.L
TIC Integration Parameters: LSCINT.P

No Library Search Compounds Detected

Data Path : Z:\voasrv\HPCHEM1\MSVOA_U\Data\VU070121\
Data File : VU044286.D
Acq On : 01 Jul 2021 15:13
Operator : SY/MD
Sample : M2905-19
Misc : 25.0mL/MSVOA_U/WATER
ALS Vial : 14 Sample Multiplier: 1

Instrument :
MSVOA_U
ClientSampled :
DBK28

Quant Method : Z:\voasrv\HPCHEM1\MSVOA_U\Method\SFAMUTR062121WMA.M
Quant Title : TRACE VOA SFAM1.0

TIC Library : C:\DATABASE\NIST11.L
TIC Integration Parameters: LSCINT.P

TIC Top Hit name	RT	EstConc	Units	Response	--Internal Standard--		
					#	RT	Resp Conc
