

Data Path : Z:\voasrv\HPCHEM1\MSVOA\_U\Data\VU070122\  
 Data File : VU049582.D  
 Acq On : 01 Jul 2022 14:56  
 Operator : SY/MD  
 Sample : VU0701WBL01  
 Misc : 5.0mL/MSVOA\_U/WATER  
 ALS Vial : 5 Sample Multiplier: 1

Instrument :  
 MSVOA\_U  
 ClientSampleId :  
 VU0701WBL01

Integration Parameters: RTEINT.P

Integrator: RTE  
 Smoothing : ON Filtering: 5  
 Sampling : 1 Min Area: 3 % of largest Peak  
 Start Thrs: 0.2 Max Peaks: 100  
 Stop Thrs : 0 Peak Location: TOP

If leading or trailing edge < 100 prefer < Baseline drop else tangent >  
 Peak separation: 5

Method : Z:\voasrv\HPCHEM1\MSVOA\_U\Method\82U062722W.M  
 Title : SW846 8260

Signal : TIC: VU049582.D\data.ms

peak #	R.T. min	first scan	max scan	last scan	PK TY	peak height	corr. area	corr. % max.	% of total
1	5.288	1212	1228	1241	rBV	186333	390675	33.45%	6.326%
2	5.372	1241	1254	1277	rVB	307031	631209	54.05%	10.221%
3	5.700	1341	1356	1381	rBV	204173	417347	35.74%	6.758%
4	6.250	1511	1527	1552	rBV	461189	872752	74.74%	14.133%
5	7.896	2023	2039	2074	rBV	671521	1167787	100.00%	18.910%
6	9.417	2498	2512	2534	rBV	620615	1025839	87.84%	16.612%
7	10.632	2878	2890	2916	rBV	473457	747618	64.02%	12.106%
8	11.812	3245	3257	3282	rBV	573670	922125	78.96%	14.932%

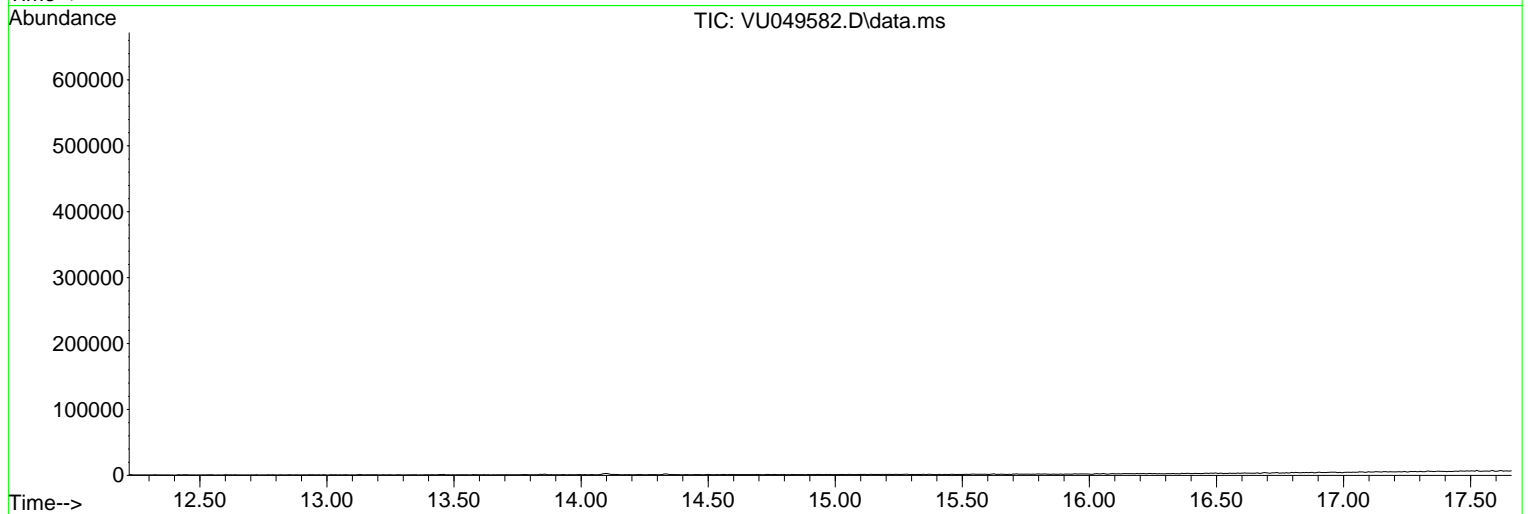
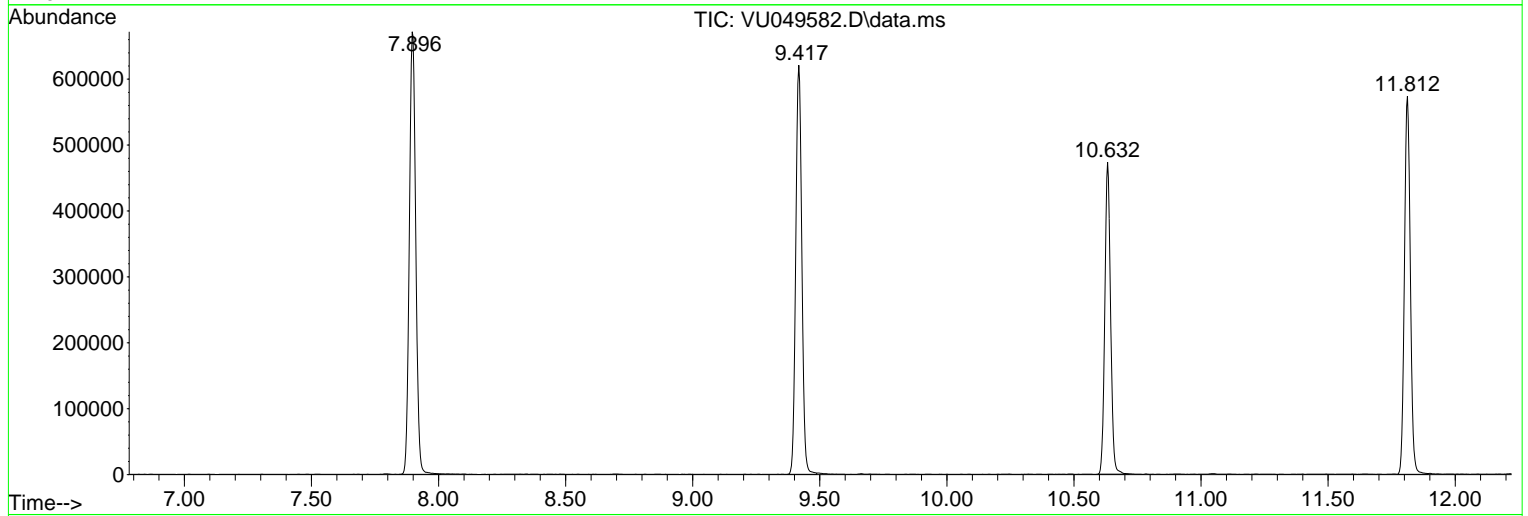
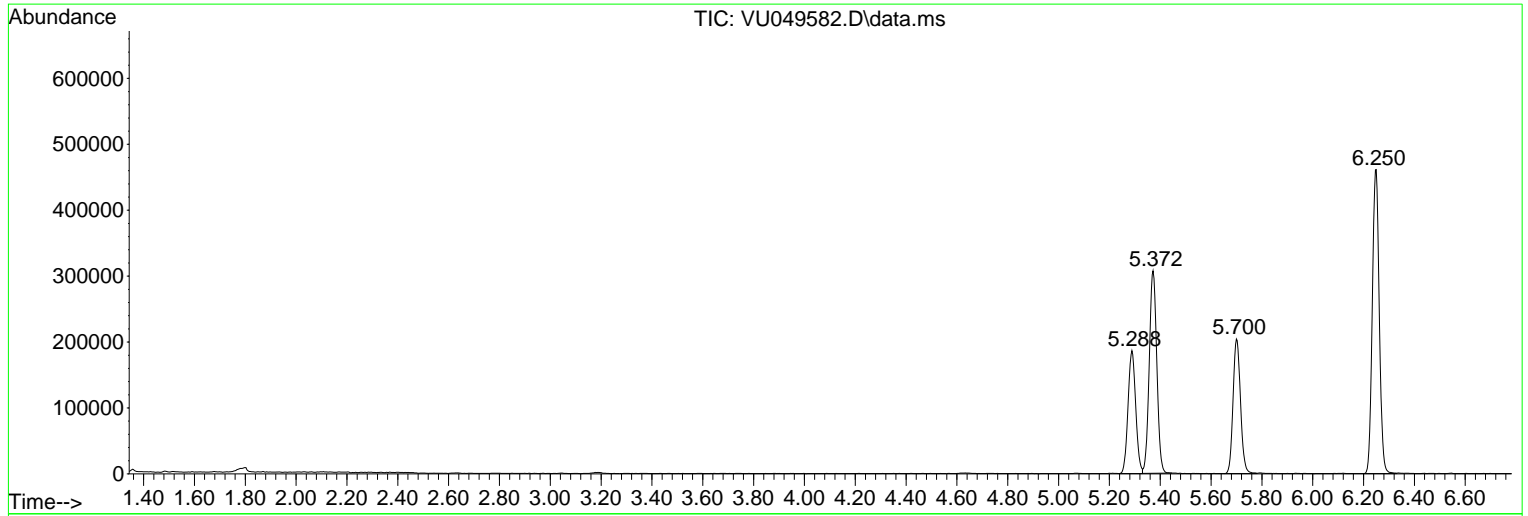
Sum of corrected areas: 6175352

Data Path : Z:\voasrv\HPCHEM1\MSVOA\_U\Data\VU070122\  
 Data File : VU049582.D  
 Acq On : 01 Jul 2022 14:56  
 Operator : SY/MD  
 Sample : VU0701WBL01  
 Misc : 5.0mL/MSVOA\_U/WATER  
 ALS Vial : 5 Sample Multiplier: 1

Instrument :  
 MSVOA\_U  
 ClientSampleId :  
 VU0701WBL01

Quant Method : Z:\voasrv\HPCHEM1\MSVOA\_U\Method\82U062722W.M  
 Quant Title : SW846 8260

TIC Library : C:\Database\NIST20.L  
 TIC Integration Parameters: LSCINT.P



Library Search Compound Report

Data Path : Z:\voasrv\HPCHEM1\MSVOA\_U\Data\VU070122\  
Data File : VU049582.D  
Acq On : 01 Jul 2022 14:56  
Operator : SY/MD  
Sample : VU0701WBL01  
Misc : 5.0mL/MSVOA\_U/WATER  
ALS Vial : 5 Sample Multiplier: 1

Instrument :  
MSVOA\_U  
ClientSampleId :  
VU0701WBL01

Quant Method : Z:\voasrv\HPCHEM1\MSVOA\_U\Method\82U062722W.M  
Quant Title : SW846 8260

TIC Library : C:\Database\NIST20.L  
TIC Integration Parameters: LSCINT.P

No Library Search Compounds Detected

\*\*\*\*\*

Data Path : Z:\voasrv\HPCHEM1\MSVOA\_U\Data\VU070122\  
Data File : VU049582.D  
Acq On : 01 Jul 2022 14:56  
Operator : SY/MD  
Sample : VU0701WBL01  
Misc : 5.0mL/MSVOA\_U/WATER  
ALS Vial : 5 Sample Multiplier: 1

Instrument :  
MSVOA\_U  
ClientSampleId :  
VU0701WBL01

Quant Method : Z:\voasrv\HPCHEM1\MSVOA\_U\Method\82U062722W.M  
Quant Title : SW846 8260

TIC Library : C:\Database\NIST20.L  
TIC Integration Parameters: LSCINT.P

TIC Top Hit name	RT	EstConc	Units	Response	#	RT	Resp	Conc
------------------	----	---------	-------	----------	---	----	------	------

---