

Data Path : Z:\voasrv\HPCHEM1\MSVOA\_U\Data\VU070122\  
 Data File : VU049601.D  
 Acq On : 01 Jul 2022 22:53  
 Operator : SY/MD  
 Sample : N3564-06 10X  
 Misc : 5.50g/5.0mL/100uL/5.0mL/MSVOA\_U/MEOH  
 ALS Vial : 25 Sample Multiplier: 1

Instrument :  
 MSVOA\_U  
 ClientSampleId :  
 WC-14B-11-2

Integration Parameters: RTEINT.P

Integrator: RTE  
 Smoothing : ON Filtering: 5  
 Sampling : 1 Min Area: 3 % of largest Peak  
 Start Thrs: 0.2 Max Peaks: 100  
 Stop Thrs : 0 Peak Location: TOP

If leading or trailing edge < 100 prefer < Baseline drop else tangent >  
 Peak separation: 5

Method : Z:\voasrv\HPCHEM1\MSVOA\_U\Method\82U062722W.M  
 Title : SW846 8260

Signal : TIC: VU049601.D\data.ms

peak #	R.T. min	first scan	max scan	last scan	PK TY	peak height	corr. area	corr. % max.	% of total
1	3.073	532	539	554	rVB	27446	53960	3.15%	0.125%
2	3.353	610	626	644	rVB2	63916	144757	8.46%	0.335%
3	5.286	1212	1227	1240	rBV	215506	458578	26.81%	1.062%
4	5.372	1240	1254	1270	rVV2	454738	1024154	59.87%	2.371%
5	5.459	1270	1281	1300	rVB2	59531	139825	8.17%	0.324%
6	5.588	1305	1321	1330	rBV	82389	184083	10.76%	0.426%
7	5.700	1345	1356	1374	rVB	234714	471151	27.54%	1.091%
8	5.845	1384	1401	1413	rBV	129671	271875	15.89%	0.629%
9	5.919	1413	1424	1434	rVV	102152	212523	12.42%	0.492%
10	5.986	1434	1445	1467	rVB	161038	346897	20.28%	0.803%
11	6.247	1509	1526	1548	rBV	563351	1101043	64.36%	2.549%
12	6.761	1663	1686	1709	rBV	732177	1710646	100.00%	3.961%
13	6.864	1709	1718	1731	rVB2	51030	95825	5.60%	0.222%
14	6.977	1741	1753	1766	rBV3	65544	121123	7.08%	0.280%
15	7.070	1767	1782	1798	rVB2	122664	248669	14.54%	0.576%
16	7.234	1821	1833	1852	rVB3	146412	304285	17.79%	0.705%
17	7.398	1869	1884	1886	rBV2	38592	61320	3.58%	0.142%
18	7.536	1918	1927	1936	rVB	73738	110850	6.48%	0.257%
19	7.691	1970	1975	1984	rVB	45078	68362	4.00%	0.158%
20	7.758	1984	1996	2012	rVB6	92046	192863	11.27%	0.447%
21	7.855	2012	2026	2031	rBV2	402388	724849	42.37%	1.678%
22	7.896	2031	2039	2055	rVB	943733	1678400	98.11%	3.886%
23	8.028	2067	2080	2094	rBV6	97313	326298	19.07%	0.755%
24	8.096	2095	2101	2112	rVV2	118182	201401	11.77%	0.466%
25	8.157	2112	2120	2133	rVV5	26425	65306	3.82%	0.151%
26	8.240	2133	2146	2161	rVB3	270584	543121	31.75%	1.258%
27	8.366	2173	2185	2194	rBV	132474	242600	14.18%	0.562%
28	8.414	2194	2200	2212	rVV5	40883	85050	4.97%	0.197%
29	8.472	2213	2218	2228	rVB4	33776	53737	3.14%	0.124%
30	8.536	2228	2238	2250	rVB3	69531	120281	7.03%	0.278%
31	8.633	2250	2268	2282	rBV	226596	437943	25.60%	1.014%
32	8.755	2296	2306	2313	rBV2	111027	212227	12.41%	0.491%
33	8.803	2313	2321	2330	rVB6	107489	186357	10.89%	0.431%
34	8.864	2331	2340	2349	rVB	307694	468260	27.37%	1.084%
35	8.922	2349	2358	2368	rBV	360501	592846	34.66%	1.373%
36	9.070	2392	2404	2412	rBV4	120681	223831	13.08%	0.518%

Data Path : Z:\voasrv\HPCHEM1\MSVOA\_U\Data\VU070122\  
 Data File : VU049601.D  
 Acq On : 01 Jul 2022 22:53  
 Operator : SY/MD  
 Sample : N3564-06 10X  
 Misc : 5.50g/5.0mL/100uL/5.0mL/MSVOA\_U/MEOH  
 ALS Vial : 25 Sample Multiplier: 1

Instrument :  
 MSVOA\_U  
 ClientSampleId :  
 WC-14B-11-2

Integration Parameters: RTEINT.P

Integrator: RTE  
 Smoothing : ON  
 Sampling : 1  
 Start Thrs: 0.2  
 Stop Thrs : 0

Filtering: 5  
 Min Area: 3 % of largest Peak  
 Max Peaks: 100  
 Peak Location: TOP

If leading or trailing edge < 100 prefer < Baseline drop else tangent >  
 Peak separation: 5

Method : Z:\voasrv\HPCHEM1\MSVOA\_U\Method\82U062722W.M  
 Title : SW846 8260

37	9.118	2412	2419	2426	rVV	132033	194926	11.39%	0.451%
38	9.166	2426	2434	2443	rVV3	210059	366070	21.40%	0.848%
39	9.208	2444	2447	2457	rVB4	72182	93882	5.49%	0.217%
40	9.330	2470	2485	2501	rBV3	136363	260490	15.23%	0.603%
41	9.417	2501	2512	2522	rBV	742307	1217781	71.19%	2.820%
42	9.514	2536	2542	2550	rBV4	34607	48627	2.84%	0.113%
43	9.559	2551	2556	2571	rVB3	88407	159131	9.30%	0.368%
44	9.665	2571	2589	2596	rBV5	155950	423412	24.75%	0.980%
45	9.716	2597	2605	2612	rVV2	235102	366321	21.41%	0.848%
46	9.758	2612	2618	2643	rVB3	167761	363853	21.27%	0.842%
47	9.880	2644	2656	2670	rBV8	82636	208848	12.21%	0.484%
48	9.951	2671	2678	2688	rBV6	30186	48999	2.86%	0.113%
49	10.028	2688	2702	2713	rBV7	253696	671570	39.26%	1.555%
50	10.121	2723	2731	2741	rBV5	109335	213060	12.45%	0.493%
51	10.250	2755	2771	2785	rBV4	502199	1210858	70.78%	2.804%
52	10.356	2795	2804	2811	rBV3	371838	672689	39.32%	1.558%
53	10.478	2832	2842	2851	rVB5	139406	288100	16.84%	0.667%
54	10.555	2852	2866	2876	rBV9	195055	463075	27.07%	1.072%
55	10.629	2877	2889	2902	rVB3	690066	1225179	71.62%	2.837%
56	10.697	2903	2910	2916	rBV2	81131	127889	7.48%	0.296%
57	10.764	2925	2931	2935	rBV5	50000	82160	4.80%	0.190%
58	10.809	2937	2945	2962	rVB6	308604	588762	34.42%	1.363%
59	10.906	2968	2975	2981	rBV	106520	149481	8.74%	0.346%
60	10.951	2982	2989	3000	rVB4	98482	170168	9.95%	0.394%
61	11.015	3002	3009	3015	rBV4	108529	182153	10.65%	0.422%
62	11.063	3016	3024	3034	rVB3	255809	415441	24.29%	0.962%
63	11.186	3055	3062	3072	rBV8	65730	119536	6.99%	0.277%
64	11.243	3074	3080	3086	rBV3	58118	80246	4.69%	0.186%
65	11.311	3087	3101	3113	rVB9	182889	450851	26.36%	1.044%
66	11.375	3114	3121	3126	rBV5	92671	138955	8.12%	0.322%
67	11.417	3126	3134	3141	rVB	342916	463935	27.12%	1.074%
68	11.462	3142	3148	3152	rBV4	63195	92868	5.43%	0.215%
69	11.571	3175	3182	3187	rBV3	88843	142981	8.36%	0.331%
70	11.642	3198	3204	3215	rVB3	294531	487733	28.51%	1.129%
71	11.713	3218	3226	3232	rBV	300089	451885	26.42%	1.046%
72	11.813	3248	3257	3271	rVB	779587	1347303	78.76%	3.119%
73	12.096	3336	3345	3356	rBV2	251367	438858	25.65%	1.016%
74	12.182	3364	3372	3389	rVB6	373968	892048	52.15%	2.065%
75	12.571	3487	3493	3500	rVB	314638	420140	24.56%	0.973%
76	12.838	3571	3576	3591	rVB6	293947	550562	32.18%	1.275%

Data Path : Z:\voasrv\HPCHEM1\MSVOA\_U\Data\VU070122\  
 Data File : VU049601.D  
 Acq On : 01 Jul 2022 22:53  
 Operator : SY/MD  
 Sample : N3564-06 10X  
 Misc : 5.50g/5.0mL/100uL/5.0mL/MSVOA\_U/MEOH  
 ALS Vial : 25 Sample Multiplier: 1

Instrument :  
 MSVOA\_U  
 ClientSampleId :  
 WC-14B-11-2

Integration Parameters: RTEINT.P

Integrator: RTE  
 Smoothing : ON Filtering: 5  
 Sampling : 1 Min Area: 3 % of largest Peak  
 Start Thrs: 0.2 Max Peaks: 100  
 Stop Thrs : 0 Peak Location: TOP

If leading or trailing edge < 100 prefer < Baseline drop else tangent >  
 Peak separation: 5

Method : Z:\voasrv\HPCHEM1\MSVOA\_U\Method\82U062722W.M  
 Title : SW846 8260

77	12.928	3596	3604	3611	rVV5	303211	584526	34.17%	1.353%
78	12.970	3613	3617	3628	rVB	330557	497397	29.08%	1.152%
79	13.108	3653	3660	3673	rVB3	138547	262460	15.34%	0.608%
80	13.198	3683	3688	3698	rBV2	96555	158085	9.24%	0.366%
81	13.449	3758	3766	3784	rVB5	742623	1446042	84.53%	3.348%
82	13.735	3849	3855	3862	rBV6	115394	171049	10.00%	0.396%
83	13.784	3864	3870	3878	rVB	179269	266795	15.60%	0.618%
84	13.838	3879	3887	3896	rBV6	256508	500638	29.27%	1.159%
85	14.121	3967	3975	3984	rBV5	223475	374792	21.91%	0.868%
86	14.668	4137	4145	4157	rVB8	348093	697771	40.79%	1.616%
87	14.877	4206	4210	4219	rVB3	259032	356435	20.84%	0.825%
88	15.021	4247	4255	4268	rBV6	215522	474223	27.72%	1.098%
89	15.272	4327	4333	4342	rVB4	194022	302461	17.68%	0.700%
90	15.411	4370	4376	4387	rVB2	248022	431370	25.22%	0.999%
91	16.147	4598	4605	4612	rBV3	333860	525784	30.74%	1.217%
92	16.259	4632	4640	4651	rVB	852553	1335901	78.09%	3.093%
93	16.407	4677	4686	4692	rBV	1007708	1559446	91.16%	3.611%
94	16.446	4693	4698	4714	rVB	709495	1129711	66.04%	2.616%
95	16.783	4797	4803	4825	rVB4	191413	383029	22.39%	0.887%
96	17.115	4900	4906	4919	rVB	199183	302189	17.67%	0.700%
97	17.324	4966	4971	4979	rVB2	292201	416193	24.33%	0.964%
98	17.375	4980	4987	5003	rVB	314624	540860	31.62%	1.252%
99	17.539	5030	5038	5048	rVB2	258549	434721	25.41%	1.007%
100	17.603	5051	5058	5067	rBV2	157987	261783	15.30%	0.606%

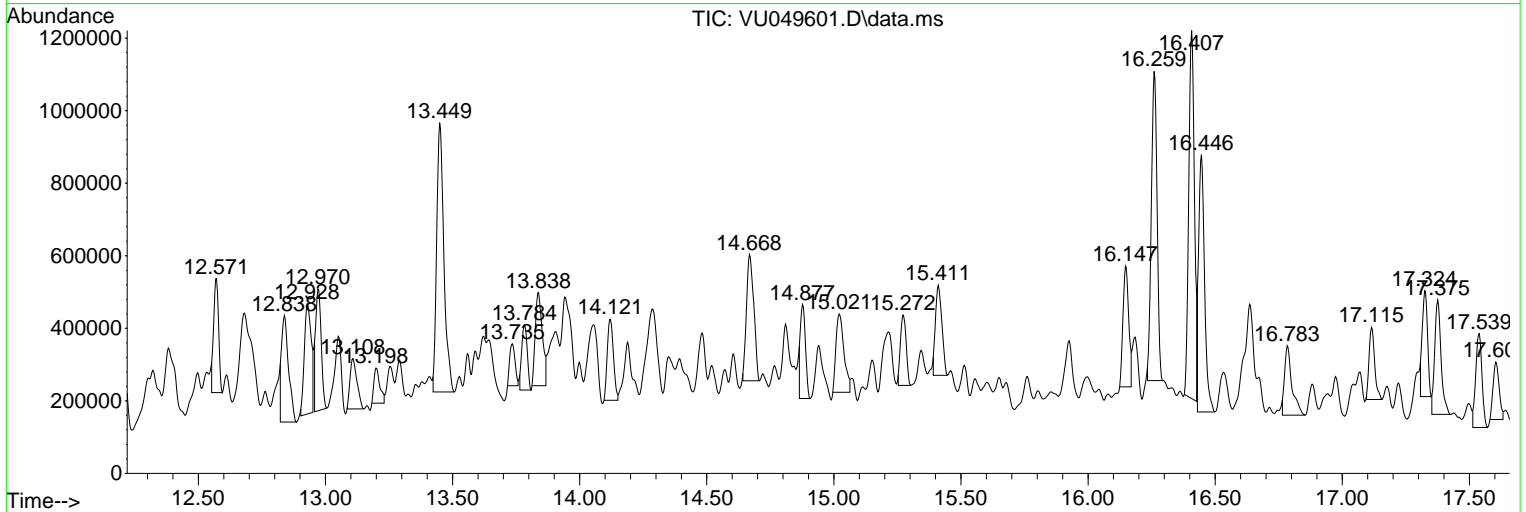
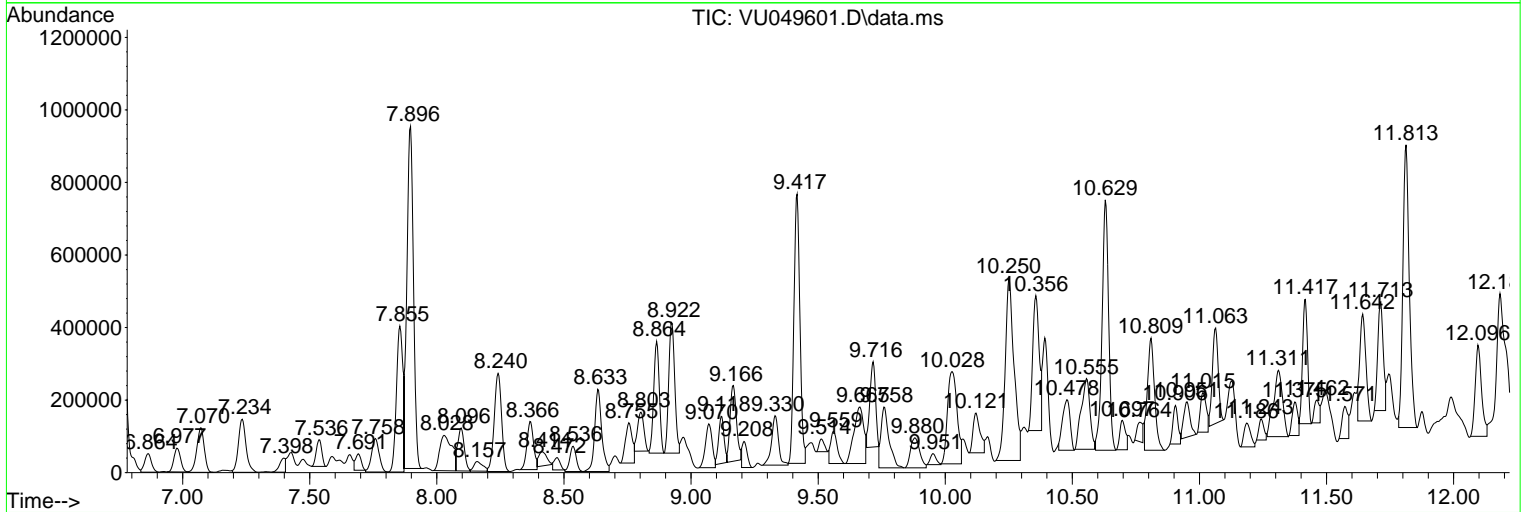
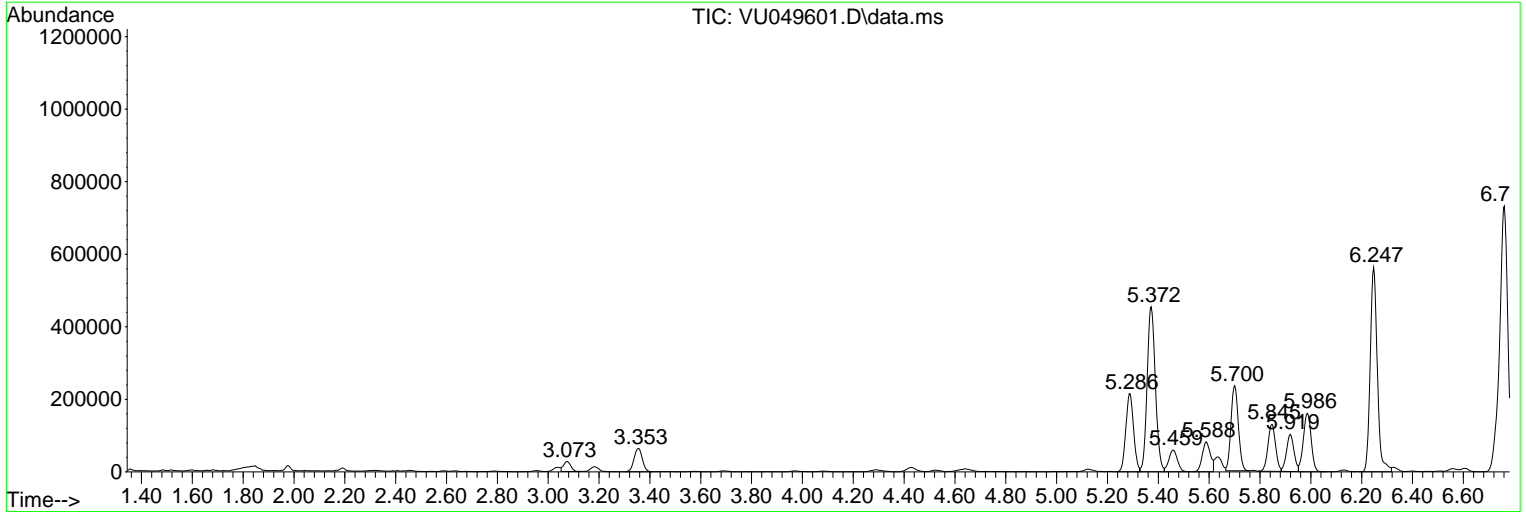
Sum of corrected areas: 43189783

Data Path : Z:\voasrv\HPCHEM1\MSVOA\_U\Data\VU070122\  
 Data File : VU049601.D  
 Acq On : 01 Jul 2022 22:53  
 Operator : SY/MD  
 Sample : N3564-06 10X  
 Misc : 5.50g/5.0mL/100uL/5.0mL/MSVOA\_U/MEOH  
 ALS Vial : 25 Sample Multiplier: 1

Instrument :  
 MSVOA\_U  
 ClientSampleId :  
 WC-14B-11-2

Quant Method : Z:\voasrv\HPCHEM1\MSVOA\_U\Method\82U062722W.M  
 Quant Title : SW846 8260

TIC Library : C:\Database\NIST20.L  
 TIC Integration Parameters: LSCINT.P



Data Path : Z:\voasrv\HPCHEM1\MSVOA\_U\Data\VU070122\  
 Data File : VU049601.D  
 Acq On : 01 Jul 2022 22:53  
 Operator : SY/MD  
 Sample : N3564-06 10X  
 Misc : 5.50g/5.0mL/100uL/5.0mL/MSVOA\_U/MEOH  
 ALS Vial : 25 Sample Multiplier: 1

Instrument :  
 MSVOA\_U  
 ClientSampleId :  
 WC-14B-11-2

Quant Method : Z:\voasrv\HPCHEM1\MSVOA\_U\Method\82U062722W.M  
 Quant Title : SW846 8260

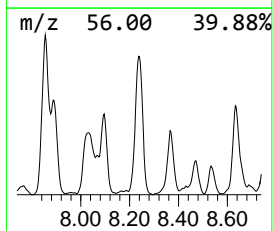
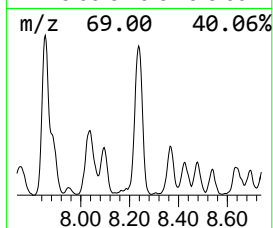
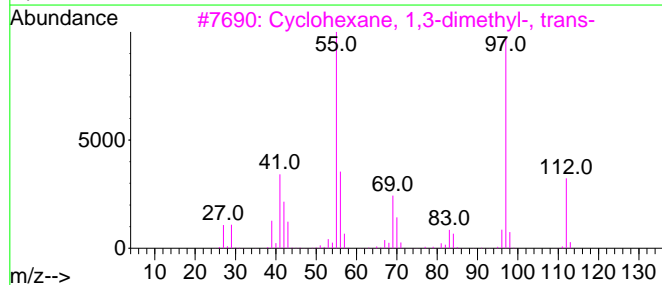
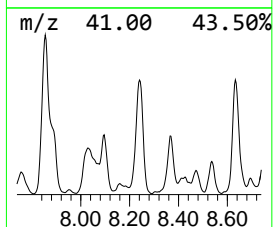
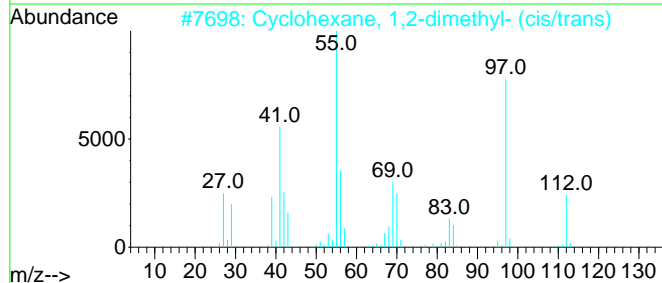
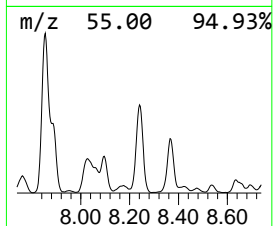
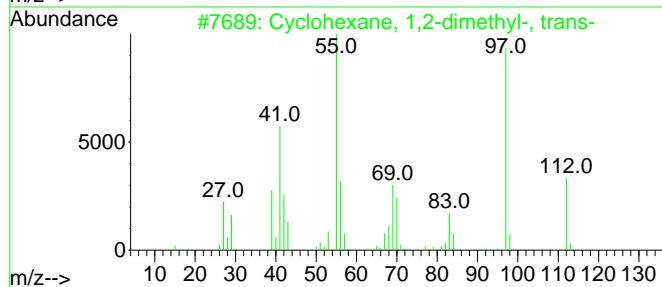
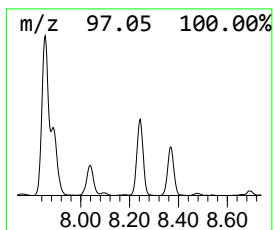
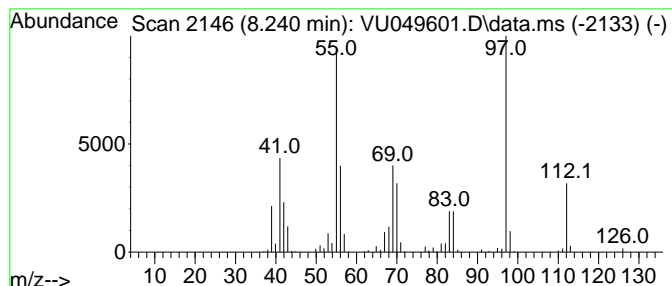
TIC Library : C:\Database\NIST20.L  
 TIC Integration Parameters: LSCINT.P

\*\*\*\*\*  
 Peak Number 1 Cyclohexane, 1,2-dimethyl-,... Concentration Rank 10

R.T.	EstConc	Area	Relative to ISTD	R.T.
8.240	22.30 ug/l	543121	Chlorobenzene-d5	9.417

Hit#	of 5	Tentative ID	MW	MolForm	CAS#	Qual
1		Cyclohexane, 1,2-dimethyl-, trans-	112	C8H16	006876-23-9	97
2		Cyclohexane, 1,2-dimethyl- (cis/...	112	C8H16	000583-57-3	94
3		Cyclohexane, 1,3-dimethyl-, trans-	112	C8H16	002207-03-6	86
4		1H-Pyrazole, 4,5-dihydro-3,5,5-t...	112	C6H12N2	003975-85-7	76
5		Cyclohexane, 1,4-dimethyl-	112	C8H16	000589-90-2	72



Data Path : Z:\voasrv\HPCHEM1\MSVOA\_U\Data\VU070122\  
 Data File : VU049601.D  
 Acq On : 01 Jul 2022 22:53  
 Operator : SY/MD  
 Sample : N3564-06 10X  
 Misc : 5.50g/5.0mL/100uL/5.0mL/MSVOA\_U/MEOH  
 ALS Vial : 25 Sample Multiplier: 1

Instrument :  
 MSVOA\_U  
 ClientSampleId :  
 WC-14B-11-2

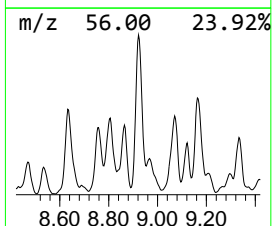
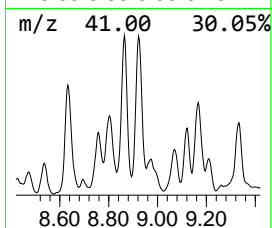
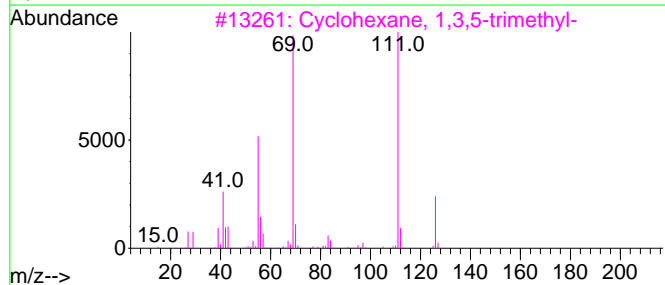
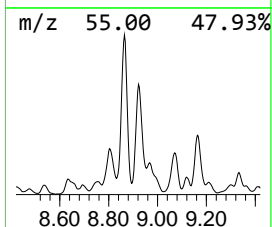
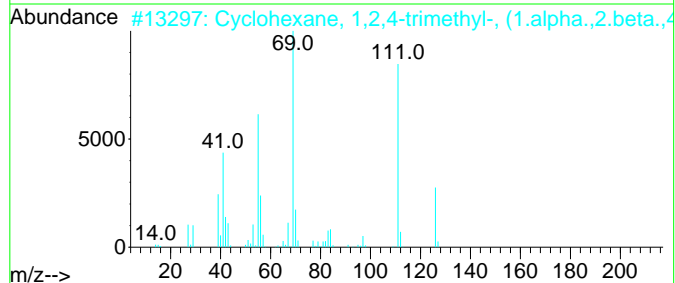
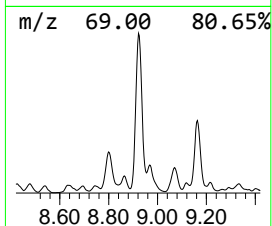
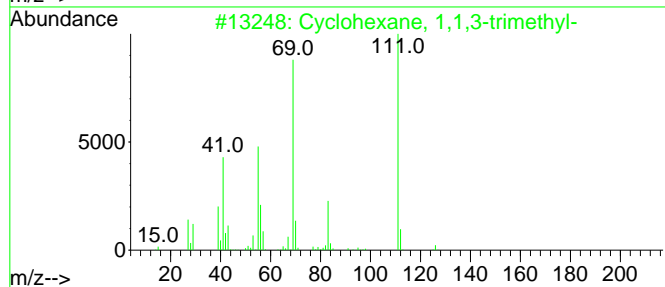
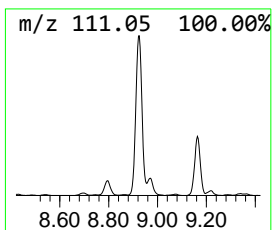
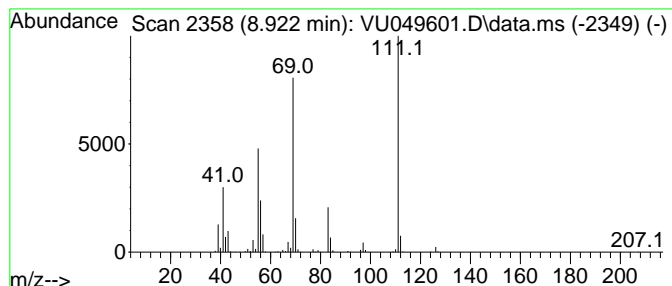
Quant Method : Z:\voasrv\HPCHEM1\MSVOA\_U\Method\82U062722W.M  
 Quant Title : SW846 8260

TIC Library : C:\Database\NIST20.L  
 TIC Integration Parameters: LSCINT.P

\*\*\*\*\*  
 Peak Number 2 Cyclohexane, 1,1,3-trimethyl- Concentration Rank 9

R.T.	EstConc	Area	Relative to ISTD	R.T.
8.922	24.34 ug/l	592846	Chlorobenzene-d5	9.417

Hit#	of	5	Tentative ID	MW	MolForm	CAS#	Qual
1			Cyclohexane, 1,1,3-trimethyl-	126	C9H18	003073-66-3	91
2			Cyclohexane, 1,2,4-trimethyl-, (...)	126	C9H18	007667-60-9	56
3			Cyclohexane, 1,3,5-trimethyl-	126	C9H18	001839-63-0	56
4			Cyclohexane, 1-ethyl-2,4-dimethyl-	140	C10H20	061142-69-6	56
5			Cyclooctane, butyl-	168	C12H24	016538-93-5	56



Data Path : Z:\voasrv\HPCHEM1\MSVOA\_U\Data\VU070122\  
 Data File : VU049601.D  
 Acq On : 01 Jul 2022 22:53  
 Operator : SY/MD  
 Sample : N3564-06 10X  
 Misc : 5.50g/5.0mL/100uL/5.0mL/MSVOA\_U/MEOH  
 ALS Vial : 25 Sample Multiplier: 1

Instrument :  
 MSVOA\_U  
 ClientSampleId :  
 WC-14B-11-2

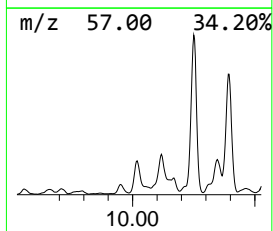
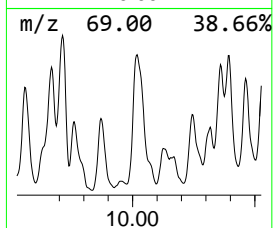
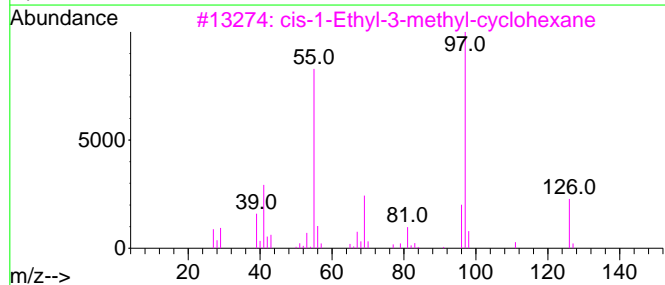
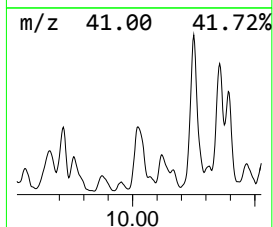
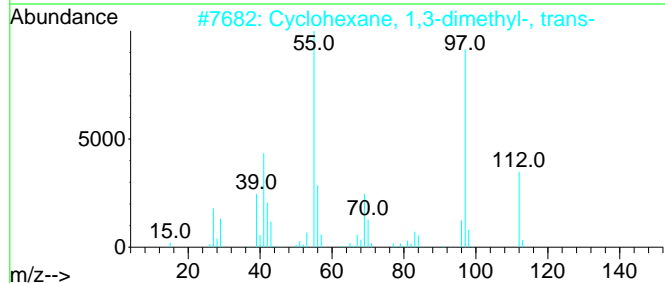
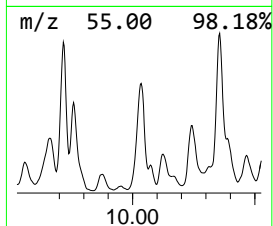
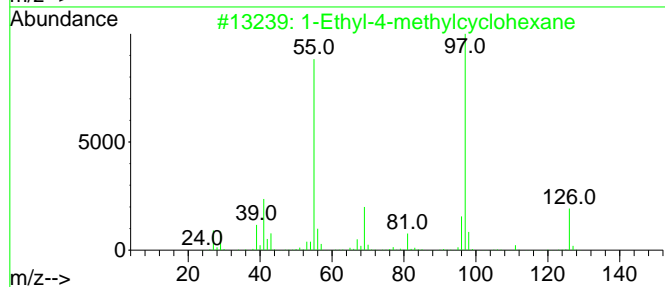
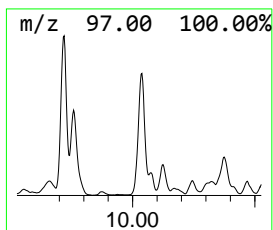
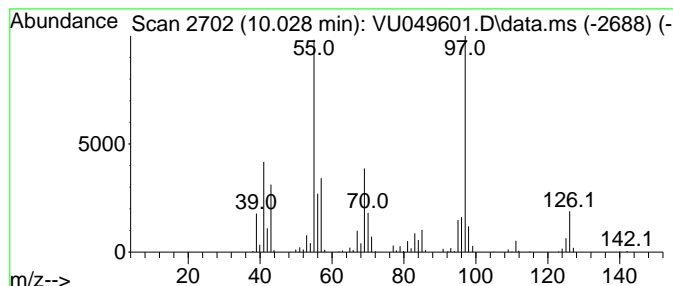
Quant Method : Z:\voasrv\HPCHEM1\MSVOA\_U\Method\82U062722W.M  
 Quant Title : SW846 8260

TIC Library : C:\Database\NIST20.L  
 TIC Integration Parameters: LSCINT.P

\*\*\*\*\*  
 Peak Number 3 1-Ethyl-4-methylcyclohexane Concentration Rank 7

R.T.	EstConc	Area	Relative to ISTD	R.T.
10.028	27.57 ug/l	671570	Chlorobenzene-d5	9.417

Hit#	of	5	Tentative ID	MW	MolForm	CAS#	Qual
1			1-Ethyl-4-methylcyclohexane	126	C9H18	003728-56-1	74
2			Cyclohexane, 1,3-dimethyl-, trans-	112	C8H16	002207-03-6	64
3			cis-1-Ethyl-3-methyl-cyclohexane	126	C9H18	019489-10-2	64
4			3,5-Dimethyl-3-heptene	126	C9H18	059643-68-4	62
5			Cyclohexane, 1-ethyl-2-methyl-	126	C9H18	003728-54-9	59



Data Path : Z:\voasrv\HPCHEM1\MSVOA\_U\Data\VU070122\  
 Data File : VU049601.D  
 Acq On : 01 Jul 2022 22:53  
 Operator : SY/MD  
 Sample : N3564-06 10X  
 Misc : 5.50g/5.0mL/100uL/5.0mL/MSVOA\_U/MEOH  
 ALS Vial : 25 Sample Multiplier: 1

Instrument :  
 MSVOA\_U  
 ClientSampleId :  
 WC-14B-11-2

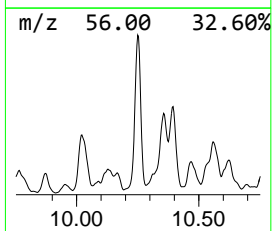
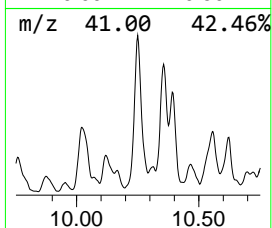
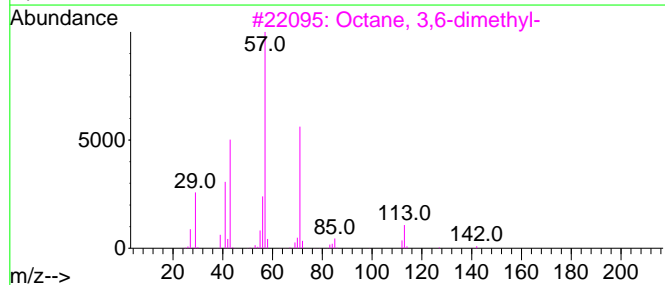
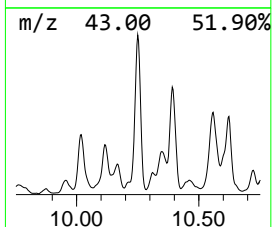
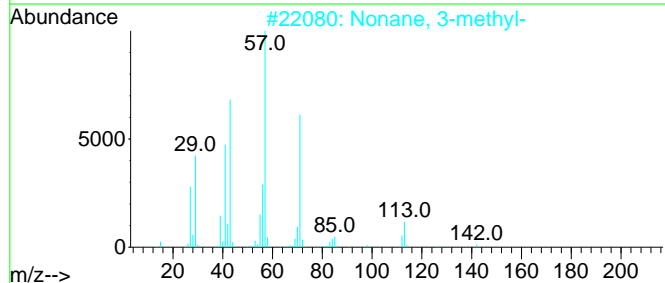
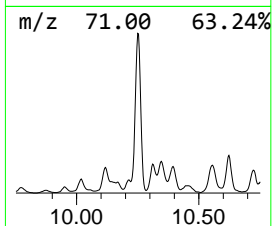
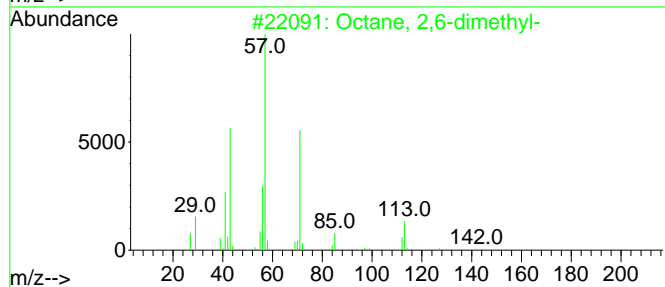
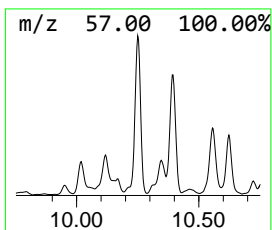
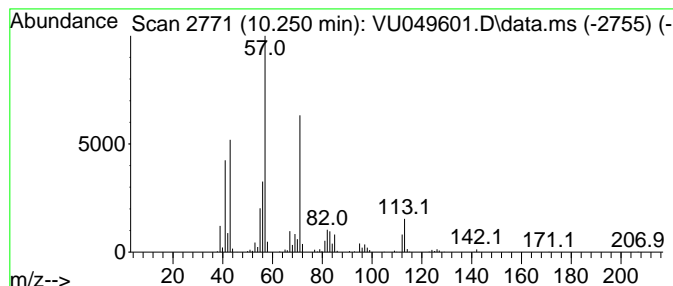
Quant Method : Z:\voasrv\HPCHEM1\MSVOA\_U\Method\82U062722W.M  
 Quant Title : SW846 8260

TIC Library : C:\Database\NIST20.L  
 TIC Integration Parameters: LSCINT.P

\*\*\*\*\*  
 Peak Number 4 Octane, 2,6-dimethyl- Concentration Rank 3

R.T.	EstConc	Area	Relative to ISTD	R.T.
10.250	49.72 ug/l	1210860	Chlorobenzene-d5	9.417

Hit#	of	5	Tentative ID	MW	MolForm	CAS#	Qual
1			Octane, 2,6-dimethyl-	142	C10H22	002051-30-1	90
2			Nonane, 3-methyl-	142	C10H22	005911-04-6	90
3			Octane, 3,6-dimethyl-	142	C10H22	015869-94-0	90
4			Sulfurous acid, decyl 2-ethylhex...	334	C18H38O3S	1000309-19-3	59
5			Sulfurous acid, 2-ethylhexyl hex...	278	C14H30O3S	1000309-20-2	59





Data Path : Z:\voasrv\HPCHEM1\MSVOA\_U\Data\VU070122\  
 Data File : VU049601.D  
 Acq On : 01 Jul 2022 22:53  
 Operator : SY/MD  
 Sample : N3564-06 10X  
 Misc : 5.50g/5.0mL/100uL/5.0mL/MSVOA\_U/MEOH  
 ALS Vial : 25 Sample Multiplier: 1

Instrument :  
 MSVOA\_U  
 ClientSampleId :  
 WC-14B-11-2

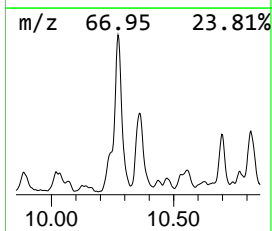
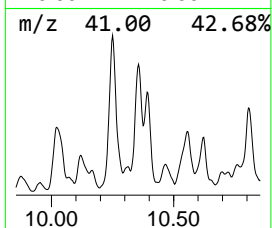
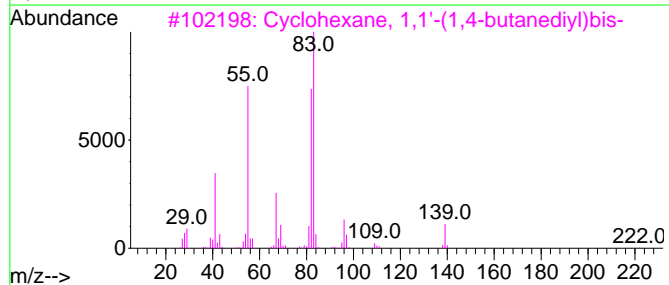
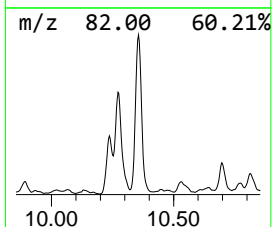
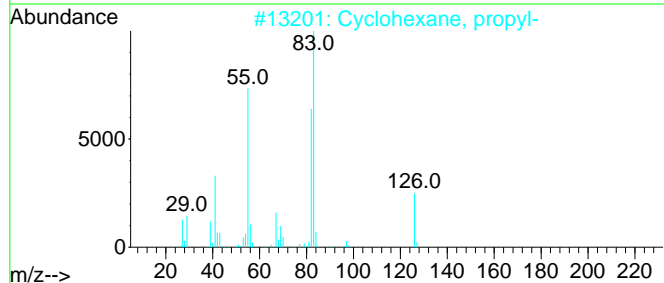
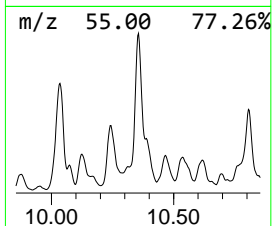
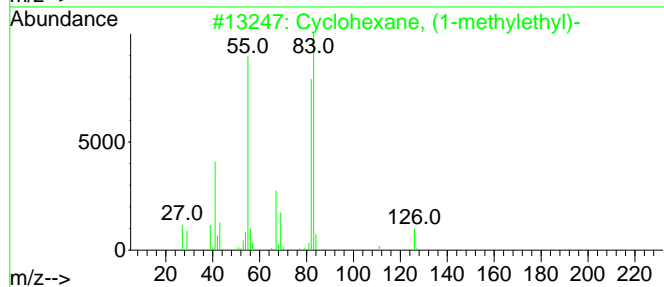
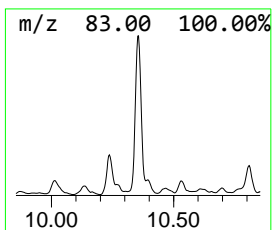
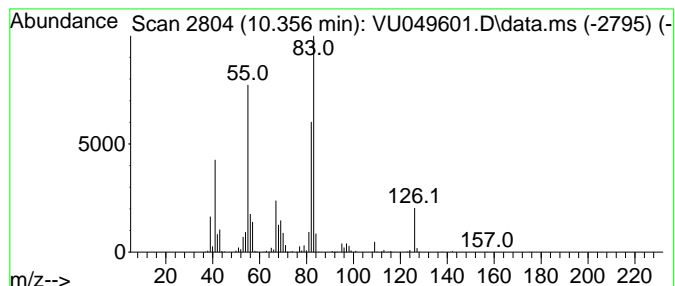
Quant Method : Z:\voasrv\HPCHEM1\MSVOA\_U\Method\82U062722W.M  
 Quant Title : SW846 8260

TIC Library : C:\Database\NIST20.L  
 TIC Integration Parameters: LSCINT.P

\*\*\*\*\*  
 Peak Number 5 Cyclohexane, (1-methylethyl)- Concentration Rank 6

R.T.	EstConc	Area	Relative to ISTD	R.T.
10.356	27.62 ug/l	672689	Chlorobenzene-d5	9.417

Hit#	of	5	Tentative ID	MW	MolForm	CAS#	Qual
1			Cyclohexane, (1-methylethyl)-	126	C9H18	000696-29-7	90
2			Cyclohexane, propyl-	126	C9H18	001678-92-8	87
3			Cyclohexane, 1,1'-(1,4-butanediyl)bis-	222	C16H30	006165-44-2	72
4			Acetic acid, mercapto-, cyclohex...	174	C8H14O2S	016849-98-2	64
5			Cyclohexane, butyl-	140	C10H20	001678-93-9	64



Data Path : Z:\voasrv\HPCHEM1\MSVOA\_U\Data\VU070122\  
 Data File : VU049601.D  
 Acq On : 01 Jul 2022 22:53  
 Operator : SY/MD  
 Sample : N3564-06 10X  
 Misc : 5.50g/5.0mL/100uL/5.0mL/MSVOA\_U/MEOH  
 ALS Vial : 25 Sample Multiplier: 1

Instrument :  
 MSVOA\_U  
 ClientSampleId :  
 WC-14B-11-2

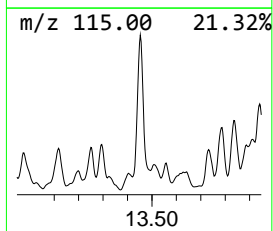
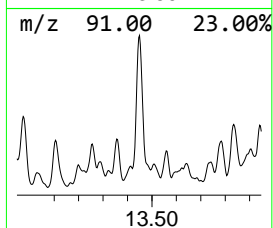
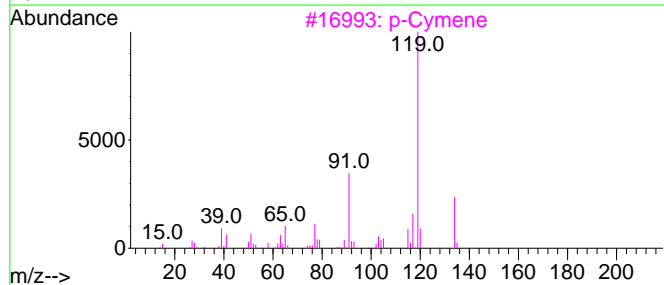
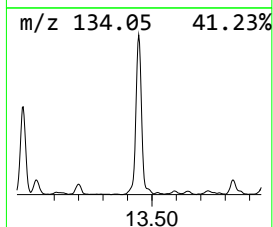
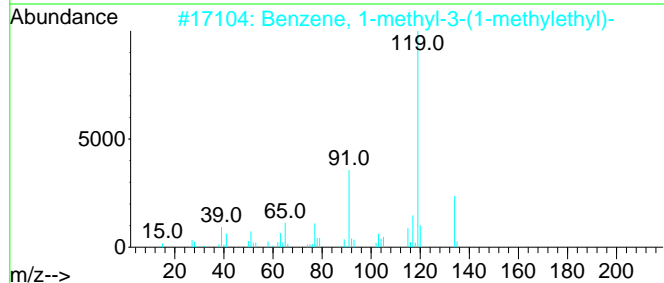
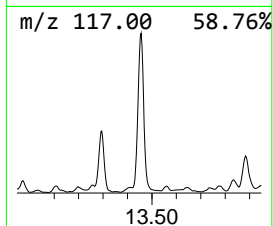
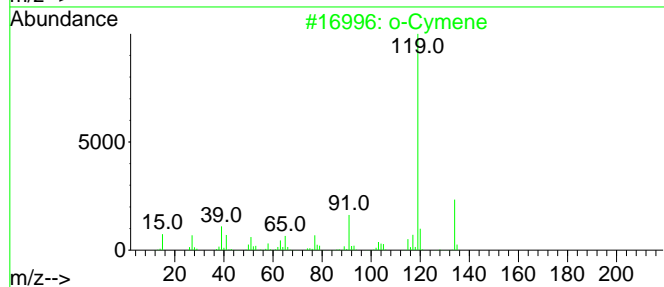
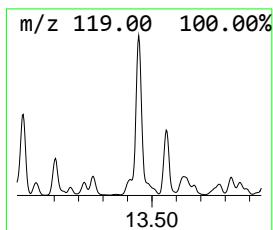
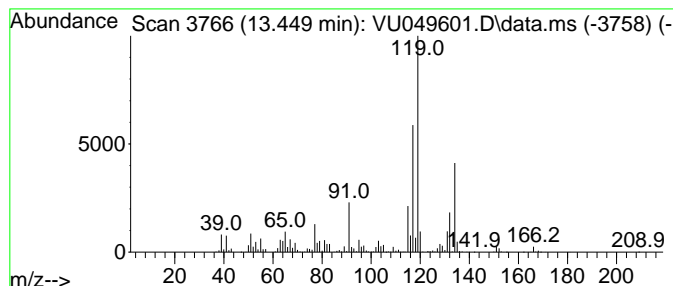
Quant Method : Z:\voasrv\HPCHEM1\MSVOA\_U\Method\82U062722W.M  
 Quant Title : SW846 8260

TIC Library : C:\Database\NIST20.L  
 TIC Integration Parameters: LSCINT.P

\*\*\*\*\*  
 Peak Number 6 o-Cymene Concentration Rank 2

R.T.	EstConc	Area	Relative to ISTD	R.T.
13.449	53.66 ug/l	1446040	1,4-Dichlorobenzene-d4	11.813

Hit#	of	5	Tentative ID	MW	MolForm	CAS#	Qual
1			o-Cymene	134	C10H14	000527-84-4	64
2			Benzene, 1-methyl-3-(1-methyleth...	134	C10H14	000535-77-3	64
3			p-Cymene	134	C10H14	000099-87-6	64
4			Ethanone, 1-(4-methylphenyl)-	134	C9H10O	000122-00-9	60
5			Benzene, 1,2,3,5-tetramethyl-	134	C10H14	000527-53-7	60



Data Path : Z:\voasrv\HPCHEM1\MSVOA\_U\Data\VU070122\  
 Data File : VU049601.D  
 Acq On : 01 Jul 2022 22:53  
 Operator : SY/MD  
 Sample : N3564-06 10X  
 Misc : 5.50g/5.0mL/100uL/5.0mL/MSVOA\_U/MEOH  
 ALS Vial : 25 Sample Multiplier: 1

Instrument :  
 MSVOA\_U  
 ClientSampleId :  
 WC-14B-11-2

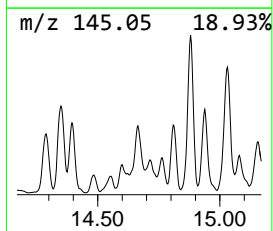
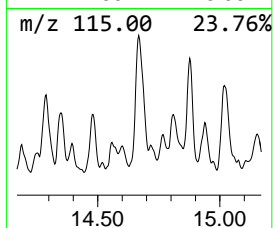
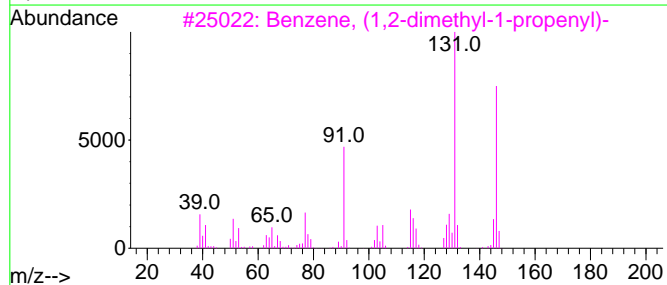
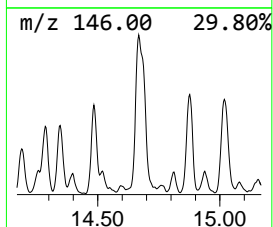
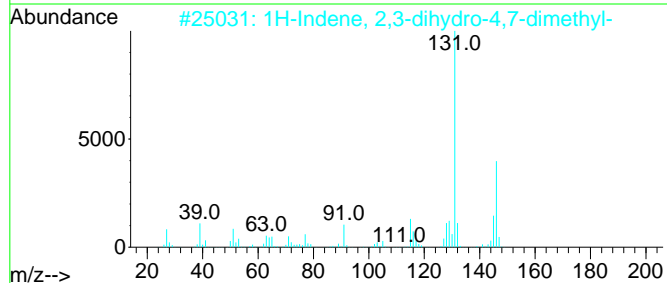
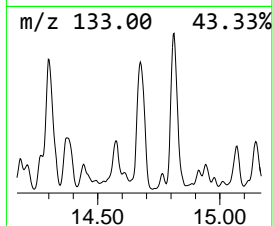
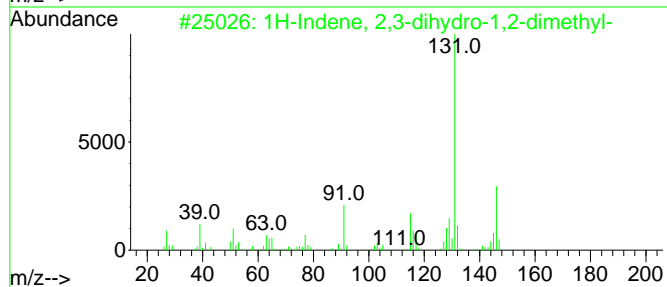
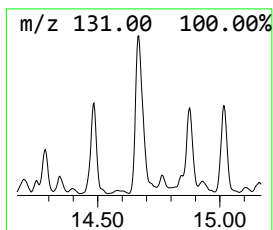
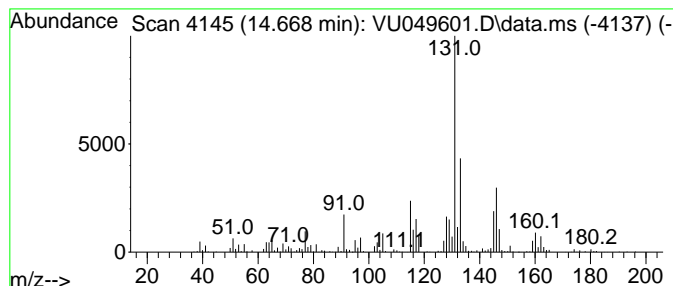
Quant Method : Z:\voasrv\HPCHEM1\MSVOA\_U\Method\82U062722W.M  
 Quant Title : SW846 8260

TIC Library : C:\Database\NIST20.L  
 TIC Integration Parameters: LSCINT.P

\*\*\*\*\*  
 Peak Number 7 1H-Indene, 2,3-dihydro-1,2-... Concentration Rank 8

R.T.	EstConc	Area	Relative to ISTD	R.T.
14.668	25.90 ug/l	697771	1,4-Dichlorobenzene-d4	11.813

Hit#	of	5	Tentative ID	MW	MolForm	CAS#	Qual
1			1H-Indene, 2,3-dihydro-1,2-dimet...	146	C11H14	017057-82-8	70
2			1H-Indene, 2,3-dihydro-4,7-dimet...	146	C11H14	006682-71-9	70
3			Benzene, (1,2-dimethyl-1-propenyl)-	146	C11H14	000769-57-3	64
4			Naphthalene, 1,2,3,4-tetrahydro-...	146	C11H14	001559-81-5	64
5			1H-Indene, 2,3-dihydro-5,6-dimet...	146	C11H14	001075-22-5	64



Data Path : Z:\voasrv\HPCHEM1\MSVOA\_U\Data\VU070122\  
 Data File : VU049601.D  
 Acq On : 01 Jul 2022 22:53  
 Operator : SY/MD  
 Sample : N3564-06 10X  
 Misc : 5.50g/5.0mL/100uL/5.0mL/MSVOA\_U/MEOH  
 ALS Vial : 25 Sample Multiplier: 1

Instrument :  
 MSVOA\_U  
 ClientSampleId :  
 WC-14B-11-2

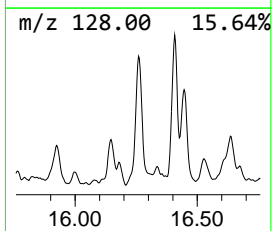
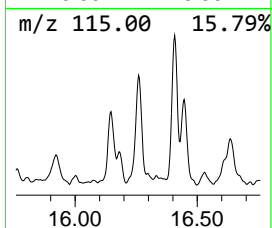
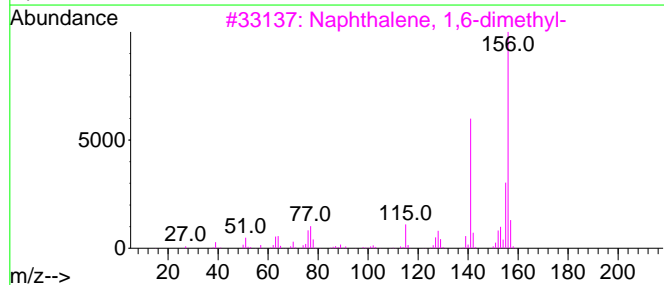
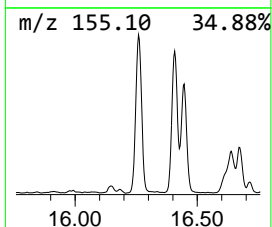
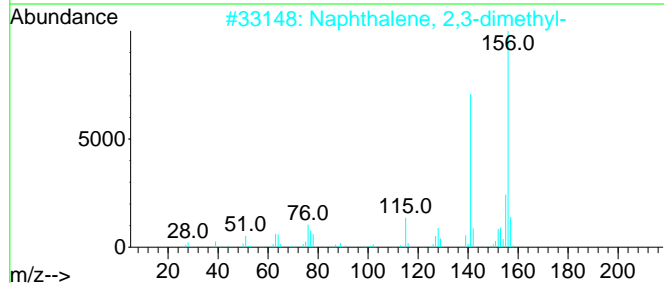
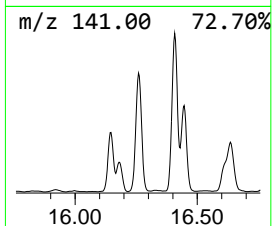
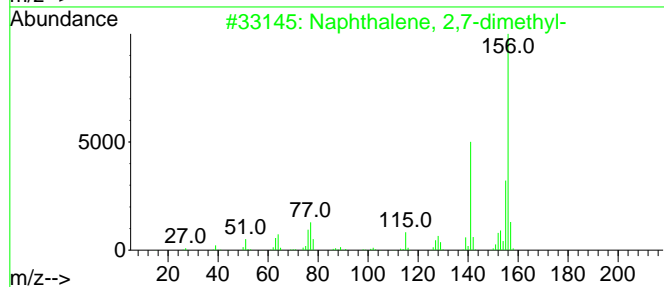
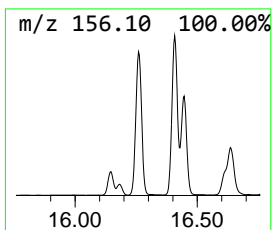
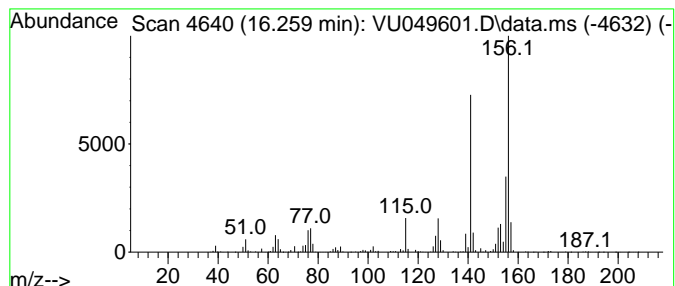
Quant Method : Z:\voasrv\HPCHEM1\MSVOA\_U\Method\82U062722W.M  
 Quant Title : SW846 8260

TIC Library : C:\Database\NIST20.L  
 TIC Integration Parameters: LSCINT.P

\*\*\*\*\*  
 Peak Number 8 Naphthalene, 2,7-dimethyl- Concentration Rank 4

R.T.	EstConc	Area	Relative to ISTD	R.T.
16.259	49.58 ug/l	1335900	1,4-Dichlorobenzene-d4	11.813

Hit#	of	5	Tentative ID	MW	MolForm	CAS#	Qual
1			Naphthalene, 2,7-dimethyl-	156	C12H12	000582-16-1	97
2			Naphthalene, 2,3-dimethyl-	156	C12H12	000581-40-8	97
3			Naphthalene, 1,6-dimethyl-	156	C12H12	000575-43-9	97
4			Naphthalene, 1,4-dimethyl-	156	C12H12	000571-58-4	97
5			Naphthalene, 1,3-dimethyl-	156	C12H12	000575-41-7	97



Data Path : Z:\voasrv\HPCHEM1\MSVOA\_U\Data\VU070122\  
 Data File : VU049601.D  
 Acq On : 01 Jul 2022 22:53  
 Operator : SY/MD  
 Sample : N3564-06 10X  
 Misc : 5.50g/5.0mL/100uL/5.0mL/MSVOA\_U/MEOH  
 ALS Vial : 25 Sample Multiplier: 1

Instrument :  
 MSVOA\_U  
 ClientSampleId :  
 WC-14B-11-2

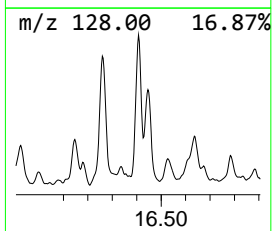
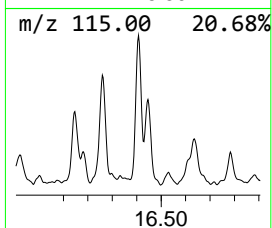
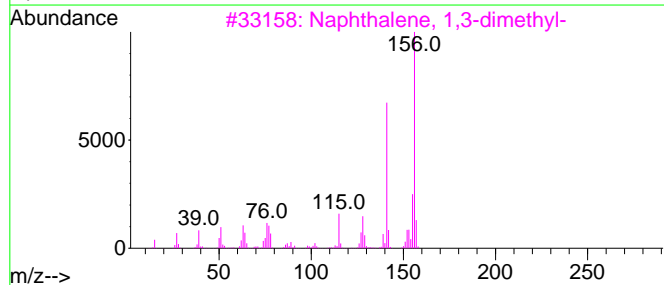
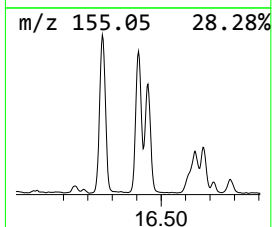
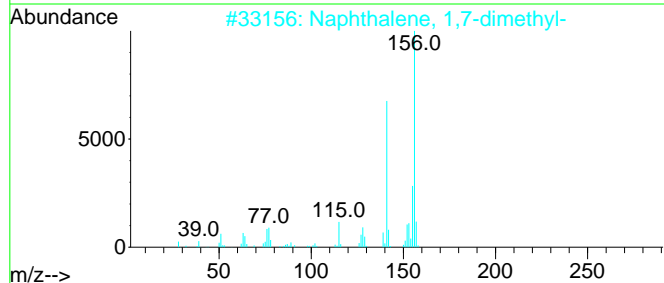
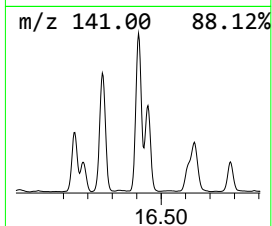
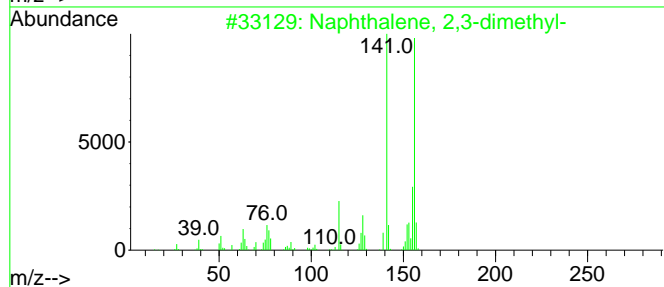
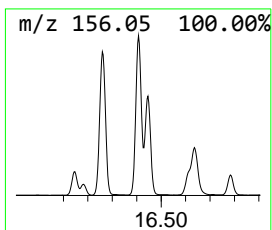
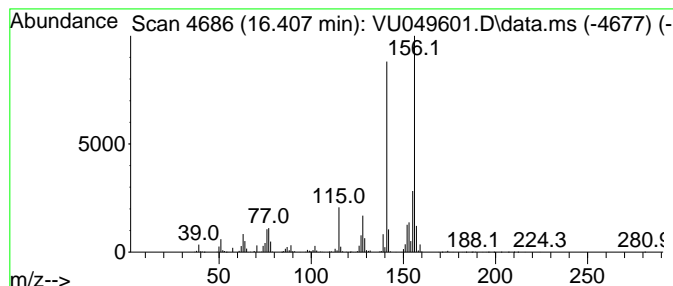
Quant Method : Z:\voasrv\HPCHEM1\MSVOA\_U\Method\82U062722W.M  
 Quant Title : SW846 8260

TIC Library : C:\Database\NIST20.L  
 TIC Integration Parameters: LSCINT.P

\*\*\*\*\*  
 Peak Number 9 Naphthalene, 2,3-dimethyl- Concentration Rank 1

R.T.	EstConc	Area	Relative to ISTD	R.T.
16.407	57.87 ug/l	1559450	1,4-Dichlorobenzene-d4	11.813

Hit#	of	5	Tentative ID	MW	MolForm	CAS#	Qual
1			Naphthalene, 2,3-dimethyl-	156	C12H12	000581-40-8	98
2			Naphthalene, 1,7-dimethyl-	156	C12H12	000575-37-1	97
3			Naphthalene, 1,3-dimethyl-	156	C12H12	000575-41-7	97
4			Naphthalene, 2,7-dimethyl-	156	C12H12	000582-16-1	97
5			Naphthalene, 1,6-dimethyl-	156	C12H12	000575-43-9	97



Data Path : Z:\voasrv\HPCHEM1\MSVOA\_U\Data\VU070122\  
 Data File : VU049601.D  
 Acq On : 01 Jul 2022 22:53  
 Operator : SY/MD  
 Sample : N3564-06 10X  
 Misc : 5.50g/5.0mL/100uL/5.0mL/MSVOA\_U/MEOH  
 ALS Vial : 25 Sample Multiplier: 1

Instrument :  
 MSVOA\_U  
 ClientSampleId :  
 WC-14B-11-2

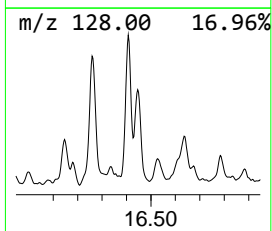
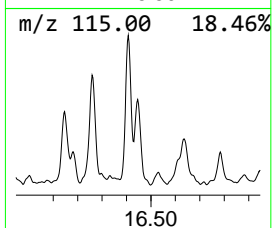
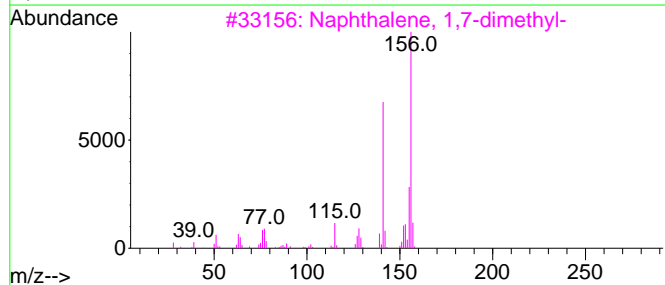
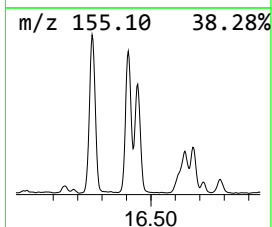
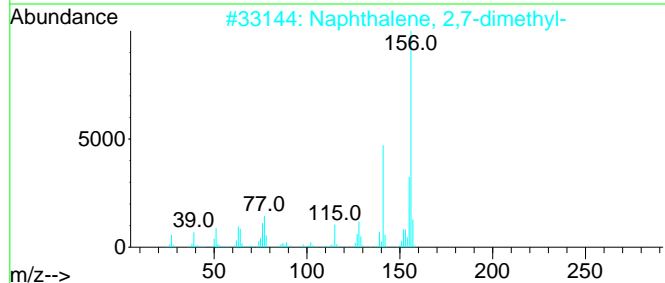
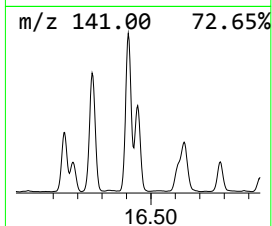
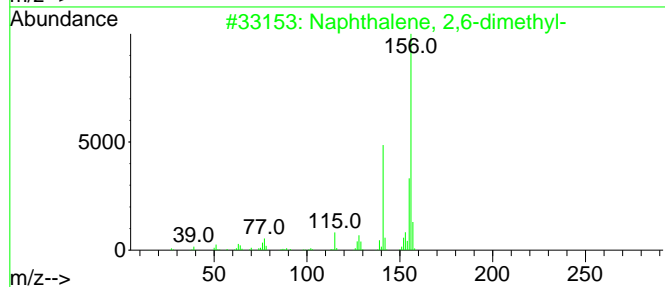
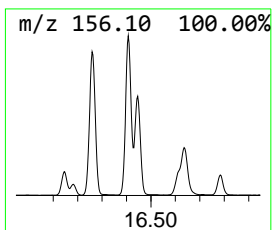
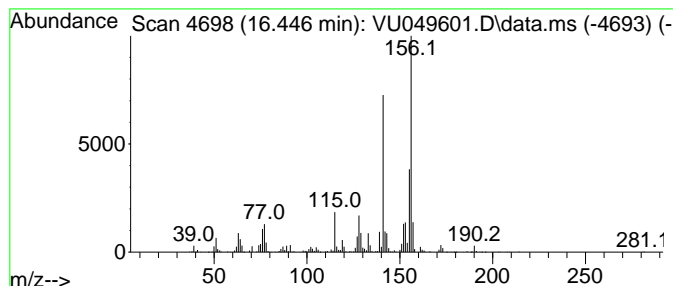
Quant Method : Z:\voasrv\HPCHEM1\MSVOA\_U\Method\82U062722W.M  
 Quant Title : SW846 8260

TIC Library : C:\Database\NIST20.L  
 TIC Integration Parameters: LSCINT.P

\*\*\*\*\*  
 Peak Number 10 Naphthalene, 2,6-dimethyl- Concentration Rank 5

R.T.	EstConc	Area	Relative to ISTD	R.T.
16.446	41.92 ug/l	1129710	1,4-Dichlorobenzene-d4	11.813

Hit#	of 5	Tentative ID	MW	MolForm	CAS#	Qual
1		Naphthalene, 2,6-dimethyl-	156	C12H12	000581-42-0	97
2		Naphthalene, 2,7-dimethyl-	156	C12H12	000582-16-1	97
3		Naphthalene, 1,7-dimethyl-	156	C12H12	000575-37-1	97
4		Naphthalene, 2,3-dimethyl-	156	C12H12	000581-40-8	96
5		Naphthalene, 1,3-dimethyl-	156	C12H12	000575-41-7	96



Data Path : Z:\voasrv\HPCHEM1\MSVOA\_U\Data\VU070122\  
Data File : VU049601.D  
Acq On : 01 Jul 2022 22:53  
Operator : SY/MD  
Sample : N3564-06 10X  
Misc : 5.50g/5.0mL/100uL/5.0mL/MSVOA\_U/MEOH  
ALS Vial : 25 Sample Multiplier: 1

Instrument :  
MSVOA\_U  
ClientSampleId :  
WC-14B-11-2

Quant Method : Z:\voasrv\HPCHEM1\MSVOA\_U\Method\82U062722W.M  
Quant Title : SW846 8260

TIC Library : C:\Database\NIST20.L  
TIC Integration Parameters: LSCINT.P

TIC Top Hit name	RT	EstConc	Units	Response	--Internal Standard--			
					#	RT	Resp	Conc
Cyclohexane, 1,...	8.240	22.3	ug/l	543121	3	9.417	1217780	50.0
Cyclohexane, 1,...	8.922	24.3	ug/l	592846	3	9.417	1217780	50.0
1-Ethyl-4-methy...	10.028	27.6	ug/l	671570	3	9.417	1217780	50.0
Octane, 2,6-dim...	10.250	49.7	ug/l	1210860	3	9.417	1217780	50.0
Cyclohexane, (1...	10.356	27.6	ug/l	672689	3	9.417	1217780	50.0
o-Cymene	13.449	53.7	ug/l	1446040	4	11.813	1347300	50.0
1H-Indene, 2,3-...	14.668	25.9	ug/l	697771	4	11.813	1347300	50.0
Naphthalene, 2,...	16.259	49.6	ug/l	1335900	4	11.813	1347300	50.0
Naphthalene, 2,...	16.407	57.9	ug/l	1559450	4	11.813	1347300	50.0
Naphthalene, 2,...	16.446	41.9	ug/l	1129710	4	11.813	1347300	50.0