

Data Path : Z:\voasrv\HPCHEM1\MSVOA_U\Data\VU070124\
 Data File : VU059716.D
 Acq On : 02 Jul 2024 04:04
 Operator : MD/SY
 Sample : P3121-18
 Misc : 25.0mL/MSVOA_U/WATER
 ALS Vial : 49 Sample Multiplier: 1

Instrument :
 MSVOA_U
 ClientSampleId :

Quant Time: Jul 02 07:22:32 2024
 Quant Method : Z:\voasrv\HPCHEM1\MSVOA_U\Method\SFAMUTR061724WMA.M
 Quant Title : TRACE VOA SFAM1.0
 QLast Update : Sat Jun 29 01:51:23 2024
 Response via : Initial Calibration

Compound	R.T.	QIon	Response	Conc	Units	Dev(Min)
Internal Standards						
1) 1,4-Difluorobenzene	6.242	114	210710	5.000	ug/L	0.00
28) Chlorobenzene-d5	9.412	117	209691	5.000	ug/L	0.00
58) 1,4-Dichlorobenzene-d4	11.804	152	115271	5.000	ug/L	0.00
System Monitoring Compounds						
4) Vinyl Chloride-d3	1.595	65	38092	2.600	ug/L	0.00
Spiked Amount	5.000	Range 40 - 130	Recovery	=	52.000%	
7) Chloroethane-d5	1.907	69	42985	3.049	ug/L	0.00
Spiked Amount	5.000	Range 65 - 130	Recovery	=	61.000%#	
11) 1,1-Dichloroethene-d2	2.560	65	18699	3.076	ug/L	0.00
Spiked Amount	5.000	Range 60 - 125	Recovery	=	61.600%	
20) 2-Butanone-d5	4.618	46	151404	50.166	ug/L	0.00
Spiked Amount	50.000	Range 40 - 130	Recovery	=	100.340%	
24) Chloroform-d	5.055	84	112565	3.743	ug/L	0.00
Spiked Amount	5.000	Range 70 - 125	Recovery	=	74.800%	
26) 1,2-Dichloroethane-d4	5.695	65	56830	3.923	ug/L	0.00
Spiked Amount	5.000	Range 70 - 130	Recovery	=	78.400%	
32) Benzene-d6	5.721	84	223575	3.874	ug/L	0.00
Spiked Amount	5.000	Range 70 - 125	Recovery	=	77.400%	
36) 1,2-Dichloropropane-d6	6.682	67	72765	4.115	ug/L	0.00
Spiked Amount	5.000	Range 60 - 140	Recovery	=	82.200%	
41) Toluene-d8	7.891	98	191603	3.571	ug/L	0.00
Spiked Amount	5.000	Range 70 - 130	Recovery	=	71.400%	
43) trans-1,3-Dichloroprop...	8.174	79	21691	3.917	ug/L	0.00
Spiked Amount	5.000	Range 55 - 130	Recovery	=	78.400%	
46) 2-Hexanone-d5	8.624	63	126663	55.052	ug/L	0.00
Spiked Amount	50.000	Range 45 - 130	Recovery	=	110.100%	
56) 1,1,2,2-Tetrachloroeth...	10.749	84	64428	4.410	ug/L	0.00
Spiked Amount	5.000	Range 65 - 120	Recovery	=	88.200%	
66) 1,2-Dichlorobenzene-d4	12.187	152	90413	4.407	ug/L	0.00
Spiked Amount	5.000	Range 80 - 120	Recovery	=	88.200%	
Target Compounds						
14) Carbon disulfide	2.788	76	4983	0.100	ug/L #	92
22) cis-1,2-Dichloroethene	4.666	96	3745	0.219	ug/L	97
30) Cyclohexane	5.380	56	17274	0.808	ug/L	94
33) Benzene	5.769	78	23878	0.375	ug/L	100
35) Methylcyclohexane	6.753	83	8381	0.342	ug/L	90
37) 1,2-Dichloropropane	6.682	63	7296	0.443	ug/L #	93
42) Toluene	7.968	91	22791	0.338	ug/L	95
52) Ethylbenzene	9.563	91	152034	2.198	ug/L	95
53) m,p-Xylene	9.688	106	30405	1.145	ug/L	100
54) o-Xylene	10.093	106	47562	1.887	ug/L	99
55) Styrene	10.113	104	10985	0.256	ug/L	79
60) Isopropylbenzene	10.479	105	63047	0.885	ug/L	97
62) 1,3,5-Trimethylbenzene	11.081	105	178580	3.166	ug/L	99
63) 1,2,4-Trimethylbenzene	11.460	105	518695	9.617	ug/L	98
68) 1,2-Dibromo-3-chloropr...	12.965	75	1265	0.609	ug/L #	6
71) Naphthalene	14.077	128	1321681	44.901	ug/L	98

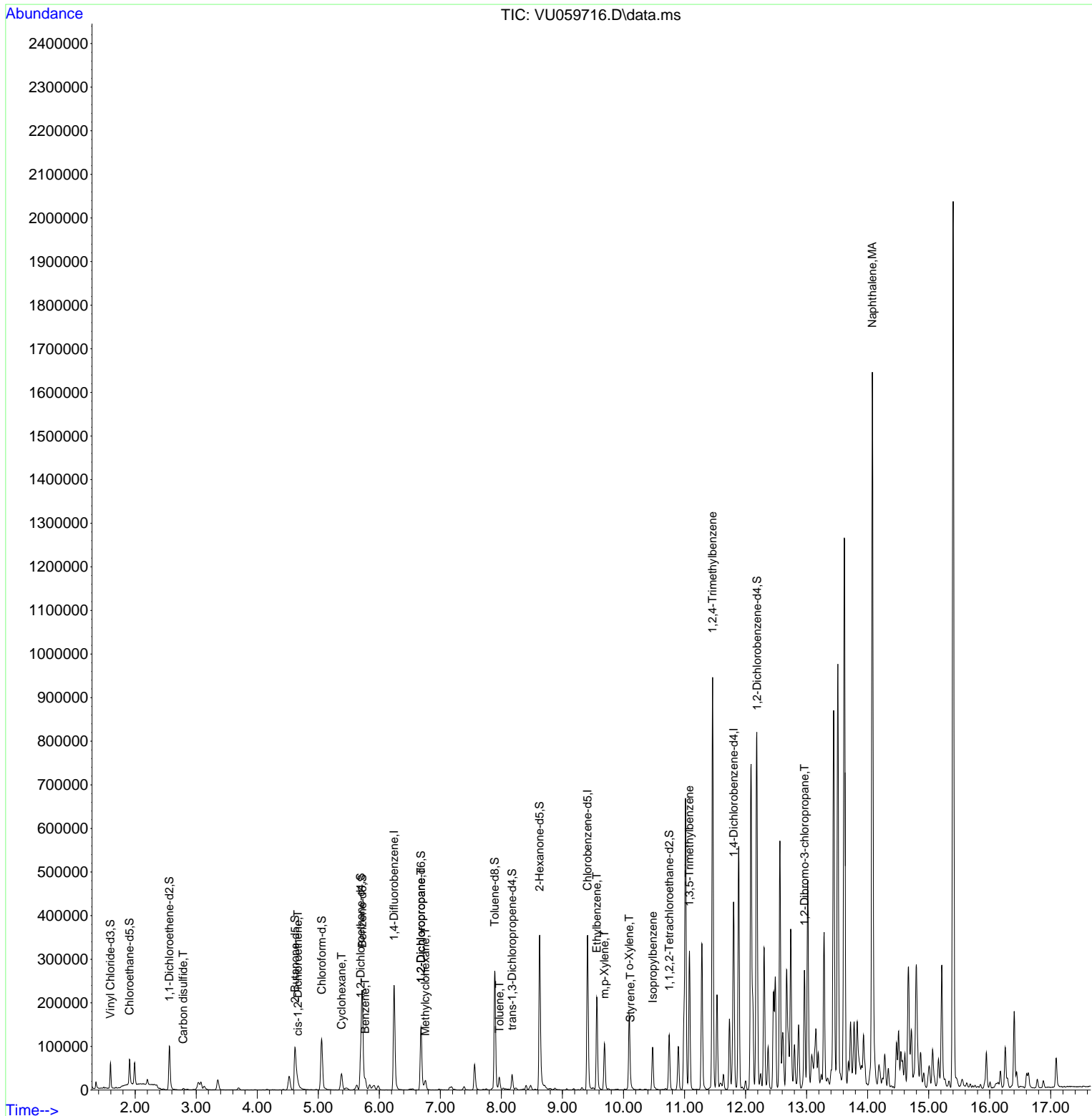
(#) = qualifier out of range (m) = manual integration (+) = signals summed

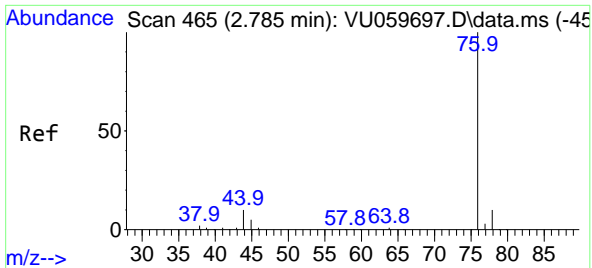
Instrument :
MSVOA_U
ClientSampleId :

Data Path : Z:\voasrv\HPCHEM1\MSVOA_U\Data\VU070124\
 Data File : VU059716.D
 Acq On : 02 Jul 2024 04:04
 Operator : MD/SY
 Sample : P3121-18
 Misc : 25.0mL/MSVOA_U/WATER
 ALS Vial : 49 Sample Multiplier: 1

Instrument :
 MSVOA_U
 ClientSampleId :

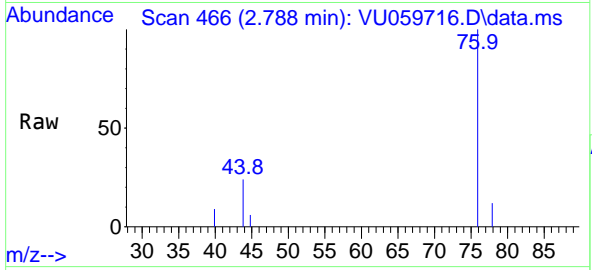
Quant Time: Jul 02 07:22:32 2024
 Quant Method : Z:\voasrv\HPCHEM1\MSVOA_U\Method\SFAMUTR061724WMA.M
 Quant Title : TRACE VOA SFAM1.0
 QLast Update : Sat Jun 29 01:51:23 2024
 Response via : Initial Calibration



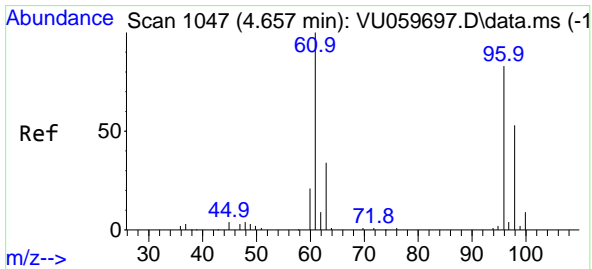
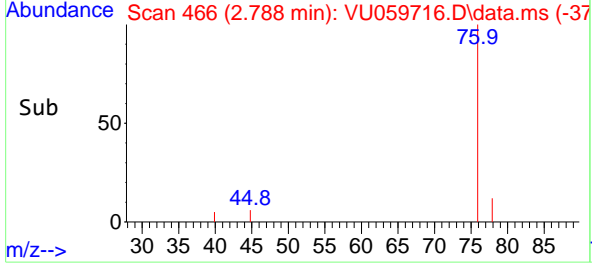
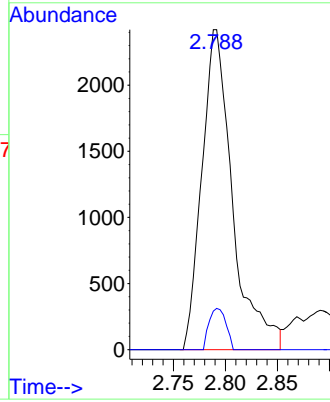


#14
 Carbon disulfide
 Concen: 0.100 ug/L
 RT: 2.788 min Scan# 4
 Delta R.T. 0.003 min
 Lab File: VU059716.D
 Acq: 02 Jul 2024 04:04

Instrument :
 MSVOA_U
 ClientSampleId :

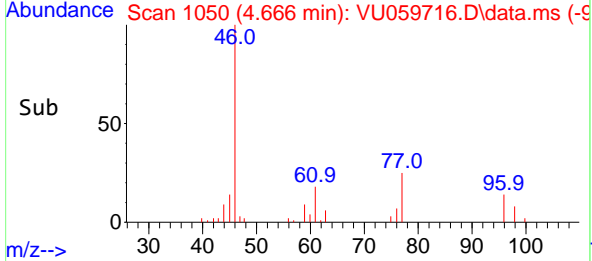
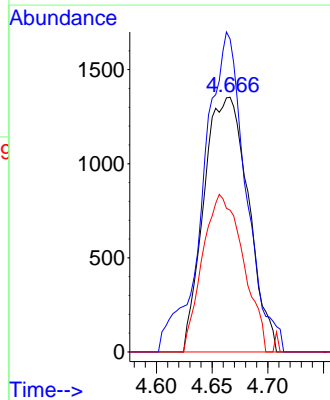
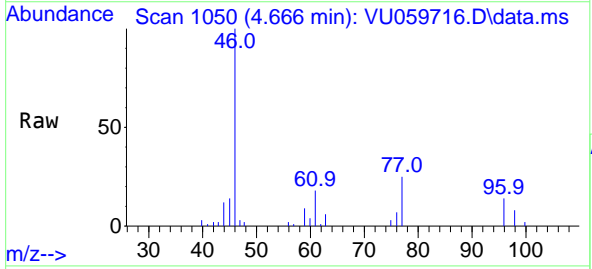


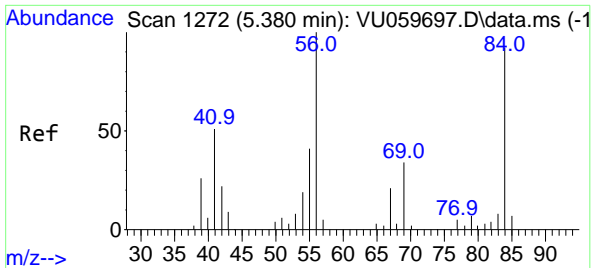
Tgt Ion: 76 Resp: 4983
 Ion Ratio Lower Upper
 76 100
 78 12.0 7.3 10.9#



#22
 cis-1,2-Dichloroethene
 Concen: 0.219 ug/L
 RT: 4.666 min Scan# 1050
 Delta R.T. 0.006 min
 Lab File: VU059716.D
 Acq: 02 Jul 2024 04:04

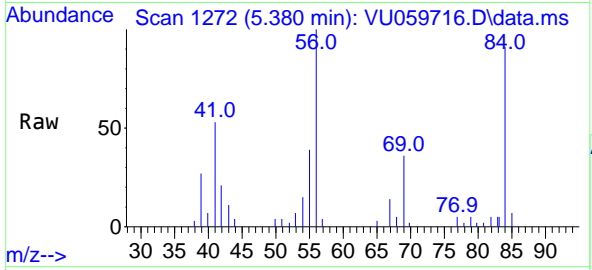
Tgt Ion: 96 Resp: 3745
 Ion Ratio Lower Upper
 96 100
 61 122.8 87.4 162.2
 98 55.7 42.3 78.5





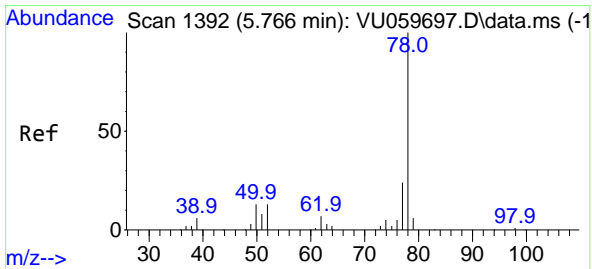
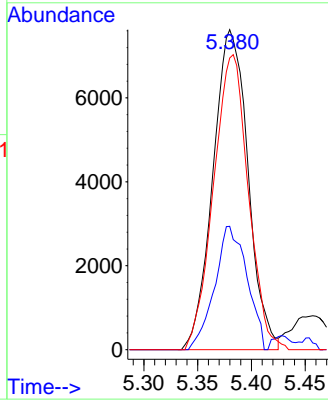
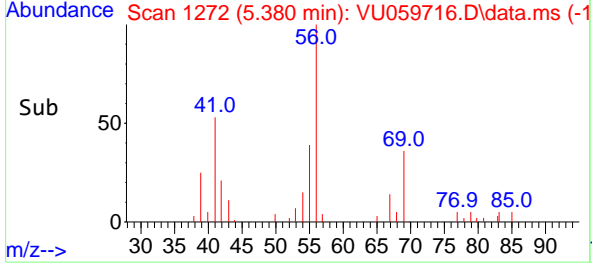
#30
 Cyclohexane
 Concen: 0.808 ug/L
 RT: 5.380 min Scan# 11
 Delta R.T. 0.000 min
 Lab File: VU059716.D
 Acq: 02 Jul 2024 04:04

Instrument :
 MSVOA_U
 ClientSampleId :



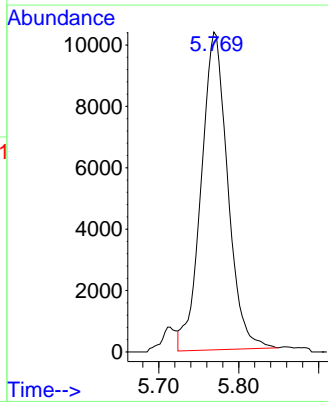
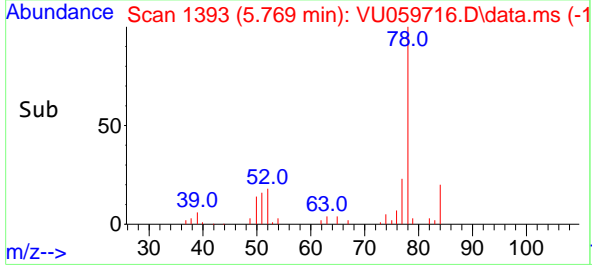
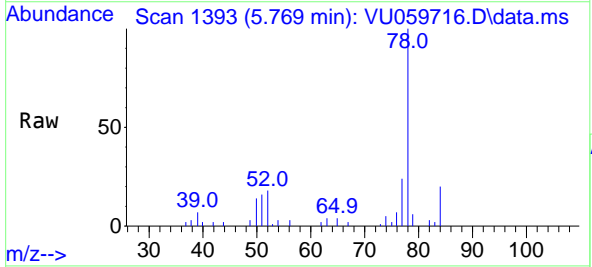
Tgt Ion: 56 Resp: 17274

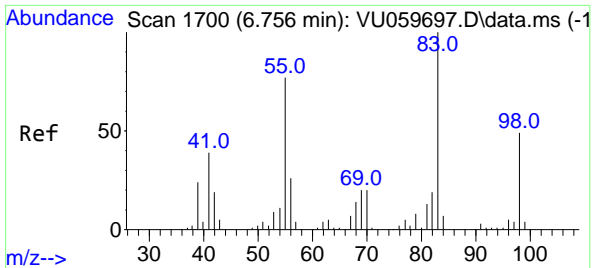
Ion	Ratio	Lower	Upper
56	100		
69	35.6	24.8	37.2
84	91.6	69.8	104.8



#33
 Benzene
 Concen: 0.375 ug/L
 RT: 5.769 min Scan# 1393
 Delta R.T. 0.003 min
 Lab File: VU059716.D
 Acq: 02 Jul 2024 04:04

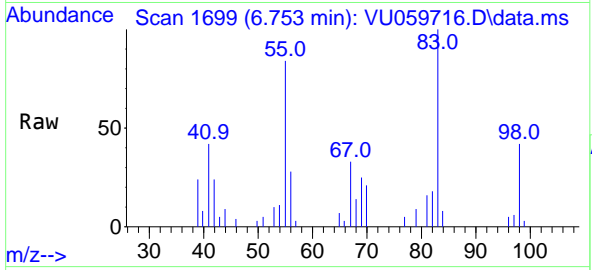
Tgt Ion: 78 Resp: 23878





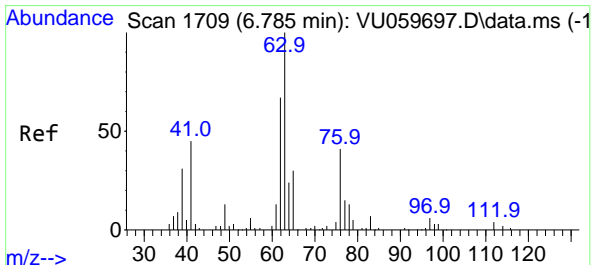
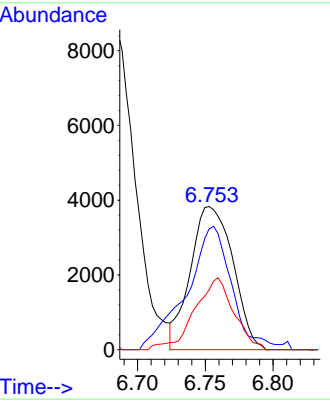
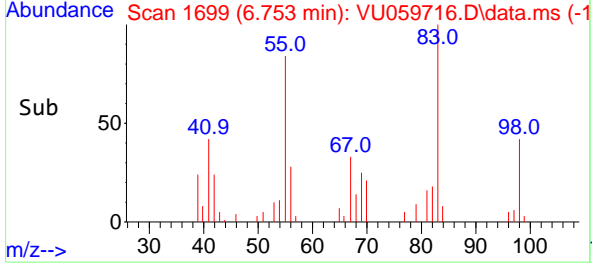
#35
 Methylcyclohexane
 Concen: 0.342 ug/L
 RT: 6.753 min Scan# 1699
 Delta R.T. -0.003 min
 Lab File: VU059716.D
 Acq: 02 Jul 2024 04:04

Instrument : MSVOA_U
 ClientSampleId :

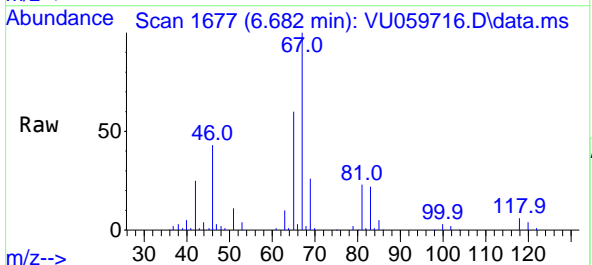


Tgt Ion: 83 Resp: 8381

Ion	Ratio	Lower	Upper
83	100		
55	91.3	62.7	94.1
98	46.0	35.4	53.0

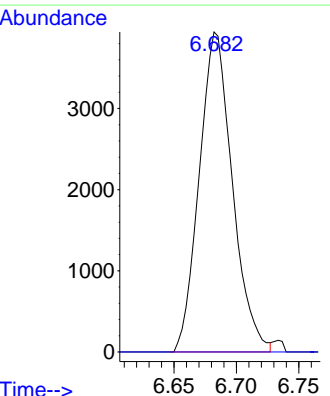
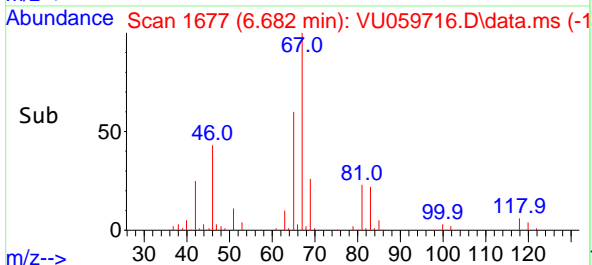


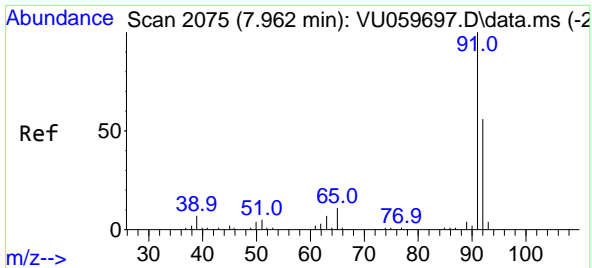
#37
 1,2-Dichloropropane
 Concen: 0.443 ug/L
 RT: 6.682 min Scan# 1677
 Delta R.T. -0.103 min
 Lab File: VU059716.D
 Acq: 02 Jul 2024 04:04



Tgt Ion: 63 Resp: 7296

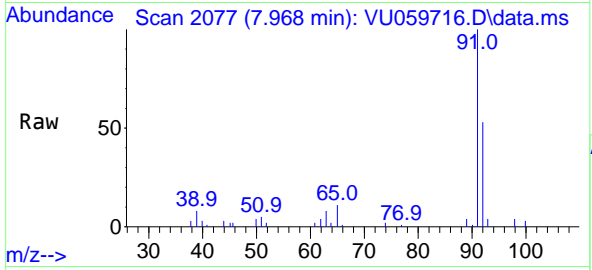
Ion	Ratio	Lower	Upper
63	100		
112	0.9	2.6	3.8



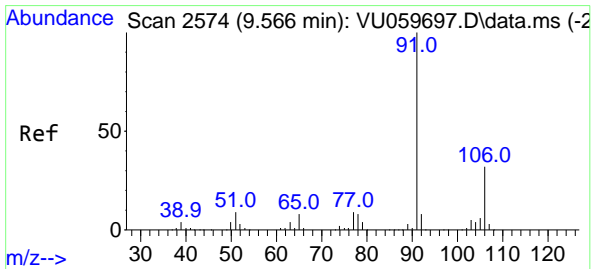
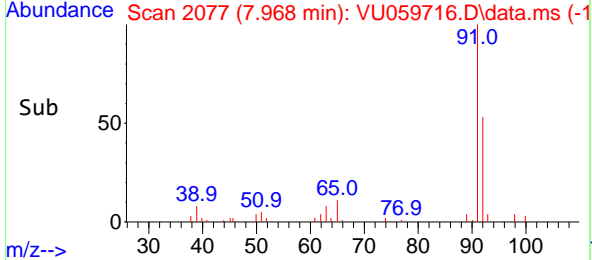
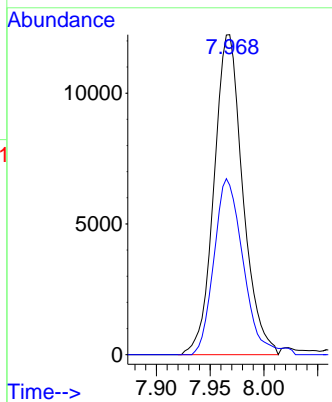


#42
 Toluene
 Concen: 0.338 ug/L
 RT: 7.968 min Scan# 2077
 Delta R.T. 0.006 min
 Lab File: VU059716.D
 Acq: 02 Jul 2024 04:04

Instrument : MSVOA_U
 ClientSampleId :

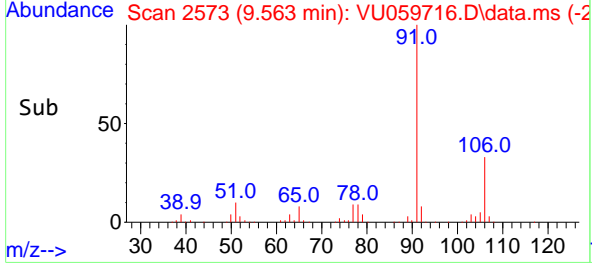
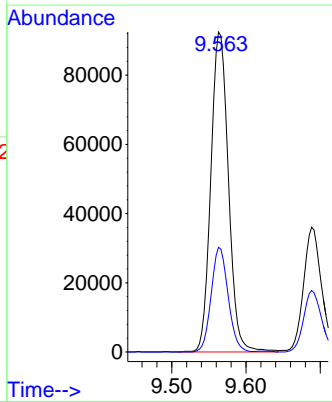
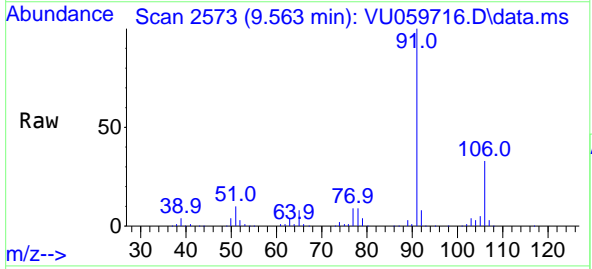


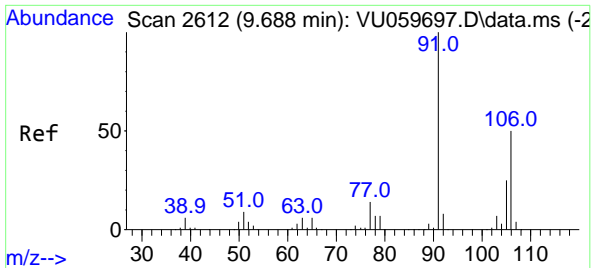
Tgt Ion: 91 Resp: 22791
 Ion Ratio Lower Upper
 91 100
 92 53.0 39.7 73.7



#52
 Ethylbenzene
 Concen: 2.198 ug/L
 RT: 9.563 min Scan# 2573
 Delta R.T. 0.000 min
 Lab File: VU059716.D
 Acq: 02 Jul 2024 04:04

Tgt Ion: 91 Resp: 152034
 Ion Ratio Lower Upper
 91 100
 106 32.7 20.9 38.7

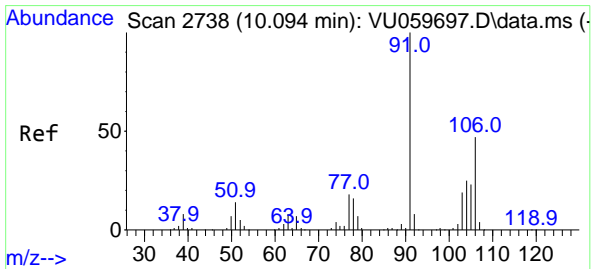
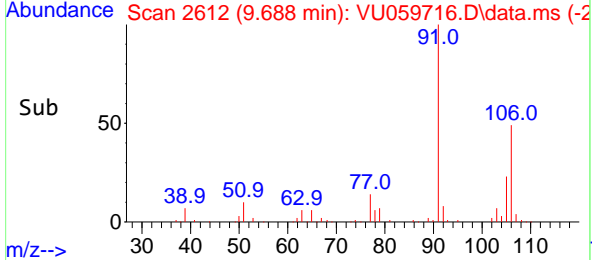
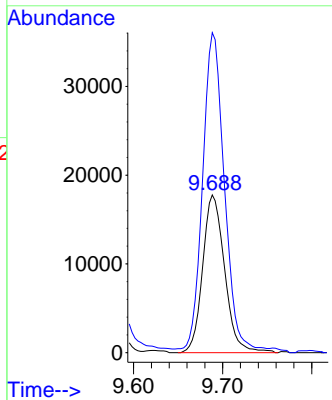
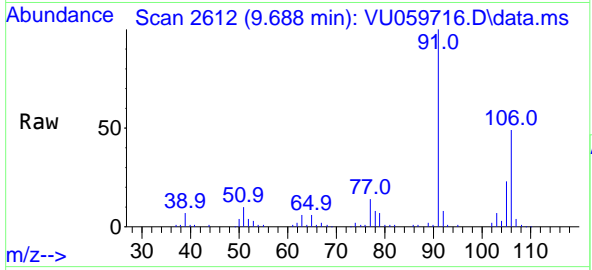




#53
 m,p-Xylene
 Concen: 1.145 ug/L
 RT: 9.688 min Scan# 20
 Delta R.T. 0.000 min
 Lab File: VU059716.D
 Acq: 02 Jul 2024 04:04

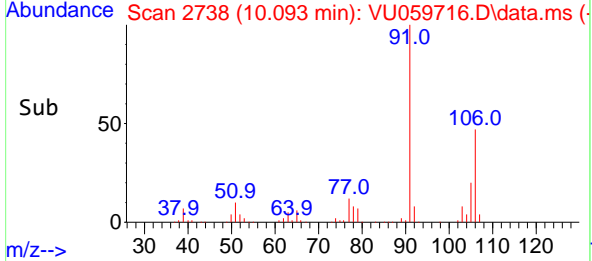
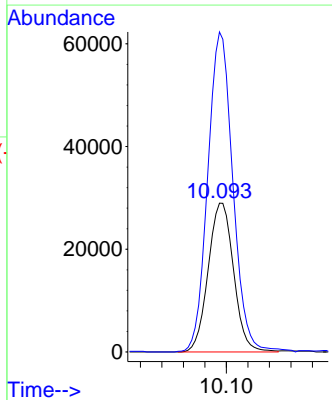
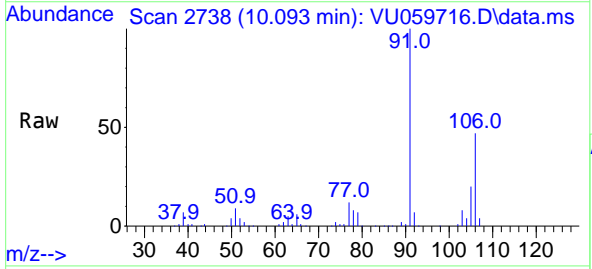
Instrument : MSVOA_U
 ClientSampleId :

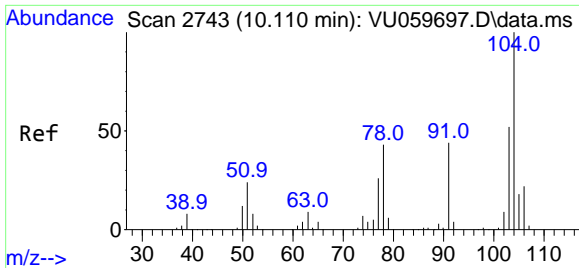
Tgt Ion:106 Resp: 30405
 Ion Ratio Lower Upper
 106 100
 91 202.9 142.0 263.8



#54
 o-Xylene
 Concen: 1.887 ug/L
 RT: 10.093 min Scan# 2738
 Delta R.T. 0.000 min
 Lab File: VU059716.D
 Acq: 02 Jul 2024 04:04

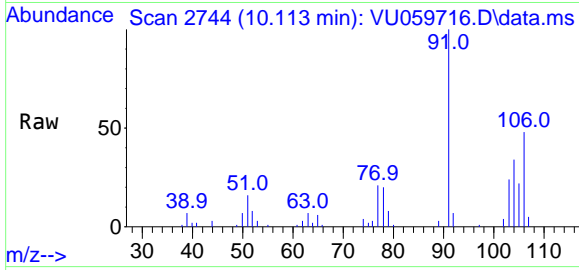
Tgt Ion:106 Resp: 47562
 Ion Ratio Lower Upper
 106 100
 91 215.0 151.6 281.6



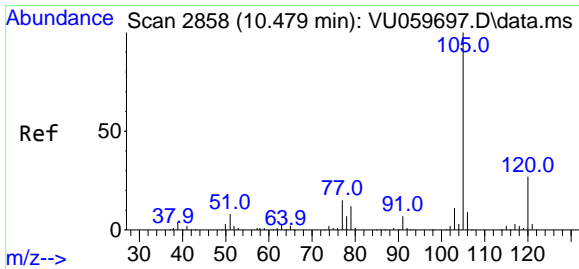
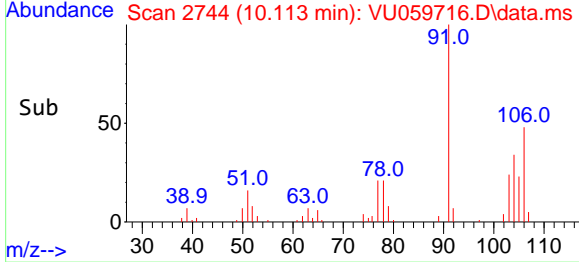
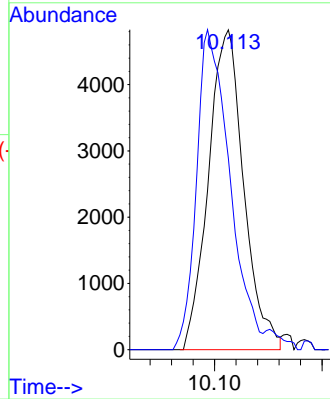


#55
 Styrene
 Concen: 0.256 ug/L
 RT: 10.113 min Scan# 21
 Delta R.T. 0.003 min
 Lab File: VU059716.D
 Acq: 02 Jul 2024 04:04

Instrument :
 MSVOA_U
 ClientSampleId :

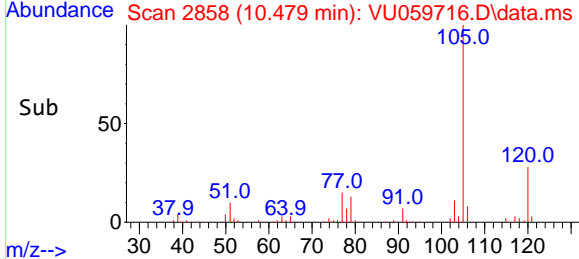
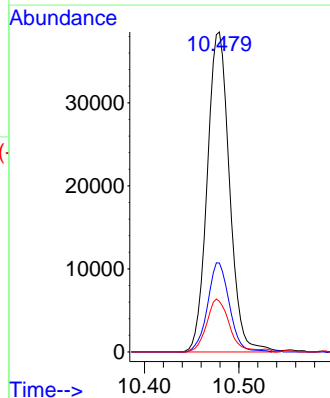
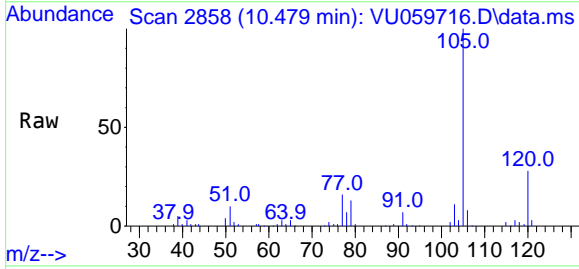


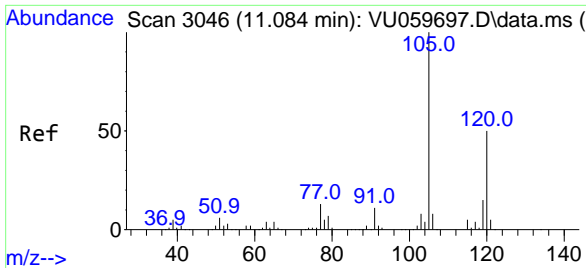
Tgt Ion:104 Resp: 10985
 Ion Ratio Lower Upper
 104 100
 78 59.9 32.3 60.1



#60
 Isopropylbenzene
 Concen: 0.885 ug/L
 RT: 10.479 min Scan# 2858
 Delta R.T. 0.000 min
 Lab File: VU059716.D
 Acq: 02 Jul 2024 04:04

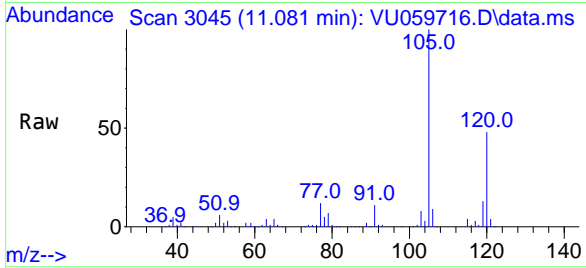
Tgt Ion:105 Resp: 63047
 Ion Ratio Lower Upper
 105 100
 120 27.3 20.6 31.0
 77 16.8 12.8 19.2



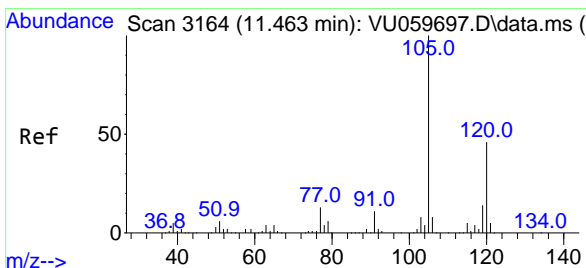
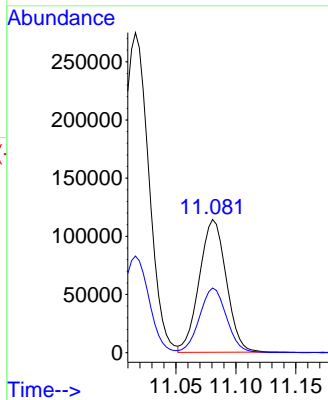
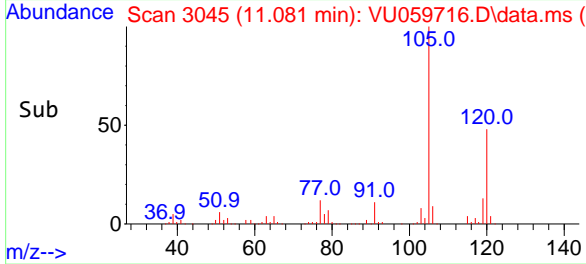


#62
 1,3,5-Trimethylbenzene
 Concen: 3.166 ug/L
 RT: 11.081 min Scan# 3046
 Delta R.T. -0.003 min
 Lab File: VU059716.D
 Acq: 02 Jul 2024 04:04

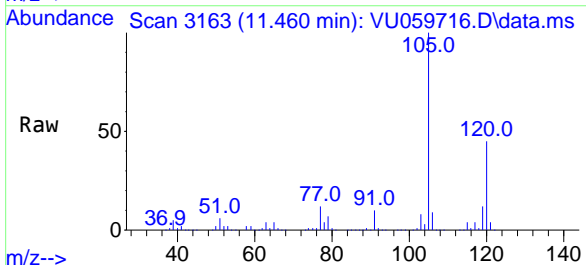
Instrument : MSVOA_U
 ClientSampleId :



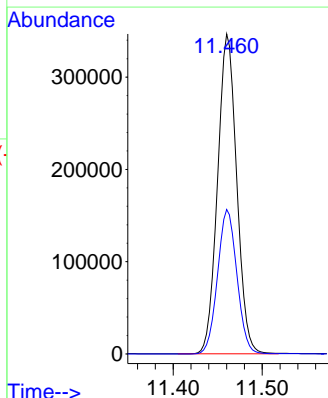
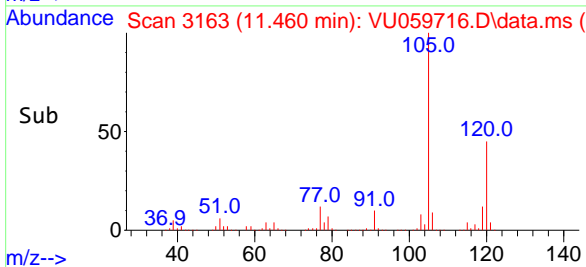
Tgt Ion:105 Resp: 178580
 Ion Ratio Lower Upper
 105 100
 120 48.5 38.2 57.4

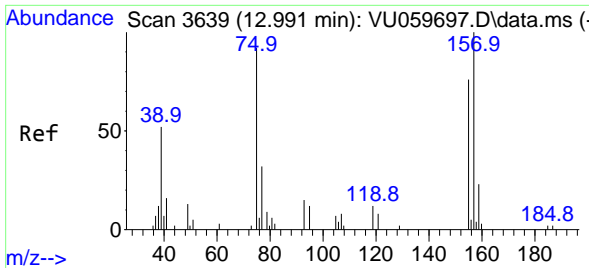


#63
 1,2,4-Trimethylbenzene
 Concen: 9.617 ug/L
 RT: 11.460 min Scan# 3163
 Delta R.T. -0.003 min
 Lab File: VU059716.D
 Acq: 02 Jul 2024 04:04



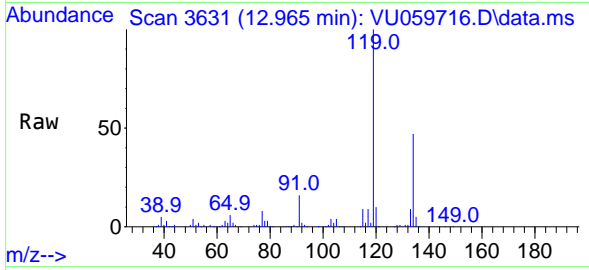
Tgt Ion:105 Resp: 518695
 Ion Ratio Lower Upper
 105 100
 120 45.7 35.4 53.0



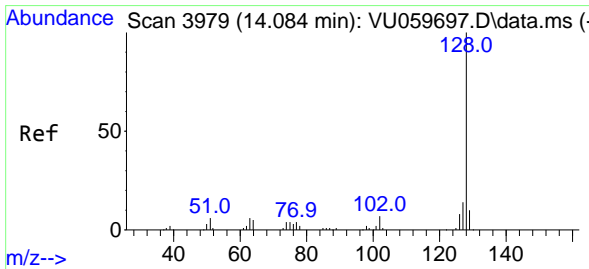
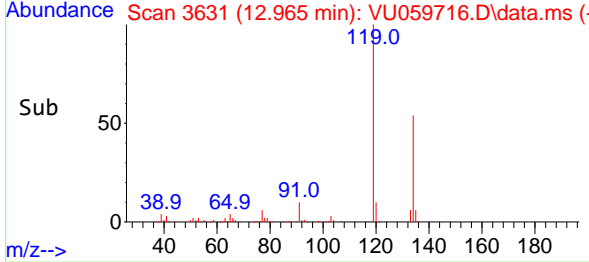
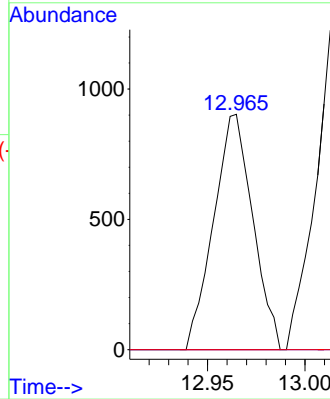


#68
 1,2-Dibromo-3-chloropropane
 Concen: 0.609 ug/L
 RT: 12.965 min Scan# 30
 Delta R.T. -0.026 min
 Lab File: VU059716.D
 Acq: 02 Jul 2024 04:04

Instrument :
 MSVOA_U
 ClientSampleId :



Tgt Ion: 75 Resp: 1265
 Ion Ratio Lower Upper
 75 100
 155 0.0 58.2 87.2#
 157 0.0 80.0 120.0#



#71
 Naphthalene
 Concen: 44.901 ug/L
 RT: 14.077 min Scan# 3977
 Delta R.T. -0.006 min
 Lab File: VU059716.D
 Acq: 02 Jul 2024 04:04

Tgt Ion:128 Resp: 1321681
 Ion Ratio Lower Upper
 128 100
 129 11.4 8.2 12.4
 127 13.1 10.2 15.4

