

Data Path : Z:\voasrv\HPCHEM1\MSVOA_U\Data\VU070124\
 Data File : VU059710.D
 Acq On : 02 Jul 2024 01:40
 Operator : MD/SY
 Sample : P3121-12
 Misc : 25.0mL/MSVOA_U/WATER
 ALS Vial : 43 Sample Multiplier: 1

Instrument :
 MSVOA_U
 ClientSampleId :
 COBJ8

Integration Parameters: rteint.p

Integrator: RTE
 Smoothing : ON Filtering: 5
 Sampling : 1 Min Area: 3 % of largest Peak
 Start Thrs: 0.1 Max Peaks: 100
 Stop Thrs : 0 Peak Location: TOP

If leading or trailing edge < 100 prefer < Baseline drop else tangent >
 Peak separation: 5

Method : Z:\voasrv\HPCHEM1\MSVOA_U\Method\SFAMUTR061724WMA.M
 Title : TRACE VOA SFAM1.0

Signal : TIC: VU059710.D\data.ms

peak #	R.T. min	first scan	max scan	last scan	PK TY	peak height	corr. area	corr. % max.	% of total
1	1.782	144	153	179	rBV	576008	890261	1.14%	0.630%
2	3.348	625	640	673	rVB2	542503	1192707	1.52%	0.845%
3	4.522	987	1005	1025	rBV	819788	1991500	2.54%	1.410%
4	4.657	1027	1047	1107	rBV2	35168106	78313988	100.00%	55.461%
5	5.377	1255	1271	1287	rBV	850093	2031190	2.59%	1.438%
6	6.753	1686	1699	1724	rVB	424006	920867	1.18%	0.652%
7	9.563	2562	2573	2590	rVB	1048843	1640247	2.09%	1.162%
8	9.685	2601	2611	2640	rVB	3937084	6472281	8.26%	4.584%
9	10.898	2977	2988	3002	rVB	921416	1407601	1.80%	0.997%
10	10.991	3003	3017	3035	rVV	4357597	9644618	12.32%	6.830%
11	11.081	3035	3045	3062	rVB	2683229	4010689	5.12%	2.840%
12	11.283	3092	3108	3124	rBV	1971822	3183404	4.06%	2.254%
13	11.460	3149	3163	3181	rBV	10902121	16341745	20.87%	11.573%
14	11.888	3284	3296	3312	rBV	1685436	2550811	3.26%	1.806%
15	12.087	3343	3358	3364	rBV3	669534	1130463	1.44%	0.801%
16	12.184	3377	3388	3405	rVB3	1135751	1998068	2.55%	1.415%
17	12.457	3460	3473	3478	rBV	515854	813424	1.04%	0.576%
18	12.563	3495	3506	3514	rBV	806656	1223606	1.56%	0.867%
19	12.672	3529	3540	3559	rBV	900677	1520439	1.94%	1.077%
20	13.020	3639	3648	3662	rVB	694185	1077794	1.38%	0.763%
21	13.286	3721	3731	3743	rVB	612100	910628	1.16%	0.645%
22	13.447	3771	3781	3794	rVB2	1209093	1940074	2.48%	1.374%

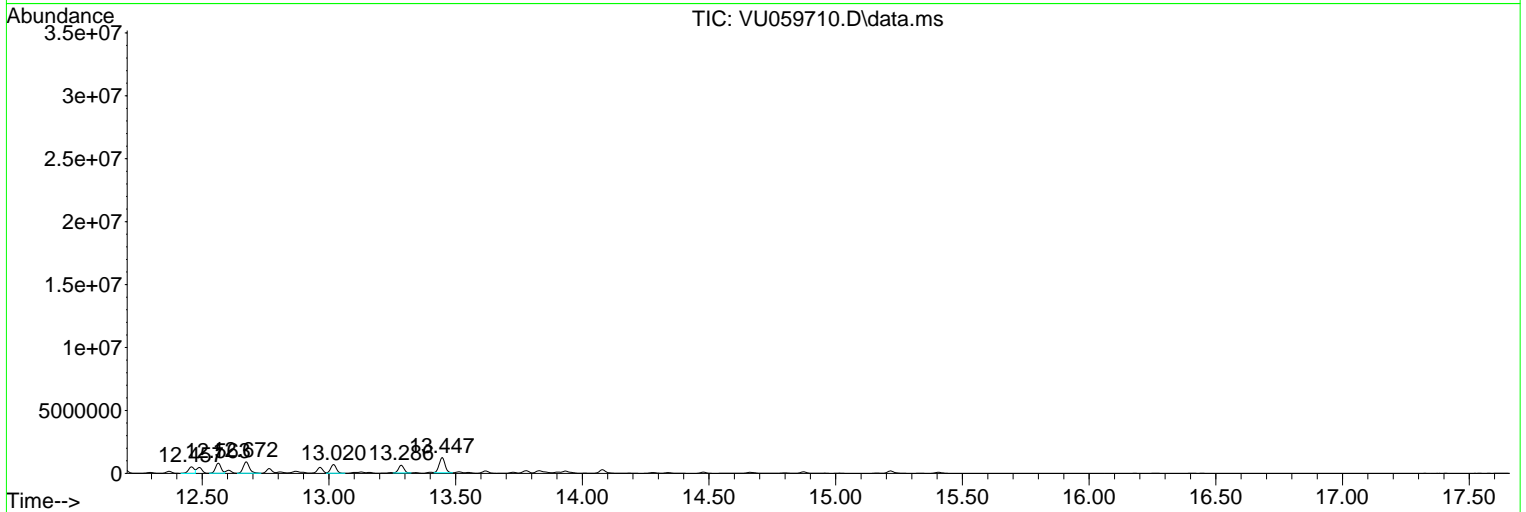
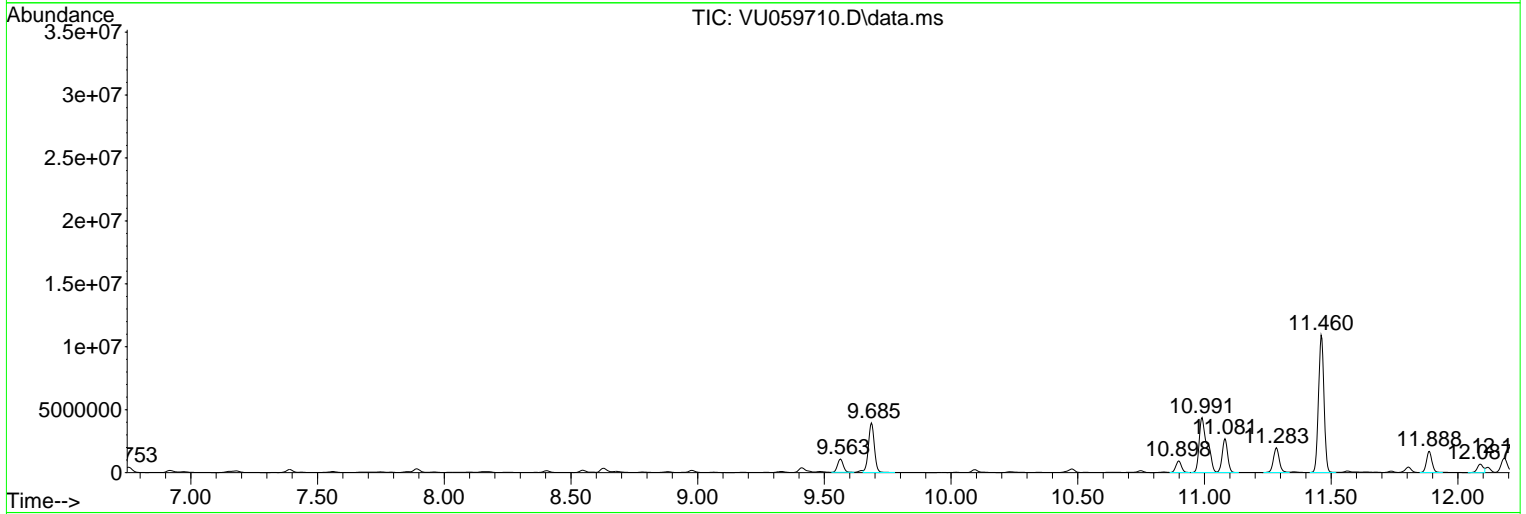
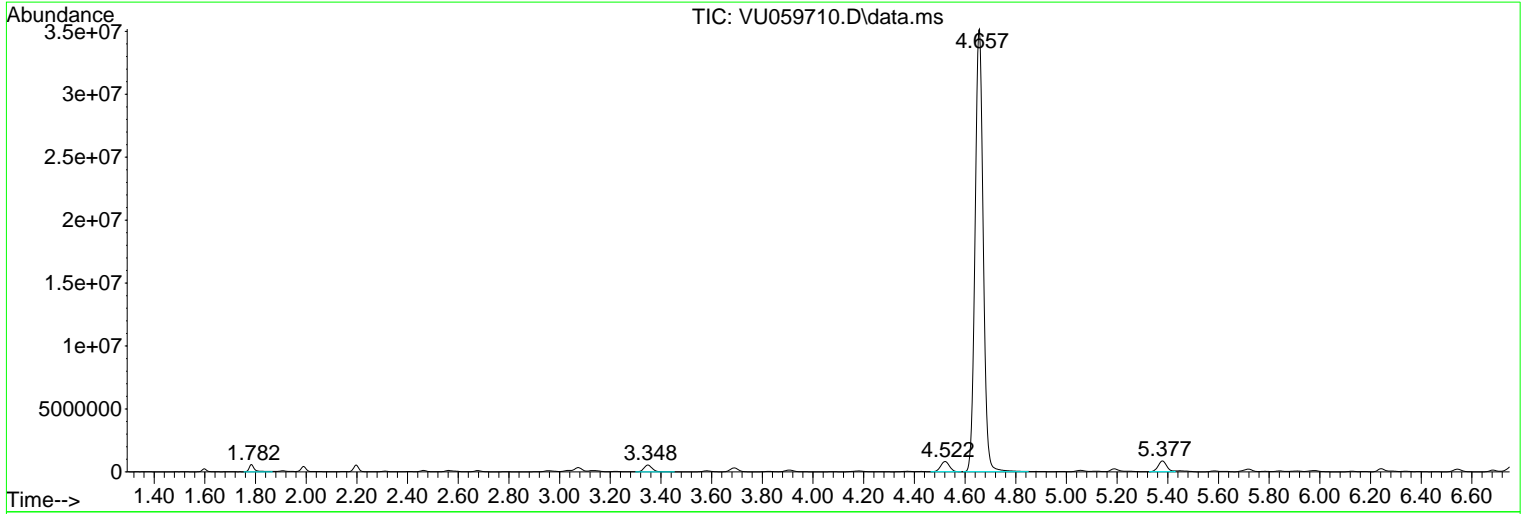
Sum of corrected areas: 141206405

Data Path : Z:\voasrv\HPCHEM1\MSVOA_U\Data\VU070124\
 Data File : VU059710.D
 Acq On : 02 Jul 2024 01:40
 Operator : MD/SY
 Sample : P3121-12
 Misc : 25.0mL/MSVOA_U/WATER
 ALS Vial : 43 Sample Multiplier: 1

Instrument :
 MSVOA_U
 ClientSampleId :
 COBJ8

Quant Method : Z:\voasrv\HPCHEM1\MSVOA_U\Method\SFAMUTR061724WMA.M
 Quant Title : TRACE VOA SFAM1.0

TIC Library : C:\Database\NIST20.L
 TIC Integration Parameters: LSCINT.P



Data Path : Z:\voasrv\HPCHEM1\MSVOA_U\Data\VU070124\
 Data File : VU059710.D
 Acq On : 02 Jul 2024 01:40
 Operator : MD/SY
 Sample : P3121-12
 Misc : 25.0mL/MSVOA_U/WATER
 ALS Vial : 43 Sample Multiplier: 1

Instrument :
 MSVOA_U
 ClientSampleId :
 COBJ8

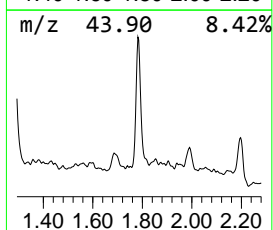
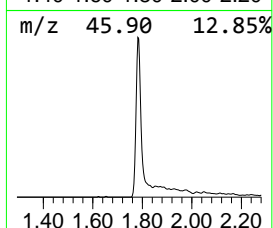
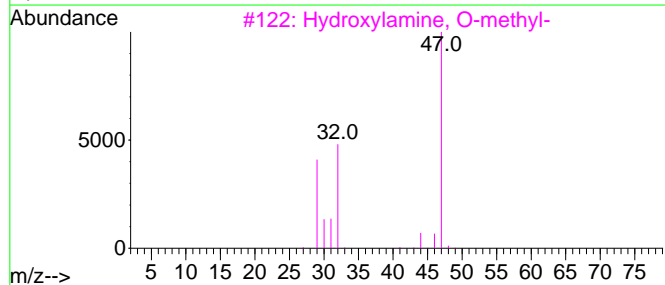
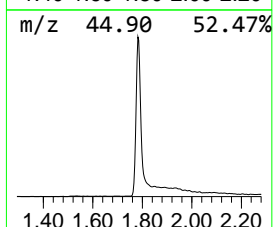
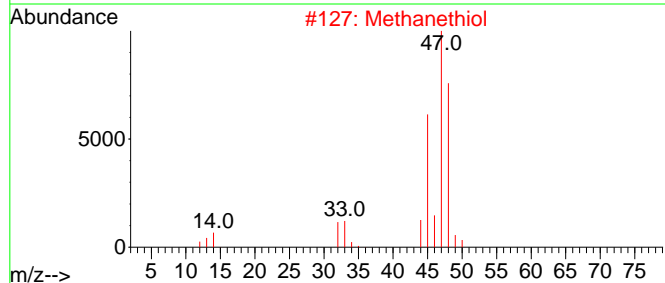
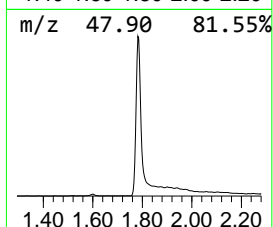
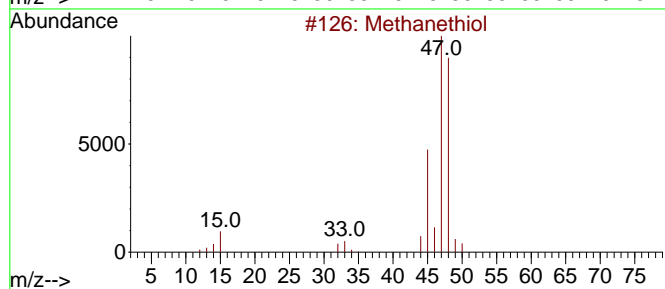
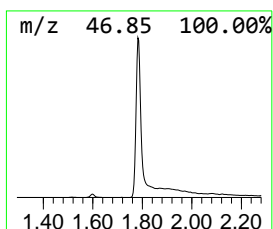
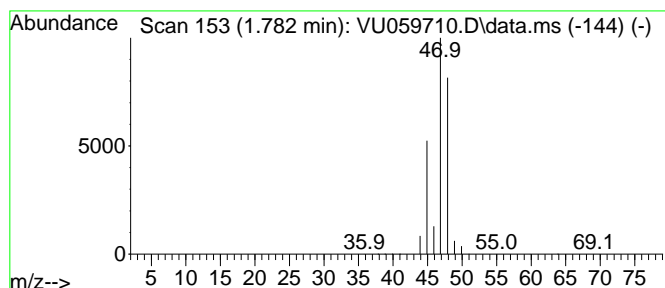
Quant Method : Z:\voasrv\HPCHEM1\MSVOA_U\Method\SFAMUTR061724WMA.M
 Quant Title : TRACE VOA SFAM1.0

TIC Library : C:\Database\NIST20.L
 TIC Integration Parameters: LSCINT.P

 Peak Number 1 Methanethiol Concentration Rank 5

R.T.	EstConc	Area	Relative to ISTD	R.T.
1.782	4.83 ug/L	890261	1,4-Difluorobenzene	6.242

Hit#	of	Tentative ID	MW	MolForm	CAS#	Qual
1	5	Methanethiol	48	CH4S	000074-93-1	90
2		Methanethiol	48	CH4S	000074-93-1	90
3		Hydroxylamine, O-methyl-	47	CH5NO	000067-62-9	7
4		Hydroxylamine, O-methyl-	47	CH5NO	000067-62-9	7
5		Methane, nitroso-	45	CH3NO	000865-40-7	5



Data Path : Z:\voasrv\HPCHEM1\MSVOA_U\Data\VU070124\
 Data File : VU059710.D
 Acq On : 02 Jul 2024 01:40
 Operator : MD/SY
 Sample : P3121-12
 Misc : 25.0mL/MSVOA_U/WATER
 ALS Vial : 43 Sample Multiplier: 1

Instrument :
 MSVOA_U
 ClientSampleId :
 COBJ8

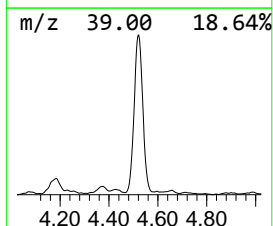
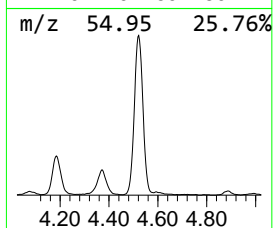
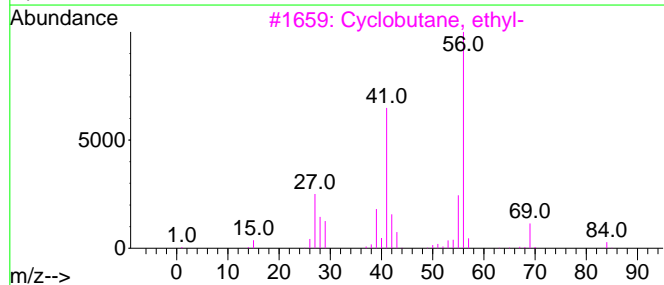
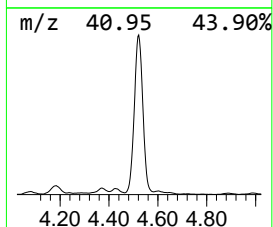
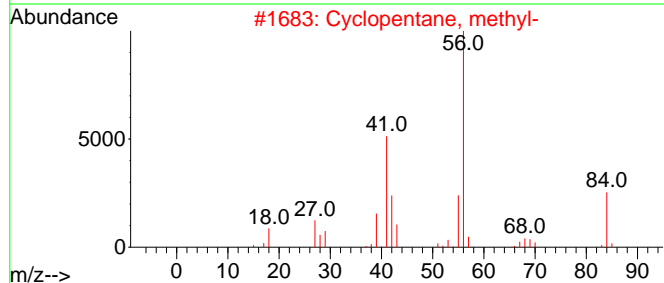
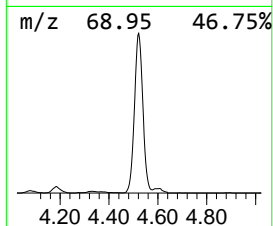
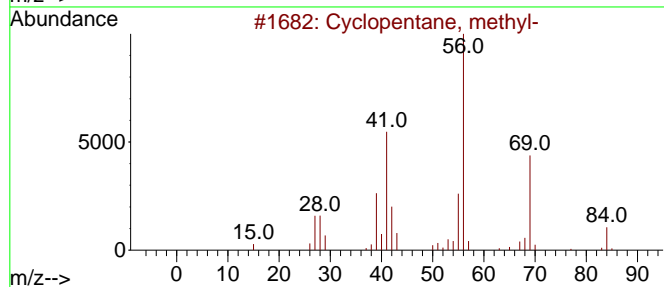
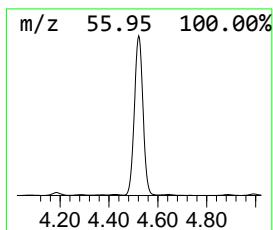
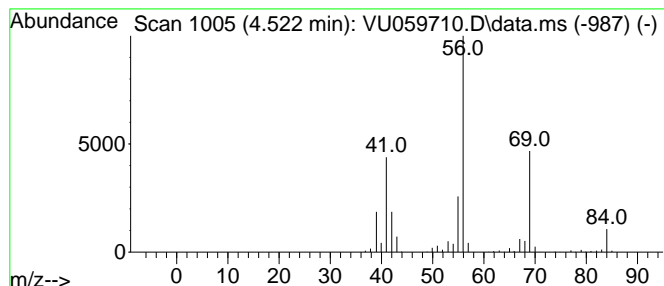
Quant Method : Z:\voasrv\HPCHEM1\MSVOA_U\Method\SFAMUTR061724WMA.M
 Quant Title : TRACE VOA SFAM1.0

TIC Library : C:\Database\NIST20.L
 TIC Integration Parameters: LSCINT.P

 Peak Number 2 (DEL) Alkane: Cyclic4.522 Concentration Rank 2

R.T.	EstConc	Area	Relative to ISTD	R.T.
4.522	10.81 ug/L	1991500	1,4-Difluorobenzene	6.242

Hit#	of 5	Tentative ID	MW	MolForm	CAS#	Qual
1		Cyclopentane, methyl-	84	C6H12	000096-37-7	94
2		Cyclopentane, methyl-	84	C6H12	000096-37-7	86
3		Cyclobutane, ethyl-	84	C6H12	004806-61-5	78
4		Cyclopentane, methyl-	84	C6H12	000096-37-7	78
5		1H-Tetrazole, 5-methyl-	84	C2H4N4	004076-36-2	72



Data Path : Z:\voasrv\HPCHEM1\MSVOA_U\Data\VU070124\
 Data File : VU059710.D
 Acq On : 02 Jul 2024 01:40
 Operator : MD/SY
 Sample : P3121-12
 Misc : 25.0mL/MSVOA_U/WATER
 ALS Vial : 43 Sample Multiplier: 1

Instrument :
 MSVOA_U
 ClientSampleId :
 COBJ8

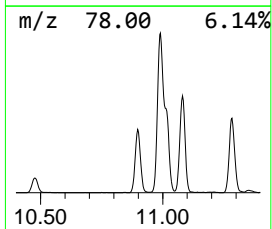
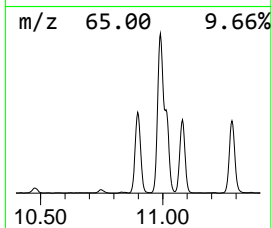
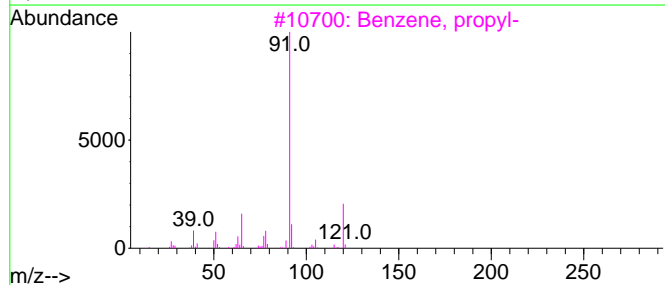
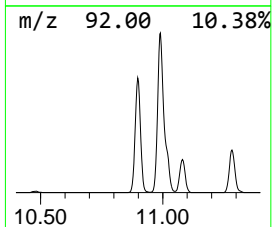
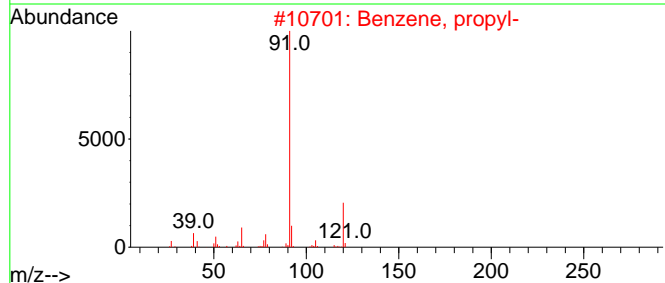
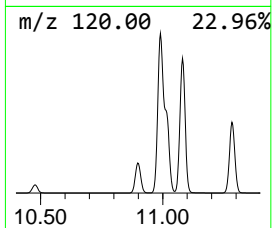
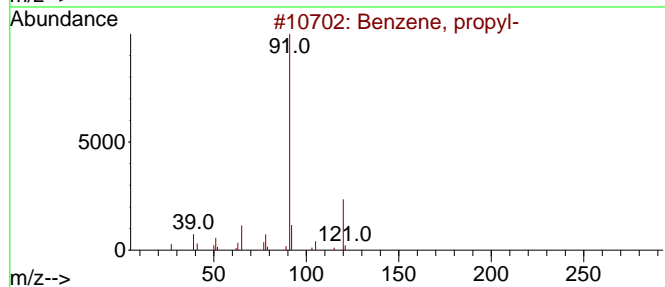
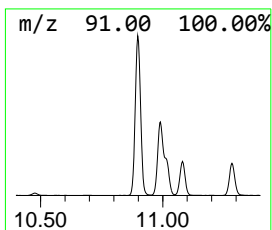
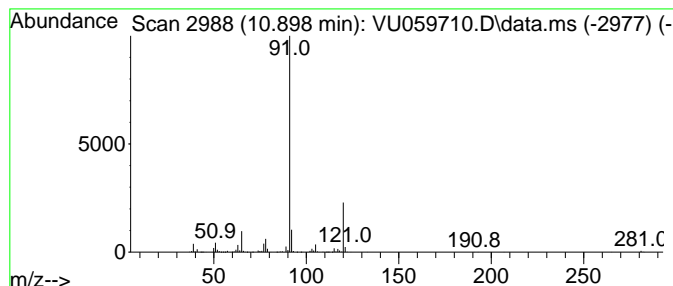
Quant Method : Z:\voasrv\HPCHEM1\MSVOA_U\Method\SFAMUTR061724WMA.M
 Quant Title : TRACE VOA SFAM1.0

TIC Library : C:\Database\NIST20.L
 TIC Integration Parameters: LSCINT.P

 Peak Number 3 Benzene, propyl- Concentration Rank 8

R.T.	EstConc	Area	Relative to ISTD	R.T.
10.898	2.76 ug/L	1407600	1,4-Dichlorobenzene-d4	11.804

Hit#	of	5	Tentative ID	MW	MolForm	CAS#	Qual
1			Benzene, propyl-	120	C9H12	000103-65-1	93
2			Benzene, propyl-	120	C9H12	000103-65-1	90
3			Benzene, propyl-	120	C9H12	000103-65-1	90
4			Benzene, propyl-	120	C9H12	000103-65-1	90
5			N-Isobutyl(phenyl)methanesulfona...	227	C11H17NO2S	144615-94-1	64



Data Path : Z:\voasrv\HPCHEM1\MSVOA_U\Data\VU070124\
 Data File : VU059710.D
 Acq On : 02 Jul 2024 01:40
 Operator : MD/SY
 Sample : P3121-12
 Misc : 25.0mL/MSVOA_U/WATER
 ALS Vial : 43 Sample Multiplier: 1

Instrument :
 MSVOA_U
 ClientSampleId :
 COBJ8

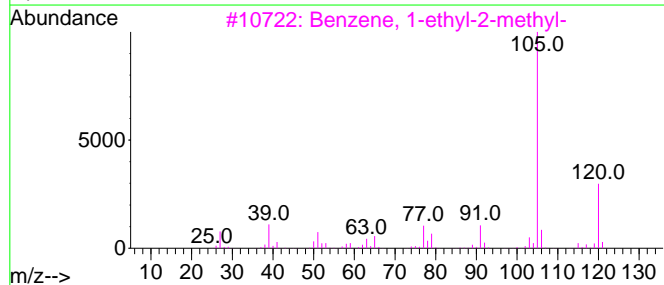
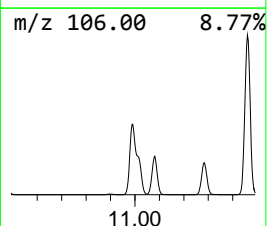
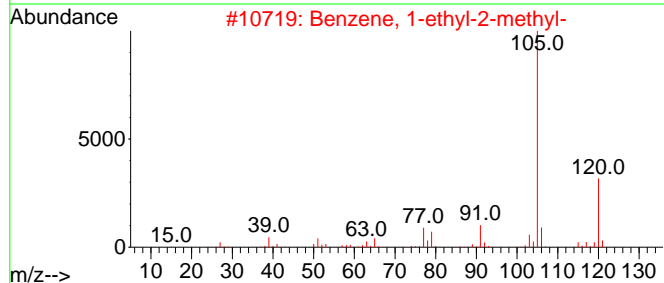
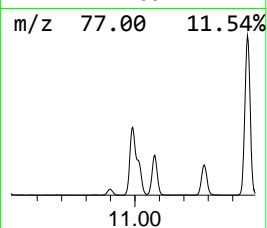
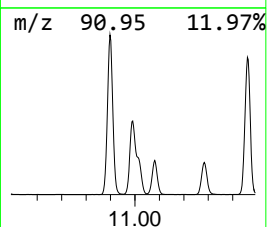
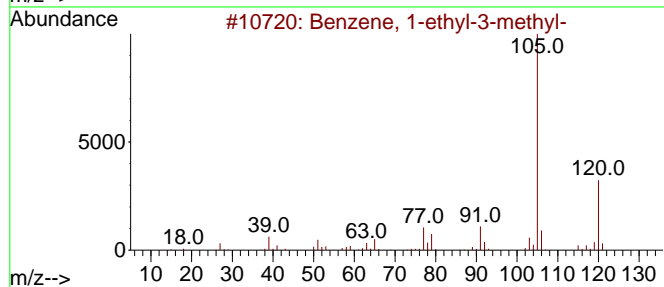
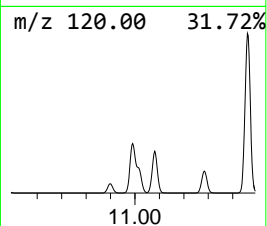
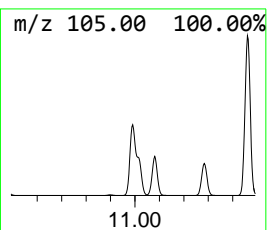
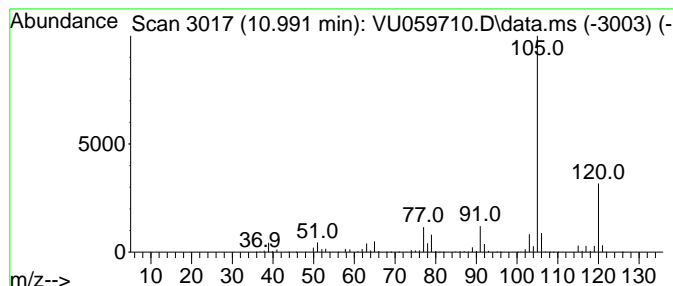
Quant Method : Z:\voasrv\HPCHEM1\MSVOA_U\Method\SFAMUTR061724WMA.M
 Quant Title : TRACE VOA SFAM1.0

TIC Library : C:\Database\NIST20.L
 TIC Integration Parameters: LSCINT.P

 Peak Number 4 Benzene, 1-ethyl-3-methyl- Concentration Rank 1

R.T.	EstConc	Area	Relative to ISTD	R.T.
10.991	18.91 ug/L	9644620	1,4-Dichlorobenzene-d4	11.804

Hit#	of	5	Tentative ID	MW	MolForm	CAS#	Qual
1			Benzene, 1-ethyl-3-methyl-	120	C9H12	000620-14-4	95
2			Benzene, 1-ethyl-2-methyl-	120	C9H12	000611-14-3	95
3			Benzene, 1-ethyl-2-methyl-	120	C9H12	000611-14-3	95
4			Benzene, 1-ethyl-3-methyl-	120	C9H12	000620-14-4	94
5			Mesitylene	120	C9H12	000108-67-8	91



Data Path : Z:\voasrv\HPCHEM1\MSVOA_U\Data\VU070124\
 Data File : VU059710.D
 Acq On : 02 Jul 2024 01:40
 Operator : MD/SY
 Sample : P3121-12
 Misc : 25.0mL/MSVOA_U/WATER
 ALS Vial : 43 Sample Multiplier: 1

Instrument :
 MSVOA_U
 ClientSampleId :
 COBJ8

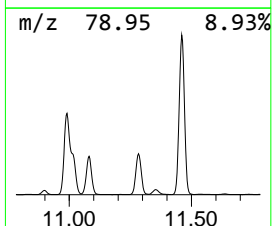
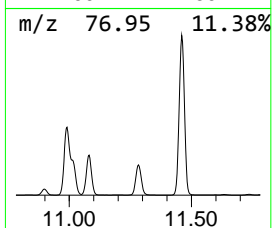
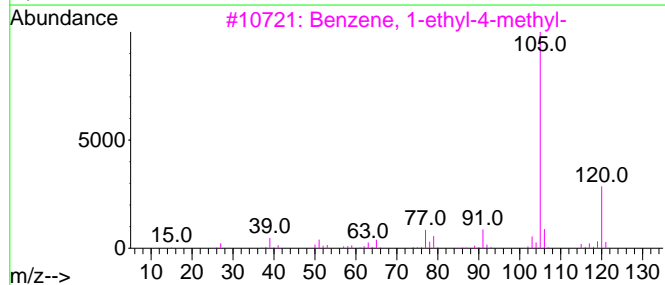
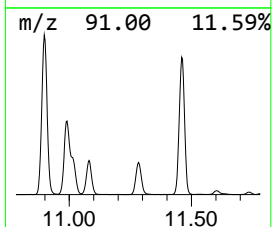
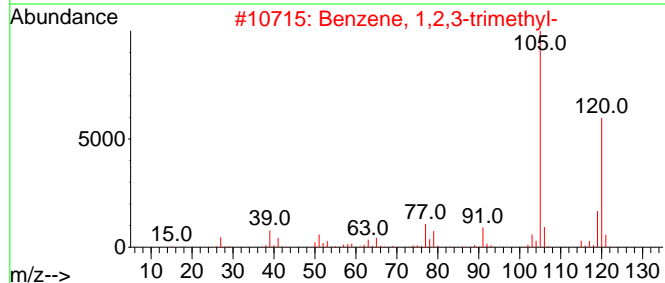
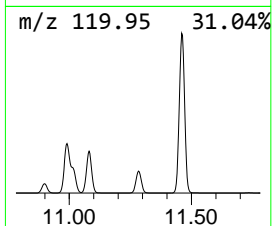
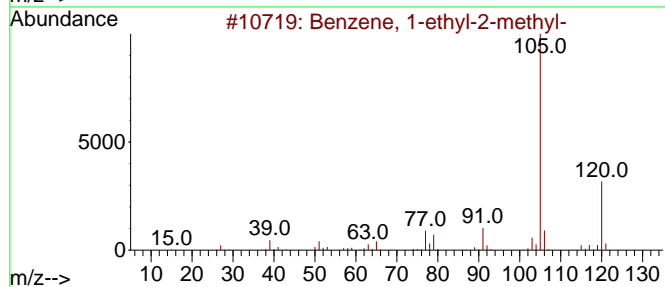
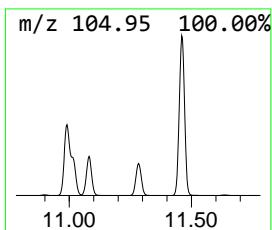
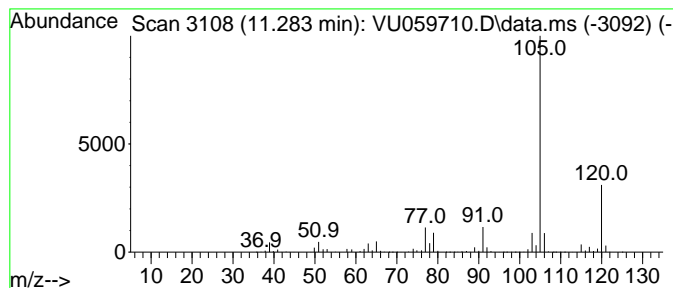
Quant Method : Z:\voasrv\HPCHEM1\MSVOA_U\Method\SFAMUTR061724WMA.M
 Quant Title : TRACE VOA SFAM1.0

TIC Library : C:\Database\NIST20.L
 TIC Integration Parameters: LSCINT.P

 Peak Number 5 Benzene, 1-ethyl-2-methyl- Concentration Rank 3

R.T.	EstConc	Area	Relative to ISTD	R.T.
11.283	6.24 ug/L	3183400	1,4-Dichlorobenzene-d4	11.804

Hit#	of	5	Tentative ID	MW	MolForm	CAS#	Qual
1			Benzene, 1-ethyl-2-methyl-	120	C9H12	000611-14-3	93
2			Benzene, 1,2,3-trimethyl-	120	C9H12	000526-73-8	90
3			Benzene, 1-ethyl-4-methyl-	120	C9H12	000622-96-8	90
4			Mesitylene	120	C9H12	000108-67-8	90
5			Benzene, 1-ethyl-4-methyl-	120	C9H12	000622-96-8	90



Data Path : Z:\voasrv\HPCHEM1\MSVOA_U\Data\VU070124\
 Data File : VU059710.D
 Acq On : 02 Jul 2024 01:40
 Operator : MD/SY
 Sample : P3121-12
 Misc : 25.0mL/MSVOA_U/WATER
 ALS Vial : 43 Sample Multiplier: 1

Instrument :
 MSVOA_U
 ClientSampleId :
 COBJ8

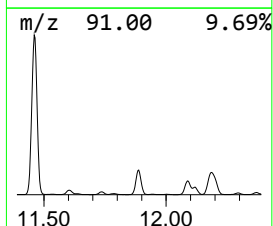
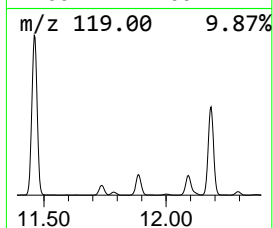
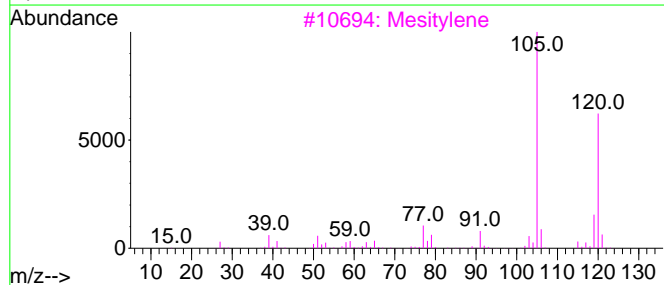
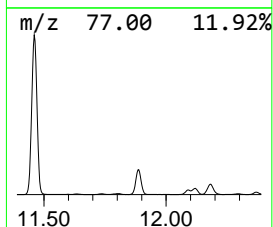
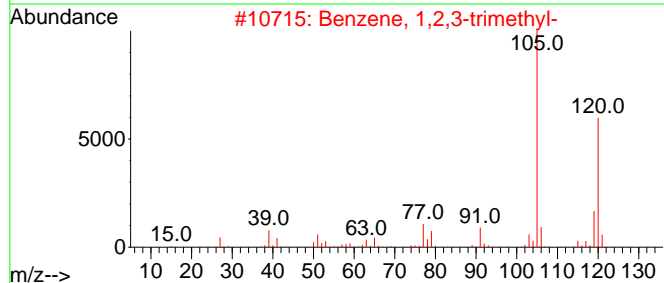
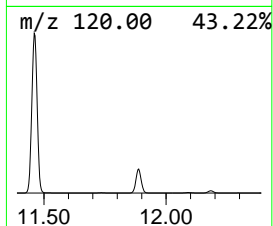
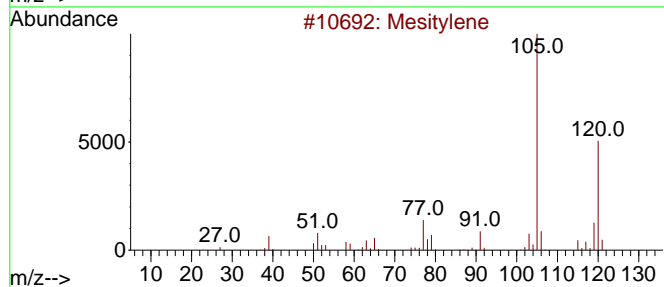
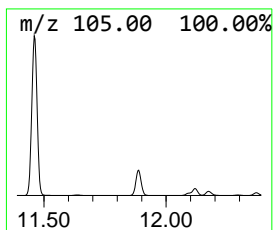
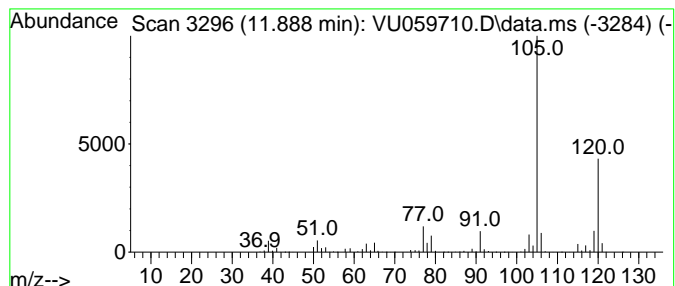
Quant Method : Z:\voasrv\HPCHEM1\MSVOA_U\Method\SFAMUTR061724WMA.M
 Quant Title : TRACE VOA SFAM1.0

TIC Library : C:\Database\NIST20.L
 TIC Integration Parameters: LSCINT.P

 Peak Number 6 Benzene, 1,2,3-trimethyl- Concentration Rank 4

R.T.	EstConc	Area	Relative to ISTD	R.T.
11.888	5.00 ug/L	2550810	1,4-Dichlorobenzene-d4	11.804

Hit#	of	5	Tentative ID	MW	MolForm	CAS#	Qual
1			Mesitylene	120	C9H12	000108-67-8	97
2			Benzene, 1,2,3-trimethyl-	120	C9H12	000526-73-8	95
3			Mesitylene	120	C9H12	000108-67-8	94
4			Benzene, 1,2,3-trimethyl-	120	C9H12	000526-73-8	94
5			Benzene, 1,2,4-trimethyl-	120	C9H12	000095-63-6	91



Data Path : Z:\voasrv\HPCHEM1\MSVOA_U\Data\VU070124\
 Data File : VU059710.D
 Acq On : 02 Jul 2024 01:40
 Operator : MD/SY
 Sample : P3121-12
 Misc : 25.0mL/MSVOA_U/WATER
 ALS Vial : 43 Sample Multiplier: 1

Instrument :
 MSVOA_U
 ClientSampleId :
 COBJ8

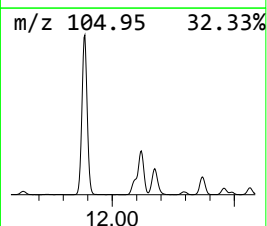
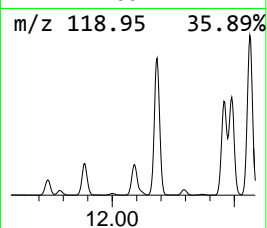
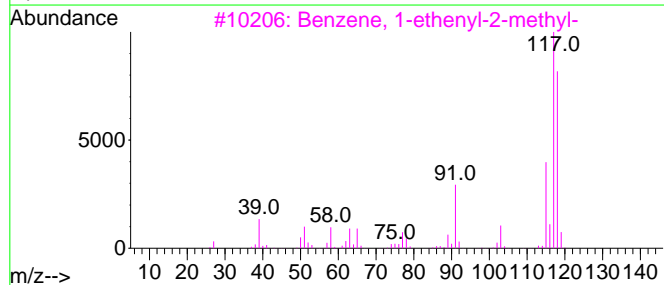
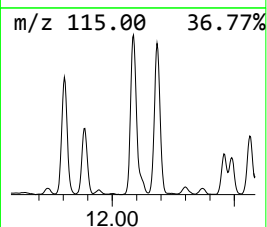
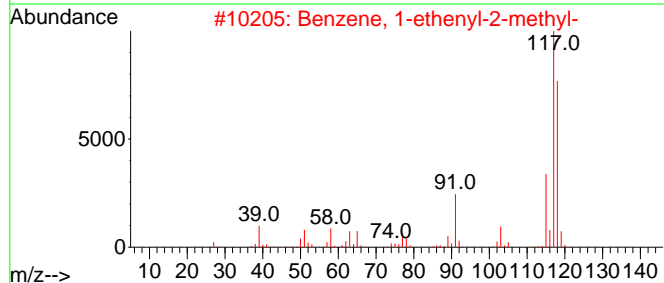
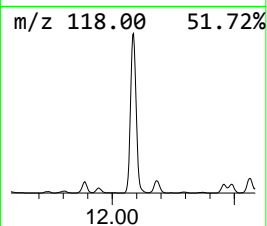
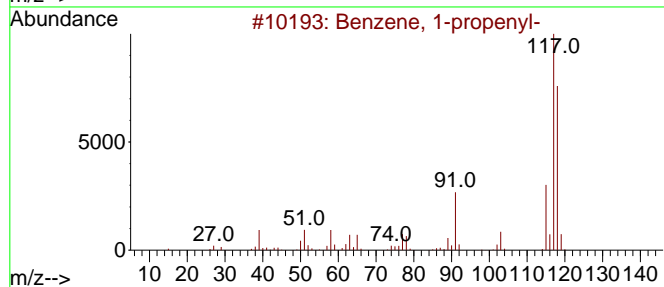
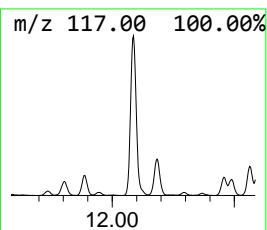
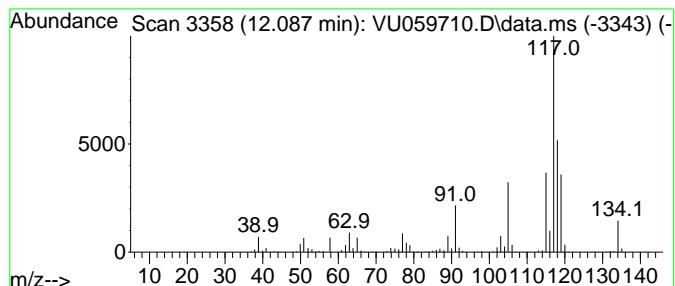
Quant Method : Z:\voasrv\HPCHEM1\MSVOA_U\Method\SFAMUTR061724WMA.M
 Quant Title : TRACE VOA SFAM1.0

TIC Library : C:\Database\NIST20.L
 TIC Integration Parameters: LSCINT.P

 Peak Number 7 Benzene, 1-propenyl- Concentration Rank 10

R.T.	EstConc	Area	Relative to ISTD	R.T.
12.087	2.22 ug/L	1130460	1,4-Dichlorobenzene-d4	11.804

Hit#	of	5	Tentative ID	MW	MolForm	CAS#	Qual
1			Benzene, 1-propenyl-	118	C9H10	000637-50-3	92
2			Benzene, 1-ethenyl-2-methyl-	118	C9H10	000611-15-4	91
3			Benzene, 1-ethenyl-2-methyl-	118	C9H10	000611-15-4	83
4			Benzene, 2-propenyl-	118	C9H10	000300-57-2	64
5			Deltacyclene	118	C9H10	007785-10-6	64



Data Path : Z:\voasrv\HPCHEM1\MSVOA_U\Data\VU070124\
 Data File : VU059710.D
 Acq On : 02 Jul 2024 01:40
 Operator : MD/SY
 Sample : P3121-12
 Misc : 25.0mL/MSVOA_U/WATER
 ALS Vial : 43 Sample Multiplier: 1

Instrument :
 MSVOA_U
 ClientSampleId :
 COBJ8

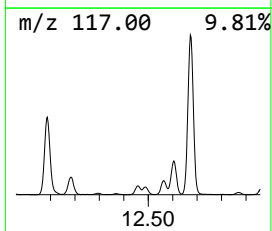
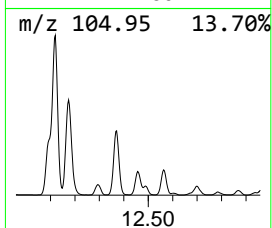
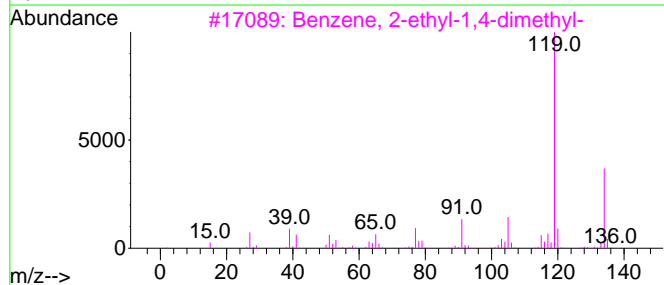
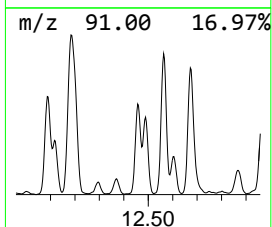
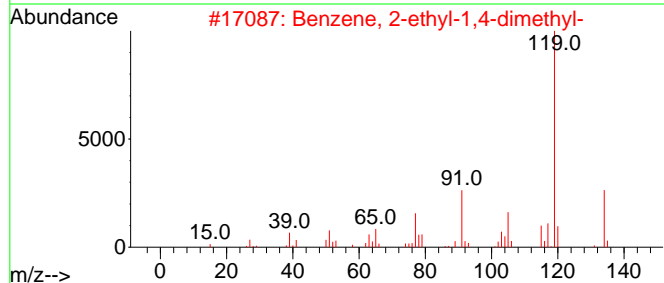
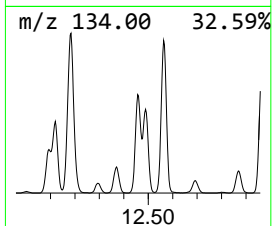
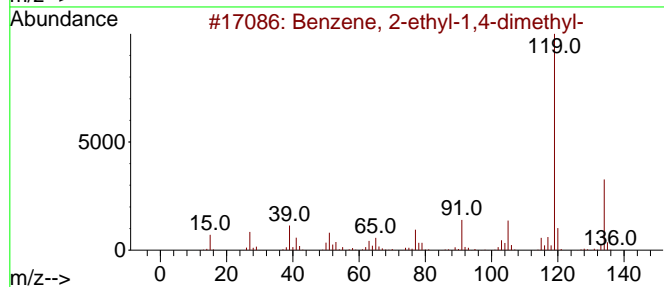
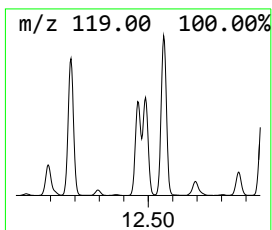
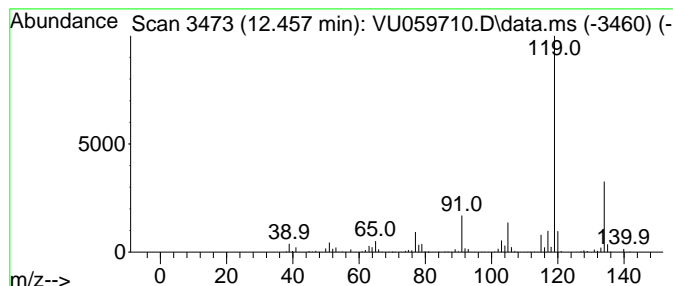
Quant Method : Z:\voasrv\HPCHEM1\MSVOA_U\Method\SFAMUTR061724WMA.M
 Quant Title : TRACE VOA SFAM1.0

TIC Library : C:\Database\NIST20.L
 TIC Integration Parameters: LSCINT.P

 Peak Number 8 Benzene, 2-ethyl-1,4-dimethyl- Concentration Rank 13

R.T.	EstConc	Area	Relative to ISTD	R.T.
12.457	1.59 ug/L	813424	1,4-Dichlorobenzene-d4	11.804

Hit#	of	5	Tentative ID	MW	MolForm	CAS#	Qual
1			Benzene, 2-ethyl-1,4-dimethyl-	134	C10H14	001758-88-9	97
2			Benzene, 2-ethyl-1,4-dimethyl-	134	C10H14	001758-88-9	96
3			Benzene, 2-ethyl-1,4-dimethyl-	134	C10H14	001758-88-9	95
4			o-Cymene	134	C10H14	000527-84-4	95
5			Benzene, 1-ethyl-2,3-dimethyl-	134	C10H14	000933-98-2	95



Data Path : Z:\voasrv\HPCHEM1\MSVOA_U\Data\VU070124\
 Data File : VU059710.D
 Acq On : 02 Jul 2024 01:40
 Operator : MD/SY
 Sample : P3121-12
 Misc : 25.0mL/MSVOA_U/WATER
 ALS Vial : 43 Sample Multiplier: 1

Instrument :
 MSVOA_U
 ClientSampleId :
 COBJ8

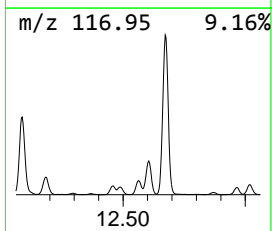
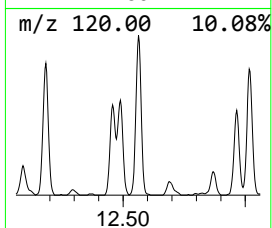
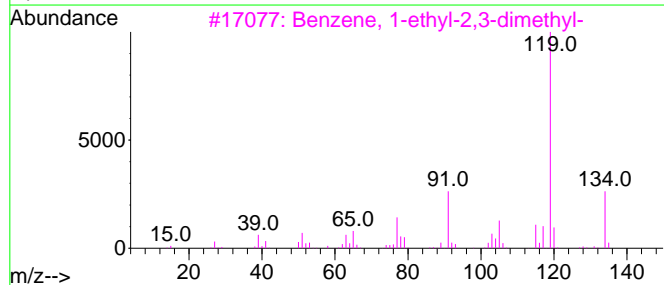
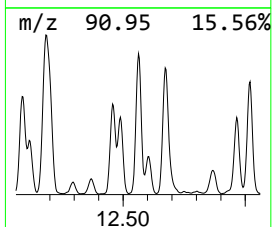
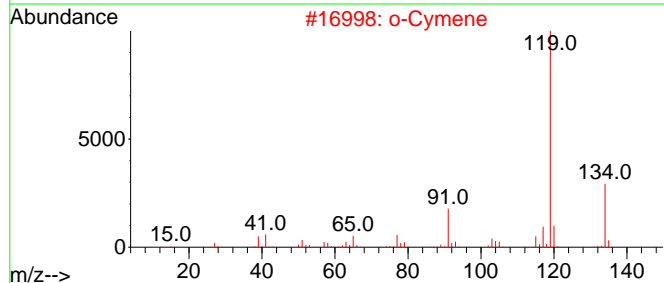
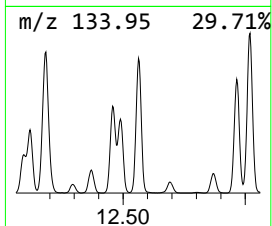
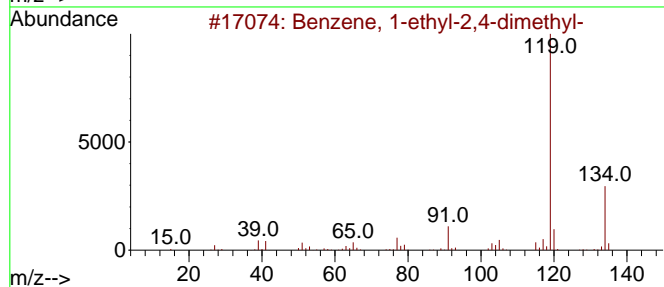
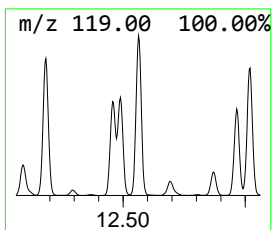
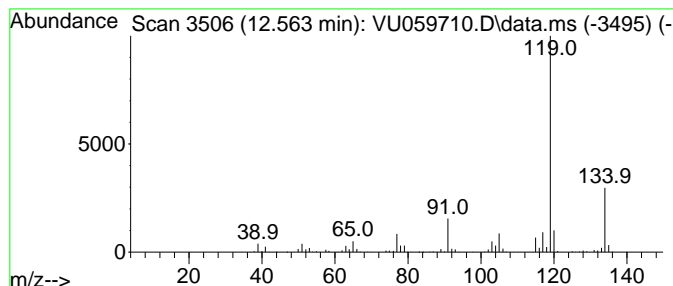
Quant Method : Z:\voasrv\HPCHEM1\MSVOA_U\Method\SFAMUTR061724WMA.M
 Quant Title : TRACE VOA SFAM1.0

TIC Library : C:\Database\NIST20.L
 TIC Integration Parameters: LSCINT.P

 Peak Number 9 Benzene, 1-ethyl-2,4-dimethyl- Concentration Rank 9

R.T.	EstConc	Area	Relative to ISTD	R.T.
12.563	2.40 ug/L	1223610	1,4-Dichlorobenzene-d4	11.804

Hit#	of	5	Tentative ID	MW	MolForm	CAS#	Qual
1			Benzene, 1-ethyl-2,4-dimethyl-	134	C10H14	000874-41-9	97
2			o-Cymene	134	C10H14	000527-84-4	97
3			Benzene, 1-ethyl-2,3-dimethyl-	134	C10H14	000933-98-2	96
4			Benzene, 4-ethyl-1,2-dimethyl-	134	C10H14	000934-80-5	95
5			Benzene, 1-ethyl-2,4-dimethyl-	134	C10H14	000874-41-9	95



Data Path : Z:\voasrv\HPCHEM1\MSVOA_U\Data\VU070124\
 Data File : VU059710.D
 Acq On : 02 Jul 2024 01:40
 Operator : MD/SY
 Sample : P3121-12
 Misc : 25.0mL/MSVOA_U/WATER
 ALS Vial : 43 Sample Multiplier: 1

Instrument :
 MSVOA_U
 ClientSampleId :
 COBJ8

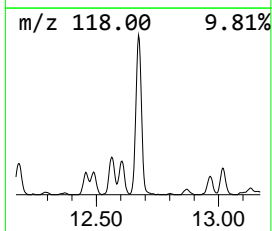
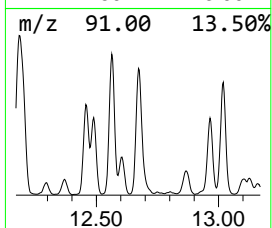
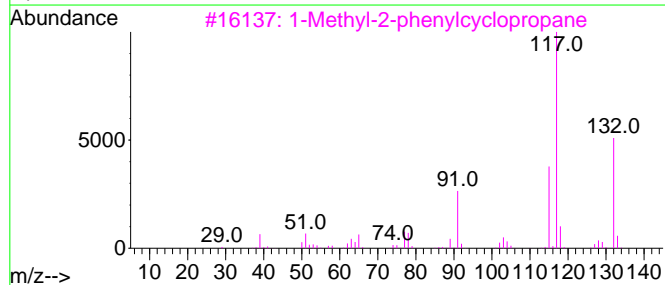
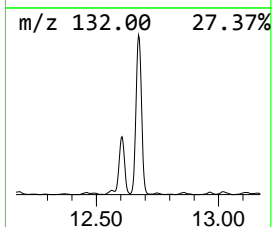
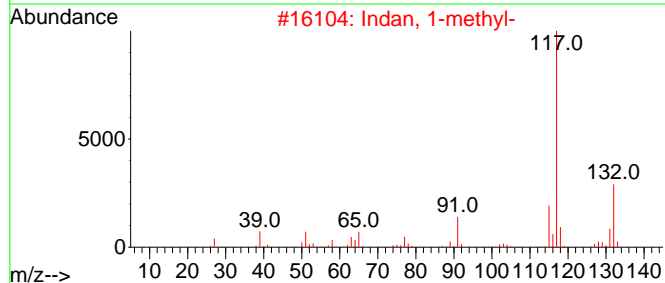
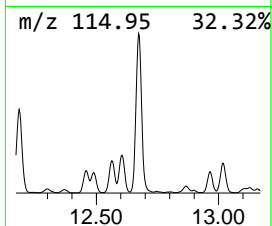
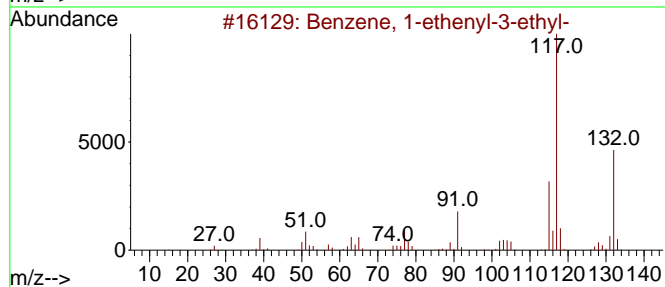
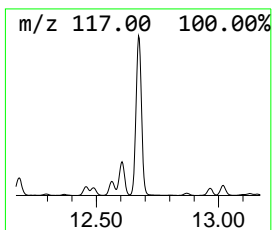
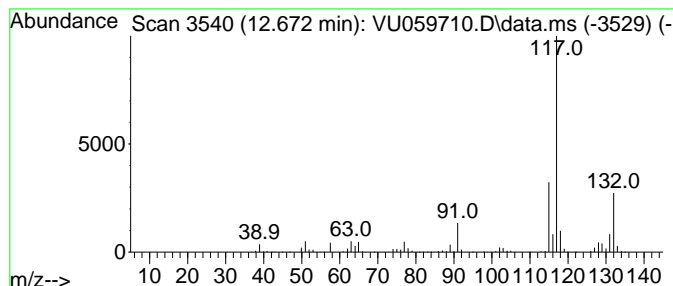
Quant Method : Z:\voasrv\HPCHEM1\MSVOA_U\Method\SFAMUTR061724WMA.M
 Quant Title : TRACE VOA SFAM1.0

TIC Library : C:\Database\NIST20.L
 TIC Integration Parameters: LSCINT.P

 Peak Number 10 Benzene, 1-ethenyl-3-ethyl- Concentration Rank 7

R.T.	EstConc	Area	Relative to ISTD	R.T.
12.672	2.98 ug/L	1520440	1,4-Dichlorobenzene-d4	11.804

Hit#	of 5	Tentative ID	MW	MolForm	CAS#	Qual
1		Benzene, 1-ethenyl-3-ethyl-	132	C10H12	007525-62-4	91
2		Indan, 1-methyl-	132	C10H12	000767-58-8	90
3		1-Methyl-2-phenylcyclopropane	132	C10H12	003145-76-4	90
4		Benzene, 1-ethenyl-4-ethyl-	132	C10H12	003454-07-7	87
5		1-Phenyl-1-butene	132	C10H12	000824-90-8	87



Data Path : Z:\voasrv\HPCHEM1\MSVOA_U\Data\VU070124\
 Data File : VU059710.D
 Acq On : 02 Jul 2024 01:40
 Operator : MD/SY
 Sample : P3121-12
 Misc : 25.0mL/MSVOA_U/WATER
 ALS Vial : 43 Sample Multiplier: 1

Instrument :
 MSVOA_U
 ClientSampleId :
 COBJ8

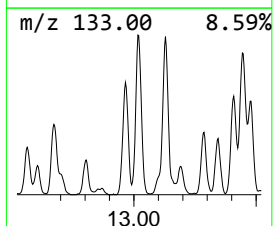
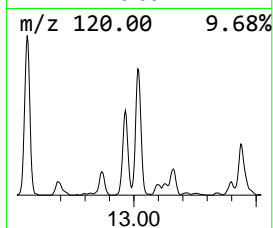
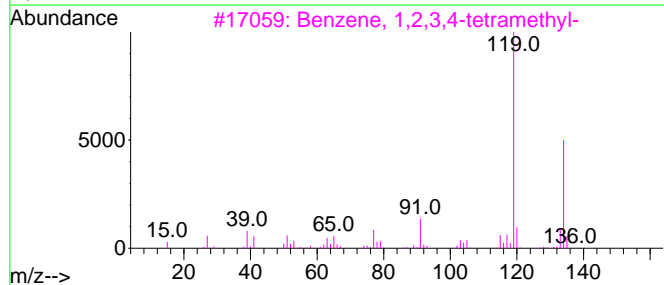
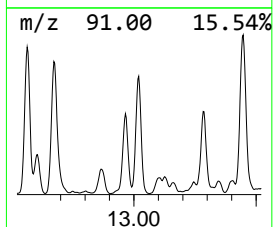
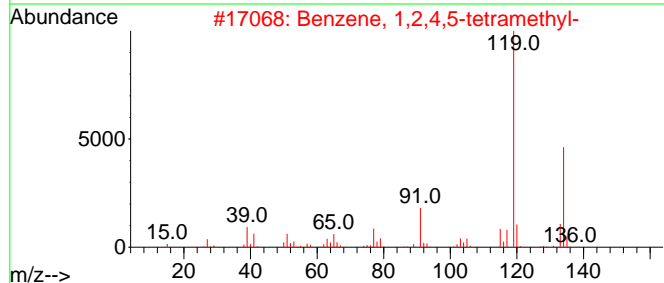
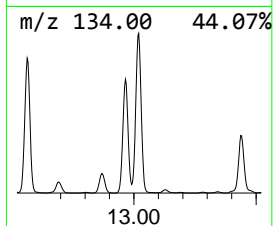
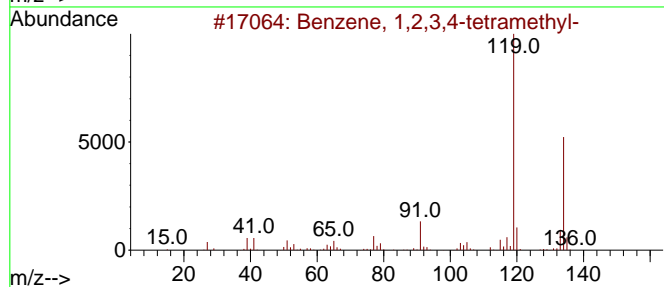
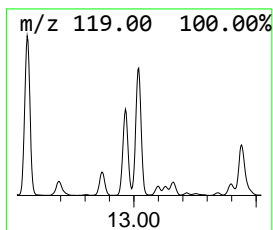
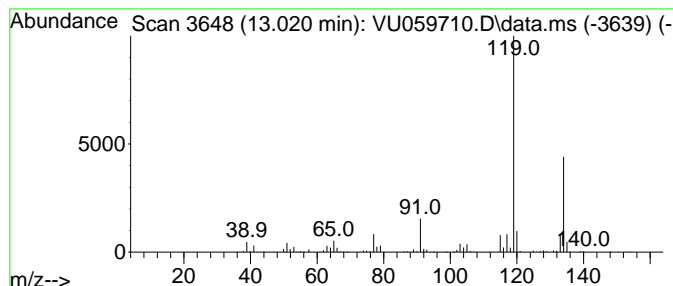
Quant Method : Z:\voasrv\HPCHEM1\MSVOA_U\Method\SFAMUTR061724WMA.M
 Quant Title : TRACE VOA SFAM1.0

TIC Library : C:\Database\NIST20.L
 TIC Integration Parameters: LSCINT.P

 Peak Number 11 Benzene, 1,2,3,4-tetramethyl- Concentration Rank 11

R.T.	EstConc	Area	Relative to ISTD	R.T.
13.020	2.11 ug/L	1077790	1,4-Dichlorobenzene-d4	11.804

Hit#	of	5	Tentative ID	MW	MolForm	CAS#	Qual
1			Benzene, 1,2,3,4-tetramethyl-	134	C10H14	000488-23-3	97
2			Benzene, 1,2,4,5-tetramethyl-	134	C10H14	000095-93-2	97
3			Benzene, 1,2,3,4-tetramethyl-	134	C10H14	000488-23-3	97
4			Benzene, 1,2,4,5-tetramethyl-	134	C10H14	000095-93-2	97
5			Benzene, 1,2,3,5-tetramethyl-	134	C10H14	000527-53-7	96



Data Path : Z:\voasrv\HPCHEM1\MSVOA_U\Data\VU070124\
 Data File : VU059710.D
 Acq On : 02 Jul 2024 01:40
 Operator : MD/SY
 Sample : P3121-12
 Misc : 25.0mL/MSVOA_U/WATER
 ALS Vial : 43 Sample Multiplier: 1

Instrument :
 MSVOA_U
 ClientSampleId :
 COBJ8

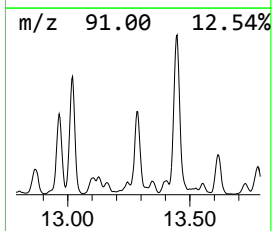
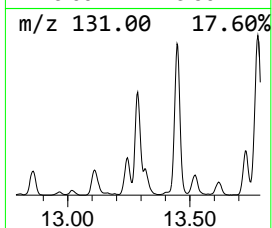
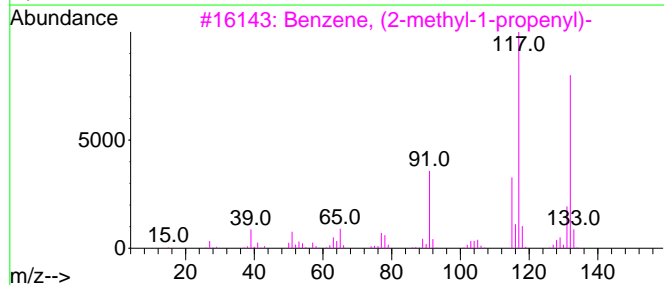
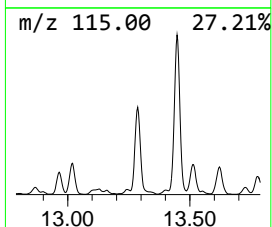
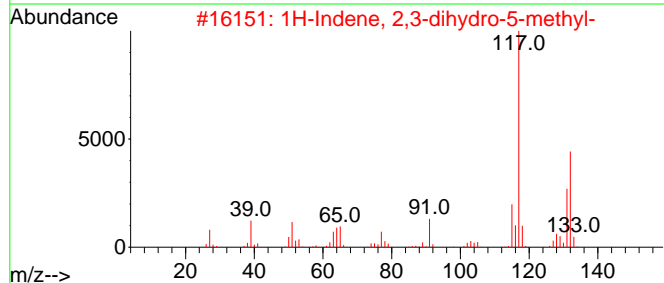
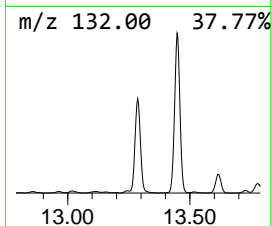
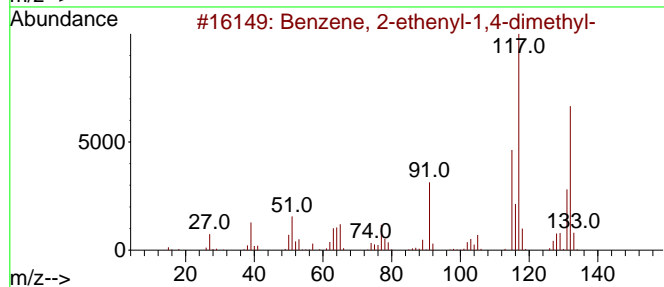
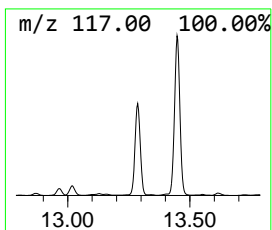
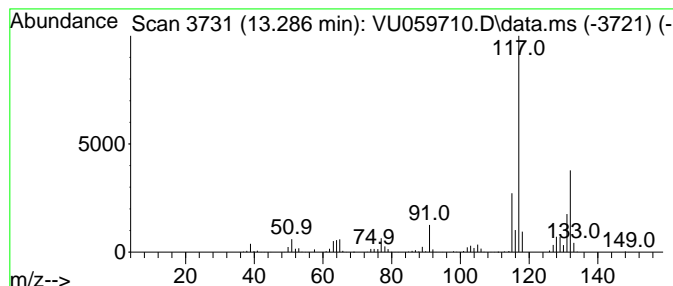
Quant Method : Z:\voasrv\HPCHEM1\MSVOA_U\Method\SFAMUTR061724WMA.M
 Quant Title : TRACE VOA SFAM1.0

TIC Library : C:\Database\NIST20.L
 TIC Integration Parameters: LSCINT.P

 Peak Number 12 Benzene, 2-ethenyl-1,4-dime... Concentration Rank 12

R.T.	EstConc	Area	Relative to ISTD	R.T.
13.287	1.78 ug/L	910628	1,4-Dichlorobenzene-d4	11.804

Hit#	of	5	Tentative ID	MW	MolForm	CAS#	Qual
1			Benzene, 2-ethenyl-1,4-dimethyl-	132	C10H12	002039-89-6	91
2			1H-Indene, 2,3-dihydro-5-methyl-	132	C10H12	000874-35-1	90
3			Benzene, (2-methyl-1-propenyl)-	132	C10H12	000768-49-0	90
4			1H-Indene, 2,3-dihydro-4-methyl-	132	C10H12	000824-22-6	90
5			Benzene, 1-ethenyl-3-ethyl-	132	C10H12	007525-62-4	87



Data Path : Z:\voasrv\HPCHEM1\MSVOA_U\Data\VU070124\
 Data File : VU059710.D
 Acq On : 02 Jul 2024 01:40
 Operator : MD/SY
 Sample : P3121-12
 Misc : 25.0mL/MSVOA_U/WATER
 ALS Vial : 43 Sample Multiplier: 1

Instrument :
 MSVOA_U
 ClientSampleId :
 COBJ8

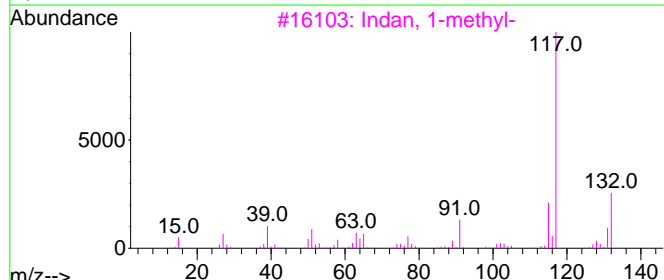
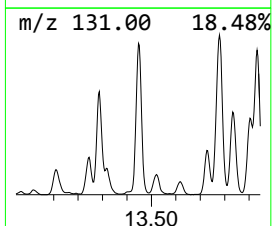
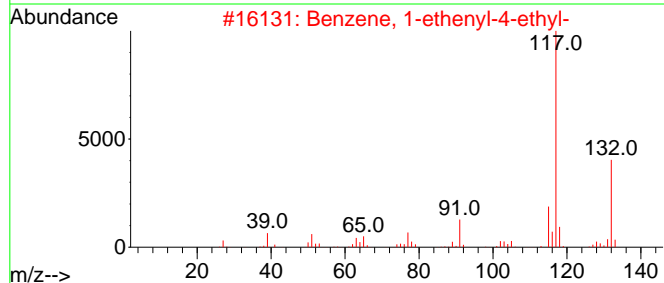
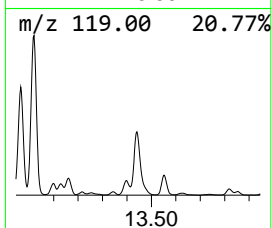
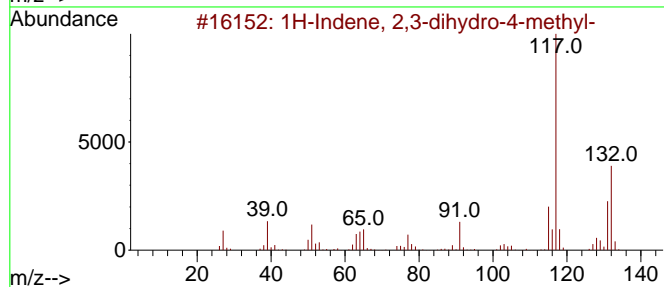
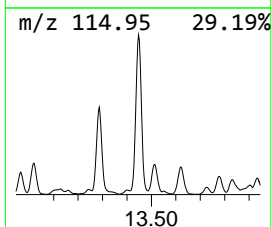
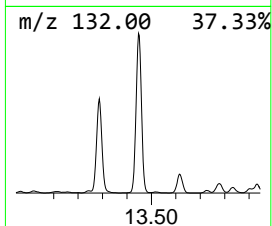
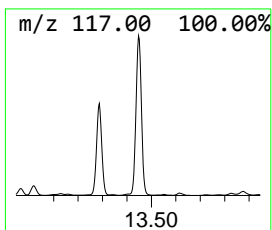
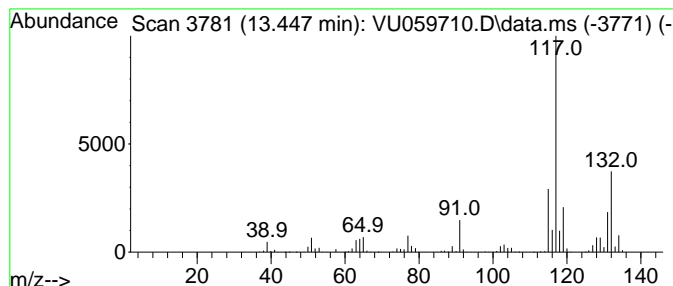
Quant Method : Z:\voasrv\HPCHEM1\MSVOA_U\Method\SFAMUTR061724WMA.M
 Quant Title : TRACE VOA SFAM1.0

TIC Library : C:\Database\NIST20.L
 TIC Integration Parameters: LSCINT.P

 Peak Number 13 1H-Indene, 2,3-dihydro-4-me... Concentration Rank 6

R.T.	EstConc	Area	Relative to ISTD	R.T.
13.447	3.80 ug/L	1940070	1,4-Dichlorobenzene-d4	11.804

Hit#	of 5	Tentative ID	MW	MolForm	CAS#	Qual
1		1H-Indene, 2,3-dihydro-4-methyl-	132	C10H12	000824-22-6	81
2		Benzene, 1-ethenyl-4-ethyl-	132	C10H12	003454-07-7	76
3		Indan, 1-methyl-	132	C10H12	000767-58-8	76
4		1H-Indene, 2,3-dihydro-5-methyl-	132	C10H12	000874-35-1	76
5		Benzene, 1-ethenyl-4-ethyl-	132	C10H12	003454-07-7	76



Data Path : Z:\voasrv\HPCHEM1\MSVOA_U\Data\VU070124\
 Data File : VU059710.D
 Acq On : 02 Jul 2024 01:40
 Operator : MD/SY
 Sample : P3121-12
 Misc : 25.0mL/MSVOA_U/WATER
 ALS Vial : 43 Sample Multiplier: 1

Instrument :
 MSVOA_U
 ClientSampleId :
 C0BJ8

Quant Method : Z:\voasrv\HPCHEM1\MSVOA_U\Method\SFAMUTR061724WMA.M
 Quant Title : TRACE VOA SFAM1.0

TIC Library : C:\Database\NIST0.L
 TIC Integration Parameters: LSCINT.P

TIC Top Hit name	RT	EstConc	Units	Response	--Internal Standard--			
					#	RT	Resp	Conc
Methanethiol	1.782	4.8	ug/L	890261	1	6.242	920867	5.0
(DEL) Alkane: C...	4.522	10.8	ug/L	1991500	1	6.242	920867	5.0
Benzene, propyl-	10.898	2.8	ug/L	1407600	3	11.804	2550810	5.0
Benzene, 1-ethy...	10.991	18.9	ug/L	9644620	3	11.804	2550810	5.0
Benzene, 1-ethy...	11.283	6.2	ug/L	3183400	3	11.804	2550810	5.0
Benzene, 1,2,3-...	11.888	5.0	ug/L	2550810	3	11.804	2550810	5.0
Benzene, 1-prop...	12.087	2.2	ug/L	1130460	3	11.804	2550810	5.0
Benzene, 2-ethy...	12.457	1.6	ug/L	813424	3	11.804	2550810	5.0
Benzene, 1-ethy...	12.563	2.4	ug/L	1223610	3	11.804	2550810	5.0
Benzene, 1-ethe...	12.672	3.0	ug/L	1520440	3	11.804	2550810	5.0
Benzene, 1,2,3,...	13.020	2.1	ug/L	1077790	3	11.804	2550810	5.0
Benzene, 2-ethe...	13.287	1.8	ug/L	910628	3	11.804	2550810	5.0
1H-Indene, 2,3-...	13.447	3.8	ug/L	1940070	3	11.804	2550810	5.0