

Data Path : Z:\VOASRV\HPCHEM1\MSVOA U\DATA\VU070318\  
 Data File : VU025186.D  
 Acq On : 03 Jul 2018 13:14  
 Operator : MD/SY  
 Sample : J3759-14  
 Misc : 5.0mL/MSVOA U/WATER  
 ALS Vial : 7 Sample Multiplier: 1

Instrument :  
 MSVOA\_U  
 ClientSampleId :  
 W/P021MW358-180626

Integration Parameters: RTEINT.P

Integrator: RTE  
 Smoothing : ON Filtering: 5  
 Sampling : 1 Min Area: 3 % of largest Peak  
 Start Thrs: 0.2 Max Peaks: 100  
 Stop Thrs : 0 Peak Location: TOP

If leading or trailing edge < 100 prefer < Baseline drop else tangent >  
 Peak separation: 5

Method : Z:\VOASRV\HPCHEM1\MSVOA\_U\METHOD\82U061318W.M  
 Title : SW846 8260

Signal : TIC

peak #	R.T. min	first scan	max scan	last scan	PK TY	peak height	corr. area	corr. % max.	% of total
1	1.089	135	155	177	rBV	929325	1080278	31.52%	7.876%
2	1.404	245	253	270	rBV	1079048	1151493	33.59%	8.395%
3	2.285	518	527	536	rBV2	25813	37051	1.08%	0.270%
4	4.230	1105	1132	1169	rBV	997858	2437499	71.11%	17.771%
5	4.889	1321	1337	1353	rBV	184149	413446	12.06%	3.014%
6	4.989	1353	1368	1390	rVB	269296	596992	17.42%	4.353%
7	5.313	1452	1469	1485	rBV	193262	409561	11.95%	2.986%
8	5.394	1485	1494	1511	rVB2	22726	50630	1.48%	0.369%
9	5.889	1628	1648	1671	rBV	370119	752700	21.96%	5.488%
10	6.191	1729	1742	1761	rVB	125608	245298	7.16%	1.788%
11	7.571	2157	2171	2187	rBV	670404	1168713	34.10%	8.521%
12	9.124	2631	2654	2690	rBV2	1552140	3427730	100.00%	24.991%
13	10.313	3011	3024	3041	rBV	507589	819907	23.92%	5.978%
14	11.104	3252	3270	3281	rBV	44175	69247	2.02%	0.505%
15	11.487	3378	3389	3412	rVB	579277	972891	28.38%	7.093%
16	11.886	3502	3513	3529	rBV	50345	82542	2.41%	0.602%

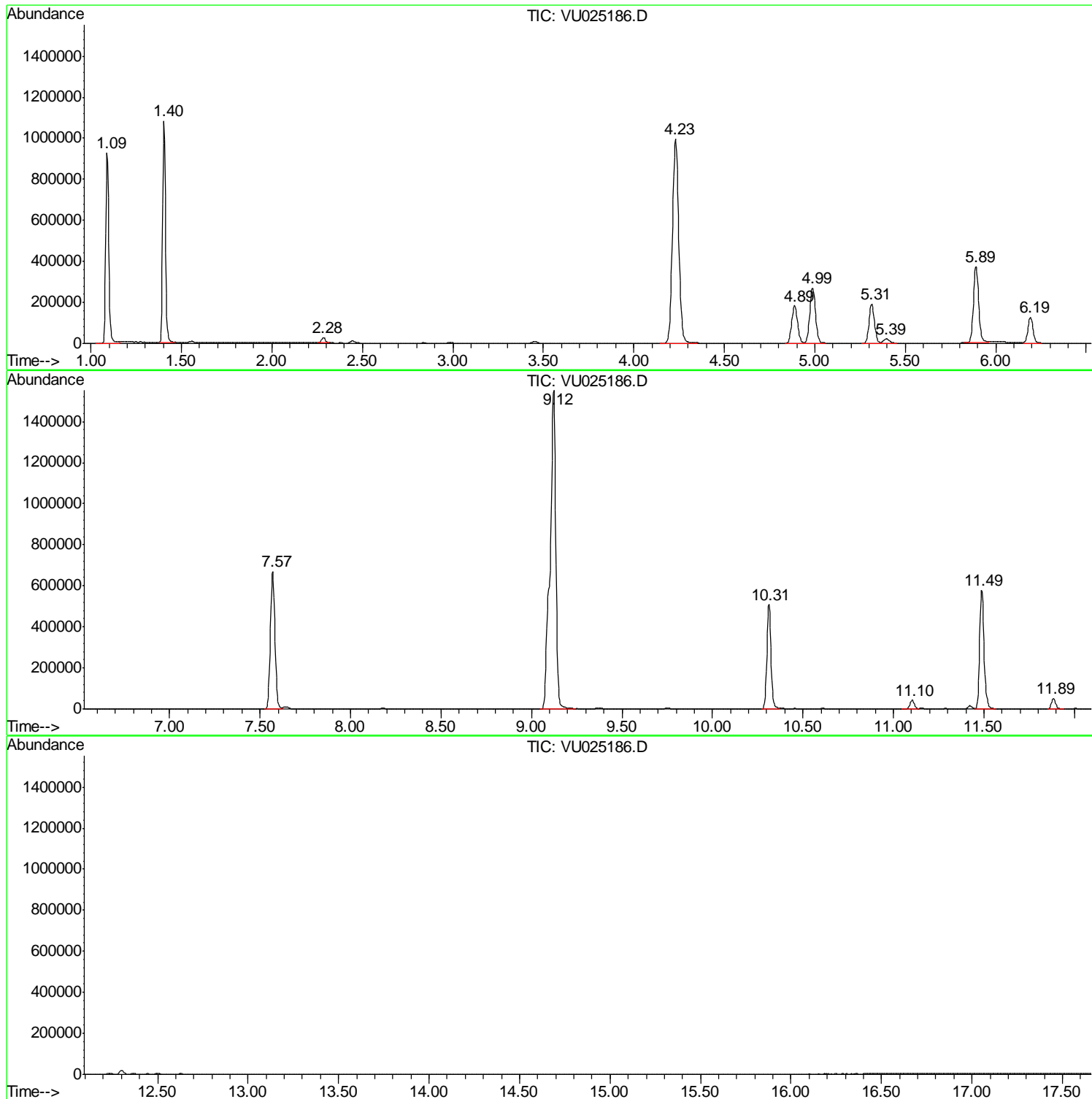
Sum of corrected areas: 13715978

Data Path : Z:\VOASRV\HPCHEM1\MSVOA U\DATA\VU070318\  
Data File : VU025186.D  
Acq On : 03 Jul 2018 13:14  
Operator : MD/SY  
Sample : J3759-14  
Misc : 5.0mL/MSVOA U/WATER  
ALS Vial : 7 Sample Multiplier: 1

Instrument :  
MSVOA\_U  
ClientSampleId :  
WP021MW358-180626

Quant Method : Z:\VOASRV\HPCHEM1\MSVOA\_U\METHOD\82U061318W.M  
Quant Title : SW846 8260

TIC Library : C:\DATABASE\NIST11.L  
TIC Integration Parameters: LSCINT.P



Data Path : Z:\VOASRV\HPCHEM1\MSVOA\_U\DATA\VU070318\  
Data File : VU025186.D  
Acq On : 03 Jul 2018 13:14  
Operator : MD/SY  
Sample : J3759-14  
Misc : 5.0mL/MSVOA\_U/WATER  
ALS Vial : 7 Sample Multiplier: 1

**Instrument :**  
MSVOA\_U  
**ClientSampleId :**  
WP021MW358-180626

Quant Method : Z:\VOASRV\HPCHEM1\MSVOA\_U\METHOD\82U061318W.M  
Quant Title : SW846 8260

TIC Library : C:\DATABASE\NIST11.L  
TIC Integration Parameters: LSCINT.P

No Library Search Compounds Detected

\*\*\*\*\*

Data Path : Z:\VOASRV\HPCHEM1\MSVOA\_U\DATA\VU070318\  
Data File : VU025186.D  
Acq On : 03 Jul 2018 13:14  
Operator : MD/SY  
Sample : J3759-14  
Misc : 5.0mL/MSVOA\_U/WATER  
ALS Vial : 7 Sample Multiplier: 1

Instrument :  
MSVOA\_U  
ClientSampleId :  
WP021MW358-180626

Quant Method : Z:\VOASRV\HPCHEM1\MSVOA\_U\METHOD\82U061318W.M  
Quant Title : SW846 8260

TIC Library : C:\DATABASE\NIST11.L  
TIC Integration Parameters: LSCINT.P

TIC Top Hit name	RT	EstConc	Units	Response	--Internal Standard--			
					#	RT	Resp	Conc

---