

Data Path : Z:\voasrv\HPCHEM1\MSVOA_U\Data\VU070323\
 Data File : VU054746.D
 Acq On : 03 Jul 2023 14:00
 Operator : MD/SY
 Sample : 03495-10
 Misc : 25.0mL/MSVOA_U/WATER
 ALS Vial : 12 Sample Multiplier: 1

Instrument :
 MSVOA_U
 ClientSampleId :
 HOFB4

Integration Parameters: rteint.p
 Integrator: RTE
 Smoothing : ON Filtering: 5
 Sampling : 1 Min Area: 3 % of largest Peak
 Start Thrs: 0.1 Max Peaks: 100
 Stop Thrs : 0 Peak Location: TOP

If leading or trailing edge < 100 prefer < Baseline drop else tangent >
 Peak separation: 5

Method : Z:\voasrv\HPCHEM1\MSVOA_U\Method\SFAMUTR060723WMA.M
 Title : TRACE VOA SFAM1.0

Signal : TIC: VU054746.D\data.ms

peak #	R.T. min	first scan	max scan	last scan	PK TY	peak height	corr. area	corr. % max.	% of total
1	1.596	86	95	110	rVB2	112769	149642	1.33%	0.775%
2	1.908	185	192	210	rVB	85551	124981	1.11%	0.647%
3	2.560	382	395	411	rVB2	153102	255048	2.26%	1.321%
4	4.625	1025	1037	1069	rBV	160503	431415	3.82%	2.234%
5	5.059	1155	1172	1193	rVB2	155947	347713	3.08%	1.801%
6	5.721	1357	1378	1405	rBV2	307937	801497	7.10%	4.151%
7	6.245	1527	1541	1560	rBV	323224	624712	5.53%	3.235%
8	6.538	1618	1632	1651	rBV	354019	669517	5.93%	3.467%
9	6.689	1665	1679	1695	rBV2	202019	393268	3.48%	2.037%
10	7.563	1939	1951	1970	rBV	98439	178526	1.58%	0.925%
11	7.895	2038	2054	2069	rBV	347858	608189	5.39%	3.150%
12	8.551	2243	2258	2274	rBV	6703054	11288759	100.00%	58.461%
13	8.631	2274	2283	2320	rVB	566277	1124320	9.96%	5.823%
14	9.415	2514	2527	2550	rBV	457647	772327	6.84%	4.000%
15	10.753	2931	2943	2957	rBV2	163177	265349	2.35%	1.374%
16	11.811	3258	3272	3294	rBV	436938	710625	6.29%	3.680%
17	12.190	3377	3390	3411	rBV	345846	563854	4.99%	2.920%

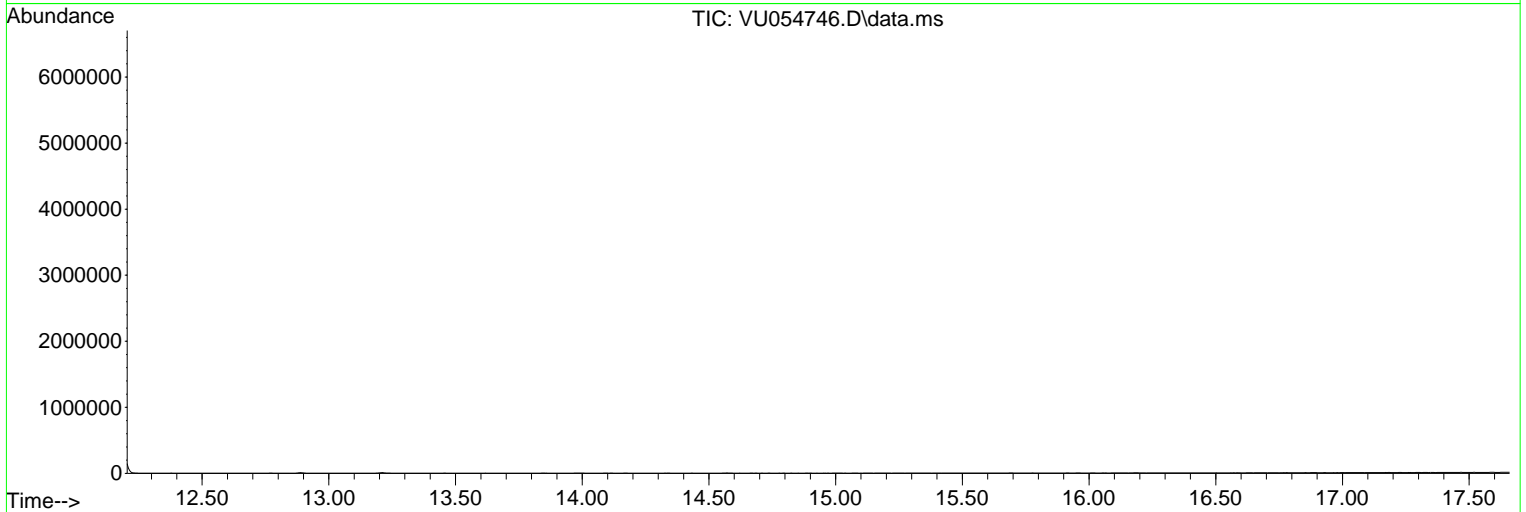
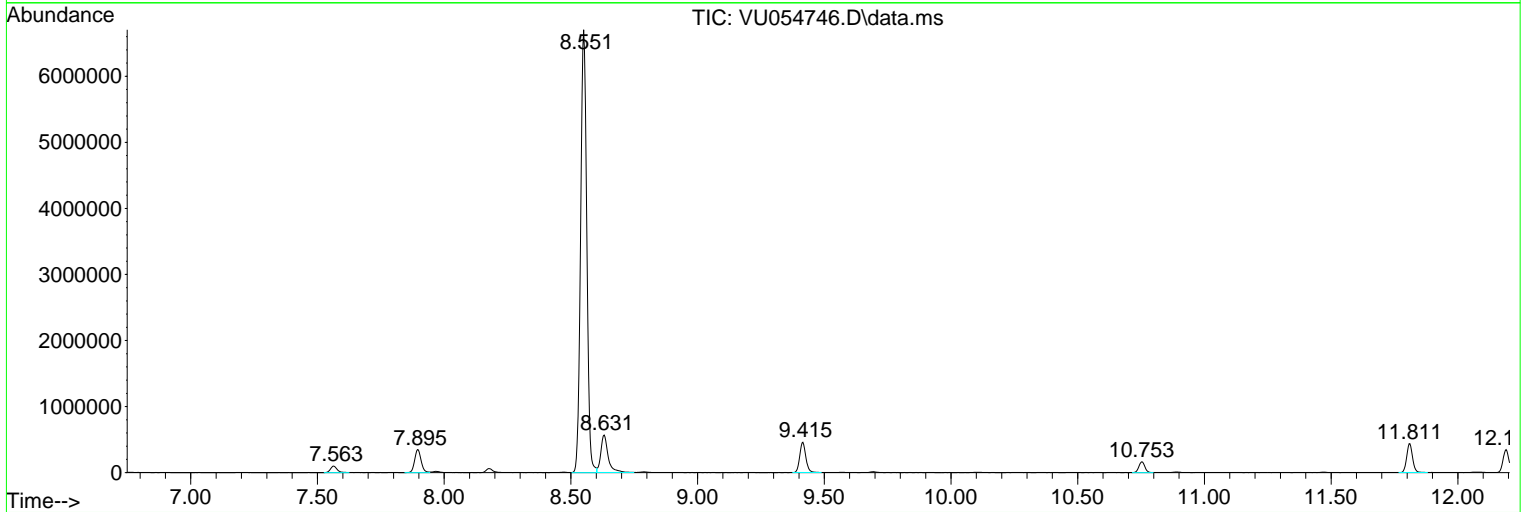
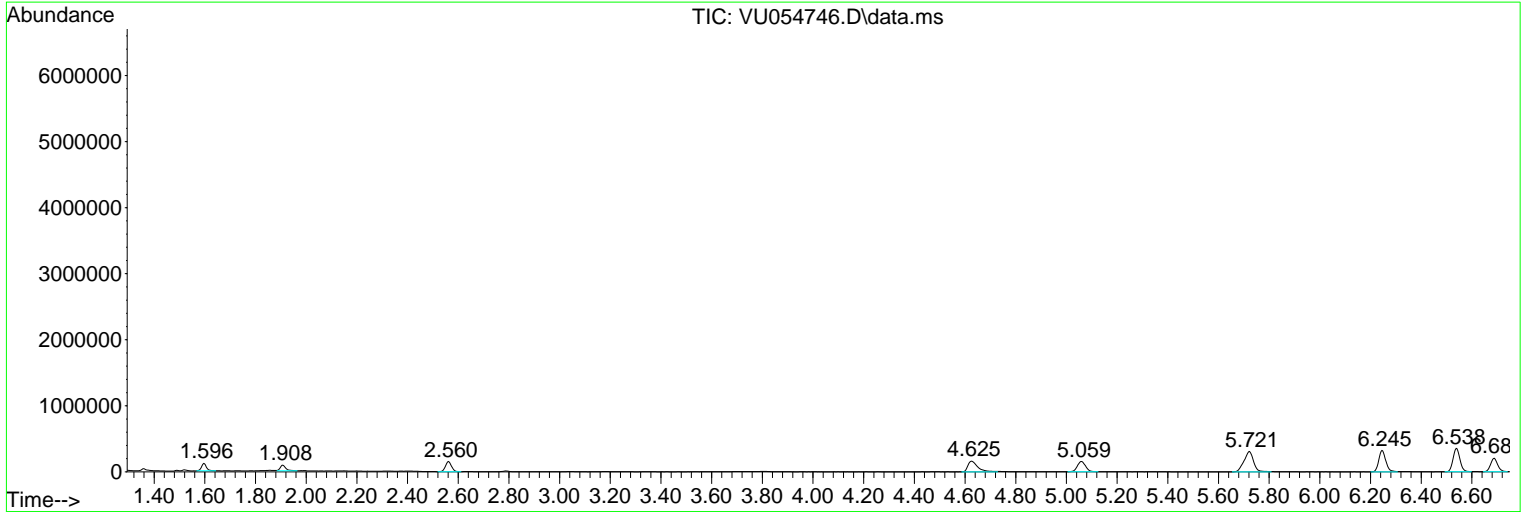
Sum of corrected areas: 19309742

Data Path : Z:\voasrv\HPCHEM1\MSVOA_U\Data\VU070323\
 Data File : VU054746.D
 Acq On : 03 Jul 2023 14:00
 Operator : MD/SY
 Sample : 03495-10
 Misc : 25.0mL/MSVOA_U/WATER
 ALS Vial : 12 Sample Multiplier: 1

Instrument :
 MSVOA_U
 ClientSampleId :
 H0FB4

Quant Method : Z:\voasrv\HPCHEM1\MSVOA_U\Method\SFAMUTR060723WMA.M
 Quant Title : TRACE VOA SFAM1.0

TIC Library : C:\Database\NIST20.L
 TIC Integration Parameters: LSCINT.P



Library Search Compound Report

Data Path : Z:\voasrv\HPCHEM1\MSVOA_U\Data\VU070323\
Data File : VU054746.D
Acq On : 03 Jul 2023 14:00
Operator : MD/SY
Sample : 03495-10
Misc : 25.0mL/MSVOA_U/WATER
ALS Vial : 12 Sample Multiplier: 1

Instrument :
MSVOA_U
ClientSampleId :
H0FB4

Quant Method : Z:\voasrv\HPCHEM1\MSVOA_U\Method\SFAMUTR060723WMA.M
Quant Title : TRACE VOA SFAM1.0

TIC Library : C:\Database\NIST20.L
TIC Integration Parameters: LSCINT.P

No Library Search Compounds Detected

Data Path : Z:\voasrv\HPCHEM1\MSVOA_U\Data\VU070323\
Data File : VU054746.D
Acq On : 03 Jul 2023 14:00
Operator : MD/SY
Sample : 03495-10
Misc : 25.0mL/MSVOA_U/WATER
ALS Vial : 12 Sample Multiplier: 1

Instrument :
MSVOA_U
ClientSampleId :
H0FB4

Quant Method : Z:\voasrv\HPCHEM1\MSVOA_U\Method\SFAMUTR060723WMA.M
Quant Title : TRACE VOA SFAM1.0

TIC Library : C:\Database\NIST0.L
TIC Integration Parameters: LSCINT.P

TIC Top Hit name	RT	EstConc	Units	Response	--Internal Standard--		
					#	RT	Resp Conc
