

Data Path : Z:\VOASRV\HPCHEM1\MSVOA U\DATA\VU070518\
 Data File : VU025213.D
 Acq On : 05 Jul 2018 14:12
 Operator : MD/SY
 Sample : J3808-03
 Misc : 5.0mL/MSVOA U/WATER
 ALS Vial : 11 Sample Multiplier: 1

Instrument :
 MSVOA_U
 Client Sampled :
 W/P021MW473-180628

Quant Time: Jul 06 05:12:42 2018
 Quant Method : Z:\VOASRV\HPCHEM1\MSVOA_U\METHOD\82U061318W.M
 Quant Title : SW846 8260
 QLast Update : Wed Jun 13 13:55:26 2018
 Response via : Initial Calibration

Internal Standards	R.T.	QIon	Response	Conc	Units	Dev(Min)
1) Pentafluorobenzene	4.99	168	223805	50.00	ug/l	0.00
34) 1,4-Difluorobenzene	5.89	114	335810	50.00	ug/l	0.00
63) Chlorobenzene-d5	9.09	117	325120	50.00	ug/l	0.00
72) 1,4-Dichlorobenzene-d4	11.49	152	180367	50.00	ug/l	0.00

System Monitoring Compounds

33) 1,2-Dichloroethane-d4	5.32	65	166447	45.56	ug/l	0.00
Spiked Amount	50.000		Recovery	=	91.12%	
35) Dibromofluoromethane	4.89	113	121009	43.42	ug/l	0.00
Spiked Amount	50.000		Recovery	=	86.84%	
50) Toluene-d8	7.57	98	493857	48.58	ug/l	0.00
Spiked Amount	50.000		Recovery	=	97.16%	
62) 4-Bromofluorobenzene	10.31	95	188851	46.79	ug/l	0.00
Spiked Amount	50.000		Recovery	=	93.58%	

Target Compounds

						Qvalue
3) Chloromethane	1.33	50	1910	0.67	ug/l	89
4) Vinyl Chloride	1.40	62	5674217	1922.48	ug/l	97
5) Bromomethane	1.64	94	760	0.53	ug/l	91
9) 1,1,2-Trichlorotrifluoroet	2.29	101	580	0.21	ug/l #	41
10) Methyl Iodide	2.42	142	741	5.57	ug/l #	79
11) Tert butyl alcohol	2.82	59	6652	7.49	ug/l #	94
12) 1,1-Dichloroethene	2.29	96	219428	86.11	ug/l	96
13) Acrolein	2.19	56	151	0.32	ug/l #	13
16) Acetone	2.32	43	11292	5.75	ug/l	96
17) Carbon Disulfide	2.48	76	9068	1.11	ug/l	99
18) Methyl Acetate	2.62	43	924	0.22	ug/l #	53
20) Methylene Chloride	2.71	84	5109	1.66	ug/l	97
21) trans-1,2-Dichloroethene	2.99	96	506619	180.50	ug/l	98
24) 1,1-Dichloroethane	3.45	63	44553	8.26	ug/l	99
25) 2-Butanone	4.25	43	1480	0.56	ug/l #	1
30) Chloroform	4.68	83	58335	10.68	ug/l	97
31) Cyclohexane	4.99	56	12592	0.68	ug/l #	64
36) 1,1-Dichloropropene	4.99	75	16537	4.19	ug/l #	52
38) Carbon Tetrachloride	4.99	117	21631	4.98	ug/l #	16
39) Methylcyclohexane	6.23	83	642445	130.46	ug/l #	1
40) Benzene	5.40	78	230267	20.48	ug/l	100
41) Methacrylonitrile	4.65	41	601	0.26	ug/l #	43
42) 1,2-Dichloroethane	5.41	62	11242	2.63	ug/l	99
45) 1,2-Dichloropropane	6.22	63	155062	51.68	ug/l #	1
49) 1,4-Dioxane	6.63	88	163	2.30	ug/l #	12
51) 4-Methyl-2-Pentanone	7.46	43	8984	1.92	ug/l	98
52) Toluene	7.64	92	174448	24.12	ug/l	99
53) t-1,3-Dichloropropene	7.64	75	2133	0.45	ug/l #	1
55) 1,1,2-Trichloroethane	8.07	97	47215	16.06	ug/l	96
59) 2-Hexanone	8.17	43	39377	10.33	ug/l	76
60) Dibromochloromethane	8.23	129	6755	1.84	ug/l #	11
64) Tetrachloroethene	8.23	164	7183	2.32	ug/l	97
65) Chlorobenzene	9.12	112	192747	23.21	ug/l	97
67) Ethyl Benzene	9.26	91	40268	2.77	ug/l	99

Data Path : Z:\VOASRV\HPCHEM1\MSVOA U\DATA\VU070518\
 Data File : VU025213.D
 Acq On : 05 Jul 2018 14:12
 Operator : MD/SY
 Sample : J3808-03
 Misc : 5.0mL/MSVOA U/WATER
 ALS Vial : 11 Sample Multiplier: 1

Instrument :
 MSVOA_U
 ClientSampleId :
 W/P021MW473-180628

Quant Time: Jul 06 05:12:42 2018
 Quant Method : Z:\VOASRV\HPCHEM1\MSVOA_U\METHOD\82U061318W.M
 Quant Title : SW846 8260
 QLast Update : Wed Jun 13 13:55:26 2018
 Response via : Initial Calibration

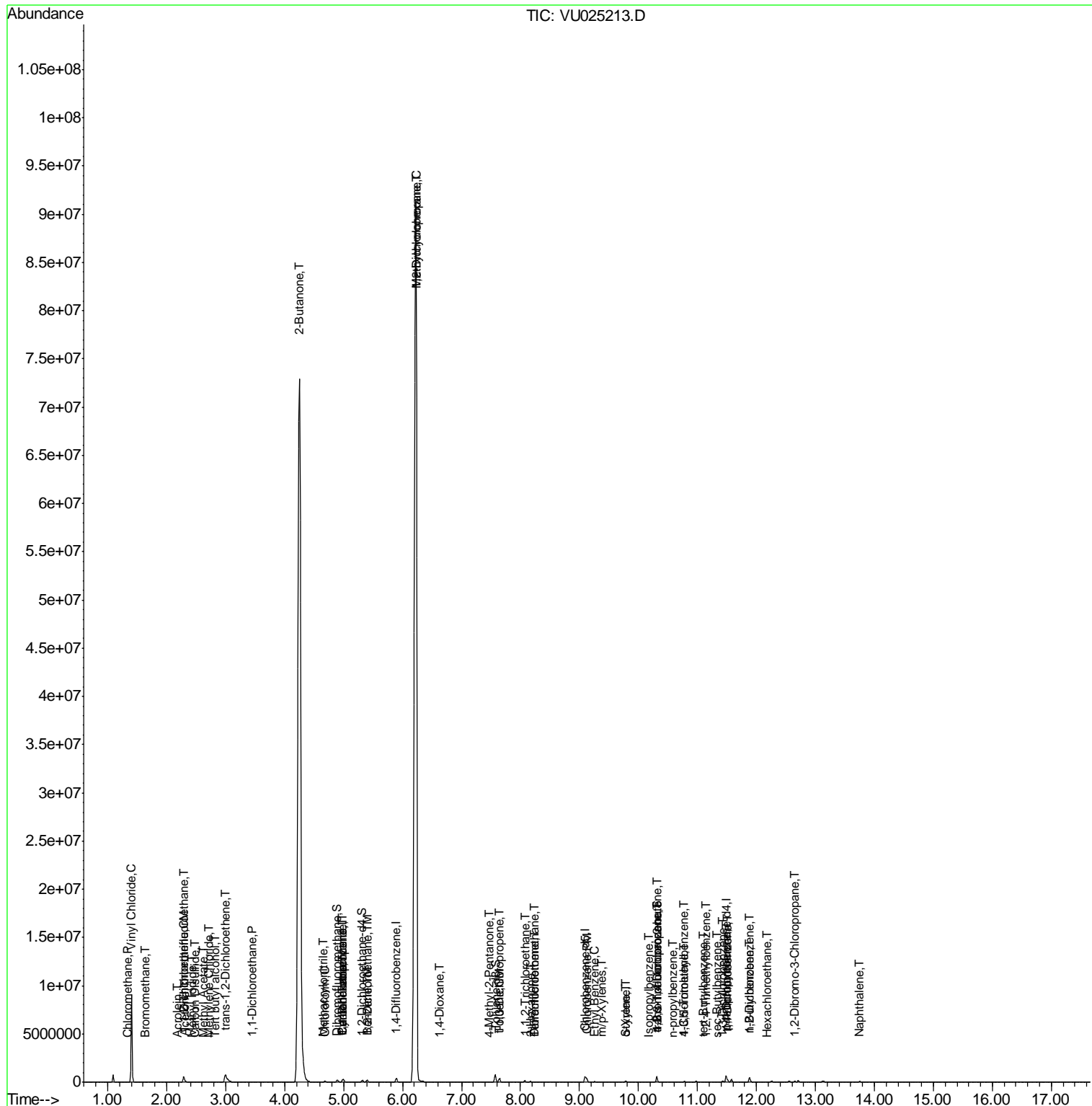
Internal Standards	R.T.	QIon	Response	Conc	Units	Dev(Min)
68) m/p-Xylenes	9.38	106	7894	1.41	ug/l	92
69) o-Xylene	9.78	106	23266	4.20	ug/l	97
70) Styrene	9.80	104	5737	0.63	ug/l #	34
73) Isopropylbenzene	10.17	105	9613	0.69	ug/l	99
76) 1,2,3-Trichloropropane	10.31	75	96778	24.37	ug/l #	35
78) n-propylbenzene	10.59	91	7818	0.48	ug/l	96
80) 1,3,5-Trimethylbenzene	10.78	105	47797	3.98	ug/l	98
81) trans-1,4-Dichloro-2-buten	10.31	75	96778	56.40	ug/l #	100
82) 4-Chlorotoluene	10.78	91	5467	0.49	ug/l #	45
83) tert-Butylbenzene	11.10	119	11515	1.00	ug/l	86
84) 1,2,4-Trimethylbenzene	11.15	105	6276	0.51	ug/l	92
85) sec-Butylbenzene	11.33	105	11922	0.82	ug/l	97
86) p-Isopropyltoluene	11.48	119	9147	0.71	ug/l	90
87) 1,3-Dichlorobenzene	11.42	146	25252	3.90	ug/l	99
88) 1,4-Dichlorobenzene	11.51	146	54304	8.33	ug/l	95
89) n-Butylbenzene	11.88	91	12243	1.07	ug/l #	1
90) Hexachloroethane	12.18	117	2090	0.83	ug/l #	8
91) 1,2-Dichlorobenzene	11.88	146	165817	25.56	ug/l	100
92) 1,2-Dibromo-3-Chloropropan	12.66	75	428	0.33	ug/l #	3
95) Naphthalene	13.75	128	80285	6.65	ug/l	98

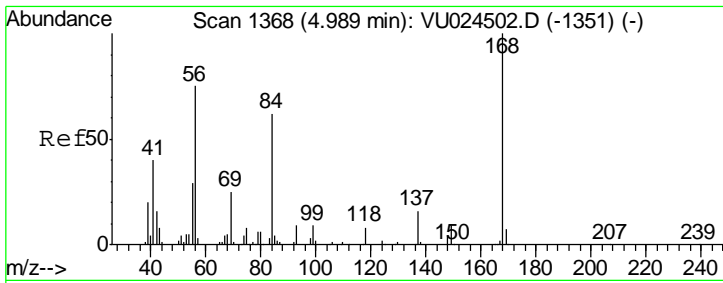
(#) = qualifier out of range (m) = manual integration (+) = signals summed

Data Path : Z:\VOASRV\HPCHEM1\MSVOA U\DATA\VU070518\
 Data File : VU025213.D
 Acq On : 05 Jul 2018 14:12
 Operator : MD/SY
 Sample : J3808-03
 Misc : 5.0mL/MSVOA U/WATER
 ALS Vial : 11 Sample Multiplier: 1

Instrument :
 MSVOA_U
 Client Sample ID :
 W/P021MW473-180628

Quant Time: Jul 06 05:12:42 2018
 Quant Method : Z:\VOASRV\HPCHEM1\MSVOA_U\METHOD\82U061318W.M
 Quant Title : SW846 8260
 QLast Update : Wed Jun 13 13:55:26 2018
 Response via : Initial Calibration

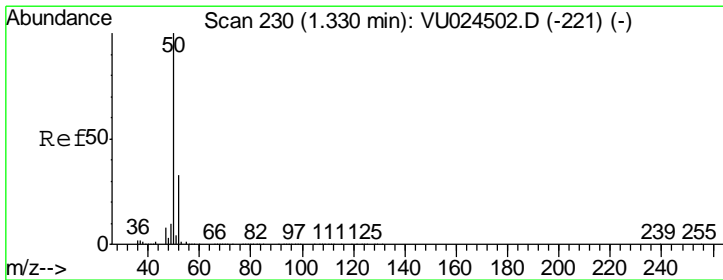
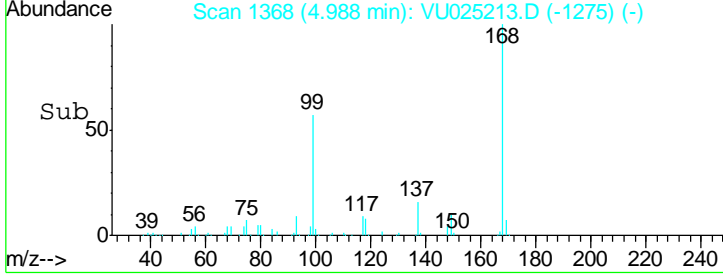
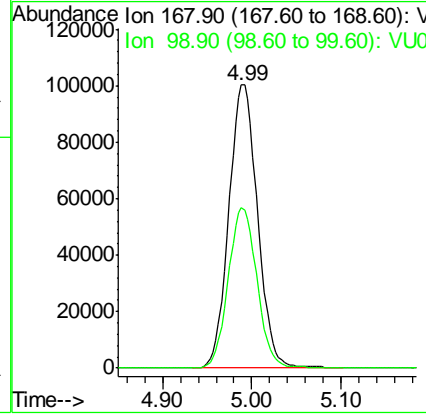
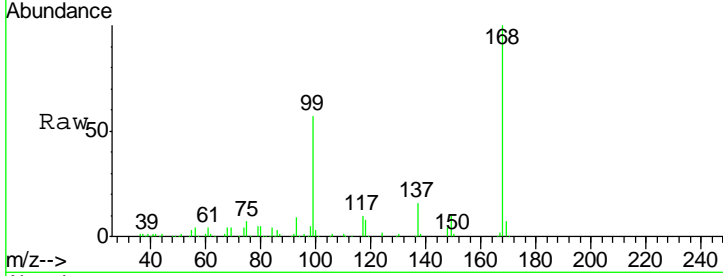




#1
 Pentafluorobenzene
 Concen: 50.00 ug/l
 RT: 4.99 min Scan# 1368
 Delta R.T. -0.00 min
 Lab File: VU025213.D
 Acq: 05 Jul 2018 14:12

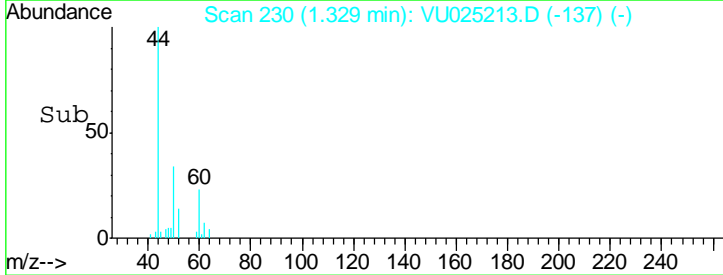
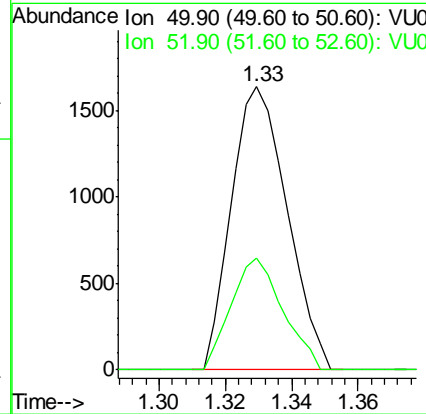
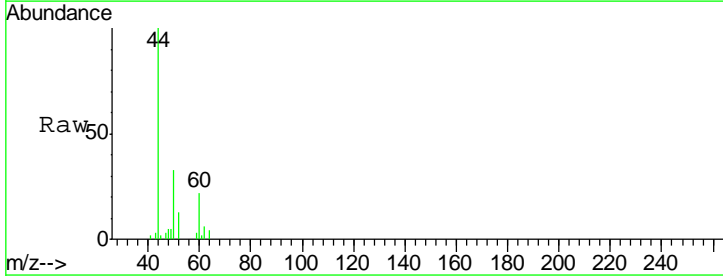
Instrument : MSVOA_U
 ClientSampleId : WPO21MW473-180628

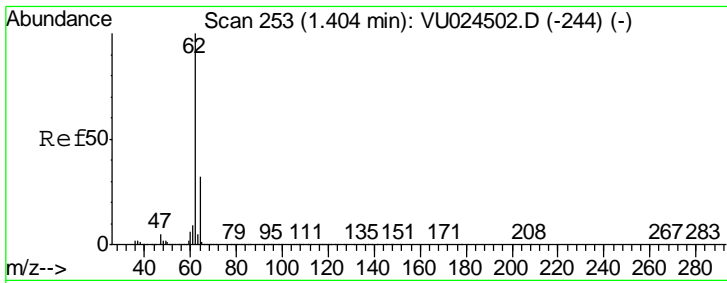
Tgt Ion: 168 Resp: 223805
 Ion Ratio Lower Upper
 168 100
 99 56.8 43.2 64.8



#3
 Chloromethane
 Concen: 0.67 ug/l
 RT: 1.33 min Scan# 230
 Delta R.T. -0.00 min
 Lab File: VU025213.D
 Acq: 05 Jul 2018 14:12

Tgt Ion: 50 Resp: 1910
 Ion Ratio Lower Upper
 50 100
 52 39.3 26.4 39.6

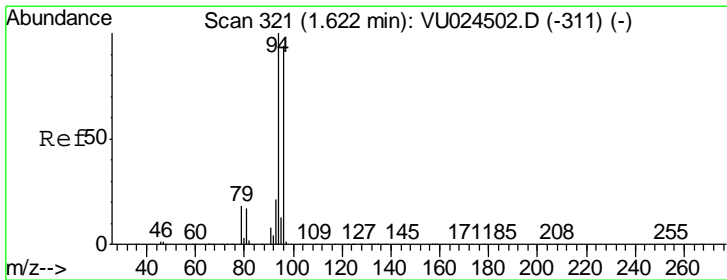
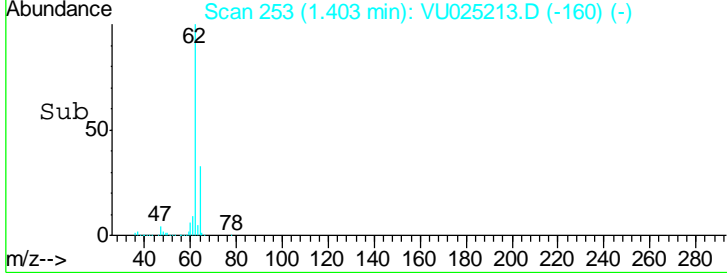
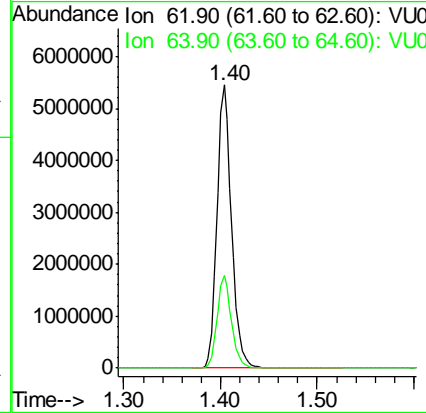
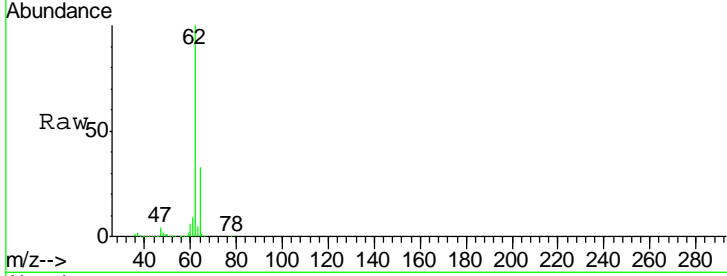




#4
 Vinyl Chloride
 Concen: 1922.48 ug/l
 RT: 1.40 min Scan# 253
 Delta R.T. -0.00 min
 Lab File: VU025213.D
 Acq: 05 Jul 2018 14:12

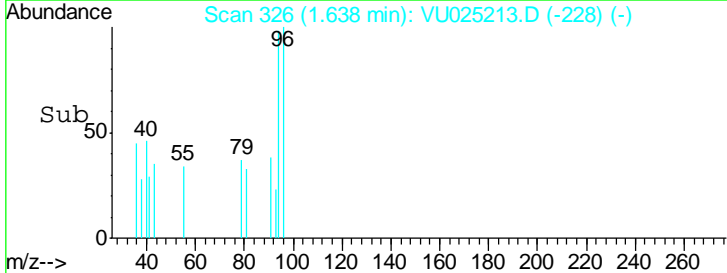
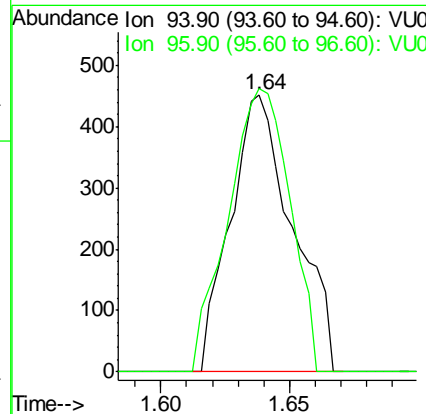
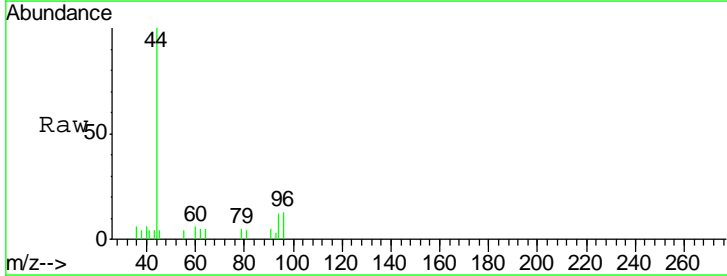
Instrument : MSVOA_U
 ClientSampleId : WPO21MW473-180628

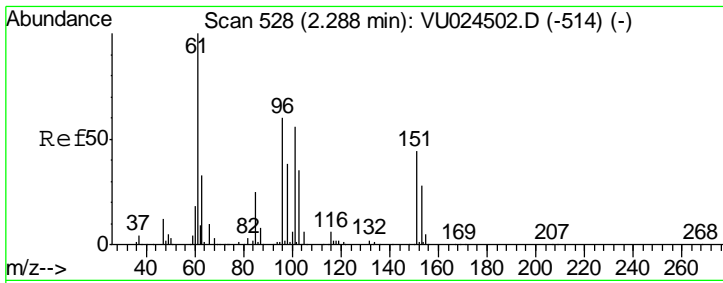
Tgt Ion	Resp	Lower	Upper
62	100		
64	32.5	24.8	37.2



#5
 Bromomethane
 Concen: 0.53 ug/l
 RT: 1.64 min Scan# 326
 Delta R.T. 0.02 min
 Lab File: VU025213.D
 Acq: 05 Jul 2018 14:12

Tgt Ion	Resp	Lower	Upper
94	100		
96	102.2	74.5	111.7

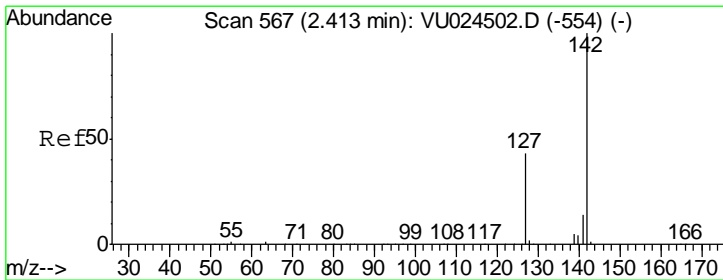
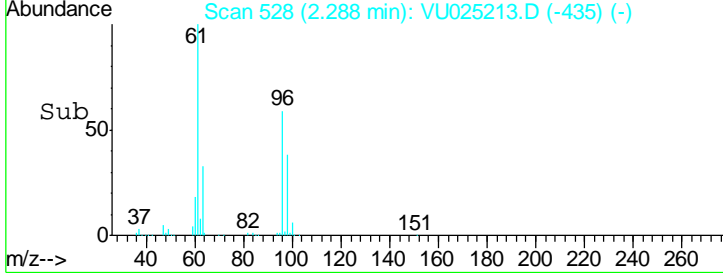
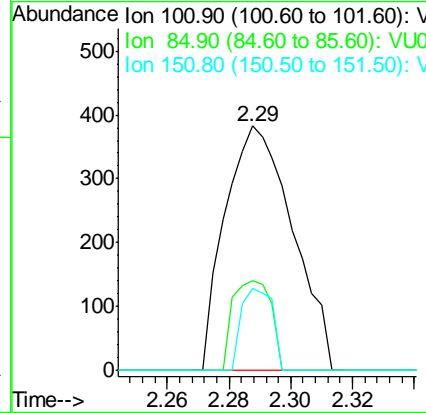
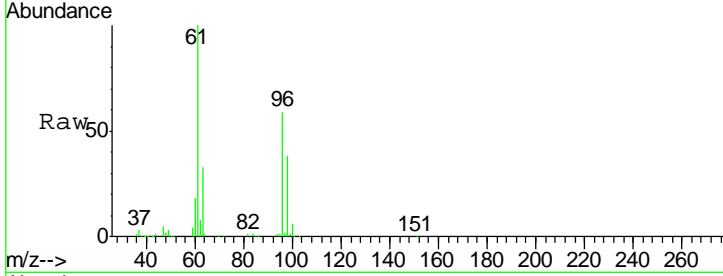




#9
 1,1,2-Trichlorotrifluoroethane
 Concen: 0.21 ug/l
 RT: 2.29 min Scan# 528
 Delta R.T. -0.00 min
 Lab File: VU025213.D
 Acq: 05 Jul 2018 14:12

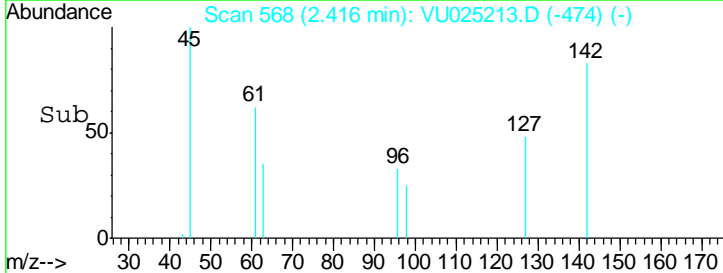
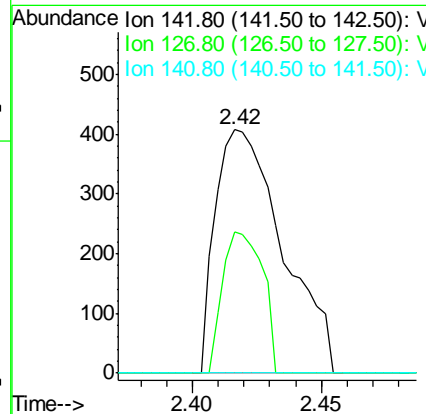
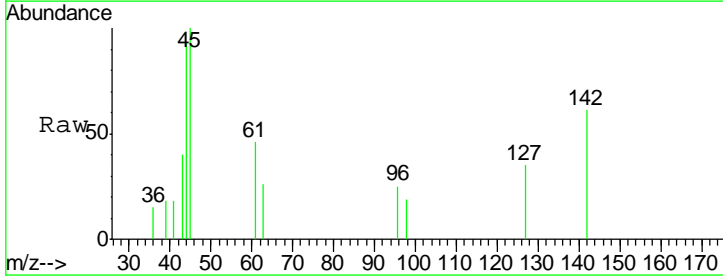
Instrument :
 MSVOA_U
 ClientSampleId :
 WPO21MW473-180628

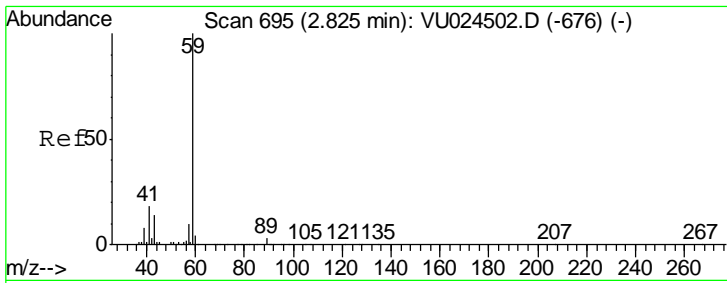
Tgt Ion	Resp	Lower	Upper
101	580		
101	100		
85	20.7	36.0	54.0#
151	15.3	62.3	93.5#



#10
 Methyl Iodide
 Concen: 5.57 ug/l
 RT: 2.42 min Scan# 568
 Delta R.T. 0.00 min
 Lab File: VU025213.D
 Acq: 05 Jul 2018 14:12

Tgt Ion	Resp	Lower	Upper
142	741		
142	100		
127	34.3	35.6	53.4#
141	0.0	11.7	17.5#

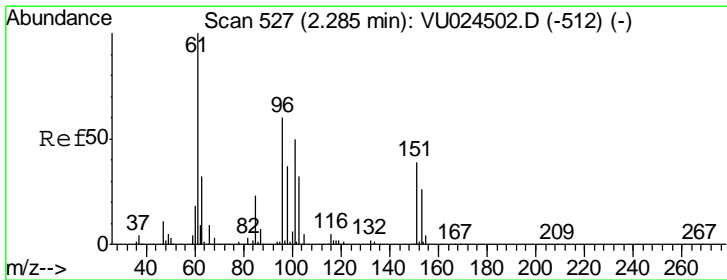
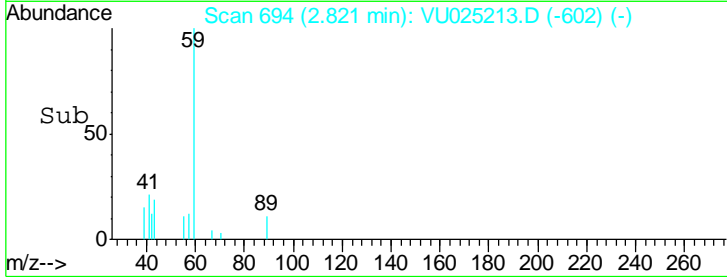
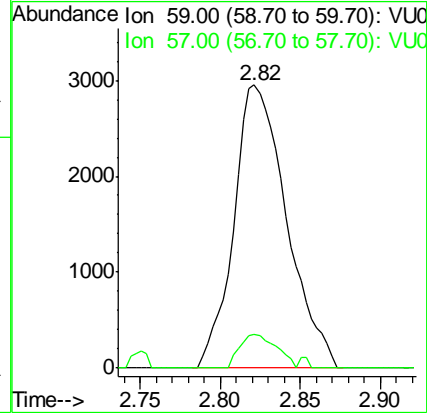
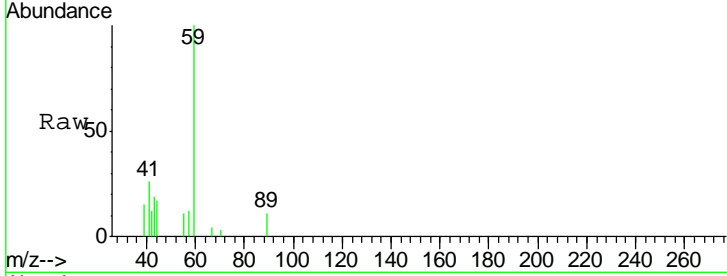




#11
 Tert butyl alcohol
 Concen: 7.49 ug/l
 RT: 2.82 min Scan# 694
 Delta R.T. -0.00 min
 Lab File: VU025213.D
 Acq: 05 Jul 2018 14:12

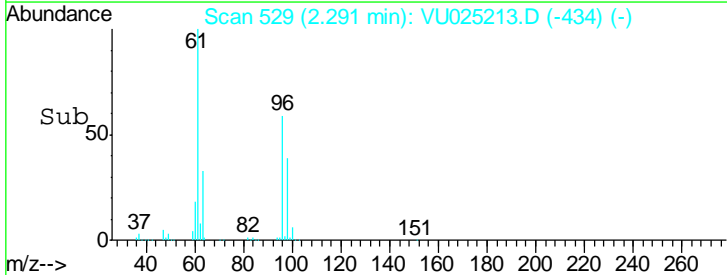
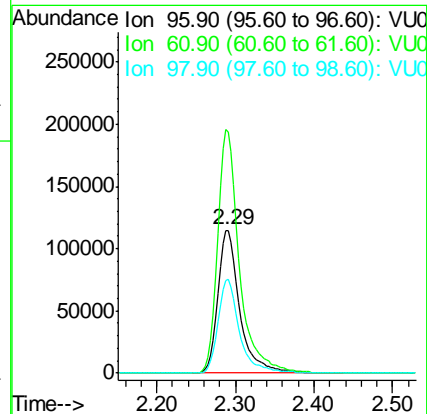
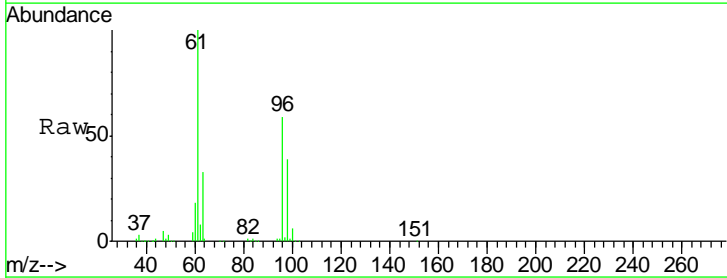
Instrument :
 MSVOA_U
 ClientSampleId :
 WPO21MW473-180628

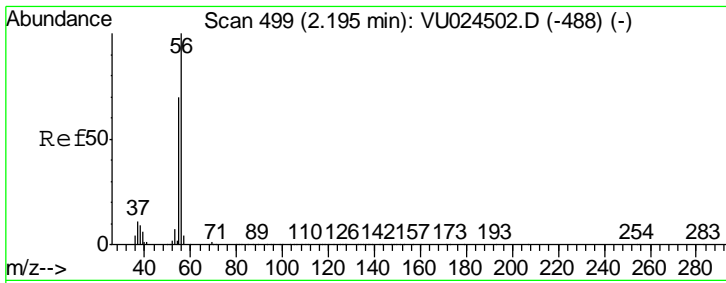
Tgt Ion	Resp	Lower	Upper
59	100		
57	8.3	8.5	12.7#



#12
 1,1-Dichloroethene
 Concen: 86.11 ug/l
 RT: 2.29 min Scan# 529
 Delta R.T. 0.01 min
 Lab File: VU025213.D
 Acq: 05 Jul 2018 14:12

Tgt Ion	Resp	Lower	Upper
96	100		
61	169.3	141.7	212.5
98	65.4	51.6	77.4

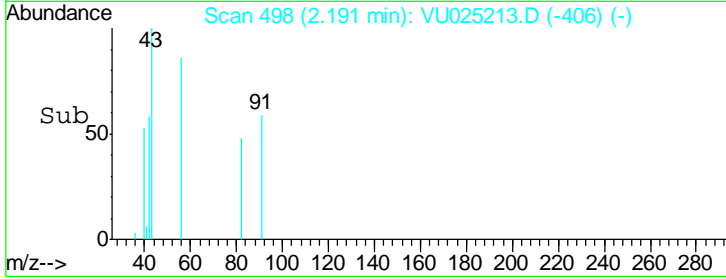
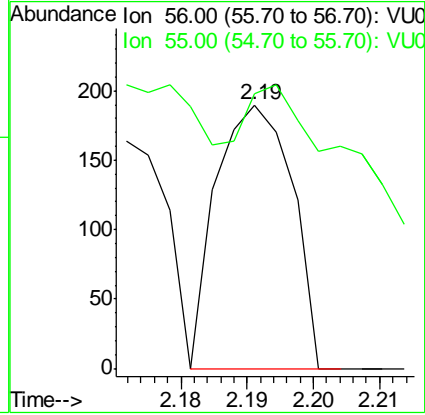
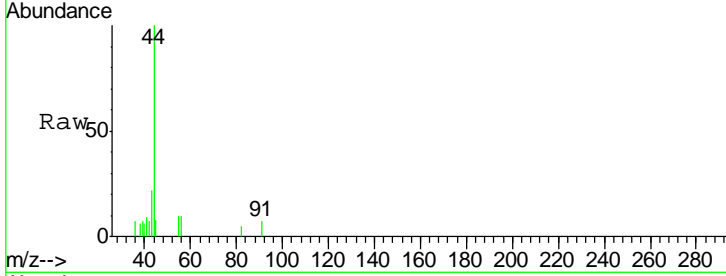




#13
 Acrolein
 Concen: 0.32 ug/l
 RT: 2.19 min Scan# 498
 Delta R.T. -0.00 min
 Lab File: VU025213.D
 Acq: 05 Jul 2018 14:12

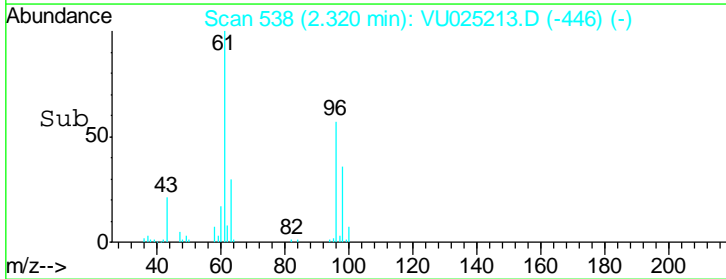
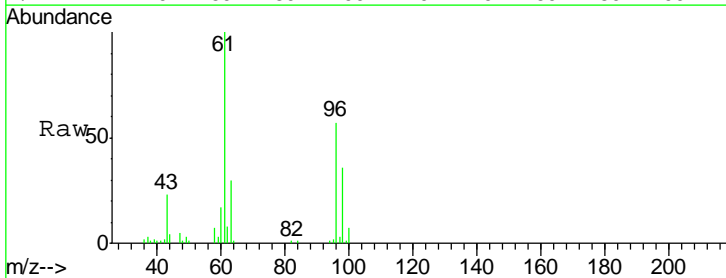
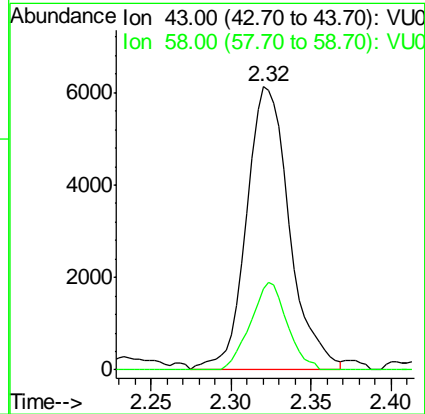
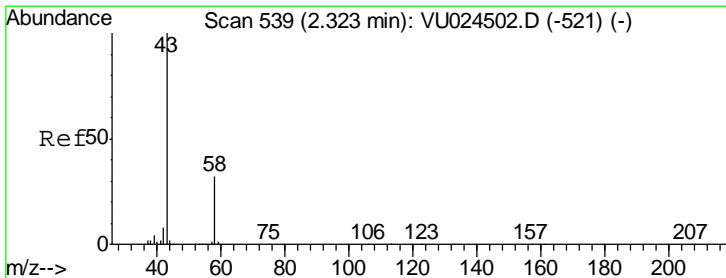
Instrument : MSVOA_U
 ClientSampleId : WPO21MW473-180628

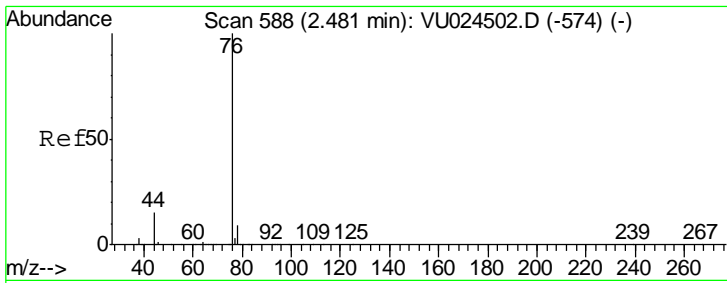
Tgt Ion	Resp	Lower	Upper
56	151		
55	0.0	58.4	87.6#



#16
 Acetone
 Concen: 5.75 ug/l
 RT: 2.32 min Scan# 538
 Delta R.T. -0.00 min
 Lab File: VU025213.D
 Acq: 05 Jul 2018 14:12

Tgt Ion	Resp	Lower	Upper
43	11292		
58	28.5	24.4	36.6

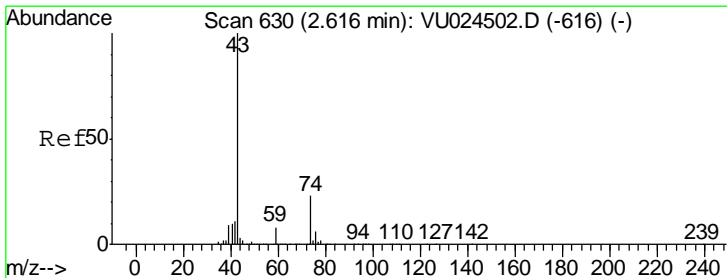
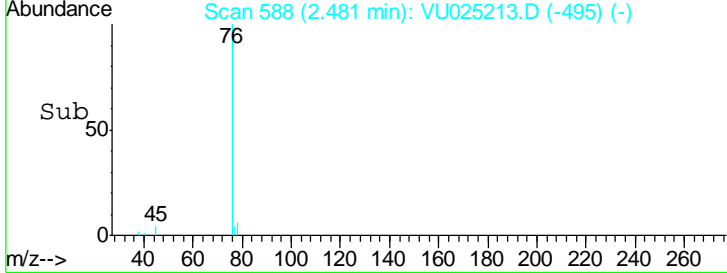
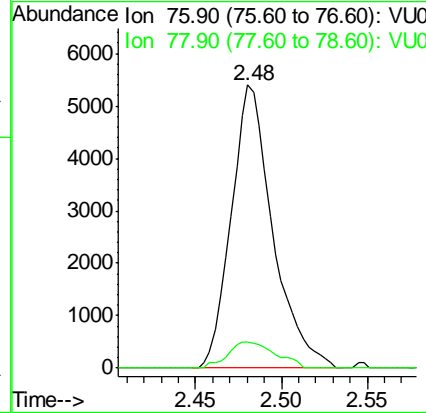
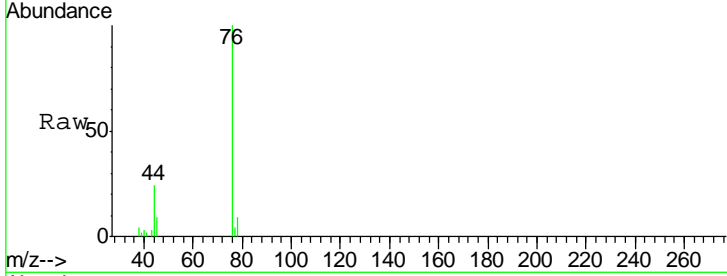




#17
 Carbon Disulfide
 Concen: 1.11 ug/l
 RT: 2.48 min Scan# 588
 Delta R.T. -0.00 min
 Lab File: VU025213.D
 Acq: 05 Jul 2018 14:12

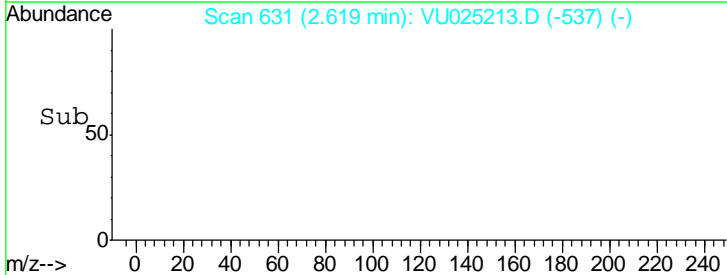
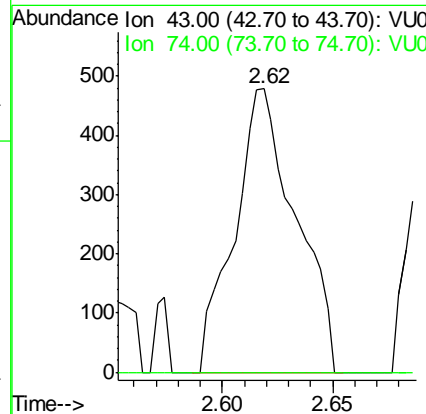
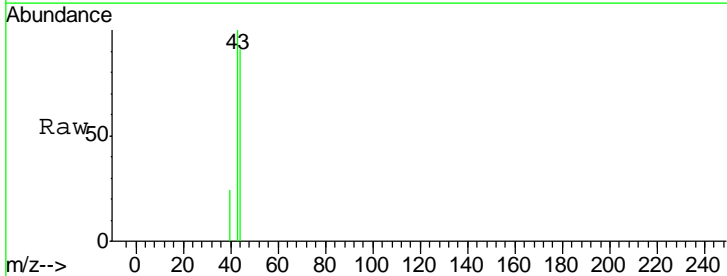
Instrument :
 MSVOA_U
ClientSampled :
 W/P021MW473-180628

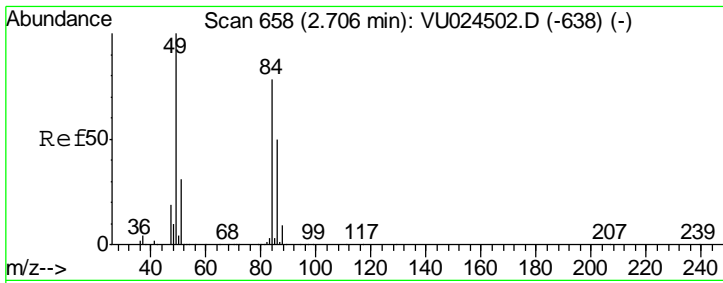
Tgt Ion	Resp	Lower	Upper
76	100		
78	9.3	7.1	10.7



#18
 Methyl Acetate
 Concen: 0.22 ug/l
 RT: 2.62 min Scan# 631
 Delta R.T. 0.00 min
 Lab File: VU025213.D
 Acq: 05 Jul 2018 14:12

Tgt Ion	Resp	Lower	Upper
43	100		
74	0.0	18.0	27.0#

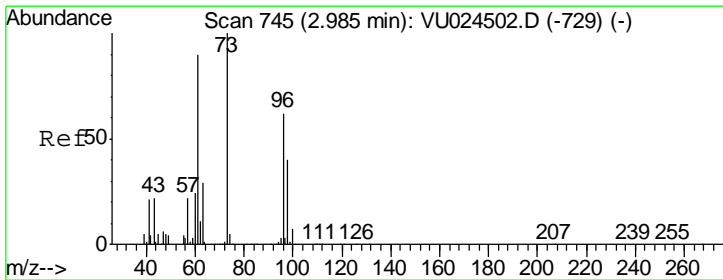
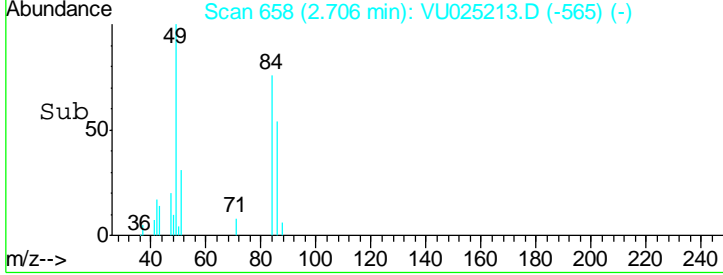
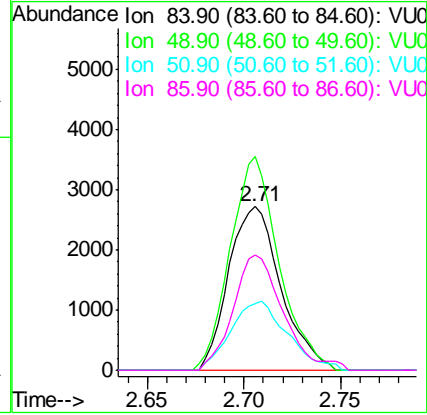
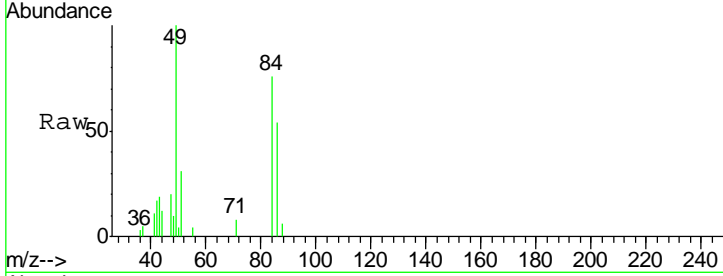




#20
 Methylene Chloride
 Concen: 1.66 ug/l
 RT: 2.71 min Scan# 658
 Delta R.T. -0.00 min
 Lab File: VU025213.D
 Acq: 05 Jul 2018 14:12

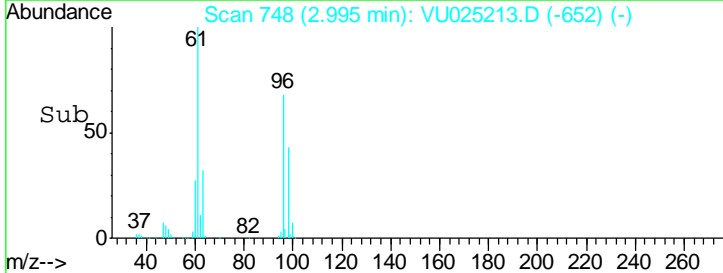
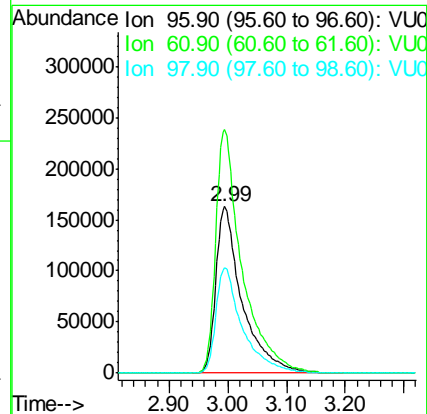
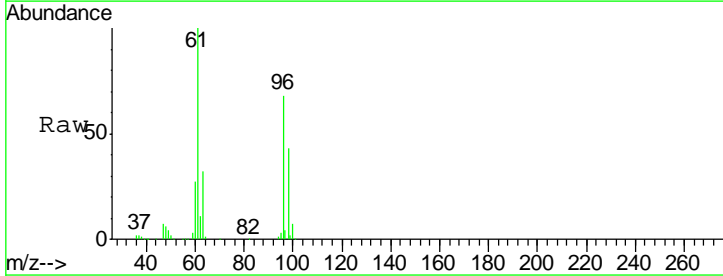
Instrument :
 MSVOA_U
ClientSampled :
 WPO21MW473-180628

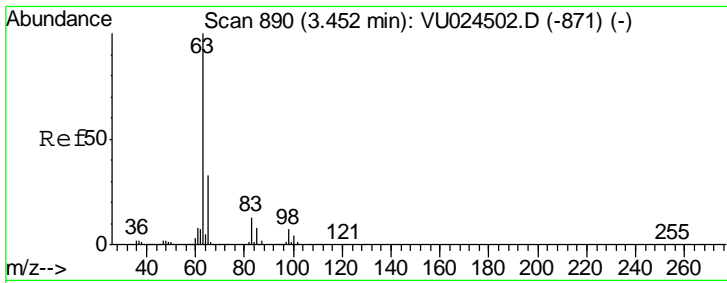
Tgt Ion	Resp	Lower	Upper
84	5109		
49	130.8	103.8	155.8
51	40.9	32.0	48.0
86	70.9	51.6	77.4



#21
 trans-1,2-Dichloroethene
 Concen: 180.50 ug/l
 RT: 2.99 min Scan# 748
 Delta R.T. 0.01 min
 Lab File: VU025213.D
 Acq: 05 Jul 2018 14:12

Tgt Ion	Resp	Lower	Upper
96	506619		
61	146.4	119.4	179.0
98	63.7	51.1	76.7

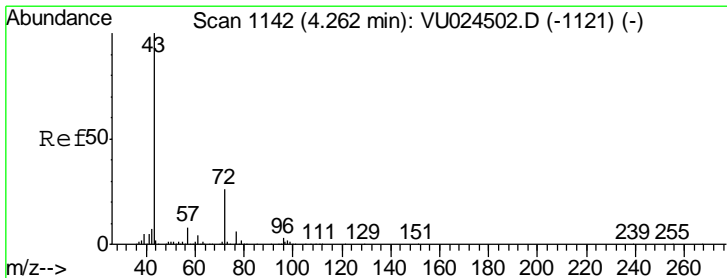
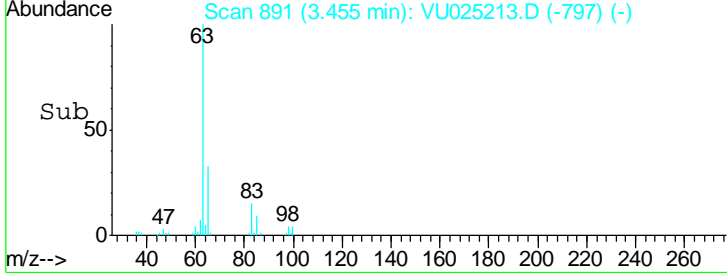
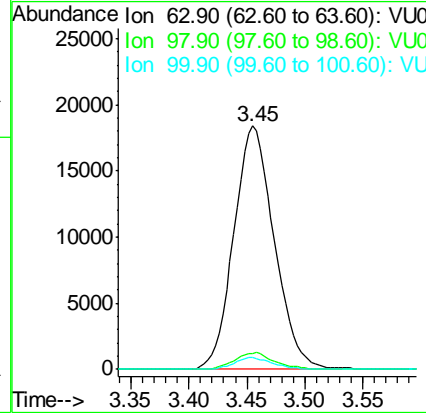
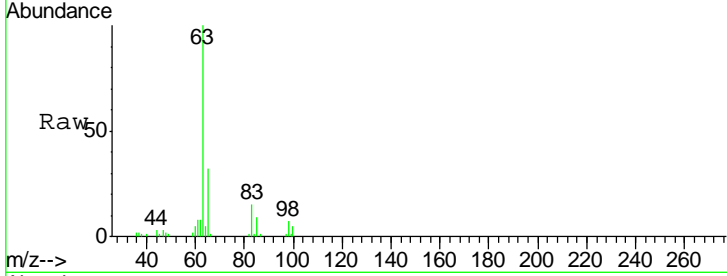




#24
 1,1-Dichloroethane
 Concen: 8.26 ug/l
 RT: 3.45 min Scan# 891
 Delta R.T. 0.00 min
 Lab File: VU025213.D
 Acq: 05 Jul 2018 14:12

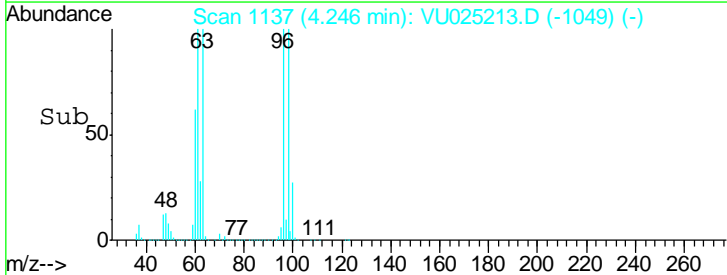
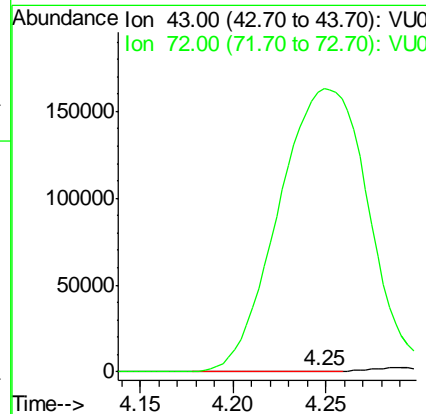
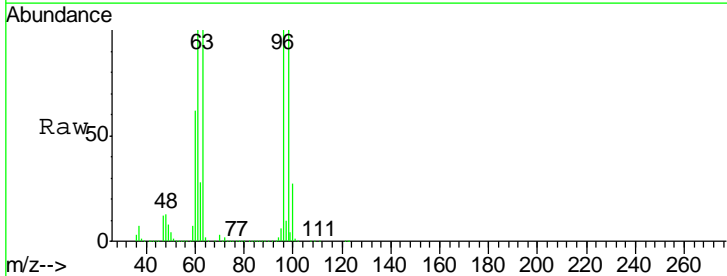
Instrument :
 MSVOA_U
ClientSampleId :
 WPO21MW473-180628

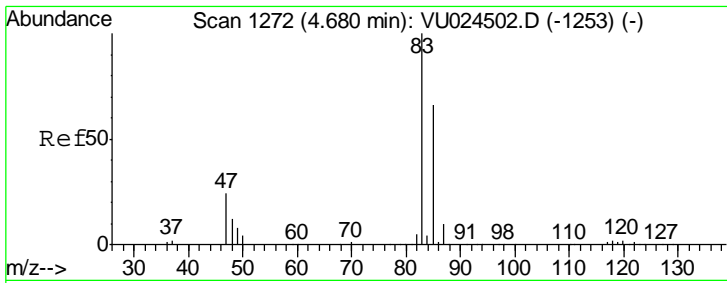
Tgt Ion	Resp	Lower	Upper
63	44553		
98	6.7	3.5	10.4
100	4.7	1.8	5.5



#25
 2-Butanone
 Concen: 0.56 ug/l
 RT: 4.25 min Scan# 1137
 Delta R.T. -0.02 min
 Lab File: VU025213.D
 Acq: 05 Jul 2018 14:12

Tgt Ion	Resp	Lower	Upper
43	1480		
72	28594.5	19.6	29.4#

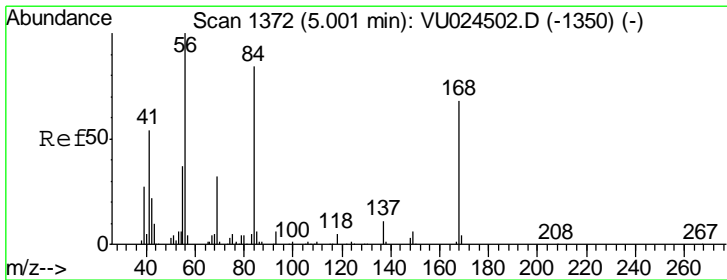
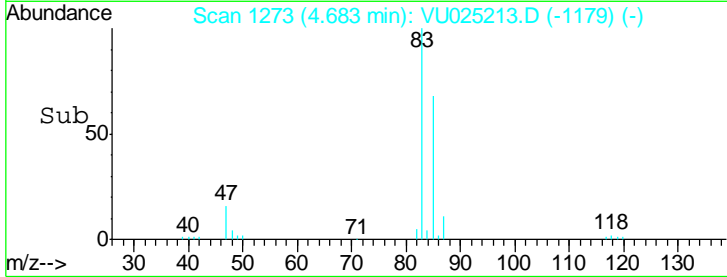
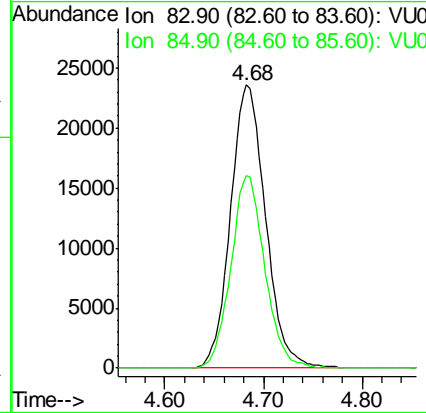
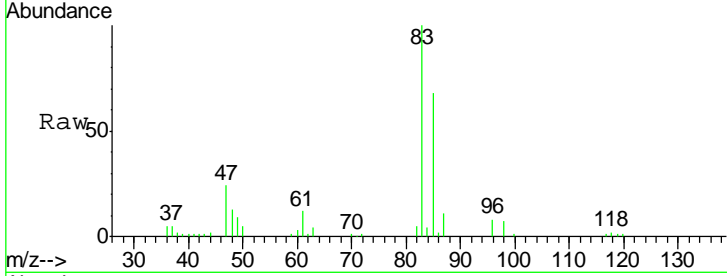




#30
 Chloroform
 Concen: 10.68 ug/l
 RT: 4.68 min Scan# 1273
 Delta R.T. 0.00 min
 Lab File: VU025213.D
 Acq: 05 Jul 2018 14:12

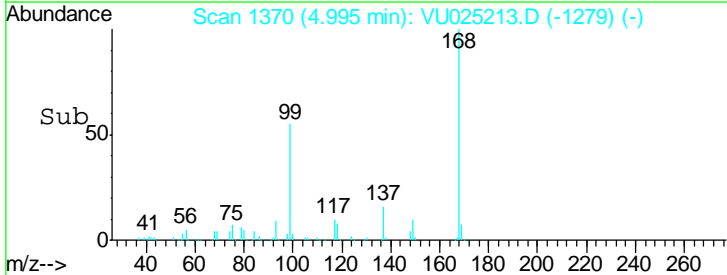
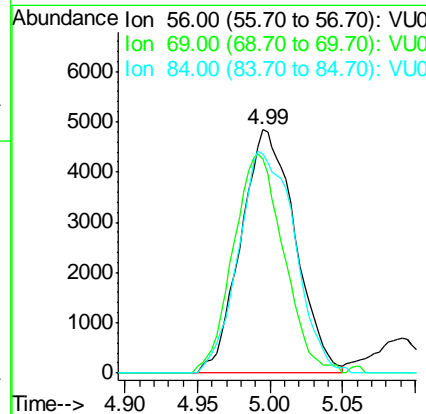
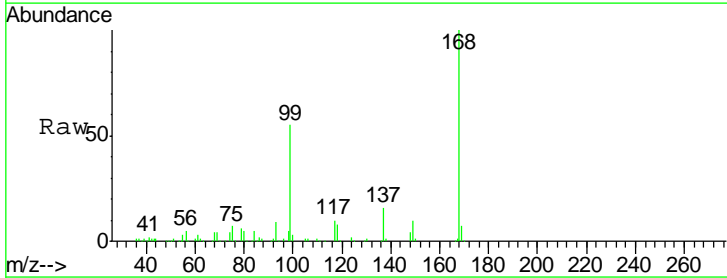
Instrument :
 MSVOA_U
ClientSampled :
 WPO21MW473-180628

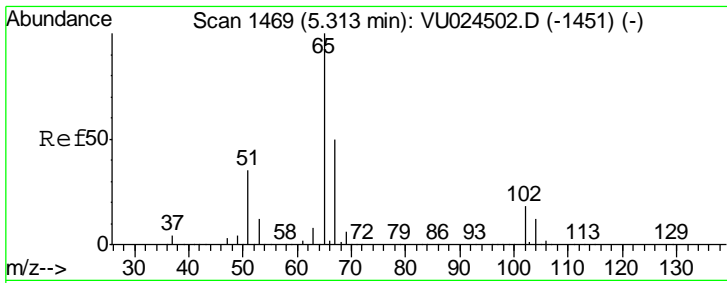
Tgt Ion	Resp	Lower	Upper
83	58335		
85	67.9	52.4	78.6



#31
 Cyclohexane
 Concen: 0.68 ug/l
 RT: 4.99 min Scan# 1370
 Delta R.T. -0.01 min
 Lab File: VU025213.D
 Acq: 05 Jul 2018 14:12

Tgt Ion	Resp	Lower	Upper
56	12592		
69	87.8	24.8	37.2#
84	90.1	65.2	97.8

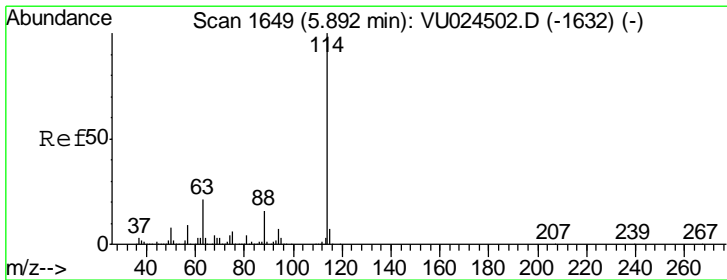
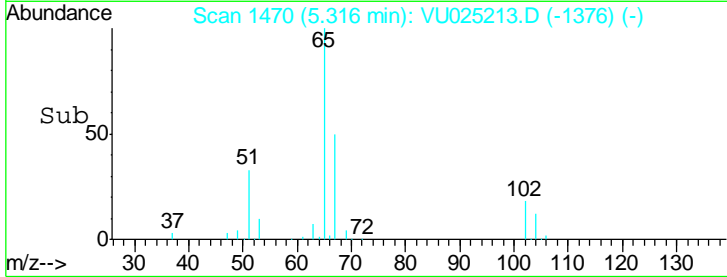
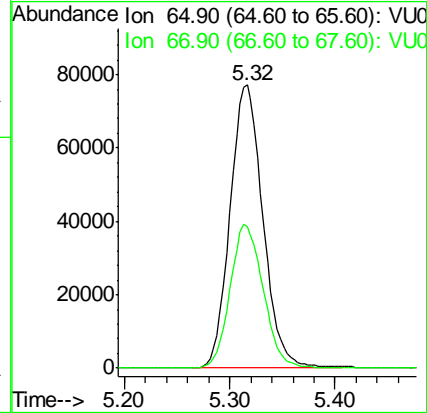
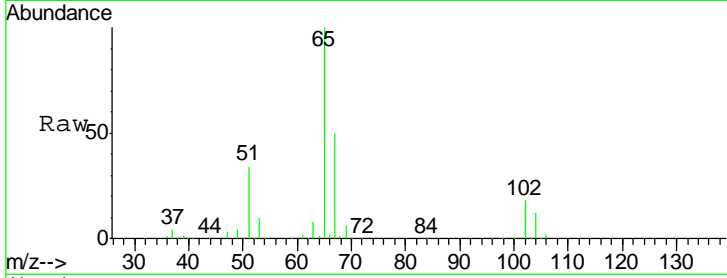




#33
 1,2-Dichloroethane-d4
 Concen: 45.56 ug/l
 RT: 5.32 min Scan# 1470
 Delta R.T. 0.00 min
 Lab File: VU025213.D
 Acq: 05 Jul 2018 14:12

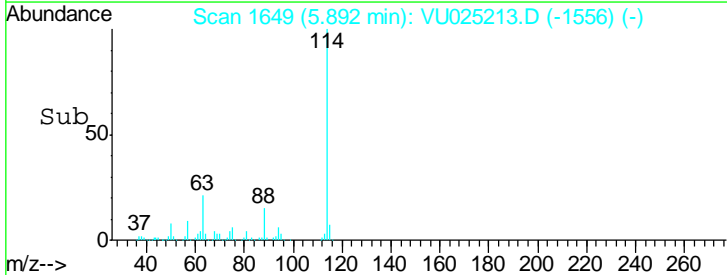
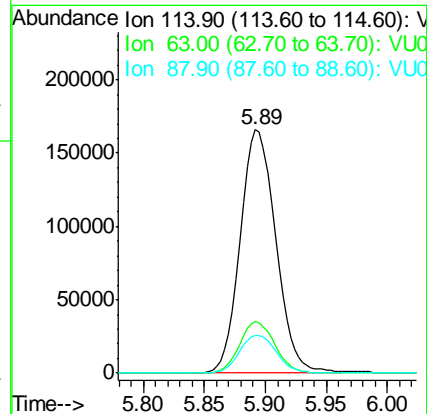
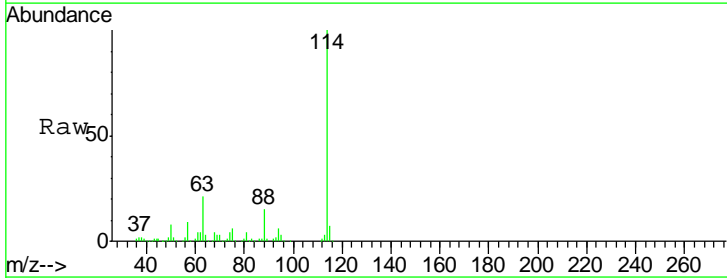
Instrument :
 MSVOA_U
 ClientSampleId :
 WPO21MW473-180628

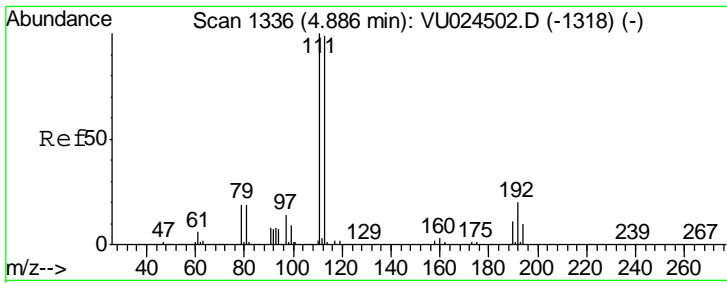
Tgt Ion	Resp	Lower	Upper
65	166447		
67	51.1	0.0	107.0



#34
 1,4-Difluorobenzene
 Concen: 50.00 ug/l
 RT: 5.89 min Scan# 1649
 Delta R.T. -0.00 min
 Lab File: VU025213.D
 Acq: 05 Jul 2018 14:12

Tgt Ion	Resp	Lower	Upper
114	335810		
63	21.0	0.0	45.4
88	15.2	0.0	31.0

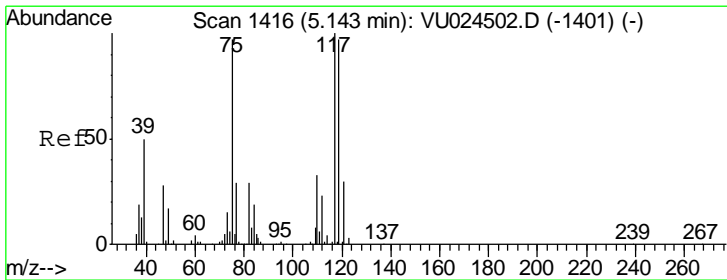
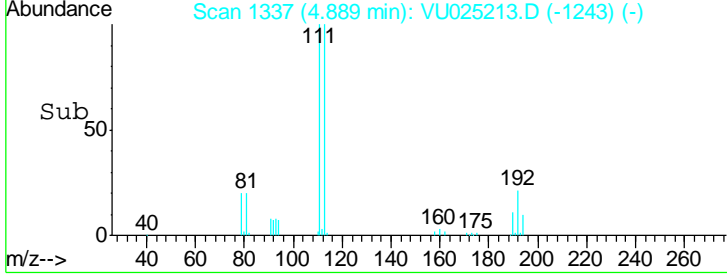
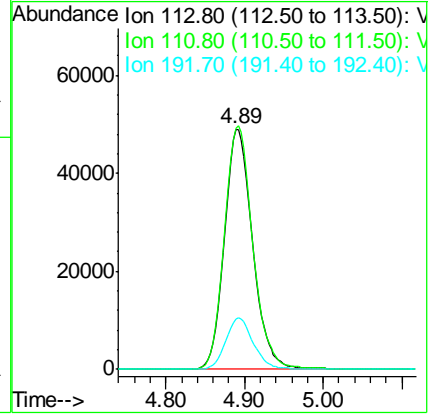
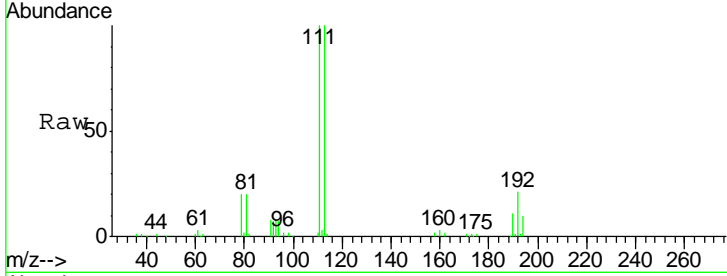




#35
 Dibromofluoromethane
 Concen: 43.42 ug/l
 RT: 4.89 min Scan# 1337
 Delta R.T. 0.00 min
 Lab File: VU025213.D
 Acq: 05 Jul 2018 14:12

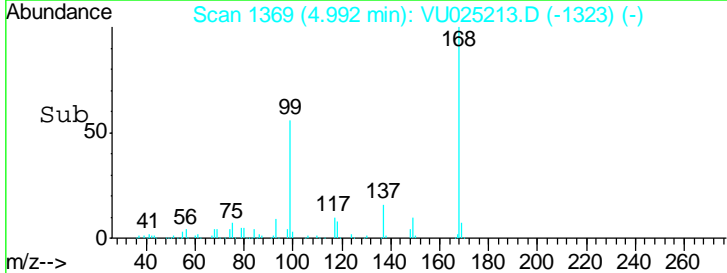
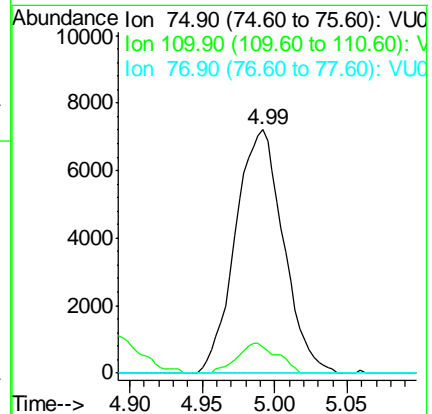
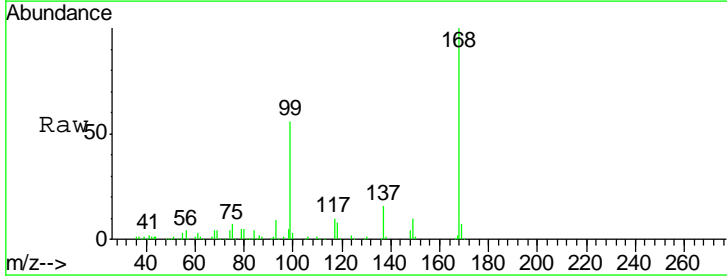
Instrument :
 MSVOA_U
ClientSampleId :
 WPO21MW473-180628

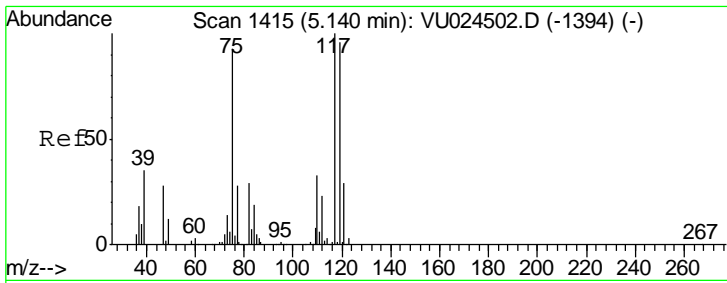
Tgt Ion	Resp	Lower	Upper
113	100		
111	101.8	82.2	123.4
192	21.0	16.2	24.4



#36
 1,1-Dichloropropene
 Concen: 4.19 ug/l
 RT: 4.99 min Scan# 1369
 Delta R.T. -0.15 min
 Lab File: VU025213.D
 Acq: 05 Jul 2018 14:12

Tgt Ion	Resp	Lower	Upper
75	100		
110	10.2	17.0	50.9#
77	0.0	24.2	36.4#

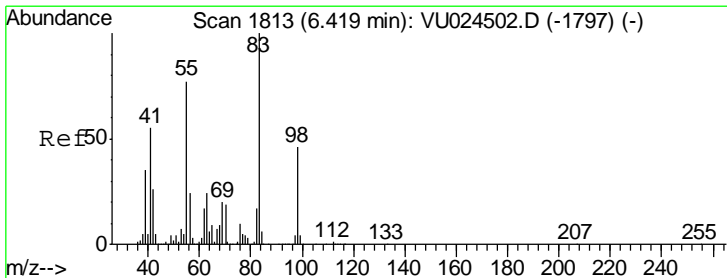
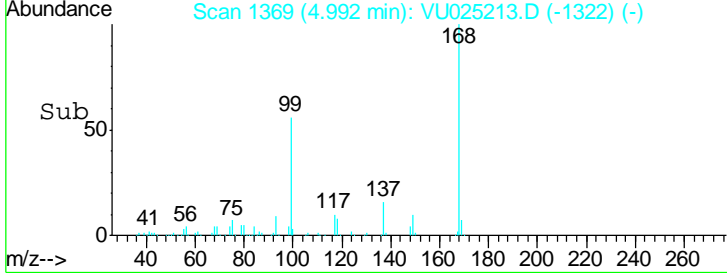
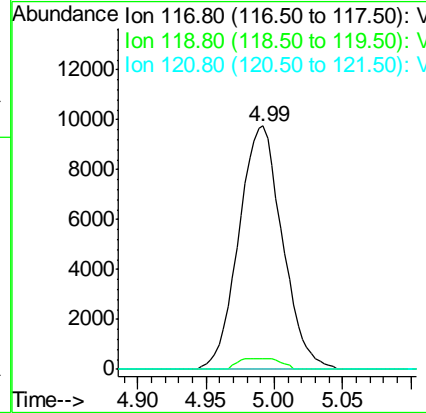
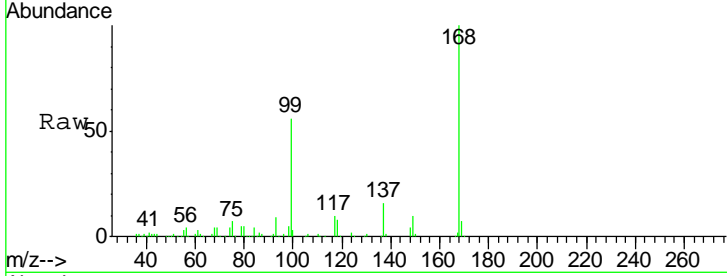




#38
 Carbon Tetrachloride
 Concen: 4.98 ug/l
 RT: 4.99 min Scan# 1369
 Delta R.T. -0.15 min
 Lab File: VU025213.D
 Acq: 05 Jul 2018 14:12

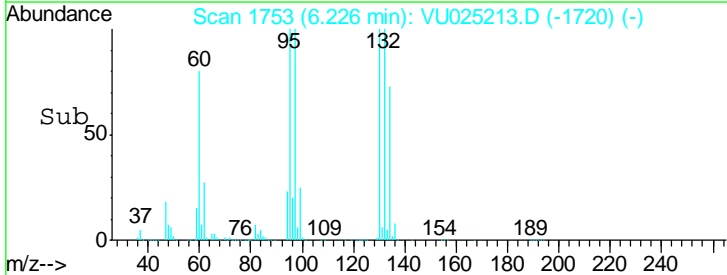
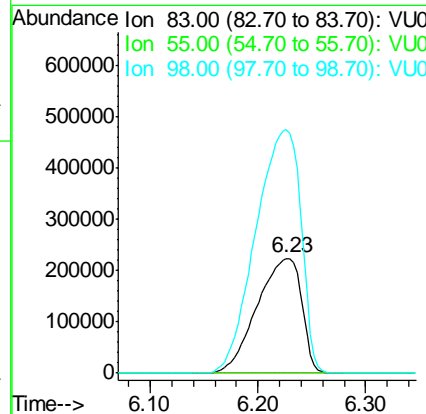
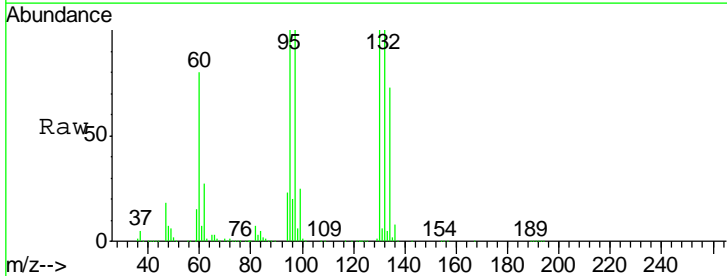
Instrument :
 MSVOA_U
 ClientSampleId :
 WPO21MW473-180628

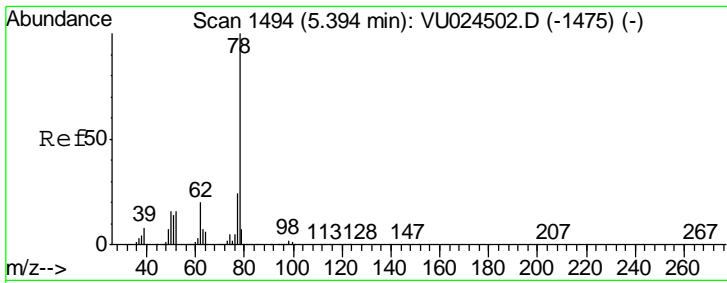
Tgt Ion	Resp	Lower	Upper
117	100		
119	4.5	76.1	114.1#
121	0.0	23.7	35.5#



#39
 Methylcyclohexane
 Concen: 130.46 ug/l
 RT: 6.23 min Scan# 1753
 Delta R.T. -0.19 min
 Lab File: VU025213.D
 Acq: 05 Jul 2018 14:12

Tgt Ion	Resp	Lower	Upper
83	100		
55	0.1	65.8	98.6#
98	211.9	36.7	55.1#

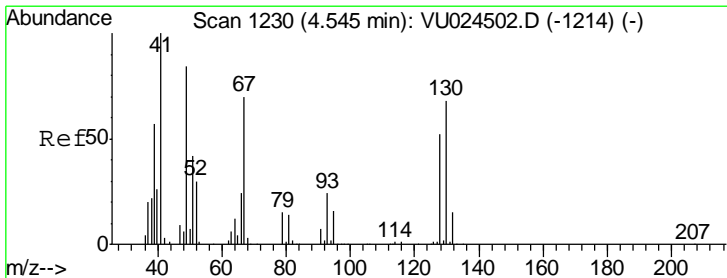
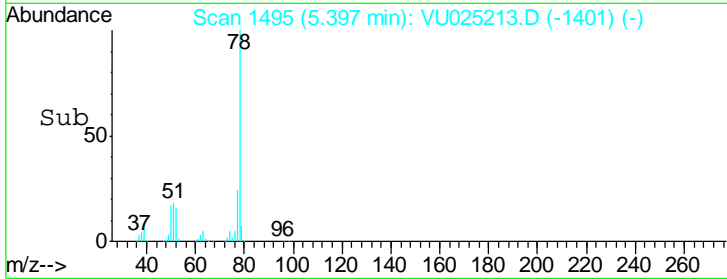
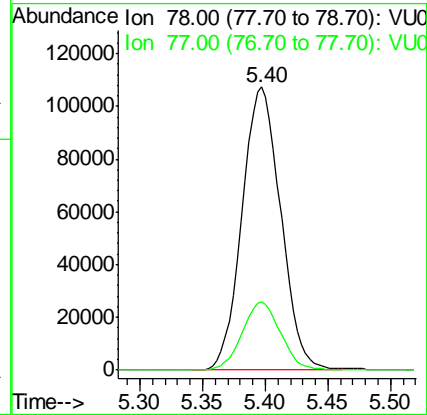
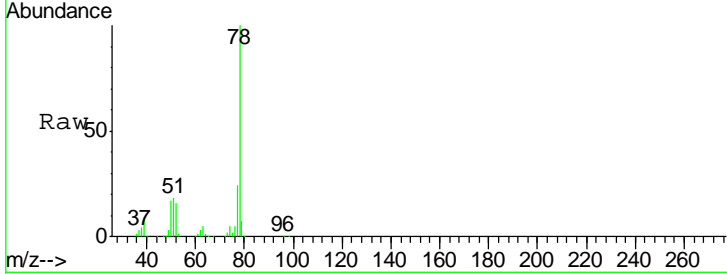




#40
Benzene
Concen: 20.48 ug/l
RT: 5.40 min Scan# 1495
Delta R.T. 0.00 min
Lab File: VU025213.D
Acq: 05 Jul 2018 14:12

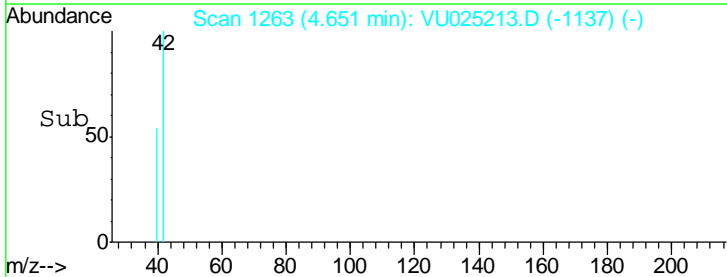
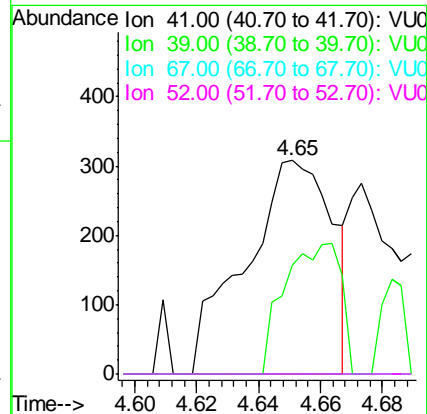
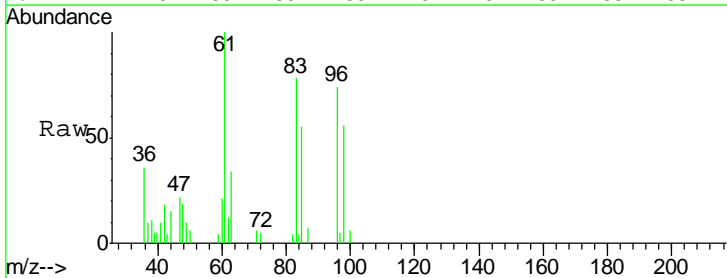
Instrument :
MSVOA_U
ClientSampleId :
WPO21MW473-180628

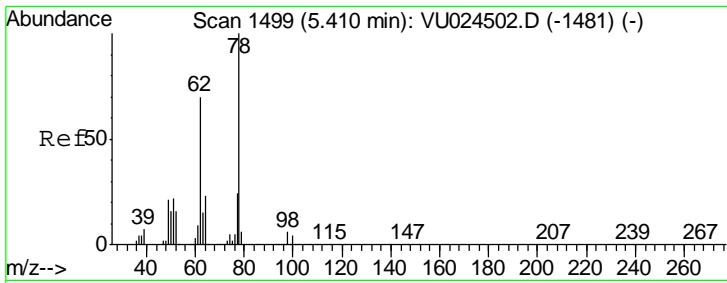
Tgt Ion	Resp	Lower	Upper
78	100		
77	24.1	19.2	28.8



#41
Methacrylonitrile
Concen: 0.26 ug/l
RT: 4.65 min Scan# 1263
Delta R.T. 0.11 min
Lab File: VU025213.D
Acq: 05 Jul 2018 14:12

Tgt Ion	Resp	Lower	Upper
41	100		
39	39.4	43.8	65.6#
67	0.0	56.3	84.5#
52	0.0	23.2	34.8#

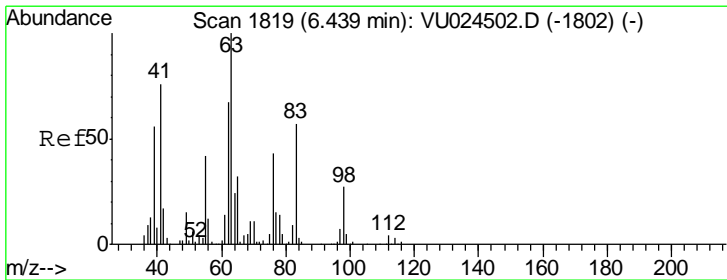
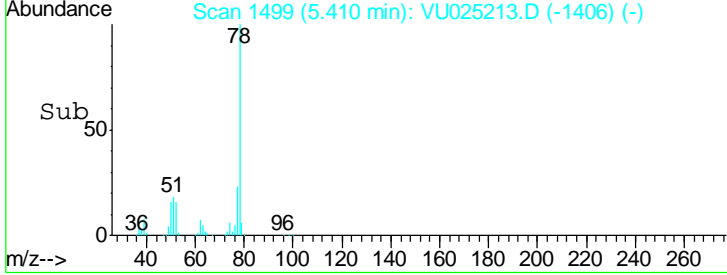
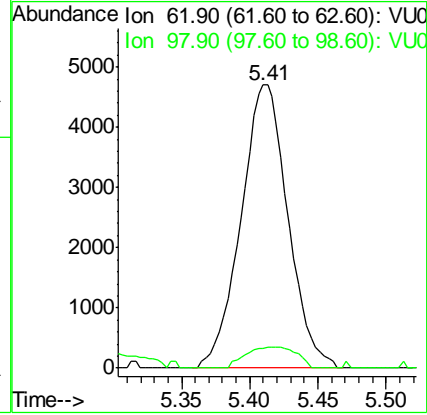
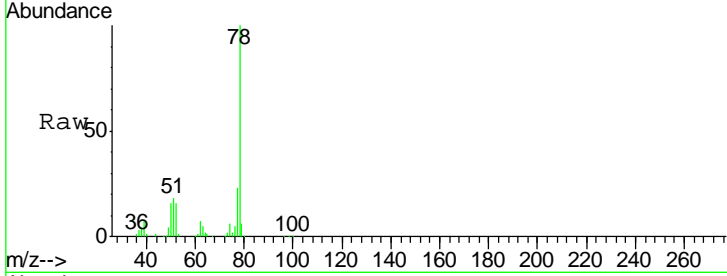




#42
 1,2-Dichloroethane
 Concen: 2.63 ug/l
 RT: 5.41 min Scan# 1499
 Delta R.T. -0.00 min
 Lab File: VU025213.D
 Acq: 05 Jul 2018 14:12

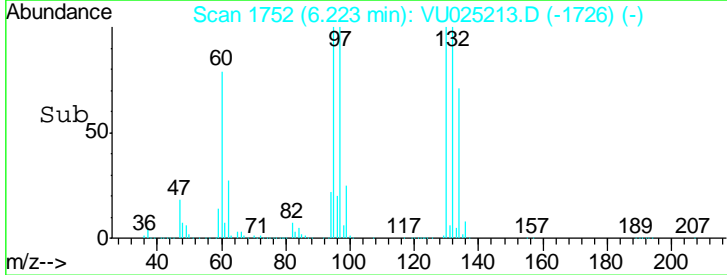
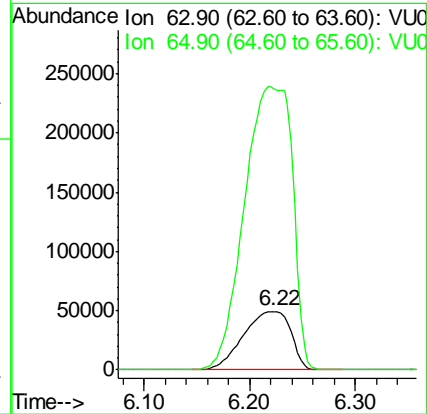
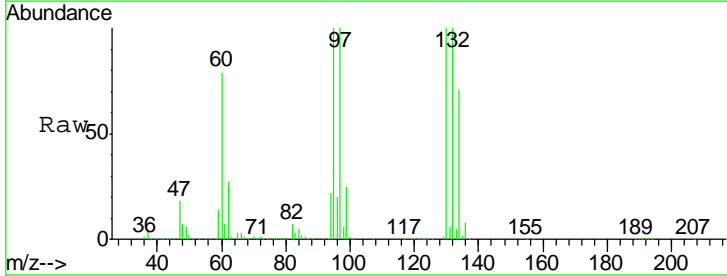
Instrument :
 MSVOA_U
ClientSampled :
 WPO21MW473-180628

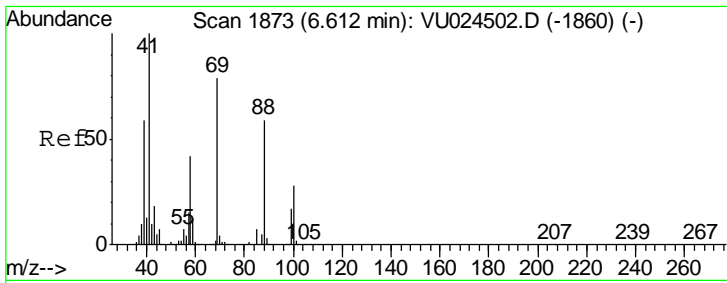
Tgt Ion	Resp	Lower	Upper
62	11242		
98	8.0	0.0	16.6



#45
 1,2-Dichloropropane
 Concen: 51.68 ug/l
 RT: 6.22 min Scan# 1752
 Delta R.T. -0.22 min
 Lab File: VU025213.D
 Acq: 05 Jul 2018 14:12

Tgt Ion	Resp	Lower	Upper
63	155062		
65	479.4	24.8	37.2#

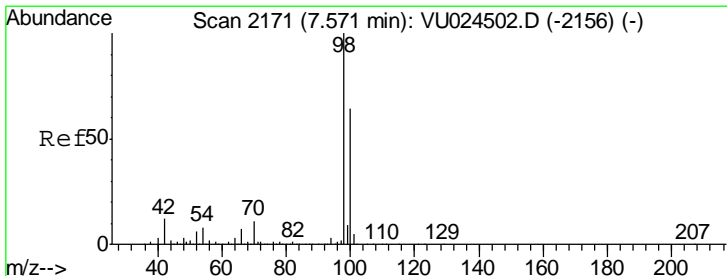
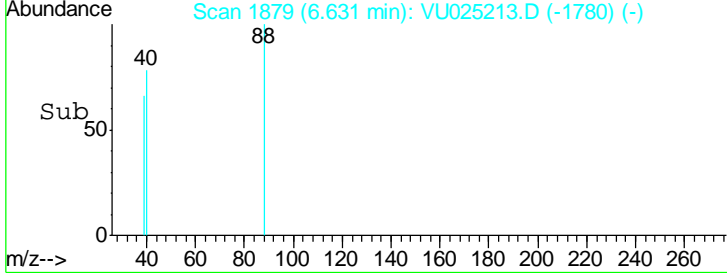
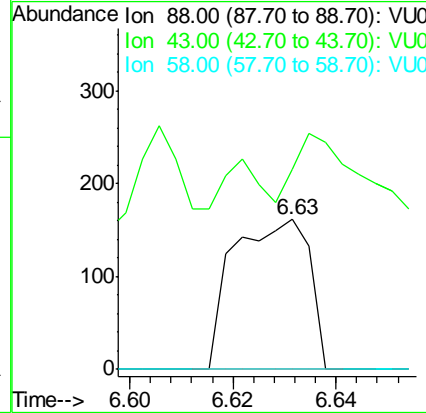
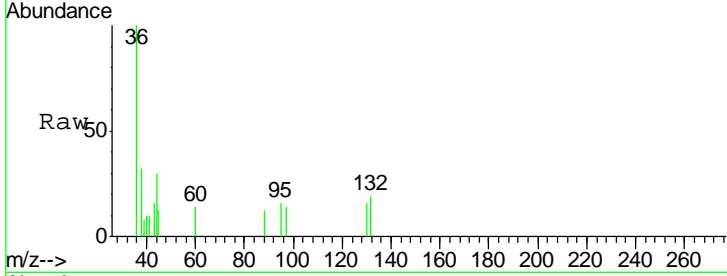




#49
 1,4-Dioxane
 Concen: 2.30 ug/l
 RT: 6.63 min Scan# 1879
 Delta R.T. 0.02 min
 Lab File: VU025213.D
 Acq: 05 Jul 2018 14:12

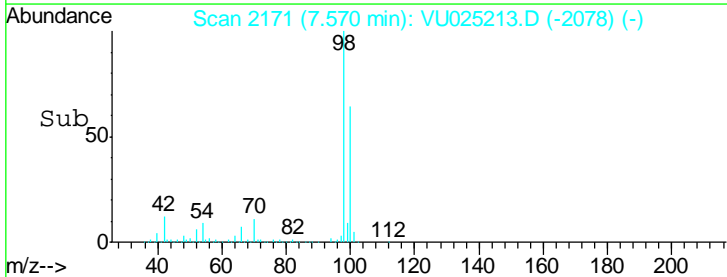
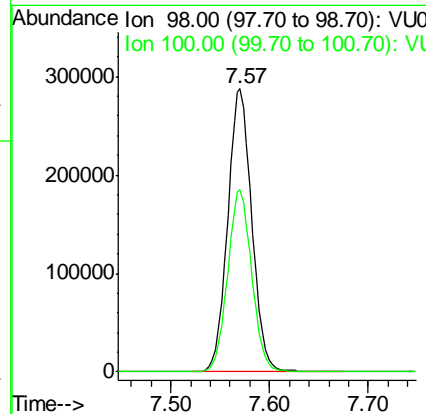
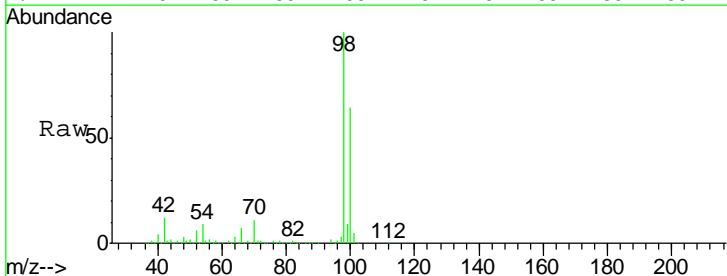
Instrument :
 MSVOA_U
ClientSampled :
 W/P021MW473-180628

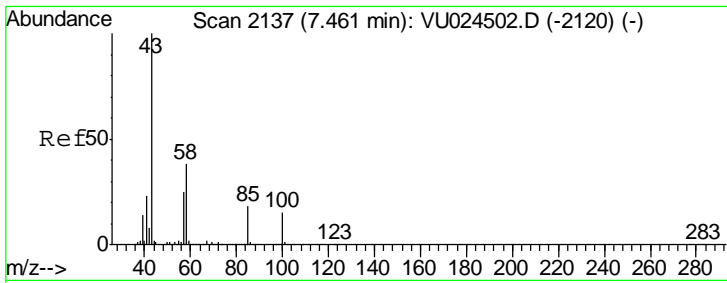
Tgt Ion	Resp	Lower	Upper
88	100		
43	88.3	28.6	42.8#
58	0.0	58.2	87.4#



#50
 Toluene-d8
 Concen: 48.58 ug/l
 RT: 7.57 min Scan# 2171
 Delta R.T. -0.00 min
 Lab File: VU025213.D
 Acq: 05 Jul 2018 14:12

Tgt Ion	Resp	Lower	Upper
98	100		
100	64.1	51.1	76.7

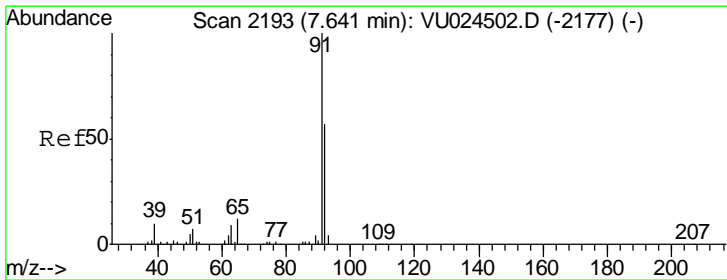
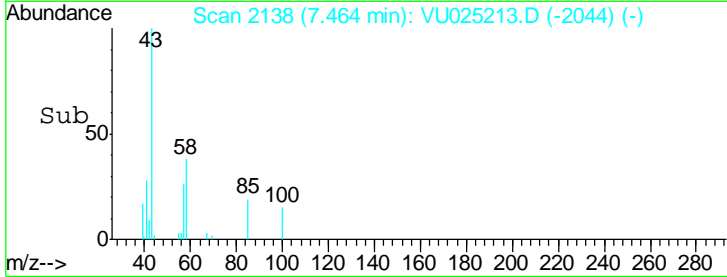
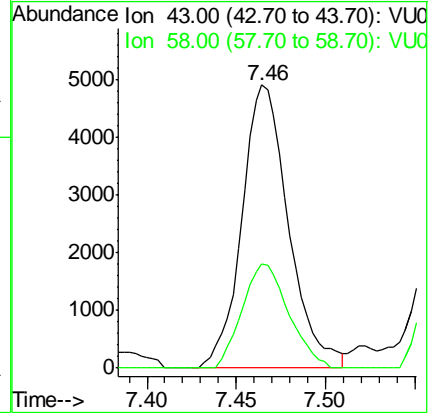
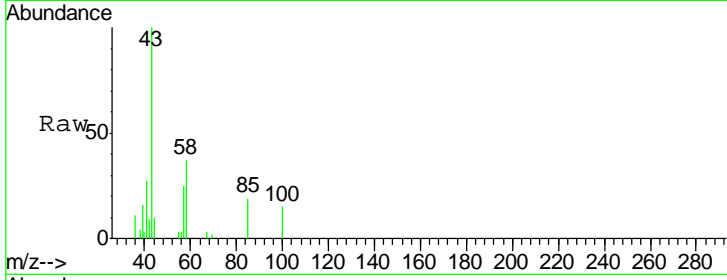




#51
 4-Methyl-2-Pentanone
 Concen: 1.92 ug/l
 RT: 7.46 min Scan# 2138
 Delta R.T. 0.00 min
 Lab File: VU025213.D
 Acq: 05 Jul 2018 14:12

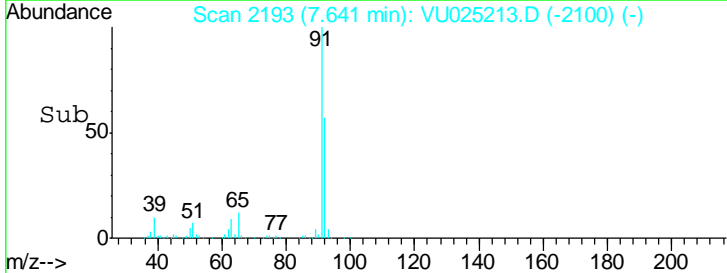
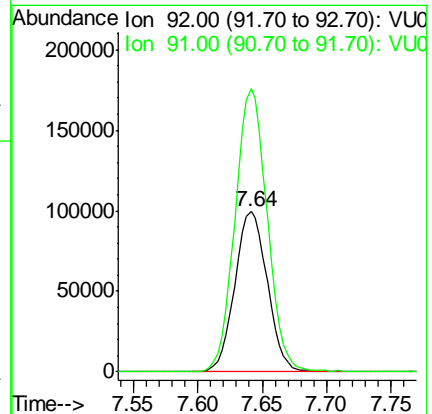
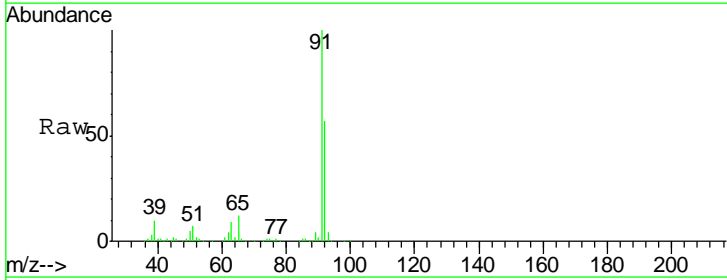
Instrument :
 MSVOA_U
 ClientSampleId :
 W/P021MW473-180628

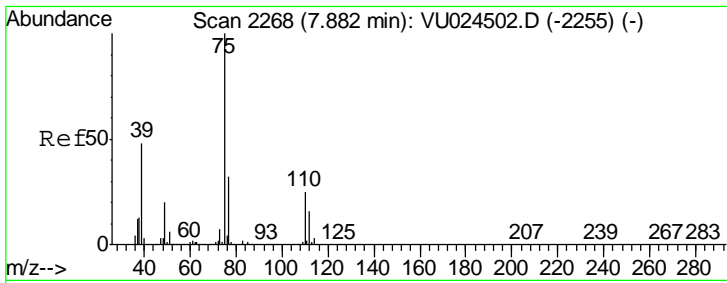
Tgt Ion	Resp	Lower	Upper
43	100		
58	36.6	30.0	45.0



#52
 Toluene
 Concen: 24.12 ug/l
 RT: 7.64 min Scan# 2193
 Delta R.T. -0.00 min
 Lab File: VU025213.D
 Acq: 05 Jul 2018 14:12

Tgt Ion	Resp	Lower	Upper
92	100		
91	174.2	140.5	210.7

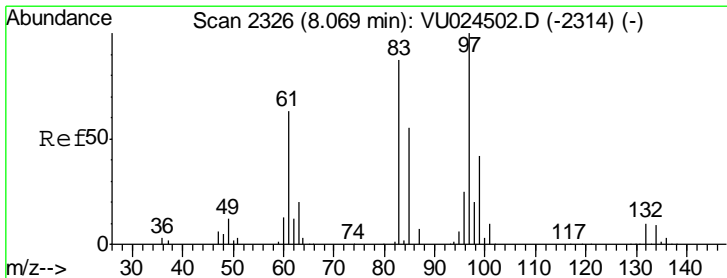
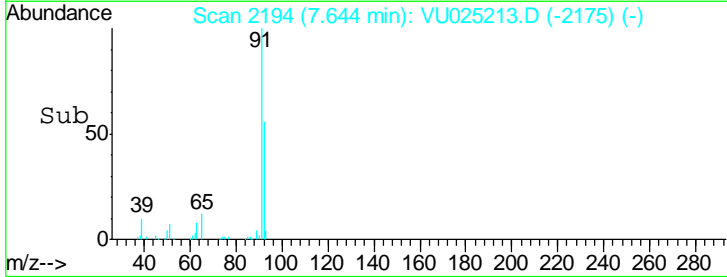
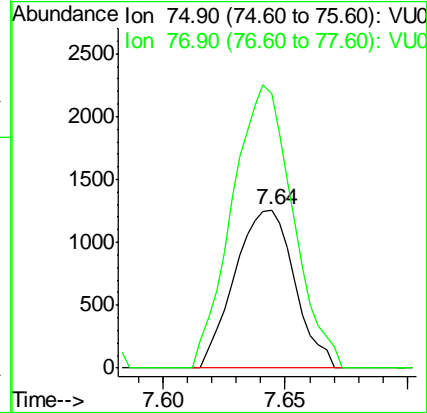
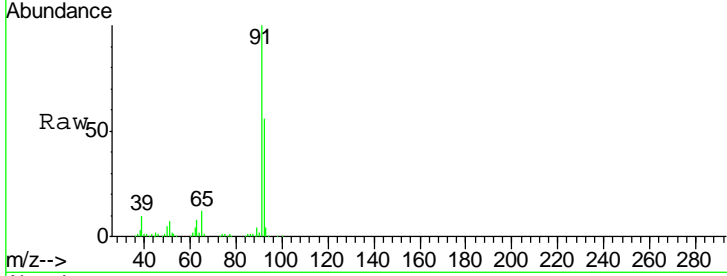




#53
 t-1,3-Dichloropropene
 Concen: 0.45 ug/l
 RT: 7.64 min Scan# 2194
 Delta R.T. -0.24 min
 Lab File: VU025213.D
 Acq: 05 Jul 2018 14:12

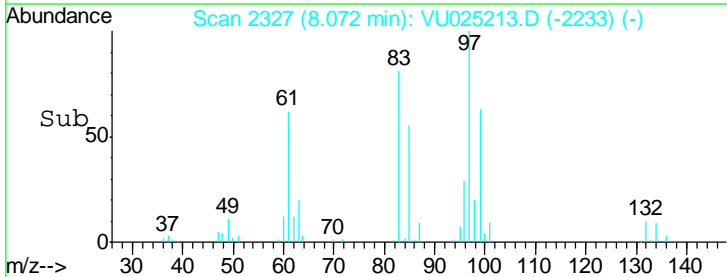
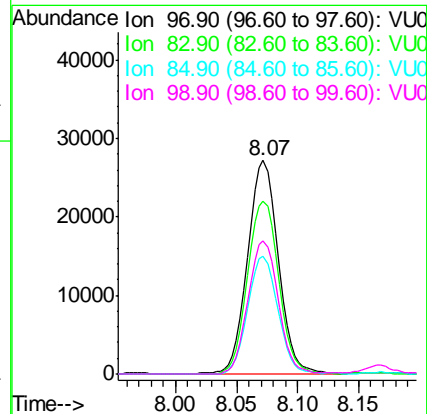
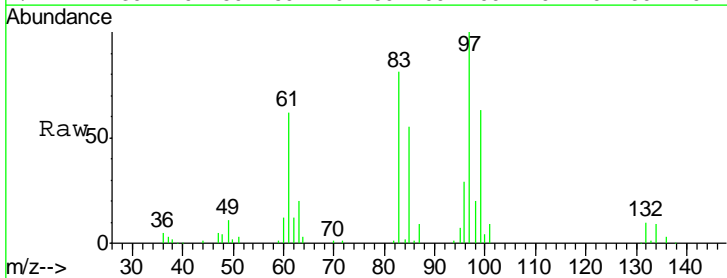
Instrument :
 MSVOA_U
 ClientSampleId :
 WPO21MW473-180628

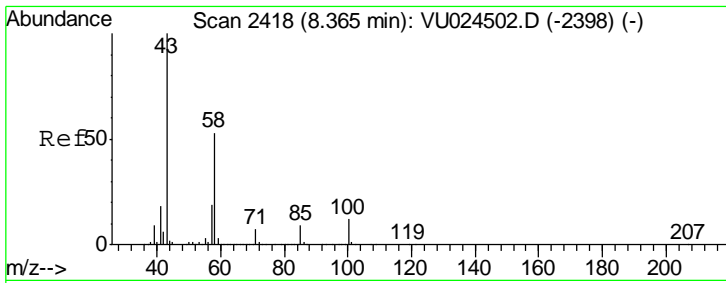
Tgt Ion	Resp	Lower	Upper
75	100		
77	173.3	24.8	37.2#



#55
 1,1,2-Trichloroethane
 Concen: 16.06 ug/l
 RT: 8.07 min Scan# 2327
 Delta R.T. 0.00 min
 Lab File: VU025213.D
 Acq: 05 Jul 2018 14:12

Tgt Ion	Resp	Lower	Upper
97	100		
83	81.2	70.5	105.7
85	55.0	46.4	69.6
99	62.6	50.2	75.2

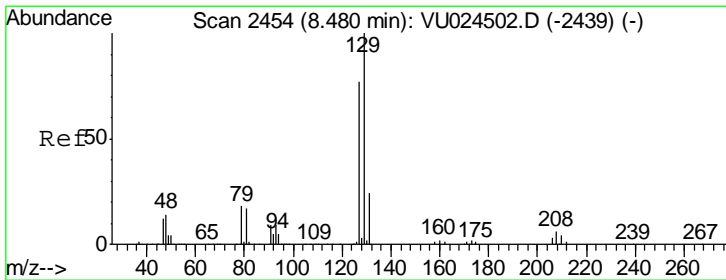
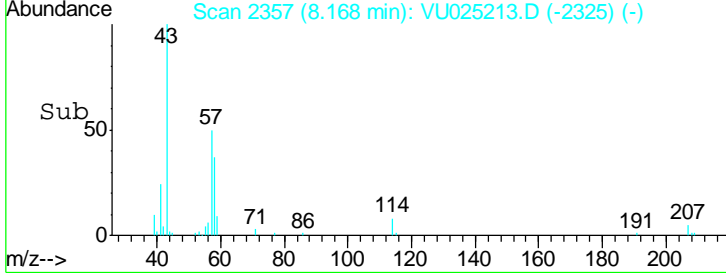
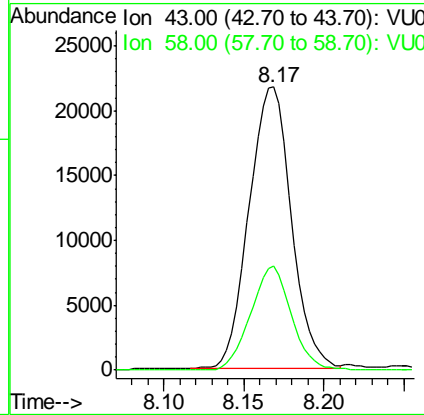
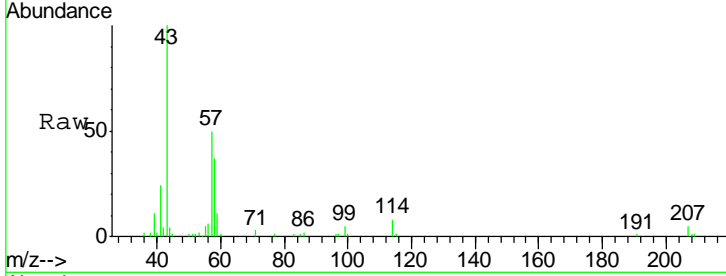




#59
 2-Hexanone
 Concen: 10.33 ug/l
 RT: 8.17 min Scan# 2357
 Delta R.T. -0.20 min
 Lab File: VU025213.D
 Acq: 05 Jul 2018 14:12

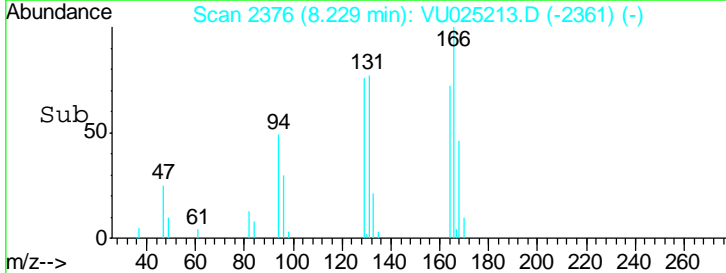
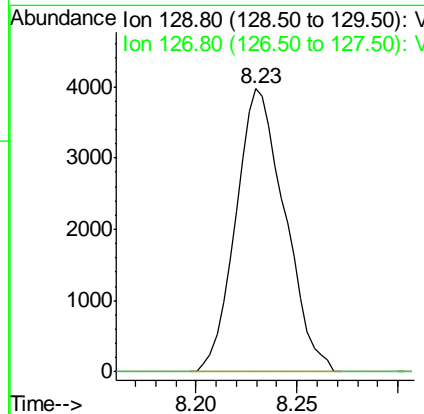
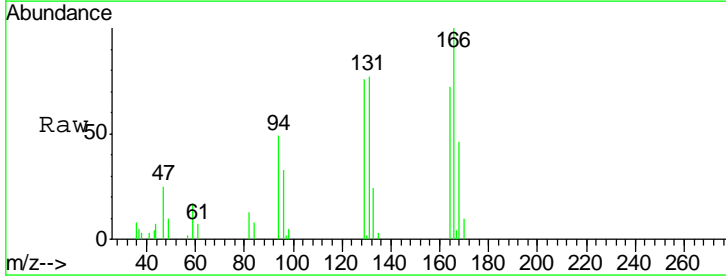
Instrument : MSVOA_U
 ClientSampleId : WPO21MW473-180628

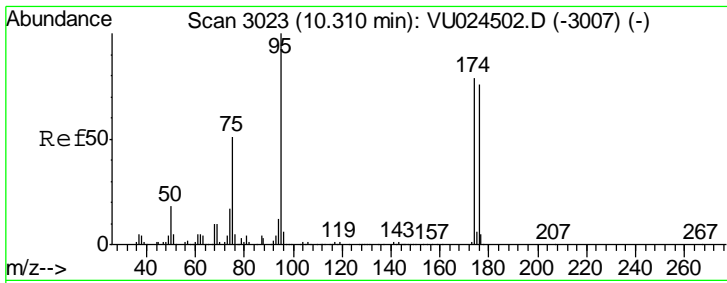
Tgt Ion	Resp	Lower	Upper
43	100		
58	35.6	26.4	79.0



#60
 Dibromochloromethane
 Concen: 1.84 ug/l
 RT: 8.23 min Scan# 2376
 Delta R.T. -0.25 min
 Lab File: VU025213.D
 Acq: 05 Jul 2018 14:12

Tgt Ion	Resp	Lower	Upper
129	100		
127	0.0	38.6	116.0#

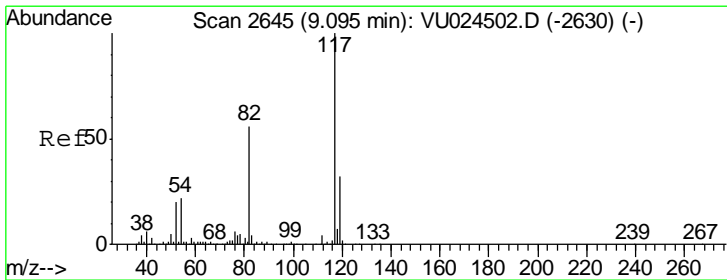
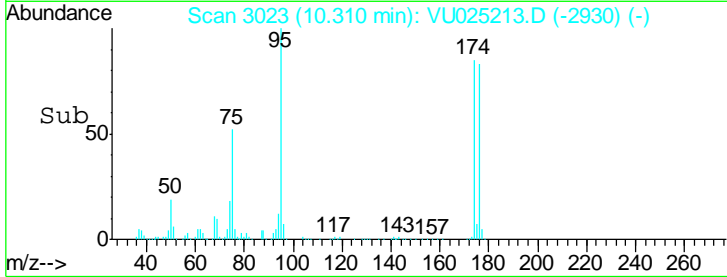
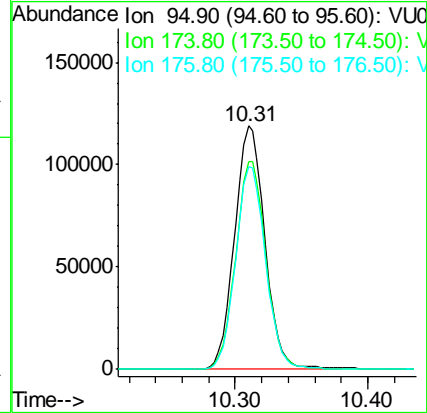
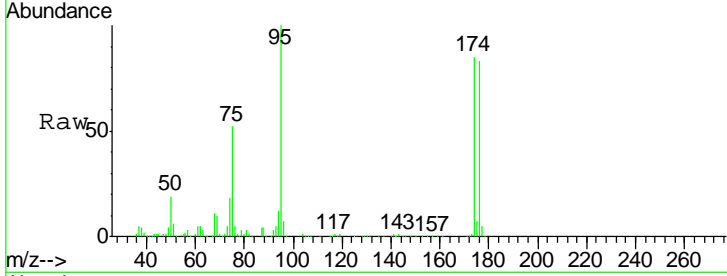




#62
 4-Bromofluorobenzene
 Concen: 46.79 ug/l
 RT: 10.31 min Scan# 3023
 Delta R.T. -0.00 min
 Lab File: VU025213.D
 Acq: 05 Jul 2018 14:12

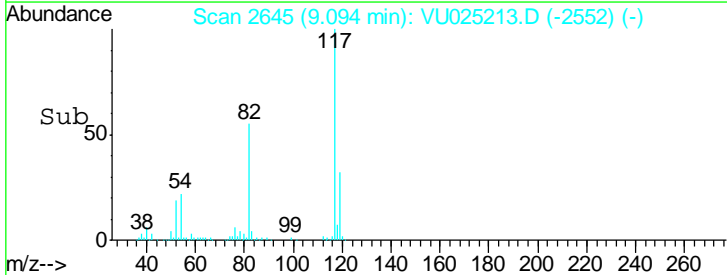
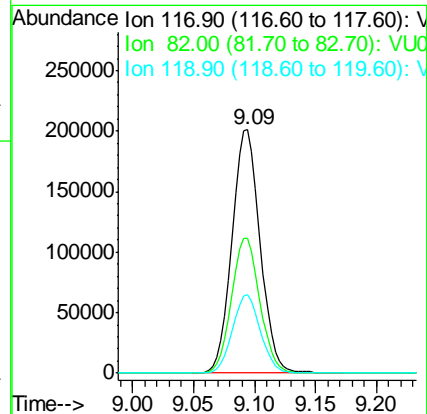
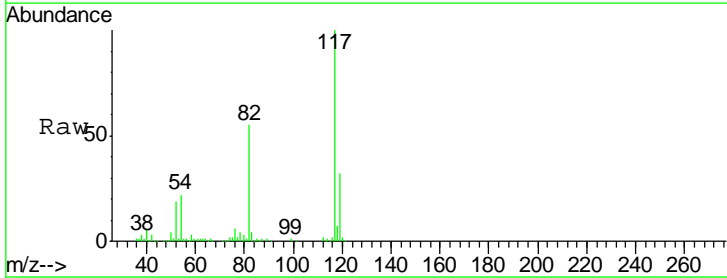
Instrument :
 MSVOA_U
 ClientSampled :
 WPO21MW473-180628

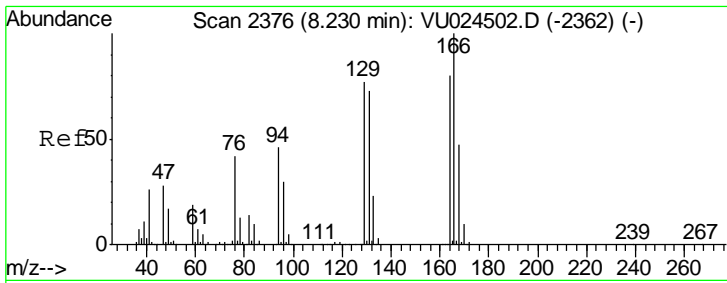
Tgt Ion	Resp	Lower	Upper
95	188851		
174	85.2	0.0	165.8
176	82.5	0.0	159.4



#63
 Chlorobenzene-d5
 Concen: 50.00 ug/l
 RT: 9.09 min Scan# 2645
 Delta R.T. -0.00 min
 Lab File: VU025213.D
 Acq: 05 Jul 2018 14:12

Tgt Ion	Resp	Lower	Upper
117	325120		
82	55.4	44.3	66.5
119	32.1	25.4	38.2

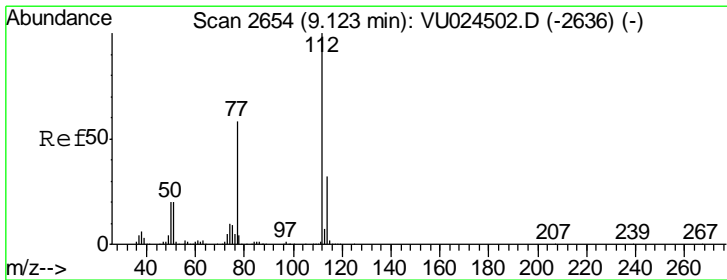
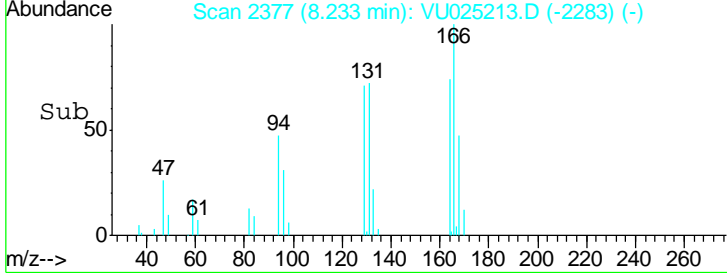
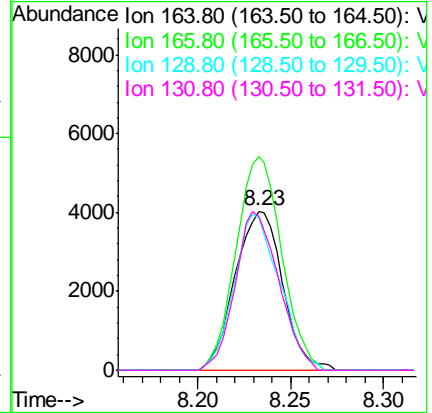
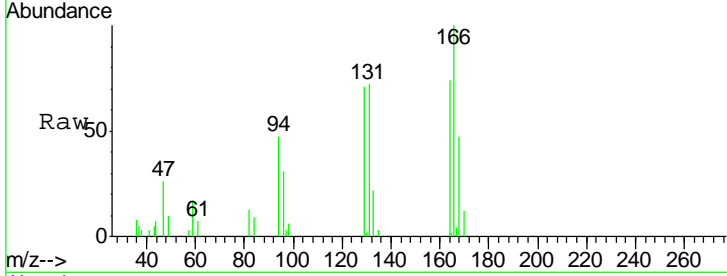




#64
 Tetrachloroethene
 Concen: 2.32 ug/l
 RT: 8.23 min Scan# 2377
 Delta R.T. 0.00 min
 Lab File: VU025213.D
 Acq: 05 Jul 2018 14:12

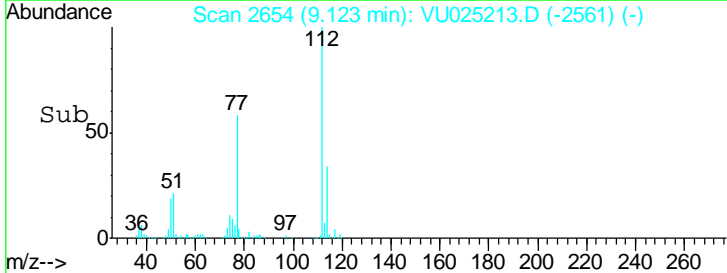
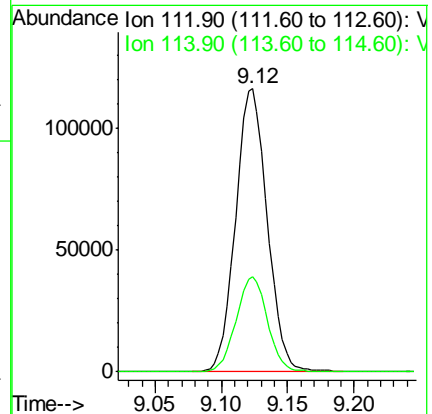
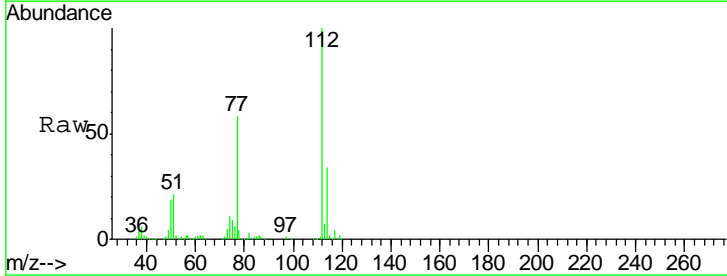
Instrument :
 MSVOA_U
ClientSampleId :
 WPO21MW473-180628

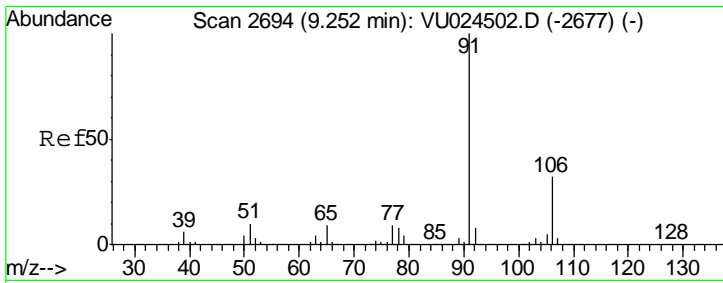
Tgt Ion	Resp	Lower	Upper
164	100		
166	134.5	101.7	152.5
129	96.1	76.9	115.3
131	96.5	74.9	112.3



#65
 Chlorobenzene
 Concen: 23.21 ug/l
 RT: 9.12 min Scan# 2654
 Delta R.T. -0.00 min
 Lab File: VU025213.D
 Acq: 05 Jul 2018 14:12

Tgt Ion	Resp	Lower	Upper
112	100		
114	33.7	25.6	38.4

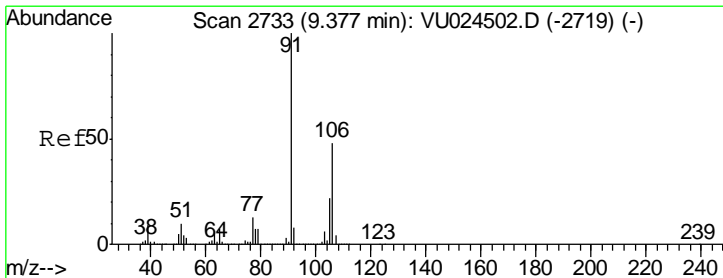
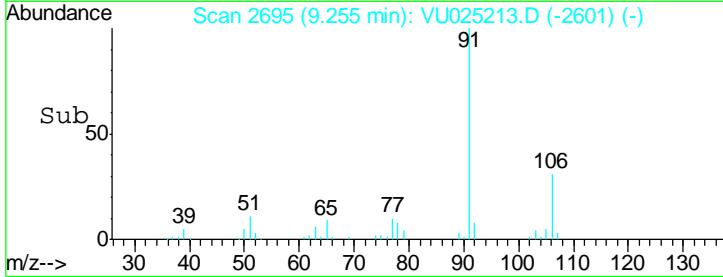
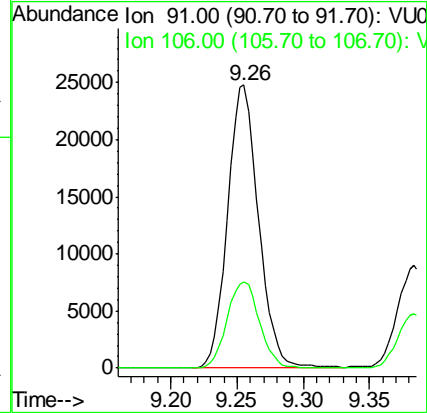
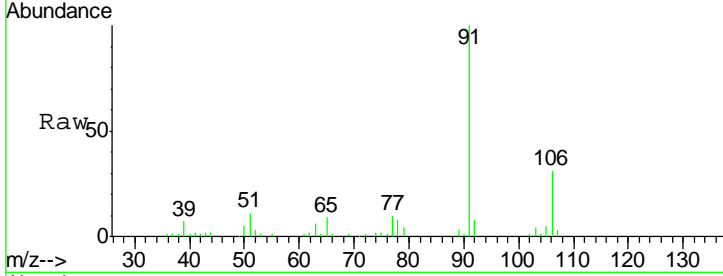




#67
Ethyl Benzene
Concen: 2.77 ug/l
RT: 9.26 min Scan# 2695
Delta R.T. 0.00 min
Lab File: VU025213.D
Acq: 05 Jul 2018 14:12

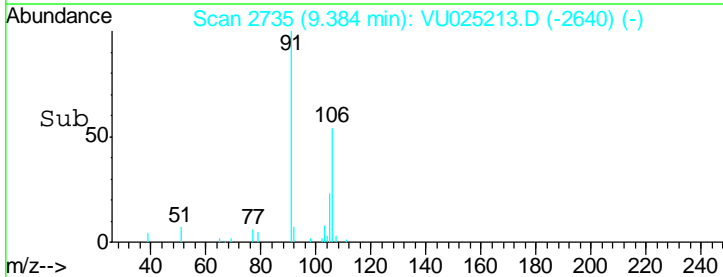
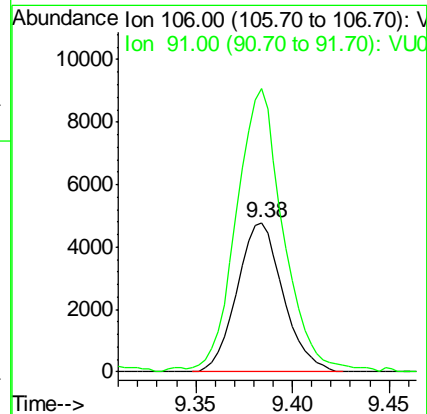
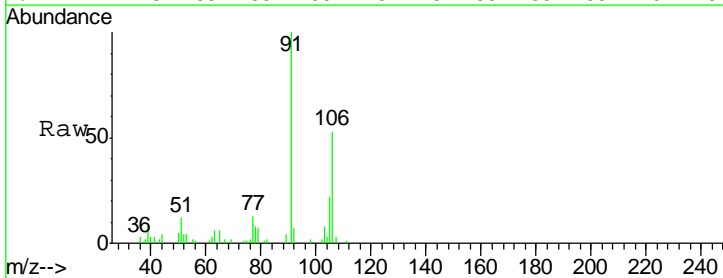
Instrument :
MSVOA_U
ClientSampleId :
WPO21MW473-180628

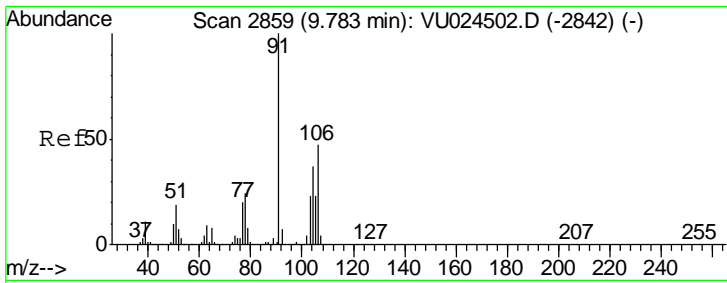
Tgt Ion: 91 Resp: 40268
Ion Ratio Lower Upper
91 100
106 30.6 24.2 36.4



#68
m/p-Xylenes
Concen: 1.41 ug/l
RT: 9.38 min Scan# 2735
Delta R.T. 0.01 min
Lab File: VU025213.D
Acq: 05 Jul 2018 14:12

Tgt Ion: 106 Resp: 7894
Ion Ratio Lower Upper
106 100
91 195.2 166.5 249.7

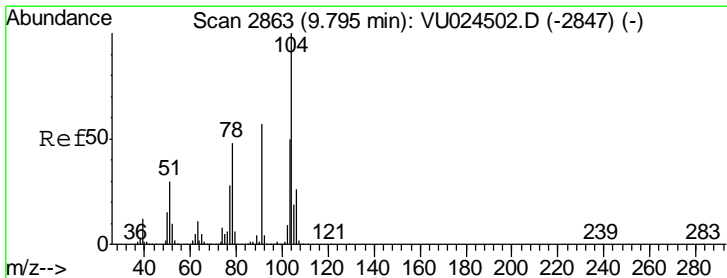
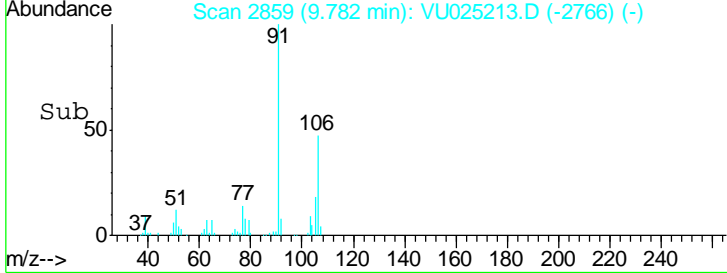
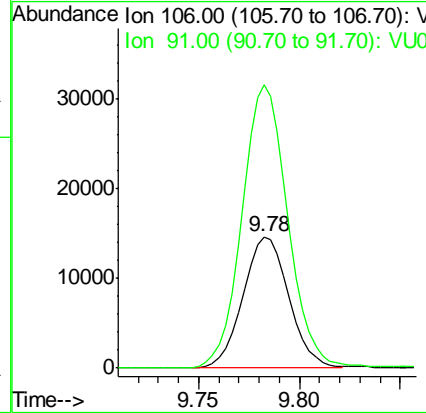
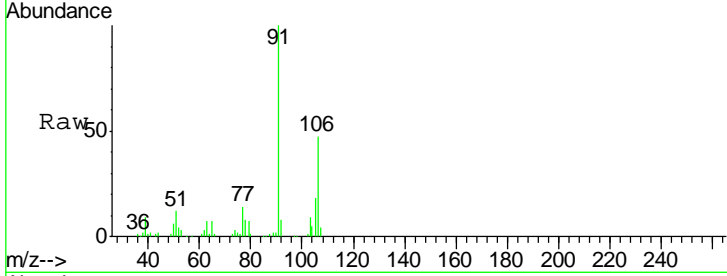




#69
 o-Xylene
 Concen: 4.20 ug/l
 RT: 9.78 min Scan# 2859
 Delta R.T. -0.00 min
 Lab File: VU025213.D
 Acq: 05 Jul 2018 14:12

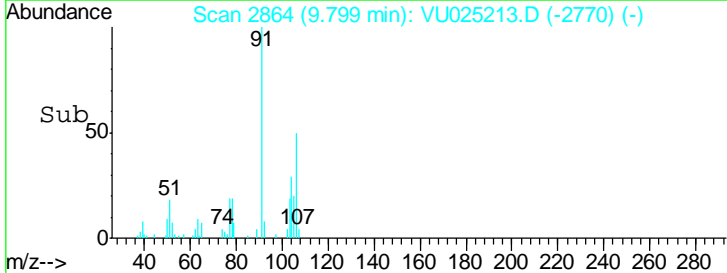
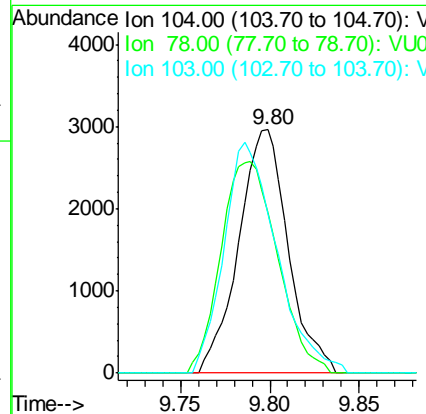
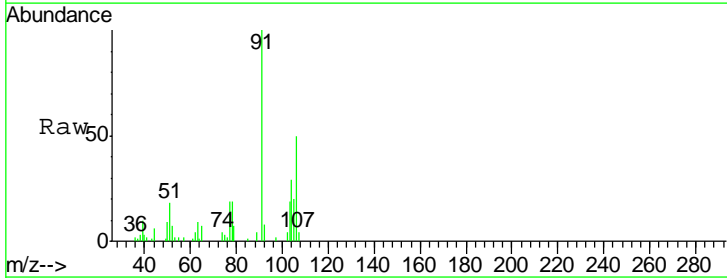
Instrument : MSVOA_U
 ClientSampleId : WPO21MW473-180628

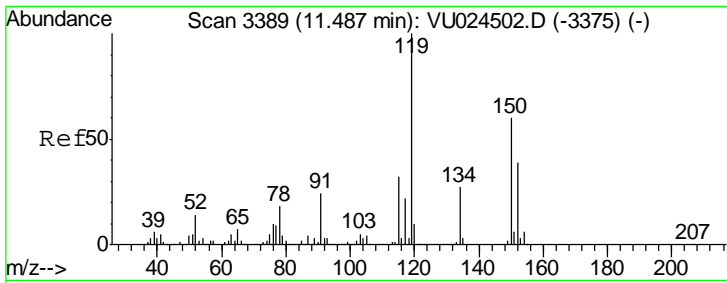
Tgt Ion	Resp	Lower	Upper
106	23266		
91	216.3	110.7	331.9



#70
 Styrene
 Concen: 0.63 ug/l
 RT: 9.80 min Scan# 2864
 Delta R.T. 0.00 min
 Lab File: VU025213.D
 Acq: 05 Jul 2018 14:12

Tgt Ion	Resp	Lower	Upper
104	5737		
78	98.9	40.6	60.8#
103	101.2	44.7	67.1#

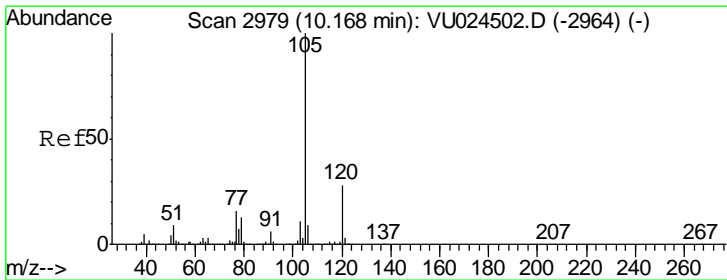
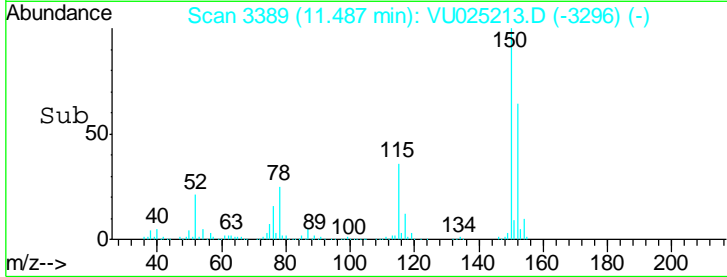
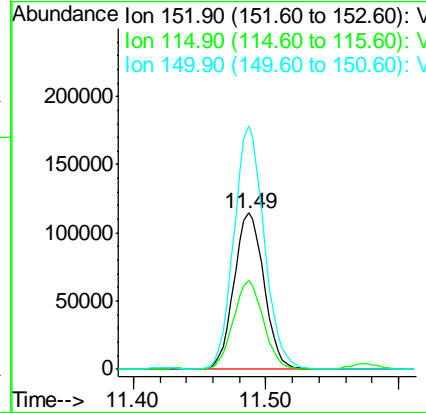
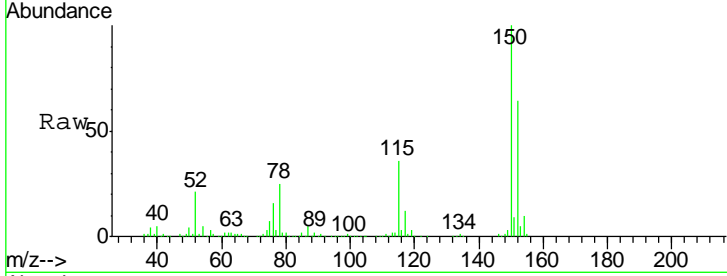




#72
 1,4-Dichlorobenzene-d4
 Concen: 50.00 ug/l
 RT: 11.49 min Scan# 3389
 Delta R.T. -0.00 min
 Lab File: VU025213.D
 Acq: 05 Jul 2018 14:12

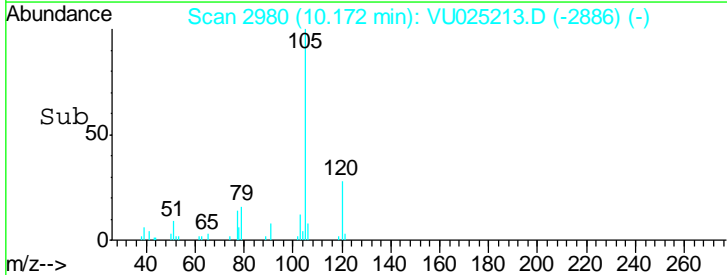
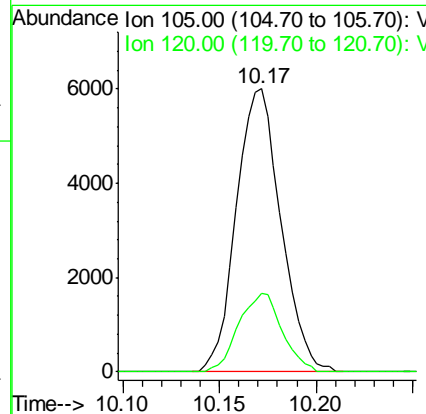
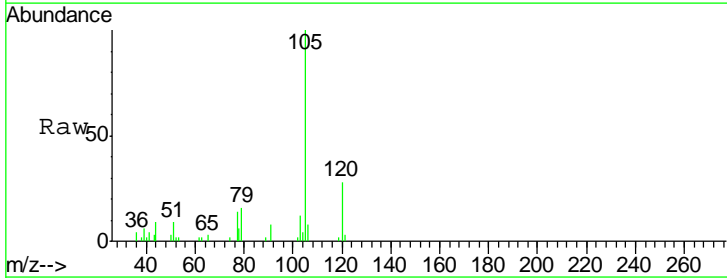
Instrument : MSVOA_U
 ClientSampleId : WPO21MW473-180628

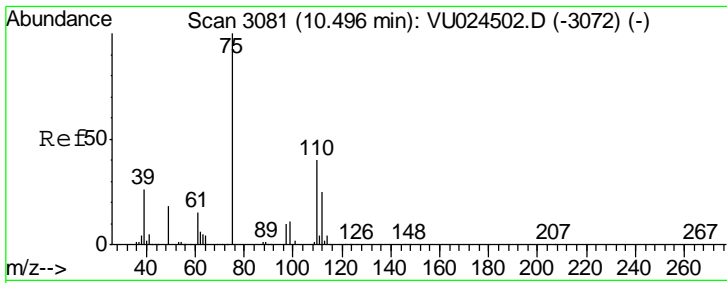
Tgt Ion	Resp	Lower	Upper
152	180367		
115	56.3	43.0	129.0
150	156.9	0.0	354.0



#73
 Isopropylbenzene
 Concen: 0.69 ug/l
 RT: 10.17 min Scan# 2980
 Delta R.T. 0.00 min
 Lab File: VU025213.D
 Acq: 05 Jul 2018 14:12

Tgt Ion	Resp	Lower	Upper
105	9613		
120	27.1	13.2	39.6

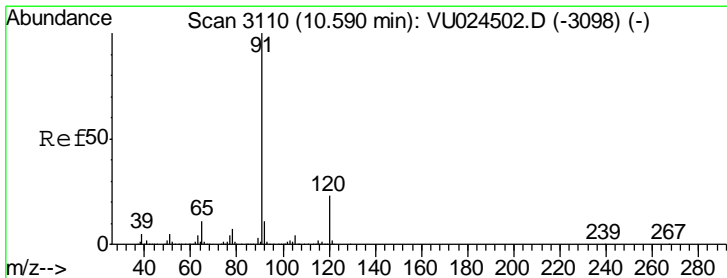
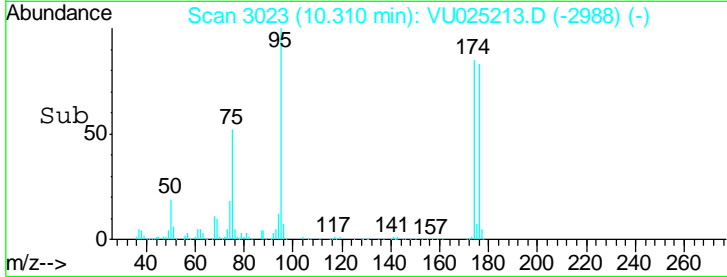
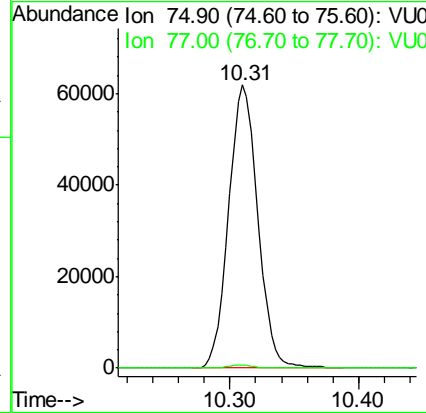
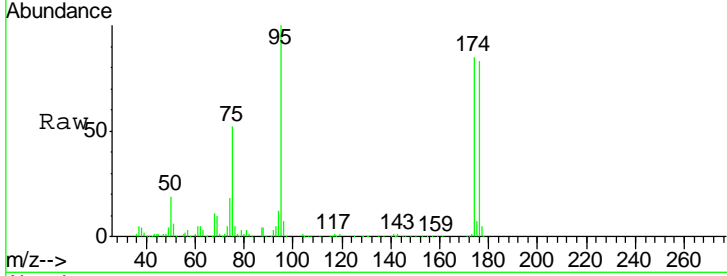




#76
 1,2,3-Trichloropropane
 Concen: 24.37 ug/l
 RT: 10.31 min Scan# 3023
 Delta R.T. -0.19 min
 Lab File: VU025213.D
 Acq: 05 Jul 2018 14:12

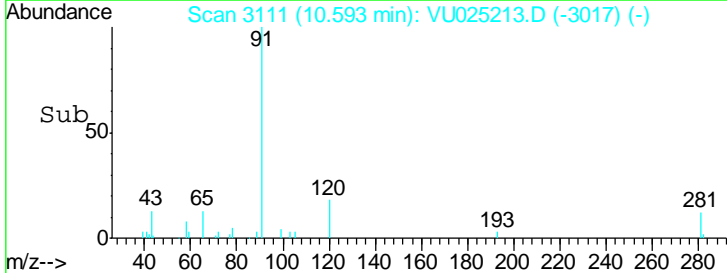
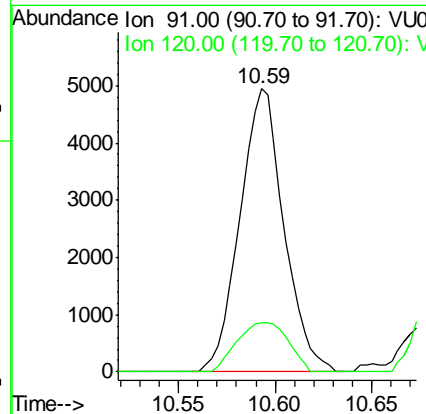
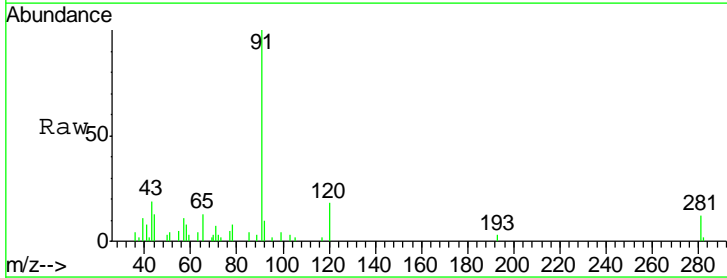
Instrument : MSVOA_U
 ClientSampled : WPO21MW473-180628

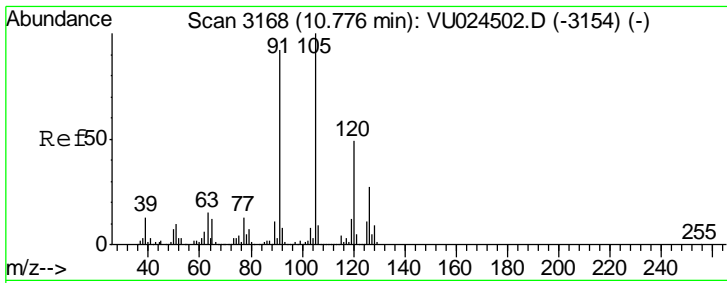
Tgt Ion: 75 Resp: 96778
 Ion Ratio Lower Upper
 75 100
 77 1.0 20.9 62.7#



#78
 n-propylbenzene
 Concen: 0.48 ug/l
 RT: 10.59 min Scan# 3111
 Delta R.T. 0.00 min
 Lab File: VU025213.D
 Acq: 05 Jul 2018 14:12

Tgt Ion: 91 Resp: 7818
 Ion Ratio Lower Upper
 91 100
 120 20.4 11.2 33.5

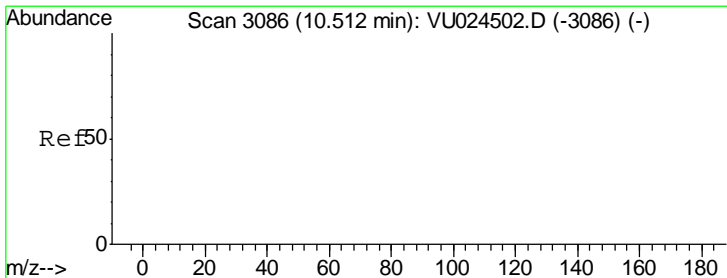
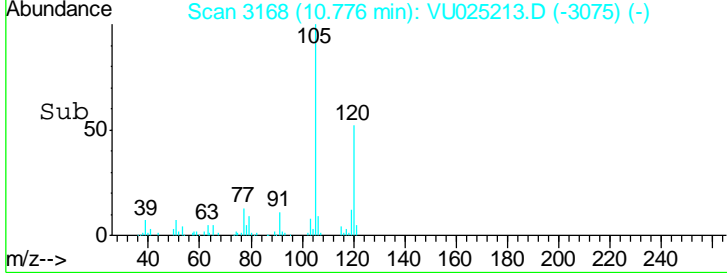
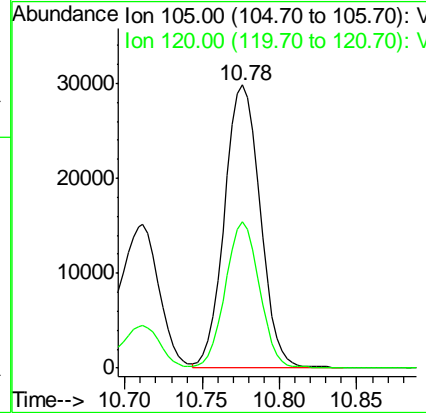
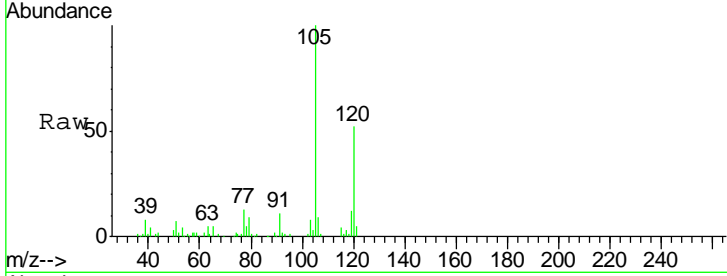




#80
 1,3,5-Trimethylbenzene
 Concen: 3.98 ug/l
 RT: 10.78 min Scan# 3168
 Delta R.T. -0.00 min
 Lab File: VU025213.D
 Acq: 05 Jul 2018 14:12

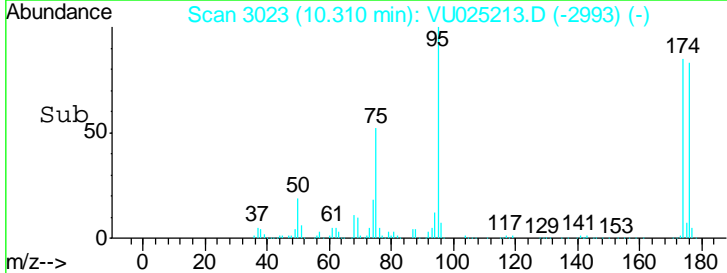
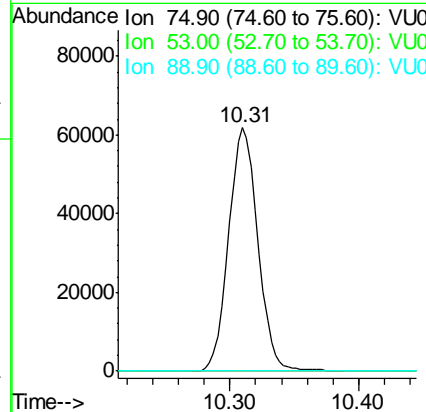
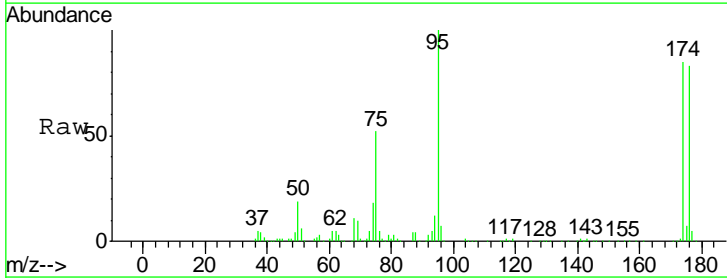
Instrument : MSVOA_U
 ClientSampleId : WPO21MW473-180628

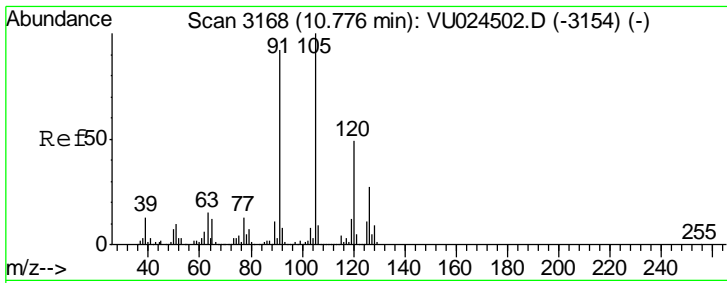
Tgt Ion	Resp	Lower	Upper
105	47797		
105	100		
120	49.3	24.1	72.2



#81
 trans-1,4-Dichloro-2-butene
 Concen: 56.40 ug/l
 RT: 10.31 min Scan# 3023
 Delta R.T. -0.20 min
 Lab File: VU025213.D
 Acq: 05 Jul 2018 14:12

Tgt Ion	Resp	Lower	Upper
75	96778		
75	100		
53	0.0	0.0	0.0
89	0.0	0.0	0.0#

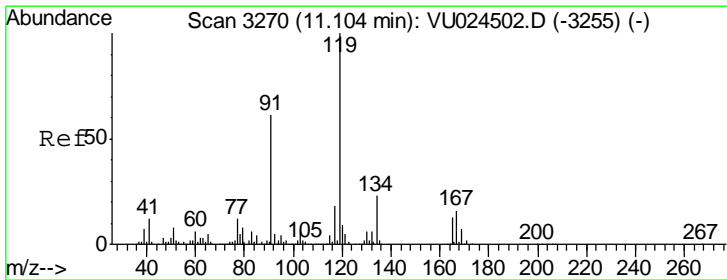
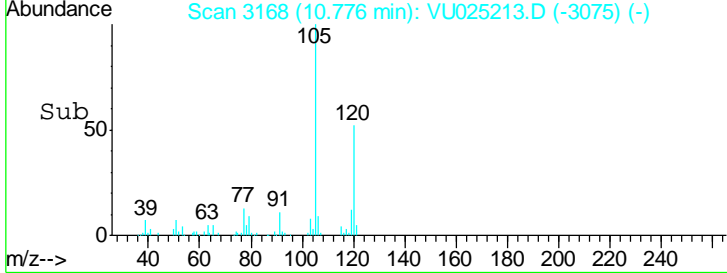
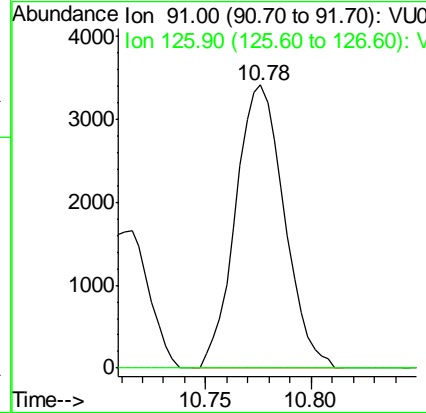
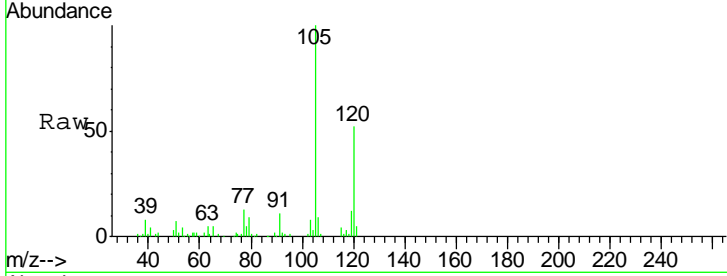




#82
 4-Chlorotoluene
 Concen: 0.49 ug/l
 RT: 10.78 min Scan# 3168
 Delta R.T. -0.00 min
 Lab File: VU025213.D
 Acq: 05 Jul 2018 14:12

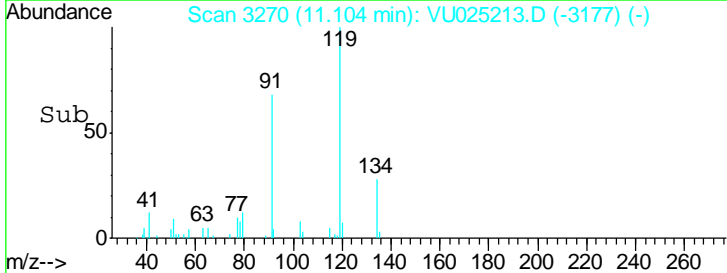
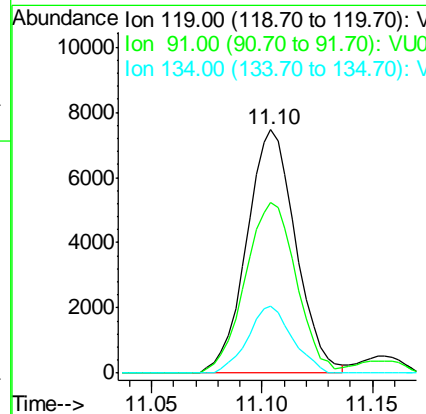
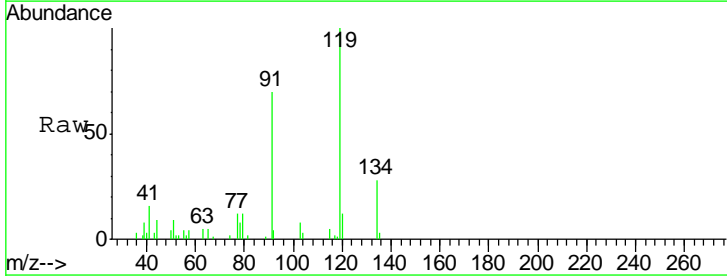
Instrument : MSVOA_U
 ClientSampleId : WPO21MW473-180628

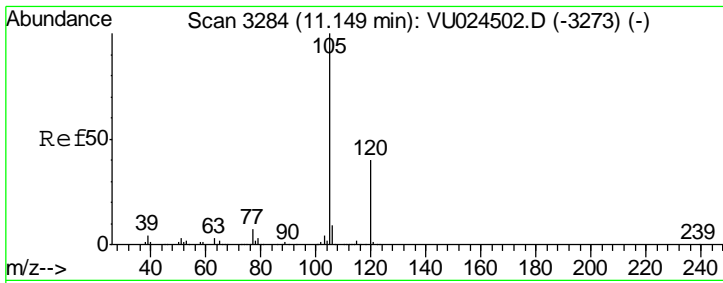
Tgt Ion	Resp	Lower	Upper
91	100		
126	0.0	14.9	44.9#



#83
 tert-Butylbenzene
 Concen: 1.00 ug/l
 RT: 11.10 min Scan# 3270
 Delta R.T. -0.00 min
 Lab File: VU025213.D
 Acq: 05 Jul 2018 14:12

Tgt Ion	Resp	Lower	Upper
119	100		
91	73.2	29.7	89.1
134	24.8	11.6	34.7

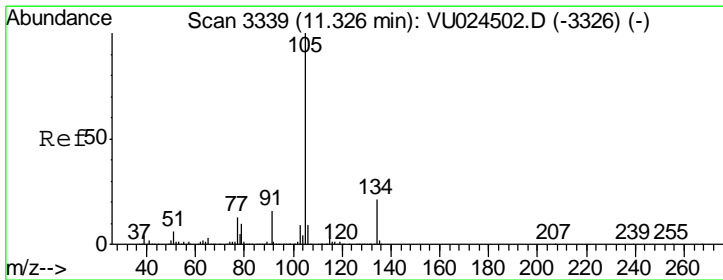
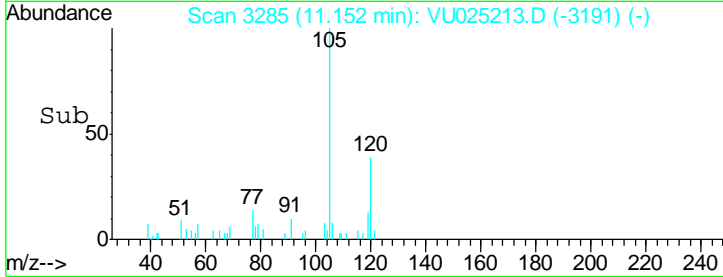
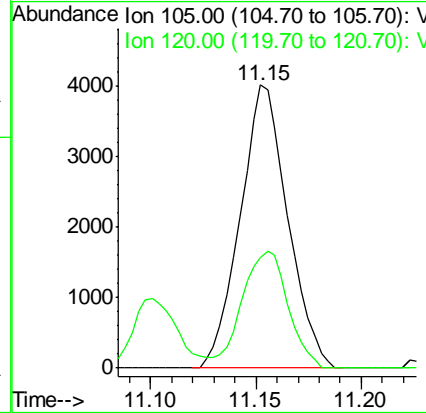
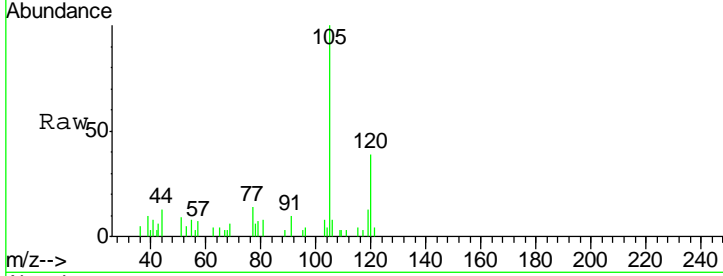




#84
 1,2,4-Trimethylbenzene
 Concen: 0.51 ug/l
 RT: 11.15 min Scan# 3285
 Delta R.T. 0.00 min
 Lab File: VU025213.D
 Acq: 05 Jul 2018 14:12

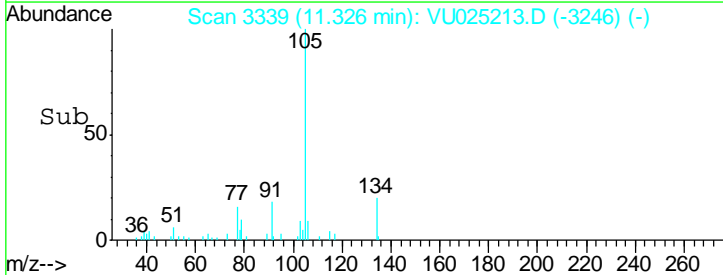
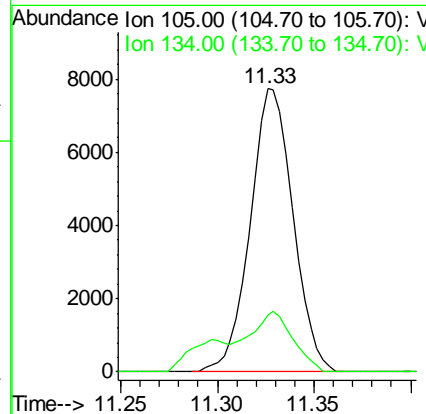
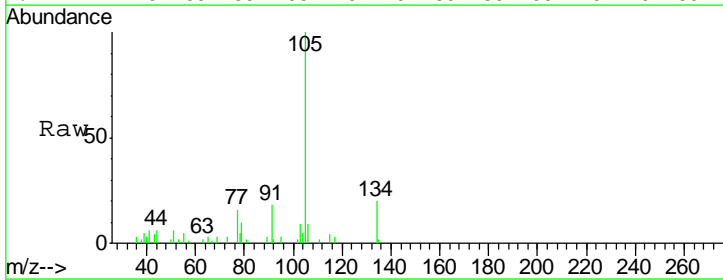
Instrument :
 MSVOA_U
 ClientSampleId :
 WPO21MW473-180628

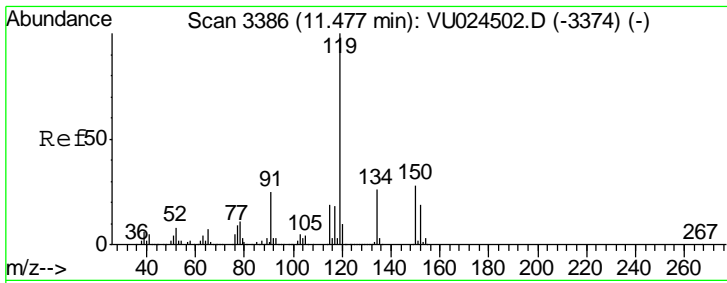
Tgt Ion:105 Resp: 6276
 Ion Ratio Lower Upper
 105 100
 120 40.2 22.6 67.8



#85
 sec-Butylbenzene
 Concen: 0.82 ug/l
 RT: 11.33 min Scan# 3339
 Delta R.T. -0.00 min
 Lab File: VU025213.D
 Acq: 05 Jul 2018 14:12

Tgt Ion:105 Resp: 11922
 Ion Ratio Lower Upper
 105 100
 134 20.8 9.7 29.1

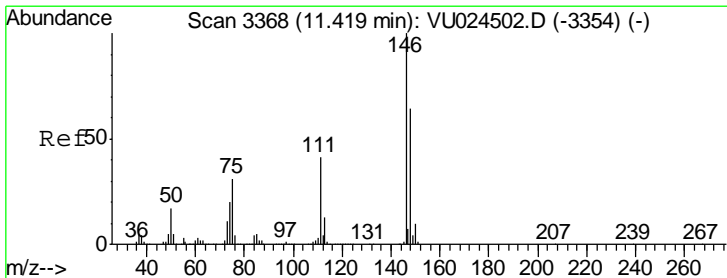
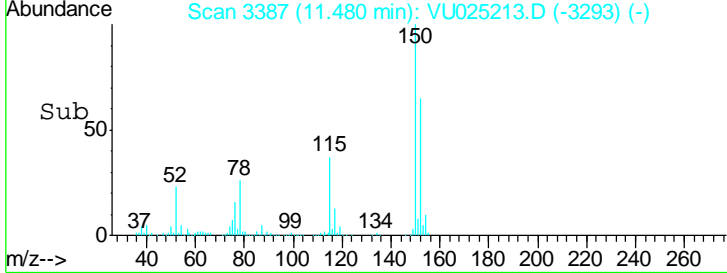
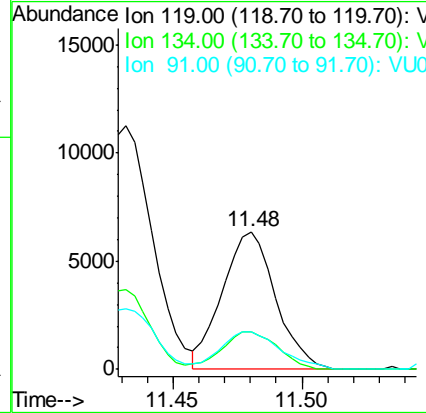
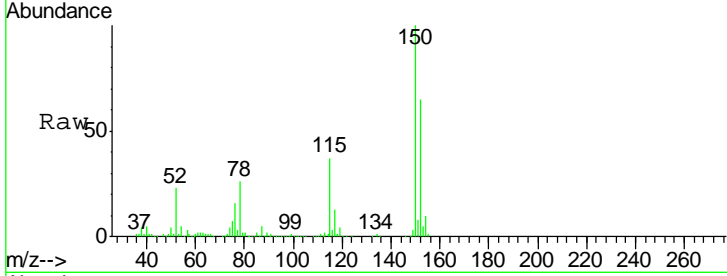




#86
 p-Isopropyltoluene
 Concen: 0.71 ug/l
 RT: 11.48 min Scan# 3387
 Delta R.T. 0.00 min
 Lab File: VU025213.D
 Acq: 05 Jul 2018 14:12

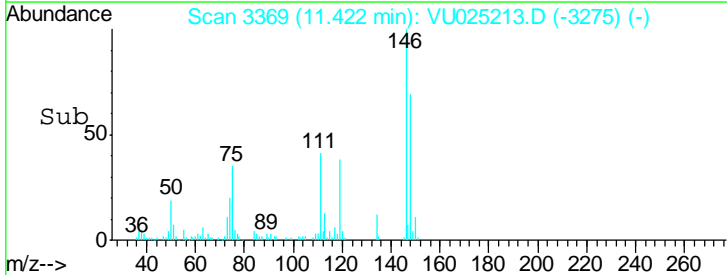
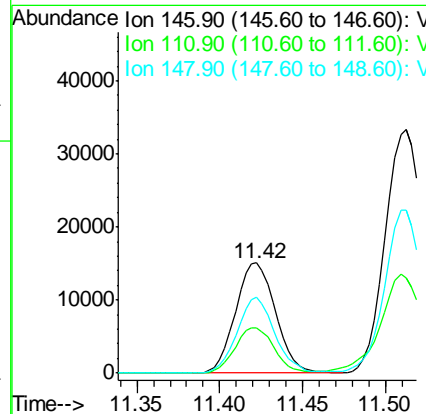
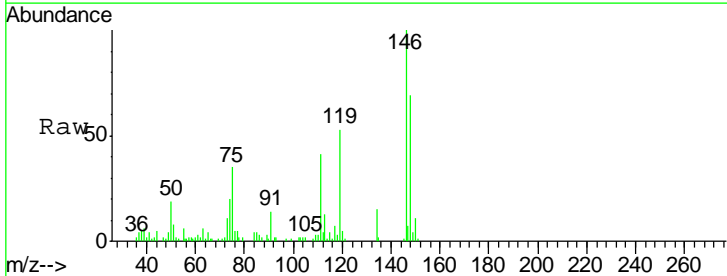
Instrument : MSVOA_U
 ClientSampleId : WPO21MW473-180628

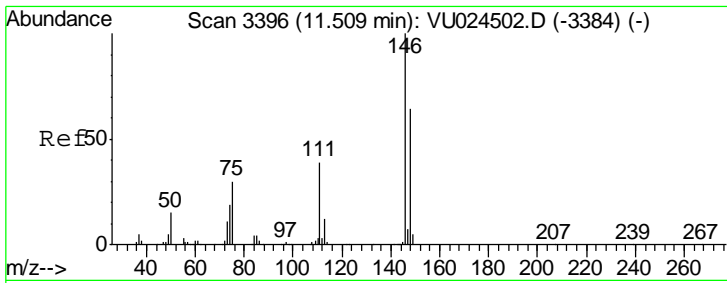
Tgt Ion	Resp	Lower	Upper
119	100		
134	28.6	12.9	38.6
91	30.8	12.0	36.1



#87
 1,3-Dichlorobenzene
 Concen: 3.90 ug/l
 RT: 11.42 min Scan# 3369
 Delta R.T. 0.00 min
 Lab File: VU025213.D
 Acq: 05 Jul 2018 14:12

Tgt Ion	Resp	Lower	Upper
146	100		
111	40.3	20.0	60.0
148	64.9	32.1	96.5

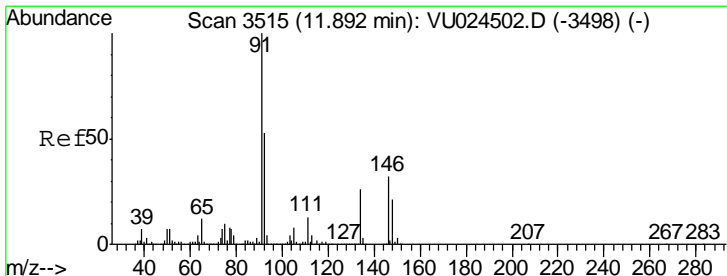
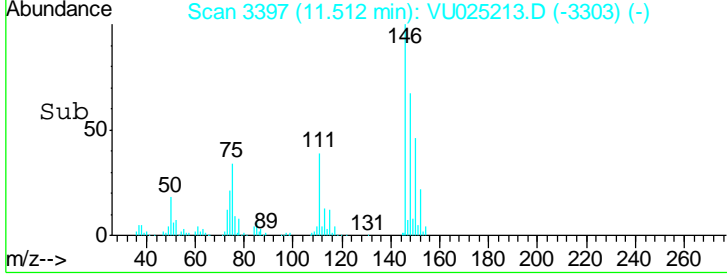
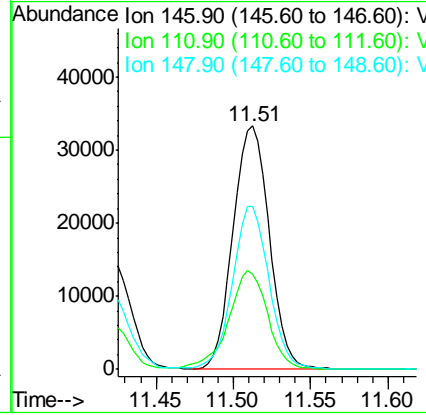
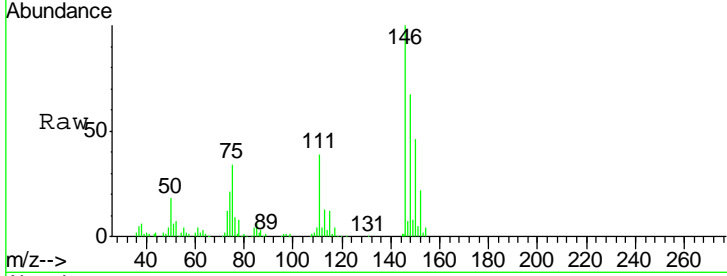




#88
 1,4-Dichlorobenzene
 Concen: 8.33 ug/l
 RT: 11.51 min Scan# 3397
 Delta R.T. 0.00 min
 Lab File: VU025213.D
 Acq: 05 Jul 2018 14:12

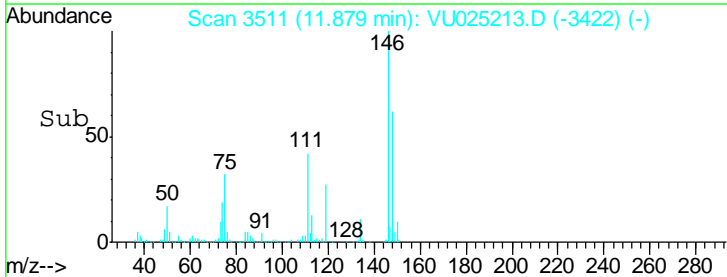
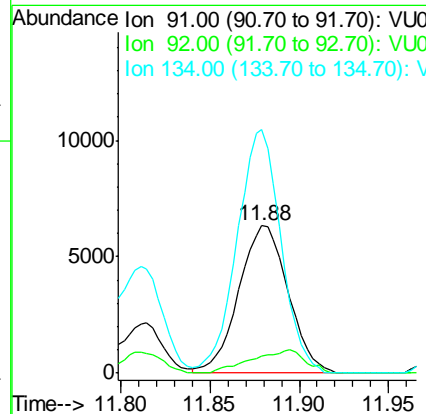
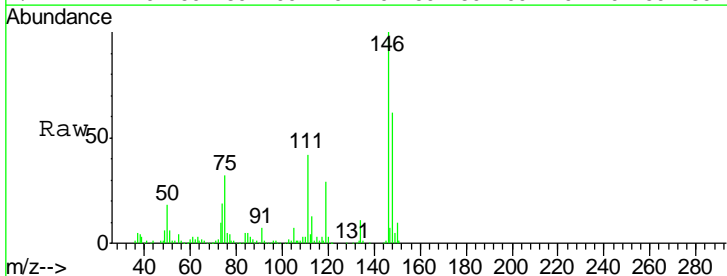
Instrument : MSVOA_U
 ClientSampleId : W/P021MW473-180628

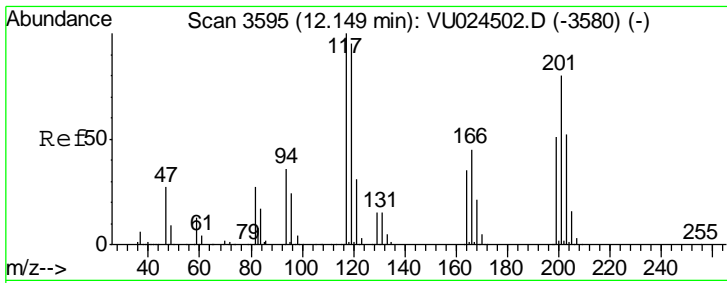
Tgt Ion	Resp	Lower	Upper
146	100		
111	43.6	19.5	58.5
148	67.2	32.4	97.0



#89
 n-Butylbenzene
 Concen: 1.07 ug/l
 RT: 11.88 min Scan# 3511
 Delta R.T. -0.01 min
 Lab File: VU025213.D
 Acq: 05 Jul 2018 14:12

Tgt Ion	Resp	Lower	Upper
91	100		
92	17.3	25.6	76.8#
134	146.3	12.3	36.8#

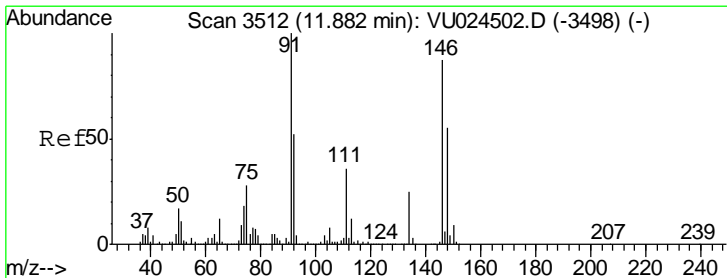
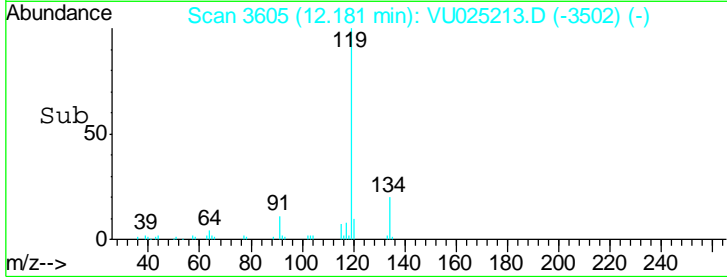
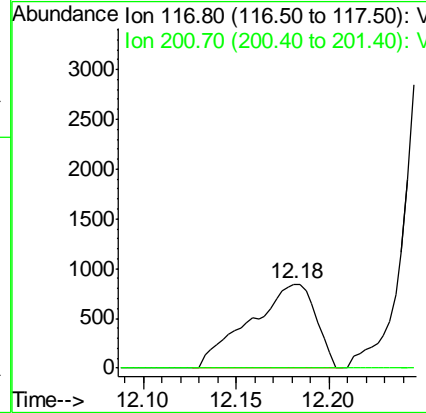
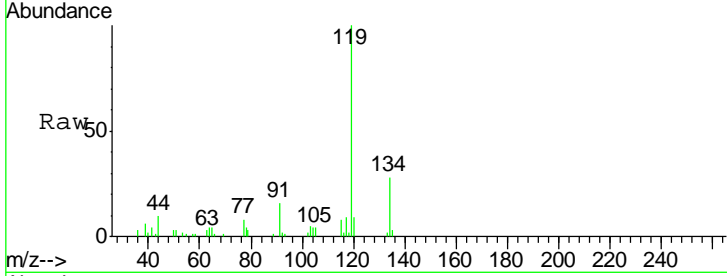




#90
 Hexachloroethane
 Concen: 0.83 ug/l
 RT: 12.18 min Scan# 3605
 Delta R.T. 0.03 min
 Lab File: VU025213.D
 Acq: 05 Jul 2018 14:12

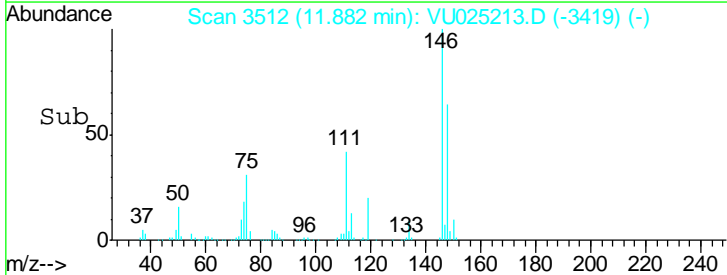
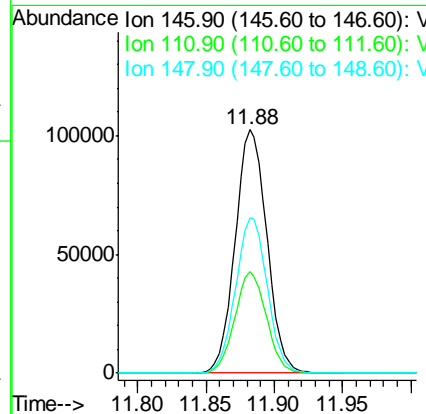
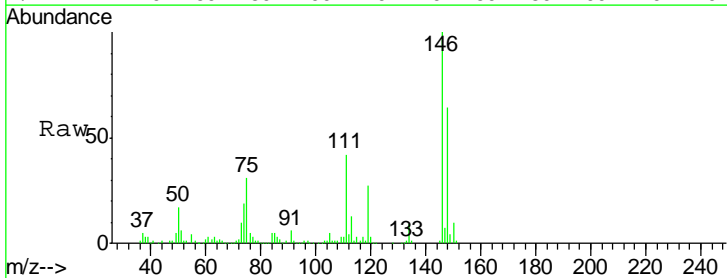
Instrument : MSVOA_U
 Client Sampled : WPO21MW473-180628

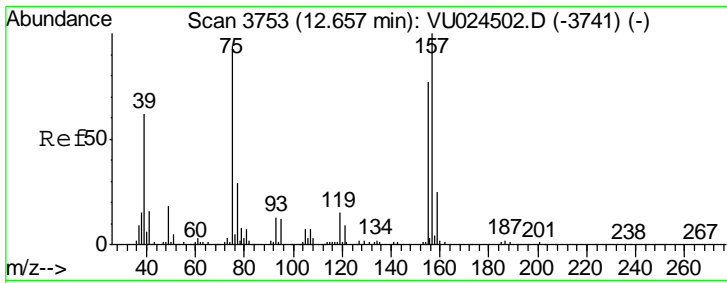
Tgt Ion: 117 Resp: 2090
 Ion Ratio Lower Upper
 117 100
 201 0.0 41.1 123.3#



#91
 1,2-Dichlorobenzene
 Concen: 25.56 ug/l
 RT: 11.88 min Scan# 3512
 Delta R.T. -0.00 min
 Lab File: VU025213.D
 Acq: 05 Jul 2018 14:12

Tgt Ion: 146 Resp: 165817
 Ion Ratio Lower Upper
 146 100
 111 41.2 20.5 61.6
 148 63.8 31.9 95.7

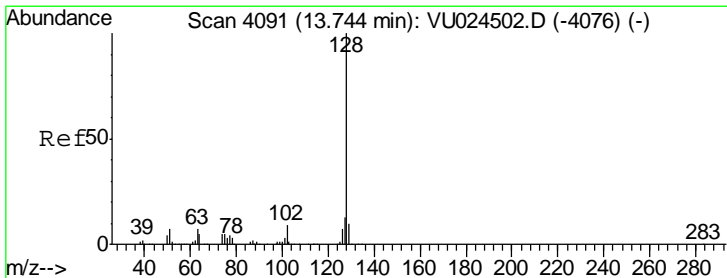
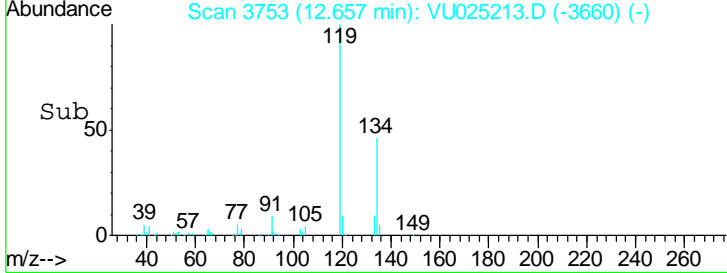
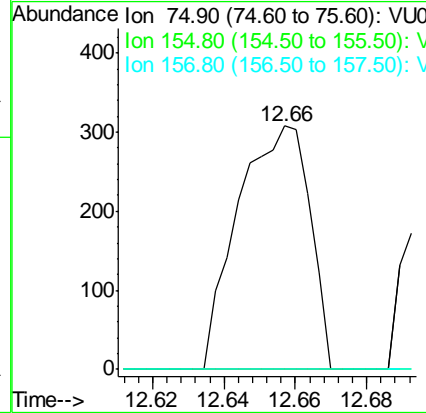
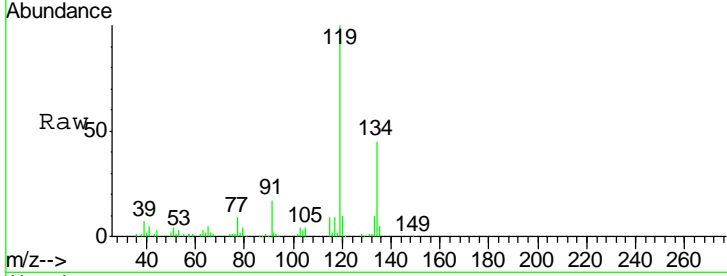




#92
 1,2-Dibromo-3-Chloropropane
 Concen: 0.33 ug/l
 RT: 12.66 min Scan# 3753
 Delta R.T. -0.00 min
 Lab File: VU025213.D
 Acq: 05 Jul 2018 14:12

Instrument : MSVOA_U
 ClientSampleId : WPO21MW473-180628

Tgt Ion	Resp	Lower	Upper
75	100		
155	0.0	40.4	121.2#
157	0.0	52.3	156.8#



#95
 Naphthalene
 Concen: 6.65 ug/l
 RT: 13.75 min Scan# 4092
 Delta R.T. 0.00 min
 Lab File: VU025213.D
 Acq: 05 Jul 2018 14:12

Tgt Ion	Resp	Lower	Upper
128	100		
127	12.6	10.6	16.0
129	11.6	8.6	12.8

