

Data Path : Z:\VOASRV\HPCHEM1\MSVOA U\DATA\VU070518\
 Data File : VU025219.D
 Acq On : 05 Jul 2018 16:38
 Operator : MD/SY
 Sample : J3808-14
 Misc : 5.0mL/MSVOA U/WATER
 ALS Vial : 17 Sample Multiplier: 1

Instrument :
 MSVOA_U
ClientSampleId :
 W/P021MW364-180628

Quant Time: Jul 06 06:39:25 2018
 Quant Method : Z:\VOASRV\HPCHEM1\MSVOA_U\METHOD\82U061318W.M
 Quant Title : SW846 8260
 QLast Update : Wed Jun 13 13:55:26 2018
 Response via : Initial Calibration

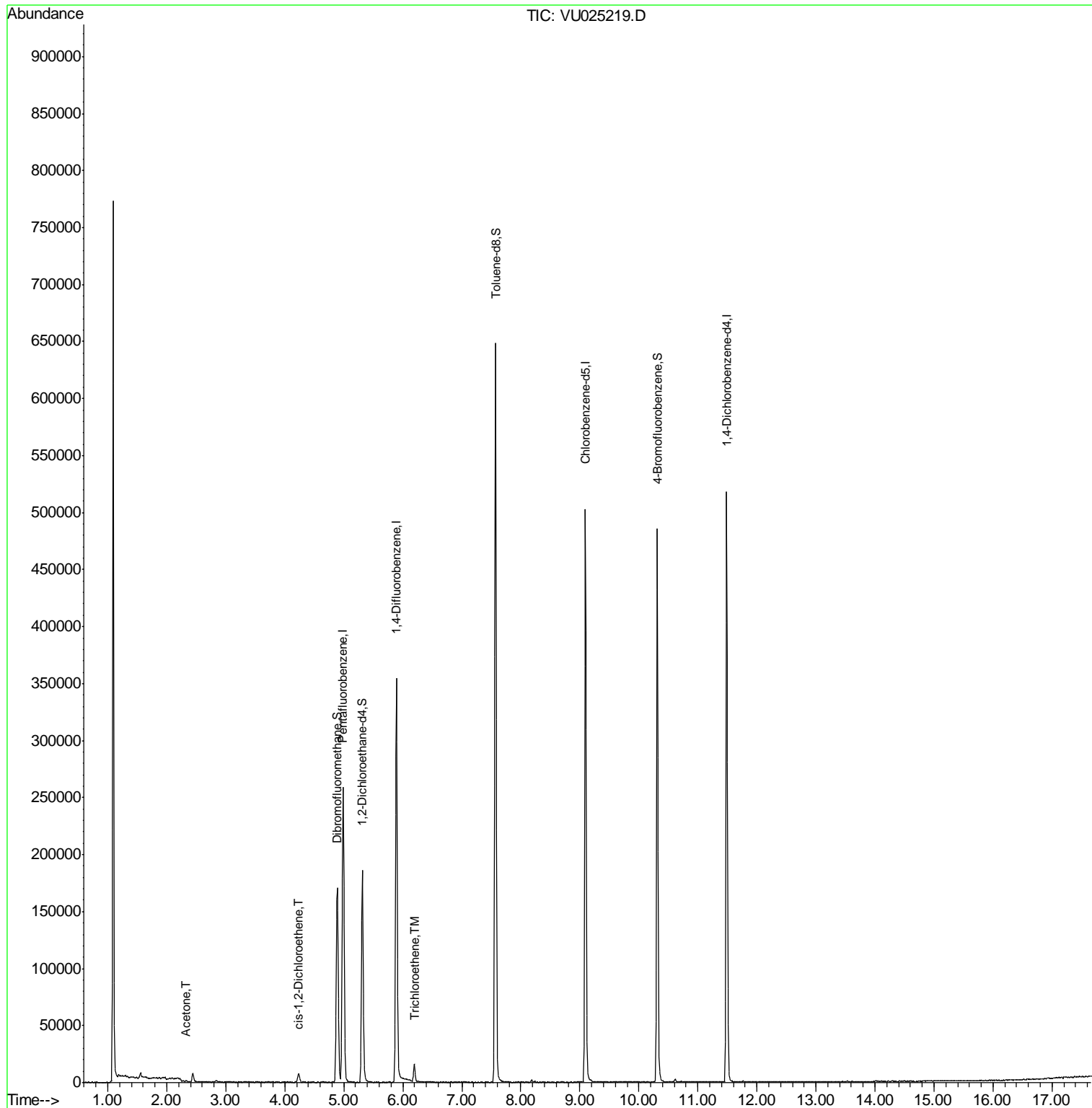
Internal Standards	R.T.	QIon	Response	Conc	Units	Dev(Min)
1) Pentafluorobenzene	4.99	168	197854	50.00	ug/l	0.00
34) 1,4-Difluorobenzene	5.89	114	295865	50.00	ug/l	0.00
63) Chlorobenzene-d5	9.09	117	276171	50.00	ug/l	0.00
72) 1,4-Dichlorobenzene-d4	11.49	152	137417	50.00	ug/l	0.00
System Monitoring Compounds						
33) 1,2-Dichloroethane-d4	5.31	65	151307	46.84	ug/l	0.00
Spiked Amount	50.000		Recovery	=	93.68%	
35) Dibromofluoromethane	4.89	113	116594	47.48	ug/l	0.00
Spiked Amount	50.000		Recovery	=	94.96%	
50) Toluene-d8	7.57	98	431771	48.21	ug/l	0.00
Spiked Amount	50.000		Recovery	=	96.42%	
62) 4-Bromofluorobenzene	10.31	95	155475	43.72	ug/l	0.00
Spiked Amount	50.000		Recovery	=	87.44%	
Target Compounds						
16) Acetone	2.32	43	1232	0.710	ug/l #	86
27) cis-1,2-Dichloroethene	4.24	96	4280	1.500	ug/l	84
44) Trichloroethene	6.19	130	5616	1.992	ug/l	91

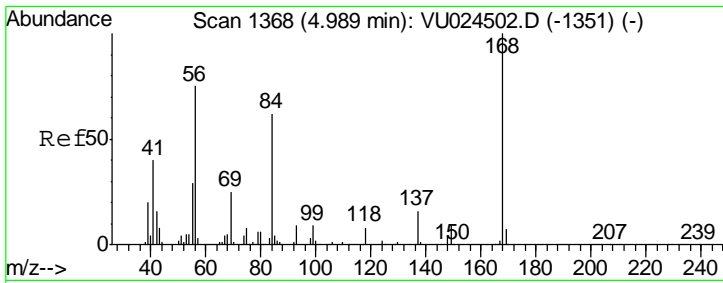
(#) = qualifier out of range (m) = manual integration (+) = signals summed

Data Path : Z:\VOASRV\HPCHEM1\MSVOA U\DATA\VU070518\
Data File : VU025219.D
Acq On : 05 Jul 2018 16:38
Operator : MD/SY
Sample : J3808-14
Misc : 5.0mL/MSVOA U/WATER
ALS Vial : 17 Sample Multiplier: 1

Instrument :
MSVOA_U
ClientSampleId :
WP021MW364-180628

Quant Time: Jul 06 06:39:25 2018
Quant Method : Z:\VOASRV\HPCHEM1\MSVOA_U\METHOD\82U061318W.M
Quant Title : SW846 8260
QLast Update : Wed Jun 13 13:55:26 2018
Response via : Initial Calibration

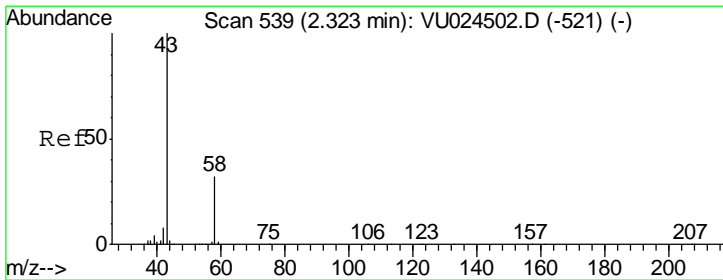
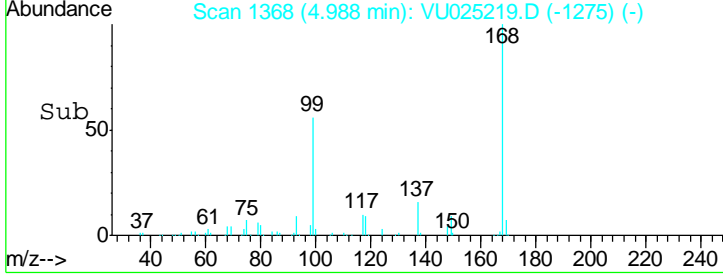
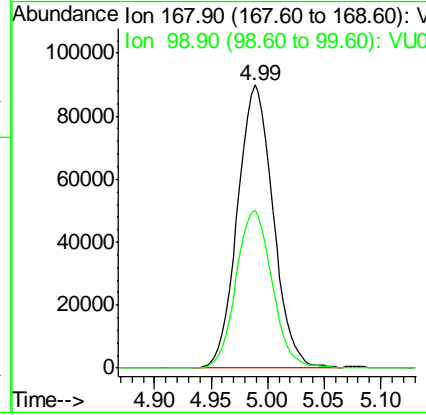
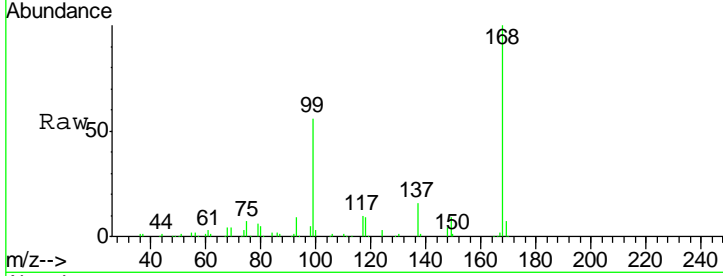




#1
 Pentafluorobenzene
 Concen: 50.000 ug/l
 RT: 4.99 min Scan# 1368
 Delta R.T. -0.00 min
 Lab File: VU025219.D
 Acq: 05 Jul 2018 16:38

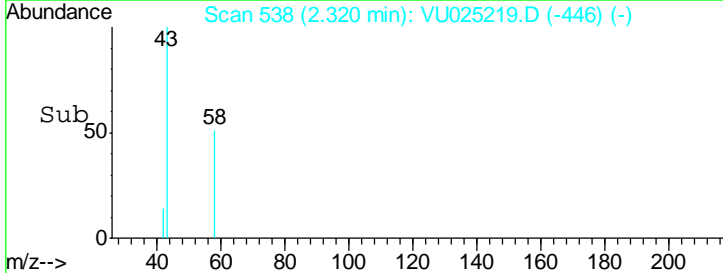
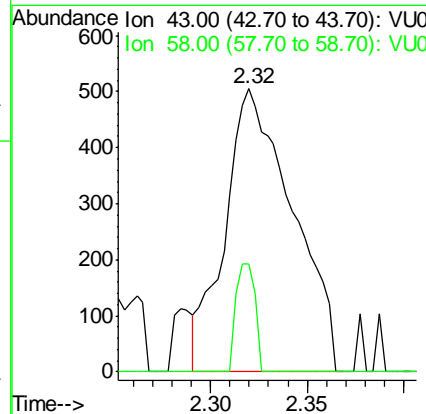
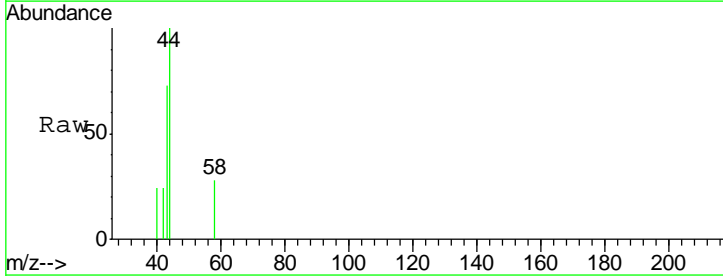
Instrument : MSVOA_U
 ClientSampleId : W/P021MW364-180628

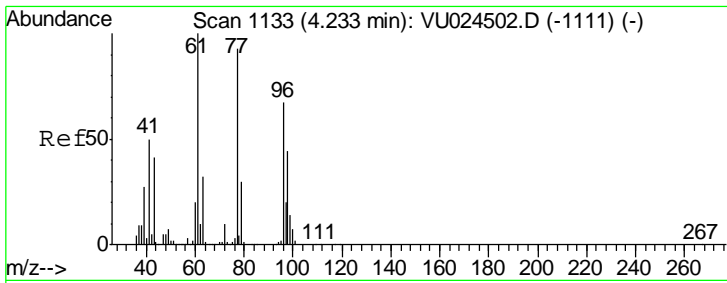
Tgt Ion	Resp	Lower	Upper
168	197854		
99	55.9	43.2	64.8



#16
 Acetone
 Concen: 0.710 ug/l
 RT: 2.32 min Scan# 538
 Delta R.T. -0.00 min
 Lab File: VU025219.D
 Acq: 05 Jul 2018 16:38

Tgt Ion	Resp	Lower	Upper
43	1232		
58	38.0	24.4	36.6#

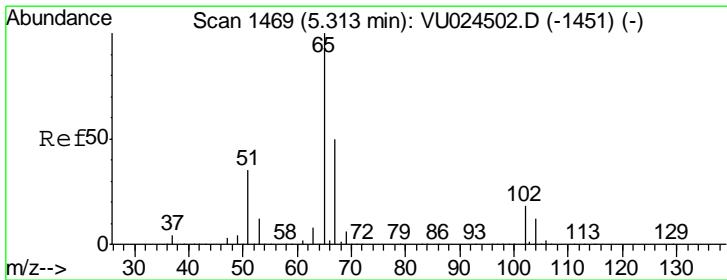
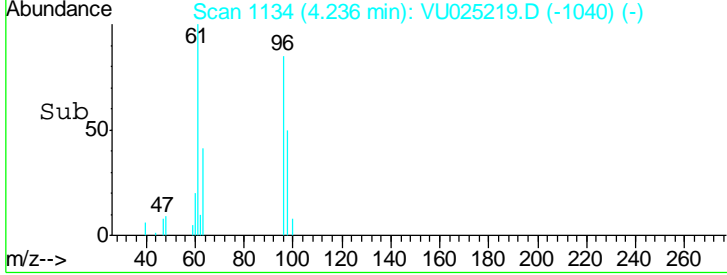
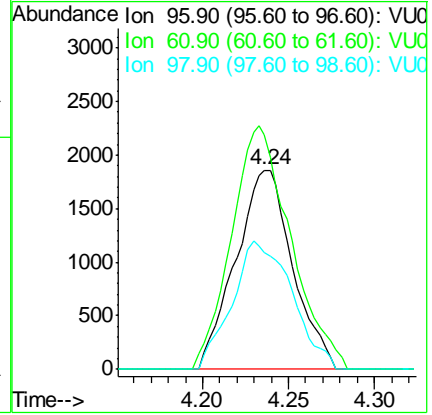
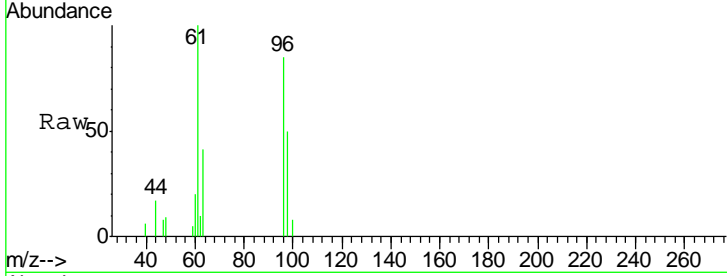




#27
 cis-1,2-Dichloroethene
 Concen: 1.500 ug/l
 RT: 4.24 min Scan# 1134
 Delta R.T. 0.00 min
 Lab File: VU025219.D
 Acq: 05 Jul 2018 16:38

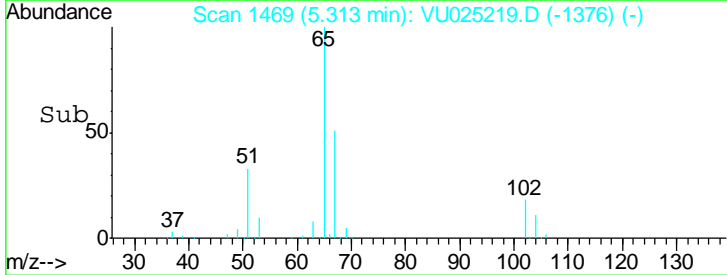
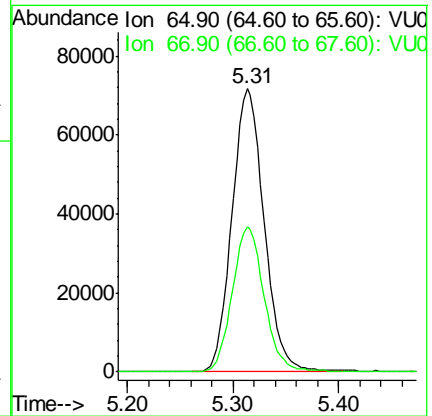
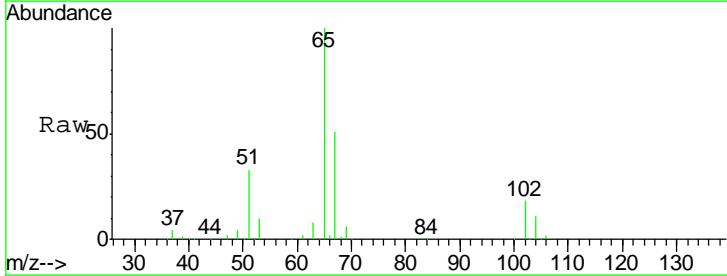
Instrument :
 MSVOA_U
 ClientSampleId :
 WPO21MW364-180628

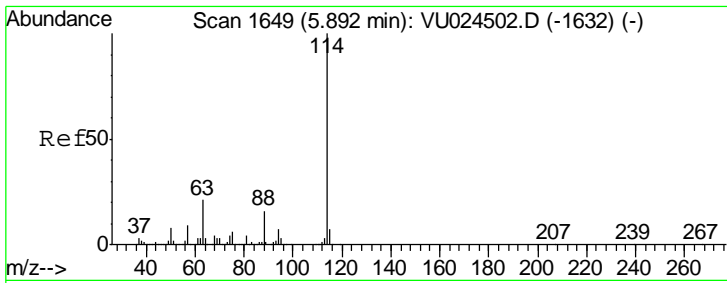
Tgt Ion	Resp	Lower	Upper
96	4280		
Ion Ratio			
96	100		
61	127.3	0.0	306.6
98	67.8	0.0	128.8



#33
 1,2-Dichloroethane-d4
 Concen: 46.844 ug/l
 RT: 5.31 min Scan# 1469
 Delta R.T. -0.00 min
 Lab File: VU025219.D
 Acq: 05 Jul 2018 16:38

Tgt Ion	Resp	Lower	Upper
65	151307		
Ion Ratio			
65	100		
67	50.7	0.0	107.0

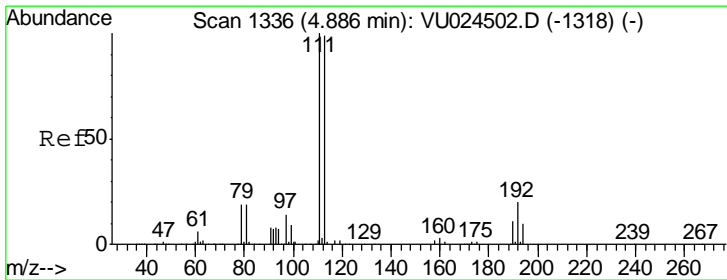
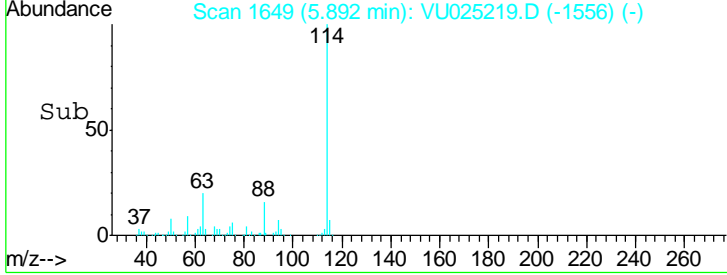
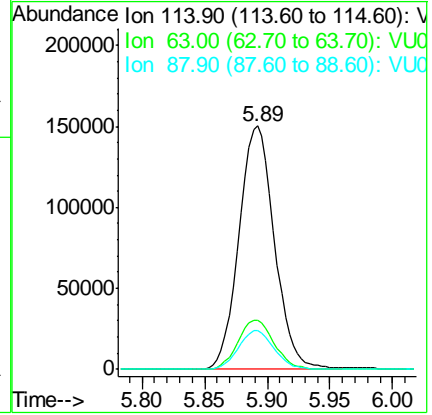
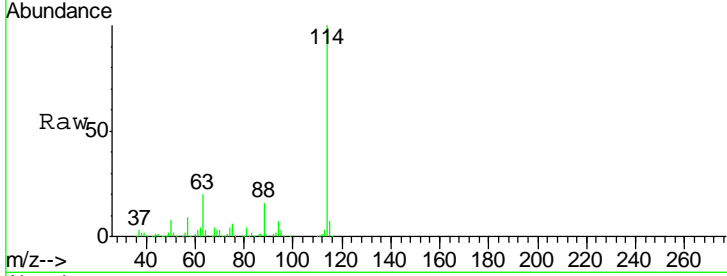




#34
 1,4-Difluorobenzene
 Concen: 50.000 ug/l
 RT: 5.89 min Scan# 1649
 Delta R.T. -0.00 min
 Lab File: VU025219.D
 Acq: 05 Jul 2018 16:38

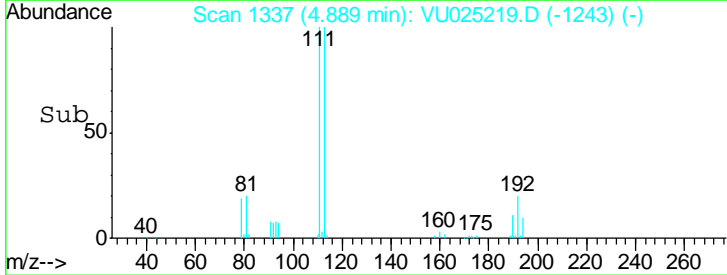
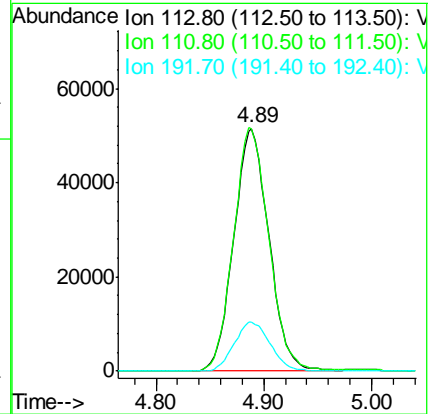
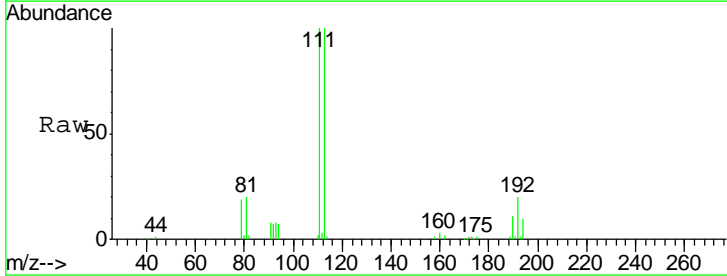
Instrument : MSVOA_U
 ClientSampleId : WPO21MW364-180628

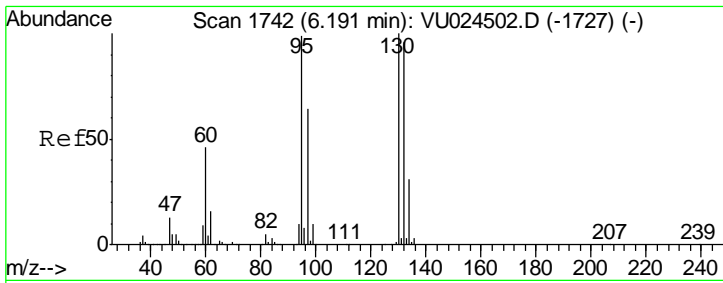
Tgt Ion	Resp	Lower	Upper
114	100		
63	20.3	0.0	45.4
88	15.9	0.0	31.0



#35
 Dibromofluoromethane
 Concen: 47.484 ug/l
 RT: 4.89 min Scan# 1337
 Delta R.T. 0.00 min
 Lab File: VU025219.D
 Acq: 05 Jul 2018 16:38

Tgt Ion	Resp	Lower	Upper
113	100		
111	101.0	82.2	123.4
192	20.7	16.2	24.4

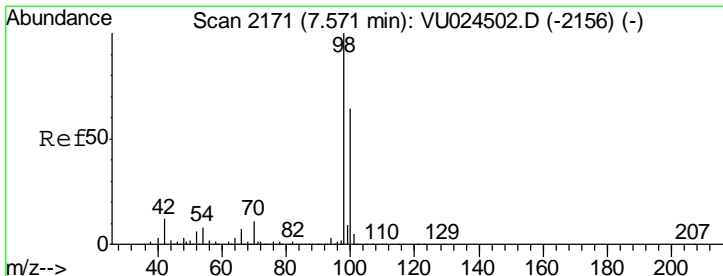
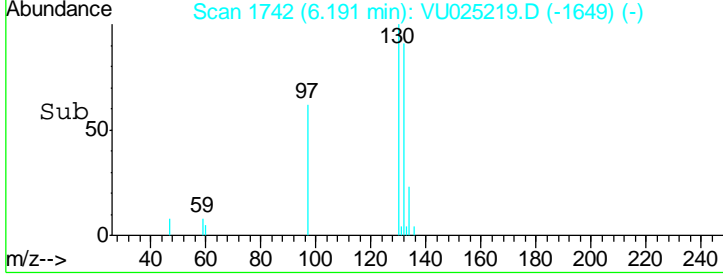
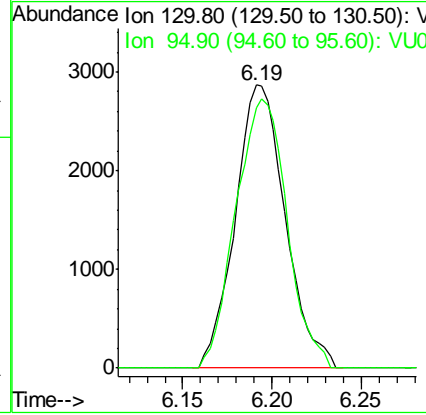
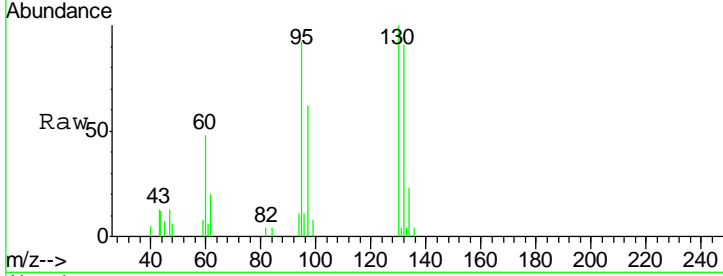




#44
 Trichloroethene
 Concen: 1.992 ug/l
 RT: 6.19 min Scan# 1742
 Delta R.T. -0.00 min
 Lab File: VU025219.D
 Acq: 05 Jul 2018 16:38

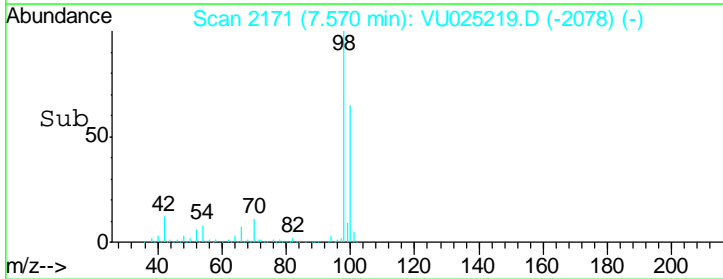
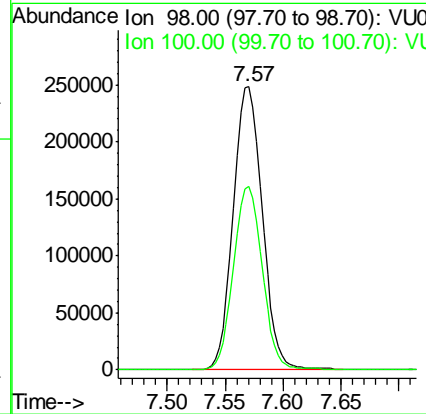
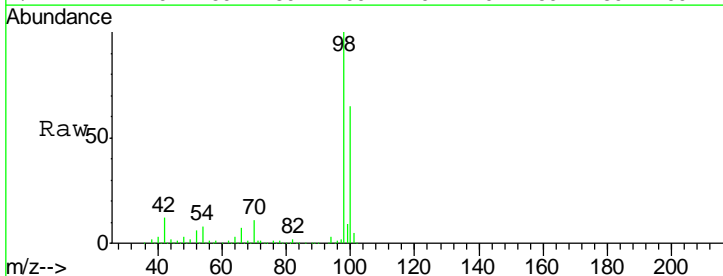
Instrument : MSVOA_U
 ClientSampled : W/P021MW364-180628

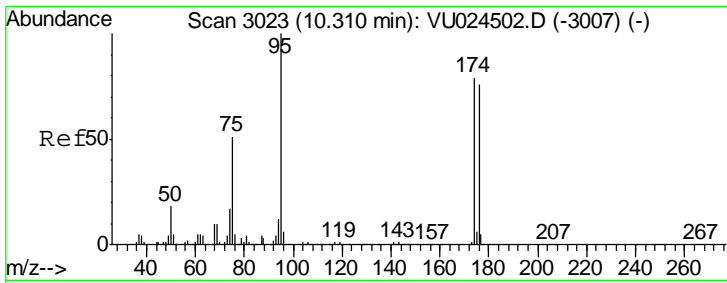
Tgt Ion	Resp	Lower	Upper
130	5616		
95	91.9	0.0	202.4



#50
 Toluene-d8
 Concen: 48.208 ug/l
 RT: 7.57 min Scan# 2171
 Delta R.T. -0.00 min
 Lab File: VU025219.D
 Acq: 05 Jul 2018 16:38

Tgt Ion	Resp	Lower	Upper
98	431771		
100	64.3	51.1	76.7

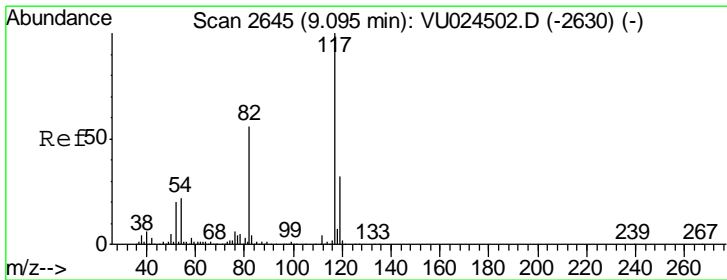
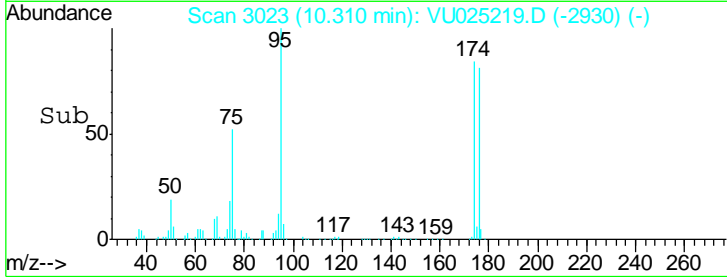
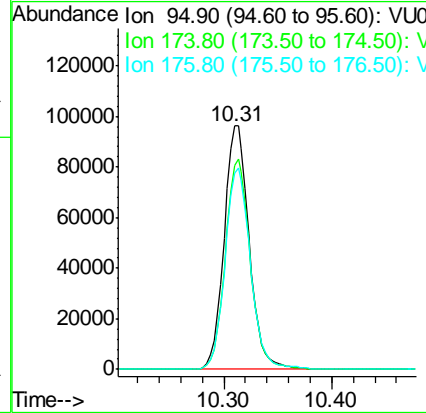
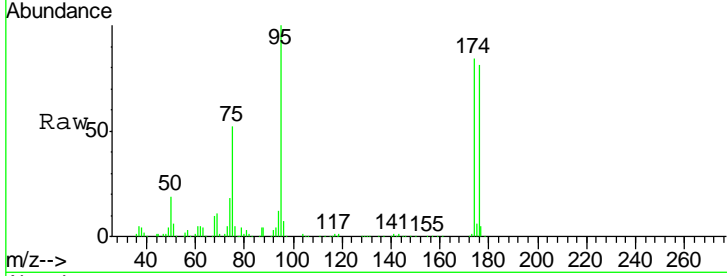




#62
 4-Bromofluorobenzene
 Concen: 43.721 ug/l
 RT: 10.31 min Scan# 3023
 Delta R.T. -0.00 min
 Lab File: VU025219.D
 Acq: 05 Jul 2018 16:38

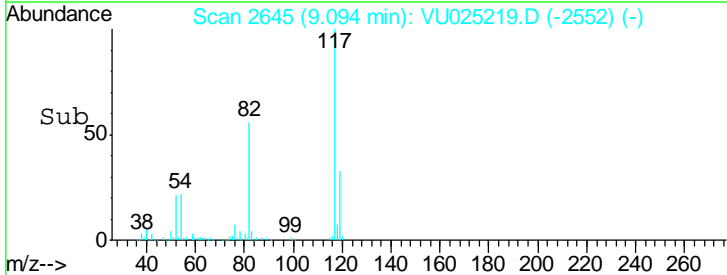
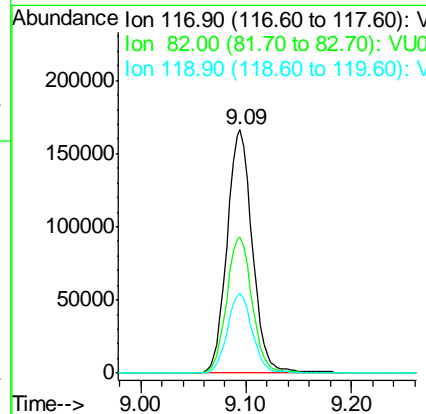
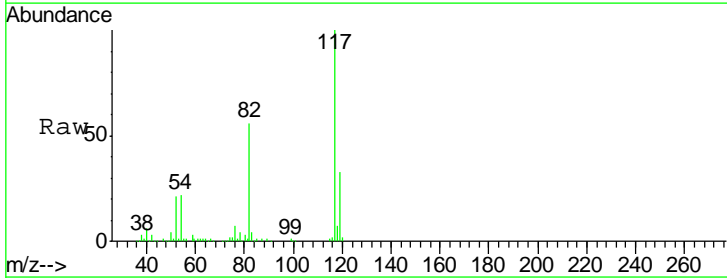
Instrument :
 MSVOA_U
 ClientSampleId :
 WPO21MW364-180628

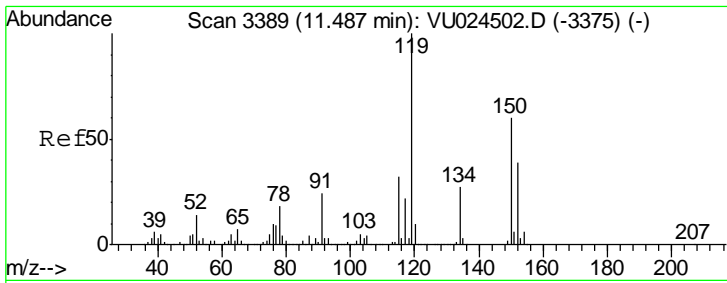
Tgt Ion	Resp	Lower	Upper
95	155475		
174	86.0	0.0	165.8
176	83.6	0.0	159.4



#63
 Chlorobenzene-d5
 Concen: 50.000 ug/l
 RT: 9.09 min Scan# 2645
 Delta R.T. -0.00 min
 Lab File: VU025219.D
 Acq: 05 Jul 2018 16:38

Tgt Ion	Resp	Lower	Upper
117	276171		
82	55.9	44.3	66.5
119	32.7	25.4	38.2





#72
 1,4-Dichlorobenzene-d4
 Concen: 50.000 ug/l
 RT: 11.49 min Scan# 3389
 Delta R.T. -0.00 min
 Lab File: VU025219.D
 Acq: 05 Jul 2018 16:38

Instrument : MSVOA_U
 ClientSampleId : WP021MW364-180628

Tot Ion	Resp	Lower	Upper
152	137417		
152	100		
115	58.8	43.0	129.0
150	157.0	0.0	354.0

