

Data Path : Z:\VOASRV\HPCHEM1\MSVOA U\DATA\VU070718\
 Data File : VU025250.D
 Acq On : 06 Jul 2018 19:17
 Operator : MD/SY
 Sample : J3808-13
 Misc : 5.0mL/MSVOA U/WATER
 ALS Vial : 13 Sample Multiplier: 1

Instrument :
 MSVOA_U
 ClientSampleId :
 W/P021MW004-180628

Quant Time: Jul 07 00:20:01 2018
 Quant Method : Z:\VOASRV\HPCHEM1\MSVOA_U\METHOD\82U061318W.M
 Quant Title : SW846 8260
 QLast Update : Wed Jun 13 13:55:26 2018
 Response via : Initial Calibration

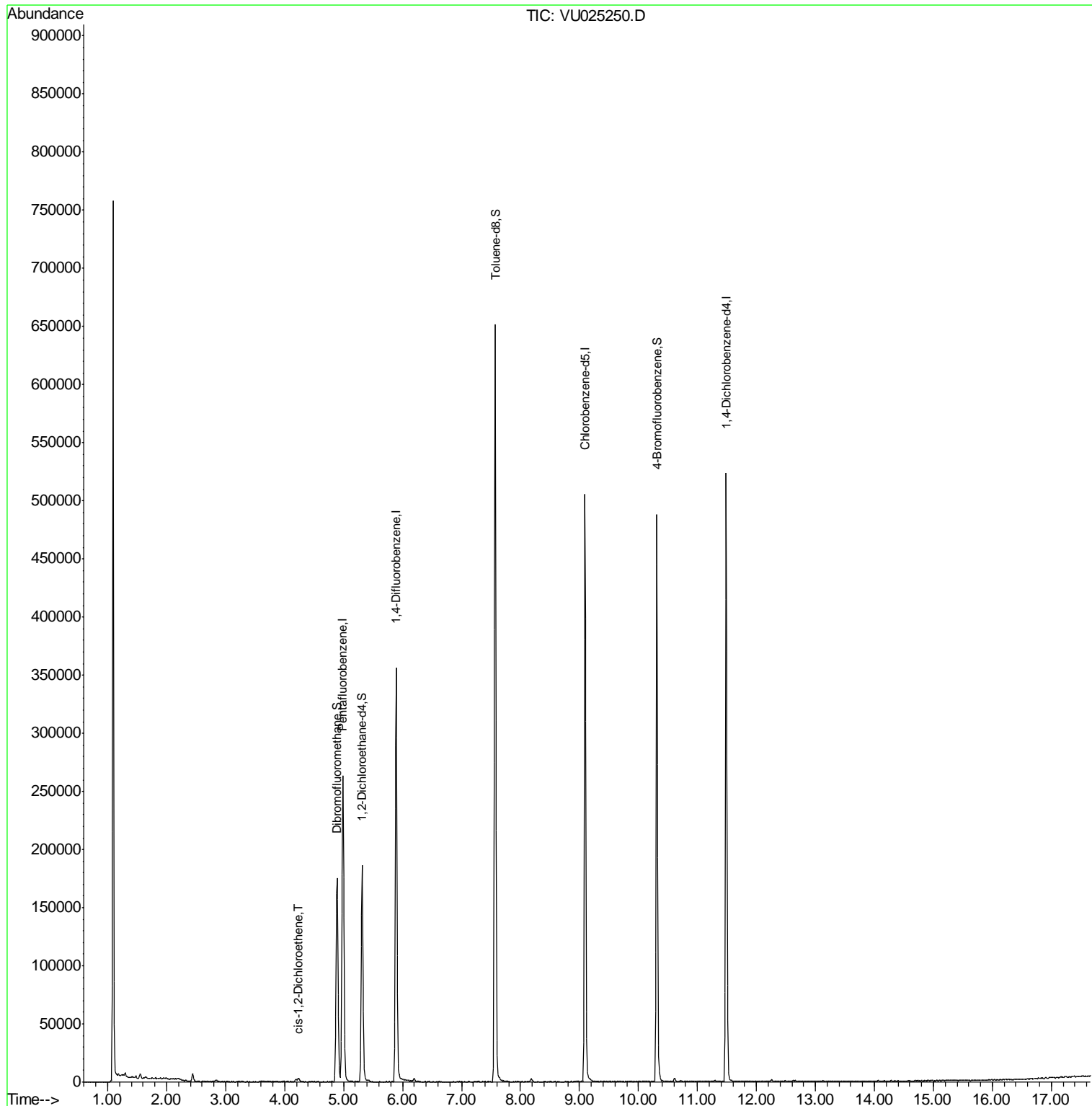
Internal Standards	R.T.	QIon	Response	Conc	Units	Dev(Min)
1) Pentafluorobenzene	4.99	168	200888	50.00	ug/l	0.00
34) 1,4-Difluorobenzene	5.89	114	301605	50.00	ug/l	0.00
63) Chlorobenzene-d5	9.09	117	282048	50.00	ug/l	0.00
72) 1,4-Dichlorobenzene-d4	11.49	152	142672	50.00	ug/l	0.00
System Monitoring Compounds						
33) 1,2-Dichloroethane-d4	5.31	65	155162	47.31	ug/l	0.00
Spiked Amount	50.000		Recovery	=	94.62%	
35) Dibromofluoromethane	4.89	113	118278	47.25	ug/l	0.00
Spiked Amount	50.000		Recovery	=	94.50%	
50) Toluene-d8	7.57	98	436926	47.85	ug/l	0.00
Spiked Amount	50.000		Recovery	=	95.70%	
62) 4-Bromofluorobenzene	10.31	95	158848	43.82	ug/l	0.00
Spiked Amount	50.000		Recovery	=	87.64%	
Target Compounds						Qvalue
27) cis-1,2-Dichloroethene	4.24	96	1627	0.562	ug/l	82

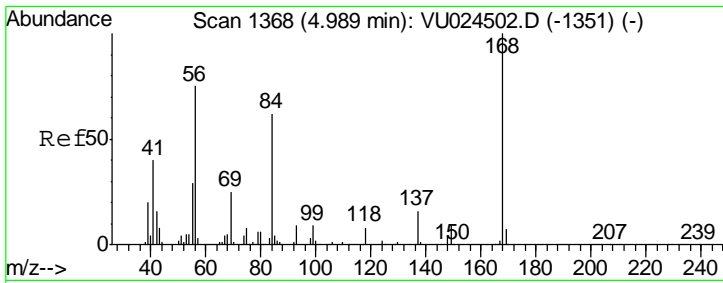
(#) = qualifier out of range (m) = manual integration (+) = signals summed

Data Path : Z:\VOASRV\HPCHEM1\MSVOA U\DATA\VU070718\
 Data File : VU025250.D
 Acq On : 06 Jul 2018 19:17
 Operator : MD/SY
 Sample : J3808-13
 Misc : 5.0mL/MSVOA U/WATER
 ALS Vial : 13 Sample Multiplier: 1

Instrument :
 MSVOA_U
 ClientSampleId :
 W/P021MW004-180628

Quant Time: Jul 07 00:20:01 2018
 Quant Method : Z:\VOASRV\HPCHEM1\MSVOA_U\METHOD\82U061318W.M
 Quant Title : SW846 8260
 QLast Update : Wed Jun 13 13:55:26 2018
 Response via : Initial Calibration

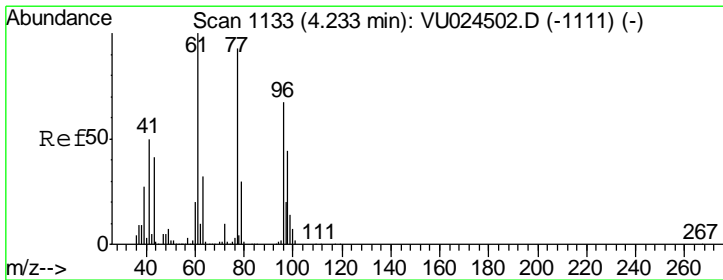
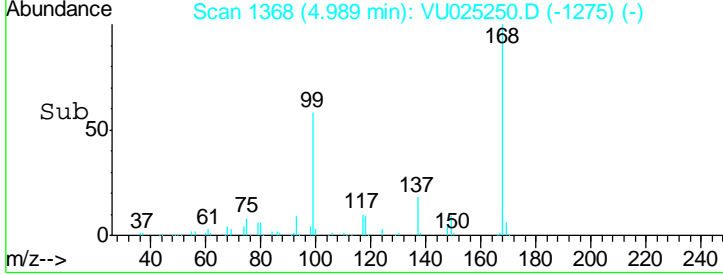
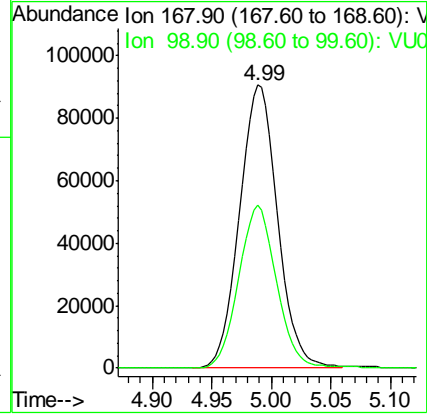
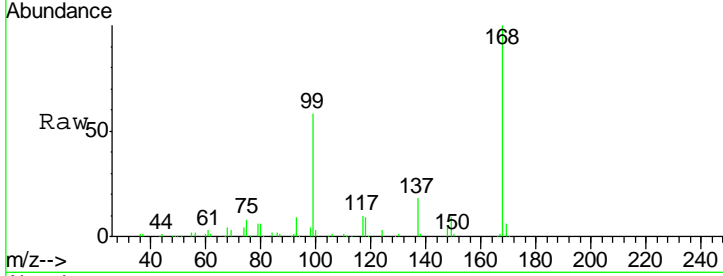




#1
 Pentafluorobenzene
 Concen: 50.000 ug/l
 RT: 4.99 min Scan# 1368
 Delta R.T. 0.00 min
 Lab File: VU025250.D
 Acq: 06 Jul 2018 19:17

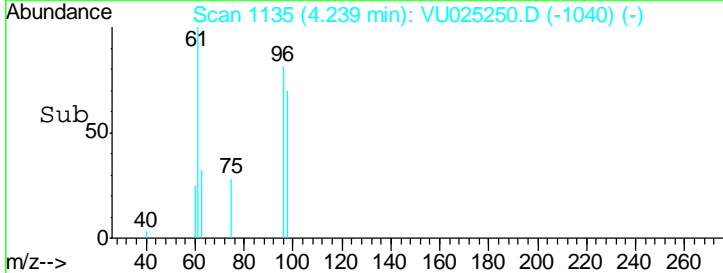
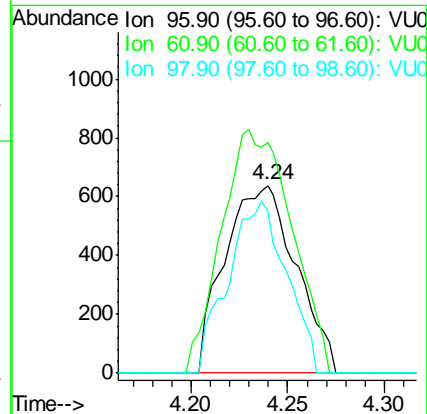
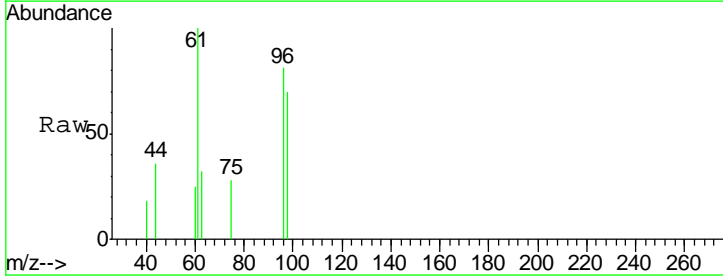
Instrument :
 MSVOA_U
 ClientSampleId :
 WPO21MW004-180628

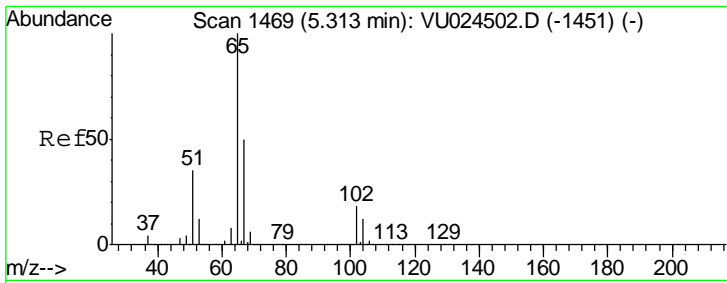
Tgt Ion: 168 Resp: 200888
 Ion Ratio Lower Upper
 168 100
 99 57.6 43.2 64.8



#27
 cis-1,2-Dichloroethene
 Concen: 0.562 ug/l
 RT: 4.24 min Scan# 1135
 Delta R.T. 0.01 min
 Lab File: VU025250.D
 Acq: 06 Jul 2018 19:17

Tgt Ion: 96 Resp: 1627
 Ion Ratio Lower Upper
 96 100
 61 128.4 0.0 306.6
 98 75.1 0.0 128.8

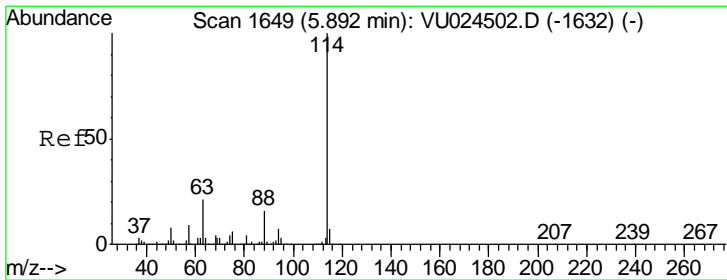
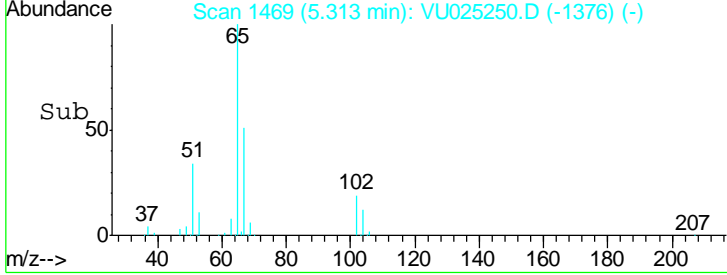
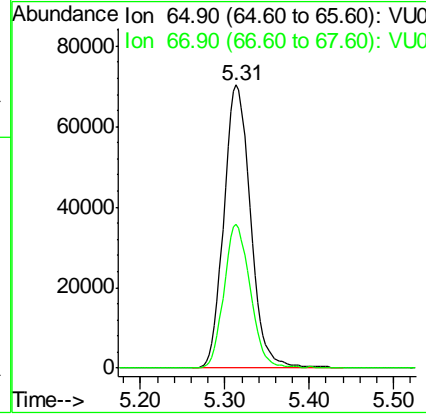
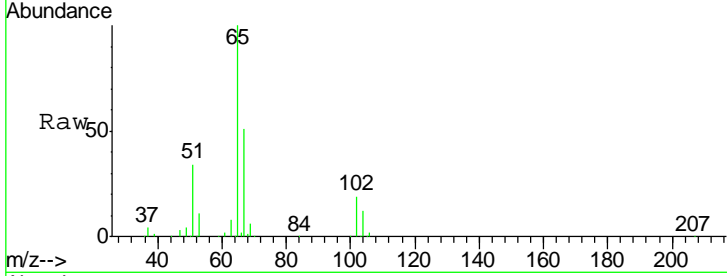




#33
 1,2-Dichloroethane-d4
 Concen: 47.312 ug/l
 RT: 5.31 min Scan# 1469
 Delta R.T. 0.00 min
 Lab File: VU025250.D
 Acq: 06 Jul 2018 19:17

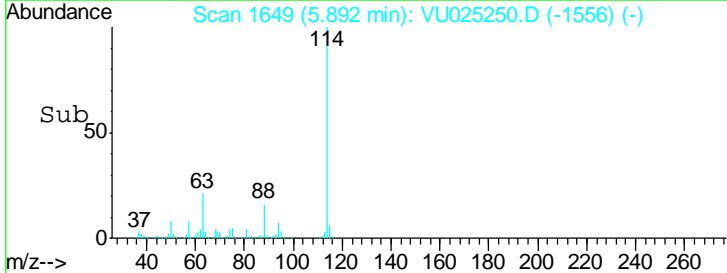
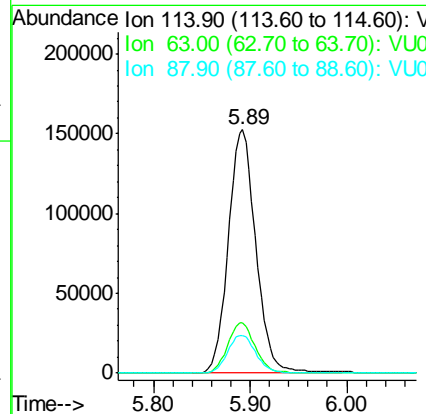
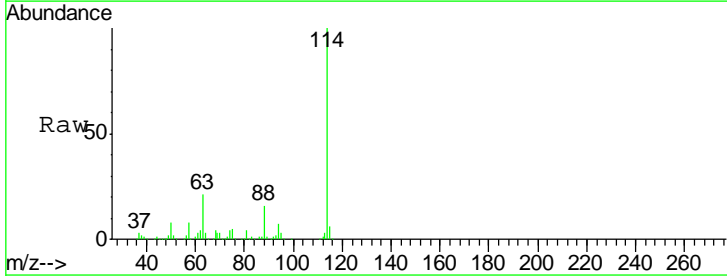
Instrument :
 MSVOA_U
ClientSampled :
 W/P021MW004-180628

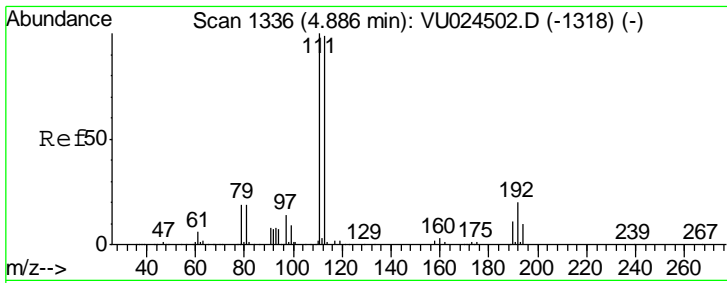
Tgt Ion	Resp	Lower	Upper
65	155162		
67	50.1	0.0	107.0



#34
 1,4-Difluorobenzene
 Concen: 50.000 ug/l
 RT: 5.89 min Scan# 1649
 Delta R.T. 0.00 min
 Lab File: VU025250.D
 Acq: 06 Jul 2018 19:17

Tgt Ion	Resp	Lower	Upper
114	301605		
63	20.9	0.0	45.4
88	15.6	0.0	31.0

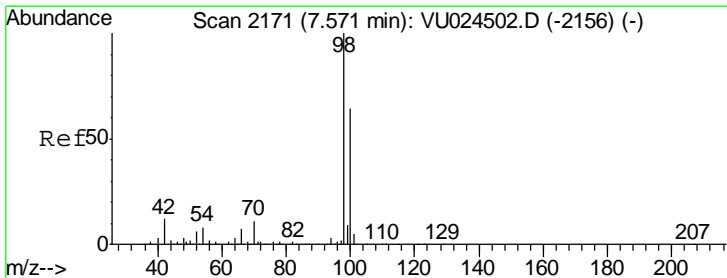
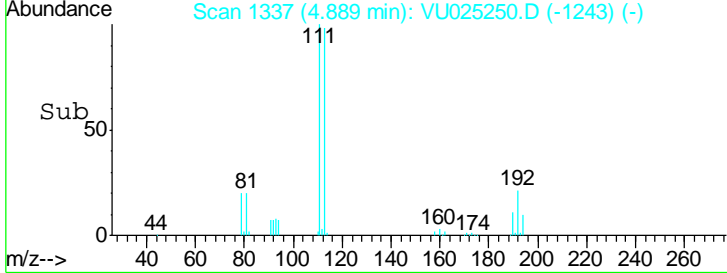
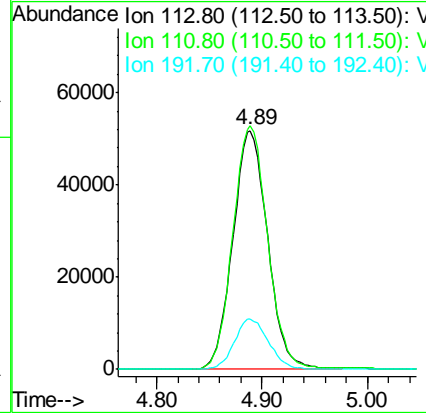
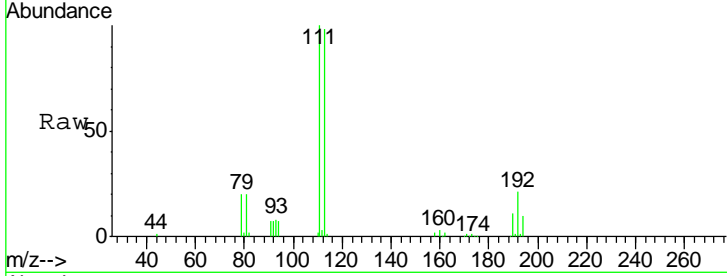




#35
 Dibromofluoromethane
 Concen: 47.253 ug/l
 RT: 4.89 min Scan# 1337
 Delta R.T. 0.00 min
 Lab File: VU025250.D
 Acq: 06 Jul 2018 19:17

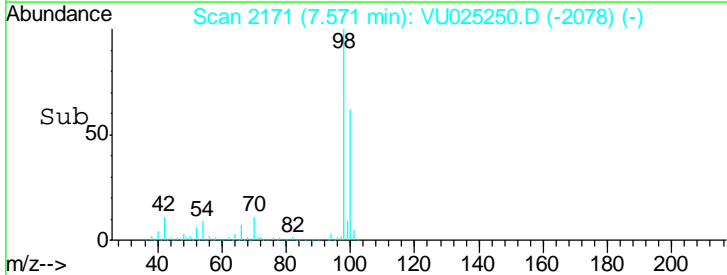
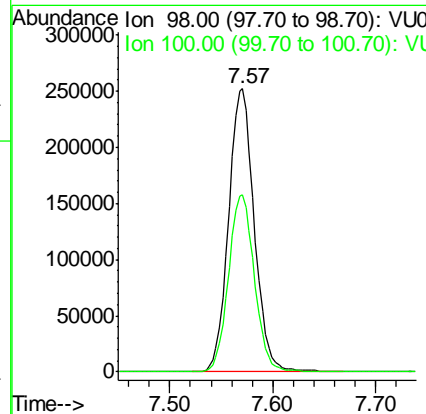
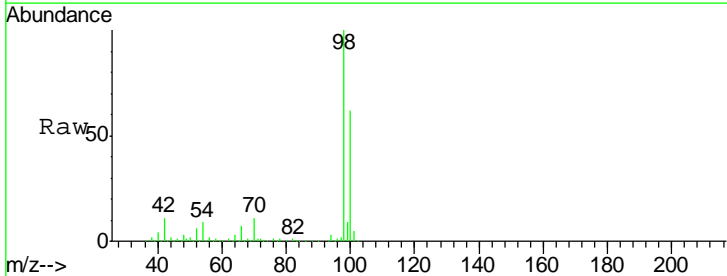
Instrument :
 MSVOA_U
 ClientSampled :
 W/P021MW004-180628

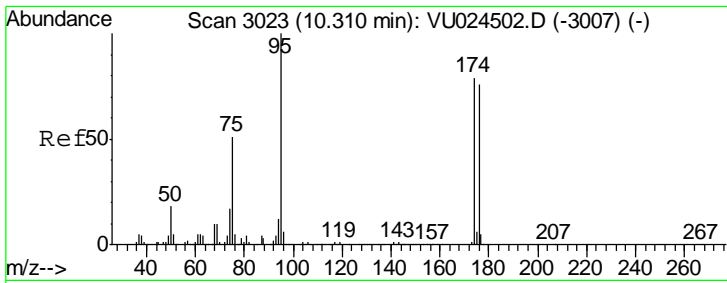
Tgt Ion	Resp	Lower	Upper
113	118278		
111	101.8	82.2	123.4
192	20.8	16.2	24.4



#50
 Toluene-d8
 Concen: 47.855 ug/l
 RT: 7.57 min Scan# 2171
 Delta R.T. 0.00 min
 Lab File: VU025250.D
 Acq: 06 Jul 2018 19:17

Tgt Ion	Resp	Lower	Upper
98	436926		
100	63.3	51.1	76.7

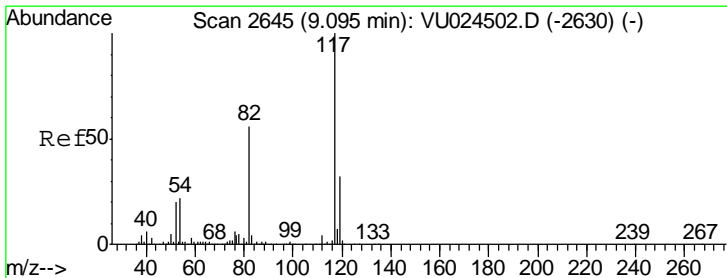
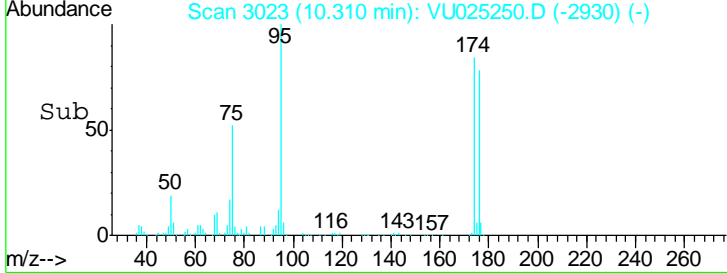
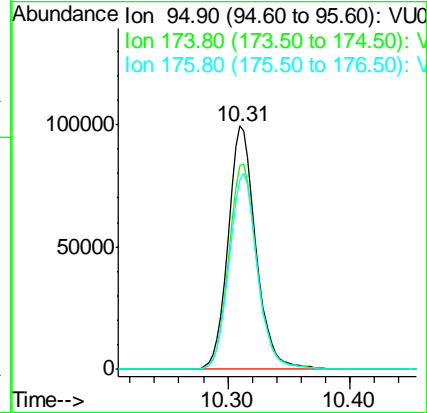
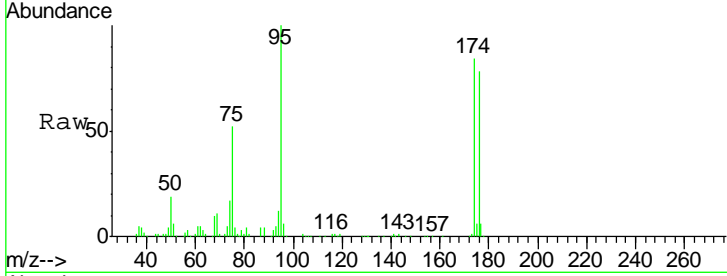




#62
 4-Bromofluorobenzene
 Concen: 43.819 ug/l
 RT: 10.31 min Scan# 3023
 Delta R.T. 0.00 min
 Lab File: VU025250.D
 Acq: 06 Jul 2018 19:17

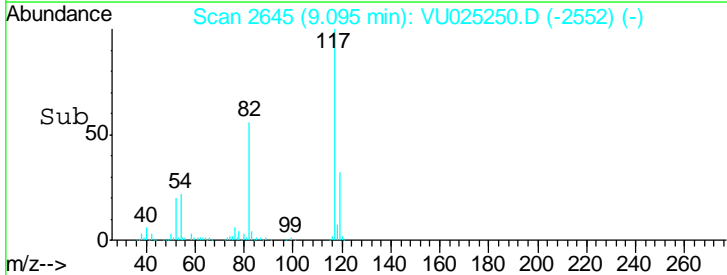
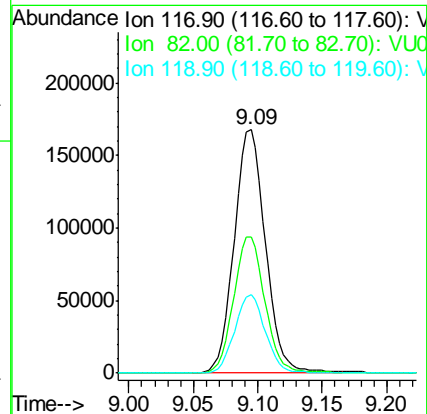
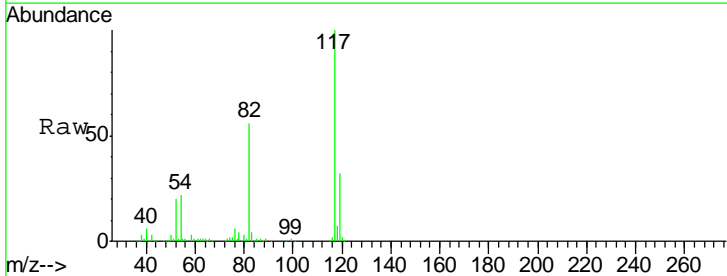
Instrument :
 MSVOA_U
 ClientSampleId :
 WPO21MW004-180628

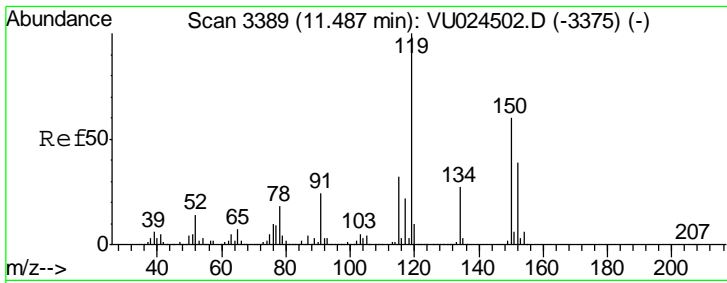
Tgt Ion	Resp	Lower	Upper
95	158848		
174	86.2	0.0	165.8
176	82.2	0.0	159.4



#63
 Chlorobenzene-d5
 Concen: 50.000 ug/l
 RT: 9.09 min Scan# 2645
 Delta R.T. 0.00 min
 Lab File: VU025250.D
 Acq: 06 Jul 2018 19:17

Tgt Ion	Resp	Lower	Upper
117	282048		
82	56.0	44.3	66.5
119	32.1	25.4	38.2





#72
 1,4-Dichlorobenzene-d4
 Concen: 50.000 ug/l
 RT: 11.49 min Scan# 3389
 Delta R.T. 0.00 min
 Lab File: VU025250.D
 Acq: 06 Jul 2018 19:17

Instrument : MSVOA_U
 ClientSampleId : WP021MW004-180628

Tot Ion:152 Resp: 142672

Ion	Ratio	Lower	Upper
152	100		
115	57.0	43.0	129.0
150	154.1	0.0	354.0

