

Data Path : Z:\VOASRV\HPCHEM1\MSVOA\_U\DATA\VU070820\  
 Data File : VU039367.D  
 Acq On : 09 Jul 2020 00:02  
 Operator : SY/MD  
 Sample : L3243-11  
 Misc : 25.0mL/MSVOA\_U/WATER  
 ALS Vial : 1 Sample Multiplier: 1

**Instrument :**  
 MSVOA\_U  
**ClientSampled :**  
 F4A75

**Manual Integrations**  
**APPROVED**  
 MMDadoda  
 7/10/2020 12:17:37 PM

Quant Time: Jul 10 09:24:12 2020  
 Quant Method : Z:\VOASRV\HPCHEM1\MSVOA\_U\METHOD\SOMUTR070720WMA.M  
 Quant Title : TRACE VOA SOM01.0  
 QLast Update : Thu Jul 09 05:48:41 2020  
 Response via : Initial Calibration

Internal Standards	R.T.	QIon	Response	Conc	Units	Dev(Min)
1) 1,4-Difluorobenzene	6.26	114	104208	5.00	ug/L	0.00
28) Chlorobenzene-d5	9.42	117	98167	5.00	ug/L	0.00
60) 1,4-Dichlorobenzene-d4	11.81	152	45602	5.00	ug/L	0.00

System Monitoring Compounds

4) Vinyl Chloride-d3	1.61	65	26890	4.45	ug/L	0.00
Spiked Amount	5.000	Range	40 - 130	Recovery	=	89.00%
7) Chloroethane-d5	1.93	69	30076	4.87	ug/L	0.00
Spiked Amount	5.000	Range	65 - 130	Recovery	=	97.40%
11) 1,1-Dichloroethene-d2	2.58	63	43910	3.70	ug/L	0.00
Spiked Amount	5.000	Range	60 - 125	Recovery	=	74.00%
20) 2-Butanone-d5	4.66	46	160027	57.91	ug/L	0.00
Spiked Amount	50.000	Range	40 - 130	Recovery	=	115.82%
24) Chloroform-d	5.08	84	67181	5.22	ug/L	0.00
Spiked Amount	5.000	Range	70 - 125	Recovery	=	104.40%
26) 1,2-Dichloroethane-d4	5.72	65	43452	5.38	ug/L	0.00
Spiked Amount	5.000	Range	70 - 130	Recovery	=	107.60%
32) Benzene-d6	5.75	84	130946	5.54	ug/L	0.00
Spiked Amount	5.000	Range	70 - 125	Recovery	=	110.80%
36) 1,2-Dichloropropane-d6	6.71	67	45204	5.44	ug/L	0.00
Spiked Amount	5.000	Range	60 - 140	Recovery	=	108.80%
41) Toluene-d8	7.91	98	116250	5.67	ug/L	0.00
Spiked Amount	5.000	Range	70 - 130	Recovery	=	113.40%
43) trans-1,3-Dichloropropene-	8.19	79	18535	5.06	ug/L	0.00
Spiked Amount	5.000	Range	55 - 130	Recovery	=	101.20%
46) 2-Hexanone-d5	8.64	63	115702	53.20	ug/L	0.00
Spiked Amount	50.000	Range	45 - 130	Recovery	=	106.40%
57) 1,1,2,2-Tetrachloroethane-	10.76	84	43431	5.28	ug/L	0.00
Spiked Amount	5.000	Range	65 - 120	Recovery	=	105.60%
64) 1,2-Dichlorobenzene-d4	12.19	152	46975	5.77	ug/L	0.00
Spiked Amount	5.000	Range	80 - 120	Recovery	=	115.40%

Target Compounds	R.T.	QIon	Response	Conc	Units	Qvalue
13) Acetone	2.66	43	2846m	1.908	ug/L	
47) Tetrachloroethene	8.56	164	905	0.171	ug/L	93

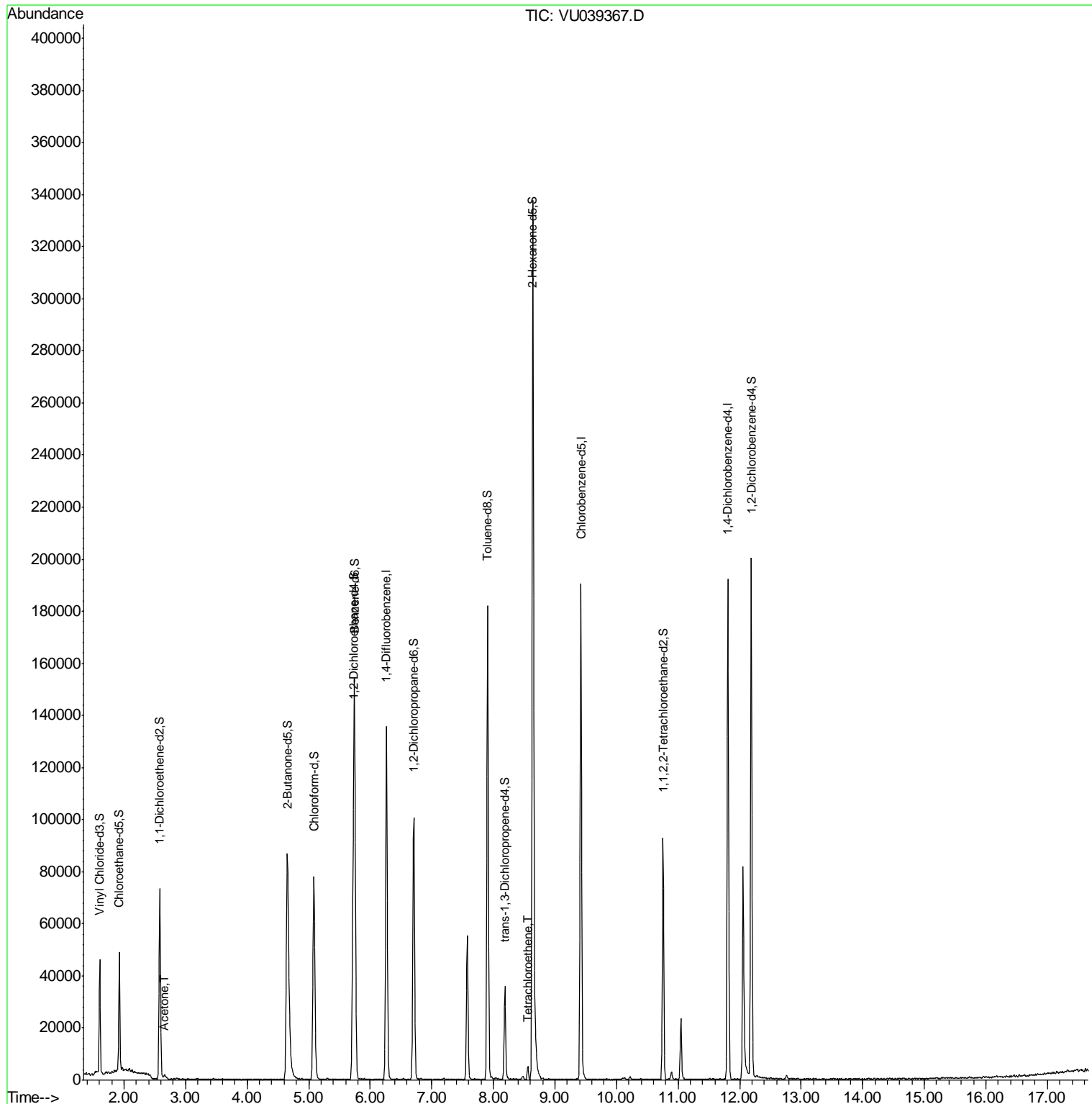
(#) = qualifier out of range (m) = manual integration (+) = signals summed

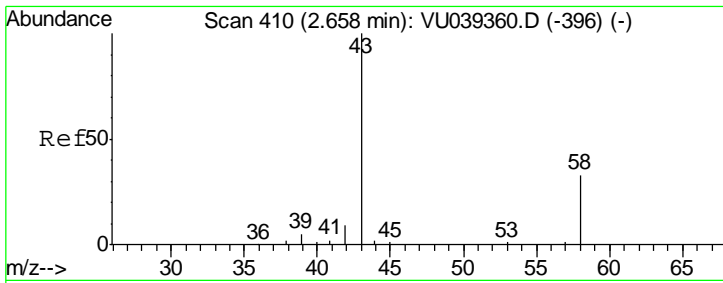
Data Path : Z:\VOASRV\HPCHEM1\MSVOA\_U\DATA\VU070820\  
 Data File : VU039367.D  
 Acq On : 09 Jul 2020 00:02  
 Operator : SY/MD  
 Sample : L3243-11  
 Misc : 25.0mL/MSVOA\_U/WATER  
 ALS Vial : 1 Sample Multiplier: 1

Instrument :  
 MSVOA\_U  
 ClientSampleId :  
 F4A75

Manual Integrations  
**APPROVED**  
 MMDadoda  
 7/10/2020 12:17:37 PM

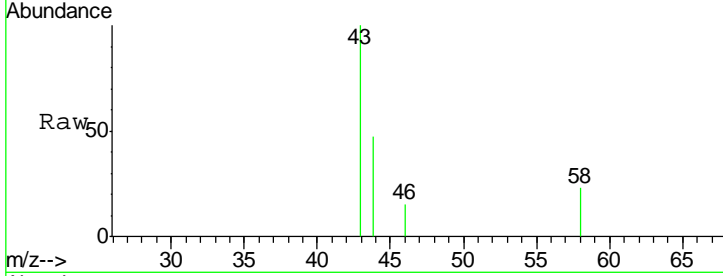
Quant Time: Jul 10 09:24:12 2020  
 Quant Method : Z:\VOASRV\HPCHEM1\MSVOA\_U\METHOD\SOMUTR070720WMA.M  
 Quant Title : TRACE VOA SOM01.0  
 QLast Update : Thu Jul 09 05:48:41 2020  
 Response via : Initial Calibration





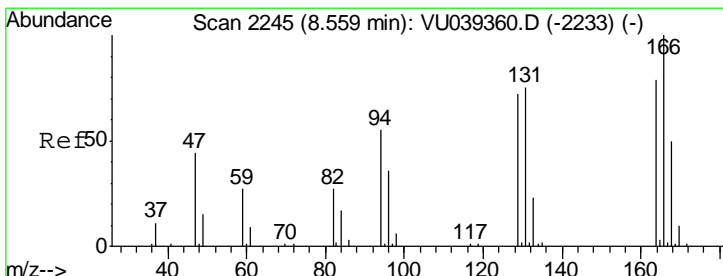
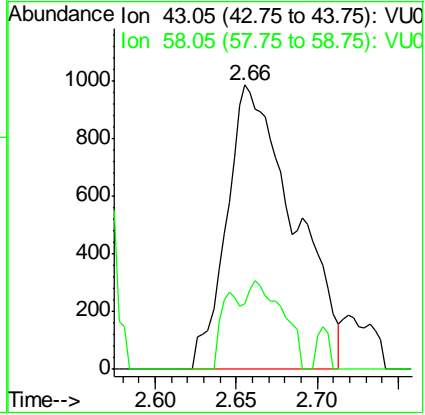
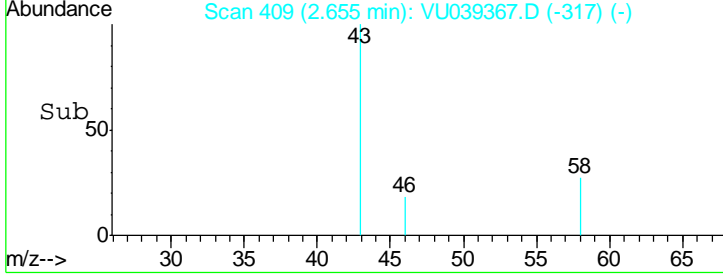
#13  
 Acetone  
 Concen: 1.908 ug/L m  
 RT: 2.66 min Scan# 409  
 Delta R.T. -0.00 min  
 Lab File: VU039367.D  
 Acq: 09 Jul 2020 00:02

Instrument : MSVOA\_U  
 ClientSampled : F4A75

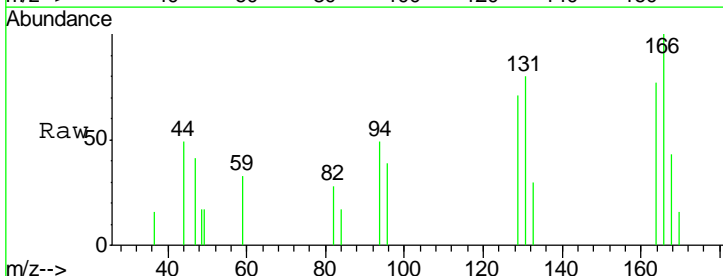


Tgt Ion: 43 Resp: 2846  
 Ion Ratio Lower Upper  
 43 100  
 58 16.8 0.0 62.8

Manual Integrations APPROVED  
 MMDadoda  
 7/10/2020 12:17:37 PM



#47  
 Tetrachloroethene  
 Concen: 0.171 ug/L  
 RT: 8.56 min Scan# 2246  
 Delta R.T. 0.00 min  
 Lab File: VU039367.D  
 Acq: 09 Jul 2020 00:02



Tgt Ion: 164 Resp: 905  
 Ion Ratio Lower Upper  
 164 100  
 129 91.7 68.6 127.4  
 131 103.7 66.4 123.4  
 166 129.7 85.9 159.5

