

Data Path : Z:\VOASRV\HPCHEM1\MSVOA U\DATA\VU070820\
 Data File : VU039342.D
 Acq On : 08 Jul 2020 13:02
 Operator : SY/MD
 Sample : VU0708WBL01
 Misc : 25.0mL/MSVOA U/WATER
 ALS Vial : 1 Sample Multiplier: 1

Instrument :
 MSVOA_U
 ClientSampleId :
 VBLK29

Integration Parameters: rteint.p
 Integrator: RTE
 Smoothing : ON Filtering: 5
 Sampling : 1 Min Area: 3 % of largest Peak
 Start Thrs: 0.1 Max Peaks: 100
 Stop Thrs : 0 Peak Location: TOP

If leading or trailing edge < 100 prefer < Baseline drop else tangent >
 Peak separation: 5

Method : Z:\VOASRV\HPCHEM1\MSVOA_U\METHOD\SOMUTR070720WMA.M
 Title : TRACE VOA SOM01.0

Signal : TIC

peak #	R.T. min	first scan	max scan	last scan	PK TY	peak height	corr. area	corr. % max.	% of total
1	1.607	75	83	92	rBV	40117	44263	8.49%	1.273%
2	1.925	173	182	192	rBV	38641	51550	9.89%	1.483%
3	2.581	374	386	397	rBV	68900	112486	21.59%	3.236%
4	3.060	525	535	545	rBV3	3577	6928	1.33%	0.199%
5	4.665	1014	1034	1081	rBV	60403	241692	46.38%	6.954%
6	5.083	1149	1164	1184	rBV	65610	150995	28.97%	4.344%
7	5.742	1348	1369	1387	rBV2	137396	360533	69.18%	10.373%
8	6.263	1515	1531	1550	rBV	146094	276854	53.13%	7.965%
9	6.703	1654	1668	1687	rVB	88028	173137	33.22%	4.981%
10	7.575	1926	1939	1956	rBV	50251	87825	16.85%	2.527%
11	7.906	2029	2042	2063	rBV	162275	282153	54.14%	8.118%
12	8.189	2119	2130	2145	rBV2	31365	52758	10.12%	1.518%
13	8.642	2258	2271	2303	rBV	267424	521128	100.00%	14.993%
14	8.928	2350	2360	2373	rBV4	4853	9020	1.73%	0.260%
15	9.420	2498	2513	2533	rBV	203882	351372	67.43%	10.109%
16	10.758	2917	2929	2944	rVB3	77236	123144	23.63%	3.543%
17	11.809	3242	3256	3272	rBV	213715	349701	67.10%	10.061%
18	12.188	3363	3374	3391	rVB	173052	280234	53.77%	8.062%

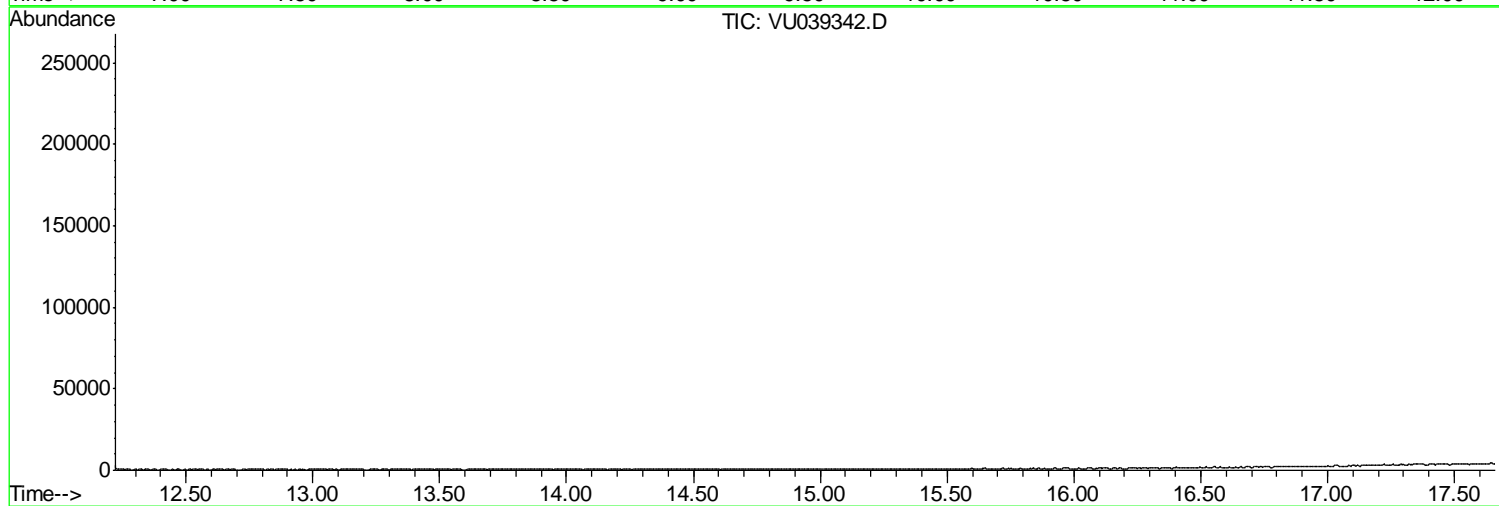
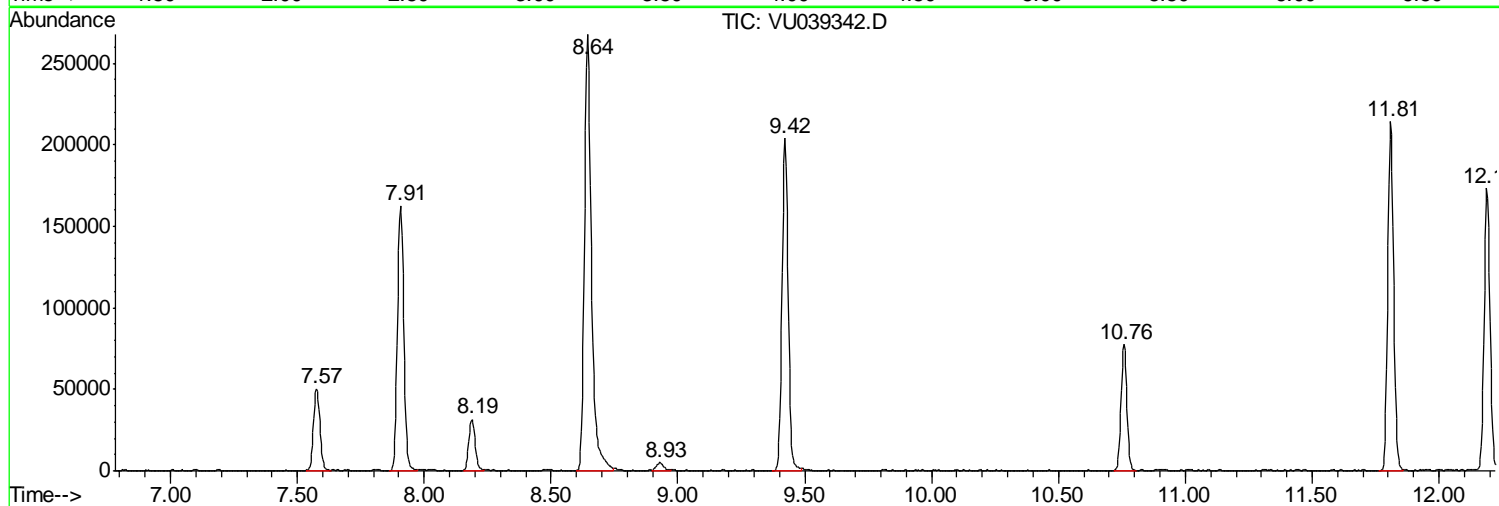
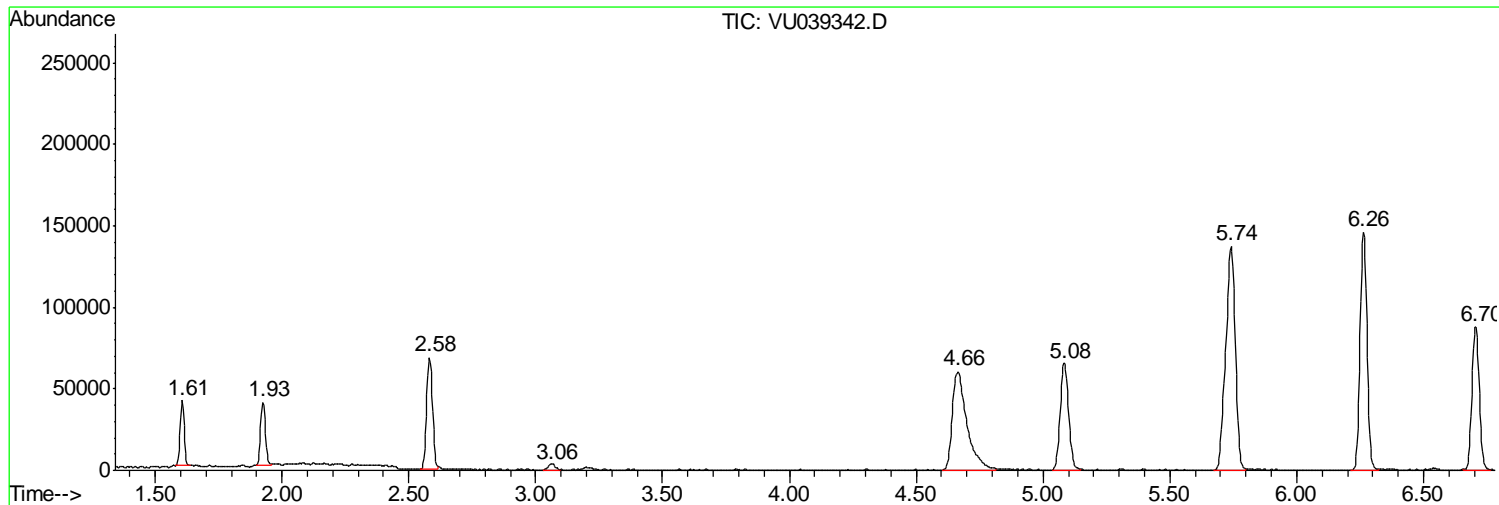
Sum of corrected areas: 3475773

Data Path : Z:\VOASRV\HPCHEM1\MSVOA U\DATA\VU070820\
Data File : VU039342.D
Acq On : 08 Jul 2020 13:02
Operator : SY/MD
Sample : VU0708WBL01
Misc : 25.0mL/MSVOA U/WATER
ALS Vial : 1 Sample Multiplier: 1

Instrument :
MSVOA_U
ClientSampled :
VBLK29

Quant Method : Z:\VOASRV\HPCHEM1\MSVOA_U\METHOD\SOMUTR070720WMA.M
Quant Title : TRACE VOA SOM01.0

TIC Library : C:\DATABASE\NIST11.L
TIC Integration Parameters: LSCINT.P



Data Path : Z:\VOASRV\HPCHEM1\MSVOA_U\DATA\VU070820\
Data File : VU039342.D
Acq On : 08 Jul 2020 13:02
Operator : SY/MD
Sample : VU0708WBL01
Misc : 25.0mL/MSVOA_U/WATER
ALS Vial : 1 Sample Multiplier: 1

Instrument :
MSVOA_U
ClientSampleId :
VBLK29

Quant Method : Z:\VOASRV\HPCHEM1\MSVOA_U\METHOD\SOMUTR070720WMA.M
Quant Title : TRACE VOA SOM01.0

TIC Library : C:\DATABASE\NIST11.L
TIC Integration Parameters: LSCINT.P

No Library Search Compounds Detected

Data Path : Z:\VOASRV\HPCHEM1\MSVOA_U\DATA\VU070820\
Data File : VU039342.D
Acq On : 08 Jul 2020 13:02
Operator : SY/MD
Sample : VU0708WBL01
Misc : 25.0mL/MSVOA_U/WATER
ALS Vial : 1 Sample Multiplier: 1

Instrument :
MSVOA_U
ClientSampleId :
VBLK29

Quant Method : Z:\VOASRV\HPCHEM1\MSVOA_U\METHOD\SOMUTR070720WMA.M
Quant Title : TRACE VOA SOM01.0

TIC Library : C:\DATABASE\NIST11.L
TIC Integration Parameters: LSCINT.P

TIC Top Hit name	RT	EstConc	Units	Response	--Internal Standard--			
					#	RT	Resp	Conc
