

Data Path : Z:\VOASRV\HPCHEM1\MSVOA U\DATA\VU071020\
 Data File : VU039436.D
 Acq On : 10 Jul 2020 17:38
 Operator : SY/MD
 Sample : L3244-13
 Misc : 25.0mL/MSVOA U/WATER
 ALS Vial : 15 Sample Multiplier: 1

Instrument :
 MSVOA_U
 ClientSampleId :
 F4B05

Quant Time: Jul 11 22:23:33 2020
 Quant Method : Z:\VOASRV\HPCHEM1\MSVOA_U\METHOD\SOMUTR070720WMA.M
 Quant Title : TRACE VOA SOM01.0
 QLast Update : Sat Jul 11 02:49:36 2020
 Response via : Initial Calibration

Internal Standards	R.T.	QIon	Response	Conc	Units	Dev(Min)
1) 1,4-Difluorobenzene	6.27	114	95056	5.00	ug/L	0.00
28) Chlorobenzene-d5	9.42	117	87971	5.00	ug/L	0.00
60) 1,4-Dichlorobenzene-d4	11.81	152	42156	5.00	ug/L	0.00

System Monitoring Compounds

4) Vinyl Chloride-d3	1.61	65	22306	4.05	ug/L	0.00
Spiked Amount	5.000	Range	40 - 130	Recovery	=	81.00%
7) Chloroethane-d5	1.92	69	30272	5.37	ug/L	0.00
Spiked Amount	5.000	Range	65 - 130	Recovery	=	107.40%
11) 1,1-Dichloroethene-d2	2.58	63	35806	3.30	ug/L	0.00
Spiked Amount	5.000	Range	60 - 125	Recovery	=	66.00%
20) 2-Butanone-d5	4.65	46	147282	58.43	ug/L	0.00
Spiked Amount	50.000	Range	40 - 130	Recovery	=	116.86%
24) Chloroform-d	5.08	84	58314	4.97	ug/L	0.00
Spiked Amount	5.000	Range	70 - 125	Recovery	=	99.40%
26) 1,2-Dichloroethane-d4	5.72	65	39693	5.39	ug/L	0.00
Spiked Amount	5.000	Range	70 - 130	Recovery	=	107.80%
32) Benzene-d6	5.75	84	111692	5.27	ug/L	0.00
Spiked Amount	5.000	Range	70 - 125	Recovery	=	105.40%
36) 1,2-Dichloropropane-d6	6.71	67	39663	5.33	ug/L	0.00
Spiked Amount	5.000	Range	60 - 140	Recovery	=	106.60%
41) Toluene-d8	7.91	98	93971	5.12	ug/L	0.00
Spiked Amount	5.000	Range	70 - 130	Recovery	=	102.40%
43) trans-1,3-Dichloropropene-	8.19	79	15370	4.68	ug/L	0.00
Spiked Amount	5.000	Range	55 - 130	Recovery	=	93.60%
46) 2-Hexanone-d5	8.64	63	104199	53.46	ug/L	0.00
Spiked Amount	50.000	Range	45 - 130	Recovery	=	106.92%
57) 1,1,2,2-Tetrachloroethane-	10.76	84	38236	5.18	ug/L	0.00
Spiked Amount	5.000	Range	65 - 120	Recovery	=	103.60%
64) 1,2-Dichlorobenzene-d4	12.19	152	38731	5.15	ug/L	0.00
Spiked Amount	5.000	Range	80 - 120	Recovery	=	103.00%

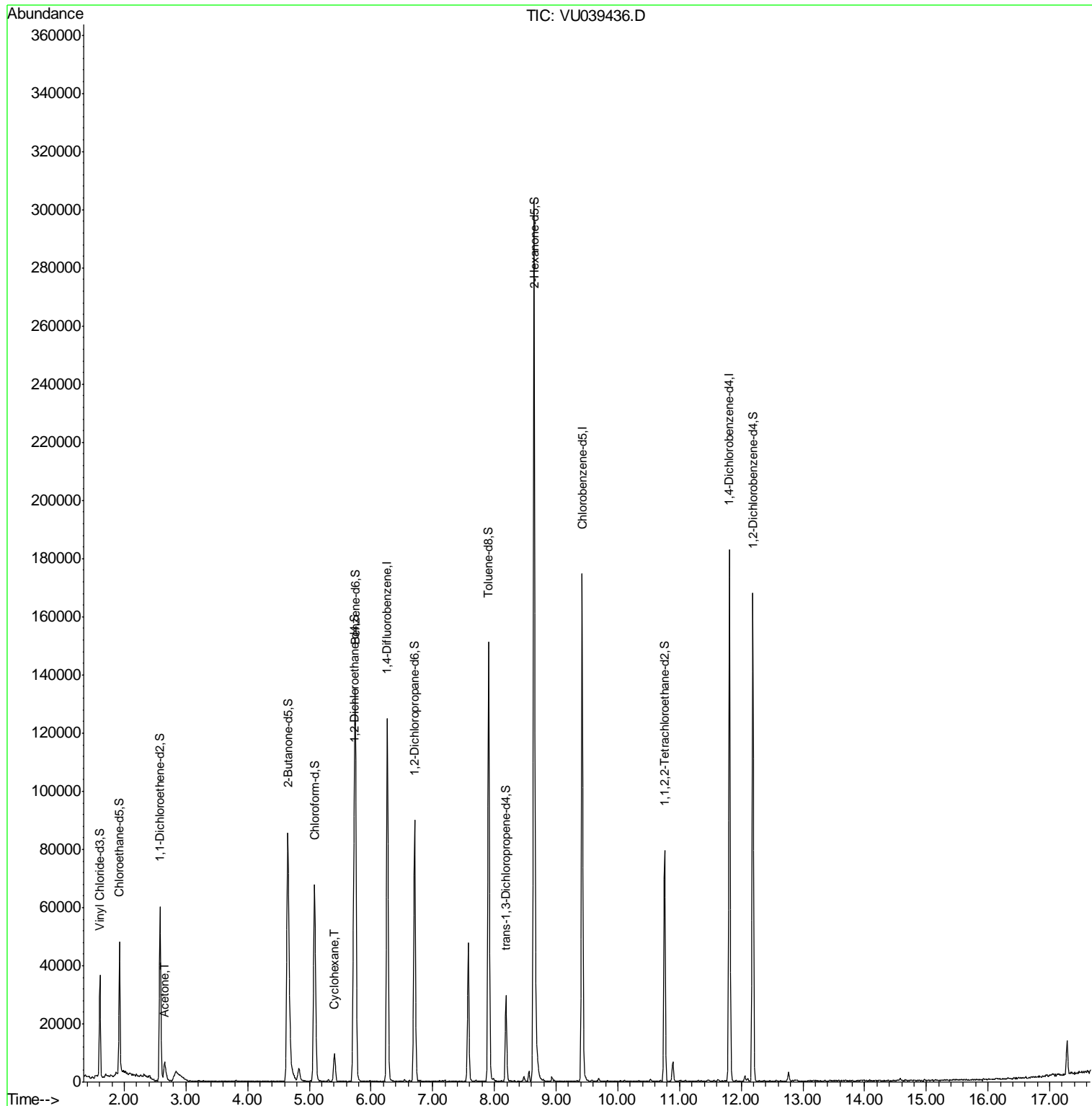
Target Compounds					Ovalue
13) Acetone	2.65	43	10648	7.826 ug/L	95
30) Cyclohexane	5.41	56	4863	0.446 ug/L	98

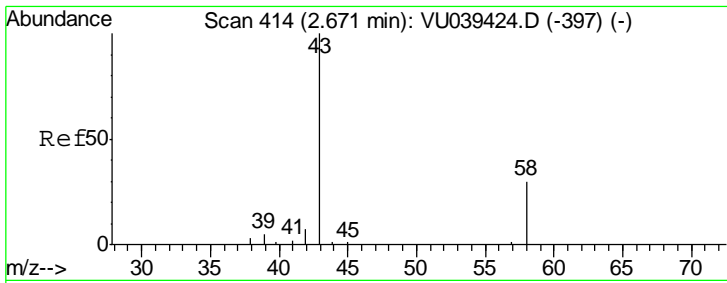
(#) = qualifier out of range (m) = manual integration (+) = signals summed

Data Path : Z:\VOASRV\HPCHEM1\MSVOA U\DATA\VU071020\
 Data File : VU039436.D
 Acq On : 10 Jul 2020 17:38
 Operator : SY/MD
 Sample : L3244-13
 Misc : 25.0mL/MSVOA U/WATER
 ALS Vial : 15 Sample Multiplier: 1

Instrument :
 MSVOA_U
 ClientSampled :
 F4B05

Quant Time: Jul 11 22:23:33 2020
 Quant Method : Z:\VOASRV\HPCHEM1\MSVOA_U\METHOD\SOMUTR070720WMA.M
 Quant Title : TRACE VOA SOM01.0
 QLast Update : Sat Jul 11 02:49:36 2020
 Response via : Initial Calibration

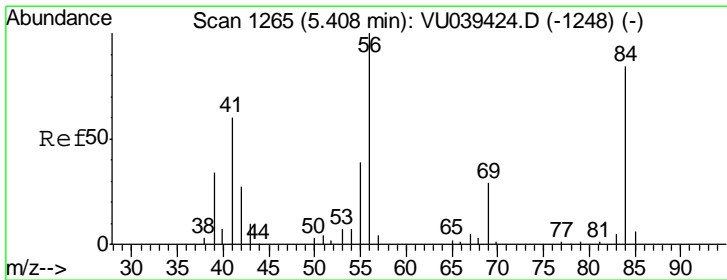
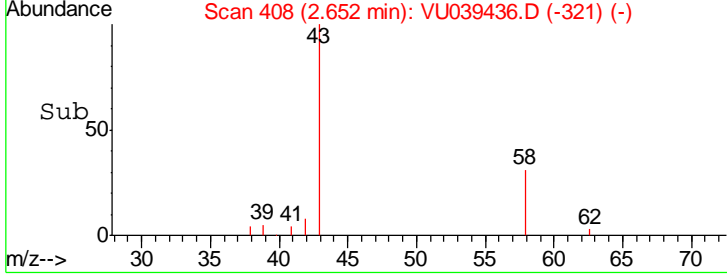
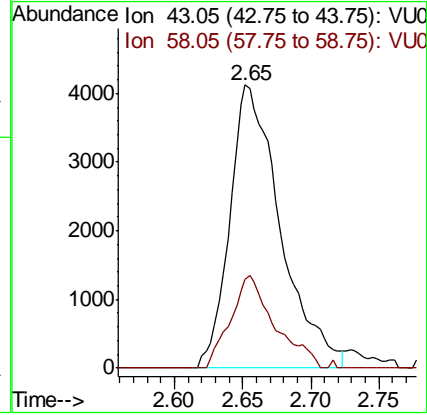
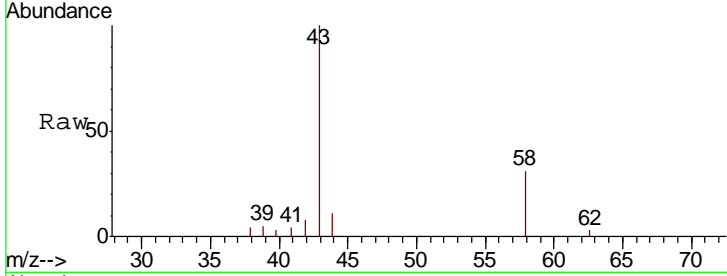




#13
 Acetone
 Concen: 7.826 ug/L
 RT: 2.65 min Scan# 408
 Delta R.T. -0.02 min
 Lab File: VU039436.D
 Acq: 10 Jul 2020 17:38

Instrument :
 MSVOA_U
ClientSampled :
 F4B05

Tgt Ion	Resp	Lower	Upper
43	10648		
58	28.4	0.0	62.8



#30
 Cyclohexane
 Concen: 0.446 ug/L
 RT: 5.41 min Scan# 1266
 Delta R.T. 0.00 min
 Lab File: VU039436.D
 Acq: 10 Jul 2020 17:38

Tgt Ion	Resp	Lower	Upper
56	4863		
69	29.1	24.1	36.1
84	85.5	67.0	100.6

