

Data Path : Z:\VOASRV\HPCHEM1\MSVOA U\DATA\VU071020\  
 Data File : VU039464.D  
 Acq On : 11 Jul 2020 05:28  
 Operator : SY/MD  
 Sample : L3268-20  
 Misc : 25.0mL/MSVOA U/WATER  
 ALS Vial : 45 Sample Multiplier: 1

Instrument :  
 MSVOA\_U  
 ClientSampled :  
 F4B02

Integration Parameters: rteint.p  
 Integrator: RTE  
 Smoothing : ON Filtering: 5  
 Sampling : 1 Min Area: 3 % of largest Peak  
 Start Thrs: 0.1 Max Peaks: 100  
 Stop Thrs : 0 Peak Location: TOP

If leading or trailing edge < 100 prefer < Baseline drop else tangent >  
 Peak separation: 5

Method : Z:\VOASRV\HPCHEM1\MSVOA\_U\METHOD\SOMUTR070720WMA.M  
 Title : TRACE VOA SOM01.0

Signal : TIC

peak #	R.T. min	first scan	max scan	last scan	PK TY	peak height	corr. area	corr. % max.	% of total
1	1.607	72	83	95	rVB	28250	33485	6.27%	1.091%
2	1.925	171	182	195	rBV	38454	52248	9.78%	1.703%
3	2.581	375	386	400	rBV	49626	81082	15.17%	2.643%
4	2.655	400	409	433	rVB2	6284	16190	3.03%	0.528%
5	2.848	444	469	471	rBV4	3712	11136	2.08%	0.363%
6	4.655	1014	1031	1069	rBV	76752	225301	42.15%	7.343%
7	5.086	1146	1165	1186	rBV3	60688	139761	26.15%	4.555%
8	5.411	1252	1266	1276	rBV5	3121	7293	1.36%	0.238%
9	5.745	1349	1370	1386	rBV2	118582	319475	59.78%	10.412%
10	6.266	1518	1532	1549	rBV	112163	214775	40.19%	7.000%
11	6.706	1656	1669	1685	rBV2	81005	157221	29.42%	5.124%
12	7.578	1928	1940	1956	rBV2	40527	70509	13.19%	2.298%
13	7.906	2027	2042	2059	rBV	133287	232151	43.44%	7.566%
14	8.189	2118	2130	2146	rBV	26793	45603	8.53%	1.486%
15	8.642	2254	2271	2305	rBV	285406	534459	100.00%	17.419%
16	9.420	2500	2513	2535	rBV	161590	269727	50.47%	8.791%
17	10.758	2914	2929	2943	rBV	77259	122291	22.88%	3.986%
18	10.889	2961	2970	2981	rBV3	4371	6529	1.22%	0.213%
19	11.809	3244	3256	3269	rBV	164353	264956	49.57%	8.635%
20	12.188	3363	3374	3388	rVB2	152998	250605	46.89%	8.168%
21	17.281	4949	4958	4967	rBV3	9829	13467	2.52%	0.439%

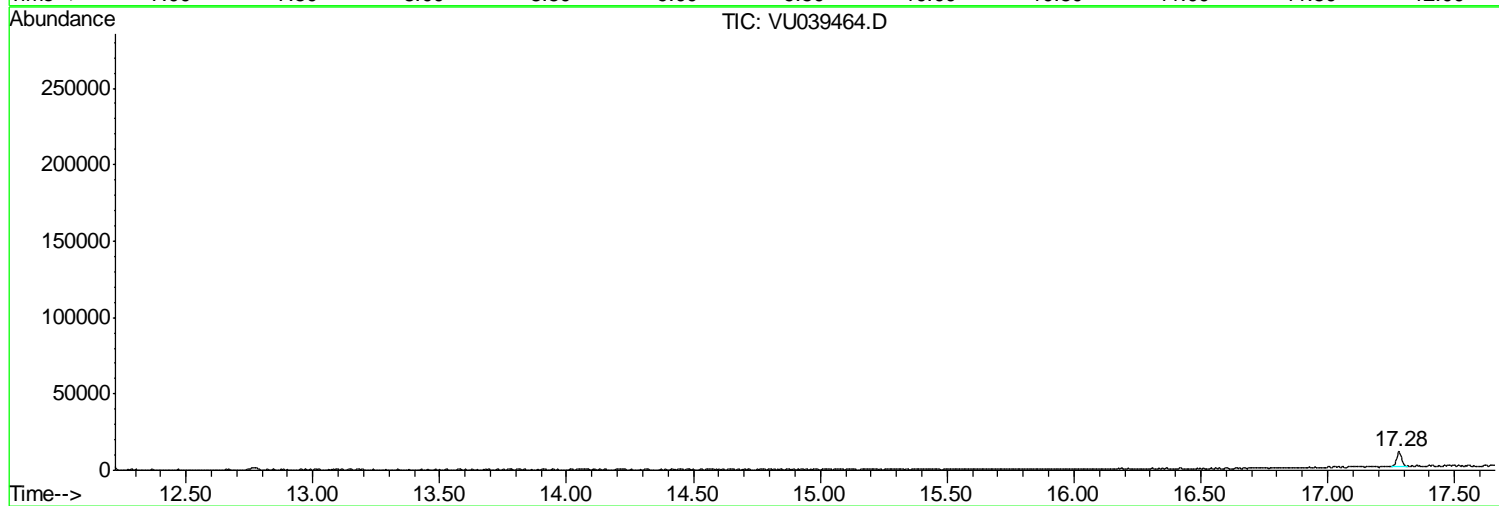
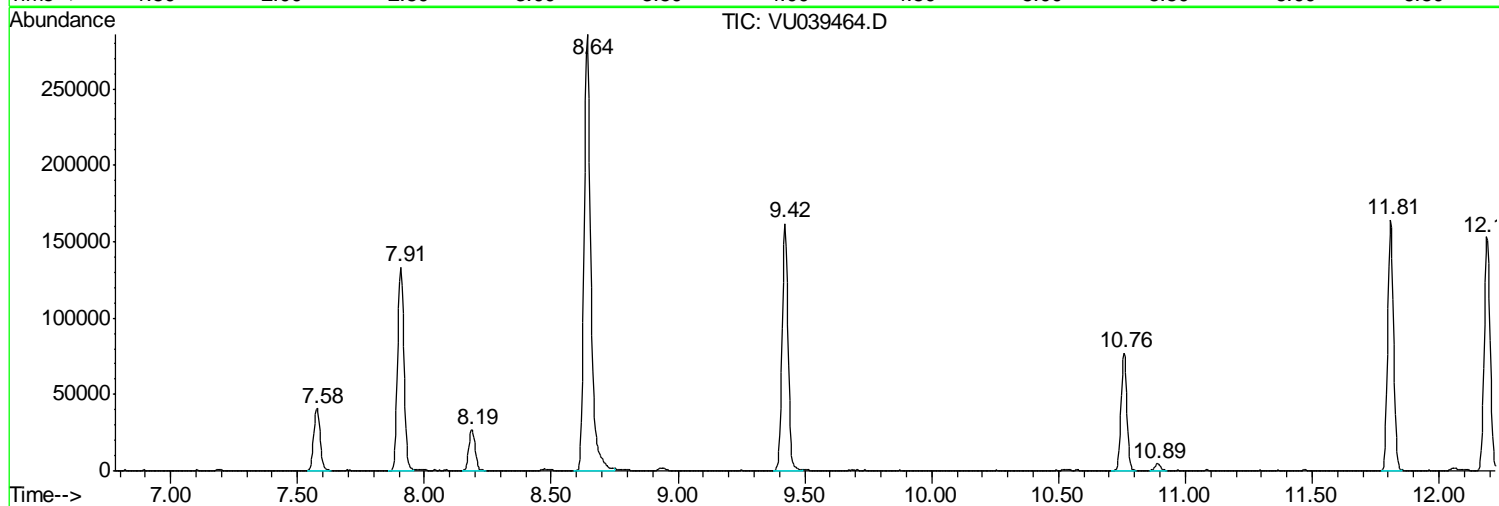
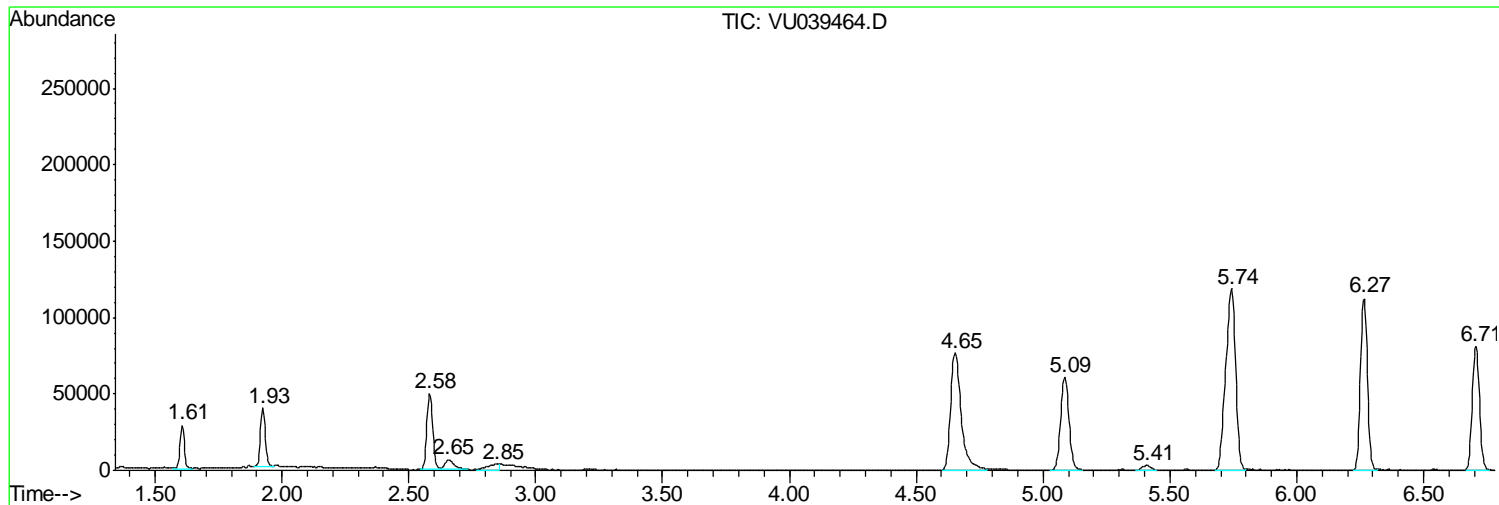
Sum of corrected areas: 3068264

Data Path : Z:\VOASRV\HPCHEM1\MSVOA U\DATA\VU071020\  
Data File : VU039464.D  
Acq On : 11 Jul 2020 05:28  
Operator : SY/MD  
Sample : L3268-20  
Misc : 25.0mL/MSVOA U/WATER  
ALS Vial : 45 Sample Multiplier: 1

Instrument :  
MSVOA\_U  
ClientSampled :  
F4B02

Quant Method : Z:\VOASRV\HPCHEM1\MSVOA\_U\METHOD\SOMUTR070720WMA.M  
Quant Title : TRACE VOA SOM01.0

TIC Library : C:\DATABASE\NIST11.L  
TIC Integration Parameters: LSCINT.P



Data Path : Z:\VOASRV\HPCHEM1\MSVOA\_U\DATA\VU071020\  
Data File : VU039464.D  
Acq On : 11 Jul 2020 05:28  
Operator : SY/MD  
Sample : L3268-20  
Misc : 25.0mL/MSVOA\_U/WATER  
ALS Vial : 45 Sample Multiplier: 1

Instrument :  
MSVOA\_U  
ClientSampleId :  
F4B02

Quant Method : Z:\VOASRV\HPCHEM1\MSVOA\_U\METHOD\SOMUTR070720WMA.M  
Quant Title : TRACE VOA SOM01.0

TIC Library : C:\DATABASE\NIST11.L  
TIC Integration Parameters: LSCINT.P

No Library Search Compounds Detected

\*\*\*\*\*

Data Path : Z:\VOASRV\HPCHEM1\MSVOA\_U\DATA\VU071020\  
Data File : VU039464.D  
Acq On : 11 Jul 2020 05:28  
Operator : SY/MD  
Sample : L3268-20  
Misc : 25.0mL/MSVOA\_U/WATER  
ALS Vial : 45 Sample Multiplier: 1

Instrument :  
MSVOA\_U  
ClientSampleId :  
F4B02

Quant Method : Z:\VOASRV\HPCHEM1\MSVOA\_U\METHOD\SOMUTR070720WMA.M  
Quant Title : TRACE VOA SOM01.0

TIC Library : C:\DATABASE\NIST11.L  
TIC Integration Parameters: LSCINT.P

TIC Top Hit name	RT	EstConc	Units	Response	--Internal Standard--			
					#	RT	Resp	Conc

---