

Data Path : Z:\voasrv\HPCHEM1\MSVOA\_U\Data\VU071122\  
 Data File : VU049672.D  
 Acq On : 11 Jul 2022 13:30  
 Operator : SY/MD  
 Sample : VU0711MBL01  
 Misc : 5.00g/5.0mL/100uL/5.0mL/MSVOA\_U/MEOH  
 ALS Vial : 10 Sample Multiplier: 1

Instrument :  
 MSVOA\_U  
 ClientSampleId :  
 VBLK148

Quant Time: Jul 12 02:33:33 2022  
 Quant Method : Z:\voasrv\HPCHEM1\MSVOA\_U\Method\SFAMULM071122WMA.M  
 Quant Title : VOC Analysis  
 QLast Update : Tue Jul 12 02:23:25 2022  
 Response via : Initial Calibration

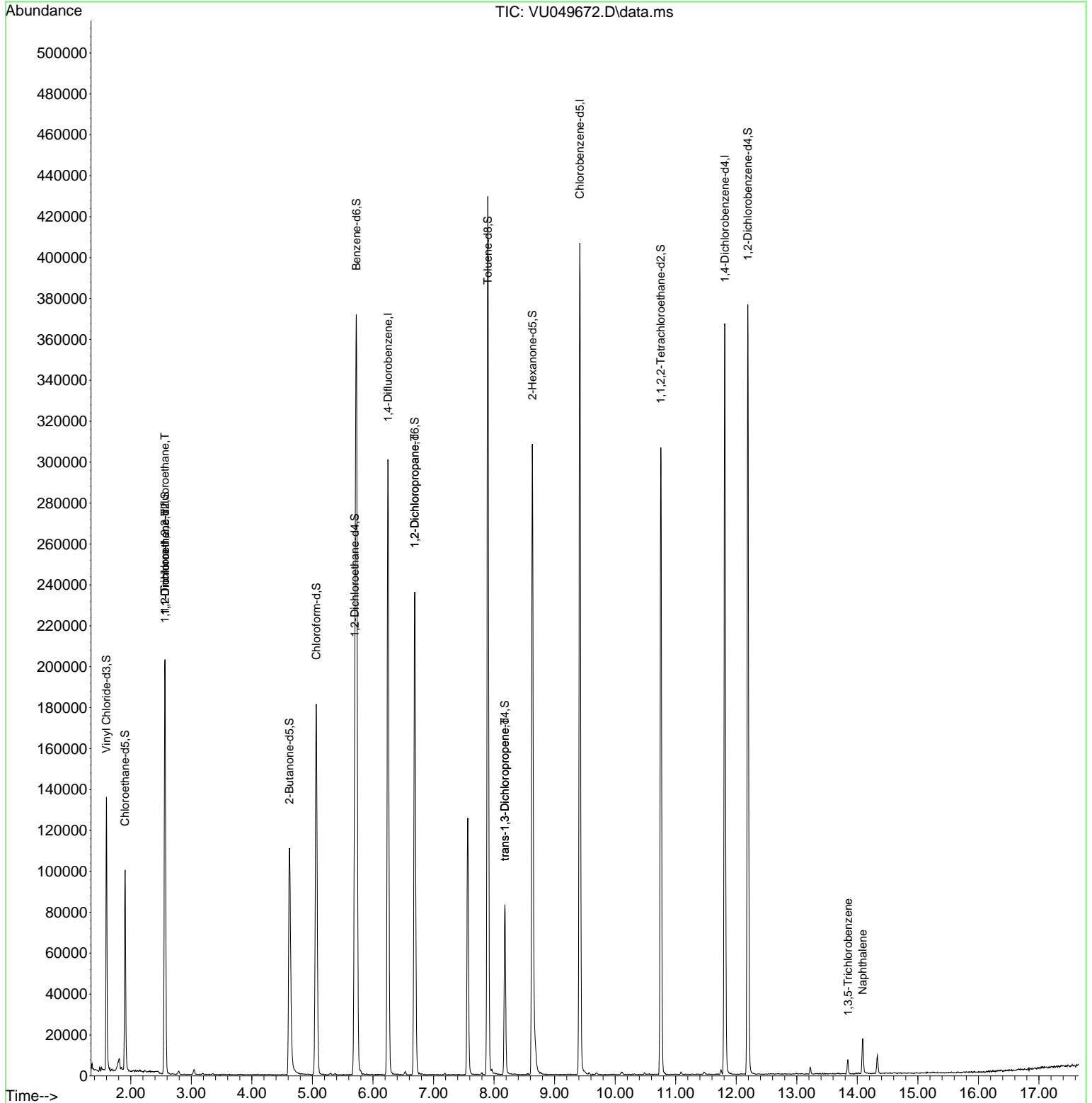
Compound	R.T.	QIon	Response	Conc	Units	Dev(Min)
Internal Standards						
1) 1,4-Difluorobenzene	6.250	114	230582	50.000	ug/L	0.00
28) Chlorobenzene-d5	9.417	117	210679	50.000	ug/L	0.00
58) 1,4-Dichlorobenzene-d4	11.812	152	91395	50.000	ug/L	0.00
System Monitoring Compounds						
4) Vinyl Chloride-d3	1.597	65	94661	48.656	ug/L	0.00
Spiked Amount	50.000	Range 60 - 135	Recovery =	97.320%		
7) Chloroethane-d5	1.906	69	69896	49.702	ug/L	0.00
Spiked Amount	50.000	Range 70 - 130	Recovery =	99.400%		
11) 1,1-Dichloroethene-d2	2.565	63	124999	36.374	ug/L	0.00
Spiked Amount	50.000	Range 60 - 125	Recovery =	72.740%		
21) 2-Butanone-d5	4.620	46	170118	102.429	ug/L	0.00
Spiked Amount	100.000	Range 40 - 130	Recovery =	102.430%		
24) Chloroform-d	5.063	84	164236	47.662	ug/L	0.00
Spiked Amount	50.000	Range 70 - 125	Recovery =	95.320%		
26) 1,2-Dichloroethane-d4	5.700	65	112888	48.405	ug/L	0.00
Spiked Amount	50.000	Range 70 - 125	Recovery =	96.820%		
32) Benzene-d6	5.726	84	323874	50.602	ug/L	0.00
Spiked Amount	50.000	Range 70 - 125	Recovery =	101.200%		
36) 1,2-Dichloropropane-d6	6.690	67	111388	51.741	ug/L	0.00
Spiked Amount	50.000	Range 70 - 120	Recovery =	103.480%		
41) Toluene-d8	7.896	98	276216	49.557	ug/L	0.00
Spiked Amount	50.000	Range 80 - 120	Recovery =	99.120%		
43) trans-1,3-Dichloroprop...	8.179	79	45158	49.787	ug/L	0.00
Spiked Amount	50.000	Range 60 - 125	Recovery =	99.580%		
47) 2-Hexanone-d5	8.632	63	98021	101.221	ug/L	0.00
Spiked Amount	100.000	Range 45 - 130	Recovery =	101.220%		
56) 1,1,2,2-Tetrachloroeth...	10.755	84	148546	49.314	ug/L	0.00
Spiked Amount	50.000	Range 65 - 120	Recovery =	98.620%		
66) 1,2-Dichlorobenzene-d4	12.192	152	89401	51.881	ug/L	0.00
Spiked Amount	50.000	Range 80 - 120	Recovery =	103.760%		
Target Compounds						
10) 1,1,2-Trichloro-1,2,2-...	2.562	101	1126	0.634	ug/L #	26
12) 1,1-Dichloroethene	2.565	96	977	0.593	ug/L #	1
37) 1,2-Dichloropropane	6.690	63	12080	5.503	ug/L #	89
44) trans-1,3-Dichloropropene	8.179	75	2298	0.827	ug/L	89
69) 1,3,5-Trichlorobenzene	13.844	180	2620	1.255	ug/L	90
71) Naphthalene	14.089	128	15640	2.284	ug/L	96

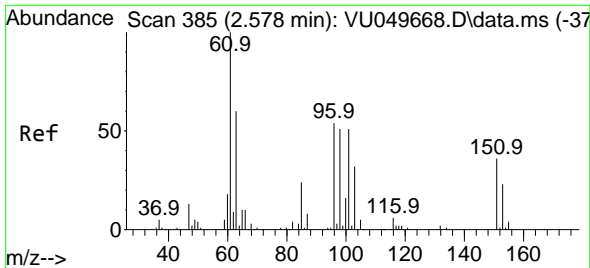
(#) = qualifier out of range (m) = manual integration (+) = signals summed

Data Path : Z:\voasrv\HPCHEM1\MSVOA\_U\Data\VU071122\  
 Data File : VU049672.D  
 Acq On : 11 Jul 2022 13:30  
 Operator : SY/MD  
 Sample : VU0711MBL01  
 Misc : 5.00g/5.0mL/100uL/5.0mL/MSVOA\_U/MEOH  
 ALS Vial : 10 Sample Multiplier: 1

Instrument :  
 MSVOA\_U  
 ClientSampleId :  
 VBLK148

Quant Time: Jul 12 02:33:33 2022  
 Quant Method : Z:\voasrv\HPCHEM1\MSVOA\_U\Method\SFAMULM071122WMA.M  
 Quant Title : VOC Analysis  
 QLast Update : Tue Jul 12 02:23:25 2022  
 Response via : Initial Calibration

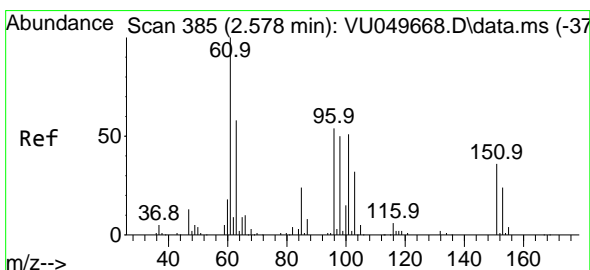
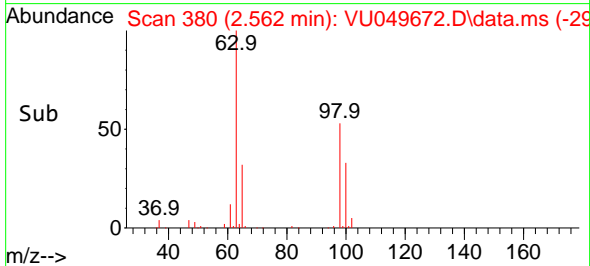
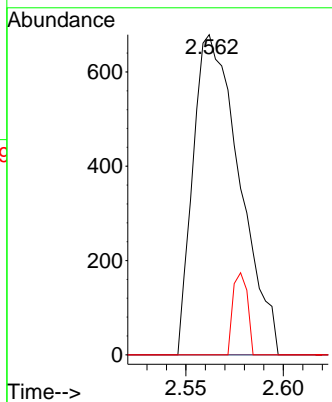
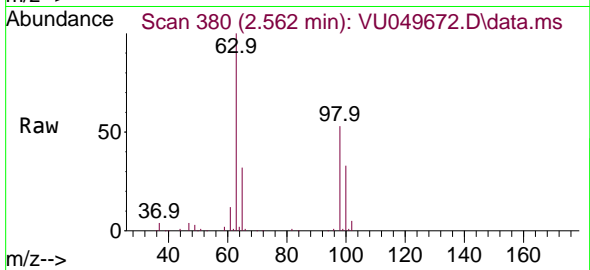




#10  
 1,1,2-Trichloro-1,2,2-trifluoroethane  
 Concen: 0.634 ug/L  
 RT: 2.562 min Scan# 380  
 Delta R.T. -0.016 min  
 Lab File: VU049672.D  
 Acq: 11 Jul 2022 13:30

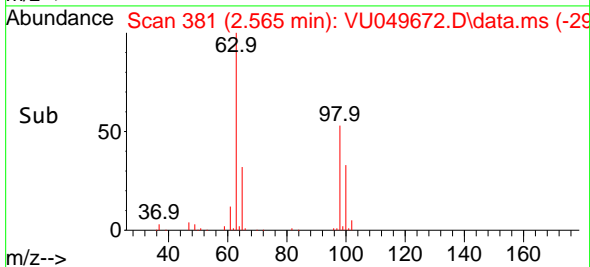
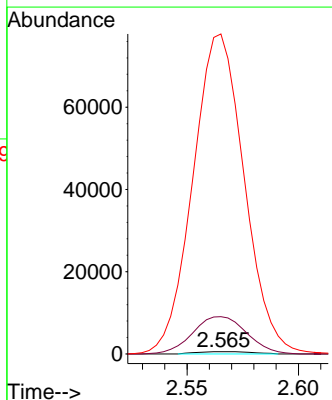
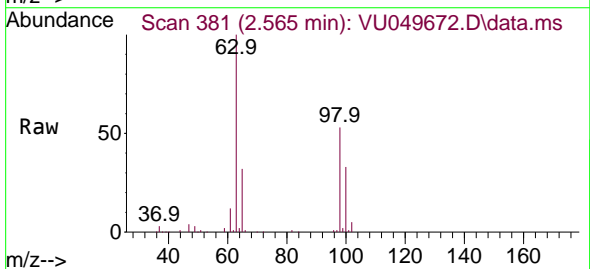
Instrument : MSVOA\_U  
 ClientSampleId : VBLK148

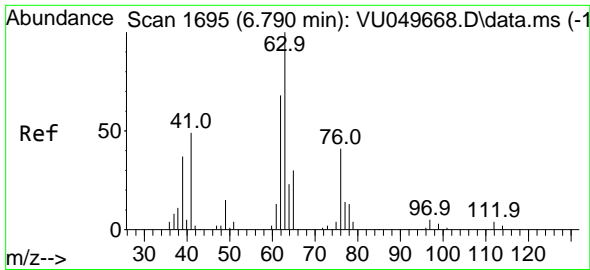
Tgt Ion	Resp	Lower	Upper
101	1126		
85	0.0	37.3	55.9#
151	7.9	56.9	85.3#



#12  
 1,1-Dichloroethene  
 Concen: 0.593 ug/L  
 RT: 2.565 min Scan# 381  
 Delta R.T. -0.013 min  
 Lab File: VU049672.D  
 Acq: 11 Jul 2022 13:30

Tgt Ion	Resp	Lower	Upper
96	977		
61	1608.1	129.6	240.6#
63	13772.7	79.0	146.6#

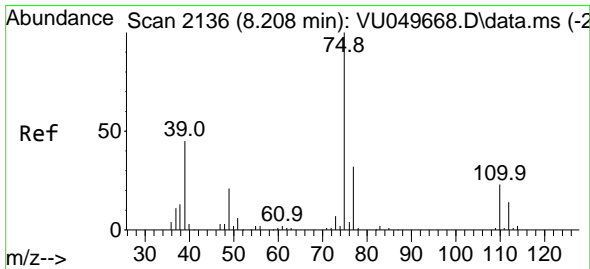
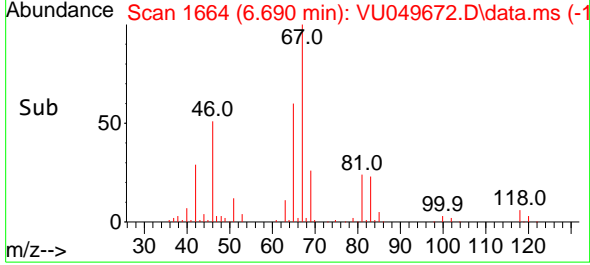
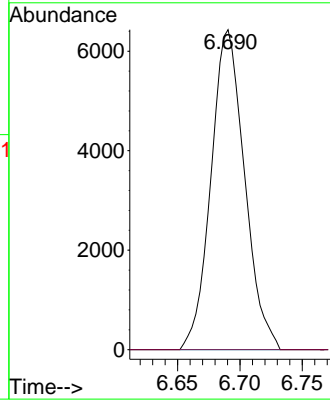
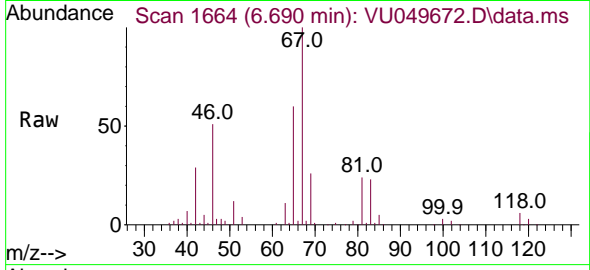




#37  
 1,2-Dichloropropane  
 Concen: 5.503 ug/L  
 RT: 6.690 min Scan# 1  
 Delta R.T. -0.100 min  
 Lab File: VU049672.D  
 Acq: 11 Jul 2022 13:30

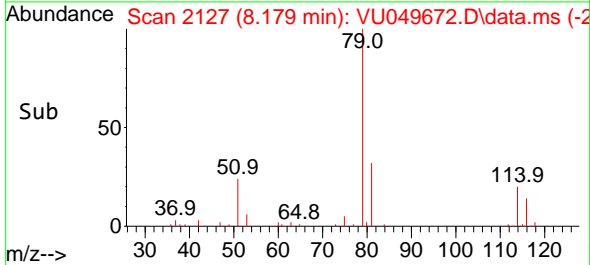
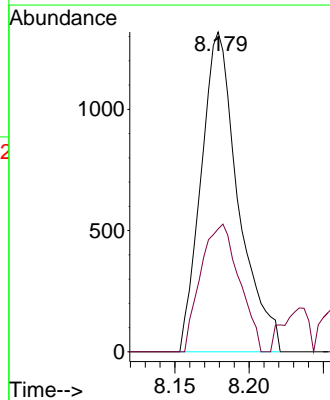
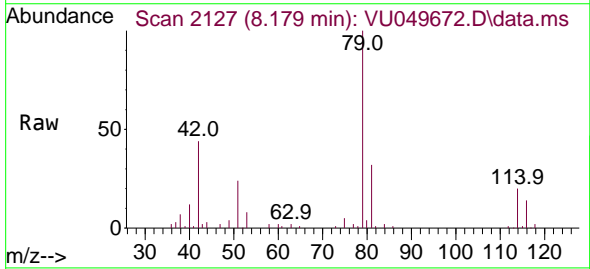
Instrument :  
 MSVOA\_U  
 ClientSampleId :  
 VBLK148

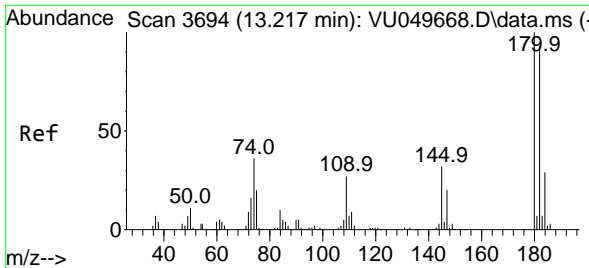
Tgt Ion: 63 Resp: 12080  
 Ion Ratio Lower Upper  
 63 100  
 112 0.0 2.8 4.2#



#44  
 trans-1,3-Dichloropropene  
 Concen: 0.827 ug/L  
 RT: 8.179 min Scan# 2127  
 Delta R.T. -0.029 min  
 Lab File: VU049672.D  
 Acq: 11 Jul 2022 13:30

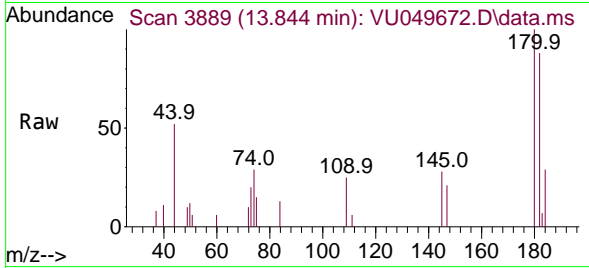
Tgt Ion: 75 Resp: 2298  
 Ion Ratio Lower Upper  
 75 100  
 77 38.4 22.5 41.9





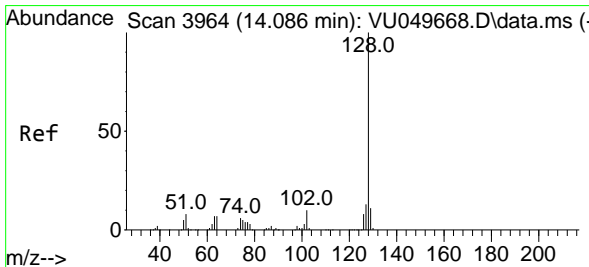
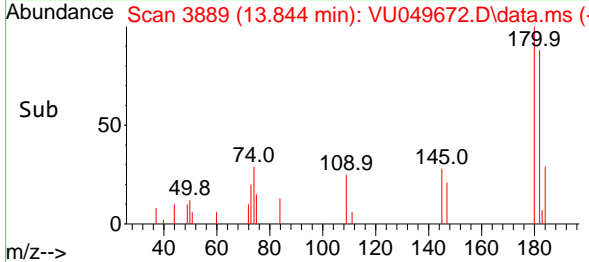
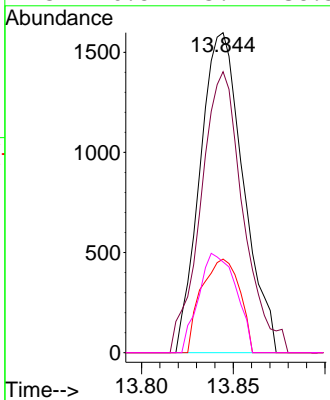
#69  
 1,3,5-Trichlorobenzene  
 Concen: 1.255 ug/L  
 RT: 13.844 min Scan# 3889  
 Delta R.T. 0.627 min  
 Lab File: VU049672.D  
 Acq: 11 Jul 2022 13:30

Instrument : MSVOA\_U  
 ClientSampleId : VBLK148



Tgt Ion:180 Resp: 2620

Ion	Ratio	Lower	Upper
180	100		
182	85.0	76.0	114.0
184	25.8	24.0	36.0
145	26.8	25.7	38.5



#71  
 Naphthalene  
 Concen: 2.284 ug/L  
 RT: 14.089 min Scan# 3965  
 Delta R.T. 0.003 min  
 Lab File: VU049672.D  
 Acq: 11 Jul 2022 13:30

Tgt Ion:128 Resp: 15640

Ion	Ratio	Lower	Upper
128	100		
127	10.7	10.2	15.4
129	10.1	8.8	13.2

