

Data File : VU025386.D  
 Acq On : 13 Jul 2018 12:02  
 Operator : MD/SY  
 Sample : J3937-01  
 Misc : 5.0mL/MSVOA\_U/WATER  
 ALS Vial : 5 Sample Multiplier: 1

Instrument :  
 MSVOA\_U  
 ClientSampleId :  
 BEMG1

Quant Time: Jul 13 14:57:20 2018  
 Quant Method : Z:\VOASRV\HPCHEM1\MSVOA\_U\METHOD\SOMULM062918WMA.M  
 Quant Title : VOC Analysis  
 QLast Update : Fri Jul 13 14:43:42 2018  
 Response via : Initial Calibration

Internal Standards	R.T.	QIon	Response	Conc	Units	Dev(Min)
1) 1,4-Difluorobenzene	5.89	114	293530	50.00	ug/L	0.00
28) Chlorobenzene-d5	9.09	117	256905	50.00	ug/L	0.00
60) 1,4-Dichlorobenzene-d4	11.49	152	113796	50.00	ug/L	0.00

System Monitoring Compounds

4) Vinyl Chloride-d3	1.40	65	81327	46.35	ug/L	0.00
Spiked Amount	50.000	Range	60 - 135	Recovery	=	92.70%
7) Chloroethane-d5	1.68	69	68774	47.52	ug/L	0.00
Spiked Amount	50.000	Range	70 - 130	Recovery	=	95.04%
11) 1,1-Dichloroethene-d2	2.27	63	137482	35.92	ug/L	0.00
Spiked Amount	50.000	Range	60 - 125	Recovery	=	71.84%
21) 2-Butanone-d5	4.18	46	142292	97.02	ug/L	0.00
Spiked Amount	100.000	Range	40 - 130	Recovery	=	97.02%
24) Chloroform-d	4.65	84	175554	46.71	ug/L	0.00
Spiked Amount	50.000	Range	70 - 125	Recovery	=	93.42%
26) 1,2-Dichloroethane-d4	5.31	65	126696	47.54	ug/L	0.00
Spiked Amount	50.000	Range	70 - 125	Recovery	=	95.08%
32) Benzene-d6	5.35	84	352163	49.96	ug/L	0.00
Spiked Amount	50.000	Range	70 - 125	Recovery	=	99.92%
36) 1,2-Dichloropropane-d6	6.33	67	112023	49.90	ug/L	0.00
Spiked Amount	50.000	Range	70 - 120	Recovery	=	99.80%
41) Toluene-d8	7.57	98	330193	47.88	ug/L	0.00
Spiked Amount	50.000	Range	80 - 120	Recovery	=	95.76%
43) trans-1,3-Dichloropropene-	7.85	79	49958	44.38	ug/L	0.00
Spiked Amount	50.000	Range	60 - 125	Recovery	=	88.76%
47) 2-Hexanone-d5	8.31	63	102487	100.02	ug/L	0.00
Spiked Amount	100.000	Range	45 - 130	Recovery	=	100.02%
57) 1,1,2,2-Tetrachloroethane-	10.44	84	148625	46.72	ug/L	0.00
Spiked Amount	50.000	Range	65 - 120	Recovery	=	93.44%
64) 1,2-Dichlorobenzene-d4	11.86	152	126543	51.03	ug/L	0.00
Spiked Amount	50.000	Range	80 - 120	Recovery	=	102.06%

Target Compounds

Target Compounds	R.T.	QIon	Response	Conc	Units	Qvalue
13) Acetone	2.32	43	4155	2.756	ug/L	94
20) cis-1,2-Dichloroethene	4.23	96	15975	7.096	ug/L	92

(#) = qualifier out of range (m) = manual integration (+) = signals summed

Data File : VU025386.D

Acq On : 13 Jul 2018 12:02

Operator : MD/SY

Sample : J3937-01

Misc : 5.0mL/MSVOA\_U/WATER

ALS Vial : 5 Sample Multiplier: 1

Instrument :  
MSVOA\_U  
ClientSampled :  
BEMG1

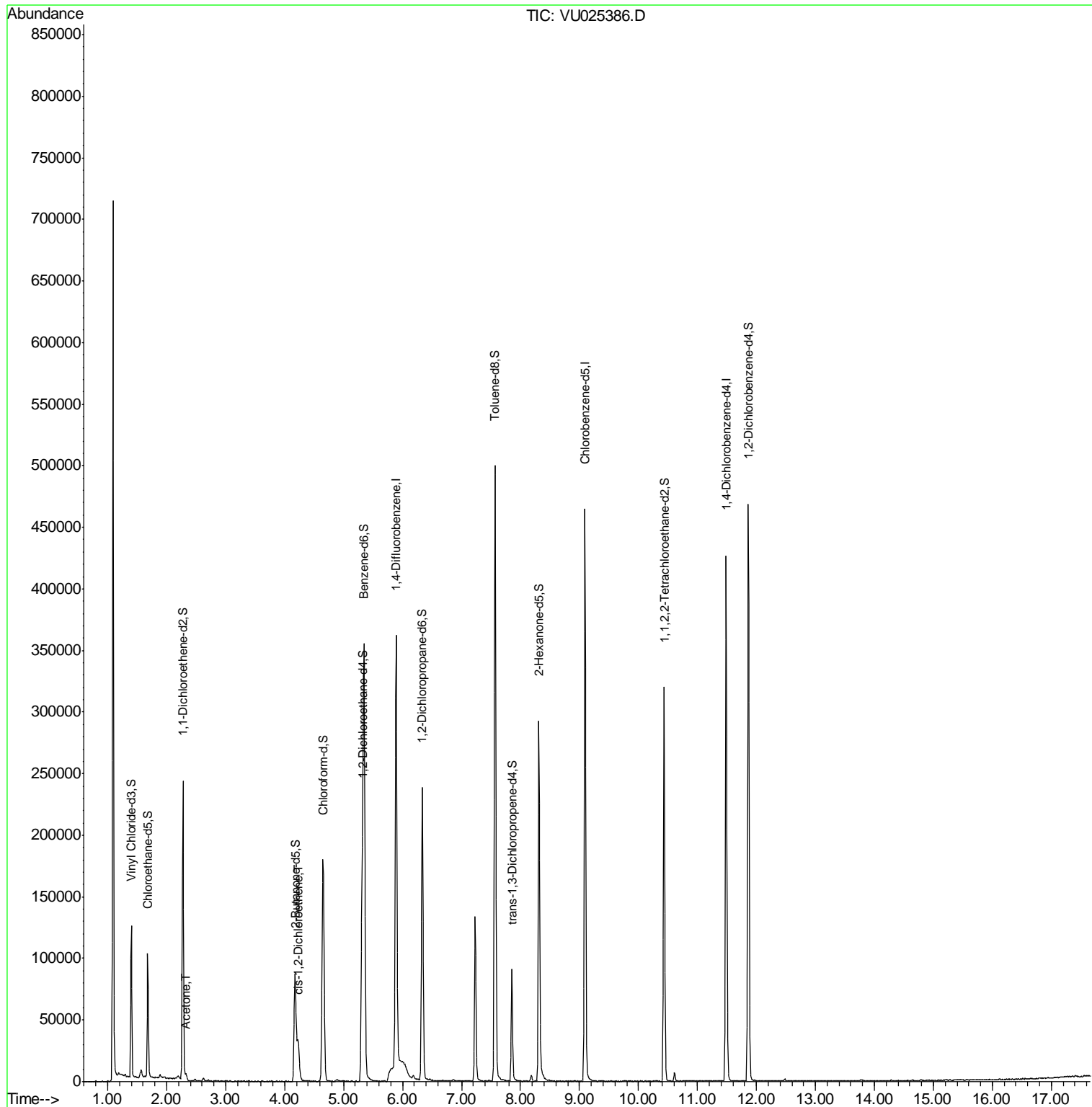
Quant Time: Jul 13 14:57:20 2018

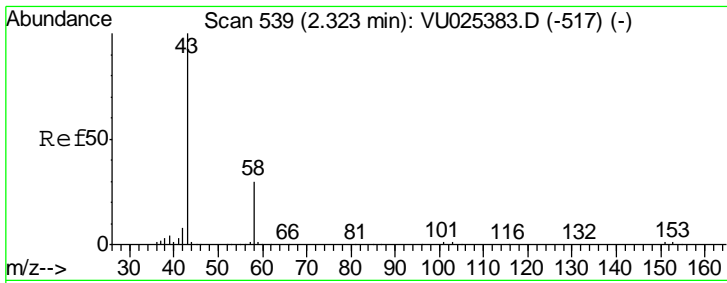
Quant Method : Z:\VOASRV\HPCHEM1\MSVOA\_U\METHOD\SOMULM062918WMA.M

Quant Title : VOC Analysis

QLast Update : Fri Jul 13 14:43:42 2018

Response via : Initial Calibration

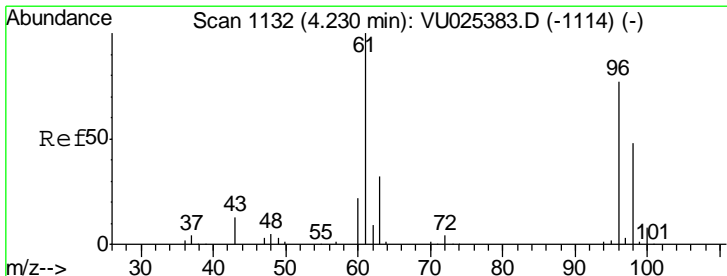
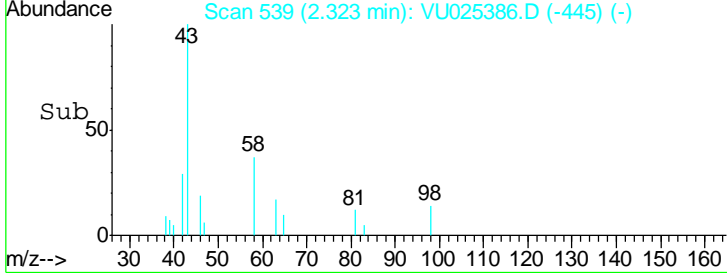
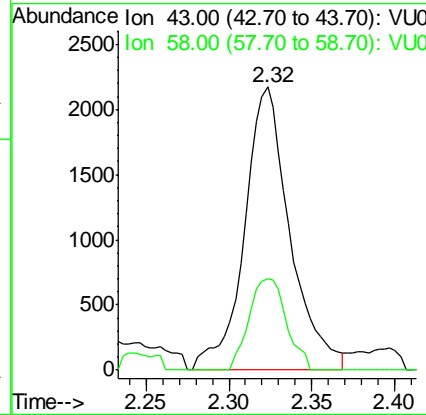
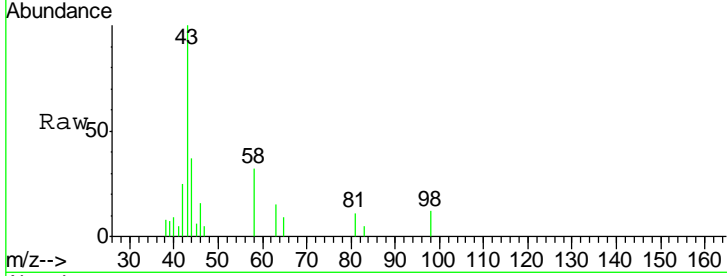




#13  
 Acetone  
 Concen: 2.756 ug/L  
 RT: 2.32 min Scan# 539  
 Delta R.T. 0.00 min  
 Lab File: VU025386.D  
 Acq: 13 Jul 2018 12:02

Instrument :  
 MSVOA\_U  
 ClientSampled :  
 BEMG1

Tgt Ion	Resp	Lower	Upper
43	100		
58	26.4	0.0	59.4



#20  
 cis-1,2-Dichloroethene  
 Concen: 7.096 ug/L  
 RT: 4.23 min Scan# 1132  
 Delta R.T. 0.00 min  
 Lab File: VU025386.D  
 Acq: 13 Jul 2018 12:02

Tgt Ion	Resp	Lower	Upper
96	100		
61	124.6	93.4	173.6
68	0.0	0.0	0.0

