

Data Path : Z:\VOASRV\HPCHEM1\MSVOA_U\DATA\VU071318\
 Data File : VU025389.D
 Acq On : 13 Jul 2018 13:16
 Operator : MD/SY
 Sample : J3937-06
 Misc : 5.0mL/MSVOA_U/WATER
 ALS Vial : 8 Sample Multiplier: 1

Instrument :
 MSVOA_U
 ClientSampleId :
 BEMG4

Integration Parameters: LSCINT.P

Integrator: RTE
 Smoothing : OFF Filtering: 5
 Sampling : 1 Min Area: 0 % of largest Peak
 Start Thrs: 0.2 Max Peaks: 100
 Stop Thrs : 0 Peak Location: TOP

If leading or trailing edge < 100 prefer < Baseline drop else tangent >
 Peak separation: 5

Method : Z:\VOASRV\HPCHEM1\MSVOA_U\METHOD\SOMULM062918WMA.M
 Title : VOC Analysis

Signal : TIC

peak #	R.T. min	first scan	max scan	last scan	PK TY	peak height	corr. area	corr. % max.	% of total
1	0.645	16	17	19	rBV	126	47	0.00%	0.001%
2	0.687	24	30	33	rBV2	280	252	0.02%	0.003%
3	0.706	33	36	38	rBV	187	151	0.01%	0.002%
4	0.741	44	47	48	rBV	100	48	0.00%	0.001%
5	0.757	50	52	53	rVB	225	65	0.01%	0.001%
6	0.812	67	69	73	rVB	214	124	0.01%	0.001%
7	0.831	73	75	76	rBV	30	14	0.00%	0.000%
8	0.841	76	78	79	rBV	84	41	0.00%	0.000%
9	0.860	82	84	87	rVB	277	166	0.02%	0.002%
10	0.883	87	91	94	rVB	156	98	0.01%	0.001%
11	0.905	94	98	99	rBV	211	154	0.02%	0.002%
12	0.986	119	123	126	rBV2	198	174	0.02%	0.002%
13	1.089	147	155	177	rBV	571910	671371	66.03%	7.585%
14	1.400	245	252	265	rVB	118923	125719	12.36%	1.420%
15	1.680	332	339	357	rVB	96201	122302	12.03%	1.382%
16	2.275	514	524	535	rBV	225563	338341	33.27%	3.823%
17	2.619	625	631	642	rBV3	2743	3731	0.37%	0.042%
18	2.706	654	658	668	rVB3	787	936	0.09%	0.011%
19	2.744	668	670	672	rBV	249	154	0.02%	0.002%
20	2.828	692	696	697	rBV2	675	337	0.03%	0.004%
21	3.053	762	766	767	rBV	181	102	0.01%	0.001%
22	3.069	768	771	772	rBV	127	74	0.01%	0.001%
23	3.111	782	784	789	rBV	227	144	0.01%	0.002%
24	3.195	808	810	812	rBV	212	99	0.01%	0.001%
25	3.265	829	832	835	rBV2	255	256	0.03%	0.003%
26	3.297	840	842	849	rVB	301	214	0.02%	0.002%
27	3.365	860	863	865	rBV	195	102	0.01%	0.001%
28	3.391	870	871	876	rVB2	334	226	0.02%	0.003%
29	3.416	876	879	880	rBV2	274	133	0.01%	0.002%
30	3.442	884	887	889	rBV	215	117	0.01%	0.001%
31	3.484	895	900	901	rBV	374	298	0.03%	0.003%
32	3.613	938	940	942	rBV	248	115	0.01%	0.001%
33	3.674	955	959	963	rVB2	182	183	0.02%	0.002%
34	3.703	965	968	971	rBV	256	145	0.01%	0.002%

Data Path : Z:\VOASRV\HPCHEM1\MSVOA_U\DATA\VU071318\
 Data File : VU025389.D
 Acq On : 13 Jul 2018 13:16
 Operator : MD/SY
 Sample : J3937-06
 Misc : 5.0mL/MSVOA_U/WATER
 ALS Vial : 8 Sample Multiplier: 1

Instrument :
 MSVOA_U
 ClientSampleId :
 BEMG4

Integration Parameters: LSCINT.P

Integrator: RTE
 Smoothing : OFF
 Sampling : 1
 Start Thrs: 0.2
 Stop Thrs : 0

Filtering: 5
 Min Area: 0 % of largest Peak
 Max Peaks: 100
 Peak Location: TOP

If leading or trailing edge < 100 prefer < Baseline drop else tangent >
 Peak separation: 5

Method : Z:\VOASRV\HPCHEM1\MSVOA_U\METHOD\SOMULM062918WMA.M
 Title : VOC Analysis

35	3.751	981	983	985	rVB	144	39	0.00%	0.000%
36	3.777	988	991	993	rBV2	270	157	0.02%	0.002%
37	3.799	993	998	1000	rVB	208	170	0.02%	0.002%
38	3.812	1000	1002	1006	rBV	164	98	0.01%	0.001%
39	3.896	1024	1028	1032	rBV	202	192	0.02%	0.002%
40	3.941	1040	1042	1045	rBV	82	46	0.00%	0.001%
41	3.960	1046	1048	1049	rBV	128	32	0.00%	0.000%
42	4.005	1059	1062	1067	rVB	292	247	0.02%	0.003%
43	4.108	1093	1094	1096	rVB	259	53	0.01%	0.001%
44	4.175	1096	1115	1141	rBV	84273	224496	22.08%	2.536%
45	4.532	1224	1226	1228	rBV	71	44	0.00%	0.000%
46	4.587	1241	1243	1245	rBV	137	68	0.01%	0.001%
47	4.651	1245	1263	1288	rVV	172712	403609	39.69%	4.560%
48	4.876	1329	1333	1335	rBV	544	479	0.05%	0.005%
49	5.002	1362	1372	1381	rVB2	627	1007	0.10%	0.011%
50	5.172	1423	1425	1429	rVB	365	199	0.02%	0.002%
51	5.346	1453	1479	1501	rBV2	337793	1016815	100.00%	11.488%
52	5.641	1569	1571	1573	rBV	215	124	0.01%	0.001%
53	5.693	1586	1587	1588	rBV	227	62	0.01%	0.001%
54	5.889	1598	1648	1666	rBV	395599	950061	93.43%	10.734%
55	6.333	1773	1786	1813	rVB	225661	456190	44.86%	5.154%
56	7.082	2017	2019	2021	rVB2	286	115	0.01%	0.001%
57	7.230	2054	2065	2088	rBV	128317	226657	22.29%	2.561%
58	7.378	2105	2111	2114	rBV4	669	877	0.09%	0.010%
59	7.442	2129	2131	2132	rBV	514	211	0.02%	0.002%
60	7.567	2156	2170	2189	rBV	471904	824606	81.10%	9.317%
61	7.854	2246	2259	2279	rBV	88181	151930	14.94%	1.717%
62	8.124	2337	2343	2346	rBV3	333	375	0.04%	0.004%
63	8.149	2349	2351	2353	rVV2	401	251	0.02%	0.003%
64	8.178	2353	2360	2371	rVB	3709	6706	0.66%	0.076%
65	8.313	2388	2402	2434	rBV	282792	498487	49.02%	5.632%
66	8.574	2481	2483	2487	rBV2	294	204	0.02%	0.002%
67	8.696	2517	2521	2524	rBV2	342	335	0.03%	0.004%
68	8.847	2566	2568	2571	rVB2	269	121	0.01%	0.001%
69	8.960	2600	2603	2606	rVB	259	135	0.01%	0.002%
70	8.973	2606	2607	2609	rBV	149	62	0.01%	0.001%
71	9.091	2631	2644	2669	rBV	518852	849849	83.58%	9.602%

Data Path : Z:\VOASRV\HPCHEM1\MSVOA_U\DATA\VU071318\
 Data File : VU025389.D
 Acq On : 13 Jul 2018 13:16
 Operator : MD/SY
 Sample : J3937-06
 Misc : 5.0mL/MSVOA_U/WATER
 ALS Vial : 8 Sample Multiplier: 1

Instrument :
 MSVOA_U
 ClientSampleId :
 BEMG4

Integration Parameters: LSCINT.P

Integrator: RTE
 Smoothing : OFF Filtering: 5
 Sampling : 1 Min Area: 0 % of largest Peak
 Start Thrs: 0.2 Max Peaks: 100
 Stop Thrs : 0 Peak Location: TOP

If leading or trailing edge < 100 prefer < Baseline drop else tangent >
 Peak separation: 5

Method : Z:\VOASRV\HPCHEM1\MSVOA_U\METHOD\SOMULM062918WMA.M
 Title : VOC Analysis

72	9.336	2718	2720	2728	rBV	378	342	0.03%	0.004%
73	9.387	2729	2736	2744	rVB2	1017	1646	0.16%	0.019%
74	9.464	2757	2760	2765	rBV2	339	382	0.04%	0.004%
75	9.535	2780	2782	2785	rVB	214	96	0.01%	0.001%
76	9.628	2806	2811	2813	rBV2	423	339	0.03%	0.004%
77	9.667	2820	2823	2824	rBV2	264	144	0.01%	0.002%
78	9.760	2849	2852	2855	rBV	262	172	0.02%	0.002%
79	9.786	2857	2860	2866	rVB2	597	568	0.06%	0.006%
80	9.953	2909	2912	2913	rBV	249	116	0.01%	0.001%
81	10.072	2945	2949	2952	rBV	378	251	0.02%	0.003%
82	10.130	2965	2967	2972	rBV	244	158	0.02%	0.002%
83	10.239	2997	3001	3003	rBV2	498	307	0.03%	0.003%
84	10.313	3020	3024	3026	rBV	519	379	0.04%	0.004%
85	10.387	3039	3047	3049	rBV2	362	461	0.05%	0.005%
86	10.435	3049	3062	3083	rVV	310152	497806	48.96%	5.624%
87	10.542	3093	3095	3100	rVB	269	191	0.02%	0.002%
88	10.612	3109	3117	3131	rVB4	5295	8827	0.87%	0.100%
89	10.947	3218	3221	3227	rBV2	334	315	0.03%	0.004%
90	11.220	3304	3306	3311	rBV2	295	199	0.02%	0.002%
91	11.297	3327	3330	3336	rBV2	280	305	0.03%	0.003%
92	11.487	3377	3389	3408	rBV	467149	744618	73.23%	8.413%
93	11.863	3493	3506	3525	rBV	444372	711642	69.99%	8.040%

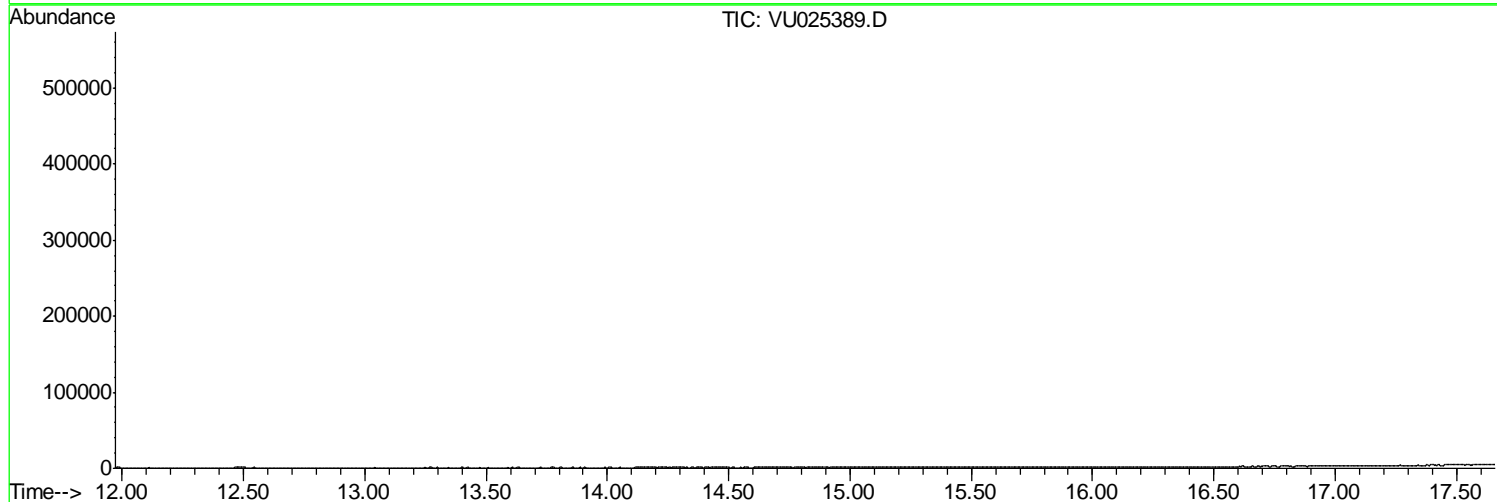
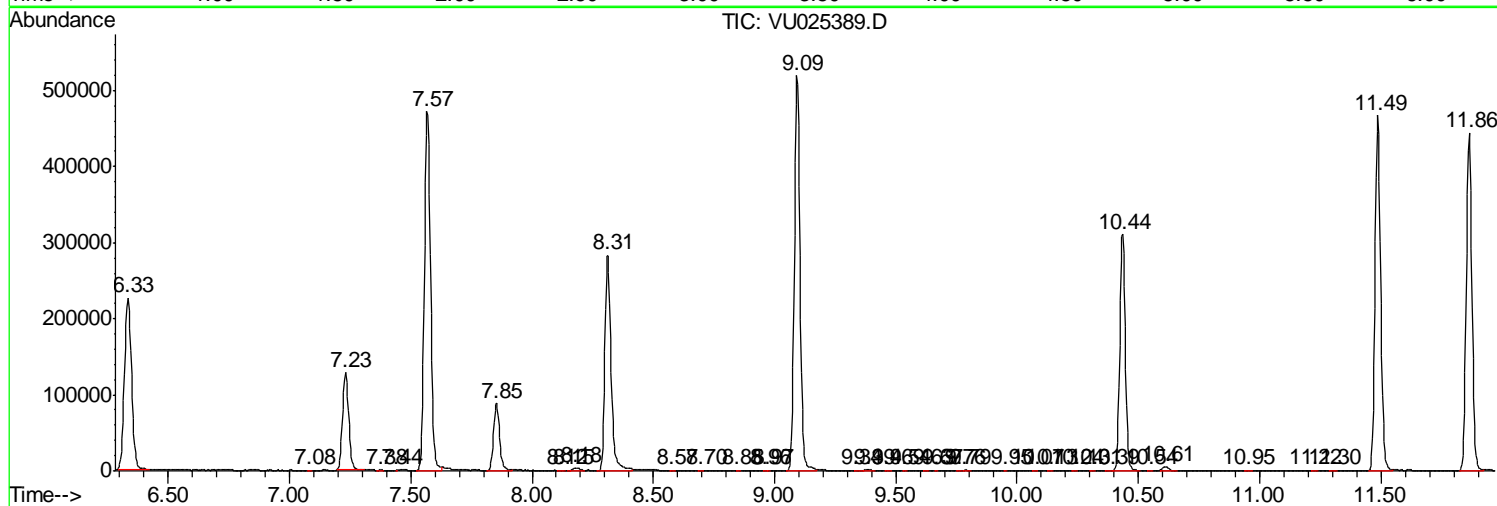
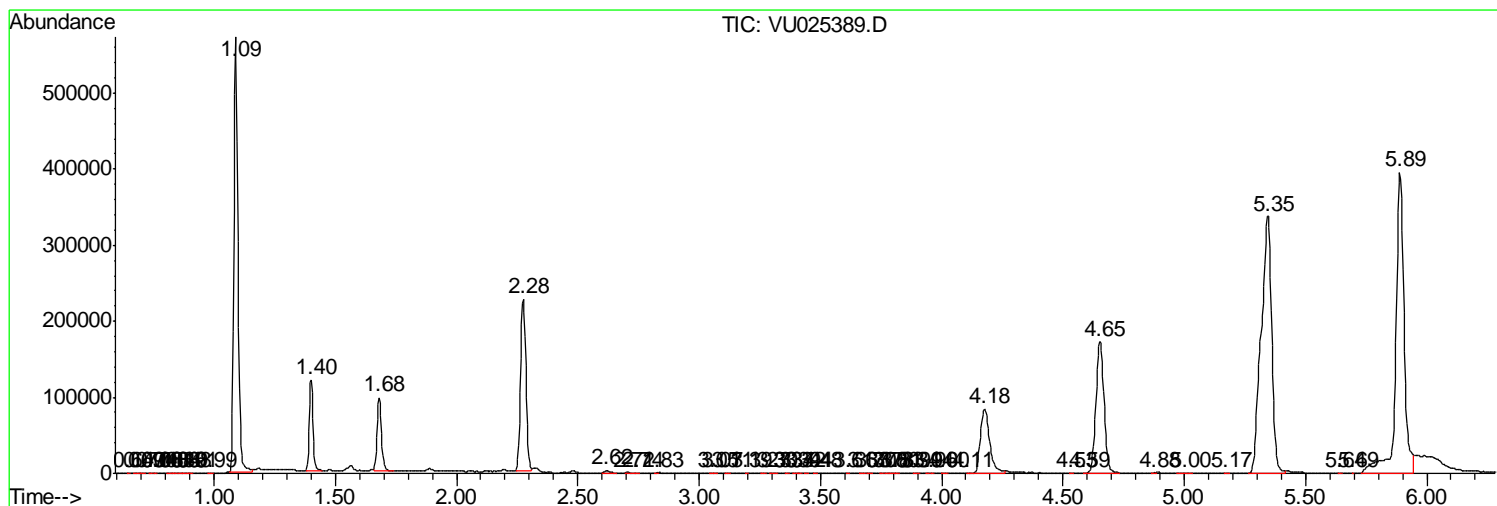
Sum of corrected areas: 8850806

Data Path : Z:\VOASRV\HPCHEM1\MSVOA_U\DATA\VU071318\
 Data File : VU025389.D
 Acq On : 13 Jul 2018 13:16
 Operator : MD/SY
 Sample : J3937-06
 Misc : 5.0mL/MSVOA_U/WATER
 ALS Vial : 8 Sample Multiplier: 1

Instrument :
 MSVOA_U
 ClientSampled :
 BEMG4

Quant Method : Z:\VOASRV\HPCHEM1\MSVOA_U\METHOD\SOMULM062918WMA.M
 Quant Title : VOC Analysis

TIC Library : C:\DATABASE\NIST11.L
 TIC Integration Parameters: LSCINT.P



Data Path : Z:\VOASRV\HPCHEM1\MSVOA_U\DATA\VU071318\
Data File : VU025389.D
Acq On : 13 Jul 2018 13:16
Operator : MD/SY
Sample : J3937-06
Misc : 5.0mL/MSVOA_U/WATER
ALS Vial : 8 Sample Multiplier: 1

Instrument :
MSVOA_U
ClientSampleId :
BEMG4

Quant Method : Z:\VOASRV\HPCHEM1\MSVOA_U\METHOD\SOMULM062918WMA.M
Quant Title : VOC Analysis

TIC Library : C:\DATABASE\NIST11.L
TIC Integration Parameters: LSCINT.P

No Library Search Compounds Detected

Data Path : Z:\VOASRV\HPCHEM1\MSVOA_U\DATA\VU071318\
Data File : VU025389.D
Acq On : 13 Jul 2018 13:16
Operator : MD/SY
Sample : J3937-06
Misc : 5.0mL/MSVOA_U/WATER
ALS Vial : 8 Sample Multiplier: 1

Instrument :
MSVOA_U
ClientSampleId :
BEMG4

Quant Method : Z:\VOASRV\HPCHEM1\MSVOA_U\METHOD\SOMULM062918WMA.M
Quant Title : VOC Analysis

TIC Library : C:\DATABASE\NIST11.L
TIC Integration Parameters: LSCINT.P

TIC Top Hit name	RT	EstConc	Units	Response	--Internal Standard--			
					#	RT	Resp	Conc
