

Data Path : Z:\voasrv\HPCHEM1\MSVOA\_U\Data\VU071322\  
 Data File : VU049705.D  
 Acq On : 13 Jul 2022 16:13  
 Operator : SY/MD  
 Sample : N3702-08  
 Misc : 5.0mL/MSVOA\_U/WATER  
 ALS Vial : 11 Sample Multiplier: 1

Instrument :  
 MSVOA\_U  
 ClientSampleId :  
 VHBLK002

Quant Time: Jul 14 05:10:12 2022  
 Quant Method : Z:\voasrv\HPCHEM1\MSVOA\_U\Method\SFAMULM071122WMA.M  
 Quant Title : VOC Analysis  
 QLast Update : Thu Jul 14 05:07:30 2022  
 Response via : Initial Calibration

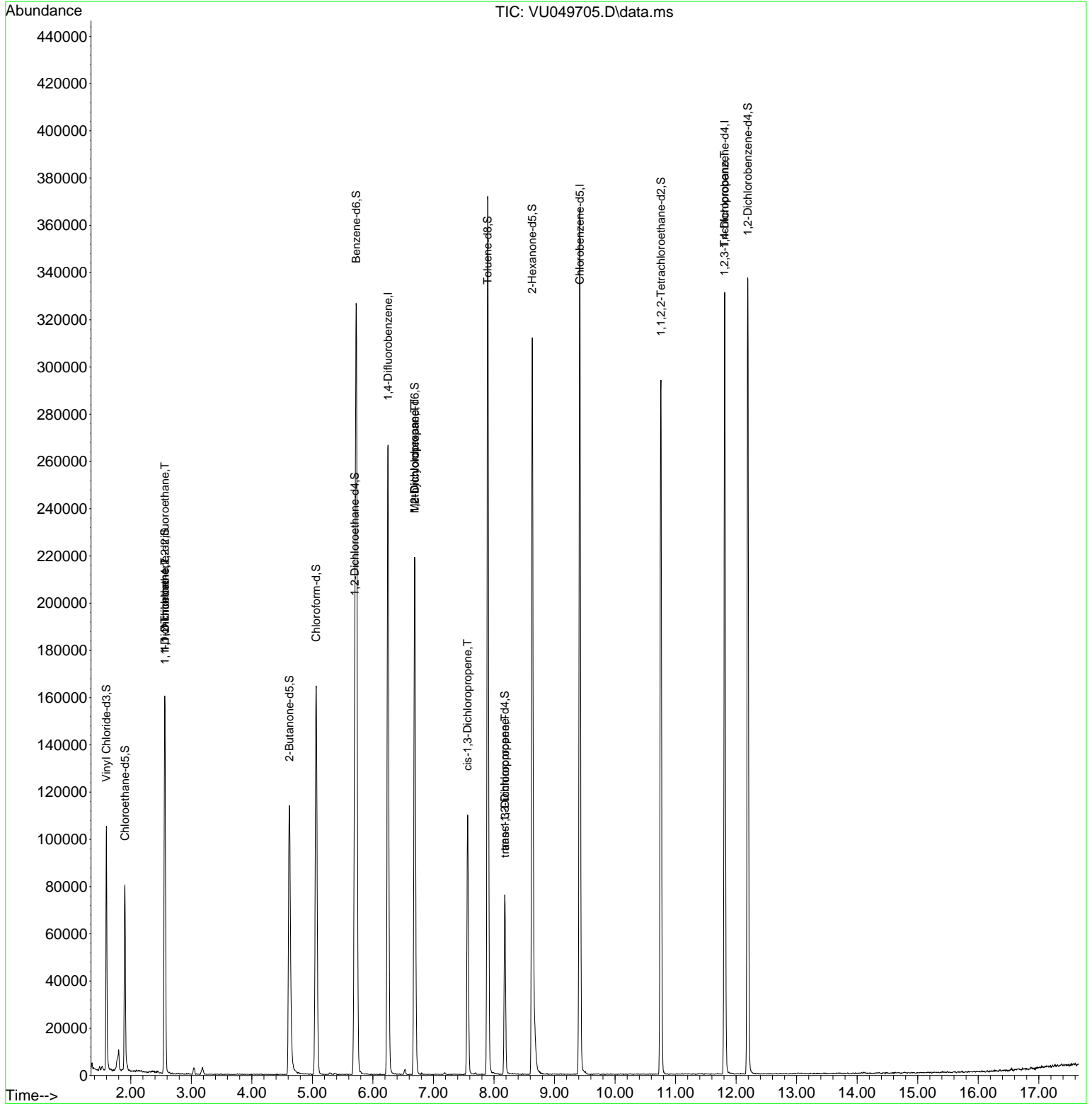
Compound	R.T.	QIon	Response	Conc	Units	Dev(Min)
Internal Standards						
1) 1,4-Difluorobenzene	6.250	114	200077	50.000	ug/L	0.00
28) Chlorobenzene-d5	9.417	117	189788	50.000	ug/L	0.00
58) 1,4-Dichlorobenzene-d4	11.812	152	82274	50.000	ug/L	0.00
System Monitoring Compounds						
4) Vinyl Chloride-d3	1.597	65	72955	43.216	ug/L	0.00
Spiked Amount	50.000	Range 60 - 135	Recovery =	86.440%		
7) Chloroethane-d5	1.903	69	57293	46.952	ug/L	0.00
Spiked Amount	50.000	Range 70 - 130	Recovery =	93.900%		
11) 1,1-Dichloroethene-d2	2.562	63	99298	33.300	ug/L	0.00
Spiked Amount	50.000	Range 60 - 125	Recovery =	66.600%		
21) 2-Butanone-d5	4.620	46	170689	118.443	ug/L	0.00
Spiked Amount	100.000	Range 40 - 130	Recovery =	118.440%		
24) Chloroform-d	5.063	84	150441	50.315	ug/L	0.00
Spiked Amount	50.000	Range 70 - 125	Recovery =	100.640%		
26) 1,2-Dichloroethane-d4	5.700	65	106172	52.467	ug/L	0.00
Spiked Amount	50.000	Range 70 - 125	Recovery =	104.940%		
32) Benzene-d6	5.726	84	283783	49.219	ug/L	0.00
Spiked Amount	50.000	Range 70 - 125	Recovery =	98.440%		
36) 1,2-Dichloropropane-d6	6.690	67	101378	52.275	ug/L	0.00
Spiked Amount	50.000	Range 70 - 120	Recovery =	104.540%		
41) Toluene-d8	7.896	98	236755	47.152	ug/L	0.00
Spiked Amount	50.000	Range 80 - 120	Recovery =	94.300%		
43) trans-1,3-Dichloroprop...	8.179	79	39617	48.486	ug/L	0.00
Spiked Amount	50.000	Range 60 - 125	Recovery =	96.980%		
47) 2-Hexanone-d5	8.632	63	95933	109.969	ug/L	0.00
Spiked Amount	100.000	Range 45 - 130	Recovery =	109.970%		
56) 1,1,2,2-Tetrachloroeth...	10.758	84	145776	53.721	ug/L	0.00
Spiked Amount	50.000	Range 65 - 120	Recovery =	107.440%		
66) 1,2-Dichlorobenzene-d4	12.195	152	83282	53.688	ug/L	0.00
Spiked Amount	50.000	Range 80 - 120	Recovery =	107.380%		
Target Compounds						
10) 1,1,2-Trichloro-1,2,2-...	2.562	101	831	0.539	ug/L #	20
12) 1,1-Dichloroethene	2.565	96	840	0.587	ug/L #	1
35) Methylcyclohexane	6.690	83	22774	8.404	ug/L #	17
37) 1,2-Dichloropropane	6.690	63	11397	5.764	ug/L #	89
39) cis-1,3-Dichloropropene	7.565	75	2809	1.053	ug/L #	75
44) trans-1,3-Dichloropropene	8.182	75	1934	0.772	ug/L #	72
60) 1,2,3-Trichloropropane	11.809	75	11277	5.146	ug/L #	69

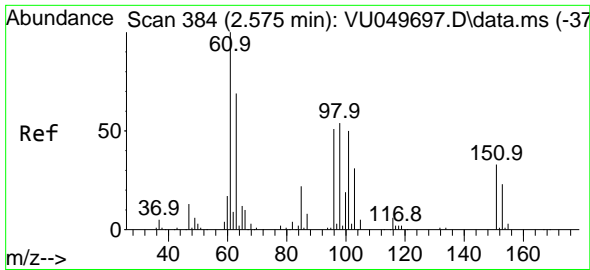
(#) = qualifier out of range (m) = manual integration (+) = signals summed

Data Path : Z:\voasrv\HPCHEM1\MSVOA\_U\Data\VU071322\  
 Data File : VU049705.D  
 Acq On : 13 Jul 2022 16:13  
 Operator : SY/MD  
 Sample : N3702-08  
 Misc : 5.0mL/MSVOA\_U/WATER  
 ALS Vial : 11 Sample Multiplier: 1

Instrument :  
 MSVOA\_U  
 ClientSampleId :  
 VHBLK002

Quant Time: Jul 14 05:10:12 2022  
 Quant Method : Z:\voasrv\HPCHEM1\MSVOA\_U\Method\SFAMULM071122WMA.M  
 Quant Title : VOC Analysis  
 QLast Update : Thu Jul 14 05:07:30 2022  
 Response via : Initial Calibration

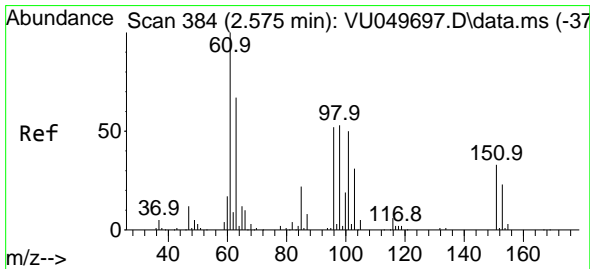
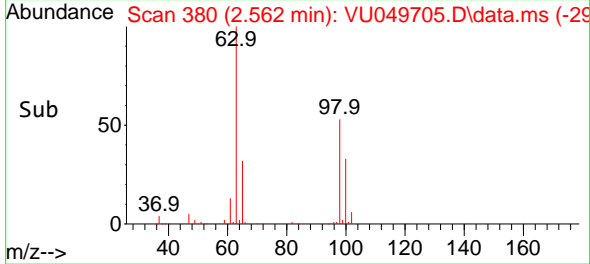
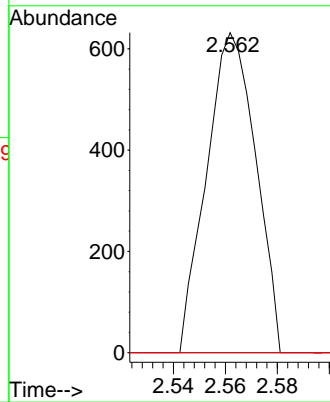
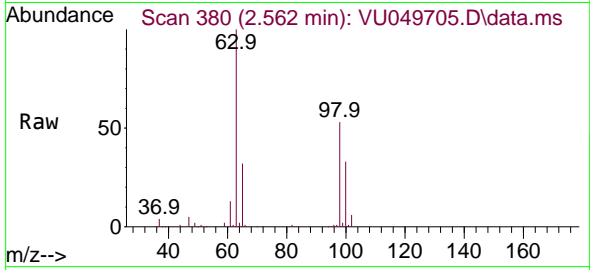




#10  
 1,1,2-Trichloro-1,2,2-trifluoroethane  
 Concen: 0.539 ug/L  
 RT: 2.562 min Scan# 381  
 Delta R.T. -0.013 min  
 Lab File: VU049705.D  
 Acq: 13 Jul 2022 16:13

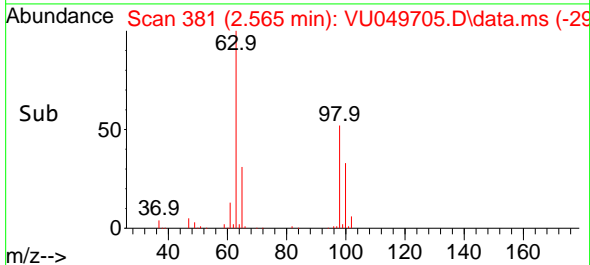
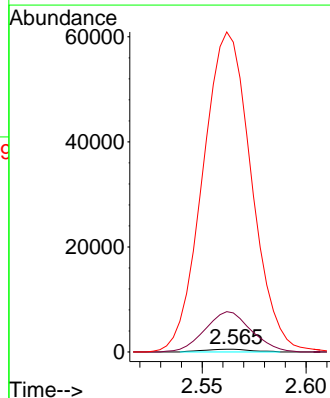
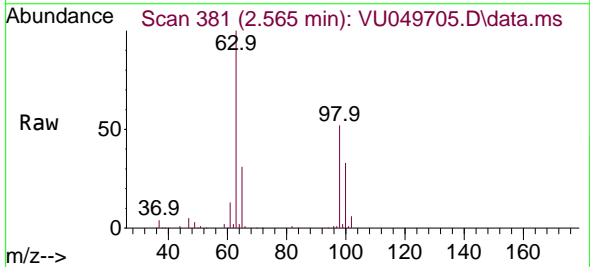
Instrument :  
 MSVOA\_U  
 ClientSampleId :  
 VHBLK002

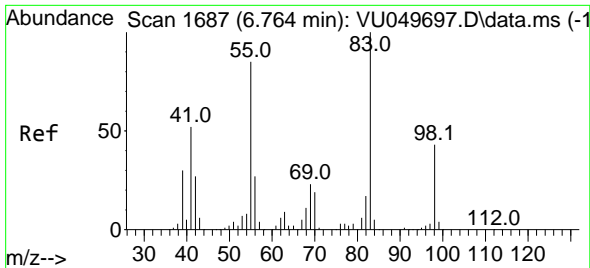
Tgt Ion:101 Resp: 831  
 Ion Ratio Lower Upper  
 101 100  
 85 0.0 37.3 55.9#  
 151 0.0 56.9 85.3#



#12  
 1,1-Dichloroethene  
 Concen: 0.587 ug/L  
 RT: 2.565 min Scan# 381  
 Delta R.T. -0.010 min  
 Lab File: VU049705.D  
 Acq: 13 Jul 2022 16:13

Tgt Ion: 96 Resp: 840  
 Ion Ratio Lower Upper  
 96 100  
 61 1393.8 129.6 240.6#  
 63 11067.9 79.0 146.6#

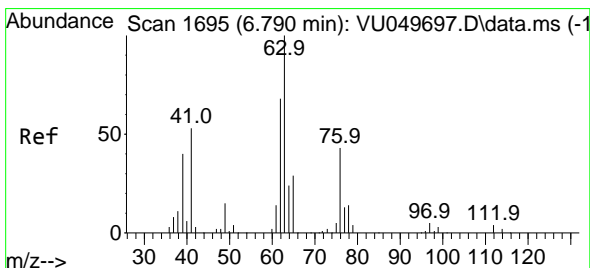
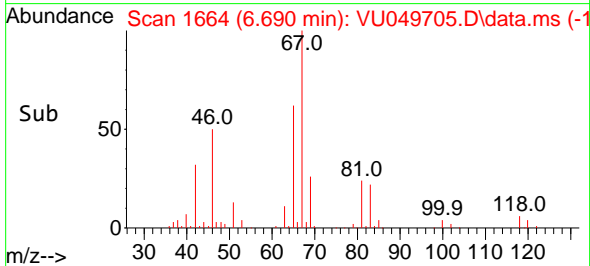
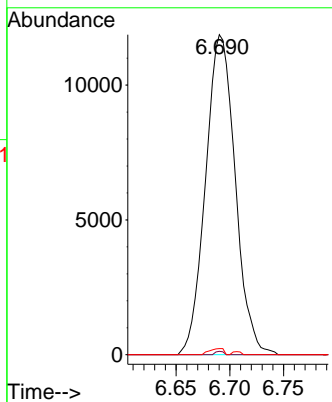
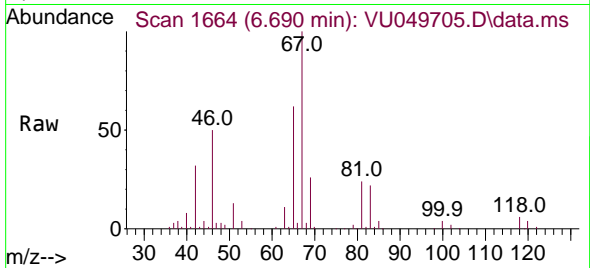




#35  
 Methylcyclohexane  
 Concen: 8.404 ug/L  
 RT: 6.690 min Scan# 1664  
 Delta R.T. -0.074 min  
 Lab File: VU049705.D  
 Acq: 13 Jul 2022 16:13

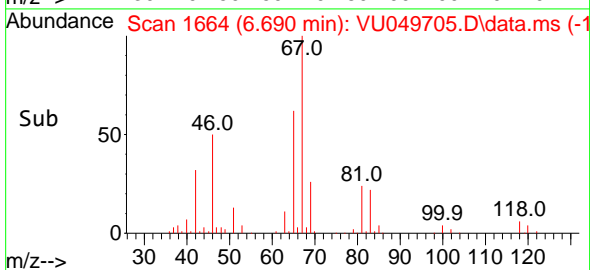
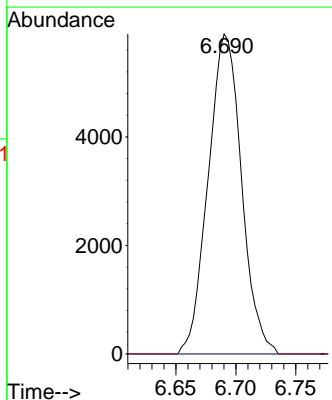
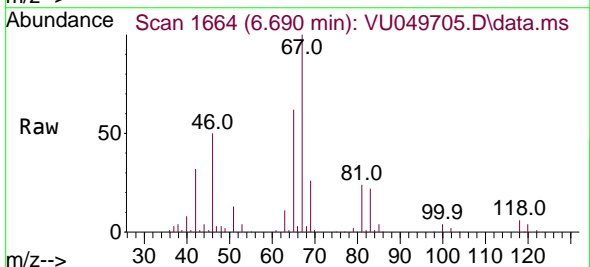
Instrument : MSVOA\_U  
 ClientSampleId : VHBLK002

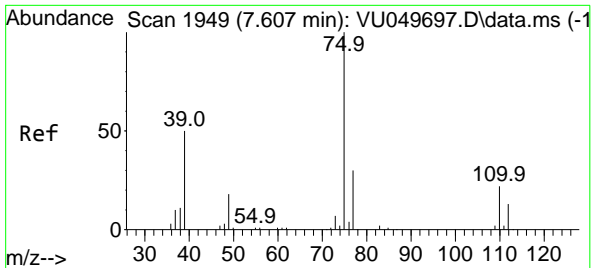
Tgt Ion	Resp	Lower	Upper
83	22774		
55	0.3	66.0	99.0#
98	0.9	34.6	51.8#



#37  
 1,2-Dichloropropane  
 Concen: 5.764 ug/L  
 RT: 6.690 min Scan# 1664  
 Delta R.T. -0.100 min  
 Lab File: VU049705.D  
 Acq: 13 Jul 2022 16:13

Tgt Ion	Resp	Lower	Upper
63	11397		
112	0.0	2.8	4.2#

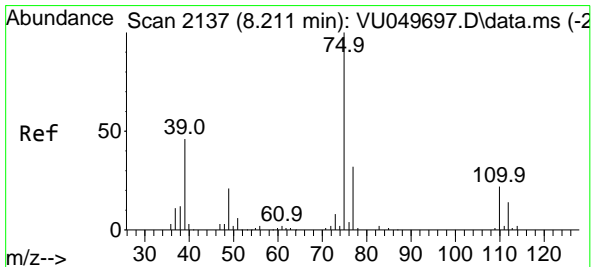
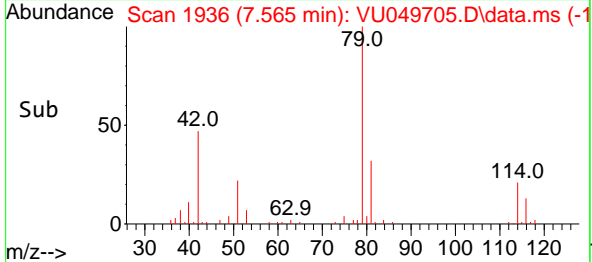
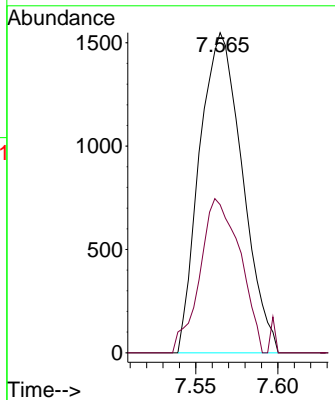
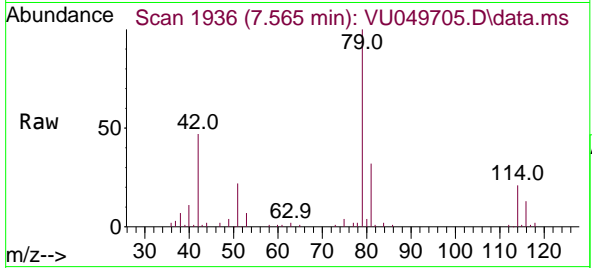




#39  
 cis-1,3-Dichloropropene  
 Concen: 1.053 ug/L  
 RT: 7.565 min Scan# 1936  
 Delta R.T. -0.042 min  
 Lab File: VU049705.D  
 Acq: 13 Jul 2022 16:13

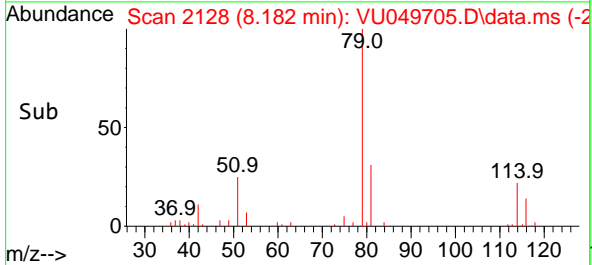
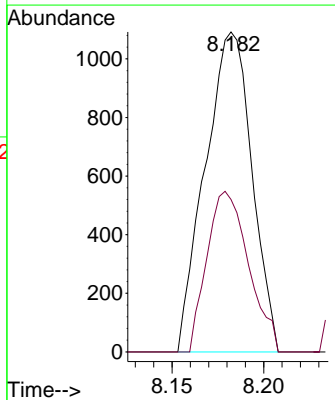
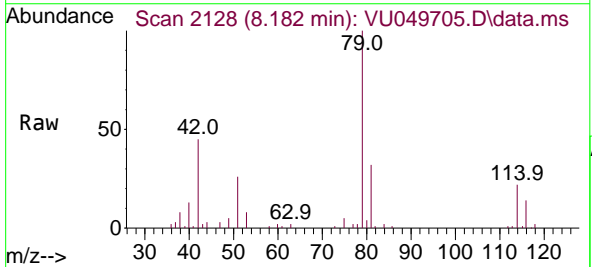
Instrument : MSVOA\_U  
 ClientSampleId : VHBLK002

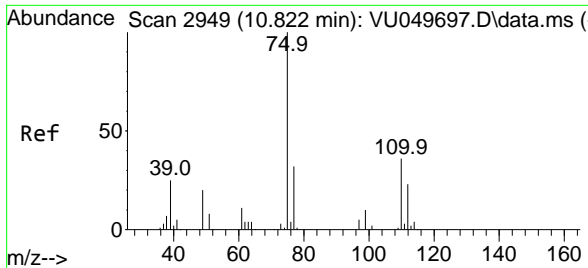
Tgt Ion: 75 Resp: 2809  
 Ion Ratio Lower Upper  
 75 100  
 77 46.3 22.6 42.0#



#44  
 trans-1,3-Dichloropropene  
 Concen: 0.772 ug/L  
 RT: 8.182 min Scan# 2128  
 Delta R.T. -0.029 min  
 Lab File: VU049705.D  
 Acq: 13 Jul 2022 16:13

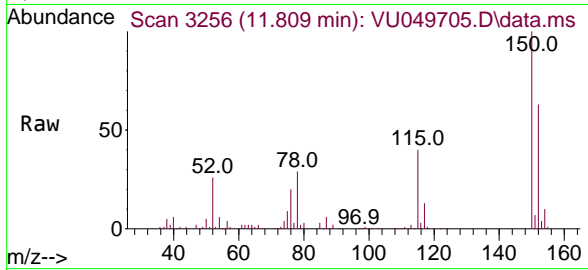
Tgt Ion: 75 Resp: 1934  
 Ion Ratio Lower Upper  
 75 100  
 77 47.6 22.5 41.9#





#60  
 1,2,3-Trichloropropane  
 Concen: 5.146 ug/L  
 RT: 11.809 min Scan# 31  
 Delta R.T. 0.987 min  
 Lab File: VU049705.D  
 Acq: 13 Jul 2022 16:13

Instrument :  
 MSVOA\_U  
 ClientSampleId :  
 VHBLK002



Tgt Ion: 75 Resp: 11277

Ion	Ratio	Lower	Upper
75	100		
77	31.5	25.5	38.3
110	2.4	28.9	43.3#

