

Data Path : Z:\voasrv\HPCHEM1\MSVOA_U\Data\VU071425\
 Data File : VU063501.D
 Acq On : 14 Jul 2025 10:35
 Operator : MD/SY
 Sample : VU0714WBL01
 Misc : 5mL/MSVOA_U/WATER
 ALS Vial : 4 Sample Multiplier: 1

Instrument :
 MSVOA_U
 ClientSampleId :
 VU0714WBL01

Integration Parameters: RTEINT.P
 Integrator: RTE
 Smoothing : ON Filtering: 5
 Sampling : 1 Min Area: 3 % of largest Peak
 Start Thrs: 0.2 Max Peaks: 100
 Stop Thrs : 0 Peak Location: TOP

If leading or trailing edge < 100 prefer < Baseline drop else tangent >
 Peak separation: 5

Method : Z:\voasrv\HPCHEM1\MSVOA_U\Method\82U070825W.M
 Title : SW846 8260

Signal : TIC: VU063501.D\data.ms

peak #	R.T. min	first scan	max scan	last scan	PK TY	peak height	corr. area	corr. % max.	% of total
1	5.277	1226	1240	1254	rBV2	83093	182227	33.16%	5.896%
2	5.361	1255	1266	1291	rVB	148033	322972	58.77%	10.449%
3	5.692	1358	1369	1402	rBV2	87537	193127	35.14%	6.248%
4	6.238	1525	1539	1567	rBV	204793	447396	81.41%	14.475%
5	7.888	2040	2052	2093	rBV	249544	471511	85.80%	15.255%
6	9.409	2513	2525	2553	rBV	306000	548017	99.72%	17.730%
7	10.624	2892	2903	2935	rBV	218647	376107	68.44%	12.168%
8	11.804	3258	3270	3303	rBV	319747	549548	100.00%	17.780%

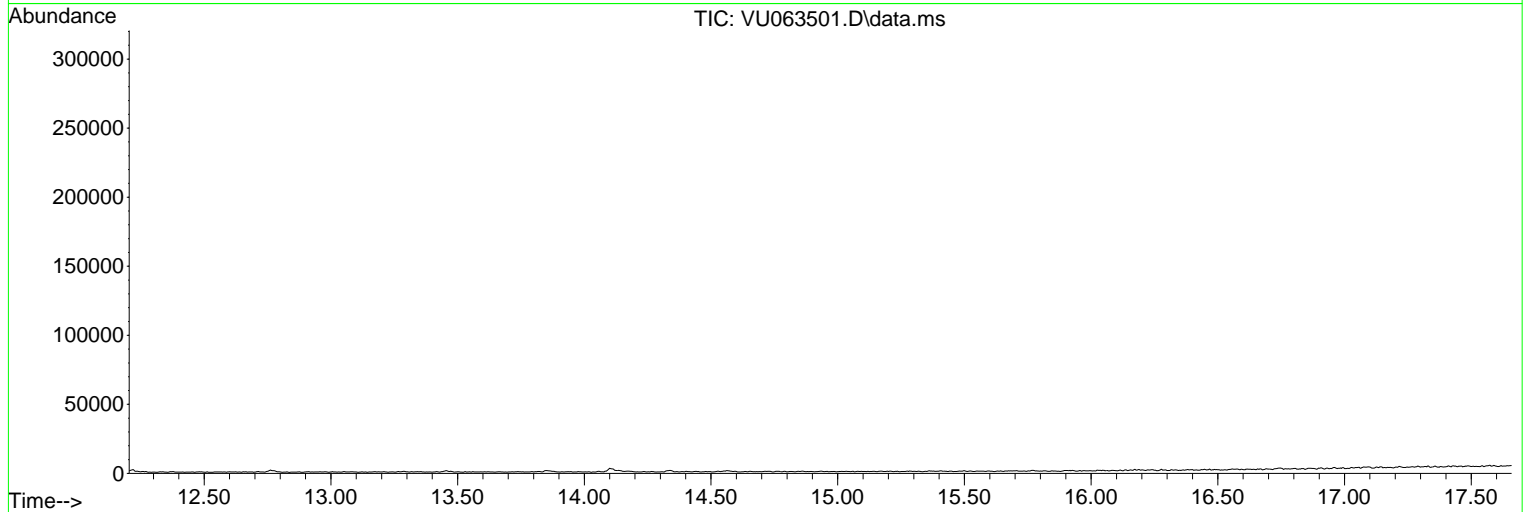
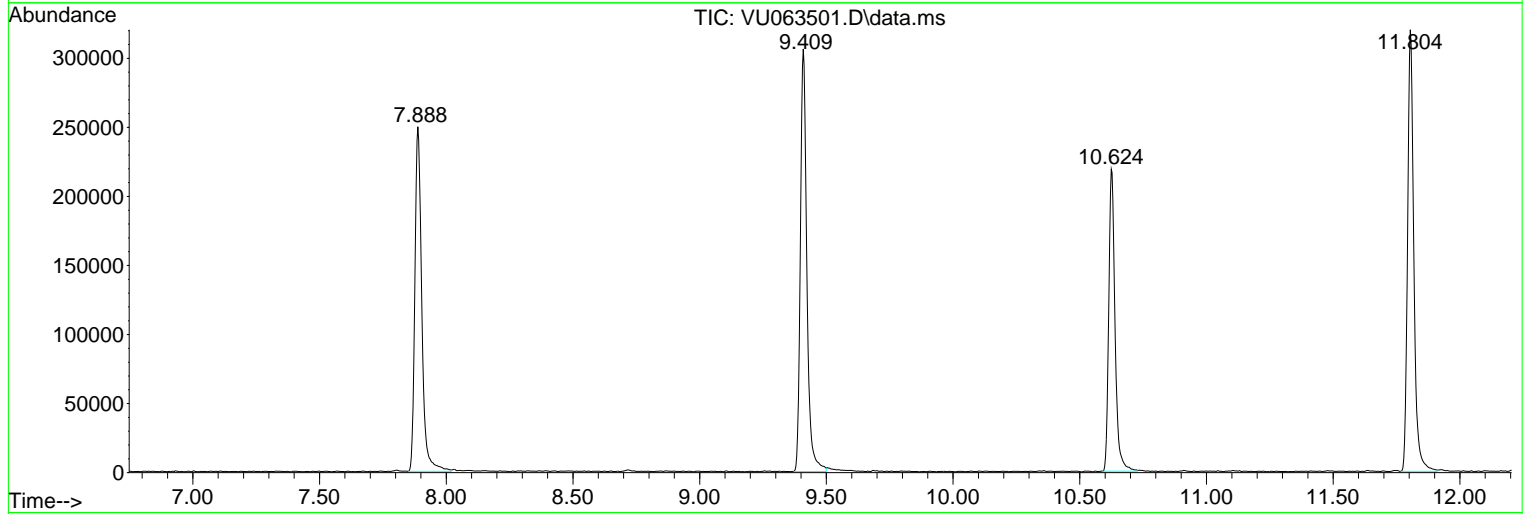
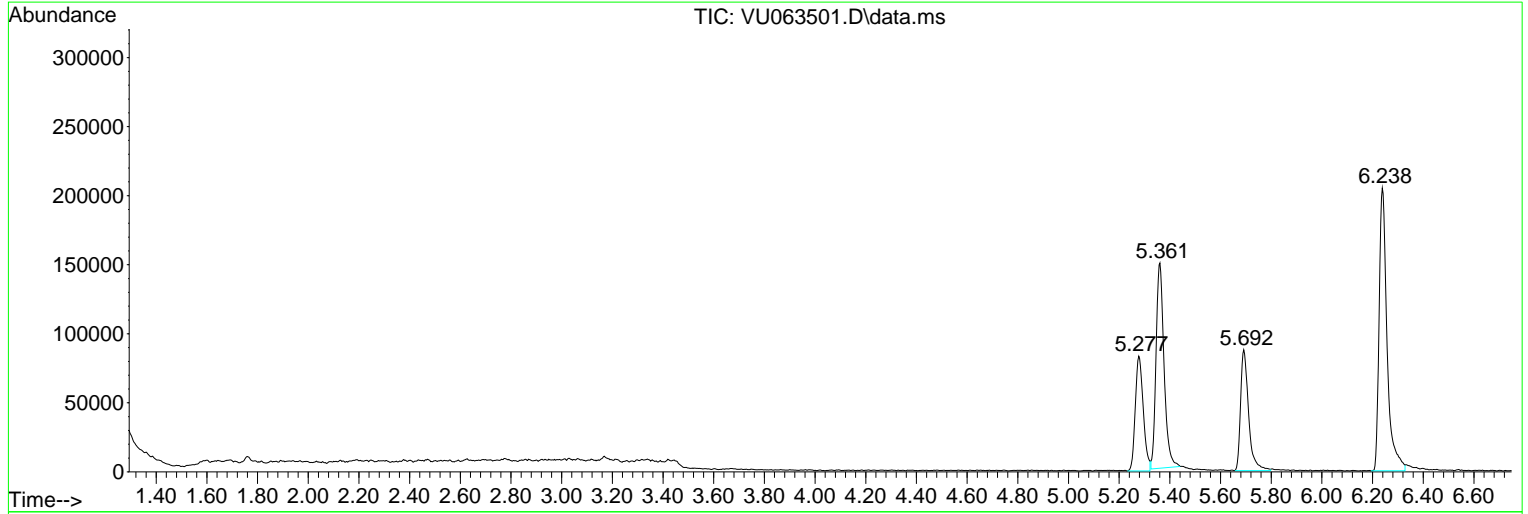
Sum of corrected areas: 3090905

Data Path : Z:\voasrv\HPCHEM1\MSVOA_U\Data\VU071425\
 Data File : VU063501.D
 Acq On : 14 Jul 2025 10:35
 Operator : MD/SY
 Sample : VU0714WBL01
 Misc : 5mL/MSVOA_U/WATER
 ALS Vial : 4 Sample Multiplier: 1

Instrument :
 MSVOA_U
 ClientSampleId :
 VU0714WBL01

Quant Method : Z:\voasrv\HPCHEM1\MSVOA_U\Method\82U070825W.M
 Quant Title : SW846 8260

TIC Library : C:\Database\NIST20.L
 TIC Integration Parameters: LSCINT.P



Library Search Compound Report

Data Path : Z:\voasrv\HPCHEM1\MSVOA_U\Data\VU071425\
Data File : VU063501.D
Acq On : 14 Jul 2025 10:35
Operator : MD/SY
Sample : VU0714WBL01
Misc : 5mL/MSVOA_U/WATER
ALS Vial : 4 Sample Multiplier: 1

Instrument :
MSVOA_U
ClientSampleId :
VU0714WBL01

Quant Method : Z:\voasrv\HPCHEM1\MSVOA_U\Method\82U070825W.M
Quant Title : SW846 8260

TIC Library : C:\Database\NIST20.L
TIC Integration Parameters: LSCINT.P

No Library Search Compounds Detected

Data Path : Z:\voasrv\HPCHEM1\MSVOA_U\Data\VU071425\
Data File : VU063501.D
Acq On : 14 Jul 2025 10:35
Operator : MD/SY
Sample : VU0714WBL01
Misc : 5mL/MSVOA_U/WATER
ALS Vial : 4 Sample Multiplier: 1

Instrument :
MSVOA_U
ClientSampleId :
VU0714WBL01

Quant Method : Z:\voasrv\HPCHEM1\MSVOA_U\Method\82U070825W.M
Quant Title : SW846 8260

TIC Library : C:\Database\NIST20.L
TIC Integration Parameters: LSCINT.P

TIC Top Hit name	RT	EstConc	Units	Response	--Internal Standard--			
					#	RT	Resp	Conc
