

Data Path : Z:\VOASRV\HPCHEM1\MSVOA_U\DATA\VU071618\
 Data File : VU025433.D
 Acq On : 16 Jul 2018 18:54
 Operator : MD/SY
 Sample : PB111022ZHE#01
 Misc : 5.0mL/MSVOA_U/WATER
 ALS Vial : 21 Sample Multiplier: 1

Instrument :
 MSVOA_U
 ClientSampleId :
 PB111022ZHE#01

Quant Time: Jul 17 03:56:36 2018
 Quant Method : Z:\VOASRV\HPCHEM1\MSVOA_U\METHOD\SOMULM071618WMA.M
 Quant Title : VOC Analysis
 QLast Update : Tue Jul 17 02:54:19 2018
 Response via : Initial Calibration

Internal Standards	R.T.	QIon	Response	Conc	Units	Dev(Min)
1) 1,4-Difluorobenzene	5.89	114	339960	50.00	ug/L	0.00
28) Chlorobenzene-d5	9.09	117	303154	50.00	ug/L	0.00
60) 1,4-Dichlorobenzene-d4	11.49	152	136779	50.00	ug/L	0.00

System Monitoring Compounds

4) Vinyl Chloride-d3	1.39	65	78346	42.86	ug/L	0.00
Spiked Amount	50.000	Range	60 - 135	Recovery	=	85.72%
7) Chloroethane-d5	1.68	69	63460	42.28	ug/L	0.00
Spiked Amount	50.000	Range	70 - 130	Recovery	=	84.56%
11) 1,1-Dichloroethene-d2	2.27	63	125811	31.85	ug/L	0.00
Spiked Amount	50.000	Range	60 - 125	Recovery	=	63.70%
21) 2-Butanone-d5	4.19	46	199139	107.82	ug/L	0.00
Spiked Amount	100.000	Range	40 - 130	Recovery	=	107.82%
24) Chloroform-d	4.65	84	191378	44.13	ug/L	0.00
Spiked Amount	50.000	Range	70 - 125	Recovery	=	88.26%
26) 1,2-Dichloroethane-d4	5.31	65	134881	45.58	ug/L	0.00
Spiked Amount	50.000	Range	70 - 125	Recovery	=	91.16%
32) Benzene-d6	5.34	84	366132	48.07	ug/L	0.00
Spiked Amount	50.000	Range	70 - 125	Recovery	=	96.14%
36) 1,2-Dichloropropane-d6	6.34	67	120250	48.81	ug/L	0.00
Spiked Amount	50.000	Range	70 - 120	Recovery	=	97.62%
41) Toluene-d8	7.57	98	346029	46.24	ug/L	0.00
Spiked Amount	50.000	Range	80 - 120	Recovery	=	92.48%
43) trans-1,3-Dichloropropene-	7.85	79	55179	44.14	ug/L	0.00
Spiked Amount	50.000	Range	60 - 125	Recovery	=	88.28%
47) 2-Hexanone-d5	8.31	63	157673	119.97	ug/L	0.00
Spiked Amount	100.000	Range	45 - 130	Recovery	=	119.97%
57) 1,1,2,2-Tetrachloroethane-	10.44	84	181999	48.12	ug/L	0.00
Spiked Amount	50.000	Range	65 - 120	Recovery	=	96.24%
64) 1,2-Dichlorobenzene-d4	11.86	152	138880	48.59	ug/L	0.00
Spiked Amount	50.000	Range	80 - 120	Recovery	=	97.18%

Target Compounds

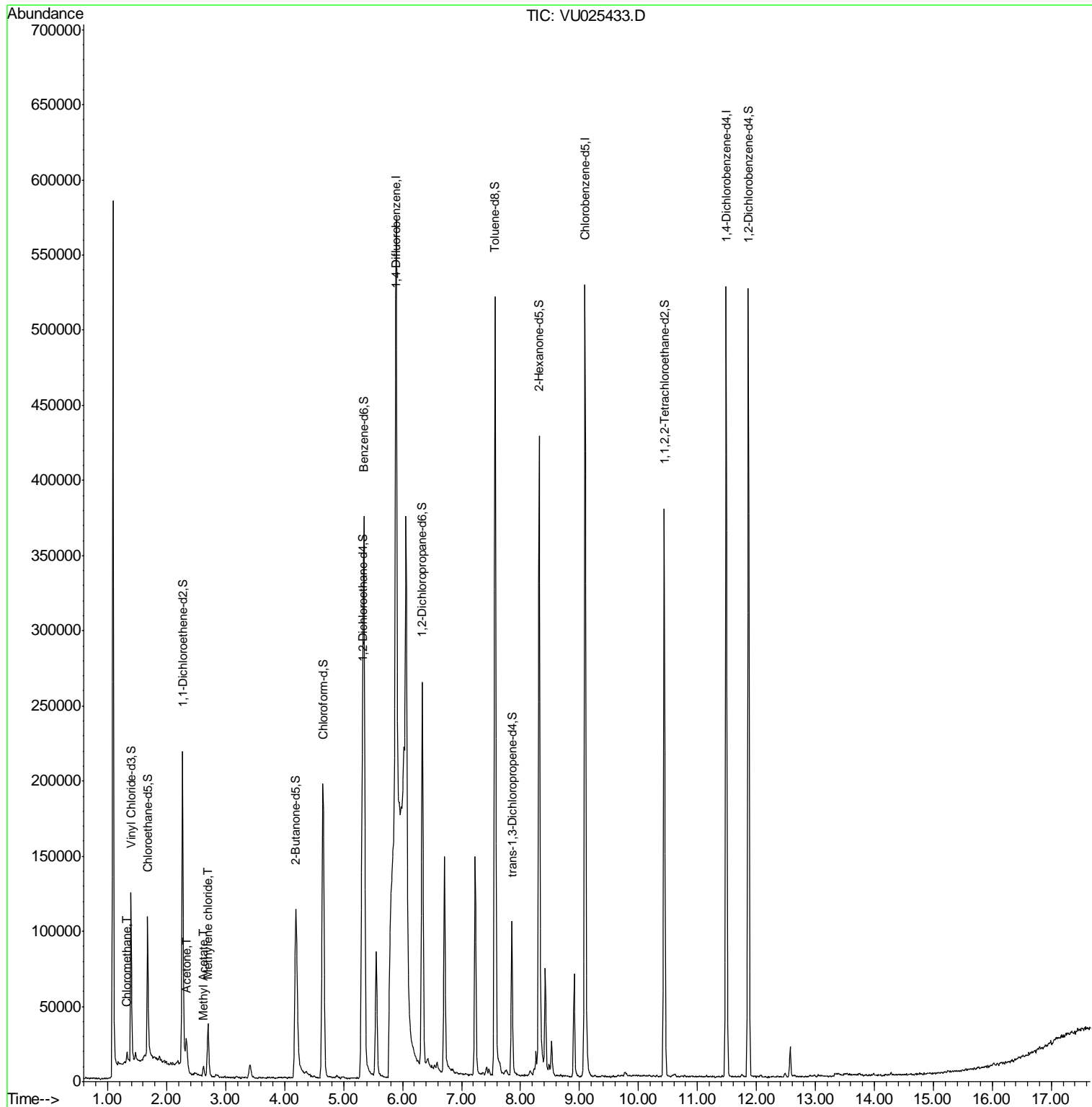
Target Compounds	R.T.	QIon	Response	Conc	Units	Qvalue
3) Chloromethane	1.33	50	4435	1.393	ug/L	100
13) Acetone	2.34	43	19397	9.976	ug/L	98
15) Methyl Acetate	2.63	43	8417	2.912	ug/L	98
16) Methylene chloride	2.70	84	15958	6.182	ug/L	89

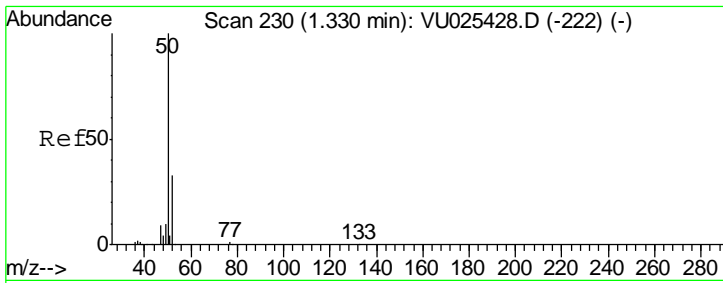
(#) = qualifier out of range (m) = manual integration (+) = signals summed

Data Path : Z:\VOASRV\HPCHEM1\MSVOA_U\DATA\VU071618\
 Data File : VU025433.D
 Acq On : 16 Jul 2018 18:54
 Operator : MD/SY
 Sample : PB111022ZHE#01
 Misc : 5.0mL/MSVOA_U/WATER
 ALS Vial : 21 Sample Multiplier: 1

Instrument :
 MSVOA_U
 ClientSampled :
 PB111022ZHE#01

Quant Time: Jul 17 03:56:36 2018
 Quant Method : Z:\VOASRV\HPCHEM1\MSVOA_U\METHOD\SOMULM071618WMA.M
 Quant Title : VOC Analysis
 QLast Update : Tue Jul 17 02:54:19 2018
 Response via : Initial Calibration

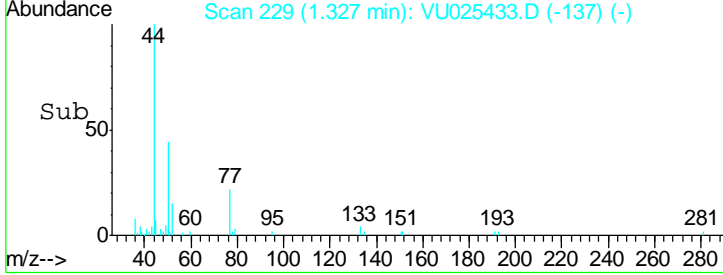
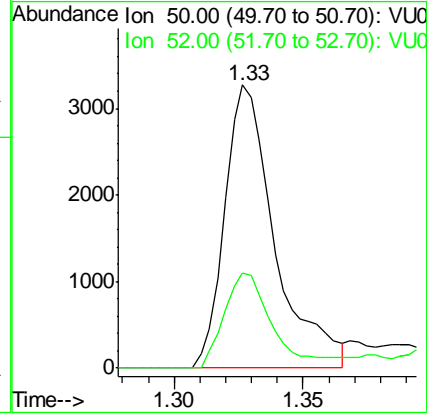
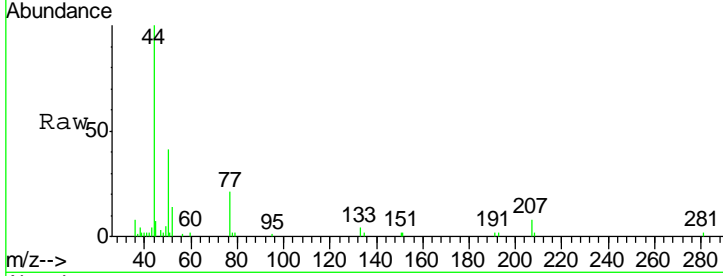




#3
 Chloromethane
 Concen: 1.393 ug/L
 RT: 1.33 min Scan# 229
 Delta R.T. -0.00 min
 Lab File: VU025433.D
 Acq: 16 Jul 2018 18:54

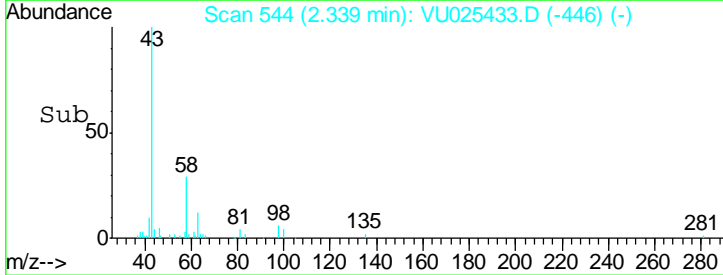
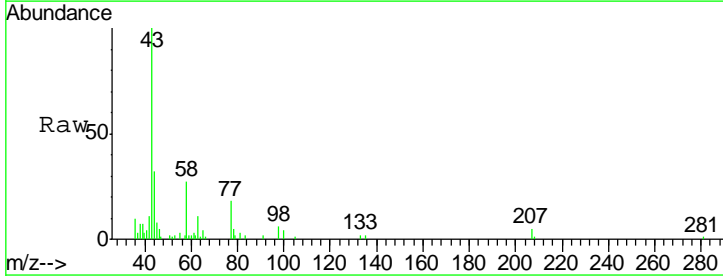
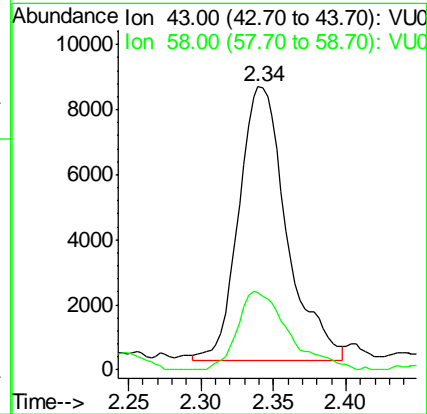
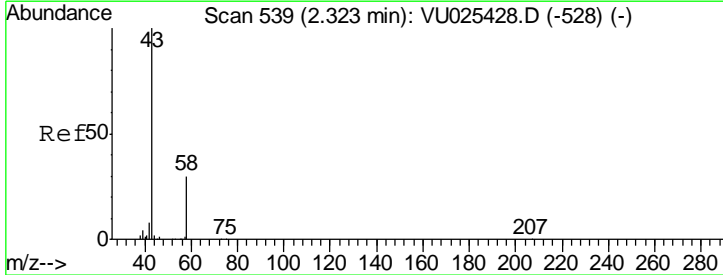
Instrument :
 MSVOA_U
ClientSampled :
 PB111022ZHE#01

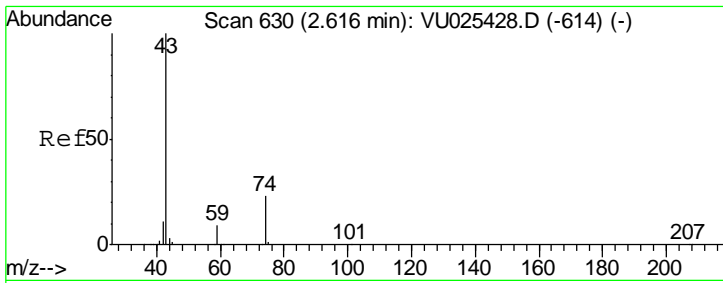
Tgt Ion: 50 Resp: 4435
 Ion Ratio Lower Upper
 50 100
 52 33.7 23.5 43.7



#13
 Acetone
 Concen: 9.976 ug/L
 RT: 2.34 min Scan# 544
 Delta R.T. 0.02 min
 Lab File: VU025433.D
 Acq: 16 Jul 2018 18:54

Tgt Ion: 43 Resp: 19397
 Ion Ratio Lower Upper
 43 100
 58 30.5 0.0 58.4

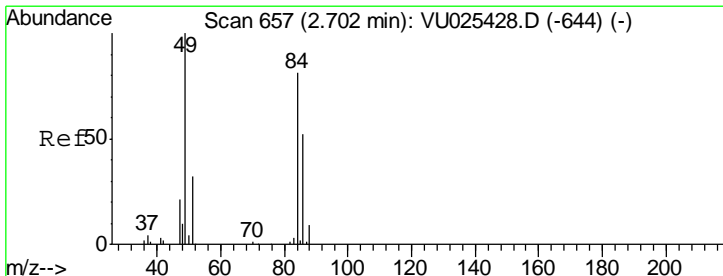
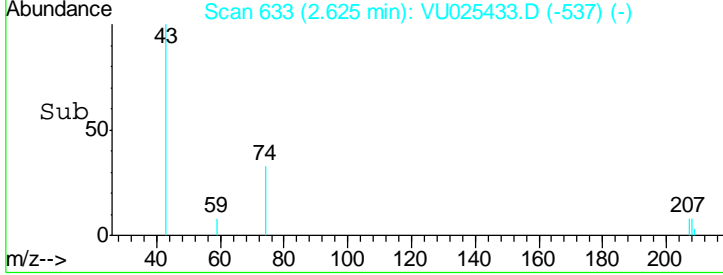
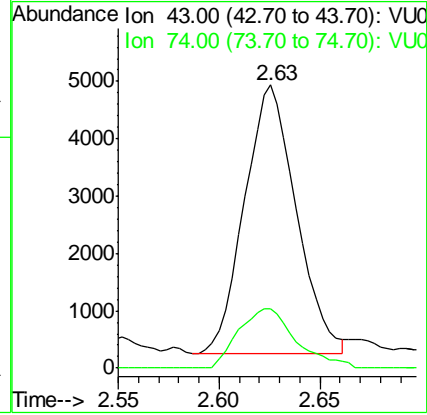
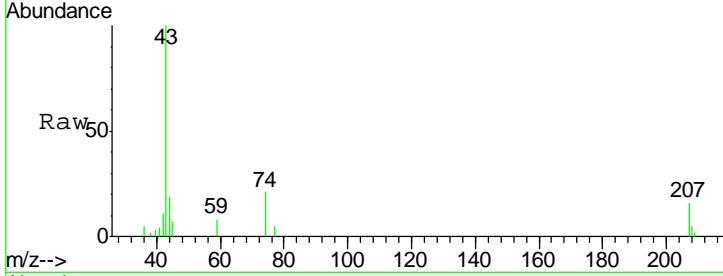




#15
 Methyl Acetate
 Concen: 2.912 ug/L
 RT: 2.63 min Scan# 633
 Delta R.T. 0.01 min
 Lab File: VU025433.D
 Acq: 16 Jul 2018 18:54

Instrument : MSVOA_U
 ClientSampled : PB111022ZHE#01

Tgt Ion	Resp	Lower	Upper
43	100		
74	24.6	18.8	28.2



#16
 Methylene chloride
 Concen: 6.182 ug/L
 RT: 2.70 min Scan# 656
 Delta R.T. -0.00 min
 Lab File: VU025433.D
 Acq: 16 Jul 2018 18:54

Tgt Ion	Resp	Lower	Upper
84	100		
86	65.1	45.2	84.0
49	137.5	83.6	155.2

