

Data Path : Z:\VOASRV\HPCHEM1\MSVOA U\DATA\VU071618\
 Data File : VU025450.D
 Acq On : 17 Jul 2018 01:51
 Operator : MD/SY
 Sample : J3984-16
 Misc : 5.0mL/MSVOA U/WATER
 ALS Vial : 38 Sample Multiplier: 1

Instrument :
 MSVOA_U
 ClientSampleId :
 DB1A5

Integration Parameters: LSCINT.P

Integrator: RTE
 Smoothing : OFF
 Sampling : 1
 Start Thrs: 0.2
 Stop Thrs : 0

Filtering: 5
 Min Area: 0 % of largest Peak
 Max Peaks: 100
 Peak Location: TOP

If leading or trailing edge < 100 prefer < Baseline drop else tangent >
 Peak separation: 5

Method : Z:\VOASRV\HPCHEM1\MSVOA_U\METHOD\SOMULM071618WMA.M
 Title : VOC Analysis

Signal : TIC

peak #	R.T. min	first scan	max scan	last scan	PK TY	peak height	corr. area	corr. % max.	% of total
1	0.629	9	12	16	rBV	634	600	0.02%	0.004%
2	0.699	31	34	37	rVV3	634	434	0.01%	0.003%
3	0.873	82	88	93	rBV4	610	685	0.02%	0.004%
4	1.082	136	153	170	rBV	2328022	2635465	75.86%	15.730%
5	1.159	171	177	186	rVV	33001	28809	0.83%	0.172%
6	1.400	245	252	270	rBV2	313355	363671	10.47%	2.171%
7	1.677	331	338	356	rVB	84712	115447	3.32%	0.689%
8	2.272	513	523	535	rVB2	213304	326359	9.39%	1.948%
9	2.818	691	693	695	rBV3	823	407	0.01%	0.002%
10	2.982	730	744	765	rBV	490844	893043	25.71%	5.330%
11	3.381	866	868	874	rVB3	554	461	0.01%	0.003%
12	3.696	962	966	968	rBV3	606	422	0.01%	0.003%
13	3.748	977	982	985	rBV2	440	496	0.01%	0.003%
14	3.802	997	999	1005	rBV3	460	524	0.02%	0.003%
15	3.841	1005	1011	1014	rBV5	553	441	0.01%	0.003%
16	4.114	1090	1096	1098	rBV3	654	596	0.02%	0.004%
17	4.227	1100	1131	1164	rBV2	1322453	3473924	100.00%	20.735%
18	4.651	1243	1263	1283	rBV	176537	416258	11.98%	2.485%
19	4.834	1316	1320	1324	rBV2	599	593	0.02%	0.004%
20	4.937	1347	1352	1354	rBV3	531	427	0.01%	0.003%
21	4.953	1354	1357	1359	rBV2	592	438	0.01%	0.003%
22	5.027	1377	1380	1383	rBV2	710	457	0.01%	0.003%
23	5.059	1386	1390	1392	rBV3	529	492	0.01%	0.003%
24	5.117	1404	1408	1412	rBV3	437	498	0.01%	0.003%
25	5.342	1450	1478	1500	rBV2	336320	1023100	29.45%	6.107%
26	5.590	1552	1555	1558	rVB3	614	393	0.01%	0.002%
27	5.635	1564	1569	1570	rBV4	749	513	0.01%	0.003%
28	5.751	1600	1605	1607	rVV4	819	805	0.02%	0.005%
29	5.783	1610	1615	1621	rBV3	539	631	0.02%	0.004%
30	5.889	1633	1648	1668	rBV	375329	739610	21.29%	4.415%
31	6.188	1726	1741	1772	rBV	741700	1444114	41.57%	8.620%
32	6.333	1773	1786	1803	rVV	231088	459480	13.23%	2.743%
33	6.561	1852	1857	1863	rVB4	969	1082	0.03%	0.006%
34	6.603	1863	1870	1872	rBV4	871	1073	0.03%	0.006%

Data Path : Z:\VOASRV\HPCHEM1\MSVOA U\DATA\VU071618\
 Data File : VU025450.D
 Acq On : 17 Jul 2018 01:51
 Operator : MD/SY
 Sample : J3984-16
 Misc : 5.0mL/MSVOA U/WATER
 ALS Vial : 38 Sample Multiplier: 1

Instrument :
 MSVOA_U
 ClientSampleId :
 DB1A5

Integration Parameters: LSCINT.P

Integrator: RTE
 Smoothing : OFF
 Sampling : 1
 Start Thrs: 0.2
 Stop Thrs : 0

Filtering: 5
 Min Area: 0 % of largest Peak
 Max Peaks: 100
 Peak Location: TOP

If leading or trailing edge < 100 prefer < Baseline drop else tangent >
 Peak separation: 5

Method : Z:\VOASRV\HPCHEM1\MSVOA_U\METHOD\SOMULM071618WMA.M
 Title : VOC Analysis

35	6.696	1896	1899	1902	rBV2	750	531	0.02%	0.003%
36	6.831	1937	1941	1942	rBV3	769	519	0.01%	0.003%
37	6.956	1978	1980	1984	rBV2	504	417	0.01%	0.002%
38	7.037	2002	2005	2008	rBV3	799	545	0.02%	0.003%
39	7.230	2054	2065	2080	rBV	78297	136581	3.93%	0.815%
40	7.358	2102	2105	2108	rBV3	806	612	0.02%	0.004%
41	7.461	2131	2137	2139	rBV3	553	449	0.01%	0.003%
42	7.567	2156	2170	2191	rBV	462561	818164	23.55%	4.883%
43	7.770	2231	2233	2238	rVB5	593	508	0.01%	0.003%
44	7.850	2247	2258	2275	rBV	56141	97147	2.80%	0.580%
45	8.162	2352	2355	2357	rBV3	575	404	0.01%	0.002%
46	8.178	2357	2360	2362	rVV3	1134	845	0.02%	0.005%
47	8.230	2365	2376	2389	rVV2	92833	159187	4.58%	0.950%
48	8.313	2390	2402	2437	rVB	313736	579545	16.68%	3.459%
49	8.461	2445	2448	2454	rVB5	1010	953	0.03%	0.006%
50	8.493	2454	2458	2461	rVB3	499	440	0.01%	0.003%
51	8.522	2461	2467	2470	rVB6	756	675	0.02%	0.004%
52	8.542	2470	2473	2477	rBV3	597	627	0.02%	0.004%
53	8.702	2520	2523	2530	rBV5	931	968	0.03%	0.006%
54	8.841	2561	2566	2571	rVB6	927	1059	0.03%	0.006%
55	8.889	2579	2581	2585	rBV3	682	406	0.01%	0.002%
56	8.924	2585	2592	2595	rBV3	847	841	0.02%	0.005%
57	9.005	2604	2617	2623	rBV8	1314	2783	0.08%	0.017%
58	9.091	2630	2644	2669	rBV	517693	866564	24.94%	5.172%
59	9.255	2693	2695	2700	rVB4	725	530	0.02%	0.003%
60	9.342	2719	2722	2724	rBV2	692	396	0.01%	0.002%
61	9.368	2727	2730	2731	rBV2	949	472	0.01%	0.003%
62	9.532	2777	2781	2789	rBV4	528	606	0.02%	0.004%
63	9.580	2795	2796	2800	rBV3	587	481	0.01%	0.003%
64	9.641	2813	2815	2819	rVB3	841	629	0.02%	0.004%
65	9.670	2819	2824	2827	rBV3	741	758	0.02%	0.005%
66	9.779	2852	2858	2862	rBV6	1425	1425	0.04%	0.009%
67	9.834	2872	2875	2876	rBV2	917	449	0.01%	0.003%
68	9.972	2915	2918	2921	rVB3	663	459	0.01%	0.003%
69	9.992	2921	2924	2928	rBV4	505	465	0.01%	0.003%
70	10.021	2930	2933	2938	rVV3	687	596	0.02%	0.004%
71	10.056	2938	2944	2949	rVB5	765	917	0.03%	0.005%

Data Path : Z:\VOASRV\HPCHEM1\MSVOA U\DATA\VU071618\
 Data File : VU025450.D
 Acq On : 17 Jul 2018 01:51
 Operator : MD/SY
 Sample : J3984-16
 Misc : 5.0mL/MSVOA U/WATER
 ALS Vial : 38 Sample Multiplier: 1

Instrument :
 MSVOA_U
 ClientSampleId :
 DB1A5

Integration Parameters: LSCINT.P

Integrator: RTE
 Smoothing : OFF
 Sampling : 1
 Start Thrs: 0.2
 Stop Thrs : 0

Filtering: 5
 Min Area: 0 % of largest Peak
 Max Peaks: 100
 Peak Location: TOP

If leading or trailing edge < 100 prefer < Baseline drop else tangent >
 Peak separation: 5

Method : Z:\VOASRV\HPCHEM1\MSVOA_U\METHOD\SOMULM071618WMA.M
 Title : VOC Analysis

72	10.143	2968	2971	2973	rBV3	778	453	0.01%	0.003%
73	10.175	2976	2981	2984	rVB4	399	397	0.01%	0.002%
74	10.307	3011	3022	3033	rBV10	3547	9020	0.26%	0.054%
75	10.435	3050	3062	3079	rVB	338998	541542	15.59%	3.232%
76	10.603	3108	3114	3116	rBV5	2019	1765	0.05%	0.011%
77	10.776	3164	3168	3171	rBV4	532	461	0.01%	0.003%
78	10.866	3194	3196	3200	rVB3	678	444	0.01%	0.003%
79	10.892	3200	3204	3206	rBV3	621	517	0.01%	0.003%
80	10.908	3206	3209	3213	rVB3	710	415	0.01%	0.002%
81	10.972	3220	3229	3241	rBV5	7438	16139	0.46%	0.096%
82	11.066	3256	3258	3261	rVB	1200	606	0.02%	0.004%
83	11.117	3271	3274	3279	rVB5	1201	1089	0.03%	0.006%
84	11.152	3279	3285	3287	rBV3	675	730	0.02%	0.004%
85	11.188	3294	3296	3302	rVB6	589	553	0.02%	0.003%
86	11.336	3339	3342	3347	rBV4	629	636	0.02%	0.004%
87	11.368	3347	3352	3358	rVB3	1161	1351	0.04%	0.008%
88	11.406	3358	3364	3367	rBV5	902	1056	0.03%	0.006%
89	11.487	3375	3389	3408	rBV	501979	787667	22.67%	4.701%
90	11.712	3454	3459	3462	rVB4	785	582	0.02%	0.003%
91	11.863	3493	3506	3521	rBV	468531	744981	21.44%	4.447%
92	11.985	3538	3544	3553	rBV5	2592	4392	0.13%	0.026%
93	12.075	3565	3572	3577	rBV9	2759	3854	0.11%	0.023%
94	12.284	3634	3637	3640	rBV4	734	595	0.02%	0.004%
95	12.445	3684	3687	3690	rVV3	833	535	0.02%	0.003%
96	12.570	3718	3726	3736	rBV3	14068	20293	0.58%	0.121%
97	12.766	3783	3787	3789	rBV	880	659	0.02%	0.004%
98	13.098	3888	3890	3894	rVB3	1045	615	0.02%	0.004%
99	13.850	4120	4124	4128	rVB4	760	648	0.02%	0.004%
100	13.940	4148	4152	4158	rBV5	984	1185	0.03%	0.007%

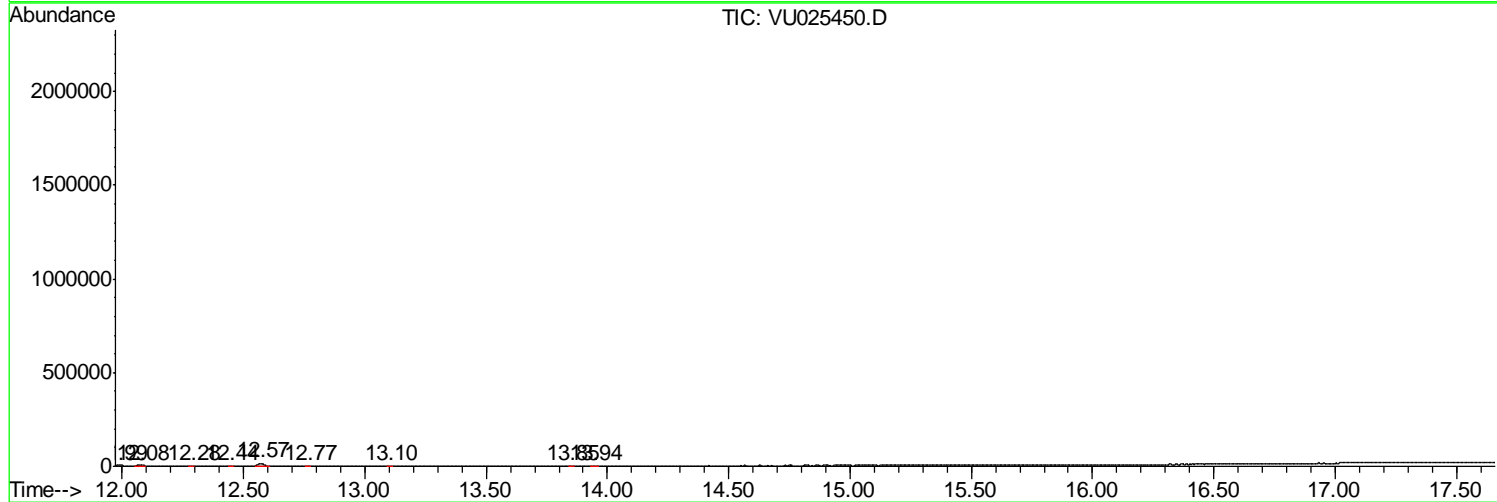
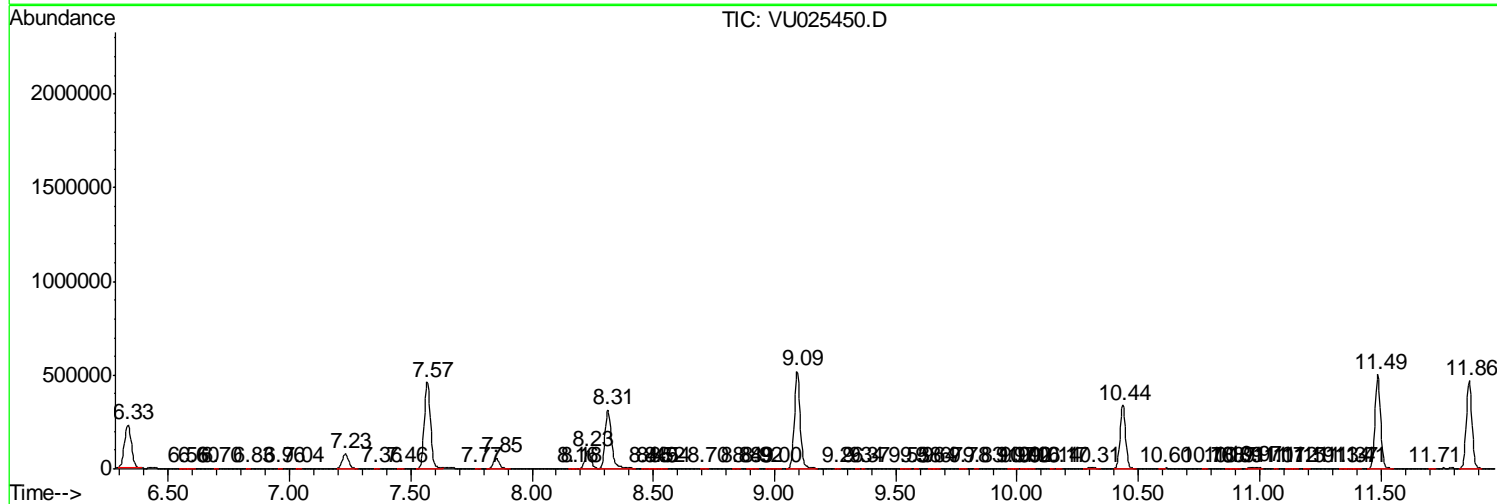
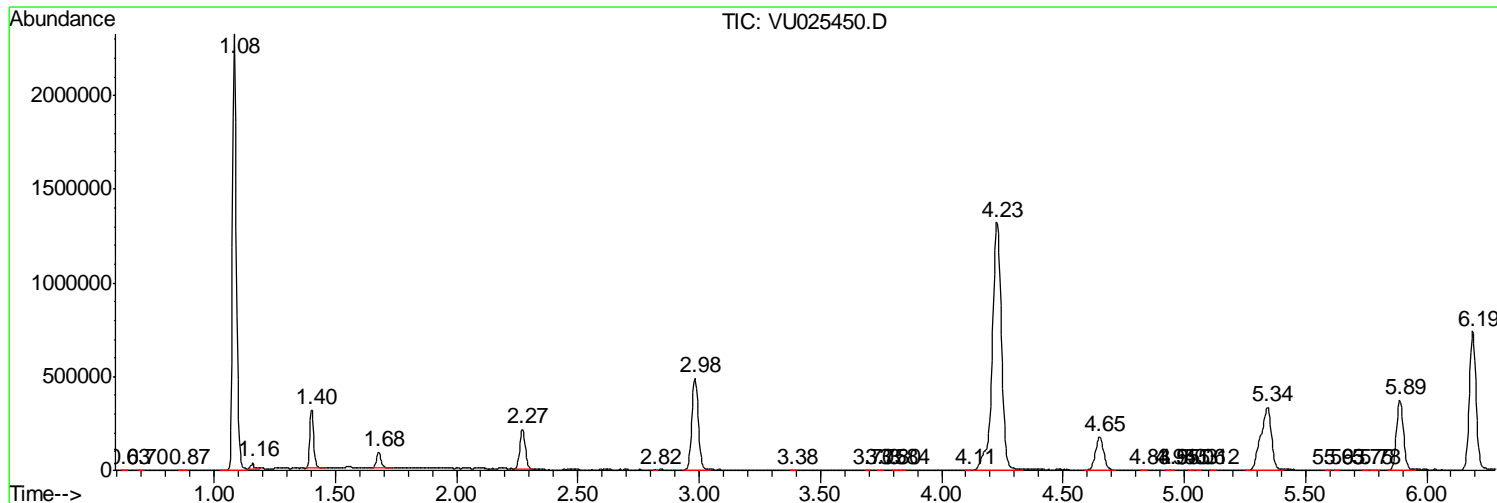
Sum of corrected areas: 16753881

Data Path : Z:\VOASRV\HPCHEM1\MSVOA U\DATA\VU071618\
 Data File : VU025450.D
 Acq On : 17 Jul 2018 01:51
 Operator : MD/SY
 Sample : J3984-16
 Misc : 5.0mL/MSVOA U/WATER
 ALS Vial : 38 Sample Multiplier: 1

Instrument :
 MSVOA_U
ClientSampleId :
 DB1A5

Quant Method : Z:\VOASRV\HPCHEM1\MSVOA_U\METHOD\SOMULM071618WMA.M
 Quant Title : VOC Analysis

TIC Library : C:\DATABASE\NIST11.L
 TIC Integration Parameters: LSCINT.P



Data Path : Z:\VOASRV\HPCHEM1\MSVOA_U\DATA\VU071618\
Data File : VU025450.D
Acq On : 17 Jul 2018 01:51
Operator : MD/SY
Sample : J3984-16
Misc : 5.0mL/MSVOA_U/WATER
ALS Vial : 38 Sample Multiplier: 1

Instrument :
MSVOA_U
ClientSampleId :
DB1A5

Quant Method : Z:\VOASRV\HPCHEM1\MSVOA_U\METHOD\SOMULM071618WMA.M
Quant Title : VOC Analysis

TIC Library : C:\DATABASE\NIST11.L
TIC Integration Parameters: LSCINT.P

No Library Search Compounds Detected

Data Path : Z:\VOASRV\HPCHEM1\MSVOA_U\DATA\VU071618\
Data File : VU025450.D
Acq On : 17 Jul 2018 01:51
Operator : MD/SY
Sample : J3984-16
Misc : 5.0mL/MSVOA_U/WATER
ALS Vial : 38 Sample Multiplier: 1

Instrument :
MSVOA_U
ClientSampleId :
DB1A5

Quant Method : Z:\VOASRV\HPCHEM1\MSVOA_U\METHOD\SOMULM071618WMA.M
Quant Title : VOC Analysis

TIC Library : C:\DATABASE\NIST11.L
TIC Integration Parameters: LSCINT.P

TIC Top Hit name	RT	EstConc	Units	Response	--Internal Standard--			
					#	RT	Resp	Conc
