

Data Path : Z:\voasrv\HPCHEM1\MSVOA_U\Data\VU071624\
 Data File : VU059967.D
 Acq On : 16 Jul 2024 12:15
 Operator : MD/SY
 Sample : P3217-19 50X
 Misc : 25.0mL/MSVOA_U/WATER
 ALS Vial : 7 Sample Multiplier: 1

Instrument :
 MSVOA_U
 ClientSampleId :

Quant Time: Jul 17 02:27:24 2024
 Quant Method : Z:\voasrv\HPCHEM1\MSVOA_U\Method\SFAMUTR061724WMA.M
 Quant Title : TRACE VOA SFAM1.0
 QLast Update : Wed Jul 17 02:25:31 2024
 Response via : Initial Calibration

Compound	R.T.	QIon	Response	Conc	Units	Dev(Min)

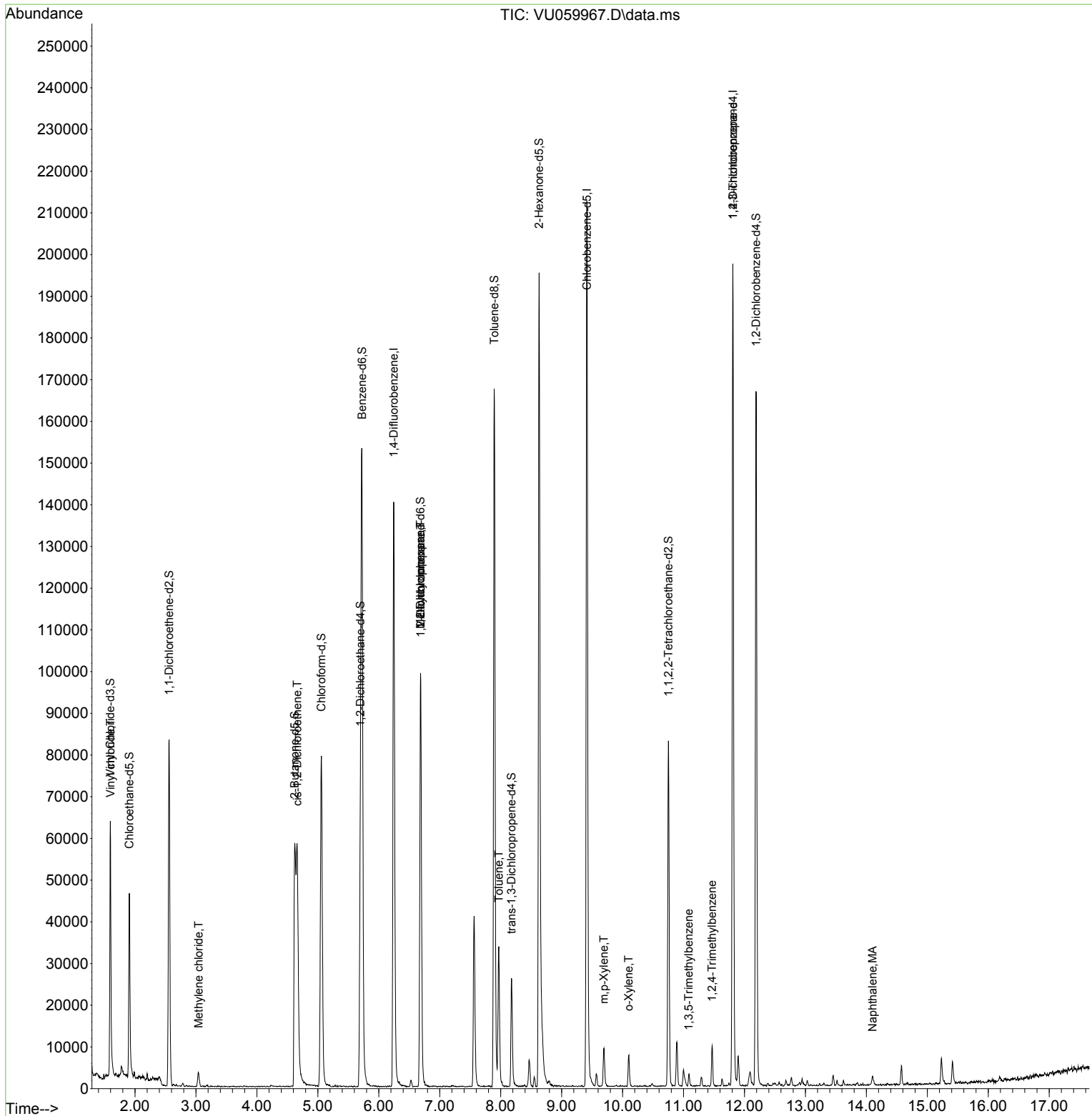
Internal Standards						
1) 1,4-Difluorobenzene	6.245	114	119562	5.000	ug/L	0.00
28) Chlorobenzene-d5	9.415	117	130967	5.000	ug/L	0.00
58) 1,4-Dichlorobenzene-d4	11.810	152	57135	5.000	ug/L	0.00
System Monitoring Compounds						
4) Vinyl Chloride-d3	1.595	65	42096	5.063	ug/L	0.00
Spiked Amount	5.000	Range 40 - 130	Recovery	=	101.200%	
7) Chloroethane-d5	1.907	69	36345	4.543	ug/L	0.00
Spiked Amount	5.000	Range 65 - 130	Recovery	=	90.800%	
11) 1,1-Dichloroethene-d2	2.560	65	15505	4.495	ug/L	0.00
Spiked Amount	5.000	Range 60 - 125	Recovery	=	90.000%	
20) 2-Butanone-d5	4.621	46	83889	48.986	ug/L	0.00
Spiked Amount	50.000	Range 40 - 130	Recovery	=	97.980%	
24) Chloroform-d	5.058	84	77927	4.567	ug/L	0.00
Spiked Amount	5.000	Range 70 - 125	Recovery	=	91.400%	
26) 1,2-Dichloroethane-d4	5.698	65	40457	4.922	ug/L	0.00
Spiked Amount	5.000	Range 70 - 130	Recovery	=	98.400%	
32) Benzene-d6	5.724	84	151440	4.201	ug/L	0.00
Spiked Amount	5.000	Range 70 - 125	Recovery	=	84.000%	
36) 1,2-Dichloropropane-d6	6.685	67	50807	4.600	ug/L	0.00
Spiked Amount	5.000	Range 60 - 140	Recovery	=	92.000%	
41) Toluene-d8	7.894	98	120576	3.598	ug/L	0.00
Spiked Amount	5.000	Range 70 - 130	Recovery	=	72.000%	
43) trans-1,3-Dichloroprop...	8.177	79	16351	4.728	ug/L	0.00
Spiked Amount	5.000	Range 55 - 130	Recovery	=	94.600%	
46) 2-Hexanone-d5	8.631	63	64730	45.045	ug/L	0.00
Spiked Amount	50.000	Range 45 - 130	Recovery	=	90.080%	
56) 1,1,2,2-Tetrachloroeth...	10.753	84	44185	4.842	ug/L	0.00
Spiked Amount	5.000	Range 65 - 120	Recovery	=	96.800%	
66) 1,2-Dichlorobenzene-d4	12.190	152	49554	4.873	ug/L	0.00
Spiked Amount	5.000	Range 80 - 120	Recovery	=	97.400%	
Target Compounds						
						Qvalue
5) Vinyl chloride	1.599	62	8523	0.708	ug/L #	80
16) Methylene chloride	3.042	84	1838	0.183	ug/L	89
22) cis-1,2-Dichloroethene	4.663	96	26622	2.739	ug/L	92
35) Methylcyclohexane	6.685	83	11346	0.740	ug/L #	18
37) 1,2-Dichloropropane	6.689	63	4994	0.485	ug/L #	90
42) Toluene	7.968	91	25744	0.611	ug/L	95
53) m,p-Xylene	9.695	106	3240	0.195	ug/L	69
54) o-Xylene	10.100	106	2113	0.134	ug/L	92
61) 1,2,3-Trichloropropane	11.810	75	6321	1.197	ug/L #	70
62) 1,3,5-Trimethylbenzene	11.087	105	2165	0.077	ug/L	92
63) 1,2,4-Trimethylbenzene	11.470	105	5556	0.208	ug/L	100
71) Naphthalene	14.103	128	3347	0.229	ug/L #	92

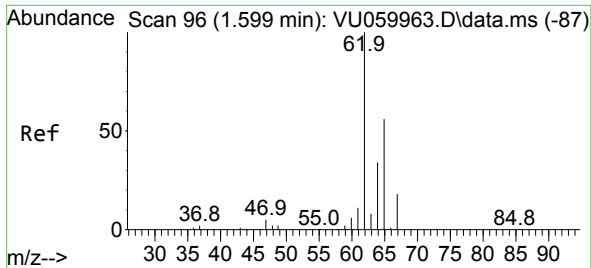
(#) = qualifier out of range (m) = manual integration (+) = signals summed

Data Path : Z:\voasrv\HPCHEM1\MSVOA_U\Data\VU071624\
 Data File : VU059967.D
 Acq On : 16 Jul 2024 12:15
 Operator : MD/SY
 Sample : P3217-19 50X
 Misc : 25.0mL/MSVOA_U/WATER
 ALS Vial : 7 Sample Multiplier: 1

Instrument :
 MSVOA_U
 ClientSampleId :

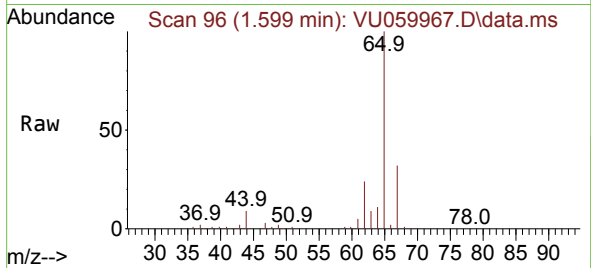
Quant Time: Jul 17 02:27:24 2024
 Quant Method : Z:\voasrv\HPCHEM1\MSVOA_U\Method\SFAMUTR061724WMA.M
 Quant Title : TRACE VOA SFAM1.0
 QLast Update : Wed Jul 17 02:25:31 2024
 Response via : Initial Calibration



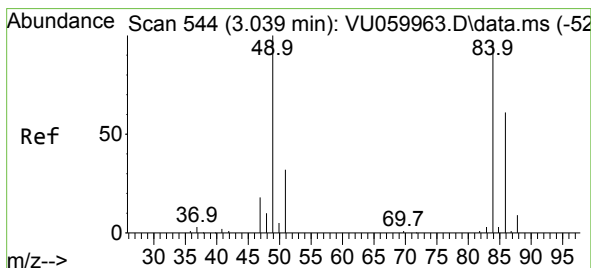
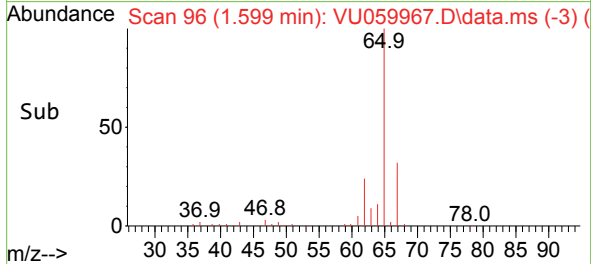
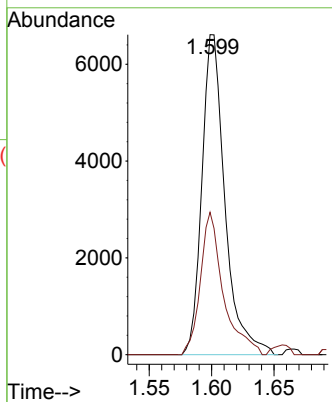


#5
 Vinyl chloride
 Concen: 0.708 ug/L
 RT: 1.599 min Scan# 90
 Delta R.T. 0.000 min
 Lab File: VU059967.D
 Acq: 16 Jul 2024 12:15

Instrument :
 MSVOA_U
 ClientSampleId :

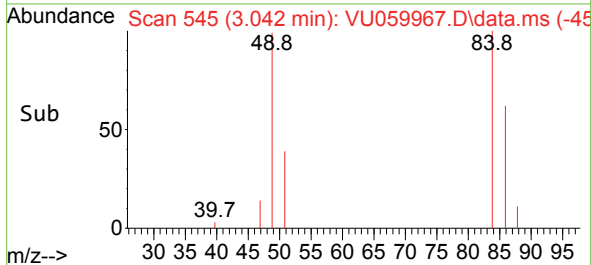
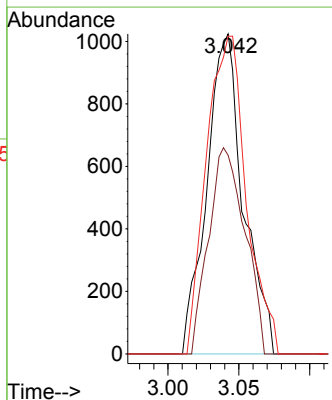
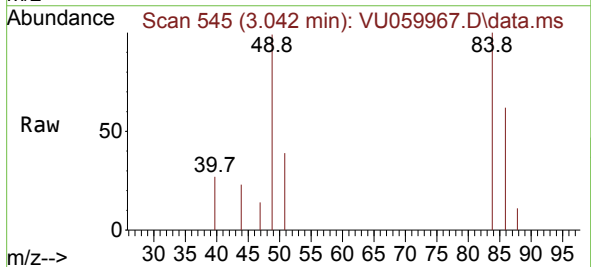


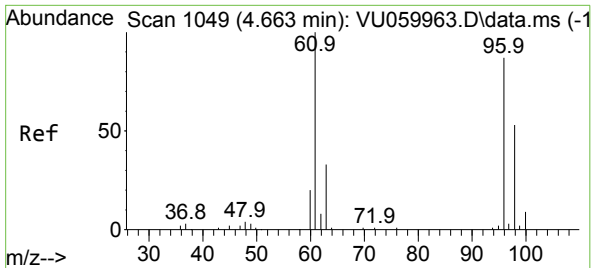
Tgt Ion: 62 Resp: 8523
 Ion Ratio Lower Upper
 62 100
 64 44.5 23.1 42.9#



#16
 Methylene chloride
 Concen: 0.183 ug/L
 RT: 3.042 min Scan# 545
 Delta R.T. 0.003 min
 Lab File: VU059967.D
 Acq: 16 Jul 2024 12:15

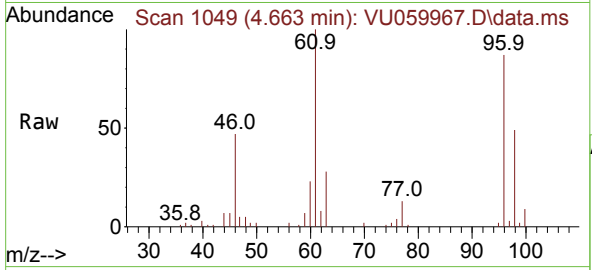
Tgt Ion: 84 Resp: 1838
 Ion Ratio Lower Upper
 84 100
 86 62.1 42.1 78.1
 49 99.3 80.6 149.8





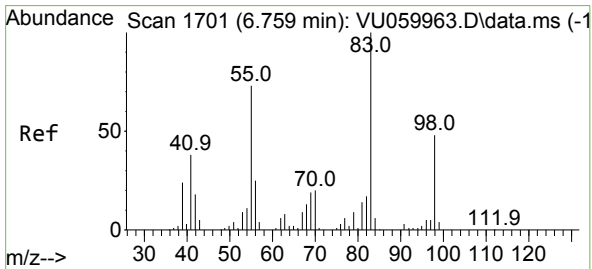
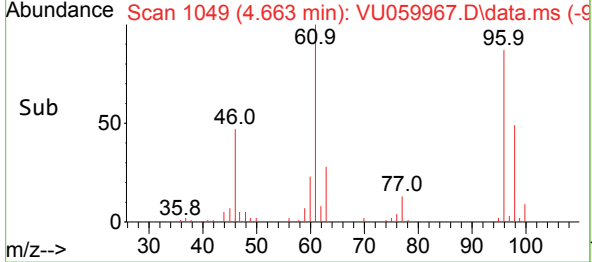
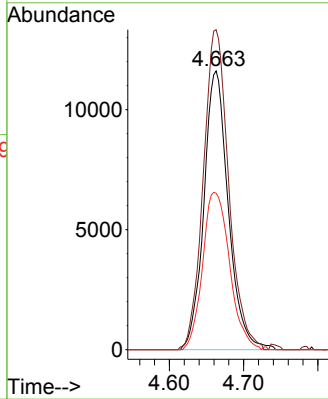
#22
 cis-1,2-Dichloroethene
 Concen: 2.739 ug/L
 RT: 4.663 min Scan# 1049
 Delta R.T. 0.000 min
 Lab File: VU059967.D
 Acq: 16 Jul 2024 12:15

Instrument : MSVOA_U
 ClientSampleId :



Tgt Ion: 96 Resp: 26622

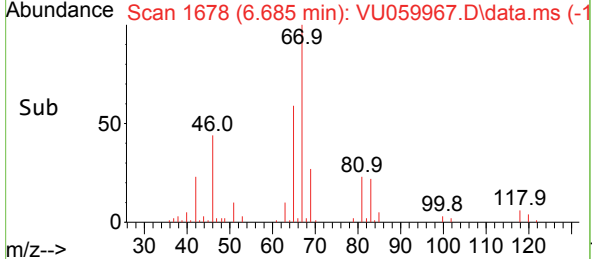
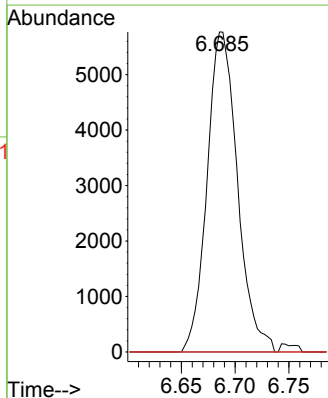
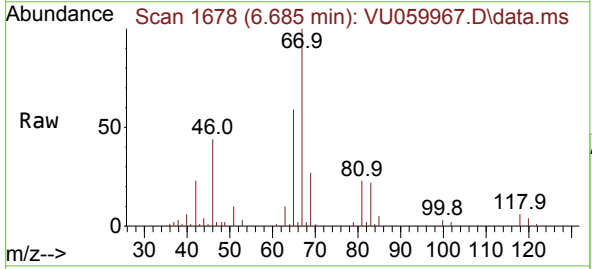
Ion	Ratio	Lower	Upper
96	100		
61	114.8	87.4	162.2
98	56.1	42.3	78.5

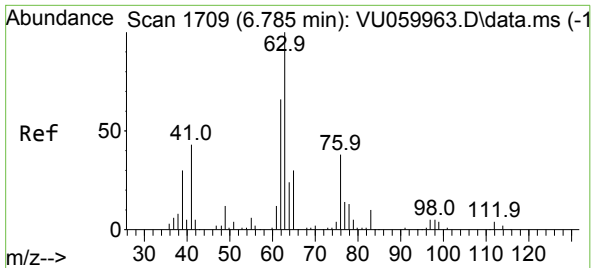


#35
 Methylcyclohexane
 Concen: 0.740 ug/L
 RT: 6.685 min Scan# 1678
 Delta R.T. -0.074 min
 Lab File: VU059967.D
 Acq: 16 Jul 2024 12:15

Tgt Ion: 83 Resp: 11346

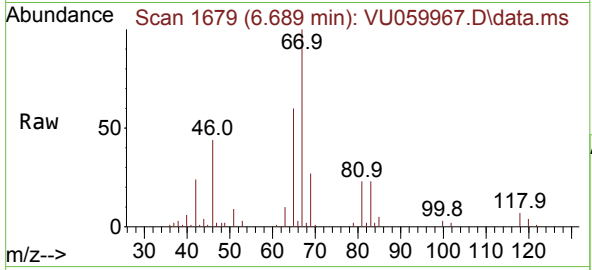
Ion	Ratio	Lower	Upper
83	100		
55	0.0	62.7	94.1#
98	0.6	35.4	53.0#



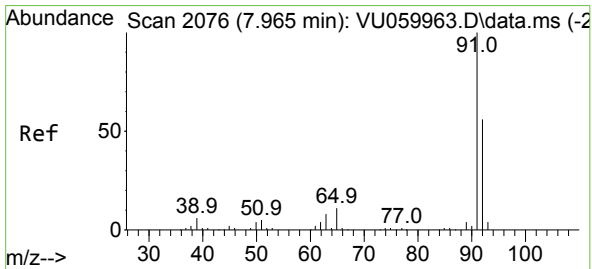
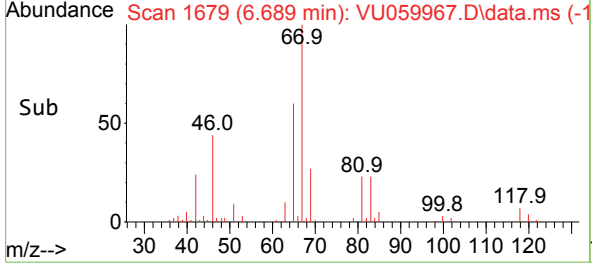
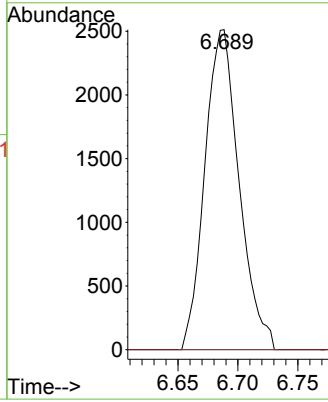


#37
 1,2-Dichloropropane
 Concen: 0.485 ug/L
 RT: 6.689 min Scan# 10
 Delta R.T. -0.096 min
 Lab File: VU059967.D
 Acq: 16 Jul 2024 12:15

Instrument : MSVOA_U
 ClientSampled :

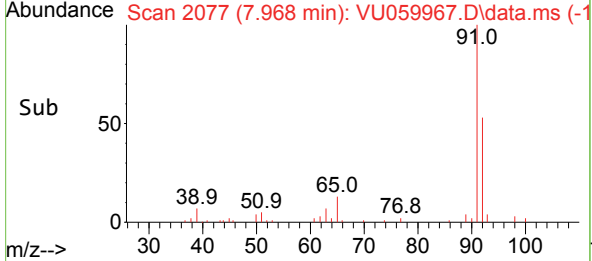
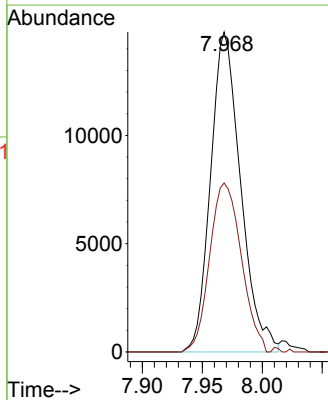
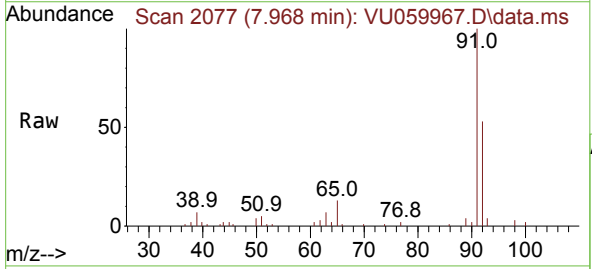


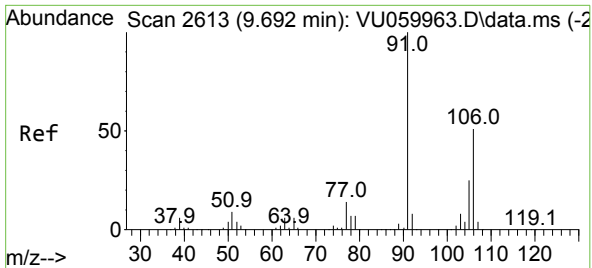
Tgt Ion: 63 Resp: 4994
 Ion Ratio Lower Upper
 63 100
 112 0.0 2.6 3.8#



#42
 Toluene
 Concen: 0.611 ug/L
 RT: 7.968 min Scan# 2077
 Delta R.T. 0.003 min
 Lab File: VU059967.D
 Acq: 16 Jul 2024 12:15

Tgt Ion: 91 Resp: 25744
 Ion Ratio Lower Upper
 91 100
 92 52.8 39.7 73.7

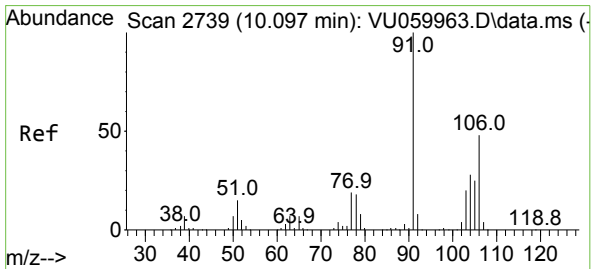
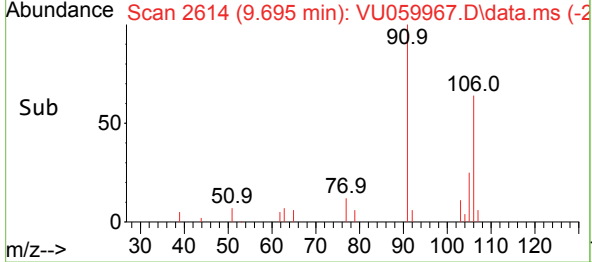
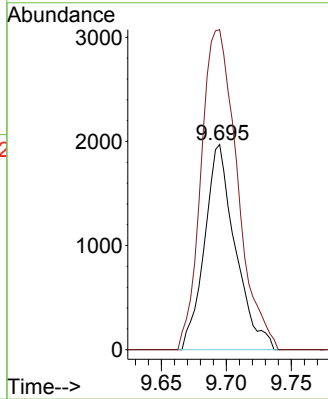
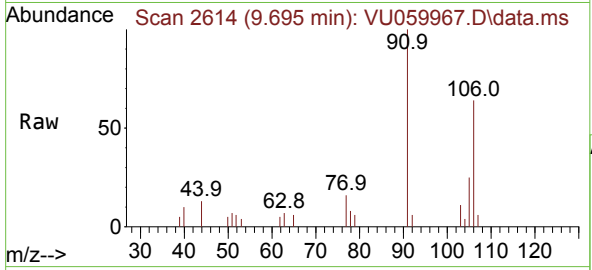




#53
 m,p-Xylene
 Concen: 0.195 ug/L
 RT: 9.695 min Scan# 21
 Delta R.T. 0.003 min
 Lab File: VU059967.D
 Acq: 16 Jul 2024 12:15

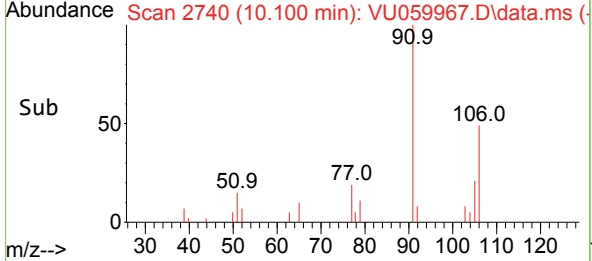
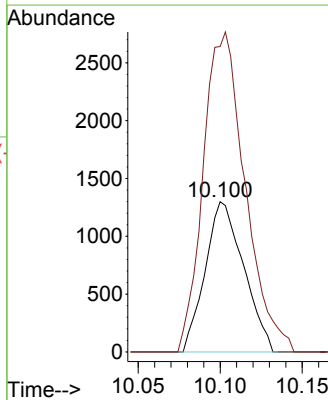
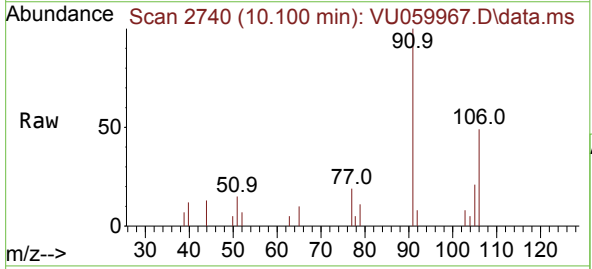
Instrument :
 MSVOA_U
 ClientSampleId :

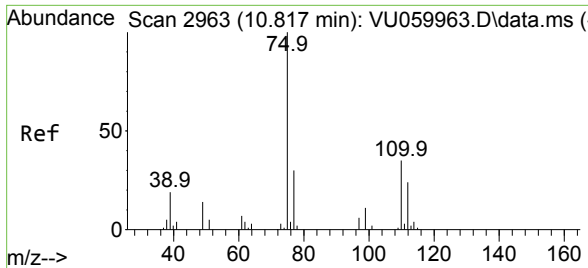
Tgt Ion:106 Resp: 3240
 Ion Ratio Lower Upper
 106 100
 91 155.9 142.0 263.8



#54
 o-Xylene
 Concen: 0.134 ug/L
 RT: 10.100 min Scan# 2740
 Delta R.T. 0.003 min
 Lab File: VU059967.D
 Acq: 16 Jul 2024 12:15

Tgt Ion:106 Resp: 2113
 Ion Ratio Lower Upper
 106 100
 91 203.3 151.6 281.6



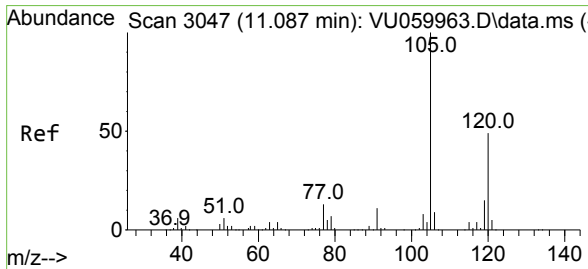
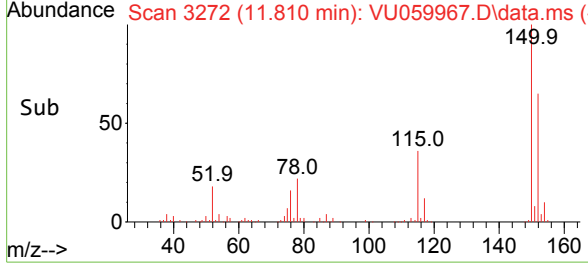
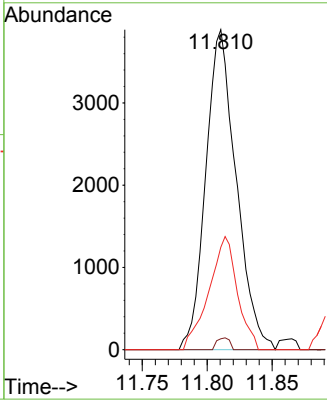
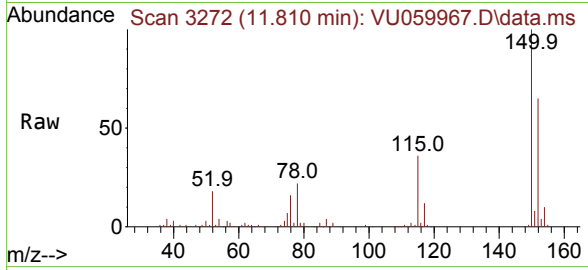


#61
 1,2,3-Trichloropropane
 Concen: 1.197 ug/L
 RT: 11.810 min Scan# 311
 Delta R.T. 0.994 min
 Lab File: VU059967.D
 Acq: 16 Jul 2024 12:15

Instrument : MSVOA_U
 ClientSampleId :

Tgt Ion: 75 Resp: 6321

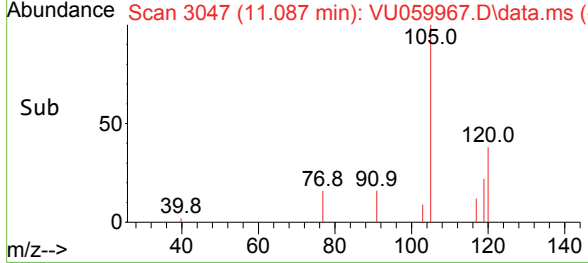
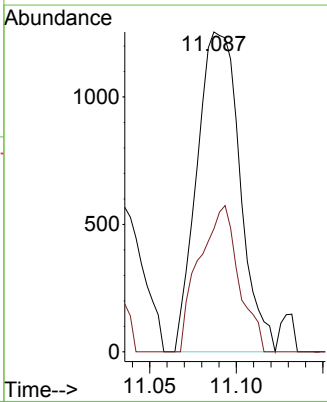
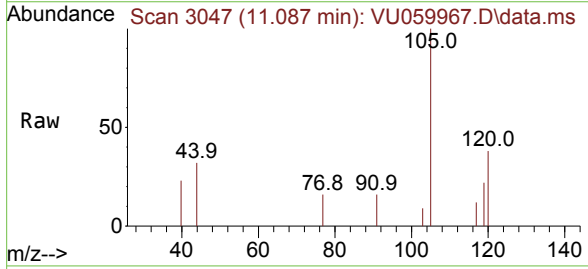
Ion	Ratio	Lower	Upper
75	100		
110	1.5	27.1	40.7#
77	33.2	25.4	38.2

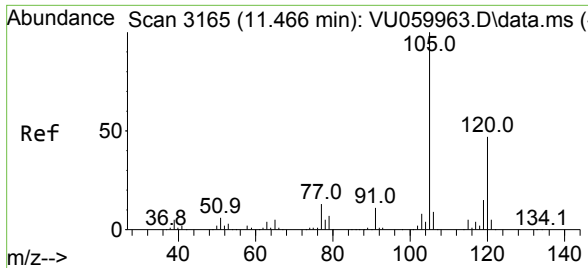


#62
 1,3,5-Trimethylbenzene
 Concen: 0.077 ug/L
 RT: 11.087 min Scan# 3047
 Delta R.T. 0.000 min
 Lab File: VU059967.D
 Acq: 16 Jul 2024 12:15

Tgt Ion: 105 Resp: 2165

Ion	Ratio	Lower	Upper
105	100		
120	42.2	38.2	57.4

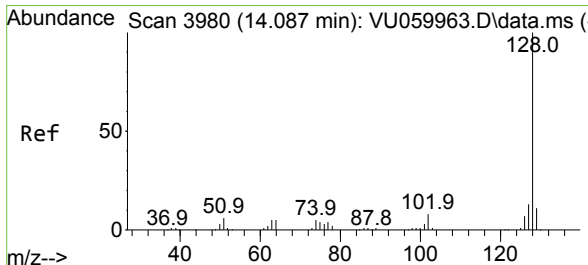
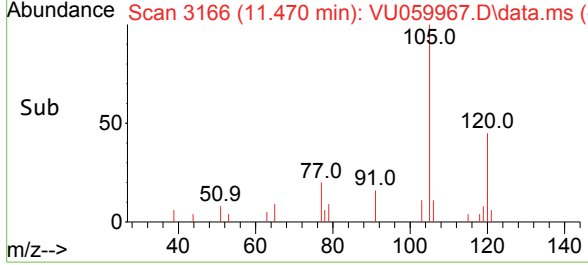
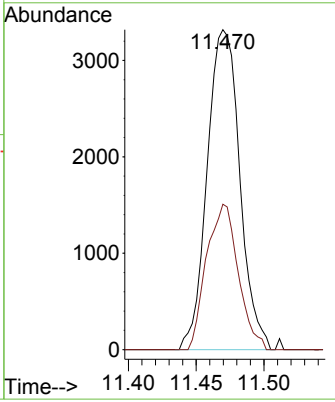
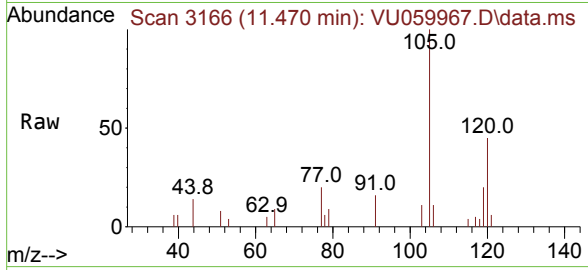




#63
 1,2,4-Trimethylbenzene
 Concen: 0.208 ug/L
 RT: 11.470 min Scan# 3166
 Delta R.T. 0.003 min
 Lab File: VU059967.D
 Acq: 16 Jul 2024 12:15

Instrument : MSVOA_U
 ClientSampleId :

Tgt Ion:105 Resp: 5556
 Ion Ratio Lower Upper
 105 100
 120 44.1 35.4 53.0



#71
 Naphthalene
 Concen: 0.229 ug/L
 RT: 14.103 min Scan# 3985
 Delta R.T. 0.016 min
 Lab File: VU059967.D
 Acq: 16 Jul 2024 12:15

Tgt Ion:128 Resp: 3347
 Ion Ratio Lower Upper
 128 100
 129 4.4 8.2 12.4#
 127 12.2 10.2 15.4

