

Data File : VU033281.D
 Acq On : 17 Jul 2019 10:49
 Operator : JC/SP
 Sample : K3772-15
 Misc : 25.0mL/MSVOA_U/WATER
 ALS Vial : 6 Sample Multiplier: 1

Instrument :
 MSVOA_U
 ClientSampled :
 A52R8

Quant Time: Jul 18 08:04:34 2019
 Quant Method : Z:\VOASRV\HPCHEM1\MSVOA_U\METHOD\SOMUTR071619WMA.M
 Quant Title : TRACE VOA SOM01.0
 QLast Update : Thu Jul 18 08:01:21 2019
 Response via : Initial Calibration

Internal Standards	R.T.	QIon	Response	Conc	Units	Dev(Min)
1) 1,4-Difluorobenzene	5.86	114	127029	5.00	ug/L	0.00
28) Chlorobenzene-d5	9.07	117	135775	5.00	ug/L	0.00
60) 1,4-Dichlorobenzene-d4	11.47	152	56271	5.00	ug/L	0.00

System Monitoring Compounds

4) Vinyl Chloride-d3	1.39	65	48222	3.77	ug/L	0.00
Spiked Amount	5.000	Range	40 - 130	Recovery	=	75.40%
7) Chloroethane-d5	1.67	69	44339	4.16	ug/L	0.00
Spiked Amount	5.000	Range	65 - 130	Recovery	=	83.20%
11) 1,1-Dichloroethene-d2	2.26	63	79822	3.23	ug/L	0.00
Spiked Amount	5.000	Range	60 - 125	Recovery	=	64.60%
20) 2-Butanone-d5	4.17	46	72052	29.89	ug/L	0.00
Spiked Amount	50.000	Range	40 - 130	Recovery	=	59.78%
24) Chloroform-d	4.62	84	72475	3.84	ug/L	0.00
Spiked Amount	5.000	Range	70 - 125	Recovery	=	76.80%
26) 1,2-Dichloroethane-d4	5.29	65	44370	4.35	ug/L	0.00
Spiked Amount	5.000	Range	70 - 130	Recovery	=	87.00%
32) Benzene-d6	5.32	84	158908	4.20	ug/L	0.00
Spiked Amount	5.000	Range	70 - 125	Recovery	=	84.00%
36) 1,2-Dichloropropane-d6	6.31	67	52351	4.35	ug/L	0.00
Spiked Amount	5.000	Range	60 - 140	Recovery	=	87.00%
41) Toluene-d8	7.55	98	138395	3.87	ug/L	0.00
Spiked Amount	5.000	Range	70 - 130	Recovery	=	77.40%
43) trans-1,3-Dichloropropene-	7.83	79	19998	4.15	ug/L	0.00
Spiked Amount	5.000	Range	55 - 130	Recovery	=	83.00%
46) 2-Hexanone-d5	8.30	63	73364	37.04	ug/L	0.00
Spiked Amount	50.000	Range	45 - 130	Recovery	=	74.08%
57) 1,1,2,2-Tetrachloroethane-	10.42	84	43529	4.35	ug/L	0.00
Spiked Amount	5.000	Range	65 - 120	Recovery	=	87.00%
64) 1,2-Dichlorobenzene-d4	11.85	152	53148	4.85	ug/L	0.00
Spiked Amount	5.000	Range	80 - 120	Recovery	=	97.00%

Target Compounds

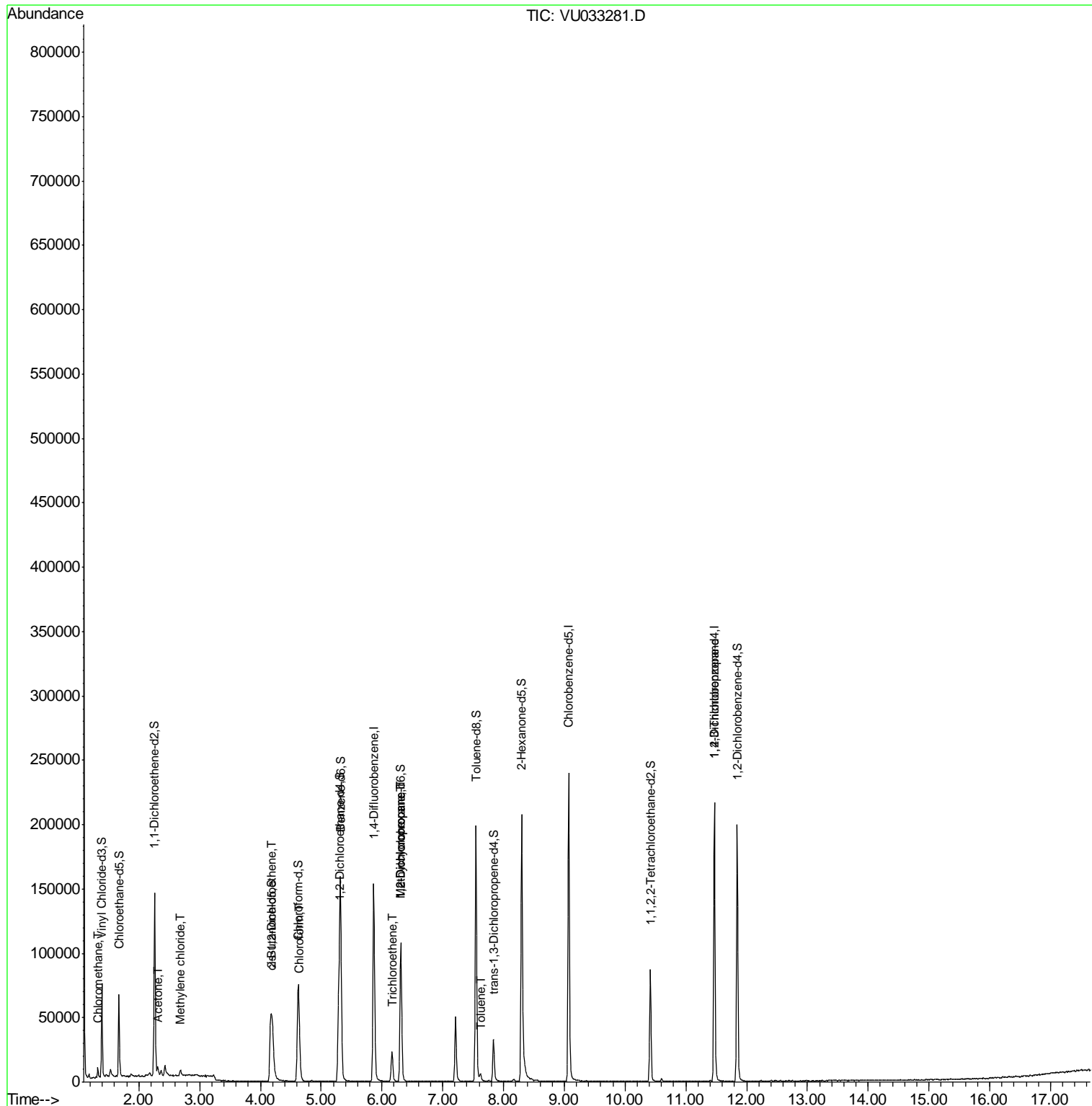
						Qvalue
3) Chloromethane	1.32	50	5223	0.410	ug/L	90
13) Acetone	2.31	43	5552	2.630	ug/L	97
16) Methylene chloride	2.68	84	1675	0.132	ug/L	83
22) cis-1,2-Dichloroethene	4.20	96	12765	1.310	ug/L	97
25) Chloroform	4.65	83	10624	0.554	ug/L	95
34) Trichloroethene	6.17	95	8482	0.834	ug/L	97
35) Methylcyclohexane	6.31	83	12045	0.786	ug/L #	18
37) 1,2-Dichloropropane	6.31	63	5985	0.576	ug/L #	89
42) Toluene	7.62	91	4131	0.100	ug/L	85
59) 1,2,3-Trichloropropane	11.47	75	7025	1.036	ug/L	94

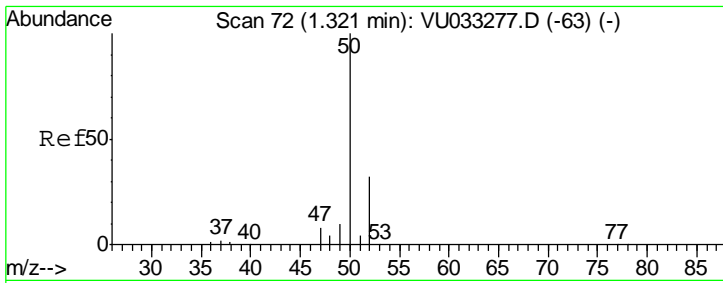
(#) = qualifier out of range (m) = manual integration (+) = signals summed

Data File : VU033281.D
Acq On : 17 Jul 2019 10:49
Operator : JC/SP
Sample : K3772-15
Misc : 25.0mL/MSVOA_U/WATER
ALS Vial : 6 Sample Multiplier: 1

Instrument :
MSVOA_U
ClientSampled :
A52R8

Quant Time: Jul 18 08:04:34 2019
Quant Method : Z:\VOASRV\HPCHEM1\MSVOA_U\METHOD\SOMUTR071619WMA.M
Quant Title : TRACE VOA SOM01.0
QLast Update : Thu Jul 18 08:01:21 2019
Response via : Initial Calibration

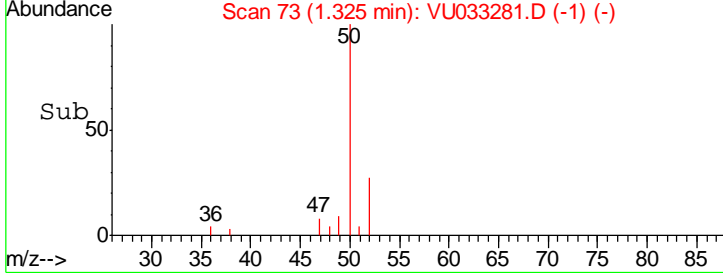
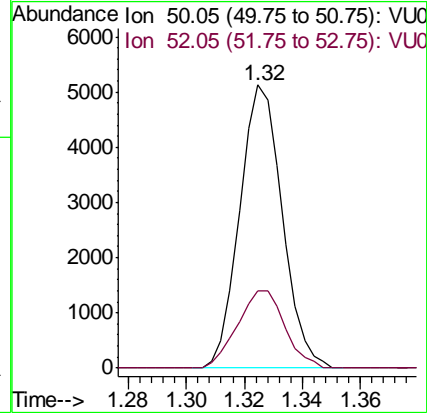
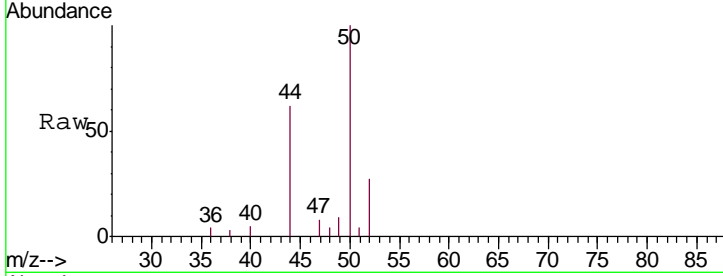




#3
 Chloromethane
 Concen: 0.410 ug/L
 RT: 1.32 min Scan# 73
 Delta R.T. 0.00 min
 Lab File: VU033281.D
 Acq: 17 Jul 2019 10:49

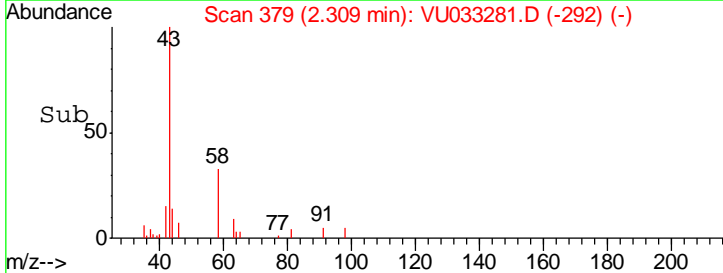
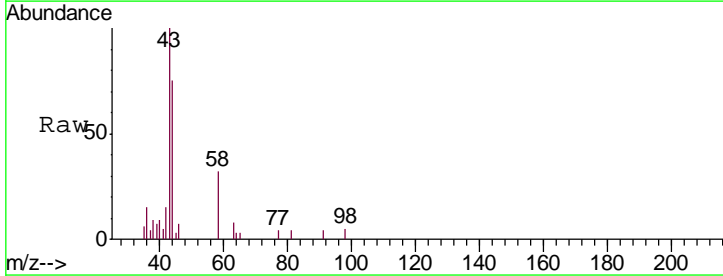
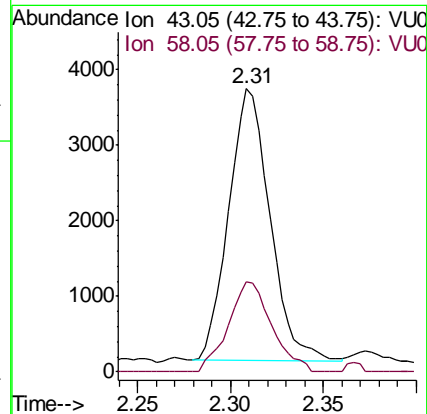
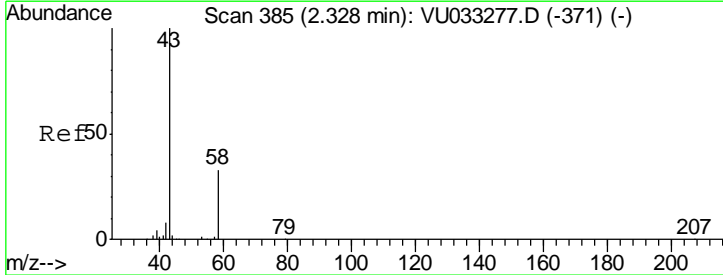
Instrument :
 MSVOA_U
 ClientSampled :
 A52R8

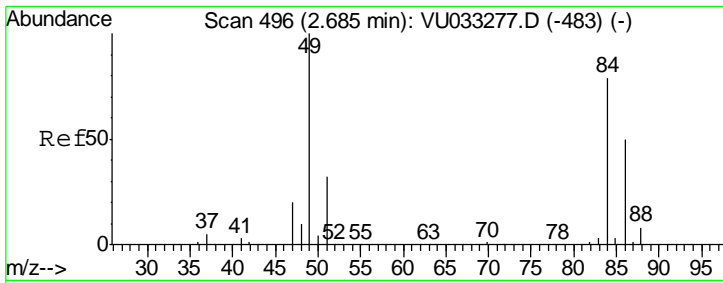
Tgt Ion: 50 Resp: 5223
 Ion Ratio Lower Upper
 50 100
 52 27.5 23.3 43.3



#13
 Acetone
 Concen: 2.630 ug/L
 RT: 2.31 min Scan# 379
 Delta R.T. -0.02 min
 Lab File: VU033281.D
 Acq: 17 Jul 2019 10:49

Tgt Ion: 43 Resp: 5552
 Ion Ratio Lower Upper
 43 100
 58 34.9 0.0 66.6

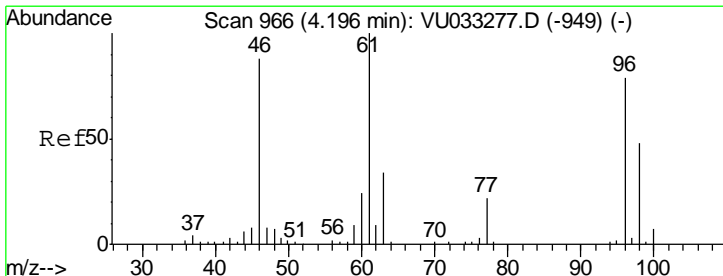
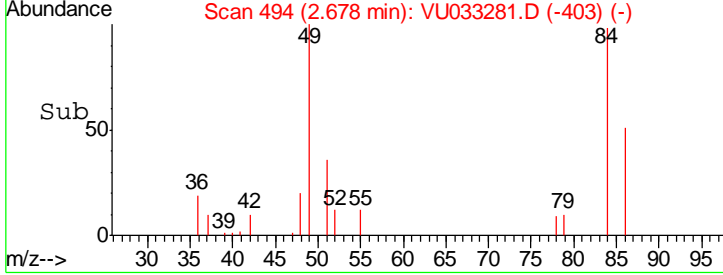
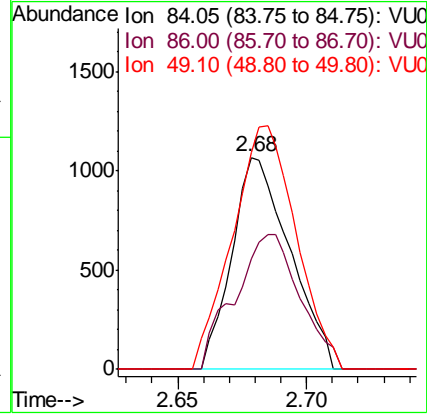
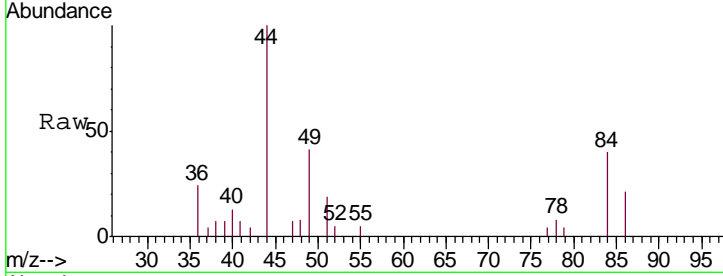




#16
 Methylene chloride
 Concen: 0.132 ug/L
 RT: 2.68 min Scan# 494
 Delta R.T. -0.01 min
 Lab File: VU033281.D
 Acq: 17 Jul 2019 10:49

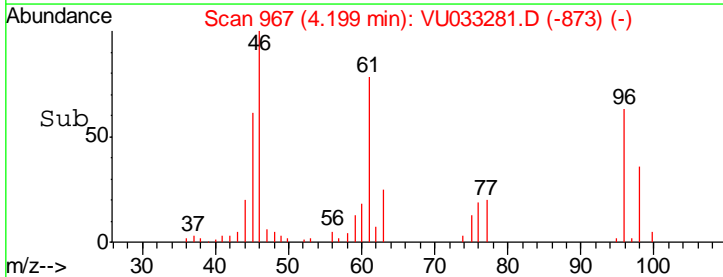
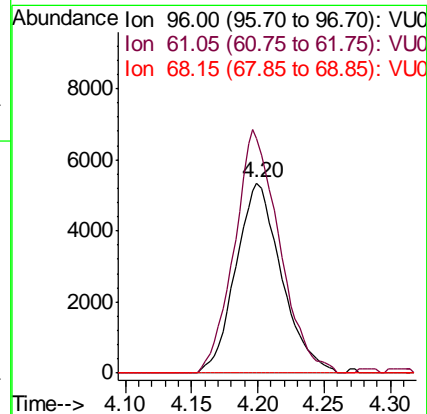
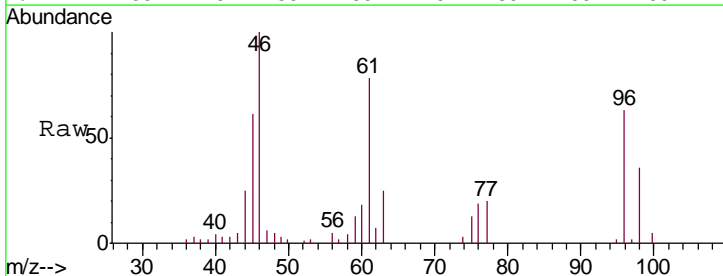
Instrument : MSVOA_U
 ClientSampled : A52R8

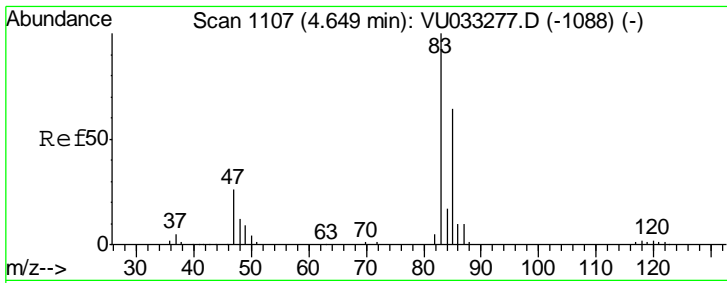
Tgt Ion	Resp	Lower	Upper
84	1675		
84	100		
86	51.9	42.5	78.9
49	102.1	86.9	161.3



#22
 cis-1,2-Dichloroethene
 Concen: 1.310 ug/L
 RT: 4.20 min Scan# 967
 Delta R.T. 0.00 min
 Lab File: VU033281.D
 Acq: 17 Jul 2019 10:49

Tgt Ion	Resp	Lower	Upper
96	12765		
96	100		
61	123.4	89.2	165.6
68	0.0	0.0	0.0

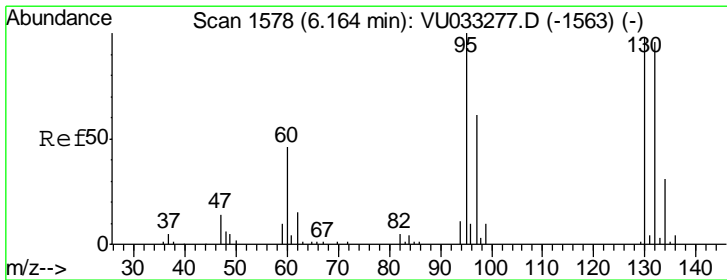
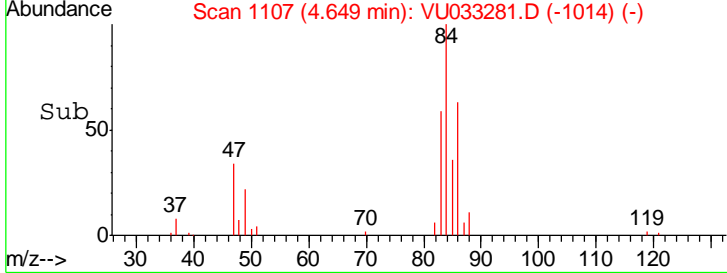
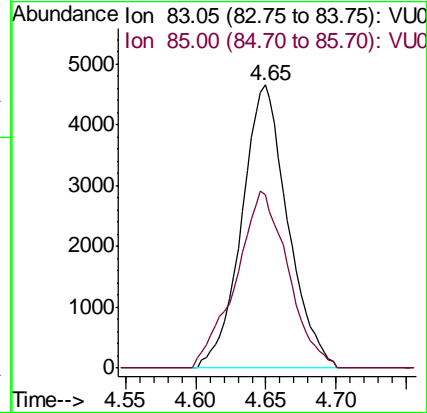
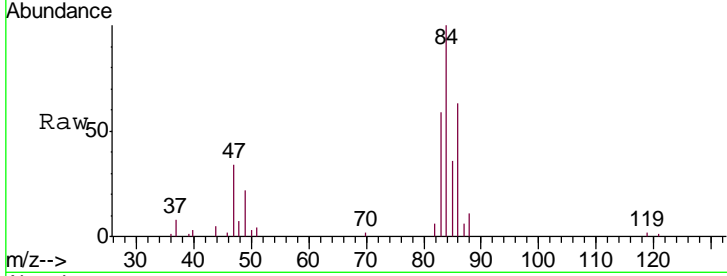




#25
 Chloroform
 Concen: 0.554 ug/L
 RT: 4.65 min Scan# 1107
 Delta R.T. 0.00 min
 Lab File: VU033281.D
 Acq: 17 Jul 2019 10:49

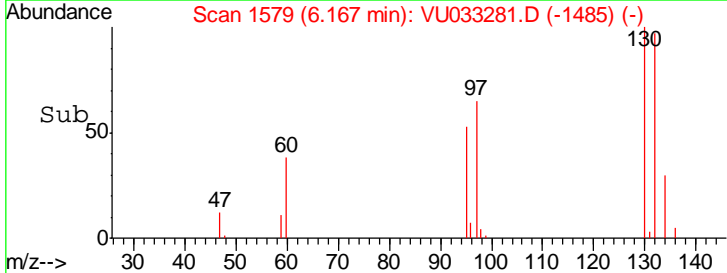
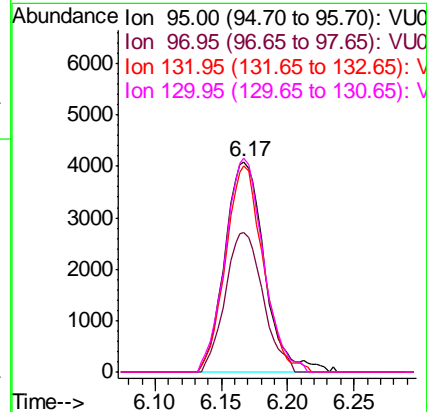
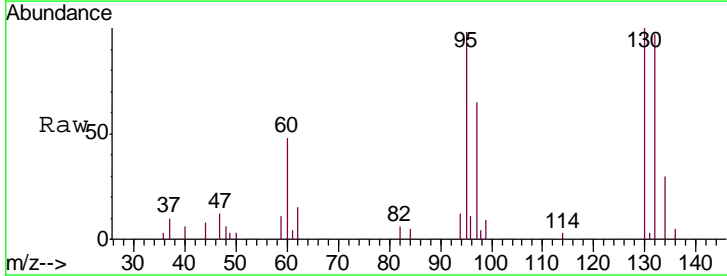
Instrument : MSVOA_U
 ClientSampled : A52R8

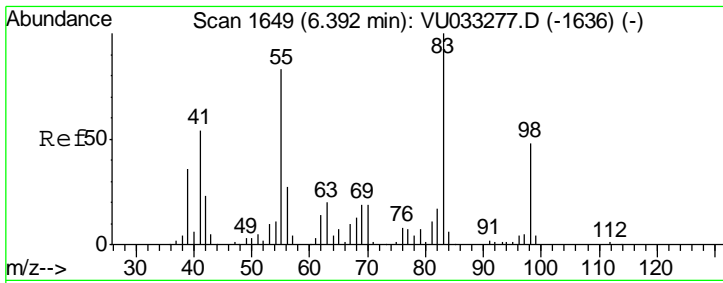
Tgt Ion	Resp	Lower	Upper
83	10624		
85	61.0	45.4	84.4



#34
 Trichloroethene
 Concen: 0.834 ug/L
 RT: 6.17 min Scan# 1579
 Delta R.T. 0.00 min
 Lab File: VU033281.D
 Acq: 17 Jul 2019 10:49

Tgt Ion	Resp	Lower	Upper
95	8482		
97	66.2	44.5	82.7
132	98.4	66.6	123.8
130	101.7	68.9	127.9

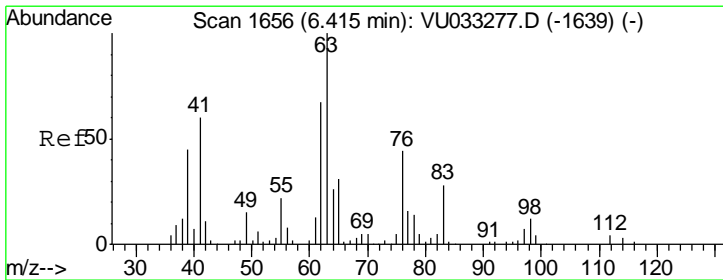
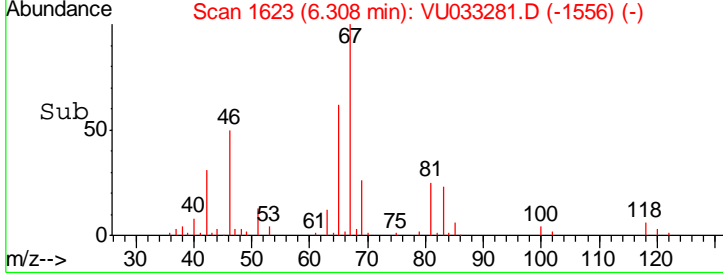
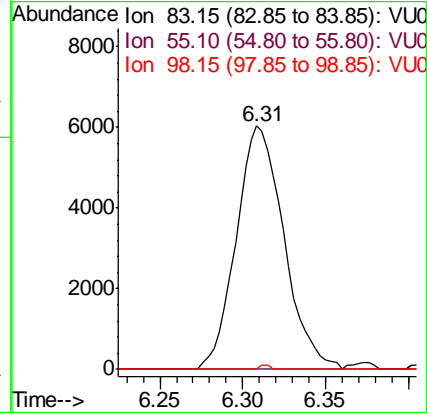
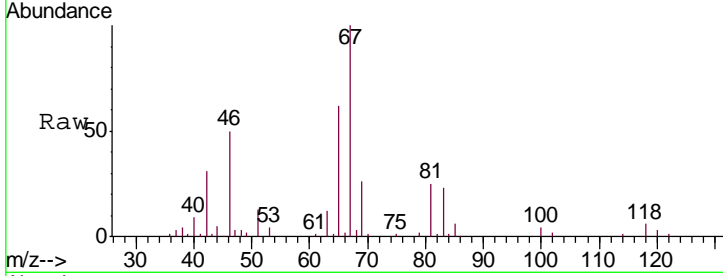




#35
 Methylcyclohexane
 Concen: 0.786 ug/L
 RT: 6.31 min Scan# 1623
 Delta R.T. -0.08 min
 Lab File: VU033281.D
 Acq: 17 Jul 2019 10:49

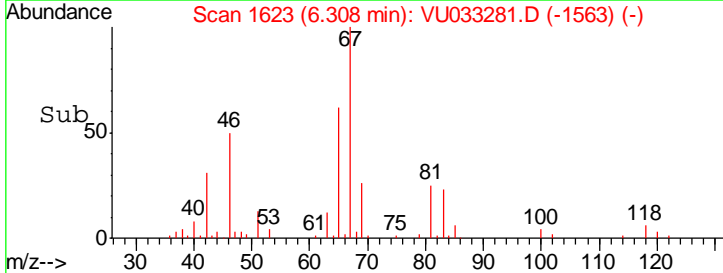
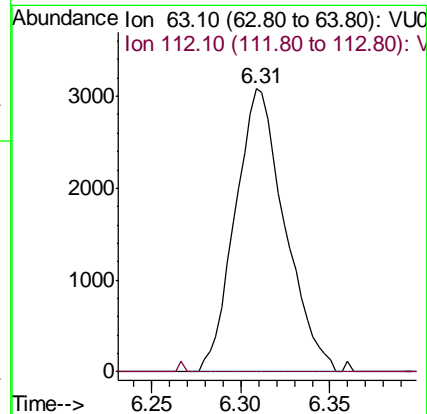
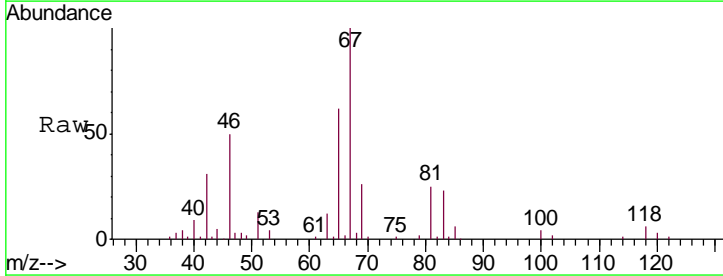
Instrument : MSVOA_U
 ClientSampled : A52R8

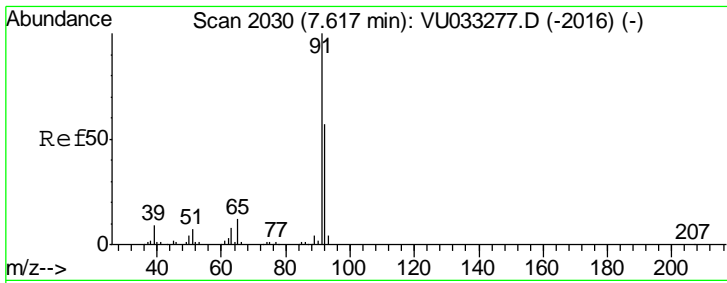
Tgt Ion	Resp	Lower	Upper
83	12045		
55	0.0	62.6	94.0#
98	0.3	36.2	54.2#



#37
 1,2-Dichloropropane
 Concen: 0.576 ug/L
 RT: 6.31 min Scan# 1623
 Delta R.T. -0.11 min
 Lab File: VU033281.D
 Acq: 17 Jul 2019 10:49

Tgt Ion	Resp	Lower	Upper
63	5985		
112	0.4	3.1	4.7#

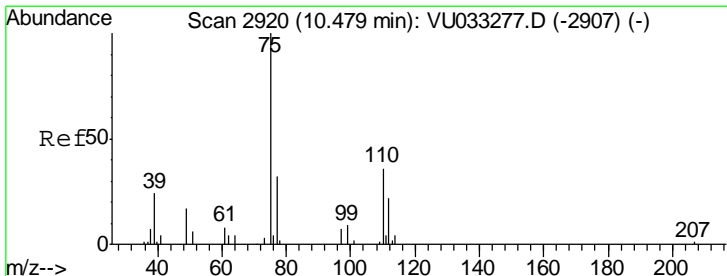
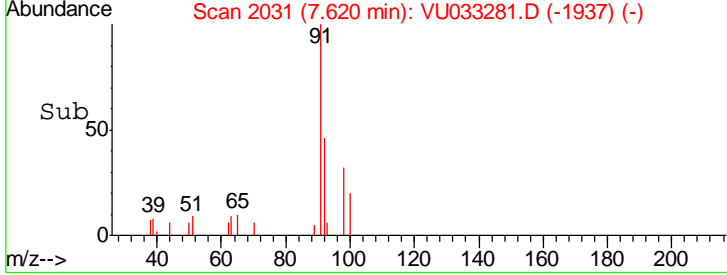
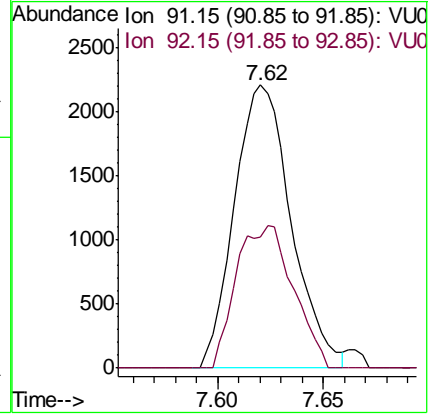
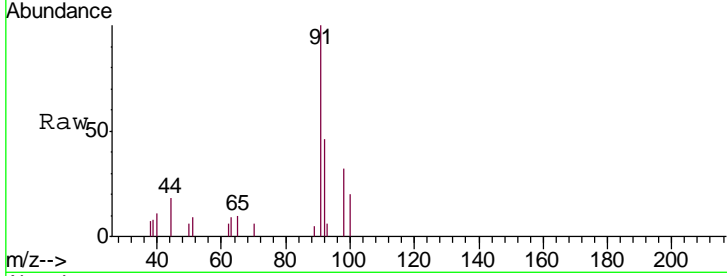




#42
 Toluene
 Concen: 0.100 ug/L
 RT: 7.62 min Scan# 2031
 Delta R.T. 0.00 min
 Lab File: VU033281.D
 Acq: 17 Jul 2019 10:49

Instrument : MSVOA_U
 ClientSampled : A52R8

Tgt Ion: 91 Resp: 4131
 Ion Ratio Lower Upper
 91 100
 92 46.1 40.0 74.2



#59
 1,2,3-Trichloropropane
 Concen: 1.036 ug/L
 RT: 11.47 min Scan# 3228
 Delta R.T. 0.99 min
 Lab File: VU033281.D
 Acq: 17 Jul 2019 10:49

Tgt Ion: 75 Resp: 7025
 Ion Ratio Lower Upper
 75 100
 77 36.7 26.5 39.7

